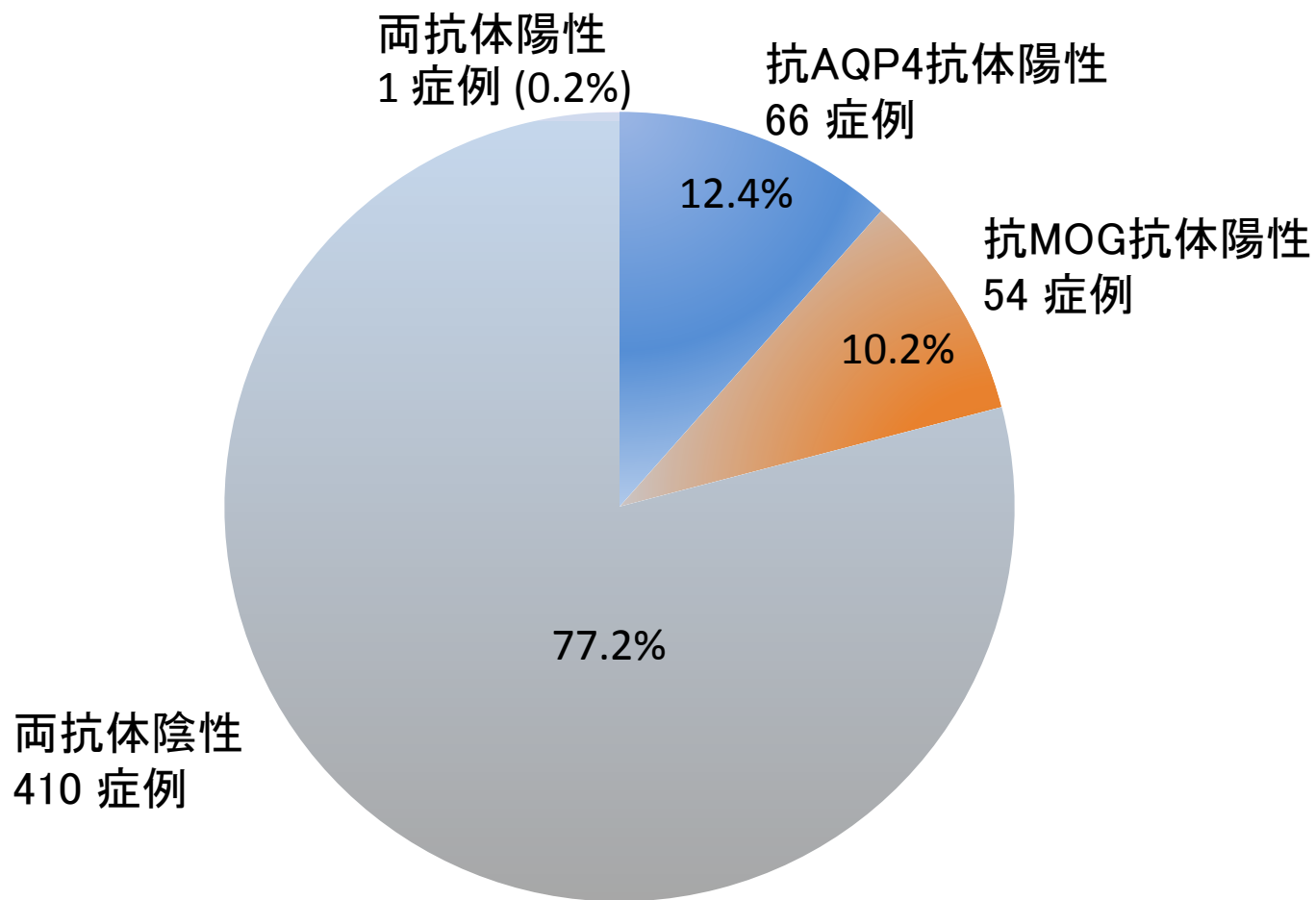
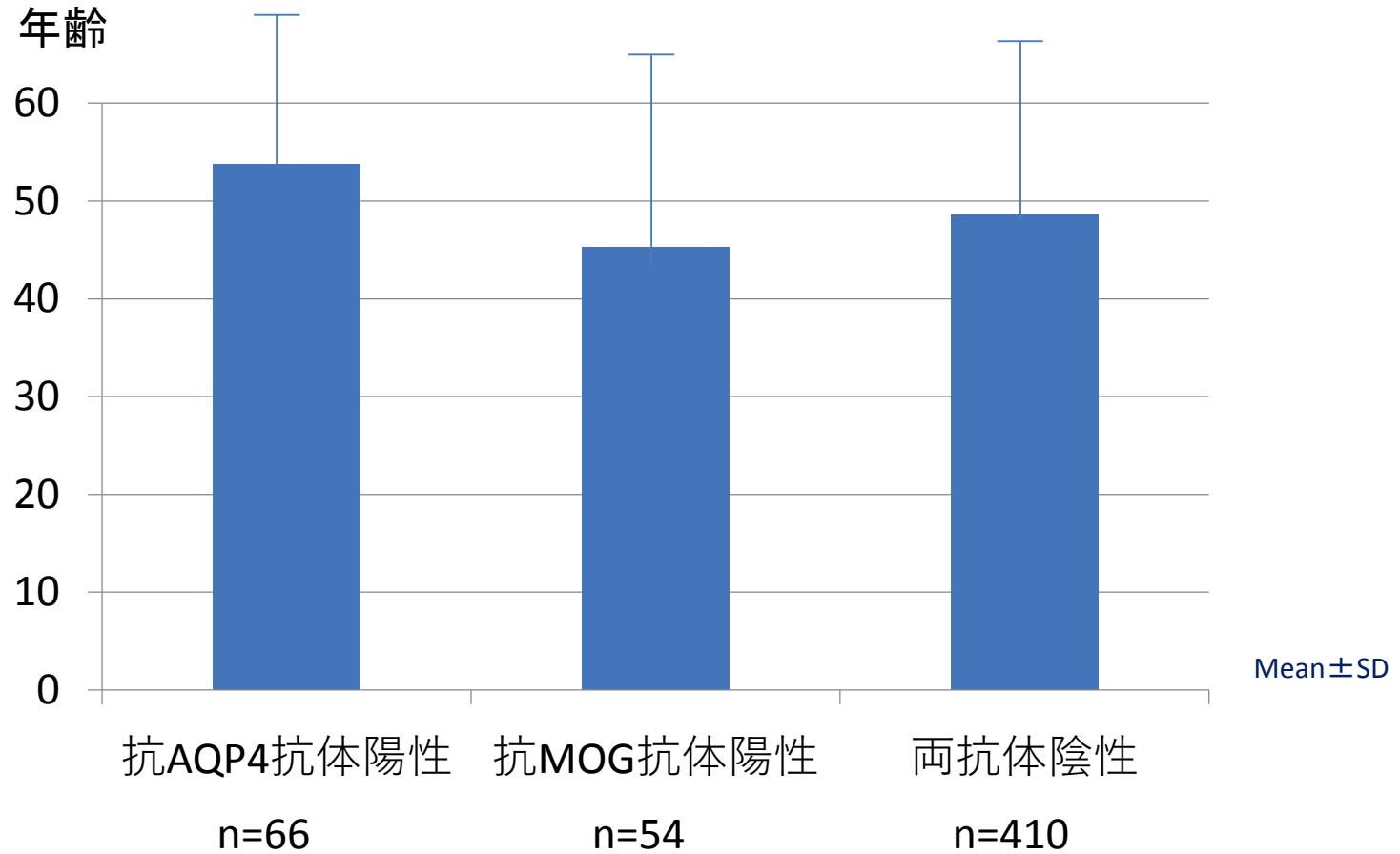


# 難治性視神経炎における 抗AQP4抗体・抗MOG抗体陽性率

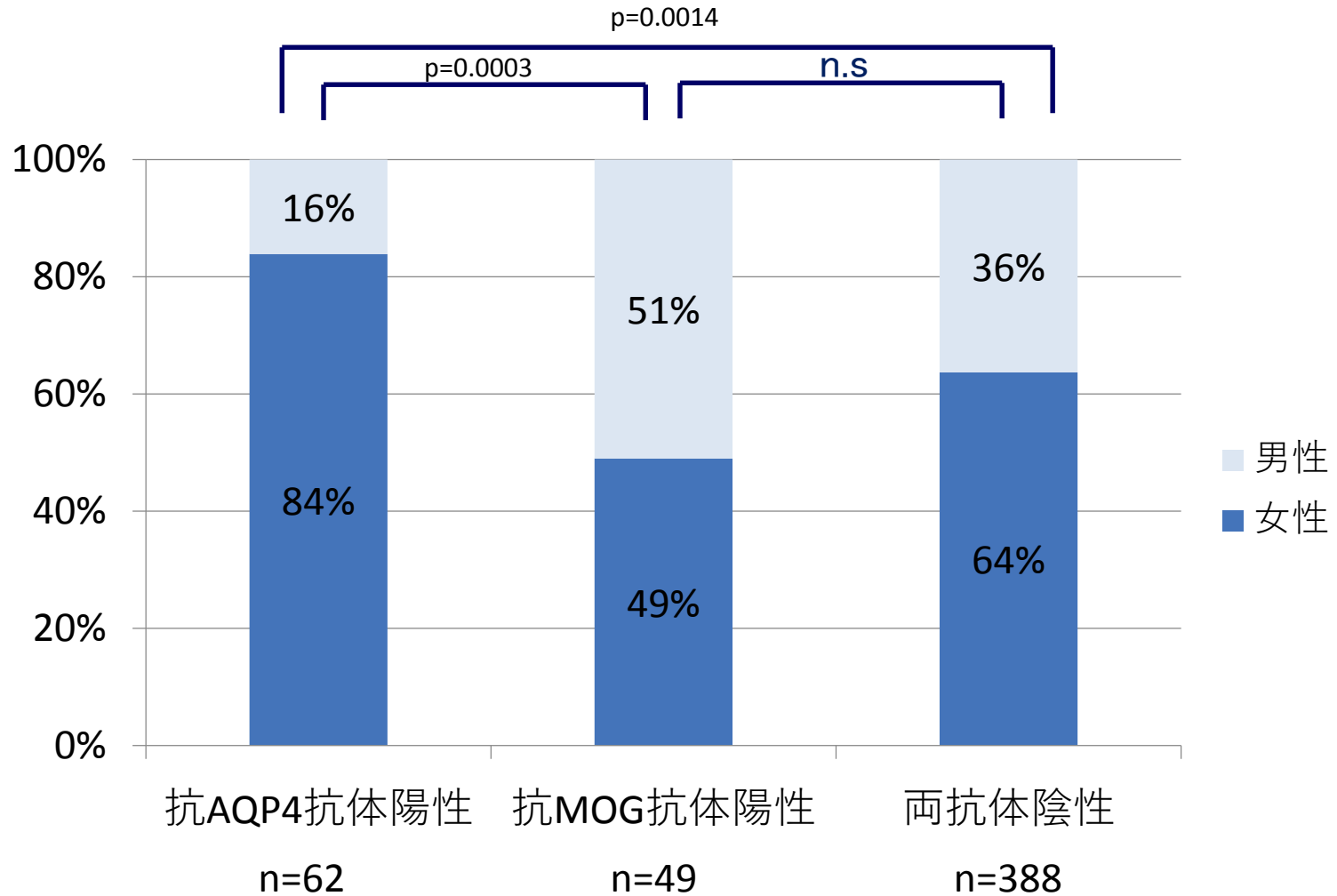


# 罹患平均年齡



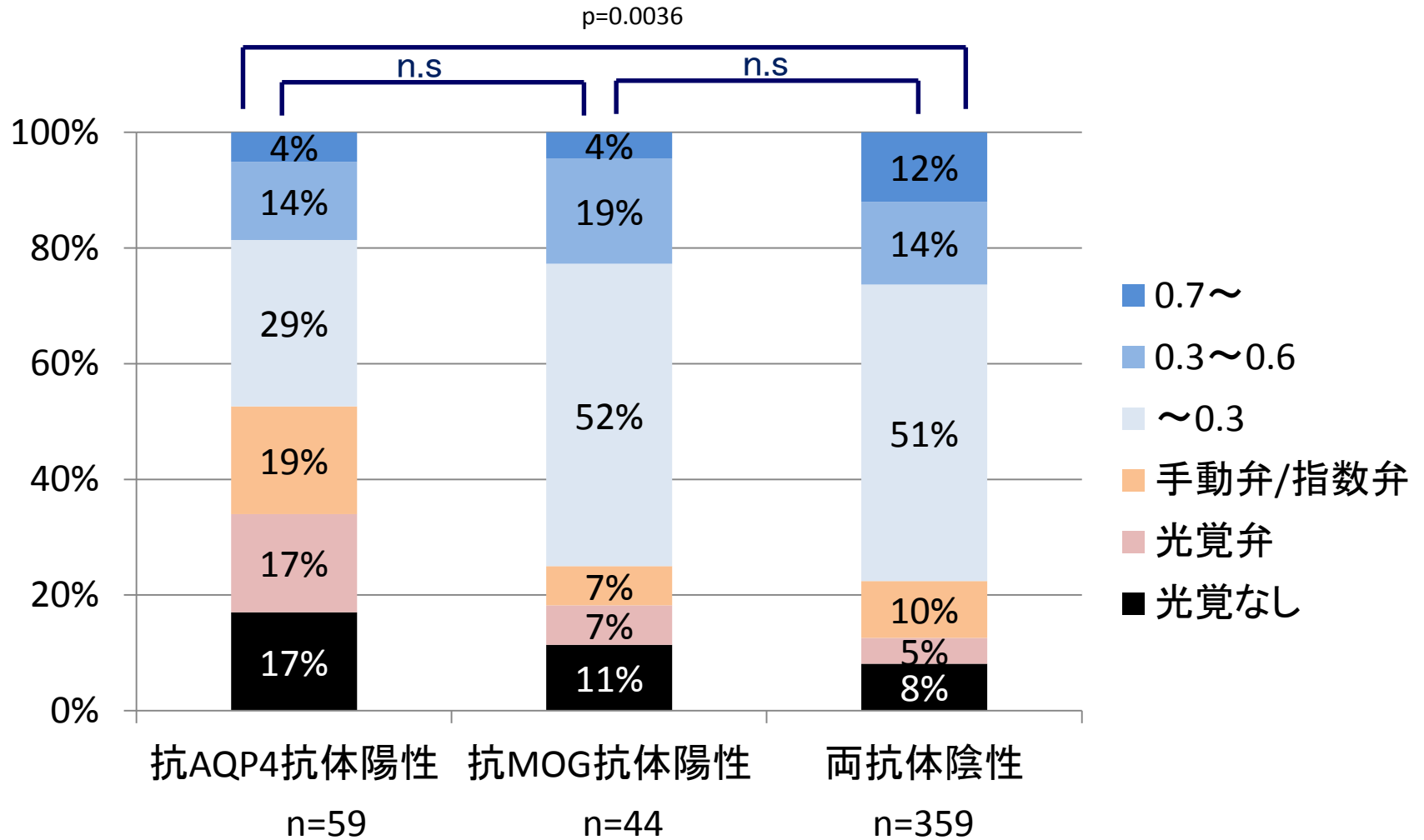
Welch's t test

# 男女比



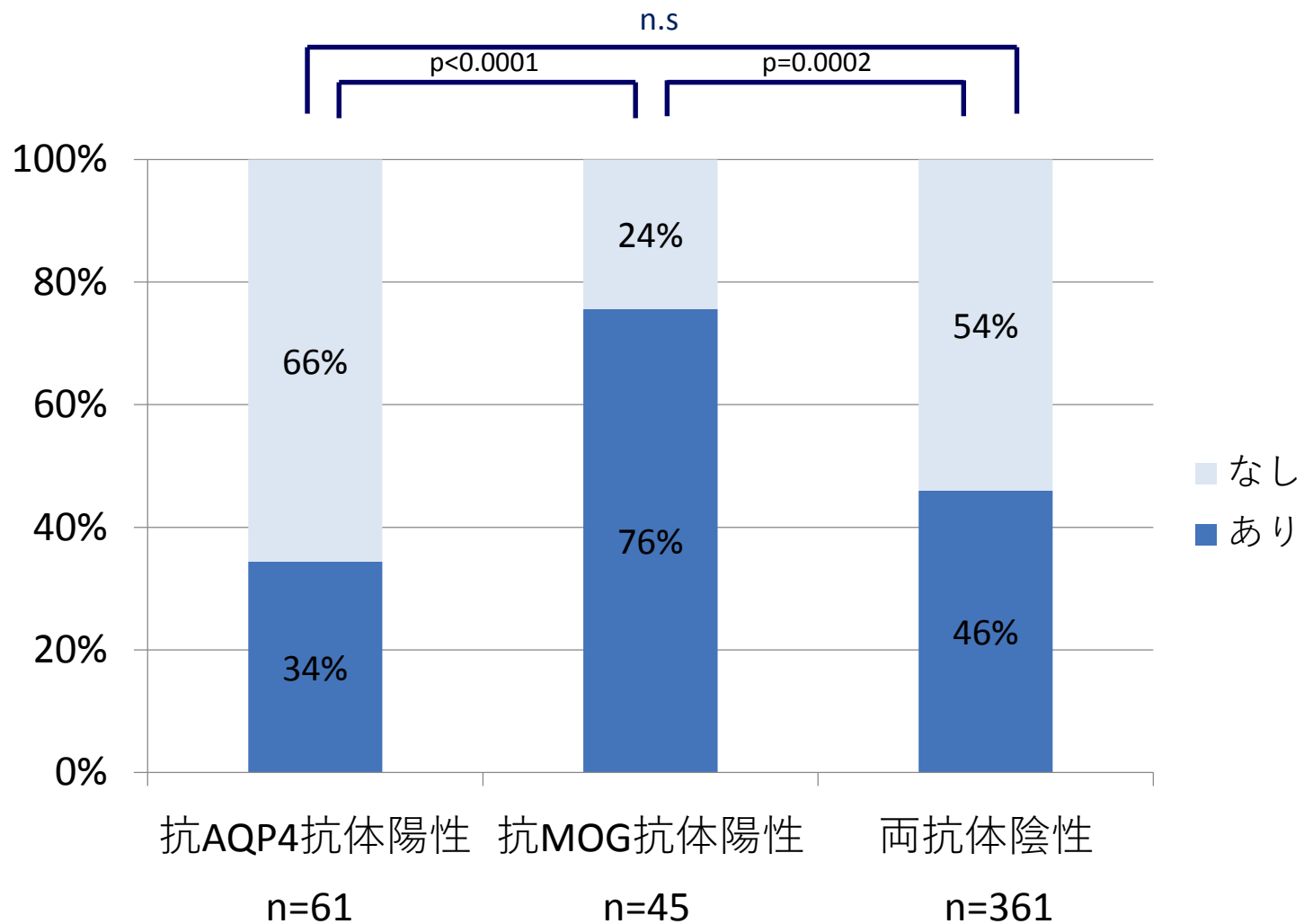
Fisher's exact test

# 治療前視力



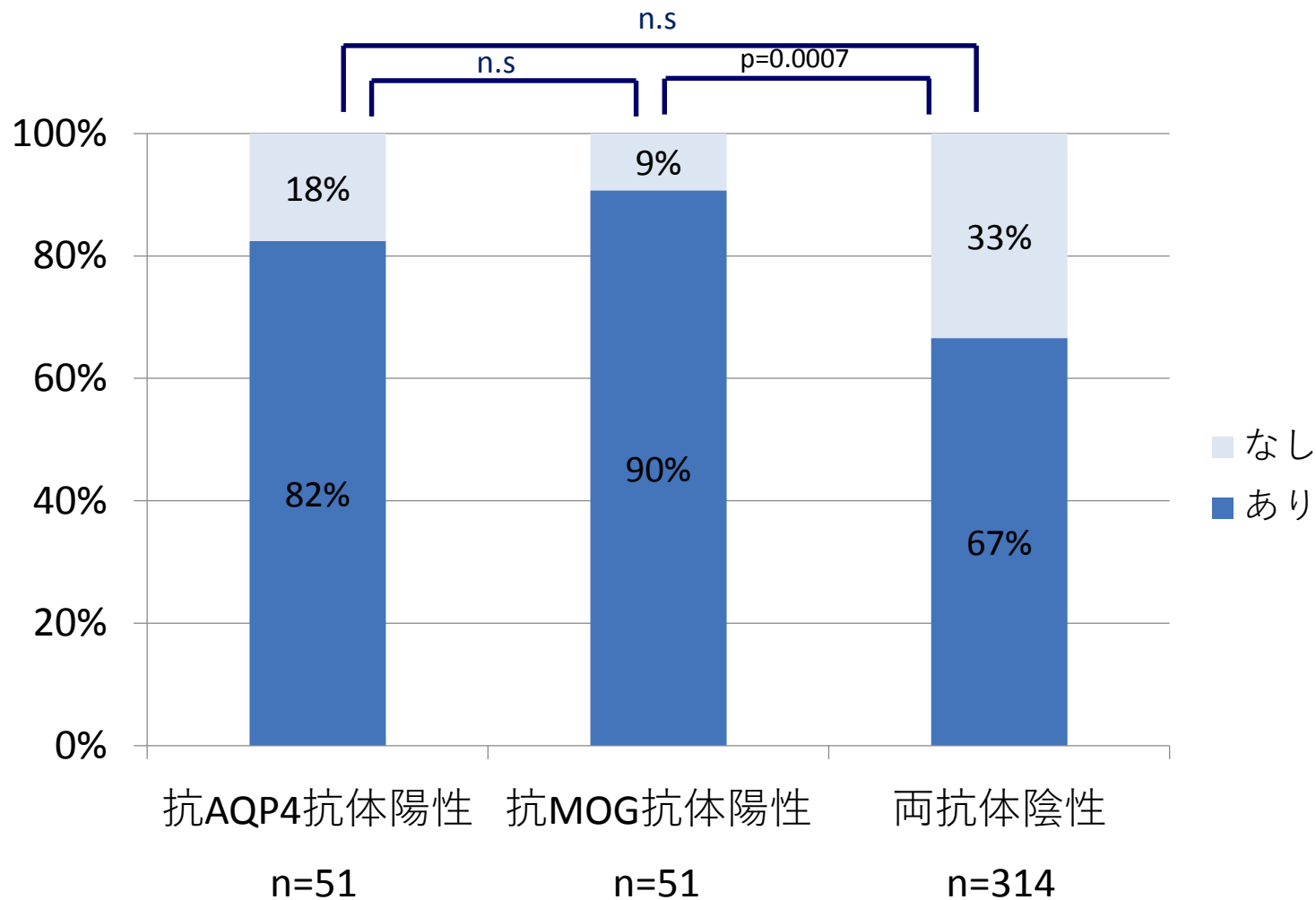
Welch's t test

# 視神経乳頭腫脹の有無



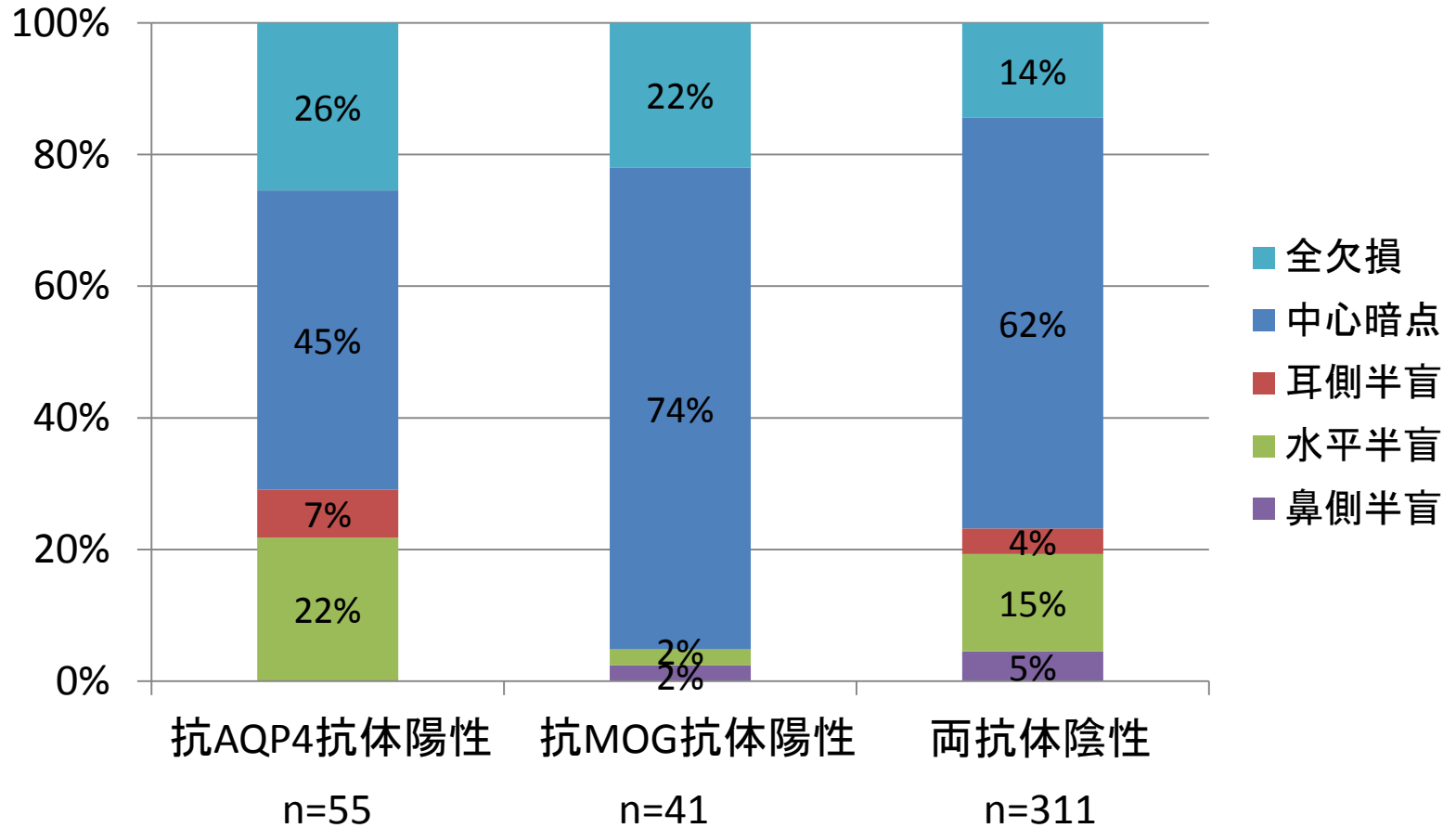
Fisher's exact test

# MRI上視神経腫脹の有無



Fisher's exact test

# 視野異常

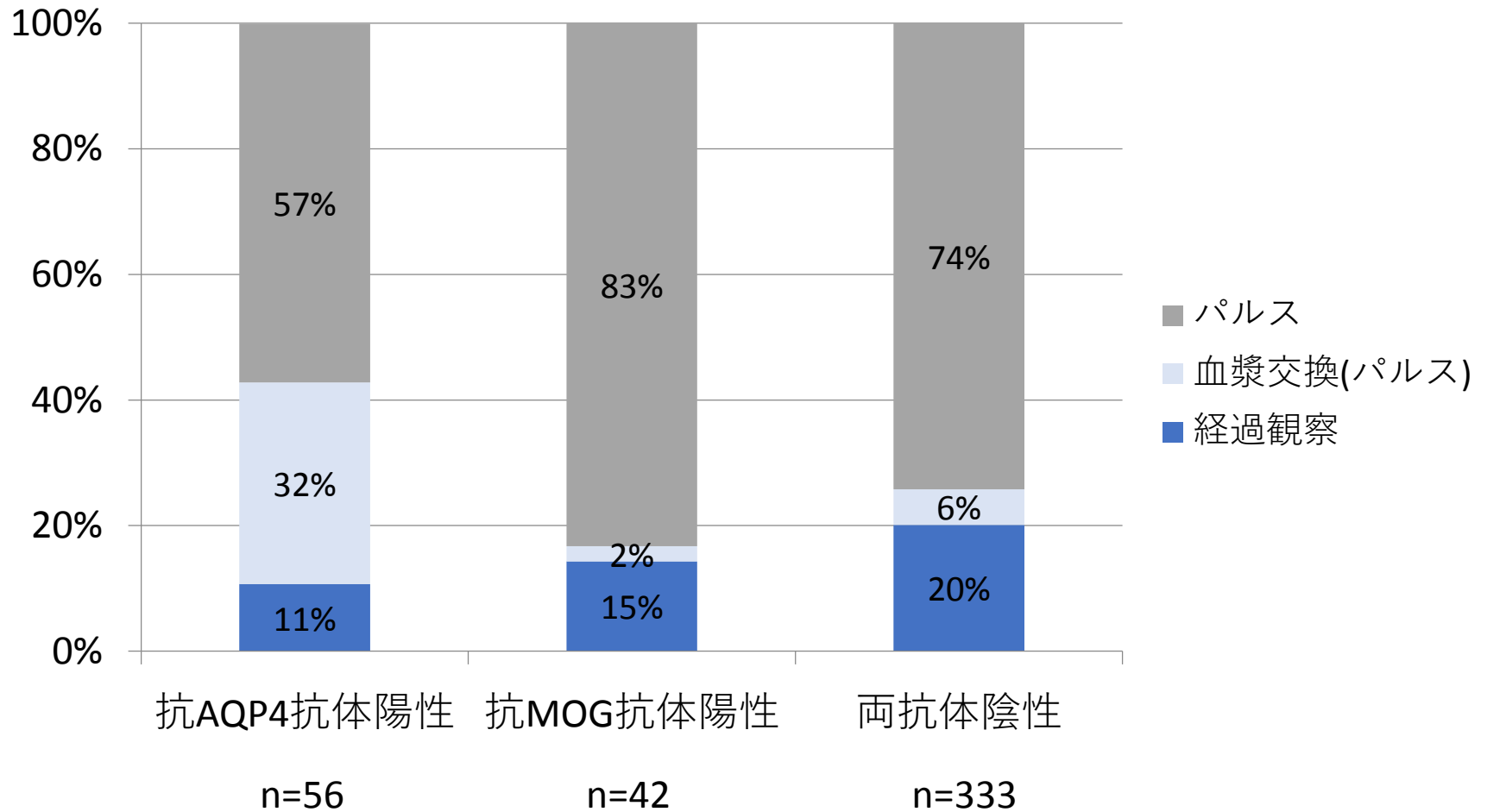


# 自己抗体の合併率

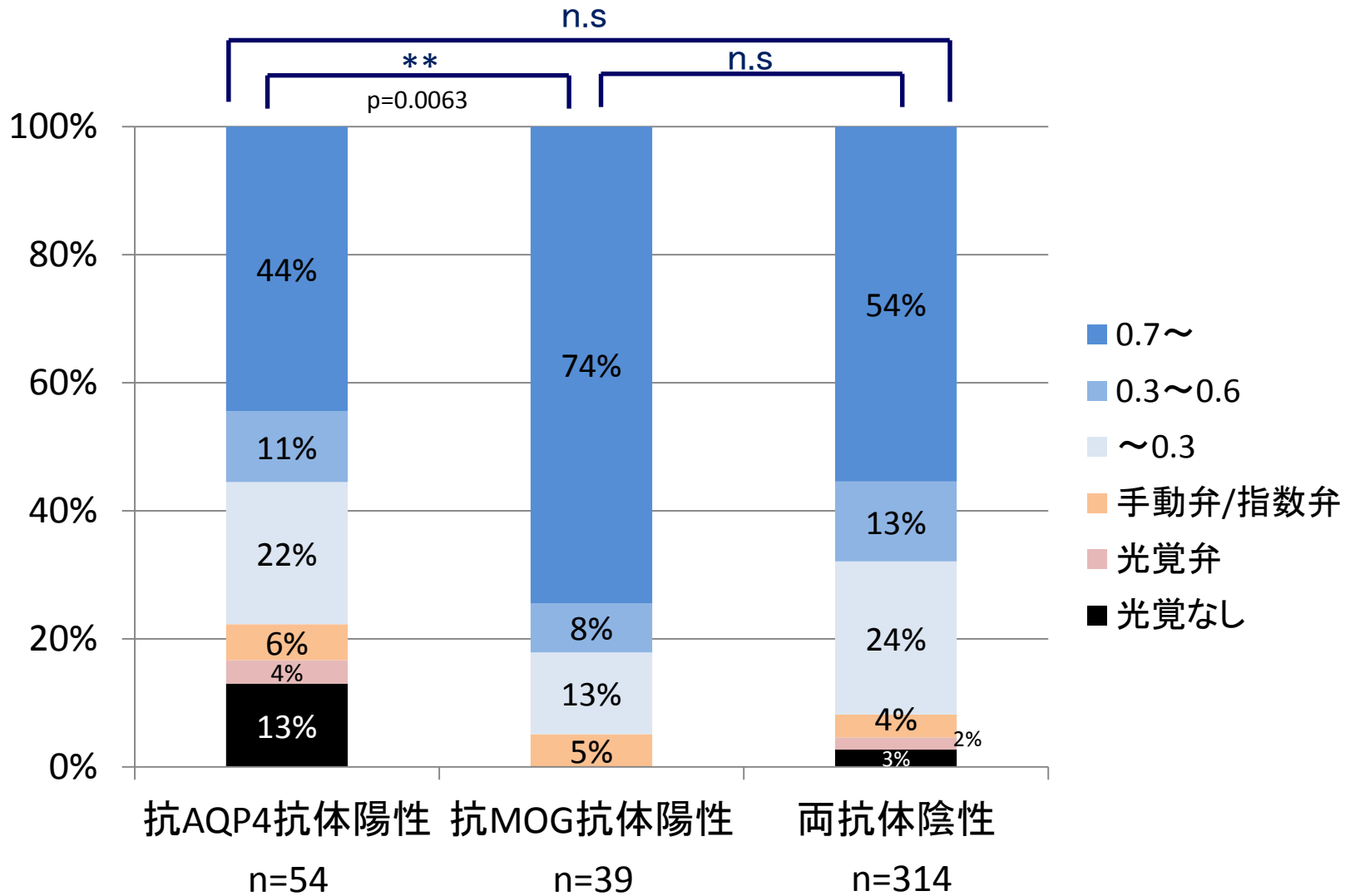
		AQP4 群 n=66(%)	MOG 群 n=54(%)	陰性群 n=410(%)
抗核抗体	(+)	16(32.7)	7(20.0)	65(23.9)
	(-)	33(67.3)	28(80.0)	207(76.1)
<b>p=0.0007</b>				
SS-A	(+)	8(17.4)	0( 0.0)	7( 2.9)
	(-)	38(82.6)	28(100)	231(97.1)
SS-B	(+)	1( 2.2)	0( 0.0)	2( 0.9)
	(-)	44(97.8)	28(100)	232(99.1)
TPO Ab	(+)	3( 8.1)	2( 8.3)	34(16.2)
	(-)	34(91.9)	22(91.7)	176(83.8)
Tg Ab	(+)	4(12.1)	2( 9.1)	32(16.0)
	(-)	29(87.9)	20(90.9)	168(84.0)
リウマチ因子	(+)	3( 7.3)	5(17.9)	16( 7.0)
	(-)	38(92.7)	23(82.1)	211(93.0)



# 治療



# 治療後視力



Welch's t test