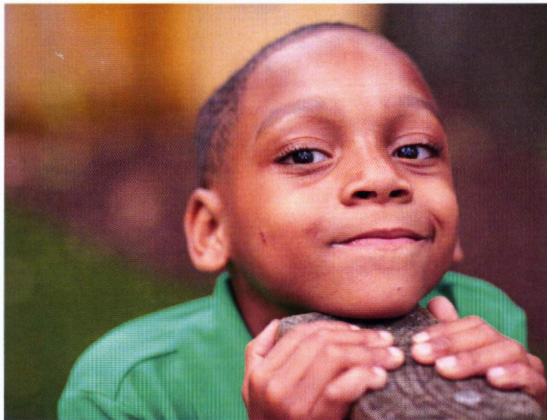
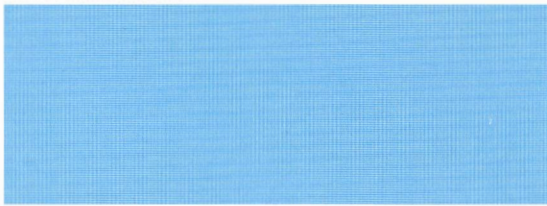
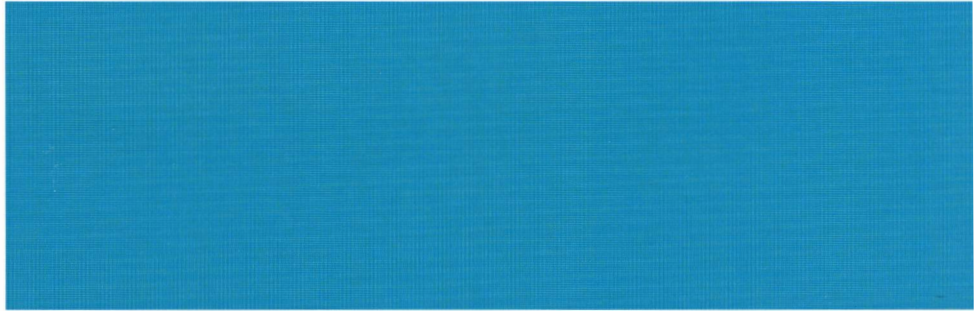
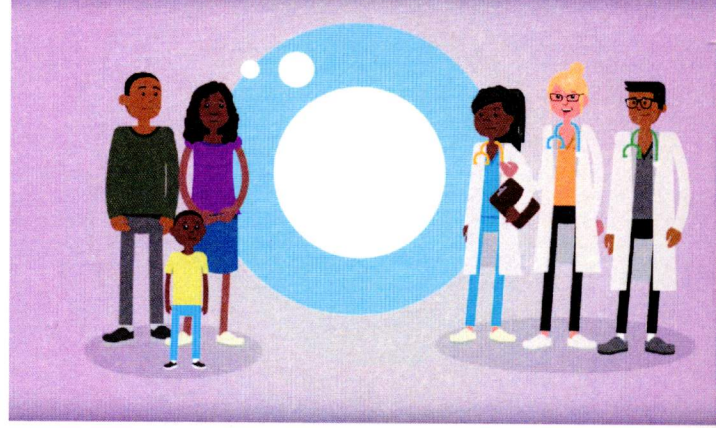


Comprehensive Fertility Care & Preservation Program

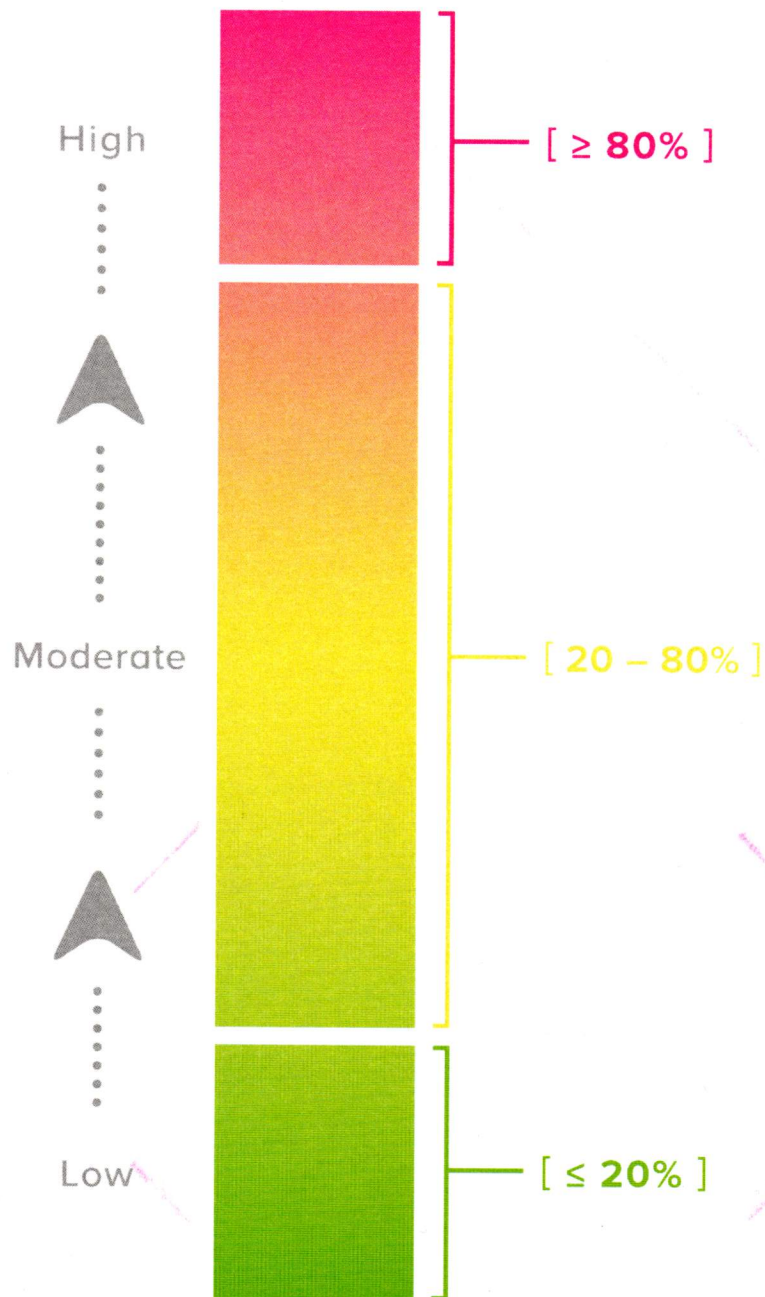


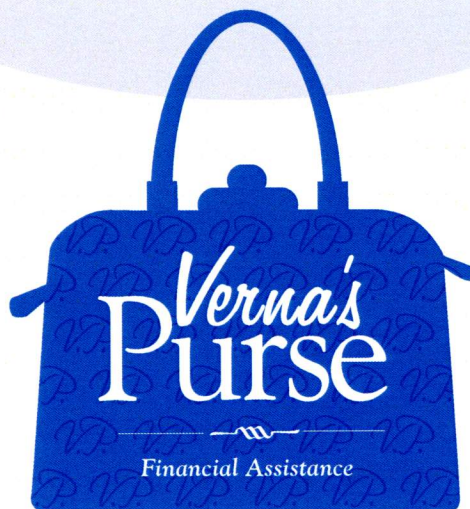
It is important for you to know that every patient has a different infertility risk. This visual shows you an estimate of your infertility risk based on your condition and treatment.



NOTES

What is my infertility risk?





Discounted long-term
storage fees available for qualifying
cancer patients, male or female.

For more information and an application visit
www.vernaspurse.org

Sperm Banking

(Sperm Cryopreservation)

Process

- Sperm sample collection
- 1–3 sperm samples (samples 24–48 hours apart)
- Sample analysis and freezing

Time Frame

1–7 days

Fertility Success Rate

- Sperm can be maintained indefinitely
- 4 to 10% live birth rate per cycle with Intrauterine Insemination (IUI)
- About 30% live birth rate per embryo with In Vitro Fertilization (IVF) or Intra Cytoplasmic Sperm Injection (ICSI)

Procedural Risk

- Unable to collect sperm sample
- Not enough healthy sperm for freezing

Financial Costs *(see Cost Information Sheet for current pricing)*

Up-front Costs

- Analysis and freezing of sperm samples
- Infection disease labs (generally covered by insurance)

Maintenance Costs

- Annual storage fees

Long-term Costs *(price will likely change over time)*

- Possible In Vitro Fertilization (IVF)
- Possible Intra Cytoplasmic Sperm Injection (ICSI)
- Possible Intrauterine Insemination (IUI)

Other Considerations

- Genetics
- Ethics
- Spiritual or religious questions
- Psychology
- Social Services
- Financial

BRV208009 0417 000500



Fertility preservation is not the decision to use the preserved tissue, but to maintain a range of fertility options for the future.

Testicular Tissue Freezing

[EXPERIMENTAL]

(Testicular tissue cryopreservation)

Process

- Small incision to the scrotum under general anesthesia
- Remove testicular tissue
- Tissue specimen is sent to Pathology
 - 75% of tissue is frozen for patient's own future use
 - 25% of tissue is given back to research

Time Frame

2–3 days

Fertility Success Rate

- Experimental protocol — no known successes in humans

Procedural Risk

- Bleeding
- Minimal pain & swelling

Financial Costs *(see Cost Information Sheet for current pricing)*

Up-front Costs

- Surgery
- Tissue processing and freezing

Maintenance Costs

- Annual storage fees

Long-term Costs *(price will likely change over time)*

- Possible testicular prosthetic later in life (optional)
- Possible In Vitro Fertilization (IVF)
- Possible Intra Cytoplasmic Sperm Injection (ICSI)
- Possible Intrauterine Insemination (IUI)

Other Considerations

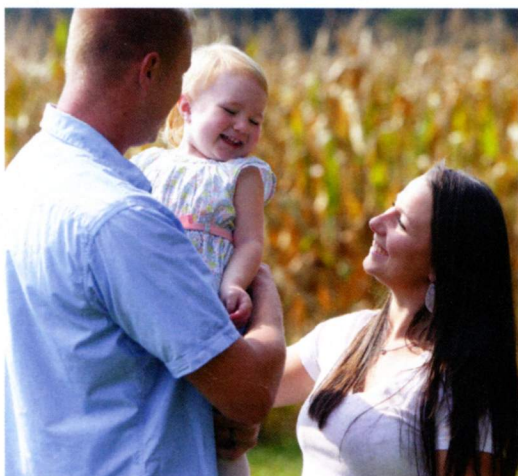
- Genetics
- Ethics
- Spiritual or religious questions
- Psychology
- Social Services
- Financial

BRV208009 0417 000500



*Fertility preservation is not the decision to use the preserved tissue,
but to maintain a range of fertility options for the future.*

Comprehensive Fertility Care and Preservation Program



As treatments for childhood cancer and blood diseases continue to improve, more survivors are living well into their reproductive years. Recognizing that future fertility can be of great importance to long-term quality of life, specialists at the Comprehensive Fertility Care and Preservation Program at Cincinnati Children's Hospital Medical Center offer a variety of options and services to patients and their families.

CONTACT US

For patient referrals, and non-urgent consultation during business hours, contact the program directly at:

Phone: 1-513-636-7781
fertilityconsult@cchmc.org

International
Phone: +1-513-636-3100
international@cchmc.org

www.cincinnatichildrens.org

INNOVATIVE FERTILITY PRESERVATION OPTIONS

Our team includes pediatric specialists from oncology, gynecology and urology. We help patients and families understand how their medical condition or treatment regimens place them at risk for fertility complications in the future as well as discuss options for fertility preservation, preferably prior to starting treatment.

Our team works closely with the University of Cincinnati Center for Reproductive Health to provide the most current, innovative procedures available. We coordinate the process in a timely manner to minimize delay in treatment.

For Males

For males who have reached puberty, we offer:

- Sperm Banking, the gold standard for fertility preservation

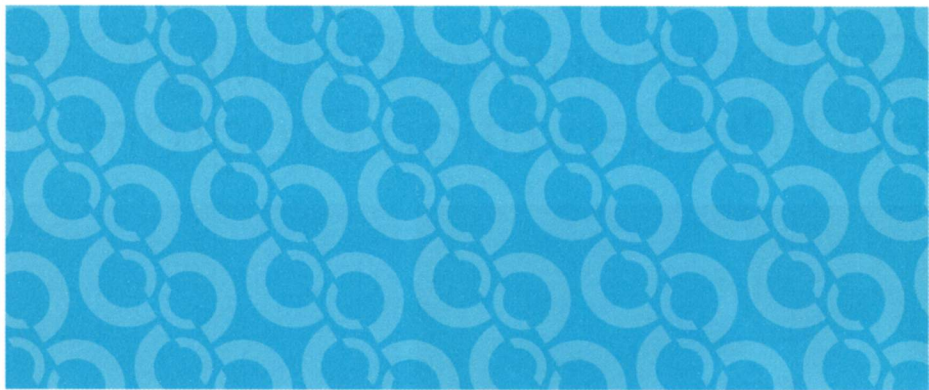
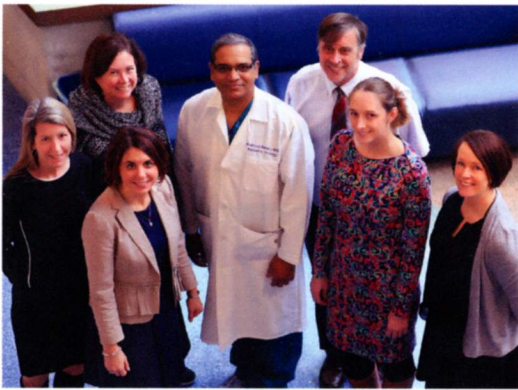
For Females

For females who have reached puberty, we offer:

- Oocyte (egg) Cryopreservation
- Embryo Cryopreservation
- Ovarian Transposition, a procedure in which an ovary or both ovaries are transferred out of the field of radiation



Cincinnati Children's is ranked third among all Honor Roll hospitals in the 2017-18 *U.S. News & World Report* listing of Best Children's Hospitals.



MEET OUR TEAM

Olivia Frias MSN, RN III, CNL
Patient Fertility Navigator

Oncology

Karen Burns, MD, MS
*Co-Director, Comprehensive Fertility
Care and Preservation Program*

Kasiani Myers, MD
Christine Phillips, MD

Gynecology

Lesley Breech, MD
*Co-Director, Comprehensive Fertility
Care and Preservation Program*

Rula V. Kanj, MD

Urology

Andrew Strine, MD
*Co-Director, Comprehensive Fertility
Care and Preservation Program*

Pramod Reddy, MD

Eugene Minevich, MD, FACS, FAAP

Brian VanderBrink, MD

Abbey Franklin, MSPAS, PA-C

EXPERIMENTAL TREATMENT PROTOCOLS

Pre-pubertal patients pose a challenge for fertility preservation. However, we offer experimental treatment protocols, including:

- **Testicular Tissue Cryopreservation**, which involves making a small incision to the testicle under general anesthesia, followed by removing a portion or one entire testicle. The tissue is then cryopreserved in anticipation of novel technology that will allow for reimplantation.
- **Ovarian Tissue Cryopreservation**, which involves surgically removing a single ovary or a portion of the ovary. This tissue (including any immature or mature eggs inside) is cryogenically preserved for future use. Fertility interventions to utilize the ovarian tissue in the future may include ovarian tissue re-implantation or in-vitro maturation of immature eggs. Patients may also require assisted reproduction techniques, such as in-vitro fertilization.

EXTENSIVE CONSULTATION AND EDUCATION FOR FAMILIES

Our team collaborates with pediatric oncologists at Cincinnati Children's to identify newly diagnosed or relapsed patients whose cancer or proposed therapy places them at risk for fertility complications. We meet with families to discuss the risks, strengths, limitations and science behind their fertility preservation options.

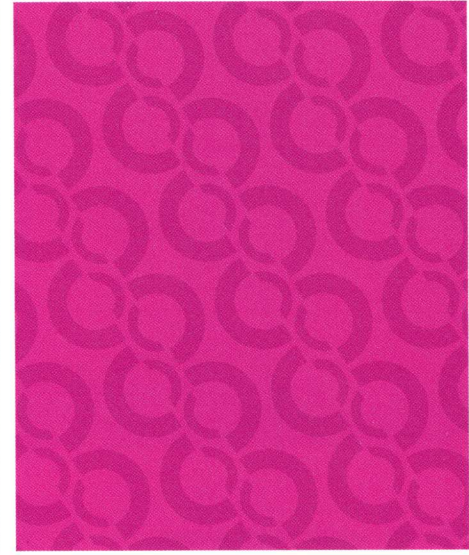
Following therapy, we offer consultation to patients and families to evaluate the treatment effect on fertility. We follow up with those who elected fertility preservation and meet with patients and families who did not undergo preservation prior to starting treatment.

For urgent issues, or to speak with the specialist on call 24/7, call the Physician Priority Link at 1-888-987-7997.

Fertility Preservation Choice Cards

A guide to using the cards with your patients.

1. Before the fertility consultation, determine the infertility risk for the patient.
2. Sit in close proximity with the patient and/or parent.
3. Show the patient and/or parent the topics on each card.
4. Indicate the patient's infertility risk on the infertility risk meter with a pen.
5. Hand the infertility risk meter and appropriate preservation option cards to the patient and/or parent.
6. Allow the patient and/or parent to read the cards.
7. Explain the information contained on the cards.
8. Allow the patient and/or parent to review all of the cards and help select topics that are important to the patient and/or parent.
9. Allow the family to keep the cards for reference.
10. Provide contact information for questions and note that you will follow-up with them regarding their choice in a timely way, dependent on onset of therapy and available options.



The Comprehensive Fertility Care & Preservation Program

at Cincinnati Children's

The goal of our Comprehensive Fertility Care & Preservation Program is to meet with patients whose medical condition or treatment plans place them at risk for fertility complications in the future. By educating patients and families about the risks early on in their diagnosis and treatments, they can learn if fertility preservation options are available or right for them.

We have teamed with the University of Cincinnati Center for Reproductive Health to provide all available fertility preservation options, utilizing the best and most up-to-date processes and techniques. We coordinate the process in a timely manner to minimize delay in treatment.

FERTILITY SERVICES & TREATMENT

Recognizing that future fertility can be of great importance to long-term quality of life, our team offers a variety of options and services.

The best treatment option may differ depending on many factors including age, pubertal status, underlying diagnosis, time frame available prior to beginning treatment, and the specific treatment(s) the patient is scheduled to undergo. Patients and families should discuss their particular situation with their doctor to determine the best option and discuss the full range of risks and benefits.



Fertility Preservation Financial Cost- SCP

(Cincinnati Locations)

● Sperm Banking

Locations	Semen Analysis (SA) + Cryopreservation	Additional or repeat collections	Office consultation	Storage fees
University of Cincinnati *These prices have been reduced by 60% for ONC/BMT pts	\$288	\$288		\$75 yearly CryoPoint storage <ul style="list-style-type: none"> • Must fill out Live Strong Application for discounted price • https://livestrongfertilityportal.unicentric.com \$108.00 on site at University of Cincinnati
Bethesda Reproductive Studies Laboratory (BNorth)	\$225	\$125		\$180.00 yearly <ul style="list-style-type: none"> • https://livestrongfertilityportal.unicentric.com • 25% reduction with Live Strong = \$135
Institute for Reproductive Health (Hyde Park)	\$225	\$225		\$275.00 ReproTech pricing Verna's Purse Financial Aid \$75 storage \$95 shipping <ul style="list-style-type: none"> • tax forms must be sent for verification of annual household income

Fertility Preservation Financial Cost- Male

● Testicular Tissue Cryopreservation

Note: All figures are cost estimates and subject to change

1) Procedure Fees (Biopsy): ~\$ 5,700

Hospital Fee	\$4,000
Anesthesia	\$700
Surgeon	\$800
Labs	\$200
Future Costs	Unknown

Procedure Fees (Orchiectomy): ~\$ 10,000

Hospital Fee	\$8,000
Anesthesia	\$800
Surgeon	\$1,000
Labs	\$200
Future Costs	Unknown

2) Annual Fees

ReproTech

	Transfer	Storage / yearly
Cancer Patients	\$215	\$275
Cancer Patients Financial Aid Verna's Purse <small><75,000 Single <100,00 Married Based on 1040 Tax</small>	\$ 95	\$75
Non-Cancer Patients	\$ 215	\$275
Non- Cancer Patients Financial Assistance Verna's Purse <small><75,000 Single <100,00 Married Based on 1040 Tax</small>	\$215	\$175 (\$50 quarterly storage)