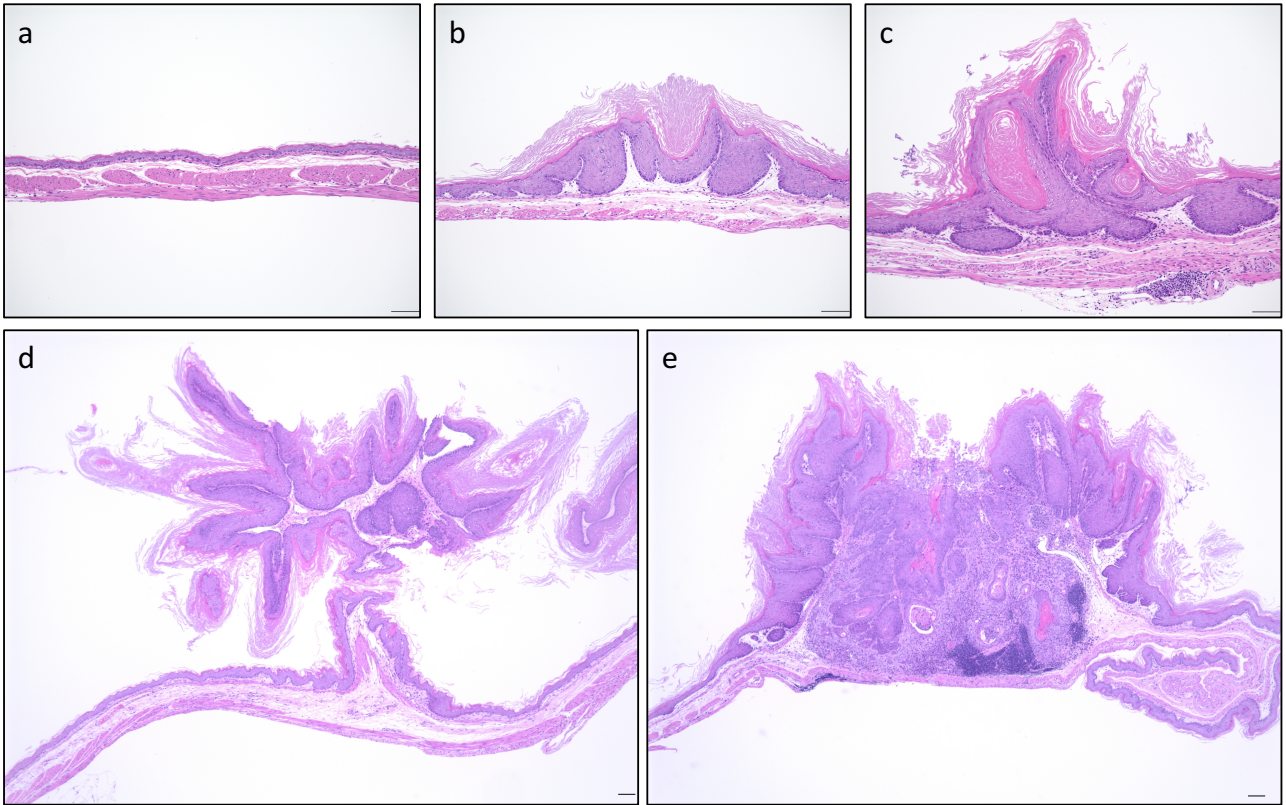
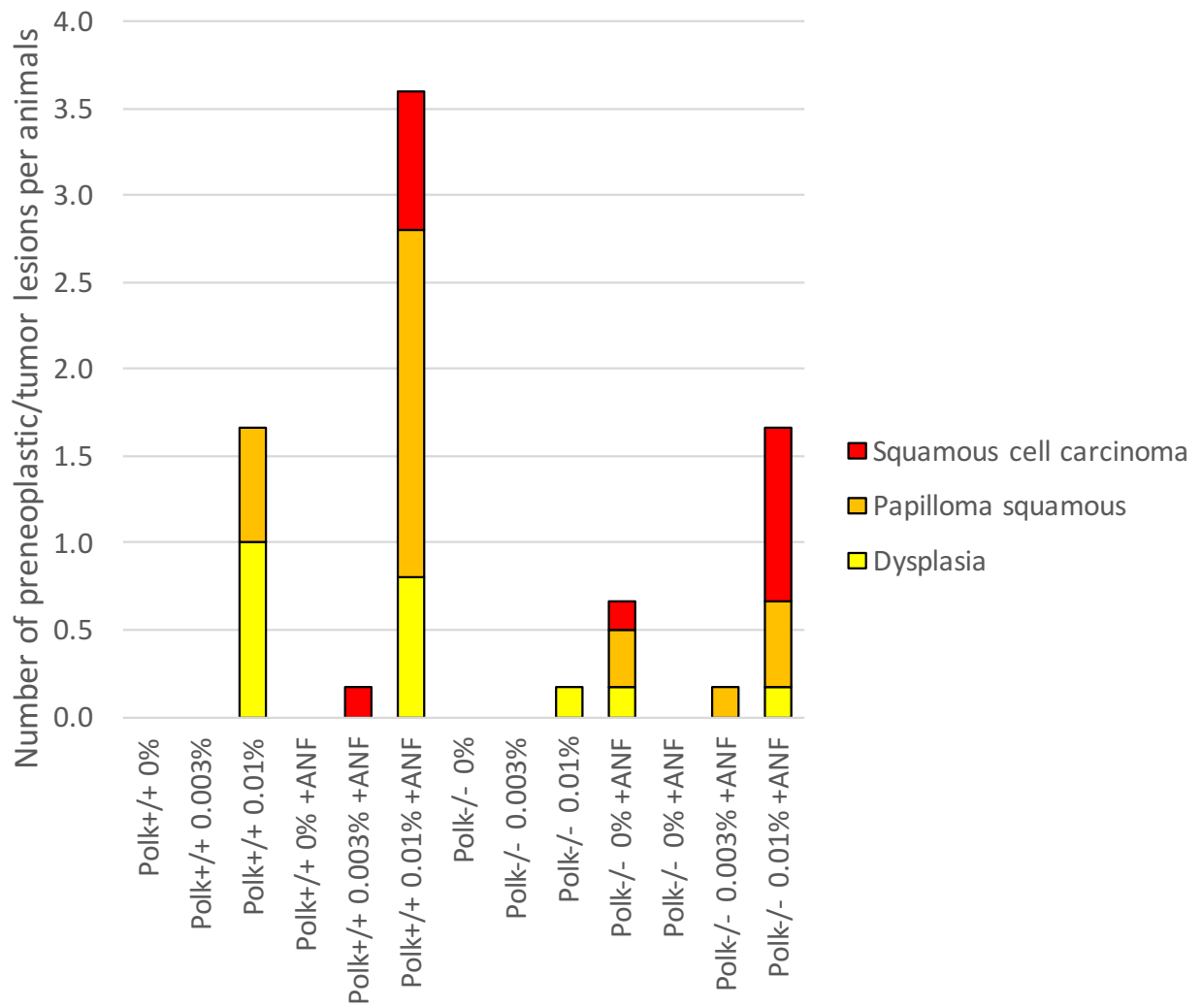


**Fig. 4.** Body weight gain of (a) *Polk*<sup>+/+</sup> and (b) *Polk*<sup>-/-</sup> mice treated with benzo[*a*]pyrene and  $\alpha$ -naphthoflavone for 40 weeks. \**P* < 0.05 compared with 0% benzo[*a*]pyrene.



**Fig. 5.** Representative images of histopathological findings in the forestomach of the mice treated with benzo[*a*]pyrene and  $\alpha$ -naphthoflavone for 40 weeks. (a) normal forestomach, (b) hyperplasia squamous, (c) dysplasia, (d) papilloma squamous, (e) squamous cell carcinoma. Bar=100  $\mu$ m.



**Fig. 6.** Multiplicity of tumor lesions in the forestomach of *Polk*<sup>+/+</sup> and *Polk*<sup>-/-</sup> mice treated with benzo[*a*]pyrene and  $\alpha$ -naphthoflavone for 40 weeks.