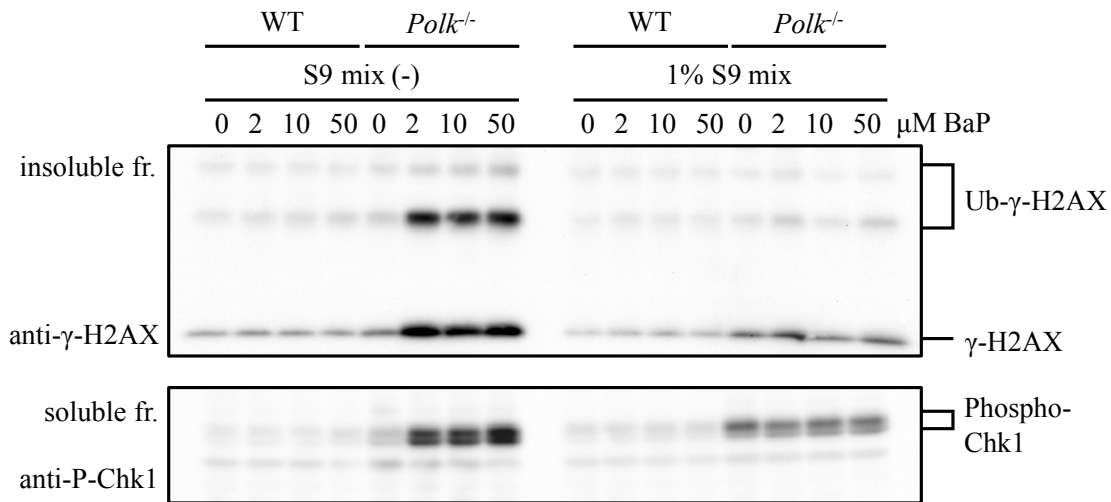
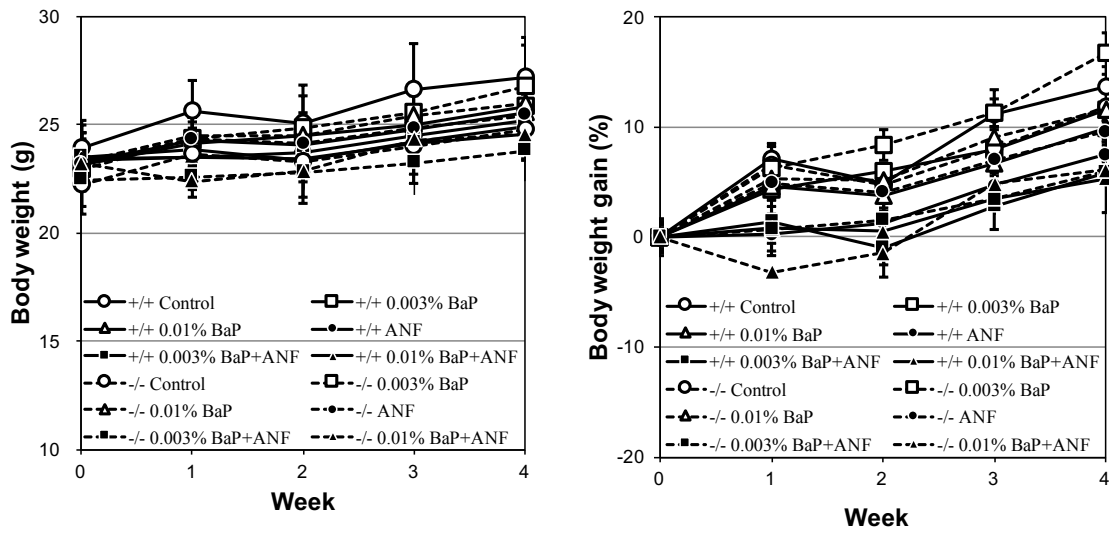


**Fig. 1.** Cellular sensitivities of TLS-deficient cells to metabolically unactivated or activated benzo[*a*]pyrene.



**Fig. 2.** Activation of DNA-damage responses in *Polk*<sup>+/+</sup> and *Polk*<sup>-/-</sup> cells treated with metabolically unactivated or activated benzo[*a*]pyrene



**Fig. 3.** Body weight and body weight gain of *Polk*<sup>+/+</sup> and *Polk*<sup>-/-</sup> mice treated with with benzo[*a*]pyrene and  $\alpha$ -naphthoflavone for 4 weeks