

表1 用いた自然交雑種の一覧

Natural hybrid No.	産地	形態学的特徴から推定された種
1	長崎県	Torafugu, unknown
2	不明	Torafugu, Shimafugu
3	三重県	Torafugu, Higanfugu or Akamefugu
4		
5		
6		
7	神奈川県	Torafugu, unknown
8		
9		
10		
11		
12	静岡県	Mafugu, unknown
13	新潟県	Gomafugu, unknown
14	不明	Shosai fugu, unknown
15	宮城県	Shosai fugu, Gomafugu
16	神奈川県	Torafugu, Mafugu or Shosai fugu
17	千葉県	Torafugu, Mafugu or Shosai fugu
18	愛知県	Mushifugu, unknown
19	神奈川県	Shosai fugu, unknown
20		

表2 母系種の判別に用いたプライマー

プライマー	配列
16Sar-L	5' -CGCCTGTTTATCAAAAACAT-3'
16Sbr-H	5' -CCGGTCTGAACTCAGATCACGT-3'
L14317Glu	5' -CAGGATTTTAACCAGGACTAATGGCTTGAA-3'
H15149	5' -CCCTCAGAATGATATTTGTCCTCA-3'

表3 自然交雑種の母系種判別結果

Sample	16S rRNA		cyt <i>b</i>		
	Species	Identify (bp)	Species	Identify (bp)	
Natural	1	Torafugu	396/396	Torafugu , Karasu	385/385
hybrid	2	Mafugu , Mefugu	500/501	Mafugu	419/419
	3	Torafugu	482/482	Torafugu , Karasu	329/329
	4	Torafugu	485/485	Torafugu , Karasu	390/390
	5	Torafugu	479/479	Torafugu , Karasu	342/342
	6	Torafugu	453/453	Torafugu , Karasu	416/416
	7	Torafugu	466/466	Torafugu , Karasu	390/391
	8	Torafugu	471/471	Torafugu , Karasu	407/408
	9	Torafugu	459/459	Torafugu , Karasu	416/416
	10	Torafugu	456/456	Torafugu , Karasu	403/403
	11	Torafugu	522/523	Torafugu , Karasu	412/412
	12	Mafugu , Mefugu	516/517	Mafugu	377/378
	13	Gomafugu	522/522	Gomafugu	371/371
	14	Gomafugu	410/410	Gomafugu	363/363
	15	Shosai fugu	513/513	Shosai fugu	388/388
	16	Torafugu	526/526	Torafugu , Karasu	404/404
	17	Mafugu , Mefugu	527/528	Mafugu	392/393
	18	Torafugu	531/531	Torafugu , Karasu	404/404
	19	Mafugu , Mefugu	528/528	Mafugu	406/406
	20	Mafugu , Mefugu	522/522	Mafugu	397/399

表 4 単一系統と推定された個体の母系種判別結果

Sample	16S rRNA		cyt <i>b</i>		
	Species	Identify (bp)	Species	Identify (bp)	
Non- hybrid	7	Shimafugu	391/391	Shimafugu	373/373
	8	Shimafugu	406/406	Shimafugu	377/377
	9	Shimafugu	436/436	Shimafugu	373/373
	10	Shimafugu	402/402	Shimafugu	354/354
	11	Shimafugu	388/388	Shimafugu	310/310
	12	Shimafugu	393/393	Shimafugu	380/380
	25	Shimafugu	374/374	Shimafugu	342/343
	26	Shimafugu	477/477	Shimafugu	383/383
	27	Shimafugu	434/435	Shimafugu	372/372
	28	Shimafugu	484/484	Shimafugu	370/370
	34	Mafugu, Mefugu	523/524	Mafugu	362/362
	35	Mafugu, Mefugu	415/415	Mafugu	374/374
	36	Mafugu, Mefugu	362/362	Mafugu	343/343
	37	Mafugu, Mefugu	403/404	Mafugu	343/343
	38	Mafugu, Mefugu	479/479	Mafugu	372/373
	39	Mafugu, Mefugu	339/339	Mafugu	366/366
	40	Mafugu, Mefugu	383/384	Mafugu	346/346
	41	Mafugu, Mefugu	431/432	Mafugu	366/366
	42	Mafugu, Mefugu	447/448	Mafugu	351/351
	52	Mafugu, Mefugu	429/430	Mafugu	365/365
	53	Mafugu, Mefugu	386/386	Mafugu	372/375
	54	Mafugu, Mefugu	414/414	Mafugu	351/353
	55	Mafugu, Mefugu	504/504	Mafugu	362/365
	56	Mafugu, Mefugu	331/332	Mafugu	382/383
	57	Mafugu, Mefugu	424/424	Mafugu	316/319
	58	Mafugu, Mefugu	316/317	Mafugu	392/392
	59	Mafugu, Mefugu	441/441	Mafugu	368/369
	60	Mafugu, Mefugu	478/478	Mafugu	378/379
	61	Mafugu, Mefugu	372/374	Mafugu	366/366
	62	Mafugu, Mefugu	421/421	Mafugu	395/395

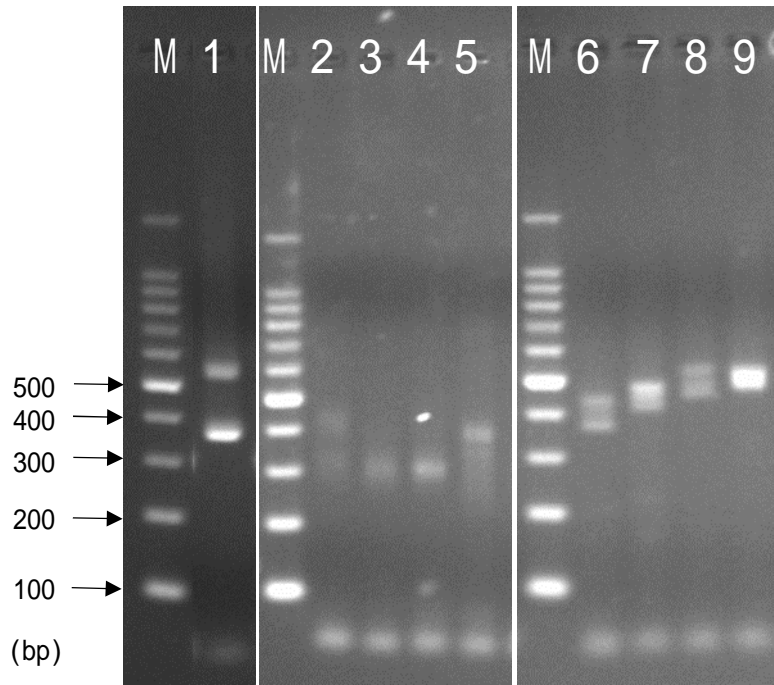


図1. マフグおよびシマフグ間交雑種および単一系統種の泳動パターン
M; マーカー, 1; マフグ - シマフグ, 2-5; マフグ, 6-9; シマフグ