

補足資料: Supplementary materials

Figure S + # Cause of death + # Type of figure

Cause of death

1. All causes
2. Cancer
3. Heart Diseases (excl. hypertensive heart diseases)
4. Cerebrovascular Diseases
5. Pneumonia
6. Unintentional Injuries
7. Unintentional Injuries (excl. disaster areas)
8. Suicide

Figure type

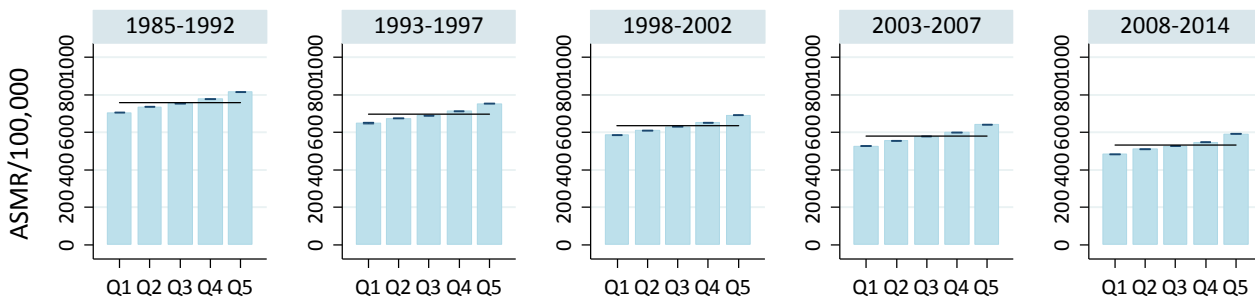
- A. Age-standardised mortality rate / 100,000 by quintile group of areal deprivation index
- B. Relative risks estimated by Poisson regression model (Q2-Q5 vs Q1)
- C. Relative Index of Inequalities (RII) based on the effect of Socio-Economic Position (SEP) estimated by Poisson regression model
- D. RII (1985-2014) and changes of RII
- E. Standardised Mortality Ratio (SMR) and RII by prefecture

Fig S1.

All cause of death

Male

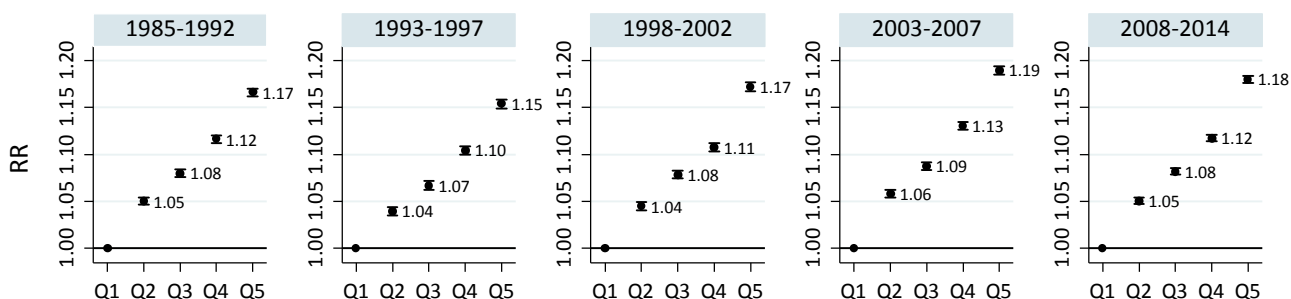
ASMR: Std.pop 1985



A-1

ADI quintile

Relative Risk estimated by Poisson regression model

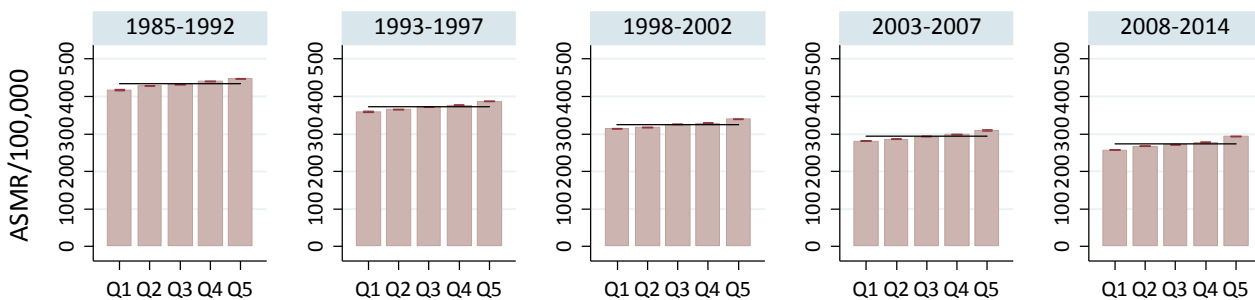


B-1

Quintile of Areal Deprivation Index

Female

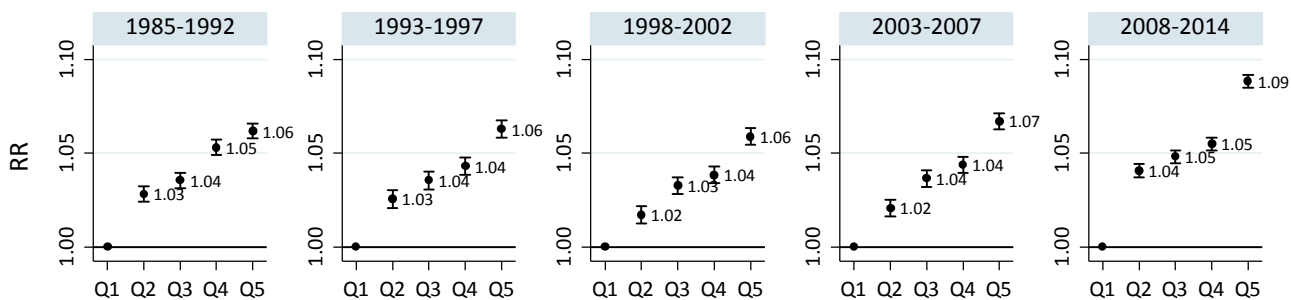
ASMR: Std.pop 1985



A-2

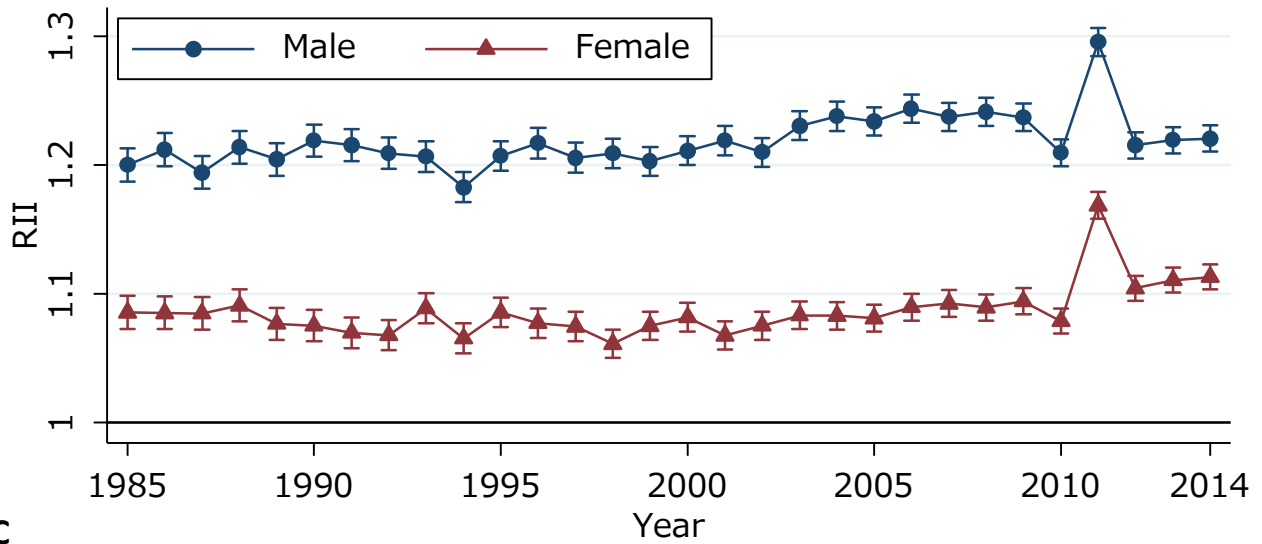
ADI quintile

Relative Risk estimated by Poisson regression model

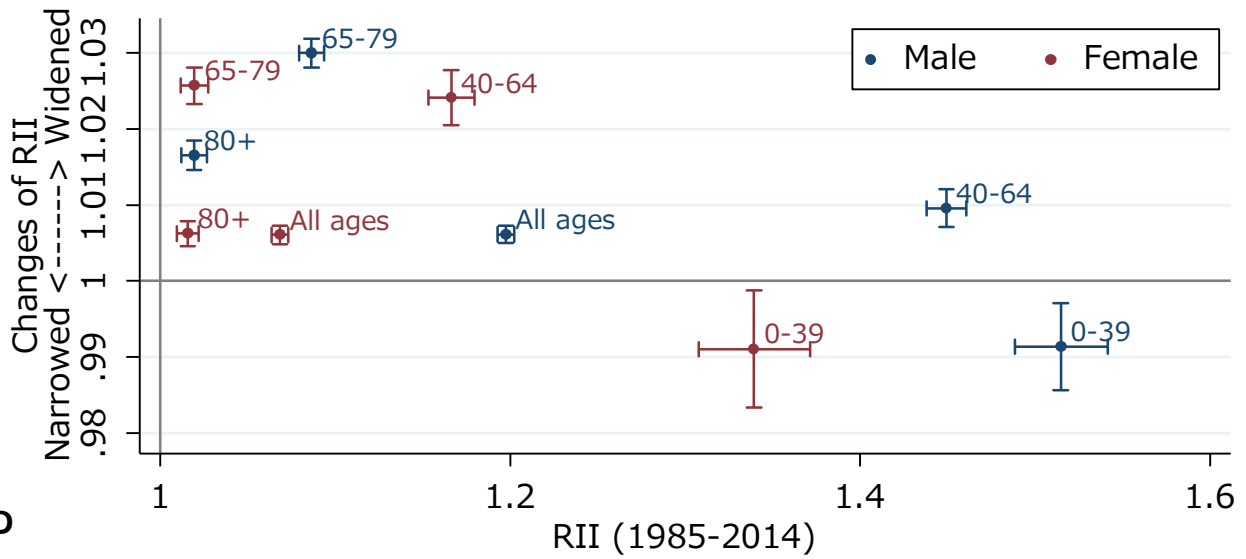


B-2

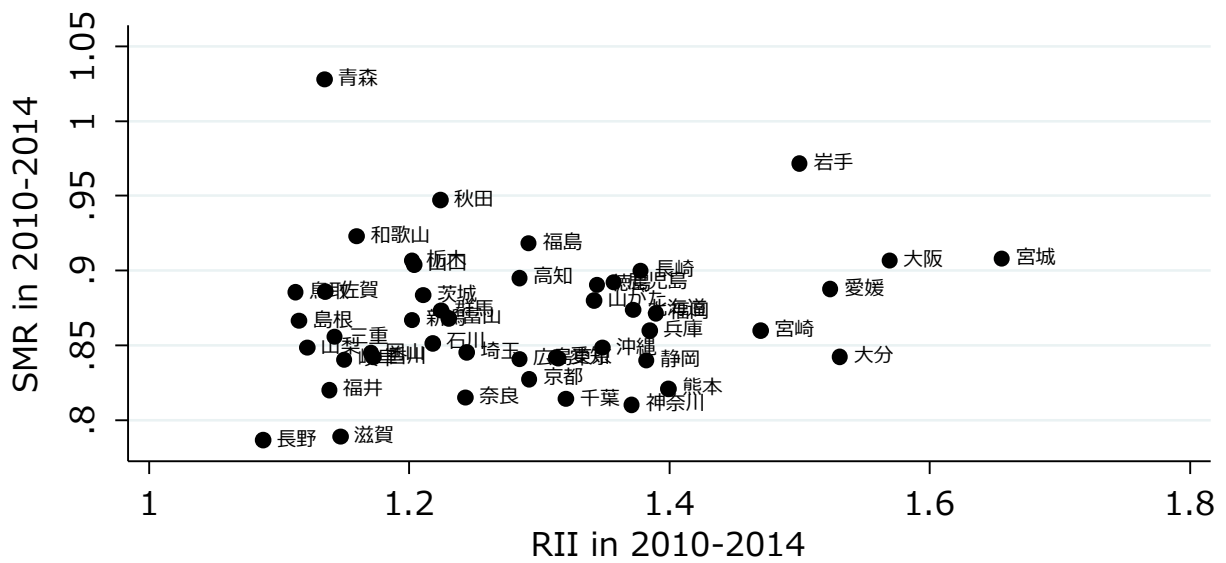
Quintile of Areal Deprivation Index



C



D



E

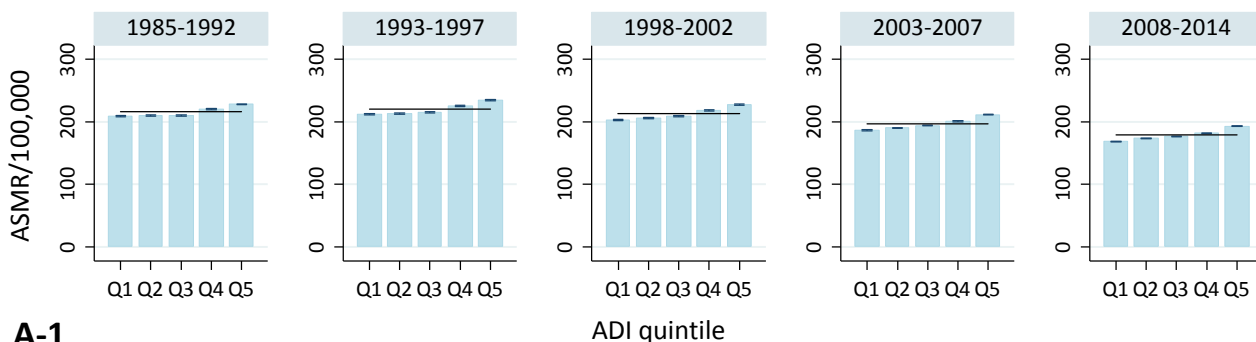
All cause of death

Fig S2.

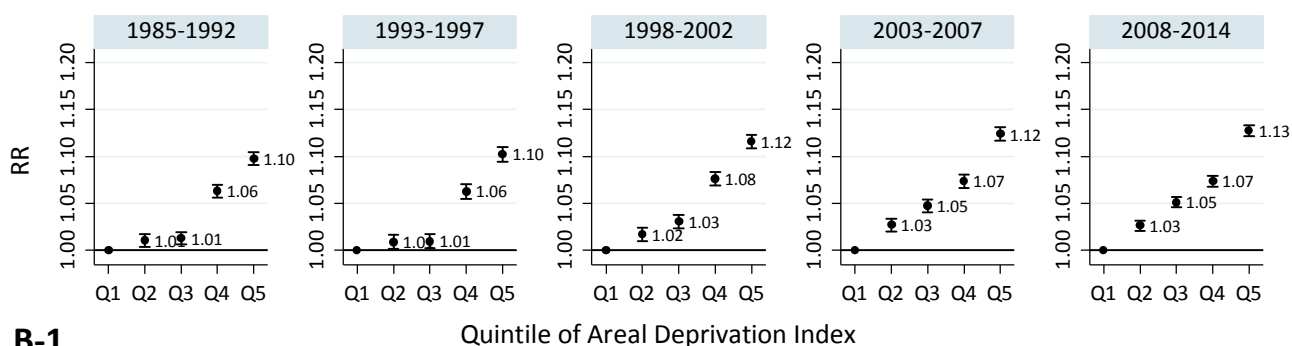
Cancer

Male

ASMR: Std.pop 1985

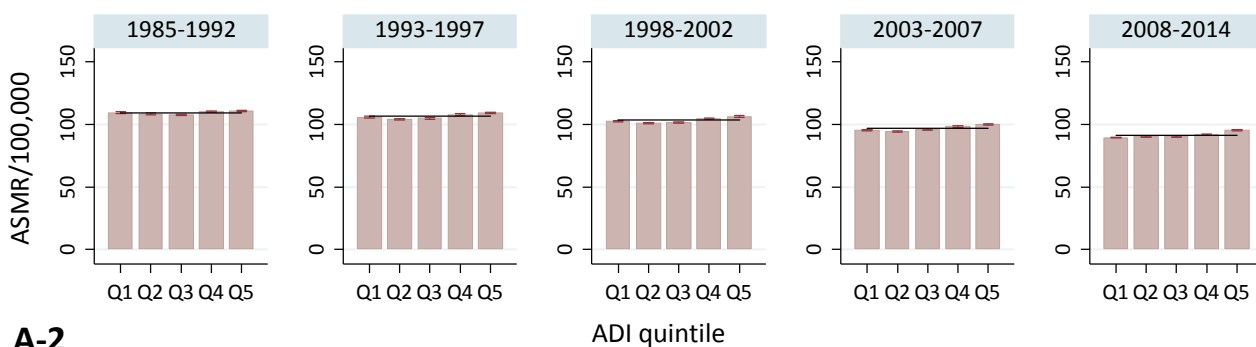


Relative Risk estimated by Poisson regression model

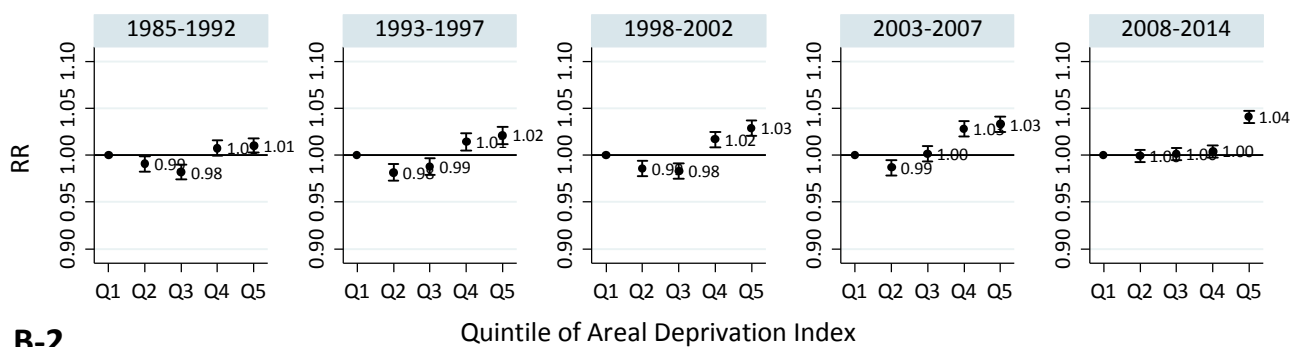


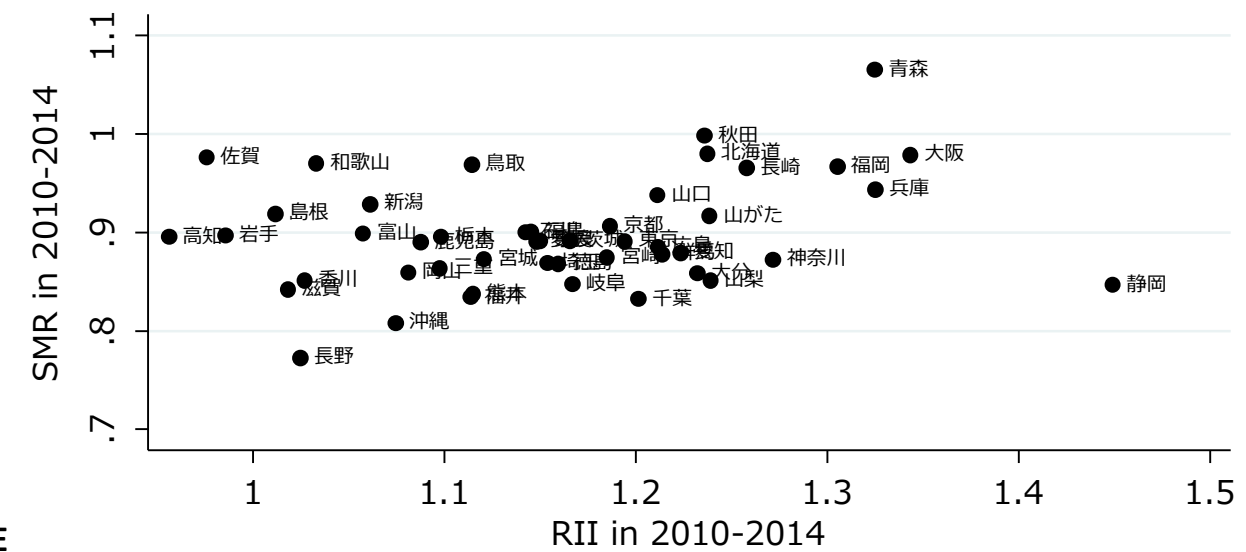
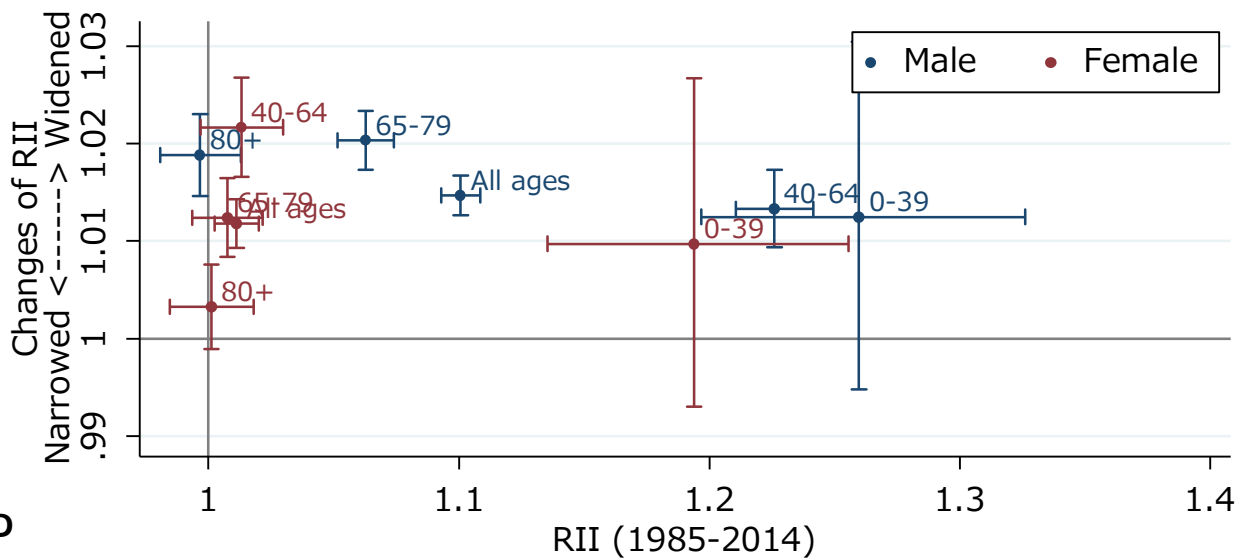
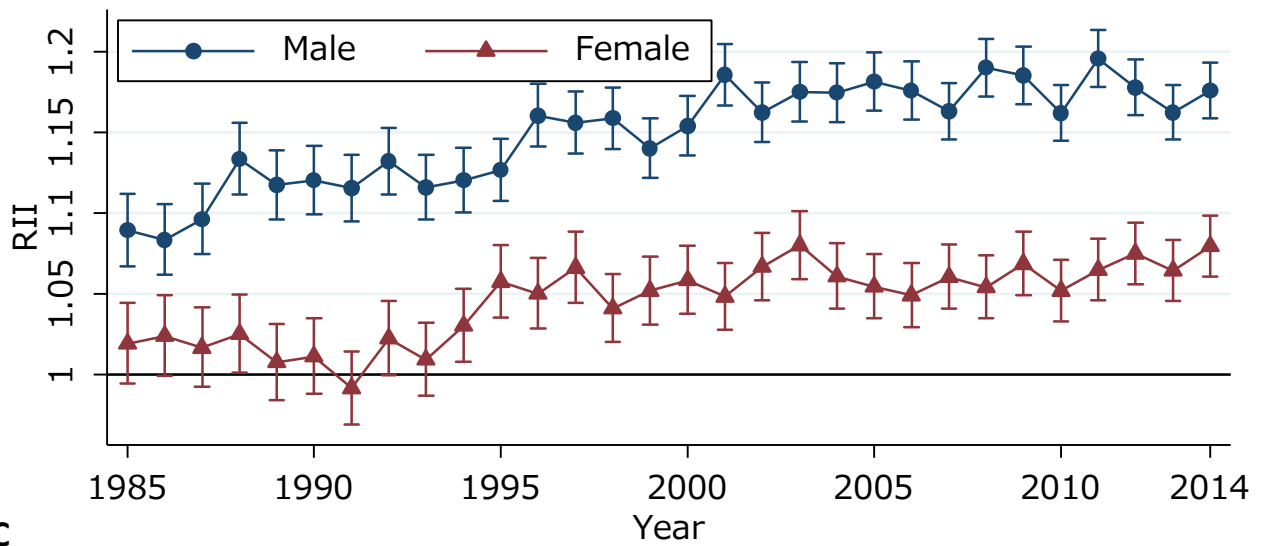
Female

ASMR: Std.pop 1985



Relative Risk estimated by Poisson regression model



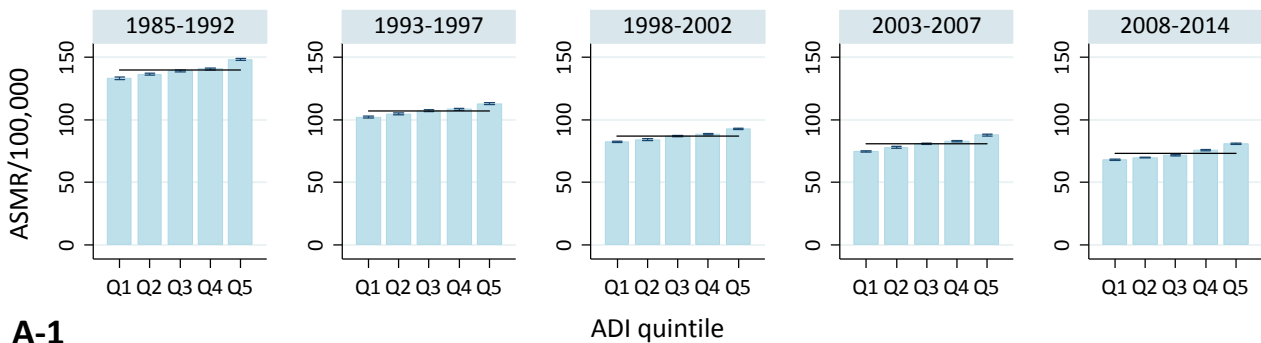


Cancer

Fig S3. Heart Diseases (excl. hypertensive heart diseases)

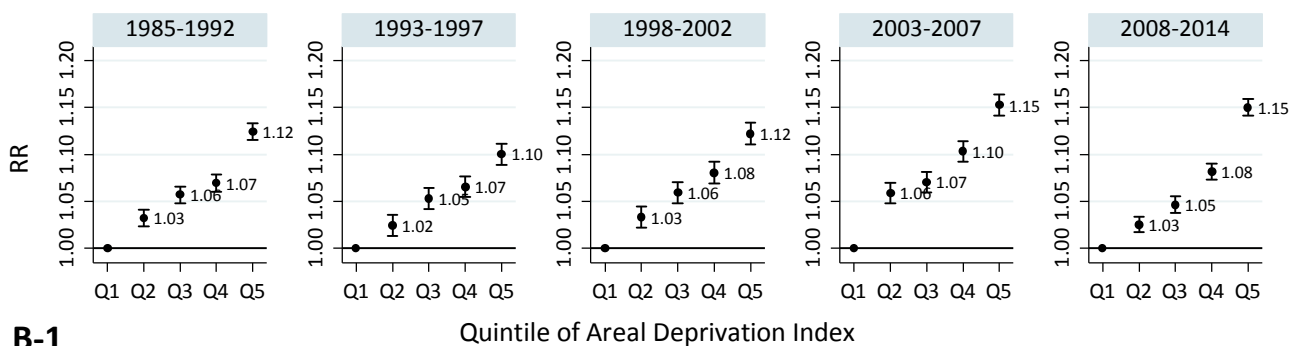
Male

ASMR: Std.pop 1985



A-1

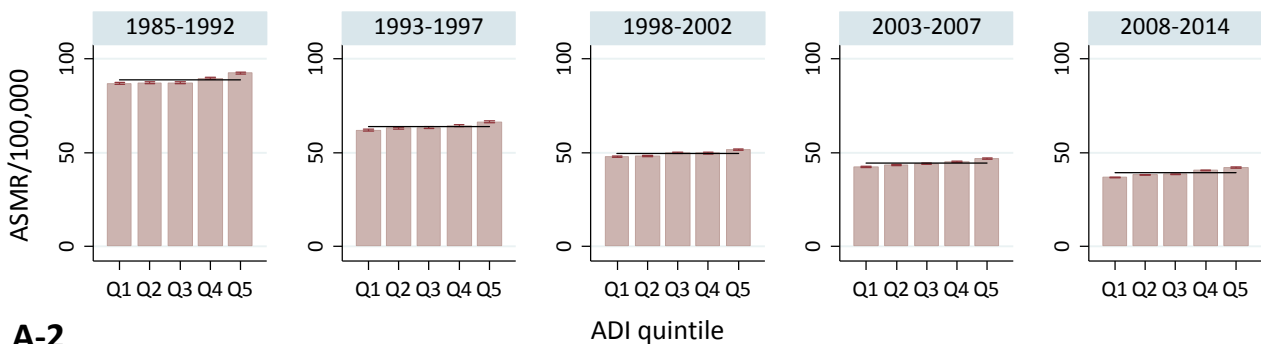
Relative Risk estimated by Poisson regression model



B-1

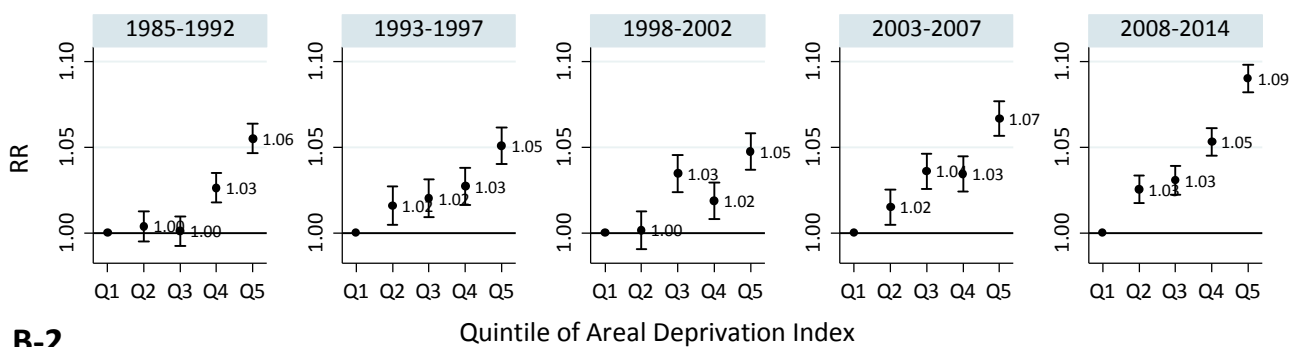
Female

ASMR: Std.pop 1985

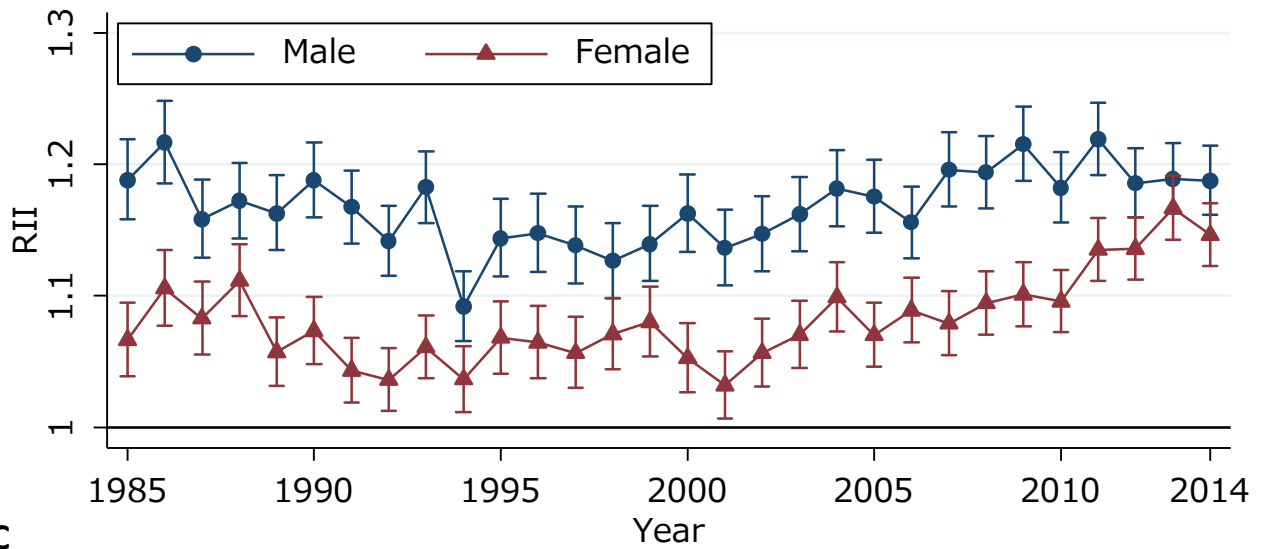


A-2

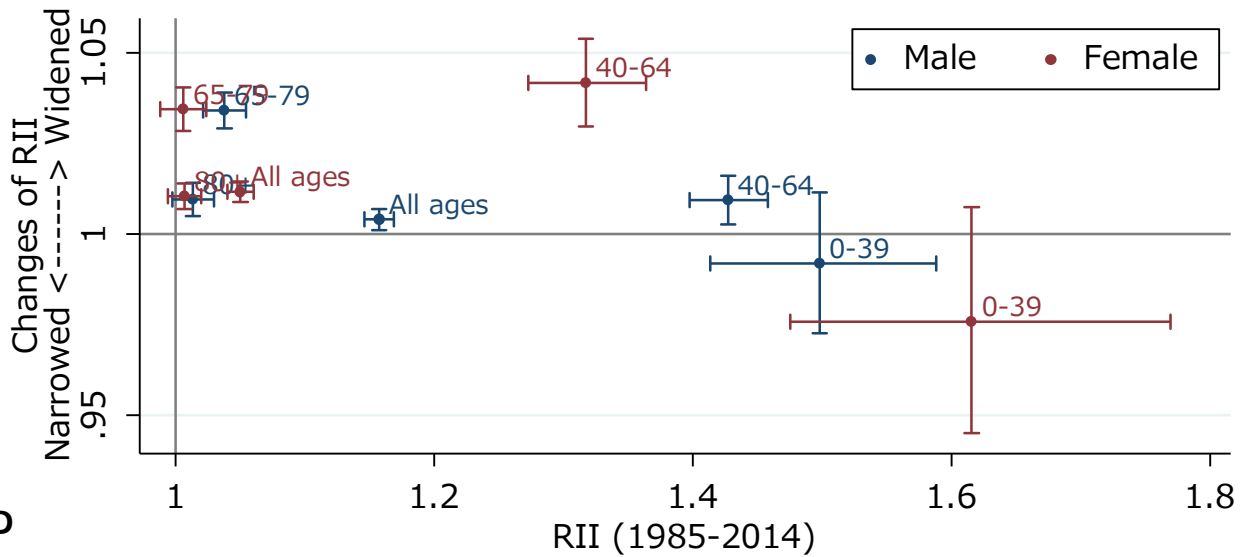
Relative Risk estimated by Poisson regression model



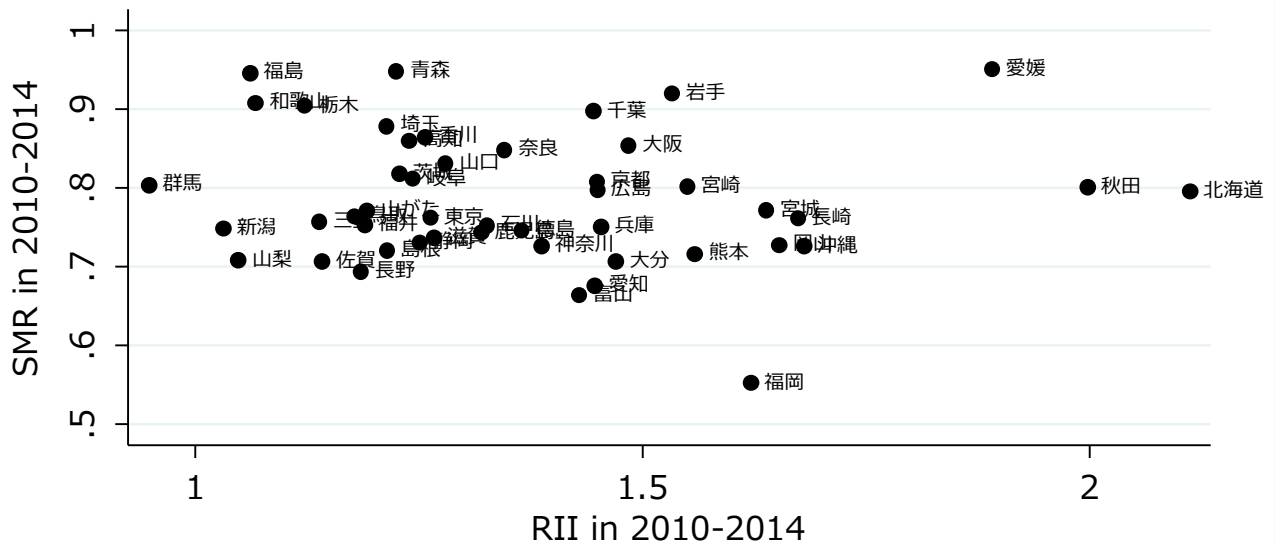
B-2



C



D



E

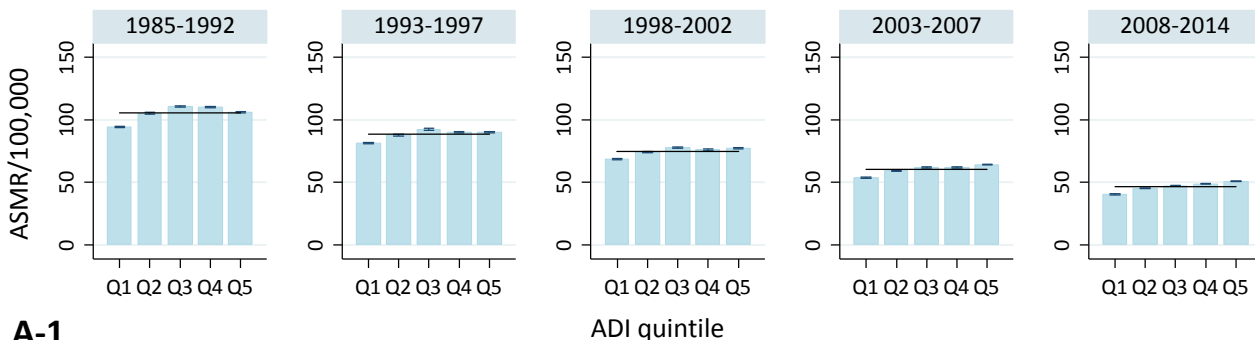
Heart Diseases (excluding hypertensive heart diseases)

Fig S4.

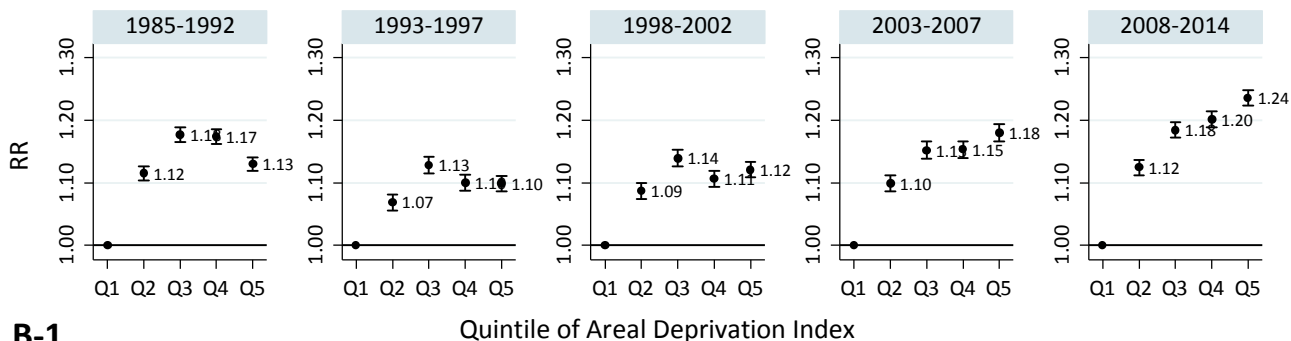
Cerebrovascular Diseases

Male

ASMR: Std.pop 1985

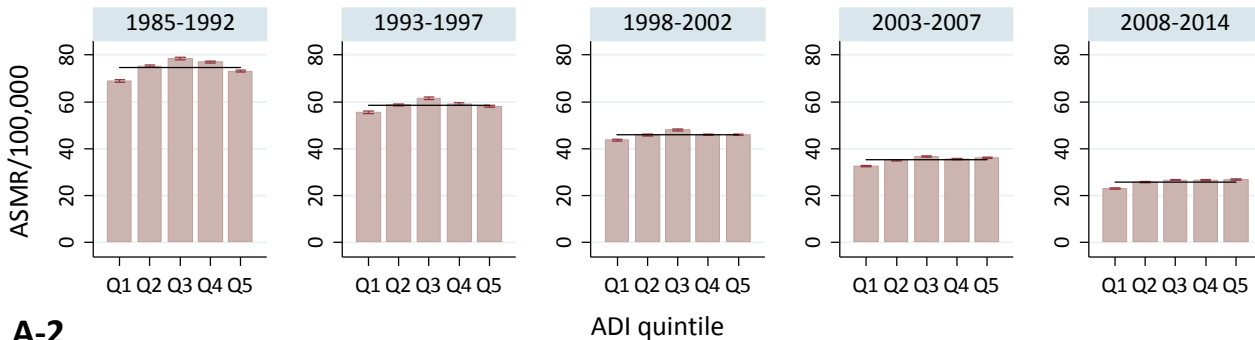


Relative Risk estimated by Poisson regression model

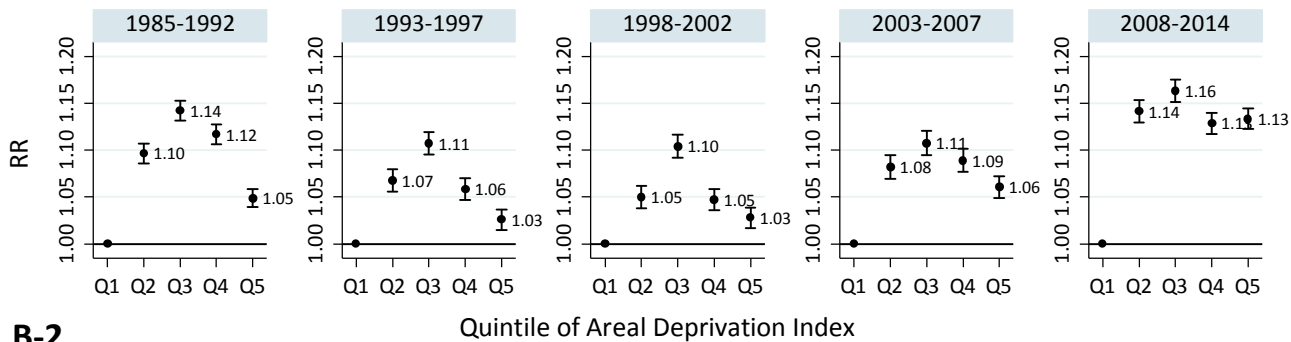


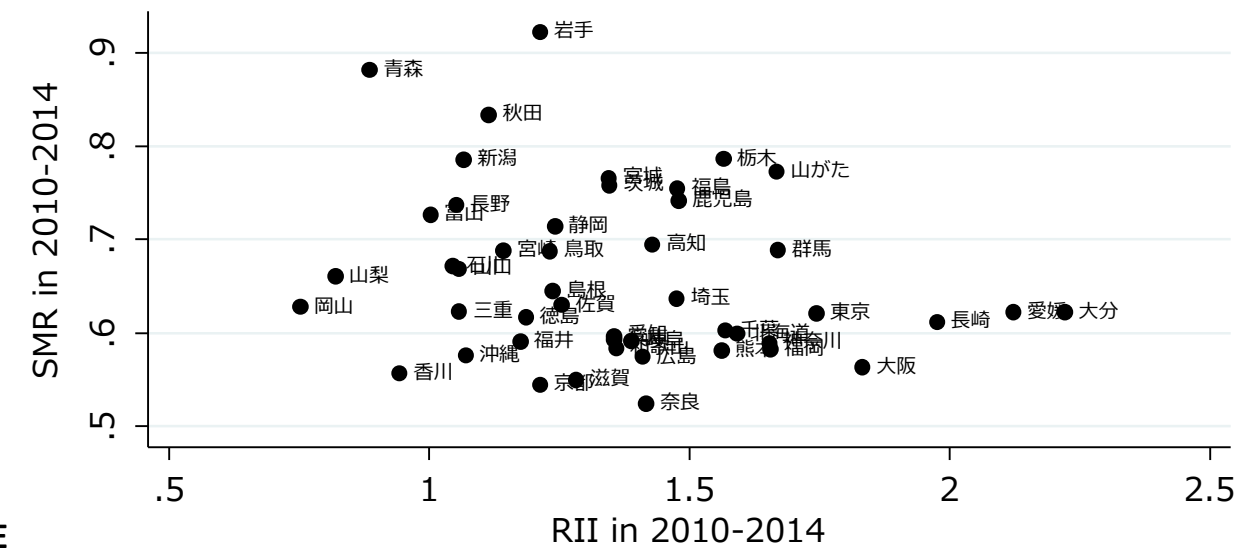
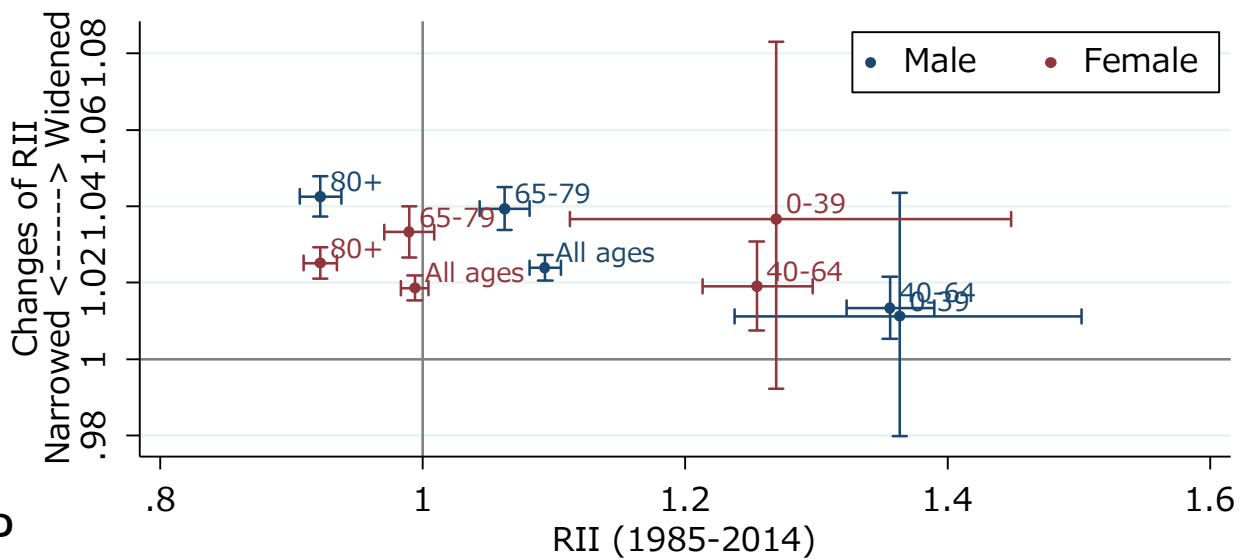
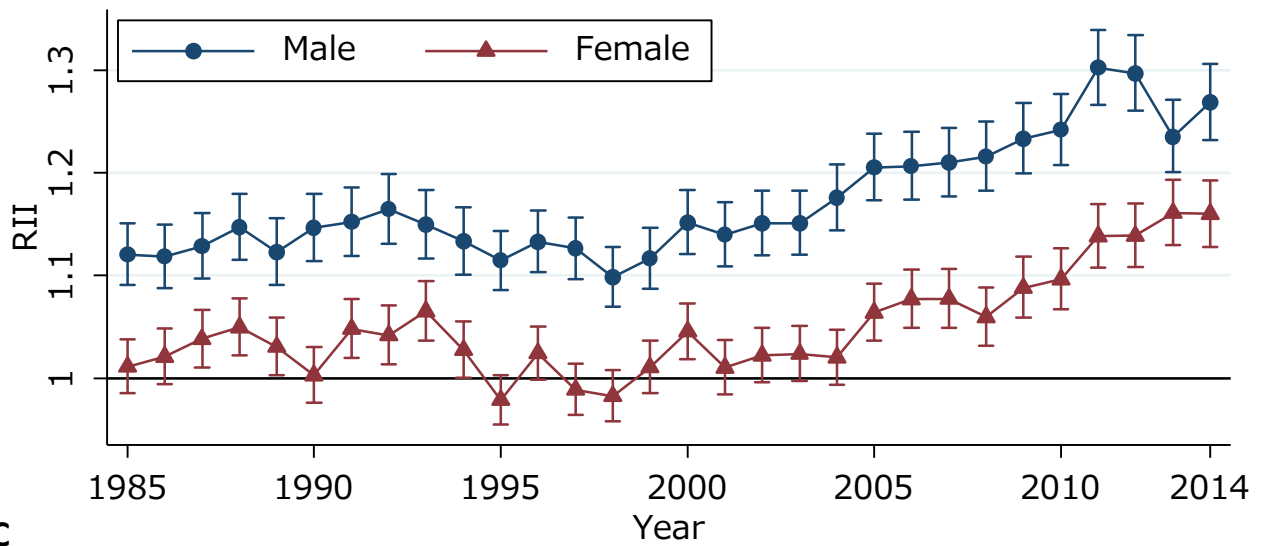
Female

ASMR: Std.pop 1985



Relative Risk estimated by Poisson regression model





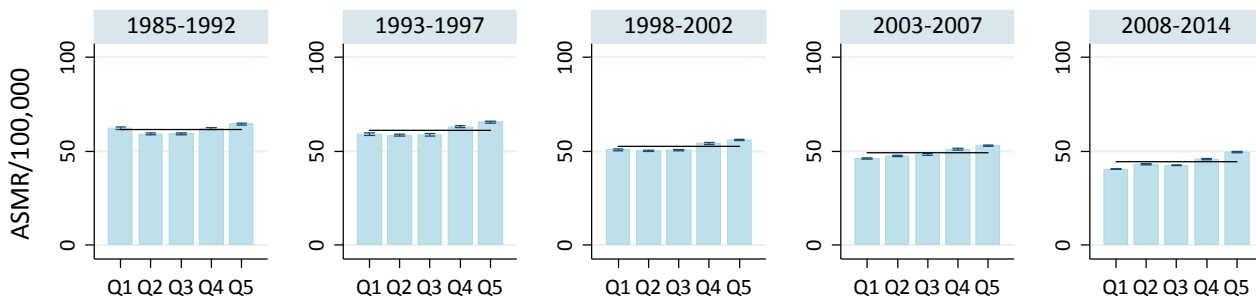
Cerebrovascular Diseases

Fig S5.

Pneumonia

Male

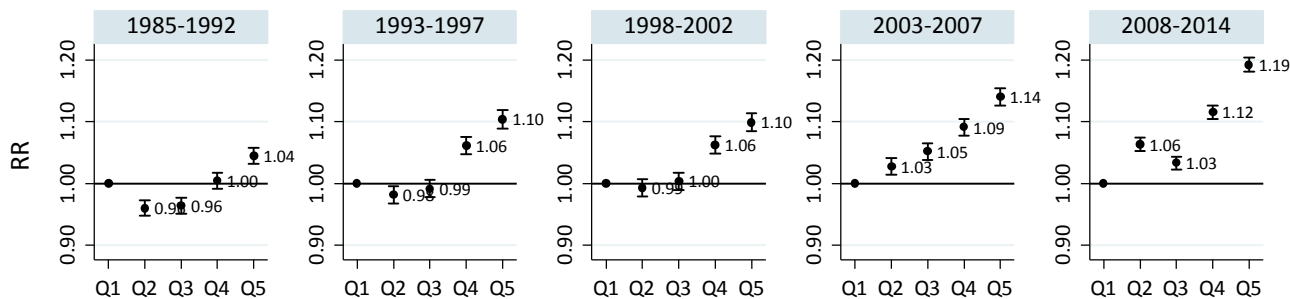
ASMR: Std.pop 1985



A-1

ADI quintile

Relative Risk estimated by Poisson regression model

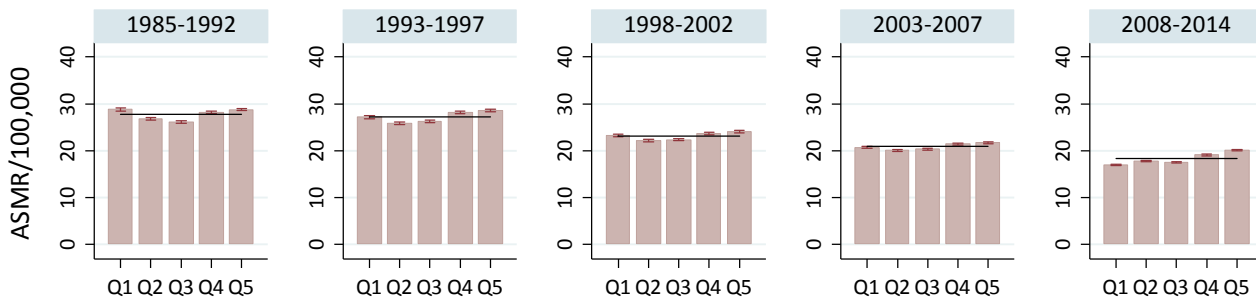


B-1

Quintile of Areal Deprivation Index

Female

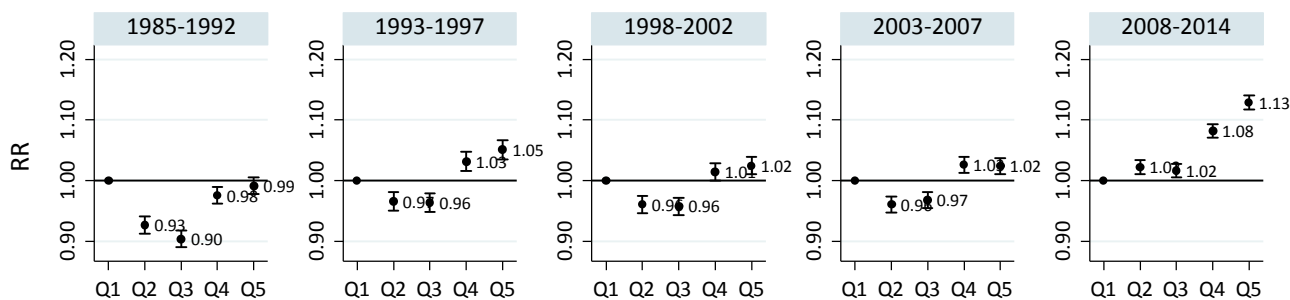
ASMR: Std.pop 1985



A-2

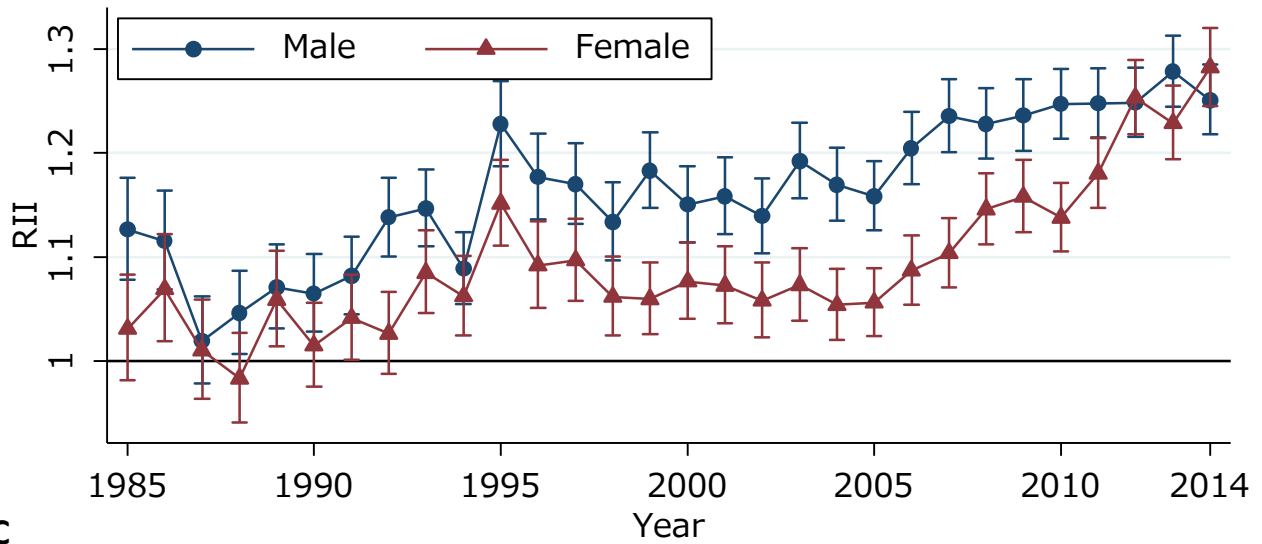
ADI quintile

Relative Risk estimated by Poisson regression model

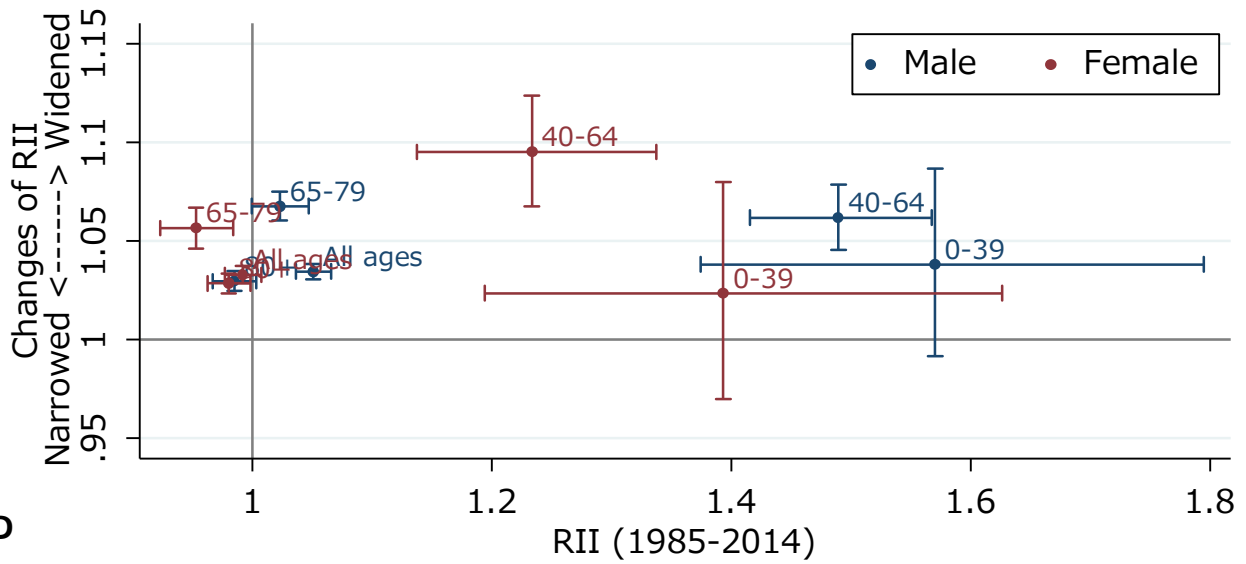


B-2

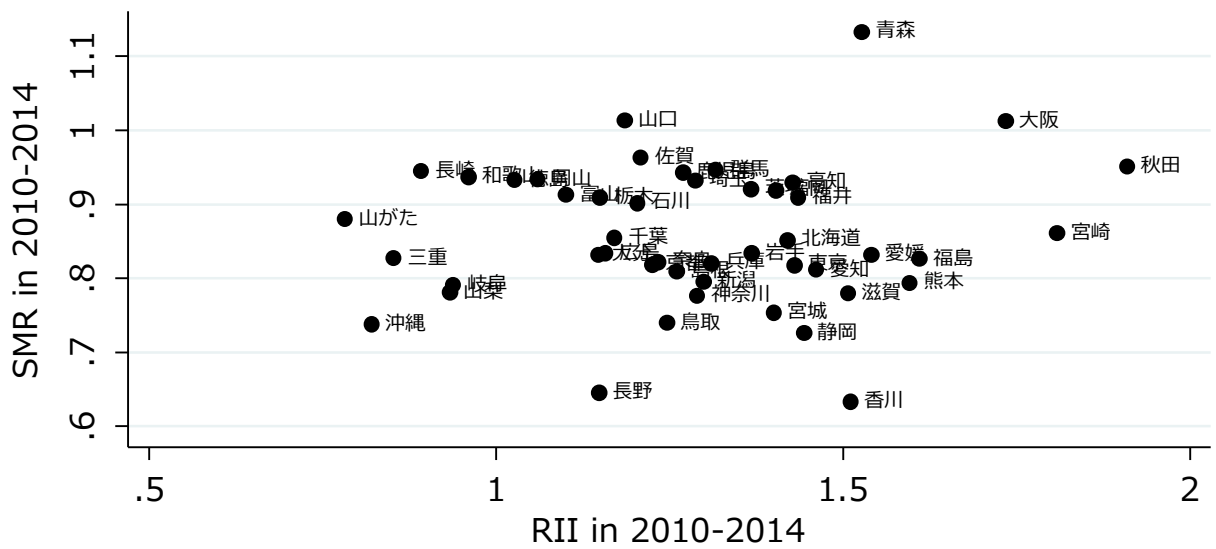
Quintile of Areal Deprivation Index



C



D



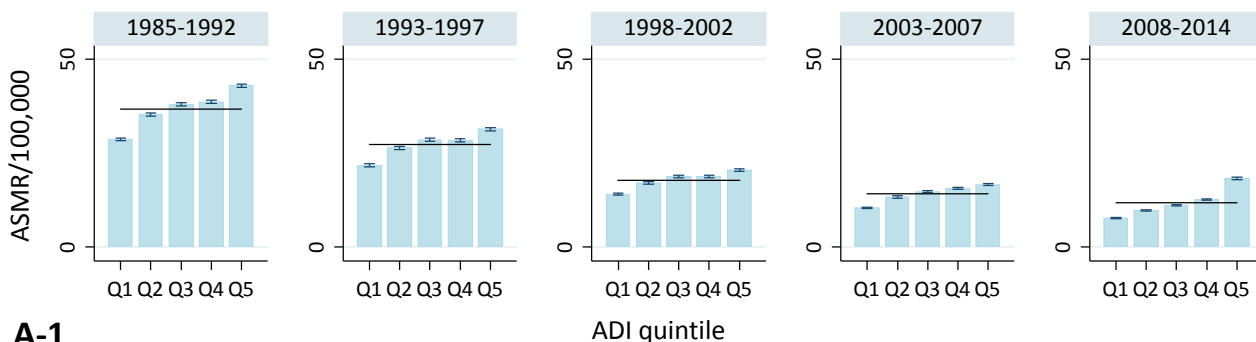
E

Pneumonia

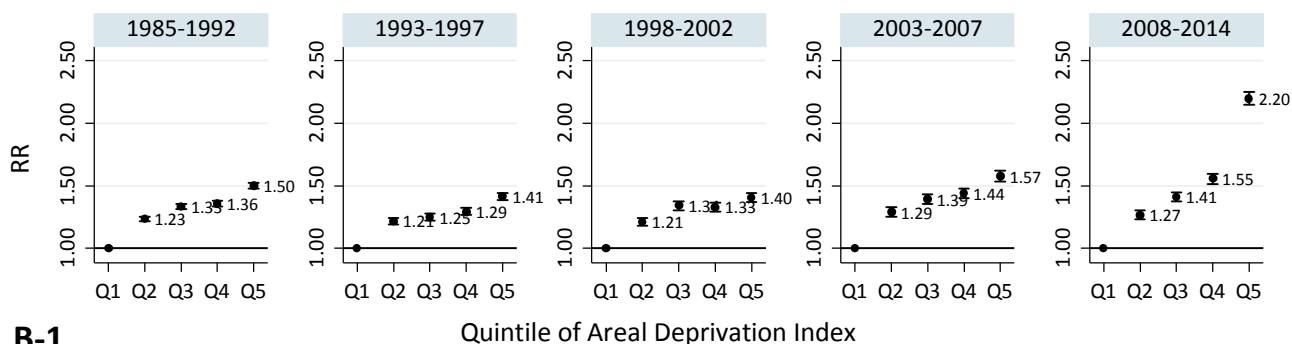
Fig S6. Unintentional injuries

Male

ASMR: Std.pop 1985

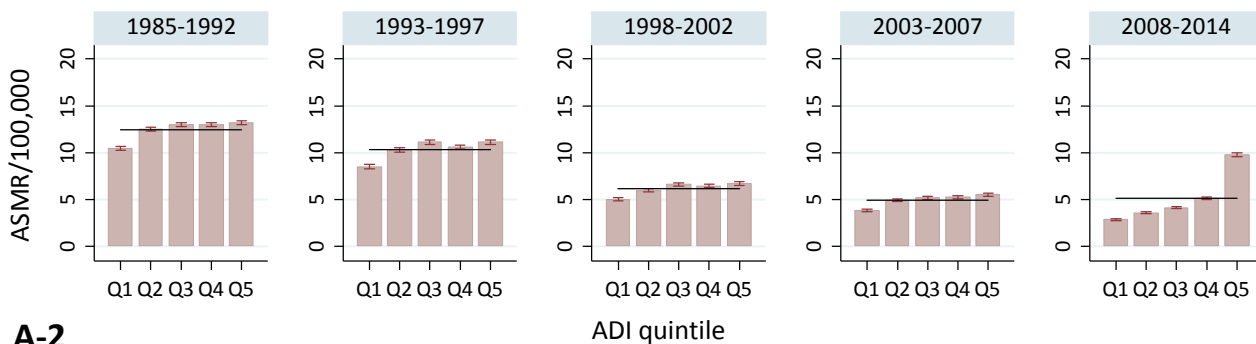


Relative Risk estimated by Poisson regression model

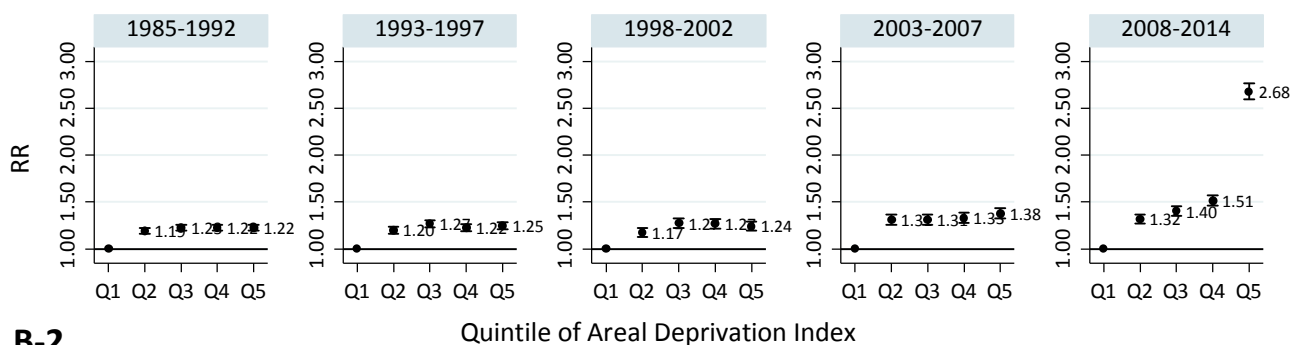


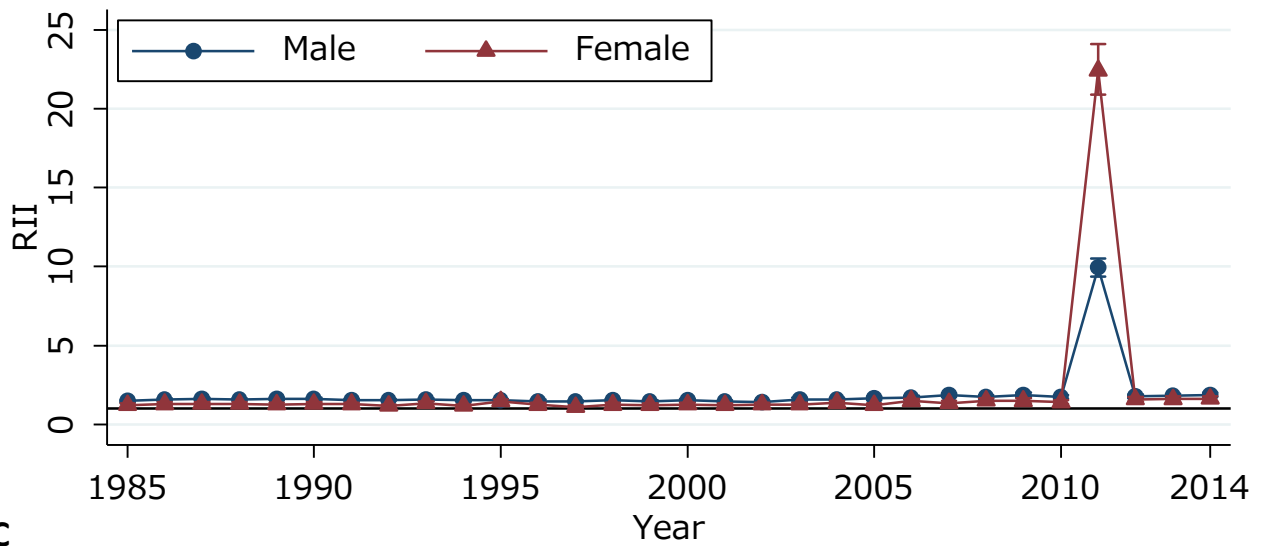
Female

ASMR: Std.pop 1985

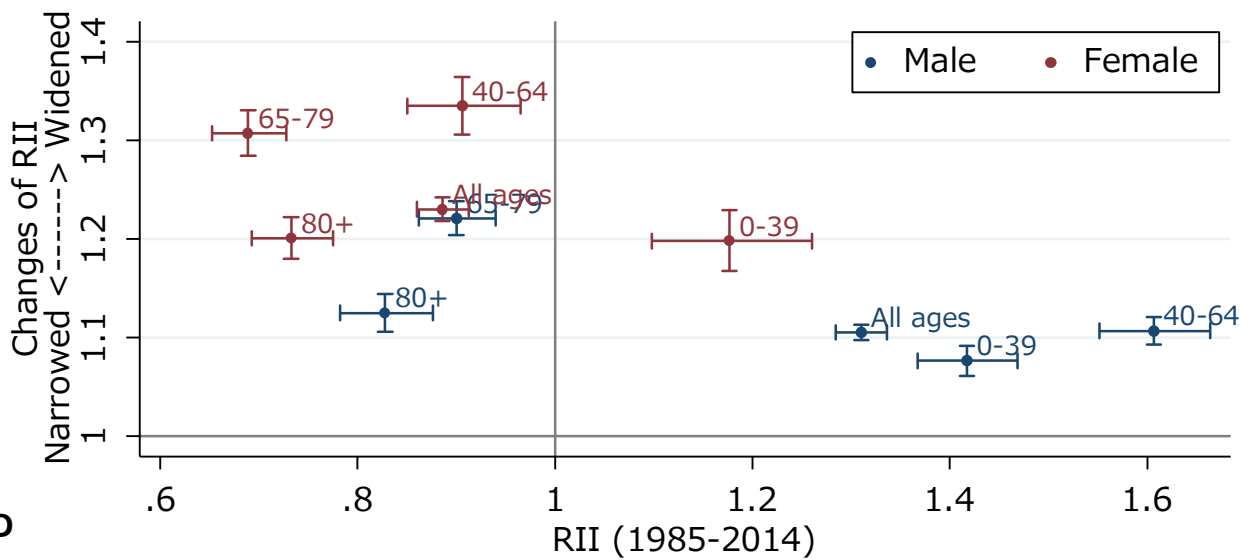


Relative Risk estimated by Poisson regression model

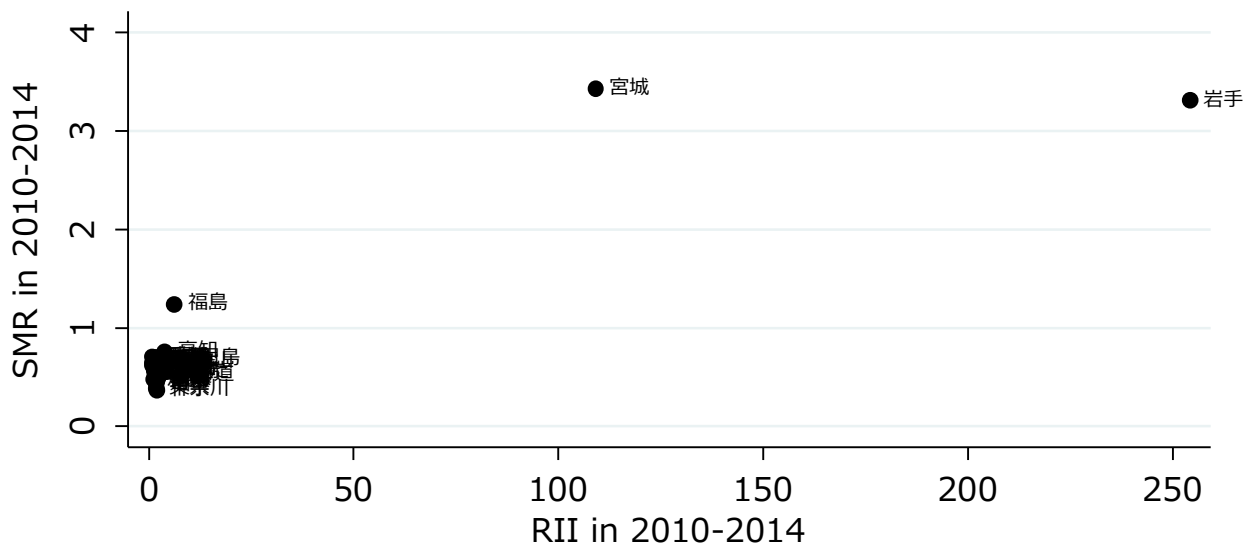




C



D

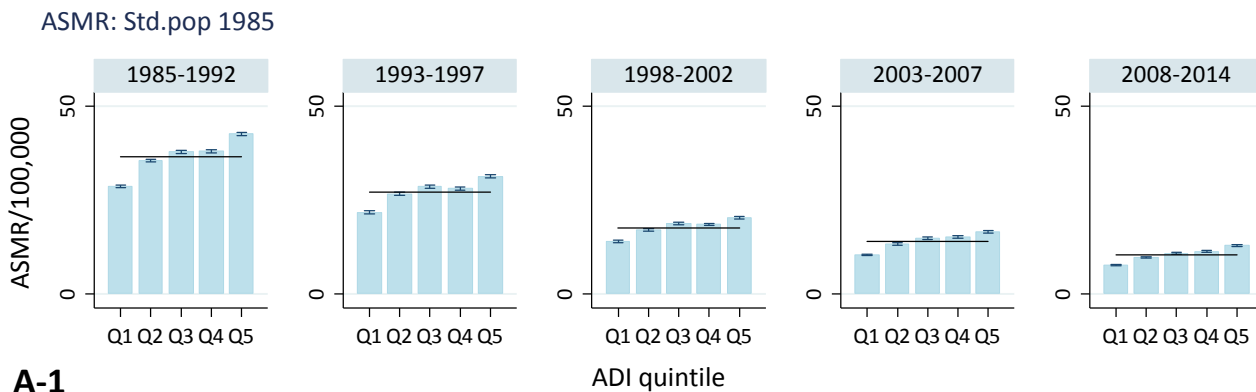


E

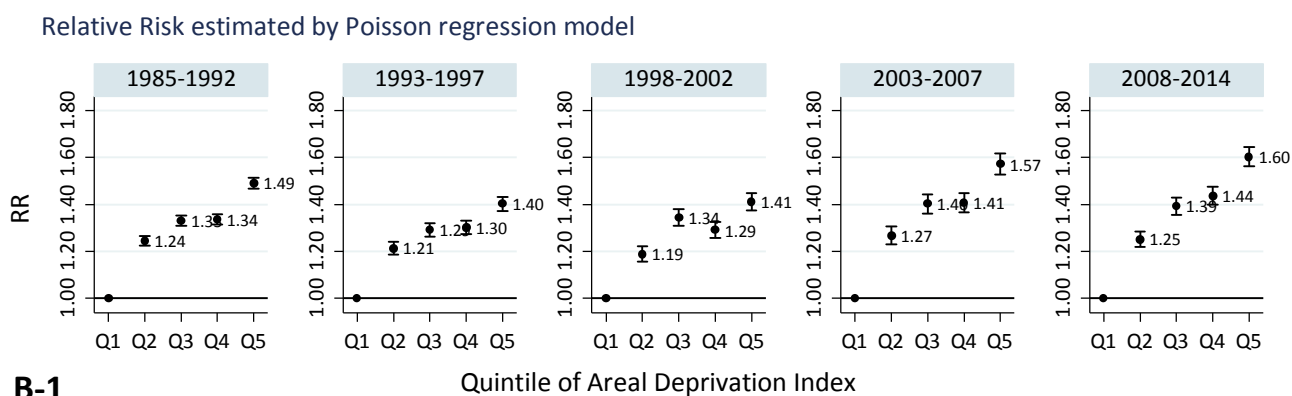
Unintentional injuries

Fig S7. Unintentional injuries (except. disaster area)

Male

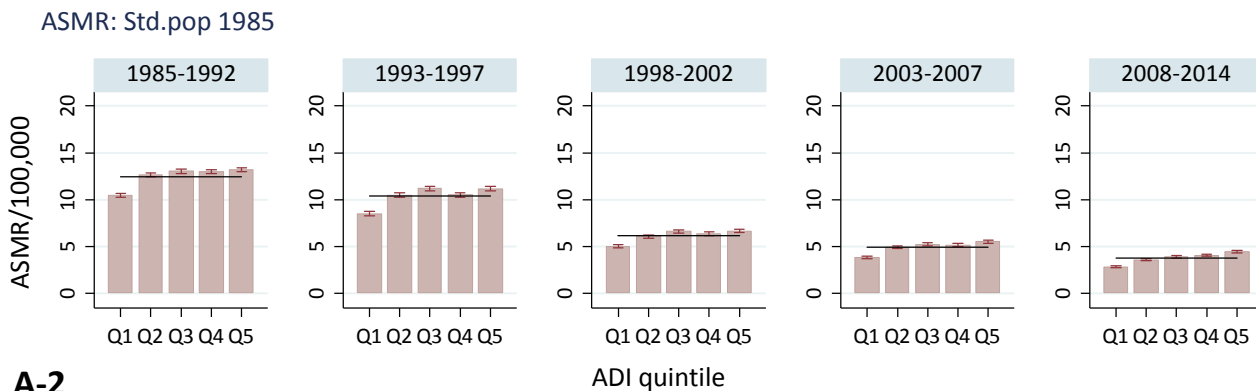


A-1

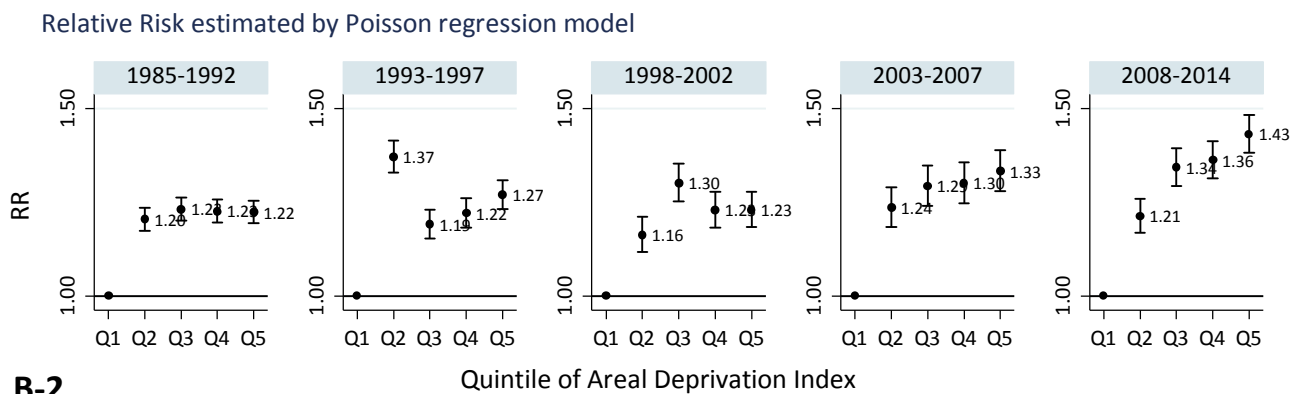


B-1

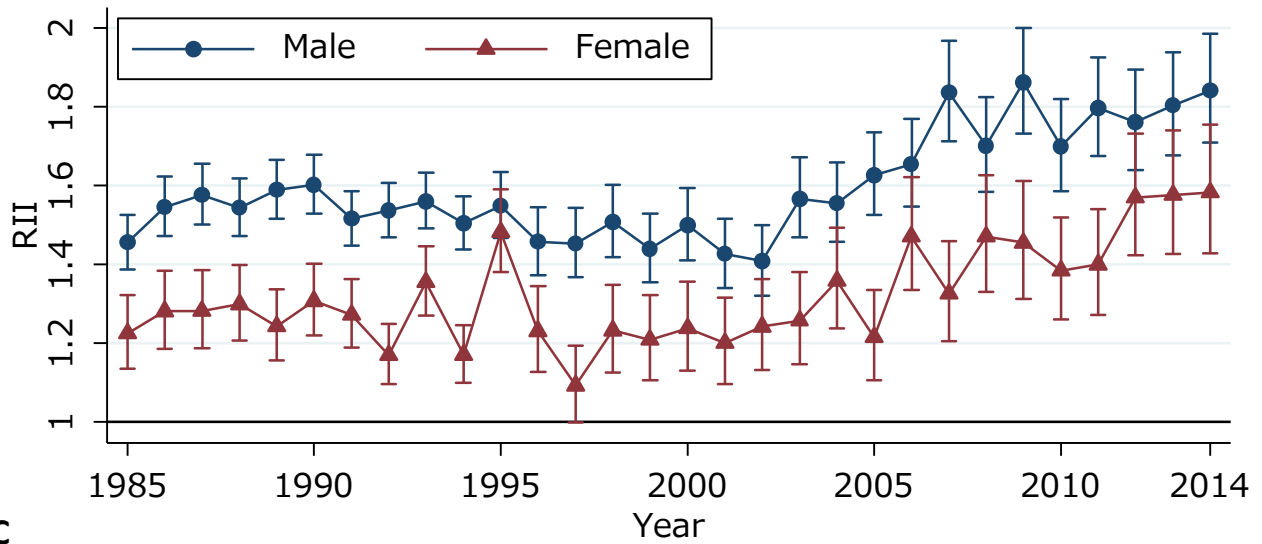
Female



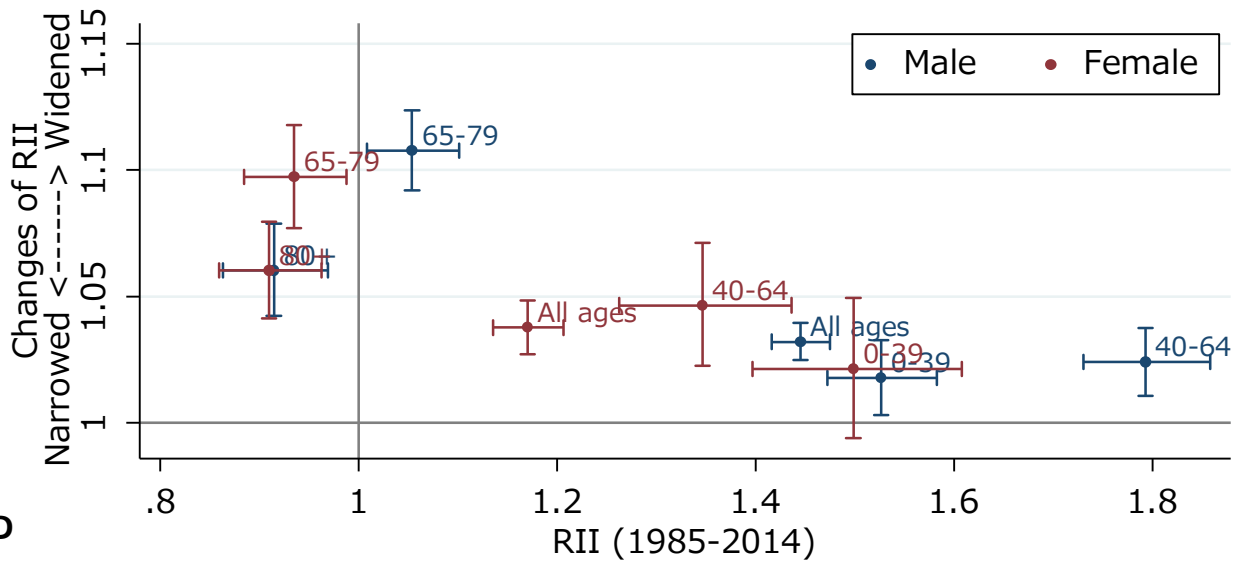
A-2



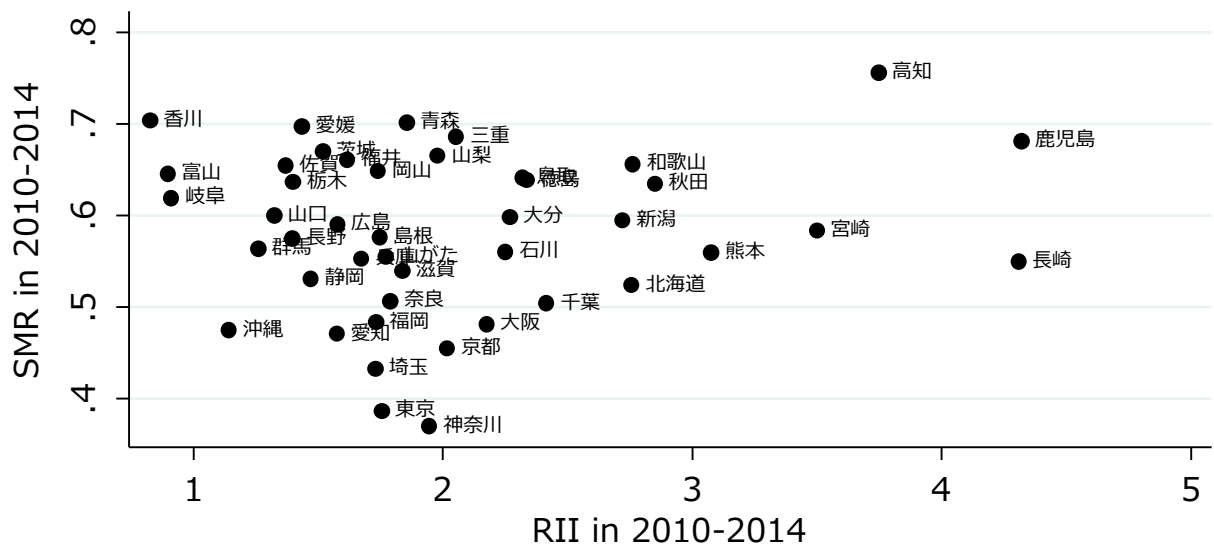
B-2



C



D



E

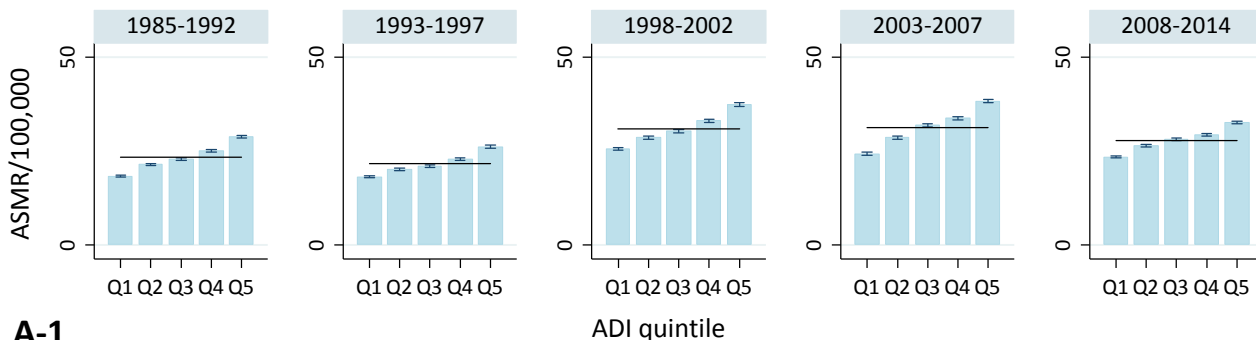
Unintentional injuries (except. disaster area)

Fig S8.

Suicide

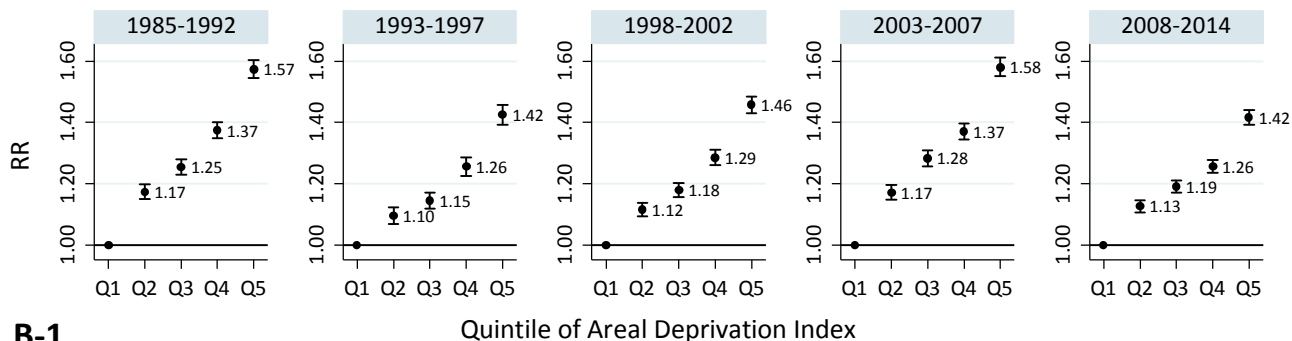
Male

ASMR: Std.pop 1985



A-1

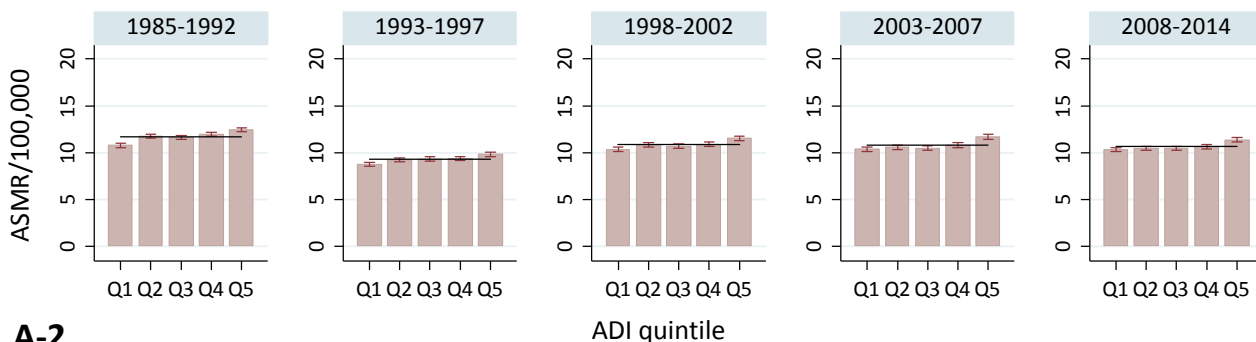
Relative Risk estimated by Poisson regression model



B-1

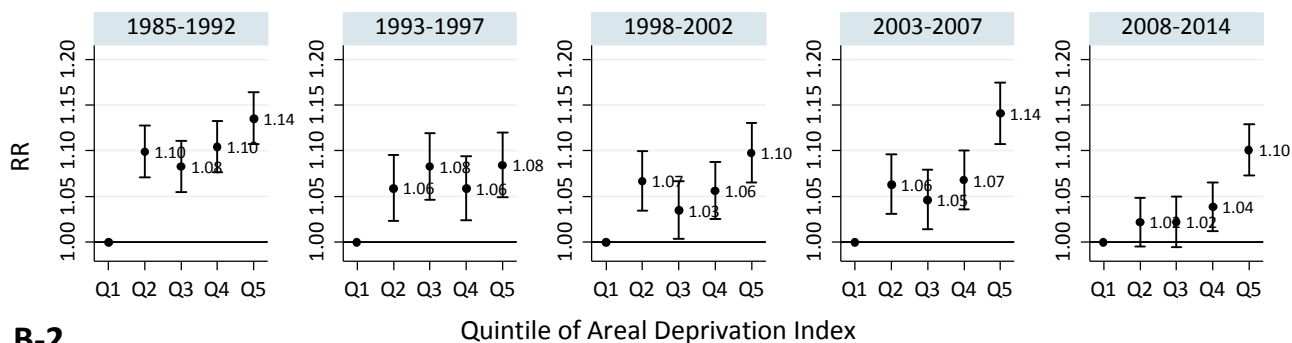
Female

ASMR: Std.pop 1985

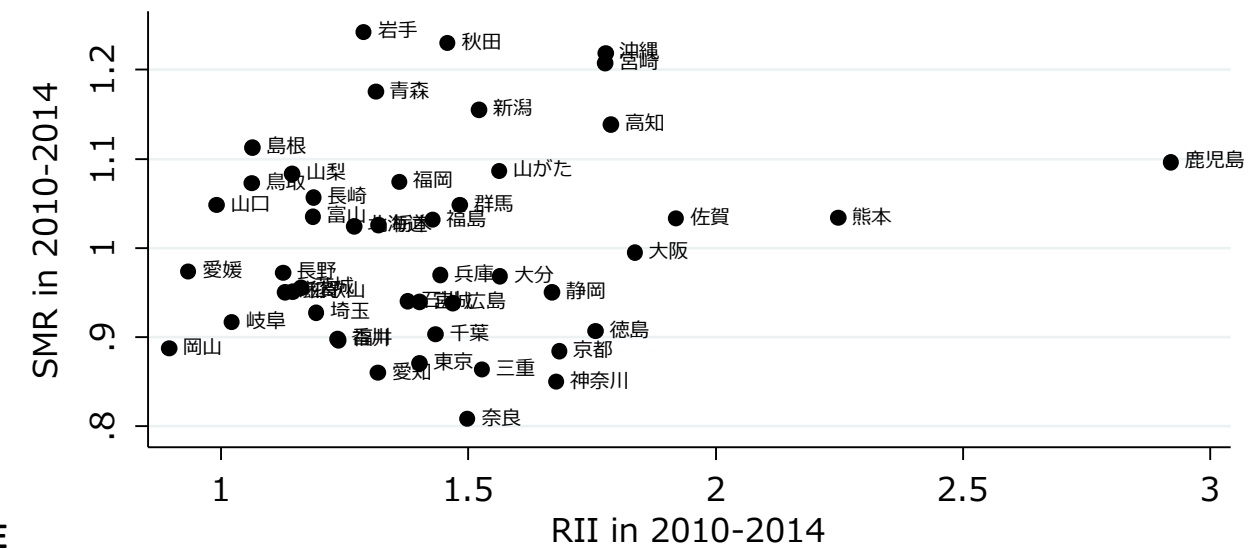
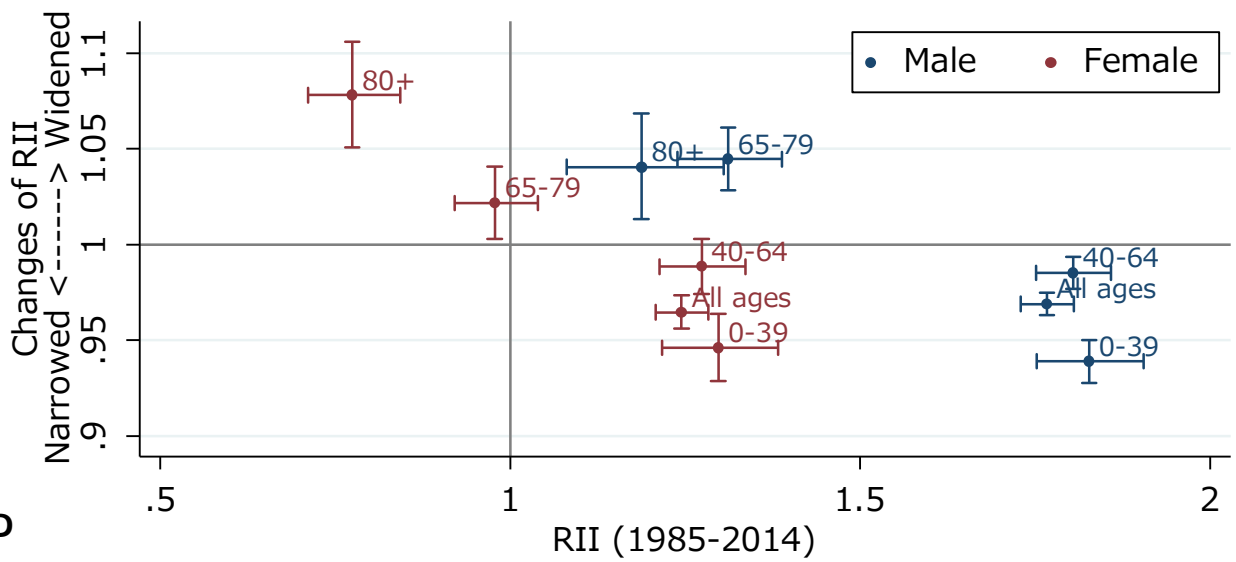
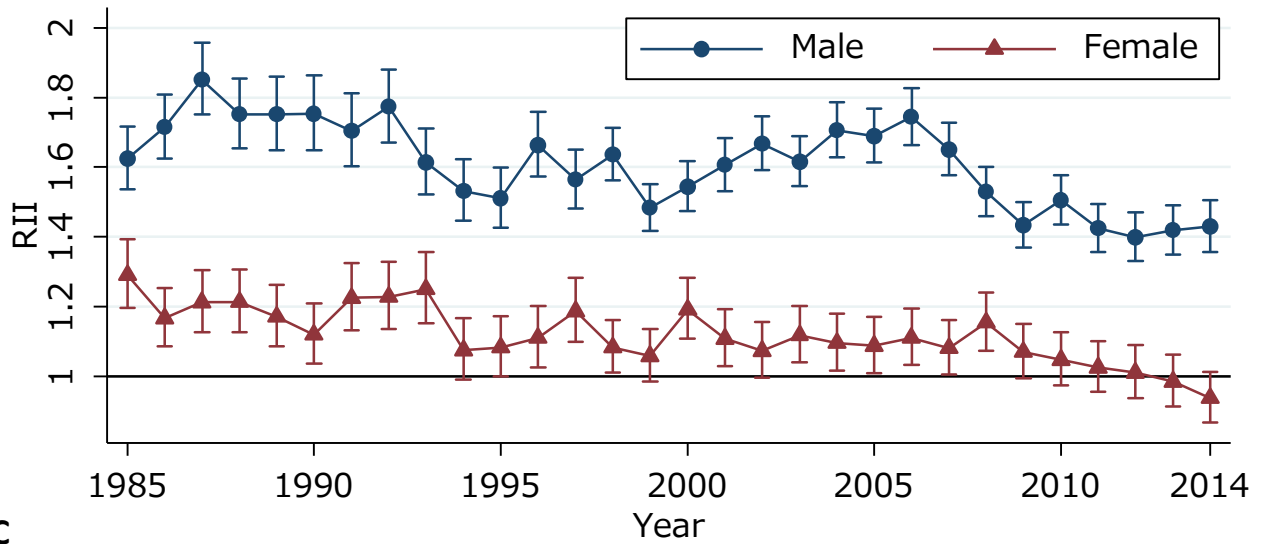


A-2

Relative Risk estimated by Poisson regression model



B-2



Suicide