

Figure 3-7. 60 min

mAU

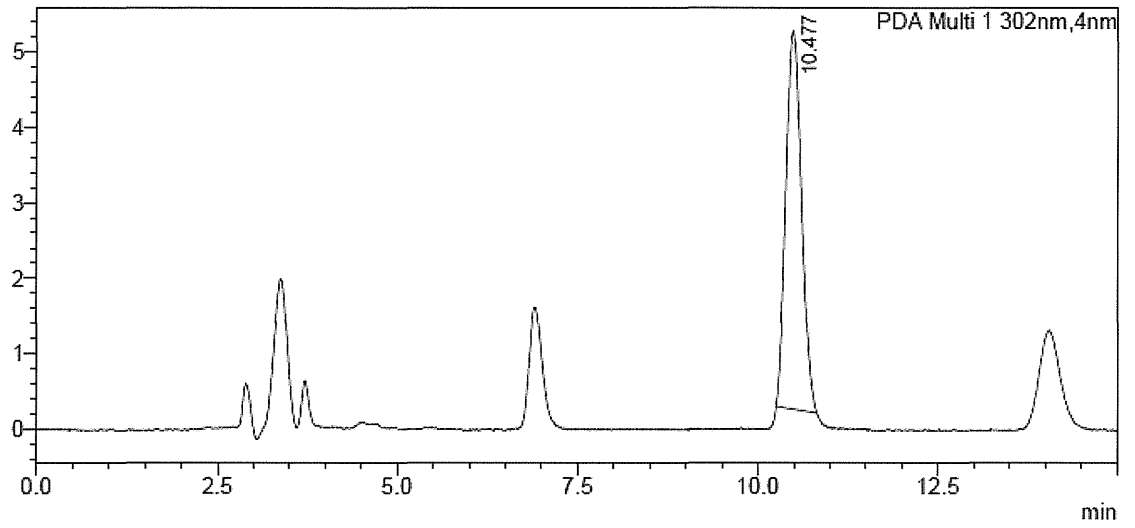


Figure 3-8. 90 min

mAU

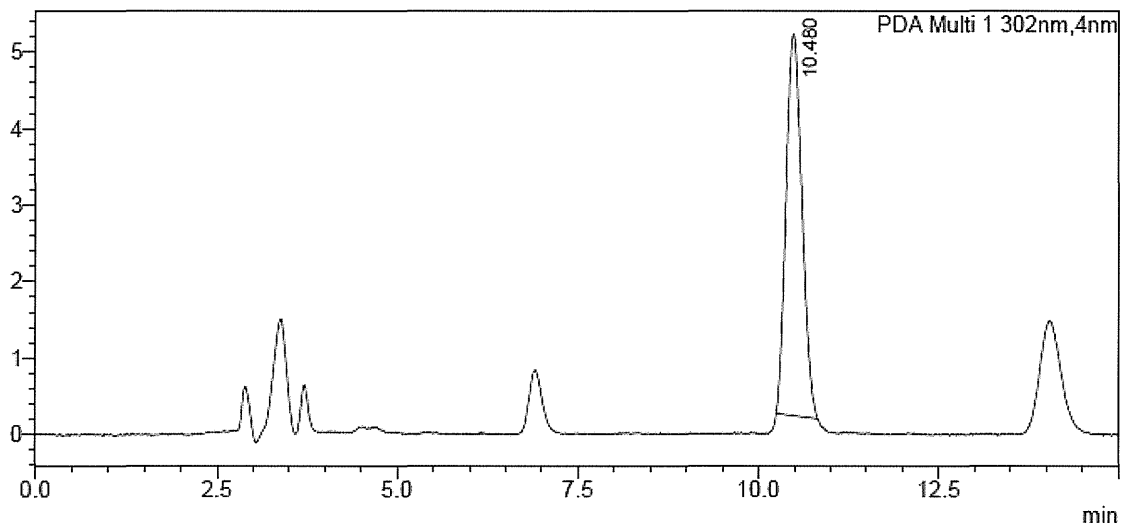


Figure 3-9. 120 min

mAU

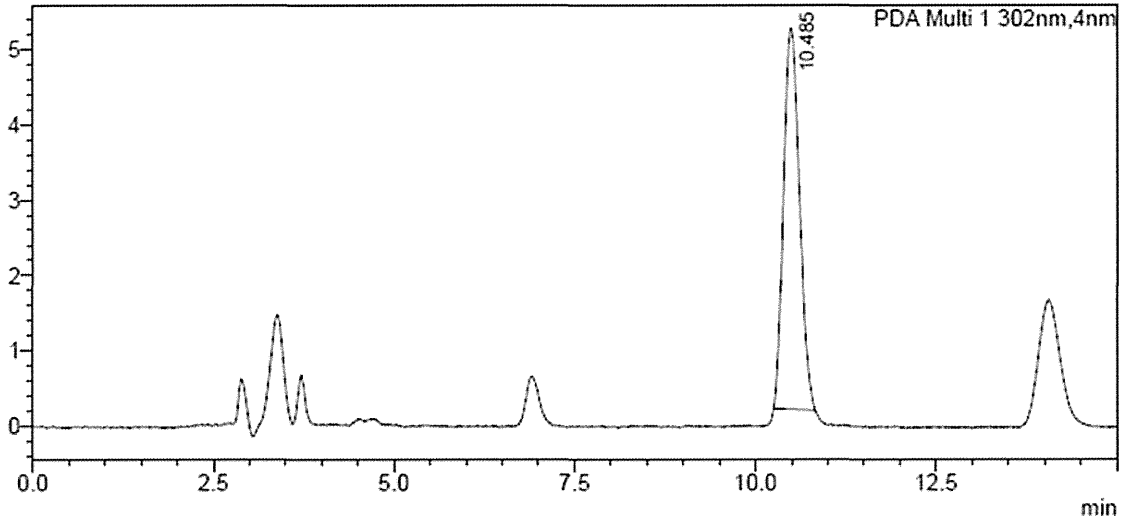


Figure 4. Dr.Reddy's 製サンプル溶出プロファイル

Figure 4-1. 13-002-OME-DRR-15-5 (個人輸入 2013)

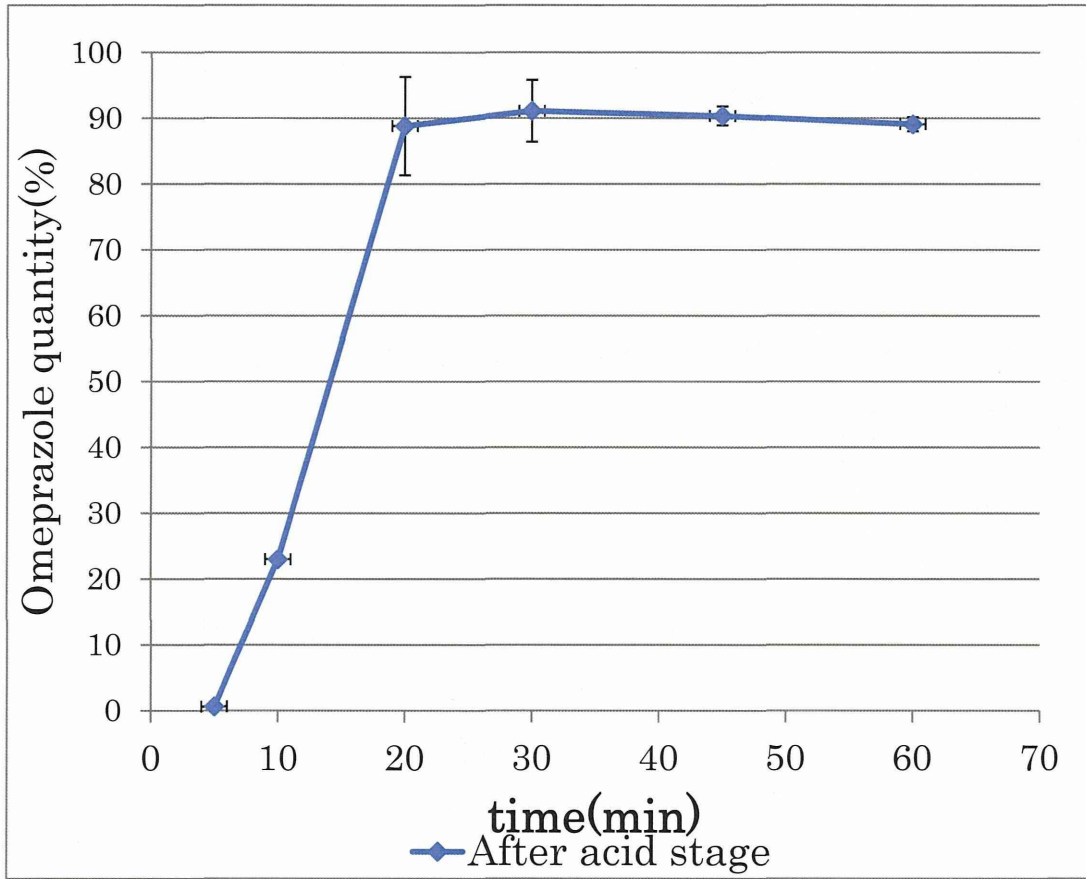


Figure 4-2. B-054 (Myanmar 2014)

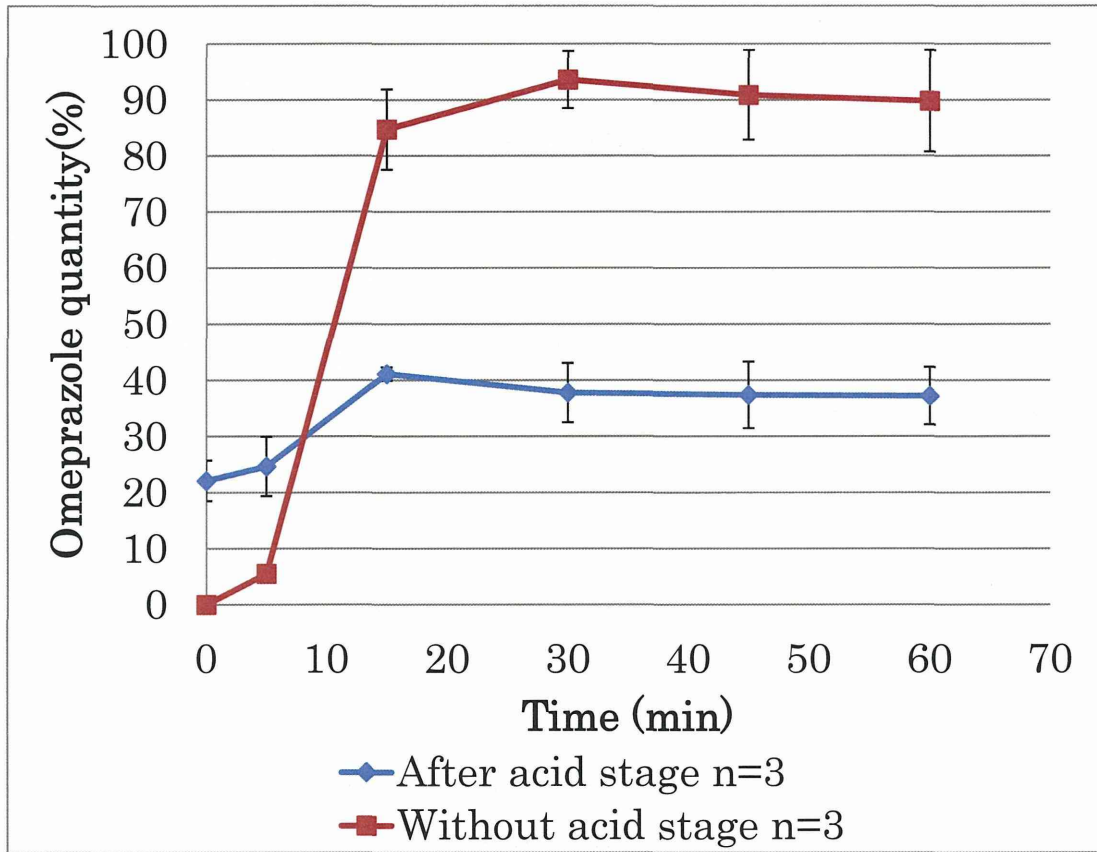


Figure 5. Cipla 製サンプル溶出プロファイル

Figure 5-1. 13-005-OME-CIP-100-1 (個人輸入)

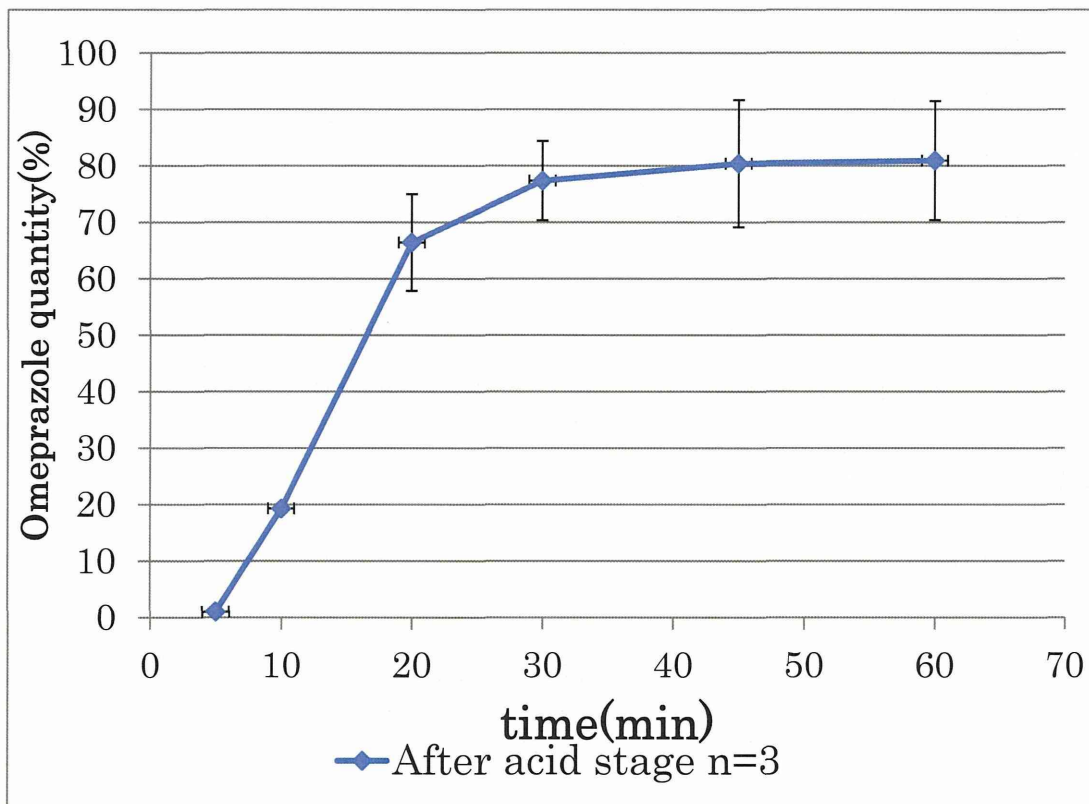


Figure 5-2. B-110 (Myanmar 2014)

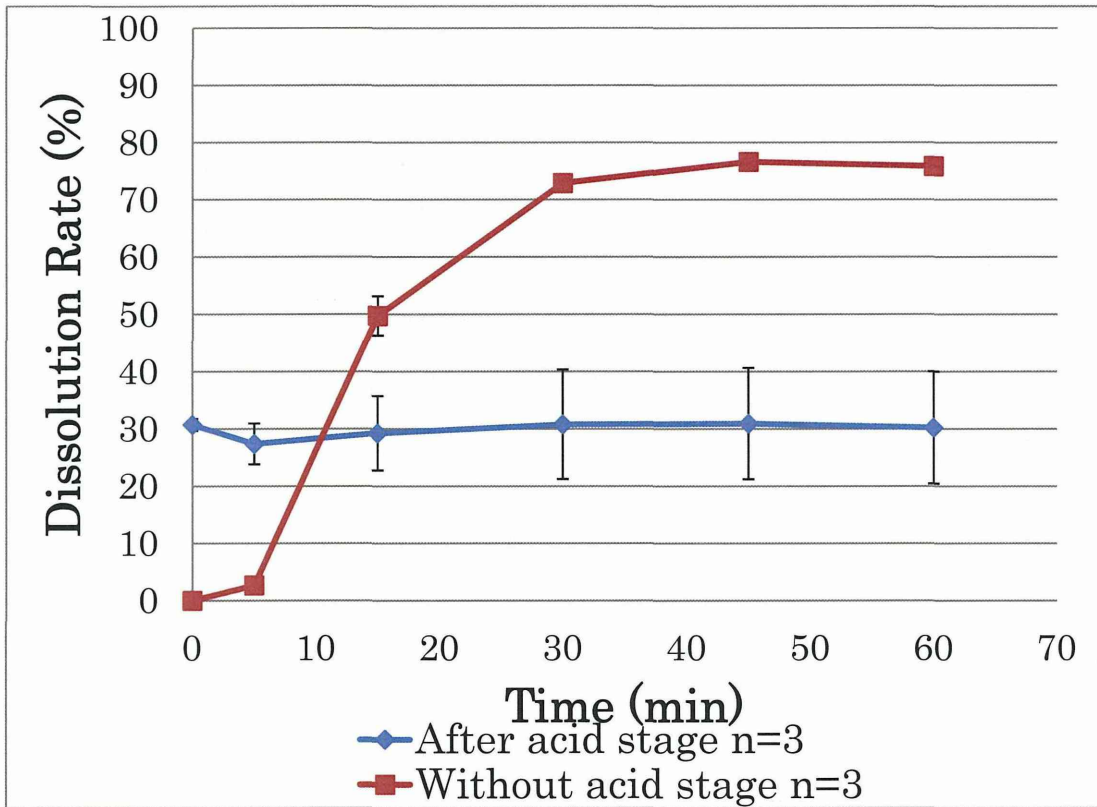


Figure 5-3. A144 (Cambodia 2010)

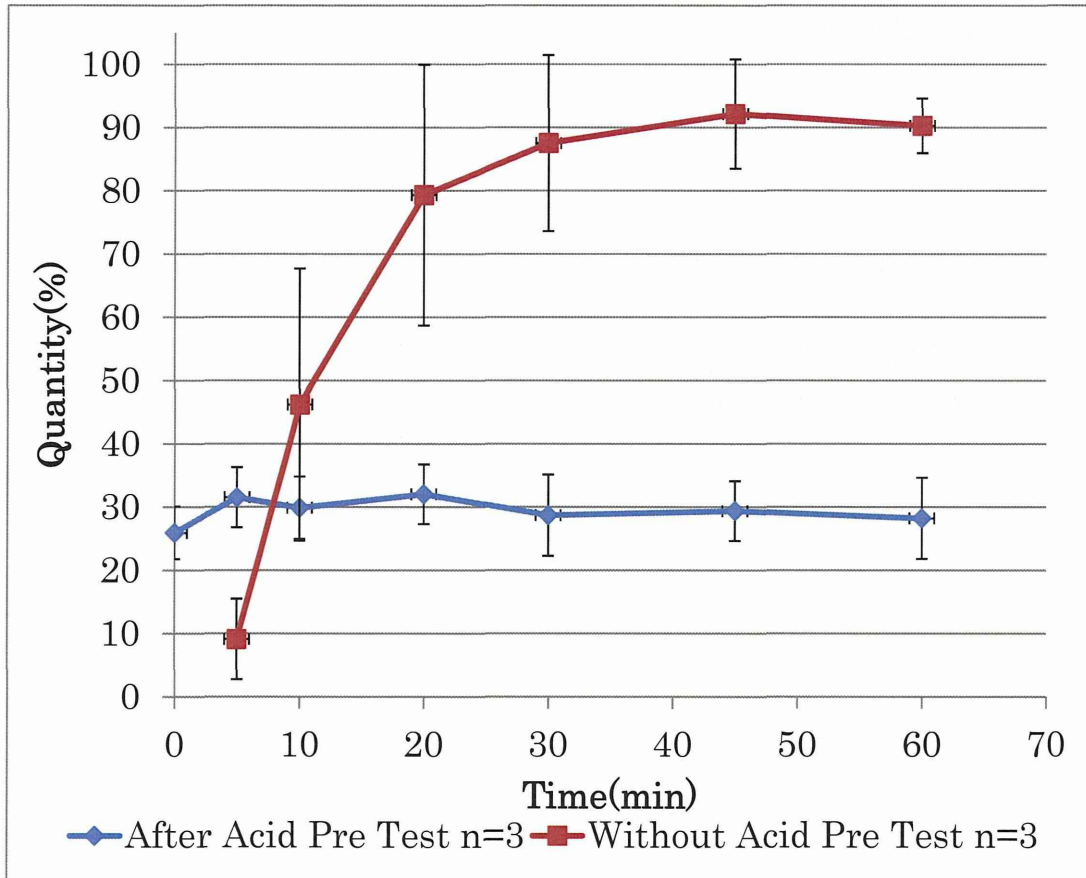


Figure 6-1. Cipla 製の個人輸入サンプルの酸性条件における HPLC ピーク (13-005-OME-CIP-100-1 : 溶出試験適合)

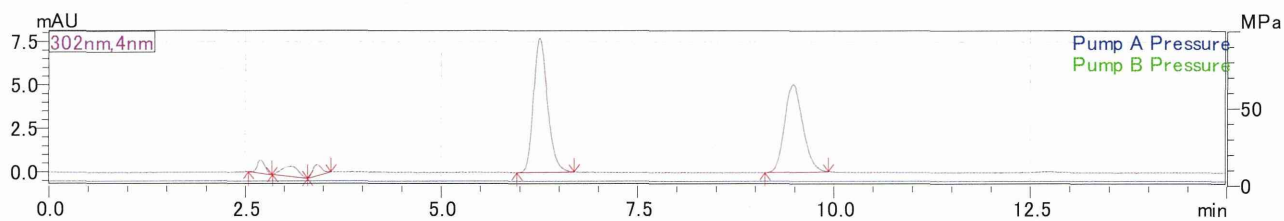


Figure 6-2. Cipla 製のカンボジア流通サンプルの酸性溶出試験終了時 (45 min) における HPLC ピーク (B-067 : 溶出試験不適合)

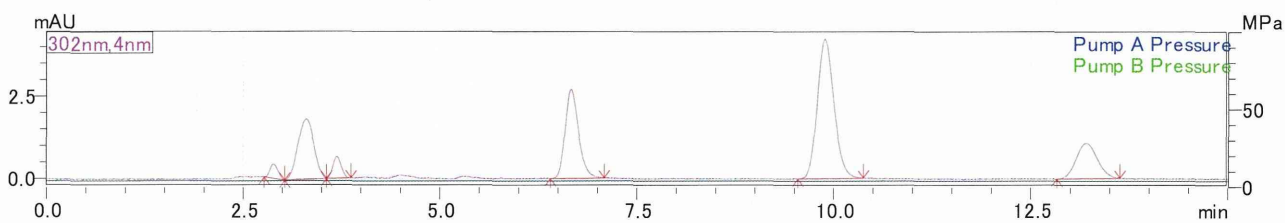


Figure 6-3. Cipla 製のミャンマー流通サンプルの酸性溶出試験終了時 (45 min) における HPLC ピーク (B-110 : 溶出試験不適合)

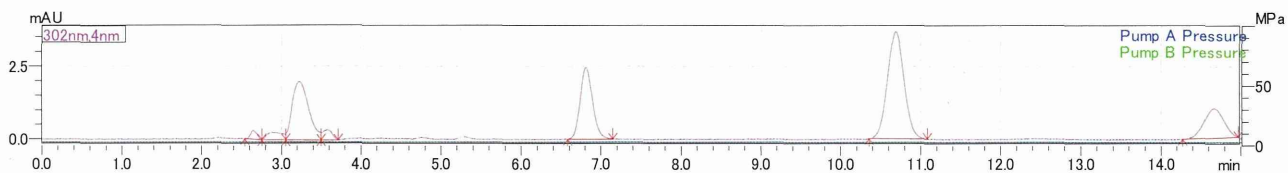




Figure 7-1. Dr.Reddy's 製ミャンマー流通 溶出試験適合サンプル (A-001) の HPLC ピーク

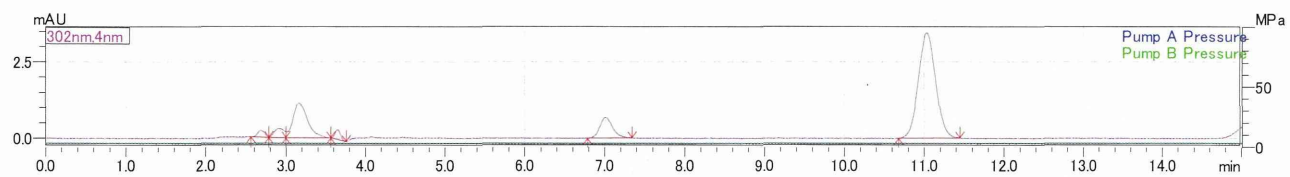


Figure 7-2. Dr.Reddy's 製 ミャンマー流通酸性溶出試験不適合サンプル (B-008) の HPLC ピーク

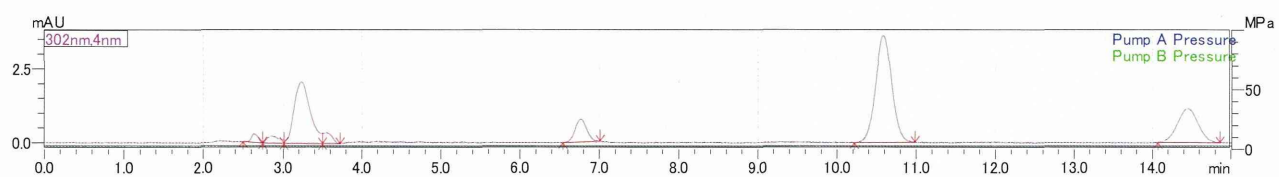


Figure 7-3. Dr.Reddy's 製個人輸入サンプル (13-002-OME-DRR-15-5) の HPLC ピーク

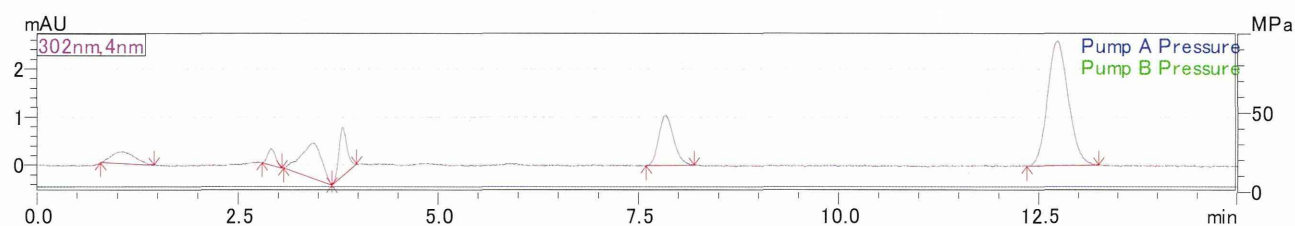


Figure 8. 赤外分光スペクトル

Figure 8-1. 13-002-OME-DRR-15-5 (個人輸入)

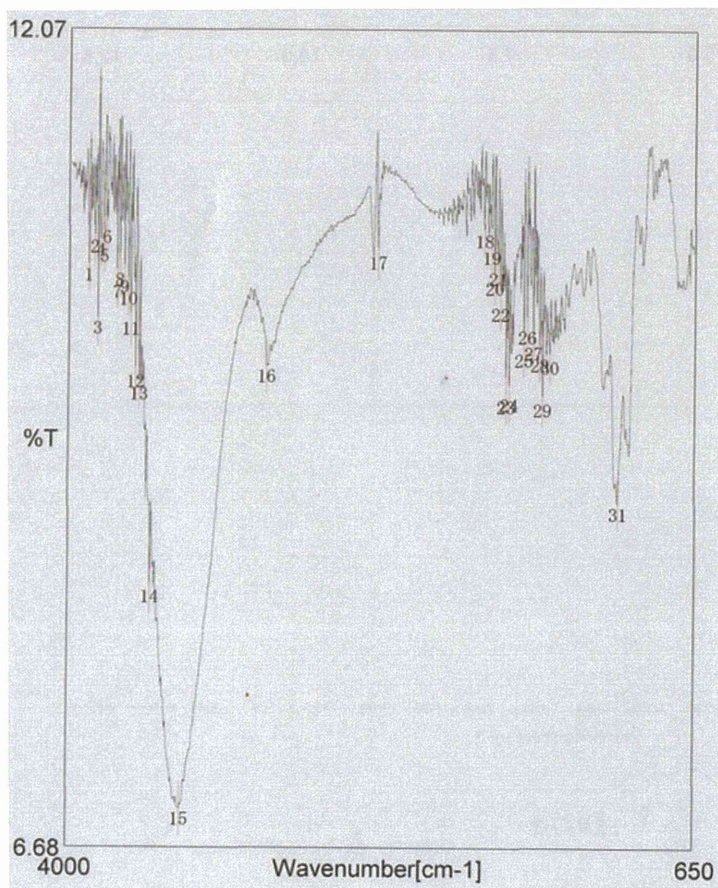
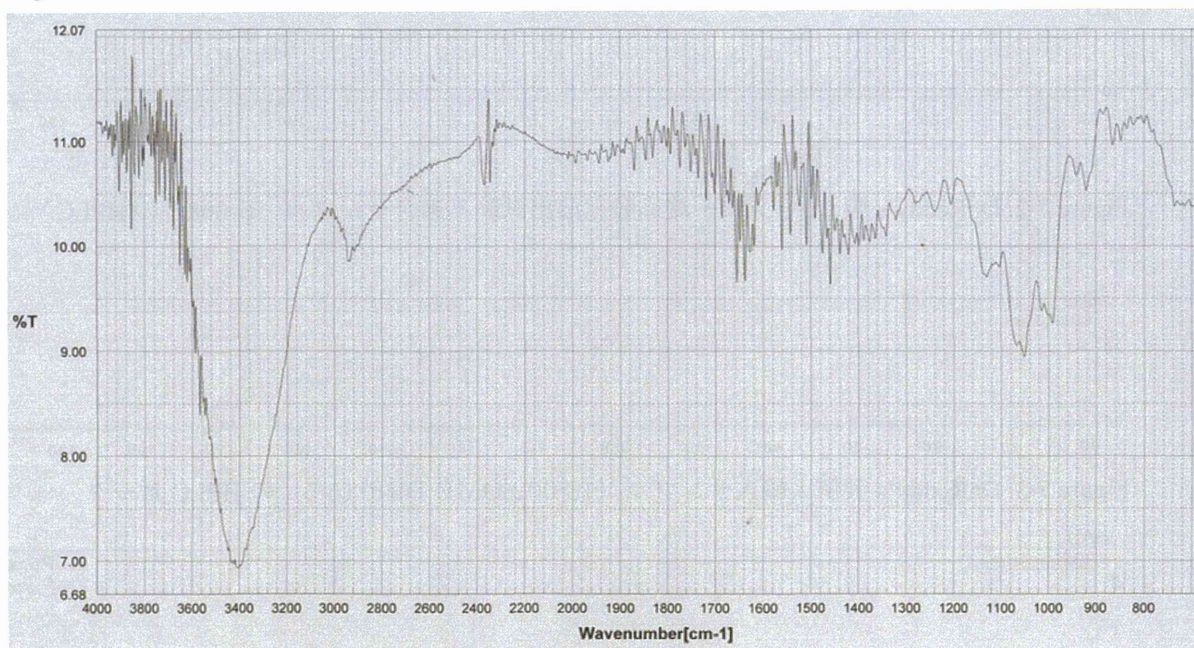


Figure 8-2. PA-005 (Myanmar 2014)

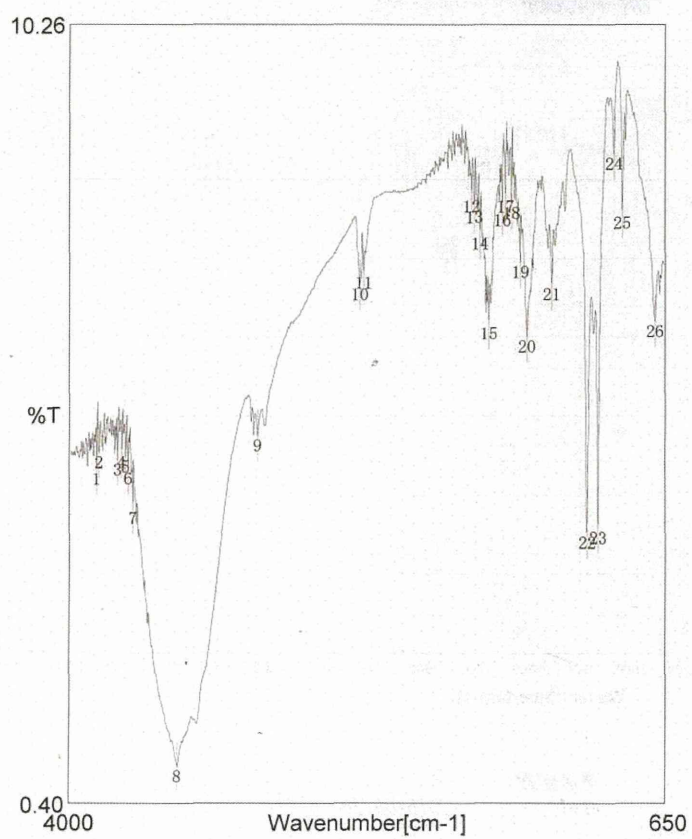
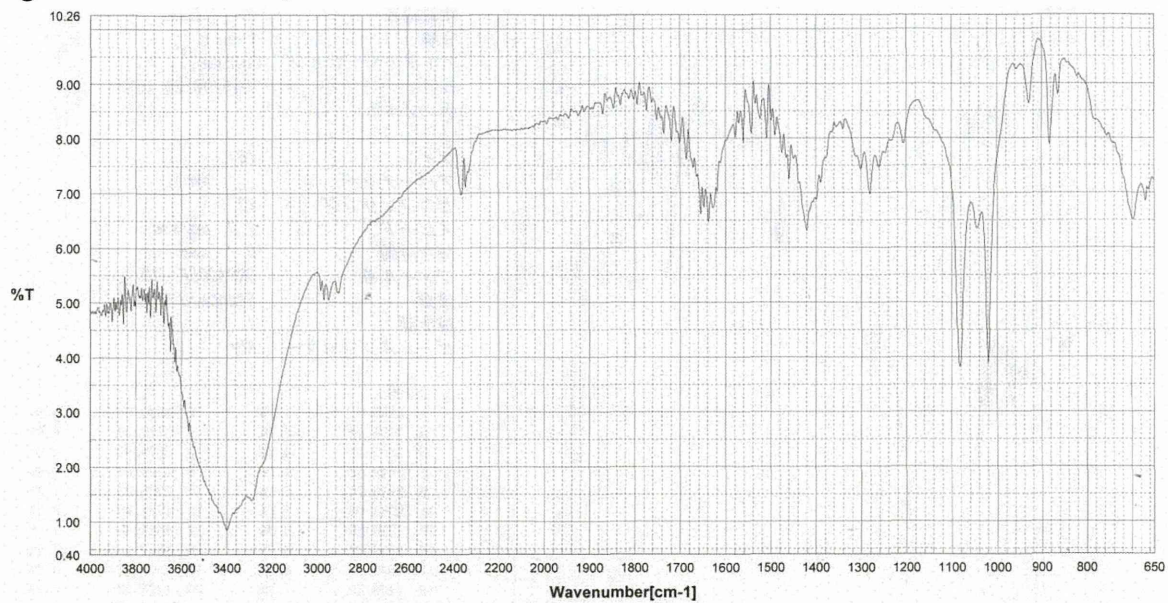


Figure 8-3. 13-005-OME-CIP-100-1 (個人輸入)

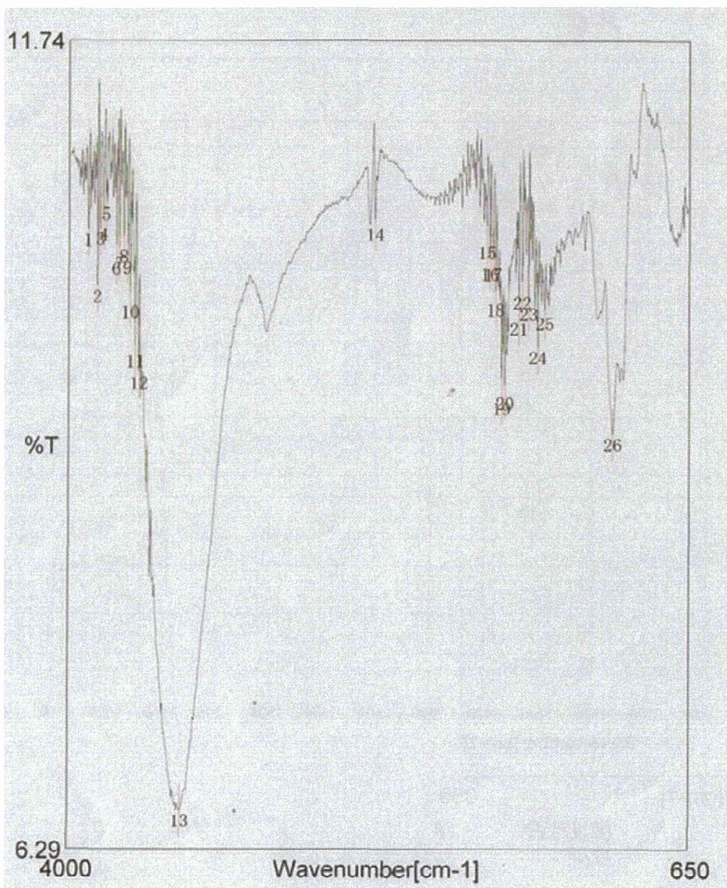
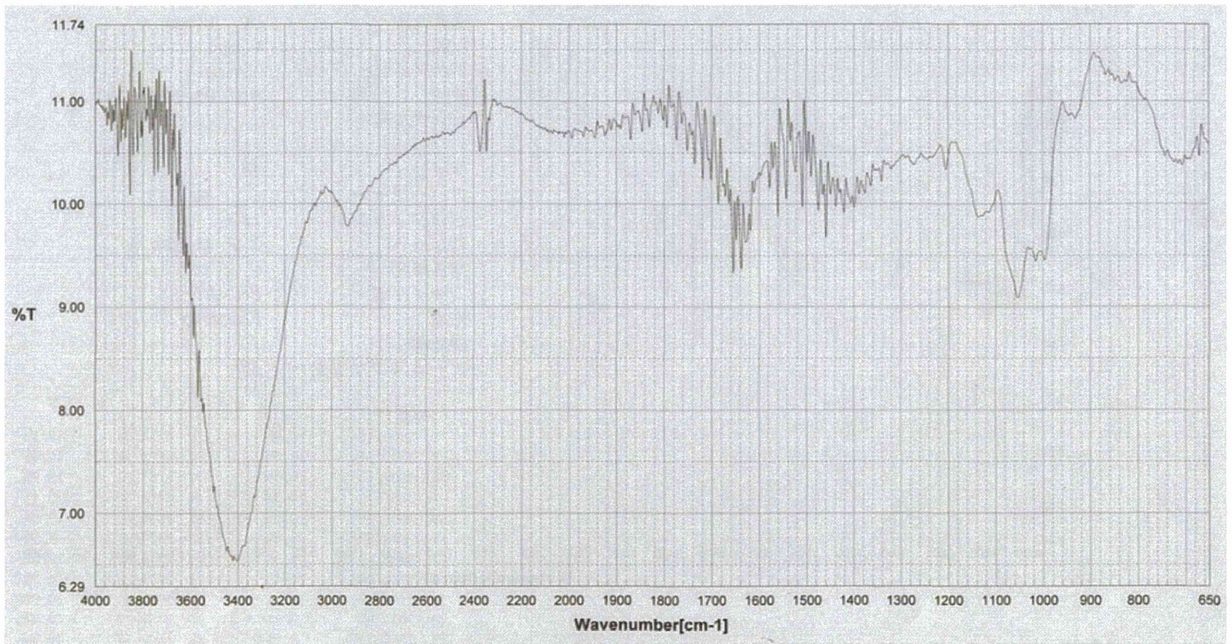


Figure 8-4. B-067 (Cambodia 2010)

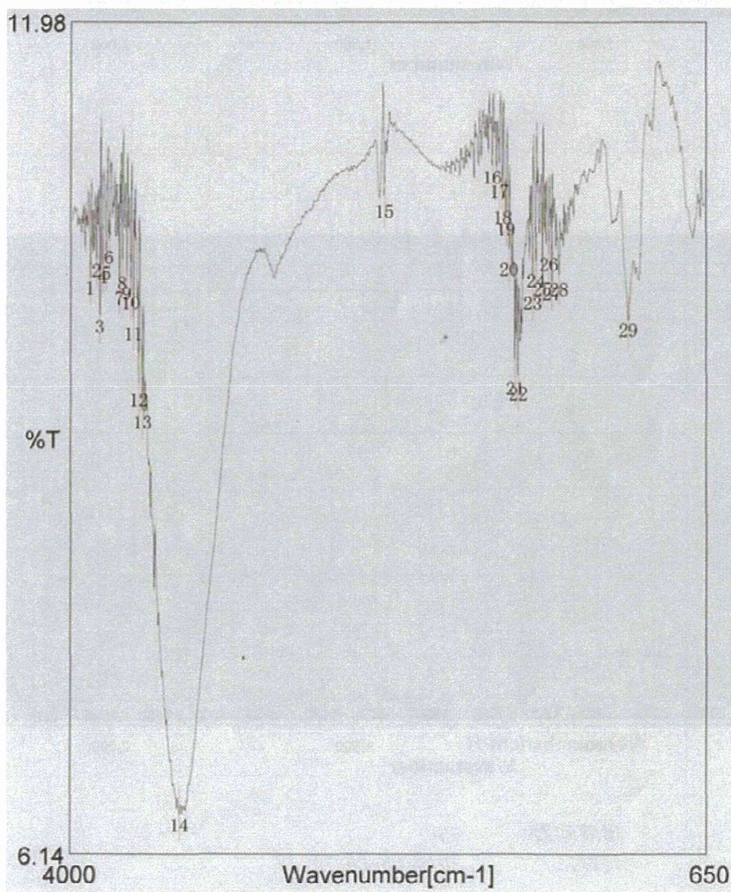
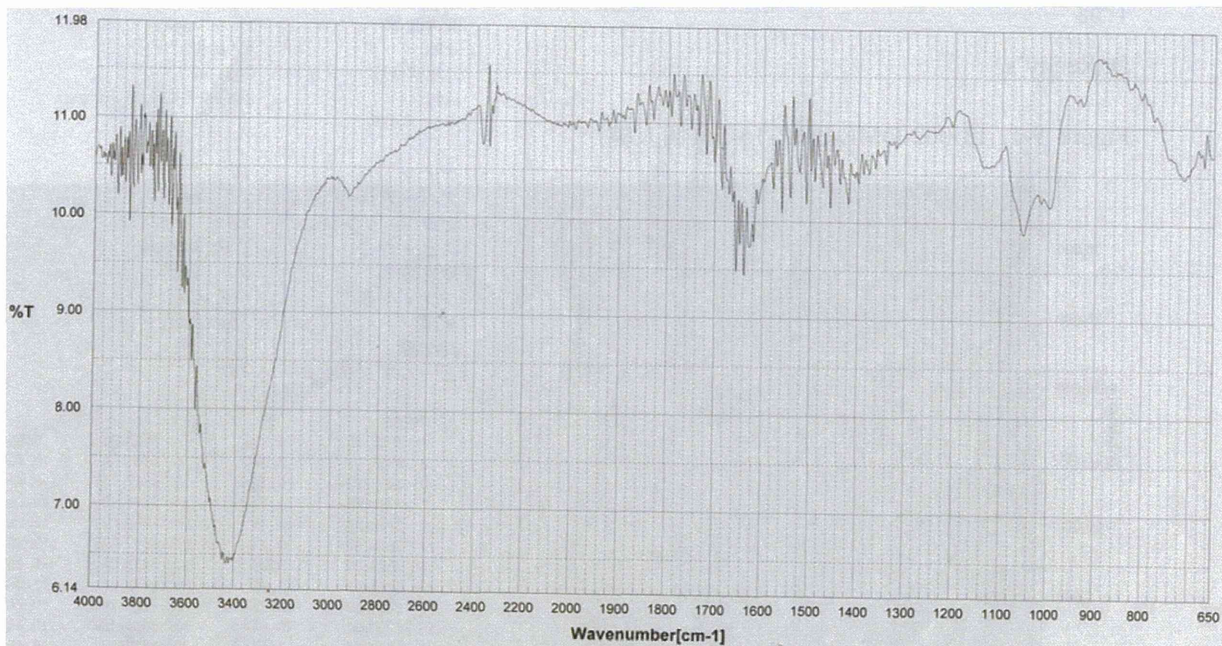


Figure 9. ラマン散乱スペクトル

Dr.Reddy's

Figure 9-1. 13-002-OME-DRR-15-5 (個人輸)

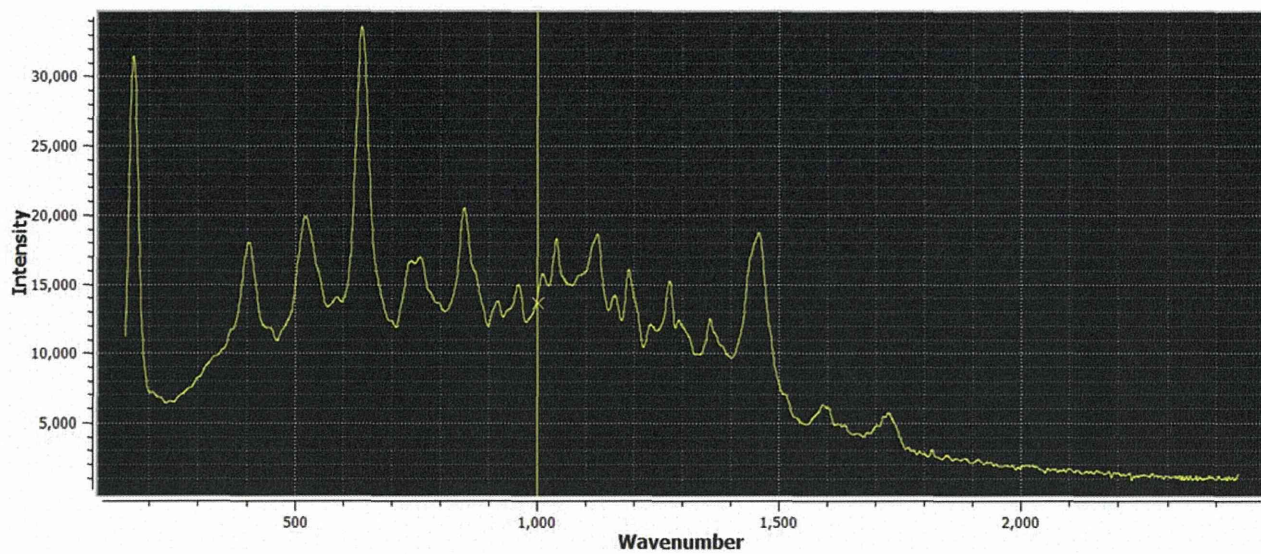


Figure 9-2. PA-005 (Myanmar 2014)

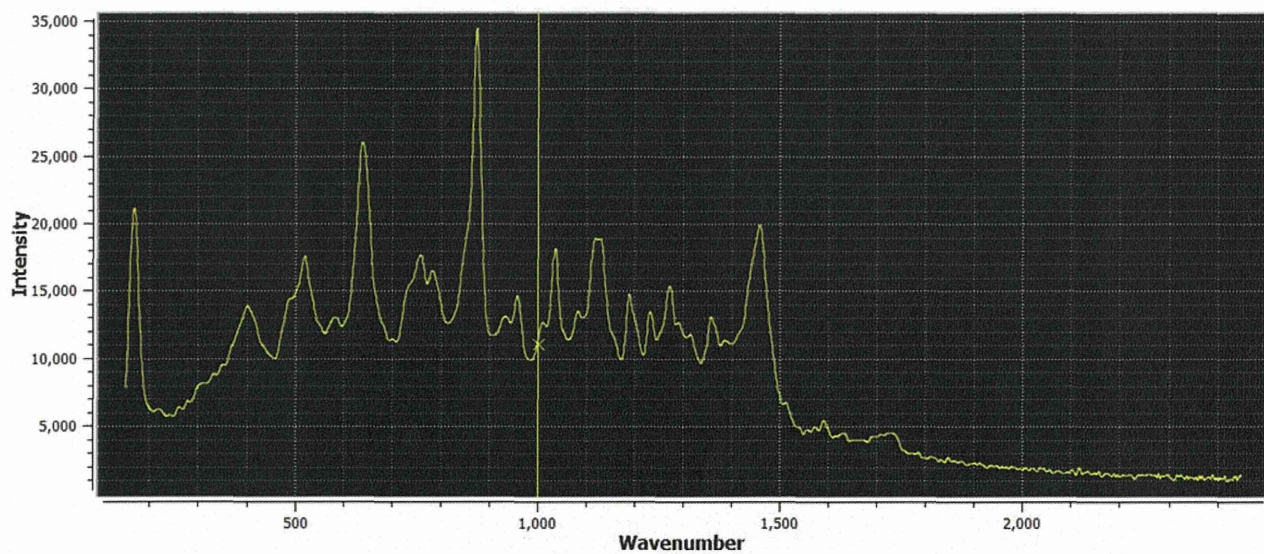
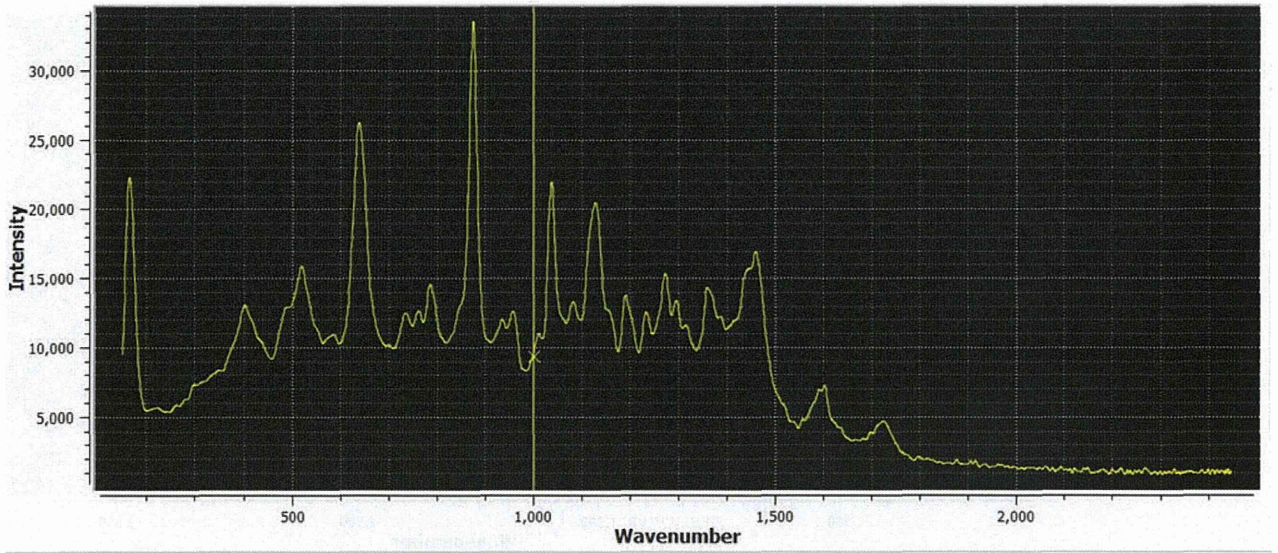


Figure 9-3. B-125 (Cambodia 2010)



CIPLA

Figure 9-4. 13-005-OME-CIP-100-1 (個人輸入)

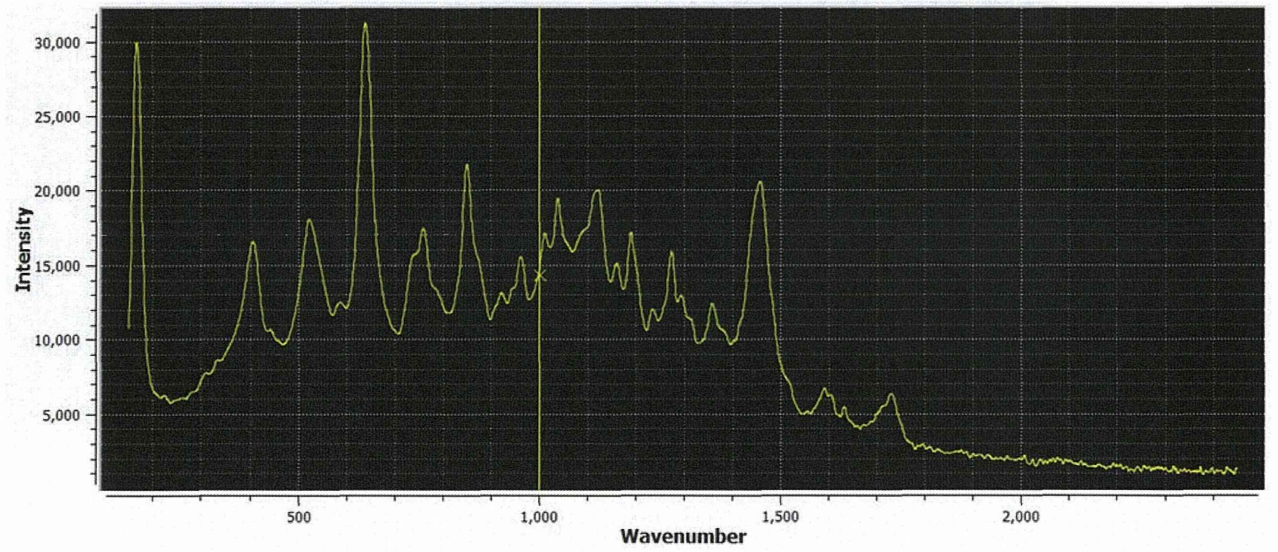


Figure 9-5. B-110 (Myanmar 2014)

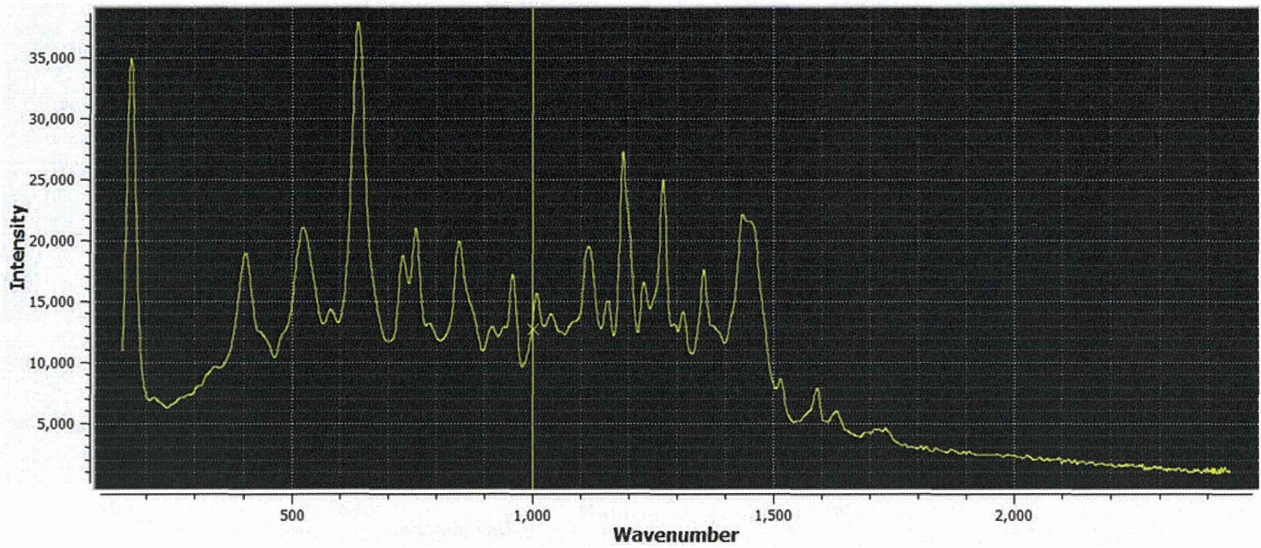


Figure 9-6. B-067 (Cambodia 2010)

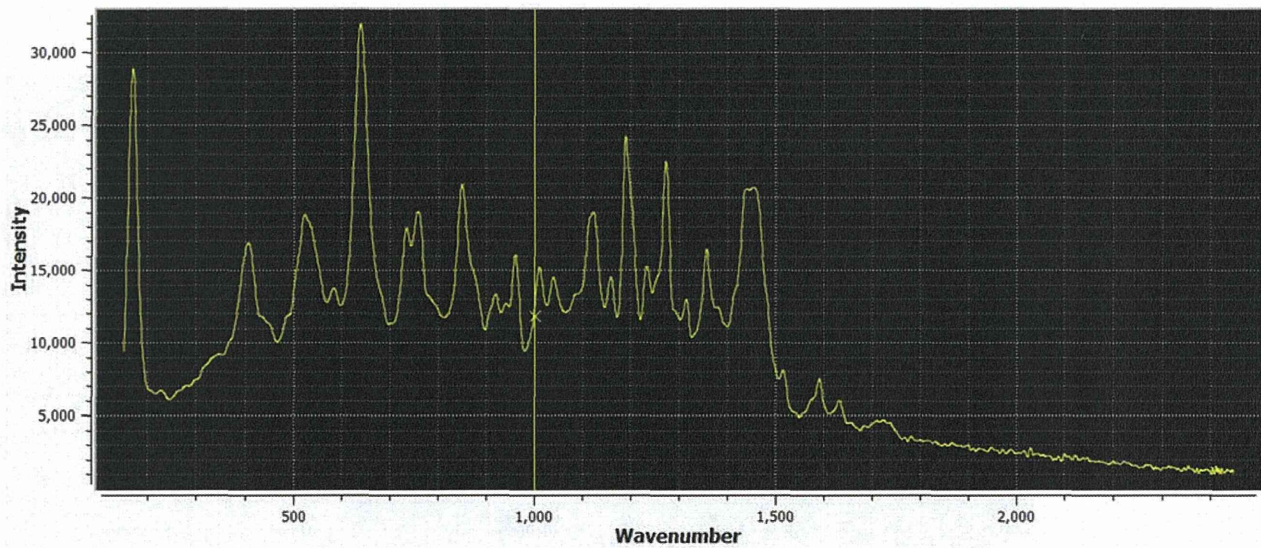




Figure 10. Dr.Reddy's 製ラマンスペクトル比較

Figure 10-1. B-054 (Myanmar, 黒字) vs 13-002-OME-DRR-15-5 (個人輸入, 赤字): 類似率 62%

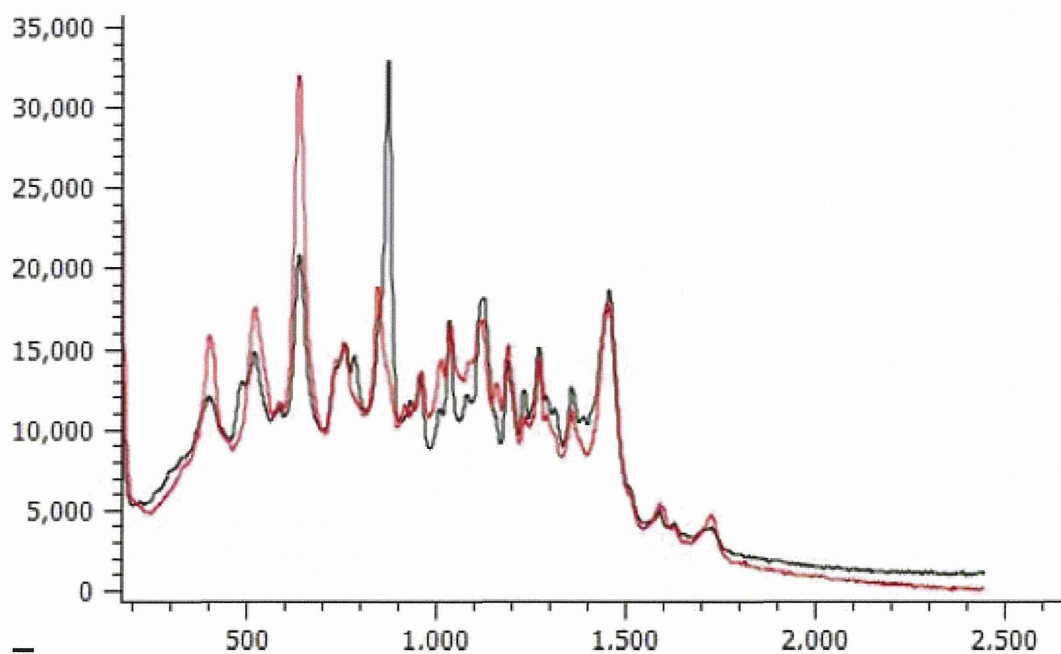


Figure 10-2. 13-002-OME-DRR-15-5 (個人輸入, 黒字) vs B-125 (Cambodia, 赤字): 類似率 68%

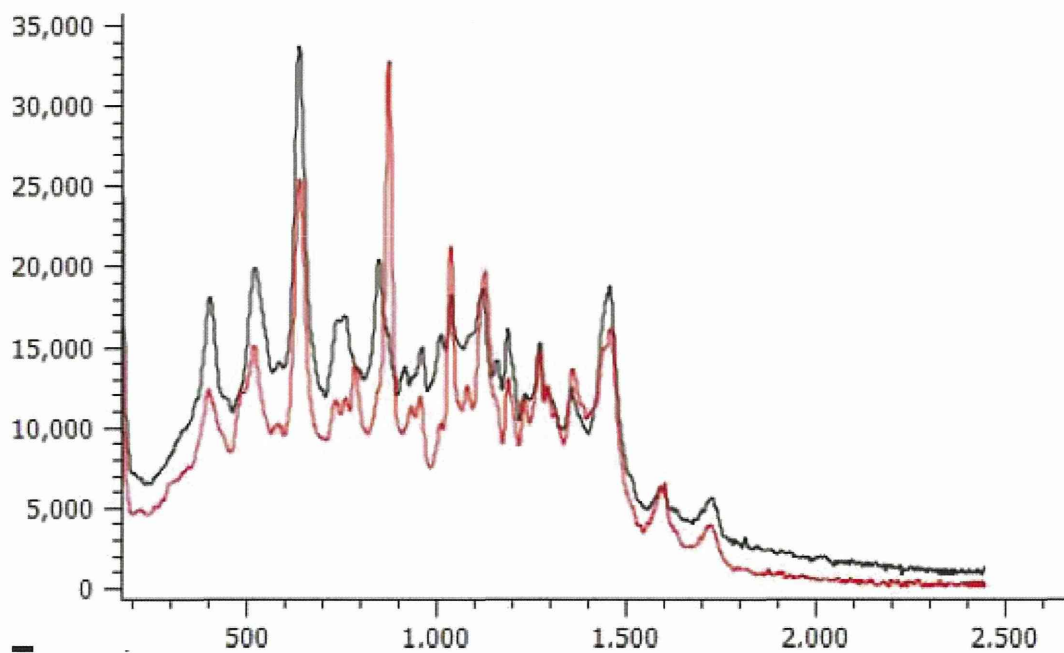


Figure 10-3. B-054 (Myanmar, 黒字) vs B-125 (Cambodia, 赤字) : 類似率 94%

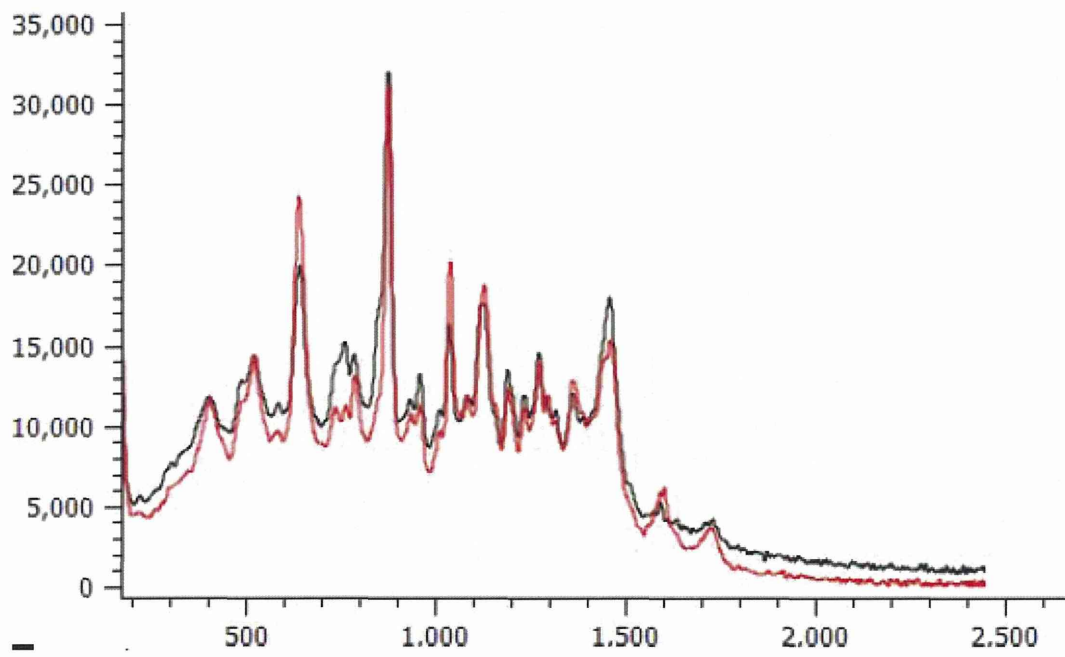


Figure 11. CIPLA 製ラマンスペクトル比較

11-1. B-110 (Myanmar, 黒字) vs 13-005-OME-CIP-100-1 (個人輸入, 赤字): 類似率 94%

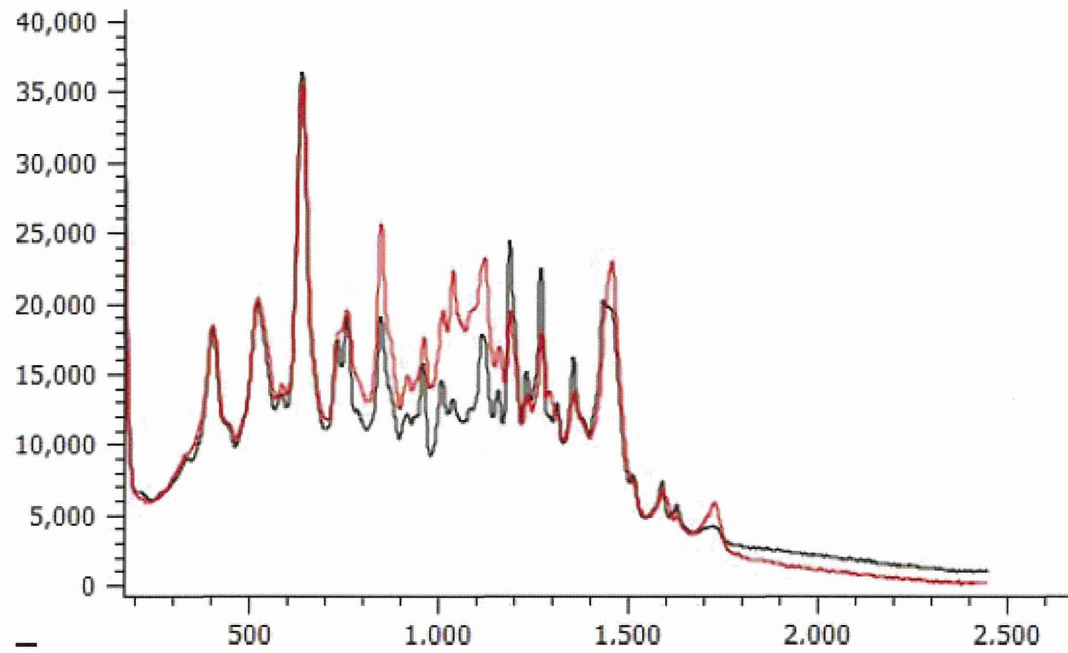


Figure 11-2. 13-005-OME-CIP-100-1 (個人輸入, 黒字) vs B-067 (Cambodia, 赤字): 類似率 92%

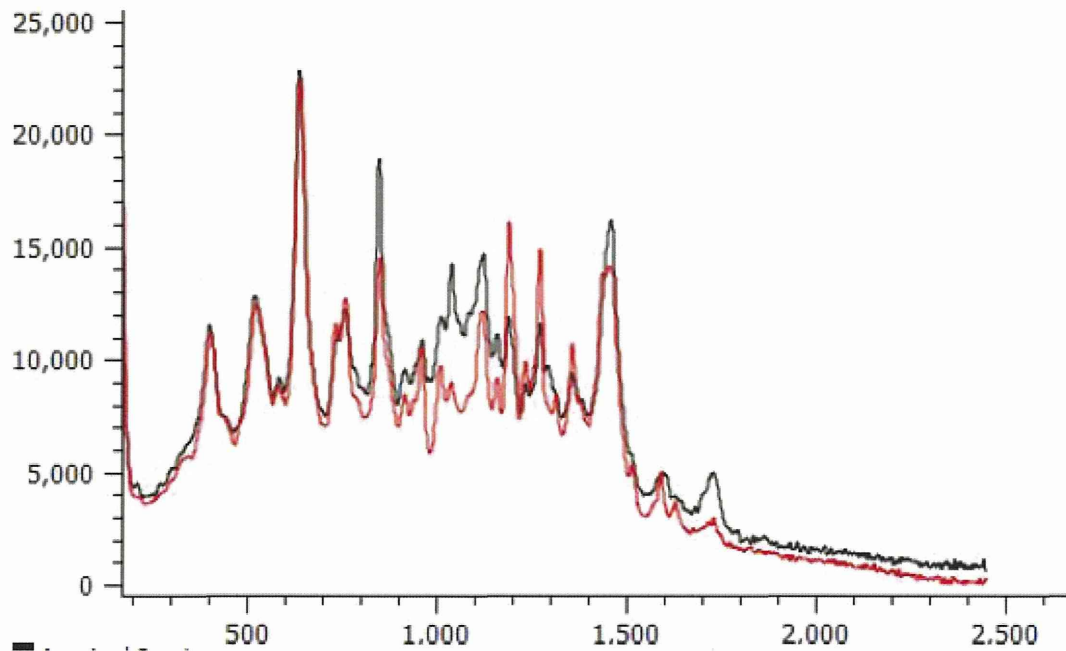


Figure 11-3. B-110 (Myanmar) vs B-067 (Cambodia, 赤字) : 類似率 98%

