

Original Article

Sarcopenia is a poor prognostic factor following hepatic resection in patients aged 70 years and older with hepatocellular carcinoma

Norifumi Harimoto, Tomoharu Yoshizumi, Masahiro Shimokawa, Kazuhito Sakata, Kouichi Kimura, Shinji Itoh, Toru Ikegami, Tetsuo Ikeda, Ken Shirabe and Yoshihiko Maehara

Department of Surgery and Science, Graduate School of Medical Sciences, Kyushu University, Fukuoka, Japan

Aim: The present study investigated the effect of sarcopenia on short- and long-term surgical outcomes and identified potential prognostic factors for hepatocellular carcinoma (HCC) following hepatectomy among patients 70 years of age and older.

Methods: Patient data were retrospectively collected for 296 consecutive patients who underwent hepatectomy for HCC with curative intent. Patients were assigned to two groups according to age (younger than 70 years, and 70 years and older), and the presence of sarcopenia. The clinicopathological, surgical outcome, and long-term survival data were analyzed.

Results: Sarcopenia was present in 112 of 296 (37.8%) patients with HCC, and 35% of patients aged 70 years and older. Elderly patients had significantly lower serum albumin levels, prognostic nutrition index, percentage of liver cirrhosis, and histological

intrahepatic metastasis compared with patients younger than 70 years. Overall survival and disease-free survival rates in patients with sarcopenia correlated with significantly poor prognosis in the group aged 70 years and older. Multivariate analysis revealed that sarcopenia was predictive of an unfavorable prognosis.

Conclusion: This retrospective analysis revealed that sarcopenia was predictive of worse overall survival and recurrence-free survival after hepatectomy in patients 70 years of age and older with HCC.

Key words: elderly, hepatectomy, hepatocellular carcinoma, prognosis, sarcopenia

INTRODUCTION

THE WORLD'S POPULATION is rapidly ageing. Between 2000 and 2050, the proportion of the world's population aged over 60 years will double from approximately 11% to 22%¹ and the age of patients with some malignancies has also been increasing. In such a society, abuse of elderly people is an important public health problem. In 1989, Irwin Rosenberg² proposed the term "sarcopenia" to describe the age-related decline of muscle mass. Sarcopenia is a syndrome characterized by the progressive and generalized loss of skeletal muscle mass and strength, with a risk of adverse outcomes such as physical

disability, poor quality of life, and death.³⁻⁵ It is the result of multiple physiologic derangements, ultimately resulting in an insidious functional decline. Skeletal muscle mass is highly important in immune function, glucose disposal, protein synthesis, and mobility; therefore, decreases in skeletal muscle can result in a plethora of physiologic impairments.⁶ Traditional measures of nutritional assessment, such as body mass index and serum albumin, do not accurately predict outcome in the injured elderly. In the future aging society, patients with sarcopenia will be a social issue.

Sarcopenia represents not only a potential new predictor for mortality and discharge disposition, but was also identified as a poor prognostic factor for pancreatic cancer, colorectal liver metastases, melanoma, liver cirrhosis, and liver transplantation.⁷⁻¹² We previously published that sarcopenia was predictive of a worse OS even when adjusted for other known predictors in 186 patients with HCC after hepatectomy.¹³ Because of advances in the diagnosis and management of HCC, significant improvements in OS and DFS rates for HCC after hepatectomy have been

Correspondence: Dr Tomoharu Yoshizumi, Department of Surgery and Science, Graduate School of Medical Sciences, Kyushu University, 3-1-1 Maidashi, Higashi-ku, Fukuoka 812-8582, Japan. Email: yosizumi@surg2.med.kyushu-u.ac.jp

Conflict of interest: The authors have no conflict of interest.
Received 10 September 2015; revision 22 October 2015; accepted 10 February 2016.

achieved. In particular, sufficient evidence exists that hepatectomy can be safely undertaken in selected elderly patients.^{14–16} However, even when curative resection is carried out, a considerable number of patients develop intrahepatic or extrahepatic recurrence postoperatively. The prognostic assessment of patients with HCC after hepatectomy and recurrence in this population are important clinical issues.^{17–19} Both tumor- and host-related factors are related to the clinical outcome, but it is difficult to evaluate the general condition of patients excluding liver function before hepatectomy, especially in elderly patients. Conventional methods, such as the Child–Pugh classification, were the first systematic approaches used to determine the severity of cirrhosis and select the patients who could tolerate hepatic resection; however, these methods do not reflect the patient's general condition. Given this background, predicting the clinical and prognostic outcome of HCC patients in elderly is of considerable importance.

In this study, a retrospective study was carried out at our institution to investigate the outcome of elderly patients with sarcopenia who underwent hepatic resection. The outcome of these patients was compared to that of patients without sarcopenia undergoing hepatic resection during the same period.

METHODS

Patient characteristics

ALL PATIENTS WHO underwent curative hepatic resection as initial treatment at the Department of Surgery II, Kyushu University Hospital (Fukuoka, Japan) from January 2004 to December 2013 were enrolled in this study. Curative resection was defined as complete macroscopic removal of the tumor. All patients underwent preoperative CT in Kyushu University Hospital. A transverse CT image of the third lumbar vertebrae (L3) in the inferior direction was assessed from each scan. Skeletal muscle was identified and quantified by Hounsfield unit thresholds of -29 to $+150$ according to a previous report.^{8,13} According to the Hounsfield unit scale, the radiodensity of water is 0 U and that of air is -1000 U. Multiple muscles were identified, including the psoas, erector spinae, quadratus lumborum, transversus abdominis, external and internal obliques, and rectus abdominis as a previous report. The CT measurement was calibrated with water and air at fixed intervals. The cross-sectional areas (cm^2) of skeletal muscles in the L3 region were measured by manual outlining on the CT images and checked by the radiologist. The formulae to calculate skeletal muscle area were $126.9 \times \text{BSA} - 66.2$ in men and $125.6 \times \text{BSA} - 81.1$ in women according to a

previous report by Yoshizumi *et al.*²⁰ Using these formulae, sarcopenia in Japanese patients was defined so that the actual skeletal muscle area was 85% smaller than the calculated skeletal muscle area. The clinicopathological backgrounds and rates of OS and RFS were compared between the two groups, which were divided according to the presence of sarcopenia.

The prognostic factors were examined with respect to OS and RFS on the basis of the following variables: sarcopenia (absence vs presence); skeletal muscle mass; age; gender (male vs female); body mass index; HBs Ag (HBs Ag[+] vs HBs Ag[-]); HCV antibody (HCV[+] vs HCV[-]); serum albumin level; serum total bilirubin level; serum aspartate aminotransferase level; platelet number; ICGR15; C reactive protein; PNI; Child–Pugh classification (A vs B); histological liver cirrhosis (normal liver + chronic hepatitis vs liver fibrosis and liver cirrhosis); tumor size; tumor number (solitary vs multiple); TNM stage according to the Liver Cancer Study Group in Japan²¹ (I + II vs III + IV); tumor differentiation (well differentiated + moderately differentiated vs poorly differentiated); microvascular invasion (absence vs presence); im (absence vs presence); serum α -fetoprotein level; des- γ -carboxy prothrombin level; operative procedure (anatomical vs non-anatomical); operative time; estimated blood loss; and postoperative complication (absence vs presence). The patients with diabetes were defined as the use of oral hypoglycemic agent or insulin. Postoperative complications within 1 month after hepatectomy, included liver failure, encephalopathy, gastrointestinal bleeding, i.p. abscess, abdominal hemorrhage, bile leakage, pleural effusion, intractable ascites, and wound infection. The more severe Clavien–Dindo grade III complications,²² which required surgical interventions, were defined as the presence of postoperative complication.

Surgical procedures

The details of surgical techniques and patient selection criteria have been reported previously.¹⁹ Our criteria for hepatic resection were that ascites was not detected or were controllable by diuretics, serum total bilirubin level was <2.0 mg/mL, and the ICGR15 value was less than 40%. These included a J-shaped incision for routine abdominal access, a slow and gentle hepatic dissection using an ultrasonic dissector with a coagulator (CUSA Excel; Integra, Plainsboro, NJ, USA), with systematic ligation of all sizeable vessels, and close ultrasonographic guidance along the transection line. Cholecystectomy was carried out in all patients if the gallbladder was present. An intraoperative bile leakage test was routinely undertaken to identify bile leakage. With this procedure, we recognized small bile leakage sites on the cut liver surface and could repair them by Z-suturing using G-OPDSII (Johnson & Johnson, Tokyo,

Japan). Intraoperative vascular control was achieved by the Pringle maneuver.²⁴

Follow-up strategy and recurrence pattern

After discharge, all patients were examined for recurrence by ultrasonography and tumor markers, such as α -fetoprotein and des- γ -carboxy prothrombin, every month and by CT every 6 months. When recurrence was

suspected, additional examination such as hepatic angiography were carried out. We treated recurrent HCC by repeat hepatectomy, ablation therapy, and lipiodolization, according to a strategy described previously.²⁵

Histological study

All of the resected specimens were cut into serial 5–10-mm-thick slices and fixed in 10% formalin. After

Table 1 Comparison of clinicopathological factors between two groups of patients with hepatocellular carcinoma (HCC), classified by age

Variables	<70 years (n = 157)	≥70 years (n = 139)	P-value
Male / female	123/34	98/41	0.122
HBV	20 (18.0%)	8 (10.1%)	0.243
HCV	65 (58.6%)	51 (68.0%)	0.250
Skeletal muscle mass, cm ² /m ²	74.4 ± 11.9	70.9 ± 12.8	0.018
Sarcopenia (+)	55 (35.0%)	57 (41.0%)	0.337
Body mass index, kg/m ²	22.8 ± 3.1	23.1 ± 3.3	0.356
Diabetes mellitus	49 (31.2%)	38 (27.3%)	0.495
Albumin, g/dL	4.0 ± 0.5	3.9 ± 0.5	0.009
Total bilirubin, mg/dL	0.8 ± 0.4	0.7 ± 0.4	0.307
AST, IU/L	51 ± 36	56 ± 46	0.475
Platelet count, 10 ⁴ /μL	15.4 ± 6.4	16.3 ± 6.8	0.230
ICGR15, %	13.8 ± 7.6	14.7 ± 7.4	0.337
CRP	0.41 ± 1.2	0.41 ± 1.8	0.997
PNI	48.4 ± 6.3	46.1 ± 6.4	0.002
Child–Pugh A / B	151/6	131/8	0.190
Hepatitis grade, none / mild / severe	13/80/18	11/55/9	0.652
Liver cirrhosis, nl + ch/lf + lc	71/86	83/56	0.006
Tumor size, cm	4.0 ± 3.2	4.0 ± 2.9	0.989
Solitary / multiple	121/36	113/23	0.171
Stage, I / II / III / IV	24/83/39/11	24/73/35/7	0.884
Differentiation, well / mod / poor	10/77/24	9/50/16	0.690
mvi (+)	53 (33.7%)	48 (34.5%)	0.889
im (+)	30 (19.1%)	12 (8.6%)	0.010
AFP, ng/mL	5569 ± 47 209	74 838 ± 15 567	0.529
DCP, mAU/L	3831 ± 14 797	3685 ± 22 463	0.947
Anatomical / non-anatomical	76/35	47/28	0.508
Operative time, min	368 ± 114	355 ± 154	0.512
Estimated blood loss, g	648 ± 528	885 ± 2887	0.398
Blood transfusion (+)	12 (10.8%)	10 (13.3%)	0.649
Postoperative complications	29 (18.4%)	22 (15.8%)	0.613
Postoperative hospital stay, days	18 ± 18	17 ± 15	0.501

Data are expressed as means ± standard deviations or number of patients (percentage) as appropriate. AFP, α -fetoprotein; AST, aspartate aminotransferase; ch, chronic hepatitis; CRP, C reactive protein; DCP, des- γ -carboxy prothrombin; HBV, hepatitis B antigen-positive; HCV, hepatitis C antibody-positive; ICGR15, indocyanine green dye retention test at 15 min; im, intrahepatic metastasis; lc, liver cirrhosis; lf, liver fibrosis; mod, moderately differentiated HCC; mvi, microvascular invasion; nl, normal liver; poor, poorly differentiated HCC; PNI, prognostic nutrition index; Stage, TNM stage defined by the Liver Cancer Study Group of Japan; well, well differentiated HCC.

macroscopic examination, the slice with the greatest dimensions was trimmed for embedding in paraffin and cut into 4- μ m microscopic sections. The sections were stained with hematoxylin–eosin. Tumor differentiation, microvascular invasion, im, and histological liver cirrhosis were examined by the pathologist according to the guidelines of the Liver Cancer Study Group in Japan.

Statistical analysis

The associations of continuous and categorical variables with the relevant outcome variables were assessed using Student's *t*-test and the χ^2 -test, respectively. The survival curves and RFS after hepatectomy of the two groups were analyzed by the Kaplan–Meier method and compared with the log-rank test. To identify the prognostic factors after hepatectomy, all variables over $P < 0.1$ in univariate

analysis were included in the multivariate Cox proportional model in the analyses of both OS and RFS.

All analyses were carried out with Statview 5.0 software (Abacus Concepts Inc., Berkeley, CA, USA). *P*-values less than 0.05 were considered statistically significant.

RESULTS

IN TOTAL, SARCOPIENIA was identified in 112 patients (37.8%): 83 men and 29 women among the 296 patients with HCC. Sarcopenia was identified in 35% of patients aged 70 years or older. The clinicopathological characteristics of all patients are shown in Table 1. Skeletal muscle in patients aged 70 years and older was significantly smaller than in patients younger than 70 years,

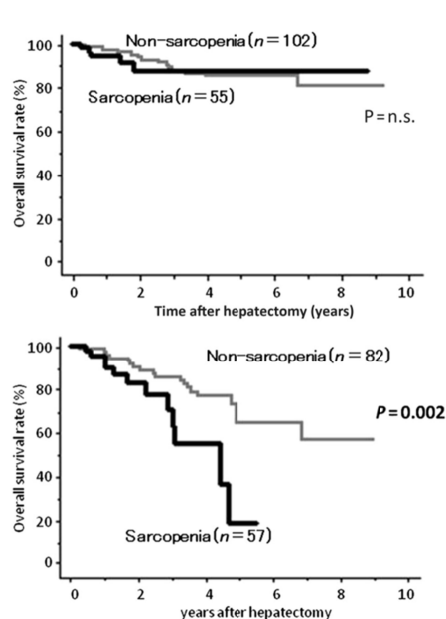


Figure 1 Overall survival curves in patients with sarcopenia or without sarcopenia in patients younger than 70 years (a) and 70 years and older (b). Overall survival rates in patients with sarcopenia indicated significantly poor prognosis in the group aged 70 years and older. n.s., Not significant.

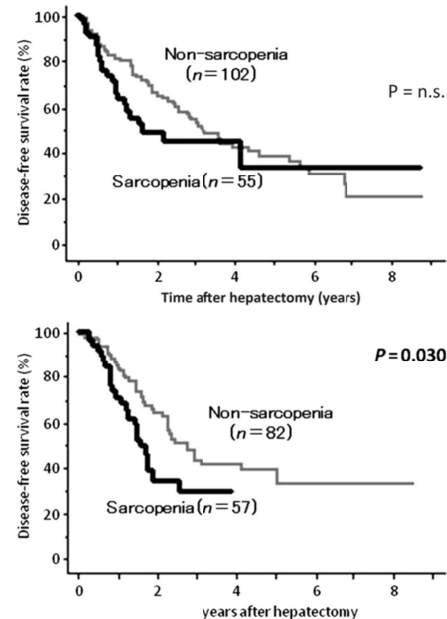


Figure 2 Disease-free survival rates in patients younger than 70 years (a) and aged 70 years and older (b) with or without sarcopenia. Disease-free survival rates in patients with sarcopenia correlated with significantly poor prognosis in the older age group. n.s., Not significant.

but the number with sarcopenia was not different between the two groups. Elderly patients had significantly lower serum albumin levels, lower level of PNI, percentage of liver cirrhosis, and histological im compared with the younger patient group. There were no significant differences regarding other host-related factors, tumor-related factors, or surgical outcome between the two groups.

Figure 1 shows OS curves in patients with or without sarcopenia. Overall survival curves are shown in patients

younger than 70 years (Fig. 1a) and those 70 years of age and older (Fig. 1b). Overall survival rates in patients with sarcopenia were significantly correlated with poor prognosis in patients aged ≥ 70 years ($P=0.002$). Figure 2 shows DFS rates in patients with or without sarcopenia in patients younger than 70 years (Fig. 2a) and those aged ≥ 70 years (Fig. 2b). Disease-free survival rates in patients with sarcopenia also significantly associated with poor prognosis in the older patient group ($P=0.030$).

Table 2 Cox proportional hazard model of the all clinical characteristics on overall survival using univariable and multivariable analyses in patients 70 years of age and older

Variables	Univariable analysis		Multivariable analysis	
	Hazard ratio	P-value	Hazard ratio	P-value
Gender (male)	0.869 (0.387, 1.955)	0.7349		
HBs Ag(+)	1.692 (0.401, 7.142)	0.4738		
HCV ab(+)	1.757 (0.815, 3.787)	0.1503		
Diabetes mellitus	0.951 (0.426, 2.118)	0.9028		
Sarcopenia (+)	3.125 (1.470, 6.622)	0.0030	2.544 (1.206, 5.5865)	0.0199
Body mass index, kg/m ²	0.873 (0.780, 0.978)	0.0192		
Albumin, g/dL	0.651 (0.303, 1.403)	0.2736		
Total bilirubin, mg/dL	0.794 (0.297, 2.126)	0.5465		
AST, IU/L	0.985 (0.970, 1.001)	0.0593		
Platelet count, 10 ³ / μ L	0.982 (0.931, 1.035)	0.4965		
ICGR15, %	1.013 (0.970, 1.059)	0.5521		
CRP, mg/dL	1.155 (0.863, 1.547)	0.3318		
PNI	0.950 (0.896, 1.008)	0.0875		
Child-Pugh B	7.751 (2.597, 23.25)	0.0002	7.751 (1.439, 29.41)	0.0149
Liver cirrhosis, lf+lc	1.295 (0.653, 2.564)	0.4591		
Tumor size, cm	1.001 (0.888, 1.127)	0.9911		
Multiple tumor number	2.439 (1.157, 5.154)	0.0191	2.695 (1.205, 6.024)	0.0158
Stage (III+IV)	1.342 (0.646, 2.785)	0.4302		
Poor differentiation (+)	2.375 (1.191, 4.739)	0.0140	3.521 (1.667, 7.463)	0.0010
mvi (+)	1.639 (0.604, 2.450)	0.5826		
im (+)	1.644 (0.576, 4.695)	0.3528		
AFP, ng/mL	1.000 (1.000, 1.000)	0.3092		
DCP, mAU/L	1.000 (1.000, 1.000)	0.0638		
Operative procedures (Anatomical)	1.479 (0.739, 2.958)	0.2686		
Operative time, min	1.001 (0.998, 1.003)	0.7028		
Estimated blood loss, g	1.000 (1.000, 1.001)	0.5613		
Blood transfusion (+)	1.960 (0.843, 4.566)	0.1177		
Postoperative complications (+)	1.472 (0.638, 3.401)	0.3637		
Postoperative hospital stay, days	1.012 (0.996, 1.029)	0.1353		

Values in parentheses are 95% confidence intervals.

AFP, α -fetoprotein; AST, aspartate aminotransferase; CRP, C reactive protein; DCP, des- γ -carboxy prothrombin; HBs Ag, hepatitis B surface antigen-positive; HCV ab, hepatitis C antibody-positive; ICGR15, indocyanine green dye retention test at 15 min; im, intrahepatic metastasis; lc, liver cirrhosis; lf, liver fibrosis; mvi, microvascular invasion; PNI, prognostic nutrition index; poor differentiation, poorly differentiated hepatocellular carcinoma; Stage, TNM stage defined by the Liver Cancer Study Group of Japan.

The prognostic factors for OS and DFS in patients 70 years of age and older, according to univariate and multivariate analyses, are shown in Tables 2, 3, respectively. The significant prognostic factors for OS in the univariate analysis were presence of sarcopenia, Child–Pugh B, multiple tumor number, and poor differentiation. The significant prognostic factors for RFS in the univariate analysis were presence of sarcopenia, serum C reactive protein levels, tumor size, multiple tumor number, stage III + IV disease, presence of im, blood loss, and blood transfusion. Multivariate analysis identified four poor prognostic

factors (sarcopenia, multiple tumor number, Child–Pugh B, and poor differentiation) that influenced OS, and three poor prognostic factors (sarcopenia, stage III + IV disease, and blood transfusion) that influenced DFS.

Table 4 shows the comparison of clinicopathological factors between the two groups classified by sarcopenia in patients 70 years of age and older. Patients with sarcopenia had less skeletal muscle, were more likely to be hepatitis B positive, and less likely to be hepatitis C negative. There were no significant differences regarding other parameters between the two groups in patients 70 years of age and older.

Table 3 Cox proportional hazard model of all clinical characteristics on disease-free survival using univariable and multivariable analysis in patients with hepatocellular carcinoma aged 70 years and older

Variables	Univariable analysis		Multivariable analysis	
	Hazard ratio	P-value	Hazard ratio	P-value
Gender (male)	1.733 (0.903, 3.324)	0.0981		
HBs Ag(+)	1.244 (0.879, 3.984)	0.7133		
HCV ab(+)	0.829 (0.507, 1.355)	0.4559		
Diabetes mellitus	0.675 (0.372, 1.222)	0.1948		
Sarcopenia (+)	1.766 (1.048, 2.976)	0.0324	1.821 (1.037, 3.194)	0.0366
Body mass index, kg/m ²	0.958 (0.889, 1.032)	0.2555		
Albumin, g/dL	0.940 (0.562, 1.572)	0.8129		
Total bilirubin, mg/dL	1.043 (0.529, 2.055)	0.9039		
AST, IU/L	0.998 (0.991, 1.004)	0.4929		
Platelet count, 10 ⁴ /μL	0.985 (0.950, 1.020)	0.3968		
ICGR15, %	1.021 (0.990, 1.053)	0.1810		
CRP, mg/dL	1.347 (1.144, 1.587)	0.0004		
PNI	0.976 (0.941, 1.012)	0.1876		
Child–Pugh B	3.058 (1.066, 8.772)	0.0376		
Liver cirrhosis, I+IIc	1.075 (0.650, 1.776)	0.7786		
Tumor size, cm	1.087 (1.009, 1.171)	0.0291		
Multiple tumor number	2.890 (1.661, 5.025)	0.002		
Stage (III + IV)	2.439 (1.641, 3.606)	0.0001	2.044 (1.004, 4.167)	0.0487
Poor differentiation (+)	1.436 (0.840, 2.457)	0.1856		
mvi (+)	1.486 (0.906, 2.433)	0.1172		
im (+)	3.184 (1.602, 6.329)	0.0009		
AFP, ng/mL	1.000 (1.000, 1.000)	0.2427		
DCP, mAUI/L	1.000 (1.000, 1.000)	0.1115		
Operative procedures (Anatomical)	1.590 (0.972, 2.597)	0.0647		
Operative time, min	1.000 (0.998, 1.002)	0.7304		
Estimated blood loss, g	1.000 (1.000, 1.001)	0.0495		
Blood transfusion (+)	2.398 (1.266, 4.545)	0.0073	2.941 (1.086, 8.000)	0.0339
Postoperative complications (+)	0.988 (0.515, 1.893)	0.9711		
Postoperative hospital stay, days	1.001 (0.987, 1.016)	0.8472		

Values in parentheses are 95% confidence intervals.

AFP, α -fetoprotein; AST, aspartate aminotransferase; CRP, C reactive protein; DCP, des- γ -carboxy prothrombin; HBs Ag, hepatitis B surface antigen-positive; HCV ab, hepatitis C antibody-positive; ICGR15, indocyanine green dye retention test at 15 min; im, intrahepatic metastasis; I+IIc, liver cirrhosis; I+IIc, liver fibrosis; mvi, microvascular invasion; PNI, prognostic nutrition index; poor differentiation, poorly differentiated hepatocellular carcinoma; Stage, TNM stage; defined by the Liver Cancer Study Group of Japan.

Table 4 Comparison of clinicopathological factors between the two groups of patients with hepatocellular carcinoma (HCC) classified by sarcopenia, aged 70 years and older

Variables	With sarcopenia (n = 57)	Without sarcopenia (n = 82)	P-value
Age, years	76.5 ± 3.9	75.9 ± 4.0	0.345
Male / female	40/17	58/24	0.943
HBV	6 (10.5%)	1 (1.2%)	0.019
HCV	27 (47.3%)	56 (68.3%)	0.021
Skeletal muscle mass, cm ² /m ²	61.7 ± 10.7	77.4 ± 9.8	<0.001
Body mass index, kg/m ²	23.3 ± 3.2	23.0 ± 3.5	0.6445
Diabetes mellitus	15 (26.3%)	25 (30.5%)	0.4373
Albumin, g/dL	3.8 ± 0.4	3.9 ± 0.5	0.9717
Total bilirubin, mg/dL	0.8 ± 0.4	0.8 ± 0.43	0.9345
AST, IU/L	44 ± 33	49 ± 35	0.4086
Platelet count, 10 ⁴ /μL	16.1 ± 6.7	16.4 ± 6.9	0.8190
ICGR15, %	14.5 ± 7.5	14.9 ± 7.5	0.7520
CRP	0.60 ± 1.74	0.28 ± 0.64	0.1427
PNI	45.7 ± 5.9	46.3 ± 6.8	0.6090
Child–Pugh A/B	53/4	78/4	0.7164
Hepatitis grade, none / mild / severe	10/43/4	11/63/8	0.3695
Liver cirrhosis, nl + ch/lf + lc	38/19	45/37	0.2176
Tumor size, cm	4.0 ± 2.8	4.0 ± 3.0	0.9012
Solitary / multiple	44/13	72/10	0.1095
Stage, I / II / III / IV	9/31/14/3	15/42/21/4	0.9758
Differentiation, well / mod / poor	3/41/13	10/52/20	0.829
mvi (+)	18 (31.5%)	30 (36.5%)	0.889
im (+)	5 (8.8%)	7 (8.5%)	0.961
AFP, ng/mL	3890 ± 22 484	2231 ± 7743	0.539
DCP, mAU/L	1923 ± 8969	4910 ± 28 291	0.4427
(Anatomical / non-anatomical)	23/34	34/48	0.8956
Operative time, min	329 ± 107	344 ± 117	0.4649
Estimated blood loss, g	625 ± 640	612 ± 540	0.9026
Blood transfusion (+)	9 (17.3%)	14 (17.0%)	0.876
Postoperative complications	7 (12.2%)	15 (18.3%)	0.4791
Postoperative hospital stay, days	15 ± 11	18 ± 17	0.2330

Data are expressed as means ± standard deviations or number of patients (percentage) as appropriate. AFP, α -fetoprotein; AST, aspartate aminotransferase; ch, chronic hepatitis; CRP, C reactive protein; DCP, des- γ -carboxy prothrombin; HBV, hepatitis B antigen-positive; HCV, hepatitis C antibody-positive; ICGR15, indocyanine green dye retention test at 15 min; im, intrahepatic metastasis; lc, liver cirrhosis; lf, liver fibrosis; mod, moderately differentiated HCC; mvi, microvascular invasion; PNI, prognostic nutrition index; nl, normal liver; poor, poorly differentiated HCC; Stage, TNM stage defined by the Liver Cancer Study Group of Japan; well, well differentiated HCC.

Prognostic nutrition index was correlated with skeletal muscle mass ($PNI = 40.019 + 0.086 \times \text{skeletal muscle mass}$, $r^2 = 0.030$, $P = 0.045$) (Fig. 3) in elderly patients.

DISCUSSION

USING MULTIVARIATE ANALYSIS, this retrospective study indicated that sarcopenia is an independent prognostic factor for OS and DFS among patients 70 years

of age and older with HCC. This is the first report to discuss the relationship between sarcopenia and prognosis in elderly patients with HCC after hepatectomy.

Our previous study¹³ revealed the relationship between sarcopenia and prognosis, but subgroup analysis regarding aging was not investigated. With the proportion of elderly increasing rapidly worldwide, it is feared that the number of patients with sarcopenia may gradually increase in the forthcoming years, especially in cancer patients.

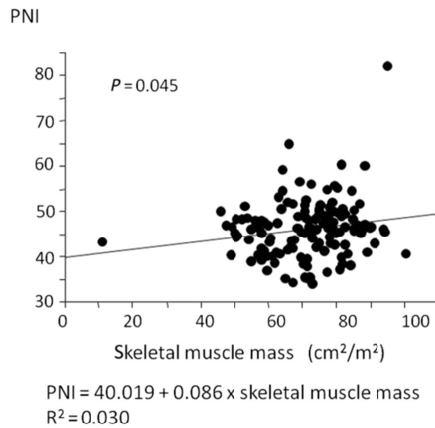


Figure 3 Prognostic nutrition index (PNI) was weakly correlated with skeletal muscle mass ($PNI = 40.019 + 0.086 \times \text{skeletal muscle mass}$, $r^2 = 0.030$, $P = 0.045$) in elderly patients.

There are some reports that muscle mass as measured by CT is associated with the prognosis of sarcopenia.^{7–13} Computed tomography is a gold standard for quantifying skeletal muscle mass, and it constitutes a good resource for objective and detailed nutritional and metabolic assessment of patients. Moreover, a CT scan is always carried out before hepatectomy, and it is a feasible method of precisely assessing sarcopenia. However, the definition of sarcopenia using CT measurement has been set using an unfounded cut-off level, and has not been accurately determined as yet, especially in Japanese people. We reported¹³ survival rates in patients with sarcopenia in which cut-off values for skeletal muscle were 43.75 cm²/m² in men and 41.10 cm²/m² in women, according to a previous report in Germany.⁸ Yoshizumi *et al.*²⁰ retrospectively studied healthy Japanese adults to establish formulae to calculate standard muscle area to enable an easy and accurate definition of sarcopenia. They analyzed skeletal muscle area using CT data from healthy adults and found that BSA significantly correlated with skeletal muscle area. Sarcopenia can be defined as a difference between measured and calculated data using this newly established formula. Using this criteria, sarcopenia was present in 37.8% patients with HCC compared with 40.3% in a previous report,¹³ which was a similar proportion.

In this study, elderly patients had a significantly lower serum albumin levels, lower PNI levels, percentage of liver cirrhosis, and histological im compared with those aged

younger than 70 years. In aging people, liver function such as serum albumin level will be gradually decreasing.²⁶ Inflammation-based prognostic scores such as PNI reflect the nutrition and immune status, which are useful prognostic parameters.^{27,28} The PNI was correlated with skeletal muscle mass in elderly patients. Skeletal muscle in patients 70 years of age and older was significantly smaller than that of patients younger than 70 years, but the number with sarcopenia was not different between the two groups. To date, sufficient evidence exists that hepatectomy can be safely undertaken in selected elderly patients who have sufficient skeletal muscle.^{14–16} The problem with this study was that it was retrospective and the population of elderly was selected.

The Child–Pugh classification was the first systematic and conventional approach used to determine the severity of cirrhosis and select patients who could tolerate hepatic resection; however, it is not always a reliable indicator of hepatic reserve, and it has a limited role in predicting post-operative outcome. To evaluate the general condition of patients before hepatectomy, no useful, objective, easy, and precise marker has been identified. The European Working Group on Sarcopenia in Older People recommends using the presence of both low muscle mass and low muscle function for the diagnosis of sarcopenia.³ However, muscle function is difficult to evaluate, and thus, low muscle mass was investigated in this study. Among patients 70 years of age and older with HCC, there was no correlation between sarcopenia and age, sex, liver function, tumor-associated factor, or operative factor except for skeletal muscle. There is no report concerning the relationship between viral status and sarcopenia.

Among the significant prognostic factors of OS and DFS, skeletal muscle mass, tumor number, and stage can be evaluated before hepatectomy. The identification of sarcopenia patients before hepatectomy might permit early preventive strategies to maintain muscle mass in order to improve their prognosis or improve the patient selection criteria for hepatectomy.

The mechanism by which sarcopenia shortens the survival of malignant patients remains poorly understood. Skeletal muscle was recently identified as an endocrine organ.⁶ It has therefore been suggested that cytokines and other peptides are produced, expressed, and released by muscle fibers, such as tumor necrosis factor- α , interleukin-6, and insulin-like growth factor 1. Low levels of skeletal muscle also indicate a systemic inflammatory response. Further study is needed to clarify the molecular mechanism concerning muscle–liver cross-talk.

This retrospective analysis revealed that sarcopenia was predictive of a worse OS and RFS after hepatectomy in

patients aged 70 years and older with HCC. As the aging population increases, this information will be useful for elderly people who need surgery.

REFERENCES

- WHO Interesting facts about ageing. Available at: <http://www.who.int/ageing/about/facts/en/>. Accessed March 15, 2016.
- Rosenberg I. Summary comments: epidemiological and methodological problems in determining nutritional status of older persons. *Am J Clin Nutr* 1989; 50: 1231–3.
- Cruz-Jentoft AJ, Baeyens JP, Bauer JM *et al*. European Working Group on Sarcopenia in Older People. Sarcopenia: European consensus on definition and diagnosis: Report of the European Working Group on Sarcopenia in Older People. *Age Ageing* 2010; 39(4): 412–23.
- Makary MA, Segev DL, Pronovost PJ *et al*. Frailty as a predictor of surgical outcomes in older patients. *J Am Coll Surg* 2010; 210(6): 901–8.
- Baumgartner RN, Koehler KM, Gallagher D *et al*. Epidemiology of sarcopenia among the elderly in New Mexico. *Am J Epidemiol* 1998; 147: 755–63.
- Pedersen BK, Febbraio MA. Muscles, exercise and obesity: skeletal muscle as a secretory organ. *Nat Rev Endocrinol* 2012; 8(8): 457–65.
- Tan BH, Birdsall LA, Martin L *et al*. Sarcopenia in an overweight or obese patient is an adverse prognostic factor in pancreatic cancer. *Clin Cancer Res* 2009; 15(22): 6973–9.
- van Vledder MG, Levolger S, Ayez N *et al*. Body composition and outcome in patients undergoing resection of colorectal liver metastases. *Br J Surg* 2012; 99(4): 550–7.
- Sabel MS, Lee J, Cai S *et al*. Sarcopenia as a prognostic factor among patients with stage III melanoma. *Ann Surg Oncol* 2011; 18(13): 3579–85.
- Montano-Loza AJ, Meza-Junco J, Prado CM *et al*. Muscle wasting is associated with mortality in patients with cirrhosis. *Clin Gastroenterol Hepatol* 2012; 10(2): 166–73.
- Englesbe MJ, Patel SP, He K *et al*. Sarcopenia and mortality after liver transplantation. *J Am Coll Surg* 2010; 211(2): 271–8.
- Masuda T, Shirabe K, Ikegami T *et al*. Sarcopenia is a prognostic factor in living donor liver transplantation. *Liver Transpl* 2014; 20(4): 401–7.
- Harimoto N, Shirabe K, Yamashita YI *et al*. Sarcopenia as a predictor of prognosis in patients following hepatectomy for hepatocellular carcinoma. *Br J Surg* 2013; 100(11): 1523–30.
- Shirabe K, Kajiyama K, Harimoto N *et al*. Early outcome following hepatic resection in patients older than 80 years of age. *World J Surg* 2009; 33(9): 1927–32.
- Menon KV, Al-Mukhtar A, Aldouri A *et al*. Outcomes after major hepatectomy in elderly patients. *J Am Coll Surg* 2006; 203(5): 677–83.
- Aldrighetti L, Arru M, Calori G *et al*. Impact of age on the outcome of liver resections. *Am Surg* 2004; 70(5): 453–60.
- Taketomi A, Kitagawa D, Itoh S *et al*. Trends in morbidity and mortality after hepatic resection for hepatocellular carcinoma: an institute's experience with 625 patients. *J Am Coll Surg* 2007; 204(4): 580–7.
- Shirabe K, Kanematsu T, Matsumata T *et al*. Factors linked to early recurrence of small hepatocellular after hepatectomy: univariate and multivariate analyses. *Hepatology* 1991; 14: 802–5.
- Shimada M, Takenaka K, Fujiwara Y *et al*. Risk factors linked to postoperative morbidity in patients with hepatocellular carcinoma. *Br J Surg* 1998; 85: 195–8.
- Yoshizumi T, Shirabe K, Nakagawara H *et al*. Skeletal muscle area correlates with body surface area in healthy adults. *Hepatol Res* 2014; 44(3): 313–8.
- Liver Cancer Study Group of Japan. *General rules for the clinical and pathological study of primary liver cancer*, 2nd English edn. Tokyo: Kanehara & Co., 2003; 34–5.
- Dindo D, Demartines N, Clavien PA. Classification of surgical complications: a new proposal with evaluation in a cohort of 6336 patients and results of a survey. *Ann Surg* 2004; 240(2): 205–13.
- Yamashita Y, Hamatsu T, Rikimaru T *et al*. Bile leakage after hepatic resection. *Ann Surg* 2001; 233: 45–50.
- Rahbari NN, Koch M, Mehabi A *et al*. Portal triad clamping versus vascular exclusion for vascular control during hepatic resection: a systematic review and meta-analysis. *J Gastrointest Surg* 2009; 13: 558–68.
- Shimada M, Takenaka K, Gion T *et al*. Prognosis of recurrent hepatocellular carcinoma: a 10-year surgical experience in Japan. *Gastroenterology* 1996; 111(3): 720–6.
- Baumgartner RN, Koehler KM, Romero L *et al*. Serum albumin is associated with skeletal muscle in elderly men and women. *Am J Clin Nutr* 1996; 64(4): 552–8.
- Kinoshita A, Onoda H, Imai N *et al*. Comparison of the prognostic value of inflammation-based prognostic scores in patients with hepatocellular carcinoma. *Br J Cancer* 2012; 107(6): 988–93.
- Pinato DJ, North BV, Sharma R. A novel, externally validated inflammation-based prognostic algorithm in hepatocellular carcinoma: the prognostic nutritional index (PNI). *Br J Cancer* 2012; 106(8): 1439–45.