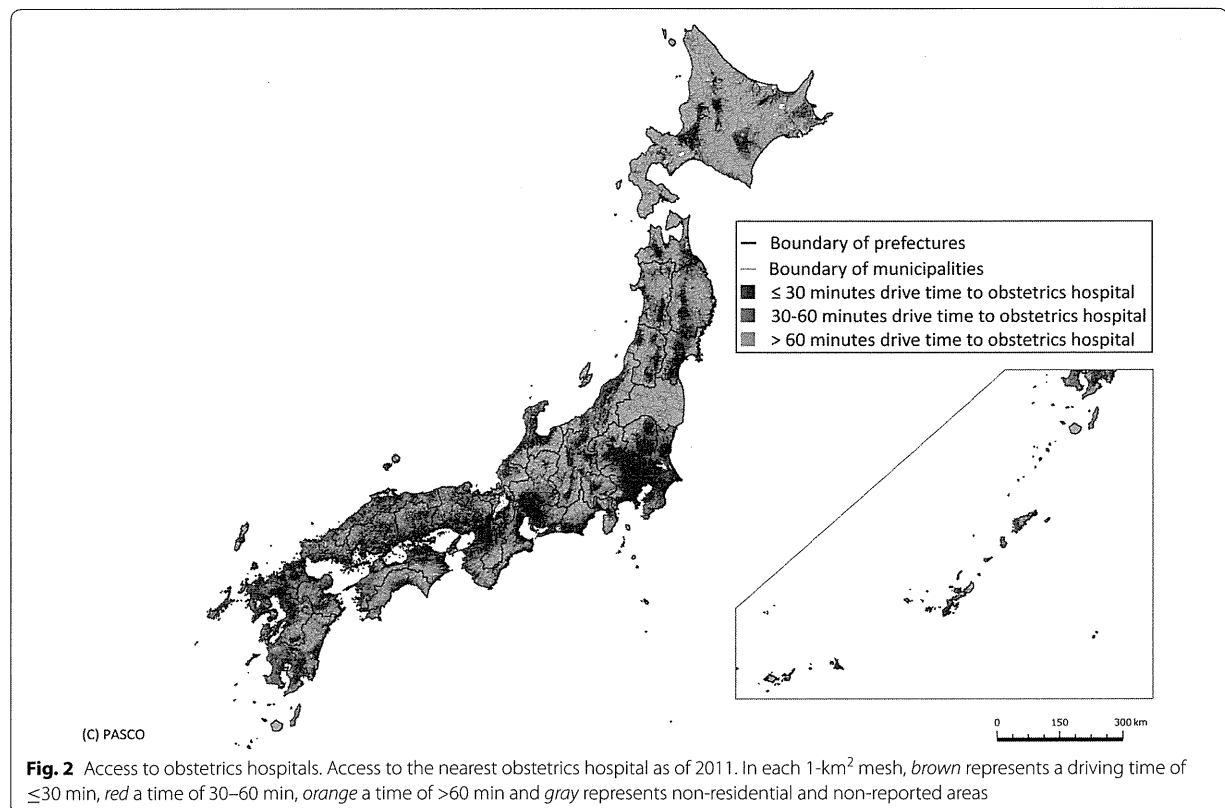


Discussion

Although there is a trade-off between intensification of facilities and access to hospitals, the negative effect of intensification could be alleviated to a certain extent by considering the distribution of obstetrics facilities rather than simply considering hospital volume. However, striking the right balance between hospital volume and access is critical. On one hand, intensification by hospital

volume alone will bring more deliveries and more medical staff to the retained hospitals, which will likely improve the quality of obstetrics services and reduce staff workload. On the other hand, too much emphasis on hospital volume will likely impair service delivery, particularly in already underserved areas, as those obstetrics hospitals located in resource-scarce (predominantly rural) areas tend to be lower volume and their closure



creates a disproportionately greater impact on accessibility than closure of urban facilities. This is partly because when MSAs, designed to combine several municipalities into a self-contained service area, are taken into account in Scenario 2, we found that preservation of some low- and middle-volume rural hospitals maintains access while allowing intensification to almost half the current level.

Although this study was conducted in one country, our findings have global implications. Some studies have used GIS to simulate obstetrics facilities [30, 31], but their focus has been on access alone and not the influence of intensification of obstetrics facilities. Studies that have been undertaken in developing countries where obstetrics facilities may be scarce have mostly sought to identify means of increasing obstetrics coverage [32–35]. As the fertility rate declines in many more developed countries, the selection and concentration of obstetrics facilities will happen regardless of the number of obstetricians available to staff them. As the Japanese fertility rate is among the lowest in

the world, our experience could provide a model for other more developed countries. Furthermore, as economic development matures, other less developed countries will ultimately face the same issues in the future. Our calculations of the numbers of deliveries and obstetrics staff that would need to be reallocated or redeployed according to each scenario, and modeling of different means of undertaking intensification, could inform public and political debate about the need for intensification of clinical services, which is a global issue. Healthcare policy makers, in Japan and other countries, must also consider means of incentivizing obstetricians to work in rural obstetrics facilities, to improve communication between hospitals, clinics and midwife-led services, and create healthcare management organizations that ensure optimal obstetrics care, considering not only the clinical services provided but also their accessibility.

Our study has several limitations. First, we employed driving time to define an outcome measure. This was estimated by GIS software, which does not take the

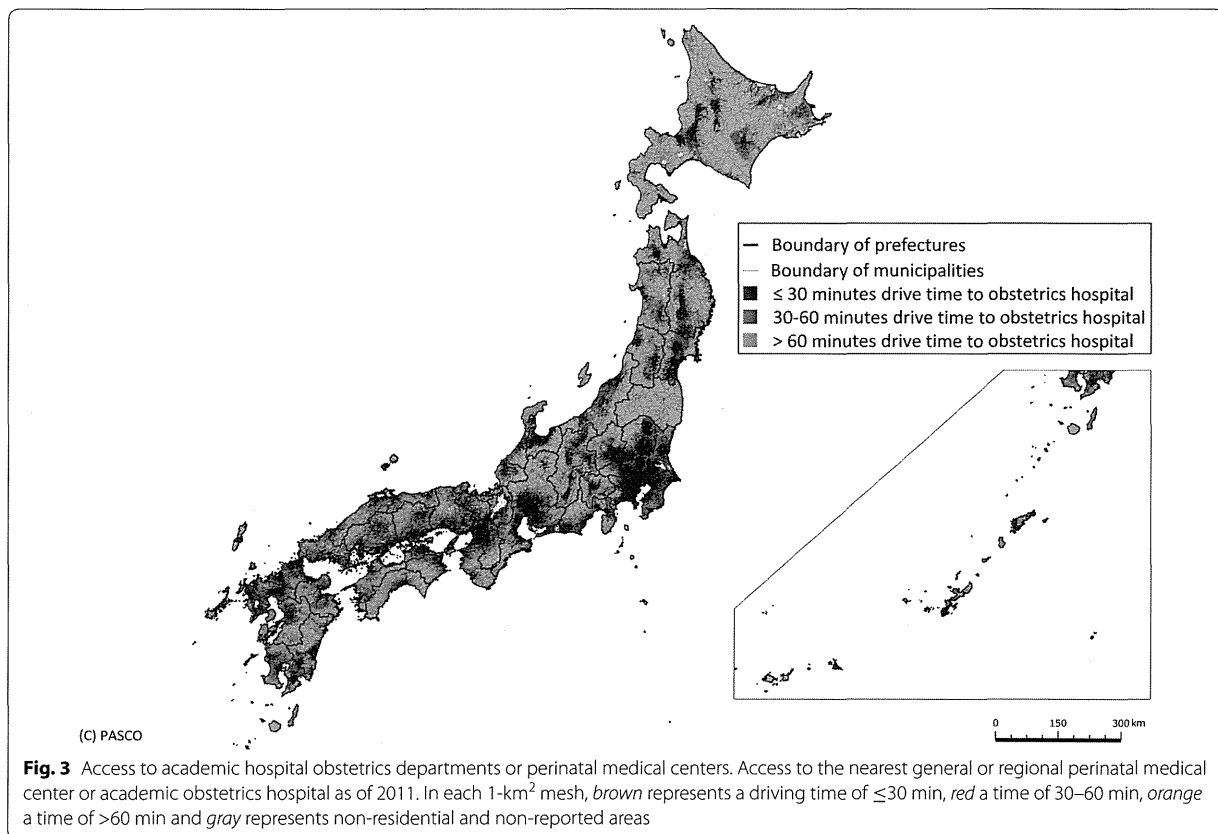
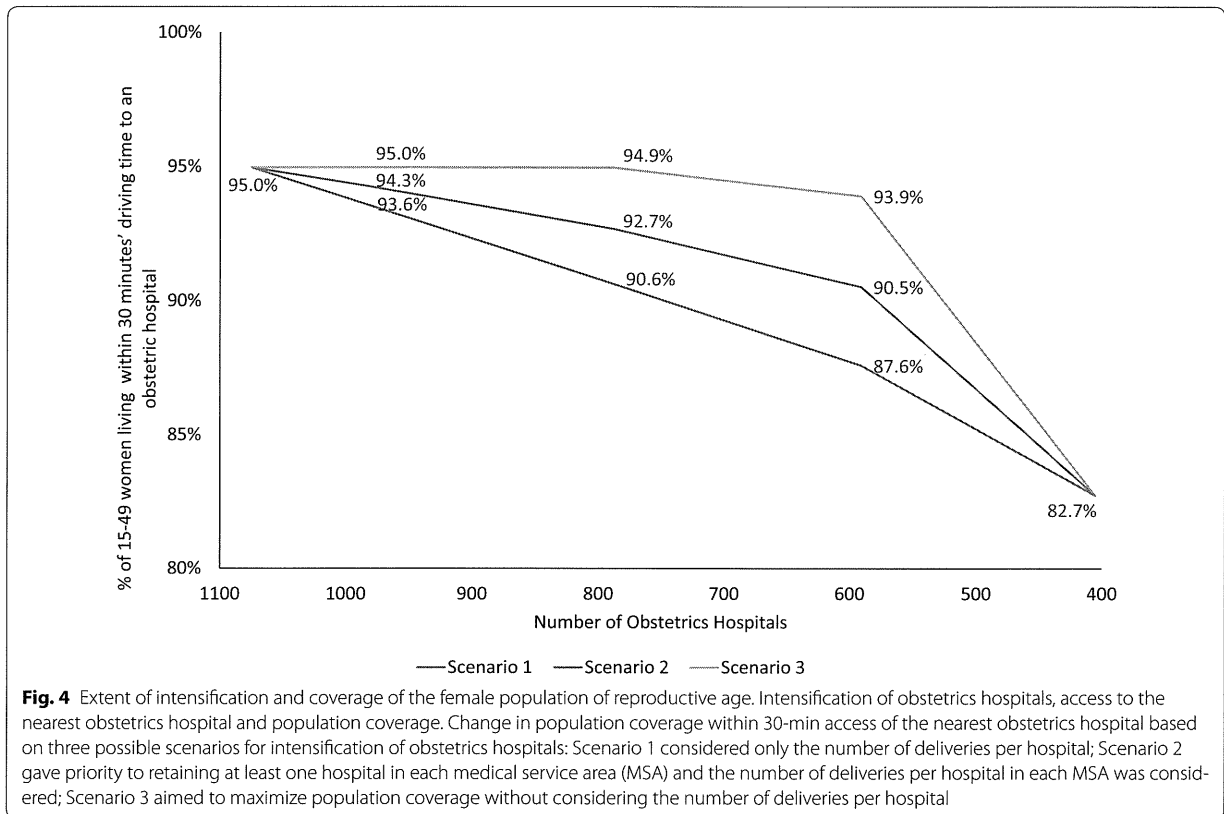


Table 3 Estimated hospital volume after intensification

Number of obstetrics hospitals (national estimate)	985 (1000)	788 (800)	591 (600)	405
Number of hospitals to be absorbed	90	287	484	670
% of obstetrics hospitals in 2011 (1075)	92	73	55	38
No. of births/hospital after intensification	47.7	58.8	78.3	114.3
No. of obstetricians/hospital after intensification	5.9	7.3	9.8	14.3
No. of midwives/hospital after intensification	16.4	20.5	27.3	39.9
Scenario 1				
No. of births absorbed by other hospitals	280	3317	9984	24,213
No. of obstetricians in closed hospitals	164.6	699.7	1451.9	2420.0
No. of midwives in closed hospitals	461.7	2196	4485.8	7346.0
Scenario 2				
No. of births absorbed by other hospitals	414	4165	12,662	24,213
No. of obstetricians in closed hospitals	174.7	774.4	1644.1	2420.0
No. of midwives in closed hospitals	475.1	2284.2	4998.3	7346.0
Scenario 3				
No. of births absorbed by other hospitals	3336	12,724	18,254	24,213
No. of obstetricians in closed hospitals	383.0	1247.8	1825.1	2420.0
No. of midwives in closed hospitals	1001.2	3486.3	5287.7	7346.0



traffic situation completely into account. Additionally, the clinical significance of longer driving times is not clear. A study of inter-facility neonatal transport found that neonatal mortality did not differ significantly between ≤ 30 - and 30–60-min transfers [36]. Second, our intensification scenarios were based on the volume of deliveries as well as MSAs; however, management, administrative and cultural differences between organizations would likely influence the actual merger of hospitals. Reopening obstetrics hospitals or building

obstetrics hospitals in new areas is another strategy that could improve access, but we did not take these factors into account.

Conclusions

Closing hospitals or curtailing local obstetrics services is unpopular with the public. Policy makers planning intensification of obstetrics facilities must balance any negative impact on access against improved clinical outcomes and reduced costs. It is essential to consult residents of

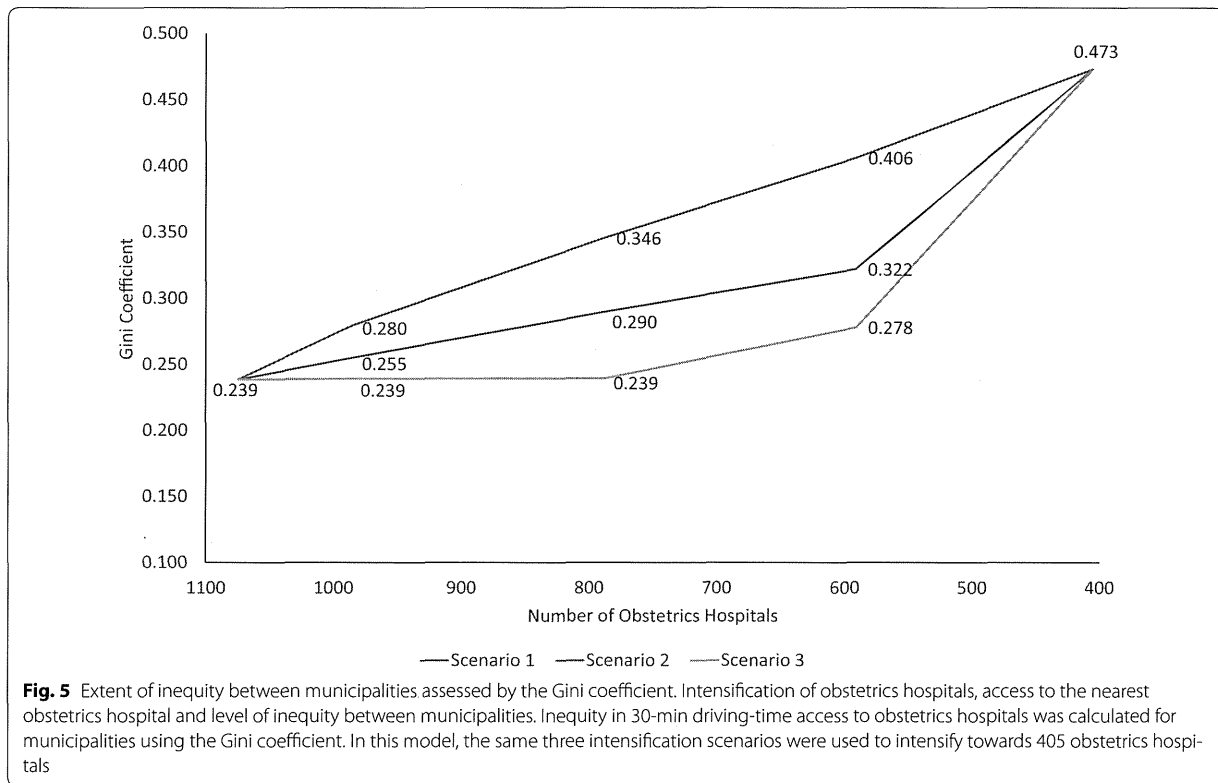


Fig. 5 Extent of inequity between municipalities assessed by the Gini coefficient. Intensification of obstetrics hospitals, access to the nearest obstetrics hospital and level of inequity between municipalities. Inequity in 30-min driving-time access to obstetrics hospitals was calculated for municipalities using the Gini coefficient. In this model, the same three intensification scenarios were used to intensify towards 405 obstetrics hospitals

hospital catchment areas when reorganizing services. A simulation provides an evidence base to inform debates on what is frequently a highly controversial issue.

Abbreviations

GIS: Geographic Information System; MSA: Medical Service Area; PMC: perinatal medical center.

Authors' contributions

SKo conceived the study, performed the analysis and drafted the manuscript. SKo and MM designed the study. SKo, MM, HI, SKa, HA, and HY interpreted the results and wrote the manuscript. All authors read and approved the final manuscript.

Author details

¹ Division of Health Policy and Management, Center for Community Medicine, Jichi Medical University, 3311-1 Yakushiji, Shimotsuke, Tochigi 329-0498, Japan. ² Department of Health Management and Policy, Graduate School of Medicine, The University of Tokyo, 7-3-1 Hongo, Bunkyo-ku, Tokyo 113-0033, Japan. ³ Department of Community-Based Medical System, Faculty of Medicine, Hiroshima University, 1-2-3 Kasumi, Minami-ku, Hiroshima 734-8551, Japan. ⁴ Department of Medical Community Network and Discharge, Chiba University Hospital, 1-8-1 Inohana, Chuo-ku, Chiba 260-8677, Japan. ⁵ Department of Public Health and Health Policy, Institute of Biomedical and Health Sciences, Hiroshima University, 1-2-3 Kasumi, Minami-ku, Hiroshima 734-8551, Japan. ⁶ Department of Planning, Information and Management, The University of Tokyo Hospital, The University of Tokyo, 7-3-1 Hongo, Bunkyo-ku, Tokyo 113-8655, Japan. ⁷ Department of Clinical Epidemiology and Health Economics, School of Public Health, The University of Tokyo, 7-3-1 Hongo, Bunkyo-ku, Tokyo 113-0033, Japan.

Acknowledgements

This study was supported by a Health Labour Sciences Research Grant from the Ministry of Health, Labour and Welfare, Tokyo, Japan (H26 Research on Statistics and Information 001). Technical assistance with GIS analysis was provided by PASCOR Corporation, Tokyo, Japan. Language editing services were provided by Convention Linkage, Inc., Tokyo, Japan.

Competing interests

The Department of Health Management and Policy, Graduate School of Medicine, University of Tokyo, where Soichi Koike is based, is an endowed department. It receives funds from Nissay Information Technology Co., Ltd., Chugai Pharmaceutical Co., Ltd., Shionogi & Co., Ltd., Asahi Kasei Pharma Corporation, CRECON Research & Consulting Inc., and Otsuka Pharmaceutical Co., Ltd. The other co-authors declare that they have no competing interests.

Received: 6 November 2015 Accepted: 14 January 2016

Published online: 22 January 2016

References

1. Capps C, Dranove D, Lindrooth RC. Hospital closure and economic efficiency. *J Health Econ.* 2010;29:87–109.
2. Lindrooth RC, Lo Sasso AT, Bazzoli GJ. The effect of urban hospital closure on markets. *J Health Econ.* 2003;22:691–712.
3. Grytten J, Monkerud L, Skau I, Sørensen R. Regionalization and local hospital closure in Norwegian maternity care—the effect on neonatal and infant mortality. *Health Serv Res.* 2014;49:1184–204.
4. Lorch SA, Srinivas SK, Ahlberg C, Small DS. The impact of obstetric unit closures on maternal and infant pregnancy outcomes. *Health Serv Res.* 2013;48:455–75.

5. Nagaya K, Fetters MD, Ishikawa M, Kubo T, Koyanagi T, Saito Y, et al. Causes of maternal mortality in Japan. *JAMA*. 2000;283:2661–7.
6. Schneider D. A methodology for the analysis of comparability of services and financial impact of closure of obstetrics services. *Med Care*. 1981;19:393–409.
7. Pilkington H, Blondel B, Carayol M, Breart G, Zeitlin J. Impact of maternity unit closures on access to obstetrical care: the French experience between 1998 and 2003. *Soc Sci Med*. 2008;67:1521–9.
8. O'Dowd A. How far is too far? *BMJ*. 2007;335(7621):640–1.
9. Poeran J, Borsboom GJ, de Graaf JP, Birnie E, Steegers EA, Mackenbach JP, et al. Does centralisation of acute obstetric care reduce intrapartum and first-week mortality? An empirical study of over 1 million births in the Netherlands. *Health Policy*. 2014;117:28–38.
10. Aoshima K, Kawaguchi H, Kawahara K. Neonatal mortality rate reduction by improving geographic accessibility to perinatal care centers in Japan. *J Med Dent Sci*. 2011;58:29–40.
11. Matsumoto M, Koike S, Matsubara S, Kashima S, Ide H, Yasunaga H. Selection and concentration of obstetric facilities in Japan: longitudinal study based on national census data. *J Obstet Gynaecol Res*. 2015;41:919–25.
12. Ministry of Health Labour and Welfare. 2008 Survey of Medical Institutions (Static Survey). Tokyo. 2009. <http://www.mhlw.go.jp/toukei/saikin/hw/iryosd/08/index.html>. Accessed 30 Oct 2015.
13. Yasunaga H. Legal intervention against medical accidents in Japan. *Risk Manag Healthc Policy*. 2008;1:39–42.
14. Kodama T, Koike S, Matsumoto S, Ide H, Yasunaga H, Imamura T. The working status of Japanese female physicians by area of practice: cohort analysis of taking leave, returning to work, and changing specialties from 1984 to 2004. *Health Policy*. 2012;105:214–20.
15. Takeda Y, Morio K, Snell L, Otaki J, Takahashi M, Kai I. Characteristic profiles among students and junior doctors with specific career preferences. *BMC Med Educ*. 2013;13:125.
16. Sakai R, Tamura H, Goto R, Kawachi I. Evaluating the effect of Japan's 2004 postgraduate training programme on the spatial distribution of physicians. *Hum Resour Health*. 2015;13:5.
17. Japan Society of Obstetrics and Gynecology. Grand design 2015 (GD2015) renovation of the obstetrics and gynecology healthcare system in Japan. Tokyo. 2015. http://shusanki.org/theme_page.html?id=282. Accessed 30 Oct 2015.
18. Unno N. The perinatal care system in Japan. *Jpn Med Assoc J*. 2011;54:234–40.
19. Ministry of Health, Labour and Welfare. 2011 Survey of Medical Institutions (Static Survey). Tokyo. 2012. <http://www.mhlw.go.jp/toukei/saikin/hw/iryosd/11/>. Accessed 30 Oct 2015.
20. Automobile Inspection and Registration Information Association. Tokyo. 2011. <http://www.airia.or.jp/publish/file/e49tph0000004lr-att/e49tph00000004ly.pdf>. Accessed 30 Oct 2015.
21. Ministry of Health, Labour and Welfare. 2010 Vital Statistics. Tokyo. 2011. <http://www.e-stat.go.jp/SG1/estat/List.do?lid=000001101841>. Accessed 30 Oct 2015.
22. He D, Yu H, Chen Y. Equity in the distribution of CT and MRI in China: a panel analysis. *Int J Equity Health*. 2013;12:39.
23. Kobayashi Y, Takaki H. Geographic distribution of physicians in Japan. *Lancet*. 1992;340:1391–3.
24. De Maio FG. Income inequality measures. *J Epidemiol Community Health*. 2007;2007(61):849–52.
25. Matsumoto M, Koike S, Kashima S, Awai K. Geographic distribution of CT, MRI and PET devices in Japan: a longitudinal analysis based on national census data. *PLoS One*. 2015;10:e0126036.
26. Shinjo D, Aramaki T. Geographic distribution of healthcare resources, healthcare service provision, and patient flow in Japan: a cross sectional study. *Soc Sci Med*. 2012;75:1954–63.
27. Brewer C, Hatchard G, Harrower M. ColorBrewer in print: a catalog of color schemes for maps. *Cartogr Geogr Inf Sci*. 2003;30:5–32.
28. Pratt M, Moore H, Craig T. Making better decisions with GIS, solving a public health problem using location-allocation. In: *Arc user summer*. 2014. <http://www.esri.com/esri-news/arcuser/summer-2014/making-better-decisions-with-gis>. (Accessed 30 Oct 2015).
29. Vora KS, Yasobant S, Sengupta R, De Costa A, Upadhyay A, Mavalankar DV. Options for optimal coverage of free C-section services for poor mothers in Indian state of Gujarat: location allocation analysis Using GIS. *PLoS One*. 2015;10:e0137122.
30. Rayburn WF, Richards ME, Elwell EC. Drive times to hospitals with perinatal care in the United States. *Obstet Gynecol*. 2012;119:611–6.
31. Brown SA, Richards ME, Elwell EC, Rayburn WF. Geographical information systems for mapping maternal ground transport to level III care neonatal centers. *Am J Perinatol*. 2014;31:287–92.
32. Falkingham J, Matthews Z, Atkinson PM. Geographical access to care at birth in Ghana: a barrier to safe motherhood. *BMC Public Health*. 2012;12:991.
33. Bailey PE, Keyes EB, Parker C, Abdullah M, Kebede H, Freedman L. Using a GIS to model interventions to strengthen the emergency referral system for maternal and newborn health in Ethiopia. *Int J Gynaecol Obstet*. 2011;115:300–9.
34. Gabrysch S, Cousens S, Cox J, Campbell OM. The influence of distance and level of care on delivery place in rural Zambia: a study of linked national data in a geographic information system. *PLoS Med*. 2011;8:e1000394.
35. Mwaliko E, Downing R, O'Meara W, Chelagat D, Obala A, Downing T, et al. "Not too far to walk": the influence of distance on place of delivery in a western Kenya health demographic surveillance system. *BMC Health Serv Res*. 2014;14:212.
36. Mori R, Fujimura M, Shiraishi J, Evans B, Corkett M, Negishi H, et al. Duration of inter-facility neonatal transport and neonatal mortality: systematic review and cohort study. *Pediatr Int*. 2007;49:452–8.

Submit your next manuscript to BioMed Central and we will help you at every step:

- We accept pre-submission inquiries
- Our selector tool helps you to find the most relevant journal
- We provide round the clock customer support
- Convenient online submission
- Thorough peer review
- Inclusion in PubMed and all major indexing services
- Maximum visibility for your research

Submit your manuscript at
www.biomedcentral.com/submit



Projected future distribution of dentists in Japan

Miho Ishimaru, DDS¹; Sachiko Ono, DDS, MPH¹; Hideo Yasunaga, MD, PhD¹; Hiroki Matsui, MPH¹; Soichi Koike, MD, PhD²

1 Department of Clinical Epidemiology and Health Economics, School of Public Health, The University of Tokyo, Bunkyo, Tokyo, Japan

2 Division of Health Policy and Management, Center for Community Medicine, Jichi Medical University, Shimotsuke, Tochigi, Japan

Keywords

dentists; supply and distribution; Markov process.

Correspondence

Hideo Yasunaga, MD, PhD, Department of Clinical Epidemiology and Health Economics, School of Public Health, The University of Tokyo, 7-3-1 Hongo, Bunkyo-ku, Tokyo 113-0033, Japan.

Tel: +81-3-5841-1887;

Fax: +81-3-5841-1888;

e-mail: yasunagah-tky@umin.ac.jp.

Received: 03/24/2015; accepted: 01/18/2016.

doi: 10.1111/jphd.12143

Journal of Public Health Dentistry 00 (2016) 00–00

Abstract

Objectives: Appropriate health policies for the supply of dentists have been an ongoing issue in many developed countries. The purpose of this study was to estimate the future distribution of dentists with different working statuses in Japan and to discuss policy implications about the supply of dentists in any country.

Methods: This was a retrospective cohort study using data from the National Survey of Physicians, Dentists and Pharmacists for 1972–2012. Based on data from the 2010 and 2012 surveys, we calculated by means of a Markov model the future number of dentists with different working statuses until 2042 according to sex.

Results: We estimated that the total number of active dentists will decrease from 2012 to 2042. The number of active dentists per 1,000 population was predicted to reach a peak in 2018, decrease by 4.2% from 2012 to 2038, and thereafter slightly increase. With regard to working status, the number of dentists with their own practices per 1,000 people was predicted to have reached a peak in 2014 and decrease by 22.0% until 2042. We estimated that the number of dentists used in dental clinics per 1,000 population will increase continuously between 2012 and 2042 by 20.0%.

Conclusions: Our study suggests that maintaining this supply of dentists may lead to maldistribution of their working status in the future.

Introduction

Securing personnel resources and achieving their appropriate allocation are important policy issues in establishing national health-care systems. Regarding dental care, it is necessary to estimate the number of dentists required in a national setting toward improving the dental health service system.

Health policy with respect to dental supply has been an ongoing issue in many developed countries. Based on predictions of an oversupply, most countries in Northern Europe have decreased the numbers of their dentists; Southern European countries have increased their numbers of dentists for several decades, which has resulted in a surplus (1,2). The United States and Australia formerly reduced their supply of dentists. However, they have recently encountered problems with respect to disparities of dental care availability and access to dental services, so they have begun establishing new dental schools to increase the supply of dentists (3–5).

In Japan, policies for the supply of dentists have undergone changes over recent decades. Of the 29 dental schools in

Japan, 22 were established between 1969 and 1981. During that period, the number of dentists increased rapidly, and the government's goal of 0.5 dentists per 1,000 people was achieved in 1984 (6). Thereafter, the government changed its policy from one of increasing to reducing the supply of dentists (7). Reportedly, the number of dentists in Japan was estimated to be excessive in the future (8–10), so the government has attempted to control the supply by decreasing admission quotas and reducing the annual number of successful candidates in national dentistry examinations. The number of newly registered dentists decreased from approximately 2,700 in 2006–2,000 in 2014 (11).

The working status of dentists includes their places of work (clinics, hospitals, and academic institutions) and employment status (employer or employee). However, no country has taken dentists' working status into consideration in controlling the number of dentists. Recently, situation in the working status of dentists has undergone change in many developed nations. For example, in the United States and the European Union, the proportion of female dentists has

gradually increased (12,13). A similar tendency has been observed in Japan: the proportion of female dentists increased from 11.7% of all dentists in 1978 to 20.2% in 2008, and the proportion of new female entrants was about 40% (14). The working patterns of female dentists are generally different from those of males: the number of female dentists in part-time employment was greater than that for male dentists, and more female dentists left their jobs at least once during their careers (14,15).

In Japan, a 1 year compulsory postgraduate clinical training program for dentists was introduced in 2006, and currently, most new entrants start their careers in academic or general hospitals for their clinical training. In this context, the future supply of dentists needs to be precisely reevaluated according to current changes in the workforce environment for dentists under the restraining policy for the supply of dentists.

To date, several reports have estimated the future numbers of dentists worldwide (1–10). Regarding working status, only one Japanese study has determined the distribution of physicians by taking their working status into account (16). However, to our knowledge, no study has undertaken a prediction of the distribution of dentists according to their changes in working status. To secure dental care availability, it is essential to make estimates of the future number of dentists and their working status for the purpose of policies that achieve an adequate supply of these health professionals.

Using data from the National Survey of Physicians, Dentists and Pharmacists (NSPDP) in Japan, the present study aimed to make future estimates of dentists for different working statuses by means of a Markov model. This study also discusses the potential health policy implications of the results, which could be helpful for any developed nation in the future.

Methods

Data source

This study was a retrospective cohort study, which made secondary use of official survey data of the Japanese government. We used data from the NSPDP, which is undertaken by the Ministry of Health, Labour and Welfare, Japan, for 1972–2012. Under the Dental Practitioners Law, all dentists are obliged to report their working status every 2 years, and the response rate to the NSPDP was approximately 87% (17). The data included the dentist's registration number, year of registration, year of birth, sex, a main working status self-reported, specialty, and municipality codes for the workplace. The data did not include personal identifiable information, such as names and address details. Using the unique registration numbers, the data for each dentist in each survey year could be linked, and we established longitudinal data for each dentist.

We excluded data where there was a lack of registration number or where duplicated registration numbers occurred.

We categorized working status, it was reported a main working status if dentists worked in multiple setting, into the following six groups: a) ownership of practice; b) employment in dental clinic; c) hospital practice; d) employment in academic institution (including practitioners, university teachers, and graduate school students); e) other (engaged in public health, researcher, or practice in nursing home); and f) not reported. If dentists worked in multiple setting, they reported a main working status. Dentists whose status was “not reported” were defined as those who had responded to the NSPDP at least once in other year of research but did not respond in the year of research.

Changes in distribution of working status

To examine the changes in distribution of working status over time, we selected dentists at 0, 5, and 10 years after registration for the years 1982, 1992, 2002, and 2012. We compared the changes in the distribution of the working status of those dentists for those four study years.

Estimation of future number of dentists

We compared working status between a) male and female dentists with n -years experience in 2010 and b) those with $(n + 2)$ years experience in 2012 ($n = 0, 1, \dots, 38$). The probabilities for change in the dentists' working status between 2010 and 2012 were calculated for each of 78 patterns with years of experience and sex. Using the 78 patterns of transition figures, we then built a Markov model to estimate the future numbers of dentists and future trends in their working status. A Markov model estimates future states using transition probabilities from one state to another state according to a number of factors. It is widely used in workforce studies forecasting human labor market (18,19). To estimate the future numbers of dentists, we assumed the following settings:

- The probabilities for change in working status for 2010–2012 did not subsequently vary.
- The probabilities for change for dentists with more than 39 years of experience were assumed to be equal to those for dentists with 38 years of experience.
- The number of dentists in 2012 was set as the base population.
- For 2011 and 2012, the numbers of new entrants were used to predict the number of new entrants for the estimation period.
- The data for 2002–2012 were used to identify the retirement year of the dentists. Dentists who did not report their status for more than two consecutive surveys were defined as retirees. We calculated the median age of the retirees as over 65 years. When the median age of a

certain registration year cohort reached the median age of retirees, all dentists in the registration year cohort were excluded in the next estimation.

For each registration year cohort, the distribution of dentists' working status in the year N was calculated by multiplying the number of dentists in the year $N-2$ by the probability of change in working status ($N=2014, 2016, \dots, 2042$). We obtained the total number of dentists in the year N to determine the number of dentists in all registration year cohorts in that year N . By repeating these processes, we obtained a prediction for the total number of dentists by working status for each year up to 2042.

We calculated the number of active dentists by determining the number of those who were in any working status – excluding those not reported. We computed the number of dentists per 1,000 population and the number of dentists for each working status per 1,000 population. We obtained future population figures from the report on Population Projections for Japan (January 2012) from the National Institute of Population and Social Security Research (20).

In addition, we incorporated a sensitivity analyses to change the fourth assumption. The number of newly registered dentists changed from 2,000 to 1,200, which was the number recommended by a governmental panel of dental health experts to retain current number of dentists per 1,000 people (10).

We performed all data analyses using software R version 3.1.1.

Results

We obtained 1,027,520 *data points* for 1972–2012. Of that number, we excluded 2,186 *data points* according to our

exclusion criteria and finally obtained a total of 1,025,335 *data points* (111,391 dentists) for our analysis. The average duration of observation was 19.3 years. The median age of retirees over 65 years old was 68 years. The number of new entrants in 2011 was 2085 (male, 1291; 61.9%); in 2012, it was 2057 (male, 1215; 59.1%).

The distribution of the working status of dentists changed from 1982 to 2012. For male dentists with 0 years of experience, the proportion of dentists working in academic institutions increased from 30.3% in 1982 to 79.6% in 2012, whereas the proportion of those used in dental clinics decreased from 40.4% in 1982 to 12.3% in 2012. For dentists with 5 years of experience, the proportion of those with their own practice decreased from 54.6% in 1982 to 7.3% in 2012, whereas the proportion used in dental clinics increased from 17.0% in 1982 to 50.6% in 2012. For dentists with 10 years of experience the proportion with their own practice decreased from 70.6% in 1982 to 38.9% in 2012, whereas the proportion of those used in dental clinics increased from 10.6% in 1982 to 33.6% in 2012. The change in the distribution of the working status of female dentists showed a similar tendency to that of male dentists.

Table 1 shows the characteristics of dentists who responded to the 2010 and 2012 surveys. The mean age of male dentists was significantly higher than that of females, and the mean age of both male and female dentists in 2012 was significantly higher than in 2010. Among male dentists, the proportion of those in their 50s was highest. Among female dentists, the proportion of those in their 30s was highest.

Figure 1 shows future estimates of the number of dentists for each working status up to 2042. The number of active dentists and dentists with their own practice is estimated to decrease from 2014 to 2042. The number of dentists used in

Table 1 Characteristics of Dentists Responding to the 2010 and 2012 Surveys

	2010 Survey			2012 Survey		
	Male ($N=80,843$)	Female ($N=26,406$)	Total ($N=107,249$)	Male ($N=83,349$)	Female ($N=28,042$)	Total ($N=111,391$)
Age, average (standard deviation)	47.0 (10.7)	41.2 (10.5)	45.6 (10.9)	48.4 (11.1)	42.2 (10.9)	46.8 (11.4)
Age category, n (%)						
≤29 years	5,157 (6.4)	3,910 (14.8)	9,067 (8.5)	4,734 (5.7)	3,641 (13.0)	8,375 (7.5)
30–39	16,346 (20.2)	9,272 (35.1)	25,618 (23.9)	15,427 (18.5)	9,422 (33.6)	24,849 (22.3)
40–49	22,750 (28.1)	6,703 (25.4)	29,453 (27.5)	21,463 (25.8)	7,192 (25.6)	28,655 (25.7)
50–59	26,070 (32.2)	5,235 (19.8)	31,305 (29.2)	26,854 (32.2)	5,755 (20.5)	32,609 (29.3)
60–69	10,207 (12.6)	1,240 (4.7)	11,447 (10.7)	14,403 (17.3)	1,971 (7.0)	16,374 (14.7)
≥70	313 (0.4)	46 (0.2)	359 (0.3)	468 (0.6)	61 (0.2)	529 (0.5)
Working status, n (%)						
Own practice	47,257 (58.5)	4,268 (16.2)	51,525 (48.0)	48,066 (57.7)	4,445 (15.9)	52,511 (47.1)
Employed in dental clinic	12,684 (15.7)	11,054 (41.9)	23,738 (22.1)	13,288 (15.9)	11,725 (41.8)	25,013 (22.5)
Hospital practice	2,130 (2.6)	730 (2.8)	2,860 (2.7)	2,106 (2.5)	746 (2.7)	2,852 (2.6)
Work in academic institution	6,170 (7.6)	3,278 (12.4)	9,448 (8.8)	6,192 (7.4)	3,432 (12.2)	9,624 (8.6)
Other	1,290 (1.6)	738 (2.8)	2,028 (1.9)	1,367 (1.6)	760 (2.7)	2,127 (1.9)
Not reported	11,312 (14.0)	6,338 (24.0)	17,650 (16.5)	12,330 (14.8)	6,934 (24.7)	19,264 (17.3)

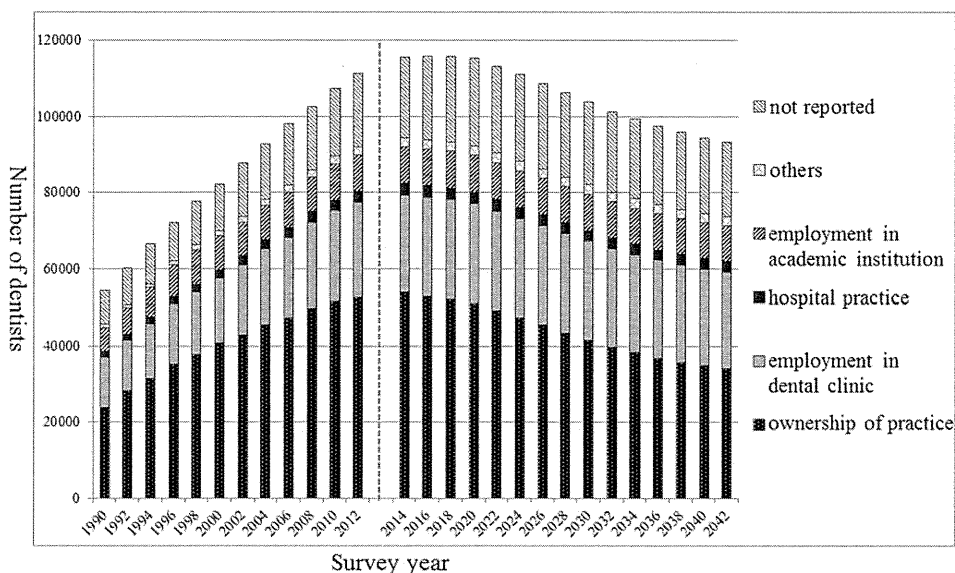


Figure 1 Estimates of the future number of dentists for each working status (1990–2012, trends; 2014–2042, estimates).

dental clinics, working in academic institutes, and with other statuses is estimated to remain almost unchanged.

Figure 2 shows the estimated number of future dentists per 1,000 people for each working status up to 2042. The number of active dentists per 1,000 population was 0.72 in 2012; it will reach a peak of 0.75 in 2018 and then decrease to 0.69 in 2036. Thereafter, it is estimated to increase again to 0.70 in 2042. With regard to working status, the future number of dentists with their own practice per 1,000 people is predicted to decrease by 22.0% (from 0.41 to 0.32) between 2012 and

2042. The number of dentists used in dental clinics per 1,000 people is predicted to increase from 0.20 in 2012 to 0.24 in 2042 – a 20.0% increase.

Figure 3 shows the estimated number of future male dentists for each working status up to 2042. The number of active male dentists and male dentists with any working status is estimated to undergo a constant decrease from 2012 to 2042.

Figure 4 shows the estimated numbers of female dentists for each working status up to 2042. The number of active female dentists and female dentists with any working status is

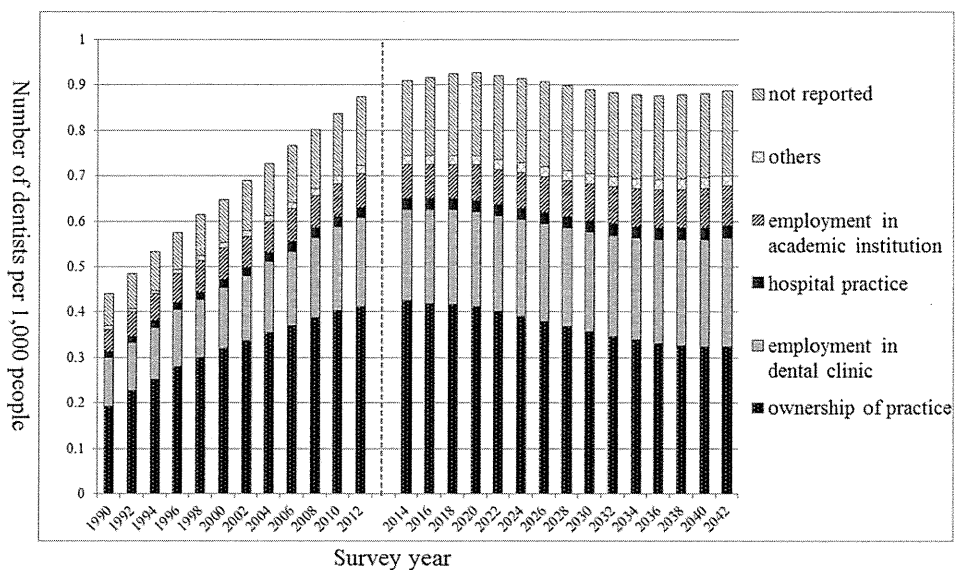


Figure 2 Estimates of the future number of dentists per 1,000 population for each working status (1990–2012, trends; 2014–2042, estimates).

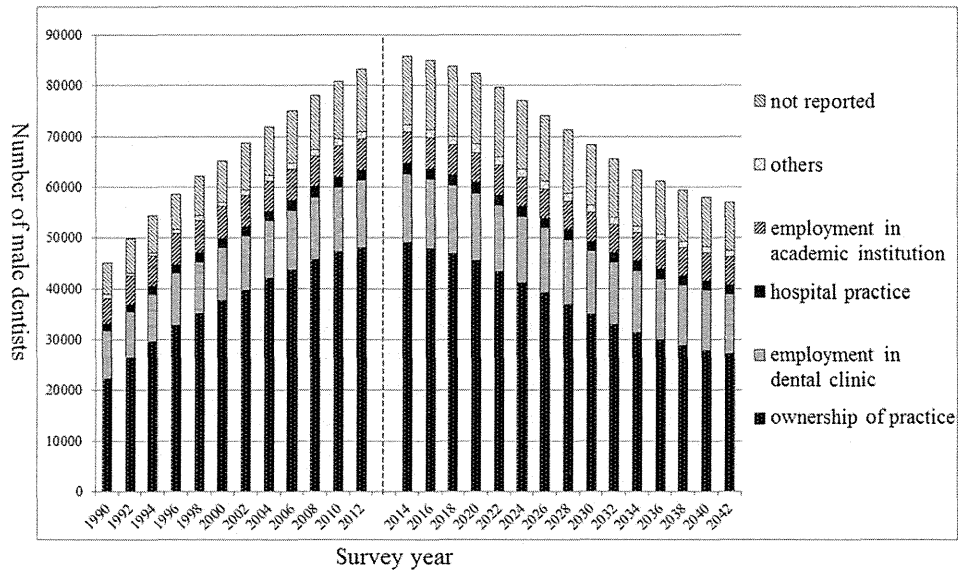


Figure 3 Estimates of the future number of male dentists for each working status (1990–2012, trends; 2014–2042, estimates).

estimated to increase, but the number of female dentists is estimated to remain unchanged after 2038.

The sensitivity analysis changing the fourth assumption, it shows the numbers of dentists with their own practice per 1,000 were estimated to decrease from 2014 to 2042, similar to primary model projection. The numbers of active dentists and dentists with employment in dental clinics was estimated to decrease from 2014 to 2042, the number of dentists with hospital practice and employment in academic institutes

were estimated to decrease from 2012 to 2042, they described a different trend from primary model projection.

Discussion

This study found that the overall number of active dentists in Japan is estimated to decrease between 2012 and 2042. We predict that the number of active dentists per 1,000 people will decrease from 2012 to 2038, and it will increase slightly

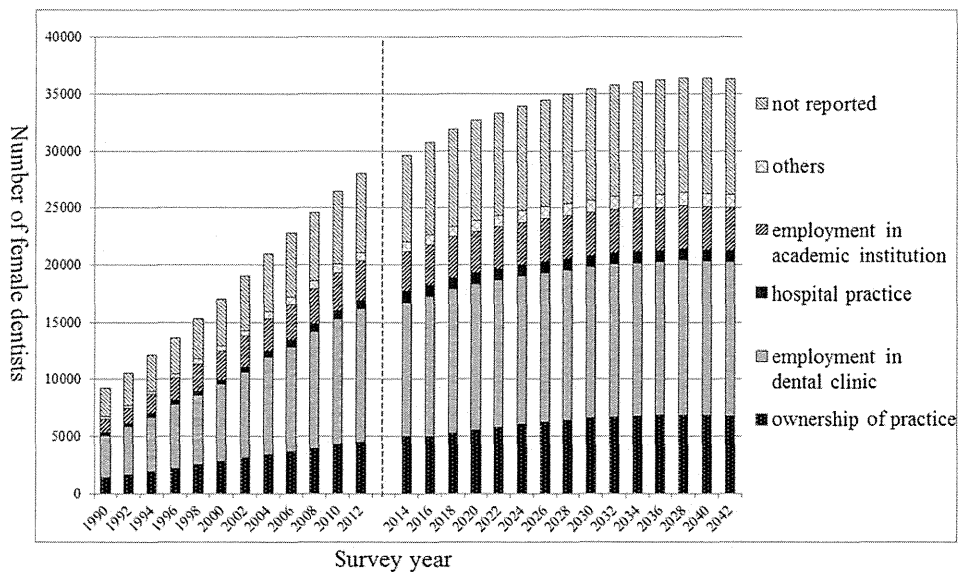


Figure 4 Estimates of the future number of female dentists for each working status (1990–2012, trends; 2014–2042, estimates).

from 2039. The future number of dentists with their own practice per 1,000 population is predicted to decrease, and the number of dentists used in dental clinics per 1,000 people is predicted to increase between 2012 and 2042.

The number of new registered dentists in Japan between 1979 and 1994 was annually more than 3,000; by contrast, that figure dropped to 2,000 annually in 2011 and 2012. This reduction is the main cause of the estimated decline in the future number of dentists. The different trend in the number of dentists with their own practice and used in dental clinics is due to the change in the distribution of working status and increase in the number of female dentists. Younger dentists are less likely to have their own practices. Female dentists are less likely than males to have their own practices. This tendency is similar to that in other countries (15,21). In addition, the Japanese population is estimated to decrease from 128.1 million in 2010 to 105.3 million in 2042 – a 17.8% decrease. This decrease in the denominator causes the relative increase in the number of active dentists per 1,000 people, which flattens the trend in the number of active dentists per 1,000 population.

In this analysis, our future estimates indicate a decline in the number of dentists with their own practices. This decrease suggests the possibility of a reduction in the number of dental clinics. The growing number of dentists used in dental clinics may lead to a relative increase in the number of dentists per clinic, which could result in a centralization of dentists to group-practice clinics. Centralization could make dental care even less accessible: one study in the United States found that most group-practice clinics were located in large-population areas (22). Further studies are necessary on the geographic distribution for each dentist's working status.

In Japanese dental workforce, dental hygienists and dental technicians are qualified nationally as auxiliary dental personnel. The number of dental hygienists per 1,000 people was 84.8, and 90.5% of them worked in dental clinics, 5.1% of them worked in hospitals. The number of dental technicians per 1,000 people was 27.1, 70.8% of them worked in dental laboratories, 27.9% of them worked in dental clinics and hospitals. (23) There was less migration effect because a high language barrier disturbed immigrant to work in clinical setting. Also, the number of dentists leaving from Japan was small, because the Japanese licenses of dentists were not permitted to practice in other countries with different from European countries. To work in other countries, Japanese dentists have to pass the dentistry examination or readmission to dental school in the country.

Regarding demand-side of dental care, Japan has universal health coverage system includes for dental care services, and the cost of national dental care gradually increased from 1.98 billion US dollars in 1995 to 2.23 billion US dollars in 2011 (24). The DMFT index of 12-year-old children decreased from 1.7 in 2006 to 1.4 in 2011 (25,26). The per-

centage of people aged 80 years old and more who remain the number of their own teeth more than 20 increased from 24.1% in 1993 to 38.3% in 2011(25,26). However, this increase caused the number of elder people with periodontal disease increases recently. Furthermore, Japanese society has been aging rapidly. Aged people need more dental care and dental care expenditure, the future demand of dental care will increase (27).

The sensitivity analysis showed a different trend to the primary analysis, with the numbers of active dentists and dentists used in dental clinics per 1,000 population estimated to decrease. We used “1,200 newly registered dentists” in our sensitivity analysis. This figure was recommended by the governmental panel of dental health experts to retain the current number of dentists per 1,000 people (10). However, our projection suggests that 1,200 newly registered dentists may not be enough to retain the current number of dentists per 1,000 people. The primary projection showed an initial decrease, a subsequent increase, and thereafter a flattening in these numbers. These two analyses indicate that the appropriate number of newly registered dentists for Japan may be around 2,000, and suggest that a sharp decrease in the number of newly registered dentists should be avoided to secure the dental workforce in the long term.

This study has some limitations. First, each research year, about 20,000 dentists had “not reported” status; that could have influenced the probability related to change in status. The actual working status of those “not reported” dentists was unknown: they could have died, left their jobs or actually been working. If there was a tendency for some dentists with a particular working status being less likely to report, that could have caused a self-selection bias among the respondents. Second, the five assumptions we made for our estimation could change in the future. In particular, for simplicity, we used only the probabilities of change in working status between 2010 and 2012. The retirement age of the dentists was set at the median age calculated from the data for 2002–2012; however, that may have been different from the actual retirement age. In some countries, male dentists are reported to work longer than female dentists, and dentists with their own practices are reported to work longer than those used in dental clinics (15,28,29). Third, the database does not include information about time worked (part-time or full-time) and capacity to provide visits and service though the information is relevant to understand the dental work force.

Despite these limitations, this study offers useful information in the debate on policies related to an adequate supply of dentists. Our five assumptions will be susceptible to change in the future and periodic reanalysis might be warranted.

Our study on Japan's efforts to control the supply of dentists has important health policy implications for securing personnel resources and their appropriate allocation; this is potentially useful for any type of health-care profession in

any country. A simple quantitative restriction of the total supply of health-care providers may lead to maldistribution of their working status. Governments should take into account not only the total number of health-care providers but also the distribution of their working status when deciding about the supply of such providers. The workforce projections might help form a basis for further policy efforts, such as incentive programs or alternative providers, to ensure a more equitable distribution of services.

Conclusions

Using national data for Japan, this study estimated that the total number of dentists will decrease and that the number of dentists per 1,000 people will initially decrease but then increase from 2038. The number of dentists with their own practices is estimated to decrease constantly; the number of dentists used in dental clinics is estimated to increase constantly. When policy makers make decisions about supplying health-care providers, it is essential to take into account the distribution of those providers' working status as well as their total number.

Acknowledgments

This study was funded by a grant from the Ministry of Health, Labour and Welfare of Japan (Research on Policy Planning and Evaluation grant number: H26-Statistics-001).

References

1. Kravitz AS, Tressure ET. *Manual of dental practice, 2008*. Brussels: Council of European Dentists; 2008.
2. Koletsi-Kounari H, Papaioannou W, Stefaniotis T. Greece's high dentist to population ratio: comparisons, causes, and effects. *J Dent Educ*. 2011;75:1507–15.
3. Australian Research Centre for Population Oral Health, The University of Adelaide, South Australia, Chrisopoulos S, Teusner DN. Dentist labour force projections 2005 to 2020: the impact of new regional dental schools. *Aust Dent J*. 2008;53:292–6.
4. Gutherie D, Valachovic WR, Brown LJ. The impact of new dental schools on the dental workforce through 2022. *J Dent Educ*. 2009;73:1353–60.
5. Irene V, Hilton, Arlene M, Lester. Oral health disparities and the workforce: a framework to guide innovation. *J Public Health Dent*. 2010;7:S15–23.
6. Katabami J, Kanamori M, Honda Y, Kaneko I, Fujisaki K. A future estimation of supply-demand of dentists in Japan. *Kosei no Shihyo*. 1986;33(13):11–22. Japanese.
7. A Final Report of a Study Council Meeting about Dental Health, Supply-Demand of Dentists in the Future. Tokyo: Dental Health Division, Health Policy Bureau, The Ministry of Health, Labour and Welfare, Japan; 1986. Japanese.
8. Okawa Y, Okada S, Tanaka S, Tsumura A, Miyatake K. A future estimation of supply-demand of dentists. *Kosei no Shihyo*. 1995;42(15):11–20. Japanese.
9. Morimoto M, Miyatake K, Shizukuishi S, Kawabuchi K, Ouchi A. The estimation of supply and demand of dentists in Japan. *J Jpn Dent Educ Assoc*. 1998;14(2):270–81. Japanese.
10. Interim Report of a Study Council Meeting about Dental Health, Dental Service and Dentists in the Future [Internet]. Tokyo: Dental Health Division, Health Policy Bureau, The Ministry of Health, Labour and Welfare, Japan; 2006 [cited 2016 Feb 6]. Available from: <http://www.mhlw.go.jp/shingi/2006/12/s1208-9.html>. Last accessed February 6, 2016. Japanese.
11. National Dentistry Examination Result Announcement [Internet]. The Ministry of Health, Labour and Welfare, Japan; 2015 [cited 2016 Feb 6]. Available from: <http://www.mhlw.go.jp/general/sikaku/successlist/siken02/about.html>. Japanese.
12. Reed MJ, Corry AM, Liu YW. The role of women in dental education: monitoring the pipeline to leadership. *J Dent Educ*. 2012;76:1427–36.
13. Kravitz AS, Bullock A, Cowpe J. *Manual of dental practice*. 5th ed. Brussels: Council of European Dentists; 2014.
14. Takeuchi K, Kodama T, Ando Y. A tendency for the supply of dentists using data from the survey of physicians, dentists and pharmacists [Internet]. The report on Grant-in-Aid for Scientific Research; 2010 [cited 2016 Feb 6]. Available from: http://www.niph.go.jp/soshiki/koku/oralhealth/juq/jyukyuu/docu22/docu22_17.pdf. Japanese.
15. Ayers KMS, Thomson WM, Rich AM, Newton JT. Gender differences in dentists' working practices and job satisfaction. *J Dent*. 2008;36:343–50.
16. Koike S, Yasunaga H, Matsumoto S, Ide H, Kodama T, Imamura T. A future estimate of physician distribution in hospitals and clinics in Japan. *Health Policy*. 2009;92:244–9.
17. Shimada N, Kondo T. Estimation of actual report rates using data from the survey of physicians, dentists and pharmacists. *Nippon Koshu Eisei Zasshi*. 2004;51:117–32. Japanese.
18. Guy H, Christophe C, Chantal M, Davide Z, François C. Impact of policies regulating foreign physician migration to Switzerland: a modeling case study in anaesthesia. *BMC Health Serv Res*. 2015;15:204–11.
19. Mylene L, John C. Modling human resources policies with Markov models: an illustration with the South African nursing labour market. *Health Care Manag Sci*. 2012;15:270–82.
20. Population Projections for Japan (January 2012): 2011 to 2060 [Internet]. (2012) [cited 2016 Feb 6]. Available from: http://www.ipss.go.jp/site-ad/index_english/esuikei/gh2401e.asp.

21. Newton TJ, Thorogood N, Gibbons DE. The work patterns of male and female dental practitioners in the United Kingdom. *Int Dent J*. 2000;**50**:61–8.
22. Guay AH, Wall TP, Patersen BC, Lazar VF. Evolving trends in size and structure of group dental practices in the United States. *J Dent Educ*. 2012;**76**(8): 1036–44.
23. The Ministry of Health, Labour, Welfare, Japan [Internet]. Report on Public Health Services and Health Promotion Services; 2013 [cited 2016 Feb 6]. Available from: http://www.mhlw.go.jp/toukei/saikin/hw/eisei_houkoku/13/. Japanese.
24. Press Release on Survey on the Trend of Medical Care Expenditures [Internet]. The Ministry of Health, Labour and Welfare, Japan; 2014 [cited 2016 Feb 6]. Available from: http://www.mhlw.go.jp/topics/medians/year/14/dl/iryohi_data.pdf. Japanese.
25. The Statistics Analysis Committee on the Survey of Dental Disease. *Comprehensive Guide to the Survey of Dental Disease 2005*. Tokyo: Oral Health Association of Japan; 2007. Japanese.
26. The Statistics Analysis Committee on the Survey of Dental Disease. *Comprehensive Guide to t Liou, Amy Ming-Fang Yen, Tony Hsiu-Hsi Chenhe Survey of Dental Disease 2011*. Tokyo: Oral Health Association of Japan; 2013. Japanese.
27. Kossioni AE. Is Europe prepared to meet the oral health needs of older people? *Gerodontology*. 2012;**29**: e1230–40.
28. Schofield D, Fletcher S, Page S, Callander E. Retirement intentions of dentists in New South Wales, Australia. *Hum Res Health*. 2010;**8**:9–16.
29. Janulyte V, Aleksejuniene J, Puriene A, Peciuliene V, Benzian H. Current employment characteristics and career intentions of Lithuanian dentists. *Hum Res Health*. 2014;**12**:74–81.

