

Contextual niche signals towards colorectal tumor progression by mesenchymal stem cell in the mouse xenograft model.	Nakagaki S, Arimura Y, Nagaishi K, Isshiki H, Nasuno M, Watanabe S, Idogawa M, Yamashita K, Naishiro Y, Adachi Y, Suzuki H, Fujimiya M, Imai K, Shinomura Y.	J Gastroenterol	2015 Feb.	国外
総説 橋渡し研究の展開と我が国の医療	今井浩三	東京都病院薬剤師会雑誌	2014年4月	国内
人口動態に基づいた日本医療の未来予測	湯地晃一郎, 井元清哉, 山口類, 宮野悟, 上昌広, 今井浩三.	南江堂臨床雑誌「外科」	2014年5月	国内
大規模コホートをを用いた大腸癌のノンコーディングRNA発現異常と生活習慣の分子疫学的解析	能正勝彦, 五十嵐央祥, 伊藤美樹, 三橋慧, 栗原弘義, 菅野伸一, 内藤崇史, 須河安恭, 敬, 松永康, 孝, 足立靖, 野島正寛, 今井浩三, 丸山玲緒, 鈴木拓, 山本博幸, 篠村恭久	日本癌病態治療研究会誌	2014年6月	国内
総説 私とリウマチ学	今井浩三	分子リウマチ治療	2014年10月	国内
がんエピゲノム異常を理解し、応用し、そして制御するために	鈴木拓, 今井浩三	実験医学	2014年12月	国内
抗体医薬	安井寛, 今井浩三	PHARMA TECH JAPAN 臨時増刊「DDS研究30年」	2015年1月	国内
抗体治療 特集「DDSがもたらした新しい臨床の風景」	佐々木茂, 篠村恭久, 今井浩三	Drug Delivery System	2015年1月	国内
Actively-targeted polyion complex micelles stabilized by cholesterol and disulfide cross-linking for systemic delivery of siRNA to solid tumors.	Y. Oe, R. J. Christie, M. Naito, S. A. Low, S. Fukushima, K. Toh, Y. Miura, Y. Matsumoto, N. Nishiyama, K. Miyata, K. Kataoka	Biomaterials 35(27) 7887-7895 (2014)	2014.09.01	国外

Precise engineering of siRNA delivery vehicles to tumors using polyion complexes and gold nanoparticles.	H. -J. Kim, H. Takemoto, Y. Yi, M. Zheng, Y. Maeda, H. Chaya, K. Hayashi, P. Mi, F. Pittella, R. J. Christie, K. Toh, Y. Matsumoto, N. Nishiyama, K. Miyata, K. Kataoka.	ACS Nano 8 (9) 8979-8991 (2014)	2014.08.18	国外
Fine-tuning of charge-conversion polymer structure for efficient endosomal escape of siRNA-loaded calcium phosphate hybrid micelles.	Y. Maeda, F. Pittella, T. Nomoto, H. Takemoto, N. Nishiyama, K. Miyata, K. Kataoka	Macromol. Rapid Commun. 35 13 1211-1215 (2014)	2014.07.01	国外
Oral Nutritional Support Can Shorten the Duration of Parenteral Hydration in End-of-Life Cancer Patients	Ishiki H, Iwase S, Gyouda Y, Kanai Y, Ariyoshi K, Chinzei M, Yamaguchi T.	A Randomized Controlled Trial.Nutr Cancer.in press.	2014	国外
Preferences for pharmacist counselling in patients with breast cancer: a discrete choice experiment.	Kawaguchi T, Azuma K, Yamaguchi T, Iwase S, Matsunaga T, Yamada K, Miyamatsu H, Takeuchi H, Kohno N, Akashi T, Unezaki S.	Biol Pharm Bull.	2014	国外
Omission of axillary lymph node dissection for clinically node negative early-stage breast cancer patients.	Kobayashi R, Shiraishi K, Iwase S, Ohtomo K, Nakagawa K.	Breast Cancer. Published online.	2014	国外
Single center experience of cell-free and concentrated ascites reinfusion therapy in malignancy related ascites.	Ito T, Hanafusa N, Fukui M, Hiroko Yamamoto, Watanabe Y, Noiri E, Iwase S, Miyagawa K, Fujita T, and Nangaku M.	Therapeutic Apheresis and Dialysis.	2014	国外

<p>Analysis of DNA Methylation in Bowel Lavage Fluid for Detection of Colorectal Cancer.</p>	<p>Harada T, Yamamoto E, Yamano HO, Nojima M, Maruyama R, Kumegawa K, Ashida M, Yoshikawa K, Kimura T, Harada E, Takagi R, Tanaka Y, Aoki H, Nishizono M, Nakaoka M, Tsuyada A, Niinuma T, Kai M, Shimoda K, Shinomura Y, Sugai T, Imai K, Suzuki H.</p>	<p>Cancer Prev Res (Phila)</p>	<p>2014</p>	<p>国外</p>
<p>MicroRNA-31 expression in relation to BRAF mutation, CpG island methylation and colorectal continuum in serrated lesions.</p>	<p>Ito M, Mitsuhashi K, Igarashi H, Nosho K, Naito T, Yoshii S, Takahashi H, Fujita M, Sukawa Y, Yamamoto E, Takahashi T, Adachi Y, Nojima M, Sasaki Y, Tokino T, Baba Y, Maruyama R, Suzuki H, Imai K, Yamamoto H, Shinomura Y.</p>	<p>Int J Cancer</p>	<p>2014</p>	<p>国外</p>
<p>Stage-specific roles for CXCR4 signaling in murine hematopoietic stem/progenitor cells in the process of bone marrow repopulation.</p>	<p>Lai CY, Yamazaki S, Okabe M, Suzuki S, Maeyama Y, Iimura Y, Onodera M, Kakuta S, Iwakura Y, Nojima M, Otsu M, Nakauchi H.</p>	<p>Stem Cells.</p>	<p>2014</p>	<p>国外</p>

<p>Association of microRNA-31 with BRAF mutation, colorectal cancer survival and serrated pathway.</p>	<p>Nosho K, Igarashi H, Nojima M, Ito M, Maruyama R, Yoshii S, Naito T, Sukawa Y, Mikami M, Sumioka W, Yamamoto E, Kurokawa S, Adachi Y, Takahashi H, Okuda H, Kusumi T, Hosokawa M, Fujita M, Hasegawa T, Okita K, Hirata K, Suzuki H, Yamamoto H, Shinomura Y.</p>	<p>Carcinogenesis.</p>	<p>2014</p>	<p>国外</p>
<p>Factors associated with risk for colorectal cancer recurrence after endoscopic resection of T1 tumors.</p>	<p>Yoshii S, Nojima M, Nosho K, Omori S, Kusumi T, Okuda H, Tsukagoshi H, Fujita M, Yamamoto H, Hosokawa M.</p>	<p>Clin Gastroenterol Hepatol.</p>	<p>2014</p>	<p>国外</p>
<p>Aberrant methylation of microRNA-34b/c is a predictive marker of metachronous gastric cancer risk.</p>	<p>Suzuki R, Yamamoto E, Nojima M, Maruyama R, Yamano HO, Yoshikawa K, Kimura T, Harada T, Ashida M, Niinuma T, Sato A, Nosho K, Yamamoto H, Kai M, Sugai T, Imai K, Suzuki H, Shinomura Y.</p>	<p>J Gastroenterol.</p>	<p>2014</p>	<p>国外</p>

The effect of IGF-I receptor blockade for human esophageal squamous cell carcinoma and adenocarcinoma

Yasushi Adachi · Hirokazu Ohashi · Arisa Imsumran · Hiroyuki Yamamoto · Yasutaka Matsunaga · Hiroaki Taniguchi · Katsuhiko Nosho · Hiromu Suzuki · Yasushi Sasaki · Yoshiaki Arimura · David P. Carbone · Kohzoh Imai · Yasuhisa Shinomura

Received: 1 August 2013 / Accepted: 21 August 2013 / Published online: 13 September 2013
© International Society of Oncology and BioMarkers (ISOBM) 2013

Abstract Insulin-like growth factor-I receptor (IGF-IR) signaling is required for carcinogenicity and tumor development, and this pathway has not been well studied in human esophageal carcinomas. Esophageal cancer is one of the human cancers with the worst prognosis and has two main histologies: squamous cell carcinomas (ESCC) and adenocarcinoma (EAC). Previously, we have reported that detection of the IGF axis may be useful for the prediction of recurrence and poor prognosis of ESCC. We have also shown the successful therapy for several gastrointestinal cancers using recombinant adenoviruses expressing dominant negative IGF-IR (ad-IGF-IR/dn). The aim of this study is to develop potential targeted therapeutics to IGF-IR and to assess the effect of IGF-IR blockade in both of these types of esophageal cancer. We determined immunohistochemical expression of IGF-IR in a tissue microarray. We then assessed the effect of IGF-IR blockade on signal transduction, proliferation, apoptosis, and

motility. Ad-IGF-IR/dn, a tyrosine kinase inhibitor, BMS-536924, and adenovirus expressing shRNA for IGF-IR were used. IGF-IR expression was common in both tumor types but not in normal tissues. IGF-IR was detected in metastatic sites at similar levels compared to the primary site. IGF-IR inhibition suppressed proliferation and colony formation in both cancers. IGF-IR blockades up-regulated both stress- and chemotherapy-induced apoptosis and reduced migration. Although IGF-IR/dn blocked ligand-induced activation of Akt-I mainly, BMS-536924 effectively blocked both activation of Akt and MAPK. The IGF axis might play a key role in tumor progression of esophageal carcinomas. The IGF-IR targeting strategies might thus be useful anticancer therapeutics for human esophageal malignancies.

Keywords Dominant negative · EAC · ESCC · IGF-IR · TKI

Abbreviations

ad-IGF-IR/482st	Adenovirus expressing IGF-IR /482st
ad-IGF-IR/950st	Adenovirus expressing IGF-IR/950st
ad-shIG F-IR	Adenovirus expressing short-hairpin IGF-IR
des(1–3)IGF-I	NH ₂ terminally truncated IGF-I
dn	Dominant negative
EAC	Esophageal adenocarcinoma
ESCC	Esophageal squamous cell carcinoma
ERK	Extracellular signal-regulated kinase
IGF	Insulin-like growth factor
IGFBP	IGF binding protein
IGF-IR	IGF-I receptor
IGF-IR/482st	Truncated IGF-IR of 482 amino acid long

Yasushi Adachi, Hirokazu Ohashi, and Arisa Imsumran contributed equally to this work.

Y. Adachi (✉) · H. Ohashi · A. Imsumran · H. Yamamoto · Y. Matsunaga · K. Nosho · H. Suzuki · Y. Sasaki · Y. Arimura · K. Imai · Y. Shinomura
First Department of Internal Medicine, Sapporo Medical University, S-1, W-16, Chuo-ku, Sapporo 060-8543, Japan
e-mail: yadachi@sapmed.ac.jp

H. Taniguchi · K. Imai
The Institute of Medical Science, The University of Tokyo, Tokyo, Japan

D. P. Carbone
James Thoracic Center, The Ohio State University, Columbus, OH, USA

IGF-IR/950st	Truncated IGF-IR of 950 amino acid long
IGF-IR/dn	Dominant negative form of IGF-IR
InsR	Insulin receptor
mAb	Monoclonal antibody
PI3-K	Phosphatidylinositide 3-kinase
TKI	Tyrosine kinase inhibitor

Introduction

Esophageal cancer is one of the cancers with the worse prognosis worldwide [1]. At the time of diagnosis, more than half of patients have either unresectable tumors or metastatic ones. Even after a curative-intent surgical operation, the 5-year survival is still limited [2], and the therapy for unresectable esophageal carcinomas is typically minimally effective. Therefore, we must aim to seek new therapeutic options for this disease. The main types of human esophageal tumor are squamous cell carcinoma (ESCC) and adenocarcinoma (EAC).

Recently, advances in molecular research have brought new therapeutic strategies, including small molecule tyrosine kinase inhibitors (TKI) and monoclonal antibodies (mAb), into clinical testing. One group of new targets is the tyrosine kinase receptors. The insulin-like growth factor (IGF) family is a promising candidate [3, 4]. Agents targeting the IGF-I receptor (IGF-IR) pathway are moving into the clinic. Toward that end, we have studied this pathway in esophageal cancers.

IGF-IR is a heterotetramer of two α - and two β -chains [5]. Binding of the ligands IGF-I and IGF-II to IGF-IR causes receptor autophosphorylation and activates multiple signaling pathways, including ras/extracellular signal-regulated kinase (ERK) and the phosphatidylinositide 3-kinase (PI3-K)/Akt-1 axes [6]. Activation of IGF-IR is regulated by multiple factors, including IGF binding proteins (IGFBP) and IGF-2 receptor [7–9]. Elevation of serum IGF-I increases the risk of developing several cancers [10], and IGF-IR is essential for both malignant transformation and progression [3, 4]. Reduction of IGF-IR can induce apoptosis in tumors but produces only growth slowing in untransformed cells, suggesting that it might be an excellent target for therapeutic intervention [3]. IGF-IR knockout mice are viable (though physically small), indicating that relatively normal development and differentiation can occur in its absence [11]. These findings suggest a potential basis for tumor selectivity in therapeutic applications.

Human esophageal epithelial cells express IGF-IR, and IGF-I can stimulate both DNA synthesis and proliferation in these cells [12–14]. Salivary IGF-I continuously bathes the esophageal lumen and is in a free form (not bound to IGFBP, unlike the serum pool), which could enhance its binding ability to receptors on the esophageal mucosal cells [15].

These data indicate that the IGF/receptor may play important roles in homeostasis and esophageal premalignancy [14].

Both IGF-IR and IGFs are overexpressed in esophageal cancer tissues compared to normal ones [16–18]. In addition, IGFBP3 and an IGF-IR antibody suppress cancer cell proliferation [19, 20]. However, the role of the IGF axis in esophageal cancer has not been adequately studied. We reported previously that expression of IGF-IR and IGF-II were detected in 60 and 50% of ESCC, respectively, and were associated with invasion depth, metastasis, advanced tumor stage, and recurrence [21]. Patients with ESCC expressing both IGF-IR and IGF-II had a significantly shorter survival rate than those expressing either alone or neither in both single and multivariate analysis. Dominant negative for IGF-IR (IGF-IR/dn) suppressed proliferation and up-regulating chemotherapy-induced apoptosis through blocking ligand-induced Akt activation in an ESCC cell line, TE-1 [21].

In addition, there is a strong positive association between visceral obesity (metabolic syndrome) and risk of EAC, and the IGF axis is speculated to relate to both obesity and EAC [22]. IGF-IR expression in resected EAC was significantly higher in visceraally obese patients than in those of normal weight. Disease-specific survival was longer in patients with IGF-IR-negative EAC than in those with IGF-IR-positive tumors [23]. Thus, there are several lines of evidence that the IGF axis may play an important role in EAC.

There are several possible approaches to blocking IGF-IR signaling with therapeutic intent [24], including blocking the ligand or receptor using mAbs [25, 26] or TKIs [27, 28]. All of these are complicated by the high homology of this receptor to the insulin receptor (InsR). An approach that is intrinsically specific for IGF-IR is to use dominant negative or soluble IGF-IR receptor approaches to specifically inhibit the function of the wild-type receptor [29, 30]. We have constructed two different adenoviruses expressing IGF-IR/dn (ad-IGF-IR/dn) [31–34]. Ad-IGF-IR/482st encodes a truncated extracellular domain of IGF-IR (without the transmembrane domain) and thus produces a secreted protein that affects neighboring cells in addition to the transduced cells (a bystander effect). Another ad-IGF-IR/950st encodes a receptor that lacks the tyrosine kinase domain and thus remains on the membrane of the transduced cells to form non-functional receptor complexes. We have reported that ad-IGF-IR/dn may be a useful therapeutic strategy against several gastrointestinal tumors [21, 31, 32, 34, 35]. We have also reported that the adenoviral vector-based approach to express a short-hairpin inhibitory RNA of IGF-IR (ad-shIGF-IR) induced effective IGF-IR silencing in gastrointestinal cancers as manifested by effective blockade of the downstream pathway of IGF-IR and antitumor effects [36]. A dual targeting TKI for IGF-IR/InsR, BMS-536924, may have an advantage compared to a single targeting TKI,

as transformed cells can also use insulin receptor activation of similar signaling pathways for proliferation in addition to IGFR signals [35, 37].

In order to evaluate the expression of IGF-IR in EAC and in metastatic sites of ESCC, we analyzed an esophageal cancer tissue microarray immunohistochemically. To assess IGF-IR blockade for both esophageal cancers, histologies ESCC and EAC, we used several strategies including IGF-IR/dns, shIGF-IR, and BMS-536924.

Methods

Materials, cell lines, and recombinant adenovirus vectors

Anti-Akt1(c-20), anti-ERK1(K-23), anti-phospho-ERK1(E-4), anti-IGF-I(G-17), and anti-IGF-IR β (2C8) were purchased from Santa Cruz Biotechnology (Santa Cruz, CA, USA) and anti-phospho-Akt(Ser473) was from Cell-Signaling Technology (Beverly, MA, USA). Anti-IGF-IR(Ab-4) was from Oncogene Research Products (Cambridge, MA, USA) and anti-IGF-II was from Peninsula Laboratories (San Carlos, CA, USA). PI3-K inhibitors, wortmannin and LY294002, p38-MAPK inhibitor SB203580, cisplatin (CDDP), and 5-fluorouracil (5-FU) were purchased from Sigma (St. Louis, MO, USA), and MEK1 inhibitor PD98059 was from Cell Signaling. Recombinant human IGF-I and IGF-II were purchased from R&D systems (Minneapolis, MN, USA) and des(1–3)IGF-I from GroPep (Adelaide, Australia). All human esophageal cancer cell lines (Fig. 1) were obtained from the Japanese Cancer Collection of Research Bioresources Cell Bank (Tokyo, Japan), Riken Bioresource Center Cell Bank (Tsukuba, Japan), and European Collection of Cell Cultures (Salisbury, UK).

Cells were passaged in RPMI1640 and DMEM, both with 10% fetal bovine serum.

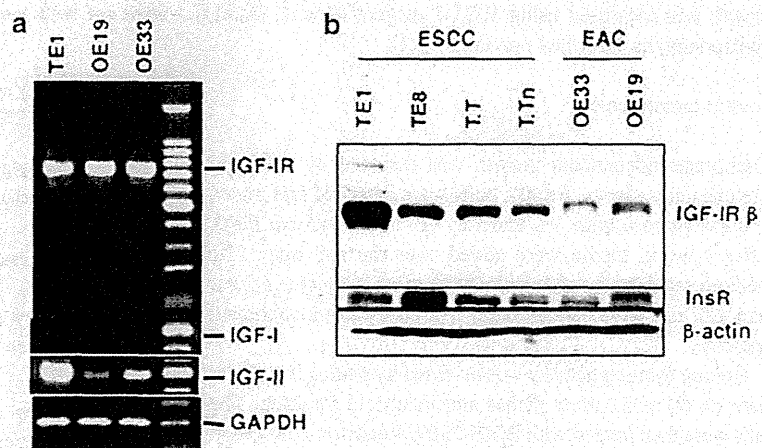
Recombinant adenoviruses expressing IGF-IR/dn (482 and 950 amino acids long, IGF-IR/482st and IGF-IR/950st, Ad-IGF-IR/482st and Ad-IGF-IR/950st, respectively) were generated as described previously by homologous recombination [31]. Recombinant adenovirus vectors expressing shIGF-IR (ad-shIGF-IR) were generated as described previously [38]. An adenovirus expressing β -galactosidase was used as a control (ad-LacZ). Scrambled shRNA adenovirus (ad-Scr) is another control that has a short hairpin sequence but no specific target, also as described previously.

BMS-536924 was kindly provided by Bristol-Myers Squibb (New York, NY, USA). Stock solution was prepared in DMSO and stored at -20°C .

Immunohistochemical analysis

The paraffin-embedded esophageal tissue microarray (ES208) was purchased from US Biomax (Rockville, MD, USA). After deparaffinization, endogenous peroxidase activity was blocked. Antibodies were applied after blocking with normal goat serum. Sections were incubated with the anti-rabbit secondary antibody (Santa Cruz Biotechnology) and a strep tavidin-HRP followed by exposure to the diaminobenzidine tetrahydrochloride substrate (Dako). The sections were counterstained in Mayer's hematoxylin and mounted. Immunostaining signals were scored by two independent observers. Semiquantitative scores were given as the score of the percentage of positive cells plus the score of the staining intensity. The scoring criteria of the percentage of positive cells were as follows: score 0, 0–5% positive cancer cells; score 1, 6–25%; score 2, 26–50%; score 3, 51–75%; score 4, 76–100% positive. The intensity score was given as follows: score 0, no staining; score 1, weak/equivocal; score 2, moderate; score 3,

Fig. 1 The expressions of IGF-axis in esophageal carcinoma cell lines. **a** RT-PCR revealed that three cells express mRNAs of IGF-II and IGF-IR but not IGF-I. **b** Western blotting showed that two EAC and four ESCC cells express both IGF-IR and InsR



strong staining. The final scores were from 0 to 7 and four or more were considered positive.

Reverse transcription PCR

Total RNA from cells was isolated by the acid guanidinium thiocyanate–phenol–chloroform method. Primer sets for the amplification of IGF-I cDNA sequences were 5'-CACTGT CACTGCTAAATTCA-3' and 5'-CTGTGGGCTTGTTGAAA TAA-3' [39]. Primers for IGF-II cDNA were 5'-AGTCGATGC TGGTGCTTCTCA-3' and 5'-GTGGGCGGGGTCTTGG GTGGGTAG-3' [40]. Primers for IGF-IR were 5'-ATTGAG GAGGTCACAGAGAAC-3' and 5'-TTCATATCCTGTTTT GGCCTG-3' [40]. Randomly primed cDNAs were prepared from 1 mg of total RNA by M-MLV reverse transcriptase (Takara, Japan) and amplified by PCR. For amplification of these sequences, 35 cycles of PCR was programmed as follows: 94°C, 30 s; 60°C, 30 s; 72°C, 30 s.

Western blotting

Cells were cultured in serum-free medium for 24 h and then stimulated with 20 ng/ml IGF-I or 10 nM insulin. Cell lysates were prepared as described previously [31]. Equal aliquots of lysate (100 µg) were separated by 4–20% SDS-PAGE and immunoblotted onto polyvinylidene Hybond-P membrane (Amersham, Arlington Heights, IL, USA). Analysis was performed using the indicated antibodies, and bands were visualized by ECL (Amersham).

Assessment of the effect on in vitro cell growth

Tumor cells were grown to 70% confluence in six-well plates and infected with adenovirus. The number of cells was then assayed by Trypan blue staining.

Four thousand cells were seeded into the wells of a 96-well plate, and each was infected with adenovirus or control. Cell growth was measured using WST-1 reagent (Roche, Basel, Switzerland) as described previously [21].

In vitro tumorigenicity

Anchorage-independent growth was assessed by soft agar clonogenicity assays. Briefly, cells were detached and plated in 0.2% agarose with 1% underlay (2×10^4 cells/5-cm dish). After 1 week, media were added over the soft agar. The medium overlay was changed after 1 week. Colonies greater than 125 µm were counted after 3 weeks using a calibrated graticule.

Colony forming activity was assessed by plating 3×10^3 per plate on 60-mm culture dishes and incubated for 24 h. The cells were then treated with BMS-536924 and were incubated for 14 days. After air-drying, cells were fixed with methanol

and stained with Giemsa solution. Colonies containing 50 cells or more were counted.

Measurement of apoptosis

The DNA fragmentation assay was performed as follows: low molecular weight DNA was extracted with 0.5% Triton X-100, 10 nM EDTA, and 10 mM Tris-HCl, pH 7.4, treated with 400 µg/ml RNase A and then proteinase K for 1 h at 37°C, ethanol-precipitated, and subjected to 1% agarose gel electrophoresis. The gels were stained with 1 µg/ml ethidium bromide. Early apoptosis was quantified by staining with Annexin-V-FITC according to the manufacturer's protocol (BD Biosciences) and measured by flow cytometry. Cells undergoing apoptosis showed an increase in Annexin-V binding but excluded propidium iodide. TUNEL assays were performed with in situ apoptosis detection kit (Takara) following the manufacturer's protocol. Caspase-3 colorimetric protease assay was performed following the manufacturer's protocol (Caspase-3 Colorimetric Protease Assay Kit; MBL). In brief, 3×10^6 cells were lysed in 100 µl of chilled cell lysis buffer, and total cell lysates (100 µg) were incubated with 4 mM VETD-pNA Substrate (200 µM final concentration) at 37°C for 1 h. Caspase-3 activity was measured by colorimetric reaction at 405 nm.

First, cancer cells infected with Ad-IGF-IR/dns or Ad-LacZ were induced with 10 mJ/cm² UV light. To assess the efficacy of IGF-IR/dn on chemotherapy-induced apoptosis, tumor cells were treated for 24 h with 1 mM 5-FU or 50 µM cisplatin.

Migration assay

Wounding assays were performed using a modification of the procedure described by Pennisi et al. [41]. Briefly, six-well chambers were prepared by scratching registration marks onto the slide surface. TE1 cells (infected with adenoviruses) were plated, grown normally for 48 h, and starved overnight. Cells were cut with a cell scraper, and five images were captured

Table 1 Summary of immunohistochemical expression of IGF-IR

	IGF-IR (+)		
Normal esophageal mucosa	0/7	0%	<i>p</i> = 0.0111 (Fisher)
Esophageal carcinoma	31/57	54%	
	IGF-IR (+)		
Squamous cell carcinoma	23/34	68%	
Primary sites	15/23	65%	
Metastasized sites	8/11	73%	
Lymph node	6/9	67%	
Skin	2/2	100%	
Adenocarcinoma	8/22	36%	
Adenosquamous carcinoma	0/1	0%	

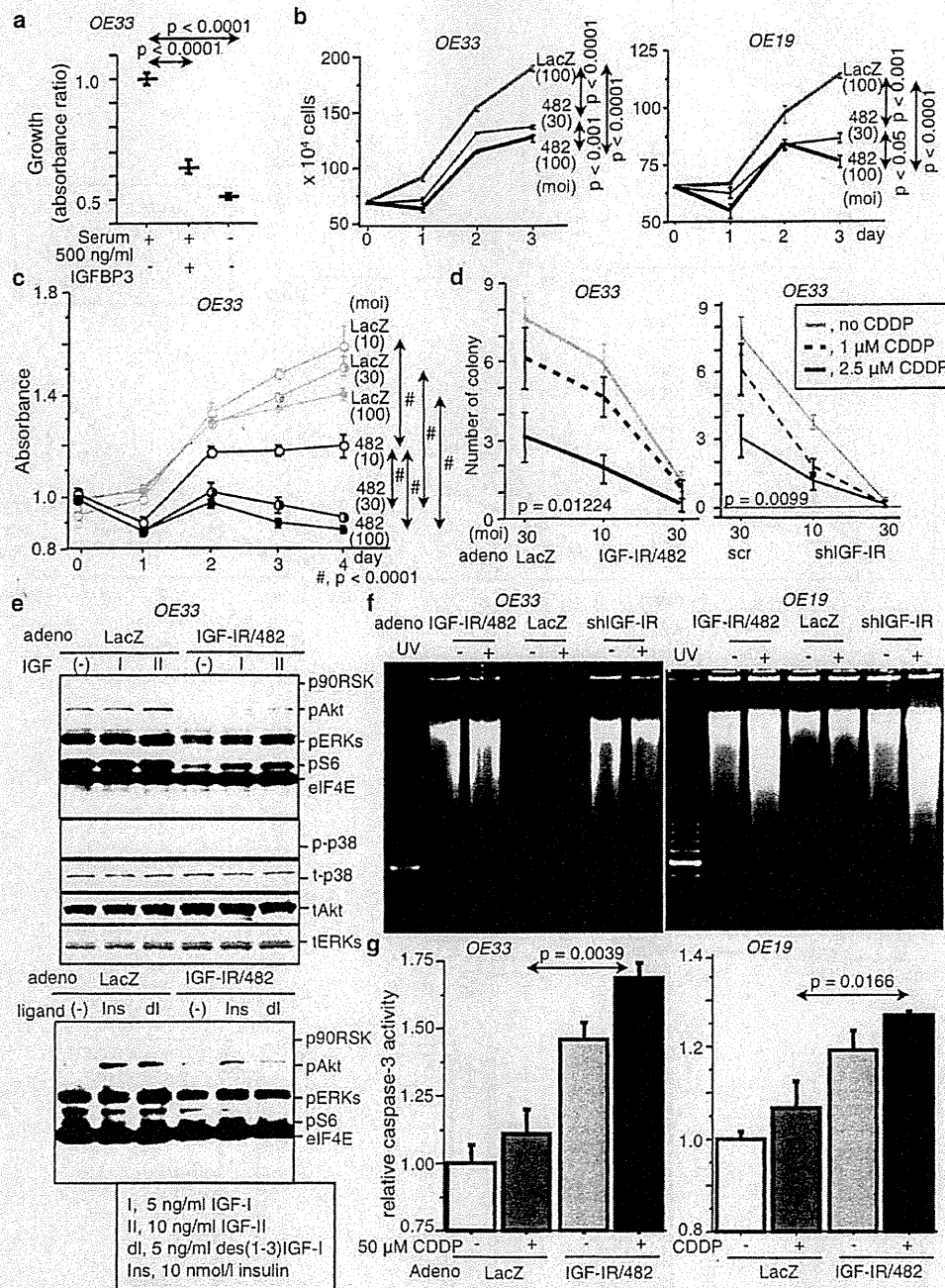


Fig. 2 The effect of IGF-IR on EAC cells. **a** WST-1 assay showed cell growth of OE33. 48 h of culture with/without IGFBP3. **b** Trypan blue assay showed the number of viable cells. **c** WST-1 assay revealed cell proliferation of adenoviruses-infected OE33. **d** Colony formation assays showed the effect of IGF-IR/dn and cisplatin on colony formation. **e**

OE33 was stimulated for 5 min with ligands in serum-free medium. Western blotting showed signal transduction. **f** DNA fragmentation assay detected UV-induced apoptosis. **g** Cells were treated for 24 h with cisplatin. Then, caspase-3 assays were performed

along the cut surface on an Olympus IX-71SIF-2 microscope (Tokyo, Japan) using a $\times 20$ objective. Additional images were

captured 24 h later. For each experiment, the number of migrating cells was counted by two independent observers [41].

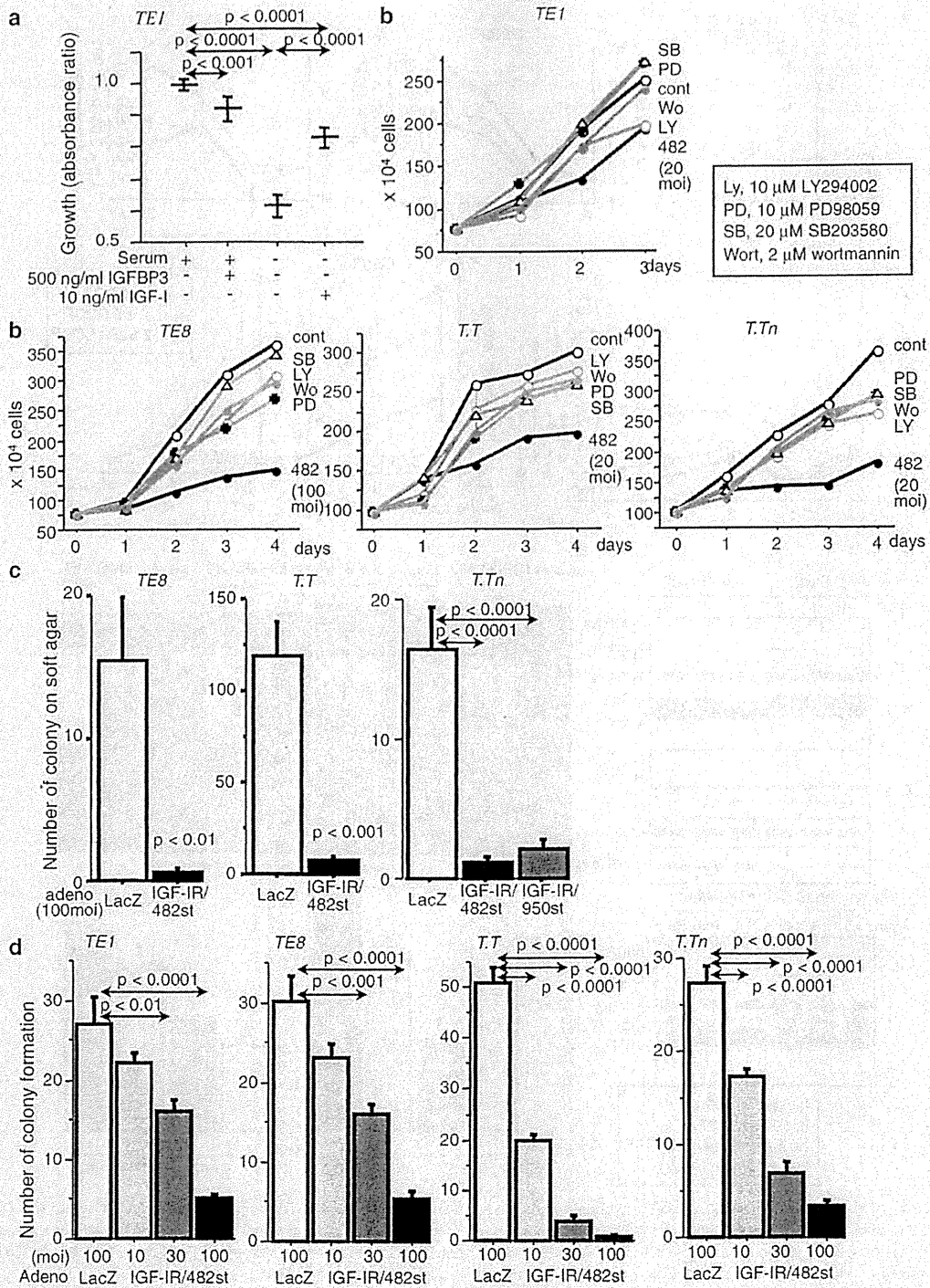


Fig. 3 The effect of IGF-IR on the growth of ESCC. **a** WST-1 assay showed cell growth after 48 h of culture. **b** Trypan blue assay showed the viable cell number of ESCC cells with several inhibitors or IGF-IR 482st. **c** Soft agar assays detected that ad-IGF-IR dns blocked colony formation. **d** Colony formation assay showed the effect of IGF-IR 482st on colony number

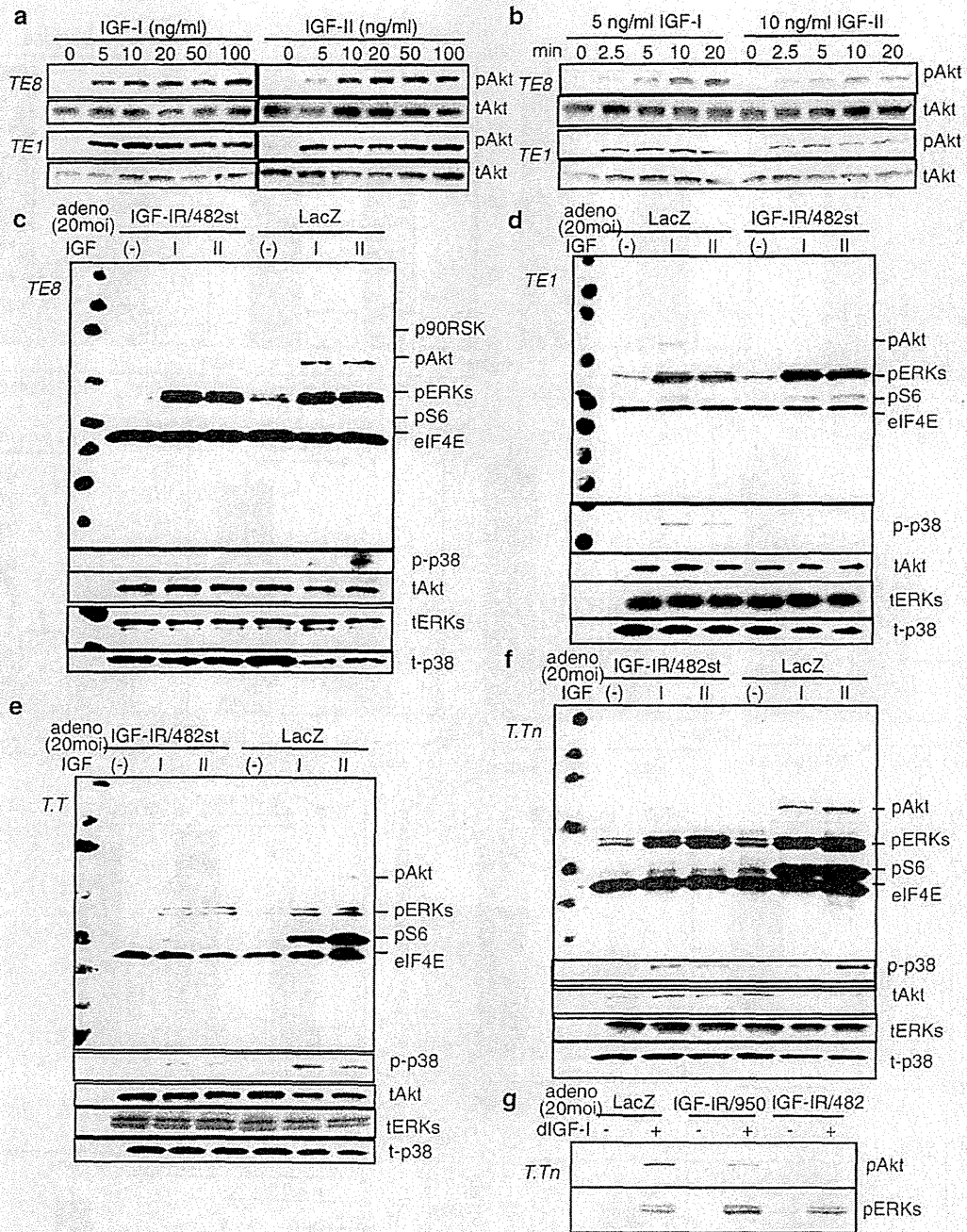


Fig. 4 The down-stream signals from IGF-IR by Western blotting. **a** Both TES and TE1 cells were stimulated for 5 min with IGFs, and then whole cell lysates were extracted. **b** Both cells were stimulated from 0 to

20 min with IGFs. **c–f** Four cell lines infected with adenoviruses were stimulated for 5 min with IGFs. **g** Adenoviruses-infected T.Tn cells were stimulated for 5 min with 5 ng/ml des(1–3)IGF-I

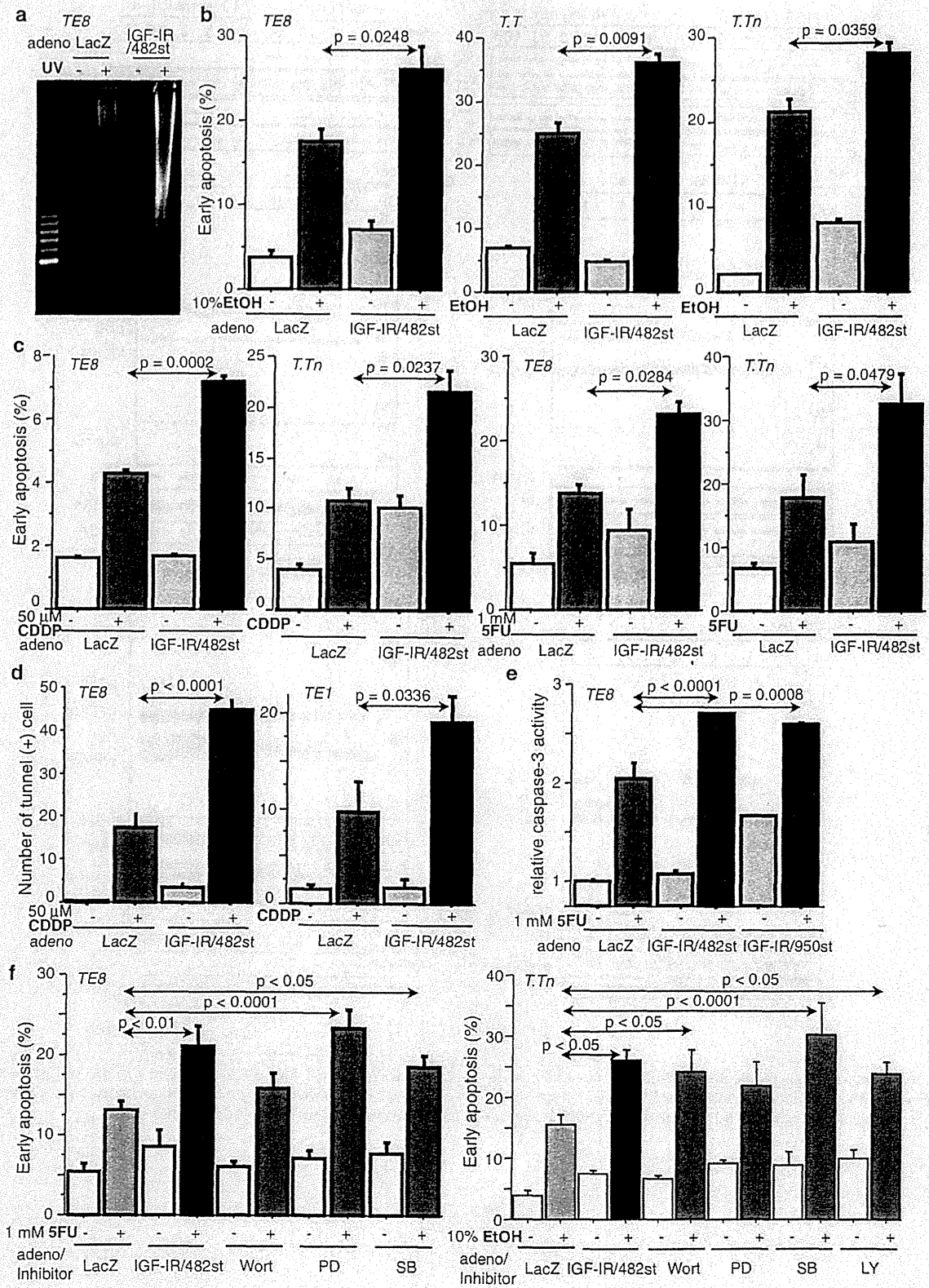


Fig. 5 Apoptotic induction in ESCC. **a** DNA fragmentation assay showed UV-induced apoptosis. **b** Annexin-V assay revealed ethanol (EtOH)-induced early apoptosis. **c** Cells were treated with chemotherapy for 24 h. Then, annexin-V assay detected early apoptosis. **d** TUNEL assay revealed cisplatin-induced apoptosis. **e** Caspase-3 assays demonstrated 5-FU-induced apoptosis. **f** Annexin-V assay detected early apoptosis in ESCC cells with several inhibitors or IGF-IR/dn

Statistical analysis

Statistical significance of difference between IGF-IR expressions was determined by Fisher's exact probability test.

The results of *in vitro* experiments are presented as means \pm SE for each sample. The statistical significance of difference was determined by one-way ANOVA or two-factor factorial ANOVA. *P* values less than 0.05 were considered to indicate statistical significance.

Results

The expressions of IGF axis in esophageal cancers

In the previous paper, we reported that many ESCC cell lines express both IGF-IR and IGF-II, but a few cells express IGF-I [21]. We evaluated the mRNA expression of both IGF-IR and its ligands in two esophageal adenocarcinoma cell lines using RT-PCR (Fig. 1a). Like the control ESCC, TE1, both IGF-IR and IGF-II messages were identified. However, none expressed IGF-I mRNA. Then, we assessed the protein expressions of both IGF-IR and InsR using Western blotting (Fig. 1b). Both receptors were expressed in the two adenocarcinoma cell lines, and those expression levels were less than those of four ESCC lines.

Tissue array data showed that IGF-IR was expressed in cancer tissue more frequently than the normal mucosa (54 and 0%, respectively, $p = 0.0111$; Table 1). The expression of IGF-IR tended to be lower in EAC compared to ESCC (eight out of 22 primary EAC and 15 of 23 primary EACC). In ESCC, the IGF-IR expression ratio of metastatic sites tended to be higher, but not significantly so than that of the primary sites (73 and 65%, respectively).

These results indicate that both ligands and receptors are expressed in many esophageal carcinomas, implying that the IGF/IGF-IR axis might play some role in not only ESCC but also EAC.

The effect of IGF-IR blockade on EAC cell lines

The natural inhibitor of IGFs, IGFBP3, suppressed the growth of OE33 to a similar level as that observed when they are cultured in serum-free media (Fig. 2a). Ad-IGF-IR/dn could reduce *in vitro* cell growth of both OE33 and OE19 (Fig. 2b).

WST-1 assay showed that IGF-IR/dn blocked the growth of OE33 on plastic in a dose-dependent manner (Fig. 2c). IGF-IR/dn also reduced the number of colonies in a dose-dependent manner and strengthened the suppressive effect of cisplatin on colony formation of OE33 (Fig. 2d). Moreover, silencing IGF-IR by ad-shIGF-IR reduced colony number in a dose-dependent manner and enhanced cisplatin-induced suppression of colony formation in OE33 tumor cells.

Signaling analysis by Western blotting showed that ad-IGF-IR/dn could block both IGF-I- and IGF-II-induced phosphorylation of Akt in OE33 (Fig. 2e). IGF-IR/dn also reduced phosphorylation of both ERKs and S6. IGF-IR/dn could block des(1–3)IGF-I induced downstream signal transduction but not insulin-derived signals.

DNA fragmentation assays showed that IGF-IR/dn induced apoptosis in OE33 (Fig. 2f). In addition, IGF-IR/dn could enhance UV-induced apoptosis in OE33. The results were confirmed in another EAC cell, OE19. Moreover, ad-shIGF-IR showed almost the same effect as ad-IGF-IR/dn in both cell lines. Caspase-3 assays revealed that IGF-IR/dn up-regulated cisplatin-induced apoptosis in both OE33 and OE19 (Fig. 2g).

The results indicate that blockade of IGF-IR suppressed growth and colony formation and induced apoptosis in EAC cells.

The effect of IGF-IR/dn on ESCC cell growth

In the previous report, we showed the effects of IGF-IR/dn mainly for the ESCC cell line, TE1, so here we assessed the effect of IGF-IR blockade on several other ESCC cell lines as well [21].

IGF-BP3 suppressed proliferation of TE1 cultured in conditioned media with serum (Fig. 3a). The cell growth was markedly suppressed in the media without serum and IGF-I partially overcame this suppression. IGF-IR/482st suppressed *in vitro* growth of other ESCC cell lines, TE8, T.T, and T.Tn, in addition to TE1 (Fig. 3b). In every cell line, IGF-IR/dn was the most effective for growth suppression among tested inhibitors, wortmannin, LY294002, PD98059, and SB203580.

Soft agar assays revealed that IGF-IR/482st inhibited *in vitro* tumorigenicity in three ESCC cells: TE8, T.T, and T.Tn (Fig. 3c). In addition to IGF-IR/482st, another dominant negative, IGF-IR/950st, suppressed the carcinogenicity of T.Tn. Colony formation assays showed that IGF-IR/482st suppressed colony formation in a dose-dependent manner (Fig. 3d).

IGF-IR/dn blocked signal transduction in ESCC cell lines

Both IGF-I and IGF-II could induce phosphorylation of Akt-1 in both TE1 and TE8 cells (Fig. 4a). Effective concentrations of IGF-I were from 5 to 100 ng/ml, and IGF-II was also effective from 5 to 100 ng/ml. In both cell lines, 5 ng/ml IGF-I and 10 ng/ml IGF-II resulted in the activation of Akt-1 in 2.5 to 20 min (Fig. 4b).

Both Akt-1 and ERKs were phosphorylated by the ligands, IGF-I and IGF-II, in TE8 infected with control virus; however, Akt activation was blocked in the cells infected with IGF-IR/482st (Fig. 4c). The same results were observed in the other cell lines, TE1, T.T, and T.Tn (Fig. 4d–f). In the latter two cell lines, IGF-IR/482st inhibited the ligand-induced phosphorylation of S6. In T.Tn, des(1–3)IGF-I phosphorylated both downstream of Akt-1 and ERKs (Fig. 4g). In addition to IGF-IR/482st, IGF-IR/950st blocked phosphorylation of Akt-1 but not ERK in T.Tn.

Up-regulation of apoptotic induction on ESCC cell lines by IGF-IR/dn

DNA fragmentation assays revealed that the expression of IGF-IR/dn induced up-regulation of UV-induced apoptosis in TE8 (Fig. 5a). Annexin-V assays showed that IGF-IR/dn up-regulated 10% ethanol-induced early apoptosis in three cell lines, TE8, T.T, and T.Tn (Fig. 5b). Moreover, IGF-IR/dn increased apoptosis induced by both chemotherapies (cisplatin and 5-FU) in both TE8 and T.Tn (Fig. 5c). TUNEL assays confirmed the result that IGF-IR/482st enhanced cisplatin-induced apoptosis in both TE8 and TE1 (Fig. 5d). Both IGF-IR/482st and IGF-IR/950st up-regulated 5-FU-induced apoptosis in TE8 as detected by caspase-3 assays (Fig. 5e).

Both PD98059 and SB203580 up-regulated 5-FU-induced apoptosis in TE8 but wortmannin could not, as detected by annexin-V assays (Fig. 5f). Three inhibitors, wortmannin, LY294002, and SB203580, enhanced 10% ethanol-induced early apoptosis in T.Tn, but PD98059 did not.

The effect of IGF-IR on the migration of ESCC cell lines

T.T cells exhibited high mobility when cultured on plastic in a conditioned medium, but migration was reduced when these cells were cultured without serum (Fig. 6a). IGF-I stimulated the mobility of T.T in a dose-dependent manner, and IGF-IR/482st

reduced the migration ability of T.T cultured in conditioned media with FCS. The results indicated that the IGF/IGF-IR axis might play a part in the mobility of ESCC.

Both IGF-IR/dns suppressed the migration of T.T significantly (Fig. 6b). Moreover, both forms of IGF-IR/dn reduced the mobility of the other two cell lines, TE8 and T.Tn.

The effect of BMS-536924 for both types of esophageal carcinoma

The IGF-IR/InsR inhibitor, BMS-536924, blocked IGF-I-induced IGF-IR auto-phosphorylation and its down-stream signals, pAkt and pERKs, in an ESCC cell, TE8 (Fig. 7a). The same results were detected in an EAC cell, OE33. Compared to IGF-IR/dn, BMS-536924 could also block the phosphorylation of ERKs clearly in both cell lines.

BMS-536924 inhibited insulin-induced InsR autophosphorylation and activation of not only Akt but also ERKs in both cell types (Fig. 7b), unlike IGF-IR/482st and IGF-IR/950st.

The kinase inhibitor suppressed colony formation of TE8 completely and blocked that of OE33 in a dose-dependent manner (Fig. 7c). Caspase-3 assay showed that BMS-536924 enhanced 5FU-induced apoptosis in a dose-dependent manner (Fig. 7d).

The results indicate that IGF-IR target therapy might be a candidate strategy for both types of esophageal carcinomas.

Discussion

We show here that EAC cell lines express both IGF-II and IGF-IR, but not IGF-I, similar to ESCC. We also showed that IGF-IR was expressed in metastatic deposits in addition to the primary ESCC tumors. EAC expressed IGF-IR but tended to do so less frequently than ESCC. These results are compatible with the recent report in which higher IGF-IR protein expressions were observed in ESCC cells compared with EAC cells

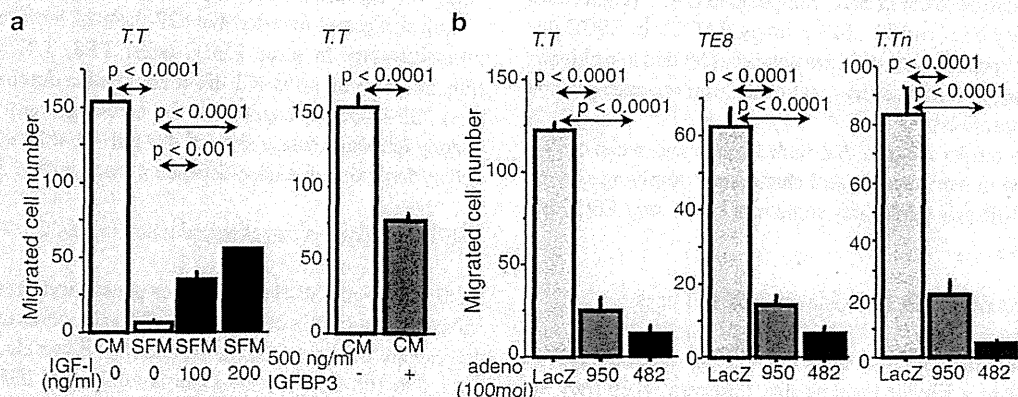


Fig. 6 The effect of IGF axis on migration of ESCC assessed by wounding assays. **a** TT cells were cultured with or without FBS ± IGF-I for 24 h and were cultured with/without IGF-IR/482st. **b** Migration assay was performed for adenoviruses-infected cells

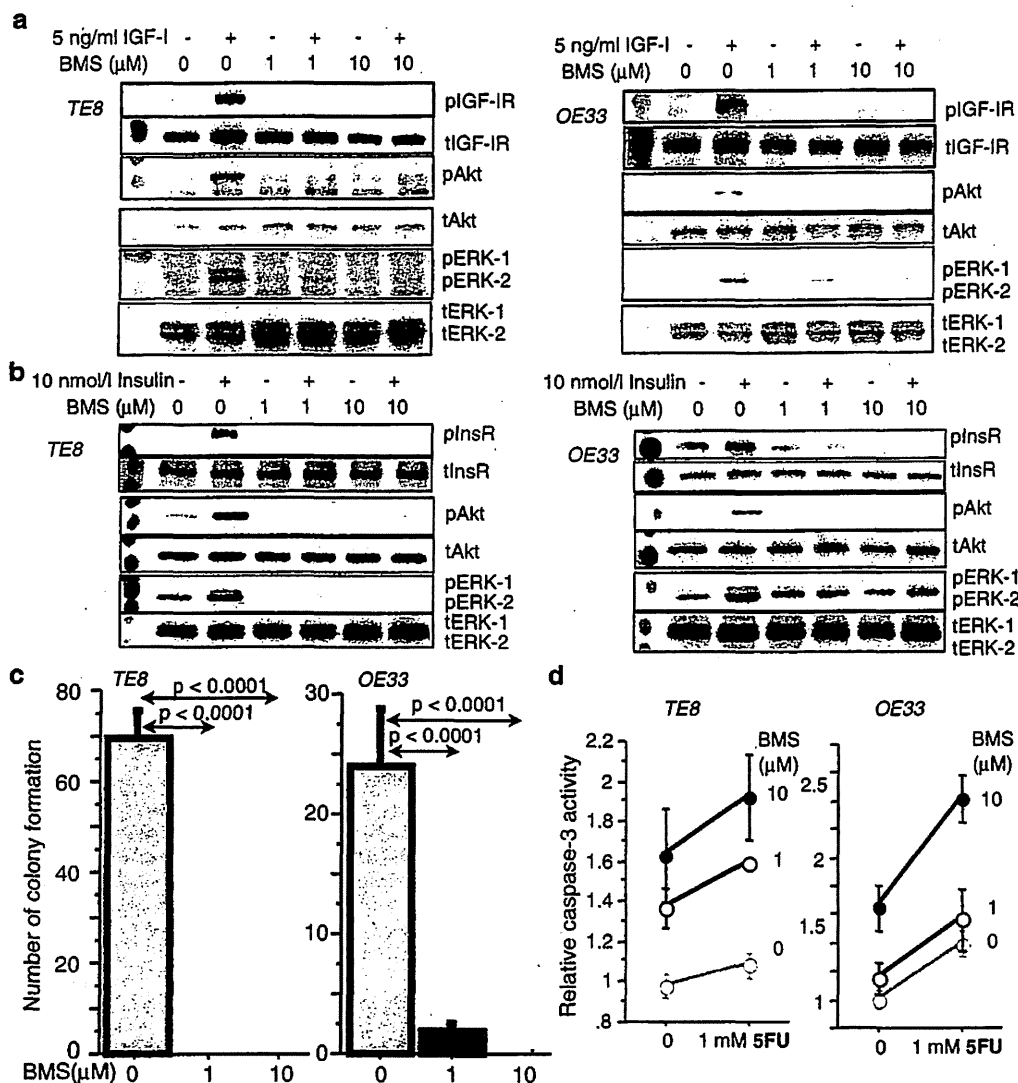


Fig. 7 The effect of BMS-536924 on both ESCC, TE8 and EAC, OE33. **a** After the cell was cultured with several amounts of BMS-536924, cells were stimulated for 5 min with IGF-I. Then Western blotting was performed. **b** After BMS-536924 treatment, the cells were stimulated

for 5 min with insulin. **c** Colony formation assay revealed that this inhibitor reduced the number of colonies. **d** Caspase-3 assay revealed 5-FU-induced apoptosis

[22]. IGF-IR expression could also be useful as a novel prognostic marker for EAC [42]. Thus, IGF-IR might be a therapeutic target for many esophageal carcinomas.

In our previous study, we demonstrated that the IGF-IR axis is not only frequently overexpressed in ESCC and is associated with poor outcome but that it is also an exciting potential target for therapeutic intervention in this specific disease [21]. One of the possible mechanisms of IGF-IR overexpression in ESCC is that the miR-375 is downregulated by promoter methylation as miR-375 has a strong tumor-suppressive effect through inhibiting the expression of IGF-IR [43].

In this study, ad-IGF-IR/dn suppressed in vitro tumorigenicity, survival, and migration of both ESCC and EAC cells and also enhanced chemotherapy-induced apoptosis. In several cell lines representative of the two esophageal cancer subtypes (that express different patterns of IGF-IR and IGF ligand expression), the effects of ad-IGF-IR/dns were very similar, suggesting that IGF-IR targeting might have therapeutic potency for a variety of patients with esophageal carcinomas. This is also supported by the results from the multiple different inhibitors used in this study: IGF-IR/dns, shIGF-IR, and BMS-536924 all showed tumor-suppressive effects for esophageal carcinomas.

We showed here that IGF-IR blockade enhanced the effect of chemotherapy for esophageal carcinoma. It has been reported that IGF axis is responsible for chemoresistance. IGF-I inhibits 5-FU-induced apoptosis through increasing survivin levels, which prevents Smac/DIABLO release and blocks the activation of caspases [44].

As IGF-IR is closely related to the InsR [5], it is important to avoid adverse effects related to co-inhibition of the InsR and perhaps ideally that any strategy designed to block IGF-IR would have a high degree of specificity for IGF-IR compared to InsR. We show here that ad-IGF-IR/dn does not suppress insulin-induced Akt-phosphorylation, indicating a high degree of receptor selectivity. Thus, our ad-IGF-IR/dn strategy has the distinct potential advantage of blocking both IGF ligand signals, being independent of IGF-BPs, interrupting signaling between IGF-IR and Akt-1, and not affecting insulin receptor signaling.

On the other hand, InsR could also work as accelerator of proliferation in cancer cells. Thus, the dual targeting TKI might have some advantages to block cancer progression. However, it was reported that insulin enhances anticancer functions of 5-FU when it is treated before 5-FU for the appropriate time in esophageal and colonic cancer cell lines [45]. As there is discrepancy in the effects of insulin on esophageal cancers, further analysis will be needed.

Several humanized mAbs and TKIs for IGF-IR have been generated, some of which are now in clinical studies [26–28]. This study provides support for testing of these therapies in esophageal cancer. Although some phase III studies for IGF-IR mAbs (but not TKIs) were withdrawn, others including a dual targeting TKI for IGF-IR/InsR, BMS-754807, continue in clinical trials [46].

It is reported that the insensitivity of TE1 to an IGF-IR TKI NVP-AEW541 occurred through maintained ras/ERK activity. Moreover, the transduction of mutant ras reduced the sensitivity of TE-1 cells to NVP-AEW541 [47]. However, these results are different from our reported data that NVP-AEW541 inhibited the cancer progression of four gastrointestinal cancer cell lines, including TE-1 [48]. It would be interesting to analyze the reasons for the differences between these studies.

In addition, we have reported an IGF-IR mAb, figitumumab (CP-751,871), that could suppress gastrointestinal cancers expressing k-ras mutations, including TE-1 [49]. Further studies are needed to assess the effect and mechanism of IGF-IR blockade in k-ras mutated cancers.

In this study, we showed that a dual IGF-IR/InsR TKI is effective for both types of human esophageal carcinomas. Several advantages of dual targeting strategies for esophageal carcinoma have been reported. TAE226, a dual tyrosine kinase inhibitor for FAK and IGF-IR, could suppress Barrett's EAC [50]. The combination of Her2 mAb, trastuzumab, and IGF-IR mAb, α -IR3, was more effective in inhibiting *in vitro* proliferation of EAC than treatment with either agent alone [42]. Thus,

combined targeting of the IGF-IR axis with these other tumor drivers may show significant therapeutic promise.

IGF-IR might therefore be important in the progression of esophageal carcinomas, and IGF-IR target therapies might be candidate options for patients with both types of esophageal cancers.

Acknowledgments This work was supported by grants-in-aid from the Ministry of Education, Culture, Sports, Science, and Technology and from the Ministry of Health, Labor and Welfare, Japan. This work was also supported by a grant from the Japanese Society of Strategies for Cancer Research and Therapy.

Conflicts of Interest None

References

- Enzinger PC, Mayer RJ. Esophageal cancer. *N Engl J Med*. 2003;349:2241–52.
- Sagar PM, Gauperaa T, Sue-Ling H, McMahon MJ, Johnston D. An audit of the treatment of cancer of the oesophagus. *Gut*. 1994;35:941–5.
- Baserga R. Oncogenes and the strategy of growth factors. *Cell*. 1994;79:927–30.
- Sell C, Rubini M, Rubin R, Liu JP, Efstratiadis A, Baserga R. Simian virus 40 large tumor antigen is unable to transform mouse embryonic fibroblasts lacking type 1 insulin-like growth factor receptor. *Proc Natl Acad Sci U S A*. 1993;90:11217–21.
- Ullrich A, Gray A, Tam AW, Yang-Feng T, Tsubokawa M, Collins C, et al. Insulin-like growth factor i receptor primary structure: comparison with insulin receptor suggests structural determinants that define functional specificity. *Embo J*. 1986;5:2503–12.
- Yu H, Rohan T. Role of the insulin-like growth factor family in cancer development and progression. *J Natl Cancer Inst*. 2000;92:1472–89.
- Remacle-Bonnet M, Garrouste F, el Atiq F, Roccabianca M, Marvaldi J, Pommier G. Des-(1–3)-igf-i, an insulin-like growth factor analog used to mimic a potential igf-ii autocrine loop, promotes the differentiation of human colon-carcinoma cells. *Int J Cancer*. 1992;52:910–7.
- Ma J, Pollak MN, Giovannucci E, Chan JM, Tao Y, Hennekens CH, et al. Prospective study of colorectal cancer risk in men and plasma levels of insulin-like growth factor (igf)-i and igf-binding protein-3. *J Natl Cancer Inst*. 1999;91:620–5.
- Harper J, Burns JL, Foulstone EJ, Pignatelli M, Zaina S, Hassan AB. Soluble igf2 receptor rescues apc(min/+) intestinal adenoma progression induced by igf2 loss of imprinting. *Cancer Res*. 2006;66:1940–8.
- Chan JM, Stampfer MJ, Giovannucci E, Gann PH, Ma J, Wilkinson P, et al. Plasma insulin-like growth factor-i and prostate cancer risk: a prospective study. *Science*. 1998;279:563–6.
- Liu JP, Baker J, Perkins AS, Robertson EJ, Efstratiadis A. Mice carrying null mutations of the genes encoding insulin-like growth factor i (igf-1) and type 1 igf receptor (igf1r). *Cell*. 1993;75:59–72.
- Vinayek R, Pichney LS, Tantry U, Dutta SK, Resau J, Vengurlekar S. Characterization of insulin-like growth factor i receptors in human esophageal epithelial cells. *Am J Physiol*. 1994;267:G105–14.
- Qureshi FG, Tchorzewski MT, Duncan MD, Harmon JW. Egf and igf-i synergistically stimulate proliferation of human esophageal epithelial cells. *J Surg Res*. 1997;69:354–8.
- Tchorzewski MT, Qureshi FG, Duncan MD, Duncan KL, Saini N, Harmon JW. Role of insulin-like growth factor-i in esophageal mucosal healing processes. *J Lab Clin Med*. 1998;132:134–41.
- Costigan DC, Guyda HJ, Posner BI. Free insulin-like growth factor i (igf-i) and igf-ii in human saliva. *J Clin Endocrinol Metab*. 1988;66:1014–8.

16. Mori M, Inoue H, Shiraishi T, Mimori K, Shibuta K, Nakashima H, et al. Relaxation of insulin-like growth factor 2 gene imprinting in esophageal cancer. *Int J Cancer*. 1996;68:441–6.
17. Liu YC, Leu CM, Wong FH, Fong WS, Chen SC, Chang C, et al. Autocrine stimulation by insulin-like growth factor i is involved in the growth, tumorigenicity and chemoresistance of human esophageal carcinoma cells. *J Biomed Sci*. 2002;9:665–74.
18. Ouban A, Muraca P, Yeatman T, Coppola D. Expression and distribution of insulin-like growth factor-I receptor in human carcinomas. *Hum Pathol*. 2003;34:803–8.
19. Chen SC, Chou CK, Wong FH, Chang CM, Hu CP. Overexpression of epidermal growth factor and insulin-like growth factor-i receptors and autocrine stimulation in human esophageal carcinoma cells. *Cancer Res*. 1991;51:1898–903.
20. Takaoka M, Harada H, Andl CD, Oyama K, Naomoto Y, Dempsey KL, et al. Epidermal growth factor receptor regulates aberrant expression of insulin-like growth factor-binding protein 3. *Cancer Res*. 2004;64:7711–23.
21. Imsumran A, Adachi Y, Yamamoto H, Li R, Wang Y, Min Y, et al. Insulin-like growth factor-i receptor as a marker for prognosis and a therapeutic target in human esophageal squamous cell carcinoma. *Carcinogenesis*. 2007;28:947–56.
22. Doyle SL, Donohoe CL, Finn SP, Howard JM, Lithander FE, Reynolds JV, et al. Igf-1 and its receptor in esophageal cancer: association with adenocarcinoma and visceral obesity. *Am J Gastroenterol*. 2012;107:196–204.
23. Donohoe CL, Doyle SL, McGarrigle S, Cathcart MC, Daly E, O'Grady A, et al. Role of the insulin-like growth factor I axis and visceral adiposity in oesophageal adenocarcinoma. *Br J Surg*. 2012;99:387–96.
24. Surmacz E. Growth factor receptors as therapeutic targets: strategies to inhibit the insulin-like growth factor i receptor. *Oncogene*. 2003;22:6589–97.
25. Wu JD, Odman A, Higgins LM, Haugk K, Vessella R, Ludwig DL, et al. In vivo effects of the human type i insulin-like growth factor receptor antibody a12 on androgen-dependent and androgen-independent xenograft human prostate tumors. *Clin Cancer Res*. 2005;11:3065–74.
26. Cohen BD, Baker DA, Soderstrom C, Tkalcevic G, Rossi AM, Miller PE, et al. Combination therapy enhances the inhibition of tumor growth with the fully human anti-type I insulin-like growth factor receptor monoclonal antibody cp-751,871. *Clin Cancer Res*. 2005;11:2063–73.
27. Garcia-Echeverria C, Pearson MA, Marti A, Meyer T, Mestan J, Zimmermann J, et al. In vivo antitumor activity of nvp-aew541—a novel, potent, and selective inhibitor of the igf-1r kinase. *Cancer Cell*. 2004;5:231–9.
28. Mitsiades CS, Mitsiades NS, McMullan CJ, Poulaki V, Shringarpure R, Akiyama M, et al. Inhibition of the insulin-like growth factor receptor-1 tyrosine kinase activity as a therapeutic strategy for multiple myeloma, other hematologic malignancies, and solid tumors. *Cancer Cell*. 2004;5:221–30.
29. Prager D, Li HL, Asa S, Melmed S. Dominant negative inhibition of tumorigenesis in vivo by human insulin-like growth factor i receptor mutant. *Proc Natl Acad Sci U S A*. 1994;91:2181–5.
30. D'Ambrosio C, Ferber A, Resnicoff M, Baserga R. A soluble insulin-like growth factor i receptor that induces apoptosis of tumor cells in vivo and inhibits tumorigenesis. *Cancer Res*. 1996;56:4013–20.
31. Adachi Y, Lee CT, Coffee K, Yamagata N, Ohn JE, Park KH, et al. Effects of genetic blockade of the insulin-like growth factor receptor in human colon cancer cell lines. *Gastroenterology*. 2002;123:1191–204.
32. Min Y, Adachi Y, Yamamoto H, Ito H, Itoh F, Lee CT, et al. Genetic blockade of the insulin-like growth factor-i receptor: a promising strategy for human pancreatic cancer. *Cancer Res*. 2003;63:6432–41.
33. Lee CT, Park KH, Adachi Y, Seol JY, Yoo CG, Kim YW, et al. Recombinant adenoviruses expressing dominant negative insulin-like growth factor-i receptor demonstrate antitumor effects on lung cancer. *Cancer Gene Ther*. 2003;10:57–63.
34. Min Y, Adachi Y, Yamamoto H, Imsumran A, Arimura Y, Endo T, et al. Insulin-like growth factor i receptor blockade enhances chemotherapy and radiation responses and inhibits tumour growth in human gastric cancer xenografts. *Gut*. 2005;54:591–600.
35. Ohashi H, Adachi Y, Yamamoto H, Taniguchi H, Noshio K, Suzuki H, et al. Insulin-like growth factor receptor expression is associated with aggressive phenotypes and has therapeutic activity in biliary tract cancers. *Cancer Sci*. 2012;103:252–61.
36. Wang Y, Adachi Y, Imsumran A, Yamamoto H, Piao W, Li H, et al. Targeting for insulin-like growth factor-i receptor with short hairpin RNA for human digestive/gastrointestinal cancers. *J Gastroenterol*. 2010;45:159–70.
37. Wittman M, Carboni J, Attar R, Balasubramanian B, Balimane P, Brassil P, et al. Discovery of a (1h-benzoimidazol-2-yl)-1h-pyridin-2-one (bms-536924) inhibitor of insulin-like growth factor i receptor kinase with in vivo antitumor activity. *J Med Chem*. 2005;48:5639–43.
38. Lee YJ, Imsumran A, Park MY, Kwon SY, Yoon HI, Lee JH, et al. Adenovirus expressing shRNA to igf-1r enhances the chemosensitivity of lung cancer cell lines by blocking igf-1 pathway. *Lung Cancer*. 2007;55:279–86.
39. Hana V, Murphy LJ. Expression of insulin-like growth factors and their binding proteins in the estrogen responsive Ishikawa human endometrial cancer cell line. *Endocrinology*. 1994;135:2511–6.
40. Quinn KA, Treston AM, Unsworth EJ, Miller MJ, Vos M, Grimley C, et al. Insulin-like growth factor expression in human cancer cell lines. *J Biol Chem*. 1996;271:11477–83.
41. Pennisi PA, Barr V, Nunez NP, Stannard B, Le Roith D. Reduced expression of insulin-like growth factor i receptors in mcf-7 breast cancer cells leads to a more metastatic phenotype. *Cancer Res*. 2002;62:6529–37.
42. Kalinina T, Bockhorn M, Kaifi JT, Thielges S, Gungor C, Effenberger KE, et al. Insulin-like growth factor-1 receptor as a novel prognostic marker and its implication as a cotarget in the treatment of human adenocarcinoma of the esophagus. *Int J Cancer*. 2010;127:1931–40.
43. Kong KL, Kwong DL, Chan TH, Law SY, Chen L, Li Y, et al. Micrometa-375 inhibits tumour growth and metastasis in oesophageal squamous cell carcinoma through repressing insulin-like growth factor I receptor. *Gut*. 2012;61:33–42.
44. Juan HC, Tsai HT, Chang PH, Huang CY, Hu CP, Wong FH. Insulin-like growth factor I mediates 5-fluorouracil chemoresistance in esophageal carcinoma cells through increasing survivin stability. *Apoptosis*. 2011;16:174–83.
45. Zou K, Ju JH, Xie H. Pretreatment with insulin enhances anticancer functions of 5-fluorouracil in human esophageal and colonic cancer cells. *Acta Pharmacol Sin*. 2007;28:721–30.
46. Carboni JM, Wittman M, Yang Z, Lee F, Greer A, Hurlburt W, et al. Bms-754807, a small molecule inhibitor of insulin-like growth factor-1r/ir. *Mol Cancer Ther*. 2009;8:3341–9.
47. Bao XH, Takaoka M, Hao HF, Wang ZG, Fukazawa T, Yamatsuji T, et al. Esophageal cancer exhibits resistance to a novel igf-1r inhibitor nvp-aew541 with maintained ras-MAPK activity. *Anticancer Res*. 2012;32:2827–34.
48. Piao W, Wang Y, Adachi Y, Yamamoto H, Li R, Imsumran A, et al. Insulin-like growth factor-i receptor blockade by a specific tyrosine kinase inhibitor for human gastrointestinal carcinomas. *Mol Cancer Ther*. 2008;7:1483–93.
49. Li M, Li H, Adachi Y, Yamamoto H, Ohashi H, Taniguchi H, et al. The efficacy of igf-i receptor monoclonal antibody against human gastrointestinal carcinomas is independent of k-ras mutation status. *Clin Cancer Res*. 2011;17:5048–59.
50. Watanabe N, Takaoka M, Sakurama K, Tomono Y, Hatakeyama S, Ohmori O, et al. Dual tyrosine kinase inhibitor for focal adhesion kinase and insulin-like growth factor-i receptor exhibits anticancer effect in esophageal adenocarcinoma in vitro and in vivo. *Clin Cancer Res*. 2008;14:4631–9.

WJG 20th Anniversary Special Issues (8): Gastric cancer**An updated review of gastric cancer in the next-generation sequencing era: Insights from bench to bedside and *vice versa***

Hiroyuki Yamamoto, Yoshiyuki Watanabe, Tadateru Maehata, Ryo Morita, Yoshihito Yoshida, Ritsuko Oikawa, Shinya Ishigooka, Shun-ichiro Ozawa, Yasumasa Matsuo, Kosuke Hosoya, Masaki Yamashita, Hiroaki Taniguchi, Katsuhiko Noshō, Hiromu Suzuki, Hiroshi Yasuda, Yasuhisa Shinomura, Fumio Itoh

Hiroyuki Yamamoto, Yoshiyuki Watanabe, Tadateru Maehata, Ryo Morita, Yoshihito Yoshida, Ritsuko Oikawa, Shinya Ishigooka, Shun-ichiro Ozawa, Yasumasa Matsuo, Kosuke Hosoya, Masaki Yamashita, Hiroshi Yasuda, Fumio Itoh, Division of Gastroenterology and Hepatology, Department of Internal Medicine, St. Marianna University School of Medicine, Kawasaki 216-8511, Japan

Hiroaki Taniguchi, Division of Cancer Cell Research, Institute of Medical Science, University of Tokyo, Tokyo 108-8639, Japan
Katsuhiko Noshō, Yasuhisa Shinomura, Department of Gastroenterology, Rheumatology and Clinical Immunology, Sapporo Medical University School of Medicine, Sapporo 060-8543, Japan
Hiromu Suzuki, Department of Molecular Biology, Sapporo Medical University School of Medicine, Sapporo 060-8556, Japan

Author contributions: Yamamoto H conceived the topic, reviewed the literature, and prepared the manuscript; Watanabe Y, Maehata T, Morita R, Yoshida Y, Oikawa R, Ishigooka S, Ozawa S, Matsuo Y, Hosoya K, Yamashita M, Taniguchi H, Noshō K, and Suzuki H reviewed and analyzed the literature; Yasuda H, Shinomura Y and Itoh F provided intellectual support.

Supported by Grants-in-Aid for Scientific Research from the Ministry of Education, Culture, Sports, Science and Technology of Japan

Correspondence to: Hiroyuki Yamamoto, MD, FJSM, PhD, Division of Gastroenterology and Hepatology, Department of Internal Medicine, St. Marianna University School of Medicine, Sugo 2-16-1 Miyamae, Kawasaki 216-8511, Japan. h-yama@marianna-u.ac.jp

Telephone: +81-44-9778111 Fax: +81-44-9762282

Received: October 28, 2013 Revised: January 13, 2014

Accepted: March 7, 2014

Published online: April 14, 2014

cancer-related death worldwide. There is an increasing understanding of the roles that genetic and epigenetic alterations play in GCs. Recent studies using next-generation sequencing (NGS) have revealed a number of potential cancer-driving genes in GC. Whole-exome sequencing of GC has identified recurrent somatic mutations in the chromatin remodeling gene *ARID1A* and alterations in the cell adhesion gene *FAT4*, a member of the cadherin gene family. Mutations in chromatin remodeling genes (*ARID1A*, *MLL3* and *MLL*) have been found in 47% of GCs. Whole-genome sequencing and whole-transcriptome sequencing analyses have also discovered novel alterations in GC. Recent studies of cancer epigenetics have revealed widespread alterations in genes involved in the epigenetic machinery, such as DNA methylation, histone modifications, nucleosome positioning, noncoding RNAs and microRNAs. Recent advances in molecular research on GC have resulted in the introduction of new diagnostic and therapeutic strategies into clinical settings. The anti-human epidermal growth receptor 2 (HER2) antibody trastuzumab has led to an era of personalized therapy in GC. In addition, ramucirumab, a monoclonal antibody targeting vascular endothelial growth factor receptor (VEGFR)-2, is the first biological treatment that showed survival benefits as a single-agent therapy in patients with advanced GC who progressed after first-line chemotherapy. Using NGS to systematically identify gene alterations in GC is a promising approach with remarkable potential for investigating the pathogenesis of GC and identifying novel therapeutic targets, as well as useful biomarkers. In this review, we will summarize the recent advances in the understanding of the molecular pathogenesis of GC, focusing on the potential use of these genetic and epigenetic alterations as diagnostic biomarkers and novel therapeutic targets.

Abstract

Gastric cancer (GC) is one of the most common malignancies and remains the second leading cause of

© 2014 Baishideng Publishing Group Co., Limited. All rights reserved.

Key words: Next-generation sequencing; Microsatellite instability; MicroRNA; Epigenetic field defect; Gastric washes; Insulin-like growth factor 1 receptor

Core tip: The genetic and epigenetic alterations in gastric cancers (GC) have biological and clinical implications. Recent advances in the molecular research of GC have introduced new diagnostic and therapeutic strategies to clinical settings. In this review, we summarize the key findings of past reports pertaining to the genetics and epigenetics of GC and their relationship to and future applications in next-generation sequencing (NGS). We also describe the recurrently mutated genes and alterations in GC identified by NGS technology and discuss the basic framework for future investigations, including the challenges of using NGS as a tool for biomarker and therapeutic target discovery.

Yamamoto H, Watanabe Y, Maehata T, Morita R, Yoshida Y, Oikawa R, Ishigooka S, Ozawa S, Matsuo Y, Hosoya K, Yamashita M, Taniguchi H, Noshio K, Suzuki H, Yasuda H, Shinomura Y, Itoh F. An updated review of gastric cancer in the next-generation sequencing era: Insights from bench to bedside and *vice versa*. *World J Gastroenterol* 2014; 20(14): 3927-3937 Available from: URL: <http://www.wjgnet.com/1007-9327/full/v20/i14/3927.htm> DOI: <http://dx.doi.org/10.3748/wjg.v20.i14.3927>

INTRODUCTION

Gastric cancer (GC) is the second highest cause of global cancer mortality. GC is a heterogeneous disease with multiple environmental etiologies and alternative pathways of carcinogenesis^[1,2]. One of the major etiologic risk factors for GC is *Helicobacter pylori* (*H. pylori*) infection, but only a small proportion of individuals infected with *H. pylori* develop GC^[3,4]. There is an increasing understanding of the roles that genetic and epigenetic alterations play in GCs (Figure 1). Consequently, the development of appropriate biomarkers that reflect an individual's cancer risk is essential to reduce the mortality from GC^[5,6]. Recent advances in molecular research of GC have brought new diagnostic and therapeutic strategies into clinical settings.

Next-generation sequencing (NGS) is a technology that involves the parallel sequencing of enormous amounts of short DNA strands from randomly fragmented copies of a genome^[7,8]. NGS methods used for genome^[9], exome^[10], epigenome^[11] and transcriptome^[12] sequencing have the potential to provide novel avenues towards achieving a comprehensive understanding of diseases, including cancer^[13,14]. Such advances have also shown puzzling tumor heterogeneity with limited somatic alterations shared between tumors of the same histopathologic subtype^[15-17]. Although NGS techniques are just beginning to expand our abilities to detect genome-

wide alterations in GC, several NGS studies in GC have recently been published^[18].

In this review, we summarize the key findings of past reports pertaining to the genetics and epigenetics of GC and their relationship to and future application in NGS. We also describe the recurrently mutated genes and alterations in GC identified by NGS technology and discuss the basic framework for future investigations, including the challenges of using NGS as a tool for biomarker and therapeutic target discovery.

MICROSATELLITE INSTABILITY

A type of genetic instability characterized by alterations in length within simple repeat microsatellite sequences, termed microsatellite instability (MSI), occurs in approximately 15% of sporadic GCs, mainly as a result of epigenetic changes^[19-22]. Genetic and epigenetic inactivation of DNA mismatch repair (MMR) genes leads to the mutator phenotype, mutations in cancer-related genes and cancer development (Figure 2). MSI underlies a distinctive carcinogenic pathway because MSI-positive (MSI⁺) GCs exhibit many differences in clinical, pathological and molecular characteristics compared with MSI-negative (MSI⁻) GCs^[19-22]. The differences in genotype occur because defective MMR results in a strong mutator phenotype with a very specific mutation spectrum. MSI mainly accumulates frameshift mutations in the repeated sequences located in the coding regions of a target tumor suppressor or other tumor-related genes^[23-26]. The atypical genotype of MSI⁺ GCs also includes specific patterns of gene dysregulation. MSI⁺ GCs often show epigenetic alterations, such as hypermethylation of various genes, including the key MMR gene *MLH1*. The differences in genotype and phenotype between MSI⁺ and MSI⁻ GCs are likely linked to their differences in biological and clinical features. Recent findings from NGS analysis, such as the frequent mutation of the AT-rich interactive domain 1A (ARID1A) in MSI⁺ GCs, support this notion^[27,28].

The clinicopathological, genetic, epigenetic, prognostic and therapeutic characteristics of MSI⁺ GCs are becoming clearer, but further research is still required. Because molecular targeting therapeutics are being used in clinical settings and trials, the differential regulation of molecular target genes in MSI⁺ and MSI⁻ GCs^[29,30] needs to be clarified. Diagnostic characterization of the MSI status of GCs thus has important implications for basic and clinical oncology.

Frequent inactivating mutations of ARID1A in molecular subtypes of GC identified by exome sequencing

Holbrook *et al.*^[31] analyzed 50 GC samples with targeted deep sequencing of the DNA of 384 genes. In addition to the previously reported mutations in genes belonging to various pathways, the authors found tractable target genes, such as the genes for the thyrotropin receptor and the Rho-associated coiled-coil containing protein kinases ROCK1 and ROCK2. Wang *et al.*^[27] performed exome

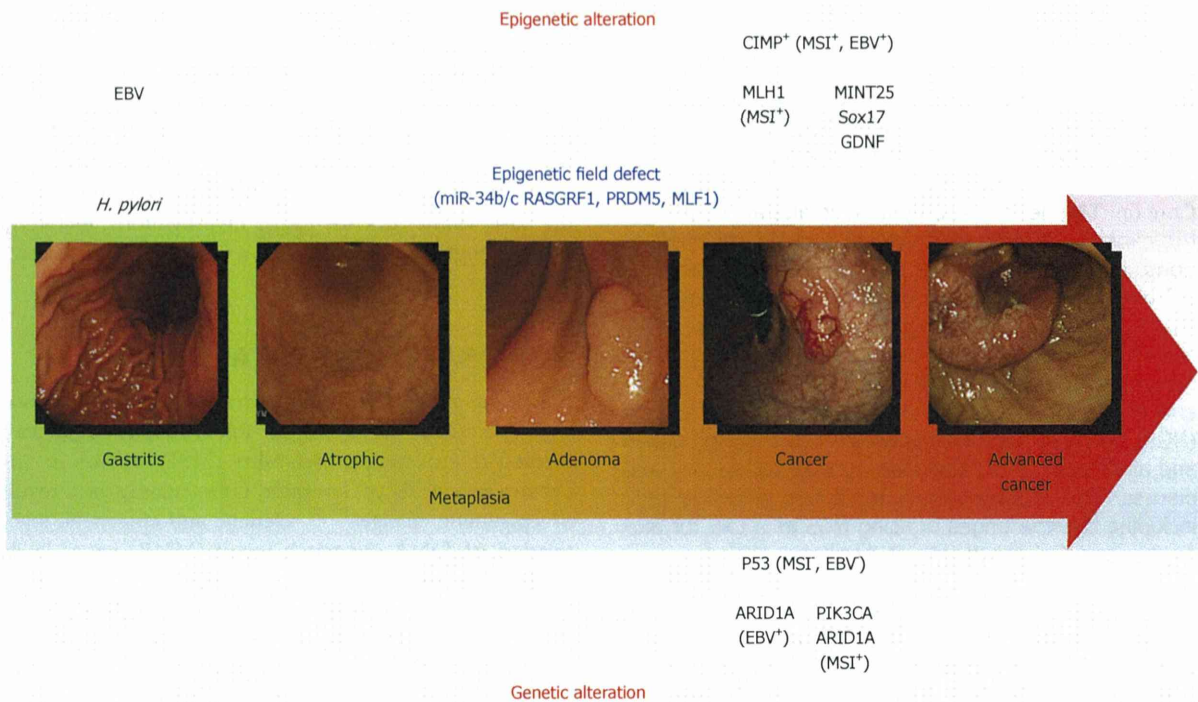


Figure 1 Genetic and epigenetic alterations in gastric carcinogenesis. The model for gastric carcinogenesis is presented based on genetic and epigenetic alterations. Methylation of the genes in blue appears to be involved in an epigenetic field defect. *H. pylori*: *Helicobacter pylori*; MSI: Microsatellite instability; EBV: Epstein-Barr virus; CIMP: CpG island methylator phenotype.

sequencing of 22 GC samples and found novel mutated genes and pathway alterations involved in chromatin modification. A validation study confirmed frequent inactivating mutations or protein loss of the ARID1A gene, which encodes one of the subunits in the Switch/Sucrose Nonfermentable (SWI-SNF) chromatin remodeling complex. The mutation spectrum for ARID1A differed among molecular subtypes of GC; mutations were detected in 83% of GCs with MSI, 73% of GCs with EBV infection and 11% of GCs without EBV and MSI. Moreover, ARID1A mutations were negatively associated with TP53 mutations. ARID1A alterations were associated with better prognosis in a stage-independent manner. These results suggest the importance of altered chromatin remodeling in the pathogenesis of GC.

Recurrent somatic mutations in cell adhesion and chromatin remodeling genes identified by exome sequencing

Zang *et al.*^[28] also analyzed a spectrum of somatic alterations in GC by sequencing the exomes of 15 GC specimens, including 11 intestinal-type, 1-mixed-type, and 3 diffuse-type adenocarcinomas and their matched normal DNAs. TP53 (11/15 tumors), PIK3CA (3/15) and ARID1A (3/15) were frequently mutated. Among the frequently mutated genes, cell adhesion was the most significant biological pathway affected. A prevalence screening confirmed mutations in FAT4, a member of the cadherin gene family, in 5% of GCs (6/110) and FAT4 genomic deletions in 4% (3/83) of GCs. Mutations in chromatin remodeling genes (*ARID1A*, *MLL3* and *MLL*) were

also found in 47% of GCs. ARID1A mutations were detected in 8% of GCs (9/110) and were associated with concurrent PIK3CA mutations and MSI. Both FAT4 and ARID1A showed tumor-suppressor activity in functional assays. Somatic inactivation of FAT4 and ARID1A may thus be key tumorigenic events in a subset of GCs. Because PI3K inhibitors are currently in clinical testing as treatment for GC^[32], it will be interesting to evaluate whether the tumor responses to these compounds are affected by the genomic status of ARID1A.

Frequent loss of ARID1A expression in GC with EBV infection or MSI

Mutations of ARID1A lead to a loss of protein expression in GC and are particularly associated with EBV infection or MSI. Abe *et al.*^[33] investigated the significance of the loss of ARID1A in 857 GC cases, including 67 EBV⁺ and 136 MLH1-lost MSI⁺ GCs. Loss of ARID1A expression was significantly more frequent in cases of EBV⁺ (23/67; 34%) and MSI⁺ (40/136; 29%) GCs than in cases of EBV/MSI (32/657; 5%) GCs. Loss of ARID1A was correlated with larger tumor size, deeper depth of invasion, lymph node metastasis and poorer prognosis in cases of EBV/MSI GC. A correlation with tumor size and diffuse-type histology was found only in the MSI⁺ GC; no correlation was observed in EBV⁺ GC. Loss of ARID1A expression in EBV⁺ GC was frequent in the early stage of GC, but EBV infection did not cause loss of ARID1A in GC cell lines. Thus, loss of ARID1A may be an early event in EBV⁺ GC and may precede EBV infection in gastric epithelial cells. On the other hand,