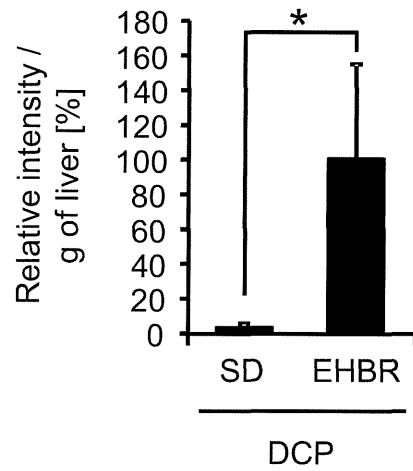


添付資料 4-2

No.8

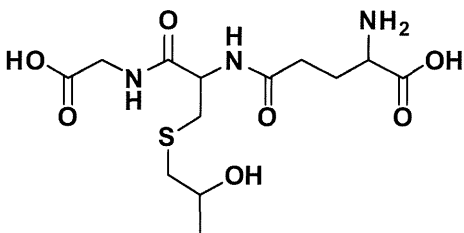


n = 3

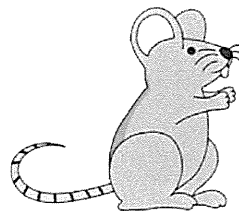
Bars; S.E.M.

N.D.; Not detected

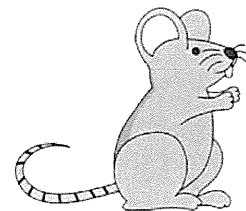
* p<0.05, Mann-Whitney U test



No.8



SD rat



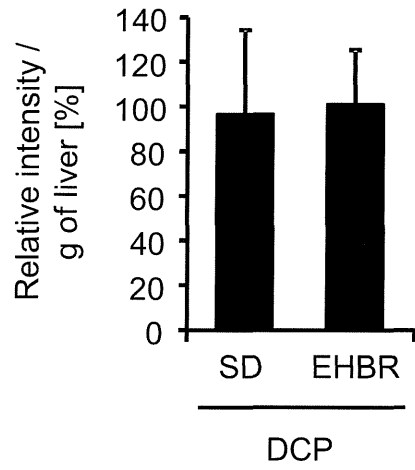
EHBR

vs

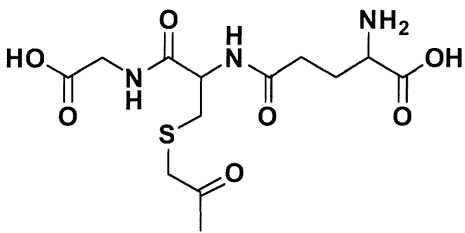
(Liver)

添付資料 4-3

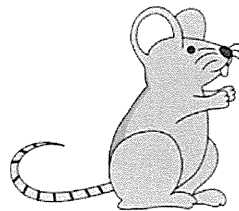
No.7



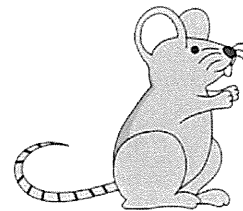
n = 3
Bars; S.E.M.



No.7



SD rat



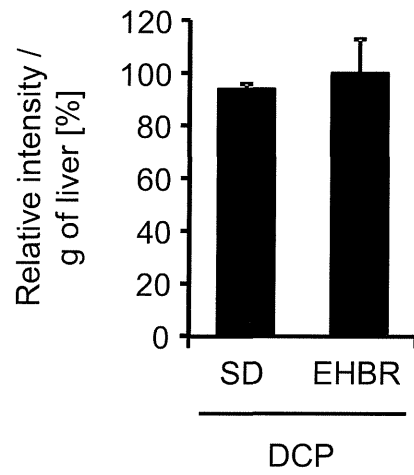
EHBR

vs

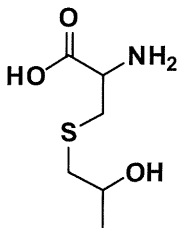
(Liver)

添付資料 4-4

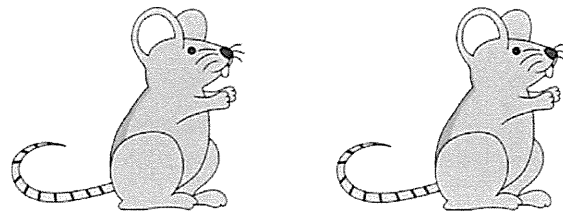
No.1



n = 3
Bars; S.E.M.



No.1

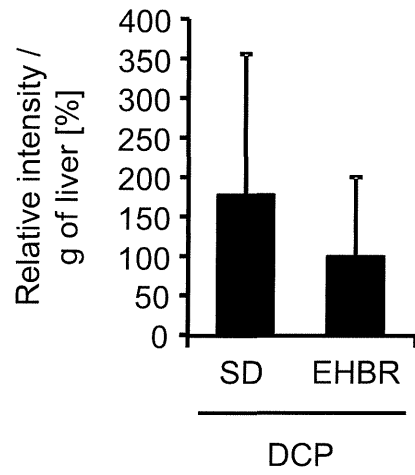


SD rat vs EHBR

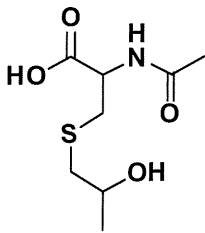
(Liver)

添付資料 4-5

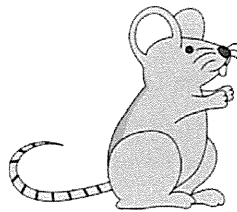
No.10



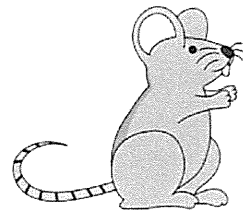
n = 3
Bars; S.E.M.



No.10



SD rat



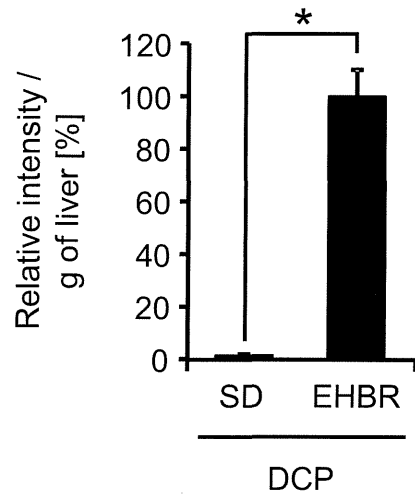
EHBR

vs

(Liver)

添付資料 4-6

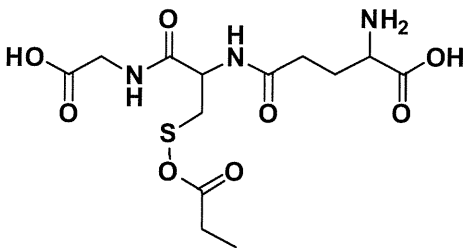
No.9



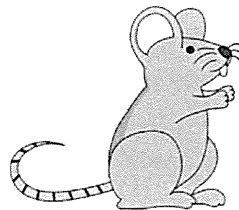
n = 3

Bars; S.E.M.

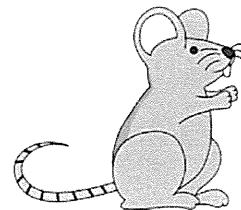
* p<0.05, Mann-Whitney U test



No.9



SD rat



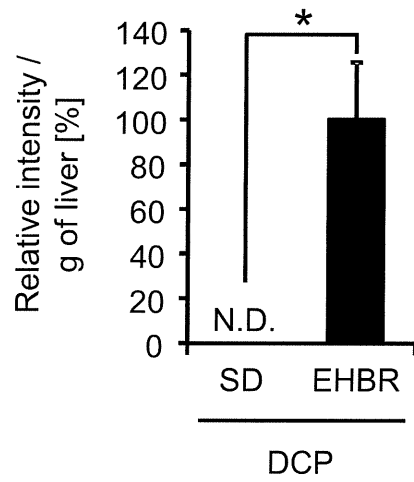
EHBR

vs

(Liver)

添付資料 4-7

No.2

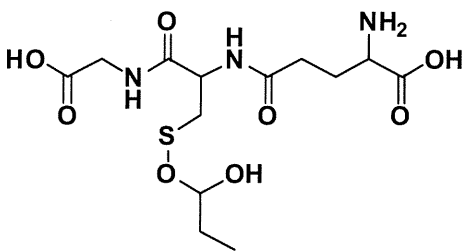


n = 3

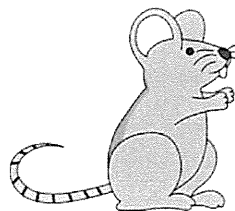
Bars; S.E.M.

N.D.; Not detected

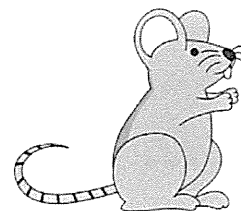
* p<0.05, Mann-Whitney U test



No.2



SD rat



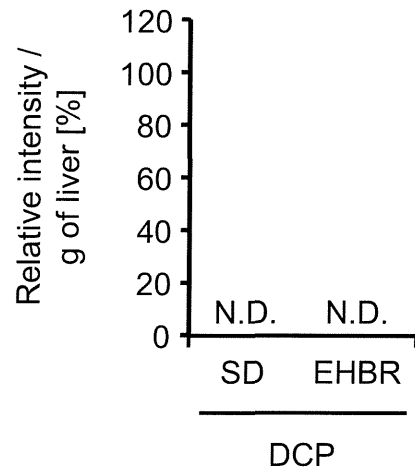
vs

EHBR

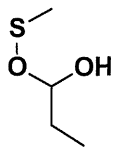
(Liver)

添付資料 4-8

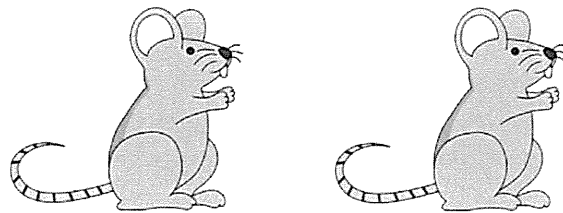
No.4



n = 3
Bars; S.E.M.
N.D.; Not detected



No.4

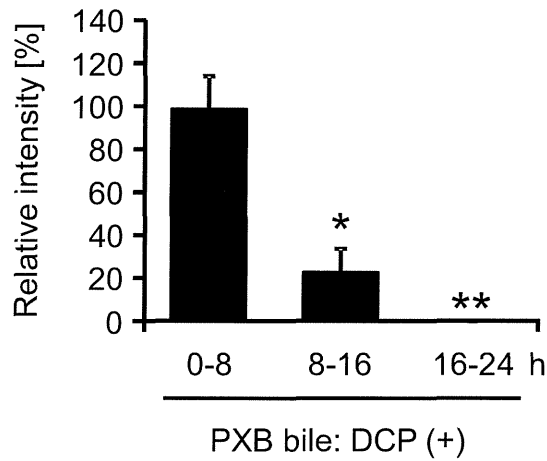


SD rat vs EHBR

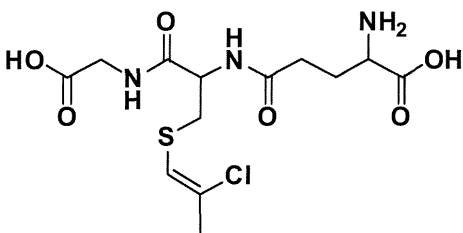
(Liver)

添付資料 5-1

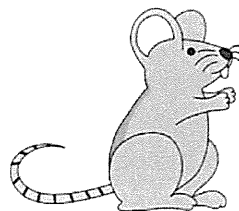
No.12



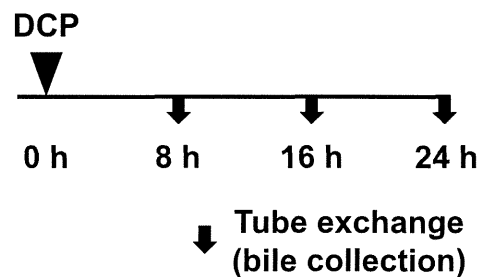
n = 3
Bars; S.E.M.
* p<0.05, ** p<0.01,
Shirley-Williams' multiple
comparison test



No.12

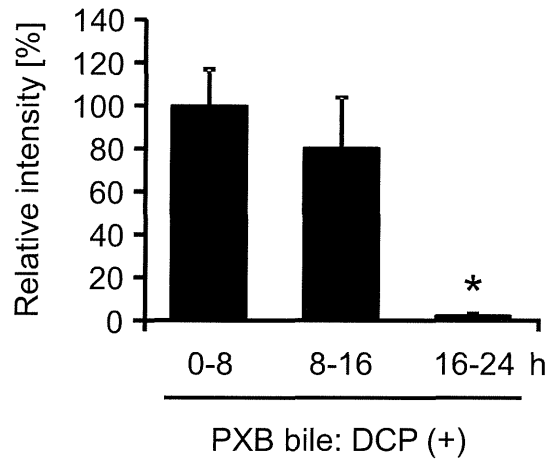


PXB mouse

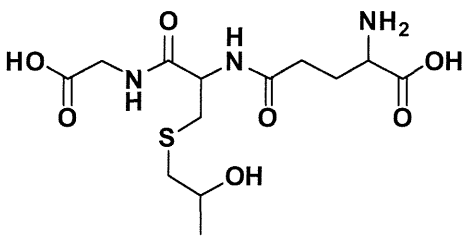


添付資料 5-2

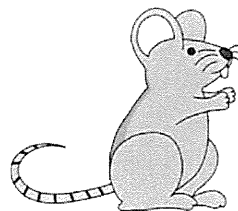
No.8



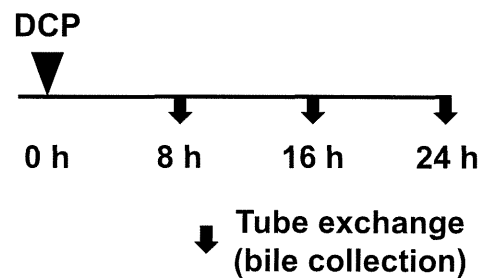
n = 3
Bars; S.E.M.
* p<0.05, ** p<0.01,
Shirley-Williams' multiple
comparison test



No.8

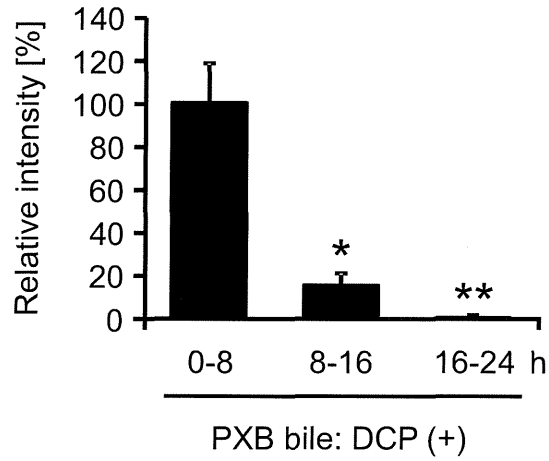


PXB mouse

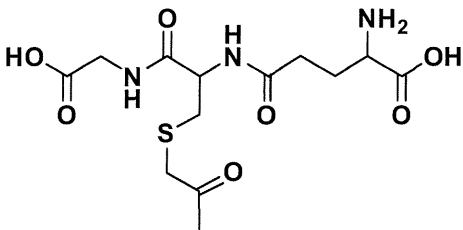


添付資料 5-3

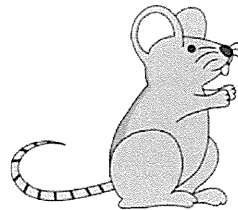
No.7



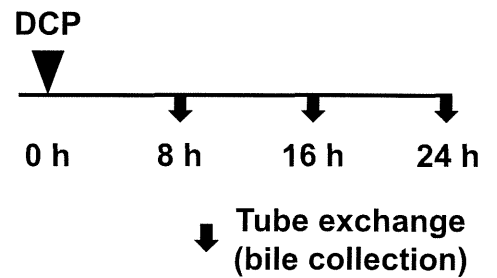
n = 3
Bars; S.E.M.
* p<0.05, ** p<0.01,
Shirley-Williams' multiple
comparison test



No.7

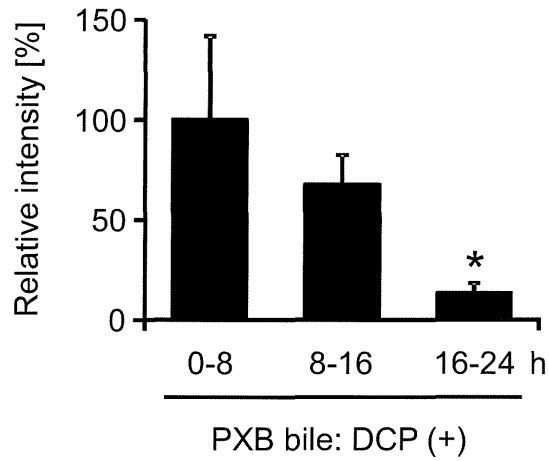


PXB mouse

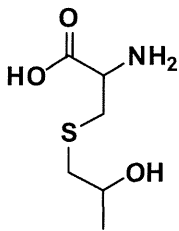


添付資料 5-4

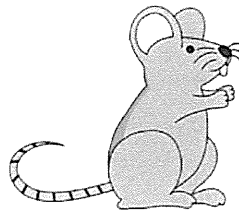
No.1



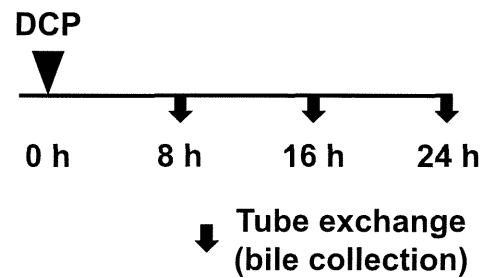
n = 3
Bars; S.E.M.
* p<0.05, ** p<0.01,
Shirley-Williams' multiple
comparison test



No.1

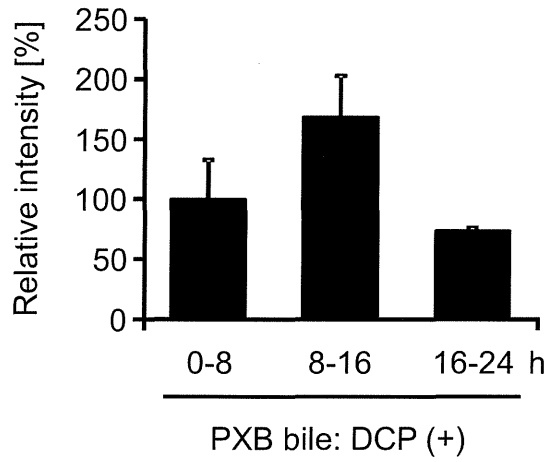


PXB mouse

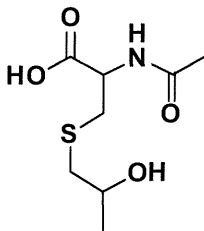


添付資料 5-5

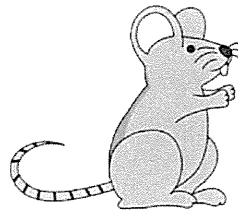
No.10



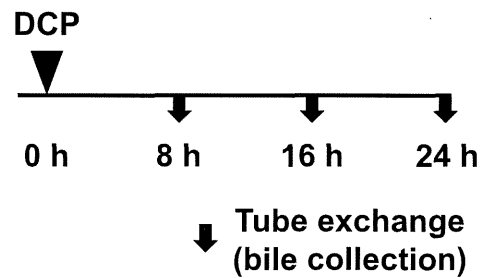
n = 3
Bars; S.E.M.
* p<0.05, ** p<0.01,
Shirley-Williams' multiple
comparison test



No.10

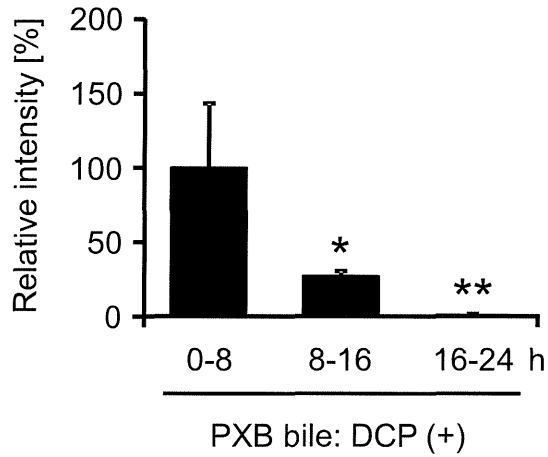


PXB mouse

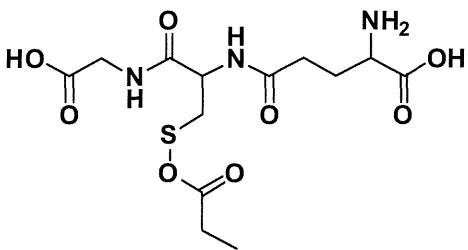


添付資料 5-6

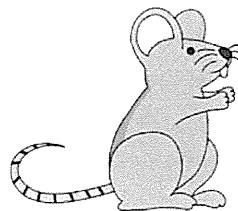
No.9



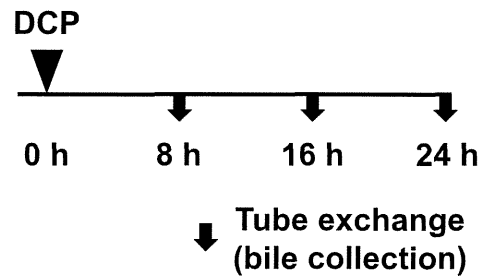
n = 3
Bars; S.E.M.
* p<0.05, ** p<0.01,
Shirley-Williams' multiple
comparison test



No.9

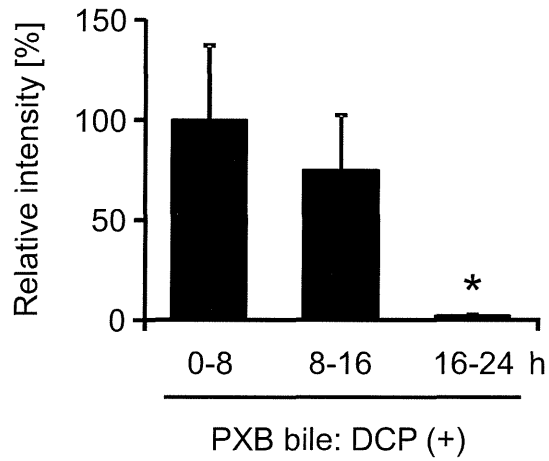


PXB mouse

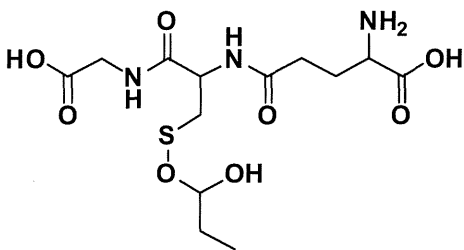


添付資料 5-7

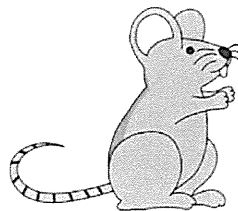
No.2



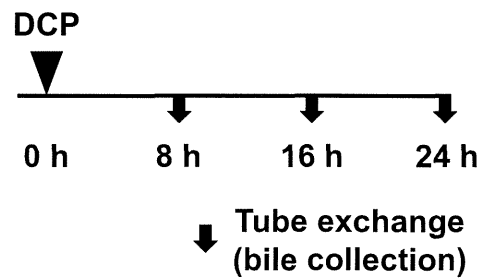
n = 3
Bars; S.E.M.
* p<0.05, ** p<0.01,
Shirley-Williams' multiple
comparison test



No.2

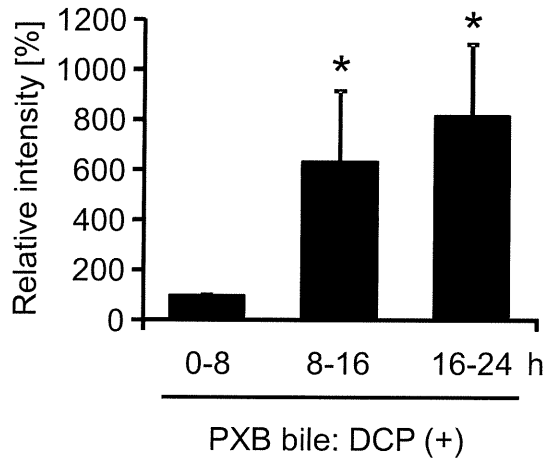


PXB mouse

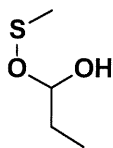


添付資料 5-8

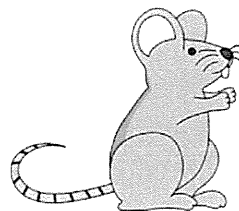
No.4



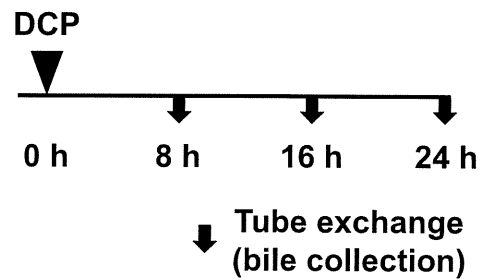
n = 3
Bars; S.E.M.
* p<0.05, ** p<0.01,
Shirley-Williams' multiple
comparison test



No.4

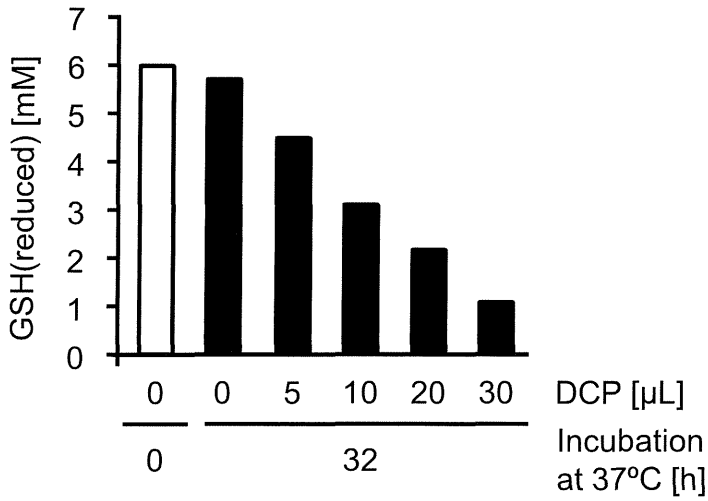


PXB mouse

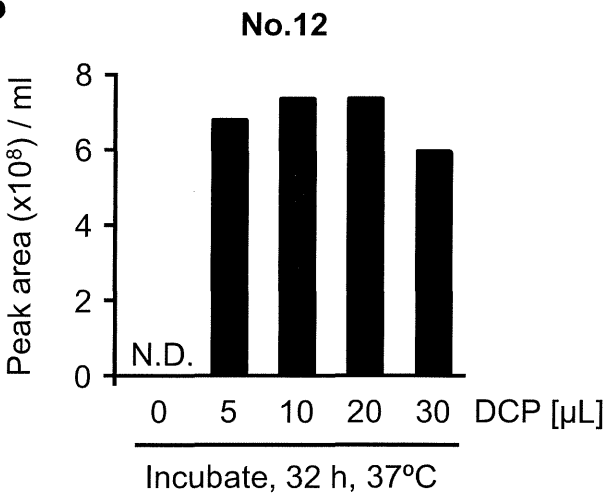


添付資料 6

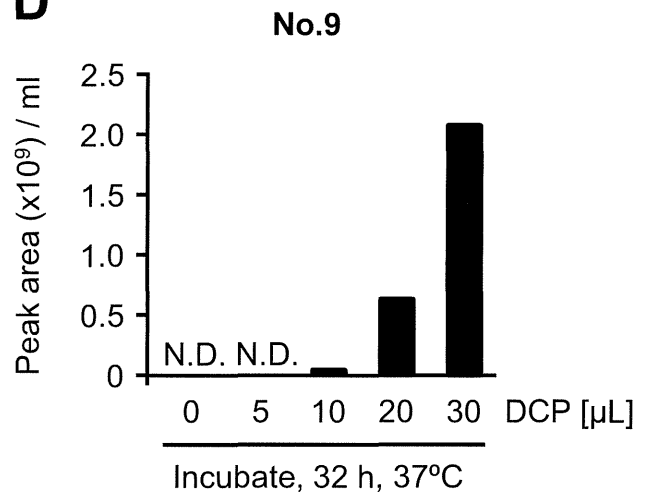
A



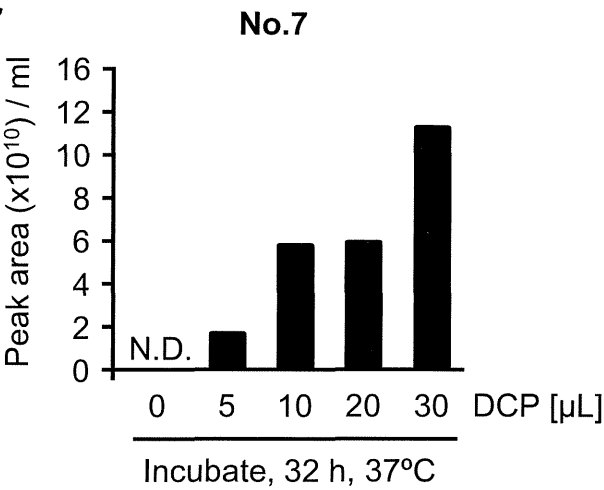
B



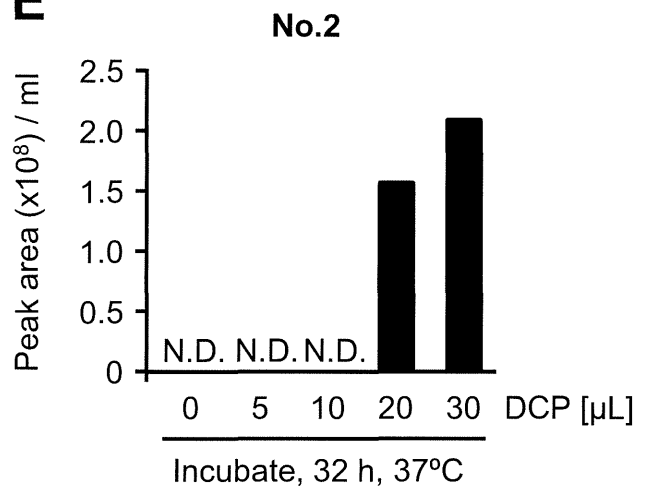
D



C



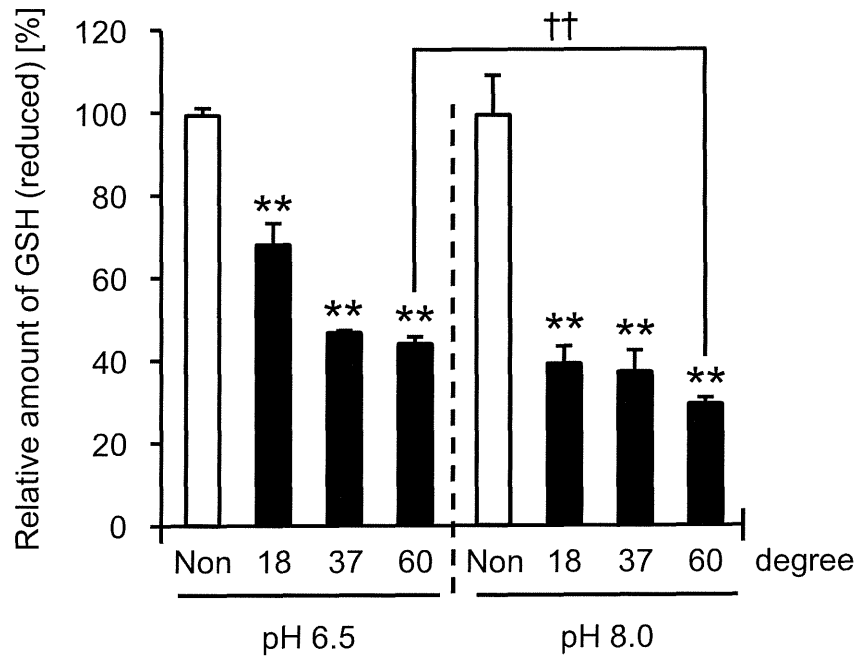
E



N.D.; Not detected

#8, #4, #1: Not detected in all samples

添付資料 7



n = 3

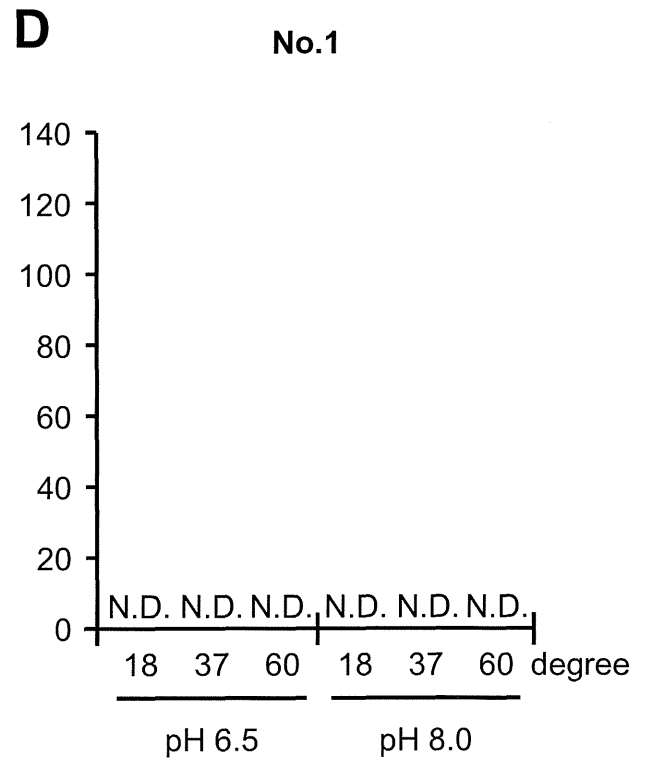
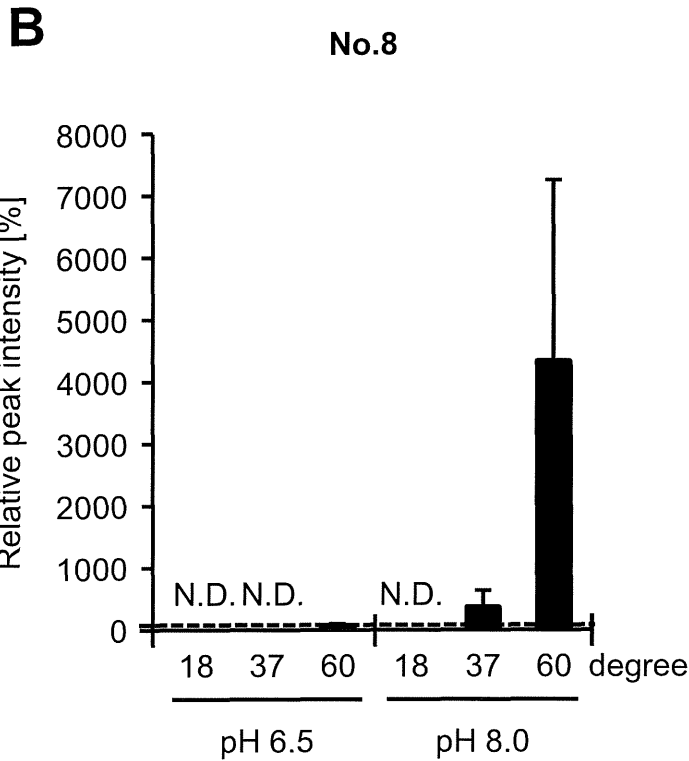
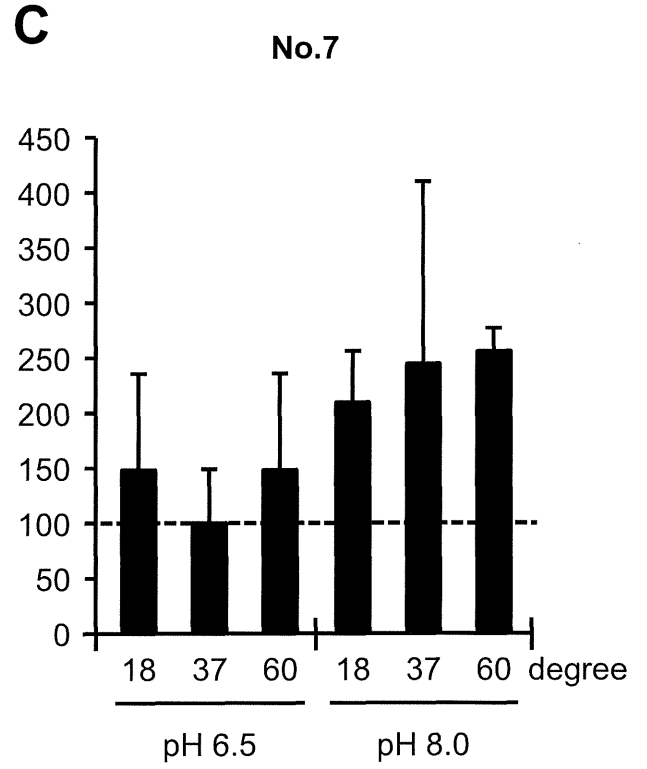
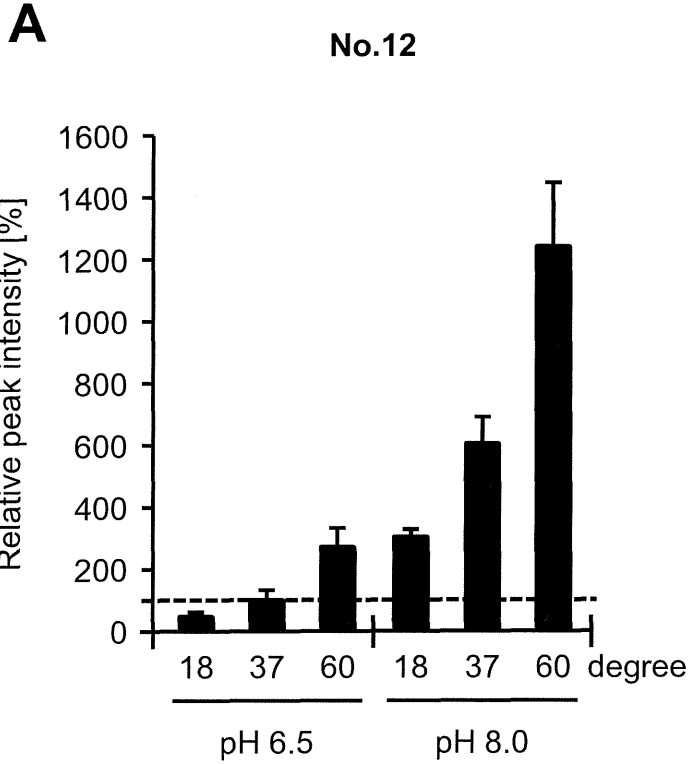
Bars; S.D.

Non, without incubation

** p<0.01, Williams' test

†† p<0.01, Student's t test

添付資料 8-1

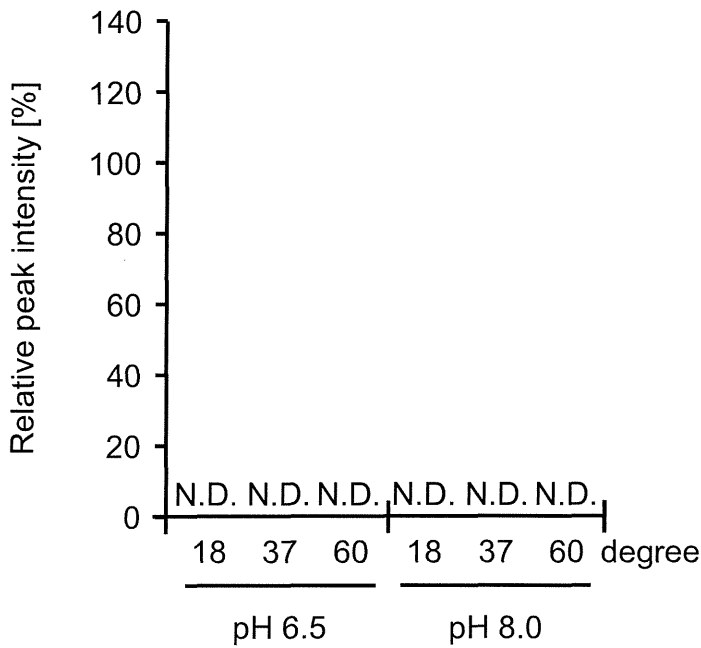


n = 3, Bars; S.D., N.D.; Not detected 100%, pH6.5-37°C

添付資料 8-2

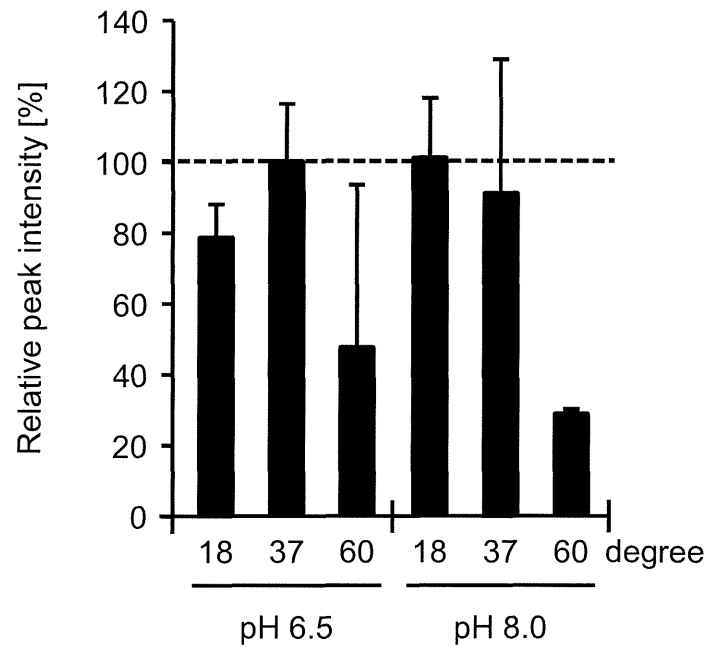
A

No.10



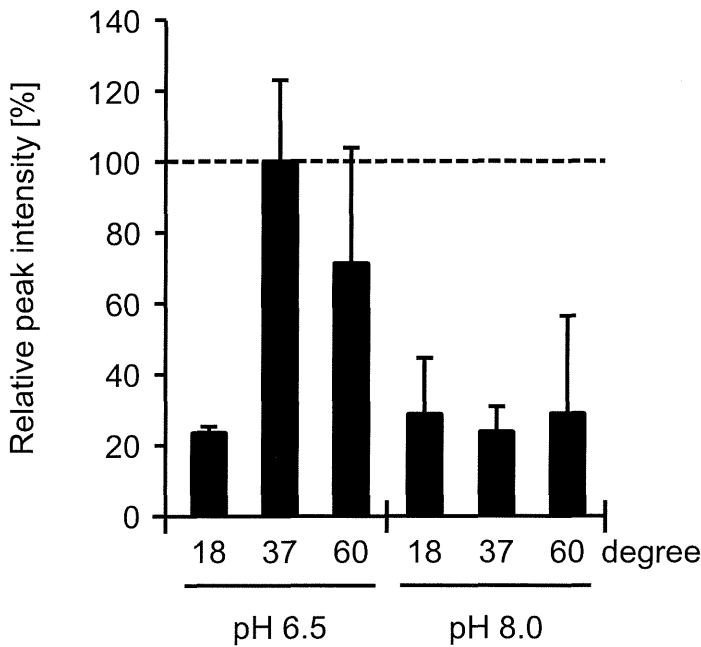
C

No.2



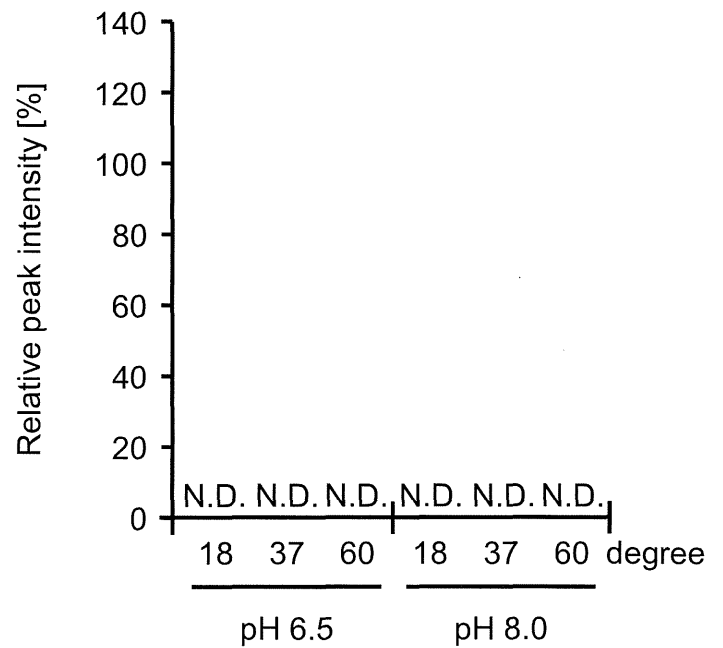
B

No.9



D

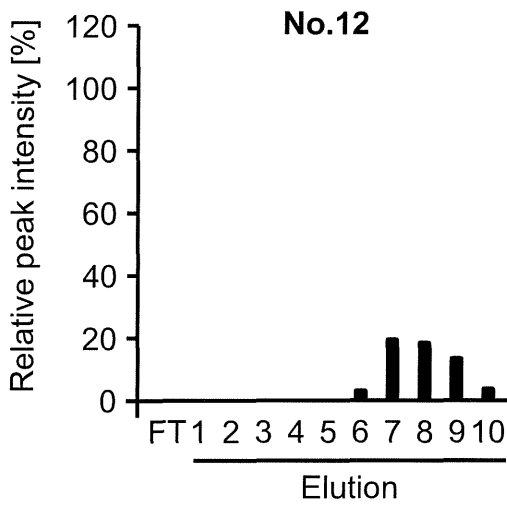
No.4



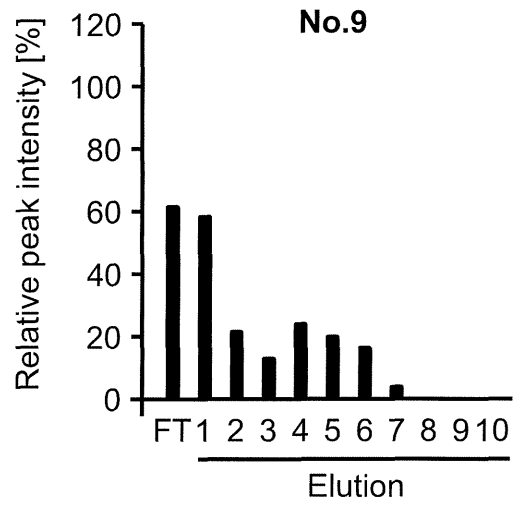
n = 3, Bars; S.D., N.D.; Not detected
100%, pH6.5-37°C

添付資料 9

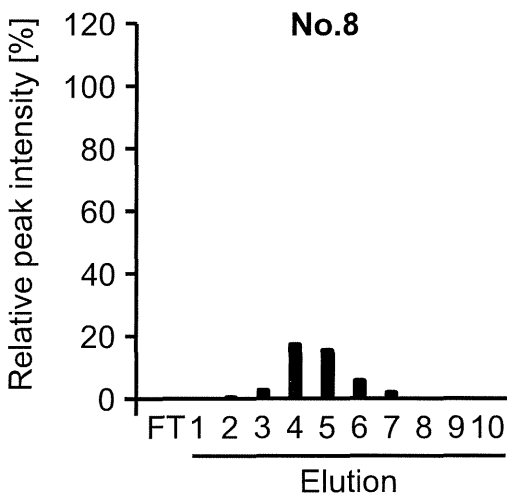
A



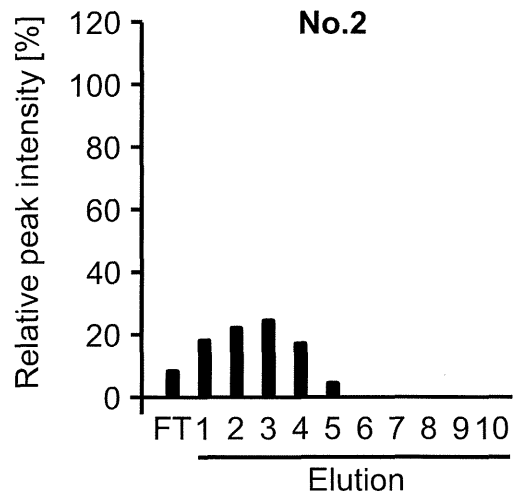
D



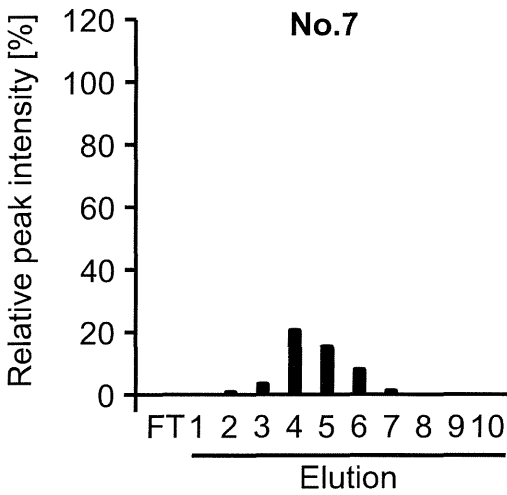
B



E



C



F

