

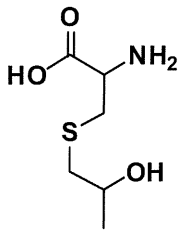
添付資料 1-1

メタボローム差異解析によって見出された代謝物リスト

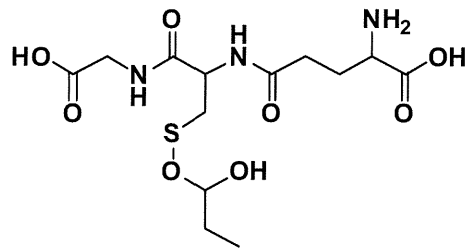
No.	Time		m/z		Formula
	LC method #1	LC method #2	(positive)	(negative)	
1	1.34	1.19	180.0687	178.0549	C6H13O3NS
2	1.37	0.91	382.1276	380.1145	C13H23O8N3S
3	1.37	1.25	194.0480	192.0342	C6H11O4NS
4	1.76	1.48	123.0473	-	C4H10O2S
5	1.92	1.66	290.1340	288.1208	C11H19O6N3
6	2.23	1.82	237.0901	-	C8H16O4N2S
7	3.88	3.13	364.1170	362.1040	C13H21O7N3S
8	4.05	3.27	366.1322	364.1192	C13H23O7N3S
9	4.64	3.97	380.1118	378.0987	C13H21O8N3S
10	9.16	7.37	222.0791	220.0655	C8H16O4NS
11	11.24	7.83	408.1432	406.1301	C15H25O8N3S
12	13.36	8.18	382.0830	380.0702	C13H20O6N3CIS
13	14.71	-	248.0949	246.0813	C10H18O4NS

No.5, 11, 13は、コントロール群とサンプル群とで差異は見出されたものの、代謝物かどうかの判別はしかねるピークであった。

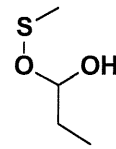
添付資料 1-2



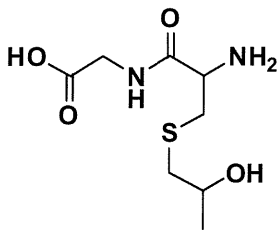
No.1



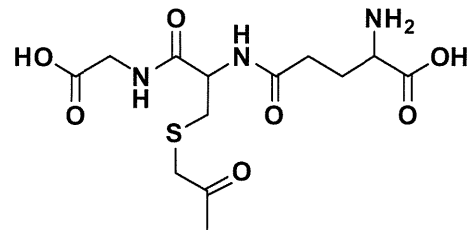
No.2



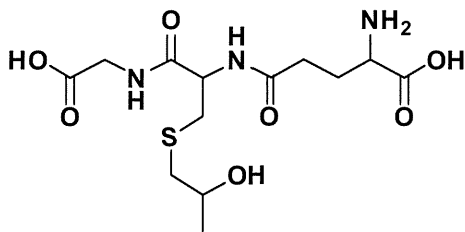
No.4



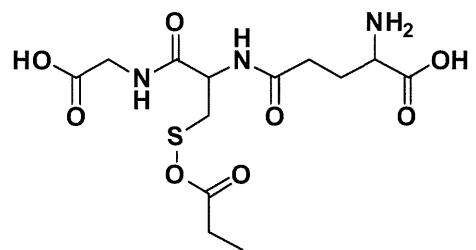
No.6



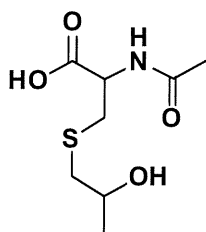
No.7



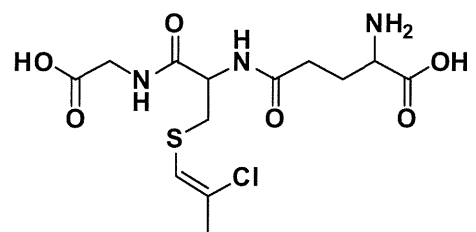
No.8



No.9



No.10

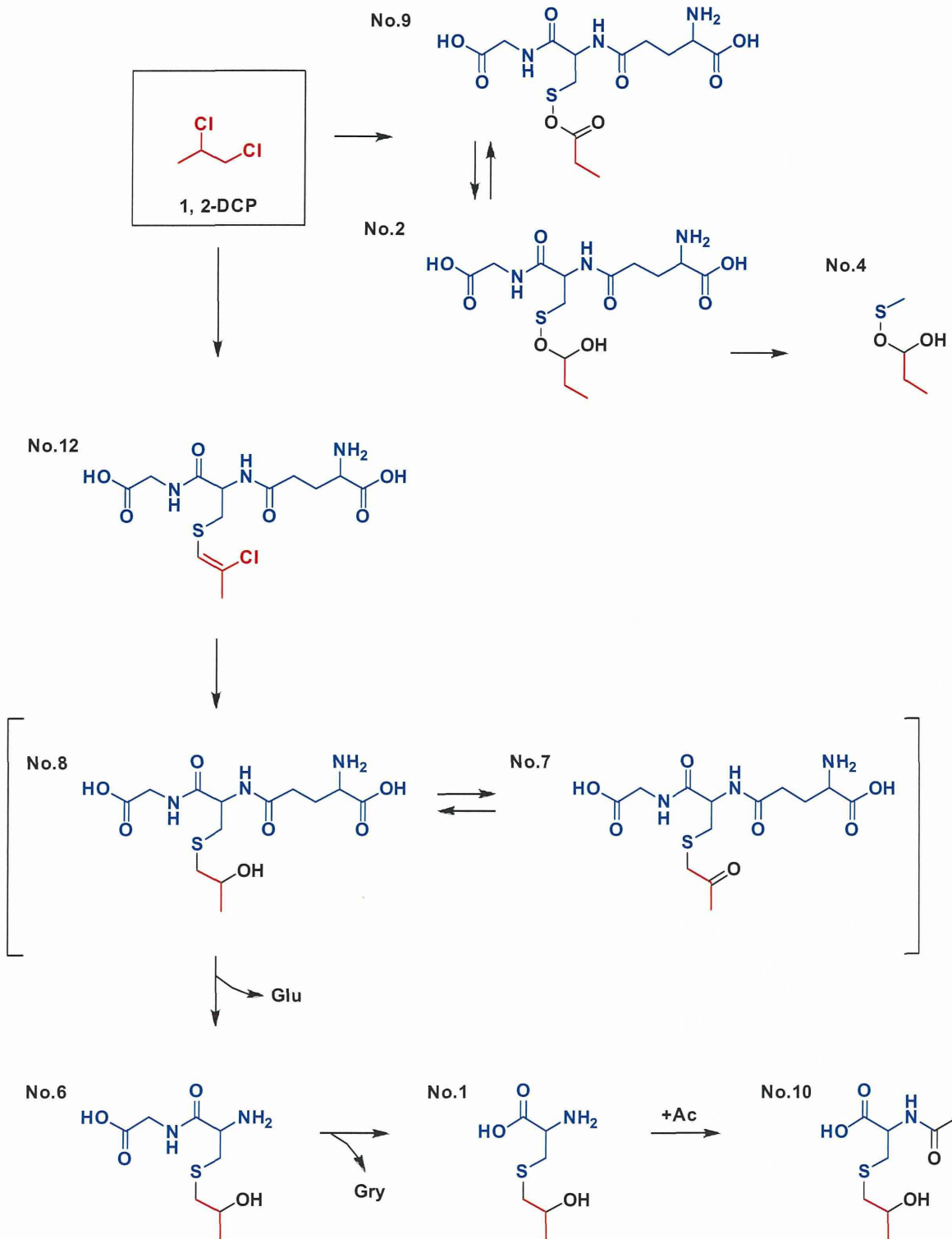


No.12

No.5, 11, 13は代謝物かどうかの判別がつかねた

メタボローム差異解析によって見出された各代謝物の推定構造式

添付資料 1-3

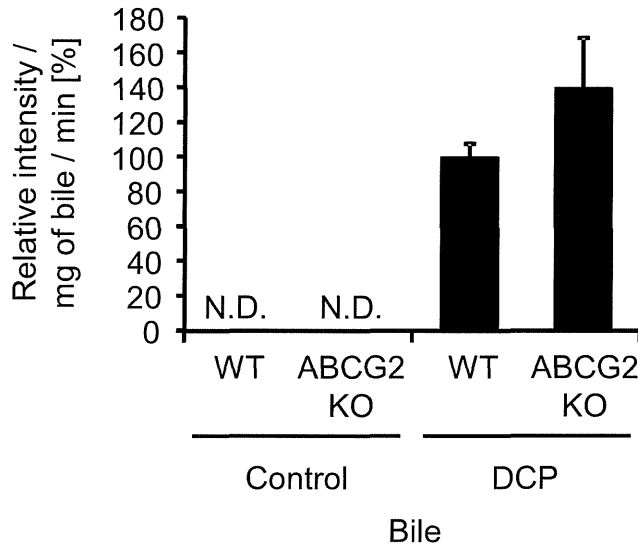


1, 2-ジクロロプロパン由来骨格
グルタチオン由来骨格

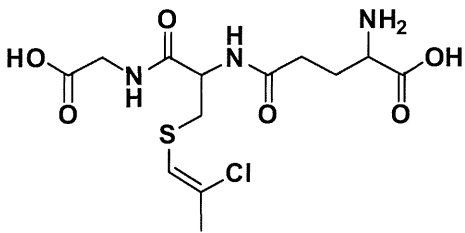
胆汁排泄された1, 2-ジクロロプロパンの予想代謝経路

添付資料 2-1

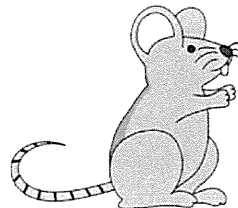
No.12



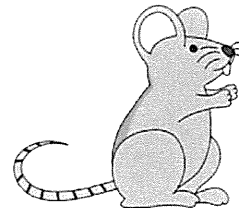
n = 3-4; control,
n = 6-7; DCP
Bars; S.E.M.
N.D.; Not detected



No.12



WT

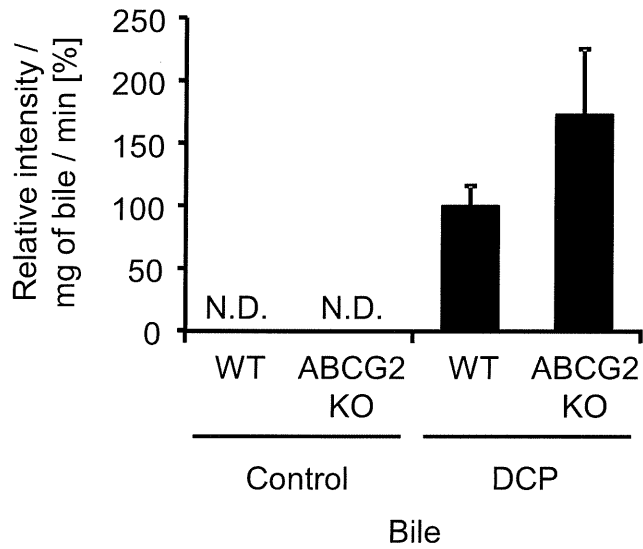


vs
ABCG2
KO

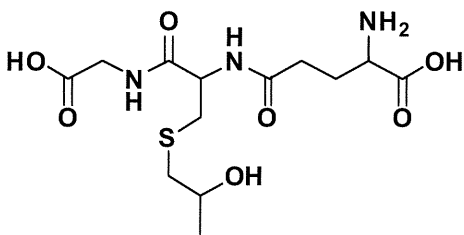
(Bile)

添付資料 2-2

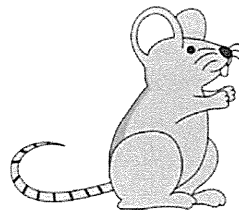
No.8



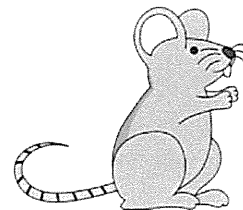
n = 3-4; control,
n = 6-7; DCP
Bars; S.E.M.
N.D.; Not detected



No.8



WT



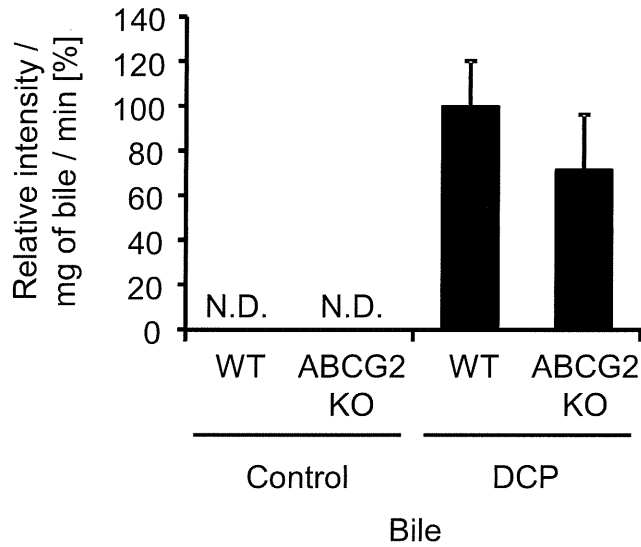
ABCG2
KO

vs

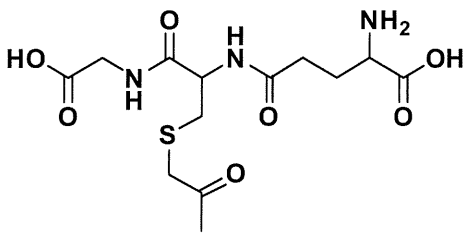
(Bile)

添付資料 2-3

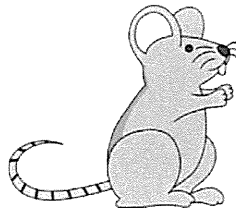
No.7



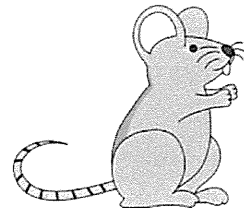
n = 3-4; control,
n = 6-7; DCP
Bars; S.E.M.
N.D.; Not detected



No.7



WT



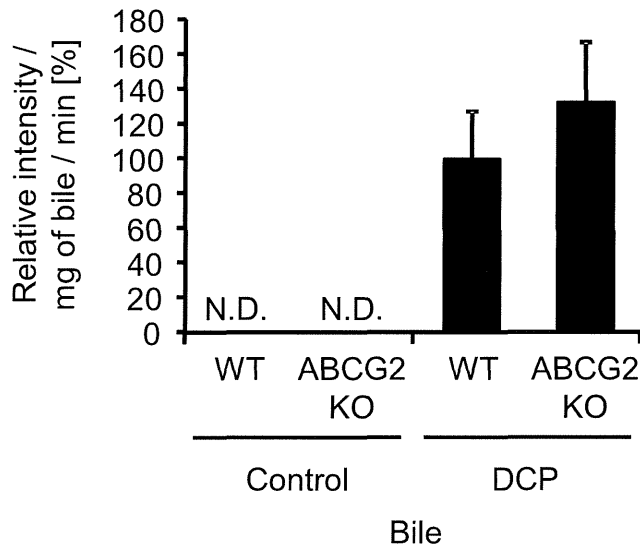
vs

ABCG2
KO

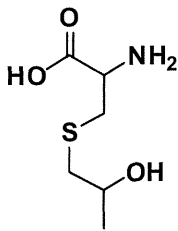
(Bile)

添付資料 2-4

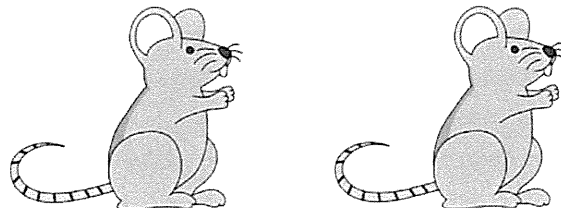
No.1



n = 3-4; control,
n = 6-7; DCP
Bars; S.E.M.
N.D.; Not detected



No.1



WT

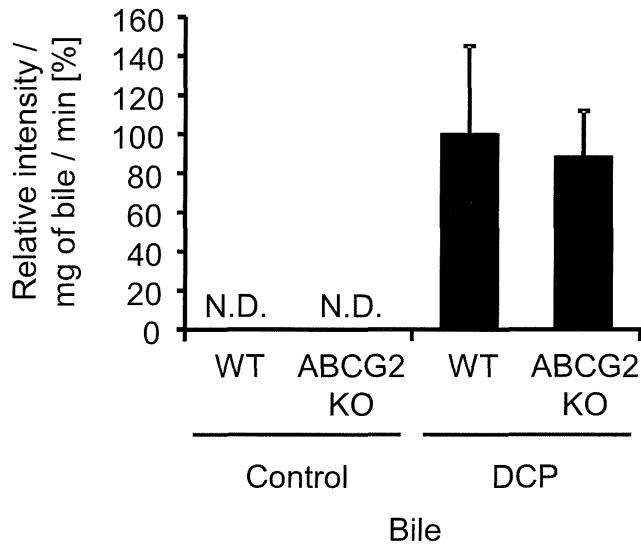
vs

ABCG2
KO

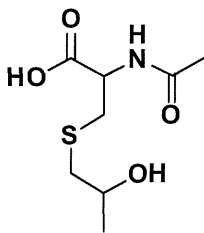
(Bile)

添付資料 2-5

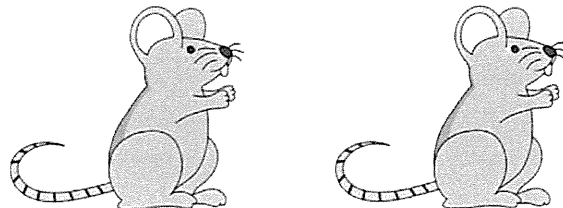
No.10



n = 3-4; control,
n = 6-7; DCP
Bars; S.E.M.
N.D.; Not detected



No.10



WT

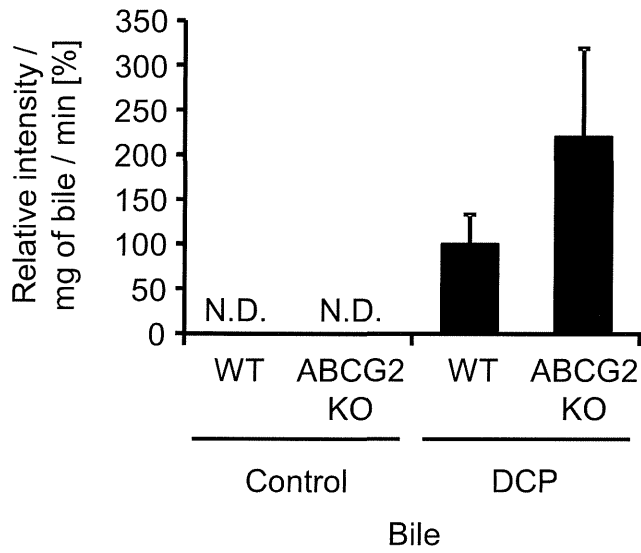
vs

ABCG2
KO

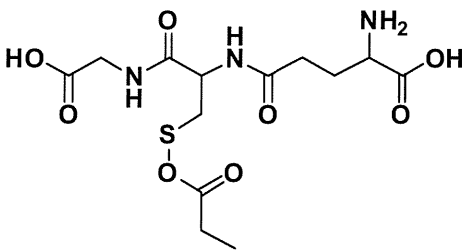
(Bile)

添付資料 2-6

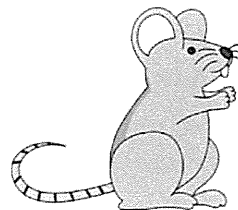
No.9



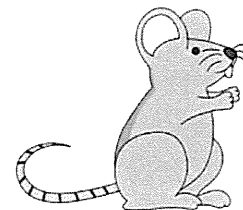
n = 3-4; control,
n = 6-7; DCP
Bars; S.E.M.
N.D.; Not detected



No.9



WT

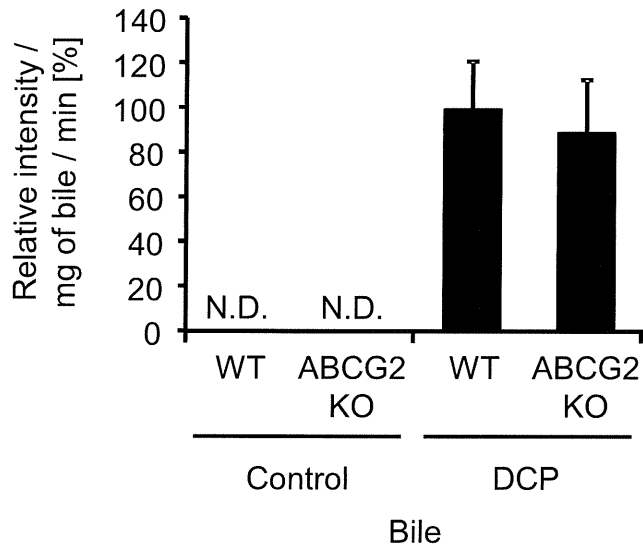


vs
ABCG2
KO

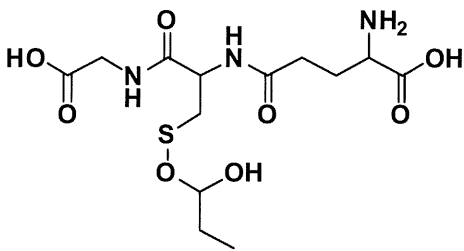
(Bile)

添付資料 2-7

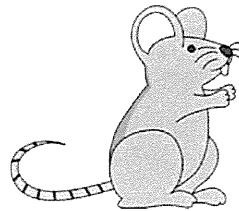
No.2



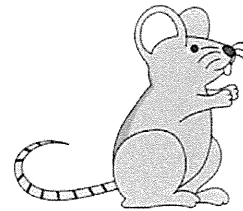
n = 3-4; control,
n = 6-7; DCP
Bars; S.E.M.
N.D.; Not detected



No.2



WT



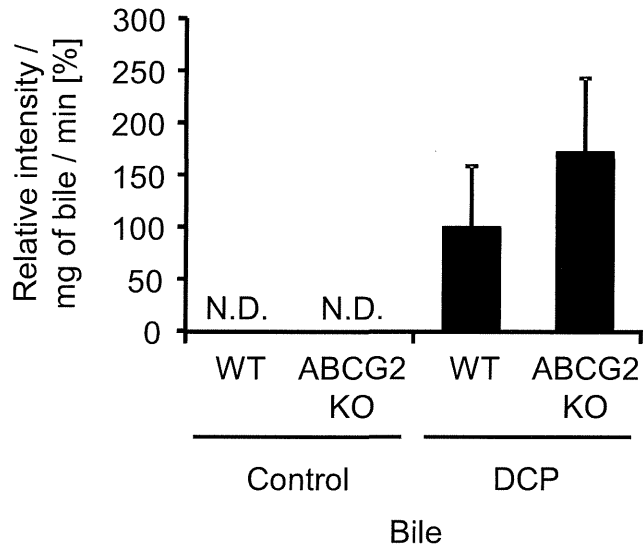
vs

ABCG2
KO

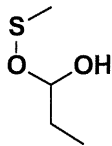
(Bile)

添付資料 2-8

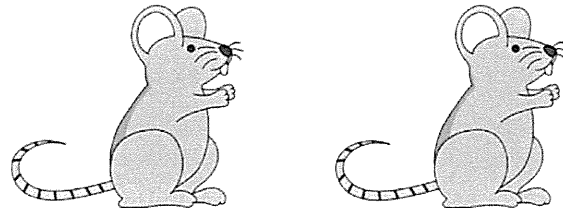
No.4



n = 3-4; control,
n = 6-7; DCP
Bars; S.E.M.
N.D.; Not detected



No.4



WT

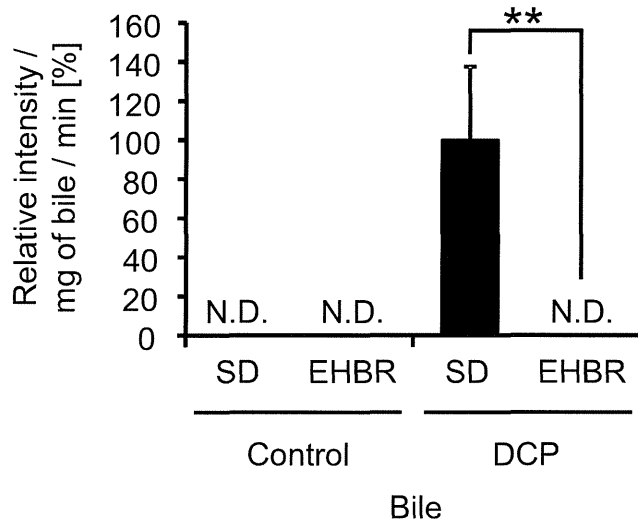
vs

ABCG2
KO

(Bile)

添付資料 3-1

No.12

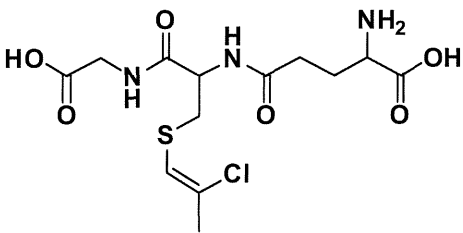


n = 6

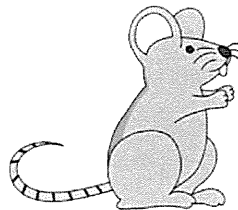
Bars; S.E.M.

N.D.; Not detected

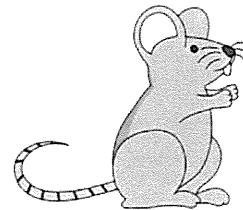
** p < 0.01, Mann-Whitney U test



No.12



SD rat



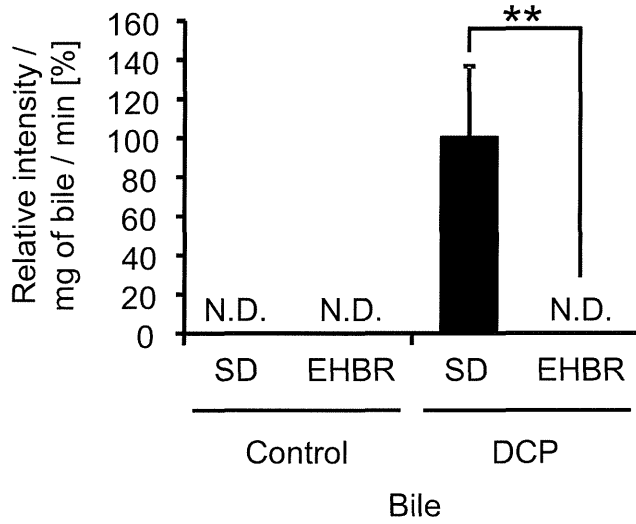
EHBR

vs

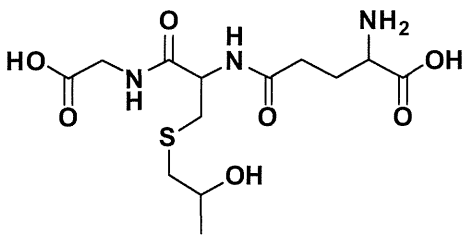
(Bile)

添付資料 3-2

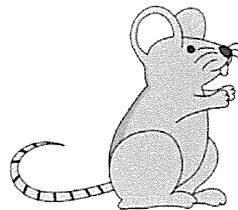
No.8



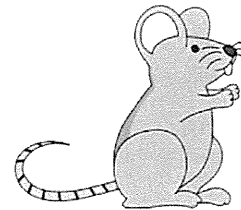
n = 6
Bars; S.E.M.
N.D.; Not detected
** p<0.01, Mann-Whitney U test



No.8



SD rat

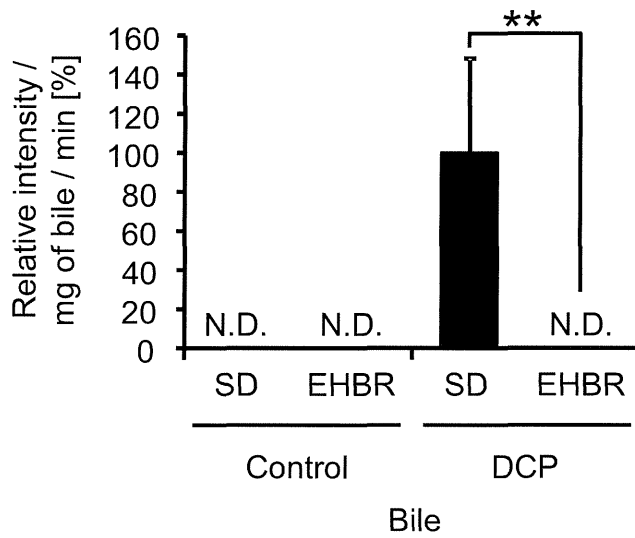


EHBR

(Bile)

添付資料 3-3

No.7

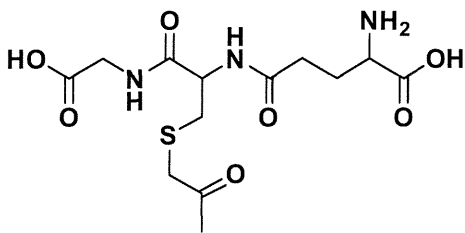


n = 6

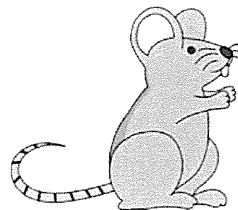
Bars; S.E.M.

N.D.; Not detected

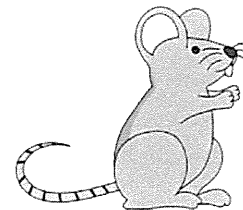
** p<0.01, Mann-Whitney U test



No.7



SD rat



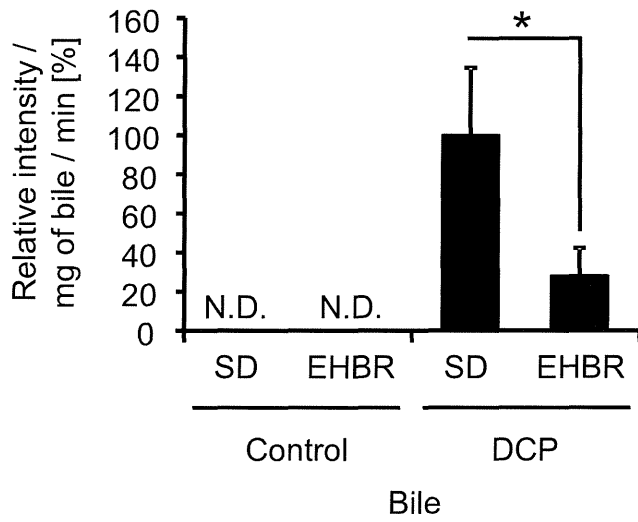
EHBR

vs

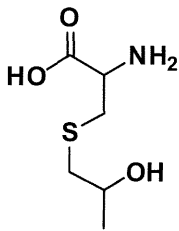
(Bile)

添付資料 3-4

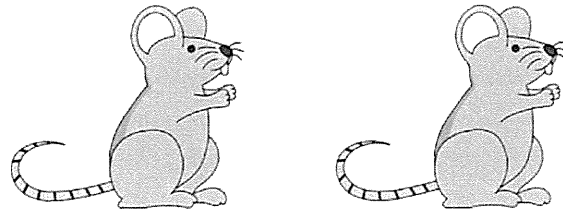
No.1



n = 6
Bars; S.E.M.
N.D.; Not detected
* p<0.05 Student's t test (s)



No.1

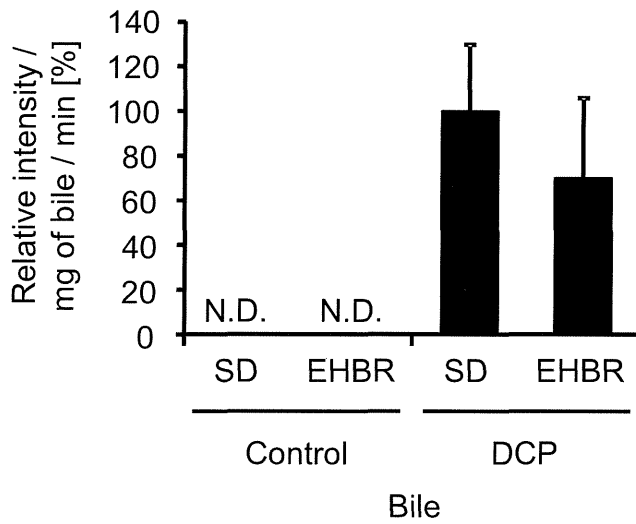


SD rat vs EHBR

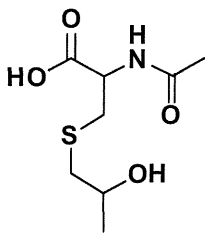
(Bile)

添付資料 3-5

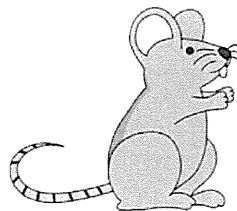
No.10



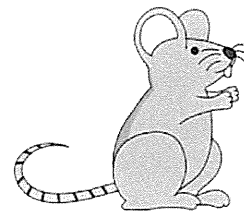
n = 6
Bars; S.E.M.
N.D.; Not detected



No.10



SD rat

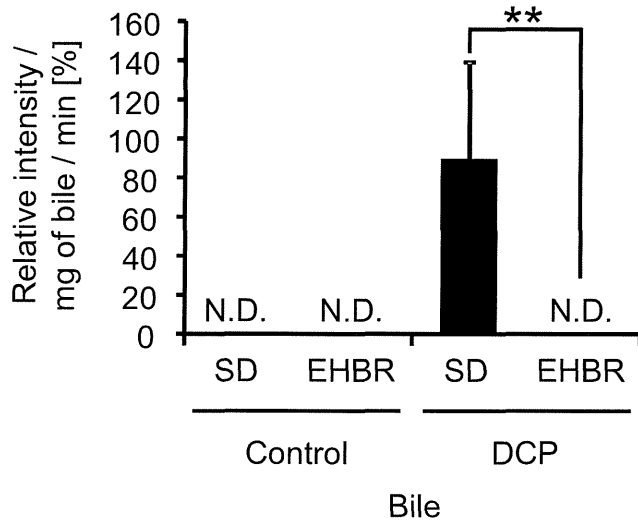


EHBR

(Bile)

添付資料 3-6

No.9

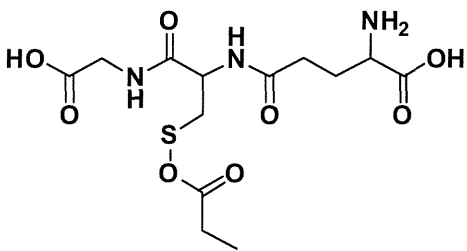


n = 6

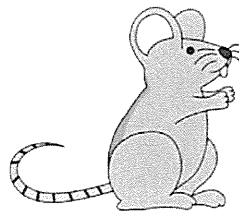
Bars; S.E.M.

N.D.; Not detected

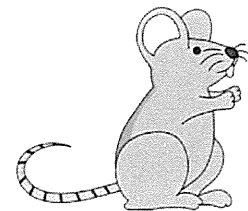
** p<0.01, Mann-Whitney U test



No.9



SD rat



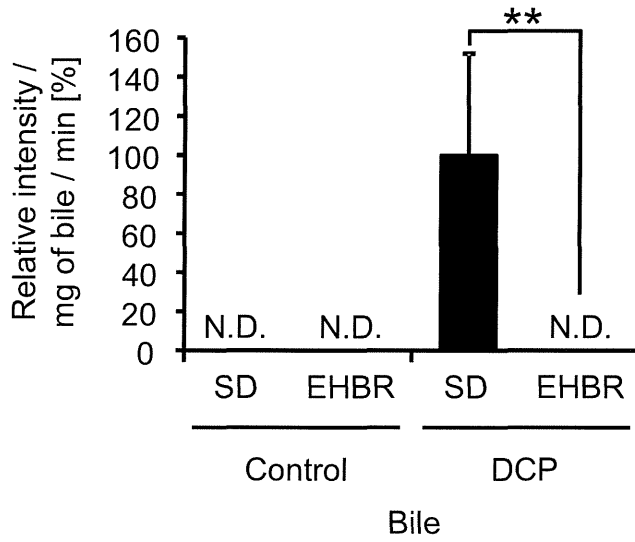
EHBR

vs

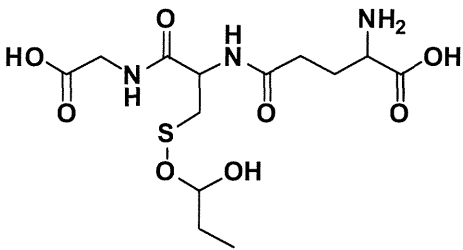
(Bile)

添付資料 3-7

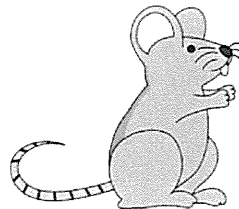
No.2



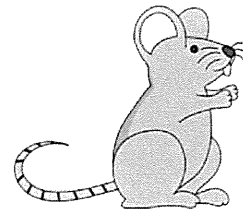
n = 6
 Bars; S.E.M.
 N.D.; Not detected
 ** p<0.01, Mann-Whitney U test



No.2



SD rat



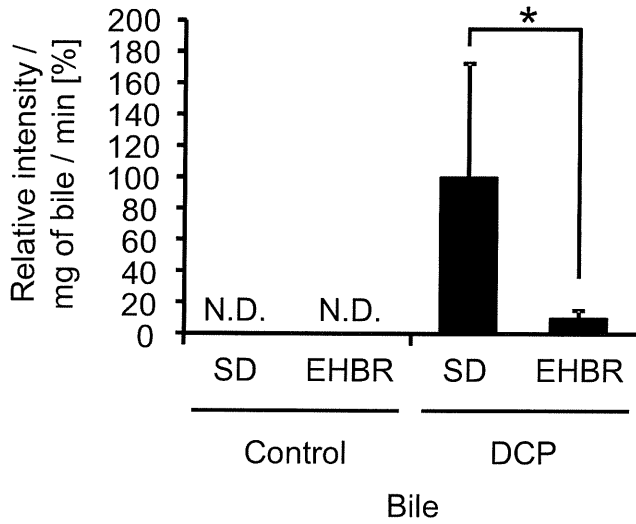
vs

EHBR

(Bile)

添付資料 3-8

No.4

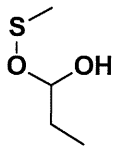


n = 6

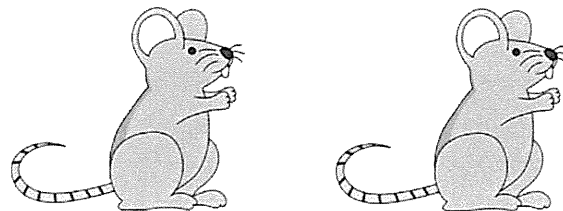
Bars; S.E.M.

N.D.; Not detected

** p<0.05, Mann-Whitney U test



No.4



SD rat

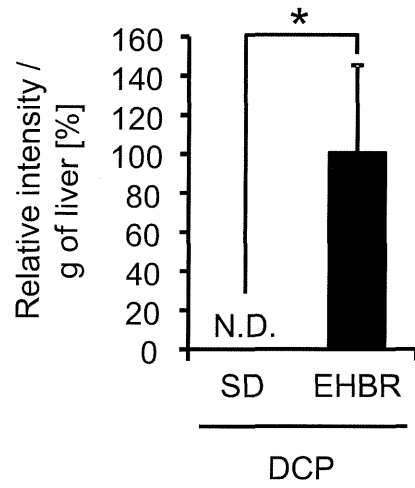
vs

EHBR

(Bile)

添付資料 4-1

No.12

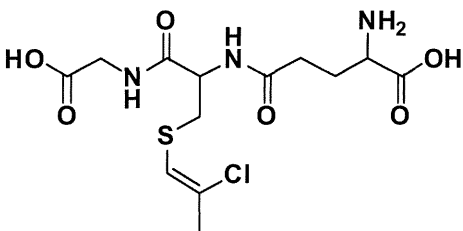


n = 3

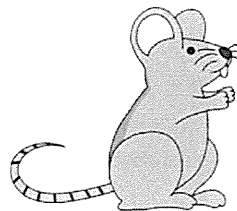
Bars; S.E.M.

N.D.; Not detected

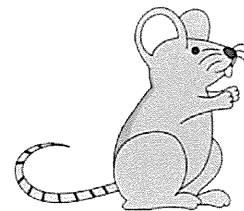
* p<0.05, Mann-Whitney U test



No.12



SD rat



EHBR

vs

(Liver)