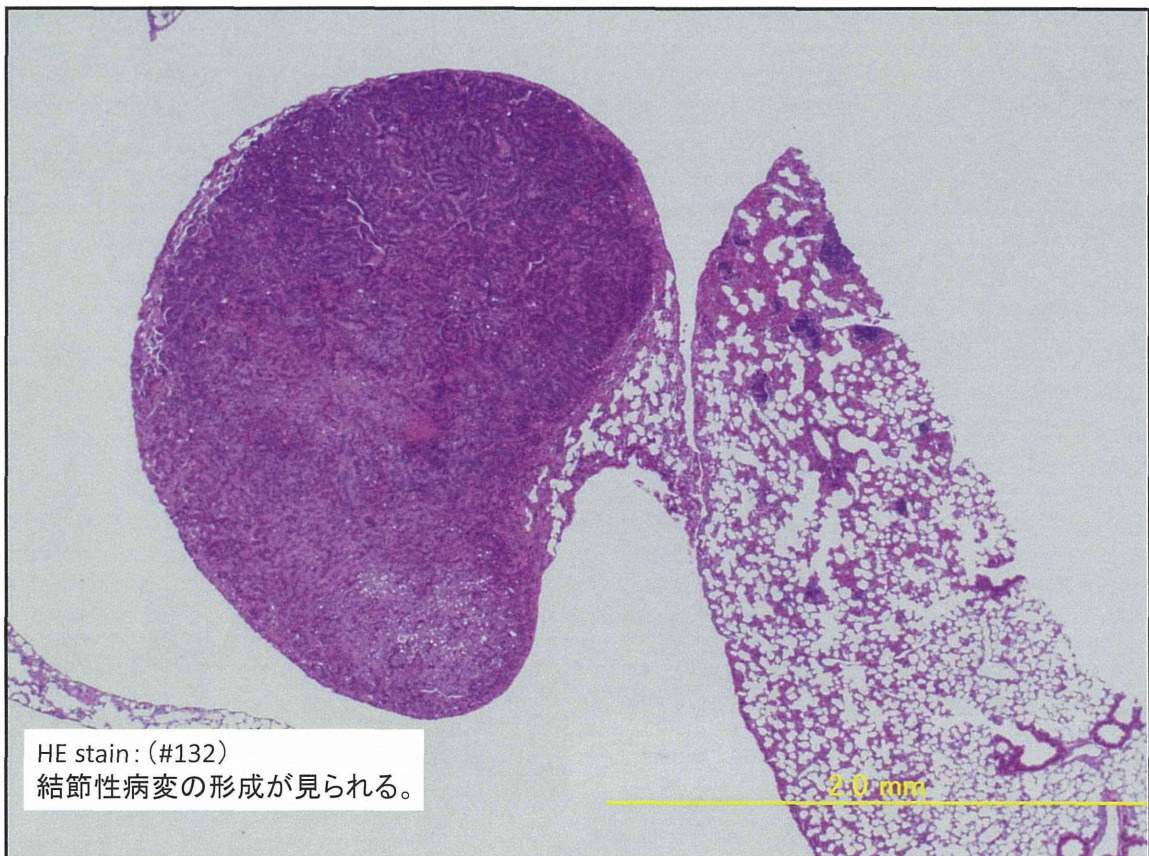
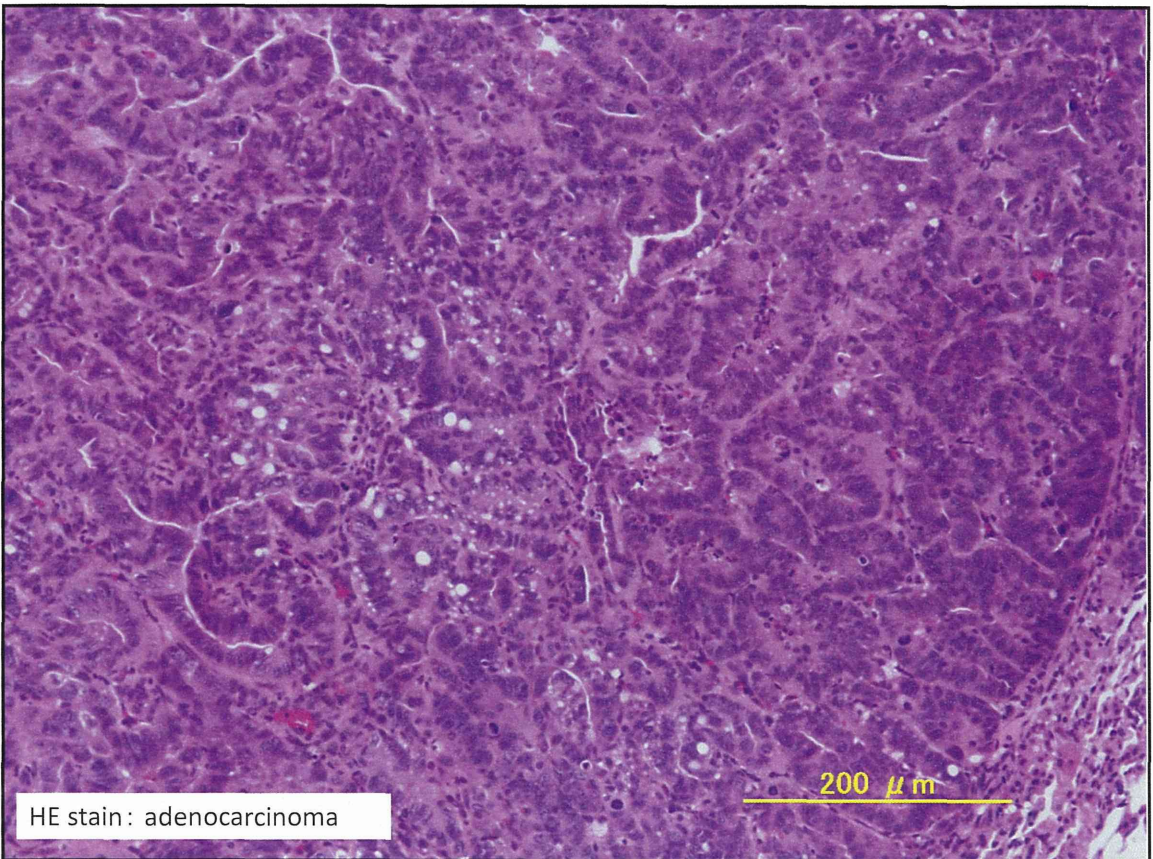
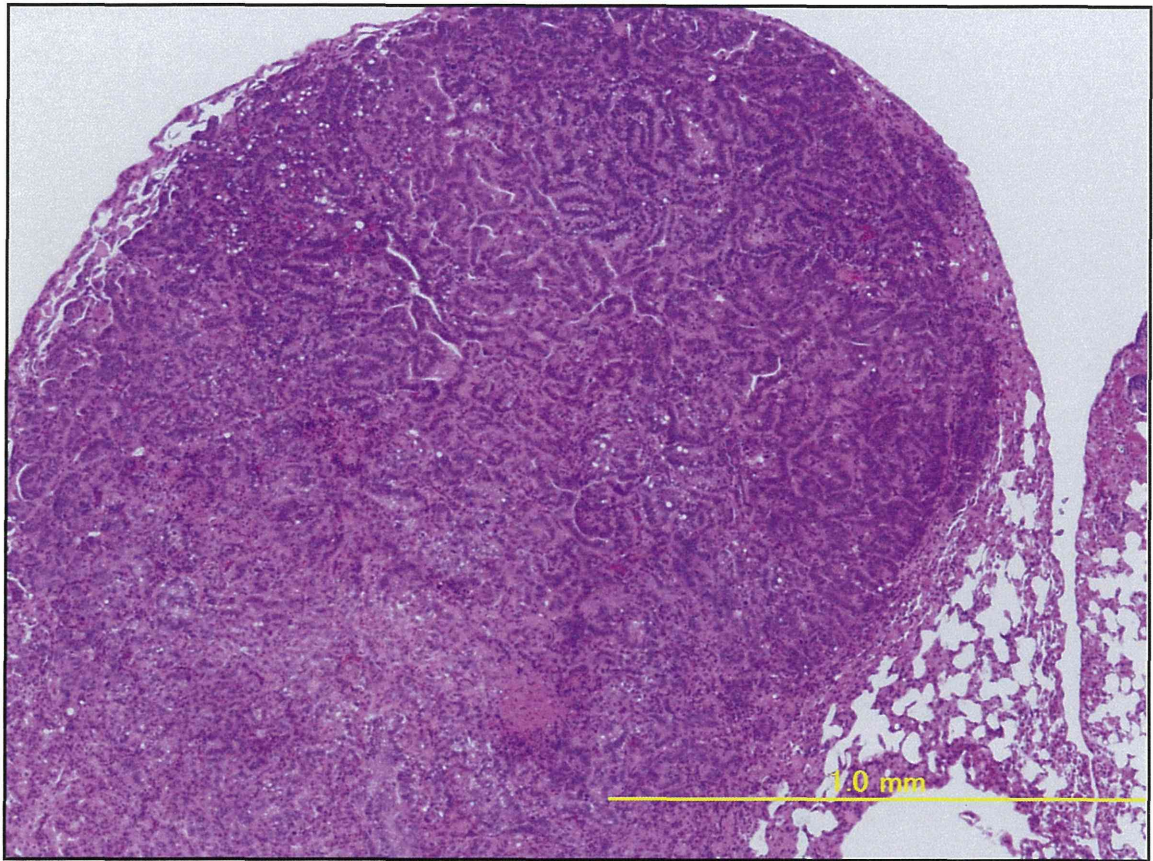
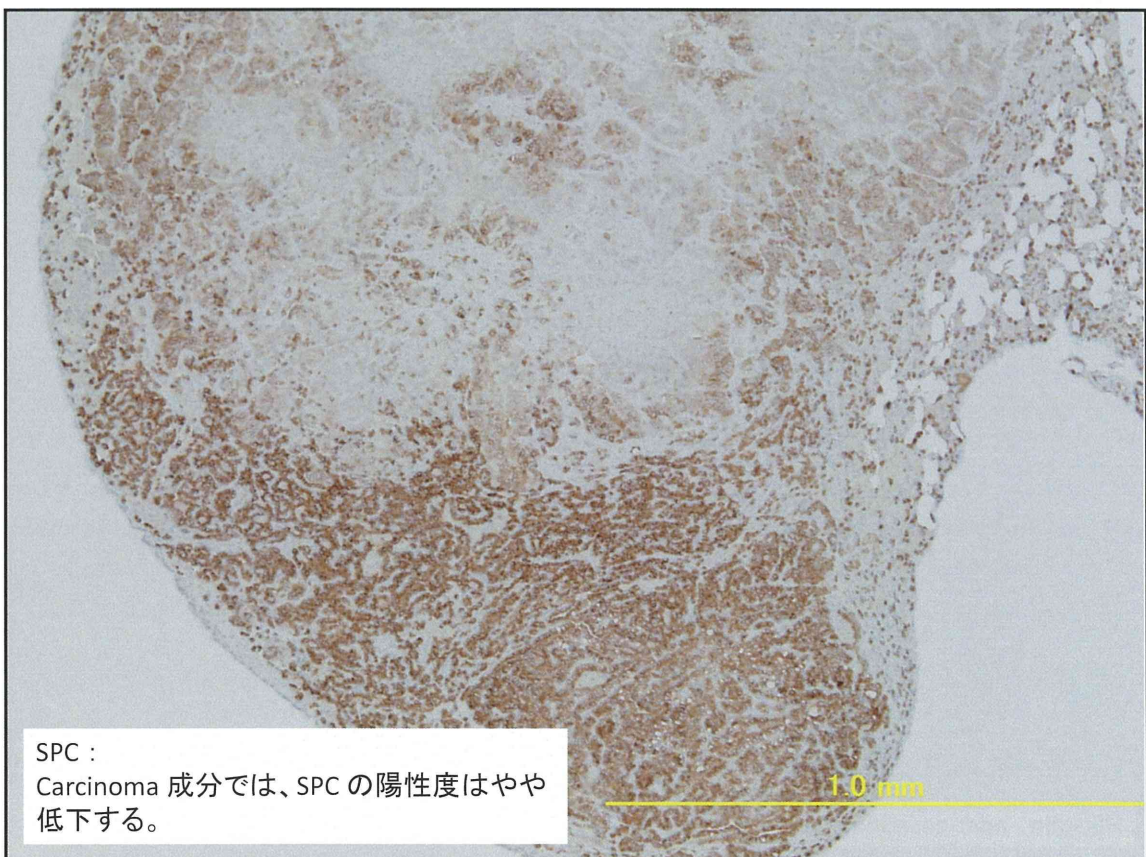


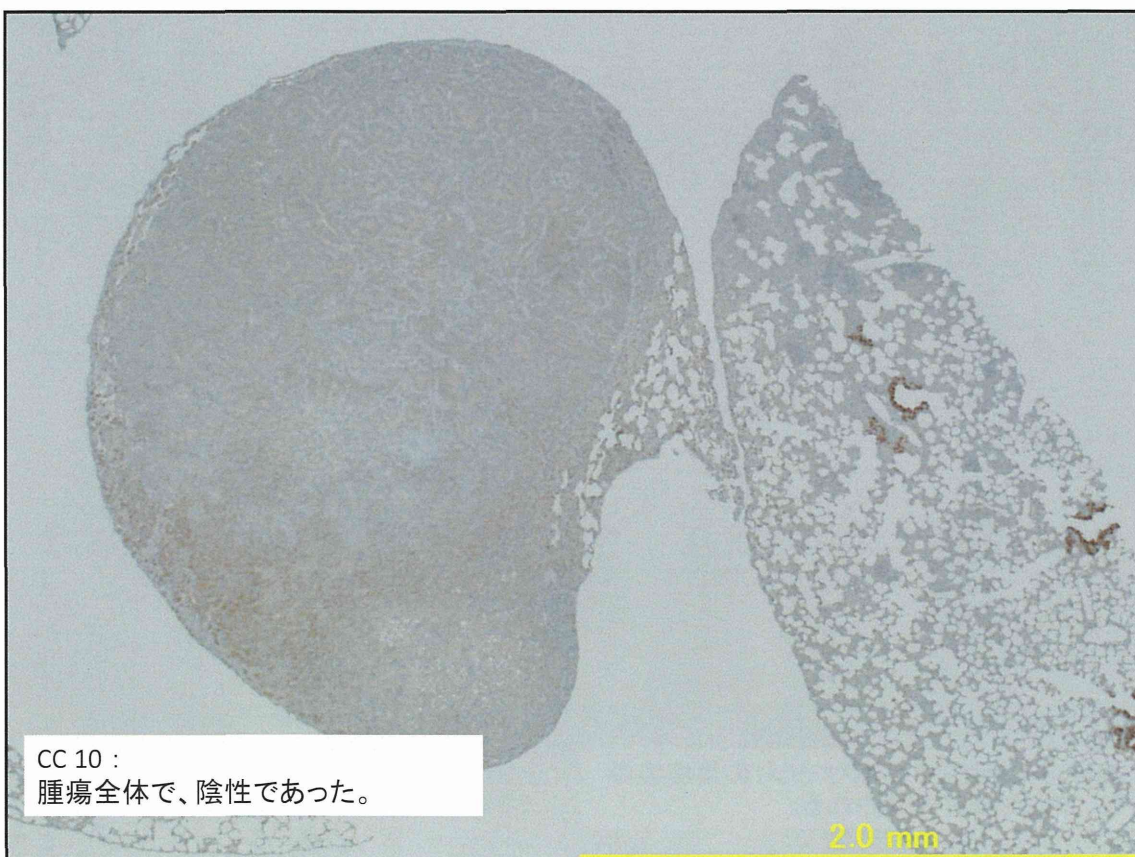
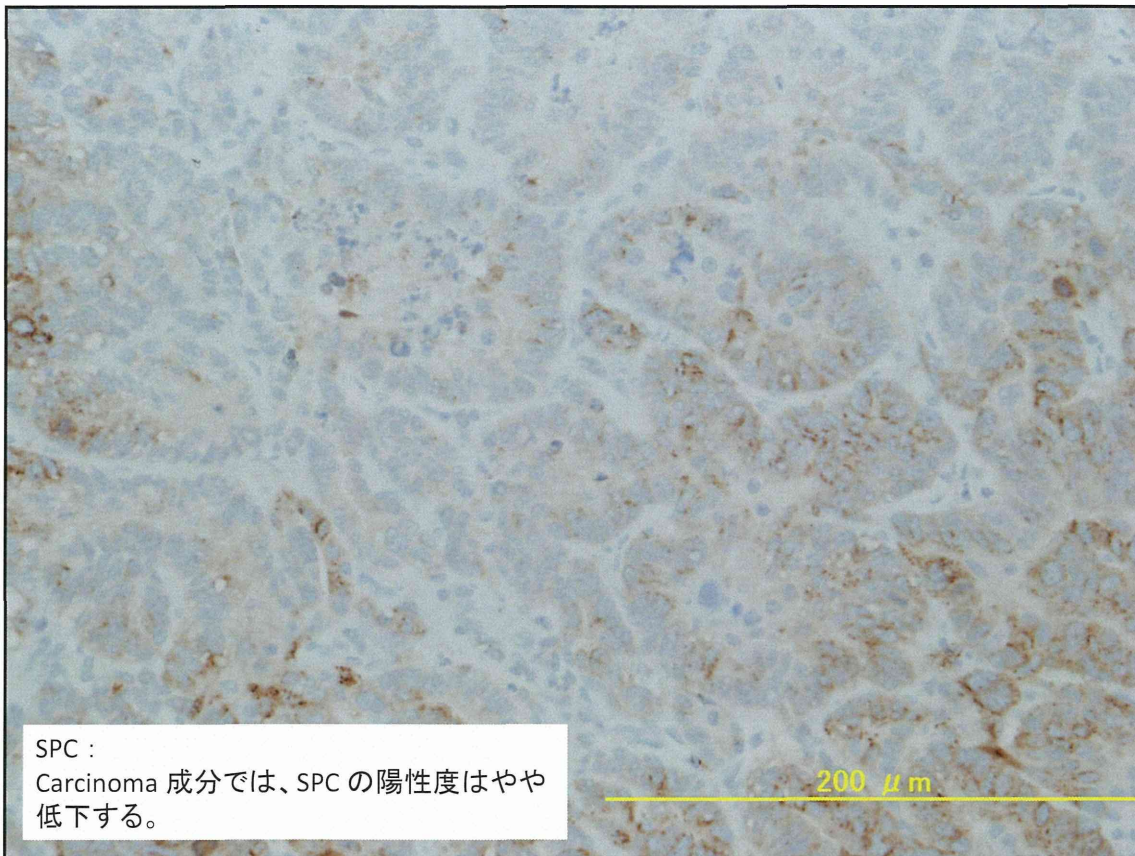
26 week : High dose

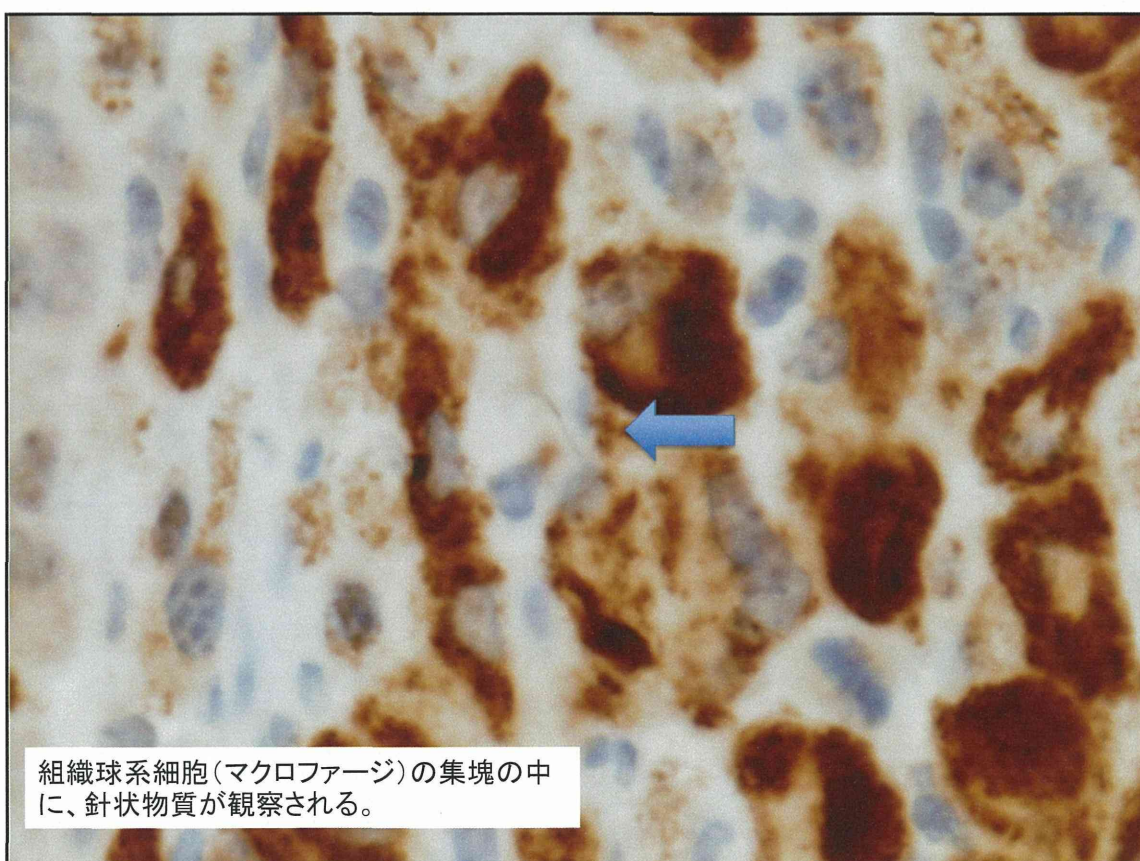
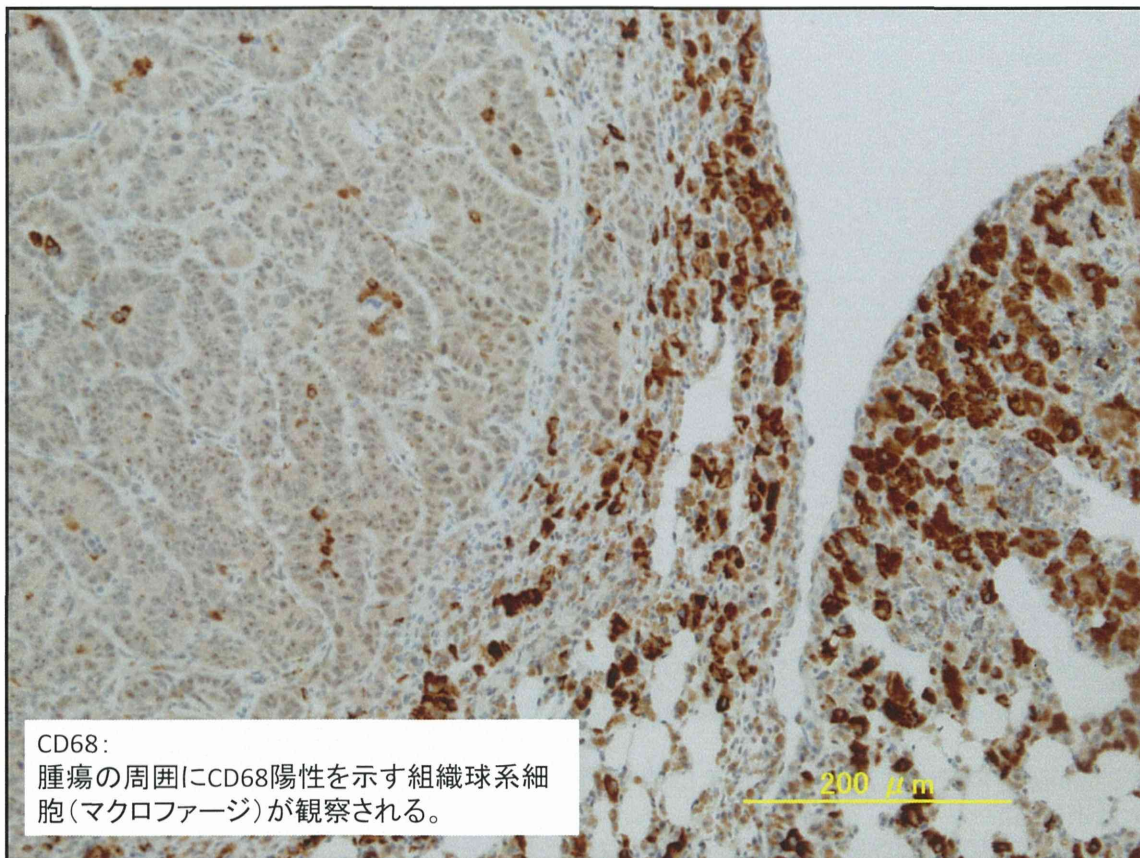
- $2\text{mg}/\text{m}^3$ の暴露条件 (High dose) で全身暴露投与後、26 week に剖検を行い、病理組織学的検索を行った結果を提示する。

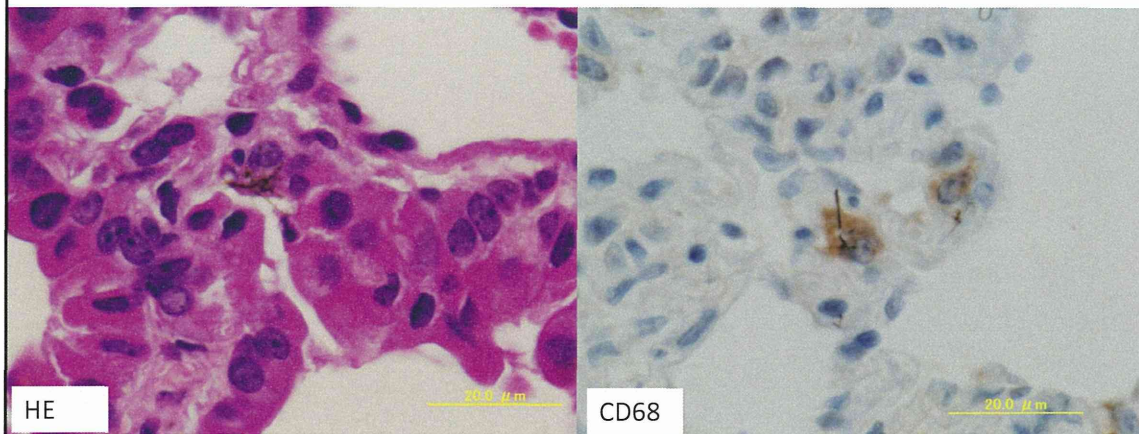




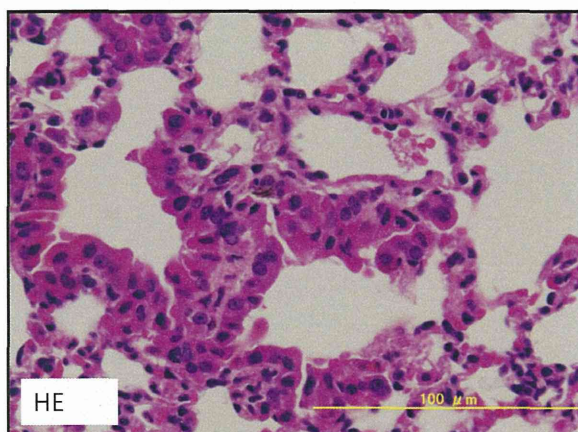




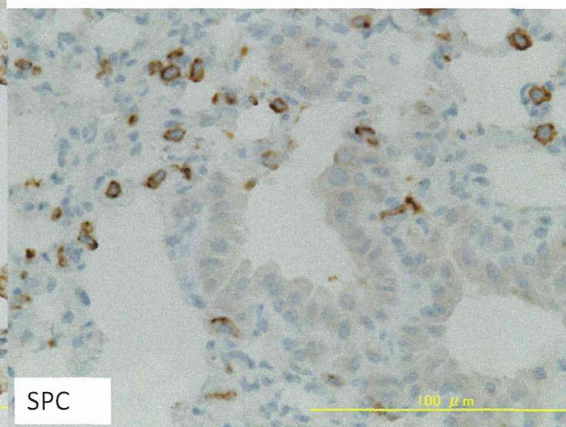
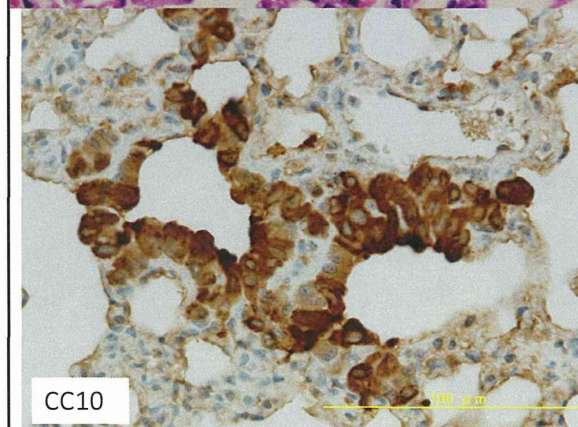




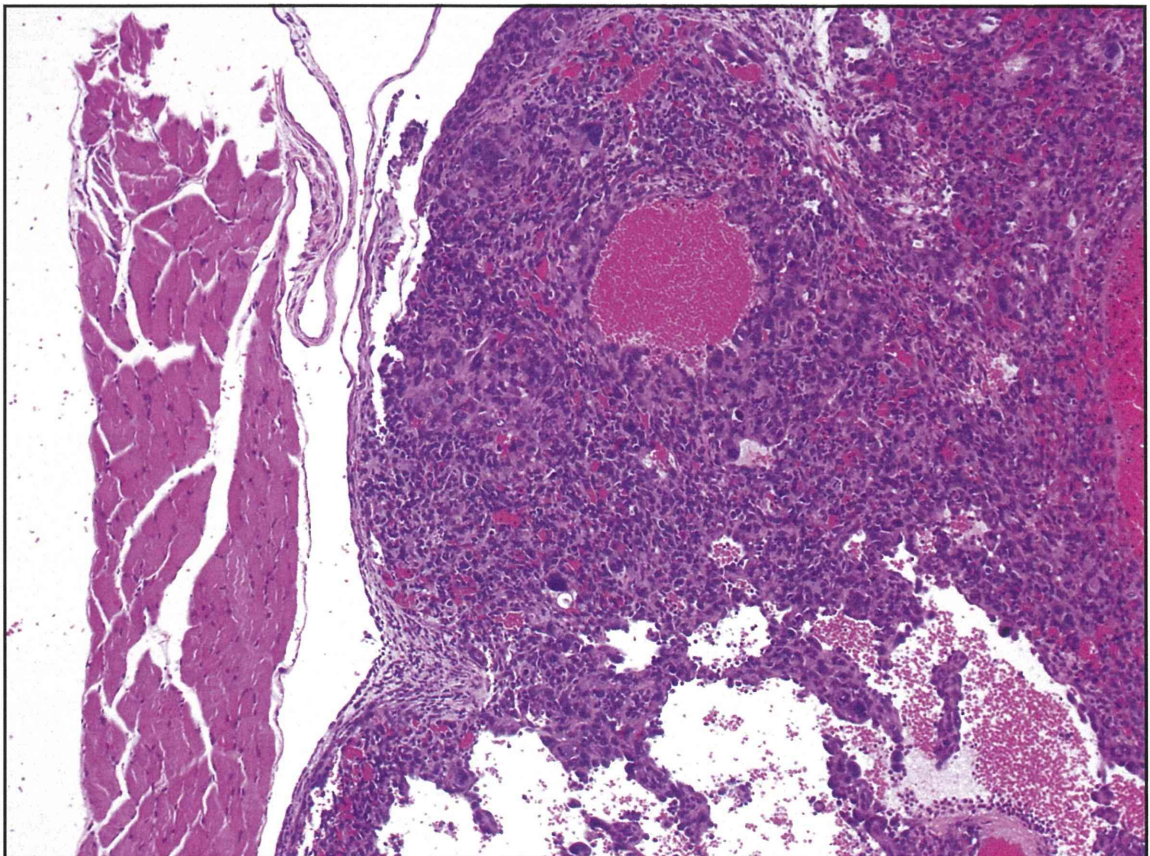
CD68 陽性を示すマクロファージが
T-CNTを貪食していることが明らか
になった。

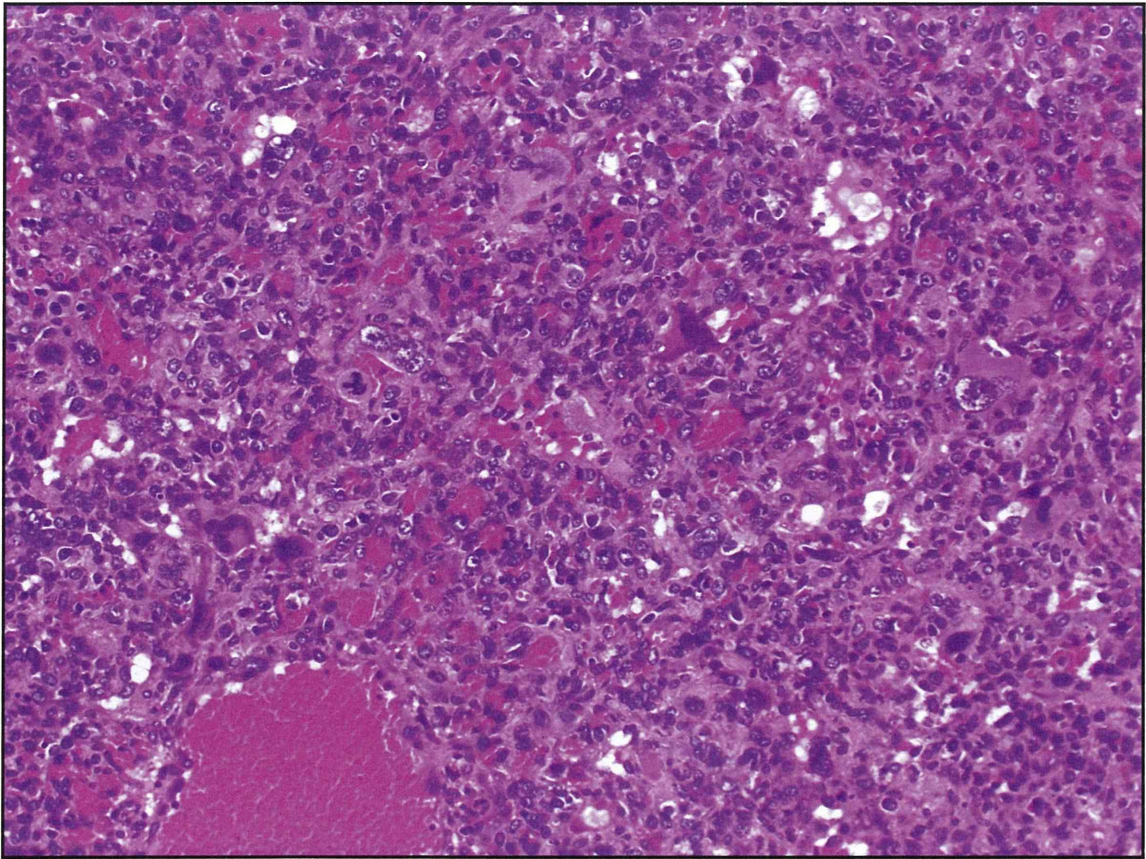


終末細気管支にCC10 陽性を示すクラ
細胞由来の上皮の増生が見られ、周囲
ではT-CNTを貪食しているマクロファ
ージが観察された。

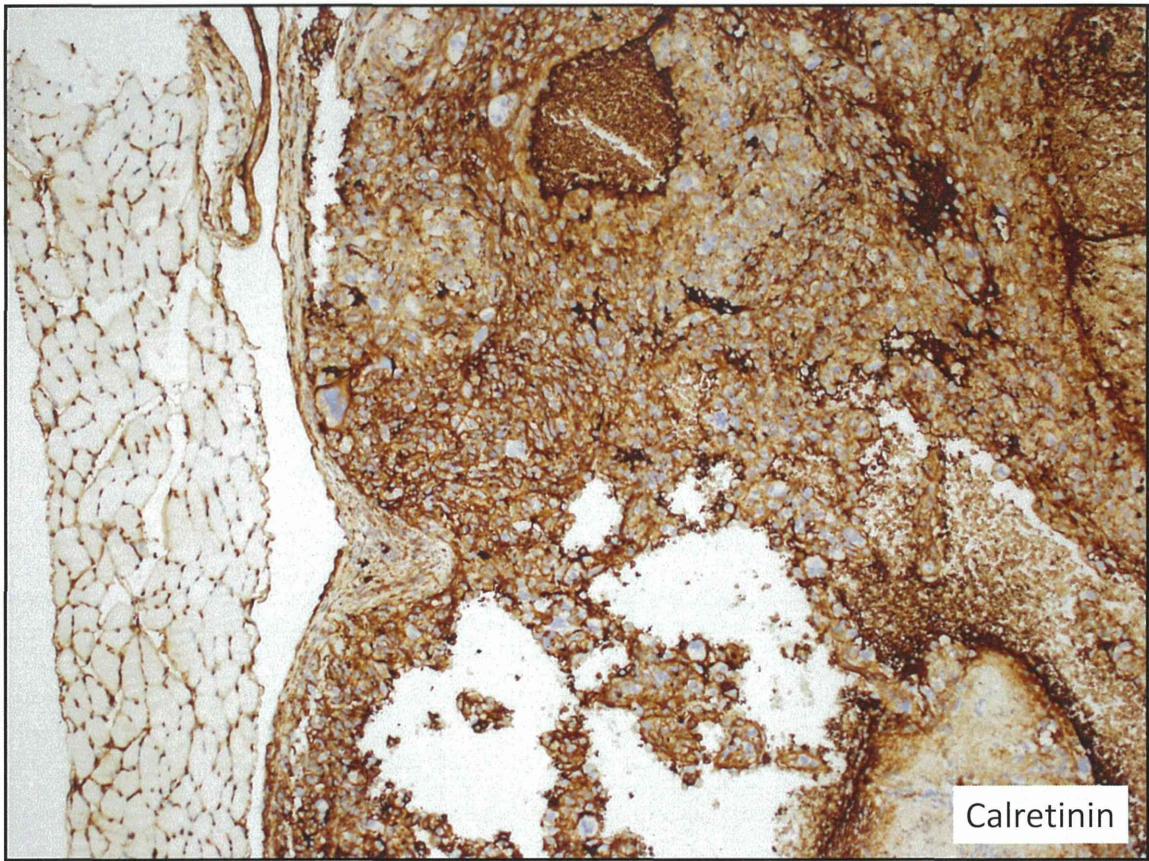


Calretinin他

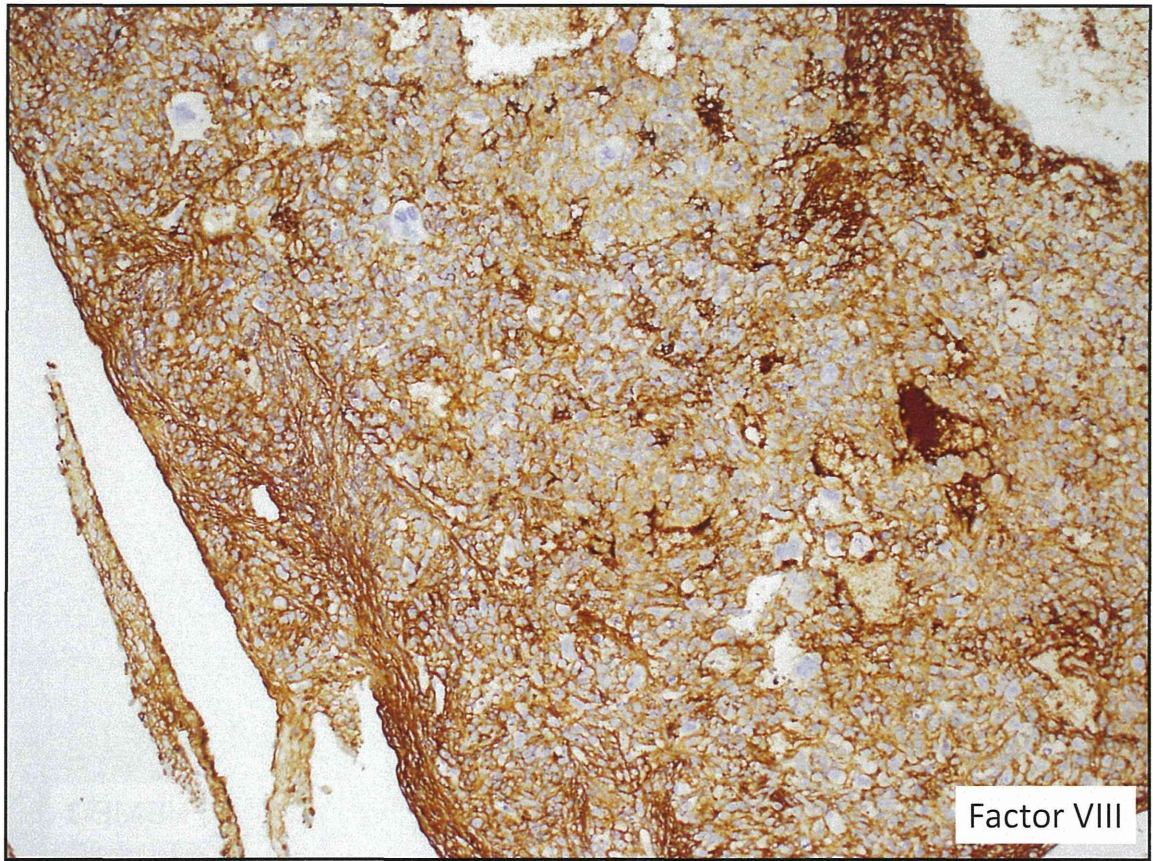




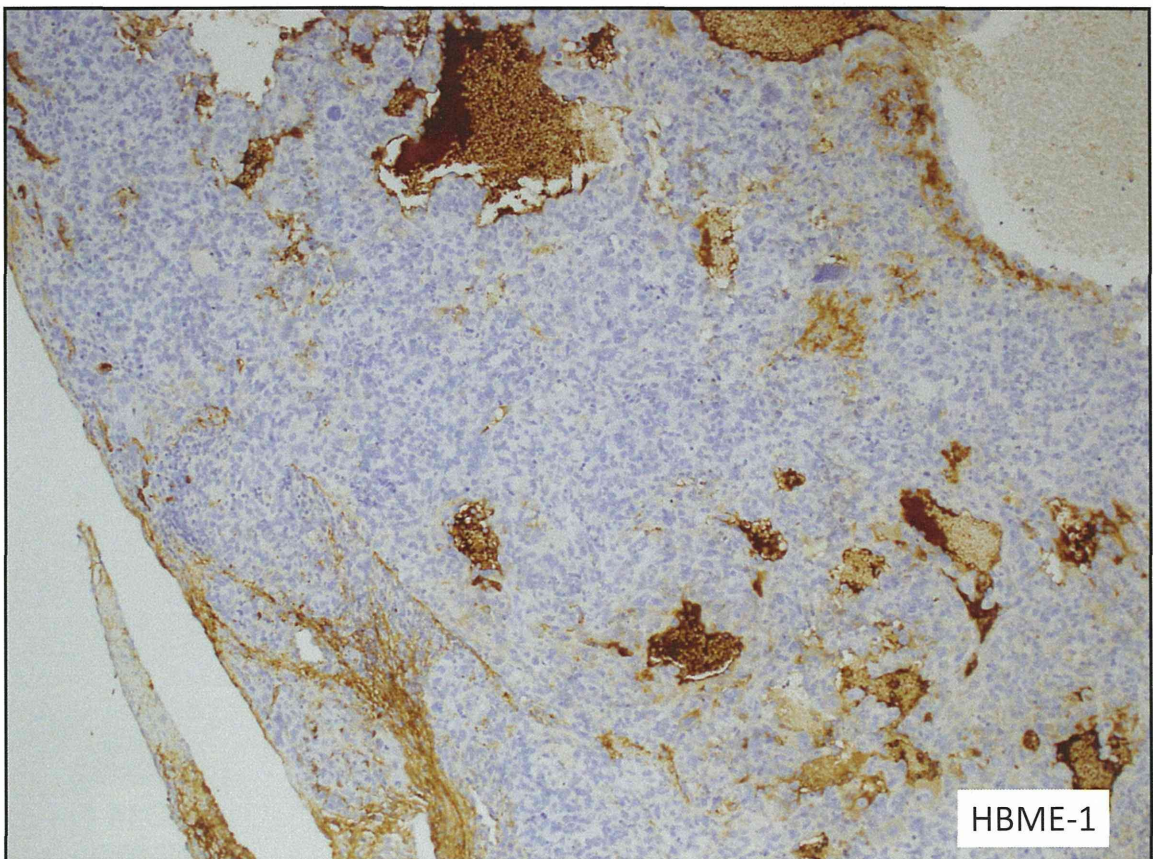
Malignant mesothelioma?
Or
Hemangiosarcoma?



Factor VIII ·



Factor VIII



HBME-1