

Fig. 1. Effect of TCDD on the hepatic expression of 5-lipoxygenase mRNA in male wild-type (WT) and BLT1-KO mice. Each bar represents the mean \pm S.E.M. of 4-5 mice. Significantly different from control; *, $p < 0.05$. Control value of 5-lipoxygenase mRNA level for wild-type (% of β -actin; mean \pm S.E.M., $N=5$) was $2.30 \times 10^{-3} \pm 3.70 \times 10^{-4}$.

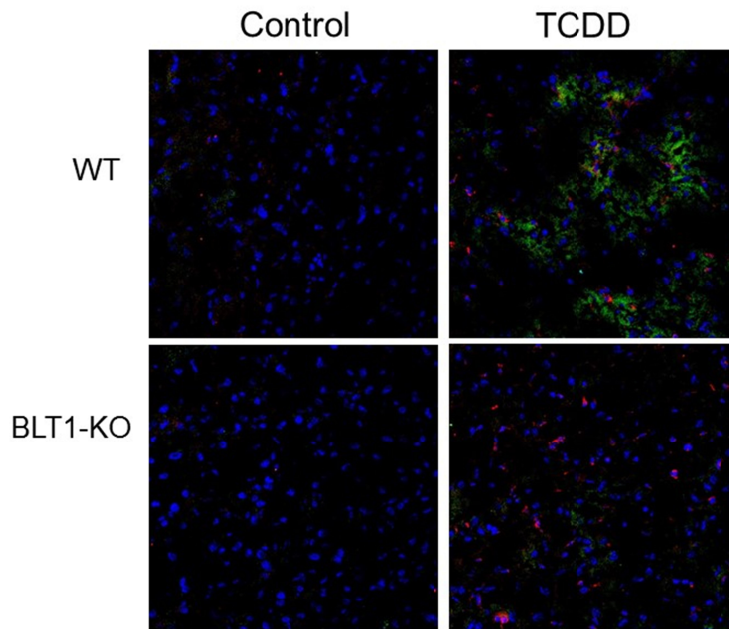


Fig. 2. Effect of TCDD on the infiltration of neutrophils to the liver in male wild-type (WT) and BLT1-KO mice. Liver sections were stained by anti-ly-6g (green), anti-5-lipoxygenase (red) and 4'6'-diamino-2-phenylindole (blue).

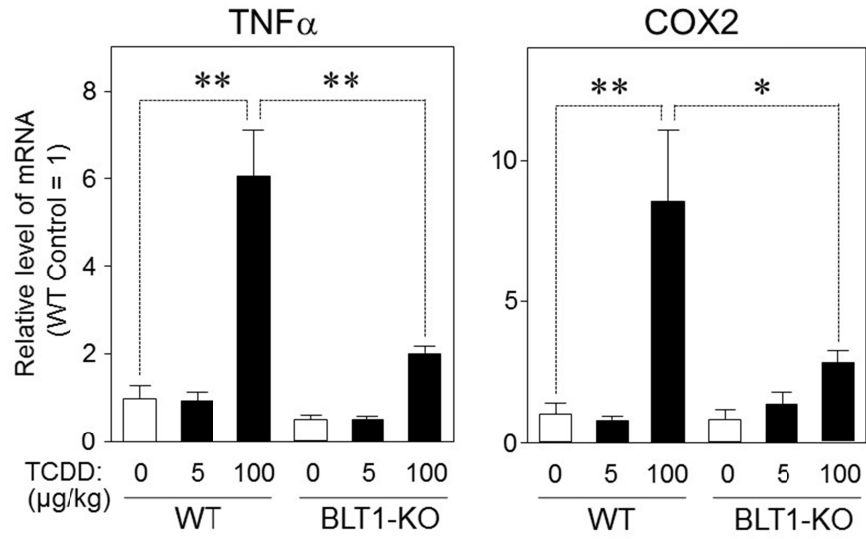


Fig. 3. Effect of TCDD on the hepatic expression of mRNAs coding for tumor-necrosis factor α (TNF α) and cyclooxygenase 2 (COX2) in male wild-type (WT) and BLT1-KO mice. Each bar represents the mean \pm S.E.M. of 4-5 mice. Significantly different between the pair indicated; *, $p < 0.01$ and **, $p < 0.001$. Control values of mRNA level for wild-type (% of β -actin; mean \pm S.E.M., $N=5$) were as follows: TNF α ($3.99 \times 10^{-3} \pm 1.13 \times 10^{-3}$) and COX2 ($1.12 \times 10^{-3} \pm 4.20 \times 10^{-4}$).

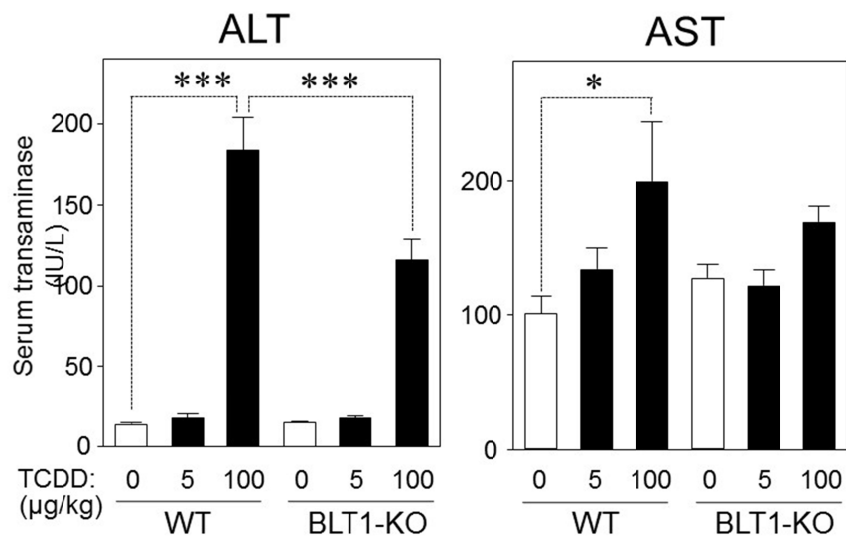


Fig. 4. Effect of TCDD on the serum transaminases in male wild-type and BLT1-KO mice. Each bar represents the mean \pm S.E.M. of 4-10 mice. Significantly different between the pair indicated; *, $p < 0.05$ and ***, $p < 0.001$.

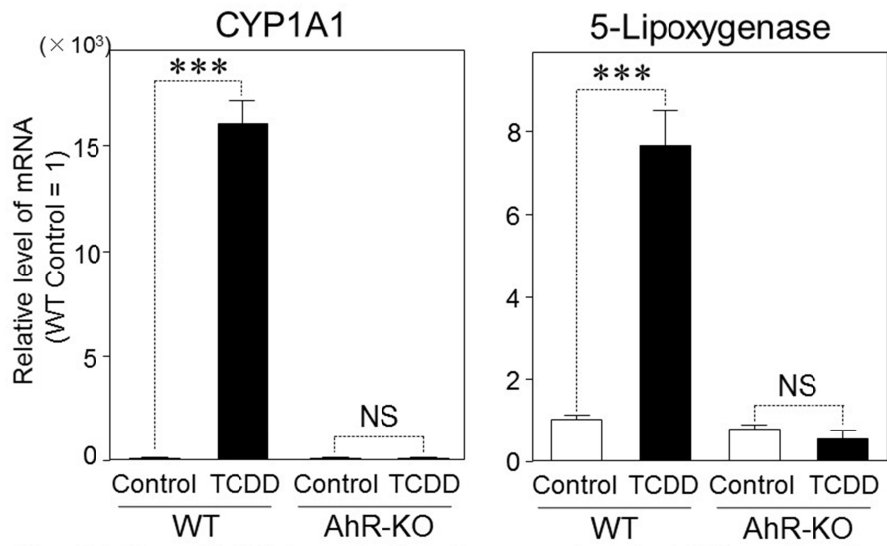


Fig. 5. Effect of TCDD on the hepatic expression of mRNAs coding for CYP1A1 and 5-lipoxygenase in male wild-type and AhR-KO rats. Each bar represents the mean \pm S.E.M. of 3-6 rats. Significantly different between the pair indicated; ***, $p < 0.001$. Control values of mRNA level for wild-type (% of β -actin; mean \pm S.E.M., $N=6$) were: CYP1A1, $3.13 \times 10^{-2} \pm 5.18 \times 10^{-3}$ and 5-lipoxygenase, $8.50 \times 10^{-4} \pm 9.08 \times 10^{-5}$.