

Figure 14 Relative spleen weights of SHRSP and WKY rats fed diets containing 7 w/w% Tokuho oils for 4 weeks

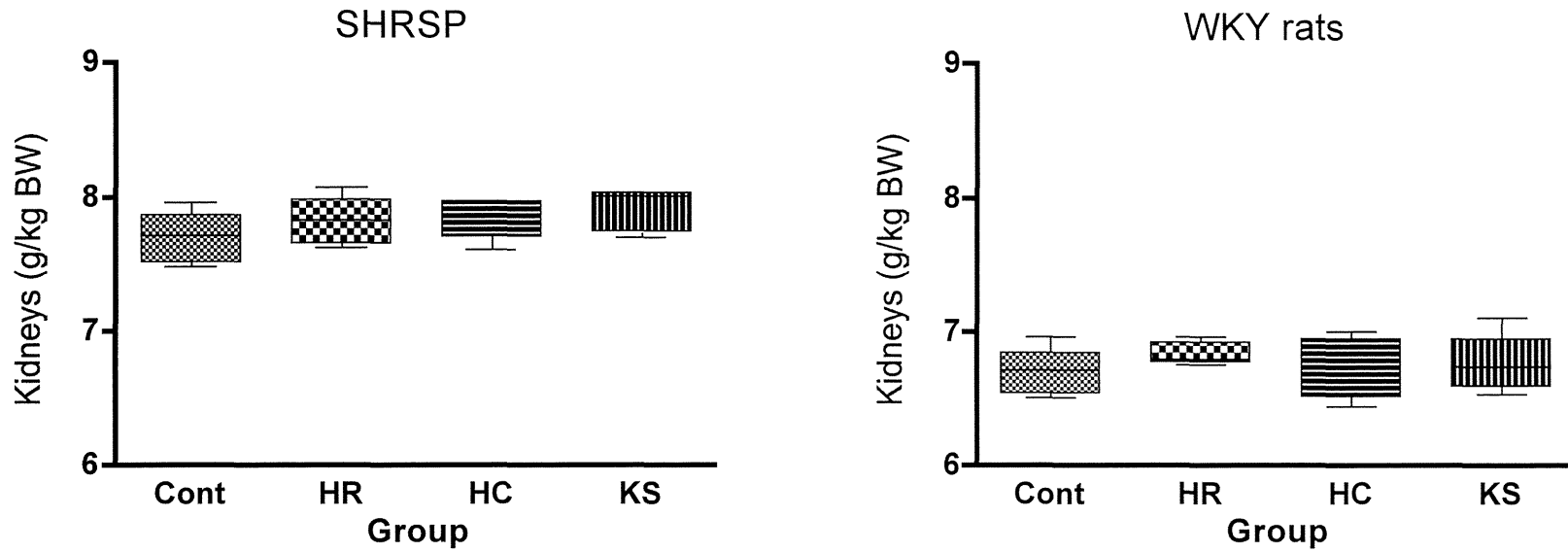


Figure 15 Relative kidney weights of SHRSP and WKY rats fed diets containing 7 w/w% Tokuhio oils for 4 weeks

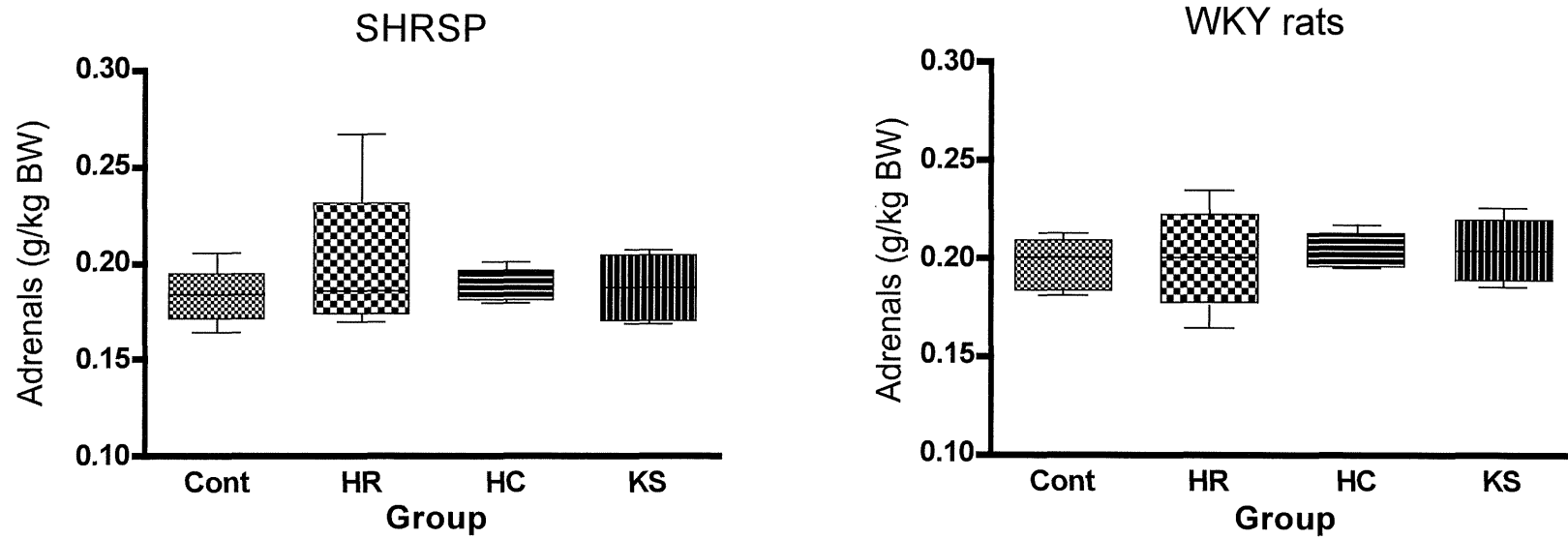


Figure 16 Relative adrenal weights of SHRSP and WKY rats fed diets containing 7 w/w% Tokuho oils for 4 weeks

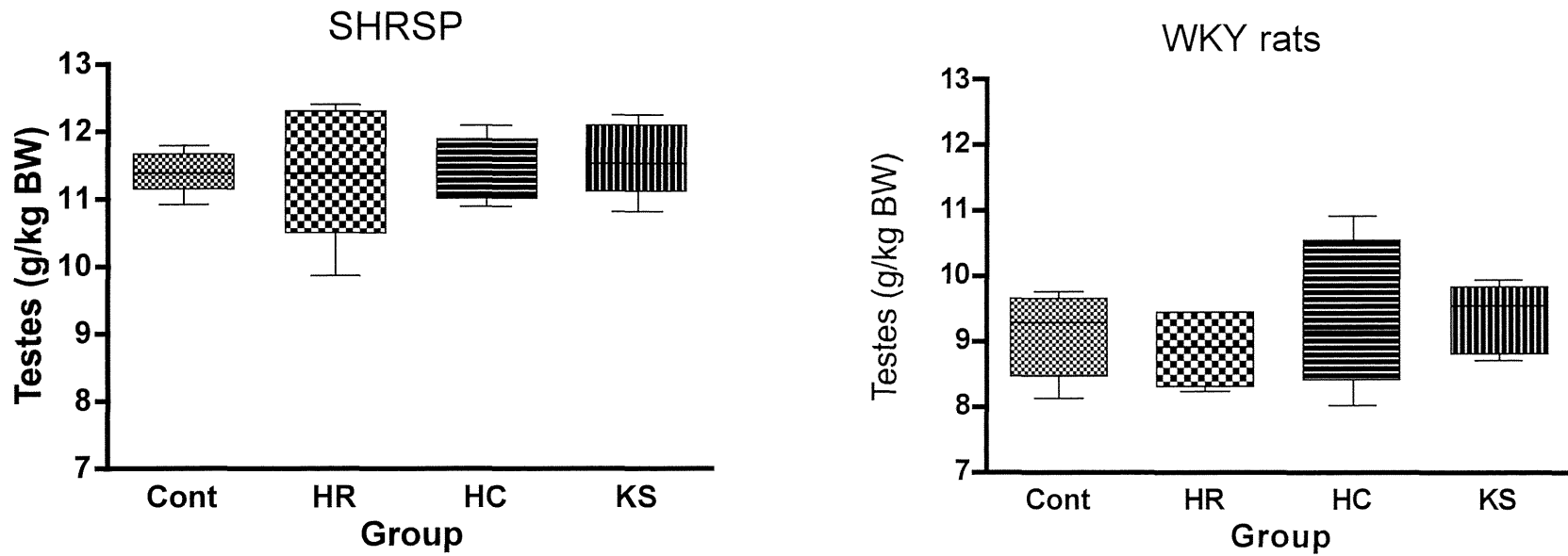


Figure 17 Relative testis weights of SHRSP and WKY rats fed diets containing 7 w/w% Tokuho oils for 4 weeks

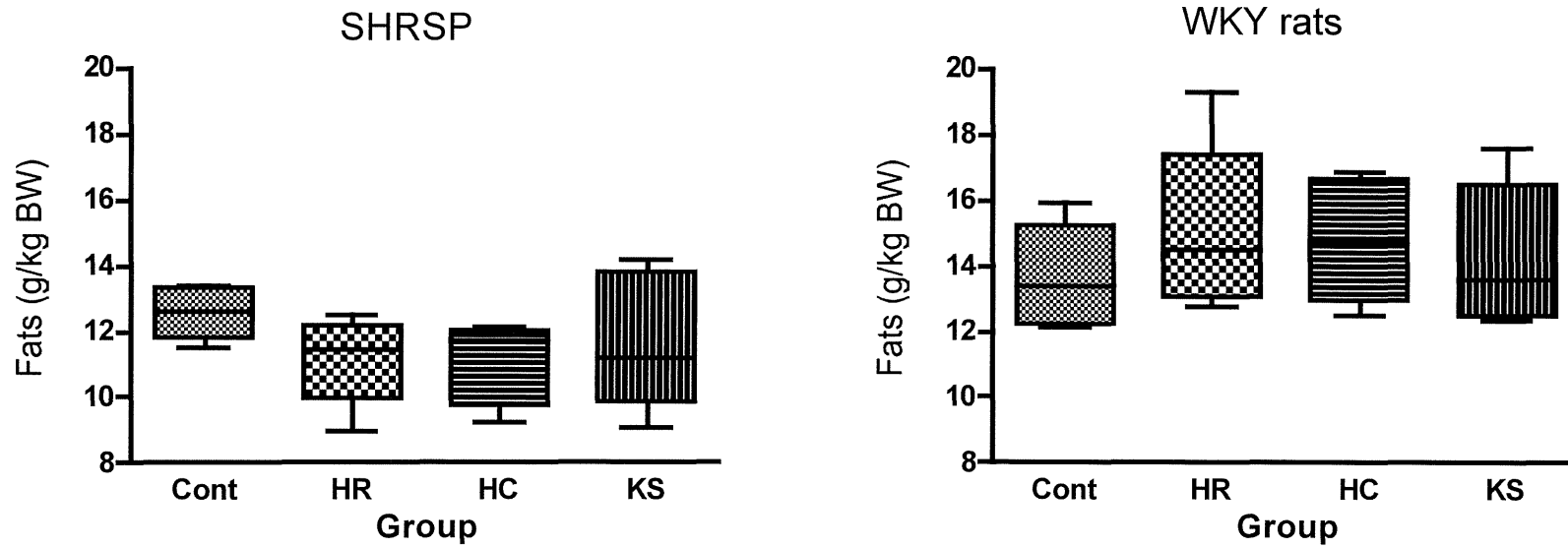


Figure 18 Relative epididymal fat weights of SHRSP and WKY rats fed diets containing 7 w/w% Tokuho oils for 4 weeks

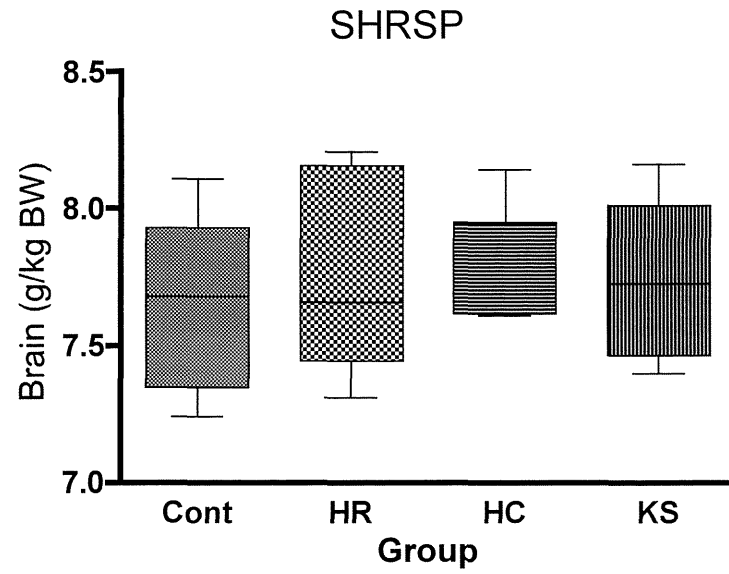


Figure 19 Relative brain weights of SHRSP and WKY rats fed diets containing 7 w/w% Tokuho oils for 4 weeks

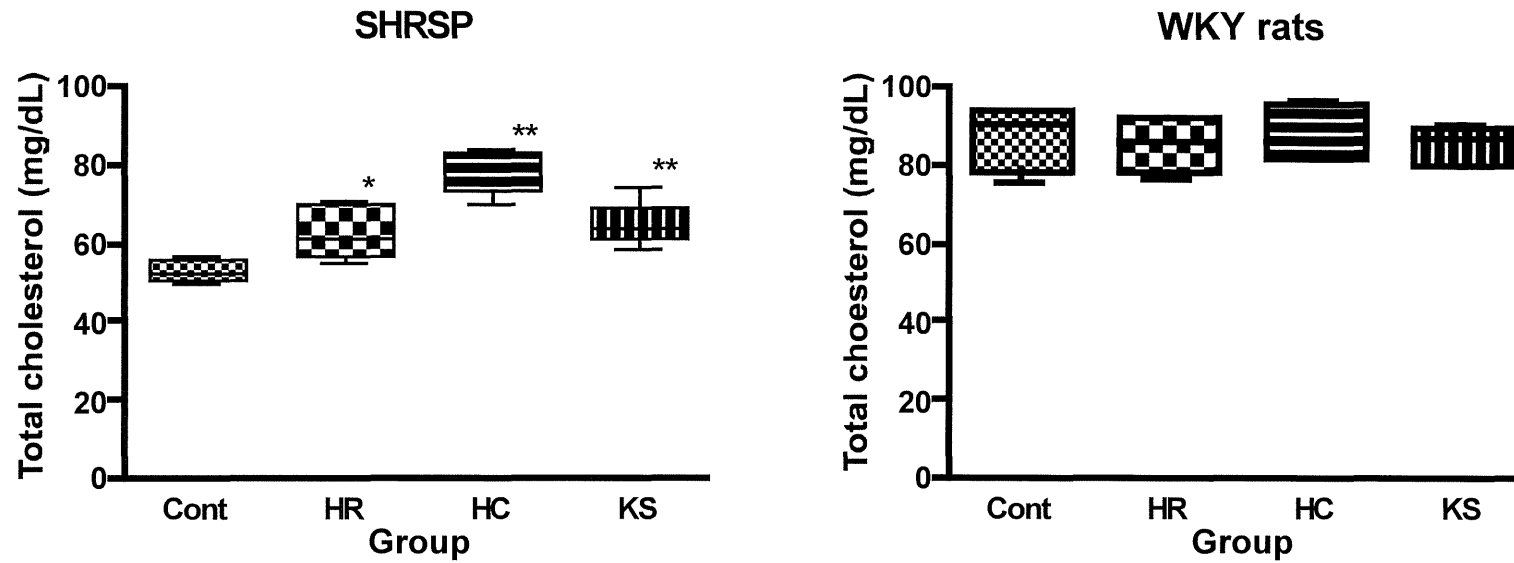


Figure 20 Plasma total cholesterol levels of SHRSP and WKY rats fed diets containing 7 w/w% Tokuho oils for 4 weeks
**p,0.01, *p<0.05, significantly different from the value of Cont group (Dunnett's test)

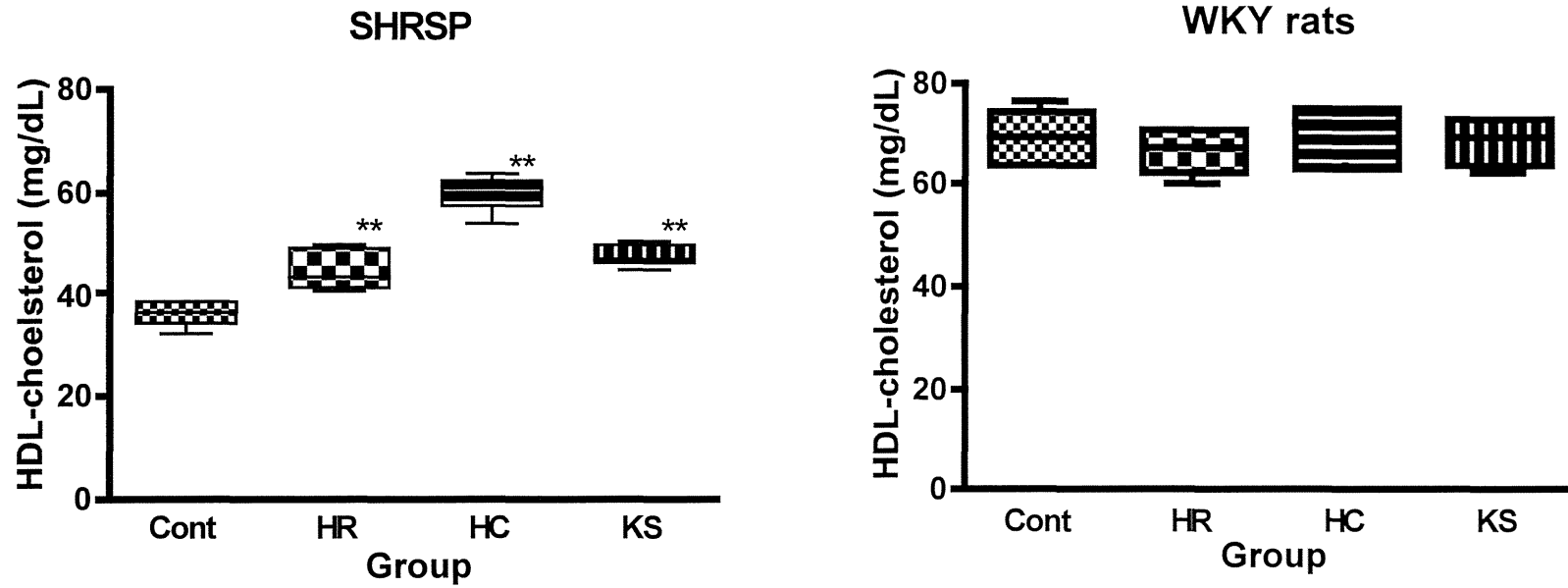


Figure 21 Plasma HDL-cholesterol levels of SHRSP and WKY rats fed diets containing 7 w/w% Tokuho oils for 4 weeks
**p,0.01, significantly different from the value of Cont group (Dunnett's test)

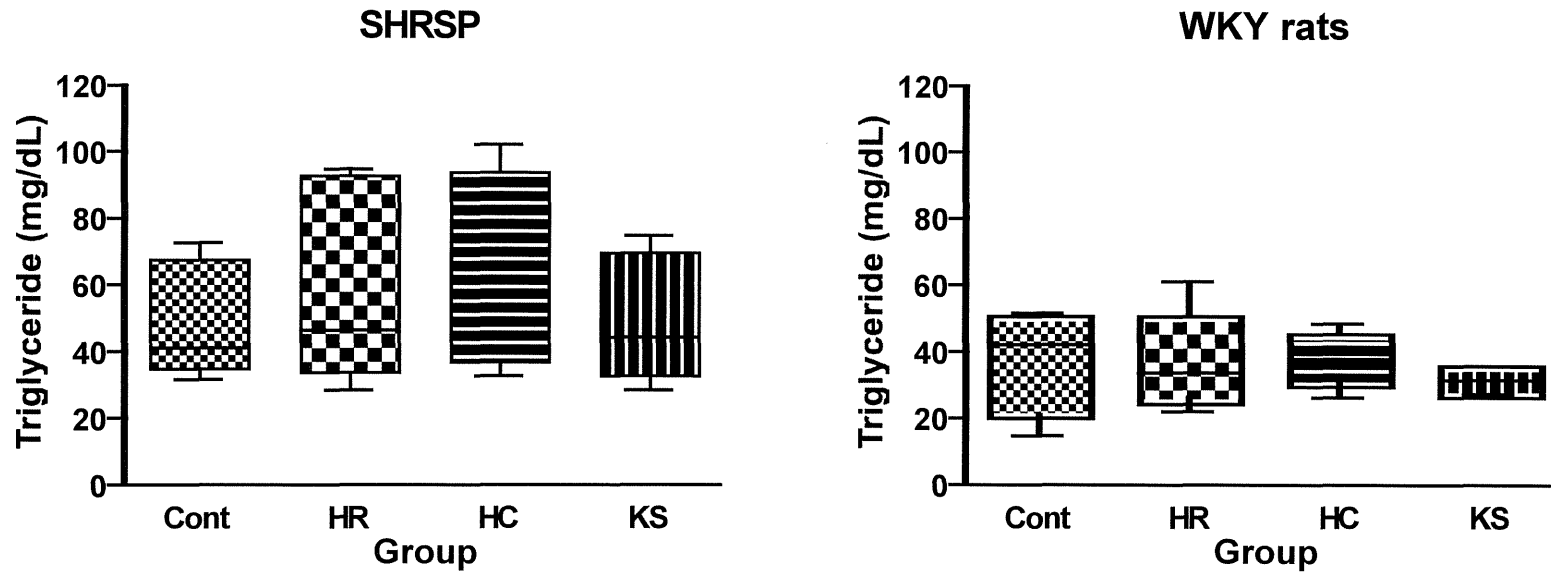


Figure 22 plasma triglyceride levels of SHRSP and WKY rats fed diets containing 7 w/w% Tokuho oils for 4 weeks

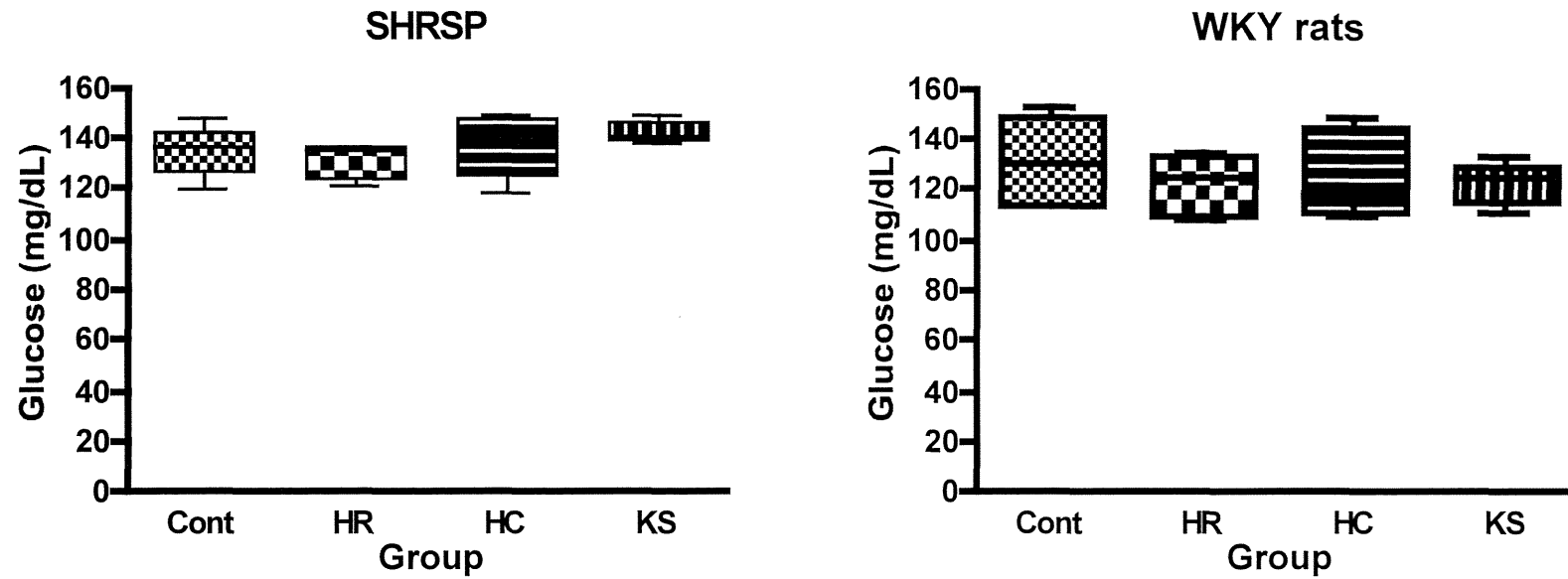


Figure 23 Plasma glucose levels of SHRSP and WKY rats fed diets containing 7 w/w% Tokuho oils for 4 weeks

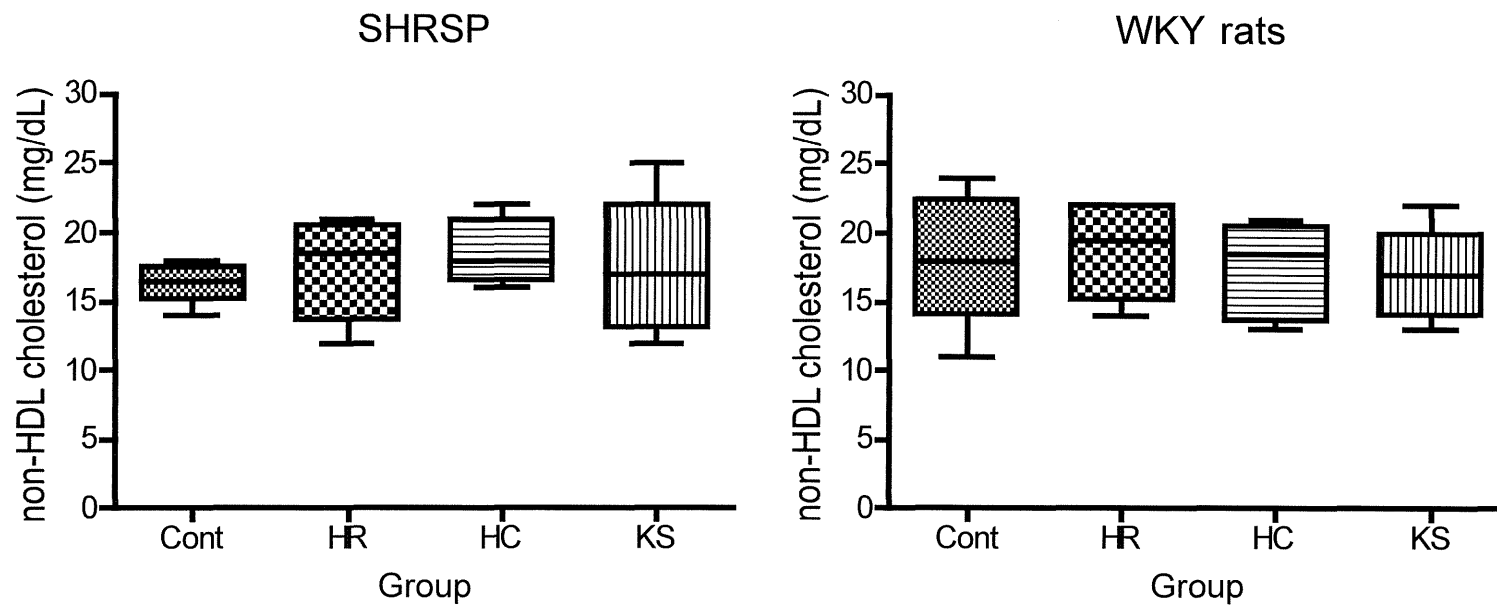


Figure 24 non-HDL cholesterol levels of SHRSP and WKY rats fed diets containing 7 w/w% Tokuho oils for 4 weeks

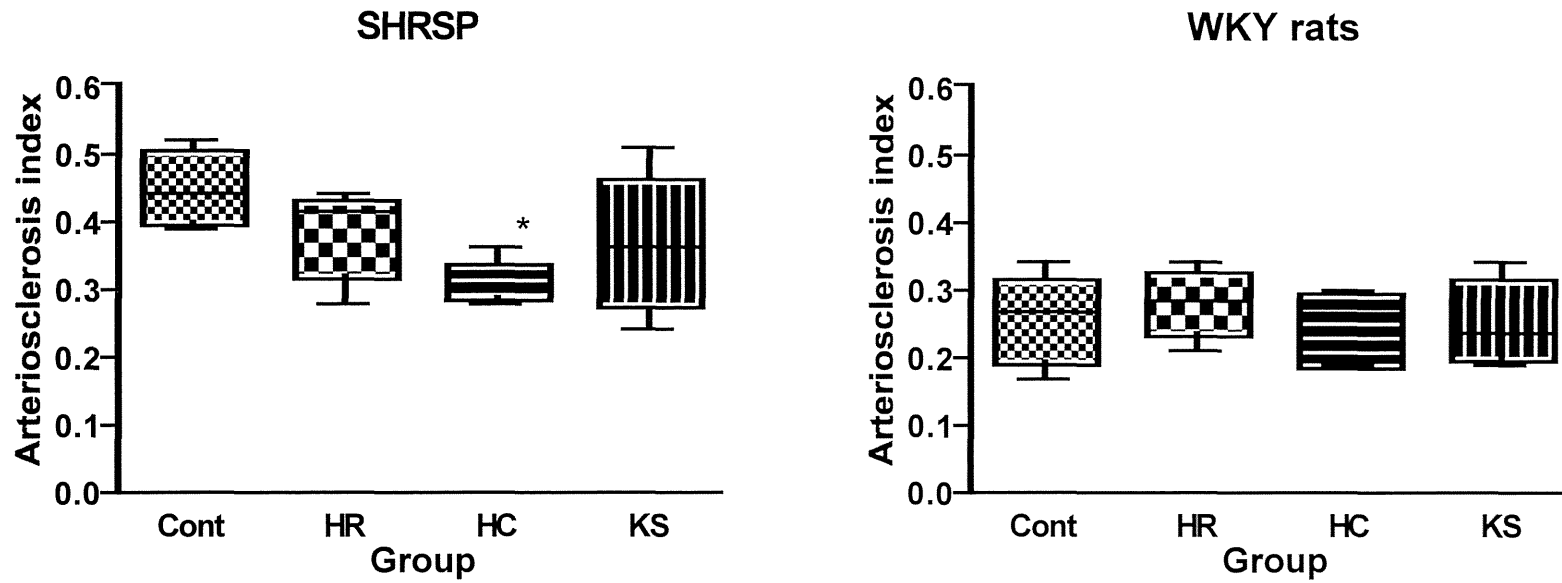


Figure 25 Arteriosclerosis indexes of SHRSP and WKY rats fed diets containing 7 w/w% Tokuho oils for 4 weeks
Arteriosclerosis index=(total cholesterol – HDL-cholesterol)/HDL-cholesterol
*p<0.05, significantly different from the value of Control group (Dunnett's tset)

パスウェイ解析の図の説明

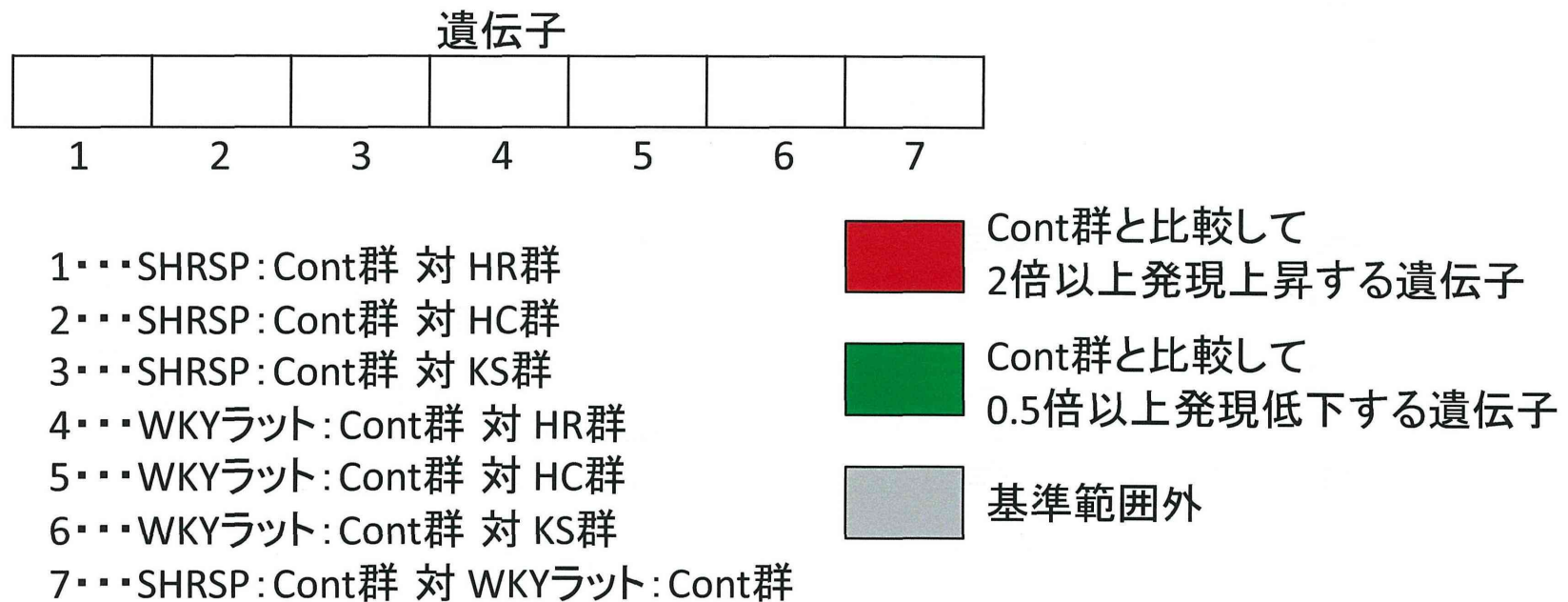


Figure 26 パスウェイ解析の図 (Figure 5~21) の説明

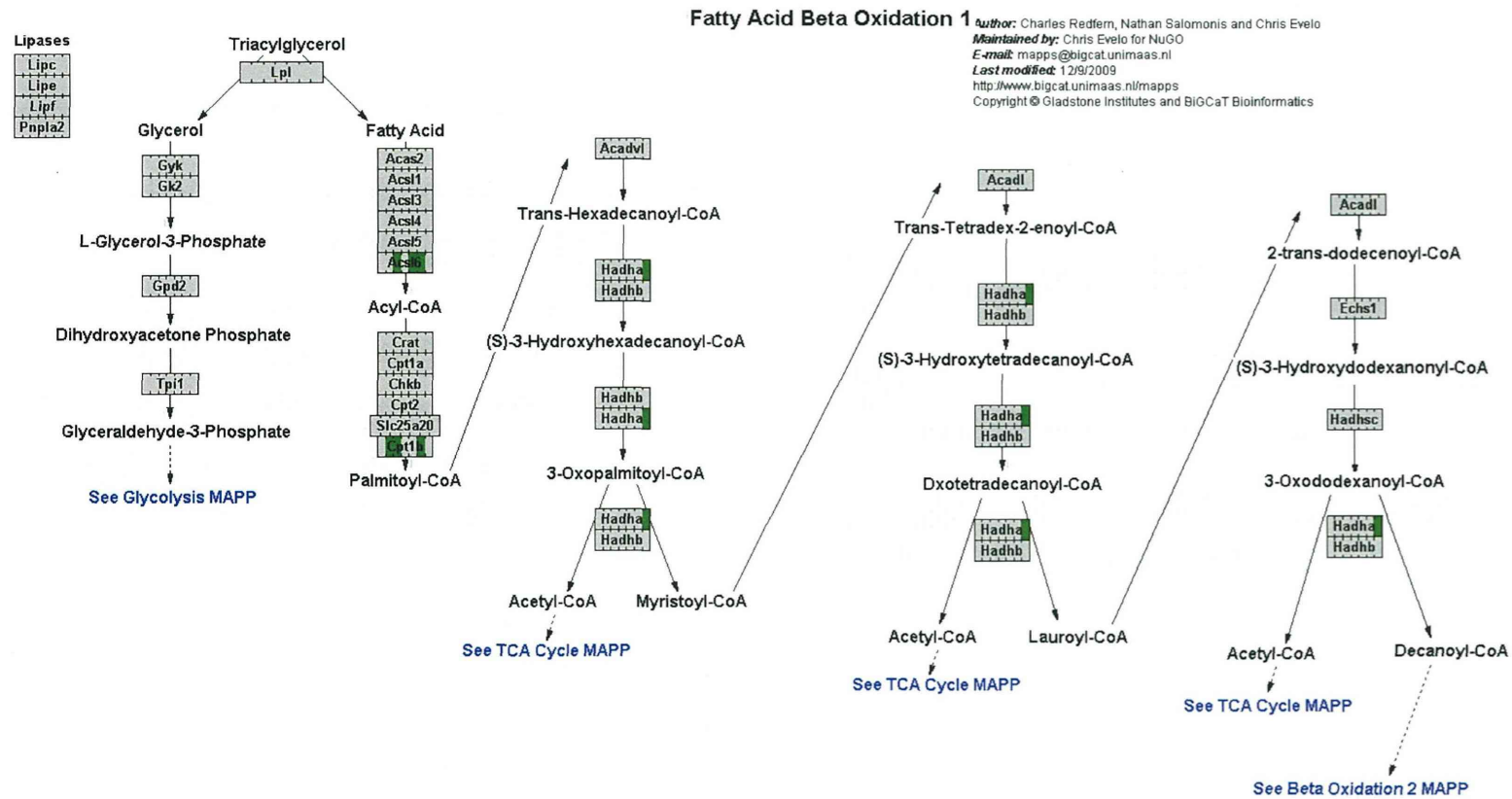
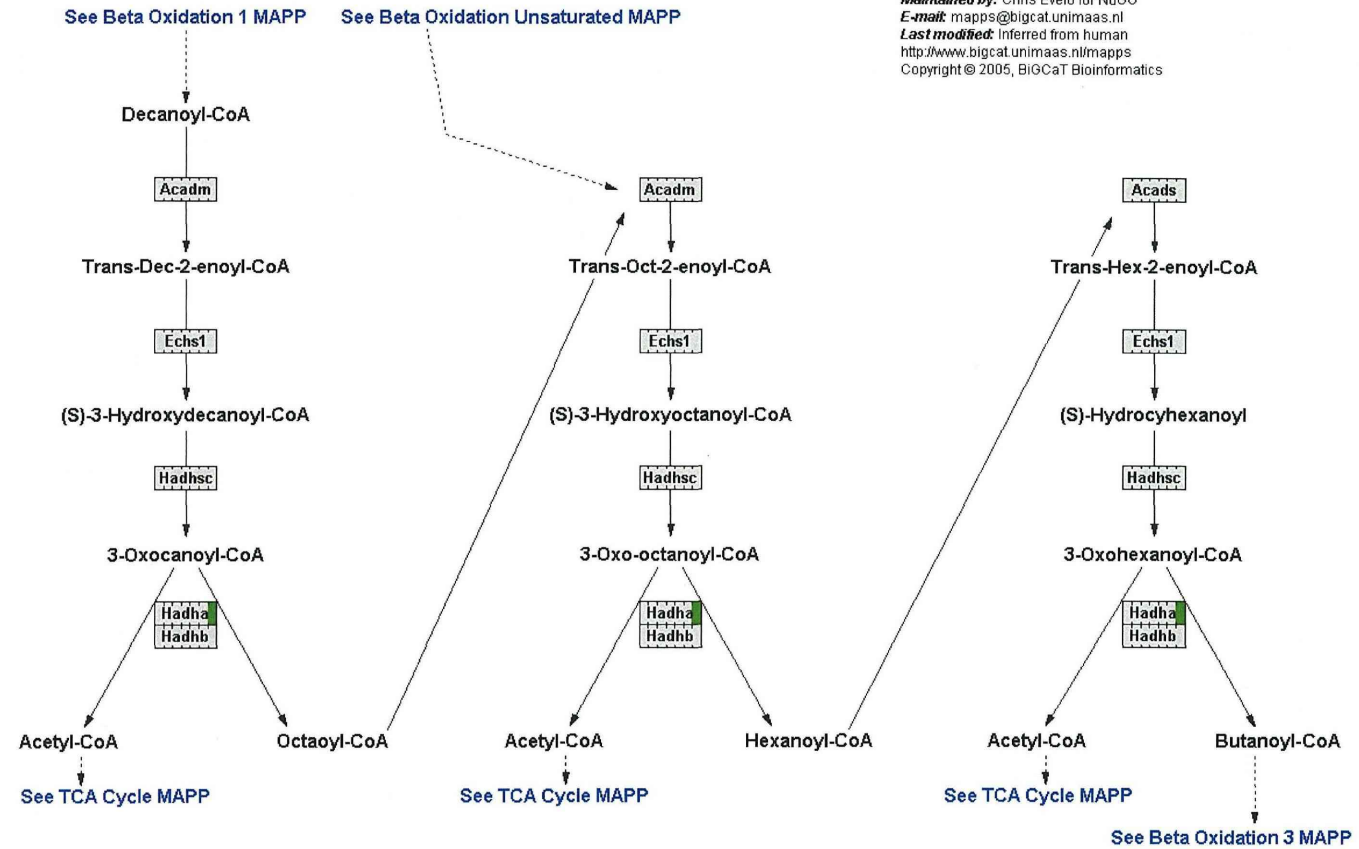


Figure 27-1 Fatty acid beta oxidation in SHRSP and WKY rats fed diets containing 7 w/w% Tokuho oils for 4 weeks (Part 1)

Fatty Acid Beta Oxidation 2

Author: Charles Redfern, Nathan Salomonis and Chris Evelo
Maintained by: Chris Evelo for NuGO
E-mail: mapps@bigcat.unimaas.nl
Last modified: Inferred from human
<http://www.bigcat.unimaas.nl/mapps>
 Copyright © 2005, BiGCaT Bioinformatics



- 71 -

Figure 27-2 Fatty acid beta oxidation in SHRSP and WKY rats fed diets containing 7 w/w% Tokuho oils for 4 weeks (Part 2)

Fatty Acid Beta Oxidation 3

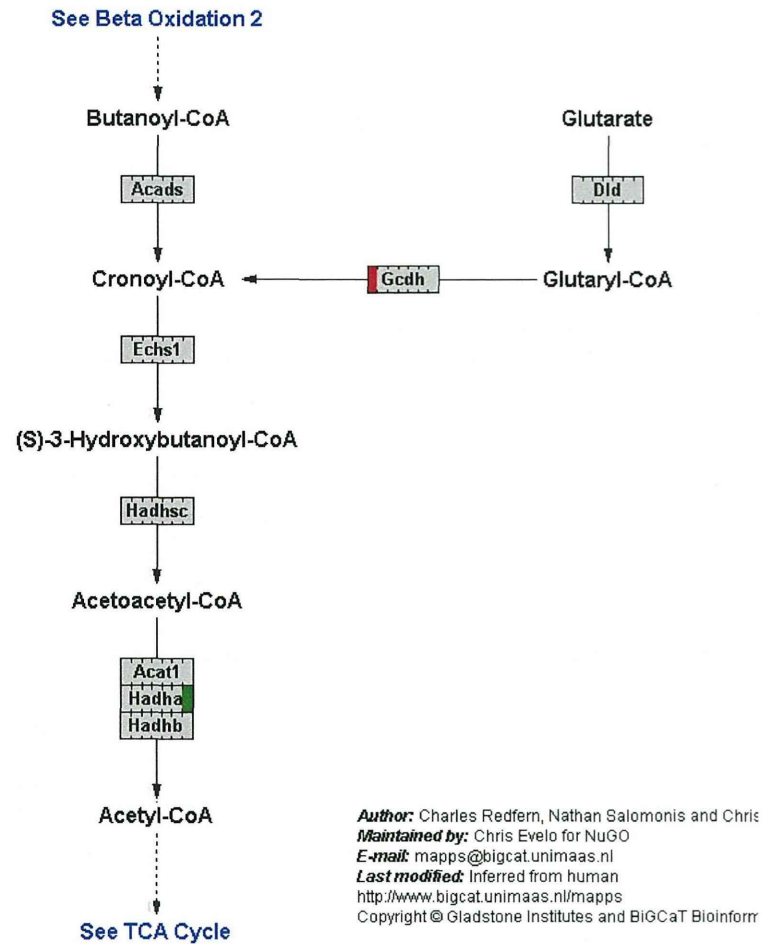


Figure 27-3 Fatty acid beta oxidation in SHRSP and WKY rats fed diets containing 7 w/w% Tokuh oils for 4 weeks (Part 3)

Author: Kam Dahlquist and Chris Evelo et al.
Maintained by: Chris Evelo for NuGO
E-mail: mapps@bigcat.unimaas.nl
Last modified: 12/9/2009
 http://www.bigcat.unimaas.nl/mapps/
 Copyright © Gladstone Institutes and BIOcAT Bioinformatics

Fatty Acid Biosynthesis

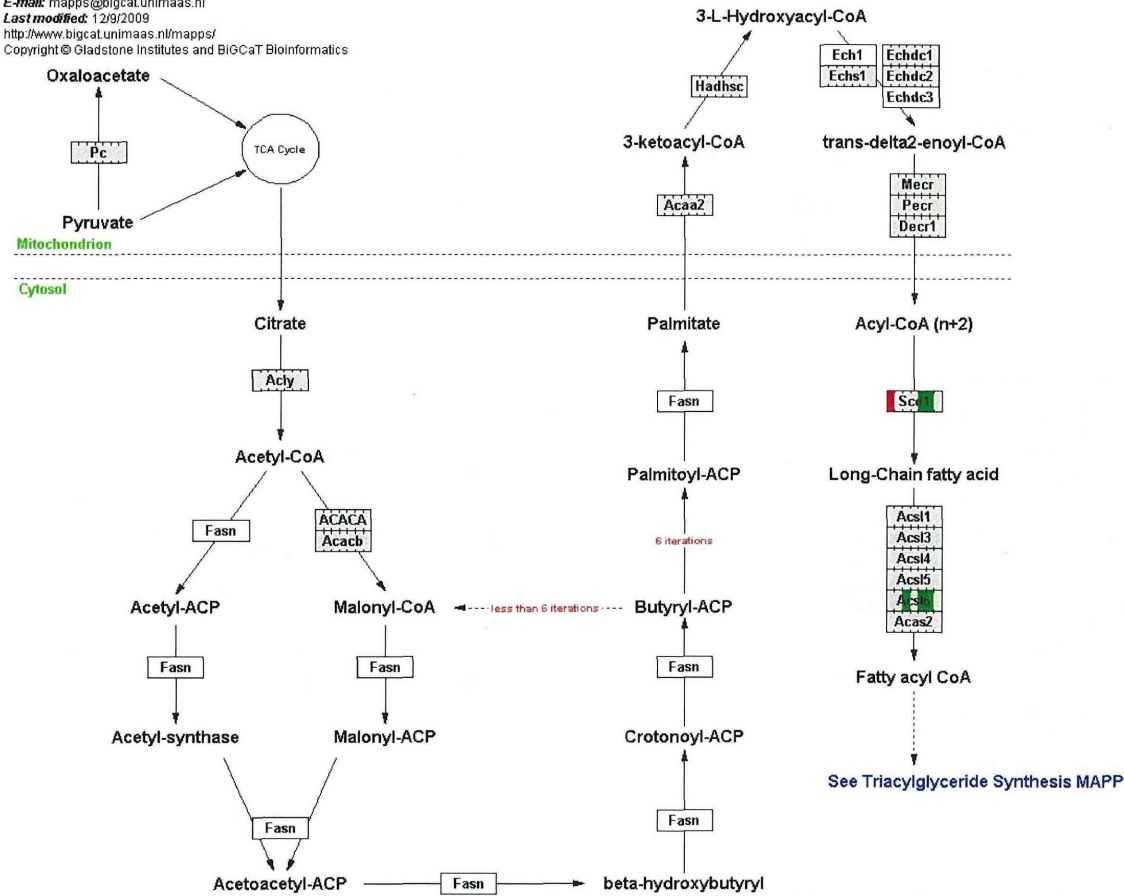
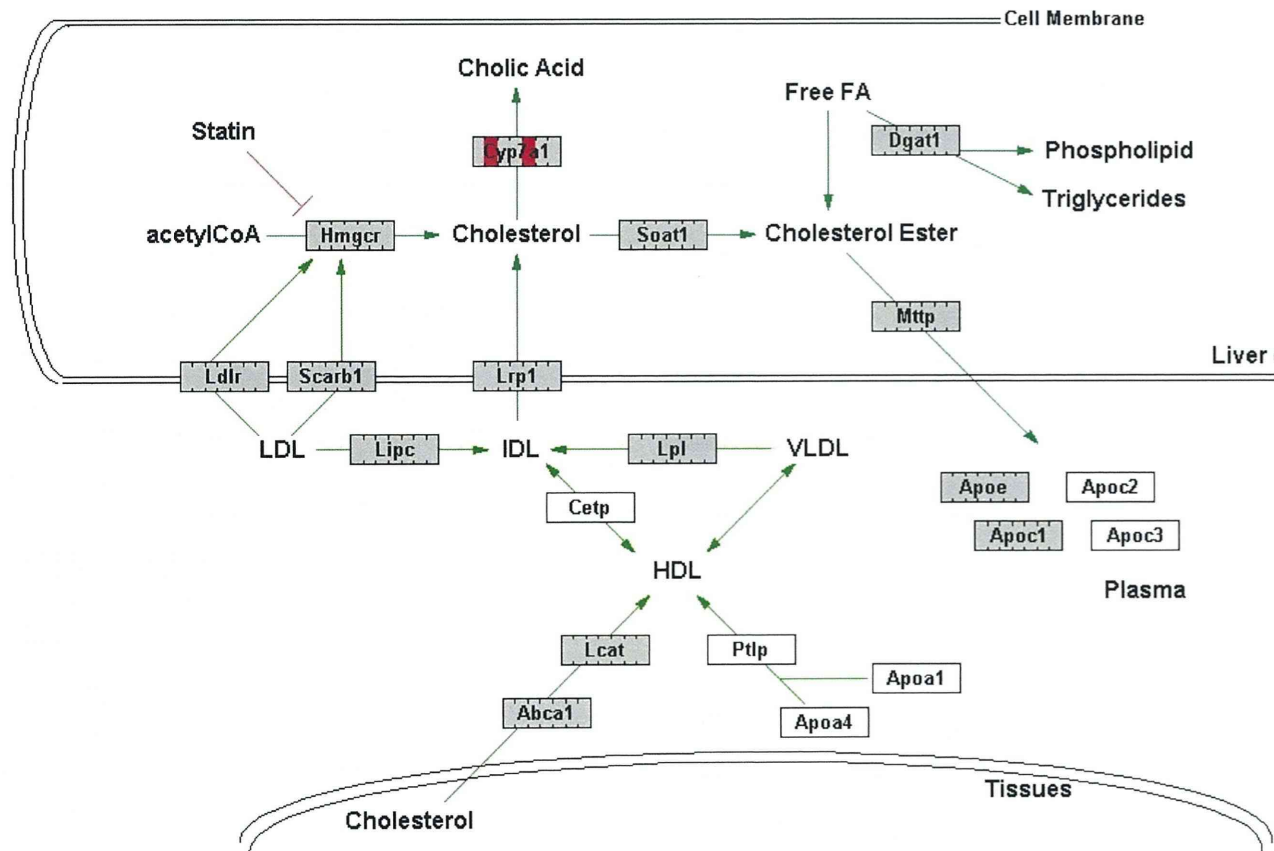


Figure 28 Fatty acid biosynthesis in SHRSP and WKY rats fed diets containing 7 w/w% Tokuho oils for 4 weeks

Author: PharmGKB
 E-mail: genmapp@gladstone.ucsf.edu
 Last modified: 10/17/2004

Statin Pathway PharmGKB



- 74 -

Figure 29 Statin pathway in SHRSP and WKY rats fed diets containing 7 w/w% Tokuho oils for 4 weeks

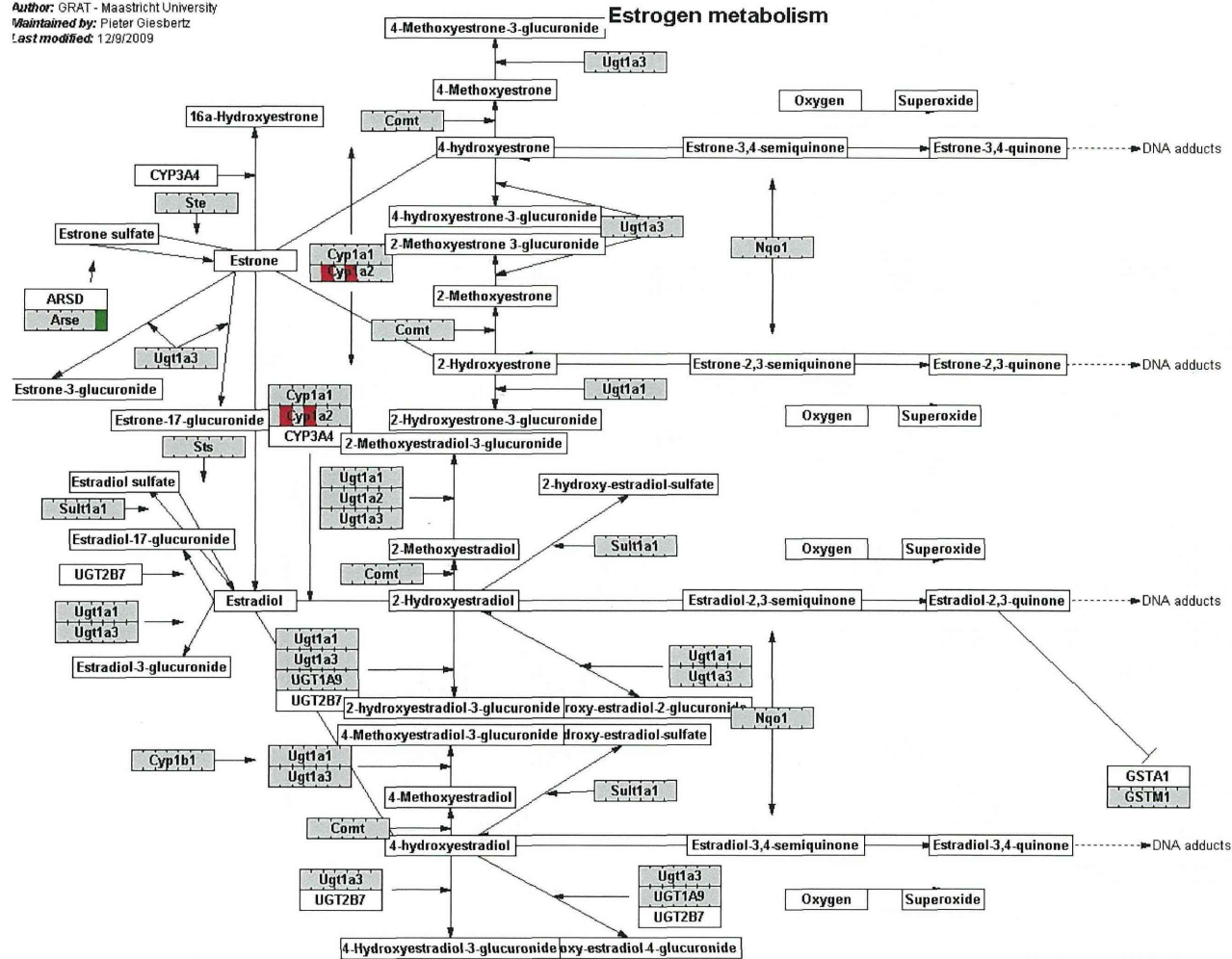


Figure 30 Estrogen pathway in SHRSP and WKY rats fed diets containing 7 w/w% Tokuho oils for 4 weeks

Author: Adapted by Nathan Salomonis
E-mail: nsalomonis@gladstone.ucsf.edu
Last modified: 12/9/2009
 See note for more details

Prostaglandin Synthesis and Regulation

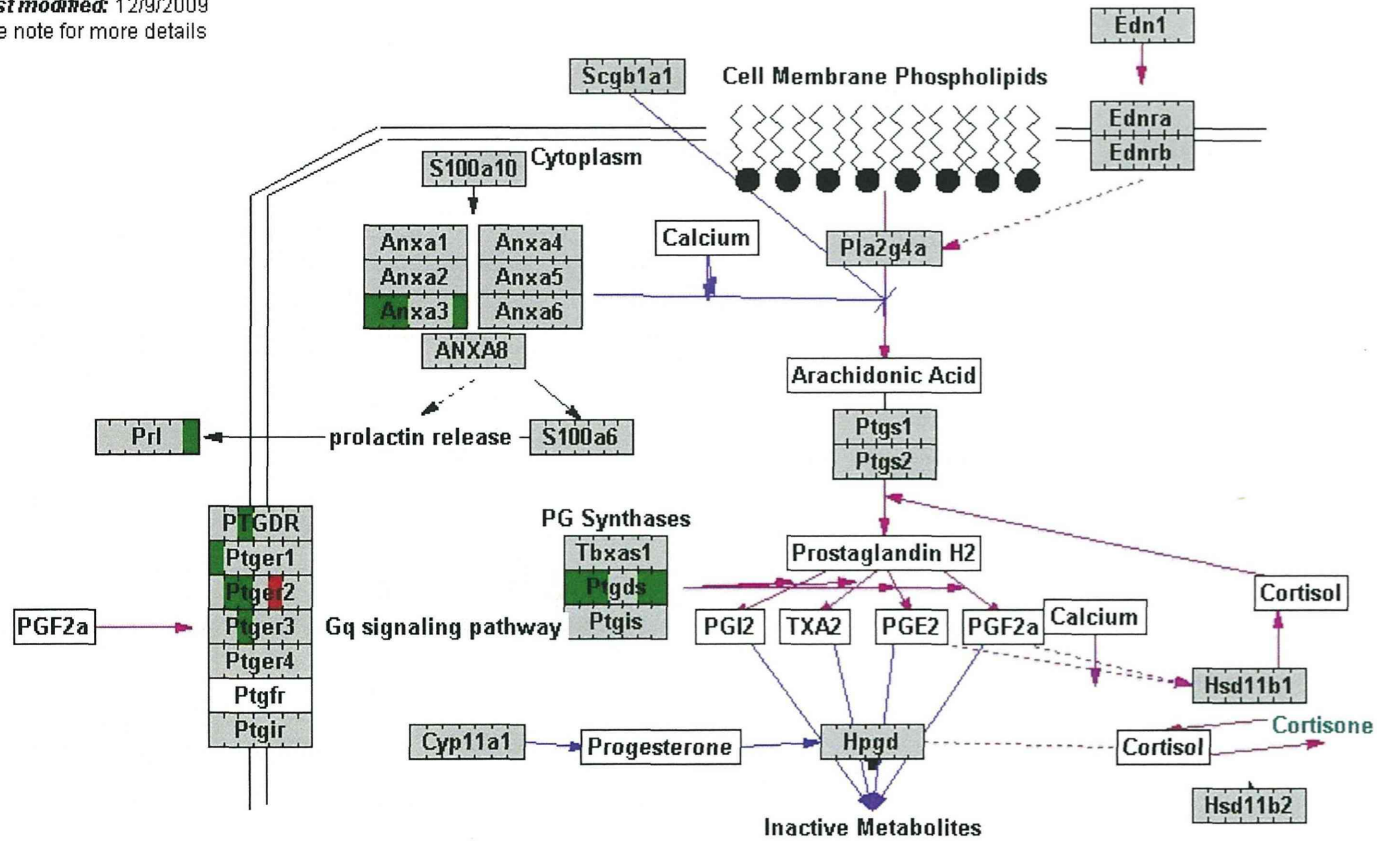


Figure 31 Prostaglandin synthesis and regulation in SHRSP and WKY rats fed diets containing 7 w/w% Tokuho oils for 4 weeks