

表 12. クラミア 年齢グループ別 報告数 年次推移 (2)

	1997				1998				1999				2000				2001				2002					
	男性		女性		男性		女性		男性		女性		男性		女性		男性		女性		男性		女性			
	不明	合計	不明	合計	不明	合計	不明	合計	不明	合計	不明	合計	不明	合計	不明	合計	不明	合計	不明	合計	不明	合計	不明	合計		
報告数	0-4	5 9	585	15,009	16,026	713	13,296	14,011	824	13,646	13,870	591	13,537	14,488	1,045	13,989	15,031	1,076	14,218	15,294	1,076	14,218	15,294	1,076	14,218	
人口10万人あたり	5-9	24,032	184,256	218,272	26,345	218,294	247,338	32,326	227,371	259,742	35,415	231,167	265,581	39,054	249,289	288,333	42,423	257,429	299,883	42,423	257,429	299,883	42,423	257,429		
	10-14	37,043	145,449	177,542	37,123	167,444	204,567	43,011	185,058	228,069	50,103	199,257	249,360	58,997	226,992	285,589	68,991	238,408	305,400	68,991	238,408	305,400	68,991	238,408		
	15-19	15,651	53,848	69,599	16,831	61,041	79,872	21,548	66,566	88,114	24,507	69,756	94,263	27,899	70,018	109,914	32,487	63,925	116,422	32,487	63,925	116,422	32,487	63,925		
	20-24	7,839	29,925	38,116	8,131	32,300	41,830	10,209	24,959	35,246	12,216	27,292	35,559	14,493	30,763	45,255	18,847	33,992	50,339	18,847	33,992	50,339	18,847	33,992		
	25-29	4,165	13,345	15,503	5,132	10,490	15,622	5,557	11,312	17,259	6,791	12,144	18,535	7,353	13,563	21,516	8,238	14,113	23,411	8,238	14,113	23,411	8,238	14,113		
	30-34	1,959	3,889	5,855	2,408	4,221	7,603	2,987	4,619	7,603	3,318	5,123	8,442	4,124	5,816	9,840	5,122	6,283	11,405	5,122	6,283	11,405	5,122	6,283		
	35-39	1,445	2,395	3,810	1,654	2,459	4,114	2,036	2,925	4,661	2,499	3,102	5,601	2,943	3,472	6,415	3,652	3,992	7,844	3,652	3,992	7,844	3,652	3,992		
	40-44	360	500	860	395	512	907	480	526	1,009	494	517	1,110	638	644	1,292	746	705	1,451	746	705	1,451	746	705		
	45-49	304	1,118	1,422	294	935	1,228	302	613	915	339	658	997	313	602	919	296	516	812	296	516	812	296	516		
	不明	88,187	448,607	534,774	104,912	503,578	608,490	120,468	538,243	658,711	137,233	594,109	701,329	157,623	625,504	783,127	180,039	654,484	834,503	180,039	654,484	834,503	180,039	654,484		
	合計	875	32,728	35,004	795	38,424	42,211	881	37,824	42,211	991	39,924	44,815	1,125	43,977	49,745	1,271	46,611	53,294	1,271	46,611	53,294	1,271	46,611		
	報告数	15-19	24,032	184,256	218,272	26,345	218,294	247,338	32,326	227,371	259,742	35,415	231,167	265,581	39,054	249,289	288,333	42,423	257,429	299,883	42,423	257,429	299,883	42,423	257,429	
	人口10万人あたり	20-24	39,994	142,955	177,412	36,480	164,583	250	201,313	426,610	184,094	201	228,955	49,575	199,379	488	244,442	57,938	224,814	497	283,249	68,241	236,083	537	302,841	
		25-29	15,109	52,440	67,549	17,516	60,025	82	78,200	21,382	66,275	73	87,730	24,235	70,308	186	94,729	27,580	78,555	193	106,299	32,133	83,099	205	115,437	
		30-34	7,815	20,349	27,978	8,974	23,318	32	31,323	10,200	24,891	27	30,088	12,129	27,511	93	39,723	14,300	31,447	109	44,878	18,651	33,148	111	49,910	
35-39		4,000	9,923	12,923	4,102	9,943	10	15,371	5,919	11,296	17	12,911	6,792	12,929	48	15,026	21,722	14,025	50	21,344	9,185	13,981	63	23,209		
40+		3,933	7,832	25	11,590	4,669	7,885	20	12,674	5,763	8,334	22	14,118	6,814	8,542	65	16,221	7,921	10,424	52	18,397	8,701	11,376	49	21,126	
不明		3,574	14,431	8	18,013	1,684	7,877	148	9,679	1,253	5,592	327	7,272	2,057	6,723	380	9,170	1,407	4,546	457	6,410	1,593	4,897	486	6,889	
合計		67,463	435,115	181	527,728	103,295	488,137	838	592,730	119,228	526,169	946	546,335	135,252	554,254	1,781	623,387	155,539	608,719	1,841	706,299	177,450	637,267	2,075	816,922	
報告数		20-24	338,3	1,654,2	983,8	402,8	1,854,4	1,131,8	459,1	2,052,4	1,246,6	508,8	2,104,4	1,303,2	574,7	2,344,4	1,437,0	640,0	2,393,3	1,492,8	640,0	2,393,3	1,492,8	640,0	2,393,3	
人口10万人あたり		25-29	154,3	539,9	345,4	189,5	617,4	400,3	220,6	899,2	454,3	246,6	738,6	491,7	289,9	834,5	557,4	333,3	890,5	606,5	333,3	890,5	606,5	333,3	890,5	
		30-34	79,5	197,3	1	124,2	239,8	153,7	154,9	102,0	176,3	151,1	102,0	136,8	294,9	18,0	213,4	10,0	213,4	18,0	213,4	10,0	213,4	18,0	213,4	
		35-39	36,6	81,9	59,4	45,8	93,0	69,5	53,8	101,7	77,9	59,9	107,9	84,1	70,5	120,2	95,8	83,9	127,4	105,9	83,9	127,4	105,9	83,9	127,4	
		40+	7,9	13,3	10,8	8,1	13,6	11,5	10,9	13,9	12,5	11,8	14,9	13,5	13,8	16,0	15,0	16,5	17,1	16,9	15,0	16,5	17,1	16,9	15,0	
		不明	875	407,9	253,0	102,0	451,9	282,9	116,0	481,4	304,8	126,6	484,6	312,0	142,6	526,0	340,8	180,4	544,3	358,7	180,4	544,3	358,7	180,4	544,3	
		合計	7	15	1	23	8	12	1	21	15	11	0	20	11	9	0	20	14	26	0	4	8	0	12	
		報告数	1-4	0	0	0	0	0	0	0	0	0	0	0	0	0	0	0	0	0	0	0	0	0	0	
	人口10万人あたり	5-9	0	10	3	3	12	15	3	9	0	12	1	6	0	8	0	5	0	5	0	1	1	0	2	
		10-14	16	378	0	396	36	413	0	449	31	429	0	460	30	474	0	504	38	503	1	542	26	537	1	584
		15-19	15,510	5,988	4	11,102	1,934	10,599	4	12,517	1,976	11,428	12	13,418	2,335	12,454	4	14,793	2,545	12,905	28	15,478	2,768	14,109	2	16,879
		20-24	3,660	9,170	4	12,434	4,094	10,687	4	14,185	4,702	10,740	7	15,449	5,013	11,993	9	17,015	5,769	12,716	42	18,527	6,825	14,461	7	21,093
		25-29	59,8	31,9	0	70,8	239	381,7	0	154,9	364	430,6	3	6,261	2,792	4,295	48	6,026	16	7,948	18	7,948	18	7,948	18	7,948
		30-34	1,559	2,103	0	3,662	1,934	2,299	2	4,235	2,198	2,371	1	4,570	2,366	2,692	1	5,059	2,938	2,872	7	5,519	2,998	3,297	1	6,296
		35-39	484	512	1	997	699	509	0	1,118	722	618	1	1,339	875	708	1	1,584	951	754	1	1,709	1,178	839	0	2,011
		40+	21	33	0	54	32	51	0	49	20	69	0	49	20	69	0	51	20	69	0	51	20	69	0	51
不明		72	136	13	221	53	132	22	207	50	142	17	209	75	132	12	218	88	159	12	237	60	132	24	218	
合計		8,714	25,406	24	34,144	11,041	27,956	37	36,034	12,287	29,813	41	42,141	15,539	32,868	32	48,439	15,242	34,728	107	50,077	17,451	38,176	39	55,266	
報告数		<1	3,8	8,7	6,5	4,5	7,1	6,1	8,7	6,7	7,7	8,4	5,5	6,0	8,2	16,0	12,0	24	5,0	3,7	10,0	12,0	24	5,0	3,7	
人口10万人あたり		1-4	0,0	0,4	0,2	0,2	0,9	0,7	0,4	1,0	0,7	0,7	0,3	0,8	0,6	0,6	0,0	0,7	0,1	0,1	0,1	0,1	0,1	0,1	0,1	
		5-9	0,0	1,0	0,5	0,3	1,2	0,7	0,3	0,8	0,8	0,1	0,8	0,3	0,3	0,3	0,0	0,3	0,1	0,1	0,1	0,1	0,1	0,1	0,1	
		10-14	1,7	38,5	19,6	3,5	42,0	2,2	3,0	43,5	2,2	2,9	47,5	2,4	3,8	49,8	2,6	2,1	2,4	5,3	2,6	2,1	2,4	5,3	2,6	
		15-19	144,7	971,3	546,7	183,8	1,053,7	612,0	188,7	1,138,3	650,6	218,4	1,234,3	713,5	233,8	1,255,1	731,3	253,2	1,364,5	793,5	253,2	1,364,5	793,5	253,2	1,364,5	
	20-24	316,1	924,1	644,5	394,1	1,011,8	696,8	448,3	1,054,6	749,1	470,4	1,175,7	815,7	534,5	1,233,4	877,9	602,6	1,374,9	960,9	602,6	1,374,9	960,9	602,6	1,374,9		
	25-29	184,3	325,8	214,2	217,0	365,4	219,0	237,0	386,1	310,8	260,6	417,9	338,5	301,3	457,7	383,1	249,6	519,4	433,4	249,6	519,4	433,4	249,6	519,4		
	30-34	126,3	1,458	1	1,242	239,8																				

表 12. クラミジア 年齢グループ別 報告数 年次推移(3)

	2003				2004				2005				2006				2007				2008				
	男性	女性	不明	合計	男性	女性	不明	合計	男性	女性	不明	合計	男性	女性	不明	合計	男性	女性	不明	合計	男性	女性	不明	合計	
0-4																									
5-9																									
10-14	1,001	13,849		14,850	1,172	13,656		14,828	1,200	12,224		13,424	1,238	12,384		13,622	1,242	12,303		13,545	1,441	12,816		14,257	
15-19	44,331	268,175		312,506	48,209	275,038		323,247	53,734	282,320		336,054	58,820	293,392		352,212	68,808	310,474		379,282	78,741	340,975		419,926	
20-24	71,476	252,338		323,814	78,410	264,749		343,159	85,331	272,843		358,174	93,025	282,163		375,188	101,160	293,155		394,315	109,408	322,654		432,062	
25-29	34,916	89,974		124,890	39,374	97,687		137,061	44,712	103,347		148,059	49,309	111,809		161,117	54,590	119,354		173,944	60,629	126,901		187,530	
30-34	17,810	35,782		53,592	18,533	37,405		55,938	21,102	38,944		60,046	22,558	41,252		63,810	24,477	44,552		69,029	25,148	47,757		72,903	
35-39	9,712	14,889		24,601	10,647	15,839		26,486	11,700	16,809		28,509	12,763	18,184		30,947	13,747	19,707		33,454	14,908	21,510		36,417	
40-44	5,975	8,812		14,787	6,387	9,229		15,616	6,942	9,749		16,691	7,410	10,219		17,629	7,944	10,850		18,794	8,525	11,308		19,833	
45-49	4,102	4,202		8,304	4,602	4,640		9,242	5,203	4,802		10,005	5,816	5,533		11,351	6,335	6,226		12,561	7,388	6,329		13,717	
50-54	3,712	3,723		7,435	4,067	4,067		8,134	4,602	4,640		9,242	5,203	4,802		10,005	5,816	5,533		11,351	6,335	6,226		12,561	
55-64	883	770		1,653	993	892		1,885	1,169	1,021		2,191	1,334	1,077		2,411	1,521	1,304		2,825	1,834	1,424		3,258	
65+	323	453		776	335	420		755	402	483		885	424	469		894	413	392		805	427	453		880	
不明																									
合計	180,123	688,755		868,878	210,935	718,527		929,482	233,552	742,892		978,445	252,228	777,675		1,030,911	280,337	852,660		1,133,277	311,779	893,004		1,244,922	
0-4																									
5-9																									
10-14	9.8	134.0		143.8	10.8	132.3		143.1	11.2	127.0		138.2	11.7	122.8		134.5	11.3	124.1		135.4	16.9	140.3		157.2	
15-19	421.4	2,672.5		3,093.9	453.3	2,724.6		3,177.9	498.0	2,754.5		3,242.5	537.9	2,824.0		3,362.4	608.9	2,988.3		3,577.2	695.9	3,251.4		3,947.3	
20-24	870.3	2,513.3		3,383.6	935.1	2,633.7		3,568.8	1,007.7	2,637.8		3,645.5	1,173.9	2,791.5		3,965.4	1,292.1	2,940.4		4,232.5	1,650.7	3,153.2		4,383.9	
25-29	352.3	921.7		1,274.0	393.9	1,019.0		1,412.9	425.4	1,054.6		1,580.0	464.4	1,104.3		1,768.7	509.3	1,160.9		2,070.2	554.1	1,219.0		2,289.1	
30-34	170.4	348.7		519.1	207.8	392.5		599.3	279.2	392.5		671.7	288.0	424.1		712.1	323.8	471.6		825.4	381.4	495.5		876.9	
35-39	91.1	139.4		230.5	100.7	151.1		251.8	110.8	160.0		270.8	119.8	172.6		292.4	129.0	187.3		316.3	141.1	205.3		346.4	
40-44	54.5	81.2		135.7	59.1	82.4		141.5	64.2	85.9		150.1	70.2	91.2		160.4	72.4	91.9		174.3	75.3	99.3		204.6	
45-49	20.0	20.2		40.2	22.2	20.2		42.4	23.8	23.2		47.0	27.3	25.2		52.5	26.2	24.7		50.9	28.8	26.3		55.1	
50-54	6.6	5.3		11.9	7.1	5.9		13.0	8.5	6.5		15.0	8.8	6.6		17.4	9.6	7.7		19.3	10.1	8.2		21.3	
65+	2.2	2.2		4.4	2.2	2.2		4.4	2.1	2.8		4.9	2.4	2.7		5.1	2.6	1.8		4.4	2.1	2.6		5.7	
不明																									
合計	133.3	464.7		598.0	145.9	481.9		627.8	160.0	493.9		654.9	171.7	512.0		726.7	188.6	539.8		728.2	202.3	579.4		781.7	
15-19	43,883	263,772	650	308,305	47,787	272,844	743	321,374	53,740	280,101	1,089	334,430	58,332	291,493	802	350,627	68,808	310,474	827	379,282	78,741	340,975	1,310	419,926	
20-24	70,727	250,708	920	322,355	76,702	262,707	1,022	340,431	85,184	271,012	1,633	358,829	96,592	283,019	729	316,022	101,160	293,155	698	401,170	119,948	322,654	1,181	432,062	
25-29	34,956	89,182	217	124,355	39,374	97,687	213	137,274	44,712	103,347	300	147,352	49,309	111,809	309	160,411	54,590	119,354	282	173,944	60,629	126,901	503	187,530	
30-34	17,828	35,490	97	53,415	19,180	37,110	118	56,414	20,925	38,692	145	59,762	22,558	41,252	128	63,501	24,477	44,552	135	69,029	25,148	47,757	240	74,737	
35-39	9,688	14,750	55	24,493	10,551	15,715	57	26,323	11,595	16,882	68	28,509	12,556	18,064	74	30,794	13,747	19,707	75	33,454	14,908	21,510	119	36,417	
40-44	5,975	8,812	32	14,819	6,387	9,229	33	15,653	6,942	9,749	35	16,726	7,410	10,219	37	17,666	7,944	10,850	33	18,794	8,525	11,308	48	19,833	
45-49	4,102	4,202	45	8,349	4,602	4,640	38	9,280	5,203	4,802	41	10,044	5,816	5,533	38	11,382	6,335	6,226	30	12,561	7,388	6,329	53	13,717	
50-54	3,712	3,723	23	7,458	4,067	4,067	23	8,157	4,602	4,640	23	9,245	5,203	4,802	23	10,044	5,816	5,533	23	11,351	6,335	6,226	23	12,561	
55-64	883	770	13	1,666	993	892	13	1,908	1,169	1,021	13	2,191	1,334	1,077	13	2,411	1,521	1,304	13	2,825	1,834	1,424	13	3,258	
65+	323	453	7	783	335	420	7	762	402	483	7	892	424	469	7	901	413	392	7	805	427	453	7	880	
不明																									
合計	180,123	688,755	872,418	2,160,935	210,935	718,527	929,482	2,333,552	242,892	978,445	252,228	777,675	1,030,911	280,337	852,660	2,477	1,168,274	311,779	893,004	3,740	1,244,922				
0-4																									
5-9																									
10-14	9.8	134.0		143.8	10.8	132.3		143.1	11.2	127.0		138.2	11.7	122.8		134.5	11.3	124.1		135.4	16.9	140.3		157.2	
15-19	421.4	2,672.5		3,093.9	453.3	2,724.6		3,177.9	498.0	2,754.5		3,242.5	537.9	2,824.0		3,362.4	608.9	2,988.3		3,577.2	695.9	3,251.4		3,947.3	
20-24	870.3	2,513.3		3,383.6	935.1	2,633.7		3,568.8	1,007.7	2,637.8		3,645.5	1,173.9	2,791.5		3,965.4	1,292.1	2,940.4		4,232.5	1,650.7	3,153.2		4,383.9	
25-29	352.3	921.7		1,274.0	393.9	1,019.0		1,412.9	425.4	1,054.6		1,580.0	464.4	1,104.3		1,768.7	509.3	1,160.9		2,070.2	554.1	1,219.0		2,289.1	
30-34	170.4	348.7		519.1	207.8	392.5		599.3	279.2	392.5		671.7	288.0	424.1		712.1	323.8	471.6		825.4	381.4	495.5		876.9	
35-39	91.1	139.4		230.5	100.7	151.1		251.8	110.8	160.0		270.8	119.8	172.6		292.4	129.0	187.3		316.3	141.1	205.3		346.4	
40-44	54.5	81.2		135.7	59.1	82.4		141.5	64.2	85.9		150.1	70.2	91.2		160.4	72.4	91.9		174.3	75.3	99.3		204.6	
45-49	20.0	20.2		40.2	22.2	20.2		42.4	23.8	23.2		47.0	27.3	25.2		52.5	26.2	24.7		50.9	28.8	26.3		55.1	
50-54	6.6	5.3		11.9	7.1	5.9		13.0	8.5	6.5		15.0	8.8	6.6		17.4	9.6	7.7		19.3	10.1	8.2		21.3	
65+	2.2	2.2		4.4	2.2	2.2		4.4	2.1	2.8		4.9	2.4	2.7		5.1	2.6	1.8		4.4	2.1	2.6		5.7	
不明																									
合計	133.3	464.7		598.0	145.9	481.9		627.8	160.0	493.9		654.9	171.7	512.0		726.7	188.6	539.8		728.2	202.3	579.4		781.7	
15-19	43,883	263,772	650	308,305	47,787	272,844	743	321,374	53,740	280,101	1,089	334,430	58,332	291,493	802	350,627	68,808	310,474	827	379,282	78,741	340,975	1,310	419,926	
20-24	70,727	250,708	920	322,355	76,702	262,707	1,022	340,431																	

表 12. クラミジア 年齢グループ別 報告数 年次推移 (4)

	2009				2010				2011				2012				2013					
	男性	女性	不明	合計	男性	女性	不明	合計	男性	女性	不明	合計	男性	女性	不明	合計	男性	女性	不明	合計		
報告数	0-4	330	676	1022	327	619	18	954	284	458	5	747	272	495	7	774	266	402	13	681		
	5-9	33	154	187	26	158	4	188	17	118	1	143	17	134	0	151	20	123	2	145		
	10-14	1,405	12,447	13,859	1,590	12,900	81	14,571	1,743	13,988	74	15,805	1,655	12,673	27	14,355	1,554	11,001	30	12,585		
	15-19	80,725	347,597	428,322	85,570	354,552	1,500	441,622	80,764	368,818	14,477	430,059	81,950	344,440	829	433,229	78,044	316,438	770	395,612		
	20-24	120,975	332,246	453,221	121,668	335,994	1,316	458,978	147,848	393,534	14,055	545,447	152,772	400,529	772	554,173	153,102	399,455	1,011	553,568		
	25-29	82,437	127,708	210,145	86,470	130,561	494	197,525	73,557	140,928	549	214,934	77,886	146,007	311	224,014	82,190	150,733	506	233,429		
	30-34	24,244	49,103	73,347	21,220	51,925	253	83,408	24,971	55,592	254	81,277	26,111	59,594	131	97,738	41,017	82,414	244	103,775		
	35-39	14,859	21,354	36,213	15,883	22,421	102	38,384	16,911	23,711	112	40,734	18,274	25,133	73	43,680	20,157	26,720	114	46,991		
	40-44	8,750	9,487	18,237	8,934	9,931	89	19,954	10,490	11,220	74	21,854	11,598	12,445	41	23,882	12,200	12,501	73	24,774		
	45-49	7,818	7,183	15,003	8,635	7,420	48	16,106	9,910	8,162	44	18,136	11,332	8,961	28	20,321	12,180	9,299	32	21,511		
	50-54	1,787	1,978	3,765	1,834	1,874	15	3,723	2,300	1,903	7	4,210	2,763	2,161	6	4,950	3,154	2,259	11	5,424		
	55-59	472	471	943	464	481	9	954	569	486	9	1,054	602	525	7	1,134	750	616	11	1,377		
	不明	839	1,039	1,878	3,159	3,336	1,503	2,199	2,358	729	1,444	228	2,401	1,427	305	85	4,287	858	1,297	89	2,044	
合計	321,763	512,718	834,481	329,923	545,022	4,188	100,929	389,970	101,552	4,189	141,479	402,552	101,822	2,147	142,376	402,552	933,348	2,065	140,926			
人口10万人あたり	0-4	3.1	6.5	4.8	3.2	6.3	0.4	2.8	2.8	4.6	0.3	2.7	2.7	5.1	4.9	2.6	4.1	2.6	4.1	3.4		
	5-9	0.3	1.5	0.9	0.3	1.5	0.9	0.2	1.2	0.7	0.2	1.3	0.7	0.2	1.3	0.7	0.2	1.2	0.7	0.7		
	10-14	13.7	127.6	59.8	15.0	127.4	70.2	16.5	134.6	74.5	15.7	125.5	69.5	14.7	105.9	69.5	14.7	105.9	69.5	60.9		
	15-19	782.6	331.6	199.6	757.9	329.6	202.4	800.0	341.6	202.7	785.8	333.7	202.8	715.2	302.2	715.2	715.2	302.2	715.2	182.1		
	20-24	10,950	31,873	21,113	11,958	33,674	2,253	13,433	37,225	2,513	13,228	36,309	2,453.9	13,256	35,211	2,453.9	13,256	35,211	2,453.9	10,909		
	25-29	5,617	10,231	87.7	6,250	12,474	93.1	8,997	13,435	101.6	17,162	1,383.8	10,459	17,579	1,428.3	10,459	17,579	1,428.3	10,459	10,909		
	30-34	2,004	5,020	299.2	2,124	5,210	41.78	2,408	5,575	36.22	5,721	457.4	2,309	5,932	457.4	2,309	5,932	457.4	2,309	457.4		
	35-39	1,435	2,037	17.7	1,579	2,212	19.2	1,684	2,339	20.19	1,681	2,590	22.40	2,075	2,734	22.40	2,075	2,734	22.40	2,411		
	40-44	833	903	87.0	872	923	94.8	939	1,006	1,059	103.7	1,109	1,159	1,136	1,166	1,183	1,136	1,166	1,183	1,178		
	45-49	558	518	33.7	597	558	35.8	646	558	35.8	600	520	39.9	45.9	55.8	41.4	46.8	55.8	41.4	46.8		
	50-54	108	87	9.7	104	89	9.7	131	101	11.5	150	108	12.8	17.0	11.3	14.1	12.8	17.0	11.3	14.1		
	55-59	2.8	2.1	2.4	2.7	2.1	2.4	3.3	2.1	2.6	3.2	2.2	2.6	4.0	2.5	3.2	2.6	4.0	2.5	3.2		
	不明	839	1,039	1,878	3,159	3,336	1,503	2,199	2,358	729	1,444	228	2,401	1,427	305	85	4,287	858	1,297	89	2,044	
合計	217.1	586.7	405.3	232.2	605.1	421.6	257.6	648.9	457.6	280.6	638.7	453.3	282.6	621.1	445.6							
報告数	0-4	3	4	0	13	9	6	0	15	12	11	0	23	0	0	0	0	0	0	0		
	5-9	3	8	0	11	0	2	0	2	0	0	0	0	0	0	0	0	0	0	0		
	10-14	1	14	0	15	3	8	0	11	1	5	0	6	0	0	0	0	0	0	0		
	15-19	4,541	18,907	9	23,450	4,717	19,475	0	24,221	5,005	20,154	13	25,162	0	0	0	0	0	0	0		
	20-24	10,742	21,125	26	31,893	11,546	22,791	31	34,388	12,708	24,649	29	37,386	0	0	0	0	0	0	0		
	25-29	6,600	9,164	24	15,788	7,128	9,903	13	17,044	7,897	10,454	20	18,141	0	0	0	0	0	0	0		
	30-34	4,806	5,958	11	10,775	5,256	6,492	8	11,846	5,719	7,200	7	12,959	0	0	0	0	0	0	0		
	35-39	2,376	2,914	8	4,298	2,520	2,247	1	4,878	2,808	2,531	15	5,354	0	0	0	0	0	0	0		
	40-44	148	78	0	226	156	83	0	239	195	114	0	309	0	0	0	0	0	0	0		
	45-49	21	29	8	56	40	33	12	85	19	31	33	83	0	0	0	0	0	0	0		
	不明	292	574	88	873	3,518	61,857	74	92,229	34,182	69,748	117	108,044	0	0	0	0	0	0	0		
	合計	4.7	2.2	3.4	4.8	3.2	3.9	5.1	5.9	6.0	6.0	6.0	6.0	6.0	6.0	6.0	6.0	6.0	6.0	6.0		
	報告数	0-4	0.4	1.1	0.8	0.0	0.3	0.1	0.0	0.0	0.0	0.0	0.0	0.0	0.0	0.0	0.0	0.0	0.0	0.0	0.0	
5-9		0.1	1.6	0.8	0.3	0.9	0.8	0.1	0.6	0.3	0.2	0.3	0.2	0.3	0.2	0.3	0.2	0.3	0.2	0.3		
10-14		3.5	23.9	28.1	5.3	39.7	30.0	6.0	46.3	44.0	31.3	32.4	44.0	31.3	32.4	44.0	31.3	32.4	44.0	31.3		
15-19		394.4	1,703.3	1,041.7	415.9	1,784.1	108.8	446.0	1,881.2	1,142.7	446.0	1,881.2	1,142.7	446.0	1,881.2	1,142.7	446.0	1,881.2	1,142.7	446.0		
20-24		900.7	1,871.4	1,373.8	951.5	1,963.3	1,454.8	1,031.0	2,113.0	1,558.3	1,031.0	2,113.0	1,558.3	1,031.0	2,113.0	1,558.3	1,031.0	2,113.0	1,558.3	1,031.0		
25-29		556.7	788.4	672.4	588.7	838.8	712.7	625.3	878.3	750.7	625.3	878.3	750.7	625.3	878.3	750.7	625.3	878.3	750.7	625.3		
30-34		209.7	262.1	236.0	232.7	283.0	258.0	245.5	312.5	279.6	245.5	312.5	279.6	245.5	312.5	279.6	245.5	312.5	279.6	245.5		
35-39		47.2	40.0	43.7	50.0	45.4	48.2	55.3	49.6	52.7	49.6	52.7	49.6	52.7	49.6	52.7	49.6	52.7	49.6	52.7		
40-44		4.9	2.2	3.4	6.3	2.3	4.1	6.1	3.0	4.4	6.1	3.0	4.4	6.1	3.0	4.4	6.1	3.0	4.4	6.1		
不明		175.2	339.9	258.5	1,868	358.8	2,737	2,001	376.7	2,804	2,001	376.7	2,804	2,001	376.7	2,804	2,001	376.7	2,804	2,001		
合計		7	13	0	20	11	17	2	30	18	20	0	38	19	19	0	38	8	16	0	24	
報告数		0-4	3	14	0	17	4	16	0	20	0	2	0	2	0	3	0	3	2	12	0	14
		5-9	68	475	1	542	85	584	1	670	83	612	2	707	89	644	0	733	74	602	1	677
	10-14	4,069	12,086	21	16,176	5,066	14,619	61	19,887	5,480	16,192	30	21,702	5,403	15,500	37	20,970	5,982	14,562	6	19,950	
	15-19	5,327	13,844	30	23,001	10,907	19,900	57	28,824	12,174	17,960	54	29,788	12,219	18,112	26	30,557	11,988	18,900	14	30,032	
	20-24	5,370	5,994	16	11,380	5,474	6,527	24	12,025	7,054	7,172	20	14,246	7,389	7,833	22	14,774	7,893	7,866	5	15,764	
	25-29	2,635	2,276	7	4,920	2,992	2,595	16	5,604	3,184	2,843	5	6,032	3,683	3,052	13	6,748	3,752	3,222	3	6,977	
	30-34	1,542	1,250	0	2,792	1,878	1,388	6	3,272	1,886	1,419	7	3,312	2,009	1,477	4	3,490	2,033	1,587	2		

表 13. 梅毒 報告数 年次推移

		1991	1992	1993	1994	1995	1996	1997	1998	1999	2000	2001	2002	2003	2004	2005	2006	2007	2008	2009	2010	2011	2012	2013
米国 第1期&第2期	男性	23,453	18,025	13,942	10,666	8,729	5,997	4,660	3,918	3,833	3,528	4,132	5,268	5,959	6,721	7,383	8,293	9,769	11,255	11,764	11,981	12,453	14,190	15,861
	女性	19,263	15,978	12,410	9,952	7,774	5,368	3,888	3,100	2,780	2,445	1,968	1,594	1,218	1,254	1,399	1,458	1,692	2,242	2,232	1,780	1,501	1,458	1,500
	不明	---	---	---	---	---	---	---	---	---	---	---	---	---	---	---	---	5	3	1	13	16	19	14
	合計	42,716	34,003	26,352	20,618	16,503	11,365	8,548	7,018	6,613	5,979	6,103	6,862	7,177	7,980	8,724	9,756	11,466	13,500	13,997	13,774	13,970	15,667	17,375
カナダ 第1&2期、前 期潜伏期	男性	---	---	97	112	95	74	65	110	113	114	184	386	758	969	900	1,131	1,047	1,200	1,501	1,544	1,643	---	---
	女性	---	---	76	71	52	45	50	67	78	60	103	95	148	133	163	180	158	190	181	152	114	---	---
	不明	---	---	4	5	0	0	0	0	0	0	0	0	0	2	1	0	1	4	1	2	0	---	---
	合計	---	---	177	188	147	119	115	177	191	174	287	482	908	1,104	1,064	1,311	1,206	1,394	1,683	1,698	1,757	---	---
オーストラリア すべての梅毒	男性	---	894	---	988	---	743	---	538	---	762	---	737	---	891	---	740	---	998	---	---	---	---	---
	女性	---	617	---	905	---	693	---	723	---	614	---	496	---	419	---	521	---	510	---	493	---	563	---
	不明	---	54	---	23	---	39	---	31	---	14	---	6	---	2	---	17	---	14	---	4	---	6	---
	合計	---	1,300	---	2,005	---	1,826	---	1,742	---	1,371	---	1,130	---	959	---	1,300	---	1,261	---	1,215	---	1,460	---
オーストラリア 2年未満	男性	---	---	---	---	---	---	---	---	---	---	---	---	---	---	---	502	---	525	---	703	---	1,263	---
	女性	---	---	---	---	---	---	---	---	---	---	---	---	---	---	---	123	---	131	---	185	---	153	---
	不明	---	---	---	---	---	---	---	---	---	---	---	---	---	---	---	3	---	0	---	1	---	2	---
	合計	---	---	---	---	---	---	---	---	---	---	---	---	---	---	---	628	---	656	---	889	---	1,418	---
英国 第1期&第2期 (2008より、第1 第2、前期潜伏)	男性のうちMSM	---	---	---	---	---	---	---	---	---	---	---	---	---	---	---	---	---	---	---	---	---	---	---
	男性	---	---	---	---	---	---	---	90	---	166	---	252	---	610	---	1,056	---	1,384	---	1,908	---	2,257	---
	女性	---	---	---	---	---	---	---	49	---	57	---	75	---	105	---	130	---	179	---	268	---	343	---
	合計	---	---	---	---	---	---	---	139	---	223	---	327	---	715	---	1,186	---	1,563	---	2,176	---	2,600	---

表 14. 梅毒 10万人あたり発生率 年次推移

		1991	1992	1993	1994	1995	1996	1997	1998	1999	2000	2001	2002	2003	2004	2005	2006	2007	2008	2009	2010	2011	2012	2013	
米国 第1期&第2期	男性	19.4	14.5	11.3	8.6	6.8	4.6	3.6	3.0	2.9	2.6	3.0	3.7	4.2	4.7	5.1	5.6	6.6	7.5	7.8	7.9	8.1	9.2	10.3	
	女性	15.2	12.3	9.6	7.6	5.8	4.0	2.8	2.2	2.0	1.7	1.4	1.1	0.8	0.8	0.9	1.0	1.1	1.5	1.4	1.1	0.9	0.9	0.9	
	不明	---	---	---	---	---	---	---	---	---	---	---	---	---	---	---	---	---	---	---	---	---	---	---	
	合計	17.2	13.4	10.4	8.1	6.3	4.3	3.2	2.6	2.4	2.1	2.1	2.4	2.5	2.7	2.9	3.3	3.8	4.4	4.6	4.5	4.5	5.0	5.5	
カナダ 第1&2期、前 期潜伏期	男性	---	---	0.7	0.8	0.7	0.5	0.4	0.7	0.7	0.7	1.2	2.5	4.8	6.1	5.6	7.0	6.4	7.3	9.0	9.1	9.6	---	---	
	女性	---	---	0.5	0.5	0.4	0.3	0.3	0.4	0.5	0.4	0.7	0.6	0.9	0.8	1.0	1.1	1.0	1.1	1.1	0.9	0.7	---	---	
	不明	---	---	---	---	---	---	---	---	---	---	---	---	---	---	---	---	---	---	---	---	---	---	---	
	合計	---	---	0.6	0.6	0.5	0.4	0.4	0.6	0.6	0.6	0.9	1.5	2.9	3.5	3.3	4.0	3.7	4.2	5.0	5.0	5.1	---	---	
オーストラリア すべての梅毒	男性	7.3	12.4	10.2	11.1	8.3	6.9	5.8	8.2	7.8	7.6	9.3	7.6	10.1	0.6	---	---	---	---	---	---	---	---	---	
	女性	7.1	10.3	7.8	8.1	6.8	5.4	4.5	5.5	5.4	5.1	5.8	4.6	4.9	0.6	---	---	---	---	---	---	---	---	---	
	不明	0.3	0.1	0.2	0.2	0.1	0.0	0.0	0.1	0.1	0.0	0.0	0.0	0.0	0.0	---	---	---	---	---	---	---	---	---	
	合計	7.5	11.5	9.2	9.8	7.6	6.2	5.2	6.9	6.7	6.3	7.5	6.1	7.5	0.6	---	---	---	---	---	---	---	---	---	
オーストラリア 2年未満	男性	---	---	---	---	---	---	---	---	---	---	---	---	---	---	5.0	5.2	6.8	12.1	10.9	10.9	9.0	9.9	12.1	13.9
	女性	---	---	---	---	---	---	---	---	---	---	---	---	---	---	1.2	1.3	1.8	1.4	1.4	1.1	1.0	1.4	1.3	1.3
	不明	---	---	---	---	---	---	---	---	---	---	---	---	---	---	0.0	0.0	0.0	0.0	0.0	0.0	0.1	0.0	0.1	
	合計	---	---	---	---	---	---	---	---	---	---	---	---	---	---	3.1	3.2	4.3	6.7	6.1	6.0	5.0	5.7	6.7	7.6
英国 第1期&第2期 (2008より、第1 第2、前期潜伏)	男性	---	---	---	---	---	---	---	---	---	---	---	---	---	5.0	6.8	7.7	7.7	7.5	9.9	9.8	9.1	10.1	10.3	11.3
	女性	---	---	---	---	---	---	---	---	---	---	---	---	---	0.6	0.9	1.1	0.9	0.9	1.4	1.3	1.1	1.1	1.0	1.0
	不明	---	---	---	---	---	---	---	---	---	---	---	---	---	---	---	---	---	---	---	---	---	---	---	---
	合計	---	---	---	---	---	---	---	---	---	---	---	---	---	2.8	3.8	4.3	4.2	4.1	5.6	5.5	5.1	5.5	5.6	6.1

表 15. 梅毒 年齢グループ別 報告数 年次推移 (2)

	1997				1998				1999				2000				2001				2002				
	男性	女性	不明	合計	男性	女性	不明	合計	男性	女性	不明	合計	男性	女性	不明	合計	男性	女性	不明	合計	男性	女性	不明	合計	
0-4	0	0	0	0	0	0	0	0	0	0	0	0	0	0	0	0	0	0	0	0	0	0	0	0	
5-9	0	0	0	0	0	0	0	0	0	0	0	0	0	0	0	0	0	0	0	0	0	0	0	0	
10-14	4	39	43	5	24	29	32	2	23	27	4	19	23	2	17	19	4	11	19	4	11	19	4	11	
15-19	235	513	748	748	193	419	612	163	349	512	142	295	437	142	245	397	135	216	351	135	216	351	507	863	
20-24	819	899	1,718	1,718	509	527	1,036	510	452	962	419	462	881	482	354	836	533	359	892	533	359	892	842	1,384	
25-29	721	714	1,435	1,435	668	521	1,189	506	463	969	327	239	566	583	263	846	676	227	903	676	227	903	886	1,372	
30-34	781	716	1,497	1,497	628	553	1,181	599	495	1,094	553	404	957	660	304	964	837	125	962	837	125	962	1,063	1,526	
35-39	780	627	1,407	1,407	683	494	1,177	676	497	1,173	606	400	1,006	818	328	1,146	1,121	246	1,367	1,121	246	1,367	1,783		
40-44	838	317	1,155	1,155	533	299	832	537	271	808	502	265	767	587	221	808	845	178	1,023	845	178	1,023	1,155	1,628	
45-49	565	205	770	770	377	203	580	372	181	553	328	178	506	432	173	605	425	157	582	425	157	582	713	926	
50-54	224	24	248	248	194	37	231	188	40	228	157	32	189	167	26	193	199	21	220	199	21	220	273	393	
55+	95	8	103	103	66	16	82	65	9	74	48	8	56	57	7	64	58	6	64	58	6	64	83	117	
不明																									
合計	4,667	3,888	8,555	8,555	3,918	3,100	7,018	3,833	2,780	6,613	3,528	2,445	5,973	4,132	1,968	6,100	5,268	1,594	6,862	5,268	1,594	6,862	8,627	11,489	
人口10万人あたり																									
0-4	0.0	0.0	0.0	0.0	0.0	0.0	0.0	0.0	0.0	0.0	0.0	0.0	0.0	0.0	0.0	0.0	0.0	0.0	0.0	0.0	0.0	0.0	0.0	0.0	
5-9	0.0	0.0	0.0	0.0	0.0	0.0	0.0	0.0	0.0	0.0	0.0	0.0	0.0	0.0	0.0	0.0	0.0	0.0	0.0	0.0	0.0	0.0	0.0	0.0	
10-14	0.0	0.4	0.4	0.4	0.1	0.4	0.5	0.0	0.2	0.1	0.0	0.2	0.1	0.0	0.2	0.1	0.0	0.1	0.2	0.1	0.0	0.1	0.2	0.3	
15-19	0.0	0.7	0.7	0.7	0.2	0.7	0.9	0.0	0.5	0.6	0.0	0.5	0.2	0.4	0.6	0.0	0.2	0.4	0.6	0.2	0.4	0.6	0.8	1.3	
20-24	0.0	0.8	0.8	0.8	0.3	0.8	1.1	0.0	0.7	0.8	0.0	0.7	0.4	0.3	0.7	0.0	0.3	0.7	1.0	0.3	0.7	1.0	1.3	2.0	
25-29	0.0	0.8	0.8	0.8	0.4	0.8	1.2	0.0	0.8	1.0	0.0	0.8	0.5	0.4	0.9	0.0	0.5	0.9	1.4	0.5	0.9	1.4	1.8	2.8	
30-34	0.0	0.9	0.9	0.9	0.5	0.9	1.4	0.0	0.9	1.1	0.0	1.0	0.7	0.6	1.3	0.0	0.7	1.3	1.8	0.7	1.3	1.8	2.4	3.6	
35-39	0.0	0.9	0.9	0.9	0.5	0.9	1.4	0.0	0.9	1.1	0.0	1.0	0.7	0.6	1.3	0.0	0.7	1.3	1.8	0.7	1.3	1.8	2.4	3.6	
40-44	0.0	1.0	1.0	1.0	0.6	1.0	1.6	0.0	1.0	1.2	0.0	1.3	0.9	0.7	1.6	0.0	0.9	1.6	2.2	0.9	1.6	2.2	3.0	4.5	
45-49	0.0	0.4	0.4	0.4	0.2	0.4	0.6	0.0	0.3	0.4	0.0	0.4	0.3	0.2	0.5	0.0	0.3	0.5	0.7	0.3	0.5	0.7	0.9	1.4	
50-54	0.0	0.1	0.1	0.1	0.1	0.0	0.1	0.0	0.1	0.0	0.0	0.1	0.0	0.0	0.1	0.0	0.0	0.1	0.1	0.0	0.1	0.1	0.1	0.2	
55+	0.0	0.0	0.0	0.0	0.0	0.0	0.0	0.0	0.0	0.0	0.0	0.0	0.0	0.0	0.0	0.0	0.0	0.0	0.0	0.0	0.0	0.0	0.0	0.0	
不明																									
合計	1.6	2.2	3.8	3.8	1.2	2.2	3.4	1.3	2.0	2.4	1.3	1.9	2.1	1.5	1.4	2.2	3.7	1.1	2.4	3.7	1.1	2.4	3.7	5.2	
人口10万人あたり																									
0-4	0.0	0.0	0.0	0.0	0.0	0.0	0.0	0.0	0.0	0.0	0.0	0.0	0.0	0.0	0.0	0.0	0.0	0.0	0.0	0.0	0.0	0.0	0.0	0.0	
5-9	0.0	0.0	0.0	0.0	0.0	0.0	0.0	0.0	0.0	0.0	0.0	0.0	0.0	0.0	0.0	0.0	0.0	0.0	0.0	0.0	0.0	0.0	0.0	0.0	
10-14	0.0	0.0	0.0	0.0	0.0	0.0	0.0	0.0	0.0	0.0	0.0	0.0	0.0	0.0	0.0	0.0	0.0	0.0	0.0	0.0	0.0	0.0	0.0	0.0	
15-19	0.0	0.3	0.3	0.3	0.1	0.3	0.4	0.0	0.2	0.3	0.0	0.3	0.2	0.3	0.4	0.0	0.2	0.3	0.4	0.2	0.3	0.4	0.6	1.0	
20-24	0.0	0.3	0.3	0.3	0.1	0.3	0.5	0.0	0.3	0.4	0.0	0.4	0.3	0.2	0.5	0.0	0.3	0.5	0.8	0.3	0.5	0.8	1.1	1.7	
25-29	0.0	0.3	0.3	0.3	0.2	0.3	0.5	0.0	0.3	0.4	0.0	0.4	0.3	0.3	0.4	0.0	0.3	0.4	0.6	0.3	0.4	0.6	0.8	1.3	
30-34	0.0	0.4	0.4	0.4	0.2	0.4	0.7	0.0	0.4	0.5	0.0	0.5	0.4	0.3	0.6	0.0	0.4	0.6	0.9	0.4	0.6	0.9	1.2	1.9	
35-39	0.0	0.4	0.4	0.4	0.2	0.4	0.7	0.0	0.4	0.5	0.0	0.5	0.4	0.3	0.6	0.0	0.4	0.6	0.9	0.4	0.6	0.9	1.2	1.9	
40-44	0.0	0.5	0.5	0.5	0.3	0.5	0.8	0.0	0.5	0.6	0.0	0.7	0.5	0.4	0.8	0.0	0.5	0.8	1.2	0.5	0.8	1.2	1.6	2.4	
45-49	0.0	0.2	0.2	0.2	0.1	0.2	0.3	0.0	0.2	0.2	0.0	0.2	0.2	0.1	0.3	0.0	0.2	0.3	0.4	0.2	0.3	0.4	0.5	0.8	
50-54	0.0	0.0	0.0	0.0	0.0	0.0	0.0	0.0	0.0	0.0	0.0	0.0	0.0	0.0	0.0	0.0	0.0	0.0	0.0	0.0	0.0	0.0	0.0	0.0	
55+	0.0	0.0	0.0	0.0	0.0	0.0	0.0	0.0	0.0	0.0	0.0	0.0	0.0	0.0	0.0	0.0	0.0	0.0	0.0	0.0	0.0	0.0	0.0	0.0	
不明																									
合計	0.5	0.6	1.1	1.1	0.4	0.6	0.8	0.3	0.5	0.6	0.3	0.5	0.6	0.4	0.4	0.6	1.0	0.3	0.6	1.0	0.3	0.6	1.0	1.4	
不明																									
合計	0.5	0.6	1.1	1.1	0.4	0.6	0.8	0.3	0.5	0.6	0.3	0.5	0.6	0.4	0.4	0.6	1.0	0.3	0.6	1.0	0.3	0.6	1.0	1.4	

表 15. 梅毒 年齢グループ別 報告数 年次推移 (3)

年齢グループ	2001				2002				2003				2004				2005					
	男性		女性		男性		女性		男性		女性		男性		女性		男性		女性			
	報告数	割合	報告数	割合	報告数	割合	報告数	割合	報告数	割合	報告数	割合	報告数	割合	報告数	割合	報告数	割合	報告数	割合		
0-4	0	0.0	0	0.0	0	0.0	0	0.0	0	0.0	0	0.0	0	0.0	0	0.0	0	0.0	0	0.0	0	0.0
5-9	0	0.0	0	0.0	0	0.0	0	0.0	0	0.0	0	0.0	0	0.0	0	0.0	0	0.0	0	0.0	0	0.0
10-14	1	10.0	2	20.0	9	20.0	10	25.0	10	25.0	13	32.5	13	32.5	2	5.0	8	20.0	13	32.5	19	47.5
15-19	150	150.0	322	322.0	339	339.0	443	443.0	332	332.0	583	583.0	583	583.0	443	443.0	464	464.0	464	464.0	505	505.0
20-24	820	820.0	870	870.0	1023	1023.0	875	875.0	1181	1181.0	1363	1363.0	1363	1363.0	1481	1481.0	1596	1596.0	1617	1617.0	1877	1877.0
25-29	760	760.0	841	841.0	1125	1125.0	1026	1026.0	1244	1244.0	1333	1333.0	1574	1574.0	1574	1574.0	1605	1605.0	1605	1605.0	1641	1641.0
30-34	1023	1023.0	1181	1181.0	1319	1319.0	1248	1248.0	1379	1379.0	1508	1508.0	1617	1617.0	1721	1721.0	1833	1833.0	1949	1949.0	2111	2111.0
35-39	1260	1260.0	1460	1460.0	1647	1647.0	1574	1574.0	1721	1721.0	1833	1833.0	1949	1949.0	2111	2111.0	2233	2233.0	2355	2355.0	2477	2477.0
40-44	1023	1023.0	1181	1181.0	1319	1319.0	1248	1248.0	1379	1379.0	1508	1508.0	1617	1617.0	1721	1721.0	1833	1833.0	1949	1949.0	2111	2111.0
45-49	871	871.0	991	991.0	1025	1025.0	1000	1000.0	1100	1100.0	1192	1192.0	1278	1278.0	1365	1365.0	1453	1453.0	1541	1541.0	1629	1629.0
50-54	1023	1023.0	1181	1181.0	1319	1319.0	1248	1248.0	1379	1379.0	1508	1508.0	1617	1617.0	1721	1721.0	1833	1833.0	1949	1949.0	2111	2111.0
55-59	18	18.0	249	249.0	281	281.0	284	284.0	354	354.0	340	340.0	375	375.0	379	379.0	300	300.0	412	412.0	462	462.0
60+	36	36.0	4	4.0	55	55.0	57	57.0	59	59.0	79	79.0	81	81.0	82	82.0	9	9.0	91	91.0	97	97.0
不明	0	0.0	0	0.0	0	0.0	0	0.0	0	0.0	0	0.0	0	0.0	0	0.0	0	0.0	0	0.0	0	0.0
合計	5959	5959.0	7177	7177.0	7975	7975.0	7305	7305.0	8724	8724.0	9797	9797.0	11459	11459.0	9769	9769.0	11662	11662.0	11466	11466.0	12525	12525.0
人10万人あたり	0.0	0.0	0.1	0.1	0.0	0.0	0.1	0.1	0.0	0.1	0.1	0.1	0.1	0.0	0.0	0.1	0.1	0.1	0.1	0.1	0.1	
女性	0.0	0.0	0.0	0.0	0.0	0.0	0.0	0.0	0.0	0.0	0.0	0.0	0.0	0.0	0.0	0.0	0.0	0.0	0.0	0.0	0.0	
不明	0.0	0.0	0.0	0.0	0.0	0.0	0.0	0.0	0.0	0.0	0.0	0.0	0.0	0.0	0.0	0.0	0.0	0.0	0.0	0.0	0.0	
合計	4.2	4.2	5.3	5.3	5.7	5.7	5.7	5.7	5.1	5.6	5.6	5.6	5.6	5.3	5.6	5.6	5.6	5.6	5.6	5.6	5.6	
0-4	0	0.0	0	0.0	0	0.0	0	0.0	0	0.0	0	0.0	0	0.0	0	0.0	0	0.0	0	0.0	0	0.0
5-9	0	0.0	0	0.0	0	0.0	0	0.0	0	0.0	0	0.0	0	0.0	0	0.0	0	0.0	0	0.0	0	0.0
10-14	0	0.0	0	0.0	0	0.0	0	0.0	0	0.0	0	0.0	0	0.0	0	0.0	0	0.0	0	0.0	0	0.0
15-19	0	0.0	0	0.0	0	0.0	0	0.0	0	0.0	0	0.0	0	0.0	0	0.0	0	0.0	0	0.0	0	0.0
20-24	0	0.0	0	0.0	0	0.0	0	0.0	0	0.0	0	0.0	0	0.0	0	0.0	0	0.0	0	0.0	0	0.0
25-29	0	0.0	0	0.0	0	0.0	0	0.0	0	0.0	0	0.0	0	0.0	0	0.0	0	0.0	0	0.0	0	0.0
30-34	0	0.0	0	0.0	0	0.0	0	0.0	0	0.0	0	0.0	0	0.0	0	0.0	0	0.0	0	0.0	0	0.0
35-39	0	0.0	0	0.0	0	0.0	0	0.0	0	0.0	0	0.0	0	0.0	0	0.0	0	0.0	0	0.0	0	0.0
40-44	0	0.0	0	0.0	0	0.0	0	0.0	0	0.0	0	0.0	0	0.0	0	0.0	0	0.0	0	0.0	0	0.0
45-49	0	0.0	0	0.0	0	0.0	0	0.0	0	0.0	0	0.0	0	0.0	0	0.0	0	0.0	0	0.0	0	0.0
50-54	0	0.0	0	0.0	0	0.0	0	0.0	0	0.0	0	0.0	0	0.0	0	0.0	0	0.0	0	0.0	0	0.0
55-59	0	0.0	0	0.0	0	0.0	0	0.0	0	0.0	0	0.0	0	0.0	0	0.0	0	0.0	0	0.0	0	0.0
60+	0	0.0	0	0.0	0	0.0	0	0.0	0	0.0	0	0.0	0	0.0	0	0.0	0	0.0	0	0.0	0	0.0
不明	0	0.0	0	0.0	0	0.0	0	0.0	0	0.0	0	0.0	0	0.0	0	0.0	0	0.0	0	0.0	0	0.0
合計	0.0	0.0	0.0	0.0	0.0	0.0	0.0	0.0	0.0	0.0	0.0	0.0	0.0	0.0	0.0	0.0	0.0	0.0	0.0	0.0	0.0	
人10万人あたり	0.0	0.0	0.0	0.0	0.0	0.0	0.0	0.0	0.0	0.0	0.0	0.0	0.0	0.0	0.0	0.0	0.0	0.0	0.0	0.0	0.0	
女性	0.0	0.0	0.0	0.0	0.0	0.0	0.0	0.0	0.0	0.0	0.0	0.0	0.0	0.0	0.0	0.0	0.0	0.0	0.0	0.0	0.0	
不明	0.0	0.0	0.0	0.0	0.0	0.0	0.0	0.0	0.0	0.0	0.0	0.0	0.0	0.0	0.0	0.0	0.0	0.0	0.0	0.0	0.0	
合計	0.0	0.0	0.0	0.0	0.0	0.0	0.0	0.0	0.0	0.0	0.0	0.0	0.0	0.0	0.0	0.0	0.0	0.0	0.0	0.0	0.0	

表 15. 梅毒 年齢グループ別 報告数 年次推移 (4)

	2009				2010				2011				2012				2013			
	男性	女性	不明	合計	男性	女性	不明	合計	男性	女性	不明	合計	男性	女性	不明	合計	男性	女性	不明	合計
梅毒 (第1回も第2期)	0-4	0	0	0	0	0	0	0	0	0	0	0	0	0	0	0	0	0	0	0
	5-9	0	1	0	1	0	0	0	1	0	0	0	0	0	0	0	0	0	0	0
	10-14	4	15	0	19	0	11	0	11	0	0	0	0	0	0	0	0	0	0	0
	15-19	681	244	0	925	617	383	2	1002	252	258	0	510	440	218	2	660	700	200	900
	20-24	2242	570	0	2812	2429	424	4	2857	2522	403	2	2927	2859	418	3	3280	3204	435	3642
	25-29	2227	377	1	2605	2181	322	2	2451	2237	280	1	2518	2441	268	4	2691	3537	288	4123
	30-34	1531	284	0	1815	1587	197	0	1784	1637	187	2	1824	2023	182	4	2209	2232	132	2441
	35-39	1409	203	0	1612	1313	140	1	1454	1265	115	2	1382	1443	120	0	1563	1674	125	1805
	40-44	1476	167	0	1643	1448	104	1	1553	1400	91	4	1503	1544	70	4	1688	1587	100	1793
	45-49	1815	218	0	2033	1877	176	3	2056	1999	120	4	2123	2310	128	1	2439	2495	119	2614
	50-54	475	42	0	517	457	36	0	493	510	43	1	554	586	27	1	614	718	34	750
	55+	83	7	0	90	102	5	0	107	120	3	0	123	121	2	0	123	152	10	162
	不明	1	0	0	1	0	0	0	0	0	0	0	0	0	0	0	0	0	0	0
合計	11784	2232	1	13997	11881	1700	13	13774	12423	1801	16	13705	14190	1450	19	15647	13881	1000	14	12375
人口10万人あたり	0-4	0.0	0.0	0.0	0.0	0.0	0.0	0.0	0.0	0.0	0.0	0.0	0.0	0.0	0.0	0.0	0.0	0.0	0.0	
	5-9	0.0	0.0	0.0	0.0	0.0	0.0	0.0	0.0	0.0	0.0	0.0	0.0	0.0	0.0	0.0	0.0	0.0	0.0	
	10-14	0.0	0.2	0.0	0.1	0.1	0.1	0.0	0.1	0.1	0.1	0.0	0.0	0.0	0.0	0.0	0.0	0.1	0.0	
	15-19	60.0	33.0	0.0	45.7	55.0	23.0	0.0	42.4	54.0	24.0	0.0	58.0	53.0	23.0	0.0	45.1	44.0	19.0	42.0
	20-24	202.0	55.0	0.0	131.1	22.1	4.5	0.0	135.2	234.0	3.6	0.0	138.0	248.0	3.6	0.0	145.0	277.0	3.9	16.1
	25-29	182.0	3.6	0.0	113.1	20.0	3.1	0.0	116.2	214.0	2.6	0.0	121.0	244.0	2.6	0.0	139.0	210.0	2.7	15.6
	30-34	155.0	2.9	0.0	93.3	16.0	2.0	0.0	95.0	168.0	1.9	0.0	92.0	193.0	1.7	0.0	108.0	217.0	1.7	11.1
	35-39	138.0	2.0	0.0	78.1	13.1	1.4	0.0	72.2	128.0	1.1	0.0	69.0	149.0	1.2	0.0	80.0	172.0	1.3	9.2
	40-44	141.0	1.6	0.0	78.2	13.9	1.0	0.0	74.2	125.0	0.9	0.0	72.0	148.0	0.7	0.0	77.0	152.0	1.0	8.1
	45-49	83.0	1.0	0.0	48.4	8.5	0.8	0.0	44.9	90.0	0.5	0.0	47.0	106.0	0.6	0.0	55.0	114.0	0.5	5.9
	50-54	28.0	0.2	0.0	15.2	2.6	0.2	0.0	14.2	29.0	0.2	0.0	15.2	32.0	0.1	0.0	16.0	39.0	0.2	1.9
	55+	65.0	0.0	0.0	62.0	68.0	0.0	0.0	68.0	58.0	0.0	0.0	63.0	68.0	0.0	0.0	63.0	68.0	0.0	64.0
	不明	1.4	0.0	0.0	1.4	0.0	0.0	0.0	1.4	0.0	0.0	0.0	0.0	0.0	0.0	0.0	0.0	0.0	0.0	
合計	7.6	0.0	0.0	4.6	7.8	1.1	0.0	6.5	8.2	1.0	0.0	4.5	9.2	0.9	0.0	5.0	10.3	0.9	5.5	
報告数	0-4	0	0	0	0	0	0	0	0	0	0	0	0	0	0	0	0	0	0	
	5-9	0	0	0	0	0	0	0	0	0	0	0	0	0	0	0	0	0	0	
	10-14	0	0	0	0	0	0	0	0	0	0	0	0	0	0	0	0	0	0	
	15-19	39	13	0	52	45	16	0	61	51	16	0	67	60	0	0	60	60	0	60
	20-24	155	38	0	193	152	38	0	190	192	24	0	216	244	23	2	269	214	14	228
	25-29	229	39	0	268	183	31	0	214	238	22	0	260	299	27	0	326	300	27	327
	30-34	204	0	0	204	164	35	0	199	209	27	0	236	241	27	0	268	268	27	295
	35-39	648	43	0	691	718	30	0	748	698	22	0	720	808	22	0	830	808	22	830
	40-44	55	3	0	58	82	2	0	84	88	1	0	89	98	0	0	98	98	0	98
	45-49	0	0	0	0	0	0	0	0	0	0	0	0	0	0	0	0	0	0	
	50-54	0	0	0	0	0	0	0	0	0	0	0	0	0	0	0	0	0	0	
	55+	0	0	0	0	0	0	0	0	0	0	0	0	0	0	0	0	0	0	
	不明	0	0	0	0	0	0	0	0	0	0	0	0	0	0	0	0	0	0	
合計	1021	181	1	1203	1544	152	2	1698	1643	154	0	1797	1900	154	2	2054	1900	154	2054	
オーストラリア (すべての国)	0-4	0	0	0	0	0	0	0	0	0	0	0	0	0	0	0	0	0	0	
	5-9	0	0	0	0	0	0	0	0	0	0	0	0	0	0	0	0	0	0	
	10-14	0	0	0	0	0	0	0	0	0	0	0	0	0	0	0	0	0	0	
	15-19	14	12	0	26	4	15	0	19	7	4	1	12	2	0	2	0	2	0	2
	20-24	130	34	0	164	125	33	0	158	158	21	0	179	181	8	0	189	234	15	249
	25-29	178	34	0	212	151	28	0	179	192	18	0	210	217	12	0	229	264	18	282
	30-34	112	19	0	131	75	15	0	90	87	12	0	99	104	12	0	116	126	12	138
	35-39	129	0	0	129	142	0	0	142	137	0	0	137	147	0	0	147	147	0	147
	40-44	18	0	0	18	28	0	0	28	12	21	0	33	0	0	33	0	0	33	
	45-49	0	0	0	0	0	0	0	0	0	0	0	0	0	0	0	0	0	0	
	50-54	0	0	0	0	0	0	0	0	0	0	0	0	0	0	0	0	0	0	
	55+	0	0	0	0	0	0	0	0	0	0	0	0	0	0	0	0	0	0	
	不明	0	0	0	0	0	0	0	0	0	0	0	0	0	0	0	0	0	0	
合計	80	11	0	91	91	99	0	190	166	0	0	166	179	0	0	179	179	0	179	
オーストラリア 報告数(推定値)	0-4	0	0	0	0	0	0	0	0	0	0	0	0	0	0	0	0	0	0	
	5-9	0	0	0	0	0	0	0	0	0	0	0	0	0	0	0	0	0	0	
	10-14	0	0	0	0	0	0	0	0	0	0	0	0	0	0	0	0	0	0	
	15-19	14	12	0	26	4	15	0	19	7	4	1	12	2	0	2	0	2	0	2
	20-24	130	34	0	164	125	33	0	158	158	21	0	179	181	8	0	189	234	15	249
	25-29	178	34	0	212	151	28	0	179	192	18	0	210	217	12	0	229	264	18	282
	30-34	112	19	0	131	75	15	0	90	87	12	0	99	104	12	0	116	126	12	138
	35-39	129	0	0	129	142	0	0	142	137	0	0	137	147	0	0	147	147	0	147
	40-44	18	0	0	18	28	0	0	28	12	21	0	33	0	0	33	0	0	33	
	45-49	0	0	0	0	0	0	0	0	0	0	0	0	0	0	0	0	0	0	
	50-54	0	0	0	0	0	0	0	0	0	0	0	0	0	0	0	0	0	0	
	55+	0	0	0	0	0	0	0	0	0	0	0	0	0	0	0	0	0	0	
	不明	0	0	0	0	0	0	0	0	0	0	0	0	0	0	0	0	0	0	
合計	119	121	0	240	1008	110	7	1122	1110	163	13	1286	1395	148	0	1543	1474	149	12	
オーストラリア 報告数(推定値)	0-4	0	0	0	0	0	0	0	0	0	0	0	0	0	0	0	0	0	0	
	5-9	0	0	0	0															

表 16. 淋病 報告数 年次推移

		1991	1992	1993	1994	1995	1996	1997	1998	1999	2000	2001	2002	2003	2004	2005	2006	2007	2008	2009	2010	2011	2012	2013
米国	男性	314,006	260,464	207,581	204,920	179,873	149,826	161,835	175,847	179,913	179,651	177,531	171,839	160,459	157,623	161,117	170,508	167,685	153,103	137,819	142,470	149,835	162,235	169,130
	女性	234,285	208,900	172,800	177,979	163,137	146,585	165,136	180,260	179,803	179,128	184,227	179,997	174,645	172,509	177,537	187,033	187,594	182,577	162,568	165,693	171,005	172,066	163,208
	不明	---	---	---	---	---	---	---	---	---	---	---	---	---	---	---	---	712	1,062	787	1,178	1,009	525	666
	合計	548,291	469,364	380,381	382,899	343,010	296,411	326,971	356,107	359,716	359,716	363,136	361,705	351,852	335,104	330,132	339,593	358,366	355,991	336,742	301,174	309,341	321,849	334,826
カナダ	男性	7,086	5,148	3,738	3,478	3,322	2,845	2,646	2,921	3,322	3,829	4,176	4,589	5,025	5,888	5,749	6,844	6,912	7,092	6,136	6,074	6,555	---	---
	女性	5,352	4,093	3,086	2,645	2,385	2,168	1,822	1,938	2,054	2,353	2,571	2,770	3,210	3,422	3,440	4,479	4,955	5,623	5,029	4,659	4,826	---	---
	不明	19	12	8	44	8	10	9	9	5	7	9	6	6	7	10	11	6	8	13	10	16	---	---
	合計	12,457	9,253	6,832	6,167	5,715	5,023	4,477	4,868	5,381	6,189	6,756	7,365	8,241	9,317	9,199	11,334	11,873	12,723	11,178	10,743	11,397	---	---
オーストラリア	男性	1,845	2,073	2,019	2,027	2,257	2,613	3,111	3,702	3,818	3,958	4,239	4,335	4,699	4,901	5,479	5,871	5,052	4,992	5,358	6,865	8,098	9,444	10,454
	女性	778	779	763	917	1,011	1,509	1,868	1,942	1,763	1,919	2,018	2,045	2,079	2,173	2,570	2,722	2,604	2,671	2,616	3,123	3,969	4,114	4,404
	不明	44	28	18	15	17	7	6	15	13	3	4	8	9	93	16	11	8	10	18	19	7	88	
	合計	2,667	2,880	2,800	2,959	3,285	4,129	4,985	5,659	5,594	5,880	6,261	6,388	6,787	7,167	8,065	8,604	7,664	7,673	7,992	10,007	12,107	13,565	14,946
英国	男性	---	---	---	---	---	---	---	8,930	11,326	14,907	16,281	17,498	17,071	15,353	13,622	13,248	12,607	9,820	10,825	11,635	15,039	18,583	21,649
	女性	---	---	---	---	---	---	---	4,282	5,144	6,385	6,885	7,511	7,372	6,492	5,252	5,232	5,684	5,165	5,299	5,200	5,984	6,993	7,637
	男性のうちMSM	---	---	---	---	---	---	---	1,799	1,966	3,051	3,620	3,504	3,951	3,866	4,252	4,427	3,638	---	---	---	---	---	---
	合計	---	---	---	---	---	---	---	13,212	16,470	21,292	23,166	25,009	24,443	21,845	18,874	18,480	18,291	14,985	16,145	16,848	21,024	25,577	29,291

表 17. 淋病 10万人あたり発生率 年次推移

		1991	1992	1993	1994	1995	1996	1997	1998	1999	2000	2001	2002	2003	2004	2005	2006	2007	2008	2009	2010	2011	2012	2013	
米国	男性	280.9	280.9	185.1	182.7	160.8	127.9	123.5	133.2	135.0	130.1	128.6	121.3	112.2	109.1	110.4	115.6	112.8	102.1	91.0	93.9	97.7	105.0	109.5	
	女性	200.0	200.0	147.2	151.7	139.6	120.2	120.9	130.4	129.0	124.9	128.5	122.7	118.2	115.7	118.0	123.1	122.6	118.5	104.5	105.6	108.0	107.9	102.4	
	不明	---	---	---	---	---	---	---	---	---	---	---	---	---	---	---	---	---	---	---	---	---	---	---	
	合計	239.5	239.5	165.8	166.8	149.9	124.0	122.2	131.7	131.9	128.7	128.8	122.0	115.2	112.4	114.6	119.7	118.0	110.7	98.1	100.2	103.3	106.7	106.1	
カナダ	男性	51.0	36.6	26.3	24.2	22.9	19.4	17.8	19.5	22.0	25.1	27.2	29.5	32.0	37.2	36.0	42.4	42.3	42.9	36.7	35.9	38.4	---	---	
	女性	37.9	28.6	21.3	18.1	16.1	14.5	12.0	12.7	13.3	15.1	16.4	17.5	20.1	21.2	21.1	27.3	29.8	33.5	29.6	27.1	27.8	---	---	
	不明	---	---	---	---	---	---	---	---	---	---	---	---	---	---	---	---	---	---	---	---	---	---	---	
	合計	44.4	32.6	23.8	21.2	19.5	16.9	14.9	16.1	17.6	20.1	21.8	23.5	26.0	29.1	28.5	34.8	36.1	38.2	33.1	31.5	33.1	---	---	
オーストラリア	男性	21.4	23.8	22.9	22.8	25.1	28.7	33.8	39.8	40.6	41.6	44.0	44.5	47.6	49.1	54.1	57.1	48.2	46.7	49.0	61.7	71.9	83.6	90.8	
	女性	9.0	8.9	8.6	10.2	11.1	16.4	20.1	20.6	18.5	19.9	20.6	20.7	20.7	21.4	25.0	26.1	24.6	24.7	23.7	27.8	34.9	36.1	37.9	
	不明	0.3	0.2	0.1	0.1	0.1	0.0	0.0	0.1	0.1	0.0	0.0	0.0	0.0	0.5	0.1	0.1	0.0	0.0	0.1	0.1	0.2	0.0	0.4	
	合計	15.4	16.5	15.8	16.6	18.2	22.6	26.9	30.2	29.6	30.7	32.3	32.5	34.1	35.6	39.5	41.6	36.4	35.7	36.4	44.8	52.5	59.7	64.6	
英国	男性	---	---	---	---	---	---	---	---	---	---	---	---	---	59.8	53.5	46.2	44.6	42.1	38.8	42.4	45.2	57.5	70.6	82.2
	女性	---	---	---	---	---	---	---	---	---	---	---	---	---	24.8	21.8	17.1	16.9	18.3	19.8	20.2	19.6	22.2	25.7	28.1
	不明	---	---	---	---	---	---	---	---	---	---	---	---	---	---	---	---	---	---	---	---	---	---	---	---
	合計	---	---	---	---	---	---	---	---	---	---	---	---	---	41.9	37.3	31.3	30.5	30.0	29.1	31.2	32.3	39.6	47.8	54.8

表 18. 淋病 年齢グループ別 報告数 年次推移(1)

	1991				1992				1993				1994				1995				1996				
	男性	女性	不明 /MSM (%)	合計	男性	女性	不明 /MSM (%)	合計	男性	女性	不明 /MSM (%)	合計	男性	女性	不明 /MSM (%)	合計	男性	女性	不明 /MSM (%)	合計	男性	女性	不明 /MSM (%)	合計	
報告数	0-4																								
	5-9																								
	10-14	2,673	7,727	0	10,400	2,258	7,439	0	9,724	1,781	6,404	0	8,185	4,750	6,848	0	8,229	1,074	5,803	0	6,907	807	4,920	5,727	
	15-19	76,335	64,642		140,977	67,712	75,204		137,916	49,073	64,649		113,922	47,950	69,229		117,180	40,304	64,454		104,758	32,663	59,588	0	92,251
	20-24	98,958	75,733		174,691	80,324	68,122		148,446	62,909	52,250		115,159	62,217	52,873		115,090	52,546	47,520		100,066	43,586	42,168		85,752
	25-29	51,550	34,116		85,676	41,555	29,444		70,999	34,589	24,450		59,019	32,803	23,751		56,554	29,735	21,378		51,151	25,611	19,027		44,638
	30-34	41,987	20,687		62,674	34,284	18,523		52,807	24,239	13,787		38,026	23,778	13,552		37,331	21,382	12,449		33,731	17,774	10,477		28,251
	35-39	20,778	7,007		27,785	18,429	7,137		25,566	16,203	6,280		22,483	16,489	6,351		22,840	15,402	6,504		21,906	12,808	5,759		18,567
	40-44	10,520	2,219		12,739	9,179	2,282		11,452	6,809	2,258		11,095	9,411	2,350		11,761	9,153	2,384		11,517	7,954	2,330		10,284
	45-54	9,071	1,384		10,435	8,873	1,416		10,089	6,103	952		7,055	6,930	1,126		8,058	6,721	1,053		7,774	5,994	1,057		7,051
	55-64	2,734	295		3,029	1,787	194		1,981	2,233	281		2,494	1,993	212		2,205	1,811	178		1,989	1,549	165		1,714
	65+	905	289		1,194	787	402		929	914	402		1,316	1,079	473		1,552	754	168		900	699	225		921
	不明																								
合計	314,025	234,285		548,291	260,454	208,900		469,354	207,581	172,600		380,181	204,920	177,878		382,829	179,873	163,137		343,010	148,828	145,585		298,411	
人口10万人あたり	0-4																								
	5-9																								
	10-14	32.4	98.3		64.6	32.4	98.3		64.6	21.0	60.3		50.0	16.6	85.9		50.4	12.6	72.8		42.0	9.1	58.6		33.2
	15-19	954.6	1,112.2		1,031.4	954.6	1,112.2		1,031.4	622.7	886.0		742.1	608.6	920.7		763.4	498.4	839.7		684.6	378.6	724.7		543.7
	20-24	1,031.8	806.0		918.2	1,031.8	806.0		918.2	723.8	626.0		675.9	715.9	633.5		675.5	684.4	624.6		645.9	522.7	542.7		527.6
	25-29	546.4	355.2		452.5	546.4	355.2		452.5	380.5	272.0		620.6	391.1	284.3		312.9	360.6	281.0		311.0	297.7	273.2		260.6
	30-34	418.1	198.8		308.2	418.1	198.8		308.2	243.1	137.5		192.5	237.9	135.1		177.5	225.4	129.7		175.5	185.9	109.3		147.6
	35-39	224.1	74.6		148.8	224.1	74.6		148.8	171.6	65.6		116.3	174.6	68.6		120.3	160.2	67.6		113.7	125.3	58.7		90.9
	40-44	124.8	25.8		74.8	124.8	25.8		74.8	105.4	28.5		65.5	112.8	27.6		83.1	105.4	28.7		65.7	35.3	24.8		54.8
	45-54	79.5	11.5		44.7	79.5	11.5		44.7	50.6	7.6		26.7	57.5	9.0		32.7	51.0	7.2		28.9	42.0	7.2		24.3
	55-64	30.4	2.9		15.9	30.4	2.9		15.9	25.0	2.6		13.3	22.3	2.2		11.7	20.8	1.9		10.9	17.0	1.6		8.9
	65+	7.8	1.6		4.1	7.8	1.6		4.1	7.7	2.3		4.5	9.1	2.7		5.3	6.3	1.0		3.1	5.6	1.3		3.0
	不明																								
合計	280.9	200.0		235.5	280.9	200.0		235.5	183.1	147.2		165.8	187.7	151.7		169.8	160.8	132.6		149.9	127.9	120.2		124.0	
報告数	<1	4	2	0	6	8	7	0	15	1	0	0	1	3	1	0	4	3	1	0	4	1	2	0	3
	1-4	0	12	0	12	0	9	0	9	1	11	0	12	0	4	0	4	2	4	0	6	2	3	0	5
	5-9	0	3	0	3	1	6	0	7	3	3	1	7	1	3	0	4	0	2	0	2	1	2	0	3
	10-14	22	109	0	131	19	140	0	159	8	88	1	97	10	83	0	93	9	75	0	84	5	64	0	69
	15-19	576	1,082	0	1,658	781	1,484	2	2,427	598	1,185	2	1,783	433	947	2	1,382	425	888	2	1,315	345	844	0	1,189
	20-24	1,141	958	1	2,100	1,485	1,195	2	2,682	1,013	937	0	2,010	786	817	2	1,615	768	761	0	1,526	688	952	1	1,241
	25-29	897	454	0	1,351	1,175	582	4	1,761	884	402	0	1,286	821	363	1	1,185	710	347	2	1,059	614	320	0	934
	30-39	831	319	0	1,150	1,138	381	1	1,520	845	298	0	1,143	971	293	4	1,268	980	243	1	1,224	820	210	4	1,034
	40-59	344	93	0	437	428	85	1	514	323	79	0	402	388	92	0	478	380	51	1	412	320	60	0	380
	60+	41	5	0	46	51	12	28	63	28	4	31	31	24	7	38	41	38	1	0	37	16	2	0	18
	不明	3,230	2,315	18	5,563	62	32	2	96	38	19	3	60	23	35	35	93	28	12	2	42	23	9	5	37
	合計	7,086	5,352	19	12,457	5,148	4,093	12	9,253	3,738	3,088	6	6,832	3,478	2,645	44	6,167	3,322	2,385	8	5,715	2,845	2,168	10	5,023
	報告数	<1	1	1	0	2	3	3	0	6	0	0	0	1	0	0	1	1	0	0	1	0	0	0	0
1-4		0	1	0	1	0	1	0	1	0	0	0	0	0	0	0	0	0	0	0	0	0	0	0	
5-9		0	0	0	0	0	0	0	0	0	0	0	0	0	0	0	0	0	0	0	0	0	0	0	
10-14		2	11	0	13	1	14	0	15	0	13	0	16	1	13	0	14	1	11	0	12	1	11	0	12
15-19		581	1,155	0	1,736	609	1,259	0	1,868	599	1,260	0	1,859	430	995	0	1,425	417	922	0	1,339	683	333	863	591
20-24		1,074	934	0	2,008	1,408	1,175	0	2,583	969	991	1	980	769	820	0	1,589	748	869	0	1,617	758	672	681	667
25-29		706	367	0	1,073	955	484	0	1,439	746	348	0	1,094	719	326	0	1,045	639	320	0	959	561	299	432	
30-39		326	130	0	456	452	152	0	604	310	117	0	427	372	114	0	486	374	94	0	470	313	81	189	
40-59		167	23	0	190	120	25	0	145	95	23	0	118	110	28	0	138	100	14	0	114	86	18	51	
60+		2	0	0	2	1	0	0	1	1	0	0	1	0	0	0	1	0	0	0	0	0	0	0	0
不明		46	10	0	56	14	13	0	27	14	13	0	27	17	0	17	0	17	0	0	0	0	0	0	0
合計		510	379	0	889	368	286	0	654	283	213	0	496	242	181	0	423	229	161	0	390	194	145	0	339
報告数		0-4	42	32	1	75	13	16	0	29	8	11	0	19	10	17	0	27	16	17	0	33	9	20	0
	5-9	12	11	1	24	6	15	0	21	0	8	0	8	4	12	0	16	1	5	0	6	4	11	0	15
	10-14	18	34	0	50	12	17	0	29	10	25	0	35	20	33	1	54	23	34	0	57	27	85	0	112
	15-19	258	192	5	455	305	202	4																	

表 18. 淋病 年齢グループ別 報告数 年次推移 (2)

	1997				1998				1999				2000				2001				2002				
	男性	女性	不明 /MSM (※)	合計	男性	女性	不明 /MSM (※)	合計	男性	女性	不明 /MSM (※)	合計	男性	女性	不明 /MSM (※)	合計	男性	女性	不明 /MSM (※)	合計	男性	女性	不明 /MSM (※)	合計	
報告数	0-4																								
	5-9	795	4,945		5,740	823	5,320	6,143	6,255	5,129	5,954	830	5,094	5,925	862	5,179	6,041	784	4,665	5,449	784	4,665	5,449		
	10-14	33,282	86,021		99,303	34,595	71,392	105,987	34,295	70,131	104,429	33,312	68,731	102,043	31,952	69,113	101,085	29,921	66,404	96,325	29,921	66,404	96,325		
	20-24	47,208	48,808		96,016	51,501	54,498	105,999	52,735	56,007	108,741	54,195	58,119	112,313	54,024	61,803	115,827	52,130	60,318	112,449	52,130	60,318	112,449		
	25-29	23,785	21,888		45,673	32,206	23,702	55,908	32,894	23,516	56,410	32,331	23,098	55,429	32,181	23,092	55,273	31,991	24,089	56,080	31,991	24,089	56,080		
	30-34	19,208	11,603		30,811	20,301	12,006	32,307	20,690	11,654	32,344	20,603	11,211	31,814	21,050	11,487	32,537	20,560	11,521	32,081	20,560	11,521	32,081		
	35-39	13,917	6,892		20,809	15,578	7,296	22,874	16,217	7,224	23,441	15,785	6,840	22,625	15,216	6,583	21,799	14,878	6,541	21,419	14,878	6,541	21,419		
	40-44	8,892	2,891		11,783	9,854	3,203	13,057	10,652	3,355	14,007	10,234	3,232	13,466	10,072	3,333	13,405	10,254	3,538	13,791	10,254	3,538	13,791		
	45-49	8,882	1,320		10,202	7,774	1,520	9,294	6,657	1,681	10,338	8,669	1,676	10,344	8,655	1,603	10,258	8,691	2,038	10,727	8,691	2,038	10,727		
	50-54	1,801	245		2,046	1,938	238	2,177	2,122	233	2,359	2,077	222	2,299	2,003	252	2,255	2,019	266	2,284	2,019	266	2,284		
	55+	867	399		1,266	872	339	1,211	722	183	905	722	175	897	651	192	843	631	159	791	631	159	791		
	不明																								
	合計	161,835	195,136		326,971	175,847	160,260	336,107	179,913	179,803	359,716	179,651	179,128	358,779	177,531	184,227	361,758	171,839	179,997	351,838	171,839	179,997	351,838		
人口10万人あたり	0-4																								
	5-9	8.1	53.3		30.1	8.4	58.7	31.9	8.2	53.8	30.5	7.9	50.9	28.9	8.2	51.8	29.4	7.2	45.2	25.8	7.2	45.2	25.8		
	10-14	38.7	71.4		50.8	34.4	75.0	54.2	33.7	70.8	52.8	32.0	69.3	50.4	67.5	49.8	30.7	67.0	47.2	30.7	67.0	47.2			
	20-24	52.3	57.0		54.71	57.2	62.8	59.7	57.4	63.4	60.3	55.9	62.5	59.2	58.6	64.1	61.8	50.7	61.5	59.3	50.7	61.5	59.3		
	25-29	30.4	29.7		29.75	34.3	25.7	30.06	36.1	25.9	30.06	35.0	24.1	28.6	32.8	24.9	28.4	32.5	29.1	29.2	32.5	29.1	29.2		
	30-34	18.8	11.6		14.68	20.9	11.2	16.0	21.2	11.1	16.4	19.6	11.0	15.1	20.9	11.2	15.8	19.6	10.8	15.1	19.6	10.8	15.1		
	35-39	12.3	5.9		9.1	13.8	5.4	10.1	14.6	6.2	10.4	13.3	6.1	9.6	13.4	5.7	9.0	13.5	5.7	9.0	13.5	5.7	9.0		
	40-44	8.3	2.4		5.4	9.1	2.9	5.6	9.5	2.9	6.2	9.0	2.9	6.0	9.0	3.1	6.0	8.9	3.0	6.0	8.9	3.0	6.0		
	45-49	4.8	1.7		2.4	4.0	0.8	2.4	4.5	0.9	2.9	4.3	0.9	2.9	4.3	0.9	2.7	4.5	0.9	2.7	4.5	0.9	2.7		
	50-54	1.2	0.2		0.4	1.1	0.2	0.6	1.0	0.2	0.6	1.0	0.2	0.6	0.9	0.2	0.6	0.9	0.2	0.6	0.9	0.2	0.6		
	55+	6.7	2.0		3.7	6.5	1.7	3.5	5.0	0.9	2.5	5.0	0.9	2.5	4.5	0.9	2.3	4.3	0.8	2.2	4.3	0.8	2.2		
	不明																								
	合計	123.6	120.9		122.2	133.2	120.4	131.7	135.0	129.0	131.6	130.1	124.9	127.5	128.6	128.5	128.5	121.3	122.7	122.0	121.3	122.7	122.0		
報告数	0-4	0	0	0	0	0	0	0	0	0	0	0	0	0	0	0	0	0	0	0	0	0	0		
	1-4	0	0	0	0	0	0	0	0	0	0	0	0	0	0	0	0	0	0	0	0	0	0		
	5-9	0	0	0	0	0	0	0	0	0	0	0	0	0	0	0	0	0	0	0	0	0	0		
	10-14	2	56	0	58	5	51	0	56	2	49	0	51	6	47	0	53	4	58	0	62	0	70		
	15-19	33	716	0	1,049	327	799	0	1,126	337	798	1	1,138	432	969	1	1,402	467	1,007	2	1,476	472	1,049	1,521	
	20-24	599	578	2	1,179	685	575	2	1,262	737	638	0	1,375	824	732	0	1,556	980	852	2	1,834	1,122	872	1,995	
	25-29	370	335	0	705	571	245	0	816	597	293	0	890	658	300	0	958	740	310	1	1,051	814	374	1,188	
	30-34	765	184	2	951	694	184	2	879	1,077	194	1	1,271	1,246	223	0	1,469	1,244	236	3	1,483	1,244	236	1,844	
	40-59	537	42	0	579	406	53	0	459	518	71	0	589	612	71	3	683	704	96	0	800	717	83	883	
	60+	23	4	1	28	32	5	0	37	45	2	0	47	46	6	0	52	53	4	0	57	60	4	64	
	不明	17	3	0	20	14	2	0	16	3	3	0	19	15	1	0	16	3	0	0	17	5	4	21	
	合計	2,646	1,822	9	4,477	2,921	1,938	9	4,868	3,322	2,054	5	5,381	3,829	2,353	7	6,189	4,178	2,571	9	6,758	4,589	2,770	6,735	
	報告数	0-4	0.0	0.0	0.0	0.0	0.0	0.0	0.0	0.0	0.0	0.0	0.0	0.0	0.0	0.0	0.0	0.0	0.0	0.0	0.0	0.0	0.0	0.0	
1-4		0.0	0.0	0.0	0.0	0.0	0.0	0.0	0.0	0.0	0.0	0.0	0.0	0.0	0.0	0.0	0.0	0.0	0.0	0.0	0.0	0.0	0.0		
5-9		0.0	0.2	0.0	0.1	0.3	0.3	0.0	0.3	0.1	0.5	0.0	0.3	0.0	0.0	0.0	0.0	0.0	0.0	0.0	0.0	0.0	0.0		
10-14		0.2	6.7	0.0	2.9	0.5	5.2	0.0	2.8	0.2	5.0	0.0	2.5	0.8	4.7	0.0	2.8	0.4	6.7	0.0	6.7	6.0	0.0	3.3	
15-19		31.3	72.5	0.0	51.7	31.1	80.2	0.0	59.0	31.8	79.5	0.0	55.1	40.8	96.0	0.0	67.8	43.9	97.9	0.0	63.7	43.2	101.5	71.5	
20-24		58.1	58.2	0.0	58.3	64.0	57.7	0.0	61.0	70.0	63.0	0.0	66.8	77.3	71.8	0.0	74.6	90.8	82.6	0.0	86.9	102.1	83.0	92.8	
25-29		52.5	22.1	0.0	37.5	53.0	23.3	0.0	38.3	55.7	28.0	0.0	42.0	61.4	28.7	0.0	45.2	70.3	30.4	0.0	50.7	76.5	36.2	56.6	
30-34		29.3	7.2	0.0	18.4	34.9	7.7	0.0	21.4	42.4	7.7	0.0	25.2	49.8	9.0	0.0	29.5	49.8	9.8	0.0	30.0	55.3	12.6	34.2	
40-59		8.7	1.1	0.0	4.9	10.2	1.3	0.0	5.7	12.8	1.7	0.0	7.1	14.4	1.7	0.0	16.1	22	1.1	0.0	9.1	17.1	2.1	9.6	
60+		1.1	0.1	0.0	0.6	1.5	0.2	0.0	0.7	2.0	0.1	0.0	0.9	2.0	0.2	0.0	1.0	2.3	0.1	0.0	1.1	2.5	0.1	1.2	
不明		17.8	12.0	0.0	14.9	19.5	12.7	0.0	16.1	22.0	13.3	0.0	17.6	25.1	15.1	0.0	20.1	27.2	16.4	0.0	21.8	29.5	17.5	23.5	
合計		178	120	0.0	149	195	127	0.0	220	300	193	0.0	376	476	300	0.0	576	676	376	0.0	776	876	376	576	
報告数		0-4	45	95	0	140	11	22	0	33	11	20	1	32	7	11	0	18	4	11	0	15	2	12	0
	5-9	44	46	0	90	13	6	0	19	4	9	0	13	2	6	0	8	0	1	0	1	2	5	0	7
	10-14	42	96	0	138	26	93	0	119	26	84	0	110	17	108	0	125	27	90	0	117	31	128	0	157
	15-19	444	545	1	990	497	565	3	1,065	495	555	1	1,051	514	649	0	1,183	525	887	2	1,224	491	648	2	1,139
	20-24	672	450	2	1,124	725	472	3	1,200	712	441	2	1,155	731	445	2	1,178	807	462	1	1,270	828	461	1	1,290
	25-29	814	316	1	931	788	337	1	1,126	778	281	1	1,059	799	297	0	1,096	825	341	0	1,166	795	303	3	1,101
	30-34	501	186	1	678	684	207	1	872	672	189	1	863	701	189	0	870	748	192	1	941	770	229	0	999
	35-39	313	97	0	411	422	111	0	533	432	88	5	583	491	108	0	597	559	110	0	669	617	127	0	744
	40-44	177	41	0	218	255	62	1	318	273	54	1	328	267	58	0	325	267	57	0	384	372	54	0	446
	45-49	101	24	0	125	135	24	0	159	157	17	0	174	193	23	0	216	167	23	0	190				

表 18. 淋病 年齢グループ別 報告数 年次推移 (3)

	2003				2004				2005				2006				2007				2008					
	男性	女性	不明 /MM (%)	合計	男性	女性	不明 /MM (%)	合計	男性	女性	不明 /MM (%)	合計	男性	女性	不明 /MM (%)	合計	男性	女性	不明 /MM (%)	合計	男性	女性	不明 /MM (%)	合計		
日本	0-4																									
	5-9																									
	10-14	725	4,204		4,929	630	3,617		4,447	646	3,631		4,276	675	3,574		4,250	140	211		353	119	190		310	
	15-19	27,473	62,862		90,335	26,667	60,947		87,614	27,781	63,830		91,611	30,119	68,405		98,524	619	3,313		4,000	596	3,059		3,650	
	20-24	48,222	58,709		106,931	45,917	57,269		103,187	47,187	59,633		106,820	49,304	61,665		110,969	48,948	62,401		111,349	46,796	61,647		108,443	
	25-29	29,388	74,235		103,623	29,520	75,337		104,857	30,631	76,555		107,186	32,946	78,897		111,843	32,135	78,941		111,076	28,928	75,563		104,491	
	30-34	19,604	11,524		31,128	18,644	11,708		30,352	18,244	11,800		30,044	18,556	12,455		31,011	18,019	12,123		30,142	17,317	11,387		28,704	
	35-39	13,624	3,388		17,012	12,590	3,443		16,033	11,790	3,413		15,203	11,813	3,091		14,904	12,448	3,336		15,784	10,552	2,723		13,275	
	40-44	10,079	3,644		13,723	10,220	3,608		13,828	10,638	3,686		14,324	10,638	3,686		14,324	9,651	3,483		13,134	7,809	2,710		10,519	
	45-49	8,905	2,113		11,018	8,945	2,433		11,378	10,093	2,573		12,666	11,094	2,762		13,856	10,480	2,445		12,925	8,612	2,481		11,093	
	50-54	2,912	303		3,215	2,288	307		2,595	2,399	378		2,777	2,688	451		3,137	2,575	308		2,883	2,188	423		2,611	
	55+	617	128		745	615	130		745	631	132		763	648	152		800	617	89		706	545	103		648	
	不明																									
	合計	160,459	174,645		335,104	157,623	172,509		330,132	161,557	178,036		339,593	176,062	187,484		363,546	187,885	187,594		375,479	153,103	182,577		335,680	
	人口10万人あたり	0-4																								
5-9																										
10-14		6.7	40.7		23.3	5.8	37.0		21.0	6.0	35.7		21.5	6.4	35.5		20.6	6.0	33.4		19.4	5.8	31.2		18.3	
15-19		26.2	63.2		44.1	25.0	60.2		42.9	25.5	61.3		43.1	27.4	63.2		45.9	26.5	63.7		45.7	27.3	63.5		45.2	
20-24		45.2	58.4		51.9	45.0	59.2		49.2	44.6	59.4		50.2	45.9	60.5		52.5	45.1	61.0		52.2	43.5	60.8		51.4	
25-29		30.5	76.9		28.1	29.5	74.9		28.0	29.3	77.1		28.5	31.3	76.4		29.6	29.2	78.5		29.4	26.4	76.2		26.5	
30-34		18.1	11.2		14.7	16.5	11.5		14.8	17.7	11.9		14.9	18.9	12.1		15.9	18.9	12.9		15.4	16.4	11.1		14.6	
35-39		12.9	5.8		8.6	12.3	6.1		14.0	12.5	6.5		14.0	12.9	6.5		14.6	12.7	6.2		13.6	12.3	5.5		12.0	
40-44		8.4	3.1		5.8	8.2	3.2		6.8	9.1	3.4		6.8	9.5	3.6		6.6	8.8	3.4		5.9	7.7	2.9		5.1	
45-49		4.4	1.0		2.7	4.2	1.1		2.9	4.2	1.1		2.9	5.0	1.2		3.2	4.9	1.1		3.0	3.4	1.1		2.5	
50-54		1.5	0.2		0.3	1.6	0.2		0.1	1.4	0.2		0.1	1.7	0.2		0.9	1.6	0.2		0.7	1.3	0.2		0.7	
55+		0.4	0.1		0.2	0.4	0.1		0.2	0.4	0.1		0.2	0.4	0.1		0.2	0.4	0.1		0.2	0.4	0.1		0.2	
不明																										
合計		112.2	116.2		115.2	109.1	115.7		112.4	110.7	118.4		114.6	115.9	123.4		119.7	112.8	122.6		118.0	102.1	118.5		107.7	
カナダ		0-4																								
	5-9																									
	10-14	0	0		0	0	0		0	0	0		0	0		0	0	0		0	0	0		0		
	15-19	5.5	1.2		1.3	6.2	1.1		1.4	6.4	1.2		1.4	7.0	1.2		1.4	6.2	1.4		1.4	6.7	1.2		1.2	
	20-24	12.4	1.0		2.2	14.6	1.0		2.5	13.8	1.1		2.7	16.3	1.2		4.3	16.3	1.2		4.3	16.3	1.2		3.7	
	25-29	8.0	4.1		3.0	10.1	4.5		3.4	10.3	4.6		3.5	12.1	4.6		4.1	12.6	4.6		4.1	12.6	4.6		3.9	
	30-34	13.2	3.4		1.7	15.3	3.7		1.7	14.9	3.4		1.7	16.3	3.7		2.1	16.3	3.7		2.1	16.3	3.7		2.1	
	35-39	8.6	1.7		1.0	11.1	1.7		1.0	11.0	1.7		1.0	12.7	1.7		1.5	12.7	1.7		1.5	12.7	1.7		1.0	
	40-44	7.3	1		0.1	8.3	1		0.1	8.3	1		0.1	9.3	1		0.1	9.3	1		0.1	9.3	1		0.1	
	45-49	1.2	3		2	1.8	3		2	1.8	3		2	2.6	3		2	2.6	3		2	2.6	3		2	
	50-54	0.6	0.2		0.2	0.6	0.2		0.2	0.6	0.2		0.2	0.6	0.2		0.2	0.6	0.2		0.2	0.6	0.2		0.2	
	55+	0.2	0.1		0.1	0.2	0.1		0.1	0.2	0.1		0.1	0.2	0.1		0.1	0.2	0.1		0.1	0.2	0.1		0.1	
	不明																									
	合計	50.2	32.0		6.2	58.0	34.2		7.3	57.9	34.0		10.9	64.4	44.9		11.2	64.4	45.0		6.6	118.2	70.2	62.3		8.1
	人口10万人あたり	0-4																								
5-9																										
10-14		0	0		0	0	0		0	0	0		0	0		0	0	0		0	0	0		0		
15-19		4.9	1.1		0.3	5.7	1.2		0.3	5.4	1.1		0.3	6.1	1.1		0.3	5.4	1.1		0.3	5.4	1.1		0.3	
20-24		10.8	0.4		0.1	12.0	0.4		0.1	11.5	0.4		0.1	13.1	0.4		0.1	13.1	0.4		0.1	13.1	0.4		0.1	
25-29		6.7	3.5		0.8	8.5	3.5		0.8	8.5	3.5		0.8	9.7	3.5		0.8	9.7	3.5		0.8	9.7	3.5		0.8	
30-34		11.2	1.4		0.1	12.6	1.4		0.1	12.6	1.4		0.1	13.6	1.4		0.1	13.6	1.4		0.1	13.6	1.4		0.1	
35-39		7.2	1.4		0.2	8.6	1.4		0.2	8.6	1.4		0.2	9.6	1.4		0.2	9.6	1.4		0.2	9.6	1.4		0.2	
40-44		1.9	0.2		0.1	2.1	0.2		0.1	2.1	0.2		0.1	2.1	0.2		0.1	2.1	0.2		0.1	2.1	0.2		0.1	
45-49		0.3	0.2		0.1	0.3	0.2		0.1	0.3	0.2		0.1	0.3	0.2		0.1	0.3	0.2		0.1	0.3	0.2		0.1	
50-54		0.1	0.1		0.1	0.1	0.1		0.1	0.1	0.1		0.1	0.1	0.1		0.1	0.1	0.1		0.1	0.1	0.1		0.1	
55+		0.1	0.1		0.1	0.1	0.1		0.1	0.1	0.1		0.1	0.1	0.1		0.1	0.1	0.1		0.1	0.1	0.1		0.1	
不明																										
合計		37.0	21.0		2.0	37.2	21.2		2.1	35.0	21.1		2.1	38.5	21.2		34.8	42.3	29.8		36.1	42.9	33.5		38.2	
オーストラリア		0-4																								
	5-9																									
	10-14	40	115		155	25	138		165	39	161		202	23	105		158	47	137		184	28	149		177	
	15-19	590	744		1,335	667	739		1,402	781	856		1													

表 18. 淋病 年齢グループ別 報告数 年次推移(4)

	2000																2010																2011																2012																2013															
	不明				不明				不明				不明				不明				不明				不明				不明				不明				不明				不明																																							
	男性	女性	M/MSM (英)	合計	男性	女性	M/MSM (英)	合計	男性	女性	M/MSM (英)	合計	男性	女性	M/MSM (英)	合計	男性	女性	M/MSM (英)	合計	男性	女性	M/MSM (英)	合計	男性	女性	M/MSM (英)	合計	男性	女性	M/MSM (英)	合計	男性	女性	M/MSM (英)	合計																																												
報告数	0-4	83	141	2	226	70	167	10	247	43	136	3	182	72	122	4	198	80	111	1	172	13	77	0	90	10	53	1	64	15	66	1	82	16	52	0	68	11	64	0	75																																							
	5-9	507	2471	5	2983	486	2498	32	3016	548	2648	27	3223	573	2559	4	3138	508	2122	7	2637	10	10	0	10	10	10	0	10	10	10	0	10	10	10	0	10	10	10	0	10																																							
	10-14	27,444	59,353	199	86,996	28,002	59,877	381	88,250	28,102	59,747	290	88,139	26,578	54,852	118	81,548	24,212	47,749	131	72,092	43,986	56,436	223	100,645	46,708	58,574	337	105,619	46,633	61,756	341	111,730	52,351	62,711	162	115,224	53,955	59,760	220	113,035																																							
	15-19	20,019	23,719	120	49,855	20,818	23,907	165	50,890	20,828	24,821	136	53,245	31,631	26,722	88	58,441	34,718	27,268	118	62,102	14,504	10,178	65	24,607	14,509	10,510	82	25,401	16,044	11,044	69	27,157	18,938	12,406	48	31,420	20,958	13,143	67	34,065																																							
	20-24	6,504	2,446	25	8,975	6,745	2,495	22	9,262	6,955	2,708	23	9,666	7,858	3,089	18	10,955	8,850	3,192	35	11,817	7,311	1,934	29	9,294	7,490	2,043	22	9,555	8,222	2,222	29	10,473	9,773	2,594	16	12,383	11,087	2,714	22	13,823																																							
	25-29	1,849	363	1	2,212	1,852	336	4	2,194	2,270	471	6	2,747	2,542	556	2	3,230	3,176	621	5	3,202	446	108	0	554	411	105	4	520	485	99	3	587	537	105	2	644	696	128	1	825																																							
	30-34	300	394	72	766	257	228	68	554	258	191	40	489	775	588	33	1,376	312	193	20	525	1,849	363	1	2,212	1,852	336	4	2,194	2,270	471	6	2,747	2,542	556	2	3,230	3,176	621	5	3,202																																							
	35-39	8,987	4,928	46	13,971	8,812	4,907	50	13,769	8,972	5,096	41	14,109	10,493	5,670	30	16,193	11,850	6,145	39	18,034	7,311	1,934	29	9,294	7,490	2,043	22	9,555	8,222	2,222	29	10,473	9,773	2,594	16	12,383	11,087	2,714	22	13,823																																							
	40-44	1,349	363	1	2,212	1,852	336	4	2,194	2,270	471	6	2,747	2,542	556	2	3,230	3,176	621	5	3,202	446	108	0	554	411	105	4	520	485	99	3	587	537	105	2	644	696	128	1	825																																							
	45-49	446	108	0	554	411	105	4	520	485	99	3	587	537	105	2	644	696	128	1	825	300	394	72	766	257	228	68	554	258	191	40	489	775	588	33	1,376	312	193	20	525																																							
	50-54	137,819	182,568	767	301,174	142,470	165,693	1,178	309,341	149,835	171,005	1,009	321,849	182,235	172,086	525	334,826	189,130	163,208	666	333,004	137,819	182,568	767	301,174	142,470	165,693	1,178	309,341	149,835	171,005	1,009	321,849	182,235	172,086	525	334,826	189,130	163,208	666	333,004																																							
	55-59	0.8	1.4	0	2.2	0.7	1.7	0	2.4	0.4	1.4	0	1.8	0.7	1.2	0	1.9	1.0	0.6	1.1	0.9	0.8	1.4	0	2.2	0.7	1.7	0	2.4	0.4	1.4	0	1.8	0.7	1.2	0	1.9	1.0	0.6	1.1	0.9																																							
	60+	0.1	0.8	0	0.9	0.1	0.5	0	0.6	0.3	0.7	0	1.0	0.2	0.5	0	0.7	0.3	0.1	0.6	0.4	0.4	0.8	0	0.8	0.1	0.6	0	0.6	0.3	0.7	0	1.0	0.2	0.5	0	0.7	0.3	0.1	0.6	0.4																																							
合計	137,819	182,568	767	301,174	142,470	165,693	1,178	309,341	149,835	171,005	1,009	321,849	182,235	172,086	525	334,826	189,130	163,208	666	333,004	137,819	182,568	767	301,174	142,470	165,693	1,178	309,341	149,835	171,005	1,009	321,849	182,235	172,086	525	334,826	189,130	163,208	666	333,004																																								
人口10万人あたり	0-4	0.8	1.4	0	2.2	0.7	1.7	0	2.4	0.4	1.4	0	1.8	0.7	1.2	0	1.9	1.0	0.6	1.1	0.9	0.8	1.4	0	2.2	0.7	1.7	0	2.4	0.4	1.4	0	1.8	0.7	1.2	0	1.9	1.0	0.6	1.1	0.9																																							
	5-9	0.1	0.8	0	0.9	0.1	0.5	0	0.6	0.3	0.7	0	1.0	0.2	0.5	0	0.7	0.3	0.1	0.6	0.4	0.4	0.8	0	0.8	0.1	0.6	0	0.6	0.3	0.7	0	1.0	0.2	0.5	0	0.7	0.3	0.1	0.6	0.4																																							
	10-14	5.0	25.3	0.5	26.3	4.6	24.7	0.5	25.2	14.6	5.2	26.2	15.6	5.4	25.3	0.5	26.3	4.6	24.7	0.5	25.2	14.6	5.2	26.2	15.6	5.4	25.3	0.5	26.3	4.6	24.7	0.5	25.2	14.6	5.2	26.2	15.6	5.4	25.3	0.5	26.3																																							
	15-19	248.3	566.0	403.9	403.9	247.7	557.6	400.4	400.4	248.6	556.5	399.9	399.9	242.4	527.5	381.8	381.8	220.9	459.2	337.5	337.5	248.3	566.0	403.9	403.9	247.7	557.6	400.4	400.4	248.6	556.5	399.9	399.9	242.4	527.5	381.8	381.8	220.9	459.2	337.5	337.5	248.3																																						
	20-24	396.5	540.3	467.3	467.3	396.5	540.3	467.3	467.3	396.5	540.3	467.3	467.3	396.5	540.3	467.3	467.3	396.5	540.3	467.3	467.3	396.5	540.3	467.3	467.3	396.5	540.3	467.3	467.3	396.5	540.3	467.3	467.3	396.5	540.3	467.3	467.3	396.5	540.3	467.3	467.3	396.5																																						
	25-29	234.1	224.6	230.0	230.0	232.2	228.4	241.2	241.2	234.1	224.6	230.0	230.0	232.2	228.4	241.2	241.2	234.1	224.6	230.0	230.0	232.2	228.4	241.2	241.2	234.1	224.6	230.0	230.0	232.2	228.4	241.2	241.2	234.1	224.6	230.0	230.0	232.2	228.4	241.2	241.2	234.1																																						
	30-34	142.1	104.1	123.7	123.7	142.1	104.1	123.7	123.7	142.1	104.1	123.7	123.7	142.1	104.1	123.7	123.7	142.1	104.1	123.7	123.7	142.1	104.1	123.7	123.7	142.1	104.1	123.7	123.7	142.1	104.1	123.7	123.7	142.1	104.1	123.7	123.7	142.1	104.1	123.7	123.7	142.1																																						
	35-39	66.9	48.4	68.0	68.0	66.9	48.4	68.0	68.0	66.9	48.4	68.0	68.0	66.9	48.4	68.0	68.0	66.9	48.4	68.0	68.0	66.9	48.4	68.0	68.0	66.9	48.4	68.0	68.0	66.9	48.4	68.0	68.0	66.9	48.4	68.0	68.0	66.9	48.4	68.0	68.0	66.9																																						
	40-44	61.9	23.3	42.8	42.8	61.9	23.3	42.8	42.8	61.9	23.3	42.8	42.8	61.9	23.3	42.8	42.8	61.9	23.3	42.8	42.8	61.9	23.3	42.8	42.8	61.9	23.3	42.8	42.8	61.9	23.3	42.8	42.8	61.9	23.3	42.8	42.8	61.9	23.3	42.8	42.8	61.9																																						
	45-54	33.6	8.6	20.6	20.6	33.6	8.6	20.6	20.6	33.6	8.6	20.6	20.6	33.6	8.6	20.6	20.6	33.6	8.6	20.6	20.6	33.6	8.6	20.6	20.6	33.6	8.6	20.6	20.6	33.6	8.6	20.6	20.6	33.6	8.6	20.6	20.6	33.6	8.6	20.6	20.6	33.6																																						
	55-54	11.0	2.0	6.4	6.4	11.0	2.0	6.4	6.4	11.0	2.0	6.4	6.4	11.0	2.0	6.4	6.4	11.0	2.0	6.4	6.4	11.0	2.0	6.4	6.4	11.0	2.0	6.4	6.4	11.0	2.0	6.4	6.4	11.0	2.0	6.4	6.4	11.0	2.0	6.4	6.4	11.0																																						
	60+	2.7	0.5	1.4	1.4	2.7	0.5	1.4	1.4	2.7	0.5	1.4	1.4	2.7	0.5	1.4	1.4	2.7	0.5	1.4	1.4	2.7	0.5	1.4	1.4	2.7	0.5	1.4	1.4	2.7	0.5	1.4	1.4	2.7	0.5	1.4	1.4	2.7	0.5	1.4	1.4	2.7																																						
	合計	91.0	104.6	88.1	88.1	91.0	104.6	88.1	88.1	91.0	104.6	88.1	88.1	91.0	104.6	88.1	88.1	91.0	104.6	88.1	88.1	91.0	104.6	88.1	88.1	91.0	104.6	88.1	88.1	91.0	104.6	88.1	88.1	91.0	104.6	88.1	88.1	91.0	104.6	88.1	88.1	91.0																																						
報告数	<1	1	0	0	1	1	0	1	0	1	0	1	0	1	0	1	0	1	0	1	0	1	0	1	0	1	0	1	0	1	0	1	0	1	0	1	0	1	0	1	0	1																																						
	1-4	0	8	0	8	0	0	0	0	0	0	0	0	0	0	0	0	0	0	0	0	0	0	0	0	0	0	0	0	0	0	0	0	0	0	0	0	0	0	0	0	0	0																																					
	5-9	0	0	0	0	0	0	0	0	0	0	0	0	0	0	0	0	0	0	0	0	0	0	0	0	0	0	0	0	0	0	0	0	0	0	0	0	0	0	0	0	0	0																																					
	10-14	8	68	0	76	16	62	0	78	20	60	0	80	10	60	0	70	10	60	0	70	10	60	0	70	10	60	0	70	10	60	0	70	10	60	0	70	10	60	0	70	10	60																																					
	15-19	705	1,590	3	2,298	642	1,459	0	2,111	650	1,415	0	2,065	705	1,590	3	2,298	642	1,459	0	2,111	650	1,415	0	2,065	705	1,590	3	2,298	642	1,459	0	2,111	650	1,415	0	2,065	705	1,590	3	2,298	642	1,459	0																																				
	20-24	1,684	1,682	4	3,370	1,590	1,511	3	3,074	1,684	1,587	3	3,274	1,684	1,682	4</																																																																

表 8～表 18.

* 出典

米国	Centers for Disease Control and Prevention (CDC). Sexually Transmitted Disease Surveillance, 1993-2013. 以下のURLより入手可, URL: http://www.cdc.gov/std/stats/ (Last accessed March 31, 2015) 注1) 男性と女性を加えたものと合計に誤差あり
カナダ	Public Health Agency of Canada. Report on Sexually transmitted infections in Canada:2011. July 2014. 以下のURLより入手可, URL: http://www.phac-aspc.gc.ca/sti-its-surv-epi/rep-rap-2011/index-eng.php (last accessed March 31, 2015)
オーストラリ	The Kirby Institute for infection and immunity in society. HIV, viral hepatitis and sexually transmissible infections in Australia Annual Surveillance Report 2014 以下のURLより入手可, URL: http://www.ncheer.unsw.edu.au/NCHECRweb.nsf/page/Annual+Surveillance+Reports (Last accessed March 31, 2015) Australian government, Department of Health and Ageing, National Notifiable Diseases Surveillance System 内 “Notifications of SELECTED DISEASE by Age Group and Sex” よりデータをダウンロード集計 以下のURLよりアクセス可, URL: http://www9.health.gov.au/oda/source/oda-index.cfm (Last accessed March 31, 2015) 注1) 2004年より梅毒について先天性、2年未満、2年以上および期間不明に3分割。この表では2004年より2年未満のみの数字になっている。 注2) 「不明」欄の発生率について、特定の性別や年齢グループまで分割することができないので、人口全体における発生率になっている。
イギリス	Health Protection Agency. STI Annual data tables. 2008年以降: Table 1: STI diagnoses & rates in England, 2004-2013 以下のURLより入手可, URL: https://www.gov.uk/government/statistics/sexually-transmitted-infections-stis-annual-data-tables (Last accessed March 31, 2015) 2007年以前報告数: Table 2: Total number of STI diagnoses and other episodes of care seen at genitourinary medicine clinics, UK&England 2000-2009 以下のURLより入手可, URL: http://www.hpa.org.uk/Topics/InfectiousDiseases/InfectionsAZ/STIs/STIsAnnualData/ (Last accessed March 31, 2011) 注1) スコットランドの地域保健局のデータ収集において問題が起こったため、2000年のスコットランドのデータは少し欠損している。 注2) 2009年は、21/207クリニックからの51/818GUMCAD (訳注:2009年からイングランドで導入されたSTIサーベイランスデータ)が入手できなかった。データは補正済み。

海外及び国内の HIV/性感染症の流行とリスク情報の収集分析に関する研究（2） HIV/AIDS Surveillance Systems in selected developed countries

S. Pilar Suguimoto、木原雅子、木原正博
京都大学大学院医学研究科社会健康医学系専攻社会疫学分野

要 約

1996 年に多剤併用療法が導入されて以来、AIDS 病期にまで進行する HIV 感染者は著しく減少し、先進国で、AIDS 患者報告数及び AIDS 死の報告数が大きく減少した。一方我国では、他の先進国で見られたような AIDS 患者報告数の急減は未だに観察されておらず、せいぜいここ数年横這いになった程度である。こうした違いは、HIV 検査普及の程度、つまり、HIV 感染者の早期発見の違いに起因すると思われるが、比較の前提となるサーベイランスシステムの制度の違いについて、これまでその詳細が論じられたことはない。そこで本研究では、米国、英国、フランス、ドイツ、カナダ、オーストラリアについて、インターネットでまで網羅的に検索し（91 に上る文献や web サイト）、HIV/AIDS サーベイランスの仕組みと主な動向を調査した。米国以外は、1993 年の米国 CDC の診断基準を踏襲し（日本も同様）、米国のみが 2008 年に CD4 数を基準とする新たな診断基準に変更している。報告は、全ての国で、診断年ベースで行なわれ（日本のみ報告年）、報告の遅れを毎年補正するため、報告数は過去に遡って毎年修正されている。また、全ての国で、重複報告を避けるために、何らかの同定指標 identifier（Soundex コードなど）が導入されている（日本は同定指標なし）。日本とは異なり、HIV 感染者の定義には、AIDS を含む全病期が含まれているが、AIDS の統計は、AIDS に相当する症例を切り出して集計されている。これらの結果から、日本と他の主要先進国の AIDS 統計の比較について、以下のように考察した。

- (1) 英国、フランス、ドイツ、カナダ、オーストラリアについては一貫して同じ HIV/AIDS の判定基準が使われているため、1996 年以降の AIDS 動向の我国との違いは、診断基準の変化によるものではない。米国についても、主な診断基準の変更は 2008 年であるため、それまでの AIDS 報告の減少は、診断基準の変更によるものではない。
- (2) 他の先進国では、診断年と報告遅れの調整が行なわれているため、毎年微妙に報告数が変わるが、数年で飽和するため、先進国での減少は、報告遅れによるものではない。ただし、直近の統計については、数字が数年間変動（主に増加）するので、比較においては注意が必要である。
- (3) 米国では、AIDS（Stage III）と一度診断された例は、その後治療で症状が改善してもそれ以下の stage に再分類されることはない（注：英国、フランス、ドイツ、オーストラリアについては明確な記述は見当たらないが、数年経ち報告遅れが補正されれば、AIDS 報告数は不変となるため、これらの国でも同様と考えられる）。
- (4) カナダでは我国と同様、重複報告が区別できないシステムになっているが、この国でも、1996 年以降、AIDS 報告数は明瞭に減少しているので、我国と先進国との違いを、重複報告の影響に帰することは難しい。

以上より、我国と、他の先進諸国との間の AIDS 報告数の動向のパターンの違いに、制度上の違いを指摘することはできなかった。

1) Objective

The main purpose of this report is to describe the HIV and AIDS case surveillance systems in the United States, Canada, Australia, United Kingdom, Germany and the European Region. We also include a brief description of main components of their second generation HIV surveillance systems.

2) Methodology

We reviewed relevant information on current HIV and AIDS case reporting systems in the selected developed countries and European Region. We searched online databases, reports and their references, and all information provided by each institution responsible for national HIV/AIDS surveillance activities in the selected countries. We also used PubMed to search for relevant papers providing more details of the surveillance systems.

The main responsible institutions in each country and the European Region are:

- * United States: Center for Diseases Control and Prevention(<http://www.cdc.gov/>)
- * Canada: Public Health Agency of Canada (<http://www.phac-aspc.gc.ca/>)
- * Australia: The Kirby Institute (formerly known as the National Centre in HIV Epidemiology and Clinical Research) (<http://www.kirby.unsw.edu.au/>)
- * European Region European Centre for Disease Prevention and Control (<http://ecdc.europa.eu/en/Pages/home.aspx>)
- * United Kingdom: Health Protection Agency (<http://www.hpa.org.uk/HPAwebHome/>) (from April 2013, Public Health England)
- * Germany: Robert Koch Institute (<http://www.rki.de>)
The Federal Health Monitoring System (<http://www.gbe-bund.de>)

A comparison of important characteristics of the AIDS and HIV case reporting between the selected countries and the European Region can be found at the end of this report in Appendix I.

3) Results

a) UNITED STATES

In the United States (US) the Centers for Disease Control and Prevention (CDC) conducts and coordinates HIV/AIDS surveillance activities throughout cooperative agreements with state and local health departments.¹ All states and US territories report diagnoses of HIV infection to the CDC's National HIV Surveillance System using a uniform surveillance case definition and report form. Historically, surveillance for HIV/AIDS has been accomplished largely through three data collection systems: AIDS case reporting, HIV infection reporting, and measurements of HIV seroprevalence in selected populations.

The US is categorized as having a concentrated/low-prevalence epidemic.² Despite the increases in the total number of people living with HIV infections in recent years, from 2008 through 2011 the annual estimated number and estimated rate of diagnoses of HIV infection (regardless of the stage of disease) has remained stable, as well as the estimated number and estimated rate of diagnoses of stage 3 (AIDS).³ In 2011, the estimated rate of diagnoses of HIV and Stage 3 (AIDS) were 15.8 and 10.3 per 100,000 population, respectively. Men who have sex with men (MSM), Black/African Americans, and Hispanic/Latinos are the population most profoundly affected by

HIV. Of all new infections, 63% account for MSM and regarding race/ethnicity, Black/African Americans account for 44% and Hispanic/Latinos for 21%.

AIDS and HIV Case Surveillance

Reporting System: National HIV Surveillance System

AIDS surveillance started in 1981 when the epidemic was first recognized. By 1986, all 50 states, the District of Columbia, and several US dependent areas had implemented AIDS case reporting. Beginning of 1985, many states implemented HIV case reporting as part of an integrated HIV and AIDS surveillance system. States implemented confidential name-based HIV infection reporting at different times. But, as of April 2008, all 50 states, the District of Columbia, and 6 US dependent areas (American Samoa, Guam, Northern Mariana Island, Puerto Rico, Republic of Palau, and the Is Virgin Islands) have implemented the same confidential name-based reporting standards to collect HIV surveillance data. All cases are reported to CDC without identifying information. Assessments of duplicate cases occur both on the state and national level (potential duplicates are identified based on soundex code and selected demographic characteristics), and elimination of such cases occurs at the state level. Soundex is a hashing system that converts a string into a four-character code (See Appendix II). HIV reporting provides information on demographic characteristics (i.e., sex, race/ethnicity, age, and place of diagnosis), transmission category (mode of exposure), initial immune status, and viral load.

Several times since the beginning of the HIV epidemic, the CDC has revised the surveillance case definitions. Initially, the AIDS case definition was based on the diagnosis of specific opportunistic infections and malignancies.⁴ Following the development of the serologic antibody test for HIV in 1985, serologic evidence was incorporated into the case definition.⁵ In 1987, a cased definition was introduced that classified HIV infection in children less than 13 years as indeterminate, asymptomatic, or symptomatic.⁶ Also, the cased definition was substantially expanded to include other HIV-related conditions.⁷ In 1993, low CD4 cell count was included into the AIDS case definition.⁸ In 1994, the classification of pediatric cases was simplified and revised to reflect the stage of disease.⁹ Although throughout the 1980s and early 1990s the emphasis on AIDS case reporting continued, the Council of State and Territorial Epidemiologists adopted a resolution on a revised case definition for HIV reporting of adults, adolescents and children in 1998. CDC published guidelines for conducting integrated HIV and AIDS surveillance using this case definition in 1999.¹⁰

In December 2008, the CDC released key changes to the case definitions.¹¹ For adults and adolescents (aged ≥ 13 years), the HIV infection classification system and the surveillance case definitions for HIV infection and AIDS have been revised and combined into a single case definition for HIV infection. The HIV infection case definition for children aged <13 years and the AIDS case definition for children aged 18 months to <13 years have been revised. No changes have been made to the HIV infection classification system⁹, the AIDS-defining conditions^{7,9} for children aged <13 years, or the AIDS case definition for children aged <18 months.

Each state has laws requiring certain diseases be reported at the state level, but it is voluntary for states to provide information or notification to CDC at the federal level (without direct

personal identifiers) for nationwide aggregation and monitoring of disease data. AIDS was nationally notifiable from 2000 to 2008. HIV infection (AIDS has been reclassified as HIV stage III) is designated as a nationally notifiable disease from 2009.¹²

Adults and Adolescents (aged ≥13 years)

Case Definition

For adults and adolescents (aged ≥13 years), the case definitions for HIV infection and AIDS have been revised into a single case definition for HIV infection that includes AIDS and incorporates the HIV infection classification system (Table 1). Laboratory confirmation is now required to meet the surveillance case definition for HIV infection, including HIV infection stage 3 (AIDS). Diagnostic confirmation of an AIDS-defining condition alone, without laboratory confirmation, is no longer sufficient. The classification system has been simplified with less emphasis on clinical conditions by elimination of clinical categories A and B while retaining the AIDS-defining conditions in clinical category C. A confirmed case meets the laboratory criteria for diagnosis of HIV infection and one of the four HIV infection stages (stage 1, 2, 3 or unknown). The definition applies to all HIV variants.

The three CD4 cell count categories have been renamed for HIV infection, increasing in severity from stage 1 through stage 3 (AIDS) and an unknown stage is also included. Once cases are classified into a surveillance severity stage, they cannot be reclassified into a less severe stage.

Results of Adults and Adolescents Case Surveillance

In 2011, males accounted for 79% of all diagnoses in this age group. The rate of infection among males is much higher (31 per 100,000) compared to that of adult and adolescent females (8 per 100,000). By race, Black/African Americans face the most severe burden of HIV; Hispanics/Latinos are also disproportionately affected (Figure 1). Regarding transmission category, the percentage of diagnosed HIV infections attributed to MSM increased from 55% in 2008 to 62% in 2011; while those attributed to injection drug use (IDU), MSM *and* IDU, and to heterosexual contact remained relatively stable (less than a 5% increase or decrease) from 2008 through 2011 (Figure 2). The number of HIV infections stage 3 (AIDS) among persons with infection attributed to MSM continues to represent the highest number stage 3 (AIDS) classifications each year (Figure 3).

Figure 1

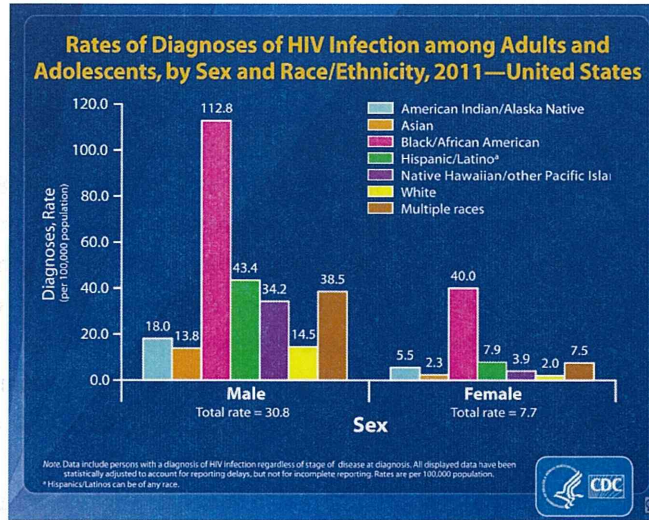


Figure 2

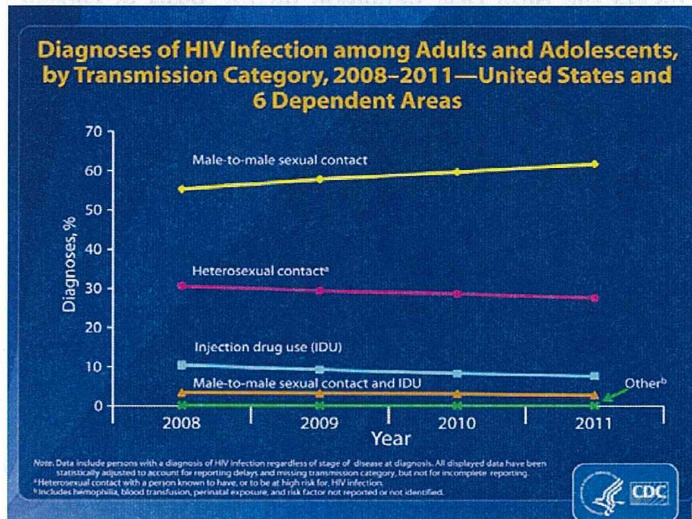
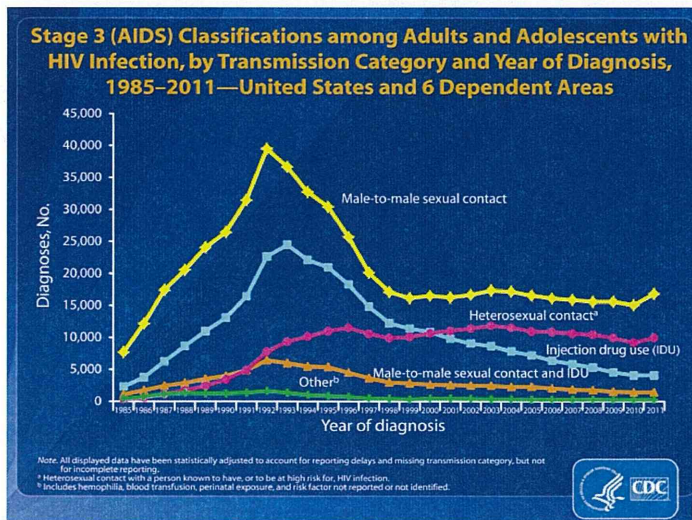


Figure 3



(Source: Centers for Disease Control and Prevention)

Children <18 months

Case Definition

Case definition applies to all variants of HIV. The previous surveillance guidelines (1999) recommended four categories of HIV infection for children aged <18 months (definitively infected, presumptively infected, definitively uninfected, and presumptively uninfected).¹⁰ Changes have been made in the surveillance case definition of presumptively uninfected with HIV for children aged <18 months at the time of diagnosis. Thus, compared with infants categorized using the previous surveillance case definition, fewer HIV-exposed infants who have a very low probability of infection will be categorized as having indeterminate infections. No major revisions have been made to the remaining three categories, and no changes have been made to the conditions listed under the AIDS criteria in the 1987 pediatric surveillance case definition for children in this age group. Children in this age group with perinatal HIV exposure whose illness meets the AIDS case definition on the basis of clinical criteria are considered presumptively HIV infected when the mother has laboratory confirmed HIV infection. Nucleic acid amplification tests (either RNA-PCR or DNA-PCR) are the preferred method to either exclude or diagnose HIV infection in this age group.

Children aged 18 months to <13 years

Case Definition

The case definition applies to all variants of HIV. Laboratory-confirmed evidence of HIV infection is now required for all reported cases of HIV infection among children aged 18 months to <13 years. Diagnostic confirmation of an AIDS-defining condition alone, without laboratory-confirmed evidence of HIV infection, is no longer sufficient to classify a child as HIV infected for surveillance purposes. No changes have been made to the 24 AIDS-defining conditions or the HIV infection classification system for children aged <13 years.

Results of Children Case Surveillance

The rates of diagnoses of HIV infection and HIV infection Stage 3 (AIDS) remained stable for children (ages less than 13 years). The estimated rate of diagnosis of HIV infection in 2011 was 0.4 per 100,000 population.

Supplemental HIV Surveillance Systems

HIV Incidence Surveillance¹³

In 2004, as an integrated component of the National HIV Surveillance System CDC began collection of data on HIV testing behaviors and antiretroviral use history and results from the serologic testing algorithm for recent HIV seroconversion (Serologic Testing Algorithm for Recent HIV Seroconversions, (STARHS)) as part of routine surveillance activities in the states and cities that conduct HIV incidence surveillance. These data are sent to CDC after removal of personally identifying information. In addition, incidence surveillance coordinators at state and local health departments work closely with commercial/private, public, and hospital-based laboratories to