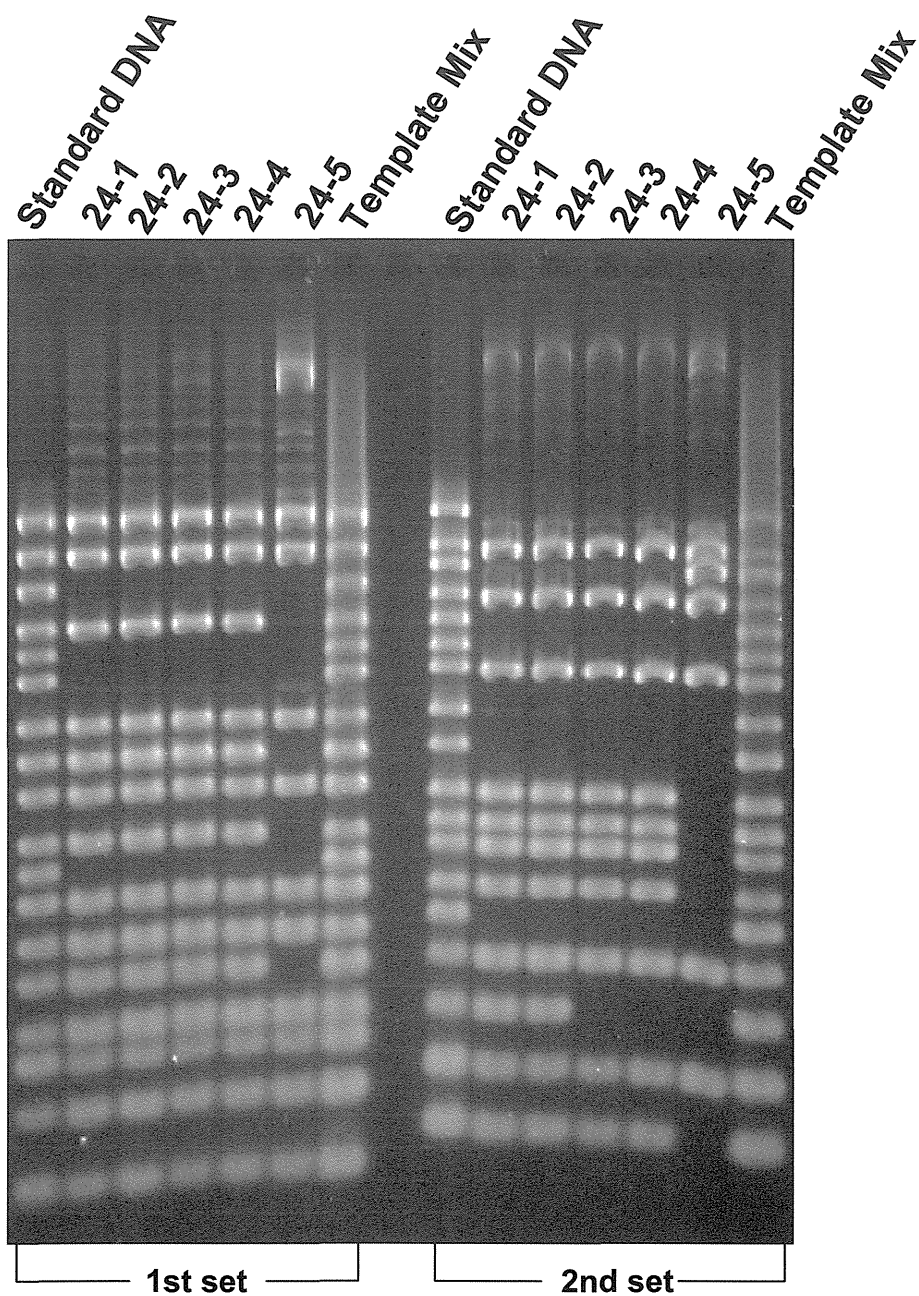


施設4



テンプレートの調製

取扱説明書のとおり。

反応液組成 (1st set, 2nd set 共通)

Primer Mix 2 μ L

2 \times IS-P Master Mix 10 μ L

Template (または Template Mix) 0.4 μ L

H₂O にて 20 μ L

PCR 条件

取扱説明書のとおり。

3%アガロースゲル(0.5%TBE)へのアプライ量

2 μ L、約 2 時間泳動

1st set

Primer No.	Size	24-1	24-2	24-3	24-4	24-5
1-01	974	1	1	1	1	1
1-02	839	1	1	1	1	1
1-03	742	0	0	0	0	0
1-04	645	1	1	1	1	0
1-05	595	0	0	0	0	0
1-06	561	0	0	0	0	0
1-07	495	1	1	1	1	1
1-08	442	1	1	1	1	0
1-09	405	1	1	1	1	1
1-10	353	1	1	1	1	0
1-11	325	0	0	0	0	0
1-12	300	1	1	1	1	1
1-13	269	1	1	1	1	1
1-14	241	1	1	1	1	0
1-15	211	1	1	1	1	1
eae	185	1	1	1	1	1
1-16	171	1	1	1	1	1
hlyA	137	1	1	1	1	1

2nd set

Primer No.	Size	24-1	24-2	24-3	24-4	24-5
2-01	987	0	0	0	0	0
2-02	861	1	1	1	1	1
2-03	801	0	0	0	0	1
2-04	710	1	1	1	1	1
2-05	642	0	0	0	0	0
2-06	599	0	0	0	0	0
2-07	555	1	1	1	1	1
2-08	499	0	0	0	0	0
2-09	449	0	0	0	0	0
2-10	394	1	1	1	1	0
2-11	358	1	1	1	1	0
2-12	331	1	1	1	1	0
2-13	301	1	1	1	1	0
2-14	278	0	0	0	0	0
2-15	240	1	1	1	1	1
2-16	211	1	1	0	0	0
stx2	181	1	1	1	1	1
stx1	151	1	1	1	1	0

PFGE 試験結果
施設5

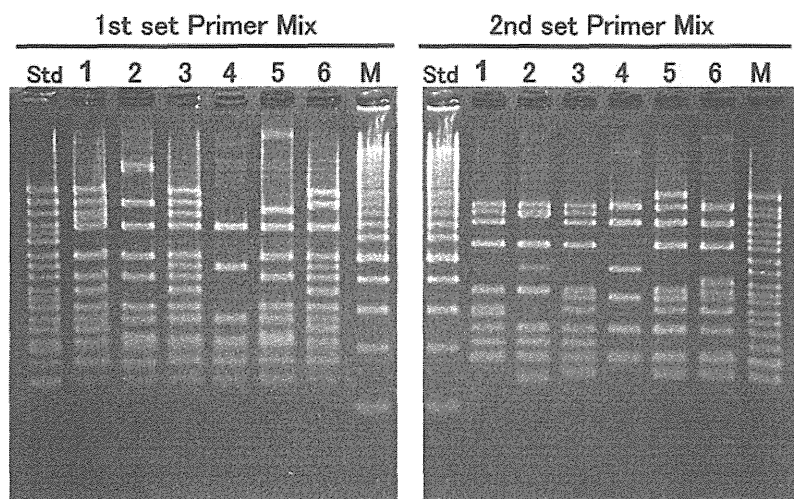


図1 IS-Printing PCR 泳動図

Std Standard DNA
lane 1 EC3380
lane 2 EC3381
lane 3 EC3382
lane 4 EC3415
lane 5 EC3416
lane 6 EC3420
M 0.1-2kbp ladder DNA

1st set

Primer No.	Size	EC	EC	EC	EC	EC	EC	EC
		3382	3415	3416	3420	3440	3441	3455
1-01	974	1	0	0	1	1	1	1
1-02	839	1	0	0	1	1	1	1
1-03	742	1	0	1	0	1	0	0
1-04	645	1	1	1	1	1	0	0
1-05	595	0	0	0	0	0	0	0
1-06	561	0	0	0	0	0	1	1
1-07	495	1	0	1	1	1	1	1
1-08	442	1	1	0	1	1	0	0
1-09	405	1	0	1	1	1	1	1
1-10	353	1	0	0	1	1	0	0
1-11	325	0	0	0	0	0	0	0
1-12	300	1	0	1	1	1	1	1
1-13	269	1	1	1	1	1	1	1
1-14	241	0	0	0	1	1	0	0
1-15	211	1	1	1	1	1	1	1
eae	185	1	1	1	1	1	1	1
1-16	171	1	1	1	1	0	1	1
hlyA	137	1	1	1	1	1	1	1

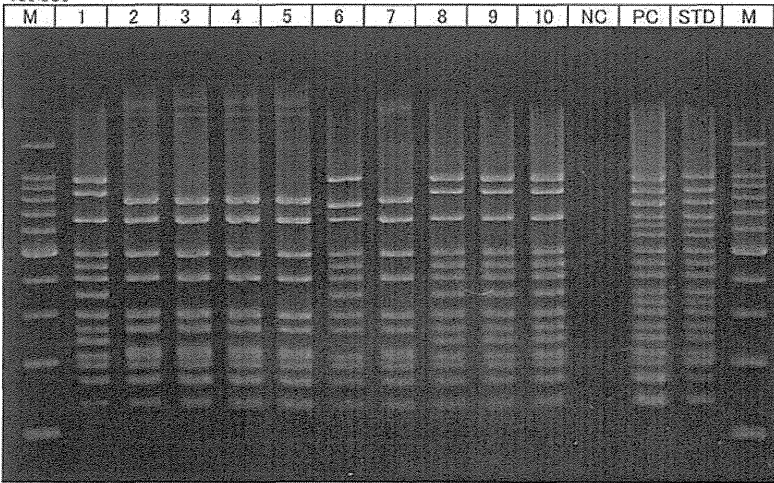
2nd set

Primer No.	Size	EC	EC	EC	EC	EC	EC	EC
		3382	3415	3416	3420	3440	3441	3455
2-01	987	0	0	1	0	0	1	1
2-02	861	1	1	1	1	1	1	1
2-03	801	1	0	0	0	1	0	0
2-04	710	1	1	1	1	1	1	1
2-05	642	0	0	0	0	0	0	0
2-06	599	0	0	0	0	0	0	0
2-07	555	1	0	1	1	1	1	1
2-08	499	0	0	0	0	0	0	0
2-09	449	0	1	0	0	0	0	0
2-10	394	0	0	0	1	0	0	0
2-11	358	1	0	1	1	1	1	1
2-12	331	1	1	1	1	1	1	1
2-13	301	1	0	1	1	1	1	1
2-14	278	0	0	0	0	0	0	0
2-15	240	1	1	1	1	1	1	1
2-16	211	1	0	0	0	1	0	0
stx2	181	1	1	1	1	1	1	1
stx1	151	1	0	1	1	1	0	0

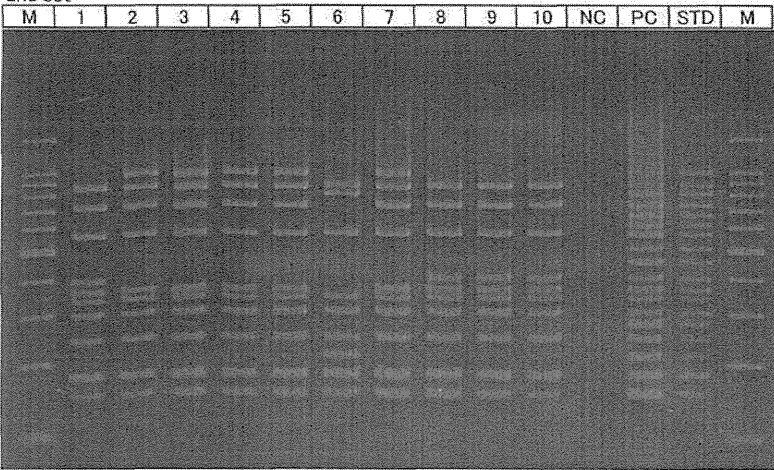
(参考) IS-printing system 画像

別紙1-2

1st set



2nd set



IS-printing system

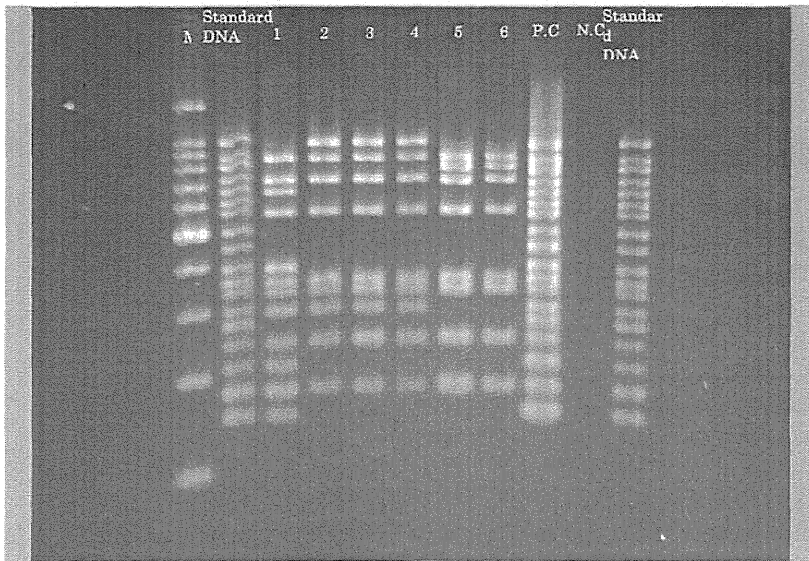
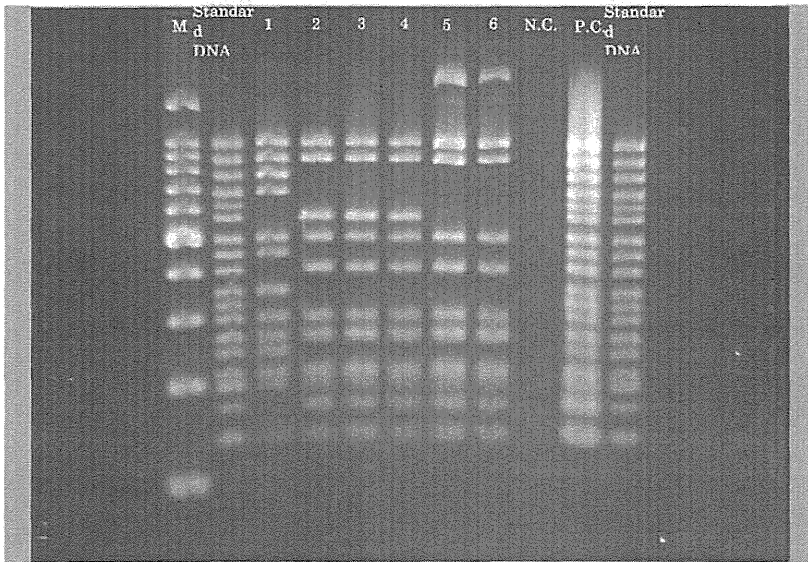
1st set

Primer No.	Size	1	2	3	4	5	6	7	8	9	10
1-01	974	1	0	0	0	0	1	0	1	1	1
1-02	839	1	0	0	0	0	0	0	1	1	1
1-03	742	0	1	1	1	1	1	1	0	0	0
1-04	645	1	1	1	1	1	1	1	1	1	1
1-05	595	0	0	0	0	0	0	0	0	0	0
1-06	561	0	0	0	0	0	0	0	0	0	0
1-07	495	1	1	1	1	1	1	1	1	1	1
1-08	442	1	0	0	0	0	1	0	1	1	1
1-09	405	1	1	1	1	1	1	1	1	1	1
1-10	353	1	0	0	0	0	1	0	1	1	1
1-11	325	0	0	0	0	0	0	0	0	0	0
1-12	300	1	1	1	1	1	1	1	1	1	1
1-13	269	1	1	1	1	1	1	1	1	1	1
1-14	241	1	0	0	0	0	0	0	1	1	1
1-15	211	1	1	1	1	1	1	1	1	1	1
eae	185	1	1	1	1	1	1	1	1	1	1
1-16	171	1	1	1	1	1	1	1	1	1	1
hlyA	137	1	1	1	1	1	1	1	1	1	1

2nd set

Primer No.	Size	1	2	3	4	5	6	7	8	9	10
2-01	987	0	1	1	1	1	0	1	0	0	0
2-02	861	1	1	1	1	1	1	1	1	1	1
2-03	801	0	0	0	0	0	1	0	0	0	0
2-04	710	1	1	1	1	1	0	1	1	1	1
2-05	642	0	0	0	0	0	0	0	0	0	0
2-06	599	0	0	0	0	0	0	0	0	0	0
2-07	555	1	1	1	1	1	1	1	1	1	1
2-08	499	0	0	0	0	0	0	0	0	0	0
2-09	449	0	0	0	0	0	0	0	0	0	0
2-10	394	1	0	0	0	0	0	0	1	1	1
2-11	358	1	1	1	1	1	0	1	1	1	1
2-12	331	1	1	1	1	1	1	1	1	1	1
2-13	301	1	1	1	1	1	1	1	1	1	1
2-14	278	0	0	0	0	0	0	0	0	0	0
2-15	240	1	1	1	1	1	1	1	1	1	1
2-16	211	0	0	0	0	0	1	0	0	0	0
stx2	181	1	1	1	1	1	1	1	1	1	1
stx1	151	1	1	1	1	1	1	1	1	1	1

施設7



1st set

Primer No.	Size	1	2	3	4	5	6
1-01	974	1	1	1	1	1	1
1-02	839	1	1	1	1	1	1
1-03	742	1	0	0	0	0	0
1-04	645	1	0	0	0	0	0
1-05	595	0	0	0	0	0	0
1-06	561	0	1	1	1	0	0
1-07	495	1	1	1	1	1	1
1-08	442	1	0	0	0	0	0
1-09	405	0	1	1	1	1	1
1-10	353	1	0	0	0	0	0
1-11	325	0	0	0	0	0	0
1-12	300	1	1	1	1	1	1
1-13	269	1	1	1	1	1	1
1-14	241	1	0	0	0	0	0
1-15	211	1	1	1	1	1	1
eae	185	1	1	1	1	1	1
1-16	171	0	1	1	1	1	1
hlyA	137	1	1	1	1	1	1

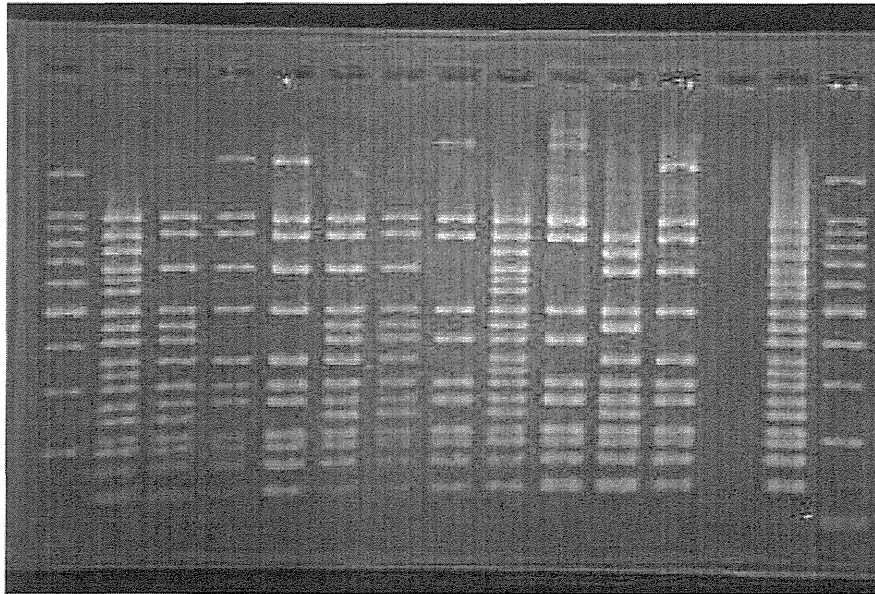
2nd set

Primer No.	Size	1	2	3	4	5	6
2-01	987	0	1	1	1	0	0
2-02	861	1	1	1	1	1	1
2-03	801	0	0	0	0	1	1
2-04	710	1	1	1	1	1	1
2-05	642	1	0	0	0	0	0
2-06	599	0	0	0	0	0	0
2-07	555	1	1	1	1	1	1
2-08	499	0	0	0	0	0	0
2-09	449	0	0	0	0	0	0
2-10	394	1	0	0	0	0	0
2-11	358	1	1	1	1	1	1
2-12	331	1	1	1	1	1	1
2-13	301	1	1	1	1	0	0
2-14	278	0	0	0	0	0	0
2-15	240	1	1	1	1	1	1
2-16	211	1	0	0	0	0	0
stx2	181	1	1	1	1	1	1
stx1	151	1	0	0	0	0	0

施設8

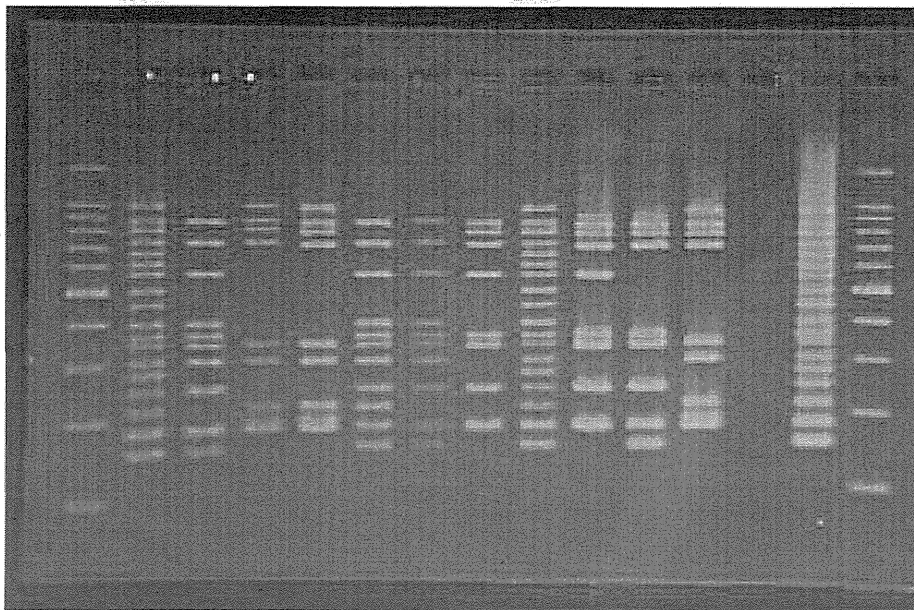
M	Standard DNA	12-142	12-143	12-144	12-158	12-159	12-169	Standard DNA	12-170	12-172	12-173	Nc	Pc	M
---	--------------	--------	--------	--------	--------	--------	--------	--------------	--------	--------	--------	----	----	---

1st SET



M	Standard DNA	12-142	12-143	12-144	12-158	12-159	12-169	Standard DNA	12-170	12-172	12-173	Nc	Pc	M
---	--------------	--------	--------	--------	--------	--------	--------	--------------	--------	--------	--------	----	----	---

2nd SET



IS-printing system

1st set

Primer No.	Size	12-1	12-13	12-23	12-72	12-83	12-84	12-85	12-86	12-88	12-95	12-96	12-97	12-98	12-142	12-143	12-144	12-158	12-159	12-169	12-170	12-172	12-173
1-01	974	1	1	1	1	1	1	1	1	1	1	1	1	1	1	1	1	1	1	1	1	0	1
1-02	839	1	1	1	1	1	1	1	1	1	1	1	1	1	1	1	1	1	1	1	1	1	1
1-03	742	0	0	0	0	0	0	0	0	0	0	0	0	0	0	0	0	0	0	0	0	1	0
1-04	645	0	0	1	1	1	1	1	1	1	1	1	0	0	1	1	1	1	1	1	0	0	1
1-05	595	0	0	0	0	0	0	0	0	0	0	0	0	0	0	0	0	0	0	0	0	0	0
1-06	561	1	1	0	0	0	0	0	0	0	0	0	0	0	0	0	0	0	0	0	0	0	0
1-07	495	1	1	1	1	1	1	1	1	1	1	1	1	1	1	1	1	1	1	1	1	1	1
1-08	442	0	0	1	1	1	1	1	1	1	1	1	0	0	1	0	0	1	1	0	0	1	0
1-09	405	1	1	1	1	1	1	1	1	1	1	1	1	1	0	0	1	1	1	1	1	0	0
1-10	353	0	0	0	1	1	1	1	1	1	1	1	0	0	1	1	1	1	1	0	0	1	1
1-11	325	0	0	0	0	0	0	0	0	0	0	0	0	0	0	0	0	0	0	0	0	0	0
1-12	300	1	1	1	1	1	1	1	1	1	1	1	1	1	1	1	1	1	1	1	1	1	1
1-13	269	1	1	1	1	1	1	1	1	1	1	1	1	1	1	1	1	1	1	1	1	1	1
1-14	241	0	0	1	1	1	1	1	1	1	1	1	0	0	1	0	0	1	1	0	0	1	0
1-15	211	1	1	1	1	1	1	1	1	1	1	1	1	1	1	1	1	1	1	1	1	1	1
ee	185	1	1	1	1	1	1	1	1	1	1	1	1	1	1	1	1	1	1	1	1	1	1
1-16	171	1	1	1	1	1	1	1	1	1	1	1	1	1	1	1	1	1	1	1	1	1	1
hlyA	137	1	1	1	1	1	1	1	1	1	1	1	1	1	1	1	1	1	1	1	1	1	1

2nd set

Primer No.	Size	12-1	12-13	12-23	12-72	12-83	12-84	12-85	12-86	12-88	12-95	12-96	12-97	12-98	12-142	12-143	12-144	12-158	12-159	12-169	12-170	12-172	12-173
2-01	987	1	1	0	0	0	0	0	0	0	0	0	0	0	0	1	1	0	0	0	0	0	1
2-02	861	1	1	1	1	1	1	1	1	1	1	1	1	1	1	1	1	1	1	1	1	1	1
2-03	801	0	0	1	0	0	0	0	0	0	0	0	0	0	0	1	1	0	0	1	1	1	1
2-04	710	1	1	1	1	1	1	1	1	1	1	1	1	1	1	1	1	1	1	1	1	1	1
2-05	642	0	0	0	0	0	0	0	0	0	0	0	0	0	0	0	0	0	0	0	0	0	0
2-06	599	0	0	0	0	0	0	0	0	0	0	0	0	0	0	0	0	0	0	0	0	0	0
2-07	555	1	1	1	1	1	1	1	1	1	1	1	1	1	1	0	0	1	1	1	1	0	0
2-08	499	0	0	0	0	0	0	0	0	0	0	0	0	0	0	0	0	0	0	0	0	0	0
2-09	449	0	0	0	0	0	0	0	0	0	0	0	0	0	0	0	0	0	0	0	0	0	0
2-10	394	0	0	1	1	1	1	1	1	1	1	1	0	0	1	0	0	1	1	0	0	0	0
2-11	358	1	1	1	1	1	1	1	1	1	1	1	1	1	1	0	0	1	1	1	1	1	0
2-12	331	1	1	1	1	1	1	1	1	1	1	1	1	1	1	1	1	1	1	1	1	1	1
2-13	301	1	1	1	1	1	1	1	1	1	1	1	0	0	1	1	1	1	1	0	0	0	1
2-14	278	0	0	0	0	0	0	0	0	0	0	0	0	0	0	0	0	0	0	0	0	0	0
2-15	240	1	1	1	1	1	1	1	1	1	1	1	1	1	0	0	1	1	1	1	1	1	0
2-16	211	0	0	1	0	0	0	0	0	0	0	0	0	0	0	1	1	1	0	0	0	0	1
stx2	181	1	1	1	1	1	1	1	1	1	1	1	1	1	1	1	1	1	1	1	1	1	1
stx1	151	0	0	1	1	1	1	1	1	1	1	1	0	0	1	0	0	1	1	0	0	1	0