

図 1

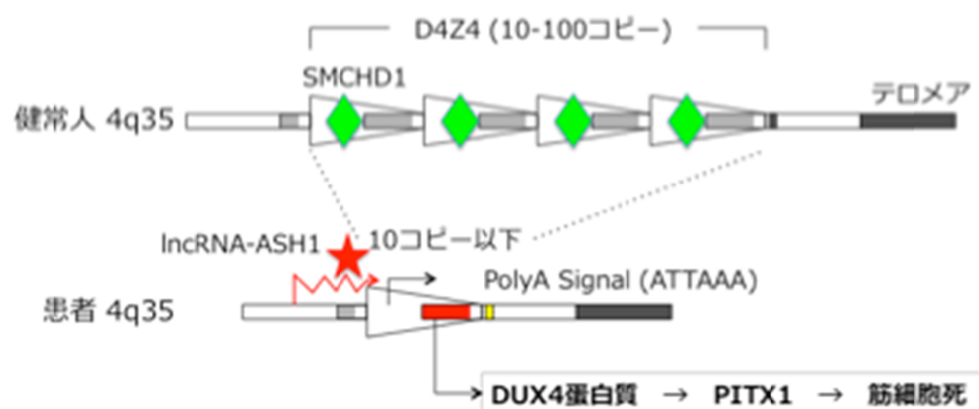


図 2

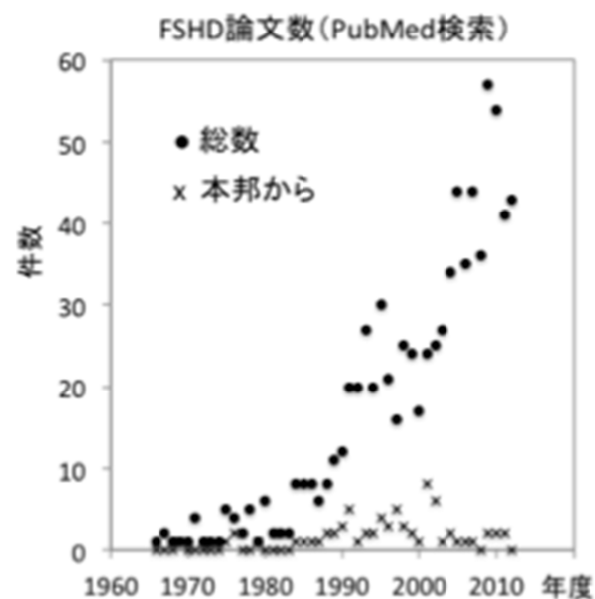


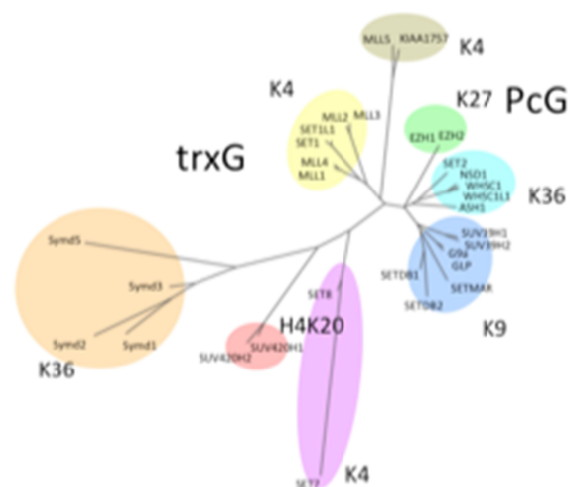
図 3



図 4



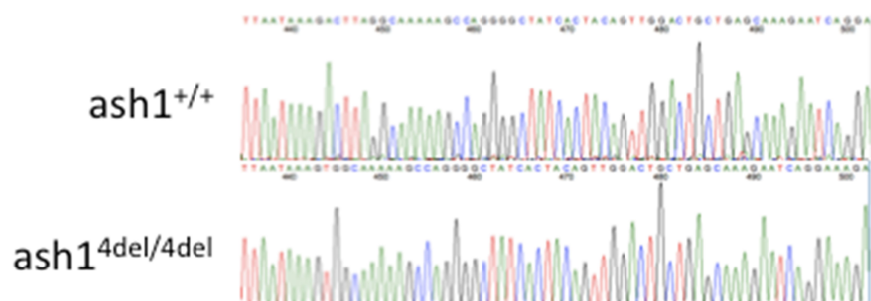
☒ 5



☒ 6

Ash1		Suz12		G9a (Ehmt2)	
+/+	7	+/+	23	+/+	3
+/-	14	+/-	6	+/-	5
-/-	1	-/-	1	-/-	1
ND	2	ND	0	ND	3
Total	24	Total	30	Total	12

☒ 7

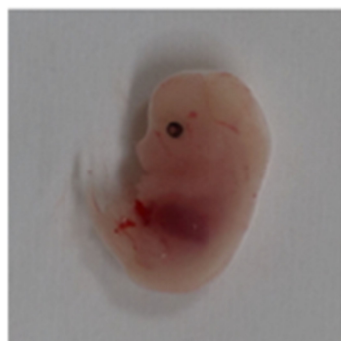


☒ 8

ash1^{+/+}



ash1^{4del/4del}



☒ 9

ash1^{4del/4del}



図 1 0

ASH1	生直後			1ヶ月		
	+/+	+/-	-/-	+/+	+/-	-/-
KO1	17	6	5	17	5	1*
KO2	(5)	(2)	(2)	7	4	1*

図 1 1

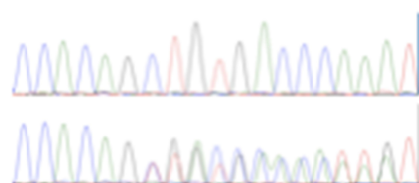


図 1 2

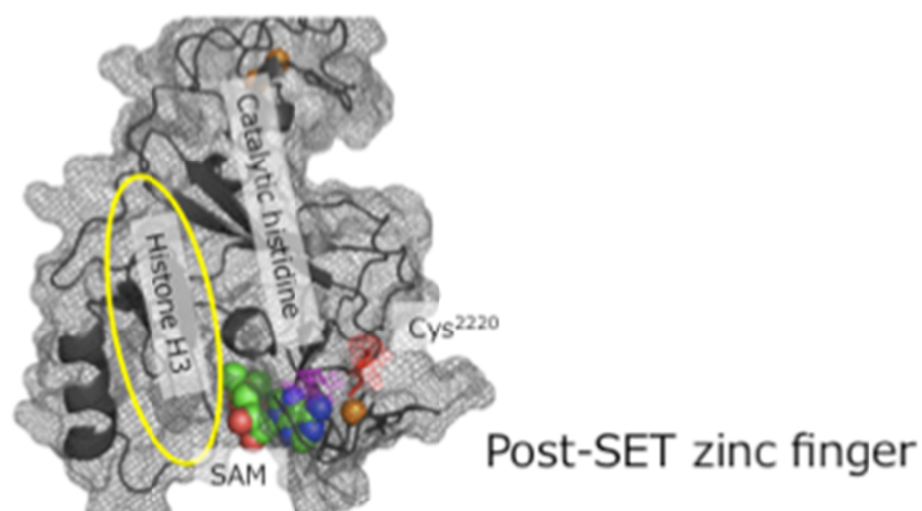


図 1 3

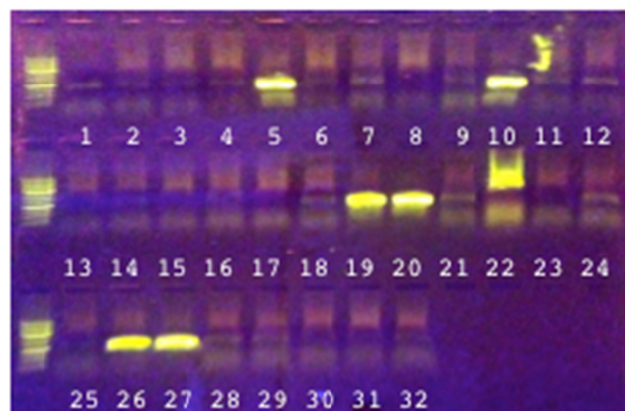


図 14

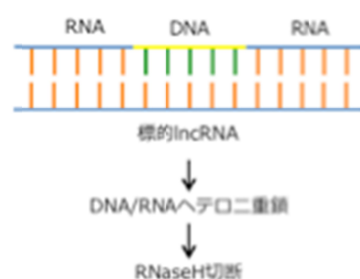


図 15

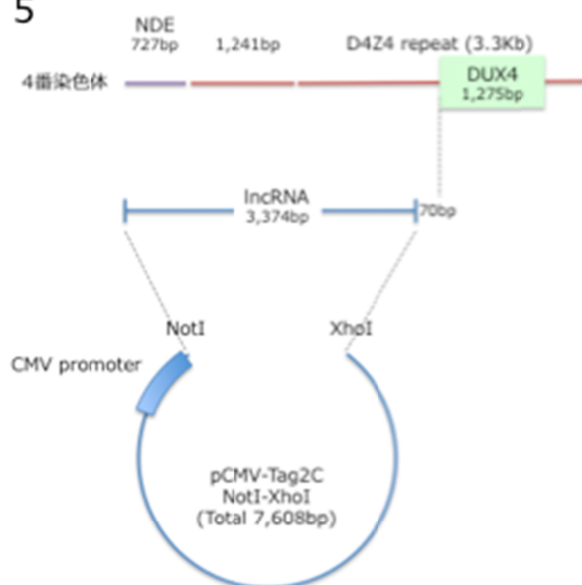


図 16

	リード数	マップされたサブリード	アラインされたサブリード	マッピングの精度	コンティグ数	最大コンティグ長	コンティグ合計長	D4Z4カバー率
P4-C2	150,292	50,281	48079	0.84	22	31375	283105	100
P5-C3	150,292	69,114	58763	0.86	32	31373	439219	100

図 17

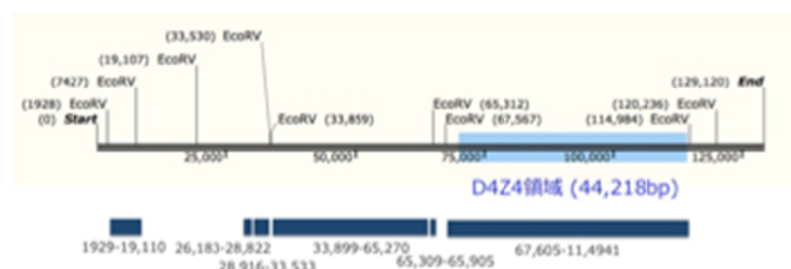


図 18

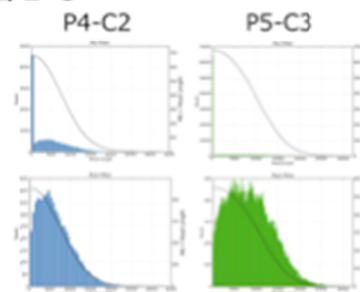


図 19

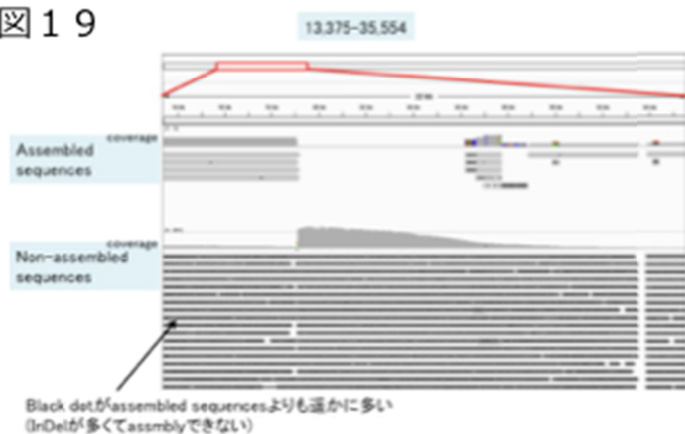


図 2 0

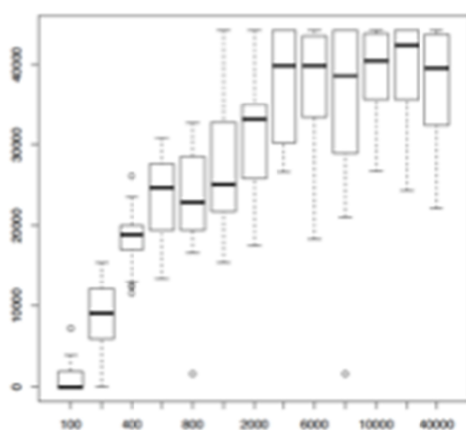


図 2 1

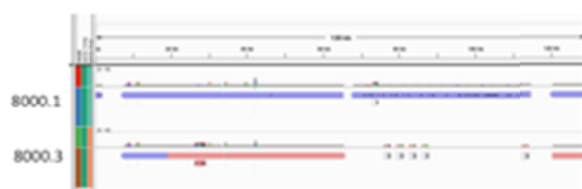


図 2 2

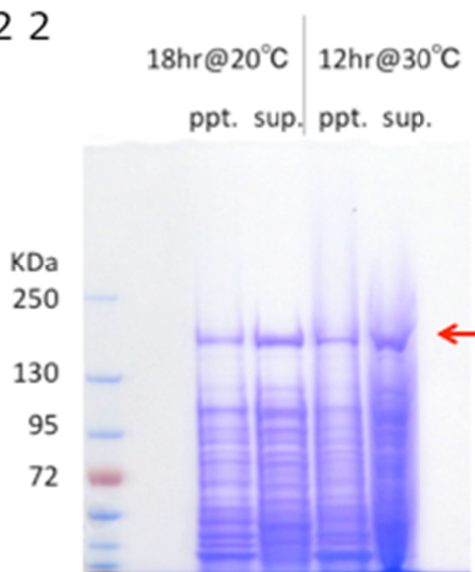


図 2 3

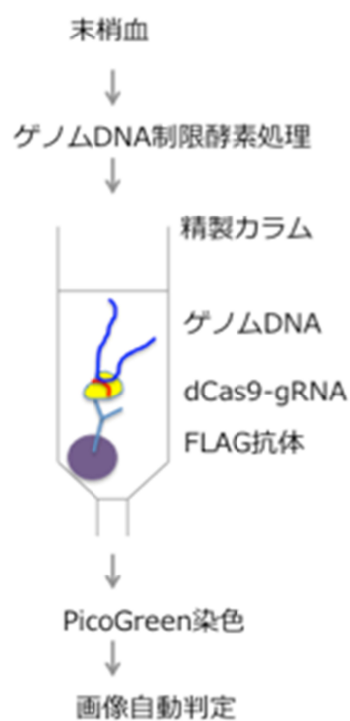


図 2 4

