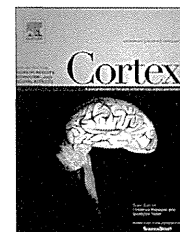


- 12 Sass LA, Parnas J. Schizophrenia, consciousness, and the self. *Schizophr Bull* 2003; **29**: 427–444.
- 13 Bearden CE, Rosso IM, Hollister JM, Sanchez LE, Hadley T, Cannon TD. A prospective cohort study of childhood behavioral deviance and language abnormalities as predictors of adult schizophrenia. *Schizophr Bull* 2000; **26**: 395–410.
- 14 Hulshoff Pol HE, Schnack HG, Posthuma D, Mandl RC, Baare WF, van Oel C *et al*. Genetic contributions to human brain morphology and intelligence. *J Neurosci* 2006; **26**: 10235–10242.
- 15 Bis JC, DeCarli C, Smith AV, van der Lijn F, Crivello F, Fornage M *et al*. Common variants at 12q14 and 12q24 are associated with hippocampal volume. *Nat Genet* 2012; **44**: 545–551.
- 16 Stein JL, Medland SE, Vasquez AA, Hibar DP, Senstad RE, Winkler AM *et al*. Identification of common variants associated with human hippocampal and intracranial volumes. *Nat Genet* 2012; **44**: 552–561.
- 17 Hashimoto R, Ohi K, Yasuda Y, Fukumoto M, Yamamori H, Kamino K *et al*. The KCNH2 gene is associated with neurocognition and the risk of schizophrenia. *World J Biol Psychiatry* 2013; **14**: 114–120.
- 18 Ohi K, Hashimoto R, Yasuda Y, Nemoto K, Ohnishi T, Fukumoto M *et al*. Impact of the genome wide supported NRG1 gene on anterior cingulate morphology in schizophrenia. *PLoS One* 2012; **7**: e29780.
- 19 Hashimoto R, Ohi K, Yasuda Y, Fukumoto M, Yamamori H, Takahashi H *et al*. Variants of the RELA gene are associated with schizophrenia and their startle responses. *Neuropsychopharmacology* 2011; **36**: 1921–1931.
- 20 Hashimoto R, Ohi K, Yasuda Y, Fukumoto M, Iwase M, Iike N *et al*. The impact of a genome-wide supported psychosis variant in the ZNF804A gene on memory function in schizophrenia. *Am J Med Genet B Neuropsychiatr Genet* 2010; **153B**: 1459–1464.
- 21 Ohi K, Hashimoto R, Yasuda Y, Fukumoto M, Nemoto K, Ohnishi T *et al*. The AKT1 gene is associated with attention and brain morphology in schizophrenia. *World J Biol Psychiatry* 2013; **14**: 100–113.
- 22 Evans W. An encephalographic ratio for estimating ventricular enlargement and cerebral atrophy. *Arch Neurol Psychiatry* 1942; **47**: 931–937.
- 23 Wilke M, Holland SK, Altaye M, Gaser C. Template-O-Matic: a toolbox for creating customized pediatric templates. *Neuroimage* 2008; **41**: 903–913.
- 24 Ashburner J. A fast diffeomorphic image registration algorithm. *Neuroimage* 2007; **38**: 95–113.
- 25 Ohi K, Hashimoto R, Yamamori H, Yasuda Y, Fujimoto M, Umeda-Yano S *et al*. The impact of the genome-wide supported variant in the cyclin M2 gene on gray matter morphology in schizophrenia. *Behav Brain Funct* 2013; **9**: 40.
- 26 Good CD, Johnsrude IS, Ashburner J, Henson RN, Friston KJ, Frackowiak RS. A voxel-based morphometric study of ageing in 465 normal adult human brains. *Neuroimage* 2001; **14**: 21–36.
- 27 Hammers A, Allom R, Koepp MJ, Free SL, Myers R, Lemieux L *et al*. Three-dimensional maximum probability atlas of the human brain, with particular reference to the temporal lobe. *Hum Brain Mapp* 2003; **19**: 224–247.
- 28 Heckemann RA, Hajnal JV, Aljabar P, Rueckert D, Hammers A. Automatic anatomical brain MRI segmentation combining label propagation and decision fusion. *Neuroimage* 2006; **33**: 115–126.
- 29 Price AL, Patterson NJ, Plenge RM, Weinblatt ME, Shadick NA, Reich D. Principal components analysis corrects for stratification in genome-wide association studies. *Nat Genet* 2006; **38**: 904–909.
- 30 Hong KS, Won HH, Cho EY, Jeun HO, Cho SS, Lee YS *et al*. Genome-wide significant evidence of linkage of schizophrenia to chromosomes 2p24.3 and 6q27 in an SNP-Based analysis of Korean families. *Am J Med Genet B Neuropsychiatr Genet* 2009; **150B**: 647–652.
- 31 Ribolsi M, Koch G, Magni V, Di Lorenzo G, Rubino IA, Siracusano A *et al*. Abnormal brain lateralization and connectivity in schizophrenia. *Rev Neurosci* 2009; **20**: 61–70.



This work is licensed under a Creative Commons Attribution-NonCommercial-NoDerivs 3.0 Unported License. The images or other third party material in this article are included in the article's Creative Commons license, unless indicated otherwise in the credit line; if the material is not included under the Creative Commons license, users will need to obtain permission from the license holder to reproduce the material. To view a copy of this license, visit <http://creativecommons.org/licenses/by-nc-nd/3.0/>

Supplementary Information accompanies the paper on the Translational Psychiatry website (<http://www.nature.com/tp>)



Letter to the editor

Genetic risk variants of schizophrenia associated with left superior temporal gyrus volume



Kazutaka Ohi ^{a,b}, Ryota Hashimoto ^{a,c,*}, Masashi Ikeda ^d,
 Fumio Yamashita ^e, Masaki Fukunaga ^f, Kiyotaka Nemoto ^g,
 Takashi Ohnishi ^{h,i}, Hidenaga Yamamori ^{a,j}, Yuka Yasuda ^a,
 Michiko Fujimoto ^a, Satomi Umeda-Yano ^j, Yoshiyuki Watanabe ^k,
 Nakao Iwata ^d, Daniel R. Weinberger ^l and Masatoshi Takeda ^{a,c}

^a Department of Psychiatry, Osaka University Graduate School of Medicine, Osaka, Japan

^b National Hospital Organization, Yamato Mental-Medical Center, Nara, Japan

^c Molecular Research Center for Children's Mental Development, United Graduate School of Child Development, Osaka University, Osaka, Japan

^d Department of Psychiatry, Fujita Health University School of Medicine, Aichi, Japan

^e Division of Ultrahigh Field MRI, Institute for Biomedical Sciences, Iwate Medical University, Iwate, Japan

^f Biofunctional Imaging, Immunology Frontier Research Center, Osaka University, Osaka, Japan

^g Department of Neuropsychiatry, Institute of Clinical Medicine, University of Tsukuba, Ibaraki, Japan

^h Department of Psychosomatic Research, National Institute of Mental Health, National Center of Neurology and Psychiatry, Tokyo, Japan

ⁱ CNS Science Department, Scientific Affairs Division, Janssen Pharmaceutical K.K., Tokyo, Japan

^j Department of Molecular Neuropsychiatry, Osaka University Graduate School of Medicine, Osaka, Japan

^k Department of Radiology, Osaka University Graduate School of Medicine, Osaka, Japan

^l Lieber Institute for Brain Development, Johns Hopkins University Medical Campus, Baltimore, MD, USA

ARTICLE INFO

Article history:

Received 11 January 2014

Revised 4 April 2014

Accepted 21 May 2014

Published online 4 June 2014

Schizophrenia is a common and complex psychiatric disease with a high estimated heritability of approximately 80% (Sullivan, Kendler, & Neale, 2003), and hundreds of common single-nucleotide polymorphisms (SNPs) are weakly implicated in the pathogenesis of schizophrenia (Purcell et al.,

2009). Gray matter volume (GM) in brain also has an estimated heritability of approximately 60–90% in healthy subjects (Thompson et al., 2001) and reduced GM volumes in patients with schizophrenia have been frequently reported (Chan, Di, McAlonan, & Gong, 2011). A single polygenic

* Corresponding author. Molecular Research Center for Children's Mental Development, United Graduate School of Child Development, Osaka University, D3, 2-2, Yamadaoka, Suita, Osaka, 565-0871, Japan.

E-mail address: hashimor@psy.med.osaka-u.ac.jp (R. Hashimoto).

<http://dx.doi.org/10.1016/j.cortex.2014.05.011>

0010-9452/© 2014 The Authors. Published by Elsevier Ltd. This is an open access article under the CC BY-NC-ND license (<http://creativecommons.org/licenses/by-nc-nd/3.0/>).

schizophrenia score (PSS), which was calculated by combining the additive effects of thousands of common independent SNPs weakly associated with schizophrenia explained approximately 3% of the variance in liability for schizophrenia in independent subjects (Purcell et al., 2009). A recent study found that PSS predicts the total brain (TB) and white matter volumes (WM) but not the GM, explaining approximately 5% of the variance in the TB and WM (Terwisscha van Scheltinga et al., 2013). However, it remains unclear whether PSS affects variation in specific GM. Therefore, we investigated the effect of PSS on GM, using (i) voxel-based morphometry (VBM) and (ii) VBM-based region of interest (ROI) methods.

For PSS, the odds ratios for genome-wide SNP data were calculated in a discovery Japanese genome-wide association study (JPN_GWAS) sample including 560 patients with schizophrenia and 548 healthy subjects (Ikeda et al., 2011). On the basis of the genomic-control adjusted p -values in an allele-wise association analysis from the discovery sample, nominally associated alleles at the following liberal significance threshold (P_T) were selected: $P_T \leq .1$, $P_T \leq .2$, $P_T \leq .3$, $P_T \leq .4$, and $P_T \leq .5$. Of 67,315 independent SNPs remained after pruning, the numbers of SNPs at each P_T are as follows; $P_T \leq .1$ ($n = 7,332$), $P_T \leq .2$ ($n = 14,294$), $P_T \leq .3$ ($n = 21,205$), $P_T \leq .4$ ($n = 27,921$), and $P_T \leq .5$ ($n = 34,523$). These data were used to calculate individual PSSs in our target sample of 160 patients with schizophrenia and 378 healthy subjects. The structural images in the target sample were acquired using a 1.5T GE Magnetic Resonance Imaging (MRI) scanner, and the MRI images were processed using the VBM8 toolbox in Statistical

Parametric Mapping 8 (SPM8). Detailed information regarding the subjects and methods is provided in the Supplementary Materials and Methods and Table S1. Written informed consent was obtained from all subjects after the procedures had been fully explained. This study was performed in accordance with the World Medical Association's Declaration of Helsinki and was approved by the Research Ethical Committee of Osaka University.

First, to identify brain regions related to PSS based on each threshold, we conducted a whole-brain search in patients with schizophrenia and healthy subjects using a multiple regression model in SPM8. Age, gender and diagnosis were included as covariates. As we found a marginal interaction between diagnosis and PSS on the left superior temporal gyrus (STG), an area of the brain reported to have reduced GM in high-risk individuals and first-episode and chronic schizophrenia patients (Chan et al., 2011) (a maximum of $T = 4.44$ and $P_{FWE} = .075$ at $P_T \leq .5$) (Fig. S1), we next performed separate whole-brain searches to examine the effects of PSS in patients with schizophrenia and healthy subjects. In the patients, PSS was significantly negatively correlated with the local GM in the left STG at the different P_T -values at the whole-brain corrected level ($P_{FWE} < .05$, a maximum of $T = 5.04$ and $P_{FWE} = .012$ at $P_T \leq .3$) (Fig. 1). Higher PSSs were associated with smaller left STG volumes. The STG was the only region showing the association. Such effects were similarly found at the $P_T \leq .2$ ($T = 4.75$, $P_{FWE} = .037$) to $P_T \leq .5$ ($T = 4.73$, $P_{FWE} = .040$) threshold levels, indicating that many more SNPs based on threshold levels more lenient than $P_T \leq .2$ are predictive of

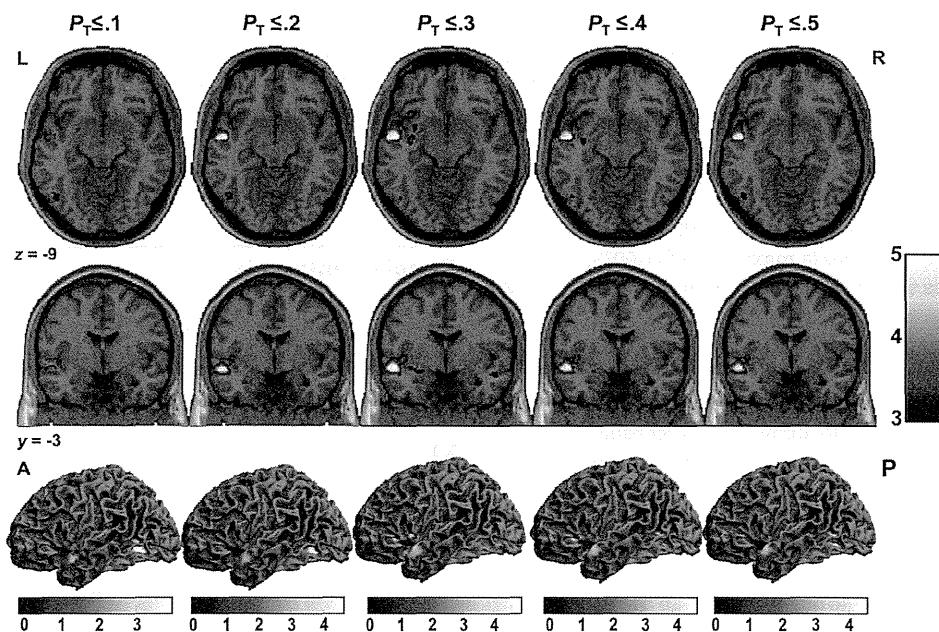


Fig. 1 – Impacts of polygenic scores on gray matter volume in patients with schizophrenia. The effects of PSS based on each threshold ($P_T \leq .1$, $P_T \leq .2$, $P_T \leq .3$, $P_T \leq .4$, and $P_T \leq .5$) on the gray matter volume are shown according to the t values showed by the colored bars. The most significant region of PSS association was in the left superior temporal gyrus (Talairach coordinates of peak voxel: $-50, -3, -9$). The anatomical localizations are displayed on the axial (upper line) and coronal (middle line) sections of a normal MRI spatially normalized to the Montreal Neurological Institute template. Z and y represent the z and y coordinates in Talairach space. The surface-rendered view (lower line) of the brain region correlating with PSS is shown. L, left; R, right; A, anterior; P, posterior.

reduced STG volumes. When including the number of non-missing SNPs, PANSS scores, duration of illness, or antipsychotic dosage as covariates in the VBM analysis, the effects of PSS on the region remained significant ($P_{FWE} < .05$). In contrast, there was no effect of the score on the GM in healthy subjects ($P_{FWE} > .05$).

The STG is involved in auditory processing, the perception of emotions in facial stimuli, and social cognition (Bigler et al., 2007; Radua et al., 2010). To confirm whether the effect at voxel level on the initial VBM analyses is accepted in the larger structural and functional region, we secondly investigated the effects of PSS on calculated total left STG volumes in patients with schizophrenia and healthy subjects using a multiple linear regression model, with the number of nonmissing SNPs as a covariate using PASW18.0 software. Consistent with the VBM results and expected from them, the ROI analysis revealed that the PSS were significantly negatively correlated with the total left STG volume at all different P_T -values (a maximum $R^2 = .032$, $p = .0090$, at $P_T \leq .2$) in the patients (Fig. S2), whereas there was no effect of the score on the region in the controls ($p > .13$). The PSS explained approximately 3.2% of the variance in the total left STG in the patients with schizophrenia, and the effects of PSS on the region reached a peak at $P_T \leq .3$ in the VBM and $P_T \leq .2$ in the ROI analyses. To examine whether there is a strong association of SNPs with the total left STG, we subsequently conducted a GWAS of the region in the same target samples of patients with schizophrenia. We did not observe any association at a widely used benchmark for genome-wide significance ($p > 5.0 \times 10^{-8}$, Figs. S3–S4 and Table S2).

Although Ikeda et al. (2011) reported that there was a significant correlation of the PSSs between the Japanese and UK samples, there are likely many unique risk variants included in the PSS derived in the Japanese dataset. As the genes comprising the PSS in this study are not identical to those in the MRI study of Terwisscha van Scheltinga et al. (2013), we additionally attempted to replicate the association between PSS and TB and WM (Fig. S5). The PSS were marginally negatively correlated with the TB at the $P_T \leq .5$ ($R^2 = .0035$, $p = .049$) and GM at different P_T -values (a maximum $R^2 = .0073$, $p = .015$, at $P_T \leq .5$), whereas there was no effect of the score on the WM ($p > .05$). The reason why we failed to replicate the associations may be caused by false-negative results due to a small number of discovery samples and/or difference of ethnicities between present and previous studies. We used liberal thresholds ($P_T = .1$ to $.5$) to obtain PSS according to prior studies (Ikeda et al., 2011; Purcell et al., 2009). However, it was more liberal compared to previous study of Terwisscha van Scheltinga et al. (2013) ($P_T = .002$ to $.4$). The thresholds we used were so liberal as to likely include a large number of false positives.

Substantially larger controls participated in this study. However, there was a lack of the association in the group. As demographic variables in our samples did not match between healthy subjects and patients with schizophrenia, we matched controls to patients for age and sex and additionally performed the VBM analysis, by removing healthy subjects from the total samples. However, the lack of association in the control group did not change. We considered two reasons for the lack of association; 1) The PSS may be related to a genetic

architecture of patients with schizophrenia but not controls because the PSS were scores derived from risk of schizophrenia. 2) The association that we detected in patients may result from a false-positive finding due to small samples.

Our findings suggest that a set of SNPs weakly associated with schizophrenia may have an accumulative effect on the brain structure of patients, but not controls. However, our findings should be carefully interpreted because there has not been enough evidence for the heritability of brain structures in unaffected siblings (Birnbaum & Weinberger, 2013). It is interesting to note that the STG is the only brain region showing significant association with the PSS in our schizophrenia dataset, even though structural imaging studies of patients with schizophrenia have identified other brain regions that show volume differences between patients and controls, and that no associations were found in normal subjects, a considerably larger sample. This selective association with the STG and only in the patients was not expected and must be viewed as preliminary pending further replication.

Acknowledgments

The authors report no conflict of interest. We would like to thank all the individuals who participated in this study. This work was supported by research grants from the Japanese Ministry of Health, Labor and Welfare (H22-seishin-ippan-001), KAKENHI, 22390225-Grant-in-Aid for Scientific Research (B), 23659565-Grant-in-Aid for Challenging Exploratory Research and Grant-in-Aid for Scientific Research on Innovative Areas (Comprehensive Brain Science Network) from the Japanese Ministry of Education, Culture, Sports, Science and Technology (MEXT), and the Japan Foundation for Neuroscience and Mental Health. The authors declare no competing financial interests.

Supplementary data

Supplementary data related to this article can be found at <http://dx.doi.org/10.1016/j.cortex.2014.05.011>.

REFERENCES

- Bigler, E. D., Mortensen, S., Neeley, E. S., Ozonoff, S., Krasny, L., Johnson, M., et al. (2007). Superior temporal gyrus, language function, and autism. *Developmental Neuropsychology*, 31, 217–238.
- Birnbaum, R., & Weinberger, D. R. (2013). Functional neuroimaging and schizophrenia: a view towards effective connectivity modeling and polygenic risk. *Dialogues in Clinical Neuroscience*, 15, 279–289.
- Chan, R. C., Di, X., McAlonan, G. M., & Gong, Q. Y. (2011). Brain anatomical abnormalities in high-risk individuals, first-episode, and chronic schizophrenia: an activation likelihood estimation meta-analysis of illness progression. *Schizophrenia Bulletin*, 37, 177–188.

- Ikeda, M., Aleksic, B., Kinoshita, Y., Okochi, T., Kawashima, K., Kushima, I., et al. (2011). Genome-wide association study of schizophrenia in a Japanese population. *Biological Psychiatry*, 69, 472–478.
- Purcell, S. M., Wray, N. R., Stone, J. L., Visscher, P. M., O'Donovan, M. C., Sullivan, P. F., et al. (2009). Common polygenic variation contributes to risk of schizophrenia and bipolar disorder. *Nature*, 460, 748–752.
- Radua, J., Phillips, M. L., Russell, T., Lawrence, N., Marshall, N., Kalidindi, S., et al. (2010). Neural response to specific components of fearful faces in healthy and schizophrenic adults. *NeuroImage*, 49, 939–946.
- Sullivan, P. F., Kendler, K. S., & Neale, M. C. (2003). Schizophrenia as a complex trait: evidence from a meta-analysis of twin studies. *Archives of General Psychiatry*, 60, 1187–1192.
- Terwisscha van Scheltinga, A. F., Bakker, S. C., van Haren, N. E., Derks, E. M., Buizer-Voskamp, J. E., Boos, H. B., et al. (2013). Genetic schizophrenia risk variants jointly modulate total brain and white matter volume. *Biological Psychiatry*, 73, 525–531.
- Thompson, P. M., Cannon, T. D., Narr, K. L., van Erp, T., Poutanen, V. P., Huttunen, M., et al. (2001). Genetic influences on brain structure. *Nature Neuroscience*, 4, 1253–1258.

