

- injury: a multicenter trial. *Arch Phys Med Rehabil* 2005;86:672–80.
- [11] Hornby TG, Zemon DH, Campbell D. Robotic assisted, body-weight-supported treadmill training in individuals following motor incomplete spinal cord injury. *Phys Ther* 2005;85:52–66.
- [12] Hornby TG, Campbell DD, Zemon DH, Kahn JH. Clinical and quantitative evaluation of robotic-assisted treadmill walking to retrain ambulation following spinal cord injury. *Top Spinal Cord Inj Rehabil* 2005;11:1–17.
- [13] Nooijen CF, Ter Hoeve N, Field-Fote EC. Gait quality is improved by locomotor training in individuals with SCI regardless of training approach. *J Neuroeng Rehabil* 2009;6:36–46.
- [14] Schwartz I, Sajina A, Neeb M, et al. Locomotor training using a robotic device in patients with subacute spinal cord injury. *Spinal Cord* 2011;49:1062–7.
- [15] Kawamoto H, Sankai Y. Power assist system HAL-3 for gait disorder person. *Proceedings of ICCHP international conference on computers helping people with special needs*. 2002; 196–203.
- [16] Suzuki K, Mito G, Kawamoto H, et al. Intention-based walking support for paraplegia patients with robot suit hal. *Advanced Robotics* 2007;21:383–408.
- [17] Yamawaki K, Kawamoto H, Eguchi K, et al. Gait training for a spinal canal stenosis patient using robot suit HAL: a case report-. *Proceedings of the 6th World Congress of the International Society of Physical and Rehabilitation Medicine*, 2011; 66–68.
- [18] Kawamoto H, Kiyotaka K, Yoshio N, et al. Pilot study of locomotion improvement using hybrid assistive limb in chronic stroke patients. *BMC Neurol* 2013;13:141.
- [19] Van Hedel HJ, Wirz M, Curt A. Improving walking assessment in subjects with an incomplete spinal cord injury: responsiveness. *Spinal Cord* 2006;44:352–6.
- [20] Van Hedel HJ, Wirz M, Dietz V. Assessing walking ability in subjects with spinal cord injury: validity and reliability of 3 walking tests. *Arch Phys Med Rehabil* 2005;86:190–6.
- [21] Harada ND, Chiu V, Stewart AL. Mobility-related function in older adults: assessment with a 6-minute walk test. *Arch Phys Med Rehabil* 1999;80:837–84.
- [22] Ditunno JF, Ditunno PL. Walking index for spinal cord injury (WISCI II): scale revision. *Spinal Cord* 2001;39:654–6.
- [23] Myeong OK, Burns AS, Ditunno JF, Marino RJ. The assessment of walking capacity using the walking index for spinal cord injury: self-selected versus maximal levels. *Arch Phys Med Rehabil* 2007;88:762–7.
- [24] Nascimento LR, Caetan LC, Freitas DC, et al. Different instructions during the ten-meter walking test determined significant increases in maximum gait speed in individuals with chronic hemiparesis. *Rev Bras Fisioter* 2012;16:122–7.
- [25] Mehrholz J, Kugler J, Pohl M. Locomotor training for walking after spinal cord injury. *Cochrane Database Syst Rev* 2012;11.
- [26] Morawietz C, Moffat F. Effects of locomotor training after incomplete spinal cord injury: a systematic review. *Arch Phys Med Rehabil* 2013;94:2297–308.

Neuroimmunological aspects of human T cell leukemia virus type 1-associated myelopathy/tropical spastic paraparesis

Mineki Saito

Received: 19 April 2013 / Revised: 9 July 2013 / Accepted: 22 July 2013
© Journal of NeuroVirology, Inc. 2013

Abstract Human T cell leukemia virus type 1 (HTLV-1) is a human retrovirus etiologically associated with adult T cell leukemia/lymphoma and HTLV-1-associated myelopathy/tropical spastic paraparesis (HAM/TSP). Only approximately 0.25–4 % of infected individuals develop HAM/TSP; the majority of infected individuals remain lifelong asymptomatic carriers. Recent data suggest that immunological aspects of host–virus interactions might play an important role in the development and pathogenesis of HAM/TSP. This review outlines and discusses the current understanding, ongoing developments, and future perspectives of HAM/TSP research.

Keywords HTLV-1 · HAM/TSP · Host immune response

Introduction

Human T cell leukemia virus type 1 (HTLV-1) is a replication-competent human retrovirus associated with two distinct types of disease: a malignancy of mature CD4⁺ T cells called adult T cell leukemia/lymphoma (ATL) (Hinuma et al. 1981; Poesz et al. 1980; Yoshida et al. 1984) and a chronic inflammatory central nervous system disease HTLV-1-associated myelopathy/tropical spastic paraparesis (HAM/TSP) (Gessain et al. 1985; Osame et al. 1986). Like human immunodeficiency virus (HIV), HTLV-1 is never eliminated from the host despite vigorous cellular and humoral immune responses. However, in contrast to HIV infection, few with HTLV-1 develop disease; only approximately 2–3 % of infected persons develop ATL (Tajima 1990), another 0.25–4 % develop HAM/TSP (Hisada et al. 2004; Kramer et al. 1995; Nakagawa et al. 1995; Osame et al. 1990), and the majority of infected individuals remain lifelong

asymptomatic carriers (ACs). Therefore, evaluation of the individual risk of developing disease in ACs would certainly be of considerable importance, especially in HTLV-1 endemic areas.

The viral, host, and environmental risk factors as well as the host immune response against HTLV-1 infection appear to regulate the development of HTLV-1-associated diseases (Bangham and Osame 2005). In particular, a strong immune response, especially the cytotoxic T lymphocyte (CTL) response, to HTLV-1 is seen in patients with HAM/TSP and suggested to be strongly associated with the pathogenesis of HTLV-1-associated diseases (Matsuura et al. 2010; Saito et al. 2012). For more than two decades, the investigation of HTLV-1-mediated immunopathogenesis has focused on Tax, an HTLV-1-encoded viral oncoprotein, because Tax activates many cellular genes by binding to groups of transcription factors and co-activators and is necessary and sufficient for cellular transformation. However, recent reports have identified that another regulatory protein, HTLV-1 basic leucine zipper factor (HBZ), also has a critical role in the development of ATL and HAM/TSP (Matsuoka and Jeang 2011). This review summarizes past and recent studies of HAM/TSP, attempting to answer the following fundamental questions: Why do some HTLV-1-infected people develop disease whereas the vast majority remain healthy? How does HTLV-1 persist in the individual host despite a strong host immune response? How is the inflammatory lesion in HAM/TSP initiated and maintained?

History and epidemiology of HTLV-1

HTLV-1 belongs to the *Deltaretrovirus* genus of the *Orthoretrovirinae* subfamily and infects 10–20 million people worldwide (de The and Bomford 1993; Proietti et al. 2005; Uchiyama 1997). HTLV-1 can be transmitted through sexual contact (Roucoux et al. 2005), intravenous drug use (Proietti et al. 2005), and breastfeeding from mother to child (Hino

M. Saito (✉)
Department of Microbiology, Kawasaki Medical School,
577 Matsushima, Kurashiki 701-0192, Japan
e-mail: mineki@med.kawasaki-m.ac.jp

et al. 1985; Kinoshita et al. 1987). At present, the infection is endemic in southwest Japan, the Caribbean, Sub-Saharan Africa, and South America, with smaller foci in Southeast Asia, South Africa, and northeast Iran (Verdonck et al. 2007). HTLV-1 was initially isolated in 1980 from two T cell lymphoblastoid cell lines and the blood of a patient originally thought to have a cutaneous T cell lymphoma (Poesz et al. 1980). It was the first retrovirus ever associated with cancer in a human. Three years before the isolation of HTLV-1, Takatsuki et al. reported ATL, a rare form of leukemia endemic to southwest Japan, as a distinct clinical entity (Uchiyama et al. 1977). In 1981, Hinuma et al. clearly demonstrated that ATL was caused by a new human retrovirus, originally termed ATL (Hinuma et al. 1981; Miyoshi et al. 1981). Since then, ATL and HTLV have been shown to be identical, and a single name, HTLV-1, has been adopted. In the mid-1980s, epidemiological data linked HTLV-1 infection to a chronic progressive neurological disease, which was termed tropical spastic paraparesis in the Caribbean (Gessain et al. 1985) and HTLV-1-associated myelopathy in Japan (Osame et al. 1986). HTLV-1-positive TSP and HAM were subsequently found to be clinically and pathologically identical, and the disease was given a single designation as HAM/TSP (Hollberg and Hafler 1993). To date, more than 3,000 cases of HAM/TSP have been reported in HTLV-1 endemic areas. Sporadic cases have also been described in non-endemic areas such as the USA and Europe, mainly in immigrants from an HTLV-1 endemic area (Araujo and Silva 2006). HTLV-1 can cause other chronic inflammatory diseases such as uveitis (Mochizuki et al. 1992), arthropathy (Nishioka et al. 1989), pulmonary lymphocytic alveolitis (Maruyama et al. 1988; Sugimoto et al. 1989; Sugimoto et al. 1987), polymyositis (Higuchi et al. 1992; Morgan et al. 1989), Sjögren syndrome (Terada et al. 1994), and infective dermatitis (LaGrenade et al. 1990), although there is no clear evidence for an etiological role of HTLV-1 in these diseases.

Clinical and pathological features of HAM/TSP

HAM/TSP is a chronic progressive myelopathy characterized by spastic paraparesis, sphincter dysfunction, and mild sensory disturbance in the lower extremities (Nakagawa et al. 1996). The period from initial HTLV-1 infection to the onset of HAM/TSP is assumed to range from months to decades, a shorter time than that for the onset of ATL (Nakagawa et al. 1995; Olindo et al. 2006). HAM/TSP occurs both in vertically infected individuals and in those who become infected later in life, that is, through sexual contact almost exclusively from male to female, intravenous drug use, contaminated blood transfusions, etc. The mean age at onset is 43.8 years, and like autoimmune diseases, the frequency of cases of HAM/TSP is greater in women than in men (the male-to-female

ratio of occurrence is 1:2.3) (Nakagawa et al. 1995). In addition to HTLV-1 antibody (Ab) positivity both in serum and cerebrospinal fluid (CSF), the presence of atypical lymphocytes (the so-called “flower cells”) in peripheral blood and CSF, a moderate pleocytosis, and raised protein content in CSF is observed in patients with HAM/TSP (Araujo and Silva 2006). Oligoclonal immunoglobulin bands in the CSF; raised concentrations of inflammatory markers such as neopterin, tumor necrosis factor (TNF)- α , interleukin (IL)-6, and interferon (IFN)- γ ; and increased intrathecal Ab synthesis specific for HTLV-1 antigens have also been described (Jacobson 2002). Clinical progression of HAM/TSP is associated with an increase in the proviral load (PVL) in individual patients, and a high ratio of PVL in CSF cells/peripheral blood mononuclear cells (PBMCs) is also significantly associated with clinically progressive disease (Takenouchi et al. 2003). Thus, a pro-inflammatory environment associated with increased numbers of HTLV-1-infected cells is a characteristic immunological profile of HAM/TSP.

Pathological analysis of HAM/TSP autopsy materials showed the loss of myelin and axons in the lateral, anterior, and posterior columns of the spinal cord. These lesions are associated with perivascular and parenchymal lymphocytic infiltration with the presence of foamy macrophages, reactive astrocytosis, and fibrillary gliosis, predominantly at the thoracic level (Iwasaki 1990; Izumo et al. 2000; Yoshioka et al. 1993), suggesting that the immune response against HTLV-1 causes the inflammatory spinal cord damage seen in patients with HAM/TSP (Bangham 2000). In patients with active chronic lesions in the spinal cord, perivascular inflammatory infiltration with similar composition of cell subsets was also seen in the brain (Aye et al. 2000). The peripheral nerve pathology of patients with HAM/TSP with sensory disturbance showed varying degrees of demyelination, remyelination, axonal degeneration, regeneration, and perineural fibrosis (Bhigjee et al. 1993; Kiwaki et al. 2003).

Treatment of HAM/TSP

To date, no generally agreed standard treatment regimen has been established for HAM/TSP, and no treatment has proven to be consistently effective on a long-term basis. Therefore, clinical practice for treatment of patients with HAM/TSP is based on case series and open, nonrandomized, uncontrolled studies. Mild to moderate beneficial effects have been reported for a number of agents in open-label studies including corticosteroids (Nakagawa et al. 1996), danazol (Harrington et al. 1991), pentoxifylline (Shirabe et al. 1997), immunosuppressants such as ciclosporin A (Martin et al. 2012), high-dose intravenous gamma globulin (Kuroda et al. 1991), plasmapheresis (Matsuo et al. 1988), antibiotics (erythromycin and fosfomycin), and vitamin C (Nakagawa et al. 1996). It should be noteworthy that oral prednisolone was effective in 81.7 %

of 131 patients in a large-scale case series study (Nakagawa et al. 1996). However, the complications of corticosteroids limit their use, particularly in post-menopausal women, who are at higher risk for developing HAM/TSP. Multicenter double-blind randomized placebo-controlled trials for the IFN- α treatment indicate that IFN- α is an effective therapy with an acceptable side effects profile (Izumo et al. 1996), although the benefit of long-term IFN- α therapy has not been well studied. In regard to oral antiviral drugs zidovudine plus lamivudine, no evidence of significant benefit yet exists from randomized placebo-controlled trials (Taylor et al. 2006). Recently, oral administration of histone deacetylase inhibitor valproic acid (VPA) has been conducted as a single-center, open-label trial (Olindo et al. 2011). Although administration of VPA induced a transient increase of HTLV-1 expression to expose virus-positive cells to the host immune response, clinical measures and PVL were stable overall. It has also been reported that the antibiotic minocycline significantly inhibited spontaneous lymphocyte proliferation and degranulation/IFN- γ expression in CD8⁺ T cells of patients with HAM/TSP, suggesting its potential for treatment (Enose-Akahata et al. 2012). Overall, more clinical trials with adequate power are needed in the future.

Risk factors for developing HAM/TSP

It is well-known that HAM/TSP occurs in only a minority of HTLV-1-infected individuals. A previous population association study in HTLV-1 endemic southwest Japan revealed that one of the major risk factors is the HTLV-1 PVL, because the PVL is significantly higher in patients with HAM/TSP than in ACs (Nagai et al. 1998). A higher PVL in patients with HAM/TSP than in ACs was also observed in other endemic areas such as the Caribbean (Manns et al. 1999), South America (Adaui et al. 2006), and the Middle East (Sabouri et al. 2005). In southwest Japan, it was suggested that genetic factors such as the human leukocyte antigen (HLA) genotype are related to the high PVL in patients with HAM/TSP and genetic relatives. Namely, possession of the HLA class I genes HLA-A*02 and Cw*08 was associated with a statistically significant reduction in both HTLV-1 PVL and the risk of HAM/TSP, whereas possession of HLA class I HLA-B*5401 and class II HLA-DRB1*0101 predispose to HAM/TSP in the same population (Jeffery et al. 2000; Jeffery et al. 1999). Because the function of class I HLA proteins is to present antigenic peptides to CTL, these results imply that individuals with HLA-A*02 or HLA-Cw*08 mount a particularly efficient CTL response against HTLV-1, which may be an important determinant of PVL and the risk of HAM/TSP. In accordance with this observation, it has been reported that CTL spontaneously kill autologous HTLV-1-infected cells *ex vivo* (Hanon et al. 2000), granzymes and perforin are more highly expressed in individuals with a low

PVL (Vine et al. 2004), and the lytic efficiency of the CD8⁺ T cell response (i.e., the fraction of autologous HTLV-1-expressing cells eliminated per CD8⁺ T cell per day) was inversely correlated with both PVL and the rate of spontaneous proviral expression (Kattan et al. 2009). Furthermore, the major histocompatibility complex (MHC) class I tetramer analysis of lymphocytes isolated from the CSF of patients with HAM/TSP showed even higher frequencies of HTLV-1 Tax11-19-specific, HLA-A*02-restricted CD8⁺ lymphocytes compared with PBMCs (Nagai et al. 2001b). These findings indicate that an increased proliferation or migration of HTLV-1-infected and/or HTLV-1-specific lymphocytes to the central nervous system might be closely associated with the pathogenesis of HAM/TSP (Hayashi et al. 2008a), and the CTLs against HTLV-1 reduce both PVL and the risk of HAM/TSP. Recently, using a combination of computational and experimental approaches, MacNamara et al. reported that a CTL response against HBZ restricted by protective HLA alleles such as HLA-A*02 or Cw*08, but not a response to the immunodominant protein Tax, also determines the outcome of HTLV-1 infection (Macnamara et al. 2010).

Meanwhile, analysis of non-HLA host genetic factors by candidate gene approaches revealed that non-HLA gene polymorphisms also affect the risk of developing HAM/TSP. Namely, the TNF- α promoter -863 A allele (Vine et al. 2002) and the longer CA repeat alleles of matrix metalloproteinase 9 promoter (Kodama et al. 2004) predisposed to HAM/TSP, whereas IL-10 -592 A (Sabouri et al. 2004), stromal-derived factor 1 +801A (Vine et al. 2002), and IL-15 +191 C alleles (Vine et al. 2002) conferred protection against HAM/TSP. The polymorphisms in the matrix metalloproteinase 9 and IL-10 promoters were each associated with differences in the HTLV-1 Tax-mediated transcriptional activity of the respective gene (Kodama et al. 2004; Sabouri et al. 2004). However, the contributions of these non-HLA genes to the pathogenesis of HAM/TSP are largely unknown and these data have not yet been reproduced in different populations. Further candidate gene studies together with genome-wide association studies in different ethnic populations in a larger sample size may provide evidence for the association of non-HLA genes with the pathogenesis of HAM/TSP.

It has been reported that the lifetime risk of developing HAM/TSP differs among ethnic groups, ranging between 0.25 and 4 %. The annual incidence of HAM/TSP is higher among Jamaican subjects than among Japanese subjects (20 versus 3 cases/100,000 population), with a two to three times greater risk for women in both populations (Hisada et al. 2004; Kramer et al. 1995; Nakagawa et al. 1995; Osame et al. 1990). Although most studies of HTLV-1 genotype have reported no association between variants of HTLV-1 and the risk of HAM/TSP, Furukawa et al. reported the association between HTLV-1 Tax gene variation and the risk of HAM/TSP (Furukawa et al. 2000). Tax subgroup A, which belongs to cosmopolitan

subtype A, was more frequently observed in patients with HAM/TSP, and this association was independent of the protective effect of HLA-A*02. Interestingly, HLA-A*02 appeared to give protection against only one of the two prevalent sequence variants of HTLV-1, Tax subgroup B, which belongs to cosmopolitan subtype B, but not against Tax subgroup A in the Japanese population (Furukawa et al. 2000). Jamaican subjects, who had a higher annual incidence of HAM/TSP, also have cosmopolitan subtype A, whereas approximately 80 % of Japanese subjects, who had a lower annual incidence of HAM/TSP, have cosmopolitan subtype B. Interestingly, HLA-A*02 did not appear to provide protection against HAM/TSP development with cosmopolitan subtype A in a population in Iran (Sabouri et al. 2005).

To test whether the genomic integration site determines the abundance and the pathogenic potential of an HTLV-1-positive T cell clone, Gillet et al. recently reported the results of high-throughput mapping and quantification of HTLV-1 proviral integration in the host genome (Gillet et al. 2011). They mapped >91,000 unique insertion sites (UISs) of the provirus in primary PBMCs from 61 HTLV-1-infected individuals and showed that a typical HTLV-1-infected host carries between 500 and 5,000 UISs in 10 µg of PBMC genomic DNA. They calculated an oligoclonality index to quantify the clonality of HTLV-1-infected cells in vivo and found that the oligoclonality index did not distinguish between ACs and patients with HAM/TSP and that there was no correlation between the oligoclonality index and HTLV-1 PVL in either ACs or patients with HAM/TSP. These results indicate that the higher PVL observed in patients with HAM/TSP was attributable to a larger number of UISs but not, as previously thought, to a difference in clonality. They also obtained evidence that the abundance of established HTLV-1 clones is determined by genomic features of the host DNA flanking the provirus. Namely, HTLV-1 clonal expansion in vivo is favored by a proviral integration site near a region of host chromatin undergoing active transcription or same-sense transcriptional orientation of the provirus. In contrast, negative selection of infected clones, probably by CTLs during chronic infection, favors establishment of proviruses integrated in transcriptionally silenced DNA, and this selection is more efficient in ACs than in HAM/TSP, indicating the selection of HTLV-1-infected T cell clones with low pathogenic potential. More recent reports indicate that circulating HTLV-1-positive cells each contain a single integrated proviral copy (Cook et al. 2012), and cells expressing HTLV-1 Tax protein (i.e., viral protein expression) were significantly more frequent in clones of low abundance in vivo, whereas certain transcription start sites immediately upstream of the viral integration site were associated with virus latency (i.e., no viral protein expression). In particular, Tax-expressing, more “pathogenic” clones were efficiently controlled by the immune response, especially CTLs, whereas non-Tax-expressing “invisible” infected clones were associated with mitotic clonal expansion in vivo (Melamed et al. 2013).

The innate immune response in HAM/TSP

Type I IFN is a key innate immune cytokine produced by cells in response to viral infection. The type I IFN response protects cells against invading viruses by inducing the expression of IFN-stimulated genes, which execute the antiviral effects of IFN (Samuel 2001). The IFN-stimulated genes then generate soluble factors including cytokines that activate adaptive immunity or directly inhibit the virus itself (Liu et al. 2011). In PBMCs of HTLV-1-infected individuals, the level of HTLV-1 messenger RNA is very low and viral protein is not detectable, but these molecules are rapidly expressed after a short time in culture in vitro (Hanon et al. 2000). However, the mechanisms of this phenomenon are largely unknown. Recently, it has been reported that HTLV-1 expression in HTLV-1-infected T cells is suppressed by stromal cells (i.e., epithelial cells and fibroblasts) in culture through type I IFNs (Kinpara et al. 2009). Namely, HTLV-1 Gag protein expression was suppressed when contacted with stromal cells and restored when separated from the stromal cells. Although neutralizing antibodies against human IFN- α/β receptor only partly abrogated this phenomenon, the results indicate that the innate immune system suppresses HTLV-1 expression in vitro and in vivo, at least through type I IFN. More recently, it has been reported that IFN-stimulated genes were overexpressed in circulating leukocytes and the expression correlated with the clinical severity of HAM/TSP (Tattermusch et al. 2012).

Previous reports indicated that patients with HAM/TSP had both a lower frequency and a lower activity of natural killer (NK) cells (especially the CD3⁺ CD16⁺ subset) than ACs, although the results were not normalized with respect to the PVL (Yu et al. 1991). Because an important mechanism of induction of NK cell-mediated killing is recognition by the NK cell of a complex of the non-polymorphic MHC molecule HLA-E bound to a peptide derived from the signal sequence of some other MHC class I molecules, the synthetic tetramers of HLA-E with the HLA-G signal sequence peptide were used to identify NK cells in patients with HAM/TSP (Saito et al. 2003). The results clearly showed a lower frequency of HLA-E tetramer-binding cells in patients with HAM/TSP than in ACs; as in the earlier studies (Yu et al. 1991), this reduction in frequency was particularly notable in the CD3⁺ cells, whereas there was no significant difference in the frequency of HLA-E tetramer-binding CD3⁻ cells between patients with HAM/TSP and ACs (Saito et al. 2003). Recent reports also suggest that the frequency of invariant natural killer T (NKT) cells in the peripheral blood of patients with HAM/TSP is significantly decreased when compared with that in healthy subjects and/or ACs (Azakami et al. 2009; Ndhlovu et al. 2009). These findings indicated that the activity of the NK or NKT cell response was associated with the presence or absence of HAM/TSP. Interestingly, a previous uncontrolled preliminary trial of viable *Lactobacillus casei* strain Shirota-containing

fermented milk in patients with HAM/TSP resulted in a significant increase in NK cell activity with improvements in clinical symptoms (Matsuzaki et al. 2005). Thus, circulating NK and NKT cells might also play an important role in the disease progression and pathogenesis of HAM/TSP.

The acquired immune response in HAM/TSP

It has been reported that patients with HAM/TSP generally have higher anti-HTLV-1 Ab titers than ACs with a similar PVL (Ishihara et al. 1994; Kira et al. 1992; Nagasato et al. 1991), suggesting the existence of an augmented humoral immune response to HTLV-1. Interestingly, although Ab responses to the immunodominant epitopes of the HTLV-1 Envelope (Env) proteins were similar in all three clinical groups of HTLV-1 infection (HAM/TSP, ATL, and ACs), reactivity to four Tax immunodominant epitopes was higher in patients with HAM/TSP (71–93 %) than in patients with ATL (4–31 %) or ACs (27–37 %) (Lal et al. 1994). A recent report indicates that the Ab response against HBZ was associated with reduced CD4+ T cell activation in patients with HAM/TSP, and HBZ-specific Ab inhibited spontaneous *in vitro* lymphocyte proliferation in the PBMCs of patients with HAM/TSP (Enose-Akahata et al. 2013). Among these anti-HTLV-1 antibodies, anti-Env Ab is particularly important because some anti-Env Abs have neutralizing activity against HTLV-1. Antisera raised against recombinant HTLV-1 Env polypeptides (Kiyokawa et al. 1984; Nakamura et al. 1987), vaccinia virus containing the HTLV-1 env gene (Hakoda et al. 1995; Shida et al. 1987), immunization with neutralizing epitope peptides (Tanaka et al. 1994), and passive transfer of human immunoglobulin G that has neutralizing activity (Murata et al. 1996; Tanaka et al. 1993) were all shown to neutralize HTLV-1 infectivity. In HTLV-1 infection, the roles of HTLV-1 neutralizing Ab *in vivo* are still largely unknown. It will be interesting to examine whether HTLV-1 neutralizing Ab titers correlate with disease status and PVL in infected individuals. Because the mutation rate of HTLV-1 provirus is significantly lower than that of HIV-1, passive immunization with human monoclonal Ab may be a beneficial and effective method to prevent HTLV-1 infection.

Antiviral CD4+ T cell responses are of central importance in driving B cell and CD8+ T cell responses *in vivo*. The most common HTLV-1 antigen recognized by CD4+ T cells is the Env protein (Goon et al. 2004b; Kitzke et al. 1998), in contrast to the immunodominance of Tax in the CD8+ T cell response (Goon et al. 2004a; Jacobson et al. 1990; Kannagi et al. 1991). At a similar PVL, patients with HAM/TSP had a significantly increased frequency of virus-specific CD4+ T cells compared with ACs (Goon et al. 2004b; Nose et al. 2007). The antiviral T-helper (Th) 1 phenotype is also dominant among HTLV-1-specific CD4+ T cells in both ACs and patients with HAM/TSP (Goon et al. 2002), and there is a higher frequency of

IFN- γ , TNF- α , and IL-2 production by CD4+ T cells in patients with HAM/TSP compared with ACs of a similar PVL (Goon et al. 2002; Goon et al. 2003). A role for CD4+ T cells in initiating and causing HAM/TSP is also consistent with the immunogenetic observations that the possession of HLA-DRB1*0101, which restricts the immunodominant epitope of HTLV-1 Env gp21, was associated with susceptibility to HAM/TSP in independent HTLV-1-infected populations in southern Japan (Jeffery et al. 1999, 2000) and northeast Iran (Sabouri et al. 2005). Accordingly, a synthetic tetramer of DRB1*0101 and the immunodominant HTLV-1 Env380-394 peptide was used to analyze Env-specific CD4+ T cells directly *ex vivo* (Nose et al. 2007). The results showed that the frequency of tetramer+ CD4+ T cells was significantly higher in patients with HAM/TSP than in ACs with a similar PVL. Furthermore, direct *ex vivo* analysis of tetramer+ CD4+ T cells from two unrelated DRB1*0101-positive patients with HAM/TSP indicated that certain T cell receptor V β s were utilized and antigen-specific amino acid motifs were identified in complementarity determining region 3 from both patients. These results suggest that the observed increase in virus-specific CD4+ T cells in patients with HAM/TSP, which may contribute to CD4+ T cell-mediated antiviral immune responses and to an increased risk of HAM/TSP, was not simply due to the rapidly growing HTLV-1-infected CD4+ T cells but was the result of *in vivo* selection by specific MHC-peptide complexes, as observed in freshly isolated HLA-A*0201/Tax11-19 tetramer+ CD8+ T cells (Saito et al. 2001) and muscle-infiltrating cells from patients with HAM/TSP and HTLV-1-infected patients with polymyositis (Saito et al. 2002).

Previous reports indicated that HTLV-1-specific CD8+ CTLs are typically abundant, chronically activated, and mainly targeted to the viral transactivator protein Tax (Bangham 2000). Further, as already mentioned, the median PVL in PBMCs of patients with HAM/TSP was more than 10 times higher than that in ACs, and a high PVL was also associated with an increased risk of progression to disease (Nagai et al. 1998). Furthermore, HLA-A*02 and HLA-Cw*08 genes were independently and significantly associated with a lower PVL and a lower risk of HAM/TSP (Jeffery et al. 2000; Jeffery et al. 1999), and CD8+ T cells efficiently kill autologous Tax-expressing lymphocytes in fresh PBMCs in HTLV-1-infected individuals (Hanon et al. 2000). These data have raised the hypothesis that the class I-restricted CD8+ CTL response plays a critical part in limiting HTLV-1 replication *in vivo* and that genetically determined differences in the efficiency of the CTL response to HTLV-1 account for the risk of developing HAM/TSP. The analysis of gene expression profiles using microarrays in circulating CD4+ and CD8+ lymphocytes indicated that granzymes and perforin are more highly expressed in individuals with a low PVL (Vine et al. 2004), suggesting that a strong CTL response is associated

with a low PVL and a low risk of HAM/TSP. In accordance with this observation, the lytic capacity of HTLV-1-specific CTLs in patients with HAM/TSP and ACs quantified by a CD107a mobilization assay showed significantly lower CD107a staining in HTLV-1-specific CTLs in patients with HAM/TSP than in ACs (Sabouri et al. 2008); this suggests that patients with HAM/TSP have a high frequency of HTLV-1-specific CD8⁺ T cells with poor lytic capacity, whereas ACs have a lower frequency of cells with high lytic capacity. Moreover, it has been reported that the high CTL avidity, which is closely associated with the lytic efficiency of CTLs, correlates with low PVL and proviral gene expression (Kattan et al. 2009), indicating that the efficient control of HTLV-1 *in vivo* depends on the quality of CTLs, which determines the position of virus–host equilibrium and also the outcome of persistent HTLV-1 infection. More recently, MacNamara et al. (Macnamara et al. 2010) showed that HLA class I alleles, which strongly bind oligopeptides from the HBZ protein, enable the host to have a more effective immune response against HTLV-1; therefore, such individuals have a lower PVL and are more likely to be asymptomatic. Another recent report showed the presence of HBZ-specific CD4⁺ and CD8⁺ cells *in vivo* in patients with HAM/TSP and in ACs and a significant association between the HBZ-specific CD8⁺ cell response and asymptomatic HTLV-1 infection (Hilburn et al. 2011). These findings provide strong evidence to support the hypothesis of the crucial role of CTLs and confirm the importance of HBZ for persistent infection. However, because the frequency of HTLV-1-specific CD8⁺ T cells was significantly elevated in patients with HAM/TSP compared with ACs (Greten et al. 1998; Nagai et al. 2001a), and these cells have the potential to produce proinflammatory cytokines (Kubota et al. 1998), there is debate on the role of HTLV-1-specific CD8⁺ T cells, namely, whether these cells contribute to the inflammatory and demyelinating processes of HAM/TSP or whether the dominant effect of such cells *in vivo* is protective against disease, although a protective role and a pathogenic role of CTLs are not mutually exclusive. Indeed, there are other examples of viral infections in which the virus-specific CTLs exert both beneficial (antiviral) and detrimental (inflammatory) effects, such as lymphocytic choriomeningitis virus infection in the mouse (Klenerman and Zinkemagel 1997). It is difficult to separate cause and effect in analyzing the association between T cell attributes and the efficiency of viral control in a persistent infection at equilibrium.

Regulatory T cells (Tregs) are important mediators of peripheral immune tolerance and play an important role in chronic viral infections. HTLV-1 preferentially and persistently infects CD4⁺ CD25⁺ lymphocytes *in vivo* (Yamano et al. 2005), which contain the majority of the Foxp3⁺ Tregs (Sakaguchi et al. 2006). In patients with HAM/TSP, the percentage of Foxp3⁺ Tregs in CD4⁺ CD25⁺ cells is lower than that in ACs and uninfected healthy controls (Oh et al. 2006; Yamano et al. 2005), whereas the percentage of Foxp3⁺ cells in the CD4⁺

population tends to be higher in patients with HAM/TSP than in ACs (Best et al. 2009; Hayashi et al. 2008b; Toulza et al. 2008). Because CD25 is induced by HTLV-1 Tax oncoprotein (Inoue et al. 1986), the proportion of Foxp3⁺ cells falls in the CD4⁺ CD25⁺ population, which contains both Tregs and activated non-Tregs, in HTLV-1-infected individuals, especially patients with HAM/TSP. Therefore, it is inappropriate to use CD25 as a marker of Tregs in HTLV-1 infection, and the best current working definition of Treg phenotype is CD4⁺ Foxp3⁺. The high frequency of CD4⁺ Foxp3⁺ T cells in HTLV-1-infected individuals is maintained by CCL22 produced by HTLV-1-infected PBMCs (Toulza et al. 2010). The frequency of HTLV-1-negative Foxp3⁺ CD4⁺ cells positively correlated with the HTLV-1 PVL (Hayashi et al. 2008a; Toulza et al. 2008), and the CTL activity negatively correlated with the frequency of HTLV-1-negative Foxp3⁺ CD4⁺ cells (Toulza et al. 2008). These results suggest that an increase in HTLV-1-negative Foxp3⁺ CD4⁺ Tregs is one of the chief determinants of the efficiency of T cell-mediated immune control of HTLV-1. If such Tregs reduce CTL activity, which in turn increases the HTLV-1 PVL, this activity increases the risk of developing HAM/TSP.

Dendritic cells and the other reservoirs of HTLV-1

Dendritic cells (DCs) are antigen-presenting cells that play a critical role in the regulation of the adaptive immune response. In HTLV-1 infection, it has been shown that the DCs from patients with HAM/TSP were infected with HTLV-1 (Macatonia et al. 1992), and the development of HAM/TSP is associated with rapid maturation of DCs (Ali et al. 1993). *In vitro* culture of lymphocytes from HTLV-1-infected individuals results in “spontaneous lymphocyte proliferation” (SLP), which is the *in vitro* proliferation of PBMCs without any exogenous stimuli such as antigen or mitogen. In patients with HAM/TSP, the levels of SLP reflect the severity of the disease (Ijichi et al. 1989; Itoyama et al. 1988). Interestingly, depletion of DCs from the PBMCs of patients with HAM/TSP abolished SLP, whereas supplementing DCs restores proliferation (Macatonia et al. 1992); supplementing B cells or macrophages had no effect. A DC-dependent mechanism of SLP was further supported by data showing that antibodies to MHC class II, CD86, and CD58 can block SLP (Makino et al. 1999). Recently, Jones et al. demonstrated that human-derived myeloid and plasmacytoid DCs are susceptible to infection with cell-free HTLV-1 and that HTLV-1-infected DCs can rapidly transfer virus to autologous primary CD4⁺ T cells (Jones et al. 2008). Furthermore, it was recently demonstrated that transmission of HTLV-1 from DCs to T cells was mediated primarily by DC-SIGN (Jain et al. 2009), and the DCs are the major cell type responsible for the generation and maintenance of Tax-specific CD8⁺ T cells both *in vitro* and *in vivo* (Manuel et al. 2009).

These findings suggest that the interaction of DCs with HTLV-1 is also crucial for the pathogenesis of HAM/TSP. Moreover, using transgenic mouse models that permit conditional transient depletion of CD11c⁺ DCs, and a chimeric HTLV-1 that carries the envelope gene from Moloney murine leukemia virus, Rahman et al. demonstrated the critical role of DCs in their ability to mount both innate and adaptive immune responses during early cell-free HTLV-1 infection (Rahman et al. 2011, 2010). Because HTLV-1 can impair the differentiation of monocytes into DCs (Nascimento et al. 2011), the interaction of DCs with HTLV-1 plays a central part in the persistence and pathogenesis of HTLV-1.

Conclusions

During the three decades since the discovery of HTLV-1, advances in research have successfully helped us to understand the clinical features of HTLV-1-associated diseases and the virological properties of HTLV-1, although the precise mechanism of disease pathophysiology is still incompletely understood and treatment is still unsatisfactory. Accumulating evidence suggests that the virus–host immunological interactions play a pivotal role in the pathogenesis of HAM/TSP. A genetically determined, less efficient CTL response against HTLV-1 may cause higher PVL and antigen expression in infected individuals, which lead to the activation and expansion of antigen-specific T cell responses, subsequent induction of large amounts of proinflammatory cytokines and chemokines, and progression of the development of HAM/TSP. Future studies should be conducted to identify the precise mechanism of disease development to allow effective treatment and prevention of disease. This will require the development of a humanized small animal model that could be exploited as a tool for screening and evaluation of HTLV-1-associated diseases.

Acknowledgment The author thanks the Ministry of Health, Labor and Welfare, Japan (Health Labour Sciences Research Grant on Intractable Disease, ref H22-013 and H23-126) and the Japan Society for the Promotion of Science (JSPS) (Grant-in-Aid for Scientific Research, ref 21590512 and 24590556), and the Novartis Foundation (Japan) for the Promotion of Science for financial supports.

References

Adaui V, Verdonck K, Best I, Gonzalez E, Tipismana M, Arevalo J, Vanham G, Campos M, Zimic M, Gotuzzo E (2006) SYBR Green-based quantitation of human T-lymphotropic virus type 1 proviral load in Peruvian patients with neurological disease and asymptomatic carriers: influence of clinical status, sex, and familial relatedness. *J Neurovirol* 12:456–465

Ali A, Patterson S, Cruickshank K, Rudge P, Dalgleish AG, Knight SC (1993) Dendritic cells infected in vitro with human T cell leukaemia/

lymphoma virus type-1 (HTLV-1); enhanced lymphocytic proliferation and tropical spastic paraparesis. *Clin Exp Immunol* 94:32–37

Araujo AQ, Silva MT (2006) The HTLV-1 neurological complex. *Lancet Neurol* 5:1068–1076

Aye MM, Matsuoka E, Moritoyo T, Umehara F, Suehara M, Hokezu Y, Yamanaka H, Isashiki Y, Osame M, Izumo S (2000) Histopathological analysis of four autopsy cases of HTLV-I-associated myelopathy/tropical spastic paraparesis: inflammatory changes occur simultaneously in the entire central nervous system. *Acta Neuropathol* 100:245–252

Azakami K, Sato T, Araya N, Utsunomiya A, Kubota R, Suzuki K, Hasegawa D, Izumi T, Fujita H, Aratani S, Fujii R, Yagishita N, Kamijuku H, Kanekura T, Seino KI, Nishioka K, Nakajima T, Yamano Y (2009) Severe loss of invariant NKT cells exhibiting anti-HTLV-1 activity in patients with HTLV-1-associated disorders. *Blood* 114(15):3208–3215. doi:10.1182/blood-2009-02-203042

Bangham CR (2000) The immune response to HTLV-I. *Curr Opin Immunol* 12:397–402

Bangham CR, Osame M (2005) Cellular immune response to HTLV-1. *Oncogene* 24:6035–6046

Best I, Lopez G, Verdonck K, Gonzalez E, Tipismana M, Gotuzzo E, Vanham G, Clark D (2009) IFN-gamma production in response to Tax 161-233, and frequency of CD4⁺ Foxp3⁺ and Lin HLA-DR^{high} CD123⁺ cells, discriminate HAM/TSP patients from asymptomatic HTLV-1-carriers in a Peruvian population. *Immunology* 128:e777–e786

Bhigjee AI, Bill PL, Wiley CA, Windsor IM, Matthias DA, Amenomori T, Wachsman W, Moorhouse D (1993) Peripheral nerve lesions in HTLV-I associated myelopathy (HAM/TSP). *Muscle Nerve* 16:21–26

Cook LB, Rowan AG, Melamed A, Taylor GP, Bangham CR (2012) HTLV-1-infected T cells contain a single integrated provirus in natural infection. *Blood* 120:3488–3490

de The G, Bomford R (1993) An HTLV-I vaccine: why, how, for whom? *AIDS Res Hum Retrovir* 9:381–386

Enose-Akahata Y, Matsuura E, Tanaka Y, Oh U, Jacobson S (2012) Minocycline modulates antigen-specific CTL activity through inactivation of mononuclear phagocytes in patients with HTLV-I associated neurologic disease. *Retrovirology* 9:16

Enose-Akahata Y, Abrams A, Massoud R, Bialuk I, Johnson KR, Green PL, Maloney EM, Jacobson S (2013) Humoral immune response to HTLV-1 basic leucine zipper factor (HBZ) in HTLV-1-infected individuals. *Retrovirology* 10:19

Furukawa Y, Yamashita M, Usuku K, Izumo S, Nakagawa M, Osame M (2000) Phylogenetic subgroups of human T cell lymphotropic virus (HTLV) type I in the tax gene and their association with different risks for HTLV-I-associated myelopathy/tropical spastic paraparesis. *J Infect Dis* 182:1343–1349

Gessain A, Barin F, Vernant JC, Gout O, Maurs L, Calender A, de The G (1985) Antibodies to human T-lymphotropic virus type-I in patients with tropical spastic paraparesis. *Lancet* 2:407–410

Gillet NA, Malani N, Melamed A, Gormley N, Carter R, Bentley D, Berry C, Bushman FD, Taylor GP, Bangham CR (2011) The host genomic environment of the provirus determines the abundance of HTLV-1-infected T-cell clones. *Blood* 117:3113–3122

Goon PK, Hanon E, Igakura T, Tanaka Y, Weber JN, Taylor GP, Bangham CR (2002) High frequencies of Th1-type CD4(+) T cells specific to HTLV-1 Env and Tax proteins in patients with HTLV-1-associated myelopathy/tropical spastic paraparesis. *Blood* 99:3335–3341

Goon PK, Igakura T, Hanon E, Mosley AJ, Asquith B, Gould KG, Taylor GP, Weber JN, Bangham CR (2003) High circulating frequencies of tumor necrosis factor alpha- and interleukin-2-secreting human T-lymphotropic virus type 1 (HTLV-1)-specific CD4⁺ T cells in patients with HTLV-1-associated neurological disease. *J Virol* 77:9716–9722

Goon PK, Biancardi A, Fast N, Igakura T, Hanon E, Mosley AJ, Asquith B, Gould KG, Marshall S, Taylor GP, Bangham CR (2004a) Human T cell lymphotropic virus (HTLV) type-1-specific CD8⁺ T cells:

- frequency and immunodominance hierarchy. *J Infect Dis* 189:2294–2298
- Goon PK, Igakura T, Hanon E, Mosley AJ, Barfield A, Barnard AL, Kaftantzi L, Tanaka Y, Taylor GP, Weber JN, Bangham CR (2004b) Human T cell lymphotropic virus type I (HTLV-I)-specific CD4+ T cells: immunodominance hierarchy and preferential infection with HTLV-I. *J Immunol* 172:1735–1743
- Greten TF, Slansky JE, Kubota R, Soldan SS, Jaffee EM, Leist TP, Pardoll DM, Jacobson S, Schneek JP (1998) Direct visualization of antigen-specific T cells: HTLV-1 Tax11-19-specific CD8(+) T cells are activated in peripheral blood and accumulate in cerebrospinal fluid from HAM/TSP patients. *Proc Natl Acad Sci U S A* 95:7568–7573
- Hakoda E, Machida H, Tanaka Y, Morishita N, Sawada T, Shida H, Hoshino H, Miyoshi I (1995) Vaccination of rabbits with recombinant vaccinia virus carrying the envelope gene of human T-cell lymphotropic virus type I. *Int J Cancer* 60:567–570
- Hanon E, Hall S, Taylor GP, Saito M, Davis R, Tanaka Y, Usuku K, Osame M, Weber JN, Bangham CR (2000) Abundant tax protein expression in CD4+ T cells infected with human T-cell lymphotropic virus type I (HTLV-I) is prevented by cytotoxic T lymphocytes. *Blood* 95:1386–1392
- Harrington WJ Jr, Sheremata WA, Snodgrass SR, Emerson S, Phillips S, Berger JR (1991) Tropical spastic paraparesis/HTLV-1-associated myelopathy (TSP/HAM): treatment with an anabolic steroid danazol. *AIDS Res Hum Retrovir* 7:1031–1034
- Hayashi D, Kubota R, Takenouchi N, Nakamura T, Umehara F, Arimura K, Izumo S, Osame M (2008a) Accumulation of human T-lymphotropic virus type I (HTLV-I)-infected cells in the cerebrospinal fluid during the exacerbation of HTLV-I-associated myelopathy. *J Neurovirol* 14(5):459–463. doi:10.1080/13550280802178538
- Hayashi D, Kubota R, Takenouchi N, Tanaka Y, Hirano R, Takashima H, Osame M, Izumo S, Arimura K (2008b) Reduced Foxp3 expression with increased cytomegalovirus-specific CTL in HTLV-I-associated myelopathy. *J Neuroimmunol* 200:115–124
- Higuchi I, Nerenberg M, Yoshimine K, Yoshida M, Fukunaga H, Tajima K, Osame M (1992) Failure to detect HTLV-I by in situ hybridization in the biopsied muscles of viral carriers with polymyositis. *Muscle Nerve* 15:43–47
- Hilbum S, Rowan A, Demontis MA, MacNamara A, Asquith B, Bangham CR, Taylor GP (2011) In vivo expression of human T-lymphotropic virus type 1 basic leucine-zipper protein generates specific CD8+ and CD4+ T-lymphocyte responses that correlate with clinical outcome. *J Infect Dis* 203:529–536
- Hino S, Yamaguchi K, Katamine S, Sugiyama H, Amagasaki T, Kinoshita K, Yoshida Y, Doi H, Tsuji Y, Miyamoto T (1985) Mother-to-child transmission of human T-cell leukemia virus type-I. *Jpn J Cancer Res* 76:474–480
- Hinuma Y, Nagata K, Hanaoka M, Nakai M, Matsumoto T, Kinoshita KI, Shirakawa S, Miyoshi I (1981) Adult T-cell leukemia: antigen in an ATL cell line and detection of antibodies to the antigen in human sera. *Proc Natl Acad Sci U S A* 78:6476–6480
- Hisada M, Stuver SO, Okayama A, Li HC, Sawada T, Hanchard B, Mueller NE (2004) Persistent paradox of natural history of human T lymphotropic virus type I: parallel analyses of Japanese and Jamaican carriers. *J Infect Dis* 190:1605–1609
- Hollberg P, Hafler DA (1993) Seminars in medicine of the Beth Israel Hospital, Boston. Pathogenesis of diseases induced by human lymphotropic virus type I infection. *N Engl J Med* 328:1173–1182
- Ijichi S, Eiraku N, Osame M, Izumo S, Kubota R, Maruyama I, Matsumoto M, Sonoda S (1989) In vitro modulation of lymphocyte proliferation by prednisolone and interferon-alpha in patients with HTLV-I-associated myelopathy (HAM). *J Neuroimmunol* 23:175–178
- Inoue J, Seiki M, Taniguchi T, Tsuru S, Yoshida M (1986) Induction of interleukin 2 receptor gene expression by p40x encoded by human T-cell leukemia virus type 1. *EMBO J* 5:2883–2888
- Ishihara S, Okayama A, Stuver S, Horinouchi H, Shioiri S, Murai K, Kubota T, Yamashita R, Tachibana N, Tsubouchi H et al (1994) Association of HTLV-I antibody profile of asymptomatic carriers with proviral DNA levels of peripheral blood mononuclear cells. *J Acquir Immune Defic Syndr* 7:199–203
- Itoyama Y, Minato S, Kira J, Goto I, Sato H, Okochi K, Yamamoto N (1988) Spontaneous proliferation of peripheral blood lymphocytes increased in patients with HTLV-I-associated myelopathy. *Neurology* 38:1302–1307
- Iwasaki Y (1990) Pathology of chronic myelopathy associated with HTLV-I infection (HAM/TSP). *J Neurol Sci* 96:103–123
- Izumo S, Goto I, Itoyama Y, Okajima T, Watanabe S, Kuroda Y, Araki S, Mori M, Nagataki S, Matsukura S, Akamine T, Nakagawa M, Yamamoto I, Osame M (1996) Interferon-alpha is effective in HTLV-I-associated myelopathy: a multicenter, randomized, double-blind, controlled trial. *Neurology* 46:1016–1021
- Izumo S, Umehara F, Osame M (2000) HTLV-I-associated myelopathy. *Neuropathology* 20(Suppl):S65–S68
- Jacobson S (2002) Immunopathogenesis of human T cell lymphotropic virus type I-associated neurologic disease. *J Infect Dis* 186(Suppl 2):S187–S192
- Jacobson S, Shida H, McFarlin DE, Fauci AS, Koenig S (1990) Circulating CD8+ cytotoxic T lymphocytes specific for HTLV-I pX in patients with HTLV-I associated neurological disease. *Nature* 348:245–248
- Jain P, Manuel SL, Khan ZK, Ahuja J, Quann K, Wigdahl B (2009) DC-SIGN mediates cell-free infection and transmission of human T-cell lymphotropic virus type 1 by dendritic cells. *J Virol* 83:10908–10921
- Jeffery KJ, Usuku K, Hall SE, Matsumoto W, Taylor GP, Procter J, Bunce M, Ogg GS, Welsh KI, Weber JN, Lloyd AL, Nowak MA, Nagai M, Kodama D, Izumo S, Osame M, Bangham CR (1999) HLA alleles determine human T-lymphotropic virus-I (HTLV-I) proviral load and the risk of HTLV-I-associated myelopathy. *Proc Natl Acad Sci U S A* 96:3848–3853
- Jeffery KJ, Siddiqui AA, Bunce M, Lloyd AL, Vine AM, Witkover AD, Izumo S, Usuku K, Welsh KI, Osame M, Bangham CR (2000) The influence of HLA class I alleles and heterozygosity on the outcome of human T cell lymphotropic virus type I infection. *J Immunol* 165:7278–7284
- Jones KS, Petrow-Sadowski C, Huang YK, Bertolette DC, Ruscetti FW (2008) Cell-free HTLV-1 infects dendritic cells leading to transmission and transformation of CD4(+) T cells. *Nat Med* 14:429–436
- Kannagi M, Harada S, Maruyama I, Inoko H, Igarashi H, Kuwashima G, Sato S, Morita M, Kidokoro M, Sugimoto M et al (1991) Predominant recognition of human T cell leukemia virus type I (HTLV-I) pX gene products by human CD8+ cytotoxic T cells directed against HTLV-I-infected cells. *Int Immunol* 3:761–767
- Kattan T, MacNamara A, Rowan AG, Nose H, Mosley AJ, Tanaka Y, Taylor GP, Asquith B, Bangham CR (2009) The avidity and lytic efficiency of the CTL response to HTLV-1. *J Immunol* 182:5723–5729
- Kinoshita K, Amagasaki T, Hino S, Doi H, Yamanouchi K, Ban N, Momita S, Ikeda S, Kamihira S, Ichimaru M et al (1987) Milk-borne transmission of HTLV-I from carrier mothers to their children. *Jpn J Cancer Res* 78:674–680
- Kinpara S, Hasegawa A, Utsunomiya A, Nishitsuji H, Furukawa H, Masuda T, Kannagi M (2009) Stromal cell-mediated suppression of human T-cell leukemia virus type 1 expression in vitro and in vivo by type I interferon. *J Virol* 83:5101–5108
- Kira J, Nakamura M, Sawada T, Koyanagi Y, Ohori N, Itoyama Y, Yamamoto N, Sakaki Y, Goto I (1992) Antibody titers to HTLV-I-p40tax protein and gag-env hybrid protein in HTLV-I-associated myelopathy/tropical spastic paraparesis: correlation with increased HTLV-I proviral DNA load. *J Neurol Sci* 107:98–104
- Kitze B, Usuku K, Yamano Y, Yashiki S, Nakamura M, Fujiyoshi T, Izumo S, Osame M, Sonoda S (1998) Human CD4+ T lymphocytes recognize a highly conserved epitope of human T lymphotropic

- virus type 1 (HTLV-1) env gp21 restricted by HLA DRB1*0101. *Clin Exp Immunol* 111:278–285
- Kiwaki T, Umehara F, Arimura Y, Izumo S, Arimura K, Itoh K, Osame M (2003) The clinical and pathological features of peripheral neuropathy accompanied with HTLV-I associated myelopathy. *J Neurol Sci* 206:17–21
- Kiyokawa T, Yoshikura H, Hattori S, Seiki M, Yoshida M (1984) Envelope proteins of human T-cell leukemia virus: expression in *Escherichia coli* and its application to studies of env gene functions. *Proc Natl Acad Sci U S A* 81:6202–6206
- Klenerman P, Zinkernagel RM (1997) What can we learn about human immunodeficiency virus infection from a study of lymphocytic choriomeningitis virus? *Immunol Rev* 159:5–16
- Kodama D, Saito M, Matsumoto W, Sabouri AH, Izumo S, Arimura K, Usuku K, Bangham CR, Osame M (2004) Longer dinucleotide repeat polymorphism in matrix metalloproteinase-9 (MMP-9) gene promoter which correlates with higher HTLV-I Tax mediated transcriptional activity influences the risk of HTLV-I associated myelopathy/tropical spastic paraparesis (HAM/TSP). *J Neuroimmunol* 156:188–194
- Kramer A, Maloney EM, Morgan OS, Rodgers-Johnson P, Manns A, Murphy EL, Larsen S, Cranston B, Murphy J, Benichou J et al (1995) Risk factors and cofactors for human T-cell lymphotropic virus type I (HTLV-I)-associated myelopathy/tropical spastic paraparesis (HAM/TSP) in Jamaica. *Am J Epidemiol* 142:1212–1220
- Kubota R, Kawanishi T, Matsubara H, Manns A, Jacobson S (1998) Demonstration of human T lymphotropic virus type I (HTLV-I) tax-specific CD8+ lymphocytes directly in peripheral blood of HTLV-I-associated myelopathy/tropical spastic paraparesis patients by intracellular cytokine detection. *J Immunol* 161:482–488
- Kuroda Y, Takashima H, Ikeda A, Endo C, Neshige R, Kakigi R, Shibasaki H (1991) Treatment of HTLV-I-associated myelopathy with high-dose intravenous gammaglobulin. *J Neurol* 238:309–314
- LaGrenade L, Hanchard B, Fletcher V, Cranston B, Blattner W (1990) Infective dermatitis of Jamaican children: a marker for HTLV-I infection. *Lancet* 336:1345–1347
- Lal RB, Giam CZ, Coligan JE, Rudolph DL (1994) Differential immune responsiveness to the immunodominant epitopes of regulatory proteins (tax and rex) in human T cell lymphotropic virus type I-associated myelopathy. *J Infect Dis* 169:496–503
- Liu SY, Sanchez DJ, Cheng G (2011) New developments in the induction and antiviral effectors of type I interferon. *Curr Opin Immunol* 23:57–64
- Macatonia SE, Cruickshank JK, Rudge P, Knight SC (1992) Dendritic cells from patients with tropical spastic paraparesis are infected with HTLV-I and stimulate autologous lymphocyte proliferation. *AIDS Res Hum Retrovir* 8:1699–1706
- Macnamara A, Rowan A, Hilburn S, Kadolsky U, Fujiwara H, Suemori K, Yasukawa M, Taylor G, Bangham CR, Asquith B (2010) HLA class I binding of HBZ determines outcome in HTLV-I infection. *PLoS Pathog* 6
- Makino M, Azuma M, Wakamatsu SI, Suruga Y, Izumo S, Yokoyama MM, Baba M (1999) Marked suppression of T cells by a benzothioephene derivative in patients with human T-lymphotropic virus type I-associated myelopathy/tropical spastic paraparesis. *Clin Diagn Lab Immunol* 6:316–322
- Manns A, Miley WJ, Wilks RJ, Morgan OS, Hanchard B, Wharfe G, Cranston B, Maloney E, Welles SL, Blattner WA, Waters D (1999) Quantitative proviral DNA and antibody levels in the natural history of HTLV-I infection. *J Infect Dis* 180:1487–1493
- Manuel SL, Schell TD, Acheampong E, Rahman S, Khan ZK, Jain P (2009) Presentation of human T cell leukemia virus type 1 (HTLV-1) Tax protein by dendritic cells: the underlying mechanism of HTLV-1-associated neuroinflammatory disease. *J Leukoc Biol* 86:1205–1216
- Martin F, Castro H, Gabriel C, Adonis A, Fedina A, Harrison L, Brodnicki L, Demontis MA, Babiker AG, Weber JN, Bangham CR, Taylor GP (2012) Cyclosporin A proof of concept study in patients with active, progressive HTLV-1 associated myelopathy/tropical spastic paraparesis. *PLoS Negl Trop Dis* 6:e1675
- Maruyama I, Chihara J, Sakashita I, Mizoguchi R, Mori S, Usuku K, Jonosono M, Tara M, Matsumoto M, Niina S, Sonoda S, Yasaki S, Osame M (1988) HTLV-I associated bronchopneumonopathy—a new clinical entity? *Am Rev Resp Dis* 137:46
- Matsuo H, Nakamura T, Tsujihata M, Kinoshita I, Satoh A, Tomita I, Shirabe S, Shibayama K, Nagataki S (1988) Plasmapheresis in treatment of human T-lymphotropic virus type-I associated myelopathy. *Lancet* 2:1109–1113
- Matsuoka M, Jeang KT (2011) Human T-cell leukemia virus type 1 (HTLV-1) and leukemic transformation: viral infectivity, Tax, HBZ and therapy. *Oncogene* 30:1379–1389
- Matsuura E, Yamano Y, Jacobson S (2010) Neuroimmunity of HTLV-I infection. *J Neuroimmune Pharmacol* 5:310–325
- Matsuzaki T, Saito M, Usuku K, Nose H, Izumo S, Arimura K, Osame M (2005) A prospective uncontrolled trial of fermented milk drink containing viable *Lactobacillus casei* strain Shirota in the treatment of HTLV-I associated myelopathy/tropical spastic paraparesis. *J Neurol Sci* 237:75–81
- Melamed A, Laydon DJ, Gillet NA, Tanaka Y, Taylor GP, Bangham CR (2013) Genome-wide determinants of proviral targeting, clonal abundance and expression in natural HTLV-1 infection. *PLoS Pathog* 9:e1003271
- Miyoshi I, Kubonishi I, Yoshimoto S, Akagi T, Ohtsuki Y, Shiraishi Y, Nagata K, Hinuma Y (1981) Type C virus particles in a cord T-cell line derived by co-cultivating normal human cord leukocytes and human leukaemic T cells. *Nature* 294:770–771
- Mochizuki M, Yamaguchi K, Takatsuki K, Watanabe T, Mori S, Tajima K (1992) HTLV-I and uveitis. *Lancet* 339:1110
- Morgan OS, Rodgers-Johnson P, Mora C, Char G (1989) HTLV-1 and polymyositis in Jamaica. *Lancet* 2:1184–1187
- Murata N, Hakoda E, Machida H, Ikezoe T, Sawada T, Hoshino H, Miyoshi I (1996) Prevention of human T cell lymphotropic virus type I infection in Japanese macaques by passive immunization. *Leukemia* 10:1971–1974
- Nagai M, Usuku K, Matsumoto W, Kodama D, Takenouchi N, Moritoyo T, Hashiguchi S, Ichinose M, Bangham CR, Izumo S, Osame M (1998) Analysis of HTLV-I proviral load in 202 HAM/TSP patients and 243 asymptomatic HTLV-I carriers: high proviral load strongly predisposes to HAM/TSP. *J Neurovirol* 4:586–593
- Nagai M, Kubota R, Greten TF, Schneck JP, Leist TP, Jacobson S (2001a) Increased activated human T cell lymphotropic virus type I (HTLV-I) Tax11-19-specific memory and effector CD8+ cells in patients with HTLV-I-associated myelopathy/tropical spastic paraparesis: correlation with HTLV-I provirus load. *J Infect Dis* 183:197–205
- Nagai M, Yamano Y, Brennan MB, Mora CA, Jacobson S (2001b) Increased HTLV-I proviral load and preferential expansion of HTLV-I Tax-specific CD8+ T cells in cerebrospinal fluid from patients with HAM/TSP. *Ann Neurol* 50:807–812
- Nagasato K, Nakamura T, Shirabe S, Shibayama K, Ohishi K, Ichinose K, Tsujihata M, Nagataki S (1991) Presence of serum anti-human T-lymphotropic virus type I (HTLV-I) IgM antibodies means persistent active replication of HTLV-I in HTLV-I-associated myelopathy. *J Neurol Sci* 103:203–208
- Nakagawa M, Izumo S, Ijichi S, Kubota H, Arimura K, Kawabata M, Osame M (1995) HTLV-I-associated myelopathy: analysis of 213 patients based on clinical features and laboratory findings. *J Neurovirol* 1:50–61
- Nakagawa M, Nakahara K, Maruyama Y, Kawabata M, Higuchi I, Kubota H, Izumo S, Arimura K, Osame M (1996) Therapeutic trials in 200 patients with HTLV-I-associated myelopathy/tropical spastic paraparesis. *J Neurovirol* 2:345–355
- Nakamura H, Hayami M, Ohta Y, Ishikawa K, Tsujimoto H, Kiyokawa T, Yoshida M, Sasagawa A, Honjo S (1987) Protection of cynomolgus monkeys against infection by human T-cell leukemia virus type-I by

- immunization with viral env gene products produced in *Escherichia coli*. *Int J Cancer* 40:403–407
- Nascimento CR, Lima MA, de Andrada Serpa MJ, Espindola O, Leite AC, Echevarria-Lima J (2011) Monocytes from HTLV-1-infected patients are unable to fully mature into dendritic cells. *Blood* 117:489–499
- Ndhlovu LC, Snyder-Cappione JE, Carvalho KI, Leal FE, Loo CP, Bruno FR, Jha AR, Devita D, Hasenkrug AM, Barbosa HM, Segurado AC, Nixon DF, Murphy EL, Kallas EG (2009) Lower numbers of circulating natural killer T (NK T) cells in individuals with human T lymphotropic virus type 1 (HTLV-1) associated neurological disease. *Clin Exp Immunol* 158(3):294–299. doi:10.1111/j.1365-2249.2009.04019.x
- Nishioka K, Maruyama I, Sato K, Kitajima I, Nakajima Y, Osame M (1989) Chronic inflammatory arthropathy associated with HTLV-I. *Lancet* 1:441
- Nose H, Kubota R, Seth NP, Goon PK, Tanaka Y, Izumo S, Usuku K, Ohara Y, Wucherpfennig KW, Bangham CR, Osame M, Saito M (2007) Ex vivo analysis of human T lymphotropic virus type 1-specific CD4+ cells by use of a major histocompatibility complex class II tetramer composed of a neurological disease-susceptibility allele and its immunodominant peptide. *J Infect Dis* 196:1761–1772
- Oh U, Grant C, Griffith C, Fugo K, Takenouchi N, Jacobson S (2006) Reduced Foxp3 protein expression is associated with inflammatory disease during human t lymphotropic virus type 1 Infection. *J Infect Dis* 193:1557–1566
- Olindo S, Cabre P, Lezin A, Merle H, Saint-Vil M, Signate A, Bonnan M, Chalou A, Magnani L, Cesaire R, Smadja D (2006) Natural history of human T-lymphotropic virus 1-associated myelopathy: a 14-year follow-up study. *Arch Neurol* 63:1560–1566
- Olindo S, Belrose G, Gillet N, Rodriguez S, Boxus M, Verlaeten O, Asquith B, Bangham C, Signate A, Smadja D, Lezin A, Cesaire R, Willems L (2011) Safety of long-term treatment of HAM/TSP patients with valproic acid. *Blood* 118:6306–6309
- Osame M, Usuku K, Izumo S, Ijichi N, Amitani H, Igata A, Matsumoto M, Tara M (1986) HTLV-I associated myelopathy, a new clinical entity. *Lancet* 1:1031–1032
- Osame M, Janssen R, Kubota H, Nishitani H, Igata A, Nagataki S, Mori M, Goto I, Shimabukuro H, Khabbaz R et al (1990) Nationwide survey of HTLV-I-associated myelopathy in Japan: association with blood transfusion. *Ann Neurol* 28:50–56
- Poiesz BJ, Ruscetti FW, Gazdar AF, Bunn PA, Minna JD, Gallo RC (1980) Detection and isolation of type C retrovirus particles from fresh and cultured lymphocytes of a patient with cutaneous T-cell lymphoma. *Proc Natl Acad Sci U S A* 77:7415–7419
- Proietti FA, Carneiro-Proietti AB, Catalan-Soares BC, Murphy EL (2005) Global epidemiology of HTLV-I infection and associated diseases. *Oncogene* 24:6058–6068
- Rahman S, Manuel SL, Khan ZK, Wigdahl B, Acheampong E, Tangy F, Jain P (2010) Depletion of dendritic cells enhances susceptibility to cell-free infection of human T cell leukemia virus type 1 in CD11c-diphtheria toxin receptor transgenic mice. *J Immunol* 184:5553–5561
- Rahman S, Khan ZK, Wigdahl B, Jennings SR, Tangy F, Jain P (2011) Murine FLT3 ligand-derived dendritic cell-mediated early immune responses are critical to controlling cell-free human T cell leukemia virus type 1 infection. *J Immunol* 186:390–402
- Roucoux DF, Wang B, Smith D, Nass CC, Smith J, Hutching ST, Newman B, Lee TH, Chafets DM, Murphy EL (2005) A prospective study of sexual transmission of human T lymphotropic virus (HTLV)-I and HTLV-II. *J Infect Dis* 191:1490–1497
- Sabouri AH, Saito M, Lloyd AL, Vine AM, Witkover AW, Furukawa Y, Izumo S, Arimura K, Marshall SE, Usuku K, Bangham CR, Osame M (2004) Polymorphism in the interleukin-10 promoter affects both provirus load and the risk of human T lymphotropic virus type I-associated myelopathy/tropical spastic paraparesis. *J Infect Dis* 190:1279–1285
- Sabouri AH, Saito M, Usuku K, Bajestan SN, Mahmoudi M, Foroughipour M, Sabouri Z, Abbaspour Z, Goharjoo ME, Khayami E, Hasani A, Izumo S, Arimura K, Farid R, Osame M (2005) Differences in viral and host genetic risk factors for development of human T-cell lymphotropic virus type 1 (HTLV-1)-associated myelopathy/tropical spastic paraparesis between Iranian and Japanese HTLV-1-infected individuals. *J Gen Virol* 86:773–781
- Sabouri AH, Usuku K, Hayashi D, Izumo S, Ohara Y, Osame M, Saito M (2008) Impaired function of human T-lymphotropic virus type 1 (HTLV-1)-specific CD8+ T cells in HTLV-1-associated neurologic disease. *Blood* 112:2411–2420
- Saito M, Taylor GP, Saito A, Furukawa Y, Usuku K, Weber JN, Osame M, Bangham CR (2001) In vivo selection of T-cell receptor junctional region sequences by HLA-A2 human T-cell lymphotropic virus type 1 Tax11-19 peptide complexes. *J Virol* 75:1065–1071
- Saito M, Higuchi I, Saito A, Izumo S, Usuku K, Bangham CR, Osame M (2002) Molecular analysis of T cell clonotypes in muscle-infiltrating lymphocytes from patients with human T lymphotropic virus type 1 polymyositis. *J Infect Dis* 186:1231–1241
- Saito M, Braud VM, Goon P, Hanon E, Taylor GP, Saito A, Eiraku N, Tanaka Y, Usuku K, Weber JN, Osame M, Bangham CR (2003) Low frequency of CD94/NKG2A+ T lymphocytes in patients with HTLV-1-associated myelopathy/tropical spastic paraparesis, but not in asymptomatic carriers. *Blood* 102:577–584
- Saito M, Jain P, Tsukasaki K, Bangham CR (2012) HTLV-1 infection and its associated diseases. *Leuk Res Treat* 2012:123637
- Sakaguchi S, Ono M, Setoguchi R, Yagi H, Hori S, Fehervari Z, Shimizu J, Takahashi T, Nomura T (2006) Foxp3+ CD25+ CD4+ natural regulatory T cells in dominant self-tolerance and autoimmune disease. *Immunol Rev* 212:8–27
- Samuel CE (2001) Antiviral actions of interferons. *Clin Microbiol Rev* 14:778–809, table of contents
- Shida H, Tochikura T, Sato T, Konno T, Hirayoshi K, Seki M, Ito Y, Hatanaka M, Hinuma Y, Sugimoto M et al (1987) Effect of the recombinant vaccinia viruses that express HTLV-I envelope gene on HTLV-I infection. *EMBO J* 6:3379–3384
- Shirabe S, Nakamura T, Tsujino A, Nishiura Y, Furuya T, Goto H, Suenaga A, Nakane S, Yoshimura T, Nagataki S (1997) Successful application of pentoxifylline in the treatment of HTLV-I associated myelopathy. *J Neurol Sci* 151:97–101
- Sugimoto M, Nakashima H, Watanabe S, Uyama E, Tanaka F, Ando M, Araki S, Kawasaki S (1987) T-lymphocyte alveolitis in HTLV-I-associated myelopathy. *Lancet* 2:1220
- Sugimoto M, Nakashima H, Matsumoto M, Uyama E, Ando M, Araki S (1989) Pulmonary involvement in patients with HTLV-I-associated myelopathy: increased soluble IL-2 receptors in bronchoalveolar lavage fluid. *Am Rev Respir Dis* 139:1329–1335
- Tajima K (1990) The 4th nation-wide study of adult T-cell leukemia/lymphoma (ATL) in Japan: estimates of risk of ATL and its geographical and clinical features. The T- and B-cell Malignancy Study Group. *Int J Cancer* 45:237–243
- Takenouchi N, Yamano Y, Usuku K, Osame M, Izumo S (2003) Usefulness of proviral load measurement for monitoring of disease activity in individual patients with human T-lymphotropic virus type I-associated myelopathy/tropical spastic paraparesis. *J Neurovirol* 9:29–35
- Tanaka Y, Ishii K, Sawada T, Ohtsuki Y, Hoshino H, Yanagihara R, Miyoshi I (1993) Prophylaxis against a Melanesian variant of human T-lymphotropic virus type I (HTLV-I) in rabbits using HTLV-I immune globulin from asymptotically infected Japanese carriers. *Blood* 82:3664–3667
- Tanaka Y, Tanaka R, Terada E, Koyanagi Y, Miyano-Kurosaki N, Yamamoto N, Baba E, Nakamura M, Shida H (1994) Induction of antibody responses that neutralize human T-cell leukemia virus type I infection in vitro and in vivo by peptide immunization. *J Virol* 68:6323–6331

- Tattermusch S, Skinner JA, Chaussabel D, Banchereau J, Berry MP, McNab FW, O'Garra A, Taylor GP, Bangham CR (2012) Systems biology approaches reveal a specific interferon-inducible signature in HTLV-1 associated myelopathy. *PLoS Pathog* 8:e1002480
- Taylor GP, Goon P, Furukawa Y, Green H, Barfield A, Mosley A, Nose H, Babiker A, Rudge P, Usuku K, Osame M, Bangham CR, Weber JN (2006) Zidovudine plus lamivudine in human T-lymphotropic virus type-I-associated myelopathy: a randomised trial. *Retrovirology* 3:63
- Terada K, Katamine S, Eguchi K, Moriuchi R, Kita M, Shimada H, Yamashita I, Iwata K, Tsuji Y, Nagataki S et al (1994) Prevalence of serum and salivary antibodies to HTLV-1 in Sjogren's syndrome. *Lancet* 344:1116–1119
- Toulza F, Heaps A, Tanaka Y, Taylor GP, Bangham CR (2008) High frequency of CD4+ FoxP3+ cells in HTLV-1 infection: inverse correlation with HTLV-1-specific CTL response. *Blood* 111:5047–5053
- Toulza F, Nosaka K, Tanaka Y, Schioppa T, Balkwill F, Taylor GP, Bangham CR (2010) Human T-lymphotropic virus type 1-induced CC chemokine ligand 22 maintains a high frequency of functional FoxP3+ regulatory T cells. *J Immunol* 185:183–189
- Uchiyama T (1997) Human T cell leukemia virus type I (HTLV-I) and human diseases. *Annu Rev Immunol* 15:15–37
- Uchiyama T, Yodoi J, Sagawa K, Takatsuki K, Uchino H (1977) Adult T-cell leukemia: clinical and hematologic features of 16 cases. *Blood* 50:481–492
- Verdonck K, Gonzalez E, Van Dooren S, Vandamme AM, Vanham G, Gotuzzo E (2007) Human T-lymphotropic virus 1: recent knowledge about an ancient infection. *Lancet Infect Dis* 7:266–281
- Vine AM, Witkover AD, Lloyd AL, Jeffery KJ, Siddiqui A, Marshall SE, Bunce M, Eiraku N, Izumo S, Usuku K, Osame M, Bangham CR (2002) Polygenic control of human T lymphotropic virus type I (HTLV-I) provirus load and the risk of HTLV-I-associated myelopathy/tropical spastic paraparesis. *J Infect Dis* 186:932–939
- Vine AM, Heaps AG, Kafantzi L, Mosley A, Asquith B, Witkover A, Thompson G, Saito M, Goon PK, Carr L, Martinez-Murillo F, Taylor GP, Bangham CR (2004) The role of CTLs in persistent viral infection: cytolytic gene expression in CD8+ lymphocytes distinguishes between individuals with a high or low proviral load of human T cell lymphotropic virus type 1. *J Immunol* 173:5121–5129
- Yamano Y, Takenouchi N, Li HC, Tomaru U, Yao K, Grant CW, Maric DA, Jacobson S (2005) Virus-induced dysfunction of CD4+ CD25+ T cells in patients with HTLV-I-associated neuroimmunological disease. *J Clin Invest* 115:1361–1368
- Yoshida M, Seiki M, Yamaguchi K, Takatsuki K (1984) Monoclonal integration of human T-cell leukemia provirus in all primary tumors of adult T-cell leukemia suggests causative role of human T-cell leukemia virus in the disease. *Proc Natl Acad Sci U S A* 81:2534–2537
- Yoshioka A, Hirose G, Ueda Y, Nishimura Y, Sakai K (1993) Neuropathological studies of the spinal cord in early stage HTLV-I-associated myelopathy (HAM). *J Neurol Neurosurg Psychiatry* 56:1004–1007
- Yu F, Itoyama Y, Fujihara K, Goto I (1991) Natural killer (NK) cells in HTLV-I-associated myelopathy/tropical spastic paraparesis-decrease in NK cell subset populations and activity in HTLV-I seropositive individuals. *J Neuroimmunol* 33:121–128

Elimination of Human T Cell Leukemia Virus Type-1-Infected Cells by Neutralizing and Antibody-Dependent Cellular Cytotoxicity-Inducing Antibodies Against Human T Cell Leukemia Virus Type-1 Envelope gp46

Yuetsu Tanaka,¹ Yoshiaki Takahashi,¹ Reiko Tanaka,¹ Akira Kodama,¹ Hideki Fujii,¹ Atsuhiko Hasegawa,² Mari Kannagi,² Aftab A. Ansari,³ and Mineki Saito⁴

Abstract

Human T cell leukemia virus type-1 (HTLV-1) is prevalent worldwide with foci of high prevalence. However, to date no effective vaccine or drug against HTLV-1 infection has been developed. In efforts to define the role of antibodies in the control of HTLV-1 infection, we capitalized on the use of our previously defined anti-gp46 neutralizing monoclonal antibody (mAb) (clone LAT-27) and high titers of human anti-HTLV-1 IgG purified from HAM/TSP patients (HAM-IgG). LAT-27 and HAM-IgG completely blocked syncytium formation and T cell immortalization mediated by HTLV-1 *in vitro*. The addition of these antibodies to cultures of CD8⁺ T cell-depleted peripheral blood mononuclear cells (PBMCs) from HAM/TSP patients at the initiation of culture not only decreased the numbers of Tax-expressing cells and the production of HTLV-1 p24 but also inhibited the spontaneous immortalization of T cells. Coculture of *in vitro*-HTLV-1-immortalized T cell lines with autologous PBMCs in the presence of LAT-27 or HAM-IgG, but not an F(ab')₂ fragment of LAT-27 or non-neutralizing anti-gp46 mAbs, resulted in depletion of HTLV-1-infected cells. A 24-h ⁵¹Cr release assay showed the presence of significant antibody-dependent cellular cytotoxicity (ADCC) activity in LAT-27 and HAM-IgG, but not F(ab')₂ of LAT-27, resulting in the depletion of HTLV-1-infected T cells by autologous PBMCs. The depletion of natural killer (NK) cells from the effector PBMCs reduced this ADCC activity. Altogether, the present data demonstrate that the neutralizing and ADCC-inducing activities of anti-HTLV-1 antibodies are capable of reducing infection and eliminating HTLV-1-infected cells in the presence of autologous PBMCs.

Introduction

HUMAN T CELL LEUKEMIA VIRUS type-1 (HTLV-1) is the first human retrovirus that was etiologically associated with adult T cell leukemia (ATL) and HTLV-1-associated myelopathy/tropical spastic paraparesis (HAM/TSP).¹⁻⁴ HTLV-1 is prevalent worldwide with foci of high prevalence in southwest Japan, the Caribbean islands, South America, and a part of Central Africa. The total number of HTLV-1 carriers is currently estimated to be 10–20 million.⁵ The majority of HTLV-1 carriers remain asymptomatic throughout their lives, and approximately 5% of HTLV-1-infected individuals will develop either ATL or HAM/TSP after prolonged latency periods.

HTLV-1 is transmitted through contact with bodily fluids containing infected cells most often from mother to child through breast milk or via blood transfusion. It has been previously established that HTLV-1 efficiently spreads from cell to cell via the formation of virological synapses.⁶ More recently, however, the formation of extracellular HTLV-1 viral particles similar to the formation of bacterial films has also been shown to be effective in viral transmission.⁷ HTLV-1-antigen-expressing cells are difficult to detect at least in fresh peripheral blood mononuclear cells (PBMCs) from HTLV-1-infected individuals.⁸ However, when these PBMCs are isolated from the blood and cultured *in vitro*, some T cells begin to produce HTLV-1 antigen^{9,10} followed by spontaneous immortalization of the cells in media containing interleukin-2 (IL-2).¹¹

¹Department of Immunology, Graduate School of Medicine, University of the Ryukyus, Okinawa, Japan.

²Department of Immunotherapeutics, Graduate School, Tokyo Medical and Dental University, Tokyo, Japan.

³Department of Pathology, Emory University School of Medicine, Atlanta, Georgia.

⁴Department of Microbiology, Kawasaki Medical School, Okayama, Japan.

Although it has been suggested that HTLV-1 can stay dormant in infected cells and become resistant to immune effector mechanisms by ratcheting down its antigen production,¹² the continued presence of strong CD8⁺ cytotoxic T lymphocyte (CTL) responses¹³ and readily detectable levels of antibodies specific for HTLV-1 antigens in HTLV-1-infected people¹⁴ indicates that persistent production of HTLV-1 must occur *in vivo* to maintain such effector mechanisms. Escape from immune effector mechanisms by spontaneous mutation of key residues is unlikely, due to the high degree of genomic stability that is characteristic of the HTLV-1 genome.¹⁵ It has been suggested that HTLV-1-infected cells expressing HTLV-1 antigens occur at a low enough frequency that they are constantly being eliminated by HTLV-1-specific CTL *in vivo*¹⁰ without leading to immune exhaustion. Besides CTL and virus neutralizing antibodies, there has been renewed interest in the potential role of antibody-dependent cellular cytotoxicity (ADCC) as an effector mechanism against a number of viral infections. This view has been highlighted by the recent demonstration of the potential role of ADCC in the only known partially successful human RV144 trial of a vaccine against human immunodeficiency virus type-1 (HIV-1).¹⁶ The ADCC activity against HTLV-1 was first reported by Miyakoshi *et al.* in 1984¹⁷ followed by a number of other reports.^{18–21}

So far, several lines of evidence show that the HTLV-1 envelope gp46 antigen serves as a major target of ADCC.^{22–24} Antibodies against gp46 antigen are commonly detected in the sera of HTLV-1-infected individuals.^{25–27} However, the precise role of ADCC effector mechanism(s) in controlling HTLV-1 infection has been lacking. A possible involvement of anti-HTLV-1 antibodies in the suppression of spontaneous HTLV-1 antigen expression by HTLV-1-infected cells was first reported by Tochikura *et al.*²⁸ These investigators showed that serum IgG from HTLV-1-infected donors interfered with HTLV-1 antigen expression by *in vitro*-cultured PBMCs from both ATL patients and healthy HTLV-1 carriers. However, the precise mechanism by which this was mediated remained unclear.

In efforts to define the role of antibodies with neutralizing and ADCC-inducing activities in the control of HTLV-1 infection, we capitalized on the use of our previously defined rat anti-gp46 neutralizing monoclonal antibody (mAb) (LAT-27)²⁹ and pooled human anti-HTLV-1 IgG purified from HAM/TSP patients (HAM-IgG). Studies were conducted to evaluate the potential of these antibodies to block HTLV-1 infection and eliminate HTLV-1-infected cells from autologous T cell cultures that had previously been infected with HTLV-1 *in vivo* or *in vitro*. Results of these studies show that monoclonal LAT-27 and the polyclonal HAM-IgG are not only capable of mediating neutralization and ADCC, but are also highly effective in the elimination of HTLV-1-infected cells in the presence of fresh autologous PBMCs while preventing *de novo* infection with HTLV-1.

Materials and Methods

Reagents

The medium used throughout was RPMI 1640 medium (Sigma-Aldrich, Inc., St. Louis, MO) supplemented with

10% fetal calf serum (FCS), 100 U/ml of penicillin, and 100 μ g/ml of streptomycin (hereinafter called RPMI medium). Anti-human CD3 (clone OKT-3) and anti-CD28 (clone 28.2) mAbs were purchased from the American Type Culture Collection (Rockville, MD) and Biologend (San Diego, CA), respectively.

The rat and mouse mAbs utilized in the studies reported herein were produced and characterized by our laboratory previously.^{29–34} These antibodies were rat IgG2b anti-gp46 (clones LAT-27 and LAT-25), rat IgG2a anti-gp46 (clone LAT-12), rat IgG2b anti-HCV (clone Mo-8), rat IgG2a anti-HTLV-1 p24 (clone WAG-24), mouse IgG1 anti-HTLV-1 gp46 (clone MET-3), mouse IgG3 anti-HTLV-1 Tax (clone Lt-4), mouse IgG1 anti-p24 (clone NOR-1), and mouse IgG1 anti-HIV-1 p24 (clone 2C2). These in-house mAbs were purified from the ascites fluids of groups of CB.17-SCID mice carrying the appropriate hybridoma cell line. The ascites fluid was subjected to ammonium sulfate precipitation followed by gel filtration using Superdex G-200 (GE Healthcare, Tokyo, Japan). Aliquots of these mAbs were labeled with either fluorescein isothiocyanate (FITC), Alexafluor 488, Alexafluor 647, HRP (Dojindo, Kumamoto, Japan), or Cy-5 (GE Healthcare) according to the manufacturer's instructions. The FITC- or phycoerythrin (PE)-labeled mouse mAbs against human CD3, CD4, CD8, CD14, CD16, CD19, or CD56 and unlabeled mouse anti-CD16 and anti-CD32 mAbs were purchased from Abcam.

For cell depletion, magnetic beads labeled with anti-CD4, CD8, CD14, CD16, CD19, and antimouse IgG (Dynal) and those labeled with anti-CD56 mAb (LifeTec) were used according to the manufacturer's recommendations. Mitomycin-C (MMC) was commercially purchased from Kyowa Kirin (Tokyo, Japan) and used at 50 μ g/ml in RPMI medium. A purified F(ab')₂ fragment of LAT-27 IgG generated by enzymatic digestion of LAT-27 IgG was purchased from IBL Inc. (Gunma, Japan). Human IgG was purified from pooled plasma from three normal donors (normal IgG) and three HAM patients (HAM-IgG) using protein-G affinity purification kits (GE Healthcare).

The protocols for the use of human PBMCs and animals were approved by the Human IRB and the Institutional Animal Care and Use Committee (IACUC) on clinical and animal research of the University of the Ryukyus prior to initiation of the present study.

Cell cultures

PBMCs were isolated from heparinized blood by standard density gradient centrifugation using Lympholyte (Cedarlane, Burlington, Canada). Some PBMCs were cryopreserved using a cell freezing media (Cell reservoir, Nakarai Tesque Inc., Kyoto, Japan). The method to activate PBMCs with anti-CD3 and CD28 mAbs has been described previously.³⁴ The HTLV-1-producing T cell lines utilized included MT-2, HUT102, IL-2-dependent CD4⁻CD8⁺ ILT-M1 cells derived from an HAM/TSP patient, CD4⁺CD8⁻ ILT-H2 cells, ATL-3 cells derived from ATL patients, and a number of other T cell lines derived from normal PBMCs following *in vitro* immortalization by cocultivation with MMC-treated ILT-M1 cells. These cell lines were maintained in culture using RPMI medium containing 20 U/ml IL-2.

The syncytium inhibition assay was performed using an assay that involved the coculture of ILT-M1 and Jurkat cells.³⁵ A suspension of ILT-M1 cells in a volume of 25 μ l containing 5×10^4 cells in 20 U/ml IL-2 media was mixed with 50 μ l of serially diluted antibody to be tested in a flat-bottom 96-well microtiter plate for 5 min followed by the addition of 5×10^4 Jurkat cells in a volume of 25 μ l of medium. After coculture for 18~24 h at 37°C in a 5% CO₂ humidified incubator, syncytium formation was microscopically observed using an inverted microscope and the minimum concentration of antibody that showed complete blocking of syncytium formation was determined. In some experiments, gp46 antigen that had been affinity purified from the culture supernatants of MT-2 cells using our anti-gp46 mAb (MET-3) antibody-coupled Sepharose 4B column (GE Healthcare) was used as a target antigen to serve as a specificity control to block the syncytia neutralization of antibodies.³⁶

The HTLV-1-immortalization inhibition assay was performed according to the method described previously with a slight modification.²⁹ Briefly, PBMCs from HTLV-1-negative healthy donors were activated with immobilized OKT-3 together with soluble anti-CD28 mAb overnight, and these cells (5×10^4 cells) were cocultured with an equal number of MMC-treated ILT-M1 cells in wells of round-bottom 96-well microtiter plates (BD) in 0.2 ml media containing 20 U/ml IL-2 at 37°C in a humidified 5% CO₂ incubator in the presence or absence of the test antibodies. The medium was replaced with fresh IL-2-containing media with or without antibody every 3–5 days. Aliquots of the cocultured cells were monitored every week for intracellular expression of Tax antigen, and the culture supernatants were monitored for the production of p24.

The assay for inhibition of spontaneous HTLV-1 antigen expression in PBMCs from HAM/TSP patients was performed as follows. PBMCs from HAM/TSP patients after depletion of CD8⁺ cells were cultured *in vitro* at 1×10^6 cells/ml in 20 U/ml IL-2-containing RPMI medium at 37°C in a 24-well plate (BD) in the presence of various anti-HTLV-1 mAbs, HAM-IgG, or controls. After 24 h, cells were harvested and an aliquot stained with anti-CD3, CD4, or CD8 mAb, followed by fixation and subsequent intracellular Tax staining. The frequency and absolute cell numbers of Tax-positive cells were analyzed by flow cytometry (FCM) using the Flowcount (Coulter). The remaining cells were further cultured for 2~6 weeks with a change of media with or without antibody every 3~4 days. If necessary, cultures were split into 1:2 or 1:4.

The elimination of HTLV-1 antigen-expressing cells was tested as follows. The IL-2-dependent HTLV-1-infected T cell lines established from PBMCs of normal donors (2×10^5 cells/ml) were cocultured with autologous fresh PBMCs (2×10^6 cells/ml) in 20 U/ml IL-2-containing RPMI medium in triplicate in a round-bottom 96-well microtiter plate (BD) in the presence or absence of various antibodies. After initial coculture for 3 days, these cultures were split, and one was cultured in the presence and the other in the absence of fresh PBMCs and antibodies for 3 days. If necessary, these cells were further treated with antibodies and fresh PBMCs every 3 days. These cell cultures were periodically monitored for changes in the levels of Tax-expressing cells and levels of p24 production.

Flow cytometry (FCM) and enzyme-linked immunosorbent assay (ELISA)

For the detection of HTLV-1 antigen-expressing cells, sample cells were analyzed using polychromatic FCM. Briefly, live cells were Fc receptor-blocked with 2 mg/ml pooled normal human IgG in FACS buffer [phosphate-buffered saline (PBS) containing 0.2% bovine serum albumin (BSA) and 0.1% sodium azide] for 10 min on ice, and prestained with fluorescent dye-labeled mAbs for 30 min. After washing with FACS buffer, the cells were fixed in 4% paraformaldehyde (PFA) in PBS for 5 min at room temperature followed by permeabilization and washing in 0.5% saponin+1% BSA (Sigma) containing FACS buffer. The cells were incubated with 0.1 μ g/ml of Cy5-labeled anti-Tax antibody (clone Lt-4) for 30 min. Negative control cells were stained with Cy5-Lt-4 in the presence of 50 μ g/ml of unlabeled Lt-4. These cells were analyzed using a FACSCalibur (BD) and the data obtained were analyzed using the Cell Quest software (BD). Typical staining of HTLV-1-infected T cell lines with Lt-4 and LAT-27 is also shown in Supplementary Fig. S1 (Supplementary Data are available online at www.liebertpub.com/aid).

Production of HTLV-1 was determined by the measurement of the HTLV-1 core p24 antigen levels in the culture supernatants using our in-house formulated and standardized ELISA kit using a pair of anti-HTLV-1 p24 mAbs. The sensitivity of this assay was determined to be 0.5 ng/ml of p24 (data not shown).

ADCC assay

HTLV-1-immortalized target cells from healthy donors were labeled with ⁵¹Cr for 60 min as described previously³⁷ and mixed with varying ratios of fresh PBMCs (varying effector-to-target cell ratios) in the presence or absence of various antibodies for the indicated period of time in 20 U/ml IL-2-containing medium. Appropriate controls were included with each assay including target cells cultured in media alone (spontaneous release) and in 0.5 N HCl (100% release). After brief centrifugation, supernatants were harvested and ⁵¹Cr activity in each sample was determined using a gamma counter. The net percentage ⁵¹Cr release was calculated using standard methods as follows (cpm in experiment – cpm in medium)/(cpm in 0.5 N HCl – cpm in medium) \times 100. In some experiments, PBMCs were depleted of CD4⁺, CD8⁺, CD14⁺, CD16⁺, CD19⁺, or CD56⁺ cells using appropriately conjugated immunomagnetic beads and tested for their effector activity.

Statistical analysis

Data were tested for statistical significance by the Student's *t* test using Prism software (GraphPad Software).

Results

HTLV-1 neutralizing activities of LAT-27 and human anti-HTLV-1-IgG *in vitro*

The syncytium inhibition assay has been generally used to evaluate HTLV-1 neutralization titers of anti-HTLV-1

antibodies. To optimize the syncytium inhibition assay, we screened various coculture combinations of HTLV-1-producing cells with a variety of HTLV-1-negative target cells, and selected the HTLV-1-producing T cell line ILT-M1 and the HTLV-1-negative T cell line Jurkat. Overnight coculture of the ILT-M1 and Jurkat cells resulted in the generation of numerous large syncytia (Fig. 1). Using this assay system, we titrated the syncytia-blocking activity of monoclonal LAT-27 and polyclonal IgG purified from pooled plasma from HAM patients (HAM-IgG). HAM-IgG was used as a positive anti-HTLV-1 antibody control because it contained high titers of antibodies against HTLV-1 antigens (Supplementary Fig. S2). The minimum concentrations required for the "complete" inhibition of syncytia formation by LAT-27 and HAM-IgG antibodies were calculated to be 5 $\mu\text{g/ml}$ and 50 $\mu\text{g/ml}$, respectively (Supplementary Fig. S3). To adjust for decay in antibody activities during cultivation at 37°C, we used LAT-27 and HAM-IgG at concentrations of 10 and 100 $\mu\text{g/ml}$, respectively, in all subsequent experiments.

To confirm the gp46 specificity of LAT-27 and HAM-IgG in this syncytium inhibition assay, an affinity-column-purified gp46 antigen³⁶ was added to an aliquot of either LAT-27 or HAM-IgG solution prior to cocultivation. Controls consisted of incubating an aliquot of the cocultures in media alone (shaded bars denoted by 0) or media containing 10 $\mu\text{g/ml}$ of gp46 (dark bars also denoted by 0). As shown in Fig. 2, HAM-IgG incubated in media alone clearly inhibited syncytia formation in a dose-dependent manner (at 12.5 ~ 100 $\mu\text{g/ml}$). However, preincubation of the HAM-IgG at 12.5 ~ 100 $\mu\text{g/ml}$ with 10 $\mu\text{g/ml}$ of affinity-purified gp46 resulted in significant reversal of inhibition, suggesting that gp46 was the main target for the neutralization activity present in the human anti-HTLV-1 antibodies. Similar results were obtained when LAT-27 instead of HAM-IgG was preincubated with gp46 (data not shown).

LAT-27 as reported previously²⁹ and HAM-IgG completely inhibited HTLV-1-mediated T cell immortalization of

normal activated T cells *in vitro* at concentrations of 10 $\mu\text{g/ml}$ and 100 $\mu\text{g/ml}$, respectively (Fig. 3).

Effect of antibodies on spontaneous HTLV-1 antigen expression in vitro

To evaluate the role of anti-gp46 neutralizing antibodies against T cells carrying endogenous HTLV-1 from naturally infected donors, we cultured freshly isolated PBMCs from HAM/TSP patients in the presence or absence of various antibodies for 24 h. To exclude any potential effects of CD8⁺ CTL that are present within the PBMCs from the HAM/TSP patients,¹⁰ PBMCs were depleted of CD8⁺ T cells prior to the assay. For quantitation of the frequencies of HTLV-1 antigen-expressing cells, we stained an aliquot of the cells for the expression of intracellular Tax antigen utilizing our standardized anti-Tax mAb, which has generally been used to detect HTLV-1-infected cells.^{10,38} At a concentration of 10 $\mu\text{g/ml}$, LAT-27 reduced the frequency of Tax⁺ cells (Fig. 4A). This reduction was antigen and epitope specific since neither the isotype control rat IgG2b mAb (anti-HCV envelope) nor the anti-gp46 nonneutralizing mAb (LAT-25) and the other anti-gp46 nonneutralizing mAbs (clones LAT-12 and MET-3) that compete with LAT-27 in an antibody binding assay showed any detectable inhibitory effect (data not shown). The reduction in the frequency of Tax⁺ cells by LAT-27 was partially reversed by a mixture of anti-CD16 and anti-CD32 mAbs when added at the initiation of the assay, suggesting an involvement of Fc receptors in this reduction assay.

As shown in Fig. 4B, after prolonged culture (2 weeks) the suppressive effect of LAT-27 became more evident since there remained few if any Tax⁺ cells in the LAT-27-treated cultures of PBMCs from each of the HAM patients tested. A similar suppressive effect was observed for HAM-IgG but not normal human IgG (Fig. 4B). It should be noted that in the present culture conditions, similar to what has been generally observed for the PBMC cultures from HTLV-1-infected

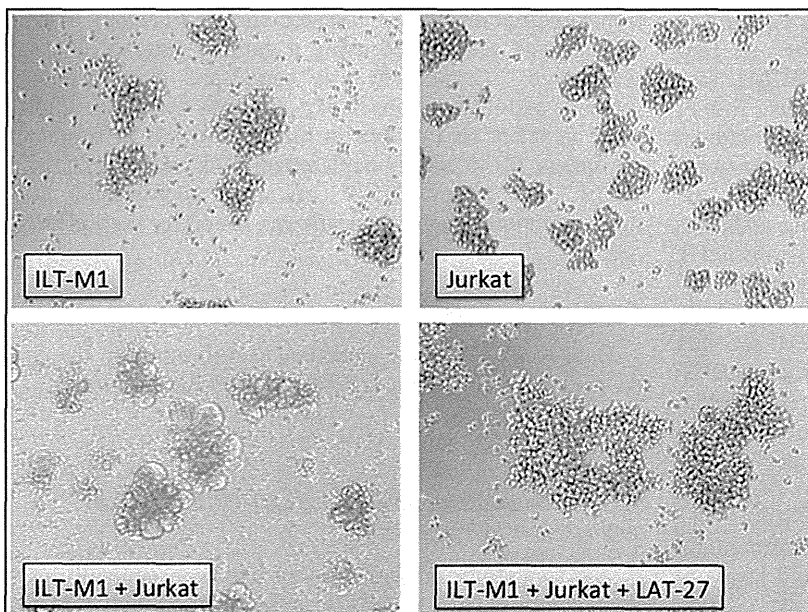


FIG. 1. Human T cell leukemia virus type-1 (HTLV-1)-mediated syncytia formation. HTLV-1⁺ ILT-M1 and HTLV-1⁻ Jurkat cells were either cultured alone or cocultured at a cell-to-cell ratio of 1:1 in the presence or absence of 10 $\mu\text{g/ml}$ LAT-27 for 18 h. Syncytia were microscopically observed using an inverted microscope at a magnification of 100 \times . Representative data from three independent experiments are shown.

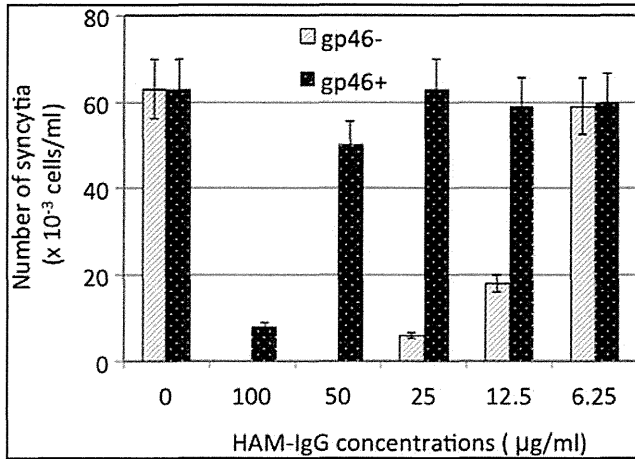


FIG. 2. Anti-gp46 antibodies are major HTLV-1 neutralizing antibodies in HAM-IgG. HAM-IgG at graded concentrations (0~100 µg/ml) was preincubated with either affinity-purified gp46 antigen (black bars) at 10 µg/ml for 10 min or incubated with medium alone (gray shaded bars, labeled as “gp46-”) and tested for syncytia inhibition activity. The numbers of syncytia were manually counted using a “Burker-Turk” hemocytometer. Representative data from three independent experiments are shown.

donors, the frequency of Tax⁺ cells gradually decreased during 2 weeks in culture even in IL-2 medium alone and thus it was not likely due to an effect of the addition of the control rat isotype IgG or normal IgG. Spontaneous immortalization of T cells by HTLV-1 was observed in the PBMC cultures from two-thirds of the HAM patients treated with medium

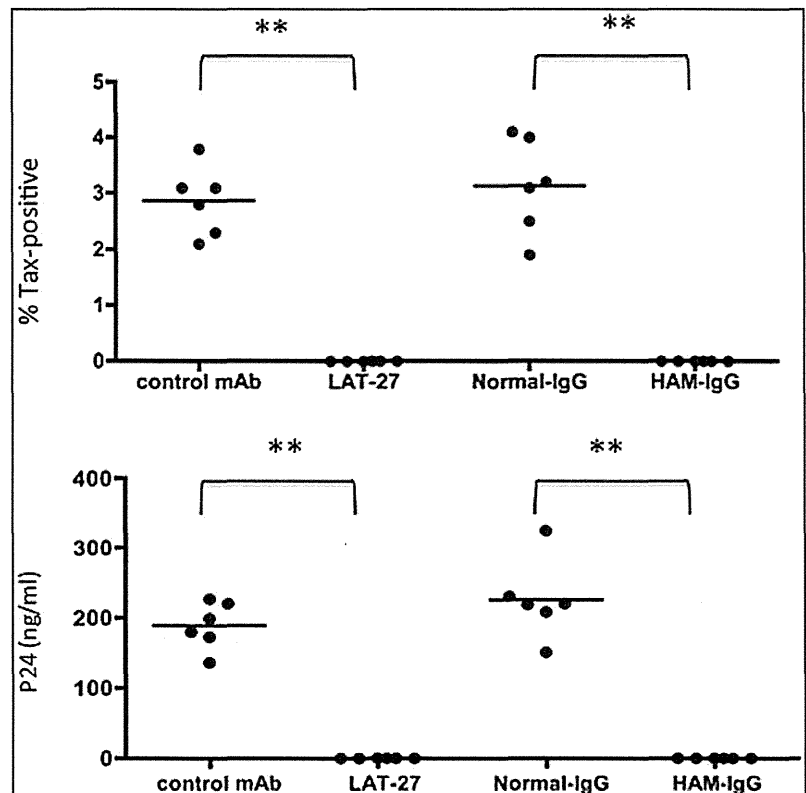
alone, isotype control, or normal IgG, but not in those treated with LAT-27 or HAM-IgG, as judged 6 weeks after culture (data not shown).

Importantly, neither LAT-27 nor HAM-IgG (data not shown) showed any detectable blocking effects on HTLV-1 Tax expression (Fig. 5) and p24 antigen production (data not shown) in long-term cultured HTLV-1-infected cell lines. It is known that the levels of Tax-positive cells vary depending on the cell lines being utilized due to DNA methylation, hypacetylation of histones, or epigenetic changes of provirus.³⁹ Thus, we reasoned that the addition of the neutralizing antibodies blocks *de novo* expansion of HTLV-1 infection and/or eliminates the HTLV-1 gp46 expressing T cells via an FcR-dependent pathway in combination with effector cells contained within the PBMCs.

FcR-dependent elimination of HTLV-1-infected cells by antibodies

Due to the limitations on the availability of PBMC samples from HAM/TSP patients, we established a number of IL-2-dependent HTLV-1-infected CD4⁺ T cell lines from PBMCs of normal donors to determine whether ADCC was involved in the suppression of HTLV-1-infected cells. These HTLV-1⁺ CD4⁺ T cell lines were cocultured with autologous fresh PBMCs in the presence or absence of various antibodies including F(ab')₂ of LAT-27, which showed HTLV-1 neutralization at a minimum concentration of 2.5 µg/ml (data not shown). HAM-IgG was included as an ADCC-positive control. After 3 days in culture, these cells were stained for cell surface CD4 and intracellular Tax antigen, and analyzed on a gated population of cells that displayed high forward and side scatters, which included a majority of the HTLV-1-infected

FIG. 3. LAT-27 and HAM-IgG completely block HTLV-1-mediated T cell immortalization *in vitro*. Activated peripheral blood mononuclear cells (PBMCs) from normal donors were seeded into six wells of 96-well U-bottom plates (1×10^5 cells/0.1 ml/well) and cocultured with an equal number of mitomycin C-treated ILT-M1 cells in the presence or absence of 10 µg/ml of LAT-27 or rat isotype control, 100 µg/ml of normal human IgG, or HAM-IgG. Half of the medium was replaced every 3~5 days with new similar fresh media, and if necessary, cultures were split into 1:2. Each data point reflects the frequency of Tax⁺ cells or the levels of p24 in the culture supernatants of each well 6 weeks after culture. Data shown are representative of three independent experiments. The differences between the controls and the experimental data were highly significant, denoted as ** $p < 0.01$. The negative control used for LAT-27 was an isotype control (rat IgG2b anti-HCV).



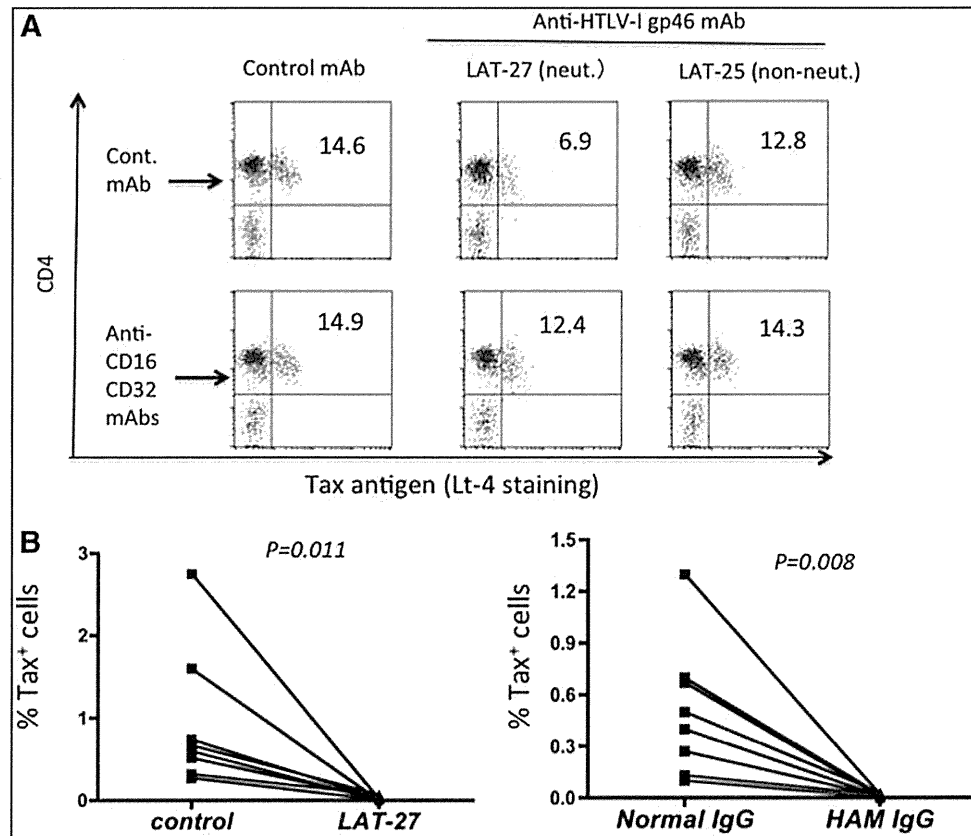


FIG. 4. Reduction of Tax-expressing cells in *in vitro* cultures of PBMCs from HAM patients in the presence of HTLV-1 neutralizing monoclonal antibody (mAb). **(A)** PBMCs from HAM patients were depleted of CD8⁺ T cells and cultured *in vitro* for 24 h at 1×10^6 cells/ml in interleukin (IL)-2-containing medium in the presence or absence of 10 $\mu\text{g/ml}$ antibodies indicated in the figure. The cells were then stained for cell surface CD4 and intracellular Tax antigen as described in the Materials and Methods section. The numbers in each dot-plot show the percentage of CD4⁺ Tax⁺ cells. The mixture of antibodies against human Fc receptors (FcR) (anti-CD16 and CD32) was added to block FcR function. Data shown are representative of three independent experiments using PBMCs from different donors. **(B)** PBMCs from HAM patients ($n=8$) were depleted of CD8⁺ T cells and cultured *in vitro* in IL-2-containing medium in the presence of (1) LAT-27 or an isotype control mAb at 10 $\mu\text{g/ml}$ or (2) HAM-IgG or normal human IgG at 100 $\mu\text{g/ml}$ for 2 weeks. The cells were stained for Tax antigen and the total percentage of Tax⁺ cells was calculated. The control used for LAT-27 was an isotype control (rat IgG2b anti-HCV mAb). The negative control mAb for anti-CD16 and CD32 was mouse IgG1 against HIV-1 (clone 2C2).

CD4⁺ T cells but not normal PBMCs. However, no detectable reduction of Tax⁺ cells was observed in the cultures treated with either LAT-27 or HAM-IgG cocultured in the presence of PBMCs (data not shown). Thus, these cells were washed and cocultured again for an additional 3 days with the same antibodies and fresh PBMCs.

As shown in Fig. 6A, although fresh PBMCs alone reduced the frequency of Tax⁺ cells to some extent, a marked net reduction was seen in the presence of LAT-27 and HAM-IgG. In a similar fashion, the production of HTLV-1 p24 in the culture supernatants was markedly reduced by LAT-27 and HAM-IgG in the presence of autologous PBMCs. As shown in Fig. 6B, when these cultures were exposed one more time to the same antibodies and fresh PBMCs, LAT-27 IgG and HAM-IgG, but not F(ab')₂ of LAT-27 or normal IgG, further reduced the frequency of Tax⁺ cells. These data suggest that the addition of LAT-27 as well as HAM-IgG eliminates the HTLV-1 gp46 antigen-expressing cells via an FcR-dependent manner while blocking the spread of HTLV-1 to new target cells including fresh PBMCs in the same cell cultures *in vitro*. The involvement of complement-dependent

cytotoxicity was ruled out because the fetal calf serum used in the present study was heat inactivated prior to use.

ADCC against HTLV-1-infected cells by LAT-27

To examine whether LAT-27 could mediate ADCC in the present culture conditions, IL-2-dependent HTLV-1-infected T cells established from normal donors were labeled with ⁵¹Cr and cocultured with fresh autologous PBMCs in the presence or absence of antibodies. Significant ADCC activity was induced by HAM-IgG, but not LAT-27, by 6 h (data not shown). However, after 24 h at a high effector-to-target cell ratio, LAT-27, but not the F(ab')₂ fragment of LAT-27, showed significant cytotoxicity ($p < 0.01$) (Fig. 7A). When the effector PBMCs were depleted of either CD16⁺ or CD56⁺ cells, but not CD14⁺ or CD19⁺ cells, the ADCC activity mediated by either LAT-27 or HAM-IgG was significantly reduced ($p < 0.01$) (Fig. 7B and C). These data suggest that the CD16⁺ CD56⁺ subpopulation of PBMCs [representing natural killer (NK) cells] were most likely the main effector cells involved in the cell lysis. These results

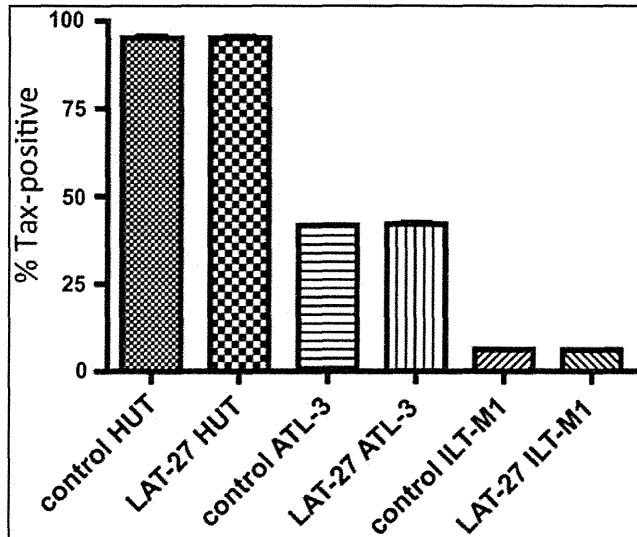


FIG. 5. LAT-27 alone does not affect long-term cultured HTLV-1-infected T cells. A standard HTLV-1-infected cell line HUT-102 (HUT), an IL-2-dependent CD4⁺ T cell line (ATL-3, generated from an ATL patient), and an IL-2-dependent CD8⁺ T cell line (ILT-M1) were cultured in the presence of 10 μ g/ml of either LAT-27 or isotype control (control) for 4 days, and the frequencies of Tax⁺ cells were determined by flow cytometry ($n=3$).

demonstrate that the monoclonal LAT-27, similar to the polyclonal HAM-IgG, is able to induce ADCC against HTLV-1-infected cells by autologous NK cells while protecting the spread of new infection with HTLV-1.

Discussion

The present study demonstrates that the monoclonal anti-HTLV-1 gp46 antibody clone LAT-27 generated by our laboratory mediates both HTLV-1 neutralization and HTLV-1-specific ADCC, and such ADCC activity might be capable of eliminating HTLV-1-infected T cells *in vitro* in the presence of autologous fresh PBMCs. Although fresh PBMCs alone showed a partial but significant inhibitory activity against HTLV-1-infected cells during prolonged *in vitro* cultivation, the data obtained here suggest that the HTLV-1-specific ADCC activity is the direct mechanism for this eradication. Similar suppressive activities were demonstrated for human IgG from HAM patients. This mechanism may explain the previous findings reported by Tochikura *et al.*²⁸ on the HTLV-1 suppressing activity of human anti-HTLV-1 antibodies. Furthermore, this mechanism may also explain in part why HTLV-1 antigen-expressing cells are not found *in vivo* in anti-HTLV-1 antibody-positive individuals. Although it is not known where and when HTLV-1 is produced *in vivo* in the infected individual, the continued presence of CD8⁺ T cells and antibodies specific for HTLV-1 indicates that HTLV-1 should be expressed periodically. Based on the results presented in this article, it might be possible that HTLV-1 expression occurs upon T cell stimulation in the periphery, but as soon as the cells express HTLV-1 gp46 antigen they might be instantly killed by the combination of anti-HTLV-1 ADCC-inducing antibodies and activated NK cells.

We submit that the addition of fresh PBMCs to the autologous HTLV-1-producing T cell cultures may result in it becoming readily infected and immortalized by HTLV-1. Thus, it is clear that the presence of neutralizing antibody is essential for the prevention of new infection of PBMCs and since ADCC effector mechanisms are functional during this time period, their contribution to the control of infection deserves merit. Interestingly, the ADCC induced by LAT-27 progressed slowly and the elimination of Tax⁺ cells became evident only after two consecutive exposures every 3 days in the present cell culture conditions. Since there was heterogeneity of the intensity of gp46 expression among cells in a single HTLV-1-infected cell line (data not shown), the findings suggest that the lysis of such gp46^{low} cells by ADCC requires a prolonged incubation period. Alternatively, since the repeated exposure against PBMCs resulted in an accumulation of live PBMCs, it is possible that a large number of effector fresh PBMCs might be required for the complete eradication by LAT-27, possibly due to the relatively low affinity of LAT-27 for human FcR.

Cell depletion experiments in the present study showed that the effector cells involved in the HTLV-1-specific ADCC in fresh PBMCs were either CD16⁺ or CD56⁺ cells, representing the cytolytic human NK cell subset, although it remains to be confirmed with purified NK cells. Because there are abundant circulating NK cells in the periphery in healthy donors, these findings strongly suggest that the HTLV-1-specific ADCC responses in the presence of neutralizing antibodies might have a role in controlling HTLV-1 *in vivo* in concert with HTLV-1-specific CTL responses in healthy HTLV-1 carriers. This view is supported by the findings that the ADCC effector function of PBMCs is lower in both HAM/TSP and ATL patients than healthy HTLV-1 carriers or normal donors,^{17,40} suggesting that defects in functional ADCC activities may contribute to the onset of HTLV-1-related diseases.

The level of ADCC of HTLV-1⁺ cells by LAT-27 was weaker than that induced by human polyclonal anti-HTLV-1 IgG. This might be due to the fact that LAT-27 is of rat origin and recognizes a single epitope on the gp46 (amino acids 191–196)²⁹ in contrast to the fact that HAM-IgG is of human origin and consists of high titers of polyclonal antibodies against multiple epitopes on gp46. In addition, it has been shown that mouse and rat IgG exhibit different ADCC activities with human NK cells depending on their subclasses, and that rat IgG2b (the subclass of LAT-27), but not IgG2a, triggers effective ADCC with human NK cells.⁴¹ Along these lines, it is possible that a humanized form of LAT-27 utilizing the human IgG1- or IgG3-Fc portion as a backbone would be far more effective than even the rat IgG2b of LAT-27.

This hypothesis has been confirmed by preliminary experiments using humanized LAT-27 consisting of human IgG1, which was generated in collaboration with Dr. Shimizu of IBL Inc. (Tanaka *et al.*, unpublished observations). In addition, epitope specificity and/or the affinity of anti-gp46 antibodies may also be involved in determining the ADCC-inducing activities. For example, LAT-25, which belongs to the rat IgG2b subclass and recognizes a C-terminal region of the gp46, did not eradicate HTLV-1⁺ cells (Fig. 7). Similarly, Kuroki *et al.* showed that a human mAb recognizing gp46 amino acids 191–196 (similar to the epitope recognized by LAT-27) could induce ADCC, but another human mAb

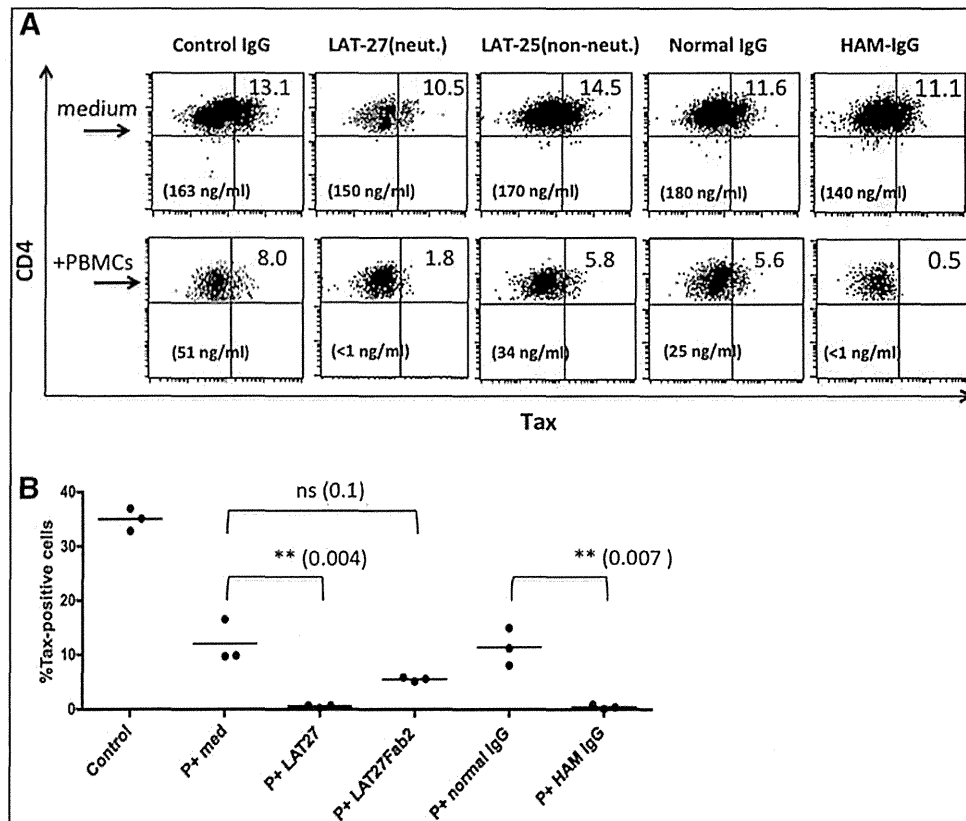


FIG. 6. Elimination of Tax⁺ cells and reduction of HTLV-1 p24 production in IL-2-dependent HTLV-1-infected T cells cocultured with autologous PBMCs in the presence of LAT-27 or HAM-IgG. **(A)** IL-2-dependent CD4⁺ HTLV-1-infected T cells established from the PBMCs of normal donors were repeatedly exposed to autologous PBMCs (+PBMCs) in the presence of 10 μ g/ml of LAT-27 or isotype control, or 100 μ g/ml of HAM-IgG, or normal human IgG twice at 3 day intervals. Two days after the second exposure, the high forward and side scatter gated populations of cells that contained a majority of the HTLV-1⁺ cells but not PBMCs were analyzed for the frequencies of CD4⁺ Tax⁺ cells. Percentages of CD4⁺ Tax⁺ cells are shown in the upper right quadrant. The numbers in parentheses show the levels of HTLV-1 p24 produced in the culture supernatants. Data shown are representative of three independent experiments using PBMCs from different donors. **(B)** As shown in **(A)**, IL-2-dependent CD4⁺ HTLV-1-infected T cells were cultured *in vitro* either alone (control) or exposed to autologous PBMCs (P+) in the presence of 10 μ g/ml of LAT-27 or F(ab')₂ LAT-27, or 100 μ g/ml of normal human or HAM-IgG in triplicate wells with three supplementations provided at 3 day intervals. Two days after the third exposure, the cells were examined for the frequencies of CD4⁺ Tax⁺ cells. Data shown are representative of three independent experiments using HTLV-1-infected cells and PBMCs from different donors.

recognizing the gp46 amino acids 187–193 could not, even though the two mAbs bind similarly to the cell surface of HTLV-1-infected cells and belong to the ADCC-inducing human IgG1.²²

It remains to be determined whether there are clonal populations of human IgGs that can mediate both the neutralization and ADCC against HTLV-1. So far, it has been shown that the two activities could be operating separately by different epitope-specific human mAbs against gp46.²² Recently, Kuo *et al.*²⁴ showed that both neutralizing and non-neutralizing mouse anti-gp46 mAbs can activate neutrophils and mediate its burst activity in the presence of an HTLV-1-infected MT-2 cell line, and concluded that HTLV-1-specific ADCC capacity is not coupled to the neutralizing capacity of the antibody. Thus, these articles highlight the finding of LAT-27 as a special antibody. Analyses of the conformational and antigenic structure of gp46 expressed on the cell surface will be necessary to address this issue further.

Another possible target for ADCC on HTLV-1-expressing cells is the envelope gp21; however, it has been unclear

whether human anti-gp21 antibodies function in ADCC. In addition, the recent finding that the glycosylation of Fc-IgG plays an important role in anti-HIV-1 ADCC effector mechanisms⁴² suggests that this issue needs to also be considered in the evaluation of anti-HTLV-1 gp46 antibodies and for vaccine formulations in general. Nevertheless, it is clear that the simultaneous operation of neutralization and ADCC by single or polyclonal antibodies is essential to recognize and eliminate HTLV-1⁺ cells since not only T cells but also the NK cells are permissive to HTLV-1 infection.⁴³

The present study also showed that fresh PBMCs had a partial and significant but not complete suppressive activity against autologous HTLV-1-infected cells in the absence of anti-HTLV-1 antibodies. Our preliminary experiments indicate that monocytes might be involved in this partial suppression because PBMCs depleted of CD14⁺ cells, but not of NK cells, were no longer suppressive in the absence of LAT-27 (data not shown). Since HTLV-1-infected T cells are continuously activated due to the Tax antigen, one possible mechanism is a monocyte-dependent cell death (MDCD)