

Fig. 4. Augmentation of NY-ESO-1-specific CD8⁺ T-cell induction in melanoma patients by in vitro CCR4⁺ T-cell depletion. (A) Induction of NY-ESO-1-specific CD8⁺ T cells. Unfractionated PBMCs, or PBMCs depleted of CD25⁺ or CCR4⁺ cells, were prepared from melanoma patients (*n* = 6), and presented in peptides capable of binding to patients' HLA. NY-ESO-1-specific CD8⁺ T cells were analyzed with NY-ESO-1/HLA tetramers (Pt. #9: A*02/29, B*44/27, C*03/04, Pt. #10: A*02/11, B*35/44, C*04/05, and Pt. #11: A*02/-, B*13/18, C*06/07). (B) Cytokine secretion of NY-ESO-1-specific CD8⁺ T cells upon recognition of the HLA-A*0201⁺ melanoma cell line SK-MEL 37 (NY-ESO-1⁺), or SK-MEL-21 (NY-ESO-1⁻) analyzed by intracellular cytokine staining. Data from three representative patients are shown. (C) Induction of antigen-specific CD8⁺ T cells by addition (add) of anti-CD25 or anti-CCR4 mAb (KM2160) to cell cultures, or by CCR4⁺ or CD25⁺ cell depletion or nondepletion, as shown in A (Pt. #13 A02/03, B07/41, C07/17). A representative result (Left) and summary of three melanoma patients (Right) are shown. The numbers in the panels indicate the percentage of gated CD8⁺ T cells. These experiments were performed independently at least twice with similar results.

Interestingly, although NY-ESO-1-specific CD8⁺ T-cell induction was augmented in the cell culture containing anti-CCR4 mAb, the addition of anti-CD25 mAb reduced the frequency of NY-ESO-1-specific CD8⁺ T cells (Fig. 4C), indicating that it might have killed some CD25⁺CD8⁺ activated effector T cells in addition to CD25⁺CD4⁺ Treg cells.

These results indicate that depletion of CCR4⁺ T cells before in vitro induction or even simple incubation with anti-CCR4 mAb during the induction effectively augments NY-ESO-1-specific CD8⁺ T-cell responses by selectively reducing eTreg cells.

Anti-CCR4 mAb Administration into Adult T-Cell Leukemia-Lymphoma Patients Reduces CD4⁺FOXP3^{hi}CD45RA⁻ eTreg Cells and Augments NY-ESO-1-Specific CD8⁺ T-Cell Responses. In adult T-cell leukemia-lymphoma (ATL), which is caused by human T-lymphotropic virus 1 infection, ATL cells are CD4⁺ and the majority—if not all—of them express FOXP3, CD25, CTLA-4, and CCR4, thus resembling naturally occurring FOXP3⁺ Treg cells (25–28). Although it is currently difficult to discriminate whether anti-CCR4 mAb reduces ATL cells or normal FOXP3⁺ Treg cells (29), we examined whether in vivo administration of anti-CCR4 mAb (Mogamulizumab), which has a cell-depleting effect by antibody-dependent cellular cytotoxicity, was able to reduce FOXP3⁺ cells or a subpopulation thereof. Analysis of PBMCs from ATL patients collected before and after anti-CCR4 mAb therapy revealed that CD4⁺FOXP3^{hi}CD45RA⁻ cells including both ATL cells and eTreg cells were markedly reduced after the therapy (Fig. 5A). In addition, in a patient whose ATL cells expressed NY-ESO-1, NY-ESO-1-specific CD8⁺ T cells producing IFN- γ and TNF- α were induced after several rounds of anti-CCR4 mAb administration (Fig. 5B). NY-ESO-1-specific CD8⁺ T cells producing these cytokines were much higher in frequency than NY-ESO-1-specific CD8⁺ T cells detected by NY-ESO-1/HLA-B*3501 tetramers, suggesting that this patient additionally possessed CD8⁺ T cells recognizing other epitopes of NY-ESO-1. These results collectively indicate that anti-CCR4 mAb therapy for ATL is able to selectively deplete eTreg cells as well as ATL cells in vivo, and induce/augment tumor antigen-specific T-cell responses, although it is possible that anti-CCR4 mAb-induced reduction of FOXP3⁺ ATL cells, which reportedly

exhibit a Treg-cell-like in vitro suppressive activity (27, 28), might also contribute to the augmentation of immune responses.

Discussion

Accumulating evidence indicates that effective cancer immunotherapy needs to control FOXP3⁺ Treg cells naturally present in the immune system and abundantly infiltrating into tumor tissues (10, 11, 30). Here, we have shown that CD4⁺FOXP3^{hi}CD45RA⁻ eTreg cells, which are terminally differentiated and most suppressive, highly express CCR4, that they are predominant among FOXP3⁺ T cells infiltrating into tumor tissues (e.g., melanoma), and that specific depletion of eTreg cells in vivo or in vitro by anti-CCR4 mAb evoked tumor antigen-specific immune responses mediated by CD4⁺ and CD8⁺ T cells in healthy individuals and cancer patients.

Besides high expression of CCR4 in eTreg cells, CCR4 is expressed, although to a lesser extent, in non-Treg CD4⁺ T-cell fractions [i.e., the FOXP3^{lo}CD45RA⁻ cells (Fr. III) and FOXP3^{lo}CD45RA⁻ cells (Fr. IV)]. The former are capable of secreting cytokines, such as IL-4 and IL-17, as previously reported with PBMCs of healthy individuals (18). It has also been shown that Th2 cells and a fraction of central memory CD8⁺ T cells express CCR4 (31–33). It is thus likely that tumor-infiltrating activated macrophages, and presumably some tumor cells produce CCL22, which predominantly chemoattracts and recruits from peripheral blood both CCR4⁺ eTreg and CCR4⁺ effector T cells that recognize tumor-associated antigens (such as cancer/testis antigen) and presumably self-antigens released from tumor cells (6, 10, 21, 34). However, the frequency of IL-4- or IL-17-secreting CD4⁺ T cells were much lower than eTreg cells among CCR4⁺CD4⁺ T cells in PBMCs and TILs in melanoma tissues of nontreated patients; and CCR4 expression by CD8⁺ TILs were limited. Moreover, addition of anti-CCR4 mAb into in vitro peptide stimulation more effectively induced antigen-specific CD8⁺ T cells than CCR4⁺ T-cell depletion, indicating that anti-CCR4 mAb had reduced eTreg cells but spared CD8⁺ effector T cells. The result contrasted with the addition of anti-CD25 mAb, which appeared to deplete CD25⁺CD8⁺ T cells and cancel the enhancing effect of Treg-cell depletion. These results taken together indicate that anti-CCR4 mAb treatment to augment antitumor immunity mainly target CCR4⁺ eTreg cells

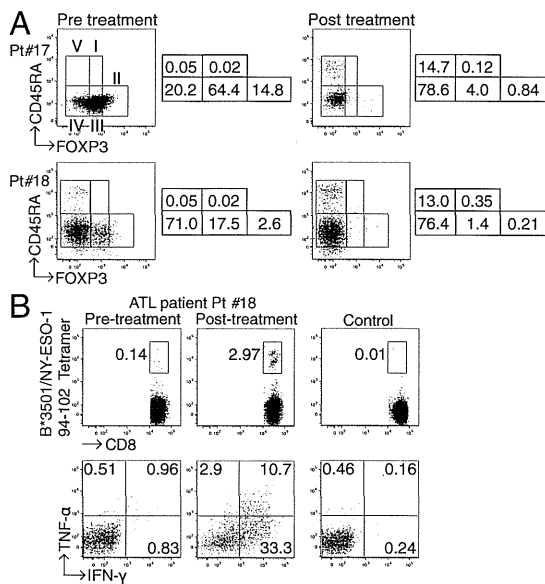


Fig. 5. Reduction of CD4⁺FOXP3^{hi}CD45RA⁻ T cells and augmentation of NY-ESO-1-specific CD8⁺ T-cell responses in ATL patients after anti-CCR4 mAb (Mogamulizumab) therapy. (A) FOXP3⁺ Treg-cell subpopulations in PBMCs from two ATL patients (Pt. #17: acute type, HLA-A*2402/-, B*3901/5401, C*0102/0702 and Pt. #18: lymphoma type, HLA-A*0201/3101, B*3501/4002, C*0303/0401) before and after anti-CCR4 mAb therapy. These experiments were performed at least twice with similar results. The numbers indicate the percentage of gated CD4⁺ T cells. (B) Analysis of NY-ESO-1-specific CD8⁺ T-cell induction before and after anti-CCR4 mAb therapy. PBMCs from Pt. #18 were presensitized in the presence of APCs pulsed with NY-ESO-1₉₁₋₁₁₀ peptide corresponding to the patient's HLA. NY-ESO-1-specific CD8⁺ T cells were detected with NY-ESO-1/HLA tetramers, and cytokine secretion of these NY-ESO-1-specific CD8⁺ T cells upon recognition of autologous activated T-cell APCs pulsed with NY-ESO-1₉₁₋₁₁₀ or control peptide was analyzed by intracellular cytokine staining. The numbers in figures indicate the percentage of gated CD8⁺ T cells. The result was derived from a single assay because of limited availability of the patient's samples.

in tumor tissues and the regional lymph nodes, as well as peripheral blood, which would otherwise be a reservoir of fresh tumor-infiltrating Treg cells. Further study is warranted to determine whether depletion of CCR4⁺CD4⁺ and CD8⁺ effector T cells in vivo affects antitumor immunity to a clinically significant extent.

Both NY-ESO-1-specific CD4⁺ and CD8⁺ T cells induced by in vitro anti-CCR4 mAb treatment possessed high-avidity T-cell receptors, and responded to dendritic cells processing tumor antigens and histocompatible tumor cell lines, respectively. This finding raises the issue of whether Treg depletion by anti-CCR4 mAb activates and expands already present antigen-primed effector T cells or newly induces effector T cells from a naive T-cell pool. We previously showed that in vitro NY-ESO-1-peptide stimulation following CD25⁺CD4⁺ T-cell depletion could activate NY-ESO-1-specific naive CD4⁺ T-cell precursors in healthy individuals and in melanoma patients who possessed NY-ESO-1-expressing tumors but failed to develop anti-NY-ESO-1 Ab (23). In contrast, most NY-ESO-1-specific CD4⁺ T cells in melanoma patients who had spontaneously developed anti-NY-ESO-1 Ab were derived from a memory population and could be activated even in the presence of CD25⁺CD4⁺ Treg cells (23). In addition, following vaccination of ovarian cancer patients with a HLA-DP-restricted NY-ESO-1 peptide, development of NY-ESO-1-specific high-avidity effector T cells from naive T cells was hampered by the presence of CD25⁺CD4⁺ Treg cells, although the vaccination could expand low-avidity NY-ESO-1-specific CD4⁺ T cells that were apparently present in an effector/memory fraction before the vaccination (24). These results collec-

tively indicate that elimination of eTreg cells by CCR4⁺ T-cell depletion abrogates Treg cell-mediated suppression on NY-ESO-1-specific high-avidity naive T-cell precursors, allowing their activation and differentiation into high-avidity effector T cells capable of mediating strong antitumor immune responses. This successful induction of tumor antigen-specific CD4⁺ and CD8⁺ T cells indicates that the combination of anti-CCR4 mAb administration and vaccination with tumor antigens, such as NY-ESO-1, could be an ideal strategy for immunotherapy of a variety of cancers including ATL, which express NY-ESO-1 (35).

On the other hand, it was noted that not all healthy individuals or melanoma patients developed NY-ESO-1-specific T cells in vitro after Treg depletion for several possible reasons. For example, individuals who do not have a proper HLA haplotype may fail to select NY-ESO-1-reactive T cells thymically (22), hence possessing few NY-ESO-1-specific T-cell precursors. Other types of suppressor cells (such as myeloid-derived suppressor cells, immunosuppressive macrophages, and Foxp3⁺ Treg cells) might contribute to inhibiting the induction of the responses (30). Alternatively, T cells specific for NY-ESO-1, a cancer/testis antigen, may also be subjected to other mechanisms of immunological self-tolerance—for example, anergy—hence being hyporesponsive to the antigen (36). These possibilities are under investigation to make anti-CCR4 mAb therapy more effective.

Would in vivo anti-CCR4 mAb treatment to deplete Treg cells elicit harmful autoimmunity? It has been shown in animal models that a longer period and a more profound degree of Treg-cell depletion is required to elicit clinically and histologically evident autoimmunity than evoking effective antitumor immunity (37, 38). In humans, naive Treg cells are generally well preserved in peripheral blood in cancer patients, even if they are low in frequency in tumor tissues. Furthermore, CCR4⁺ T-cell depletion selectively eliminates eTreg cells but spares naive Treg cells. Assuming that effective tumor immunity can be evoked without significant autoimmunity via controlling the degree and duration of Treg-cell depletion, it is likely that, although anti-CCR4 mAb administrations reduce eTreg cells in the immune system during the treatment, the residual CCR4⁻ eTreg cells (as shown in Fig. 2), including those which have newly differentiated from naive Treg cells, are sufficient to prevent deleterious autoimmunity. Supporting this notion, only a minor population of ATL patients treated with anti-CCR4 mAb experienced severe immune-related adverse events, except skin rashes (29). Anti-CCR4 mAb therapy can therefore be a unique cancer immunotherapy aiming at depleting eTreg cells without clinically serious adverse effects that would be incurred by total Treg-cell depletion or functional blockade (39).

The critical roles of CCR4 in Treg-cell recruitment to tumors have been reported with various types of human cancers, such as malignant lymphomas, gastric, ovarian, and breast cancers (10). CCR4⁺ eTreg cells abundantly and predominantly infiltrated into gastric and esophageal cancers as observed with melanoma. Although it remains to be determined whether every cancer tissue has predominant infiltration of CCR4⁺ eTreg cells, it is envisaged that possible combination of anti-CCR4 mAb treatment, tumor antigen immunization, and antibody-mediated immune checkpoint blockade will further increase clinical efficacy of cancer immunotherapy.

Materials and Methods

Donor Samples. PBMCs were obtained from healthy donors, malignant melanoma patients with NY-ESO-1 expression, and ATL patients. To collect tumor-infiltrating T cells, melanoma tissues were minced and treated with gentleMACS Dissociator (Miltenyi Biotec). All healthy donors were subjects with no history of autoimmune disease. All donors provided written informed consent before sampling according to the Declaration of Helsinki. The present study was approved by the institutional ethics committees of Osaka University, Osaka, Japan and Landesarzt-kammer Hessen, Frankfurt, Germany.

Antibodies and Peptides. The information of antibodies and synthetic peptides is provided in *SI Materials and Methods*.

Preparation of CD25⁻ or CCR4⁻ Cells. PBMCs or CD4⁺ T cells were treated with biotin-anti-CD25 mAb (BC96) or biotin-anti-CCR4 (1G1) mAb (0.01 mg/mL), otherwise specified, for 15 min at 4 °C. Subsequently, anti-Biotin MicroBeads (Miltenyi Biotec) were added as described in the manufacturer's protocol, then washed using PBS containing 2% (vol/vol) FCS. CD25⁻ or CCR4⁻ cells were separated on autoMACS Pro Separator (Miltenyi Biotec).

In Vitro Sensitization of NY-ESO-1-Specific CD4⁺ T Cells. NY-ESO-1-specific CD4⁺ T cells were presensitized as previously described (23, 24) and in *SI Materials and Methods*.

In Vitro Sensitization of NY-ESO-1-Specific CD8⁺ T Cells. For in vitro sensitization of NY-ESO-1-specific CD8⁺ T cells, 1.5–2 × 10⁶ cells were cultured with NY-ESO-1 peptides (NY-ESO-1_{157–165} for HLA-A*0201 restricted, NY-ESO-1_{92–100} for HLA-Cw*0304 restricted, NY-ESO-1_{91–110} for HLA-B*3501 restricted, 10 μM) (22, 23) in a 48-well dish or round-bottom 96-well plate. After 8 h, one-half of the medium was replaced by fresh medium containing IL-2 (20 U/mL) and IL-7 (40 ng/mL) and repeated twice per week. In some assays, purified anti-CD25 (M-A251) mAb or anti-CCR4 (KM2160) mAb (1 μg/mL) was included in some wells during the entire period of culture.

ELISpot Assay. The number of IFN-γ-secreting NY-ESO-1-specific CD4⁺ T cells was assessed by ELISpot assay as previously described (23, 24) and in *SI Materials and Methods*.

Intracellular Cytokine Secretion Assay. The presensitized CD4⁺ and CD8⁺ T cells were restimulated with peptide-pulsed autologous activated T-cell APCs, SK-MEL-21 cells (NY-ESO-1⁻, HLA-A*0201⁺), or SK-MEL-37 cells (NY-

ESO-1⁺, HLA-A*0201⁺) for 1 h, after which GolgiStop reagent (BD Biosciences) was added. Subsequently, cells were cultured for another 6–8 h at 37 °C. Cells were stained for cell surface markers and then for intracellular cytokines using BD Cytofix/Cytoperm Buffer and BD Perm/Wash Buffer (BD Biosciences). Results were analyzed by flow cytometry (BD LSRFortessa; BD Biosciences) and FlowJo v9.6.2 software (TreeStar).

Tetramer Assay. Tetramer staining was performed as previously described (35, 40) and in *SI Materials and Methods*.

Preparation of Dendritic Cells. Dendritic cells were prepared as previously described (24) and in *SI Materials and Methods*.

Statistical Analysis. The significance of the difference in each data between two groups was assessed by a Mann-Whitney test using Prism version 6 software (GraphPad). *P* values less than 0.05 were considered significant.

ACKNOWLEDGMENTS. We thank Drs. J. B. Wing and D. O. Adegebe for helpful discussion and critical reading of this manuscript, and Ms. Y. Tada, K. Teshima and Y. Funabiki for technical assistance. SK-MEL21 and SK-MEL37 were kindly provided by Dr. Lloyd J. Old; anti-CCR4 mAb (KM2160) was a generous gift from Kyowa Hakko Kirin Co., Ltd. This study was supported by Grants-in-Aid for Specially Promoted Research 20002007 (to S.S.) and for Scientific Research (B) 23300354 (to H.N.) from the Ministry of Education, Culture, Sports, Science, and Technology of Japan; Core Research for Evolutional Science and Technology from the Japan Science and Technology Agency (S.S.); Health and Labor Sciences Research Grants, Research on Applying Health Technology H24-Clinical Cancer Research-general-006 and H23-Third Term Comprehensive Control Research for Cancer-general-011 (to H.N.) from the Ministry of Health, Labor, and Welfare, Japan; a Cancer Research Institute Designated grant and CLIP grant (to H.N.); and a research grant from Kyowa Hakko Kirin Co., Ltd. (to H.N.).

1. Sakaguchi S (2004) Naturally arising CD4⁺ regulatory t cells for immunologic self-tolerance and negative control of immune responses. *Annu Rev Immunol* 22:531–562.
2. Sakaguchi S, Miyara M, Costantino CM, Hafler DA (2010) FOXP3⁺ regulatory T cells in the human immune system. *Nat Rev Immunol* 10(7):490–500.
3. Kawakami Y, Rosenberg SA (1997) Human tumor antigens recognized by T-cells. *Immunol Res* 16(4):313–339.
4. Scanlan MJ, Gure AO, Jungbluth AA, Old LJ, Chen YT (2002) Cancer/testis antigens: An expanding family of targets for cancer immunotherapy. *Immunol Rev* 188:22–32.
5. Boon T, Coulie PG, Van den Eynde BJ, van der Bruggen P (2006) Human T cell responses against melanoma. *Annu Rev Immunol* 24:175–208.
6. Curiel TJ, et al. (2004) Specific recruitment of regulatory T cells in ovarian carcinoma fosters immune privilege and predicts reduced survival. *Nat Med* 10(9):942–949.
7. Sato E, et al. (2005) Intraepithelial CD8⁺ tumor-infiltrating lymphocytes and a high CD8⁺/regulatory T cell ratio are associated with favorable prognosis in ovarian cancer. *Proc Natl Acad Sci USA* 102(51):18538–18543.
8. Yamaguchi T, et al. (2007) Control of immune responses by antigen-specific regulatory T cells expressing the folate receptor. *Immunity* 27(1):145–159.
9. Mitsui J, et al. (2010) Two distinct mechanisms of augmented antitumor activity by modulation of immunostimulatory/inhibitory signals. *Clin Cancer Res* 16(10):2781–2791.
10. Nishikawa H, Sakaguchi S (2010) Regulatory T cells in tumor immunity. *Int J Cancer* 127(4):759–767.
11. Dougan M, Dranoff G (2009) Immune therapy for cancer. *Annu Rev Immunol* 27:83–117.
12. Dannull J, et al. (2005) Enhancement of vaccine-mediated antitumor immunity in cancer patients after depletion of regulatory T cells. *J Clin Invest* 115(12):3623–3633.
13. Rech AJ, et al. (2012) CD25 blockade depletes and selectively reprograms regulatory T cells in concert with immunotherapy in cancer patients. *Sci Transl Med* 4(134):134ra162.
14. Attia P, Maker AV, Haworth LR, Rogers-Freezer L, Rosenberg SA (2005) Inability of a fusion protein of IL-2 and diphtheria toxin (Denileukin Diftitox, DAB389IL-2, ONTAK) to eliminate regulatory T lymphocytes in patients with melanoma. *J Immunother* 28(6):582–592.
15. Litzinger MT, et al. (2007) IL-2 immunotoxin denileukin diftixox reduces regulatory T cells and enhances vaccine-mediated T-cell immunity. *Blood* 110(9):3192–3201.
16. Sakaguchi S, Sakaguchi N, Asano M, Itoh M, Toda M (1995) Immunologic self-tolerance maintained by activated T cells expressing IL-2 receptor α-chains (CD25). Breakdown of a single mechanism of self-tolerance causes various autoimmune diseases. *J Immunol* 155(3):1151–1164.
17. Kim JM, Rasmussen JP, Rudensky AY (2007) Regulatory T cells prevent catastrophic autoimmunity throughout the lifespan of mice. *Nat Immunol* 8(2):191–197.
18. Miyara M, et al. (2009) Functional delineation and differentiation dynamics of human CD4⁺ T cells expressing the FoxP3 transcription factor. *Immunity* 30(6):899–911.
19. Campbell DJ, Koch MA (2011) Phenotypic and functional specialization of FOXP3⁺ regulatory T cells. *Nat Rev Immunol* 11(2):119–130.
20. Ishida T, Ueda R (2006) CCR4 as a novel molecular target for immunotherapy of cancer. *Cancer Sci* 97(11):1139–1146.
21. Bonertz A, et al. (2009) Antigen-specific Tregs control T cell responses against a limited repertoire of tumor antigens in patients with colorectal carcinoma. *J Clin Invest* 119(11):3311–3321.
22. Gnjatich S, et al. (2006) NY-ESO-1: Review of an immunogenic tumor antigen. *Adv Cancer Res* 95:1–30.
23. Nishikawa H, Jäger E, Ritter G, Old LJ, Gnjatich S (2005) CD4⁺ CD25⁺ regulatory T cells control the induction of antigen-specific CD4⁺ helper T cell responses in cancer patients. *Blood* 106(3):1008–1011.
24. Nishikawa H, et al. (2006) Influence of CD4⁺CD25⁺ regulatory T cells on low/high-avidity CD4⁺ T cells following peptide vaccination. *J Immunol* 176(10):6340–6346.
25. Yoshie O, et al. (2002) Frequent expression of CCR4 in adult T-cell leukemia and human T-cell leukemia virus type 1-transformed T cells. *Blood* 99(5):1505–1511.
26. Ishida T, et al. (2003) Clinical significance of CCR4 expression in adult T-cell leukemia/lymphoma: Its close association with skin involvement and unfavorable outcome. *Clin Cancer Res* 9(10 Pt 1):3625–3634.
27. Matsubara Y, Hori T, Morita R, Sakaguchi S, Uchiyama T (2005) Phenotypic and functional relationship between adult T-cell leukemia cells and regulatory T cells. *Leukemia* 19(3):482–483.
28. Matsuoka M, Jeang KT (2007) Human T-cell leukemia virus type 1 (HTLV-1) infectivity and cellular transformation. *Nat Rev Cancer* 7(4):270–280.
29. Ishida T, et al. (2012) Defucosylated anti-CCR4 monoclonal antibody (KW-0761) for relapsed adult T-cell leukemia-lymphoma: A multicenter phase II study. *J Clin Oncol* 30(8):837–842.
30. Zou W (2006) Regulatory T cells, tumour immunity and immunotherapy. *Nat Rev Immunol* 6(4):295–307.
31. Imai T, et al. (1999) Selective recruitment of CCR4-bearing Th2 cells toward antigen-presenting cells by the CC chemokines thymus and activation-regulated chemokine and macrophage-derived chemokine. *Int Immunol* 11(1):81–88.
32. Lim HW, Lee J, Hillsamer P, Kim CH (2008) Human Th17 cells share major trafficking receptors with both polarized effector T cells and FOXP3⁺ regulatory T cells. *J Immunol* 180(1):122–129.
33. Kondo T, Takiguchi M (2009) Human memory CCR4⁺CD8⁺ T cell subset has the ability to produce multiple cytokines. *Int Immunol* 21(5):523–532.
34. Nishikawa H, et al. (2005) Definition of target antigens for naturally occurring CD4⁺CD25⁺ regulatory T cells. *J Exp Med* 201(5):681–686.
35. Nishikawa H, et al. (2012) Cancer/testis antigens are novel targets of immunotherapy for adult T-cell leukemia/lymphoma. *Blood* 119(13):3097–3104.
36. Chappert P, Schwartz RH (2010) Induction of T cell anergy: Integration of environmental cues and infectious tolerance. *Curr Opin Immunol* 22(5):552–559.
37. Shimizu J, Yamazaki S, Sakaguchi S (1999) Induction of tumor immunity by removing CD25⁺CD4⁺ T cells: A common basis between tumor immunity and autoimmunity. *J Immunol* 163(10):5211–5218.
38. Ko K, et al. (2005) Treatment of advanced tumors with agonistic anti-GITR mAb and its effects on tumor-infiltrating Foxp3⁺CD25⁺CD4⁺ regulatory T cells. *J Exp Med* 202(7):885–891.
39. Sharma P, Wagner K, Wolchok JD, Allison JP (2011) Novel cancer immunotherapy agents with survival benefit: Recent successes and next steps. *Nat Rev Cancer* 11(11):805–812.
40. Nishikawa H, et al. (2006) In vivo antigen delivery by a *Salmonella typhimurium* type III secretion system for therapeutic cancer vaccines. *J Clin Invest* 116(7):1946–1954.

Impact of Graft-versus-Host Disease on Allogeneic Hematopoietic Cell Transplantation for Adult T Cell Leukemia-Lymphoma Focusing on Preconditioning Regimens: Nationwide Retrospective Study



Takashi Ishida^{1,*}, Masakatsu Hishizawa², Koji Kato³, Ryuji Tanosaki⁴, Takahiro Fukuda⁵, Yoshifusa Takatsuka⁶, Tetsuya Eto⁷, Yasushi Miyazaki⁸, Michihiro Hidaka⁹, Naokuni Uike¹⁰, Toshihiro Miyamoto³, Mitsuru Tsudo¹¹, Hisashi Sakamaki¹², Yasuo Morishima¹³, Ritsuro Suzuki¹⁴, Atae Utsunomiya⁶

¹ Department of Medical Oncology and Immunology, Nagoya City University Graduate School of Medical Sciences, Nagoya, Japan

² Department of Hematology and Oncology, Graduate School of Medicine, Kyoto University, Kyoto, Japan

³ Department of Medicine and Biosystemic Science, Kyushu University, Fukuoka, Japan

⁴ Department of Blood Transfusion and Cellular Therapy, National Cancer Center Hospital, Tokyo, Japan

⁵ Division of Hematopoietic Stem Cell Transplantation, National Cancer Center Hospital, Tokyo, Japan

⁶ Department of Hematology, Imamura Bun-in Hospital, Kagoshima, Japan

⁷ Department of Hematology, Hamanomachi Hospital, Fukuoka, Japan

⁸ Department of Hematology, Nagasaki University Graduate School of Biomedical Sciences, Nagasaki, Japan

⁹ Department of Hematology, National Hospital Organization Kumamoto Medical Center, Kumamoto, Japan

¹⁰ Department of Hematology, National Kyushu Cancer Center, Fukuoka, Japan

¹¹ Department of Hematology, Osaka Red Cross Hospital, Osaka, Japan

¹² Tokyo Metropolitan Cancer and Infectious Disease Center, Komagome Hospital, Tokyo, Japan

¹³ Division of Epidemiology and Prevention, Aichi Cancer Center Research Institute, Nagoya, Japan

¹⁴ Department of Hematopoietic Stem Cell Transplantation Data Management/Biostatistics, Nagoya University, Nagoya, Japan

Article history:

Received 8 August 2013

Accepted 23 September 2013

Key Words:

HTLV-1

ATL-related mortality

TRM

Mogamulizumab

ABSTRACT

Allogeneic hematopoietic cell transplantation (HCT), but not autologous HCT, can provide long-term remission in some patients with adult T cell leukemia-lymphoma (ATL). We retrospectively analyzed the effects of acute graft-versus-host disease (GVHD) among the 616 patients with ATL who survived at least 30 days after allogeneic HCT with other than cord blood grafts. Multivariate analyses treating the occurrence of GVHD as a time-varying covariate demonstrated an association between grade I-II acute GVHD and favorable overall survival (OS) (hazard ratio [HR], 0.634; 95% confidence interval [CI], 0.477 to 0.843), whereas grade III-IV acute GVHD showed a trend toward unfavorable OS (HR, 1.380; 95% CI, 0.988 to 1.927) compared with nonacute GVHD. In subsequent multivariate analyses of patients who survived at least 100 days after HCT (n = 431), the presence of limited chronic GVHD showed a trend toward favorable OS (HR, 0.597; 95% CI, 0.354 to 1.007), and extensive chronic GVHD had a significant effect on OS (HR, 0.585; 95% CI, 0.389 to 0.880). There were no significant interactions between myeloablative conditioning or reduced-intensity conditioning with OS even when acute GVHD was absent or present at grade I-II or grade III-IV or when chronic GVHD was absent, limited, or extensive. This study demonstrates the actual existence of graft-versus-ATL effects in patients with ATL regardless of whether myeloablative conditioning or reduced-intensity conditioning is used.

© 2013 American Society for Blood and Marrow Transplantation.

INTRODUCTION

Adult T cell leukemia-lymphoma (ATL) is an aggressive peripheral T cell neoplasm caused by human T cell lymphotropic/leukemia virus type 1 (HTLV-1). It has a very poor prognosis, and it has been generally accepted that conventional chemotherapeutic agents alone, even including zidovudine/IFN- α , yield few or no long-term remissions or potential cures in patients with ATL [1–6]. Although early experience in myeloablative chemoradiotherapy together with autologous hematopoietic cell rescue for ATL has been

associated with high incidences of relapse and fatal toxicities [7], allogeneic hematopoietic cell transplantation (HCT) has been explored as a promising alternative treatment that can provide long-term remission in a proportion of patients with ATL [8–10].

We previously performed a nationwide retrospective study of patients with ATL who underwent allogeneic HCT in Japan, with special emphasis on the effect of the graft source. We concluded that allogeneic HCT using currently available sources is an effective treatment in selected patients with ATL, but that the use of unrelated cord blood as a stem cell source is associated with lower survival [11]. Our results suggest that allogeneic bone marrow transplantation (BMT) and peripheral blood stem cell transplantation (PBSCT) could be considered the more standard transplantation forms compared with unrelated cord blood transplantation (CBT) for ATL.

Financial disclosure: See Acknowledgments on page 1738.

* Correspondence and reprint requests: Takashi Ishida, MD, PhD, Department of Medical Oncology and Immunology, Nagoya City University Graduate School of Medical Sciences, 1 Kawasumi, Mizuho-chou, Mizuho-ku, Nagoya, Aichi, 467-8601, Japan.

E-mail address: itakashi@med.nagoya-cu.ac.jp (T. Ishida).

1083-8791/\$ — see front matter © 2013 American Society for Blood and Marrow Transplantation.

<http://dx.doi.org/10.1016/j.bbmt.2013.09.014>

As the next step, we conducted a nationwide retrospective study of patients with ATL who underwent allogeneic HCT other than CBT, with special emphasis on the effects of the preconditioning regimen, whether conventional myeloablative conditioning (MAC) or reduced-intensity conditioning (RIC). No significant difference in overall survival (OS) was observed between patients receiving MAC and those receiving RIC, but a trend toward RIC contributing to better OS in older patients was noted. Thus, we conclude that allogeneic HCT not only with MAC, but also with RIC, is an effective treatment resulting in long-term survival in selected patients with ATL [12].

ATL has a long latency and occurs in older individuals at a median age of nearly 66 years. The median age at diagnosis of ATL has been increasing over the last few decades [13]. Accordingly, the proportion of patients with ATL undergoing HCT with RIC is currently increasing in relation to HCT with MAC. It is thought that compared with HCT with MAC, allogeneic HCT with RIC depends more on donor cellular immune effects after transplantation and less on the cytotoxic effects of the conditioning regimen to eradicate residual tumor cells. In this context, RIC might be suitable for ATL, given that several reports have indicated the high immunogenicity of ATL cells [14–18] and even the existence of graft-versus-HTLV-1 and/or graft-versus-ATL effects [19–21].

Although we previously reported the impact of post-transplantation immune reactions, graft-versus-host disease (GVHD), on outcomes in patients with ATL [21], our cohort included CBT recipients whose OS curve had a quite different trajectory from that of BMT and PBSCT recipients [12]. Thus, in the present study, we evaluated whether acute and chronic GVHD affect outcomes in patients with ATL undergoing allogeneic HCT other than unrelated CBT, with special emphasis on the effects of the preconditioning regimen. Our present analysis included the previous cohort (1996 to 2005) [21] with updated clinical information, as well as data on 1 patient who underwent allogeneic HCT in 1995 and patients who underwent allogeneic HCT between 2006 and 2010.

PATIENTS AND METHODS

Data Collection

Data on patients with ATL who had undergone a first allogeneic BMT, PBSCT, or BMT + PBSCT were collected from nationwide survey data of the Japan Society for Hematopoietic Cell Transplantation (JSHCT). Cases with missing preconditioning information, acute GVHD, or survival data were excluded, leaving 679 patients. Because the association between the occurrence of acute GVHD and disease-associated mortality was difficult to evaluate in the event of early toxic death, patients who died within 30 days or were censored within 29 days of transplantation ($n = 63$) were excluded; thus, 616 patients who underwent HCT between March 1995 and December 2010 were included in our analysis.

Data collected for analysis included clinical characteristics, such as age at HCT, sex, disease status at HCT, date of HCT, time from diagnosis of ATL to HCT, performance status (PS) according to the Eastern Cooperative Oncology Group criteria at transplantation, stem cell source, donor–recipient relationship, ATL clinical subtype [22], preconditioning regimen, type of GVHD prophylaxis, date alive at last follow-up, date and cause of death, date of occurrence of acute GVHD and maximum grade of acute GVHD, and grade and date of occurrence of chronic GVHD. The study was approved by the Data Management Committees of the JSHCT, as well as by the Institutional Ethics Committee of Nagoya City University Graduate School of Medical Sciences.

Definitions

OS was defined as the time from HCT until death, and patients who remained alive at the time of the last follow-up were censored. Reported causes of death were reviewed and categorized into ATL-related mortality or treatment-related mortality (TRM). ATL-related mortality was defined as death caused by relapse or progression of ATL based on the judgment of each institution. TRM was defined as any death other than ATL-related mortality.

Table 1
Patient and Transplantation Characteristics by Type of Conditioning Regimen

Characteristic	MAC	RIC	P Value
Total patients, n (%)	284 (46.1)	332 (53.9)	
Age at HCT, y, n (%)			
<50	178 (62.7)	43 (13.0)	<.0001
51–55	79 (27.8)	91 (27.4)	
56–60	20 (7.0)	125 (37.7)	
61+	7 (2.5)	73 (22.0)	
Sex, n (%)			
Male	159 (56.0)	160 (48.2)	.0628
Female	125 (44.0)	172 (51.8)	
Disease status at HCT, n (%)			
CR	104 (36.6)	128 (38.6)	.1013
Not in CR	161 (56.7)	194 (58.4)	
Unknown	19 (6.7)	10 (3.0)	
GVHD prophylaxis, n (%)			
CyA + MTX	129 (45.4)	112 (33.7)	<.0001
FK506 + MTX	142 (50.0)	147 (44.3)	
CyA	6 (2.1)	58 (17.5)	
FK506	5 (1.8)	13 (3.9)	
Unknown	2 (0.7)	2 (0.6)	
Stem cell source, n (%)			
BM	216 (76.1)	213 (64.2)	.0015
PBSCs	68 (23.9)	117 (35.2)	
BM + PBSCs	0 (0.0)	2 (0.6)	
Donor–recipient relationship, n (%)			
HLA-matched related	98 (34.5)	120 (36.1)	.3649
HLA-mismatched related	24 (8.5)	40 (12.0)	
Unrelated	160 (56.3)	171 (51.5)	
Unknown	2 (0.7)	1 (0.3)	
PS at HCT, n (%)			
0	111 (39.1)	144 (43.4)	.0012
1	127 (44.7)	154 (46.4)	
2	26 (9.2)	27 (8.1)	
3	3 (1.1)	5 (1.5)	
4	1 (0.4)	1 (0.3)	
Unknown	16 (5.6)	1 (0.3)	
ATL clinical subtype, n (%)			
Chronic/smoldering	11 (3.9)	10 (3.0)	.5278
Acute	171 (60.2)	189 (56.9)	
Lymphoma	80 (28.2)	97 (29.2)	
Unknown	22 (7.7)	36 (10.8)	
Time from diagnosis to HCT, d, n (%)			
16–153	82 (28.9)	72 (21.7)	.0632
154–204	64 (22.5)	88 (26.5)	
205–307	75 (26.4)	78 (23.5)	
308–4355	63 (22.2)	91 (27.4)	
Unknown	0 (0.0)	3 (0.9)	
Time of HCT, n (%)			
March 1995 to March 2005	75 (26.4)	79 (23.8)	.3119
April 2005 to May 2007	75 (26.4)	79 (23.8)	
June 2007 to February 2009	73 (25.7)	81 (24.4)	
March 2009 to December 2010	61 (21.5)	93 (28.0)	
Grade of acute GVHD, n (%)			
No acute GVHD	80 (28.2)	128 (38.6)	.0111
Grade I–II	148 (52.1)	159 (47.9)	
Grade III–IV	56 (19.7)	45 (13.6)	

Acute GVHD was diagnosed and graded using traditional criteria [23] by the physicians who performed HCT at each institution, as was chronic GVHD [24]. Among the 487 patients who survived at least 100 days after HCT, 431 patients with complete information on the grade and the day of occurrence of chronic GVHD were included in the analysis for chronic GVHD.

Patients undergoing allogeneic BMT or PBSCT were divided into 2 groups, MAC and RIC, based on the preconditioning regimen. MAC and RIC were defined according to Giralt et al. [25] and Bacigalupo et al. [26] with slight modifications. In the present study, MAC was defined as any regimen that includes (1) ≥ 5 Gy of total body irradiation (TBI) as a single fraction or ≥ 8 Gy fractionated, (2) busulfan > 8 mg/kg orally or the i.v. equivalent, or (3) melphalan > 140 mg/m². All other regimens were classified as RIC.

Statistical Analysis

Comparisons among the groups were performed using Fisher's exact test as appropriate for categorical variables. The probability of survival was

estimated by the Kaplan-Meier method. TRM and ATL-related mortality were estimated using cumulative incidence curves to accommodate the competing events ATL-related mortality for TRM and TRM for ATL-related mortality [27]. Semilandmark plots were used to illustrate the effects of GVHD on survival and the cumulative incidence of ATL-related mortality and TRM. This landmark method was used to exclude bias that might have arisen from including patients who died too early to develop GVHD in the group without GVHD [28,29]. For patients with acute or chronic GVHD, the probability of survival and the cumulative incidences of ATL-related mortality and TRM were plotted as functions of time from the onset of acute or chronic GVHD. Day 25, the median day of onset for acute GVHD (range, 6 to 166 days), was designated the landmark day for acute GVHD. Day 126, the median day of onset for chronic GVHD (range, 52 to 1203 days), was designated the landmark day for chronic GVHD.

Multivariate Cox proportional hazards regression models were used to evaluate variables potentially affecting OS, and Fine and Gray proportional subdistribution hazards models [30] were used to evaluate variables potentially affecting ATL-related mortality and TRM. In these regression models, the occurrence of acute and chronic GVHD was treated as a time-varying covariate [31]. In the analysis of acute GVHD, patients were assigned to the no acute GVHD group at the time of HCT and then transferred to the grade I-II acute GVHD group or to the grade III-IV acute GVHD group at the onset of acute GVHD. In the analysis of chronic GVHD, patients were assigned to the no chronic GVHD group at the time of HCT and then transferred to the limited chronic GVHD group or to the extensive chronic GVHD group at the onset of chronic GVHD. We also assessed the interaction between acute and chronic GVHD and the preconditioning regimen in the multivariate models.

The heterogeneities of the effects of grade I-II or III-IV acute GVHD on OS according to background transplantation characteristics were evaluated by forest plots stratified by variables included in the regression analyses. Results are expressed as hazard ratio (HR) with 95% confidence interval (CI). All tests were 2-sided, and a *P* value <.05 was considered to indicate statistical significance. All statistical analyses were performed by Kureha Special Laboratory (Tokyo, Japan) using SAS 9.3 (SAS Institute, Cary, NC).

RESULTS

Patient Characteristics

Among the 616 patients in the study cohort, 284 received MAC and the remaining 332 received RIC. Characteristics of these patients are summarized in Table 1. Compared with MAC recipients, significantly fewer RIC recipients belonged to the youngest age group (<50 years), and significantly more were in the 2 oldest age groups (56 to 60 and 61+ years). In addition, significantly fewer RIC recipients received cyclosporin A (CyA) + methotrexate (MTX), but significantly more received CyA without MTX. PBSCT was significantly more frequent in RIC recipients compared with MAC recipients. There was no significant difference between MAC and RIC recipients regarding PS distribution from 0 to 4, but an unknown PS was observed significantly more frequently in the MAC recipients. A significantly greater number of RIC recipients did not have acute GVHD, and significantly fewer had grade III-IV acute GVHD.

Effects of Acute GVHD on Survival

In the 208 patients with ATL and no acute GVHD, the unadjusted 1-year and 3-year probabilities of survival from the landmark day for acute GVHD were 45.4% (95% CI, 38.3 to 52.2%) and 37.3% (95% CI, 30.3 to 44.4%), respectively. The unadjusted 1-year and 3-year probabilities of survival from the onset of acute GVHD were 60.1% (54.2 to 65.5%) and 49.1% (43.0 to 55.0%), respectively, in the 307 patients with grade I-II acute GVHD and 36.4% (26.9 to 46.0%) and 21.7% (13.9 to 30.6%), respectively, in the 101 patients with grade III-IV acute GVHD (Figure 1A).

Forest plots revealed that the development of grade I-II acute GVHD was associated with longer OS compared with the absence of acute GVHD in patients with the following characteristics: age <56 years, either male or female, not in complete remission (CR), receiving FK506 + MTX,

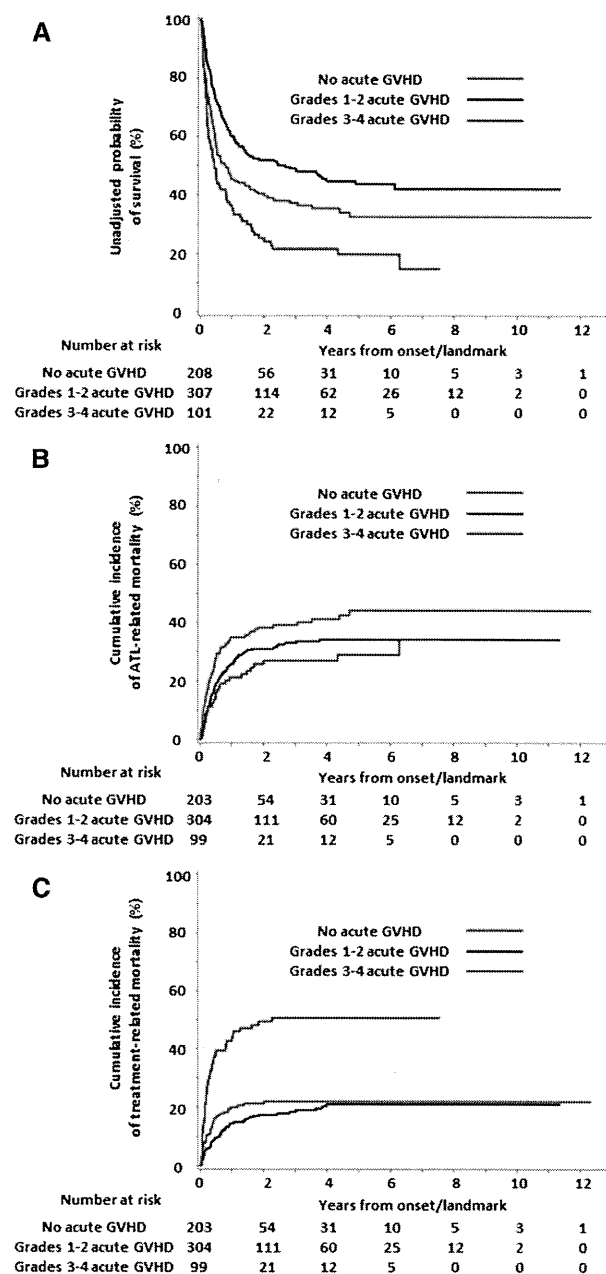


Figure 1. Semi-landmark plots illustrating the effects of acute GVHD on survival, ATL-related mortality, and TRM. (A) HR for survival in patients with grade I-II and grade III-IV acute GVHD compared with patients with no acute GVHD: 0.681 (95% CI, 0.537 to 0.863) versus 1.437 (95% CI, 1.082 to 1.910). (B) HR for ATL-related mortality in patients with grade I-II and grade III-IV acute GVHD compared with patients with no acute GVHD: 0.729 (95% CI, 0.540 to 0.984) versus 0.624 (95% CI, 0.403 to 0.967). (C) HR for TRM in patients with grade I-II and grade III-IV acute GVHD compared with patients with no acute GVHD: 0.824 (95% CI, 0.552 to 1.232) versus 2.793 (95% CI, 1.884 to 4.229).

undergoing either BMT or PBSCT, having an unrelated donor, PS 1 at transplantation, acute type of ATL, interval between ATL diagnosis and HCT of 308 to 4355 days, and date of HCT between June 2007 and February 2009. The development of grade I-II acute GVHD was also significantly associated with longer OS compared with the absence of acute GVHD regardless of whether the patient received MAC or RIC. On the other hand, this comparison revealed a shorter OS in the patients with lymphoma type ATL (Figure 2). These plots also revealed that the development of grade III-IV acute GVHD

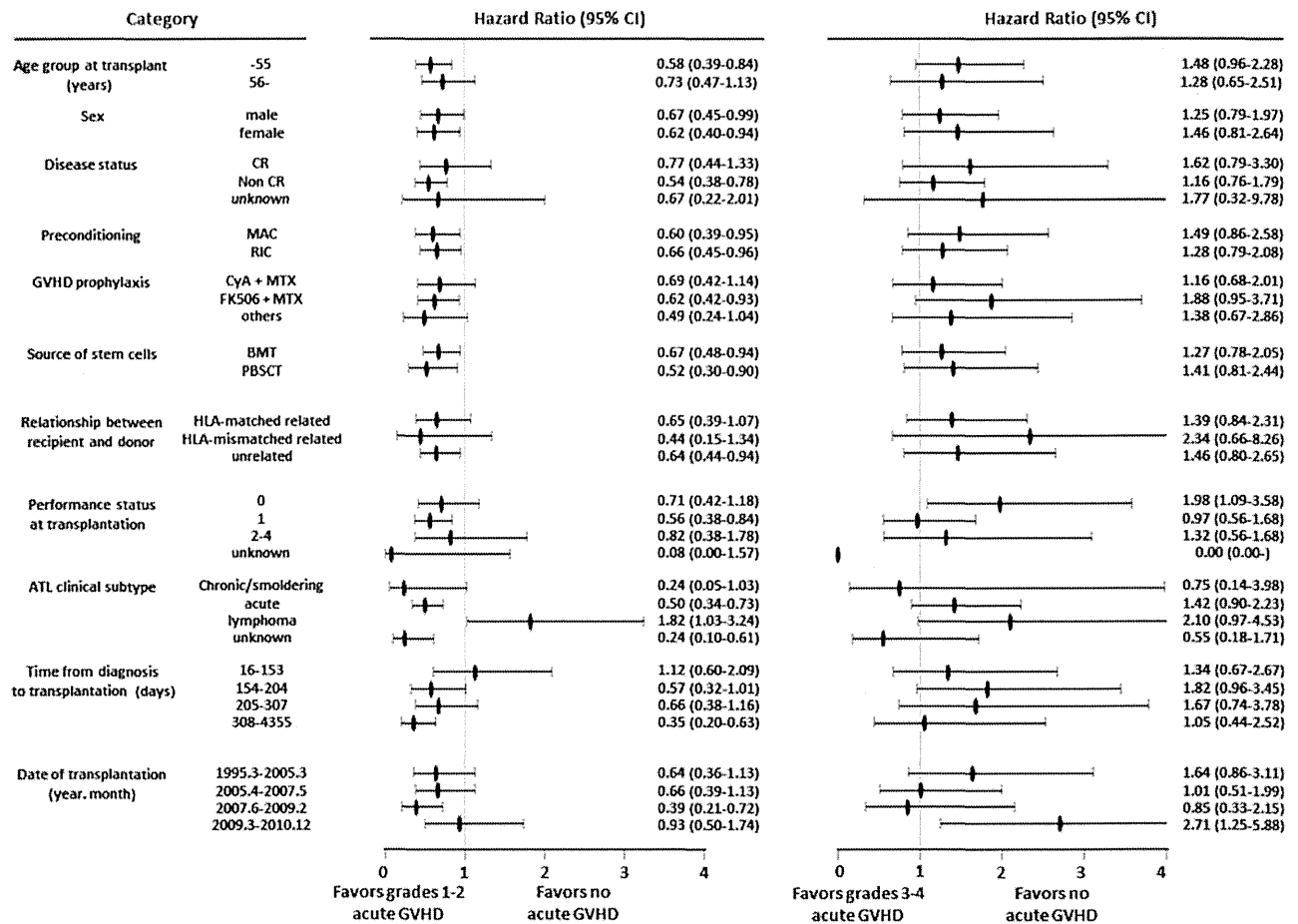


Figure 2. Impact of the grade of acute GVHD on OS in each stratified category. Effects of grade I-II (A) and grade III-IV acute GVHD (B) on OS are shown as forest plots. Closed ellipses on lines indicates HRs compared with the no acute GVHD group, and horizontal lines represent the corresponding 95% CI.

was significantly associated with shorter OS compared with the absence of acute GVHD in patients with PS 0 and who underwent HCT between March 2009 and December 2010. However, this comparison revealed no significant findings for OS according to whether the patient received MAC or RIC (Figure 2).

Multivariate analysis of the 616 study patients was performed to examine whether acute GVHD affects OS using the following variables: age (15 to 55 or 56 to 72 years), sex, disease status at HCT (CR, not CR, or unknown), preconditioning regimen (MAC or RIC), GVHD prophylaxis (CyA + MTX, FK506 + MTX, or other/unknown), relationship between recipient and donor (HLA-matched related, HLA-mismatched related, or unrelated), PS (0, 1, 2 to 4, or unknown), ATL clinical subtype (chronic/smoldering, acute, lymphoma, or unknown), time from diagnosis to HCT (16 to 153, 154 to 204, 205 to 307, or 308 to 4355 days or unknown), date of HCT (March 1995 to March 2005, April 2005 to May 2007, June 2007 to February 2009, or March 2009 to December 2010), and source of stem cells (bone marrow [BM], peripheral blood stem cells [PBSCs], or BM + PBSCs), as well as acute GVHD as a time-dependent covariate (no, grade I-II, or grade III-IV). There was a significant positive impact of grade I-II acute GVHD on OS (HR, 0.634; 95% CI, 0.477 to 0.843) compared with no acute GVHD (Table 2).

To further investigate the clinical significance of acute GVHD for OS, we divided acute GVHD into 5 categories (none or grade I, II, III, or IV) and then performed multivariate

analysis in the same manner as described above. HRs for OS of patients with grade I, II, III, and IV acute GVHD compared with the absence of acute GVHD were 0.568 (95% CI, 0.402 to 0.801), 0.688 (95% CI, 0.501 to 0.946), 1.199 (95% CI, 0.831 to 1.730), and 2.245 (95% CI, 1.354 to 3.722), respectively.

Interactions of the Preconditioning Regimen with Acute GVHD for OS

We tested statistical interactions between the preconditioning regimens and acute GVHD with regard to OS by adding an interaction term to the multivariate analysis. This analysis included the same variables as the multivariate Cox proportional hazards regression models for OS. Among the 616 patients, when the HR for death of MAC recipients with no acute GVHD was set as 1.000, the HRs in MAC recipients with grade I-II acute GVHD and in RIC recipients with no GVHD and with grade I-II acute GVHD were 0.659, 0.971, and 0.592, respectively ($P_{\text{interaction}} = .7962$), and the HRs in MAC and RIC recipients with grade III-IV acute GVHD were 1.343 and 1.387, respectively ($P_{\text{interaction}} = .7603$) (Figure 3A).

Effects of Acute GVHD on ATL-Related Mortality and TRM

Among the 616 patients receiving allogeneic BMT or PBSCT, 10 patients could not be assigned to either the ATL-related mortality or TRM category because of missing detailed information on the cause of death. The cumulative incidences of ATL-related mortality at 1 year and 3 years from the landmark day for acute GVHD were 35.0% (95% CI,

Table 2
Effect of Acute GVHD on OS, ATL-related Mortality, and TRM after Allogeneic HCT

Outcome	HR (95% CI)	P Value
OS [*]		
No acute GVHD	1.000	Reference
Grade I-II acute GVHD	0.634 (0.477-0.843)	.0017
Grade III-IV acute GVHD	1.380 (0.988-1.927)	.0590
ATL-related mortality [†]		
No acute GVHD	1.000	Reference
Grade I-II acute GVHD	0.833 (0.566-1.224)	.3511
Grade III-IV acute GVHD	0.599 (0.373-0.964)	.0347
TRM [‡]		
No acute GVHD	1.000	Reference
Grade I-II acute GVHD	0.645 (0.407-1.023)	.0624
Grade III-IV acute GVHD	2.474 (1.495-4.095)	.0004

* Other than acute GVHD, the following 4 variables significantly affected OS: older age (56 to 72 yr compared with 15 to 55 yr: HR, 1.356; 95% CI, 1.033 to 1.781), male sex (HR, 1.404; 95% CI, 1.127 to 1.750), not in CR compared with CR (HR, 1.877; 95% CI, 1.459 to 2.416), and worse PS (1 compared with 0: HR, 1.486; 85% CI, 1.168 to 1.889; 2 to 4 compared with 0: HR, 2.691; 95% CI, 1.918 to 3.777).

† Other than acute GVHD the following 2 variables significantly affected ATL-related mortality: not in CR compared with CR (HR, 2.633; 95% CI, 1.818 to 3.814) and worse PS (2 to 4 compared with 0: HR, 3.272; 95% CI, 2.100 to 5.099).

‡ Other than acute GVHD, the following 3 variables significantly affected TRM: older age (56 to 72 yr compared with 15 to 55 yr: HR, 1.663; 95% CI, 1.025 to 2.697), male sex (HR, 1.545; 95% CI, 1.078 to 2.214), and transplantation from an unrelated donor compared with an HLA-matched related donor (HR, 2.098; 95% CI, 1.131 to 3.895).

27.6% to 42.5%) and 39.2% (95% CI, 31.1% to 47.2%), respectively, in the 203 patients with no acute GVHD. Those of TRM were 20.0% (95% CI, 13.5% to 27.5%) and 22.0% (95% CI, 14.8% to 30.1%), respectively (Figure 1B and C). The cumulative incidences of ATL-related mortality at 1 year and 3 years from the onset of acute GVHD were 25.8% (95% CI, 20.5% to 31.4%) and 33.0% (95% CI, 26.9% to 39.3%), respectively, in the 304 patients with grade I-II acute GVHD, whereas those of TRM were 14.5% (95% CI, 10.1% to 19.6%) and 18.5% (95% CI, 13.0% to 24.6%), respectively (Figure 1B and C). In the 99 patients with grade III-IV acute GVHD, the cumulative incidences of ATL-related mortality at 1 year and 3 years from the onset of acute GVHD were 21.2% (95% CI, 10.8% to 33.8%) and 27.0% (95% CI, 14.2% to 41.5%), respectively, and those of TRM were 42.7% (95% CI, 31.8% to 53.3%) and 50.7% (95% CI, 38.6% to 61.7%), respectively (Figure 1B and C).

We next applied the Fine and Gray proportional hazards model to the 606 patients. The analysis included the same

variables as in the multivariate Cox proportional hazards regression models for OS. There were significant associations between grade III-IV acute GVHD and lower ATL-related mortality (HR, 0.599; 95% CI, 0.373 to 0.964) and higher TRM (HR, 2.474; 95% CI, 1.495 to 4.095) compared with no acute GVHD (Table 2).

In investigating the clinical significance of acute GVHD for ATL-related mortality or TRM, we divided acute GVHD into 5 categories (none and grade I, II, III, and IV) and conducted the analysis in the same manner as described above. HRs for ATL-related mortality in patients with grade I, II, III, and IV acute GVHD compared with the absence of acute GVHD were 0.809 (95% CI, 0.517 to 1.268), 0.857 (95% CI, 0.558 to 1.315), 0.585 (95% CI, 0.347 to 0.986), and 0.654 (95% CI, 0.298 to 1.435), respectively. HRs for TRM in patients with grade I, II, III, and IV acute GVHD compared with the absence of acute GVHD were 0.519 (95% CI, 0.282 to 0.955), 0.747 (95% CI, 0.455 to 1.227), 2.153 (95% CI, 1.267 to 3.659), and 4.114 (95% CI, 2.033 to 8.326), respectively.

Effects of Chronic GVHD on Survival

Among the 431 patients evaluable for chronic GVHD, 199 received MAC and 232 received RIC. In the MAC group, limited and extensive chronic GVHD occurred in 26 (13.1%) and 67 patients (33.7%), respectively, and in the RIC group, limited and extensive chronic GVHD occurred in 35 (15.1%) and 65 patients (28.0%), respectively. Regarding the incidence and grade of chronic GVHD, there were no significant differences between MAC and RIC recipients. In the 214 patients with no chronic GVHD, the unadjusted 1-year and 3-year probabilities of survival from the landmark day for chronic GVHD were 58.7% (95% CI, 51.6 to 65.1%) and 51.0% (95% CI, 43.6 to 57.9%), respectively. Those probabilities from the onset of chronic GVHD were 77.4% (64.2 to 86.2%) and 61.7% (46.7 to 73.6%), respectively, in the 60 patients with limited chronic GVHD and were 70.4% (61.7 to 77.5%) and 55.1% (45.5 to 63.7%), respectively, in the 132 patients with extensive chronic GVHD. Twenty-five patients were excluded from this semilandmark plot because they were censored or died before the landmark day for chronic GVHD (Figure 4A).

We performed a multivariate analysis of data on 431 patients to examine whether chronic GVHD affects OS using the following variables: age, sex, disease status, pre-conditioning regimen, GVHD prophylaxis, donor–recipient relationship, PS, ATL clinical subtype, time from diagnosis to

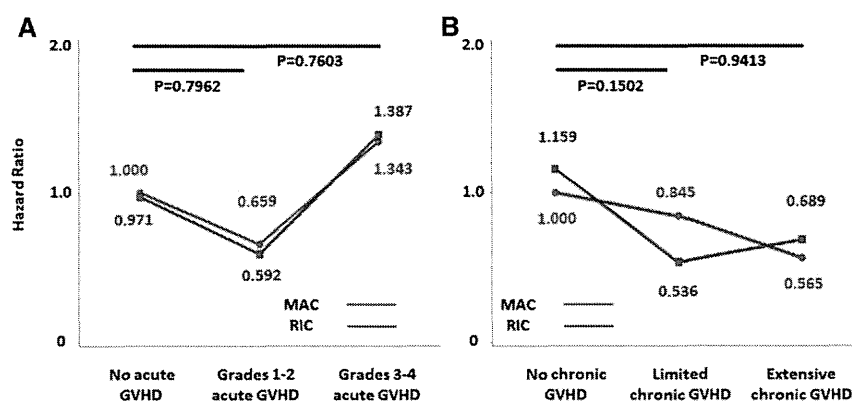


Figure 3. Interactions of the preconditioning regimen with acute GVHD for overall survival. Statistical interactions between the preconditioning regimens (MAC or RIC) and acute GVHD (absent versus grade I-II or grade II-IV; A) and chronic GVHD (absent versus limited or extensive type; B) for overall survival were analyzed.

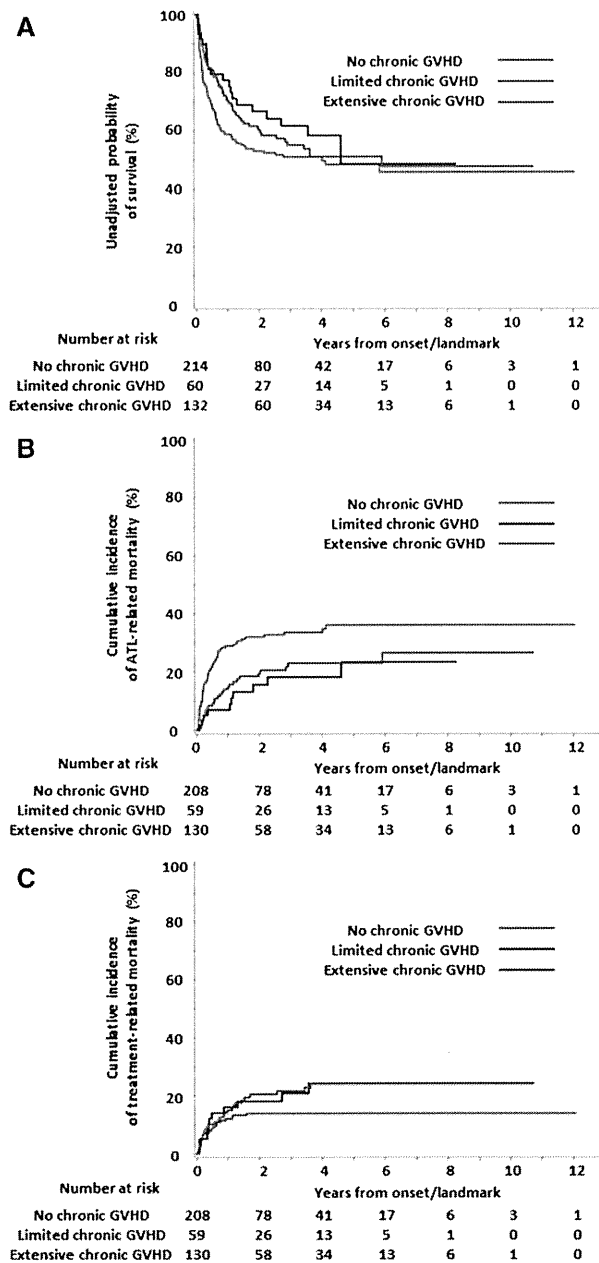


Figure 4. Semilandmark plots illustrating the effects of chronic GVHD on survival, ATL-related mortality, and TRM. (A) HR for survival in patients with limited and extensive chronic GVHD compared with patients with no chronic GVHD: 0.719 (95% CI, 0.457 to 1.131) versus 0.796 (95% CI, 0.576 to 1.100). (B) HR for ATL-related mortality in patients with limited and extensive chronic GVHD compared with patients with no chronic GVHD: 0.461 (95% CI, 0.237 to 0.897) versus 0.570 (95% CI, 0.366 to 0.886). (C) HR for TRM in patients with limited and extensive chronic GVHD compared with patients with no chronic GVHD: 1.609 (95% CI, 0.815 to 3.175) versus 1.620 (95% CI, 0.955 to 2.749).

HCT, date of HCT, and stem cell source, as well as chronic GVHD as a time-dependent covariate. We found a significant positive impact of extensive chronic GVHD on OS compared with no chronic GVHD (HR, 0.585; 95% CI, 0.389 to 0.880) (Table 3).

Interactions of the Preconditioning Regimen with Chronic GVHD for OS

We tested the statistical interactions between the preconditioning regimens and chronic GVHD for OS by adding

Table 3
Effect of Chronic GVHD on OS, ATL-related Mortality, and TRM after Allogeneic HCT

Outcome	HR (95% CI)	P Value
OS ^a		
No chronic GVHD	1.000	Reference
Limited chronic GVHD	0.597 (0.354-1.007)	.0533
Extensive chronic GVHD	0.585 (0.389-0.880)	.0100
ATL-related mortality ^b		
No chronic GVHD	1.000	Reference
Limited chronic GVHD	0.395 (0.184-0.847)	.0170
Extensive chronic GVHD	0.421 (0.240-0.740)	.0026
TRM ^c		
No chronic GVHD	1.000	Reference
Limited chronic GVHD	1.549 (0.704-3.409)	.2767
Extensive chronic GVHD	1.204 (0.659-2.201)	.5462

^a Other than chronic GVHD, the following 3 variables significantly affected OS: male sex (HR, 1.480; 95% CI, 1.103 to 1.986), not in CR compared with CR (HR, 1.629; 95% CI, 1.171 to 2.266), worse PS (1 compared with 0: HR, 1.446; 95% CI, 1.057 to 1.980, 2 to 4 compared with 0: HR, 2.828; 95% CI, 1.751 to 4.568).

^b Other than chronic GVHD, the following 2 variables significantly affected ATL-related mortality: not in CR compared with CR (HR, 2.499; 95% CI, 1.563 to 3.994), worse performance score (1 compared with 0: HR, 1.524; 95% CI, 1.013 to 2.294, 2 to 4 compared with 0: HR, 2.383; 95% CI, 1.216 to 4.669).

^c The following 4 variables significantly affected TRM: older age (56 to 72 yr compared with 15 to 55 yr: HR, 2.022; 95% CI, 1.045 to 3.913), male sex (HR, 2.254; 95% CI, 1.322 to 3.844), worse performance score (2 to 4 compared with 0: HR, 3.127; 95% CI, 1.260 to 7.762), and ATL clinical subtype (acute compared with chronic/smoldering type: HR, 0.288; 95% CI, 0.093 to 0.897; lymphoma compared with chronic/smoldering type: HR, 0.249; 95% CI, 0.078 to 0.794).

an interaction term into the multivariate analysis. The analysis included the same variables as the multivariate Cox proportional hazards regression models for OS with chronic GVHD. Among the 431 patients, when the HR for death of MAC recipients with no chronic GVHD was set as 1.000, the HRs in MAC recipients with limited chronic GVHD and RIC recipients with no GVHD and limited chronic GVHD were 0.845, 1.159, and 0.536, respectively ($P_{\text{interaction}} = .1502$), and the HRs in MAC and RIC recipients with extensive chronic GVHD were 0.565 and 0.689, respectively ($P_{\text{interaction}} = .9413$) (Figure 3B).

Effects of Chronic GVHD on ATL-Related Mortality and TRM

Among the 406 patients analyzed by a semilandmark plot for survival, 9 could not be assigned to either the ATL-related mortality or TRM category. The cumulative incidences of ATL-related mortality at 1 year and 3 years from the landmark day for chronic GVHD were 29.0% (95% CI, 22.4% to 35.8%) and 33.7% (95% CI, 26.4% to 41.1%), respectively, in the 208 patients with no chronic GVHD, whereas those of TRM were 12.0% (95% CI, 7.3% to 18.1%) and 13.9% (95% CI, 8.5% to 20.7%), respectively (Figure 4B and C). In the 59 patients with limited chronic GVHD, the cumulative incidences of ATL-related mortality at 1 year and 3 years from the onset of chronic GVHD were 7.0% (95% CI, 2.1% to 16.1%) and 18.3% (95% CI, 7.7% to 32.4%), respectively, and those of TRM were 16.0% (95% CI, 7.5% to 27.4%) and 20.8% (95% CI, 10.1% to 34.1%), respectively (Figure 4B and C). In the 130 patients with extensive chronic GVHD, the cumulative incidences of ATL-related mortalities at 1 year and 3 years from the onset of chronic GVHD were 15.1% (95% CI, 9.0% to 22.6%) and 23.1% (95% CI, 14.7% to 32.6%), respectively, and those of TRM were 15.0% (95% CI, 9.1% to 22.3%) and 21.6% (95% CI, 13.9% to 30.5%), respectively (Figure 4B and C).

We next applied the Fine and Gray proportional hazards model to the 422 patients evaluable for chronic GVHD who could be assigned to either the ATL-related mortality or the TRM category. The analysis included the same variables as the multivariate Cox proportional hazards regression models for OS. Chronic GVHD was significantly associated with reduced ATL-related mortality. HRs for recipients with limited and extensive chronic GVHD compared with the absence of chronic GVHD were 0.395 (95% CI, 0.184 to 0.847) and 0.421 (95% CI, 0.240 to 0.740), respectively (Table 3). On the other hand, chronic GVHD was not significantly associated with TRM.

DISCUSSION

To the best of our knowledge, this is the largest retrospective study reported to date analyzing the impact of acute and chronic GVHD on clinical outcomes in ATL. As shown in Table 1, the associations with no acute GVHD and without grade III-IV acute GVHD were significant in RIC recipients compared with MAC recipients. Those findings are consistent with reports of an association between dose-intensified conditioning, especially regimens including TBI, and acute GVHD [32,33]. Our results also show no significant difference in the occurrence of chronic GVHD between MAC and RIC recipients. This may be because the effects of older age and more frequent PBSCT, which increase the occurrence of chronic GVHD, were counterbalanced by the lower frequency of history of previous acute GVHD, which reduces the incidence of chronic GVHD, in the RIC recipients [32,34].

Forest plots revealed that the development of grade I-II acute GVHD was associated with favorable OS compared with the absence of acute GVHD in most categories, with the exception of lymphoma in the ATL clinical subtype category. The reason for this exception is unclear, however. Our forest plots also show that the occurrence of grade III-IV acute GVHD was associated with unfavorable OS in most categories.

The significant positive impact of grade I-II acute GVHD on OS identified by multivariate analysis confirmed the results presented in our previous report [21]. However, in the present study, we found that grade I-II acute GVHD had no significant association with ATL-related mortality, in disagreement with our previous report showing a significant association between grade I-II acute GVHD and decreased ATL-related mortality in ATL patients undergoing allogeneic HCT [21]. We surmise that the incompatibility might stem from 2 factors, the influence of unrelated CBT, which was included in the previous study [21], and the progress in transplantation-related medicine from 2006 onward. The clear trend of decreased TRM in patients with grade I-II acute GVHD observed here seems a bit puzzling, but we have no suitable explanation. With respect to preconditioning, there were no significant interactions between MAC and RIC for OS even when post-transplantation acute GVHD was absent or present at grade I-II or III-IV.

Our multivariate analysis revealed a clear trend toward a favorable OS with limited chronic GVHD and a significant association with lower ATL-related mortality. These findings are consistent with previous reports by our group [20] and others [35]. The latter report included a variety of hematologic diseases. Even though our univariate analyses revealed a trend toward better survival (but without significance) in patients with extensive chronic GVHD in the semilandmark plots (Figure 4A), our multivariate analysis demonstrated that a significant association between extensive chronic

GVHD and a favorable OS. This finding is in disagreement with our previous report [21] and another study demonstrating a negative impact of extensive chronic GVHD on OS [35]. Extensive chronic GVHD had a significant association with lower ATL-related mortality, but not with TRM. The former finding was reasonable and expected, but the latter was not consistent with our previous report demonstrating significant associations between extensive chronic GVHD and greater TRM [21]. Although the present study found a significant association between extensive chronic GVHD and favorable OS in the patients with ATL, we also must pay special attention to the fact that quality of life after HCT is highly compromised by chronic GVHD [36]. With respect to preconditioning, there were also no significant interactions between MAC and RIC with OS even when chronic GVHD was absent, limited, or extensive.

Several promising new agents for treating ATL are currently under development [37–40]. These novel treatments should increase the number of patients with a sufficient disease control status and who have maintained a good PS who could become suitable candidates for HCT [12]. These agents will also contribute to the establishment of better rescue strategies for patients relapsing after HCT [41]. Among the novel agents, we should pay special attention to mogamulizumab (humanized anti-CCR4 monoclonal antibody) [42], which was approved for the treatment of ATL in Japan in 2012, because of its potent activity that depletes regulatory T (Treg) cells, leading to enhanced antitumor activity [38,43,44]. The occurrence and severity of GVHD are closely associated with low Treg frequency [45]; thus, a decrease in Treg cells caused by mogamulizumab not only may lead to enhanced GVHD, but also may provoke an anti-HTLV-1/ATL immune effect.

Although this study reports significant novel findings on GVHD in patients with ATL, it also has inherent limitations common to observational retrospective studies. First, eligibility for HCT as well as choice of transplantation protocol, including the selection of MAC or RIC, were determined by physicians at each institution. Second, regarding analysis of mortality, it was not always easy to determine whether death after allogeneic HCT was an ATL-related mortality or TRM, in part because patients with relapsed ATL sometimes achieve partial or complete remission after decreasing or discontinuing immunosuppressive agents, donor lymphocyte infusions, or chemotherapy, which can result in long-term remission and survival [20]. Third, acute GVHD is occasionally induced in some patients considered at high risk for relapse by treating clinicians. Finally, the evaluation of chronic GVHD according to the 2005 National Institutes of Health consensus criteria [46] is not possible in this study, which was based on nationwide survey data of the JSHCT.

In conclusion, we found that the development of mild to moderate (grade I-II) acute GVHD was significantly associated with favorable OS, as was the development of both limited and extensive chronic GVHD. Regarding preconditioning, we found no difference in the clinical impact of acute GVHD and chronic GVHD on OS between patients receiving MAC and those receiving RIC. These findings confirm the actual existence of graft-versus-HTLV-1 and/or graft-versus-ATL effects in recipients of HCT for ATL regardless of whether MAC or RIC was used. New strategies that enhance the post-transplantation allogeneic anti-HTLV-1 effect targeting HTLV-1-associated antigens, such as Tax and/or HBZ [14–17], and/or the anti-ATL effect targeting tumor-specific antigens, such as cancer testis antigens [18],

which do not provoke GVHD, lead to improved outcomes in patients undergoing allogeneic HCT for ATL.

ACKNOWLEDGMENTS

The authors are grateful to all the physicians and data managers at the institutes who contributed valuable data on transplantation for adult T cell leukemia-lymphoma to the Japan Society for Hematopoietic Cell Transplantation (JSHCT). They thank all of the members of the Data Management Committees of JSHCT.

Financial disclosure: Grants-in-Aid for National Cancer Center Research and Development Fund (No.23-A-17, to T.I. and A.U.), and Health and Labor Sciences Research Grants (H22-Clinical Cancer Research-general-028 and H23-Third Term Comprehensive Control Research for Cancer-general-011, to T.I. and A.U.) from the Ministry of Health, Labor, and Welfare, Japan.

Conflict of interest statement: Nagoya City University Graduate School of Medical Sciences has received research grant support from Kyowa Hakko Kirin for work provided by T.I. T.I. has received honoraria from Kyowa Hakko Kirin for his work. No other conflict of interest relevant to this article is reported.

Authorship statement: T.I., M.H., K.K., R.T., and A.U. designed the research, organized the project, and wrote the manuscript. T.I. helped with statistical analysis. H.S. and R.S. collected data from the JSHCT, and Y.M. collected data from the JMDDP. All authors interpreted data and reviewed and approved the final manuscript.

REFERENCES

- Uchiyama T, Yodoi J, Sagawa K, et al. Adult T-cell leukemia: clinical and hematologic features of 16 cases. *Blood*. 1977;50:481-492.
- Vose J, Armitage J, Weisenburger D. International T-Cell Lymphoma Project. International peripheral T-cell and natural killer/T-cell lymphoma study: pathology findings and clinical outcomes. *J Clin Oncol*. 2008;26:4124-4130.
- Tsukasaki K, Hermine O, Bazarbachi A, et al. Definition, prognostic factors, treatment, and response criteria of adult T-cell leukemia-lymphoma: a proposal from an international consensus meeting. *J Clin Oncol*. 2009;27:453-459.
- Tsukasaki K, Utsunomiya A, Fukuda H, et al. VCAP-AMP-VECP compared with biweekly CHOP for adult T-cell leukemia-lymphoma: Japan Clinical Oncology Group Study JCOG9801. *J Clin Oncol*. 2007;25:5458-5464.
- Katsuya H, Yamanaka T, Ishitsuka K, et al. Prognostic index for acute- and lymphoma-type adult T-cell leukemia/lymphoma. *J Clin Oncol*. 2012;30:1635-1640.
- Bazarbachi A, Plutelle Y, Carlos Ramos J, et al. Meta-analysis on the use of zidovudine and interferon-alfa in adult T-cell leukemia/lymphoma showing improved survival in the leukemic subtypes. *J Clin Oncol*. 2010;28:4177-4183.
- Tsukasaki K, Maeda T, Arimura K, et al. Poor outcome of autologous stem cell transplantation for adult T cell leukemia/lymphoma: a case report and review of the literature. *Bone Marrow Transplant*. 1999;23:87-89.
- Utsunomiya A, Miyazaki Y, Takatsuka Y, et al. Improved outcome of adult T cell leukemia/lymphoma with allogeneic hematopoietic stem cell transplantation. *Bone Marrow Transplant*. 2001;27:15-20.
- Okamura J, Utsunomiya A, Tanosaki R, et al. Allogeneic stem-cell transplantation with reduced conditioning intensity as a novel immunotherapy and antiviral therapy for adult T-cell leukemia/lymphoma. *Blood*. 2005;105:4143-4145.
- Fukushima T, Miyazaki Y, Honda S, et al. Allogeneic hematopoietic stem cell transplantation provides sustained long-term survival for patients with adult T-cell leukemia/lymphoma. *Leukemia*. 2005;19:829-834.
- Hishizawa M, Kanda J, Utsunomiya A, et al. Transplantation of allogeneic hematopoietic stem cells for adult T-cell leukemia: a nationwide retrospective study. *Blood*. 2010;116:1369-1376.
- Ishida T, Hishizawa M, Kato K, et al. Allogeneic hematopoietic stem cell transplantation for adult T-cell leukemia-lymphoma with special emphasis on preconditioning regimen: a nationwide retrospective study. *Blood*. 2012;120:1734-1741.
- Iwanaga M, Watanabe T, Yamaguchi K. Adult T-cell leukemia: a review of epidemiological evidence. *Front Microbiol*. 2012;3:322.
- Harashina N, Kurihara K, Utsunomiya A, et al. Graft-versus-Tax response in adult T-cell leukemia patients after hematopoietic stem cell transplantation. *Cancer Res*. 2004;64:391-399.
- Suzuki S, Masaki A, Ishida T, et al. Tax is a potential molecular target for immunotherapy of adult T-cell leukemia/lymphoma. *Cancer Sci*. 2012;103:1764-1773.
- Arnulf B, Thorel M, Poirot Y, et al. Loss of the *ex vivo* but not the reinducible CD8⁺ T-cell response to Tax in human T-cell leukemia virus type 1-infected patients with adult T-cell leukemia/lymphoma. *Leukemia*. 2004;18:126-132.
- Masaki A, Ishida T, Suzuki S, et al. Autologous Tax-specific CTL therapy in a primary ATL cell-bearing NOD/Shi-scid, IL-2R γ ^{null} mouse model. *J Immunol*. 2013;191:135-144.
- Nishikawa H, Maeda Y, Ishida T, et al. Cancer/testis antigens are novel targets of immunotherapy for adult T-cell leukemia/lymphoma. *Blood*. 2012;119:3097-3104.
- Choi I, Tanosaki R, Uike N, et al. Long-term outcomes after hematopoietic SCT for adult T-cell leukemia/lymphoma: results of prospective trials. *Bone Marrow Transplant*. 2011;46:116-118.
- Itonaga H, Tsushima H, Taguchi J, et al. Treatment of relapsed adult T-cell leukemia/lymphoma after allogeneic hematopoietic stem cell transplantation: the Nagasaki Transplant Group experience. *Blood*. 2013;121:219-225.
- Kanda J, Hishizawa M, Utsunomiya A, et al. Impact of graft-versus-host disease on outcomes after allogeneic hematopoietic cell transplantation for adult T-cell leukemia: a retrospective cohort study. *Blood*. 2012;119:2141-2148.
- Shimoyama M. Diagnostic criteria and classification of clinical subtypes of adult T-cell leukaemia-lymphoma: a report from the Lymphoma Study Group (1984-87). *Br J Haematol*. 1991;79:428-437.
- Przepiorka D, Weisdorf D, Martin P, et al. 1994 Consensus Conference on Acute GVHD Grading. *Bone Marrow Transplant*. 1995;15:825-828.
- Sullivan KM, Agura E, Anasetti C, et al. Chronic graft-versus-host disease and other late complications of bone marrow transplantation. *Semin Hematol*. 1991;28:250-259.
- Giralt S, Ballen K, Rizzo D, et al. Reduced-intensity conditioning regimen workshop: defining the dose spectrum. Report of a workshop convened by the Center for International Blood and Marrow Transplant Research. *Biol Blood Marrow Transplant*. 2009;15:367-369.
- Bacigalupo A, Ballen K, Rizzo D, et al. Defining the intensity of conditioning regimens: working definitions. *Biol Blood Marrow Transplant*. 2009;15:1628-1633.
- Gooley TA, Leisenring W, Crowley J, Storer BE. Estimation of failure probabilities in the presence of competing risks: new representations of old estimators. *Stat Med*. 1999;18:695-706.
- Anderson JR, Cain KC, Gelber RD. Analysis of survival by tumor response. *J Clin Oncol*. 1983;1:710-719.
- Daliri U. Landmark analysis at the 25-year landmark point. *Circ Cardiovasc Qual Outcomes*. 2011;4:363-371.
- Fine JP, Gray RJ. A proportional hazards model for subdistribution of a competing risk. *J Am Stat Assoc*. 1999;94:496-509.
- Cortese G, Andersen P. Competing risks and time-dependent covariates. *Biomed J*. 2010;52:138-158.
- Flowers ME, Inamoto Y, Carpenter PA, et al. Comparative analysis of risk factors for acute graft-versus-host disease and for chronic graft-versus-host disease according to National Institutes of Health consensus criteria. *Blood*. 2011;117:3214-3219.
- Jagasia M, Arora M, Flowers ME, et al. Risk factors for acute GVHD and survival after hematopoietic cell transplantation. *Blood*. 2012;119:296-307.
- Arora M, Pidala J, Cutler CS, et al. Impact of prior acute GVHD on chronic GVHD outcomes: a chronic graft versus host disease consortium study. *Leukemia*. 2013;27:1196-1201.
- Ozawa S, Nakaseko C, Nishimura M, et al. Chronic graft-versus-host disease after allogeneic bone marrow transplantation from an unrelated donor: incidence, risk factors and association with relapse. A report from the Japan Marrow Donor Program. *Br J Haematol*. 2007;137:142-151.
- Pidala J, Kurland B, Chai X, et al. Patient-reported quality of life is associated with severity of chronic graft-versus-host disease as measured by NIH criteria: report on baseline data from the Chronic GVHD Consortium. *Blood*. 2011;117:4651-4657.
- Yamamoto K, Utsunomiya A, Tobinai K, et al. Phase I study of KW-0761, a defucosylated humanized anti-CCR4 antibody, in relapsed patients with adult T-cell leukemia-lymphoma and peripheral T-cell lymphoma. *J Clin Oncol*. 2010;28:1591-1598.
- Ishida T, Joh T, Uike N, et al. Defucosylated anti-CCR4 monoclonal antibody (KW-0761) for relapsed adult T-cell leukemia-lymphoma: a multicenter phase II study. *J Clin Oncol*. 2012;30:837-842.

39. Ishida T, Ueda R. Antibody therapy for adult T-cell leukemia-lymphoma. *Int J Hematol*. 2011;94:443-452.
40. Tanosaki R, Tobinai K. Adult T-cell leukemia-lymphoma: current treatment strategies and novel immunological approaches. *Expert Rev Hematol*. 2010;3:743-753.
41. Ito Y, Miyamoto T, Chong Y, et al. Successful treatment with anti-CC chemokine receptor 4 MoAb of relapsed adult T-cell leukemia/lymphoma after umbilical cord blood transplantation. *Bone Marrow Transplant*. 2013;48:998-999.
42. Ishii T, Ishida T, Utsunomiya A, et al. Defucosylated humanized anti-CCR4 monoclonal antibody KW-0761 as a novel immunotherapeutic agent for adult T-cell leukemia/lymphoma. *Clin Cancer Res*. 2010;16:1520-1531.
43. Ishida T, Ueda R. Immunopathogenesis of lymphoma: focus on CCR4. *Cancer Sci*. 2011;102:44-50.
44. Ishida T, Ito A, Sato F, et al. Stevens-Johnson syndrome associated with mogamulizumab treatment of adult T-cell leukemia/lymphoma. *Cancer Sci*. 2013;104:647-650.
45. Mielke S, Rezvani K, Savani BN, et al. Reconstitution of FOXP3⁺ regulatory T cells (Tregs) after CD25-depleted allotransplantation in elderly patients and association with acute graft-versus-host disease. *Blood*. 2007;110:1689-1697.
46. Filipovich AH, Weisdorf D, Pavletic S, et al. National Institutes of Health consensus development project on criteria for clinical trials in chronic graft-versus-host disease, I: Diagnosis and Staging Working Group Report. *Biol Blood Marrow Transplant*. 2005;11:945-956.

Successful salvage therapy using lenalidomide in a patient with relapsed multiple myeloma after allogeneic hematopoietic stem cell transplantation

Tomotaka Suzuki · Shigeru Kusumoto · Tatsuya Yoshida · Fumiko Mori · Asahi Ito · Masaki Ri · Takashi Ishida · Hirokazu Komatsu · Akio Niimi · Shinsuke Iida

Received: 31 August 2012 / Revised: 18 February 2013 / Accepted: 19 February 2013 / Published online: 2 March 2013
© The Japanese Society of Hematology 2013

A 34-year-old Japanese man was diagnosed in 2008 as having stage III symptomatic multiple myeloma (IgD-lambda type) as defined by the Durie Salmon and International staging system. Chromosomal analysis revealed a normal karyotype, although overexpression of Cyclin D1 was detected by reverse-transcription/real-time polymerase chain reaction assay. After three cycles of induction chemotherapy with vincristine, doxorubicin, and dexamethasone, he received high-dose melphalan therapy with adjunct autologous peripheral blood stem cell transplantation (PBSCT). A very good partial response (VGPR) was achieved, although he relapsed at 11 months after PBSCT. Four cycles of bortezomib and dexamethasone therapy were subsequently given, resulting in a second VGPR. In March 2010, he underwent allogeneic bone marrow transplantation (BMT) from an HLA-matched unrelated donor. The conditioning regimen consisted of fludarabine (30 mg/m²/day on days -8 to -3) and intravenous busulfan (3.2 mg/kg/day on days -6 to -5) and total body irradiation (4 Gy on day -2). Prophylaxis for graft-versus-host disease (GVHD) included tacrolimus and short-term methotrexate. Neutrophil engraftment was observed on day 16 after BMT, and 92 % donor chimerism was confirmed in the bone marrow on day 32. He developed grade 1 skin GVHD on day 31, which resolved with topical corticosteroids. On day 120, as monoclonal IgD levels increased to 502 mg/dl, tacrolimus was reduced in dose to relieve immunosuppression. However, IgD levels continued to

increase up to 968 mg/dl 2 weeks later. Lenalidomide (Len) (10 mg/day per-oral [PO] for 21 days of a 28-day cycle) was then given on day 154. No symptoms of GVHD developed, and tacrolimus was discontinued before the second cycle of Len began. The patient's IgD levels promptly decreased, and after the fourth cycle of Len, the monoclonal protein was undetectable on immunofixation electrophoresis of serum and urine, which correlated with resolution of immunoparesis. On day 840, stringent complete remission was confirmed by serum-free light chain assay and bone marrow examination (Fig. 1).

As the patient relapsed just 4 months after allogeneic BMT, his myeloma cells were considered refractory to the prior treatment. However, Len alone was highly effective and has yielded a durable response for nearly 2 years without any serious adverse events. Currently, there is no standard regimen of Len as salvage treatment for patients with relapsed myeloma after allogeneic hematopoietic stem cell transplantation (HSCT) [1]. Len has direct anti-tumor and anti-angiogenic properties in addition to immunomodulatory effects including enhanced T cell and NK-cell activation [2], which could be clinically useful to enhance graft-versus-myeloma (GVM) effects.

The results of Len treatment for multiple myeloma using salvage or maintenance treatment following allogeneic HSCT are summarized in Table 1. Lioznov et al. retrospectively investigated the efficacy and toxicity of Len (25 mg/day or 15 mg/day PO on day 1 to 21 of a 28-day cycle) in 24 heavily pretreated patients who relapsed after allogeneic HSCT. They reported an overall response rate of 66 %, a median time to progression of 9.7 months and 13 % of patients developed mild grade 1–2 GVHD [3]. More recently, Coman et al. also reported the efficacy and tolerance of Len in 52 relapsed multiple myeloma patients after allogeneic HSCT. Most of these patients were treated

T. Suzuki · S. Kusumoto (✉) · T. Yoshida · F. Mori · A. Ito · M. Ri · T. Ishida · H. Komatsu · A. Niimi · S. Iida
Department of Medical Oncology and Immunology,
Nagoya City University Graduate School of Medical Sciences,
1 Kawasumi, Mizuho-chou, Mizuho-ku, Nagoya 467-8601, Japan
e-mail: skusumot@med.nagoya-cu.ac.jp

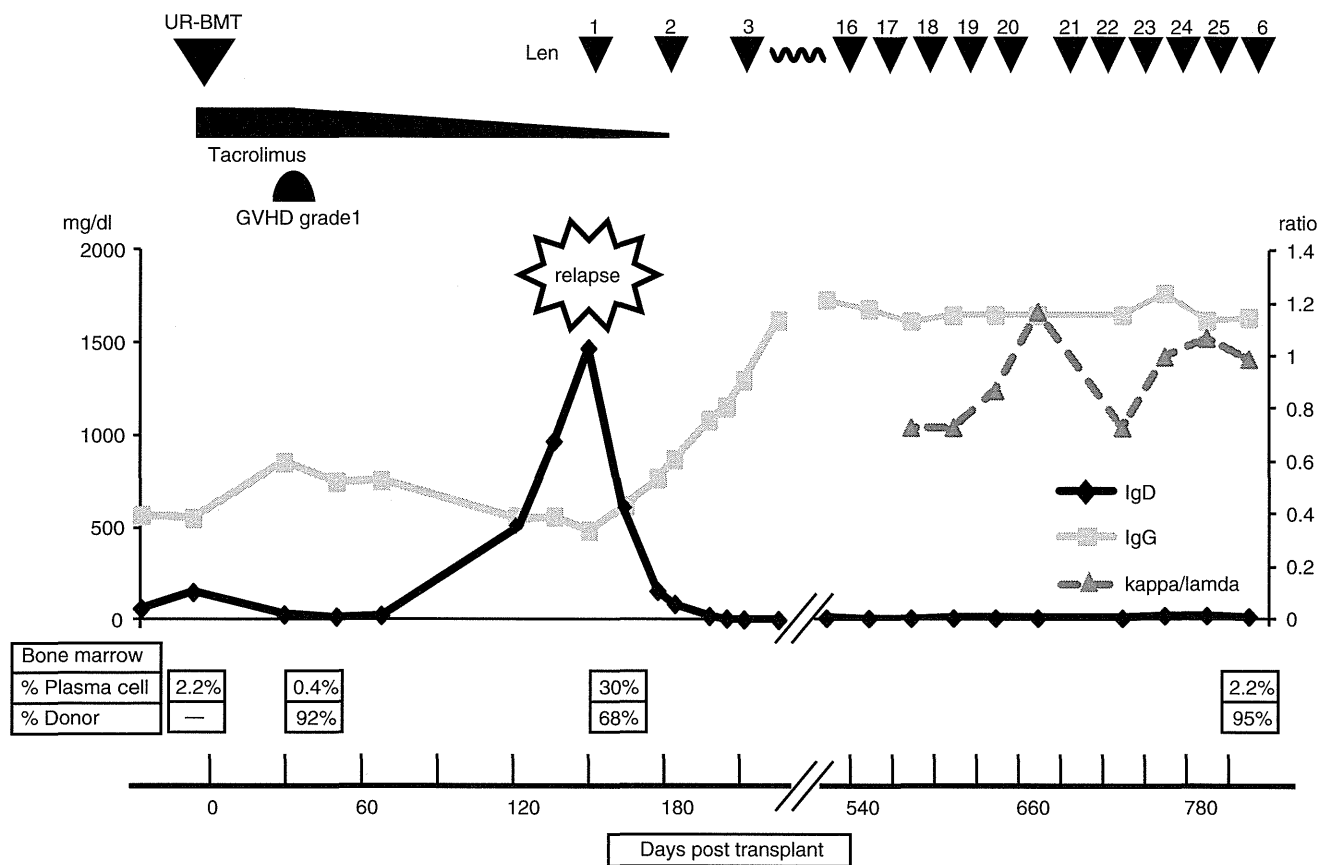


Fig. 1 Clinical course after allogeneic bone marrow transplantation. *UR-BMT* unrelated bone marrow transplantation, *Len* lenalidomide 10 mg/day PO on days 1–21 of a 28-day cycle, *GVHD* graft-versus-host disease

using a reduced intensity conditioning regimen and peripheral blood stem cells from HLA-matched sibling donor. In approximately 40 % of the transplants, *in vivo* T-cell depletion was conducted. Salvage treatment composed mainly of Len (25 mg/day) combined with dexamethasone (40 mg/day). With the median follow-up time of 16.3 months, the median progression-free survival (PFS) and overall survival were 18.0 and 30.5 months, respectively. In some cases, Len was discontinued due to the development of progressive diseases (44 %) and GVHD (22 %) [4]. As compared with the results of these two retrospective studies of salvage Len treatment, our case has an interesting clinical course that a relatively low dose of Len alone induced long-term complete remission even in a refractory myeloma patient.

The role of Len as maintenance treatment after allogeneic HSCT is controversial. The HOVON group investigated Len (10 mg/day PO on days 1–21 of a 28-day cycle) as maintenance treatment after allogeneic HSCT from an HLA-matched sibling donor in a prospective phase 2 study. Patients who developed acute GVHD of grade 2 or higher at the time of registration were excluded from the study. Because 37 % of the patients developed GVHD of grade 2

or higher, which was thought to correlate strongly with Len treatment, and the dropout rate was 43 %, it was concluded that Len was not feasible as maintenance therapy after allogeneic HSCT [5]. However, Kroger et al. reported that Len (median dose of 5 mg/day PO on days 1–21 of a 28-day cycle) is feasible as maintenance therapy after non-myeloablative allogeneic HSCT. Acute GVHD (grade 2–3) rate after Len administration and dropout rates due to toxicity were 28 and 30 %, respectively. Seven patients with partial responses and one patient with stable disease after transplantation achieved complete response after Len treatment and 3-year PFS was 52 % [6]. It is difficult to simply compare the results of these studies due to the different conditioning regimens used, GVHD prophylaxis, donor sources and start timing of Len treatment shown in Table 1.

Although in the current case report we used the same dose and schedule of Len monotherapy adopted by the HOVON group, long-term complete remission was obtained even in a patient with early relapsed myeloma after allogeneic HSCT. He did not experience any GVHD symptoms after Len, but we speculate that the GVM effects may have been enhanced by Len treatment. Further well-designed studies are warranted to evaluate optimal patient

Table 1 Summarized results of lenalidomide treatment for multiple myeloma using salvage or maintenance treatment following allogeneic transplantation

Author	Lioznov et al.	Coman et al.	Kneppers et al.	Kroger et al.
Study design	Retrospective	Retrospective	Prospective	Prospective
Total number of patient	$n = 24$	$n = 52$	$n = 30$	$n = 24$
Treatment setting of Len	Salvage	Salvage	Maintenance	Maintenance
Dose of Len	25 mg/day 83 %, 15 mg/day 17 %	25 mg/day 79 %, others 21 %	10 mg/day	Median 5 mg/day (range 5–15)
Combination of Dexamethasone	NA	Yes (77 %)	No	No
Median start time of Len	29 months ^a	24 months	3 months	6 months
After allo-HSCT		(range 1.0–97.0)	(range 1.0–6.8)	(range 2.8–15.3)
Donor source	Related 50 %	Matched sibling 77 %	Matched sibling 100 %	Matched sibling 18 %
PBSC	NA	PBSC 87 %	NA	PBSC 100 %
Conditioning intensity	NA	RIC 85 %	RIC 100 % (TBI 2 Gy)	MAC 100 %
Other	NA	In vivo T cell depletion 44 %	Unmanipulated graft	ATG 100 %
Median follow-up time	NA	16.3 months (range 3.7–49.6)	22 months (range 8–34)	19 months (range 3–58)
Median cycles of Len	5 (range 2–17)	6 (range 0.2–23)	3 (range 1–24)	6 (range 1–30)
PFS	Median 9.7 months	median 18 months	2 year estimated 60 %	3 year estimated 52 %
OS	median 19.9 months	Median 30.5 months	2 year estimated 93 %	3 year estimated 79 %
GVHD after Len	grade 2, 16 %	grade 1–2, 20 %; grade 3–4, 12 %	grade 2–3, 37 %	grade 2–3, 28 %
Discontinuation of Len	NA	52 % (27/52)	86 % (26/30)	54 % (13/24)
Reasons of discontinuation				
Progressive disease	NA	44 % (12/27)	20 % (5/26)	46 % (6/13)
GVHD	NA	22 % (6/27)	50 % (13/26)	23 % (3/13)
Other	NA	34 % (9/27)	30 % (8/26)	31 % (4/13)

Len lenalidomide, Dexamethasone, HSCT hematopoietic stem cell transplantation, PBSC peripheral blood stem cell, PFS progression free survival, OS overall survival, GVHD graft-versus-host disease, NA not available, RIC reduced intensity conditioning, MAC myeloablative conditioning, TBI total body irradiation, ATG anti-thymocyte globulin

^a Data as follows: the median interval between allo-HSCT and relapse was 18 months (range 2–71), the median interval between relapse after allo-HSCT and lenalidomide was 11 months (range 1–56)

selection, dosing and start timing of Len, in addition to combination drugs to establish safer and highly effective regimens after allogeneic HSCT. In conclusion, Len can be an attractive choice for salvage treatment of relapsed myeloma after allogeneic HSCT.

Conflict of interest SI has received research funding from Celgene Corporation.

References

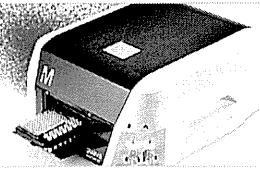
- Lokhorst H, Einsele H, Vesole D, Bruno B, San Miguel J, Pérez-Simon JA, et al. International Myeloma Working Group consensus statement regarding the current status of allogeneic stem-cell transplantation for multiple myeloma. *J Clin Oncol.* 2010;28:4521–30.
- Galustian C, Dalglish A. Lenalidomide: a novel anticancer drug with multiple modalities. *Expert Opin Pharmacother.* 2009;10:125–33.
- Lioznov M, El-Cheikh J Jr, Hoffmann F, Hildebrandt Y, Ayuk F, Wolschke C, et al. Lenalidomide as salvage therapy after allo-SCT for multiple myeloma is effective and leads to an increase of activated NK (NKp44(+)) and T (HLA-DR(+)) cells. *Bone Marrow Transplant.* 2010;45:349–53.
- Coman T, Bachy E, Michallet M, Socie' G, Uzunov M, Bourhis JH, et al. Lenalidomide as salvage treatment for multiple myeloma relapsing after allogeneic hematopoietic stem cell transplantation: a report from the SFGM-TC. *Haematologica.* 2012 Nov 9 [Epub ahead of print].
- Kneppers E, van der Holt B, Kersten MJ, Zweegman S, Meijer E, Huls G, et al. Lenalidomide maintenance after nonmyeloablative

- allogeneic stem cell transplantation in multiple myeloma is not feasible: results of the HOVON 76 Trial. *Blood*. 2011;118:2413–9.
6. Kröger N, Zabelina T, Klyuchnikov E, Kropff M, Pflüger KH, Burchert A, et al. Toxicity-reduced, myeloablative allograft followed by lenalidomide maintenance as salvage therapy for refractory/relapsed myeloma patients. *Bone Marrow Transplant*. 2012 Aug 6 [Epub ahead of print].



Unleash what's possible.
The guava easyCyte™ flow cytometer is here.

EMD Millipore is a division of Merck KGaA, Darmstadt, Germany



Autologous Tax-Specific CTL Therapy in a Primary Adult T Cell Leukemia/Lymphoma Cell-Bearing NOD/Shi-*scid*, IL-2R γ ^{null} Mouse Model

This information is current as of May 17, 2014.

Ayako Masaki, Takashi Ishida, Susumu Suzuki, Asahi Ito, Fumiko Mori, Fumihiko Sato, Tomoko Narita, Tomiko Yamada, Masaki Ri, Shigeru Kusumoto, Hirokazu Komatsu, Yuetsu Tanaka, Akio Niimi, Hiroshi Inagaki, Shinsuke Iida and Ryuzo Ueda

J Immunol 2013; 191:135-144; Prepublished online 3 June 2013;

doi: 10.4049/jimmunol.1202692

<http://www.jimmunol.org/content/191/1/135>

References This article **cites 44 articles**, 18 of which you can access for free at:
<http://www.jimmunol.org/content/191/1/135.full#ref-list-1>

Subscriptions Information about subscribing to *The Journal of Immunology* is online at:
<http://jimmunol.org/subscriptions>

Permissions Submit copyright permission requests at:
<http://www.aai.org/ji/copyright.html>

Email Alerts Receive free email-alerts when new articles cite this article. Sign up at:
<http://jimmunol.org/cgi/alerts/etoc>

The Journal of Immunology is published twice each month by
The American Association of Immunologists, Inc.,
9650 Rockville Pike, Bethesda, MD 20814-3994.
Copyright © 2013 by The American Association of
Immunologists, Inc. All rights reserved.
Print ISSN: 0022-1767 Online ISSN: 1550-6606.



Autologous Tax-Specific CTL Therapy in a Primary Adult T Cell Leukemia/Lymphoma Cell-Bearing NOD/Shi-*scid*, IL-2R γ^{null} Mouse Model

Ayako Masaki,* Takashi Ishida,* Susumu Suzuki,*[†] Asahi Ito,* Fumiko Mori,* Fumihiko Sato,*[‡] Tomoko Narita,* Tomiko Yamada,* Masaki Ri,* Shigeru Kusumoto,* Hirokazu Komatsu,* Yuetsu Tanaka,[§] Akio Niimi,* Hiroshi Inagaki,[‡] Shinsuke Iida,* and Ryuzo Ueda[†]

We expanded human T-lymphotropic virus type 1 Tax-specific CTL in vitro from PBMC of three individual adult T cell leukemia/lymphoma (ATL) patients and assessed their therapeutic potential in an in vivo model using NOG mice bearing primary ATL cells from the respective three patients (ATL/NOG). In these mice established with cells from a chronic-type patient, treatment by i.p. injection of autologous Tax-CTL resulted in greater infiltration of CD8-positive T cells into each ATL lesion. This was associated with a significant decrease of ATL cell infiltration into blood, spleen, and liver. Tax-CTL treatment also significantly decreased human soluble IL-2R concentrations in the sera. In another group of ATL/NOG mice, Tax-CTL treatment led to a significant prolongation of survival time. These findings show that Tax-CTL can infiltrate the tumor site, recognize, and kill autologous ATL cells in mice in vivo. In ATL/NOG mice with cells from an acute-type patient, whose postchemotherapeutic remission continued for >18 mo, antitumor efficacy of adoptive Tax-CTL therapy was also observed. However, in ATL/NOG mice from a different acute-type patient, whose ATL relapsed after 6 mo of remission, no efficacy was observed. Thus, although the therapeutic effects were different for different ATL patients, to the best of our knowledge, this is the first report that adoptive therapy with Ag-specific CTL expanded from a cancer patient confers antitumor effects, leading to significant survival benefit for autologous primary cancer cell-bearing mice in vivo. The present study contributes to research on adoptive CTL therapy, which should be applicable to several types of cancer. *The Journal of Immunology*, 2013, 191: 135–144.

Adult T cell leukemia/lymphoma (ATL) is a distinct hematologic malignancy caused by human T-lymphotropic virus type 1 (HTLV-1) (1–4). ATL patients have a very poor prognosis for which no standard treatment strategy is available (5, 6). Over the last decade, allogeneic hematopoietic stem cell transplantation has evolved into a potential approach to treat ATL patients. However, only a small fraction of patients can benefit from transplantation, such as those who are younger, have achieved sufficient disease control, and have an appropriate stem

cell source (7, 8). Therefore, the development of alternative treatment strategies for ATL patients is an urgent issue.

HTLV-1 Tax, a virus-encoded regulatory gene product, is required for the virus to transform cells (9) and is thought to be indispensable for oncogenesis. Therefore, Tax has been considered as a molecular target for immunotherapy against ATL (10–14). However, it was reported that the level of Tax expression in HTLV-1-infected cells decreases during disease progression, and Tax transcripts are detected only in ~40% of established ATL cases (15). Moreover, weak or absent responses to Tax were observed in ATL patients (16), leading to controversy as to whether Tax is an appropriate target for immunotherapy of ATL. In this context, we have recently reported the potential relevance of Tax as a target for ATL immunotherapy. Tax-specific CTL recognized HLA/Tax-peptide complexes on autologous ATL cells and killed them, even when their Tax expression was so low that it could only be detected by RT-PCR but not at the protein level in vitro (17). However, in general, tumors develop in a complex and dynamic microenvironment in humans (18–20). Therefore, antitumor activities of cancer-specific CTL should be evaluated under conditions including the cancer microenvironment. In addition, susceptibility to CTL is different in established cell lines and primary tumor cells isolated directly ex vivo from patients, especially autologous tumor cells, with the latter certainly being most relevant for evaluating antitumor effects of CTL. Based on these considerations, we expanded Tax-specific CTL in vitro from PBMC of ATL patients and tested in this study the potential significance of Tax as a target for ATL immunotherapy in an in vivo model consisting of NOD/Shi-*scid*, IL-2R γ^{null} (NOG) mice (21) bearing the autologous primary ATL cells (ATL/NOG).

*Department of Medical Oncology and Immunology, Nagoya City University Graduate School of Medical Sciences, Aichi 467-8601, Japan; [†]Department of Tumor Immunology, Aichi Medical University School of Medicine, Aichi 480-1195, Japan; [‡]Department of Anatomic Pathology and Molecular Diagnostics, Nagoya City University Graduate School of Medical Sciences, Aichi 467-8601, Japan; and [§]Department of Immunology, University of the Ryukyus, Okinawa, 903-0215, Japan

Received for publication September 26, 2012. Accepted for publication May 1, 2013.

This work was supported by Grants-in-Aid for Young Scientists (A) (22689029 to T.I.), Scientific Research (B) (22300333 to T.I. and R.U.), and Scientific Support Programs for Cancer Research (221S0001 to T.I.) from the Ministry of Education, Culture, Sports, Science and Technology of Japan, Grants-in-Aid from the National Cancer Center Research and Development Fund (23-A-17 to T.I.), and Health and Labour Sciences Research Grants (H22-Clinical Cancer Research-General-028 to T.I. and H23-Third Term Comprehensive Control Research for Cancer-General-011 to T.I. and H.I.) from the Ministry of Health, Labour and Welfare, Japan.

Address correspondence and reprint requests to Dr. Takashi Ishida, Department of Medical Oncology and Immunology, Nagoya City University Graduate School of Medical Sciences, 1 Kawasumi, Mizuho-chou, Mizuho-ku, Nagoya, Aichi 467-8601, Japan. E-mail address: itakashi@med.nagoya-cu.ac.jp

Abbreviations used in this article: ATL, adult T cell leukemia/lymphoma; FSC-H, forward light scatter-height; HTLV-1, human T-lymphotropic virus type 1; sIL-2R, soluble IL-2R; SSC, side scatter-height; Treg, regulatory T.

Copyright © 2013 by The American Association of Immunologists, Inc. 0022-1767/13/\$16.00

www.jimmunol.org/cgi/doi/10.4049/jimmunol.1202692

Materials and Methods

Primary human cells

Primary ATL cells were obtained from three individual patients of which patient 1 had chronic-type and patients 2 and 3 were acute. Diagnosis and classification of clinical subtypes of ATL was according to the criteria proposed by the Japan Lymphoma Study Group (22). Mononuclear cells were isolated from blood or lymph node cells with Ficoll-Paque (Pharmacia, NJ). Primary ATL cells were separated using anti-human CD4 microbeads (Miltenyi Biotec, Bergisch Gladbach, Germany) by means of an autoMACS Pro (Miltenyi Biotec). Genotyping of HLA-A, -B, and -C was performed using an HLA-typing Kit (WAKFlow HLA-typing kit; Wakunaga Pharmacy, Hiroshima, Japan). The disease activity of patient 1 was stable; this patient had been carefully observed under a wait-and-see policy for ~4 y prior to sampling. Both patients 2 and 3 received systemic chemotherapies and achieved complete remissions. Patient 2 remained in remission for >18 mo, but in patient 3, ATL relapsed after only 6 mo in remission. Thus, patient 3 subsequently again received systemic chemotherapy for his relapsed ATL. In patients 2 and 3, primary ATL cells were obtained at first diagnosis, and PBMC for CTL expansion were obtained in remission. They were cryopreserved until use. All donors provided informed written consent before sampling according to the Declaration of Helsinki, and the current study was approved by the institutional ethics committees of Nagoya City University Graduate School of Medical Sciences.

Cell lines

ATN-1, MT-1, and TL-Om1 are ATL cell lines, TL-Su, TCL-Kan, and MT-4 are HTLV-1-immortalized lines, and K562 is a chronic myelogenous leukemia blast crisis cell line, as previously described (17).

Expansion of HTLV-1 Tax-specific CTL

PBMC from the ATL patients were suspended in RPMI 1640 (Cell Science and Technology Institute, Sendai, Japan) supplemented with 10% human serum and 0.1 μ M Tax epitope peptide (LLFGYPVYV or SFHSLHLLF; Invitrogen, Carlsbad, CA) at a cell concentration of 2.0×10^6 /ml. The cells were cultured at 37°C in 5% CO₂ for 2 d, and then an equal volume of RPMI 1640 supplemented with 100 IU/ml IL-2 was added. After subsequent culture for 5 d, an equal volume of ALyS505N (Cell Science and Technology Institute) supplemented with 100 IU/ml IL-2 was added, and the cells were cultured with appropriate medium (ALyS505N with 100 IU/ml IL-2) for 7 d.

Abs, tetramers, and flow cytometry

PE-conjugated HLA-A*02:01/Tax11–19 (LLFGYPVYV) and HLA-A*24:02/Tax301–309 (SFHSLHLLF) tetramers and PE-Cy5-conjugated anti-CD8 mAb (clone, SFC121Thy2D3) were purchased from MBL (Nagoya, Japan). PE-Cy5-conjugated anti-CD4 mAb (13B8.2) was purchased from Beckman Coulter (Luton, U.K.). Allophycocyanin-conjugated anti-human CD45 mAb (2D1), PE-conjugated anti-CD25 mAb (M-A251), PerCP-conjugated anti-CD4 mAb (SK3), and MultiTEST CD3 FITC/CD8 PE/CD45 PerCP/CD4 APC Reagent were purchased from BD Biosciences (San Jose, CA). For assessing Tax expression, cells were fixed with 10% formaldehyde and then stained with FITC-conjugated anti-Tax mAb Lt-4 (23) or isotype control Ab (A112-3; BD Biosciences), with 0.25% saponin (Sigma-Aldrich, Tokyo, Japan) for 60 min at room temperature. For intracellular IFN- γ staining, the expanded cells including Tax-CTL were cocultured with target cells at 37°C in 5% CO₂ for 2 h after which brefeldin A (BD Biosciences) was added at 2 μ g/ml. The cells were then incubated for a further 2 h. Subsequently, they were fixed in 10% formaldehyde and then stained with FITC-conjugated anti-IFN- γ mAb (45.15; MBL) with 0.25% saponin for 60 min at room temperature. Cells were analyzed on a FACSCalibur (BD Biosciences) with the aid of FlowJo software (Tree Star, Ashland, OR).

Quantitative RT-PCR

Total RNA was isolated with RNeasy Mini Kits (Qiagen, Tokyo, Japan). Reverse transcription from the RNA to first-strand cDNA was carried out using High Capacity RNA-to-cDNA Kits (Applied Biosystems, Foster City, CA). Tax and β -actin mRNA were amplified using TaqMan Gene Expression Assays with the aid of an Applied Biosystems StepOnePlus. The primer set for Tax was as follows: sense, 5'-AAGACCACCAACACCA-TGGC-3', and antisense, 5'-CCAAACACGTAGACTGGGTATCC-3'. All values given are means of triplicate determinations.

Animals

NOG mice were purchased from the Central Institute for Experimental Animals and used at 6–8 wk of age. All of the in vivo experiments were

performed in accordance with the United Kingdom Coordinating Committee on Cancer Research Guidelines for the Welfare of Animals in Experimental Neoplasia, Second Edition, and were approved by the Ethics Committee of the Center for Experimental Animal Science, Nagoya City University Graduate School of Medical Sciences.

ATL tumor-bearing mouse model, therapeutic setting

CD4-positive primary ATL cells were separated from PBMC of patient 1 and suspended at 1×10^7 cells per 0.2 ml RPMI 1640, which were i.p. inoculated into each of 20 NOG mice. The inoculated ATL cells consisted of pooled cells from several blood samplings. The primary ATL-bearing mice were divided into two groups of 10 each. One group was used for evaluation of ATL cell organ infiltration and to measure levels of human soluble IL-2R (sIL-2R) in sera using the human sIL-2R immunoassay kit (R&D Systems, Minneapolis, MN) 27 d after tumor inoculation. The other group was used for evaluation of survival. Each group was further divided into two groups of five each for autologous Tax-CTL or control (0.2 ml RPMI 1640) injections. Autologous Tax-CTL suspended in 0.2 ml RPMI 1640 were i.p. injected 2 (mononuclear cells, 4.59×10^6 /mouse; CD8-positive and HLA-A*24:02/Tax 301–309 tetramer-positive cells, 7.89×10^5 /mouse), 7 (3.57×10^6 ; 9.71×10^5), 12 (3.26×10^6 ; 5.49×10^5), 20 (3.12×10^6 ; 5.48×10^5), and 23 d (2.51×10^6 ; 4.22×10^5) after ATL cell inoculations. Control RPMI 1640 was i.p. injected in the same manner.

PBMC of patient 2, consisting of ~80% of CD4⁺CD25⁺ ATL cells, were suspended in 0.2 ml of RPMI 1640 and i.p. inoculated into each of six NOG mice. The primary ATL-bearing mice were divided into two groups of three each for autologous Tax-CTL or control injections. Autologous Tax-CTL suspended in 0.2 ml RPMI 1640 were i.p. injected 2 (mononuclear cells, 7.50×10^6 /mouse; CD8-positive and HLA-A*24:02/Tax 301–309 tetramer-positive cells, 18.1×10^5 /mouse), 7 (6.75×10^6 ; 22.3×10^5), 14 (5.95×10^6 ; 20.7×10^5), 21 (5.70×10^6 ; 22.3×10^5), and 23 d (6.04×10^6 ; 21.3×10^5) after ATL cell inoculations. Control RPMI 1640 was i.p. injected in the same manner. The infiltration of ATL cells into the organs, and the levels of human sIL-2R in the sera 31 d after tumor inoculation were determined.

Lymph node cells of patient 3, consisting of ~90% CD4⁺CD25⁺ ATL cells, were i.p. inoculated into each of six NOG mice in the same manner as for patient 2. Autologous Tax-CTL suspended in 0.2 ml RPMI 1640 were i.p. injected 2 (mononuclear cells, 10.3×10^6 /mouse; CD8-positive and HLA-A*24:02/Tax 301–309 tetramer-positive cells, 2.08×10^5 /mouse), 7 (5.73×10^6 ; 7.53×10^5), and 29 d (18.8×10^6 ; 16.1×10^5) after tumor cell inoculations. Control RPMI 1640 was i.p. injected in the same manner. The infiltration of ATL cells into the organs and the levels of human sIL-2R in the sera 33 d after tumor inoculation were determined.

Immunopathological analysis

H&E staining and immunostaining by anti-CD4 (4B12; Novocastra, Wetzlar, Germany), CD25 (4C9; Novocastra), and CD8 (C8/144B; DakoCytomation, Glostrup, Denmark) was performed on formalin-fixed, paraffin-embedded sections, using a Bond-Max autostainer (Leica Microsystems, Wetzlar, Germany) with the Bond polymer refine detection kit (Leica Microsystems).

Statistical analysis

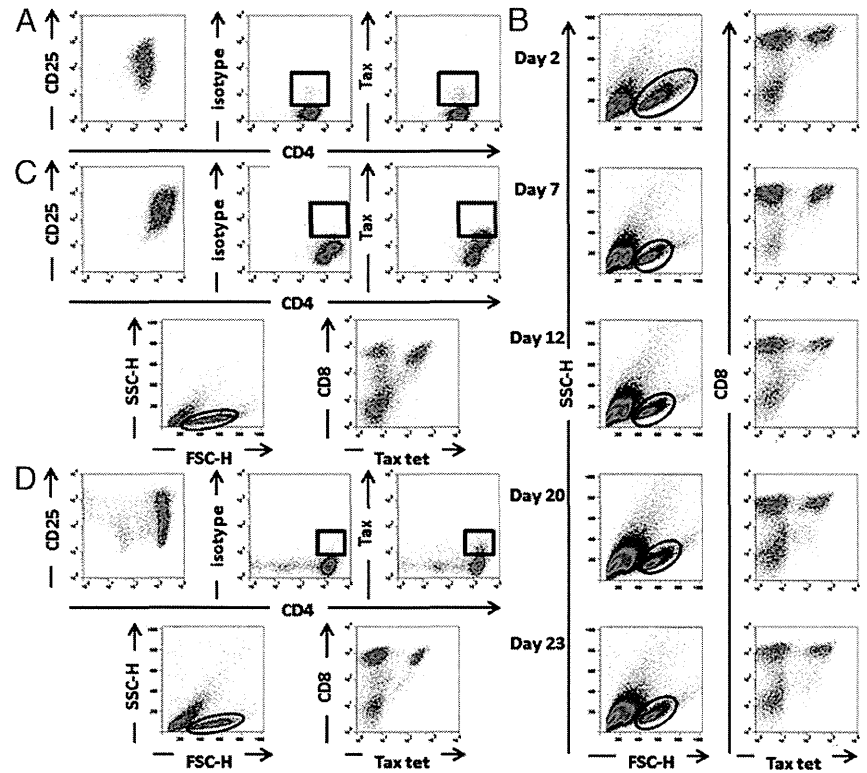
The differences between groups regarding the percentage of ATL cells in mouse whole blood cells, liver, and spleen cell suspensions and human sIL-2R concentrations in the serum were examined with the Mann-Whitney *U* test. Survival analysis was done by the Kaplan-Meier method, and survival curves were compared using the log-rank test. All analyses were performed with SPSS Statistics 17.0 (SPSS, Chicago, IL). In this study, *p* = 0.05 was considered significant.

Results

Tax expression in ATL cells from patients

The inoculated primary ATL cells from all three patients were positive for CD4 and CD25 (Fig. 1A, left panel, Fig. 1C, 1D, top left panels). Tax proteins were weakly detected in a subpopulation of ATL cells from all patients by flow cytometry (Fig. 1A, right two panels, and Fig. 1C, 1D, top right two panels). The Tax/human β -actin mRNA levels of the ATL cells from patients 1, 2, and 3, were 0.192 ± 0.005 (SD), 0.492 ± 0.054 , and 0.080 ± 0.009 , respectively, when the value of TL-Su was set at unity as previously described (17) (Fig. 2D). Although the short time of in vitro culture changes the expression levels of Tax in primary ATL cells (17, 24), the result presented in this study was obtained at the same time as

FIGURE 1. Inoculated primary ATL cells and adoptively transferred Tax-specific CTL. **(A)** The inoculated primary ATL cells from patient 1 were positive for CD4 and CD25 (left panel). Tax protein was weakly detected in a subpopulation of ATL cells (middle and right panels). **(B)** Autologous adoptively transferred Tax-CTL from patient 1 at days 2, 7, 12, 20, and 23, respectively, are presented. The lymphocyte population is determined by FSC-H and SSC-H levels (left panels) and plotted to show CD8 and HLA-A*24:02/Tax tetramer positivity (right panel). **(C)** The inoculated primary ATL cells from patient 2 were positive for CD4 and CD25 (top left panel). Tax protein was weakly detected in a subpopulation of ATL cells (top right two panels). Autologous adoptively transferred Tax-CTL from patient 2 are presented. Lymphocyte population is determined by FSC-H and SSC-H levels (bottom left panel) and plotted to show CD8 and HLA-A*02:01/Tax tetramer positivity (bottom right panel). **(D)** The inoculated primary ATL cells from patient 3 were positive for CD4 and CD25 (top left panel). Tax protein was weakly detected in a subpopulation of ATL cells (top right two panels). Autologous adoptively transferred Tax-CTL from patient 3 are presented. Lymphocyte population is determined by FSC-H and SSC-H levels (bottom left panel) and plotted to show CD8 and HLA-A*24:02/Tax tetramer positivity (bottom right panel).



the *in vitro* experiments were performed, showing Tax-specific CTL responses against autologous ATL cells (Fig. 2A–C).

Adoptively transferred autologous Tax-specific CTL

Flow cytometric analyses of the expanded and adoptively transferred Tax-CTL of patient 1 at days 2, 7, 12, 20, and 23 are presented. The lymphocyte population was identified by forward light scatter-height (FSC-H) and side scatter-height (SSC-H) values (Fig. 1B, left panels) and is plotted to show CD8 and HLA-A*24:02/Tax tetramer-positivity (Fig. 1B, right panel). Adoptively transferred Tax-CTL from patients 2 and 3 are also shown in Fig. 1C and 1D, bottom panels, respectively.

Tax-specific CTL responses against autologous ATL cells *in vitro*

The adoptively transferred Tax-CTL from patient 1 were cocultured with autologous ATL cells, ATL cell lines, HTLV-1-immortalized lines, or K562, and their responses were evaluated by IFN- γ production *in vitro* (Fig. 2A, 2D). HLA-A*24:02/Tax301–309 tetramer-positive fractions of these expanded CD8-positive cells produced IFN- γ when cocultured with autologous ATL cells, TL-Su, or ATN-1. These tetramer-positive cells did not respond to MT-1, MT-4, or TCL-Kan. These results indicate that only target cells having both HLA-A*24:02 and Tax were recognized. The tetramer-negative fractions of these expanded CD8-positive cells also produced IFN- γ when stimulated with autologous ATL cells. This suggests that they recognize unidentified Tax-derived epitopes, Ags derived from HTLV-1 components other than Tax, or ATL-related tumor Ags not of viral origin such as cancer testis Ags (25). The tetramer-negative fractions of these expanded CD8-positive cells also produced IFN- γ when stimulated with TCL-Kan. Because both patient 1 and TCL-Kan share HLA-A*02:07, -B*46:01, and -C*01:02, the tetramer-negative cells might be recognizing unidentified Tax-derived epitopes, other HTLV-1 Ags or ATL tumor Ag-derived epitopes presented on a different shared MHC allele. These effector cells did not

respond to K562 by IFN- γ production, showing that they had no NK activity.

The adoptively transferred Tax-CTL from patient 2 were tested next. HLA-A*02:01/Tax11–19 tetramer-positive fractions of these expanded CD8-positive cells specifically produced IFN- γ when stimulated with 0.1 μ M of the corresponding peptide. These cells also respond to target cells including autologous ATL cells in a manner restricted by Tax expression and the appropriate HLA type as did patient 1 (Fig. 2B, 2D).

The adoptively transferred Tax-CTL from patient 3 were also tested. Although HLA-A*24:02/Tax301–309 tetramer-positive fractions of these expanded CD8-positive cells responded to TL-Su and the corresponding peptide by producing IFN- γ , they did not respond to autologous ATL cells or ATN-1, the Tax expression of which was relatively low (Fig. 2C, 2D).

Macroscopic findings in ATL/NOG mice with cells from patient 1 treated or not treated with adoptive autologous Tax-CTL

Ten primary ATL cell-bearing mice were evaluated for the efficacy of treatment by adoptive transfer of autologous Tax-CTL. The appearance of the mice treated with Tax-CTL and of the controls is shown in Fig. 3, top and bottom panels, respectively. In general, spleens were much more enlarged in the control mice than in the CTL-treated mice.

Flow cytometric analyses of infiltrating ATL cells in organs of ATL/NOG mice with cells from patient 1

The percentage of CD4-positive ATL cells in whole blood of control NOG mouse 1 was 0.57% (i.e., 0.57% [human CD45-positive population] \times 100.0% [human CD4-positive CD8-negative cells] = 0.57%). In control NOG mice 2, 3, 4, and 5 and in Tax-CTL-treated NOG mice 1, 2, 3, 4, and 5, the percentages of ATL cells in whole blood, calculated in the same manner, were 1.57, 2.53, 0.18, and 0.94% and 0.22, 0.17, 0.01, 0.59, and 0.02%, respectively (Fig. 4A). Thus, Tax-CTL treatment significantly reduced the percentage of ATL cells present in the blood of these mice ($p = 0.047$; Fig. 5A, left panel).