

Figure S2

Relative change of mRNA levels following *PDE12* knockdown.

HeLa cells were transfected with siRNA targeted against *PDE12*. Four days after transfection, total RNA was extracted. mRNAs for *PDE12*, *COX1*, *CYTB*, *ATP8/6* and *ND5* were quantified by qRT-PCR. The relative change in each mRNA level upon *PDE12* knockdown was normalized by *GAPDH* mRNA level, and compared with that in HeLa cells transfected with siRNA targeting *luciferase* (as a control). The primers are listed in Table S1.

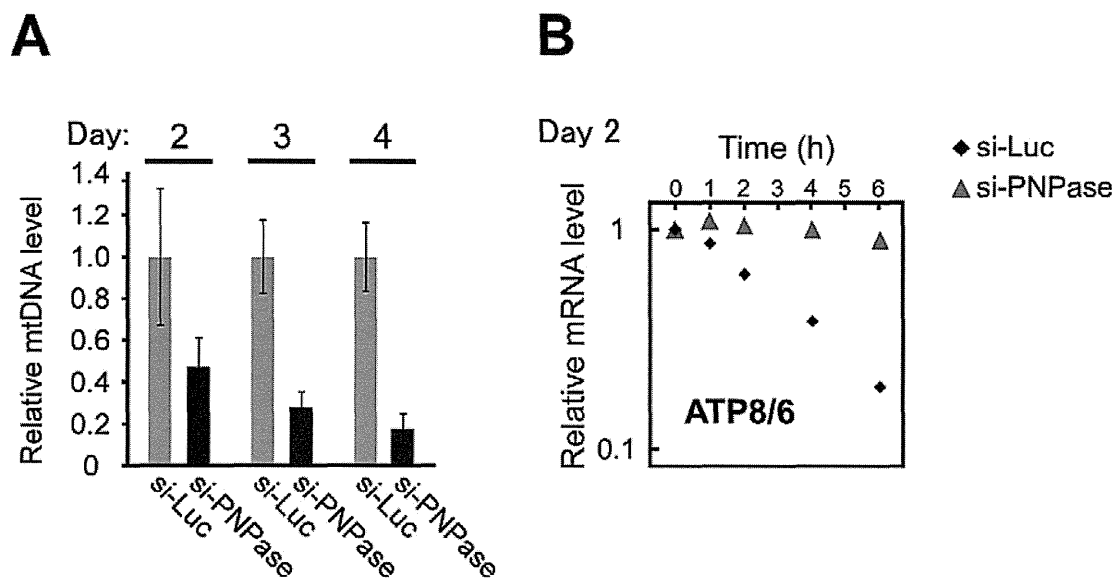


Figure S3

Effects of *PNPase* knockdown

(A) Relative change of mtDNA level (means \pm s.d., n=3) following *PNPase* knockdown. HeLa cells were transfected with siRNA targeted against *luciferase* or *PNPase*. Two, three or four days after transfection, total DNA was extracted. mtDNA levels were analyzed by qPCR and normalized by 18S rDNA levels. The relative change in mtDNA level upon *PNPase* knockdown was compared with that in HeLa cells transfected with siRNA targeting *Luciferase*.

(B) Decay of *ATP8/6* mRNA in HeLa cells after two days of *PNPase* knockdown. HeLa cells were transfected with siRNA targeted against *luciferase* or *PNPase*. Two days after siRNA transfection, mitochondrial transcription was inhibited for 0, 1, 2, 4, or 6 hours, total RNA was collected, and mRNA was quantified by qRT-PCR. All data were normalized to *GAPDH* mRNA. The vertical axis represents the relative mRNA level in logarithmic scale. The steady-state level of *PNPase* mRNA decreased to 5.3% of that in the control cells upon siRNA-mediated knockdown.

