

Supplementary Table III

	Logistic Euroscore <5%		Logistic Euroscore ≥5%	
	CKD(-)	CKD(+)	CKD(-)	CKD(+)
Age <75 y				
LMT (bifurcation)				
DM(-)				
LVEF >35%	U(4)	I(3)	U(5)	U(5)
LVEF ≤35%	I(3)	I(2)	U(5)	U(4)
DM(+)				
LVEF >35%	I(3)	I(2)	U(5)	U(5)
LVEF ≤35%	I(2)	I(2)	U(5)	U(4)
LMT (ostium or body)				
DM(-)				
LVEF >35%	D	D	A(7)	A(7)
LVEF ≤35%	U(5)	U(4)	A(7)	U(6)
DM(+)				
LVEF >35%	D	D	A(7)	A(7)
LVEF ≤35%	U(4)	U(4)	A(7)	U(6)
Age ≥ 75 years				
LMT (bifurcation)				
DM(-)				
LVEF >35%	U(4)	I(3)	A(7)	U(5)
LVEF ≤35%	I(3)	I(2)	A(7)	U(5)
DM(+)				
LVEF >35%	U(4)	I(3)	A(7)	U(5)
LVEF ≤35%	I(3)	I(2)	A(7)	U(5)
LMT (ostium or body)				
DM(-)				
LVEF >35%	A(7)	A(7)	A(8)	A(7)
LVEF ≤35%	U(6)	U(5)	A(7)	A(7)
DM(+)				
LVEF >35%	A(7)	A(7)	A(8)	A(7)
LVEF ≤35%	U(6)	U(5)	A(7)	A(7)

Supplementary Table IV

	Logistic Euroscore <5%		Logistic Euroscore ≥5%	
	CKD(-)	CKD(+)	CKD(≤)	CKD(+)
Age <75 y				
LMT (bifurcation)				
DM(-)				
LVEF >35%	U(4)	I(3)	U(6)	U(5)
LVEF ≤35%	I(3)	I(2)	U(6)	U(5)
DM(+)				
LVEF >35%	D	I(2)	U(6)	U(5)
LVEF ≤35%	I(2)	I(2)	U(6)	U(5)
LMT (ostium or body)				
DM(-)				
LVEF >35%	D	D	A(7)	A(7)
LVEF ≤35%	U(5)	U(5)	A(7)	U(6)
DM(+)				
LVEF >35%	D	D	A(7)	A(7)
LVEF ≤35%	U(5)	U(4)	A(7)	U(6)
Age ≥ 75 years				
LMT (bifurcation)				
DM(-)				
LVEF >35%	U(4)	I(3)	A(7)	U(6)
LVEF ≤35%	I(3)	I(2)	A(7)	U(5)
DM(+)				
LVEF >35%	U(4)	I(3)	A(7)	U(6)
LVEF ≤35%	I(3)	I(2)	A(7)	U(5)
LMT (ostium or body)				
DM(-)				
LVEF >35%	A(7)	A(7)	A(8)	A(8)
LVEF ≤35%	U(6)	U(5)	A(8)	A(7)
DM(+)				
LVEF >35%	A(7)	I(6)	A(8)	A(8)
LVEF ≤35%	U(6)	U(5)	A(8)	A(7)

Supplementary Table V

	Logistic Euroscore <5%		Logistic Euroscore ≥5%	
	CKD(-)	CKD(+)	CKD(-)	CKD(+)
Noninvasive test positive				
3-vessel CAD including proximal LAD				
DM(-)				
LVEF >35%	A(7)	D	A(7)	D
LVEF ≤35%	A(7)	I(3)	A(7)	D
DM(+)				
LVEF >35%	A(7)	I(3)	A(7)	D
LVEF ≤35%	U(6)	I(3)	A(7)	D
3-vessel CAD without proximal LAD				
DM(-)				
LVEF >35%	A(8)	D	A(8)	D
LVEF ≤35%	A(7)	U(5)	A(7)	D
DM(+)				
LVEF >35%	A(7)	U(4)	A(8)	D
LVEF ≤35%	A(7)	U(4)	A(7)	D
Noninvasive test negative or not performed				
3-vessel CAD including proximal LAD				
DM(-)				
LVEF >35%	D	I(3)	U(6)	U(5)
LVEF ≤35%	D	I(3)	U(6)	U(4)
DM(+)				
LVEF >35%	D	I(3)	U(6)	U(4)
LVEF ≤35%	U(5)	I(3)	U(6)	U(3)
3-vessel CAD without proximal LAD				
DM(-)				
LVEF >35%	D	U(4)	U(6)	U(6)
LVEF ≤35%	D	I(3)	U(6)	U(4)
DM(+)				
LVEF >35%	D	I(3)	U(6)	U(4)
LVEF ≤35%	U(6)	I(3)	U(6)	I(3)

Abbreviation: LAD, Left anterior descending.

Supplementary Table VI

	Logistic Euroscore <5%		Logistic Euroscore ≥5%	
	CKD(-)	CKD(+)	CKD(-)	CKD(+)
3-vessel CAD including proximal LAD				
DM(-)				
LVEF >35%	A(7)	D	A(7)	D
LVEF ≤35%	A(7)	I(3)	A(7)	D
DM(+)				
LVEF >35%	A(7)	I(3)	A(7)	D
LVEF ≤35%	U(6)	I(3)	A(7)	D
3-vessel CAD without proximal LAD				
DM(-)				
LVEF >35%	A(8)	D	A(8)	D
LVEF ≤35%	A(7)	U(4)	A(8)	D
DM(+)				
LVEF >35%	A(7)	D	A(8)	D
LVEF ≤35%	U(6)	U(4)	A(8)	D

Supplementary Table VII

	Logistic Euroscore <5%		Logistic Euroscore ≥5%	
	CKD(-)	CKD(+)	CKD(-)	CKD(+)
3-vessel CAD including proximal LAD				
DM(-)				
LVEF >35%	A(7)	U(6)	A(8)	A(7)
LVEF ≤35%	A(8)	A(7)	A(8)	A(7)
DM(+)				
LVEF >35%	A(7)	U(6)	A(7)	U(6)
LVEF ≤35%	A(7)	D	A(8)	A(7)
3-vessel CAD without proximal LAD				
DM(-)				
LVEF >35%	A(8)	A(7)	A(8)	A(7)
LVEF ≤35%	A(8)	A(7)	A(8)	A(7)
DM(+)				
LVEF >35%	A(8)	A(7)	A(8)	A(7)
LVEF ≤35%	A(8)	A(7)	A(8)	A(7)

Supplementary Table VIII

	Logistic Euroscore <5%		Logistic Euroscore ≥5%	
	CKD(-)	CKD(+)	CKD(-)	CKD(+)
3-vessel CAD including proximal LAD				
DM(-)				
LVEF >35%	D	U(4)	U(6)	U(5)
LVEF ≤35%	D	D	U(5)	D
DM(+)				
LVEF >35%	D	I(3)	U(5)	U(5)
LVEF ≤35%	D	I(3)	U(5)	D
3-vessel CAD without proximal LAD				
DM(-)				
LVEF >35%	D	U(4)	D	U(5)
LVEF ≤35%	D	D	D	D
DM(+)				
LVEF >35%	D	I(3)	D	U(4)
LVEF ≤35%	D	D	D	D

Supplementary Table X

	Logistic Euroscore <5%		Logistic Euroscore ≥5%	
	CKD(-)	CKD(+)	CKD(-)	CKD(+)
3-vessel CAD including proximal LAD				
DM(-)				
LVEF >35%	A(7)	U(6)	A(8)	A(7)
LVEF ≤35%	A(7)	U(6)	A(8)	A(7)
DM(+)				
LVEF >35%	A(7)	U(6)	A(7)	U(6)
LVEF ≤35%	U(6)	U(6)	A(8)	A(7)
3-vessel CAD without proximal LAD				
DM(-)				
LVEF >35%	A(8)	A(7)	A(8)	A(8)
LVEF ≤35%	A(8)	A(7)	A(8)	A(7)
DM(+)				
LVEF >35%	A(8)	A(7)	A(8)	A(7)
LVEF ≤35%	A(7)	A(7)	A(8)	A(7)

Supplementary Table IX

	Logistic Euroscore <5%		Logistic Euroscore ≥5%	
	CKD(-)	CKD(+)	CKD(-)	CKD(+)
3-vessel CAD including proximal LAD				
DM(-)				
LVEF >35%	A(7)	U(6)	A(8)	A(7)
LVEF ≤35%	A(8)	A(7)	A(8)	A(7)
DM(+)				
LVEF >35%	A(7)	U(6)	A(7)	U(6)
LVEF ≤35%	U(6)	D	A(8)	A(7)
3-vessel CAD without proximal LAD				
DM(-)				
LVEF >35%	A(8)	A(7)	A(8)	A(8)
LVEF ≤35%	A(8)	A(7)	A(8)	A(7)
DM(+)				
LVEF >35%	A(8)	A(7)	A(8)	A(7)
LVEF ≤35%	A(7)	A(7)	A(8)	A(7)

Supplementary Table XI

	Logistic Euroscore <5%		Logistic Euroscore ≥5%	
	CKD(-)	CKD(+)	CKD(-)	CKD(+)
2-vessel CAD including proximal LAD				
DM(-)				
LVEF >35%	A(8)	D	A(8)	D
LVEF ≤35%	A(7)	U(4)	A(8)	D
DM(+)				
LVEF >35%	A(7)	U(4)	A(8)	D
LVEF ≤35%	A(7)	U(4)	A(7)	D
2-vessel CAD without proximal LAD				
DM(-)				
LVEF >35%	A(7)	U(6)	A(8)	D
LVEF ≤35%	A(7)	U(5)	A(8)	D
DM(+)				
LVEF >35%	A(7)	U(6)	A(8)	D
LVEF ≤35%	A(7)	U(5)	A(7)	D
1-vessel CAD including proximal LAD				
LVEF >35%	A(8)	D	A(8)	D
LVEF ≤35%	A(8)	D	A(8)	D
1-vessel CAD without proximal LAD				
LVEF >35%	A(8)	D	A(8)	D
LVEF ≤35%	A(8)	D	A(8)	D

Supplementary Table XII

	Logistic Euroscore <5%		Logistic Euroscore ≥5%	
	CKD(-)	CKD(+)	CKD(-)	CKD(+)
	2-vessel CAD including proximal LAD			
DM(-)				
LVEF >35%	A(8)	D	A(8)	D
LVEF ≤35%	A(7)	I(3)	A(8)	D
DM(+)				
LVEF >35%	A(7)	I(3)	A(8)	D
LVEF ≤35%	A(7)	I(3)	A(7)	D
2-vessel CAD without proximal LAD				
DM(-)				
LVEF >35%	A(8)	D	A(8)	D
LVEF ≤35%	A(7)	U(5)	A(8)	D
DM(+)				
LVEF >35%	A(7)	U(5)	A(8)	D
LVEF ≤35%	A(7)	U(5)	A(7)	D
1-vessel CAD including proximal LAD				
LVEF >35%	A(8)	D	A(8)	D
LVEF ≤35%	A(8)	D	A(8)	D
1-vessel CAD without proximal LAD				
LVEF >35%	A(8)	D	A(8)	D
LVEF ≤35%	A(8)	D	A(8)	D

Supplementary Table XIV

	Logistic Euroscore <5%		Logistic Euroscore ≥5%	
	CKD(-)	CKD(+)	CKD(-)	CKD(+)
	2-vessel CAD including proximal LAD			
DM(-)				
LVEF >35%	A(8)	A(7)	A(8)	A(7)
LVEF ≤35%	A(8)	A(7)	A(8)	A(7)
DM(+)				
LVEF >35%	A(8)	U(6)	A(8)	A(7)
LVEF ≤35%	A(8)	U(6)	A(8)	A(7)
2-vessel CAD without proximal LAD				
DM(-)				
LVEF >35%	A(8)	A(8)	A(9)	A(7)
LVEF ≤35%	A(8)	A(7)	A(8)	A(7)
DM(+)				
LVEF >35%	A(8)	A(8)	A(9)	A(7)
LVEF ≤35%	A(8)	A(7)	A(8)	A(7)
1-vessel CAD including proximal LAD				
LVEF >35%	A(8)	A(7)	A(8)	A(7)
LVEF ≤35%	A(8)	A(7)	A(8)	A(7)
1-vessel CAD without proximal LAD				
LVEF >35%	A(8)	A(7)	A(8)	A(7)
LVEF ≤35%	A(8)	A(7)	A(8)	A(7)

Supplementary Table XIII

	Logistic Euroscore <5%		Logistic Euroscore ≥5%	
	CKD(-)	CKD(+)	CKD(-)	CKD(+)
	2-vessel CAD including proximal LAD			
DM(-)				
LVEF >35%	U(6)	U(4)	U(6)	U(4)
LVEF ≤35%	U(6)	I(3)	U(6)	U(4)
DM(+)				
LVEF >35%	U(6)	U(4)	U(6)	U(4)
LVEF ≤35%	U(6)	I(3)	U(6)	I(3)
2-vessel CAD without proximal LAD				
DM(-)				
LVEF >35%	U(5)	U(4)	U(5)	U(4)
LVEF ≤35%	U(5)	U(4)	U(5)	U(4)
DM(+)				
LVEF >35%	U(5)	U(4)	U(5)	U(4)
LVEF ≤35%	U(5)	I(3)	U(5)	U(4)
1-vessel CAD including proximal LAD				
LVEF >35%	U(6)	U(5)	A(7)	U(5)
LVEF ≤35%	U(6)	U(4)	U(6)	U(4)
1-vessel CAD without proximal LAD				
LVEF >35%	U(5)	I(3)	U(5)	I(3)
LVEF ≤35%	U(5)	I(3)	U(5)	I(3)

Supplementary Table XV

	Logistic Euroscore <5%		Logistic Euroscore ≥5%	
	CKD(-)	CKD(+)	CKD(-)	CKD(+)
	2-vessel CAD including proximal LAD			
DM(-)				
LVEF >35%	U(4)	U(4)	U(5)	U(4)
LVEF ≤35%	U(4)	I(3)	U(5)	U(4)
DM(+)				
LVEF >35%	U(4)	I(3)	U(4)	I(3)
LVEF ≤35%	U(4)	I(3)	U(4)	I(3)
2-vessel CAD without proximal LAD				
DM(-)				
LVEF >35%	U(4)	I(3)	U(4)	U(4)
LVEF ≤35%	I(3)	I(2)	U(4)	I(3)
DM(+)				
LVEF >35%	I(3)	I(2)	U(4)	I(3)
LVEF ≤35%	I(2)	I(2)	I(3)	I(2)
1-vessel CAD including proximal LAD				
LVEF >35%	D	D	U(4)	U(4)
LVEF ≤35%	D	D	U(4)	U(4)
1-vessel CAD without proximal LAD				
LVEF >35%	U(4)	I(3)	U(4)	I(2)
LVEF ≤35%	U(4)	I(2)	I(3)	I(2)

Supplementary Table XVI

	Logistic Euroscore <5%		Logistic Euroscore ≥5%	
	CKD(-)	CKD(+)	CKD(-)	CKD(+)
1-vessel CAD including proximal LAD				
Noninvasive test positive				
LVEF >35%	A(8)	A(8)	A(8)	A(8)
LVEF ≤35%	A(8)	A(7)	A(8)	A(7)
Noninvasive test negative				
LVEF >35%	A(7)	U(6)	U(6)	U(6)
LVEF ≤35%	U(6)	U(6)	U(6)	U(6)
Noninvasive test not performed				
LVEF >35%	A(7)	U(6)	A(7)	U(6)
LVEF ≤35%	U(6)	U(6)	U(6)	U(6)
1-vessel CAD without proximal LAD				
Noninvasive test positive				
LVEF >35%	A(9)	A(8)	A(9)	A(8)
LVEF ≤35%	A(8)	A(7)	A(8)	A(7)
Noninvasive test negative				
LVEF >35%	U(4)	I(3)	U(4)	I(3)
LVEF ≤35%	U(4)	I(3)	U(4)	I(2)
Noninvasive test not performed				
LVEF >35%	U(6)	U(5)	U(6)	U(5)
LVEF ≤35%	U(6)	U(5)	U(6)	U(5)

Supplementary Table XVII

	Logistic Euroscore <5%		Logistic Euroscore ≥5%	
	CKD(-)	CKD(+)	CKD(-)	CKD(+)
Noninvasive test positive				
DM(-)				
LVEF >35%	A(8)	A(7)	U(8)	A(7)
LVEF ≤35%	A(8)	A(7)	A(8)	A(7)
DM(+)				
LVEF >35%	A(8)	U(6)	A(8)	A(7)
LVEF ≤35%	A(8)	U(6)	A(8)	A(7)
Noninvasive test negative				
DM(-)				
LVEF >35%	U(5)	U(5)	U(5)	U(5)
LVEF ≤35%	U(5)	U(5)	U(5)	U(5)
DM(+)				
LVEF >35%	U(5)	U(5)	U(5)	U(5)
LVEF ≤35%	U(5)	U(5)	U(5)	U(5)
Noninvasive test not performed				
DM(-)				
LVEF >35%	U(6)	U(6)	A(7)	U(6)
LVEF ≤35%	U(6)	U(6)	U(6)	U(6)
DM(+)				
LVEF >35%	U(6)	U(6)	U(6)	U(5)
LVEF ≤35%	U(6)	U(6)	U(6)	U(5)

Supplementary Table XVIII

	Logistic Euroscore <5%		Logistic Euroscore ≥5%	
	CKD(-)	CKD(+)	CKD(-)	CKD(+)
Noninvasive test positive				
DM(-)				
LVEF >35%	A(8)	A(8)	A(9)	A(7)
LVEF ≤35%	A(8)	A(8)	A(8)	A(7)
DM(+)				
LVEF >35%	A(8)	A(8)	A(9)	A(7)
LVEF ≤35%	A(8)	A(8)	A(8)	A(7)
Noninvasive test negative				
DM(-)				
LVEF >35%	U(5)	U(4)	U(5)	U(4)
LVEF ≤35%	U(5)	U(4)	U(5)	U(4)
DM(+)				
LVEF >35%	U(5)	U(4)	U(5)	U(4)
LVEF ≤35%	U(5)	U(4)	U(5)	U(4)
Noninvasive test not performed				
DM(-)				
LVEF >35%	A(7)	U(6)	A(7)	U(6)
LVEF ≤35%	U(6)	U(6)	A(7)	U(6)
DM(+)				
LVEF >35%	U(6)	U(6)	A(7)	U(6)
LVEF ≤35%	U(6)	U(6)	U(6)	U(6)

Supplementary Table XIX

	Logistic Euroscore <5%		Logistic Euroscore ≥5%	
	CKD(-)	CKD(+)	CKD(-)	CKD(+)
1-vessel CAD including proximal LAD				
Noninvasive test positive				
LVEF >35%	A(9)	A(8)	A(9)	A(7)
LVEF ≤35%	A(8)	A(7)	A(8)	A(8)
Noninvasive test negative				
LVEF >35%	A(7)	U(6)	A(7)	U(6)
LVEF ≤35%	A(7)	U(6)	A(7)	U(6)
Noninvasive test not performed				
LVEF >35%	A(8)	A(7)	A(8)	A(7)
LVEF ≤35%	A(7)	A(7)	A(7)	A(7)
1-vessel CAD without proximal LAD				
Noninvasive test positive				
LVEF >35%	A(9)	A(8)	A(9)	A(8)
LVEF ≤35%	A(9)	A(7)	A(9)	A(7)
Noninvasive test negative				
LVEF >35%	D	D	D	D
LVEF ≤35%	D	D	D	D
Noninvasive test not performed				
LVEF >35%	A(8)	A(7)	A(7)	A(7)
LVEF ≤35%	A(8)	A(7)	A(7)	A(7)

Supplementary Table XX

	Logistic Euroscore <5%		Logistic Euroscore ≥5%	
	CKD(-)	CKD(+)	CKD(-)	CKD(+)
Noninvasive test positive				
DM(-)				
LVEF >35%	A(8)	A(7)	A(8)	A(8)
LVEF ≤35%	A(8)	A(7)	A(8)	A(8)
DM(+)				
LVEF >35%	A(8)	U(6)	A(8)	A(8)
LVEF ≤35%	A(8)	U(6)	A(8)	A(8)
Noninvasive test negative				
DM(-)				
LVEF >35%	A(7)	U(6)	A(8)	U(6)
LVEF ≤35%	A(7)	U(6)	A(7)	U(6)
DM(+)				
LVEF >35%	A(7)	U(6)	A(7)	U(6)
LVEF ≤35%	A(7)	U(6)	A(7)	U(6)
Noninvasive test not performed				
DM(-)				
LVEF >35%	A(8)	U(6)	A(8)	U(6)
LVEF ≤35%	A(8)	A(7)	A(7)	U(6)
DM(+)				
LVEF >35%	A(8)	U(6)	A(7)	U(6)
LVEF ≤35%	A(7)	U(6)	A(7)	A(7)

Supplementary Table XXI

	Logistic Euroscore <5%		Logistic Euroscore ≥5%	
	CKD(-)	CKD(+)	CKD(-)	CKD(+)
Noninvasive test positive				
DM(-)				
LVEF >35%	A(9)	A(8)	A(9)	A(8)
LVEF ≤35%	A(8)	A(7)	A(9)	A(7)
DM(+)				
LVEF >35%	A(8)	A(7)	A(9)	A(7)
LVEF ≤35%	A(8)	A(7)	A(9)	A(7)
Noninvasive test negative				
DM(-)				
LVEF >35%	A(8)	A(7)	A(7)	A(7)
LVEF ≤35%	A(7)	A(7)	A(7)	A(7)
DM(+)				
LVEF >35%	A(7)	A(7)	A(7)	A(7)
LVEF ≤35%	A(7)	A(7)	A(7)	U(6)
Noninvasive test not performed				
DM(-)				
LVEF >35%	A(8)	A(7)	A(8)	A(7)
LVEF ≤35%	A(7)	A(7)	A(8)	A(7)
DM(+)				
LVEF >35%	A(7)	A(7)	A(8)	A(7)
LVEF ≤35%	A(7)	A(7)	A(7)	A(7)

Supplementary Table XXII. Baseline characteristics

Characteristic	N = 4950
Demographics	
Male, n (%)	4006 (80.9%)
Age, y	68.2 ± 9.7
Clinical factors	
Hypertension, n (%)	3874 (78.3%)
Hypercholesterolemia, n (%)	3572 (72.2%)
Diabetes mellitus, n (%)	2328 (47.0%)
Current and past smoking, n (%)	1495 (30.3%)
Prior history of MI	1702 (34.4%)
Prior PCI	2623 (53.0%)
Prior CABG	337 (6.8%)
Hemodialysis	249 (5.0%)
Cerebrovascular disease	455 (9.2%)
Peripheral arterial disease	525 (10.6%)
Chronic lung disease	156 (3.2%)
Angina	
No symptoms	1622 (32.8%)
CCS class	
I	693 (14.0%)
II	1371 (27.7%)
III	468 (9.5%)
IV	80 (1.6%)
Unknown	716 (14.5%)
Target vessels to be treated	
1	1980 (40.0%)
2	1812 (36.6%)
3	1158 (23.4%)
Antianginal medications	
≥2 antianginals prescribed	230 (4.6%)
β-Blocker	576 (11.6%)
Calcium-channel blockers	224 (4.5%)
Long-acting nitrates	226 (4.6%)
Other antianginal agent	86 (1.7%)
Angiographic characteristic	
Left main trunk	164 (3.3%)
CTO without other coronary stenosis	197 (4.0%)
Presence of proximal LAD stenosis	1136 (22.9%)

All values are expressed as the mean ± SD or as a number with the percentage of subjects in parentheses. Abbreviations: MI, Myocardial infarction; CTO, chronic total occlusion.

Supplementary Table XXIII. Baseline characteristic differences under J-AUC versus US-AUC

Characteristic	J-AUC (n = 2077)	US-AUC (n = 1982)	P
Demographics			
Male, n (%)	1661 (80.0%)	1586 (80.0%)	.969
Age, y	68.4 ± 9.8	68.4 ± 9.7	.922
Clinical factors			
Hypertension, n (%)	1617 (77.9%)	1572 (79.3%)	.257
Hypercholesterolemia, n (%)	1444 (69.6%)	1438 (72.6%)	.033
Diabetes mellitus, n (%)	933 (44.9%)	893 (45.1%)	.931
Current and past smoking, n (%)	640 (30.9%)	575 (29.1%)	.21
Prior history of MI	573 (27.6%)	596 (30.1%)	.081
Prior PCI	760 (36.6%)	864 (43.6%)	<.001
Prior CABG	0 (0%)	83 (4.2%)	<.001
Hemodialysis	96 (4.6%)	112 (5.7%)	.137
Cerebrovascular disease	210 (10.1%)	202 (10.2%)	.928
Peripheral arterial disease	196 (9.4%)	192 (9.7%)	.786
Chronic lung disease	64 (3.1%)	62 (3.1%)	.932
Angina			
No symptoms	783 (37.7%)	555 (28.0%)	<.001
CCS class			
I	332 (16.0%)	377 (19.0%)	
II	678 (32.6%)	750 (37.9%)	
III	251 (12.1%)	239 (12.1%)	
IV	33 (1.6%)	38 (1.9%)	
Unknown	0 (0%)	22 (1.1%)	
Target vessels to be treated			
1	910 (43.8%)	859 (43.3%)	.077
2	757 (36.4%)	778 (39.3%)	
3	410 (19.7%)	345 (17.4%)	
Antianginal medications			
≥2 antianginals prescribed	107 (5.2%)	117 (5.9%)	.295
β-Blocker	255 (12.3%)	299 (15.1%)	.009
Calcium-channel blockers	91 (4.4%)	117 (5.9%)	.028
Long-acting nitrates	122 (5.9%)	113 (5.7%)	.814
Other antianginal agent	38 (1.8%)	42 (2.1%)	.507
Angiographic characteristic			
Left main trunk	48 (2.3%)	111 (5.6%)	<.001
CTO without other coronary stenosis	97 (4.7%)	77 (3.9%)	.217
Presence of proximal LAD stenosis	486 (23.4%)	316 (15.9%)	<.001

All values are expressed as the mean ± SD or as a number with the percentage of subjects in parentheses.

Supplementary Table XXIV. Baseline characteristic differences of patients categorized as inappropriate

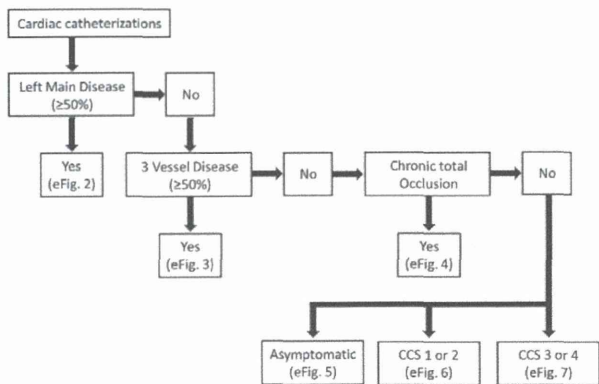
Characteristic	J-AUC (n = 107)	US-AUC (n = 298)	P
Demographics			
Male, n (%)	95 (88.8%)	252 (84.6%)	.336
Age, y	66.7 ± 9.3	67.0 ± 9.2	.798
Clinical factors			
Hypertension, n (%)	82 (76.6%)	228 (76.5%)	1
Hypercholesterolemia, n (%)	73 (68.2%)	216 (72.7%)	.384
Diabetes, n (%)	90 (84.1%)	126 (42.4%)	<.001
Current and past smoking, n (%)	47 (43.9%)	93 (31.4%)	.024
Prior history of MI	39 (36.4%)	115 (38.6%)	.729
Prior PCI	55 (51.4%)	139 (46.6%)	.431
Hemodialysis	21 (19.6%)	16 (5.4%)	<.001
Cerebrovascular disease	13 (12.1%)	32 (10.7%)	.721
Peripheral arterial disease	11 (10.3%)	37 (12.4%)	.606
Chronic lung disease	2 (1.9%)	9 (3.0%)	.736
Angina			
No symptoms	101 (94.4%)	238 (79.8%)	<.001
CCS class			
I	4 (3.7%)	27 (9.1%)	
II	2 (1.9%)	33 (11.1%)	
III	0 (0%)	0 (0%)	
IV	0 (0%)	0 (0%)	
Unknown	0 (0%)	0 (0%)	
Target vessels to be treated			
1	24 (22.4%)	154 (51.7%)	<.001
2	77 (72.0%)	135 (45.3%)	
3	6 (5.6%)	9 (3.0%)	
Antianginal medications			
≥2 antianginals prescribed	1 (0.9%)	2 (0.7%)	1
β-Blocker	3 (2.8%)	21 (11.6%)	.151
Calcium-channel blockers	0 (0%)	5 (1.7%)	.331
Long-acting nitrates	0 (0%)	5 (4.6%)	.331
Other antianginal agent	1 (0.9%)	3 (1.0%)	1
Angiographic characteristic			
Left main trunk	19 (17.8%)	1 (0.3%)	<.001
CTO without other coronary stenosis	1 (0.9%)	18 (6.0%)	.032
Presence of proximal LAD stenosis	13 (12.1%)	2 (0.7%)	<.001

The differences of previous CABG were excluded in this table because the patients with CABG were excluded from J-AUC–based assessment. All values are expressed as the mean ± SD or as a number with the percentage of subjects in parentheses.

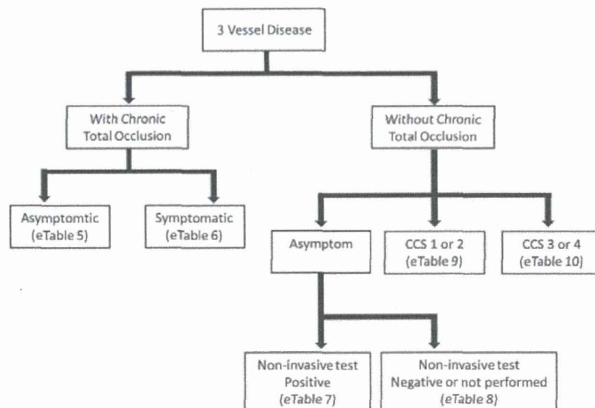
Supplementary Table XXV. Appropriateness of revascularization for multivessel disease based on J-AUC or US-AUC

	J-AUC						US-AUC	
	Logistic Euroscore <5%			Logistic Euroscore ≥5%			PCI	CABG
	PCI			PCI				
	CKD(-)	CKD(+)	CABG	CKD(-)	CKD(+)	CABG		
3-vessel CAD involving proximal LAD								
Without DM								
Preserved LVEF	A(7)	U(6)	A(8)	A(8)	A(7)	U(4)	U(6)	A(8)
Reduced LVEF	A(7)	U(6)	A(8)	A(8)	A(7)	U(5)	U(4)	A(9)
With DM								
Preserved LVEF	A(7)	U(6)	A(8)	A(7)	U(6)	U(5)	U(5)	A(9)
Reduced LVEF	U(6)	U(6)	A(8)	A(8)	A(7)	U(5)	U(5)	A(9)
2-vessel CAD involving proximal LAD								
Without DM								
Preserved LVEF	A(8)	A(7)	A(7)	A(8)	A(8)	U(4)	A(8)	A(8)
Reduced LVEF	A(8)	A(7)	A(7)	A(8)	A(8)	U(5)	A(7)	A(8)
With DM								
Preserved LVEF	A(8)	U(6)	A(8)	A(8)	A(8)	U(5)	A(7)	A(8)
Reduced LVEF	A(8)	U(6)	A(7)	A(7)	A(8)	U(5)	A(7)	A(8)

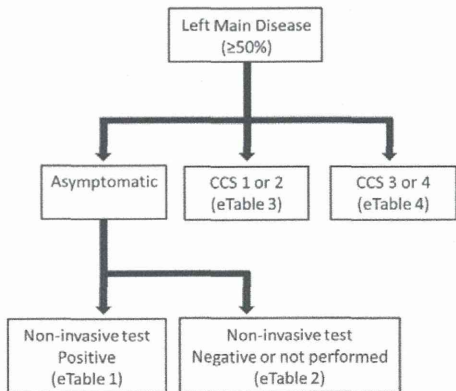
Supplementary Figure 1



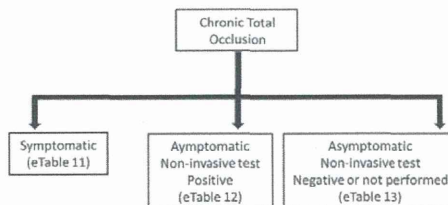
Supplementary Figure 3



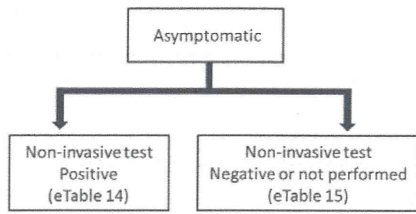
Supplementary Figure 2



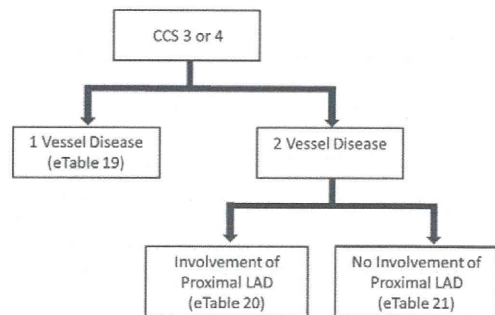
Supplementary Figure 4



Supplementary Figure 5



Supplementary Figure 7



Supplementary Figure 6

