

products. KKosaki and TM designed the study and interpreted the data. NM, KKaga, and TM contributed to accumulation and interpretation of clinical data. TM finalized the manuscript. All authors read and approved the final manuscript.

Acknowledgements

We are grateful to the families who participated in this study and to Dr. Shin Masuda at Hiroshima Prefectural Hospital, Hiroshima, Dr. Tomoko Sugiuchi at Kanto Rosai Hospital, Kanagawa, Dr. Hidenobu Tajiri at the National Center for Child Health and Development, Tokyo, and Dr. Hirokazu Sakamoto at Kobe Children's Hospital, Hyogo, Japan, who collected DNA samples and clinical data from the subjects. This work was supported by a Research on Applying Health Technology grant (H23-013) from the Ministry of Health and Labour and Welfare, Japan and a Grant-in-Aid for Clinical Research from the National Hospital Organization.

Author details

¹Laboratory of Auditory Disorders, National Institute of Sensory Organs, National Hospital Organization Tokyo Medical Center, 2-5-1 Higashigaoka, Meguro, Tokyo 152-8902, Japan. ²Iwate Tohoku Medical Megabank Organization, Iwate Medical University, Iwate, Japan. ³Center for Medical Genetics Keio University School of Medicine, Tokyo, Japan. ⁴Department of Otorhinolaryngology, National Center for Child Health and Development, Tokyo, Japan. ⁵Laboratory of Gene Medicine, Keio University School of Medicine, Tokyo, Japan. ⁶National Institute of Sensory Organs, National Hospital Organization Tokyo Medical Center, Tokyo, Japan.

Received: 18 July 2013 Accepted: 5 October 2013
Published: 28 October 2013

References

- Morton CC, Nance WE: Newborn hearing screening—a silent revolution. *N Engl J Med* 2006, **354**:2151–2164.
- Kral A, O'Donoghue GM: Profound deafness in childhood. *N Engl J Med* 2010, **363**:1438–1450.
- Hereditary hearing loss homepage*. <http://hereditaryhearingloss.org>.
- Hutchins T, Coy NN, Conlon H, Telford E, Bromelow K, Blaydon D, Taylor G, Coghill E, Brown S, Trembath R, Liu XZ, Bitner-Glindzica M, Mueller R: Assessment of the genetic causes of recessive childhood non-syndromic deafness in the UK - implications for genetic testing. *Clin Genet* 2005, **68**:506–512.
- Matsunaga T, Kumanomido H, Shiroma M, Goto Y, Usami S: Audiological features and mitochondrial DNA sequence in a large family carrying mitochondrial A1555G mutation without use of aminoglycoside. *Ann Otol Rhinol Laryngol* 2005, **114**:153–160.
- Shearer AE, DeLuca AP, Hildebrand MS, Taylor KR, Gurrola J 2nd, Scherer S, Scheetz TE, Smith RJ: Comprehensive genetic testing for hereditary hearing loss using massively parallel sequencing. *Proc Natl Acad Sci USA* 2010, **107**:21104–21109.
- Shearer AE, Smith RJ: Genetics: advances in genetic testing for deafness. *Curr Opin Pediatr* 2012, **24**:679–686.
- Brownstein Z, Bhonker Y, Avraham KB: High-throughput sequencing to decipher the genetic heterogeneity of deafness. *Genome Biol* 2012, **13**:245.
- Delmaghani S, Aghaie A, Michalski N, Bonnet C, Weil D, Petit C: Defect in the gene encoding the EAR/EPTP domain-containing protein TSPEAR causes DFNB98 profound deafness. *Hum Mol Genet* 2012, **21**:3835–3844.
- Schraders M, Haas SA, Weegeerink NJ, Oostrik J, Hu H, Hoefsloot LH, Kannan S, Huygen PL, Pennings RJ, Admiraal RJ, Kalscheuer VM, Kunst HP, Kremer H: Next-generation sequencing identifies mutations of SMPX, which encodes the small muscle protein, X-linked, as a cause of progressive hearing impairment. *Am J Hum Genet* 2011, **88**:628–634.
- Zheng J, Miller KK, Yang T, Hildebrand MS, Shearer AE, DeLuca AP, Scheetz TE, Drummond J, Scherer SE, Legan PK, Goodyear RJ, Richardson GP, Cheatham MA, Smith RJ, Dallos P: Carcinoembryonic antigen-related cell adhesion molecule 16 interacts with alpha-tectorin and is mutated in autosomal dominant hearing loss (DFNA4). *Proc Natl Acad Sci USA* 2011, **108**:4218–4223.
- Matsunaga T, Mutai H, Kunishima S, Namba K, Morimoto N, Shinjo Y, Arimoto Y, Kataoka Y, Shintani T, Morita N, Sugiuchi T, Masuda S, Nakano A, Tajiri H, Kaga K: A prevalent founder mutation and genotype-phenotype correlations of OTOF in Japanese patients with auditory neuropathy. *Clin Genet* 2012, **82**:425–432.
- dbSNP. <http://www.ncbi.nlm.nih.gov/projects/SNP/>.
- 1000GENOME. <http://www.1000genomes.org/>.
- NHLBI exome variant server. <http://evs.gs.washington.edu/EVS/>.
- UCSC conservation. <http://genome.ucsc.edu/index.html>.
- PolyPhen-2. <http://genetics.bwh.harvard.edu/pph2/>.
- PROVEAN. <http://provean.jcvi.org/index.php>.
- NNSPLICE. http://www.fruitfly.org/seq_tools/splice.html.
- Altschul SF, Madden TL, Schaffer AA, Zhang J, Zhang Z, Miller W, Lipman DJ: Gapped BLAST and PSI-BLAST: a new generation of protein database search programs. *Nucleic Acids Res* 1990, **18**:3401–3402.
- PDBsum. <http://www.ebi.ac.uk/pdbsum/>.
- Arnold K, Bordoli L, Kopp J, Schwede T: The SWISS-MODEL workspace: a web-based environment for protein structure homology modelling. *Bioinformatics* 2006, **22**:195–201.
- Kiefer B, Riemann M, Buche C, Kassemeyer HH, Nick P: The host guides morphogenesis and stomatal targeting in the grapevine pathogen *Plasmopara viticola*. *Planta* 2002, **215**:387–393.
- Peitsch MC, Tschopp J: Comparative molecular modelling of the Fas-ligand and other members of the TNF family. *Mol Immunol* 1995, **32**:761–772.
- Bowie JJ, Luthy R, Eisenberg D: A method to identify protein sequences that fold into a known three-dimensional structure. *Science* 1991, **253**:164–170.
- Luthy R, Bowie JJ, Eisenberg D: Assessment of protein models with three-dimensional profiles. *Nature* 1992, **356**:83–85.
- Petersen EF, Goddard TD, Huang CC, Couch GS, Greenblatt DM, Meng EC, Ferrin TE: UCSF chimera—a visualization system for exploratory research and analysis. *J Comput Chem* 2004, **25**:1605–1612.
- Morin M, Bryan KE, Mayo-Merino F, Goodyear R, Mencia A, Modamio-Hoybjor S, del Castillo I, Cabalka JM, Richardson G, Moreno F, Rubenstein PA, Moreno-Pelayo MA: In vivo and in vitro effects of two novel gamma-actin (ACTG1) mutations that cause DFNA20/26 hearing impairment. *Hum Mol Genet* 2009, **18**:3075–3089.
- Shvetsov A, Musib R, Phillips M, Rubenstein PA, Reisler E: Locking the hydrophobic loop 262–274 to G-actin surface by a disulfide bridge prevents filament formation. *Biochemistry* 2002, **41**:10787–10793.
- Collin RW, Chellappa R, Pauw RJ, Vriend G, Oostrik J, van Drunen W, Huygen PL, Admiraal R, Hoefsloot LH, Cremers FP, Xiang M, Cremers CW, Kremer H: Missense mutations in POU4F3 cause autosomal dominant hearing impairment DFNA15 and affect subcellular localization and DNA binding. *Hum Mutat* 2008, **29**:545–554.
- Vahava O, Morell R, Lynch ED, Weiss S, Kagan ME, Ahituv N, Morrow JE, Lee MK, Skvorak AB, Morton CC, Blumenfeld A, Frydman M, Friedman TB, King MC, Avraham KB: Mutation in transcription factor POU4F3 associated with inherited progressive hearing loss in humans. *Science* 1998, **279**:1950–1954.
- Bischoff AM, Luijckx MW, Huygen PL, van Duijnhoven G, De Leenheer EM, Oudesluijs GG, Van Laer L, Cremers FP, Cremers CW, Kremer H: A novel mutation identified in the DFNA5 gene in a Dutch family: a clinical and genetic evaluation. *Audiol Neurootol* 2004, **9**:34–46.
- Van Laer L, Meyer NC, Malekpour M, Riazalhosseini Y, Moghannibashi M, Kahrizi K, Vandeveld A, Alasti F, Najmabadi H, Van Camp G, Smith RJ: A novel DFNA5 mutation does not cause hearing loss in an Iranian family. *J Hum Genet* 2007, **52**:549–552.
- Liu XZ: Prestin, a cochlear motor protein, is defective in non-syndromic hearing loss. *Hum Mol Genet* 2003, **12**:1155–1162.
- Ruf RG, Xu PX, Silvis D, Otto EA, Beekmann F, Muerb UT, Kumar S, Neuhaus TJ, Kemper MJ, Raymond RM Jr, Brophy PD, Berkman J, Gattas M, Hyland V, Ruf EM, Schwartz C, Chang EH, Smith RJ, Stratakis CA, Weil D, Petit C, Hildebrandt F: SIX1 mutations cause branchio-oto-renal syndrome by disruption of EYA1-SIX1-DNA complexes. *Proc Natl Acad Sci USA* 2004, **101**:8090–8095.
- Smith RJH, et al: Branchiootorenal spectrum disorders. In *Gene reviews*. Edited by Pagon RA, Adam MP, Bird TD. <http://www.ncbi.nlm.nih.gov/books/NBK1380/>.
- Liu XZ, Walsh J, Tamagawa Y, Kitamura K, Nishizawa M, Steel KP, Brown SD: Autosomal dominant non-syndromic deafness caused by a mutation in the myosin VIIA gene. *Nat Genet* 1997, **17**:268–269.
- Liu XZ, Walsh J, Mburu P, Kendrick-Jones J, Cope MJ, Steel KP, Brown SD: Mutations in the myosin VIIA gene cause non-syndromic recessive deafness. *Nat Genet* 1997, **16**:188–190.

39. Weil D, Kussel P, Blanchard S, Levy G, Levi-Acobas F, Drira M, Ayadi H, Petit C: The autosomal recessive isolated deafness, DFNB2, and the Usher 1B syndrome are allelic defects of the myosin-VIIA gene. *Nat Genet* 1997, **16**:191–193.
40. Yang Y, Baboolal TG, Siththanandan V, Chen M, Walker ML, Knight PJ, Peckham M, Sellers JR: A FERM domain autoregulates drosophila myosin 7a activity. *Proc Natl Acad Sci USA* 2009, **106**:4189–4194.
41. Adato A, Michel V, Kikkawa Y, Reiners J, Alagramam KN, Weil D, Yonekawa H, Wolfrum U, El-Amraoui A, Petit C: Interactions in the network of usher syndrome type 1 proteins. *Hum Mol Genet* 2005, **14**:347–356.
42. Wu L, Pan L, Wei Z, Zhang M: Structure of MyTH4-FERM domains in myosin VIIa tail bound to cargo. *Science* 2011, **331**:757–760.
43. Wagatsuma M, Kitoh R, Suzuki H, Fukuoka H, Takumi Y, Usami S: Distribution and frequencies of CDH23 mutations in Japanese patients with non-syndromic hearing loss. *Clin Genet* 2007, **72**:339–344.
44. Bork JM, Peters LM, Riazuddin S, Bernstein SL, Ahmed ZM, Ness SL, Polomeno R, Ramesh A, Schloss M, Srisailpathy CR, Wayne S, Bellman S, Desmukh D, Ahmed Z, Khan SN, Kaloustian VM, Li XC, Lalwani A, Riazuddin S, Bitner-Glindzic M, Nance WE, Liu XZ, Wistow G, Smith RJ, Griffith AJ, Wilcox ER, Friedman TB, Morell RJ: Usher syndrome 1D and nonsyndromic autosomal recessive deafness DFNB12 are caused by allelic mutations of the novel cadherin-like gene CDH23. *Am J Hum Genet* 2001, **68**:26–37.
45. Ahmed ZM, Riazuddin S, Ahmad J, Bernstein SL, Guo Y, Sabar MF, Sieving P, Riazuddin S, Griffith AJ, Friedman TB, Belyantseva IA, Wilcox ER: PCDH15 is expressed in the neurosensory epithelium of the eye and ear and mutant alleles are responsible for both USH1F and DFNB23. *Hum Mol Genet* 2003, **12**:3215–3223.
46. Zheng QY, Yan D, Ouyang XM, Du LL, Yu H, Chang B, Johnson KR, Liu XZ: Digenic inheritance of deafness caused by mutations in genes encoding cadherin 23 and protocadherin 15 in mice and humans. *Hum Mol Genet* 2005, **14**:103–111.
47. Eudy JD, Weston MD, Yao S, Hoover DM, Rehm HL, Ma-Edmonds M, Yan D, Ahmad I, Cheng JJ, Ayuso C, Cremers C, Davenport S, Moller C, Talmadge CB, Beisel KW, Tamayo M, Morton CC, Swaroop A, Kimberling WJ, Surnegi J: Mutation of a gene encoding a protein with extracellular matrix motifs in usher syndrome type IIa. *Science* 1998, **280**:1753–1757.
48. Brownstein Z, Friedman LM, Shahin H, Oron-Karni V, Kol N, Abu Rayyan A, Parzefall T, Lev D, Shalev S, Frydman M, Davidov B, Shohat M, Rahile M, Lieberman S, Levy-Lahad E, Lee MK, Shomron N, King MC, Walsh T, Kanaan M, Avraham KB: Targeted genomic capture and massively parallel sequencing to identify genes for hereditary hearing loss in middle eastern families. *Genome Biol* 2011, **12**:R89.
49. Sotomayor M, Weihofen WA, Gaudet R, Corey DP: Structure of a force-conveying cadherin bond essential for inner-ear mechanotransduction. *Nature* 2012, **492**:128–132.
50. Yang T, Gurrola JG 2nd, Wu H, Chiu SM, Wangemann P, Snyder PM, Smith RJ: Mutations of KCNJ10 together with mutations of SLC26A4 cause digenic nonsyndromic hearing loss associated with enlarged vestibular aqueduct syndrome. *Am J Hum Genet* 2009, **84**:651–657.
51. Yang T, Vidarsson H, Rodrigo-Blomqvist S, Rosengren SS, Enerback S, Smith RJ: Transcriptional control of SLC26A4 is involved in pendred syndrome and nonsyndromic enlargement of vestibular aqueduct (DFNB4). *Am J Hum Genet* 2007, **80**:1055–1063.
52. Riazuddin S, Castelein CM, Ahmed ZM, Lalwani AK, Mastroianni MA, Naz S, Smith TN, Liburd NA, Friedman TB, Griffith AJ, Riazuddin S, Wilcox ER: Dominant modifier DFNM1 suppresses recessive deafness DFNB26. *Nat Genet* 2000, **26**:431–434.
53. Miyagawa M, Nishio SY, Usami S: Prevalence and clinical features of hearing loss patients with CDH23 mutations: a large cohort study. *PLoS One* 2012, **7**:e40366.

doi:10.1186/1750-1172-8-172

Cite this article as: Mutai et al.: Diverse spectrum of rare deafness genes underlies early-childhood hearing loss in Japanese patients: a cross-sectional, multi-center next-generation sequencing study. *Orphanet Journal of Rare Diseases* 2013 **8**:172.

Submit your next manuscript to BioMed Central and take full advantage of:

- Convenient online submission
- Thorough peer review
- No space constraints or color figure charges
- Immediate publication on acceptance
- Inclusion in PubMed, CAS, Scopus and Google Scholar
- Research which is freely available for redistribution

Submit your manuscript at
www.biomedcentral.com/submit



These articles have been accepted for publication in the *British Journal of Dermatology* and are currently being edited and typeset. Readers should note that articles published below have been fully refereed, but have not been through the copy-editing and proof correction process. Wiley-Blackwell and the British Association of Dermatologists cannot be held responsible for errors or consequences arising from the use of information contained in these articles; nor do the views and opinions expressed necessarily reflect those of Wiley-Blackwell or the British Association of Dermatologists

This article is protected by copyright. All rights reserved.

Accepted Date : 09-Dec-2013

Article type:-Correspondence

The novel *SLCO2A1* heterozygous missense mutation p.E427K and nonsense mutation p.R603* in a female patient with pachydermoperiostosis with an atypical phenotype

Running title: Mutations of *SLCO2A1* in Japanese pachydermoperiostosis

H. Niizeki^{1*}, A. Shiohama^{2,3}, T. Sasaki⁴, A. Seki⁵, K. Kabashima⁶, A. Otsuka⁶, M. Takeshita⁷, A. Hirakiyama⁸, T. Okuyama⁸, K. Tanese², A. Ishiko⁹, M. Amagai², J. Kudoh³

¹*Department of Dermatology, National Center for Child Health and Development, Tokyo, Japan*

²*Department of Dermatology, Keio University School of Medicine, Tokyo, Japan*

This article is protected by copyright. All rights reserved.

³*Laboratory of Gene Medicine, Keio University School of Medicine, Tokyo, Japan*

⁴*Center for Integrated Medical Research, Keio University School of Medicine,
Tokyo, Japan*

⁵*Department of Orthopedics, National Center for Child Health and Development,
Tokyo, Japan*

⁶*Department of Dermatology, Kyoto University Graduate School of Medicine,
Kyoto, Japan*

⁷*Center for Arthritis and Rheumatic Diseases, Tohoku Pharmaceutical University
Hospital, Sendai, Japan*

⁸*Department of Laboratory Medicine, National Center for Child Health and
Development, Tokyo, Japan*

⁹*Department of Dermatology, School of Medicine, Toho University, Ota-ku, Tokyo,
Japan*

***Correspondence:** Department of Dermatology, National Center for Child Health
and Development, 2-10-1 Okura, Setagaya-ku, Tokyo 157-8535, Japan

Tel: +81 3 3416 0181; fax: +81 3 5494 7909.

E-mail address: niizeki-h@ncchd.go.jp

This article is protected by copyright. All rights reserved.

Funding sources: The Ministry of Health, Labour and Welfare of Japan to H. Niizeki (Research for Intractable Diseases) and a grant from Keio University to J. Kudoh

Conflicts of interest

None declared.

Keywords

Pachydermoperiostosis, Primary hypertrophic osteoarthropathy, SLCO2A1, HPGD, Prostaglandin E2

DEAR EDITOR, Pachydermoperiostosis (PDP), or primary hypertrophic osteoarthropathy (PHO: MIM 167100), is a rare genetic disease affecting both skin and bones. The major diagnostic criteria include finger clubbing, periostosis, pachydermia, and cutis verticis gyrata (CVG). Additional symptoms, including sebaceous hyperplasia, hyperhidrosis, and arthropathy, have been reported.^{1,2}

Uppal *et al.* discovered that a homozygous mutation in *HPGD*, which encodes 15-hydroxyprostaglandin dehydrogenase (15-PGDH), causes PHO and PDP.³

This article is protected by copyright. All rights reserved.

However, PHO and PDP are genetically heterogeneous. Exome analysis of PDP in Japanese, Chinese, Caucasian, and other races has revealed homozygous mutations in the solute carrier organic anion transporter family member 2A1 (*SLCO2A1*) gene, which encodes prostaglandin transporter (PGT).⁴⁻⁸ Increased levels of prostaglandin E2 (PGE2) resulting from defective degradation contribute to the pathogenesis of PHO and PDP. A genetic defect in either *SLCO2A1* or *HPGD* can cause PHO and PDP.

In this study, we describe the first observation of a *SLCO2A1* mutation in a female patient.

A 67-year-old woman was referred for *SLCO2A1* mutation analysis. At the age of 43, she developed myelopathy of unknown aetiology. She received rehabilitation therapy without medication. A neurologist had examined her muscle weakness at the Th7 level on the right side following a diagnosis of suspected multiple sclerosis. At the age of 64, she had multiple seronegative arthralgias but no serious problems. She was referred to Tohoku Kouseinenkin Hospital because of recurring arthralgia and was treated with methotrexate and prednisone. She responded favourably to the medication with alleviation of the pain and decreased serum levels of C-reactive protein. Physical examination revealed finger clubbing and swelling of the large joints, as seen in panels (b) and (c) in Fig. 1. No skin manifestations, including facial

This article is protected by copyright. All rights reserved.

coarseness or greasiness, and no hyperhidrosis were observed. Marked thickening of the scalp (cutis verticis gyrata, CVG) was not evident. Radiological examination showed the presence of periostosis of the diaphysis of the tibia and fibula (Fig. 1d). No hydrarthrosis was evident. A diagnosis of possible incomplete type of PDP or PHO was made because of minimal pachydermia. She had no history of peptic ulcers and anaemia. Diagnostic imaging and laboratory data revealed no evidence of secondary PDP. She has a son and a daughter who were healthy.

This study was approved by the ethics committee of the National Centre for Child Health and Development and Keio University School of Medicine. The participants provided written informed consents. All exons of *HPGD* and *SLCO2A1* along with sequences adjacent to the exon-intron borders were amplified, sequenced, and screened for mutations.⁴ Serum and urinary levels of PGE₂ were measured with a commercial enzyme immunoassay kit (Cayman, Cayman Biochemical, Ann Arbor, MI, USA).⁴

We identified compound heterozygous novel mutations c.1279G>A/p.E427K and c.1807C>T/p.R603* in *SLCO2A1* (Fig. 2). We also detected a heterozygous mutation c.1279G>A in her daughter, but she has not developed any triad of PDP.

This article is protected by copyright. All rights reserved.

In her seventh decade, the patient's atypical history showed minimal impact of pachydermia. Serum PGE2 was not detected and her urinary PGE2 was within normal limits (372 pg/ml). One of the mutations, c.1279G>A (p.E427K), is included within the region of a previously reported deletion, c.1279_1290del12 (p.E427_P430del).⁴ Another mutation, c.1807C>T/p.R603*, is detected close to the C-terminus of PGT, resulting in a shortened predicted protein. The lost function in truncated PGT is consistent with the presence of the p.R603* mutation in another patient, who had the complete type of PDP (manuscript in preparation).

This patient is the first woman with PDP who had an *SLCO2A1* gene mutation. It is unlikely that the mild phenotype of P1 was due to the missense mutation p.E427K. A recent report on PDP in a Chinese family described a homozygous p.A286Qfs*35 frameshift mutation in a male proband who had PDP.⁷ Two of the proband's sisters were also homozygous for p.A286Qfs*35, but at ages 42 and 47, they had neither history nor findings suggestive of PDP.⁷ Diggle *et al.*⁶ reported that two women in two PDP families were homozygous for pathogenic *SLCO2A1* mutations. One had mild finger clubbing but no musculoskeletal or skin symptoms at 34 years of age. The other was asymptomatic at 19 years of age. Taken together, we propose that PDP resulting from *SLCO2A1* defects is a sex-dependent autosomal recessive disease, and women homozygous for pathogenic *SLCO2A1* mutations may

This article is protected by copyright. All rights reserved.

develop late-onset PDP symptoms. The explanation of mild and low-frequency disease in women remains unclear. Hatano et al. suggested that reactivity to prostaglandin was milder in women than in men.⁹ Ospina et al. reported that estrogen suppressed IL-1 β -mediated induction of COX-2 pathway in rat cerebral blood vessels.¹⁰ These data imply that decreased level of estrogen play a role in the sex-dependent pathogenesis. Further analyses will clarify this issue.

In conclusion, we have described the first female case of PDP with compound heterozygous *SLCO2A1* mutations. Her atypical history shows minimal pachydermia impact.

Acknowledgements

We thank the patient and her family members for their generous cooperation. We also thank Ms. A. Maruta for secretarial assistance and Ms. M. Furuhashi for her excellent technical assistance.

References

- 1 Castori M, Sinibaldi L, Mingarelli R *et al.* Pachydermoperiostosis: an update. *Clin Genet* 2005; **68**:477-486.

This article is protected by copyright. All rights reserved.

2 Touraine A, Solente G, Gole L. Un syndrome oste´odermpathique: la pachydermie plicature´e avec pachype´riostose des extre´mite´s. *Presse Med* 1935; **43**:1820-1824.

3 Uppal S, Diggle C, Carr IM *et al.* Mutations in 15-hydroxyprostaglandin dehydrogenase cause primary hypertrophic osteoarthropathy. *Nat Genet* 2008; **40**:789-793.

4 Sasaki T, Niizeki H, Shimizu A *et al.* Identification of mutations in the prostaglandin transporter gene SLCO2A1 and its phenotype-genotype correlation in Japanese patients with pachydermoperiostosis. *J Dermatol Sci* 2012; **68**:36-44.

5 Zhang Z, Xia W, He J *et al.* Exome sequencing identifies SLCO2A1 mutations as a cause of primary hypertrophic osteoarthropathy. *Am J Hum Genet* 2012; **90**:125-132.

6 Diggle CP, Parry DA, Logan CV *et al.* Prostaglandin transporter mutations cause pachydermoperiostosis with myelofibrosis. *Hum Mutat* 2012; **33**:1175-81.

7 Zhang Z, He JW, Fu WZ *et al.* Mutations in the SLCO2A1 gene and primary hypertrophic osteoarthropathy: a clinical and biochemical characterization. *J Clin Endocrinol Metab* 2013; **98**:E923-33.

This article is protected by copyright. All rights reserved.

8 Seifert W, Kuhnisch J, Tüysüz B *et al.* Mutations in the prostaglandin transporter encoding gene SLCO2A1 cause primary hypertrophic osteoarthropathy and isolated digital clubbing. *Hum Mutat* 2012; **33**:660-664.

9 Hatano R, Onoe K, Obara M *et al.* Sex hormones induce a gender-related difference in renal expression of a novel prostaglandin transporter, OAT-PG, influencing basal PGE2 concentration. *Am J Physiol Renal Physiol* 2012; **302**:F342-9.

10 Ospina JA, Brevig HN, Krause DN, Duckles SP. Estrogen suppresses IL-1beta-mediated induction of COX-2 pathway in rat cerebral blood vessels. *Am J Physiol Heart Circ Physiol* 2004; **286**:H2010-9.

Figure legends

Fig. 1 Clinical features including a radiograph

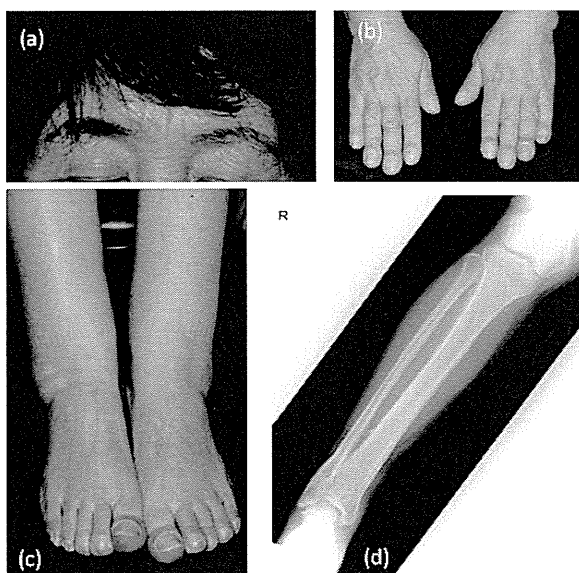
Panel (a) shows the facial appearance of the patients. Furrowing of the forehead and greasiness of facial skin are negligible. Panel (b) shows digital clubbing. Panel (c) shows clubbing of toes and cylindrical enlargement of the legs. Panel (d) shows periosteal hyperostosis of the tibia and fibula.

This article is protected by copyright. All rights reserved.

Fig. 2 Two novel mutations in *SLCO2A1* were identified by the Sanger method

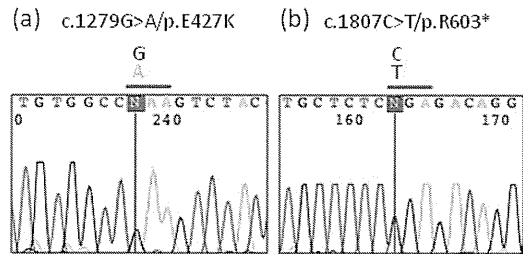
CodonCode Aligner (CodonCode Corporation, Centerville, MA, USA) was used to assemble sequences and detect mutations.

(a) One non-synonymous mutation: c.1279G>A/p.E427K (P1). (b) The premature stop codon mutations: c.1807C>T/p.R603*.



Niizeki et al:
Fig 1

This article is protected by copyright. All rights reserved.



Niizeki et al:
Fig2

Multiple Café au Lait Spots in Familial Patients With *MAP2K2* Mutation

Toshiki Takenouchi,¹ Atsushi Shimizu,² Chiharu Torii,³ Rika Kosaki,⁴ Takao Takahashi,¹ Hideyuki Saya,⁵ and Kenjiro Kosaki^{3*}

¹Department of Pediatrics, Keio University School of Medicine, Tokyo, Japan

²Department of Molecular Biology, Keio University School of Medicine, Tokyo, Japan

³Center for Medical Genetics, Keio University School of Medicine, Tokyo, Japan

⁴Division of Medical Genetics, National Center for Child Health and Development, Tokyo, Japan

⁵Division of Gene Regulation, Institute for Advanced Medical Research, Keio University School of Medicine, Tokyo, Japan

Manuscript Received: 20 May 2013; Manuscript Accepted: 13 September 2013

Recent advances in genetic diagnostic technologies have made the classic disease nosology highly complicated. This situation is exemplified by rasopathies, among which neurofibromatosis type 1 and Noonan syndrome represent prototypic entities. The former condition is characterized by multiple café au lait spots and neurofibromas, while the latter is characterized by distinct facial features, webbed neck, congenital heart disease, and a short stature. On rare occasions, the features of both neurofibromatosis and Noonan syndrome co-exist within an individual; such patients are diagnosed as having neurofibromatosis–Noonan syndrome. Here, we report familial patients with multiple café au lait spots and Noonan syndrome-like facial features. A mutation analysis unexpectedly revealed a mutation in *MAP2K2* in both the proband and his mother. The proband fulfilled the diagnostic criteria for neurofibromatosis type 1, but his mother did not. Their phenotype was not consistent with that of cardio-facio-cutaneous syndrome, which is classically known to be associated with *MAP2K2* mutations. The mother of the proband had cervical cancer at the age of 23 years, consistent with the oncogenic tendency associated with rasopathies. The phenotypic combination of multiple café au lait spots and Noonan syndrome-like facial features suggested a diagnosis of neurofibromatosis–Noonan syndrome. Whether this condition represents a discrete disease entity or a variable expression of neurofibromatosis type 1 has long been debated. The present observation suggests that some perturbation in the RAS/MAPK signaling cascade results in multiple café au lait spots, a key diagnostic phenotype of rasopathies, although the exact mechanism remains to be elucidated. © 2013 Wiley Periodicals, Inc.

Key words: café au lait spots; rasopathies; *MAP2K2*; neurofibromatosis type 1; Noonan syndrome; neurofibromatosis–Noonan syndrome

INTRODUCTION

A classic genetic syndrome is defined based on a combination of distinctive phenotypic features and causative genes. However,

How to Cite this Article:

Takenouchi T, Shimizu A, Torii C, Kosaki R, Takahashi T, Saya H, Kosaki K. 2014. Multiple café au lait spots in familial patients with *MAP2K2* mutation. *Am J Med Genet Part A* 164A:392–396.

recent advances in molecular diagnostic technology have revealed significant phenotypic overlaps among classic syndromes, making genetic disease nosology more complicated than ever [Viskochil, 2011].

The RAS/mitogen activated protein kinase (MAPK) pathway is essential for the regulation of the cell cycle and differentiation. Somatic mutations in the RAS/MAPK signaling cascade can cause cancers, whereas germline mutations are responsible for several rare genetic conditions such as neurofibromatosis type 1 (OMIM 162200), Noonan (OMIM 163950), LEOPARD (OMIM 151100), Costello (OMIM 218040), and cardio-facio-cutaneous (CFC; OMIM 115150) syndromes. Given the considerable phenotypic and molecular overlaps among these conditions caused by germline RAS/MAPK mutations, they are collectively termed “rasopathies” [Tidyman and Rauen, 2009; Gripp and Lin, 2012].

Grant sponsor: Ministry of Health, Labour and Welfare, Japan; Grant number: H23-013.

Abbreviations: CFC, cardio-facio-cutaneous; NFNS, neurofibromatosis–Noonan syndrome; MAPK, mitogen activated protein kinase.

*Correspondence to:

Kenjiro Kosaki, M.D., Center for Medical Genetics, Keio University School of Medicine, 35 Shinanomachi, Shinjuku-ku, Tokyo 160-8582, Japan. E-mail: kkosaki@z3.keio.jp

Article first published online in Wiley Online Library

(wileyonlinelibrary.com): 5 December 2013

DOI 10.1002/ajmg.a.36288

Among rasopathies, neurofibromatosis type 1 and Noonan syndrome represent prototypic entities: neurofibromatosis type 1 is an autosomal dominant disorder caused by loss-of-function mutations in the *NF1* gene on chromosome 17q11.2. This relatively common genetic condition is characterized by multiple café au lait spots and neurofibromas. Noonan syndrome is caused by heterozygous mutations in the *PTPN11*, *SOS1*, *KRAS*, *RAF1*, *BRAF*, *NRAS*, *CBL*, and *MAP2K1* genes and is characterized by hypertelorism, ptosis and low-set ears, webbed neck, congenital heart disease, chest deformities, postnatal reduced growth, and cryptorchidism [Cirstea et al., 2010; Martinelli et al., 2010; Tartaglia et al., 2010]. In rare cases, features of neurofibromatosis type 1 and Noonan syndrome co-exist, and such patients are classified as having neurofibromatosis–Noonan syndrome (NFNS) (OMIM 601321) [Allanson et al., 1985; Abuelo and Meryash, 1988]. Since patients with mutations in the *NF1* and *PTPN11* genes can present as having NFNS [Bertola et al., 2005; De Luca et al., 2005], it has long been debated whether NFNS is a discrete entity [Opitz and Weaver, 1985; Carey, 1998]. Here, we report familial patients with multiple café au lait spots and Noonan syndrome-like facial features who carried mutations in *MAP2K2* (*MEK2*), a component of the RAS/MAPK signaling cascade.

CLINICAL REPORT

The proband was born at term via vaginal delivery in a breech position, with a birth weight of 3,535 g (+1.3 SD) and a length of 46.3 cm (–1.3 SD). He was noted as having multiple café au lait

spots at birth. At the age of 6 years, he attended regular school, and a physical examination showed a short stature with a height of 107.5 cm (–2.0 SD) and a weight of 19.3 kg (–0.7 SD), multiple (>6) café au lait spots, axillary and inguinal frecklings, hypertelorism, downward-slanting palpebral fissures, and a webbed neck (Fig. 1A). No Lisch nodules were present. An echocardiogram was normal. The results of a brain magnetic resonance imaging examination at the age of 2 years were normal. The proband's biological mother had multiple (>6) café au lait spots and no signs of intellectual disability. Her past medical history was significant for cervical cancer, for which she had undergone a total hysterectomy at the age of 27 years. At the age of 31 years, her height was 158 cm (–0.1 SD), and her weight was 54 kg (+0.3 SD). She had multiple café au lait spots, but did not exhibit any intertriginous frecklings (Fig. 1B).

MOLECULAR ANALYSIS

We performed target-selected resequencing using a custom-designed mutation analysis panel (SureSelect XT-Auto; Agilent Technologies, Santa Clara, CA) [manuscript in preparation], which included 100 common genes described in a classic textbook of dysmorphology: Smith's Recognizable Patterns of Human Malformation [Jones, 2006]. Included within the gene list were major molecules in the RAS/MAPK signaling cascade, including *NF1*, *PTPN11*, *SOS1*, *KRAS*, *RAF1*, *BRAF*, *NRAS*, *CBL*, *SHOC2*, *MAPK1*, *MAP2K1*, and *MAP2K2*. This panel was run on a next-generation sequencer (MiSeq; Illumina, Inc., San Diego, CA). After

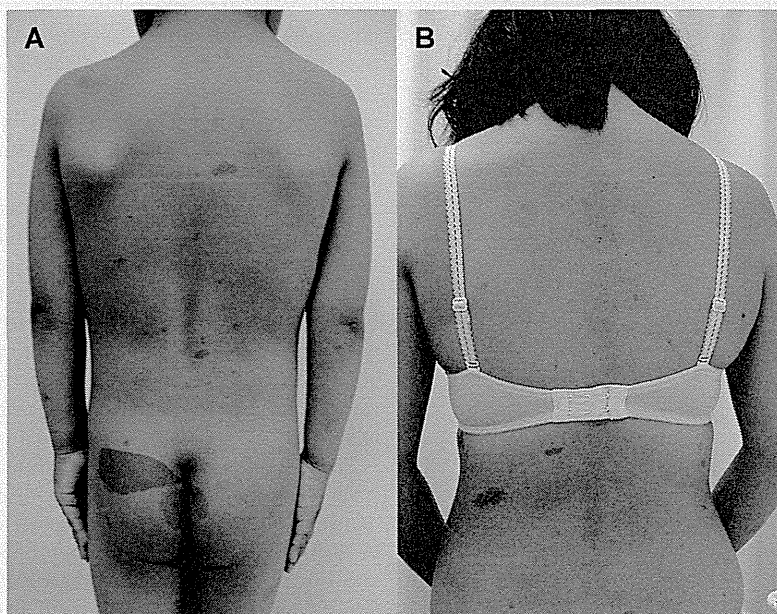


FIG. 1. Multiple café au lait spots on the proband and his mother. Note the scattered multiple café (>6) au lait spots with well-demarcated margins in the proband (A) and his mother (B) and the webbed neck in the proband (A).

we aligned the sequencing reads to the reference human genome sequence (hs37d5) using BWA [Li and Durbin, 2009], local realignment around indels and base quality score recalibration were performed using Genome Analysis Toolkit software [McKenna et al., 2010]. Duplicate reads were removed using Picard (<http://picard.sourceforge.net>). This analysis revealed that the proband and his mother were heterozygous for a missense mutation in exon 6 of *MAP2K2* (c. 667A>G, p.Met223Val). This p.Met223Val mutation was a novel variant that is not present in the dbSNP137, 1,000 genomes, ESP6500, or our in-house Japanese SNPs dataset. We confirmed the mutation detected in the proband and his mother using Sanger sequencing and the following primers: forward, cctcacagcctgaaatggt; reverse, agagcagcagggaggagag. In silico functional evaluations of the p.Met223Val substitution in *MAP2K2* using five different prediction programs suggested that this mutation is pathogenic (PhyloP, “conserved” [score 0.9932]; PolyPhen2, “probably damaging” [0.8690]; SIFT, “damaging” [0.9900]; MutationTaster, “disease_causing” [1.0000]; and LRT, “deleterious” [1.0000]). p.Met223Val is evolutionarily conserved among many species and is located between two sites, p.Ser222 and p.Ser226, that are phosphorylated by RAF family proteins [Alessi et al., 1994] (Fig. 2). In addition, a crystal structure analysis indicated that the amino acid at position 223 is a substrate-binding residue [Ohren et al., 2004]. Therefore, p.Met223Val would alter the activity of *MAP2K2*, affecting downstream signaling. Direct sequencing of the *NF1* gene did not reveal any pathologic mutations in either the proband or his mother.

DISCUSSION

Here, we report familial patients with multiple café au lait spots and Noonan syndrome-like facial features who carried mutations

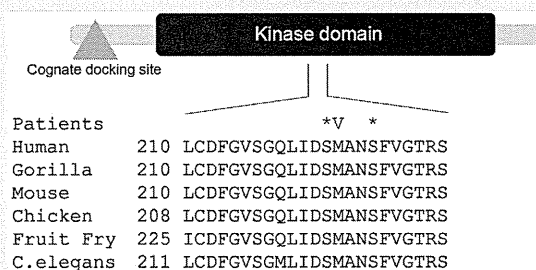


FIG. 2. Schematic representation of the *MAP2K2* structure and partial amino acid sequence alignment from the proband, human reference, and other species. Note that the amino acid sequence alignments in humans and other species were highly conserved. The p.Met223Val in the presently reported patients is marked at the top of the alignments as “V.” Note that p.Met223Val is located between two sites, p.Ser222 and p.Ser226 (indicated as asterisks) located in the center of the kinase domain and that are phosphorylated by RAF proteins.

in *MAP2K2*. The identification of the *MAP2K2* mutations had diagnostic and therapeutic implications. The maternal history of cervical cancer at a very young age, that is, 27 years, suggested that this specific mutation, that is, p.Met223Val, may predispose an individual to cancer. This observation was consistent with the effects of somatic gain-of-function mutations in *MAP2K2* in melanoma patients [Nikolaev et al., 2012]. Although her cervical cancer was successfully resected, MEK inhibitors may be useful as a therapeutic option in the case of cancer recurrence.

In retrospect, the diagnostic journey based on the patients’ phenotype was rather challenging. The presence of multiple café au lait spots is a cardinal feature of neurofibromatosis type 1. Indeed, the proband fulfilled the diagnostic criteria for neurofibromatosis type 1, but his mother did not. More specifically, the mother, who was 31 years of age, did not exhibit intertriginous freckling. The absence of this finding during the third decade of life practically excludes a diagnosis of neurofibromatosis type 1. Instead, the proband had Noonan syndrome-like facial features, and his mother had cervical cancer at a very young age. This phenotypic constellation did not point to a specific disease entity, but strongly suggested that they had some form of rasopathies. The targeted mutation analysis panel consisting of the causative genes of major dysmorphic syndromes, including major molecules in the RAS/MAPK signaling cascade, successfully identified pathologic mutations in *MAP2K2*.

The identification of the causative gene in *MAP2K2* was rather unexpected. Typically, the germline mutations in *MAP2K2* have been associated with a CFC syndrome phenotype [Rodriguez-Viciana et al., 2006]. The classic phenotypic features of CFC syndrome include a relatively severe degree of developmental delay, heart defects, and eczematous skin, together with Noonan syndrome-like facial features [Narumi et al., 2007]. Interestingly, the presently reported patients did not have any of the above-mentioned features except for the Noonan-like facial features. Furthermore, the presence of multiple (>6), but not 2 or fewer, café au lait spots was suggestive of a cutaneous feature in neurofibromatosis type 1 [Siegel et al., 2011]. A review of familial patients with *MAP2K2* mutation confirmed a heterogeneous clinical picture consisting of learning disability, pulmonic stenosis, and café au lait spots (Table I) [Rauen et al., 2010; Linden and Price, 2011]. Overall, the phenotypic features of the family, including the Noonan syndrome-like facial features and multiple café au lait spots, in the absence of cardiac abnormalities or intellectual disability can be regarded as NFNS. The vertical transmission of the trait in the family is also compatible with NFNS [Quattrin et al., 1987].

The observation that *MAP2K2* mutation can lead to the NFNS phenotype casts another informative piece to the long-standing controversy of whether NFNS represents a discrete disease entity or a variable expression of neurofibromatosis type 1 [Opitz and Weaver, 1985]. We have shown that NFNS is heterogeneous at a clinical and a molecular level, as Carey exactly pointed out in his editorial 15 years ago [Carey, 1998]. What kind of perturbation in the RAS/MAPK signaling cascade results in café au lait spots, a key diagnostic phenotype in rasopathies, remains to be elucidated.

TABLE I. Clinical Characteristics of Familial Patients With *MAP2K2* Mutations

Reference	Patient no.	Age	Exon	<i>MAP2K2</i> mutation	Learning difficulty	Pulmonic stenosis	Cafe au lait spots
Classic CFC Rauen et al. [2010]	V-2	7 months	3	p.Pro128Gln	Present	Present	Absent
	IV-8	27 years			N/A	Present	Present
	V-1	7 years			Present	Absent	Present
	III-6	42 years			Present	Absent	Absent
	II-2	78 years			Present	Absent	Absent
	III-3	58 years			^a Present	Absent	Absent
	IV-5	18 years			Present	Absent	Absent
	IV-6	14 years			Present	Absent	Absent
	Linden and Price [2011]	II-2			68 years	3	p.Gly132Asp
III-1		46 years	Present	Present	Absent		
III-3		40 years	Present	Present	Absent		
The present report	Mother	31 years	6	p.Met223Val	Absent	Absent	Present
	Son	6 years			^b Absent	Absent	Present

CFC, cardio-facio-cutaneous syndrome.
^aTics.
^bPatient was too young for a formal evaluation.

ACKNOWLEDGMENTS

We thank Namiko Saito and Yumi Obayashi for their technical assistance in article preparation. We thank Yuji Sugie for his special support in the current research project. This work was supported by Research on Applying Health Technology (H23-013) from the Ministry of Health, Labour and Welfare, Japan.

REFERENCES

- Abuelo DN, Meryash DL. 1988. Neurofibromatosis with fully expressed Noonan syndrome. *Am J Med Genet* 29:937–941.
- Alessi DR, Saito Y, Campbell DG, Cohen P, Sithanandam G, Rapp U, Ashworth A, Marshall CJ, Cowley S. 1994. Identification of the sites in MAP kinase kinase-1 phosphorylated by p74raf-1. *EMBO J* 13:1610–1619.
- Allanson JE, Hall JG, Van Allen MI. 1985. Noonan phenotype associated with neurofibromatosis. *Am J Med Genet* 21:457–462.
- Bertola DR, Pereira AC, Passetti F, de Oliveira PS, Messiaen L, Gelb BD, Kim CA, Krieger JE. 2005. Neurofibromatosis–Noonan syndrome: Molecular evidence of the concurrence of both disorders in a patient. *Am J Med Genet Part A* 136A:242–245.
- Carey JC. 1998. Neurofibromatosis–Noonan syndrome. *Am J Med Genet* 75:263–264.
- Cirstea IC, Kutsche K, Dvorsky R, Gremer L, Carta C, Horn D, Roberts AE, Lepri F, Merbitz-Zahradnik T, Konig R, Kratz CP, Pantaleoni F, Dentici ML, Joshi VA, Kucherlapati RS, Mazzanti L, Mundlos S, Patton MA, Silengo MC, Rossi C, Zampino G, Digilio C, Stuppia L, Seemanova E, Pennacchio LA, Gelb BD, Dallapiccola B, Wittinghofer A, Ahmadian MR, Tartaglia M, Zenker M. 2010. A restricted spectrum of NRAS mutations causes Noonan syndrome. *Nat Genet* 42:27–29.
- De Luca A, Bottillo I, Sarkozy A, Carta C, Neri C, Bellacchio E, Schirinzi A, Conti E, Zampino G, Battaglia A, Majore S, Rinaldi MM, Carella M, Marino B, Pizzuti A, Digilio MC, Tartaglia M, Dallapiccola B. 2005. NF1 gene mutations represent the major molecular event underlying neurofibromatosis–Noonan syndrome. *Am J Hum Genet* 77:1092–1101.
- Gripp KW, Lin AE. 2012. Costello syndrome: A Ras/mitogen activated protein kinase pathway syndrome (rasopathy) resulting from HRAS germline mutations. *Genet Med* 14:285–292.
- Jones KL. 2006. *Smith's recognizable patterns of human malformation*. Philadelphia, PA: Elsevier, Saunders.
- Li H, Durbin R. 2009. Fast and accurate short read alignment with Burrows–Wheeler transform. *Bioinformatics* 25:1754–1760.
- Linden HC, Price SM. 2011. Cardiofaciocutaneous syndrome in a mother and two sons with a MEK2 mutation. *Clin Dysmorphol* 20:86–88.
- Martinelli S, De Luca A, Stellacci E, Rossi C, Checquolo S, Lepri F, Caputo V, Silvano M, Buscherini F, Consoli F, Ferrara G, Digilio MC, Cavaliere ML, van Hagen JM, Zampino G, van der Burgt I, Ferrero GB, Mazzanti L, Screpanti I, Yntema HG, Nillesen WM, Savarirayan R, Zenker M, Dallapiccola B, Gelb BD, Tartaglia M. 2010. Heterozygous germline mutations in the CBL tumor-suppressor gene cause a Noonan syndrome-like phenotype. *Am J Hum Genet* 87:250–257.
- McKenna A, Hanna M, Banks E, Sivachenko A, Cibulskis K, Kernysky A, Garimella K, Altshuler D, Gabriel S, Daly M, DePristo MA. 2010. The Genome Analysis Toolkit: A MapReduce framework for analyzing next-generation DNA sequencing data. *Genome Res* 20:1297–1303.
- Narumi Y, Aoki Y, Niihori T, Neri G, Cave H, Verloes A, Nava C, Kavamura MI, Okamoto N, Kurosawa K, Hennekam RC, Wilson LC, Gillissen-Kaesbach G, Wieczorek D, Lapunzina P, Ohashi H, Makita Y, Kondo I, Tsuchiya S, Ito E, Sameshima K, Kato K, Kure S, Matsubara Y. 2007. Molecular and clinical characterization of cardio-facio-cutaneous (CFC) syndrome: Overlapping clinical manifestations with Costello syndrome. *Am J Med Genet Part A* 143A:799–807.
- Nikolaev SI, Rimoldi D, Iseli C, Valsesia A, Robyr D, Gehrig C, Harshman K, Guipponi M, Bukach O, Zoete V, Michielin O, Muehlethaler K, Speiser D, Beckmann JS, Xenarios I, Halazonetis TD, Jongeneel CV, Stevenson

- BJ, Antonarakis SE. 2012. Exome sequencing identifies recurrent somatic MAP2K1 and MAP2K2 mutations in melanoma. *Nat Genet* 44:133–139.
- Ohren JF, Chen H, Pavlovsky A, Whitehead C, Zhang E, Kuffa P, Yan C, McConnell P, Spessard C, Banotai C, Mueller WT, Delaney A, Omer C, Sebolt-Leopold J, Dudley DT, Leung IK, Flamme C, Warmus J, Kaufman M, Barrett S, Teclé H, Hasemann CA. 2004. Structures of human MAP kinase kinase 1 (MEK1) and MEK2 describe novel noncompetitive kinase inhibition. *Nat Struct Mol Biol* 11:1192–1197.
- Opitz JM, Weaver DD. 1985. The neurofibromatosis–Noonan syndrome. *Am J Med Genet* 21:477–490.
- Quattrin T, McPherson E, Putnam T. 1987. Vertical transmission of the neurofibromatosis/Noonan syndrome. *Am J Med Genet* 26:645–649.
- Rauen KA, Tidyman WE, Estep AL, Sampath S, Peltier HM, Bale SJ, Lacassie Y. 2010. Molecular and functional analysis of a novel MEK2 mutation in cardio-facio-cutaneous syndrome: Transmission through four generations. *Am J Med Genet Part A* 152A:807–814.
- Rodriguez-Viciana P, Tetsu O, Tidyman WE, Estep AL, Conger BA, Cruz MS, McCormick F, Rauen KA. 2006. Germline mutations in genes within the MAPK pathway cause cardio-facio-cutaneous syndrome. *Science* 311:1287–1290.
- Siegel DH, McKenzie J, Frieden IJ, Rauen KA. 2011. Dermatological findings in 61 mutation-positive individuals with cardiofaciocutaneous syndrome. *Br J Dermatol* 164:521–529.
- Tartaglia M, Zampino G, Gelb BD. 2010. Noonan syndrome: Clinical aspects and molecular pathogenesis. *Mol Syndromol* 1:2–26.
- Tidyman WE, Rauen KA. 2009. The RASopathies: Developmental syndromes of Ras/MAPK pathway dysregulation. *Curr Opin Genet Dev* 19:230–236.
- Viskochil DH. 2011. Disorders of the ras pathway: An introduction. *Am J Med Genet Part C* 157C:79–82.

