

Table 4. The prenatal risk-stratified classification described using the O/E LHR instead of the L/T ratio

Group A	O/E LHR \geq 25% with liver-down
Group B	O/E LHR \geq 25% with liver-up *, or O/E LHR $<$ 25% with liver-down
Group C	O/E LHR $<$ 25% with liver-up *

*, Liver-up, liver occupying more than one-third of the thoracic space

Figure 1

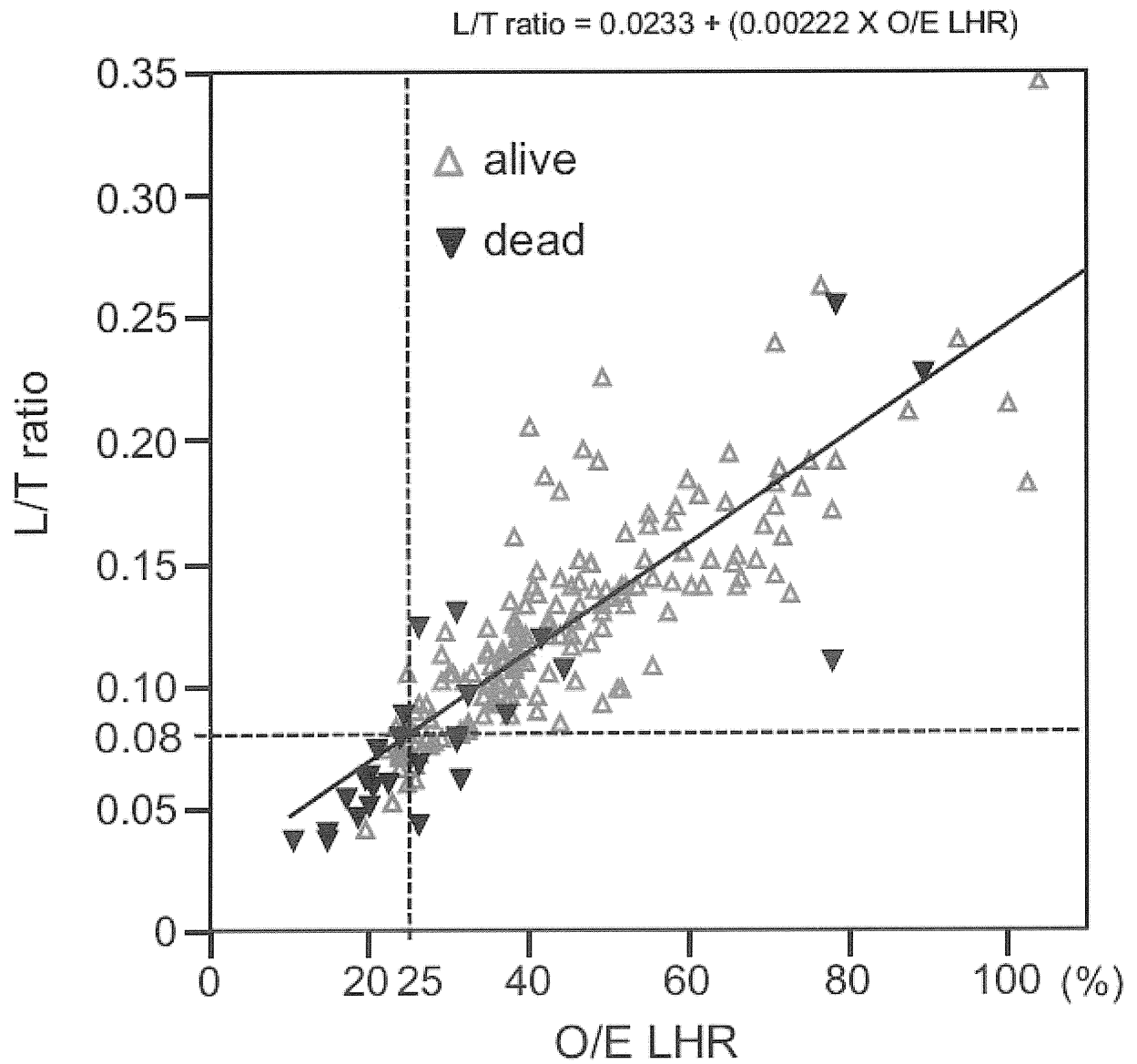


Figure 2

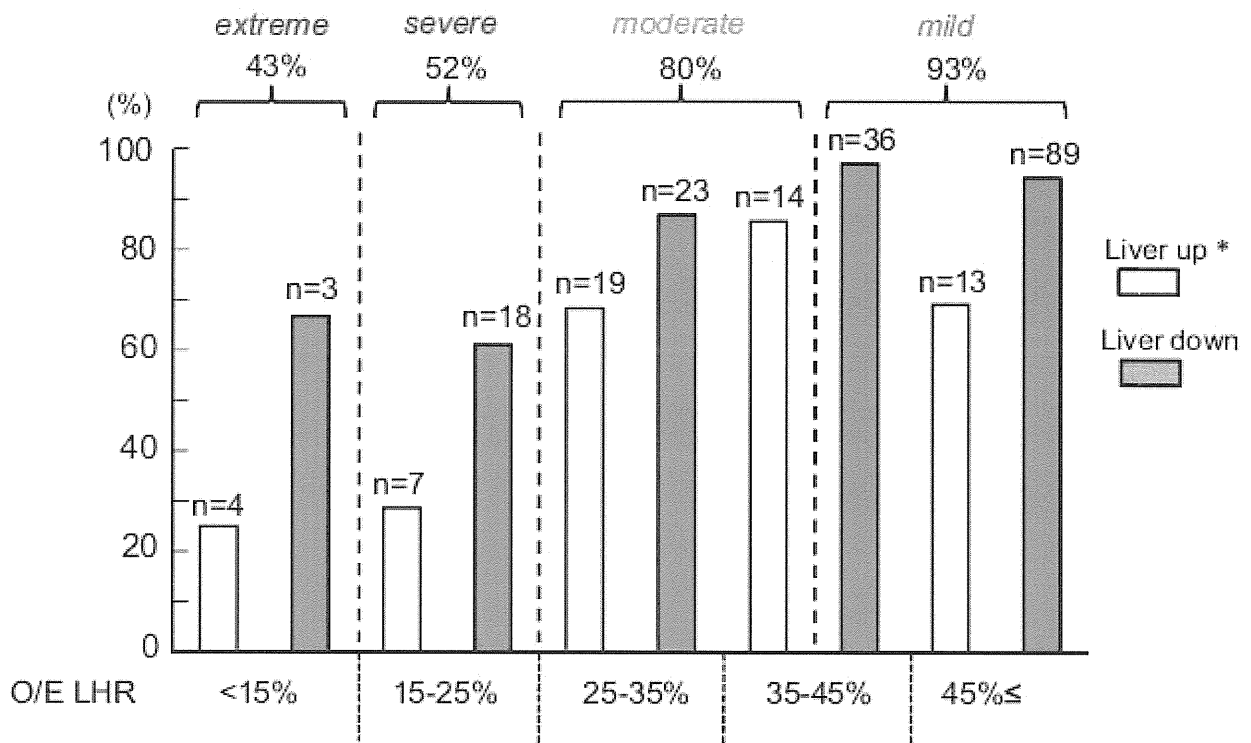
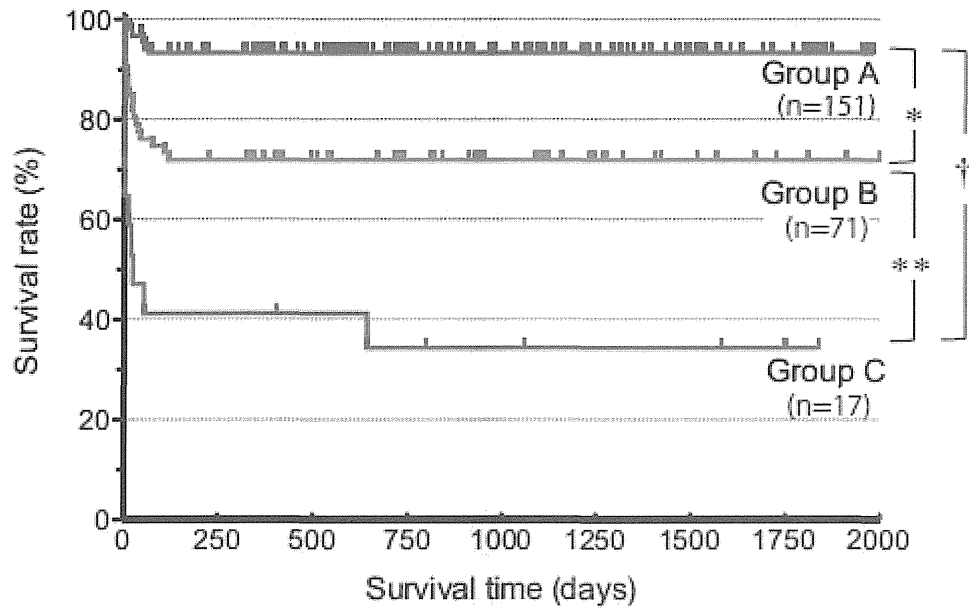


Figure 3



A

