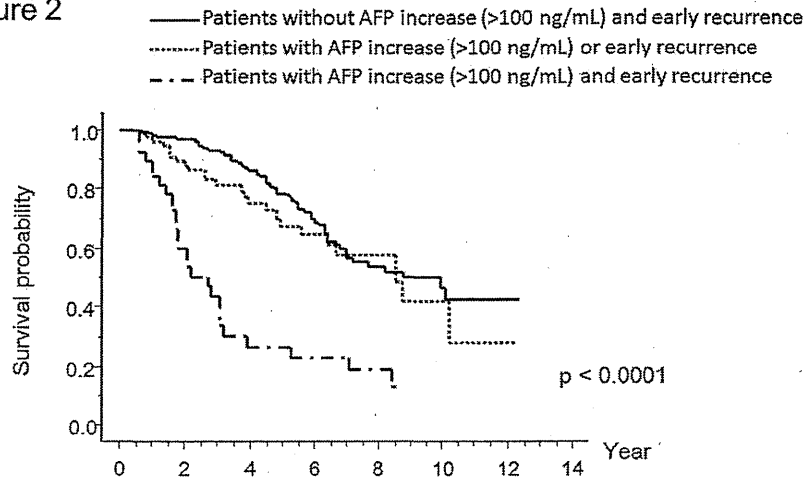


Figure 2



254x190mm (300 x 300 DPI)

Accept

## Non-invasive prediction of hepatocellular carcinoma development using serum fibrosis marker in chronic hepatitis C patients

Nobuharu Tamaki · Masayuki Kurosaki · Shuya Matsuda · Masaru Muraoka · Yutaka Yasui · Shoko Suzuki · Takanori Hosokawa · Ken Ueda · Kaoru Tsuchiya · Hiroyuki Nakanishi · Jun Itakura · Yuka Takahashi · Yasuhiro Asahina · Namiki Izumi

Received: 13 June 2013 / Accepted: 12 November 2013  
© Springer Japan 2013

### Abstract

**Background** The FIB-4 index is a simple formula to predict liver fibrosis. This study aimed to evaluate the utility of the FIB-4 index and associated time-course changes as a predictor of hepatocellular carcinoma (HCC) development.

**Methods** A total of 171 chronic hepatitis C patients who underwent paired liver biopsies and 875 patients who underwent a single liver biopsy (validation group) were investigated during mean follow-up periods of 6.4 and 5.9 years, respectively. All patients had received interferon therapy and had not achieved a sustained virological response. Factors associated with HCC development were analyzed in these patients.

**Results** HCC developed in 30 patients in the paired biopsy group and 89 patients in the validation group. Univariate analysis demonstrated that the FIB-4 index  $>3.25$  and change in the FIB-4 index per year ( $\Delta\text{FIB-4}/\text{year}$ )  $\geq 0.3$  were predictive factors for HCC development in both groups. Multivariate analysis in the combined population revealed that these two factors were independent. The hazard ratio (HR) for the FIB-4 index  $>3.25$  was 2.7 ( $p < 0.001$ ) and  $\Delta\text{FIB-4}/\text{year} \geq 0.3$  was 1.8 ( $p = 0.003$ ). Patients with a FIB-4 index  $>3.25$  and a  $\Delta\text{FIB-4}/\text{year} \geq 0.3$  were defined as high

risk, and those with a FIB-4 index  $\leq 3.25$  and a  $\Delta\text{FIB-4}/\text{year} < 0.3$  were defined as low risk. The HR of HCC development in patients at high risk was 7.3 (95 % confidence interval 4.3–12.5,  $p < 0.001$ ).

**Conclusions** It was possible to define a group at high risk of developing HCC by intermittently measuring the FIB-4 index and considering time-course changes in this index.

**Keywords** FIB-4 index · Hepatocellular carcinoma · Chronic hepatitis C · Liver fibrosis · Non-invasive

### Introduction

Persistent hepatitis C virus infection induces chronic hepatitis and eventually develops into liver cirrhosis and hepatocellular carcinoma (HCC) [1]. An advanced stage of liver fibrosis in chronic hepatitis C is associated with HCC development and complications such as esophageal variceal bleeding and liver failure [2, 3]. Therefore, accurate evaluation of the stage of liver fibrosis is necessary to predict its progression to liver cirrhosis and HCC development for optimal clinical disease management.

Although the gold standard for evaluating liver fibrosis is liver biopsy [4, 5], it has been reported that this method may be inaccurate because of sampling errors and inter-observer variations [6, 7]. Moreover, because the invasiveness of liver biopsy precludes repeated examinations [8], evaluation of liver fibrosis time-course changes is difficult.

Recently, various non-invasive methods for evaluating liver fibrosis have rapidly improved as alternatives to liver biopsy. Liver fibrosis was reportedly predicted by transient elastography [9, 10], acoustic radiation force impulse imaging [11], and real-time tissue elastography [12]. In

N. Tamaki · M. Kurosaki · S. Matsuda · M. Muraoka · Y. Yasui · S. Suzuki · T. Hosokawa · K. Ueda · K. Tsuchiya · H. Nakanishi · J. Itakura · Y. Takahashi · N. Izumi (✉)  
Department of Gastroenterology and Hepatology, Musashino Red Cross Hospital, 1-26-1 Kyonan-cho, Musashino, Tokyo 180-8610, Japan  
e-mail: nizumi@musashino.jrc.or.jp

Y. Asahina  
Department of Gastroenterology and Hepatology,  
Tokyo Medical and Dental University, Tokyo, Japan

addition, methods using blood test data, including the aspartate aminotransferase (AST)/alanine aminotransferase (ALT) ratio [13], AST/platelet ratio index [14], the Forns test [15], and the Fibro test [16] have been reported to be useful. These tests have exhibited high accuracy in predicting severe liver fibrosis.

The FIB-4 index is a simple formula used for predicting liver fibrosis based on the standard biochemical values (AST, ALT and platelet count) and age, and is reported to be significantly useful for predicting advanced liver fibrosis [17–19]. Because the FIB-4 index can be repeatedly calculated using age and general biochemistry results, it offers the advantage of easy follow-up of time-course changes with repeated measurements. We have reported that time-course changes in the FIB-4 index correlate with changes in liver fibrosis, and advancement of liver fibrosis can be predicted by changes in the FIB-4 index [20].

Progression of liver fibrosis in chronic hepatitis C is closely associated with the high risk of developing HCC [2, 3]. In addition, we have reported that the risk of developing HCC increases with aging [21]. Because the FIB-4 index correlates with liver fibrosis and considers age, it is possible that it can also be used to predict the risk of developing HCC. In this study we investigated the significance of the FIB-4 index and time-course changes in the FIB-4 index as predictors of HCC development.

## Methods

### Paired biopsy group

Study subjects comprised 314 chronic hepatitis C patients who underwent liver biopsies twice between 1991 and 2010 at Musashino Red Cross Hospital. The average interval between two biopsies was  $4.9 \pm 2.9$  years. The subject characteristics were detailed previously [20]. All patients were treated by interferon after the first liver biopsy and had non-sustained virological response. They underwent the second biopsy and were treated again by interferon. After excluding 110 patients who achieved a sustained virological response with the second interferon therapy, 171 patients were followed-up  $\geq 1$  year and were included in this analysis. Exclusion criteria comprised the follows: (1) coinfection with hepatitis B virus or human immunodeficiency virus, (2) alcohol abuse, (3) the presence of nonalcoholic steatohepatitis, (4) the presence of HCC at entry, (5) interval between paired biopsies  $< 1.5$  years, and (6) length of biopsy sample  $< 15$  mm. The relationship between HCC development and the FIB-4 index at liver biopsy or change in the FIB-4 index between the two liver biopsies was investigated. To determine the optimal cut-off values of change in the FIB-4 index for prediction of HCC development, patients with

HCC development within 10 years were considered. Time zero was set at the date of the second biopsy.

### Single liver biopsy group (validation group)

A total of 1,377 patients received interferon therapy after liver biopsy at Musashino Red Cross Hospital between 1991 and 2010 and were followed-up for  $\geq 1$  year after treatment. Of those in follow-up, 875 patients who exhibited non-sustained virological response were included in the validation group. Exclusion criteria were the same as those for the paired biopsy group. Because these patients did not undergo a second liver biopsy, change in the FIB-4 index was calculated between the liver biopsy and 1, 2 and 3 years after the end of interferon therapy. The relationship between HCC development and the FIB-4 index at liver biopsy or change in the FIB-4 index was investigated. Time zero was set at the date of liver biopsy.

### Ethical approval

Written informed consent was obtained from each patient in the paired biopsy group and in the validation group, and the study protocol conformed to the ethical guidelines of the Declaration of Helsinki and was approved by the institutional ethics review committees.

### Histological evaluation

Liver biopsy specimens were obtained using 13G needles laparoscopically, or by percutaneous ultrasound-guided liver biopsy using 15G needles. Specimens were fixed, paraffin-embedded, and stained with hematoxylin–eosin and Masson's trichrome. A minimum 15 mm biopsy sample was required for diagnosis. All liver biopsy samples were independently evaluated by two senior pathologists who were blinded to the clinical data. Fibrosis staging was categorized according to the METAVIR score: F0, no fibrosis; F1, portal fibrosis without septa; F2, portal fibrosis with few septa; F3, numerous septa without cirrhosis; and F4, cirrhosis [22]. When staging was inconsistent between the two pathologists, an appropriate stage was determined by discussion between the two. Fibrosis progression was defined as a 1 point or more increase in the METAVIR score, and fibrosis non-progression was defined as no change or a 1 point or more decrease in the METAVIR score.

### HCC surveillance and diagnosis

Ultrasonography and a blood test including tumor markers were performed every 3–6 months for HCC surveillance. When tumor marker levels showed an abnormal rise and/or

abdominal ultrasonography suggesting a lesion suspicious for HCC, contrast-enhanced computed tomography, magnetic resonance imaging or angiography were performed. HCC was diagnosed for tumors showing vascular enhancement at an early phase with washout at a later phase. Tumor biopsy was used to diagnose tumors with non-typical imaging findings.

#### Clinical and biological data

The age and gender of the patients were recorded. Serum samples were collected within 1 month prior to the liver biopsy. The following variables were obtained by analyzing the serum samples: AST, ALT, and platelet count. The FIB-4 index was calculated according to the following formula:  $\text{FIB-4 index} = \text{age [years]} \times \text{AST [IU/L]} / (\text{platelets [10}^9\text{/L]} \times \text{ALT [IU/L]}^{1/2})$ . Cutoff value of the FIB-4 index was set at 3.25 according to the previously established value for the prediction of advanced fibrosis [17]. Change in the FIB-4 index per year ( $\Delta\text{FIB-4 index/year}$ ) in the paired biopsy group was calculated by the following formula:  $\Delta\text{FIB-4 index/year} = (\text{the FIB-4 index at the second liver biopsy} - \text{the FIB-4 index at the first liver biopsy}) / \text{the interval between paired biopsies (years)}$ .  $\Delta\text{FIB-4 index/year}$  in the validation group was calculated similarly between the liver biopsy and 1, 2, and 3 years after the end of interferon therapy. Change in AST, ALT, platelets per year ( $\Delta\text{AST/year}$ ,  $\Delta\text{ALT/year}$ ,  $\Delta\text{Platelets/year}$ ) were calculated similarly.

#### Statistical analysis

Categorical data were compared using the Chi-square and Fisher's exact test. Distributions of continuous variables were analyzed using the Student's *t* test or the Mann-Whitney *U* test. A *p* value of  $<0.05$  was considered statistically significant. The cumulative incidence curve was determined by the Kaplan-Meier method and differences among groups were assessed using a log-rank test. Receiver operating characteristic (ROC) curves were constructed, and the area under the ROC curve (AUROC) was calculated. Optimal cut-off values were selected using Youden's index. Factors associated with HCC risk were determined by the Cox proportional hazard model. Statistical analyses were performed using the Statistical Package for the Social Sciences software version 15.0 (SPSS Inc., Chicago, IL, USA)

#### Results

##### Patient characteristics

Table 1 shows the characteristics of patients in the paired biopsy group and validation group. There were no significant differences in the FIB-4 index between the two groups. Mean follow-up periods were 6.4 years in the paired biopsy group and 5.9 years in the validation group, respectively. HCC developed in 30 patients (14 %) in the

**Table 1** Patient characteristics

	Paired biopsy group		Validation group	<i>p</i> value*	<i>p</i> value**
	First biopsy	Second biopsy			
Patients ( <i>n</i> )	171		875		
Age (SD) (years)	56.1 (8.5)	60.8 (8.1)	58.0 (10.3)	0.02	<0.001
Gender [ <i>n</i> (%)]					
Female	95 (56)		493 (56)		
Male	76 (44)		382 (44)	0.85	
Fibrosis stage [ <i>n</i> (%)]					
F0-1	67 (39)	57 (33)	388 (44)		
F2	57 (34)	60 (35)	269 (31)		
F3	43 (25)	43 (25)	186 (21)		
F4	4 (2)	11 (7)	32 (4)	0.41	0.04
AST (SD) (IU/L)	68.3 (38.2)	60.3 (38.7)	62.9 (35.4)	0.08	0.51
ALT (SD) (IU/L)	90.8 (63.2)	68.3 (54.0)	77.9 (52.7)	0.008	0.06
Platelets (SD) (10 <sup>9</sup> /L)	159 (48)	153 (51)	157 (50)	0.71	0.28
FIB-4 index	2.90 (1.6)	3.38 (1.9)	3.20 (2.1)	0.08	0.28
Interferon response (relapse/no response/ND)		71/100	335/366/174		0.15
HCC development [ <i>n</i> (%)]		30 (14)	89 (10)		0.01
Follow-up period (SD) (years)		6.4 (2.7)	5.9 (2.8)		0.04

AST aspartate aminotransferase, ALT alanine aminotransferase, ND not determined

\* Comparison between paired biopsy group at first biopsy and validation group

\*\* Comparison between paired biopsy group at second biopsy and validation group

paired biopsy group and 89 patients (10 %) in the validation group during the follow-up.

Prediction of HCC development by a single-point assessment in the paired biopsy group

The incidence of HCC development was compared between patients with F0–2 and F3–4 at the second liver biopsy. The 3-year, 5-year, and 7-year cumulative incidence of HCC was 13.3, 26.6, and 39.4 %, respectively, in patients with F3–4, which was significantly higher than those with F0–2 (1.7, 4.9, and 7.3 %, respectively;  $p < 0.001$ , Fig. 1a). Similarly, using the FIB-4 index at the second biopsy, the 3-year, 5-year, and 7-year cumulative incidence of HCC after interferon therapy was 1.0, 5.5 and 6.9 %, respectively, in patients with a FIB-4 index  $\leq 3.25$ , whereas it was 11.9, 20.9, and 32.0 %, respectively, in those with a FIB-4 index  $> 3.25$  ( $p < 0.001$ , Fig. 1b):

Prediction of HCC development by time-course changes in FIB-4 index in the paired biopsy group

HCC development was compared with time-course changes in the fibrosis stage from repeated liver biopsies. For this analysis, 4 patients who were diagnosed as having cirrhosis at the first liver biopsy were excluded. The cumulative incidence of HCC was not significantly different between patients with fibrosis progression and those without (Fig. 1c). In contrast, when time-course changes in the FIB-4 index ( $\Delta$ FIB-4/year) were considered, HCC developed more frequently in patients with large time-course changes in the FIB-4 index. Of 30 patients with HCC development, 28 patients developed HCC within 10 years. The AUROC of the  $\Delta$ FIB-4 index/year for prediction of HCC development within 10 years was 0.61. Using a cut-off value for a  $\Delta$ FIB-4/year of 0.3, the sensitivity and specificity for the prediction of HCC

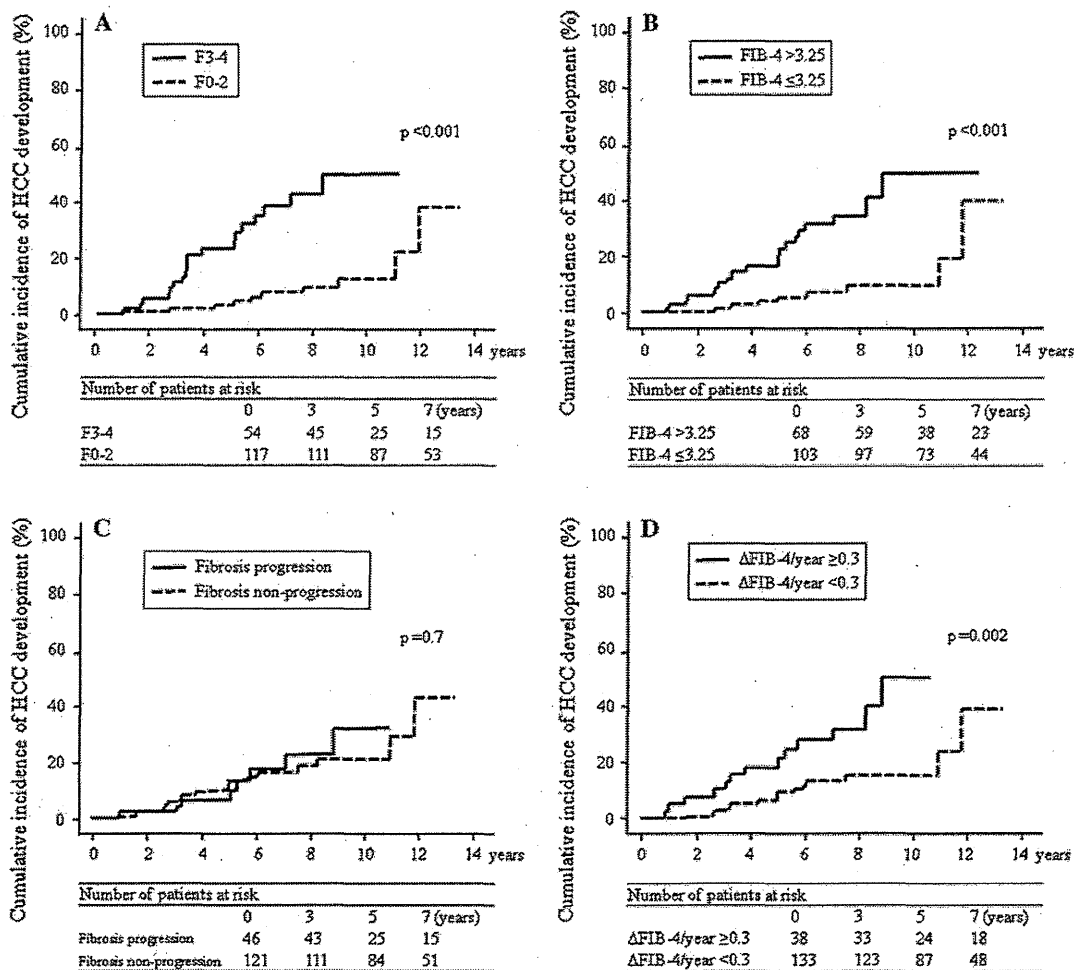


Fig. 1 Cumulative incidence of HCC development in the paired biopsy group. Patients were categorized into two groups according to a fibrosis stage, b FIB-4 index, c time-course change in fibrosis stage, and d time-course change in the FIB-4 index ( $\Delta$ FIB-4/year)

development was 46 and 82 %, and the 3-year, 5-year and 7-year cumulative incidence of HCC was 13.2, 21.9, and 28.4 %, respectively, in patients with a  $\Delta$ FIB-4/year  $\geq 0.3$ , whereas it was 3.1, 9.6, and 13.1 % in those with a  $\Delta$ FIB-4/year  $< 0.3$  ( $p = 0.002$ , Fig. 1d).

#### Validation by independent patients

The cumulative HCC incidence rate was similarly examined in the validation group using the FIB-4 index at the time of biopsy. In the group with a FIB-4 index  $> 3.25$ , the 3-year, 5-year, and 7-year cumulative incidences of HCC were 3.9, 11.2, and 22.0 %, respectively, whereas, in the group with a FIB-4 index  $\leq 3.25$ , the 3-year, 5-year, and 7-year cumulative incidences of HCC were 0.6, 4.0, and 6.4 %, respectively. The rate was significantly higher ( $p < 0.001$ ) in the group with a FIB-4 index  $> 3.25$ .

Time-course changes in the FIB-4 index and HCC incidence were examined with the cut-off value of a  $\Delta$ FIB-4/year at 0.3. Cumulative incidence of HCC development was examined using the  $\Delta$ FIB-4/year calculated by using data at 1 year after the interferon therapy. The 3-year, 5-year, and 7-year cumulative incidences of HCC were 2.8, 15.0, and 20.1 %, respectively, in patients with a  $\Delta$ FIB-4/year  $\geq 0.3$ , whereas they were 1.4, 4.3, and 9.8 % in patients with a  $\Delta$ FIB-4/year  $< 0.3$ . The cumulative incidence rate was significantly higher ( $p = 0.008$ ) in the group with a  $\Delta$ FIB-4/year  $\geq 0.3$ . Similarly, using the  $\Delta$ FIB-4/year calculated by using data at 2 years after the interferon therapy, the 3-year, 5-year, and 7-year cumulative incidences of HCC were 3.3, 11.1, and 16.9 %, respectively, in patients with a  $\Delta$ FIB-4/year  $\geq 0.3$ , whereas they were 1.4, 5.3, and 10.7 % in patients with a  $\Delta$ FIB-4/year  $< 0.3$  ( $p = 0.04$ ). Using the  $\Delta$ FIB-4/year calculated by using data at 3 years after the interferon therapy, the 3-year, 5-year, and 7-year cumulative incidences of HCC were 4.4, 9.7, and 17.1 %, respectively, in patients with a  $\Delta$ FIB-4/year  $\geq 0.3$ , whereas they were 1.4, 5.0 and 10.4 % in patients with a  $\Delta$ FIB-4/year  $< 0.3$  ( $p = 0.005$ ). Because similar results were obtained by the  $\Delta$ FIB-4/year at 1, 2, and 3 years after the interferon therapy, the  $\Delta$ FIB-4/year calculated by using data at 1 year after the interferon therapy was used for subsequent analysis.

#### Factors associated with HCC development

Univariate analysis demonstrated factors that increase the hazard ratio (HR) for the development of HCC (Table 2). In the paired biopsy group for advanced liver fibrosis detected by liver biopsy, a high FIB-4 index level, and a  $\Delta$ FIB-4/year  $\geq 0.3$  were risk factors for HCC development. Compared with patients with a FIB-4 index  $\leq 3.25$ , the HR

of those with a FIB-4 index  $> 3.25$  was 4.8 [95 % confidence interval (CI) 2.0–10.7,  $p < 0.001$ ]. In terms of change in fibrosis stage, there was no significant difference between the progression and non-progression groups. In contrast, in terms of change in the FIB-4 index, compared with patients with a  $\Delta$ FIB-4/year  $< 0.3$ , the HR of those with a  $\Delta$ FIB-4/year  $\geq 0.3$  was 3.1 (95 % CI 1.3–5.7,  $p = 0.002$ ). Similar results were obtained in the validation group; a FIB-4 index  $> 3.25$  and a  $\Delta$ FIB-4/year  $\geq 0.3$  were risk factors for HCC development (Table 2). These two groups of patients were combined and univariate and multivariate analysis were performed (Table 3). Because AST, ALT, platelets and age are contained in the FIB-4 index, these factors were excluded in the multivariate analysis. Multivariate analysis revealed that gender, fibrosis stage, the FIB-4 index and  $\Delta$ FIB-4/year were independent factors associated with HCC development. The HR of HCC development with a FIB-4 index  $> 3.25$  and a  $\Delta$ FIB-4/year  $\geq 0.3$  was 2.7 (95 % CI 1.7–4.2,  $p < 0.001$ ) and 1.8 (95 % CI 1.2–2.6,  $p = 0.003$ ), respectively.  $\Delta$ AST/year,  $\Delta$ ALT/year, and  $\Delta$ Platelets/year were not associated with HCC development.

#### Evaluation of HCC risk by a combining the FIB-4 index and $\Delta$ FIB-4/year in the whole group

Multivariate analysis demonstrated that a high FIB-4 index level by single-point assessment and a time-course increase in the FIB-4 index were independent risk factors for HCC development. Their combined risk was examined in four groups, with the cut-off values of a FIB-4 index at 3.25 and a  $\Delta$ FIB-4/year at 0.3. Patients with a FIB-4 index  $\leq 3.25$  and a  $\Delta$ FIB-4/year  $< 0.3$  were defined as the low risk group. Patients with a FIB-4 index  $\leq 3.25$  and a  $\Delta$ FIB-4/year  $\geq 0.3$  were defined as the intermediate risk-1 group. Similarly, patients with a FIB-4 index  $> 3.25$  and a  $\Delta$ FIB-4/year  $\geq 0.3$  were defined as the high risk group. Patients with a FIB-4 index  $> 3.25$  and a  $\Delta$ FIB-4/year  $< 0.3$  were defined as the intermediate risk-2 group. The 3-year, 5-year, and 7-year cumulative incidence of HCC in patients within the high risk group was 7.6, 21.0, and 30.0 %. Similarly, the 3-year, 5-year, and 7-year cumulative incidence of HCC was 4.1, 9.6, and 21.1 % in patients within the intermediate risk-2 group. It was 0.8, 10.1, and 13.8 % in the patients within the intermediate risk-1 group and 0.6, 2.9, and 4.8 % in patients within the low risk group ( $p < 0.001$ , Fig. 2). The HR of HCC development in patients at high risk was 7.3 (95 % CI 4.3–12.5,  $p < 0.001$ , Table 4). Sensitivity of prediction for HCC development by the liver biopsy and the FIB-4 index was 58 and 61 %, respectively. The combined risk classification by the FIB-4 index and the  $\Delta$ FIB-4/year had higher sensitivity (72 %, Table 5).

**Table 2** Factors associated with HCC development in the paired biopsy group and the validation group

Risk factor value	Paired biopsy group		Validation group	
	Hazard ratio (95 % CI)	<i>p</i> value	Hazard ratio (95 % CI)	<i>p</i> value
Risk factor at baseline <sup>a</sup>				
Age (by every 10 years)	1.3 (0.8–2.1)	0.3	1.9 (1.5–2.5)	<0.001
Gender				
Female	1		1	
Male	1.5 (0.7–3.2)	0.2	1.5 (0.9–2.2)	0.06
Fibrosis stage				
F0/F1/F2	1		1	
F3/F4	5.4 (2.5–11.3)	<0.001	4.7 (3.1–7.1)	<0.001
AST (by every 1× ULN)	1.3 (1.1–1.5)	0.01	1.4 (1.1–1.7)	<0.001
ALT (by every 1× ULN)	1.1 (1.0–1.3)	0.04	1.1 (0.9–1.2)	0.1
Platelets (10 <sup>9</sup> /L)				
≥150	1		1	
<150	3.0 (1.3–6.5)	0.006	2.6 (1.6–4.5)	<0.001
FIB-4 index				
≤3.25	1		1	
>3.25	4.8 (2.2–10.7)	<0.001	3.8 (2.4–5.8)	<0.001
Change of risk factor				
ΔAST/year (IU/L)				
<0	1		1	
≥0	0.9 (0.4–1.9)	0.8	1.4 (0.8–2.4)	0.2
ΔALT/year (IU/L)				
<0	1		1	
≥0	0.8 (0.4–1.8)	0.6	0.8 (0.4–1.6)	0.6
ΔPlatelets/year (10 <sup>9</sup> /L)				
>–0.5	1		1	
≤–0.5	2.4 (1.1–5.0)	0.01	0.7 (0.4–1.3)	0.3
ΔFIB-4/year				
<0.3	1		1	
≥0.3	3.1 (1.5–6.6)	0.002	1.8 (1.2–2.9)	0.008
Fibrosis stage change				
Non-progression	1			
Progression	1.2 (0.5–2.7)	0.7		

AST aspartate aminotransferase,  
ALT alanine aminotransferase

<sup>a</sup> Data at the second biopsy was used for the paired biopsy group

## Discussion

Recently, non-invasive methods substituting liver biopsy for the diagnoses of liver fibrosis have been developed. It has been elucidated that non-invasive liver fibrosis markers are related to HCC development and mortality [23–25]. In addition, it was reported that after interferon therapy for chronic hepatitis C, some non-invasive liver fibrosis markers correlated with HCC development [26]. However, it remains unclear whether time-course changes in these markers correlate with HCC development and mortality.

Previously, we reported that time-course changes in the FIB-4 index correlated with liver fibrosis progression [20]. Because the FIB-4 index correlates with liver fibrosis, a risk factor for HCC development, and it considers age,

another risk factor, it was presumed that the index could be closely correlated with HCC development. In this study, the significance of the FIB-4 index and time-course changes in the FIB-4 index were investigated in relation to HCC development.

The most important finding in this study was that it was possible to predict HCC development by time-course changes in the FIB-4 index. The cumulative HCC incidence rate was lower in patients with a ΔFIB-4/year <0.3 compared with those with a ΔFIB-4/year ≥0.3. It has been reported that a high level of AST and ALT levels correlate with progression of liver fibrosis, and improved levels prevent HCC development [27–29]. It is also known that liver fibrosis progression and the risk of HCC development is increased with a decrease in platelet count [30].

**Table 3** Factors associated with HCC development in the combined population

Risk factor value	Univariate		Multivariate	
	Hazard ratio (95 % CI)	<i>p</i> value	Hazard ratio (95 % CI)	<i>p</i> value
Risk factor at baseline				
Age (by every 10 years)	1.8 (1.4–2.3)	<0.001		
Gender				
Female	1		1	
Male	1.5 (1.0–2.1)	0.03	2.0 (1.4–2.9)	<0.001
Fibrosis stage				
F0/F1/F2	1		1	
F3/F4	4.9 (3.5–7.2)	<0.001	3.0 (2.0–4.6)	<0.001
AST (by every 1× ULN)	1.4 (1.2–1.6)	<0.001		
ALT (by every 1× ULN)	1.1 (1.0–1.2)	0.04		
Platelets (10 <sup>9</sup> /L)				
≥150	1			
<150	2.7 (1.7–4.1)	<0.001		
FIB-4 index				
≤3.25	1		1	
>3.25	4.0 (2.8–5.9)	<0.001	2.7 (1.7–4.2)	<0.001
Change of risk factor				
ΔAST/year (IU/L)				
<0	1			
≥0	1.3 (0.8–2.1)	0.2		
ΔALT/year (IU/L)				
<0	1			
≥0	0.9 (0.6–1.6)	0.8		
ΔPlatelets/year (10 <sup>9</sup> /L)				
>–0.5	1			
≤–0.5	1.0 (0.6–1.6)	0.8		
ΔFIB-4/year				
<0.3	1		1	
≥0.3	2.1 (1.4–3.1)	<0.001	1.8 (1.2–2.6)	0.003

AST aspartate aminotransferase,  
ALT alanine aminotransferase

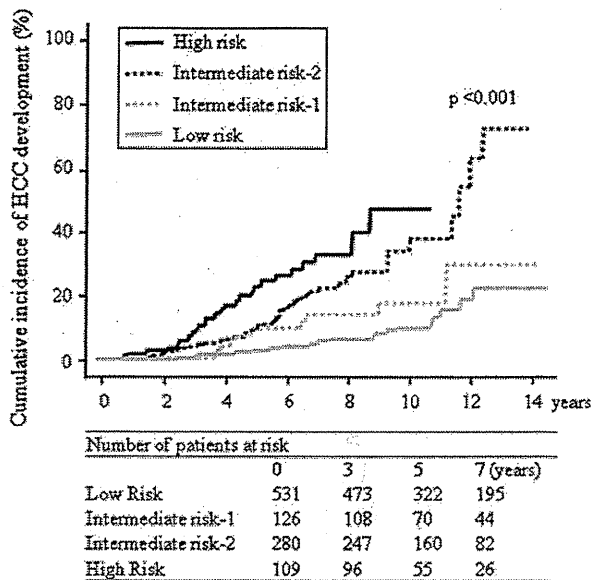
However, time-course changes of AST, ALT, and platelet count were not significantly associated with HCC development in this study. On the other hand, the FIB-4 index, which considers these factors together; had its time-course changes useful for real-time monitoring of disease progression. As the disease advances, the FIB-4 index deteriorates and the risk of HCC development increases.

One advantage of the FIB-4 index is the feasibility of repeated measurements for evaluating disease status. Needless to say, liver biopsy is the gold standard for diagnosis of liver fibrosis and is still important to predict the progression of liver disease. However, there are problems associated with liver biopsies including sampling errors and inter-observer variations [6, 7]. In addition, it is difficult to repeat biopsies, making it challenging to evaluate time-course changes because of the invasiveness of the procedure. In contrast, the FIB-4 index can be calculated using age and general biochemistry results and making it markedly easy to follow up time-course changes.

In this study, changes in fibrosis stage between two liver biopsies failed to stratify HCC development. These results suggest that the FIB-4 index, rather than the liver biopsy, was more useful for real-time monitoring of disease advancement.

Correlations of non-invasive liver fibrosis markers including the FIB-4 index with HCC incidence risk have been reported previously [23–26, 31]. A similar result was shown in this study using a single-point assessment of the FIB-4 index. Since the FIB-4 index correlates with liver fibrosis, a high FIB-4 index indicates a high risk for HCC development similar to other liver fibrosis markers. Furthermore, an important fact in this study was that combining the FIB-4 index and time-course changes in the FIB-4 index could stratify patients with high risk of HCC development. A high FIB-4 index level by single-point assessment and a time-course increase in the FIB-4 index were independent risk factors for HCC development. Patients with a low baseline FIB-4 index and a time-course





**Fig. 2** Cumulative incidence of HCC development in the combined population. Patients were categorized into four groups using the FIB-4 index and time-course change in the FIB-4 index ( $\Delta$ FIB-4/year). Low risk: FIB-4 index  $\leq 3.25$  and  $\Delta$ FIB-4/year  $< 0.3$ , intermediate risk-1: FIB-4 index  $\leq 3.25$  and  $\Delta$ FIB-4/year  $\geq 0.3$ , intermediate risk-2: FIB-4 index  $> 3.25$  and  $\Delta$ FIB-4/year  $< 0.3$ , high risk: FIB-4 index  $> 3.25$  and  $\Delta$ FIB-4/year  $\geq 0.3$

**Table 4** Evaluation of HCC risk by combining the FIB-4 and the  $\Delta$ FIB-4/year

	Number of patients	Hazard ratio (95 % CI)	<i>p</i> value
Low risk	531	1	
Intermediate risk-1	126	2.1 (1.1–4.0)	0.03
Intermediate risk-2	280	4.1 (2.6–6.5)	$< 0.001$
High risk	109	7.3 (4.3–12.5)	$< 0.001$

Low risk: patients with a FIB-4 index  $\leq 3.25$  and a  $\Delta$ FIB-4/year  $< 0.3$

Intermediate risk-1: patients with a FIB-4 index  $\leq 3.25$  and a  $\Delta$ FIB-4/year  $\geq 0.3$

Intermediate risk-2: patients with a FIB-4 index  $> 3.25$  and a  $\Delta$ FIB-4/year  $< 0.3$

High risk: patients with a FIB-4 index  $> 3.25$  and a  $\Delta$ FIB-4/year  $\geq 0.3$

improvement in the FIB-4 index had a low risk of HCC development, whereas those with a high baseline FIB-4 index and worsening of the FIB-4 index had a markedly high risk for HCC development. In addition to the utility of predicting liver fibrosis and HCC development by single-point assessment, the combination with real-time monitoring enables stratification of a group with a high risk of HCC development, which is a great advantage of the FIB-4 index over a liver biopsy.

With regard to diagnosis capabilities for liver fibrosis, it has been reported that other non-invasive liver fibrosis

**Table 5** Sensitivity of prediction for HCC development

	Patients with HCC development	Patients without HCC development
F0–2	50	724
F3–4	69	203
	Sensitivity: 58 %	Specificity: 78 %
FIB-4 index $\leq 3.25$	42	615
FIB-4 index $> 3.25$	77	312
	Sensitivity: 61 %	Specificity: 66 %
Low risk	29	502
Other risk	90	425
	Sensitivity: 72 %	Specificity: 54 %

Other risk: high risk, intermediate risk-2, and intermediate risk-1

markers have higher diagnostic capabilities than the FIB-4 index [32, 33]. However, the FIB-4 index has several advantages. Although, it has been reported that transient elastography has high diagnostic capabilities when it comes to liver fibrosis, measurements are sometimes impossible in patients with severe obesity [34]. Reproducibility of transient elastography was reportedly reduced in patients with steatosis, increased body mass index, and lower degrees of liver fibrosis [35]. Moreover, these modalities for measurement of elasticity of the liver using ultrasonography are not widely available, especially in countries where resources are limited. In contrast, the FIB-4 index can be determined by a general blood test, and it can be measured in almost all patients. The parameters required for calculation are only age, AST, ALT, and platelet count, which are measured during the routine examination of patients with liver disease. Therefore, additional blood collection is unnecessary, and the index can be calculated at no extra cost.

In conclusion, it was possible to define a group with a high risk of HCC development by calculating the FIB-4 index and considering time-course changes in the FIB-4 index. Because measurement of the FIB-4 index is simple and easy to repeat, it is useful for non-invasive, real-time monitoring of HCC development.

**Acknowledgments** This study was supported by a Grant-in-Aid from Ministry of Health, Labor and Welfare, Japan.

**Conflict of interest** The authors declare that they have no conflict of interest.

## References

- Lauer GM, Walker BD. Hepatitis C virus infection. *N Engl J Med.* 2001;345(1):41–52.

2. Yano M, Kumada H, Kage M, Ikeda K, Shimamatsu K, Inoue O, et al. The long-term pathological evolution of chronic hepatitis C. *Hepatology*. 1996;23(6):1334–40.
3. Lok AS, McMahon BJ. Chronic hepatitis B. *Hepatology*. 2007;45(2):507–39.
4. Dienstag JL. The role of liver biopsy in chronic hepatitis C. *Hepatology*. 2002;36(5 Suppl 1):S152–60.
5. Namiki I, Nishiguchi S, Hino K, Suzuki F, Kumada H, Itoh Y, et al. Management of hepatitis C; Report of the Consensus Meeting at the 45th Annual Meeting of the Japan Society of Hepatology (2009). *Hepatol Res*. 2010;40(4):347–68.
6. Intraobserver and interobserver variations in liver biopsy interpretation in patients with chronic hepatitis C. The French METAVIR Cooperative Study Group. *Hepatology*. 1994;20(1 Pt 1):15–20.
7. Regev A, Berho M, Jeffers LJ, Milikowski C, Molina EG, Pyrsopoulos NT, et al. Sampling error and intraobserver variation in liver biopsy in patients with chronic HCV infection. *Am J Gastroenterol*. 2002;97(10):2614–8.
8. Castera L, Negre I, Samii K, Buffet C. Pain experienced during percutaneous liver biopsy. *Hepatology*. 1999;30(6):1529–30.
9. Ziol M, Handra-Luca A, Kettaneh A, Christidis C, Mal F, Kazemi F, et al. Noninvasive assessment of liver fibrosis by measurement of stiffness in patients with chronic hepatitis C. *Hepatology*. 2005;41(1):48–54.
10. Castera L, Vergniol J, Foucher J, Le Bail B, Chanteloup E, Haaser M, et al. Prospective comparison of transient elastography, Fibrotest, APRI, and liver biopsy for the assessment of fibrosis in chronic hepatitis C. *Gastroenterology*. 2005;128(2):343–50.
11. Friedrich-Rust M, Nierhoff J, Lupsor M, Sporea I, Fierbinteanu-Braticevici C, Strobel D, et al. Performance of acoustic radiation force impulse imaging for the staging of liver fibrosis: a pooled meta-analysis. *J Viral Hepat*. 2012;19(2):e212–9.
12. Tamaki N, Kurosaki M, Matsuda S, Nakata T, Muraoka M, Suzuki Y, et al. Prospective comparison of real-time tissue elastography and serum fibrosis markers for the estimation of liver fibrosis in chronic hepatitis C patients. *Hepatol Res*. 2013;6(10):12179.
13. Williams AL, Hoofnagle JH. Ratio of serum aspartate to alanine aminotransferase in chronic hepatitis. Relationship to cirrhosis. *Gastroenterology*. 1988;95(3):734–9.
14. Wai CT, Greenson JK, Fontana RJ, Kalbfleisch JD, Marrero JA, Conjeevaram HS, et al. A simple noninvasive index can predict both significant fibrosis and cirrhosis in patients with chronic hepatitis C. *Hepatology*. 2003;38(2):518–26.
15. Forns X, Ampurdanes S, Llovet JM, Aponte J, Quinto L, Martínez-Bauer E, et al. Identification of chronic hepatitis C patients without hepatic fibrosis by a simple predictive model. *Hepatology*. 2002;36(4 Pt 1):986–92.
16. Imbert-Bismut F, Ratziu V, Pironi L, Charlotte F, Benhamou Y, Poinard T. Biochemical markers of liver fibrosis in patients with hepatitis C virus infection: a prospective study. *Lancet*. 2001;357(9262):1069–75.
17. Sterling RK, Lissen E, Clumeck N, Sola R, Correa MC, Montaner J, et al. Development of a simple noninvasive index to predict significant fibrosis in patients with HIV/HCV coinfection. *Hepatology*. 2006;43(6):1317–25.
18. Vallet-Pichard A, Mallet V, Nalpas B, Verkarre V, Nalpas A, Dhalluin-Venier V, et al. FIB-4: an inexpensive and accurate marker of fibrosis in HCV infection. Comparison with liver biopsy and fibrotest. *Hepatology*. 2007;46(1):32–6.
19. Holmberg SD, Lu M, Rupp LB, Lamerato LE, Moorman AC, Vijayadeva V, et al. Noninvasive serum fibrosis markers for screening and staging chronic hepatitis C virus patients in a large US cohort. *Clin Infect Dis*. 2013;57(2):240–6.
20. Tamaki N, Kurosaki M, Tanaka K, Suzuki Y, Hoshioka Y, Kato T, et al. Noninvasive estimation of fibrosis progression overtime using the FIB-4 index in chronic hepatitis C. *J Viral Hepat*. 2013;20(1):72–6.
21. Asahina Y, Tsuchiya-K, Tamaki N, Hirayama I, Tanaka T, Sato M, et al. Effect of aging on risk for hepatocellular carcinoma in chronic hepatitis C virus infection. *Hepatology*. 2010;52(2):518–27.
22. Bedossa P, Poinard T. An algorithm for the grading of activity in chronic hepatitis C. The METAVIR Cooperative Study Group. *Hepatology*. 1996;24(2):289–93.
23. Masuzaki R, Tateishi R, Yoshida H, Goto E, Sato T, Ohki T, et al. Prospective risk assessment for hepatocellular carcinoma development in patients with chronic hepatitis C by transient elastography. *Hepatology*. 2009;49(6):1954–61.
24. Vergniol J, Foucher J, Terreboune E, Bernard PH, le Bail B, Merrouche W, et al. Noninvasive tests for fibrosis and liver stiffness predict 5-year outcomes of patients with chronic hepatitis C. *Gastroenterology*. 2011;140(7):1970–9, 1979.e1–3.
25. Nunes D, Fleming C, Offner G, Craven D, Fix O, Heeren T, et al. Noninvasive markers of liver fibrosis are highly predictive of liver-related death in a cohort of HCV-infected individuals with and without HIV infection. *Am J Gastroenterol*. 2010;105(6):1346–53.
26. Yu ML, Lin SM, Lee CM, Dai CY, Chang WY, Chen SC, et al. A simple noninvasive index for predicting long-term outcome of chronic hepatitis C after interferon-based therapy. *Hepatology*. 2006;44(5):1086–97.
27. Kurosaki M, Matsunaga K, Hirayama I, Tanaka T, Sato M, Komatsu N, et al. The presence of steatosis and elevation of alanine aminotransferase levels are associated with fibrosis progression in chronic hepatitis C with non-response to interferon therapy. *J Hepatol*. 2008;48(5):736–42.
28. Kumada T, Toyoda H, Kiriya S, Sone Y, Tanikawa M, Hisanaga Y, et al. Incidence of hepatocellular carcinoma in hepatitis C carriers with normal alanine aminotransferase levels. *J Hepatol*. 2009;50(4):729–35.
29. Izumi N, Asahina Y, Kurosaki M, Yamada G, Kawai T, Kajiwara E, et al. Inhibition of hepatocellular carcinoma by PegIFNalpha-2a in patients with chronic hepatitis C: a nationwide multicenter cooperative study. *J Gastroenterol*. 2012;9:9.
30. Nagamine T, Ohtuka T, Takehara K, Arai T, Takagi H, Mori M. Thrombocytopenia associated with hepatitis C viral infection. *J Hepatol*. 1996;24(2):135–40.
31. Park LS, Tate JP, Justice AC, Lo Re V 3rd, Lim JK, Brau N, et al. FIB-4 index is associated with hepatocellular carcinoma risk in HIV-infected patients. *Cancer Epidemiol Biomarkers Prev*. 2011;20(12):2512–7.
32. Zarski JP, Sturm N, Guechot J, Paris A, Zafrani ES, Asselah T, et al. Comparison of nine blood tests and transient elastography for liver fibrosis in chronic hepatitis C: the ANRS HCEP-23 study. *J Hepatol*. 2012;56(1):55–62.
33. Poinard T, Ngo Y, Perazzo H, Munteanu M, Lebray P, Moussalli J, et al. Prognostic value of liver fibrosis biomarkers: a meta-analysis. *Gastroenterol Hepatol (N Y)*. 2011;7(7):445–54.
34. Castera L, Foucher J, Bernard PH, Carvalho F, Allaix D, Merrouche W, et al. Pitfalls of liver stiffness measurement: a 5-year prospective study of 13,369 examinations. *Hepatology*. 2010;51(3):828–35.
35. Fraquelli M, Rigamonti C, Casazza G, Conte D, Donato MF, Ronchi G, et al. Reproducibility of transient elastography in the evaluation of liver fibrosis in patients with chronic liver disease. *Gut*. 2007;56(7):968–73.

□ ORIGINAL ARTICLE □

## Clinical Characteristics of Patients who Developed Hepatocellular Carcinoma after Hepatitis C Virus Eradication with Interferon Therapy: Current Status in Japan

Akira Sato<sup>1</sup>, Michio Sata<sup>2</sup>, Kenji Ikeda<sup>3</sup>, Takashi Kumada<sup>4</sup>, Namiki Izumi<sup>5</sup>, Yasuhiro Asahina<sup>5</sup>, Yukio Osaki<sup>6</sup>, Kazuaki Chayama<sup>7</sup>, Shuichi Kaneko<sup>8</sup>, Akito Sakai<sup>8</sup>, Morikazu Onji<sup>9</sup>, Yoichi Hiasa<sup>9</sup>, Takumi Omura<sup>10</sup>, Itaru Ozeki<sup>10</sup>, Osamu Yokosuka<sup>11</sup>, Shuichiro Shiina<sup>12</sup>, Mariko Itsubo<sup>13</sup>, Shuhei Nishiguchi<sup>14</sup>, Katsuharu Hirano<sup>15</sup>, Tatsuya Ide<sup>2</sup>, Shotaro Sakisaka<sup>16</sup>, Takahiro Yamasaki<sup>17</sup>, Isao Hidaka<sup>17</sup>, Masatoshi Tanaka<sup>18</sup>, Soo Ryang Kim<sup>19</sup> and Takafumi Ichida<sup>15</sup>

### Abstract

**Objective** We attempted to elucidate the clinical features of chronic hepatitis C patients who develop hepatocellular carcinoma (HCC) after achieving a sustained viral response (SVR) to interferon (IFN) therapy.

**Methods** The clinical features of 130 patients at 19 hospitals who developed HCC after obtaining an SVR were retrospectively reviewed.

**Results** Overall, 107 (82%) of the 130 patients were men, with 92 (71%) being  $\geq 60$  years of age and 76, 38 and 16 developing HCC within 5, 5-10 and 10-16.9 years after IFN therapy, respectively. Before receiving IFN therapy, 92 (71%) patients had cirrhosis and/or a low platelet count ( $< 15 \times 10^4$  cells/ $\mu$ L). Lower albumin ( $< 3.9$  g/dL) and higher alpha fetoprotein (AFP) ( $\geq 10$  ng/mL) levels were identified in a multivariate analysis to be independent variables of the development of HCC within five years after IFN therapy. Among 4,542 SVR patients, HCC occurred in 109 (2.4%) during a 5.5-year follow-up period, thus resulting in an occurrence rate of 4.6% for men and 0.6% for women.

**Conclusion** SVR patients with lower albumin or higher AFP levels require careful assessments to prevent early HCC development after IFN therapy. HCC occurrence within  $> 10$  years of IFN therapy is not uncommon, and the risk factors remain uncertain, thus suggesting that all SVR patients should undergo long-term follow-up examinations for HCC development.

**Key words:** hepatocellular carcinoma, hepatitis C virus, interferon, sustained viral response

(Intern Med 52: 2701-2706, 2013)

(DOI: 10.2169/internalmedicine.52.1180)

<sup>1</sup>Department of Gastroenterology, St. Marianna University School of Medicine, Yokohama Seibu Hospital, Japan, <sup>2</sup>Division of Gastroenterology, Department of Medicine, Kurume University School of Medicine, Japan, <sup>3</sup>Department of Hepatology, Toranomon Hospital, Japan, <sup>4</sup>Department of Gastroenterology, Ogaki Municipal Hospital, Japan, <sup>5</sup>Department of Gastroenterology and Hepatology, Musashino Red Cross Hospital, Japan, <sup>6</sup>Department of Gastroenterology and Hepatology, Osaka Red Cross Hospital, Japan, <sup>7</sup>Department of Medical and Molecular Science, Division of Frontier Medical Science, Programs for Biomedical Research, Graduate School of Biomedical Science, Hiroshima University, Japan, <sup>8</sup>Department of Gastroenterology, Graduate School of Medicine, Kanazawa University, Japan, <sup>9</sup>Department of Gastroenterology and Metabolism, Ehime University Graduate School of Medicine, Japan, <sup>10</sup>Department of Gastroenterology, Sapporo Kosei General Hospital, Japan, <sup>11</sup>Department of Medicine and Clinical Oncology, Graduate School of Medicine, Chiba University, Japan, <sup>12</sup>Department of Gastroenterology, Graduate School of Medicine, The University of Tokyo, Japan, <sup>13</sup>Department of Gastroenterology and Hepatology, Jikei University School of Medicine, Japan, <sup>14</sup>Division of Hepatobiliary and Pancreatic Disease, Department of Internal Medicine, Hyogo College of Medicine, Japan, <sup>15</sup>Department of Hepatology and Gastroenterology, Juntendo Shizuoka Hospital, Japan, <sup>16</sup>Department of Gastroenterology and Medicine, Fukuoka University Faculty of Medicine, Japan, <sup>17</sup>Department of Gastroenterology and Hepatology, Yamaguchi University Graduate School of Medicine, Japan, <sup>18</sup>Department of Gastroenterology, Kurume University Medical Center, Japan and <sup>19</sup>Department of Gastroenterology, Kobe Asahi Hospital, Japan

Received for publication June 16, 2013; Accepted for publication July 15, 2013

Correspondence to Dr. Akira Sato, asato@marianna-u.ac.jp

---

## Introduction

---

Chronic hepatitis C virus (HCV) infection is a common cause of chronic liver disease and hepatocellular carcinoma (HCC) worldwide (1). In Japan, HCC is the third leading cause of cancer-related death, with more than 30,000 deaths occurring in 2010 (2), approximately 70% of which were associated with HCV infection (3). In chronic HCV patients, the risk of HCC has been shown to increase in association with the degree of liver fibrosis, with an annualized rate of HCC developing within a 2-8% cirrhotic background (4-7). It has been reported that interferon (IFN) therapy not only improves hepatic inflammation and fibrosis, but also reduces the incidence of HCC, particularly in patients who achieve a sustained viral response (SVR) (4, 8-10). However, HCC sometimes develops in patients with an SVR, and cases of patients who have developed HCC more than 10 years after completing IFN therapy have been reported (11, 12). The risk factors for HCC in chronic HCV patients are a male sex, older age (13, 14) and the presence of advanced fibrosis (4, 5). Several cohort studies have indicated that these risk factors are also associated with the development of HCC among SVR patients (15-21). However, the number of patients who developed HCC after achieving an SVR in each of these previous studies was limited, and the clinical features of such patients have not been fully clarified. We investigated the clinical features of a large number of patients who developed HCC after undergoing HCV eradication using IFN therapy at a workshop held during the 47th annual meeting of the Liver Cancer Study Group of Japan in July 2011 (President: F. Ichida) on the clinical features of patients who develop HCC after obtaining an SVR in order to compile a more detailed background of such patients.

---

## Materials and Methods

---

### Patients

This study was conducted from February to June 2011 at institutes with which the internal medicine secretaries of the Liver Cancer Study Group of Japan are affiliated. We first investigated the number of SVR patients treated at each institute and, of these, investigated the number of patients who developed HCC after obtaining an SVR. Responses to the initial inquiry were obtained from 25 of 46 hospitals, 22 of which provided the numbers of both SVR and HCC patients. Second, we assessed the characteristics of the patients who developed HCC, and the maximum, minimum and mean follow-up periods of all SVR patients with or without HCC were investigated. Responses were obtained from all 22 hospitals. The characteristics of 144 patients at 22 hospitals were initially reviewed retrospectively; however, three patients who developed HCC before the completion of IFN therapy and 11 patients whose clinical data prior to IFN therapy were unavailable were excluded. Patients positive

for the hepatitis B surface antigen were ineligible for this study. Ultimately, 130 patients treated at 19 hospitals were enrolled. Among these patients, 109 were treated at 13 hospitals that also provided follow-up data of SVR patients with or without HCC. Liver cirrhosis and diabetes mellitus were diagnosed based on the clinical data that we had collected. Obesity was defined as a body mass index of  $\geq 25.0$  kg/m<sup>2</sup> (22). The SVR patients (4,542) with or without HCC followed up at 13 hospitals at 0.5-21.9 years were analyzed to determine the disease incidence rates.

### Statistical analyses

All statistical analyses were performed using the SPSS software package (ver17.0 for Windows; SPSS, Chicago, IL, USA). Clinical differences were evaluated using the chi-square test, and a multivariate analysis was conducted with an ordinal logistic regression analysis using the forced entry method. A p value of  $<0.05$  was considered to be statistically significant.

---

## Results

---

### Patient characteristics at the time of hepatocellular carcinoma occurrence

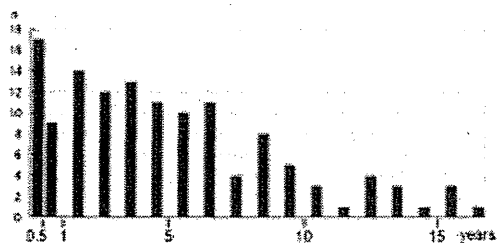
A total of 107 (82%) of the 130 patients were men; 72 (55%) patients developed HCC in their sixties and 34 (26%) developed HCC in their fifties. Ninety-seven patients (75%) had a solitary tumor at the time of HCC occurrence, and 117 (90%) had one or two tumors. The maximum tumor size was within 3 cm in 102 (78%) patients, and 110 (85%) patients underwent radical treatment.

### Period between the completion of IFN therapy and the occurrence of hepatocellular carcinoma

Seventy-six (58%) patients developed HCC within five years of completing IFN therapy and 26 patients developed HCC within one year of completing IFN therapy (Figure). Although the number of patients who developed HCC after  $>5$  years of IFN therapy completion gradually decreased over time (38 patients:  $>5$  and  $\leq 10$  years, 16 patients:  $>10$  years), four patients developed HCC 15 years after completing IFN therapy.

### Patient characteristics at the start of IFN therapy

Sixteen patients had undergone IFN therapy before 50 years of age and 114 (88%) had undergone IFN therapy after 50 years of age (Table 1). Obesity, alcohol intake (more than 80 g/day for five years), diabetes mellitus and cirrhosis were observed in 34 (26%), 38 (29%), 26 (20%) and 46 (35%) patients, respectively. The platelet count was  $<15 \times 10^4$  cells/ $\mu$ L in 88 (68%) patients, the serum albumin level was  $<3.9$  g/dL in 53 (41%) patients and the alpha fetoprotein (AFP) level was  $\geq 10$  ng/mL in 60 (46%) patients. Ninety-two patients (71%) had either cirrhosis or a low platelet count ( $<15 \times 10^4$  cells/ $\mu$ L), and 38 had neither of these fac-



**Figure.** Patient distribution according to the period between the completion of interferon therapy and the occurrence of hepatocellular carcinoma.

**Table 1. Patient Characteristics at the Start of IFN Therapy**

	No. of patients
Age (yr)	
38-49	16
50-59	50
60-69	55
≥70	9
BMI (kg/m <sup>2</sup> ), ≥25/<25	34/86
Alcohol intake (g/day), ≥80/<80	38/90
Diabetes mellitus, present/absent	26/104
Cirrhosis, present/absent	46/83
Platelet count (× 10 <sup>4</sup> per μL), <10 /10- <15 /15- <20 /≥20	26/62/30/9
AST (IU/L), ≥100/<100	43/86
ALT (IU/L), ≥100/<100	54/75
AST/ALT, >1/≤1*	37/72
GGT (IU/L), ≥100/51-99/≤50	41/41/45
Albumin (g/dL), ≤3.5/3.6-3.8/≥3.9	26/27/74
AFP (ng/mL), ≥20/19-10/<10	37/23/49

\* Cases with AST>39 IU/L

BMI: body mass index, AST: aspartate aminotransferase, ALT: alanine aminotransferase, GGT: gamma-glutamyltransferase, AFP: alpha fetoprotein

**Table 2. Univariate Analysis of Risk Factors Associated with the Development of HCC within Three Periods after Eradication of HCV with IFN**

Period since completion of IFN therapy	≤5 years	6-10 years	>10 years	p value
Sex, male/female	58/18	34/4	15/1	0.098
Age at IFN treatment (years), ≥60/<60	45/31	13/25	6/10	0.025
BMI (kg/m <sup>2</sup> ), ≥25/<25	18/53	11/27	4/12	0.830
Alcohol intake (g/day), ≥80/<80	21/54	13/25	4/12	0.725
Diabetes mellitus, present/absent	14 /62	11/27	1/15	0.142
Cirrhosis, present/absent	29/47	11/26	6/10	0.671
Platelet count (× 10 <sup>4</sup> per μL), <15 /≥15	53/21	24/13	11/5	0.767
AST (IU/L), ≥100/<100	23/52	15/23	5/11	0.633
ALT (IU/L), ≥100/<100	28/47	18/20	8/8	0.463
GGT (IU/L), ≥100/<100	24/49	14/24	3/13	0.425
Albumin (g/dL), <3.9/ ≥3.9	38/35	12/26	3/13	0.016
AFP (ng/mL), ≥10/<10	43/20	10/21	7/8	0.003

BMI: body mass index, AST: aspartate aminotransferase, ALT: alanine aminotransferase, GGT: gamma-glutamyltransferase, AFP: alpha fetoprotein

tors. No significant differences in obesity, diabetes mellitus or alcohol intake were observed between the patients with and those without either of these background factors.

#### **Risk factors for the development of HCC within five years after IFN therapy**

Because 58% of the patients developed HCC within five years of IFN therapy completion and the median period from IFN therapy completion to HCC occurrence was 4.2 years, we compared the background characteristics among the patients who developed HCC within 5, 5-10 and >10 years of IFN therapy completion.

A univariate analysis identified an advanced age (≥60 years) at IFN treatment and lower albumin (<3.9 g/dL) and higher AFP (≥10 ng/mL) levels as significant risk factors associated with HCC development within five years of IFN therapy completion (Table 2). A multivariate analysis of the predictive value of each variable for HCC development

within five years identified lower albumin [<3.9 g/dL; odds ratio (OR), 2.604] and higher AFP (≥10 ng/mL; OR, 2.809) levels as being significant (Table 3). No significant factors for HCC development after 10 years of IFN therapy completion were identified.

#### **Patients who started IFN therapy before 50 years of age**

Of the 16 patients who received IFN therapy before 50 years of age, all were men (Table 4) and 12 had cirrhosis and/or a low platelet count, while three of the remaining four patients had a background of alcohol intake. Patients with obesity and/or diabetes mellitus were included in these 15 cases, and only one patient had no background of cirrhosis, a low platelet count, alcohol intake, obesity or diabetes mellitus.

**Table 3. Multivariate Analysis of Risk Factors Associated with the Development of HCC within 5 Years after HCV Eradication**

variable	Odds ratio (95% confidence interval)	p value
Age $\geq$ 60 years at IFN treatment	2.147 (0.957-4.816)	0.064
Male sex	0.663 (0.189-2.323)	0.521
Diabetes mellitus	1.303 (0.471-3.604)	0.610
Albumin $<$ 3.9 g/dL	2.604 (1.108-6.117)	0.028
AFP $\geq$ 10ng/mL	2.809 (1.221-6.456)	0.015

AFP: alpha fetoprotein

**Table 4. Patient Characteristics at the Start of IFN Therapy among Patients who Started IFN Treatment before 50 Years of Age**

	No.
Male/female	16/0
Age at start of IFN therapy, in years (median)	38-47 (46)
Interval between end of IFN therapy and HCC occurrence, in years (median)	0.1-13 (6.5)
Platelet count, $<15 \times 10^4$ per $\mu$ L	11
Cirrhosis, present	6
Alcohol intake, $\geq$ 80 g/day	9
Diabetes mellitus, present	4
BMI, $\geq$ 25.0 kg/m <sup>2</sup>	5
None of the above risk factors	1

BMI: body mass index

**Table 5. Occurrence of HCC in SVR Patients**

Hospital	SVR patients			Age in years at last	Follow-up period after		HCC development			
	Total	Male	Female	IFN treatment	Mean	Mean	Total	Male	Female	
A	1,193	429	764	15-78	51.0	0.5-18.1	4.5	23	21	2
B	681	392	289	16-77	51.8	0.2-16.9	7.5	17	15	2
C	525	224	301	18-76	50.4	2.0-21.6	9.5	17	14	3
D	487	290	197	15-76	48.5	0.2-21.9	6.0	3	3	0
E	404	227	177	9-85	53.0	0.5-18.0	3.3	9	7	2
F	250	149	101	17-76	50.4	0.5-19.1	5.7	2	2	0
G	193	121	72	17-80	52.7	0.5-15.3	3.7	11	11	0
H	188	97	91	20-75	53.4	0.1-6.9	2.7	4	3	1
I	163	109	54	20-78	54.3	0.2-18.0	3.0	4	3	1
J	155	111	44	18-72	48.0	0.5-14.2	5.5	7	6	1
K	155	85	70	19-79	55.1	0.7-5.8	2.8	2	2	0
L	118	77	41	26-75	49.9	1.0-20.0	5.7	8	6	2
M	30	14	16	37-72	57.5	0.5-6.9	3.3	2	2	0
Total	4,542	2,325	2,217				5.5	109	95	14

**Incidence of hepatocellular carcinoma among patients with a sustained response**

Between 30 and 1,193 SVR patients were followed up at each of the 13 hospitals. The mean follow-up period was 2.7-9.5 years (Table 5). In 10 of the 13 hospitals, the mean patient age at the time of the last IFN treatment was in the 50s. Among the 4,542 SVR patients, 109 (2.4%) developed HCC within 5.5 years of the last IFN treatment. The HCC

occurrence rates for the male and female SVR patients were 4.6% and 0.6%, respectively.

**Discussion**

Several studies have discussed the risk factors for hepatocarcinogenesis following HCV eradication using IFN therapy (19-25). In these studies, the risk factors for HCC development were investigated in SVR patients. In the present

study, we reviewed the clinical features of patients who developed HCC after undergoing HCV eradication. Although the risk factors for hepatocarcinogenesis were not statistically analyzed due to the lack of data for non-HCC patients with an SVR, the characteristics of a relatively large number of patients may provide general information regarding the clinical features and present state of patients who develop HCC after obtaining an SVR in Japan.

At the time of HCC diagnosis, 117 patients had one or two tumors, and the tumor size was  $\leq 3$  cm in 102 patients. A total of 110 patients received curative therapy, suggesting that SVR patients are receiving appropriate follow-up care (23) in most of the hospitals that participated in this study.

A majority of the patients were men, received IFN treatment at an older age and had an advanced stage of liver fibrosis, as previously reported (15-21). A considerable number of patients had a background of alcohol intake, obesity and diabetes mellitus prior to IFN treatment, irrespective of the stage of liver fibrosis. These background characteristics have synergistic effects on hepatocarcinogenesis in chronic HCV patients (24-27). Some studies have suggested that alcohol intake is also a risk factor for HCC development among SVR patients (16, 17). Arase et al. (28) recently reported that both alcohol intake and diabetes increase the risk of HCC development in SVR patients without cirrhosis and non-SVR patients with cirrhosis, consistent with the findings of this study. To clarify the associations between these factors, including obesity, prospective cohort studies involving a large number of patients and data on the clinical features of patients who have undergone HCV eradication and individuals with a relatively low volume of alcohol intake, especially female patients, are needed.

An advanced age at HCV eradication is considered to be a risk factor for HCC development in SVR patients (15-21, 29), and most patients in this study were  $>50$  years when they received IFN therapy. Although 16 patients received IFN therapy before 50 years of age, 12 had advanced fibrosis with cirrhosis or a lower platelet count, and three patients were heavy alcohol drinkers before IFN treatment. The number of heavy alcohol drinkers in this group was higher than that of male patients  $>50$  years old (56.3% versus 29.7%,  $p=0.038$ ), which suggests that alcohol intake may influence hepatocarcinogenesis and the progression of liver fibrosis in this group.

Nagaoki et al. (30) reported an older age at HCV eradication and heavy alcohol intake as risk factors for HCC development within five years of HCV eradication. In this study, an older age at IFN treatment initiation tended to be associated with an increased risk of HCC, and the development of HCC within five years was significantly associated with lower albumin and higher AFP levels at IFN treatment initiation. Kurosaki et al. (31) reported lower albumin levels as one risk factor for HCC development within five years among non-SVR patients without cirrhosis. However, it is uncertain as to why lower albumin levels are correlated with

the occurrence of HCC. Regarding the AFP level, Asahina et al. (32) recently reported that the posttreatment AFP level ( $\geq 6$  ng/mL) is correlated with the development of HCC among IFN-treated patients; however, this is not the case with the pretreatment AFP level. This suggests that patients with a posttreatment AFP level of  $\geq 6$  ng/mL have a substantial risk of developing HCC and that, of these patients, those with a pretreatment AFP level of  $>10$  ng/mL have a risk for early HCC development. Therefore, patients with these characteristics should be closely followed up during and after IFN therapy.

In conclusion, our investigation revealed that most patients who develop HCC after obtaining an SVR are men with advanced fibrosis and that lower albumin and higher AFP levels before IFN treatment may increase the risk for HCC development within five years of HCV eradication. In contrast, the risk factors for HCC development after 10 years of IFN treatment are uncertain, and such patients are not rare; therefore, all patients with chronic HCV should receive long-term follow-up care to monitor for the possible development of HCC following HCV eradication.

**The authors state that they have no Conflict of Interest (COI).**

#### Ethical Considerations

This study was approved by the Medical Ethics Committee of the St. Marianna University School of Medicine. The investigation conformed to the principles outlined in the Declaration of Helsinki.

#### References

1. World Health Organization. Global Alert and Response (GAR): Hepatitis C. 2012. Accessed 27 May 2013. <http://www.who.int/mediacentre/factsheets/fs164/en/index.html>
2. Center for Cancer Control and Information Services, National Cancer Center, Japan. Cancer Statistics in Japan-2011. Accessed 27 May 2013. [http://ganjoho.jp/pro/statistics/en/backnumber/2012\\_en.html](http://ganjoho.jp/pro/statistics/en/backnumber/2012_en.html)
3. Umemura T, Kiyosawa K. Epidemiology of hepatocellular carcinoma in Japan. *Hepatol Res* 37: S95-S100, 2007.
4. Yoshida H, Shiratori Y, Moriyama M, et al. Interferon therapy reduces the risk for hepatocellular carcinoma: national surveillance program of cirrhotic and noncirrhotic patients with chronic hepatitis C in Japan. *Ann Intern Med* 131: 174-181, 1999.
5. Ikeda K, Saitoh S, Suzuki Y, et al. Disease progression and hepatocellular carcinogenesis in patients with chronic viral hepatitis: a prospective observation of 2215 patients. *J Hepatol* 28: 930-938, 1998.
6. Ikeda K, Saitoh S, Koida I, et al. A multivariate analysis of risk factors for hepatocellular carcinogenesis: a prospective observation of 795 patients with viral and alcoholic cirrhosis. *Hepatology* 18: 47-53, 1993.
7. Degos F, Christidis C, Ganne-Carrie N, et al. Hepatitis C virus related cirrhosis: time to occurrence of hepatocellular carcinoma and death. *Gut* 47: 131-136, 2000.
8. Ikeda K, Saitoh S, Arase Y, et al. Effect of interferon therapy on hepatocellular carcinogenesis in patients with chronic hepatitis C: a long term observation study of 1,643 patients using statistical bias correction with proportional hazard analysis. *Hepatology* 29: 1124-1130, 1999.

9. Bruno S, Stroffolini T, Colombo M, et al. Sustained virological response to interferon- $\alpha$  is associated with improved outcome in HCV-related cirrhosis: a retrospective study. *Hepatology* 45: 579-587, 2007.
10. Watanabe S, Enomoto N, Koike K, et al. Cancer preventive effect of pegylated interferon  $\alpha$ -2b plus ribavirin in a real-life clinical setting in Japan: PERFECT interim analysis. *Hepatol Res* 41: 955-964, 2011.
11. Mashitani T, Yoshiji H, Yamazaki M, et al. Development of hepatocellular carcinoma in a patient 13 years after sustained virological response to interferon against chronic hepatitis C: a case report. *Cases J* 2: 18, 2009.
12. Saito M, Seo Y, Yano Y, et al. Development of a hepatocellular carcinoma in a chronic hepatitis C patient 18 years after achieving a sustained virological response to interferon therapy: case report and literature review. *Clin J Gastroenterol* 5: 119-126, 2012.
13. Chiba T, Matsuzaki Y, Abei M, et al. Multivariate analysis of risk factors for hepatocellular carcinoma in patients with hepatitis C virus-related liver cirrhosis. *J Gastroenterol* 31: 552-558, 1996.
14. Kasahara A, Hayashi N, Mochizuki K, et al. Risk factors for hepatocellular carcinoma and its incidence after interferon treatment in patients with chronic hepatitis C. Osaka Liver Disease Study Group. *Hepatology* 27: 1394-1402; 1998.
15. Makiyama A, Itoh Y, Kasahara A, et al. Characteristics of patients with chronic hepatitis C who develop hepatocellular carcinoma after a sustained response to interferon therapy. *Cancer* 101: 1616-1622, 2004.
16. Iwasaki Y, Takaguchi K, Ikeda H, et al. Risk factors for hepatocellular carcinoma in Hepatitis C patients with sustained virologic response to interferon therapy. *Liver Int* 24: 603-610, 2004.
17. Tokita H, Fukui H, Tanaka A, et al. Risk factors for the development of hepatocellular carcinoma among patients with chronic hepatitis C who achieved a sustained virological response to interferon therapy. *J Gastroenterol Hepatol* 20: 752-758, 2005.
18. Ikeda M, Fujiyama S, Tanaka M, et al. Risk factors for development of hepatocellular carcinoma in patients with chronic hepatitis C after sustained response to interferon. *J Gastroenterol* 40: 148-156, 2005.
19. Tanaka A, Uegaki S, Kurihara H, et al. Hepatic steatosis as a possible risk factor for the development of hepatocellular carcinoma after eradication of hepatitis C virus with antiviral therapy in patients with chronic hepatitis C. *World J Gastroenterol* 13: 5180-5187, 2007.
20. Kobayashi S, Takeda T, Enomoto M, et al. Development of hepatocellular carcinoma in patients with chronic hepatitis C who had a sustained virological response to interferon therapy: a multicenter, retrospective cohort study of 1124 patients. *Liver Int* 27: 186-191, 2007.
21. Hirakawa M, Ikeda K, Arase Y, et al. Hepatocarcinogenesis following HCV RNA eradication by interferon in chronic hepatitis patients. *Intern Med* 47: 1637-1643, 2008.
22. The Examination Committee of Criteria for 'Obesity Disease' in Japan, Japan Society for the Study of Obesity. New criteria for 'obesity disease' in Japan. *Circ J* 66: 987-992, 2002.
23. Clinical Practice Guidelines for Hepatocellular Carcinoma: The Japan Society of Hepatology 2009 update. *Hepatol Res* 40 (Suppl 1): S2-S144, 2010.
24. Morgan TR, Mandayam S, Jamal MM. Alcohol and hepatocellular carcinoma. *Gastroenterology* 127 (Suppl 1): S87-S96, 2004.
25. Ohishi W, Fujisawa S, Cologne JB, et al. Risk factors for hepatocellular carcinoma in a Japanese population: a nested case-control study. *Cancer Epidemiol Biomarkers Prev* 17: 846-854, 2008.
26. Ohki T, Tateishi R, Sato T, et al. Obesity is an independent risk factor for hepatocellular carcinoma development in chronic hepatitis C patients. *Clin Gastroenterol Hepatol* 6: 459-464, 2008.
27. Chen CL, Yang HI, Yang WS, et al. Metabolic factors and risk of hepatocellular carcinoma by chronic hepatitis B/C infection: a follow-up study in Taiwan. *Gastroenterology* 135: 111-121, 2008.
28. Arase Y, Kobayashi M, Suzuki F, et al. Effect of type 2 diabetes on risk for malignancies includes hepatocellular carcinoma in chronic hepatitis C. *Hepatology* 57: 964-973, 2013.
29. Asahina Y, Tsuchiya K, Tamaki N, et al. Effect of aging on risk for hepatocellular carcinoma in chronic hepatitis C virus infection. *Hepatology* 52: 518-527, 2010.
30. Nagaoki Y, Aikata H, Miyaki D, et al. Clinical features and prognosis in patients with hepatocellular carcinoma that developed after hepatitis C virus eradication with interferon therapy. *J Gastroenterol* 46: 799-808, 2011.
31. Kurosaki M, Hiramatsu N, Sakamoto M, et al. Data mining model using simple and readily available factors could identify patients at high risk for hepatocellular carcinoma in chronic hepatitis C. *J Hepatol* 56: 602-608, 2012.
32. Asahina Y, Tsuchiya K, Nishimura T, et al.  $\alpha$ -fetoprotein levels after interferon therapy and risk of hepatocarcinogenesis in chronic hepatitis C. *Hepatology* 58: 1253-1262, 2013.



## $\alpha$ -Fetoprotein Levels After Interferon Therapy and Risk of Hepatocarcinogenesis in Chronic Hepatitis C

Yasuhiro Asahina,<sup>1,3</sup> Kaoru Tsuchiya,<sup>1</sup> Takashi Nishimura,<sup>1,4</sup> Masaru Muraoka,<sup>1,5</sup> Yuichiro Suzuki,<sup>1,5</sup> Nobuharu Tamaki,<sup>1</sup> Yutaka Yasui,<sup>1</sup> Takanori Hosokawa,<sup>1</sup> Ken Ueda,<sup>1</sup> Hiroyuki Nakanishi,<sup>1</sup> Jun Itakura,<sup>1</sup> Yuka Takahashi,<sup>1</sup> Masayuki Kurosaki,<sup>1</sup> Nobuyuki Enomoto,<sup>5</sup> Mina Nakagawa,<sup>2</sup> Sei Kakinuma,<sup>2,3</sup> Mamoru Watanabe,<sup>2</sup> and Namiki Izumi<sup>1</sup>

The effects of interferon (IFN) treatment and the post-IFN treatment  $\alpha$ -fetoprotein (AFP) levels on risk of hepatocellular carcinoma (HCC) in patients with chronic hepatitis C (CHC) are unknown. To determine the relationship between AFP and alanine transaminase (ALT) levels and HCC risk, a cohort consisting of 1,818 patients histologically proven to have CHC treated with IFN were studied. Cumulative incidence and HCC risk were analyzed over a mean follow-up period of 6.1 years using the Kaplan-Meier method and Cox proportional hazard analysis. HCC developed in 179 study subjects. According to multivariate analysis, older age, male gender, advanced fibrosis, severe steatosis, lower serum albumin levels, nonsustained virological response (non-SVR), and higher post-IFN treatment ALT or AFP levels were identified as independent factors significantly associated with HCC development. Cutoff values for ALT and AFP for prediction of future HCC were determined as 40 IU/L and 6.0 ng/mL, respectively, and negative predictive values of these cutoffs were high at 0.960 in each value. The cumulative incidence of HCC was significantly lower in patients whose post-IFN treatment ALT and AFP levels were suppressed to less than the cutoff values even in non-SVR patients. This suppressive effect was also found in patients whose post-IFN treatment ALT and AFP levels were reduced to less than the cutoff values despite abnormal pre-treatment levels. **Conclusion:** Post-IFN treatment ALT and AFP levels are significantly associated with hepatocarcinogenesis. Measurement of these values is useful for predicting future HCC risk after IFN treatment. Suppression of these values after IFN therapy reduces HCC risk even in patients without HCV eradication. (HEPATOLOGY 2013;58:1253-1262)

**H**epatocellular carcinoma (HCC), one of the most frequent primary liver cancers,<sup>1,2</sup> is the third most common cause of cancer mortality worldwide.<sup>3</sup> Hepatitis C virus (HCV) infection is a common cause of chronic hepatitis, which progresses to HCC in many patients.<sup>4</sup> In the last two decades, interferon (IFN) therapy has been used to treat chronic hepatitis C (CHC) with the goal of altering

the natural history of this disease. Although HCV eradication with IFN therapy for CHC has been shown to prevent HCC,<sup>5-9</sup> HCC sometimes develops even after achieving viral eradication.<sup>5</sup> Because the number of sustained virological responders (SVRs) is increasing along with recent advances in the development of effective anti-HCV therapy, it is very important to determine factors responsible for HCC

*Abbreviations:* AFP,  $\alpha$ -fetoprotein; ALT, alanine aminotransferase; APRI, aspartate aminotransferase to platelet ratio index; CHC, chronic hepatitis C; CT, computed tomography;  $\gamma$ -GTP, gamma-glutamyl transpeptidase; HCC, hepatocellular carcinoma; HCV, Hepatitis C virus; IFN, interferon; MRI, magnetic resonance imaging; PEG, pegylated; RBV, ribavirin; ROC, receiver operator characteristic; SVR, sustained virological response.

From the <sup>1</sup>Department of Gastroenterology and Hepatology, Musashino Red Cross Hospital, Tokyo, Japan; <sup>2</sup>Department of Gastroenterology and Hepatology, Tokyo Medical and Dental University, Tokyo, Japan; <sup>3</sup>Department of Liver Disease Control, Tokyo Medical and Dental University, Tokyo, Japan; <sup>4</sup>Department of Gastroenterology, Faculty of Medicine, Shiga University of Medical Science, Shiga, Japan; <sup>5</sup>First Department of Internal Medicine, Faculty of Medicine, University of Yamanashi, Yamanashi, Japan.

Received February 19, 2013; accepted April 4, 2013.

Supported by grants from the Japanese Ministry of Education, Culture, Sports, Science, and Technology, and the Japanese Ministry of Welfare, Health, and Labor.

development among IFN-treated patients. However, this information is difficult to determine because of the paucity of large-scale, long-term cohort studies.

The 70-kDa glycoprotein  $\alpha$ -fetoprotein (AFP), encoded by a gene located on chromosome 4, is the major serum protein during fetal life.<sup>10</sup> Shortly before birth, AFP is replaced by albumin as the major serum protein,<sup>11,12</sup> and thereafter, serum AFP levels remain extremely low throughout life (<10 ng/mL). Because serum AFP levels are frequently elevated in patients with HCC and germ-cell tumors, measurement of AFP is widely used as a serological marker for these tumors.<sup>8,13</sup> However, AFP levels are sometimes elevated in patients with chronic viral hepatitis and cirrhosis who do not have HCC.<sup>3,19</sup> While one possible explanation for this elevation is liver inflammation, in patients with CHC, the relationship between AFP and markers of liver inflammation such as alanine aminotransferase (ALT) is unclear. Moreover, although several reports suggest that pre-IFN treatment ALT and AFP levels in patients or those in patients who did not undergo subsequent treatment are associated with the development of HCC, it is unclear whether post-IFN treatment ALT and AFP levels are associated with hepatocarcinogenesis in patients with CHC. Hence, to clarify these associations we conducted a large-scale, long-term cohort study of patients with CHC to analyze the influence of ALT and AFP levels before and after IFN therapy on hepatocarcinogenesis in addition to other host and virological factors.

## Patients and Methods

**Patients.** Patients chronically infected with HCV who had histologically proven chronic hepatitis or cirrhosis and had undergone IFN treatment between 1992 and 2010 were enrolled in the cohort. HCC was definitively ruled out by ultrasonography, dynamic computed tomography (CT), and/or magnetic resonance imaging (MRI) on enrollment. Patients were excluded if they had a history of HCC at the time of liver biopsy, autoimmune hepatitis, primary biliary cirrhosis, excessive alcohol consumption ( $\geq 50$  g/day), hepatitis B surface antigen, or antihuman immunodeficiency virus antibody.

Based on these criteria, a total of 2,689 patients were initially enrolled. Of these, 223 (8.3%) patients were excluded from the cohort because of loss to follow-up. In the remaining 2,466 patients, 133 and 515 patients were excluded from this analysis because of short follow-up and retreatment with IFN-based therapy during the follow-up period, respectively. Thus, the cohort comprising 1,818 patients was analyzed in the present study. Written informed consent was obtained from all patients and the Ethical Committee of Musashino Red Cross Hospital approved this study, which was conducted in accordance with the Declaration of Helsinki.

**Histological Evaluation.** To obtain liver specimens, laparoscopic or ultrasound-guided liver biopsies were performed with 13G or 15G needles, respectively. The median length of specimen was 18 mm (range, 11-41 mm), and the mean number of portal tracts was 17 (range, 9-35). The stage of fibrosis and the grade of inflammatory activity were scored by two pathologists according to the classification of Desmet et al.<sup>24</sup> The percentage of steatosis was quantified by determining the average proportion of hepatocytes affected.

**IFN Therapy and Definitions of Response to IFN Therapy.** All patients had chronic HCV infection at liver biopsy, which was confirmed by the presence of HCV-RNA in serum. All IFN therapies were initiated within 48 weeks after liver biopsy. Among the 1,818 patients, 535 received IFN $\alpha$  or IFN $\beta$  monotherapy for 24 weeks, 244 patients received IFN $\alpha$  ribavirin (RBV) combination therapy for 24 weeks, 299 patients received pegylated (PEG-) IFN $\alpha$  monotherapy for 48 weeks, and 760 patients received PEG-IFN $\alpha$  RBV combination therapy for 48-72 weeks.

Patients negative for serum HCV-RNA 24 weeks after IFN therapy completion were defined as SVRs. Patients who remained positive for HCV-RNA 24 weeks after therapy completion were defined as non-SVRs. HCV-RNA was determined by the qualitative Amplicor or TaqMan HCV assay (Roche Molecular Diagnostics, Tokyo, Japan).

**Data Collection and Patient Follow-up.** At enrollment, patient characteristics, biochemical,

---

Address reprint requests to: Yasuhiro Asahina, M.D., Ph.D., Professor, Department of Liver Disease Control, Department of Gastroenterology and Hepatology, Tokyo Medical and Dental University, 1-5-45 Yushima, Bunkyo-ku, Tokyo 113-8519, Japan. E-mail: asahina.gast@tmd.ac.jp; fax: +81-3-5803-0268.

Copyright © 2013 by the American Association for the Study of Liver Diseases.

View this article online at [wileyonlinelibrary.com](http://wileyonlinelibrary.com).

DOI 10.1002/hep.26442

Potential conflict of interest: Dr. Asahina is on the speakers' bureau of Chugai Pharma and MSD, and received research funding from Daiichi-Sankyo and Chugai Pharma. Dr. Asahina and Dr. Kakinuma belong to a donation-funded department funded by Chugai Pharma, Tōzay, Bristol-Myers Squibb, Daiinippon-Sumitomo Pharma, and MSD.

Additional Supporting Information may be found in the online version of this article.

**Table 1. Characteristics of Patients Enrolled in the Present Study**

Factors	Value
Patients, n	1818
Sex, n (%)	
Male	833 (45.8)
Female	985 (54.2)
Age (SD), year	57.1 (12.0)
BMI (SD), kg/m <sup>2</sup>	23.1 (3.2)
Fibrosis stage, n (%)	
F1/2	1384 (76.1)
F3/4	434 (23.9)
Activity grade, n (%)	
A0/1	964 (53.0)
A2/3	854 (47.0)
%Severe steatosis (≥10%)	23.7
Albumin (SD), g/dL	4.0 (0.38)
ALT (SD), IU/L	78.3 (71.0)
γ-GTP (SD), IU/L	49.8 (50.6)
T. Bilirubin (SD), mg/dL	0.73 (0.34)
Fasting blood sugar (SD), mg/dL	113.4 (37.8)
LDL-Cholesterol (SD), mg/dL	101.6 (28.9)
T. Cholesterol (SD), mg/dL	176.2 (38.4)
AFP (SD), ng/mL	11.3 (28.3)
WBC counts (SD), /μL	4990 (1516)
Hb (SD), g/dL	14.0 (1.7)
Platelet counts (SD), x10 <sup>3</sup> /μL	164 (54)
HCV load (SD), KIU/mL	1097 (1263)
HCV genotype, n (%) <sup>*</sup>	
1a	11 (0.56)
1b	1183 (67.4)
2a	361 (20.6)
2b	180 (10.3)
Others	20 (1.1)
%Core 70 a.a. mutation <sup>†</sup>	34.2
%ISDR wild or 1 mutation <sup>‡</sup>	63.9
IFN regimen, n (%)	
IFN mono	758 (35.0)
IFN + RBV	275 (12.7)
PEG-IFN mono	307 (14.2)
PEG-IFN + RBV	758 (38.2)

Unless otherwise indicated, data are given as mean (SD).

<sup>\*</sup>HCV genotype was determined in 1755 patients.

<sup>†</sup>HCV core mutation was determined in 409 patients with genotype 1b.

<sup>‡</sup>ISDR was determined in 1264 patients with genotype 1b.

Abbreviations: BMI, body mass index; ALT, alanine aminotransferase; γ-GTP, γ-glutamyl transpeptidase; LDL, low-density lipoprotein; AFP, α-fetoprotein; WBC, white blood cell; Hb, hemoglobin; HCV, hepatitis C virus; ISDR, interferon sensitivity determining region; IFN, interferon; RBV, ribavirin; PEG, pegylated.

hematological, virological, and histological data were collected. Age was determined at the time of primary liver biopsy. Patients were examined for HCC by abdominal ultrasonography, dynamic CT, and/or MRI every 3-6 months. Serum ALT and AFP levels were measured every 1-6 months. The surveillance protocols were in accordance with the standard of care in Japan. If HCC was suspected on the basis of the screening examination, additional procedures (e.g., dynamic CT, dynamic MRI, CT during hepatic arteriography, CT during arterial portography, contrast-enhanced ultrasonography, and tumor

biopsy) were used to confirm the diagnosis. HCC diagnosis was confirmed by needle biopsy, histology of surgically resected specimens, or characteristic radiological findings. To evaluate the effects of changes in serum ALT and AFP levels during IFN therapy on hepatocarcinogenesis, the average integration values of ALT and AFP in each patient were calculated before and after IFN therapy. Data obtained more than 1 year prior to HCC development were used to exclude AFP elevation caused by HCC itself.

Follow-up was between the date of primary liver biopsy and HCC development or the last medical attendance until June 2011. The mean follow-up period was 6.1 years (range, 1.0-20.8 years).

**Statistical Analyses.** Categorical data were compared by the chi-square test or Fisher's exact test. Distributions of continuous variables were analyzed with Student *t* test for two groups. All tests of significance were two-tailed and *P* < 0.05 was considered statistically significant. The cumulative incidence curve was determined by the Kaplan-Meier method, and differences among groups were assessed using the log-rank test. Factors associated with HCC risk were determined by the Cox proportional hazard model. As covariates in the multivariate stepwise Cox model, age, sex, stage of liver fibrosis, grade of histological activity, presence of hepatic steatosis, serum albumin levels, γ-glutamyl transpeptidase (γ-GTP) level, fasting blood sugar levels, platelet counts, pre-IFN ALT levels, pre-IFN AFP levels, post-IFN ALT levels, post-IFN AFP levels, and virological response were included. HCC development was the dependent variable. Time zero was defined as the time of primary liver biopsy. The proportional assumption was supported by log[-log(survival)] versus log(time) plots that showed parallel lines. Statistical analyses were performed using the Statistical Package for the Social Sciences software v. 18.0 (SPSS, Chicago, IL).

## Results

**Patient Characteristics and Factors Associated With Risk of HCC.** Table 1 shows patient characteristics at the time of enrollment. During follow-up, HCC developed in 179 patients. The cumulative incidence of HCC for 5 and 10 years was 6.5% and 15.0%, respectively. The final virological response to IFN therapy was determined in all patients. The overall rate of SVRs was 50.2% (913/1818). The cumulative incidence in SVRs was 2.3% and 5.5%, respectively, which was significantly lower than that in non-SVRs (6.9% and 21.9%, respectively; log-rank test, *P* < 0.0001).

Univariate analysis demonstrated factors that increase the risk for HCC development (Table 2). According to

multivariate stepwise Cox analysis, older age, male gender, advanced fibrosis, severe steatosis, lower serum albumin levels, non-SVR, and higher post-IFN treatment ALT and AFP levels, but not pre-IFN treatment ALT and AFP levels, were identified as independent factors that were significantly associated with HCC development (Table 2).

**Association of Post-IFN Treatment ALT and AFP Levels With HCC Development in SVRs and Non-SVRs.** Because our multivariate analysis identified post-IFN treatment ALT and AFP levels as independent factors associated with HCC risk, we determined the cutoff values of these factors for predicting the development of HCC by receiver operator characteristics (ROC) analysis. The area under the ROC curve for post-IFN treatment ALT and AFP levels were higher than that for pre-IFN treatment ALT and AFP levels, suggesting that quantification of post-IFN treatment ALT and AFP levels rather than pre-IFN treatment levels of these values is useful for predicting HCC (Fig. 1A). From this ROC analysis, ALT <40 IU/L and AFP <6.0 ng/mL were identified as cutoff values. Negative predictive values were extremely high at 0.960 in each value, suggesting patients with ALT and/or AFP levels below these cutoff values are at a lower risk for HCC.

As shown in Fig. 1B, the hazard ratio determined by Cox proportional hazard analysis after adjustment for age, sex, stage of liver fibrosis, degree of liver steatosis, serum albumin levels, and virological response to therapy demonstrated that the hazard ratio for HCC was dependent on post-IFN treatment ALT and AFP levels. These hazard ratios increased predominantly when post-IFN treatment ALT and AFP levels were more than the cutoff values.

As shown in Fig. 2, the cumulative incidence of HCC was closely related to post-IFN treatment ALT and AST levels and was significantly lower in patients whose post-IFN treatment ALT and AFP levels was suppressed to <40 IU/L and 6.0 ng/mL, respectively. This suppressive effect was also notable in non-SVRs (Fig. 2C,D). Moreover, the cumulative incidence of HCC was significantly higher even in SVRs whose post-IFN treatment ALT and AFP levels were not <40 IU/L and 10 ng/mL, respectively (Fig. 2E,F).

**Changes in ALT and AFP Levels With IFN Therapy and HCC Development.** In the entire cohort, the mean ALT and AFP levels significantly decreased after IFN therapy (ALT = 78.4 to 36.6 IU/L, 95% confidence interval [CI] = 38.6-45.0,  $P < 0.0001$ ; AFP = 11.3 to 6.9 ng/mL, 95% CI = 3.25-5.69,  $P < 0.0001$ ; paired Student  $t$  test), and this significant

**Table 2. Factors Associated With Hepatocellular Carcinoma**

Risk Factor	Hazard Ratio (95% CI)	P Value
<b>Univariate analysis</b>		
Age (by every 10 year)	1.82 (1.52-2.20)	<0.0001
Sex		
Female	1	
Male	1.61 (1.20-2.17)	<0.0001
Fibrosis stage		
F1/F2	1	
F3/F4	4.90 (3.64-6.61)	<0.0001
Activity grade		
A0/A1	1	
A2/A3	3.38 (2.41-4.74)	<0.0001
Degree of steatosis		
<10%	1	
≥10%	3.84 (2.62-5.63)	<0.0001
Albumin (by every 1 g/dL)	0.18 (0.22-0.25)	<0.0001
Pre-ALT (by every 40 IU/L)	1.04 (0.96-1.08)	0.525
Post-ALT (by every 40 IU/L)	1.68 (1.55-1.81)	<0.0001
γ-GTP (by every 40 IU/L)	1.17 (1.08-1.27)	<0.0001
Fasting blood sugar (by every 100 mg/dL)	1.82 (1.35-2.45)	<0.0001
Pre-AFP (by every 10 ng/mL)	1.07 (1.05-1.09)	<0.0001
Post-AFP (by every 10 ng/mL)	1.08 (1.06-1.12)	<0.0001
Platelet counts (by every 10 <sup>4</sup> /μL)	0.88 (0.85-0.90)	<0.0001
Genotype		
Non-1	1	
1	2.27 (1.51-3.45)	<0.0001
Core 70 mutation		
Wild	1	
Mutant	2.79 (1.19-6.53)	0.018
ISDR		
More than 1 mutation	1	
Wild or 1 mutation	1.27 (0.87-1.85)	0.216
Virological response		
SVR	1	
Non-SVR	3.66 (2.51-5.35)	<0.0001
<b>Multivariate analysis</b>		
Age (by every 10 year)	2.18 (1.71-2.81)	<0.0001
Sex		
Female	1	
Male	2.66 (1.86-3.80)	<0.0001
Fibrosis stage		
F1/F2	1	
F3/F4	2.27 (1.58-3.27)	<0.0001
Degree of steatosis		
<10%	1	
≥10%	2.29 (1.49-3.50)	<0.0001
Albumin (by every 1 g/dL)	0.35 (0.23-0.55)	<0.0001
Post-ALT (by every 40 IU/L)	1.81 (1.55-2.12)	<0.0001
Post-AFP (by every 10 ng/mL)	1.06 (1.02-1.10)	0.007
Virological response		
SVR	1	
Non-SVR	1.58 (1.01-2.48)	0.044

Hazard ratios for development of hepatocellular carcinoma were calculated by the Cox proportional hazards analysis. ALT, alanine aminotransferase; γ-GTP, gamma-glutamyl transpeptidase; AFP, alpha-fetoprotein; ISDR, interferon sensitivity determining region; SVR, sustained virological responder. As covariates in the multivariate stepwise Cox model, age, sex, stage of liver fibrosis, grade of histological activity, presence of hepatic steatosis, serum albumin levels, γ-GTP level, fasting blood sugar levels, platelet counts, pre-IFN ALT levels, pre-IFN AFP levels, post-IFN ALT levels, post-IFN AFP levels, and virological response were included.

decrease was found not only in SVRs, but also non-SVRs (Fig. 3A). Because post-IFN treatment ALT and AFP levels rather than pre-IFN treatment levels were