

2.09,  $p = 0.0001$ ) were independent risk factors associated with overall survival. There was no significant difference in overall survival and recurrence exceeding the Milan criteria between the patients ( $n = 11$ ) whose imaging findings by mRECIST criteria at 3 months after RFA were non-complete response (non-CR) and the patients with complete response (CR) ( $n = 312$ ).

#### Predictability of the long-term survival rate and recurrence exceeding the Milan criteria by risk group

To predict long-term survival and recurrence exceeding the Milan criteria, we formed risk groups on the basis of two relevant clinical predictors: the initial tumor marker (AFP,  $>100$  ng/mL) and the presence of earlier recurrence. The cumulative incidence of recurrence exceeding the Milan criteria according to these predictors is shown in Figure 1, and the cumulative survival rate is shown in Figure 2. The 3- and 5-year survival rates of patients with both risk factors were 33.5% and 22.6%, respectively, although the patients were initially treated with RFA for early stage HCC. The cumulative recurrence rate for the low risk group ( $n = 203$ ), who had no risk factor (initial AFP, early recurrence, tumor size), at 1, 3, 5 years were 3.7%, 66.5%, 74.7% and the cumulative survival rate for the low risk group at 1, 3, 5, 7, 10 years were 98.5%, 93.1%,

78.0%, 56.5% and 46.6%.

## DISCUSSION

In the present study, long-term survival after RFA was similar to that of patients receiving hepatic resection (13-17), especially in those with early stage HCC. Moreover, major complications were observed only in 0.6% of patients, indicating that RFA has considerable merit regarding both effectiveness and safety. The overall outcomes were similar to those in a report by Tateishi et al. (8) in which the 5-year survival rate was 54.3% and the rate of major complications was 1.9%/session. Ogihara et al. (17) reported that RFA was less invasive and associated with a lower complication rate and lower cost compared with resection. Their data also indicated that RFA was effective in ensuring local control of stage T1 HCC and was associated with survival rates similar to those obtained by surgical resection. Cucchetti et al (18) verified RFA was more cost-effective than resection for patients with very early HCC and in the presence of two or three nodules  $\leq 30$  mm and for patients with single larger early stage HCCs, surgical resection remained the best strategy to adopt as a result of better survival rates at an acceptable increase in cost.

Llovet et al. (19) reported that RFA was a useful bridging therapy for liver transplantation because a higher dropout rate (38%/year) was reported in patients without adequate adjuvant therapy for HCC. In a recent study of recurrent HCC within the Milan criteria (10), the 1-, 3-, and 5-year tumor-free survival rates for salvage liver transplantation were all 60% and the excellent 10-year survival would be expected for these patients. Therefore, it is very important to clarify the risk factors associated with exceeding the Milan criteria after locally curative RFA. We determined the probability and risk factors for tumor progression beyond the Milan criteria after successful locally curative RFA for primary HCC. Our results showed a recurrence rate exceeding the Milan criteria of 15.1% at 1 year to 46.0% at 3 years and patients who had a larger tumor size (diameter, > 20mm ) and/or a higher AFP level (>100 ng/mL) at initial presentation and early recurrence after initial RFA were at a high risk for recurrence exceeding the Milan criteria. Therefore, in such high-risk patients, RFA should be carefully considered as a bridging therapy for liver transplantation and the physician should follow these patients carefully for tumor progression even after successful initial RFA.

We have reported that K19 expression was related to a high recurrence of HCC after RFA in 249 patients (20), and Ziol M, et al. (21) have reported that Endothelial

Accepted Article

cell-specific molecule-1 (ESM-1) in stromal cells was predictive of recurrence after RFA in early HCC in 150 patients. However, there is no HCC-specific biomarker that can be measured to link post-RFA biology to recurrence and outcome and that is better than serum AFP. Tateishi, et al. (22) have reported on the prediction of the recurrence of HCC after RFA in 416 patients. Tumor marker levels were determined immediately before and 2 months after the treatment. The timing and frequency of measuring AFP would be 2 months after the RFA and then every 2–3 months.

There was no significant difference in the overall survival and recurrence exceeding the Milan criteria among patients with HCV, HBV, and NBNC. In patients with HCV (n = 248), larger tumor size (diameter, >20mm), AFP >100 ng/mL, and recurrence within 1 year after the initial ablation were independently associated with earlier recurrence exceeding the Milan criteria. AFP >100 ng/mL, and recurrence within 1 year after the initial ablation were independently associated with overall survival. In patients with HBV (n = 31), AFP >100 ng/mL was the only independent factor that was associated with overall survival. In patients with NBNC (n = 41), recurrence within 1 year after the initial ablation was the only independent factor that was associated with earlier recurrence exceeding the Milan criteria. The patients with both positive HBs antigen and HCV antibody (n = 3) were excluded from this analysis. However, the

number of patients with positive HBs antigen or with negativity of both HBs antigen and HCV antibody were too small to clarify the differences based on the underlying cause of liver disease.

In the initial study population of 554 primary HCCs, The 35 patients who received surgical resection were Child-Pugh A or non-cirrhotic patients, so they could not submit liver transplantation. The 158 patients who received TACE, 10 patients who received systemic cytotoxic chemotherapy, 20 patients who received best supportive care and 2 patients who received radiation therapy were exceeding for the Milan criteria. The remaining 6 patients were over 65 years old and could not submit liver transplantation. We did not include the patients who received TACE as an initial therapy in this study, because they already exceeded the Milan criteria. The number of the patients who received other therapies (Resection, MCT, PEI) was too small to analyze the recurrence and prognosis.

In our study, the incidence rate of exceeding the Milan criteria was similar to the data reported by Yamashiki et al. (23) in which the overall recurrence rate exceeding the Milan criteria was 9.0% and 32.8% at 1 and 3 years, respectively. Similar to us, they found that a high serum level of AFP or PIVKA-II and a tumor diameter of > 30mm affected the recurrence exceeding the Milan criteria as a result of tumor progression. An

Accepted Article

elevated AFP level may be related to the histological grading. Parfitt et al. (24) reported that the histological grade of tumor differentiation and macroscopic vascular invasion were independent predictors of long-term survival after liver transplantation. However, the most significant risk factor in our cohort was early recurrence after initial RFA, suggesting that careful surveillance for recurrence is necessary even after complete local ablation, and if early recurrence occurs within 1 year, liver transplantation should be considered as soon as possible to avoid loss of the indication, even in patients in whom initial tumor size and number are small. Importantly, liver function tests, such as albumin level and prothrombin activity, were not identified as risk factors for recurrence exceeding the Milan criteria in our cohort, suggesting that preserved liver function itself does not necessarily indicate that there has been an adequate waiting time.

We here calculated the risk score from two simple factors: the initial tumor marker and early recurrence after initial complete RFA. The 3- and 5-year survival rates of patients with both risk factors were 33.5% and 22.6%, respectively, in spite of early stage at initial ablation. Conversely, the 3- and 5-year survival rates of patients with neither risk factor were 93.1% and 78.0%, respectively. The number of patients with both risk factors was small (12.1%); however, new therapeutic strategies (early transplantation or

repeated adjuvant therapy) were necessary to achieve long-term survival.

Takada et al. (25) reported that repeated nontransplant treatment for recurrent HCC, such as RFA and transluminal arterial embolization, prior to living donor liver transplantation (LDLT) might increase the risk of recurrence and impair the survival advantage conferred by LDLT. As our study focused mainly on recurrence exceeding the Milan criteria, we did not assess whether RFA performed prior to liver transplantation affected the final outcome of patients who actually received liver transplantation. Therefore, further controlled studies are warranted to confirm whether bridging therapy with RFA actually leads to better survival after transplantation. Nevertheless, liver transplantation should be considered before the patient exceeds the Milan criteria in order to achieve excellent survival after liver transplantation.

In conclusion, RFA presents a promising bridging therapy for liver transplantation in patients who are at low risk of tumor progression. However, patients with a higher AFP level at initial RFA and earlier recurrence even after successful RFA should be considered for timely liver transplantation or new adjuvant therapy. In these patients, the 3- and 5-year survival rates were below 50% although they were classified as early stage at initial therapy.

Accepted Article

#### Acknowledgment

This study was supported by grants from the Japanese Ministry of Education, Culture, Sports, Science and Technology and the Japanese Ministry of Welfare, Health and Labor.



Accepted Article

## REFERENCES

- 1) Jemal A, Bray F, Melissa M, Ferlay J, Ward E, Forman D. Global Cancer Statistics. CA Cancer J Clin 2011; 61: 69-90.
- 2) McGynn KA, Tsao L, Hsing AW, Devesa SS, Fraumeni JF Jr. International trends and patterns of primary liver cancer. Int J Cancer 2001; 94: 290-296.
- 3) Bruix J, Sherman M. Management of hepatocellular carcinoma: an update. Hepatology 2011; 53: 1020-1022.
- 4) Mazzaferro V, Regalia E, Doci R et al. Liver transplantation for the treatment of small hepatocellular carcinomas in patients with cirrhosis. N Engl J Med 1996; 334: 693-699.
- 5) Leung JY, Zhu AX, Gordon FD et al. Liver transplantation outcomes for early-stage hepatocellular carcinoma: results of a multicenter study. Liver Transplant 2004; 10: 1343-1354.

6) Mazzaferro V, Chun YS, Poon RT et al. Liver transplantation for hepatocellular carcinoma. *Ann Surg Oncol* 2008; 15: 1001-1007.

7) Tateishi R, Shiina S, Teratani T et al. Percutaneous radiofrequency ablation for hepatocellular carcinoma. *Cancer* 2005; 103: 1201-1209.

8) Teratani T, Yoshida H, Shiina S et al. Radiofrequency ablation for hepatocellular carcinoma in so-called high-risk locations. *Hepatology* 2006; 43: 1101-1108.

9) Lu DSK, Yu NC, Raman SS et al. Percutaneous radiofrequency ablation of hepatocellular carcinoma as a bridge to liver transplantation. *Hepatology* 2005; 41: 1130-1137.

10) Chan AC, Chan SC, Chok KS, et al. Treatment strategy for recurrent hepatocellular carcinoma: salvage transplantation, repeated resection, or radiofrequency ablation? *Liver Transpl.* 2013; 19: 411-9

11) Llovet JM, Brú C, Bruix J. Prognosis of hepatocellular carcinoma: the BCLC staging

classification. *Semin Liver Dis.* 1999; 19 : 329-38.

12) Asahina Y, Nakanishi H, Izumi N. Laparoscopic radiofrequency ablation for hepatocellular carcinoma. *Digestive Endosc* 2009; 21: 67-72.

13) Vivarelli M, Guglielmi A, Ruzzenente A et al. Surgical resection versus percutaneous radiofrequency ablation in the treatment of hepatocellular carcinoma on cirrhotic liver. *Ann Surg* 2004; 240: 102-107.

14) Guglielmi A, Ruzzenente A, Valdegamberi A et al. Radiofrequency ablation versus surgical resection for the treatment of hepatocellular carcinoma in cirrhosis. *J Gastrointest Surg* 2008; 12: 192-198.

15) Cho CM, Tak WY, Kweon YO et al. The comparative results of radiofrequency ablation versus surgical resection for the treatment of hepatocellular carcinoma. *Korean J Hepatol* 2005; 11: 59-71.

16) Ogihara M, Wong LL, Machi J. Radiofrequency ablation versus surgical resection

for single nodule hepatocellular carcinoma: Long-term outcomes. *HPB (Oxford)*. 2005; 7: 214-221.

17) Hasegawa K, Makuuchi M, Takayama T et al. Surgical resection vs. percutaneous ablation for hepatocellular carcinoma: A preliminary report of the Japanese nationwide survey. *J Hepatol* 2008; 49: 589-594

18) Cucchetti A, Piscaglia F, Cescon M, et al. Cost-effectiveness of hepatic resection versus percutaneous radiofrequency ablation for early hepatocellular carcinoma. *J Hepatol*. 2013 ; 59 : 300-7

19) Llovet JM, Schwartz M, Mazzaferro V. Resection and liver transplantation for hepatocellular carcinoma. *Semin Liver Dis* 2005; 25: 181-200.

20) Tsuchiya K, Komuta M, Yasui Y, et al. Expression of keratin 19 is related to high recurrence of hepatocellular carcinoma after radiofrequency ablation. *Oncology*. 2011 ; 80 : 278-88.

Accepted Article

21) Ziol M, Sutton A, Calderaro J, et al. ESM-1 expression in stromal cells is predictive of recurrence after radiofrequency ablation in early hepatocellular carcinoma. *J Hepatol.* 2013. Epub ahead of print

22) Tateishi R, Shiina S, Yoshida H, et al. Prediction of recurrence of hepatocellular carcinoma after curative ablation using three tumor markers. *Hepatology.* 2006 ; 44(6):1518-27.

23) Yamashiki N, Tateishi R, Yoshida H et al. Ablation therapy in containing extension of hepatocellular carcinoma: A simulative analysis of dropout from the waiting list for liver transplantation. *Liver Transpl* 2005; 11: 508-514.

24) Parfitt JR, Marotta P, Alghamdi M et al. Recurrent hepatocellular carcinoma after transplantation: Use of a pathological score on explanted livers to predict recurrence. *Liver Transpl* 2007; 13: 543-551.

25) Takada Y, Ueda M, Ito T et al. Living donor liver transplantation as a second-line therapeutic strategy for patients with hepatocellular carcinoma. *Liver Transpl* 2006; 12:

912-919.  
**Accepted Article**

Accepted Article

#### Figure Legends

Figure 1. The cumulative recurrence rate exceeding the Milan criteria stratified by the number of risk factors. The cumulative recurrence rate exceeding the Milan criteria in patients with more risk factors was significantly higher than that in patients with fewer risk factors ( $p < 0.0001$ )

Figure 2. The cumulative survival rate stratified by the number of risk factors. The cumulative survival rate in patients with more risk factors was significantly lower than that in patients with fewer risk factors ( $p < 0.0001$ )

Table 1. Patient characteristics

Characteristics	Value
Patients, n	323
Age, years	66 ± 9
Duration of follow-up, years	4.0 (0.6-12.2)
Gender, male/female (%)	191 (59)/132 (41)
Clinical and laboratory data	
AFP, median (range), ng/mL	25.6 (1.2-76600)
PIVKA-II, median (range), mAU/mL	25 (7-10600)
Child-Pugh score, A/B (%)	256 (79)/67 (21)
Pathology	
Maximum diameter of HCC, mm	
<20/21-30/31-50 (%)	117 (36)/158 (49)/48 (15)
Number of HCC nodules, n	
Single/multiple (%)	226 (70)/97 (30)
CLIP score, 0/1/2/3 (%)	173 (52)/114 (37)/32 (10)/3 (1)
Lymph node involvement	0
Metastasis	0



Accepted Article

Major associated liver diseases

HCV/HBV/HCV+HBV/others (%) 248 (76.8)/31 (9.6)/3 (0.9)/41 (12.7)

---

Table 2. Cox proportional hazards analysis for recurrence exceeding the Milan criteria (n = 323).

Factors	Univariate analysis	Multivariate analysis	
	p value	p value	(HR, 95% CI)
Age, >65 years	0.644		
Child-Pugh score (B compared with A)	0.098		
AFP, >100 ng/mL	0.0006	0.0059	(1.59, 1.14–2.23)
PIVKA-II, >100 mAU/mL	0.0004	0.211	(1.26, 0.87–1.84)
Tumor size, > 20mm	0.0033	0.012	(1.54, 1.09–2.16)
Tumor number, >2	0.291		
Early recurrence (within 1 year after RFA)	<0.0001	<0.0001	(2.76, 2.05–3.71)

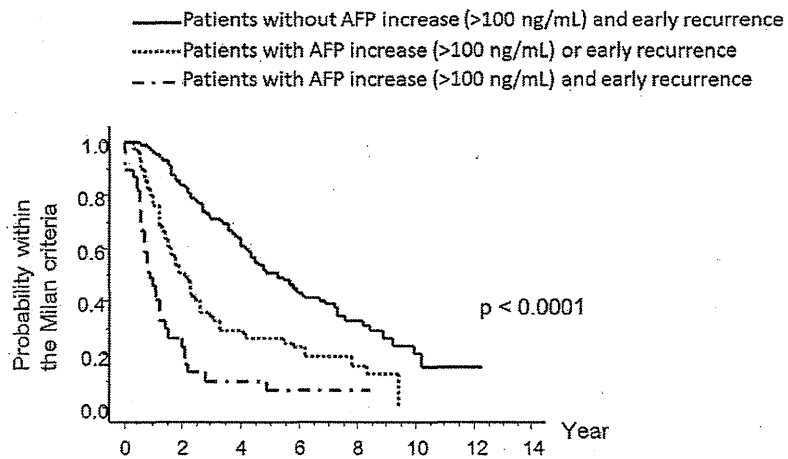
HR = hazard ratio; CI = confidence interval

Table 3. Cox proportional hazards analysis for overall survival (n = 323).

Factors	Univariate analysis	Multivariate analysis
	p value	p value (HR, 95%CI)
Age, >65 years	0.644	
Child–Pugh score (B compared with A)	<0.0001	<0.0001 (2.42, 1.61–3.64)
AFP, >100 ng/mL	<0.0001	0.0003 (2.03, 1.37–3.00)
PIVKA-II, $\geq$ 100 mAU/mL	0.136	
Tumor size, > 20mm	0.943	
Tumor number, >2	0.0037	0.056 (1.45, 0.99–2.13)
Early recurrence (within 1 year after RFA)	<0.0001	0.0001 (2.09, 1.43–3.03)

HR = hazard ratio; CI = confidence interval

Figure 1



254x190mm (300 x 300 DPI)

Accept