

We compared the phenotypes and functions of LMNCs after treatment with various T-cell depletion reagents, showing that GMP CD3 displayed same results as OKT3. Treatment with other T-cell depletion reagents, such as antithymocyte globulin and alemtuzumab, revealed unexpectedly strong cytotoxicity and anti-HCV effects on liver NK cells. Although antithymocyte globulin and alemtuzumab are difficult to use in immunotherapy because they completely bind the CD16 ligand on NK cells, these antibodies might affect NK cell function in in vitro culture systems.

This in vitro study showed that after treatment with GMP CD3 the degree of T-cell contamination and the NK cell phenotype and function, were similar to those after OKT3 treatment. T-Cell contamination was significantly decreased by either GMP CD3 or OKT3 treatment (Fig 1A). The 0.2% CD3⁺ T-cell persistence in the final product represents an acceptable level for allogeneic transplantation.¹⁶ Residual OKT3-coated T cells were dysfunctional. The NK cell percentage was the same in both groups. GMP CD3 treatment did not affect NK cell phenotype, including activation receptors, inhibitory receptors, and TRAIL. CD3⁻CD56⁺ NK cells expressed CD16, CD69, NKG2D, NKp30, NKp40, NKp46, TRAIL, and killer cell immunoglobulin-like receptors (KIRs), such as CD158a and CD158b (Fig 1B). Functional assays revealed that cytotoxicity and anti-HCV activity were maintained after GMP CD3 treatment. These results were reasonable, because both OKT3 and GMP CD3 are mouse IgG2as, whose Fc R receptor binds poorly to CD16. No animal- or human-derived components were used for the manufacture of this antibody. GMP CD3 is a reagent for research use and ex vivo cell culture processing only. It is not intended for in vivo human applications. GMP CD3 is manufactured and tested under a certificated ISO 9001 quality system in compliance with relevant GMP guidelines. It was designed following the recommendations of USP 1043 on ancillary materials.³⁶ GMP CD3 has been applied to expand cytokine-induced killer cells.³⁷

In this study, we chose to examine the effects of other T-cell depletion antibodies. Currently, a wide variety of both polyclonal antibodies (antithymocyte globulin) and mAbs (alemtuzumab) are routinely used to deplete T cells in organ transplantation. Antithymocyte globulin contains a wide variety of antibody specificities directed toward immune response antigens, adhesion and cell trafficking molecules, and markers of heterogeneous pathways, including CD2, CD3, CD4, CD8, CD11a, CD16, CD25, CD44, CD45, HLA-DR, and HLA class I.³⁸ Alemtuzumab is the humanized form of a murine anti-CD52 mAb, a membrane glycoprotein with unknown function that is expressed on lymphocytes, macrophages, monocytes, and eosinophils. It is especially highly expressed on lymphocytes (up to 5% of surface antigens), explaining its powerful immunodepletion. Interestingly, antithymocyte globulin enhances the expression of IL-2 receptors (CD25 and CD132) and alemtuzumab of the activation receptor (NKp44) on NK cells

(Fig 1B). Under IL-2 stimulation, either antithymocyte globulin- or alemtuzumab-treated liver NK cells showed strong cytotoxicity and anti-HCV activity (Fig 2 and 3). Our results clearly support the conclusion of other authors that binding of antithymocyte globulin to NK cells leads to cell activation and IFN- γ production.^{36,39} The possible mechanism is that the binding of antithymocyte globulin or alemtuzumab to CD16 produces NK cell activation and degranulation.⁴⁰ However, antithymocyte globulin and alemtuzumab have also been reported to be potent to induce NK cell death and impair cytotoxicity.^{41,42} When used for immunotherapy, antithymocyte globulin- or alemtuzumab-binding NK cells are destroyed through immunologic mechanisms such as complement-mediated and/or antibody-dependent cytotoxicity.⁴³

In summary, we have shown the effects of GMP CD3 antibody to be similar to those of OKT3, namely, depletion of T cells and induction of NK cell phenotype and function. We have already applied this method to clinical immunotherapy using liver NK cells for liver transplant patients with HCC (ClinicalTrials.gov identifier: NCT01147380) after IRB and Food and Drug Administration approval in the United States. Our findings also support the hypothesis that T-cell depletion antibodies affect NK cell function with the use of in vitro culture systems.

ACKNOWLEDGMENTS

The authors thank Dr. Naoya Sakamoto (Department of Gastroenterology and Hepatology, Tokyo Medical and Dental University, Tokyo, Japan) for providing the Huh7/Rep-Feo cell line (HCV replicon cells).

REFERENCES

1. Levi DM, Tzakis AG, Martin P, et al. Liver transplantation for hepatocellular carcinoma in the model for end-stage liver disease era. *J Am Coll Surg*. 2010;210:727-736.
2. Saab S, Yeganeh M, Nguyen K, et al. Recurrence of hepatocellular carcinoma and hepatitis B reinfection in hepatitis B surface antigen-positive patients after liver transplantation. *Liver Transpl*. 2009;15:1525-1534.
3. Petrovic LM. Early recurrence of hepatitis C virus infection after liver transplantation. *Liver Transpl*. 2006;12:S32-S37.
4. Brown RS. Hepatitis C and liver transplantation. *Nature*. 2005;436:973-978.
5. Vivarelli M, Cucchetti A, la Barba G, et al. Liver transplantation for hepatocellular carcinoma under calcineurin inhibitors: reassessment of risk factors for tumor recurrence. *Ann Surg*. 2008;248:857-862.
6. Chinnadurai R, Velazquez V, Grakoui A. Hepatic transplant and HCV: a new playground for an old virus. *Am J Transplant*. 2012;12:298-305.
7. Trinchieri G. Biology of natural killer cells. *Adv Immunol*. 1989;47:187-376.
8. Robertson MJ, Ritz J. Biology and clinical relevance of human natural killer cells. *Blood*. 1990;76:2421-2438.
9. Takahashi M, Ogasawara K, Takeda K, et al. LPS induces NK1.1+ alpha beta T cells with potent cytotoxicity in the liver of mice via production of IL-12 from Kupffer cells. *J Immunol*. 1996;156:2436-2442.
10. Seki S, Habu Y, Kawamura T, et al. The liver as a crucial organ in the first line of host defense: the roles of Kupffer cells,

- natural killer (NK) cells and NK1.1 Ag+ T cells in T helper 1 immune responses. *Immunol Rev.* 2000;174:35–46.
11. Ochi M, Ohdan H, Mitsuta H, et al. Liver NK cells expressing TRAIL are toxic against self hepatocytes in mice. *Hepatology.* 2004;39:1321–1331.
 12. Ishiyama K, Ohdan H, Ohira M, Mitsuta H, Arihiro K, Asahara T. Difference in cytotoxicity against hepatocellular carcinoma between liver and periphery natural killer cells in humans. *Hepatology.* 2006;43:362–372.
 13. Ohira M, Ohdan H, Mitsuta H, et al. Adoptive transfer of TRAIL-expressing natural killer cells prevents recurrence of hepatocellular carcinoma after partial hepatectomy. *Transplantation.* 2006;82:1712–1719.
 14. Ohira M, Ishiyama K, Tanaka Y, et al. Adoptive immunotherapy with liver allograft-derived lymphocytes induces anti-HCV activity after liver transplantation in humans and humanized mice. *J Clin Invest.* 2009;119:3226–3235.
 15. Tashiro H, Ishiyama K, Ohira M, et al. Impact of adjuvant immunotherapy using liver allograft-derived lymphocytes on bacteremia in living-donor liver transplantation. *Transplantation.* 2011;92:575–580.
 16. Ohira M, Nishida S, Tryphonopoulos P, et al. Clinical-scale isolation of interleukin-2-stimulated liver natural killer cells for treatment of liver transplantation with hepatocellular carcinoma. *Cell Transplant.* 2012;21(7):1397–1406.
 17. Ortho Multicenter Transplant Study Group. A randomized clinical trial of OKT3 monoclonal antibody for acute rejection of cadaveric renal transplants. *N Engl J Med.* 1985;313:337–342.
 18. Cosimi AB, Colvin RB, Burton RC, et al. Use of monoclonal antibodies to T-cell subsets for immunologic monitoring and treatment in recipients of renal allografts. *N Engl J Med.* 1981;305:308–314.
 19. Yee C, Thompson JA, Byrd D, et al. Adoptive T cell therapy using antigen-specific CD8+ T cell clones for the treatment of patients with metastatic melanoma: in vivo persistence, migration, and antitumor effect of transferred T cells. *Proc Natl Acad Sci U S A.* 2002;99:16168–16173.
 20. Dorskali M, Tanaka Y, Ohira M, et al. Possibility of adoptive immunotherapy with peripheral blood-derived CD3(–)CD56+ and CD3+CD56+ cells for inducing antihepatocellular carcinoma and antihepatitis C virus activity. *J Immunother.* 2011;34:129–138.
 21. Leemhuis T, Wells S, Scheffold C, Etinger M, Negrin RS. A phase I trial of autologous cytokine-induced killer cells for the treatment of relapsed Hodgkin disease and non-Hodgkin lymphoma. *Biol Blood Marrow Transplant.* 2005;11:181–187.
 22. Takayama T, Sekine T, Makuuchi M, et al. Adoptive immunotherapy to lower postsurgical recurrence rates of hepatocellular carcinoma: a randomized trial. *Lancet.* 2000;356:802–807.
 23. Olioso P, Giancola R, di Riti M, Contento A, Accorsi P, Iacone A. Immunotherapy with cytokine induced killer cells in solid and hematopoietic tumours: a pilot clinical trial. *Hematol Oncol.* 2009;27:130–139.
 24. Shi M, Zhang B, Tang ZR, et al. Autologous cytokine-induced killer cell therapy in clinical trial phase I is safe in patients with primary hepatocellular carcinoma. *World J Gastroenterol.* 2004;10:1146–1151.
 25. Schmidt-Wolf IG, Finke S, Trojaneck B, et al. Phase I clinical study applying autologous immunological effector cells transfected with the interleukin-2 gene in patients with metastatic renal cancer, colorectal cancer and lymphoma. *Br J Cancer.* 1999;81:1009–1016.
 26. Filipovich AH, McGlave PB, Ramsay NK, Goldstein G, Warkentin PI, Kesey JH. Pretreatment of donor bone marrow with monoclonal antibody OKT3 for prevention of acute graft-versus-host disease in allogeneic histocompatible bone-marrow transplantation. *Lancet.* 1982;1:1266–1269.
 27. Herve P, Cahn JY, Flesch M, et al. Successful graft-versus-host disease prevention without graft failure in 32 HLA-identical allogeneic bone marrow transplantations with marrow depleted of T cells by monoclonal antibodies and complement. *Blood.* 1987;69:388–393.
 28. Collins RH Jr, Goldstein S, Giralt S, et al. Donor leukocyte infusions in acute lymphocytic leukemia. *Bone Marrow Transplant.* 2000;26:511–516.
 29. Horowitz MM, Gale RP, Sondel PM, et al. Graft-versus-leukemia reactions after bone marrow transplantation. *Blood.* 1990;75:555–562.
 30. Chang TW, Kung PC, Gingras SP, Goldstein G. Does OKT3 monoclonal antibody react with an antigen-recognition structure on human T cells? *Proc Natl Acad Sci U S A.* 1981;78:1805–1808.
 31. Chatenoud L, Ferran C, Legendre C, et al. In vivo cell activation following OKT3 administration. Systemic cytokine release and modulation by corticosteroids. *Transplantation.* 1990;49:697–702.
 32. van Wauwe JP, de Mey JR, Goossens JG. OKT3: a monoclonal anti-human T lymphocyte antibody with potent mitogenic properties. *J Immunol.* 1980;124:2708–2713.
 33. Guo JT, Bichko VV, Seeger C. Effect of alpha interferon on the hepatitis C virus replicon. *J Virol.* 2001;75:8516–8523.
 34. Tanabe Y, Sakamoto N, Enomoto N, et al. Synergistic inhibition of intracellular hepatitis C virus replication by combination of ribavirin and interferon-alpha. *J Infect Dis.* 2004;189:1129–1139.
 35. Yokota T, Sakamoto N, Enomoto N, et al. Inhibition of intracellular hepatitis C virus replication by synthetic and vector-derived small interfering RNAs. *EMBO Rep.* 2003;4:602–608.
 36. Dalle JH, Dardari R, Menezes J, Cordeiro P, champagne MA, Duval M. Binding of thymoglobulin to natural killer cells leads to cell activation and interferon-gamma production. *Transplantation.* 2009;87:473–481.
 37. Rettinger E, Meyer V, Kreyenberg H, et al. Cytotoxic capacity of IL-15-stimulated cytokine-induced killer cells against human acute myeloid leukemia and rhabdomyosarcoma in humanized preclinical mouse models. *Front Oncol.* 2012;2:1–12.
 38. Gaber AO, Monaco AP, Russell JA, Lebranchu Y, Mohty M. Rabbit antithymocyte globulin (thymoglobulin): 25 years and new frontiers in solid organ transplantation and haematology. *Drugs.* 2010;70:691–732.
 39. Bonanno G, Iudicone P, Mariotti A, et al. Thymoglobulin, interferon-gamma and interleukin-2 efficiently expand cytokine-induced killer (CIK) cells in clinical-grade cultures. *J Transl Med.* 2010;8:129.
 40. Bryceson YT, March ME, Barber DF, Ljunggren HG, Long EO. Cytokine granule polarization and degranulation controlled by different receptors in resting NK cells. *J Exp Med.* 2005;202:1001–1012.
 41. Penack O, Fischer L, Stroux A, et al. Serotherapy with thymoglobulin and alemtuzumab differentially influences frequency and function of natural killer cells after allogeneic stem cell transplantation. *Bone Marrow Transplant.* 2008;41:377–383.
 42. Stauch D, Dernier A, Sarmiento Marchese E, et al. Targeting of natural killer cells by rabbit antithymocyte globulin and campath-1H: similar effects independent of specificity. *PLoS One.* 2009;4:e4709.
 43. Clynes RA, Towers TL, Presta LG, Ravetch JV. Inhibitory Fc receptors modulate in vivo cytotoxicity against tumor targets. *Nat Med.* 2000;6:443–446.

Attenuation of Portal Hypertension by Continuous Portal Infusion of PGE1 and Immunologic Impact in Adult-to-Adult Living-Donor Liver Transplantation

Takashi Onoe,^{1,2,3} Yuka Tanaka,¹ Kentaro Ide,¹ Kouhei Ishiyama,¹ Akihiko Oshita,¹ Tsuyoshi Kobayashi,¹ Hironobu Amano,¹ Hirotaka Tashiro,¹ and Hideki Ohdan¹

Background. Small-for-size syndrome remains the greatest limiting factor of expanding segmental liver transplantation from living donors. Portal hyperperfusion is considered to substantially contribute to small-for-size syndrome. We investigated the impact of continuous portal infusion of prostaglandin E1 (PGE1) on small-for-size grafts (SFSGs) in adult-to-adult living-donor liver transplantation (LDLT).

Methods. From July 2003 to December 2009, LDLT was performed in 122 patients. We introduced continuous portal infusion of PGE1 to five SFSG patients (PG group) from November 2007 to December 2009 and retrospectively compared them with a historical control group of eight relevant SFSG patients without PGE1 infusion (non-PG group) from July 2003 to October 2007 to determine the safety and efficacy of continuous PGE1 portal infusion for SFSGs. Splenectomy cases were excluded from analysis.

Results. The PG group demonstrated significantly lower postoperative portal pressure than the non-PG group. Moreover, the PG group demonstrated significantly improved liver function in the early posttransplantation period and significantly better recovery from hyperammonemia at 1 week after transplantation and from hyperbilirubinemia in the late posttransplantation period. Overall survival was significantly better in the PG group than in the non-PG group. Three patients in the non-PG group died of rejection-related reasons. Interestingly, immunomonitoring assay revealed that antidonor immune responses were significantly accelerated in the non-PG group compared with the PG group after LDLT. In contrast, the PG group showed well-suppressed antidonor immune responses.

Conclusion. Continuous portal infusion of PGE1 for SFSG attenuated portal hypertension, improved graft function, and suppressed antidonor immune responses, resulting in better survival.

Keywords: Living-donor liver transplantation, Small-for-size graft, Portal hypertension, Alloimmune response, Prostaglandin E1.

(*Transplantation* 2013;95: 1521–1527)

This work was supported by a Grant-in-Aid for Young Scientists (Start-up) (2189015500) and a Grant-in-Aid for Young Scientists (B) (23791486) from the Japan Society for the Promotion of Science.

The authors declare no conflicts of interest.

¹ Department of Gastroenterological and Transplant Surgery, Applied Life Sciences, Institute of Biomedical & Health Sciences, Hiroshima University, Hiroshima, Japan.

² Department of Clinical Research, National Hospital Organization Kure Medical Center/Chugoku Cancer Center, Hiroshima, Japan.

³ Address correspondence to Takashi Onoe, M.D., Ph.D., Department of Gastroenterological and Transplant Surgery, Applied Life Sciences, Institute of Biomedical & Health Sciences, Hiroshima University, 1-2-3 Kasumi, Minami-ku, Hiroshima City, Hiroshima 734-8551, Japan.

E-mail: tonoemd@gmail.com

T.O. and H.O. participated in the research design, performance of the research, and writing of the article. Y.T. participated in data analysis. K.I., K.I., A.O., T.K., H.A., and H.T. participated in the performance of the research.

Supplemental digital content (SDC) is available for this article. Direct URL citations appear in the printed text, and links to the digital files are provided in the HTML text of this article on the journal's Web site (www.transplantjournal.com).

Received 26 June 2012. Revision requested 13 July 2012.

Accepted 8 March 2013.

Copyright © 2013 by Lippincott Williams & Wilkins

ISSN: 0041-1337/13/9512-1521

DOI: 10.1097/TP.0b013e31829150a4

Segmental liver transplantation based on cadaveric splitting or living-donor liver transplantation (LDLT) has been developed for treating patients with end-stage liver disease. It is also a means of overcoming organ shortage and wait-list mortality. However, small-for-size syndrome (SFSS) remains the greatest limiting factor for the expansion of segmental liver transplantation from either cadaveric or living donors (1, 2). If the volume of the engrafted liver is considerably less than the standard liver weight in patients with end-stage liver disease who are undergoing partial liver transplantation, excessive portal venous inflow might cause early portal hypertension (3, 4) and increased morbidity and mortality due to SFSS (5). Previous data have suggested that, in recipients of adult-to-adult LDLT, one of the most challenging tasks is to match a good size graft. Emphasis has more recently been placed not only on the evaluation of the ratio between donor and recipient liver volume but also on the degree of portal hypertension and the stage of liver disease in the recipient, consistent with the result in a pig model (6–8). Therefore, the importance of portal pressure during LDLT is now recognized.

We have demonstrated that continuous portal infusion of prostaglandin E1 (PGE1) considerably improved the congestion

of the residual liver after extended hepatectomy in a rat model (9). Based on this result, we applied a continuous portal infusion of PGE1 for small-for-size grafts (SFSGs) in LDLT in the clinical setting.

We here investigated the clinical significance of controlling portal pressure by continuous portal infusion of PGE1 after surgery in LDLT with SFSGs, focusing on portal decompression, postoperative liver function, survival, and the antidonor immune status of the recipient retrospectively.

RESULTS

Patients' Demographic and Clinical Characteristics

Thirteen patients receiving SFSGs were retrospectively analyzed in this study. The patients' demographic and clinical characteristics are shown in Table 1. Of these patients, five received a continuous portal injection of PGE1 after transplantation (PG group) from November 2007 to December 2009 (era 2), whereas eight were historical controls from July 2003 to October 2007 (era 1) without PGE1 infusion (non-PG group). There was no significant difference in age or underlying disease between the two groups. Preoperative examination of the hepatic reserve showed similar Child-Pugh scores

(PG group, 10.0±0.71; non-PG group, 9.00±0.83). Patients' model for end-stage liver disease scores, which were used as recipient severity indices, was similar between groups (mean [range], 16.8 [8–30] and 15.1 [9–28], respectively). Portal vein pressure (PVP) at laparotomy was also similar between the two groups (25.2 [17–34] and 20.3 [17–24] mm Hg, respectively). Concerning the graft, one patient in each group showed minimal fatty metamorphosis (<0.1%) on histology and there was no significant difference in graft-to-recipient body weight ratio (GRWR) between the two groups (0.680 [0.63–0.71] and 0.655 [0.51–0.72], respectively).

Furthermore, factors related to surgical invasiveness in those two groups, such as hemorrhage level, operation time, and graft ischemia duration, were similar. No donor had donor-specific antigens, and there was no difference in the number of human leukocyte antigen (HLA) mismatch (Table 1). Three donor candidates in each group underwent liver biopsy. Among them, one in each group showed minimal fatty metamorphosis (<0.1%) on histology. Of note, three of five patients in the PGE1 group and three of eight patients in the non-PGE1 group received right-lobe grafts. All patients receiving right lobes in both groups had grafts with middle hepatic vein (MHV) tributaries more than 5 mm in diameter, and all draining tributaries were reconstructed with the

TABLE 1. Patients' demographic and clinical characteristics

Variables	PG group (n=5)	Non-PG group (n=8)	P
Recipient factors			
Age, years	56.4±3.4	57.9±4.4	0.510 ^a
Gender, male/female	5/0	3/5	0.075 ^b
Child-Pugh score	10.0±1.6	9.0±1.9	0.325 ^a
MELD score	16.8±8.2	15.1±5.8	0.702 ^a
PVP, mm Hg, at laparotomy	25.2±6.1	20.9±3.0	0.199 ^a
Disease background			
Viral hepatitis (B/C)	1/2	1/5	>0.999 ^b
Alcoholic	1	1	>0.999 ^b
Acute hepatic failure	1	0	0.385 ^b
Cholestatic disease	0	1	>0.999 ^b
Donor factors			
Age, years	26.2±3.3	33.3±10.5	0.113 ^a
Gender, male/female	0/5	5/3	0.075 ^b
Graft factors			
Graft type, right/left	3/2	3/5	0.592 ^b
GRWR, %	0.68±0.03	0.66±0.09	0.510 ^a
Reconstruction of hepatic vein	3	3	0.592 ^b
HLA class I mismatch	1.20±0.49	1.63±0.23	0.453 ^a
HLA class II mismatch	0.60±0.24	1.00±0.00	—
DSA	0	0	—
Surgical factors			
Operation time, min	781.0±153.6	755.9±106.0	0.758 ^a
Bleeding, mL	5322.0±2295.3	5751.4±6371.2	0.866 ^a
Total ischemia time, min	117.0±35.5	118.9±31.4	0.925 ^a

^a Unpaired *t* test with Welch's correction.

^b Fisher's exact test.

DSA, donor-specific antibody; HLA, human leukocyte antigen; GRWR, graft-to-recipient body weight ratio; MELD, model for end-stage liver disease; PVP, portal vein pressure.

recipients' native MHV trunk as reported previously (10). There was no thrombosis in those reconstructed tributaries after surgery. One patient of each group had grafts with inferior right hepatic vein, which were reconstructed using direct anastomosis to inferior vena cava in each case.

Continuous PGE1 Infusion Attenuated Portal Hypertension After Reperfusion in SFSGs

After laparotomy, we inserted a catheter from the mesenteric vein to the distal side of the portal vein and measured the PVP during the operation. All patients exhibited portal hypertension during laparotomy. In the PG group, after reflow of the portal and hepatic veins was confirmed, we started PGE1 infusion into the portal vein through a catheter. Continuous infusion of PGE1 resulted in a significant reduction of PVP at the time of abdominal closure in the PG group compared with the non-PG group ($P < 0.005$; Fig. 1A). The mean PVP at the time of abdominal closure was 15.4 ± 1.17 mm Hg in the PG group and 20.5 ± 1.47 mm Hg in the non-PG group (Fig. 1A). Furthermore, the PVP ratio at the end of the operation, compared with that at laparotomy, showed effective portal decompression in the PG group and non-PG group, respectively (0.62 ± 0.04 vs. 0.99 ± 0.06 ; $P < 0.001$; Fig. 1B). Importantly, none of the patients in the PG group developed hypoperfusion after PGE1 portal infusion.

Clinical Course of Graft Liver Function

Graft liver function markers, including serum transaminases, arterial ketone body ratio (AKBR), ammonia, and total bilirubin, after surgery were compared between the PG group and the non-PG group.

Elevated serum aspartate aminotransferase (AST) and alanine aminotransferase (ALT) levels were significantly attenuated in the PG group compared with the non-PG group on days 1 and 2 (Fig. 2). Similarly, the AKBR, which reflects the hepatic mitochondrial redox state and is considered an accurate index of the functional reserve of the graft liver after transplantation, was significantly higher in the PG group. However, these values became comparable between the two groups after day 3. Strikingly, significantly better recovery from hyperammonemia was seen in the PG group for 1 week after surgery. The serum total bilirubin level was comparable between the two groups by day 28 after LDLT. Nonetheless, hyperbilirubinemia was significantly improved in the PG group after day 28 but remained prolonged in the non-PG group. These results indicate that continuous infusion of PGE1 significantly improved the liver function after LDLT with SFSGs.

Complications and Prognosis

In the PG group, no complications associated with the portal vein catheter were observed after surgery (e.g., post-removal bleeding, catheter infection, or portal thrombosis). One patient in the non-PG group and none in the PG group developed SFSS. Postoperative death occurred in 5 patients of the non-PG group and in none in the PG group. In the non-PG group, the 1- and 2-year survival rates were 62.5% and 37.5%, respectively. In contrast, in the PG group, the 1- and 2-year survival rates were both 100%, a difference that was statistically significant ($P < 0.05$; Fig. 3). The main causes of death in the non-PG group were graft dysfunction, rejection, and subsequent infection as well as bacterial sepsis after biliary stenosis. No patients in the PG group had a

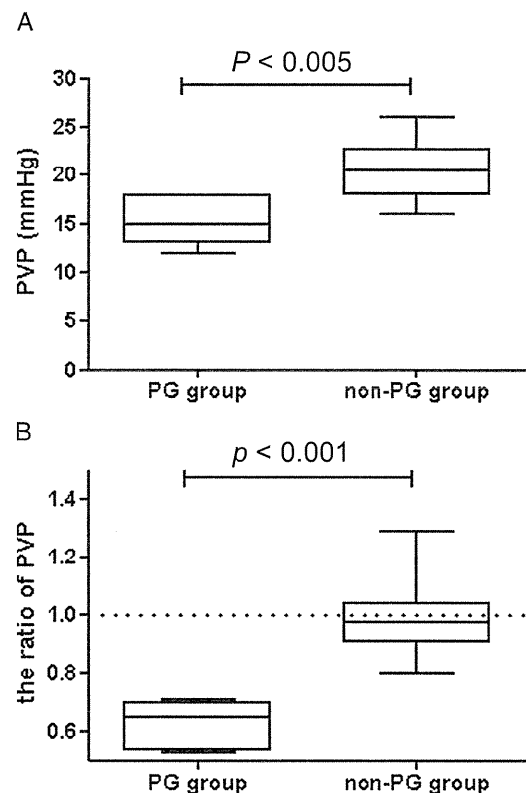


FIGURE 1. PVP value at the end of the operation (A) and ratio of PVP at the end of the operation to that at laparotomy (B) in the PG group and the non-PG group. An unpaired *t* test with Welch's correction was used to compare PVP and the ratio of PVP between the PG group and the non-PG group. The box plot represents the 25th to 75th percentiles, the dark line is the median, and the extended bars represent the 10th to the 90th percentiles. * $P < 0.05$; *** $P < 0.001$. PVP, portal vein pressure.

rejection episode. Rejection was diagnosed by liver biopsy and histologic findings showed features of SFSG and/or portal hypertension with rejection (see Figure S1, SDC, <http://links.lww.com/TP/A807>). The 2-year survival of SFSG patients (non-PG group) in era 1 (July 2003 to October 2007) was significantly worse than that of the non-SFSG patients in the same period (37.5% vs. 77.8%; $P < 0.05$), whereas the 2-year survival of SFSG patients (PG group) in era 2 (November 2007 to December 2009) was not statistically different from that of the non-SFSG patients in the same period (100% vs. 77.1%). Of note, the 2-year survival of non-SFSG patients was similar between eras 1 and 2 (Fig. 4).

Estimation of Immunosuppressive Status After Surgery by Using the Carboxyfluorescein Diacetate Succinimidyl Ester-Mixed Lymphocyte Reaction Assay

Because the main cause of death in 3 patients in the non-PG group was related to rejection, we retrospectively analyzed the immunosuppressive postoperative status of both groups. All patients and their donors consented to be

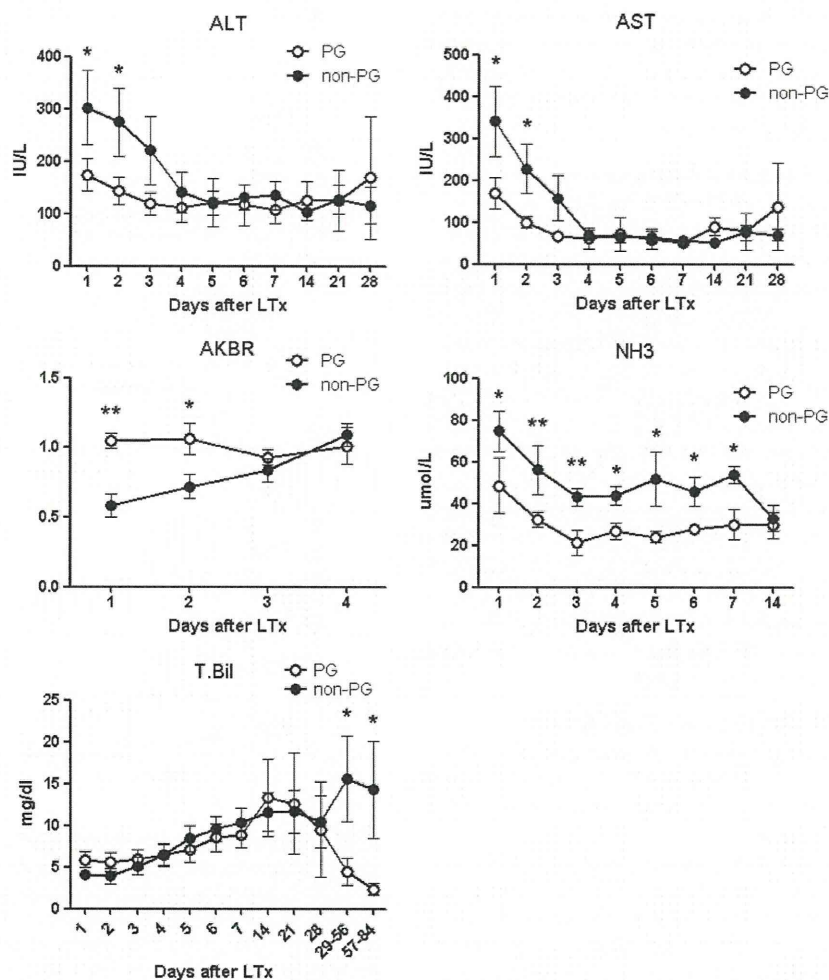


FIGURE 2. Liver function tests (ALT, AST, AKBR, NH₃, and T.Bil) of patients with (PG group; open circle) or without PGE1 portal infusion (non-PG group; closed circle) after LDLT. Data are mean±SEM for individual groups. An unpaired *t* test with Welch's correction was used to compare each of the indicated parameters between the PG group and the non-PG group. **P*<0.05; ****P*<0.01. AKBR, arterial ketone body ratio; ALT, alanine aminotransferase; AST, aspartate aminotransferase; LDLT, living-donor liver transplantation; LTx, liver transplantation; NH₃, ammonia; T.Bil, total bilirubin.

subjected to a mixed lymphocyte reaction (MLR) assay with the carboxyfluorescein diacetate succinimidyl ester (CFSE) labeling technique. In all five patients of the PG group, suppressed CD8⁺ T-cell proliferation, which is defined as a stimulation index (SI)<2, was observed in the antidonor MLR assay (i.e., a hyporesponse to donor; mean SI, 1.10±0.13; Fig. 4A). The mean percentage of CD25⁺ cells among the proliferating CD8⁺ T cells, which are activated cytotoxic T cells, was 9.24±5.93 (Fig. 4B). In contrast, in five of the eight patients in the non-PG group, accelerated CD8⁺ T-cell proliferation was observed in the antidonor MLR assay (i.e., a hyperresponse to donor; mean SI, 2.85±0.50; Fig. 4A). Furthermore, the mean percentage of CD25⁺ cells among the proliferating CD8⁺ T cells was 63.82±8.63 (Fig. 4B). These differences between the two groups were significant. Of note, three patients in the non-PG group who showed high antidonor response (i.e., SI of CD8⁺ T cells>3) required steroid pulse treatment and died of graft dysfunction or infection after rejection. Two patients who

showed a relatively high antidonor response (i.e., SI of CD8⁺ T cells>2) required an increase in immunosuppressant doses. These results indicated that patients with SFSGs show accelerated antidonor immune responses and that continuous portal infusion of PGE1 suppressed this type of antidonor immune response.

DISCUSSION

Various approaches to controlling excessive portal flow and pressure have been proposed, such as dual grafting to increase graft volume (11, 12). Although this concept is simple, it requires two healthy living donors and involves increased risk to donors. Another approach is portal decompression with a portosystemic shunt (13, 14) or splenic artery manipulation, including splenectomy, embolization, and ligation (15–17). This method is more favored in terms of availability and donor risk. Nonetheless, there is

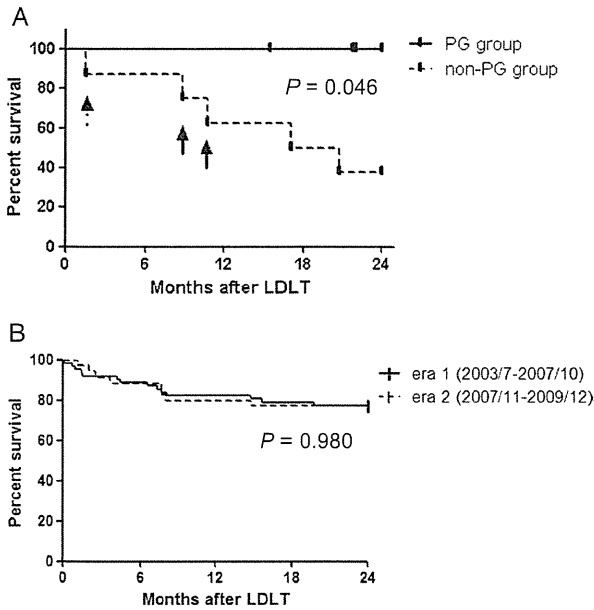


FIGURE 3. A, Kaplan–Meier patient survival curves of patients with (PG group; n=5; solid line) or without PGE1 portal infusion after LDLT (non-PG group; n=8; dotted line). In the non-PG group, the 1- and 2-year survival rates were 62.5% and 37.5%, respectively. In the PG group, the 1- and 2-year survival rates were both 100%, a difference that was statistically significant. * $P < 0.05$. Dashed arrow represents a patient’s death due to SFSS and rejection followed by infection, and solid arrows represent patients’ death due to rejection-related reasons. B, Kaplan–Meier patient survival curves of non-SFSG patients in era 1 (from July 2003 to October 2007; n=62; solid line) or era 2 (from November 2007 to December 2009; n=35; dotted line). In the era 1 and era 2 groups, the 2-year survival rate was 77.4% and 77.1%, respectively, with no statistical difference ($P = 0.980$). ABO-incompatible cases and splenectomy cases were excluded from analysis. LDLT, living-donor liver transplantation; PGE1, prostaglandin E1; SFSS, small-for-size graft; SFSS, small-for-size syndrome.

a considerable risk of infection in splenectomy or splenic artery ligation (18). Moreover, significantly higher mortality was observed in patients who had splenectomy mainly due to septic complications in liver transplantation (19, 20). In fact, we experienced one SFSG case in which the patient died of sudden sepsis without any primary focus 4 years after transplantation with splenectomy. Therefore, another method to control portal pressure and preserve the spleen is likely more preferable.

We have reported that portal administration of PGE1, a vasodilator of vessels containing smooth muscle (21, 22), prevented congestion of residual liver tissues in a rat extended hepatectomy model. In this study, we tried various vasodilators; however, residual liver congestion after hepatectomy was improved only by continuous portal infusion of PGE1. We also tried systemic continuous venous infusion of PGE1 at the same dose, but this was not effective. This suggests the therapeutic potential of portal PGE1 injection to prevent portal hypertension after LDLT with SFSGs.

We translated this method to adult LDLT with SFSGs, and portal infusion of PGE1 successfully reduced PVP, resulting

in improved liver graft function in both early and late posttransplantation periods. This result was unexpected because the portal infusion of PGE1 was given for only the first week yet improved the long-term survival of recipients.

We used a CFSE-MLR assay to objectively evaluate the antidonor responses of the recipients (23, 24). The lack of CD8⁺ and CD25⁺ T-cell proliferation in antidonor MLR reflects the suppression of the antidonor response. In this immunologic investigation, all patients given the continuous portal infusion of PGE1 showed a well-suppressed response of the antidonor CD8⁺ T cells (Fig. 4). In contrast, surprisingly, patients without the PGE1 treatment showed

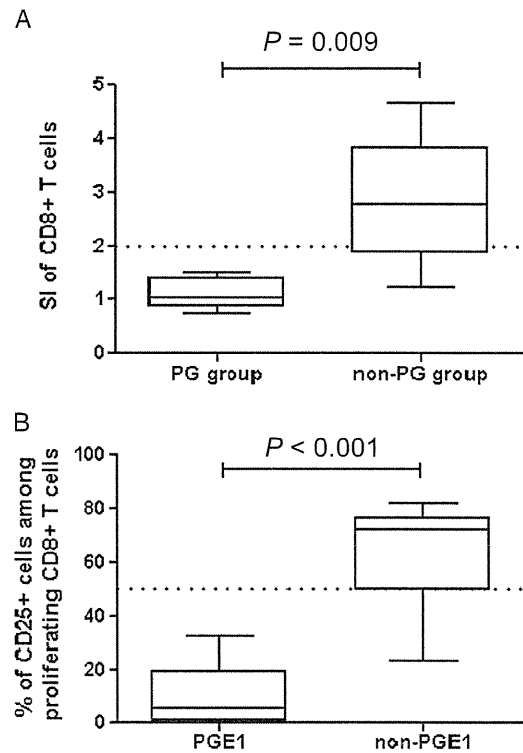


FIGURE 4. SIs of CD8⁺ T-cell subsets in the antidonor MLR assay of patients in the PG group (n=5) and the non-PG group (n=8) on the third to fourth weeks after transplantation (A) and percentage of CD25⁺ cells among proliferating CD8⁺ T cells in patients of the PG group and the non-PG group (B). CD8⁺ T-cell proliferation and their SIs were quantified as follows. The number of division precursors was extrapolated from the number of daughter cells of each division, and the number of mitotic events in each of the CD4⁺ and CD8⁺ T-cell subsets was calculated. Using these values, the mitotic index was calculated by dividing the total number of mitotic events by the total number of precursors. The SIs of the allogeneic combinations were calculated by dividing the mitotic index of a particular allogeneic (self to donor) combination by that of the self-control. An unpaired *t* test with Welch’s correction was used to compare the SI and percentage of CD25⁺ cells between the PG group and the non-PG group. The box plot represents the 25th to 75th percentiles, the dark line is the median, and the extended bars represent the 10th to the 90th percentiles. ** $P < 0.01$; *** $P < 0.001$. MLR, mixed lymphocyte reaction; SI, stimulation index.

an accelerated response of antidonor CD8⁺ T cells despite the use of the same immunosuppressive protocol. Therefore, SFSG likely accelerated the antidonor response, enhanced rejection, and might result in a worse survival rate, although SFSS is multifactorial in nature. This finding is consistent with the results in an animal model (25) and our preliminary data using mouse model (data not shown). To our knowledge, this is the first clinical report to state that SFSG may accelerate antidonor immune responses in LDLT.

We previously reported that liver sinusoidal endothelial cells (LSECs) of grafts induce allospecific immunotolerance by suppressing reactive T cells through Fas ligand and/or PD-L1 signaling (26–28). Based on this concept, one possible mechanism is that the sinusoidal structure and LSECs could be damaged by portal hypertension and lose their tolerogenicity, resulting in accelerated antidonor immunoresponse and rejection. This interpretation is consistent with that of previous reports stating that portal hypertension disrupts sinusoids and LSECs in the liver (8). Another possibility is antirejection and/or the anti-inflammatory effect of PGE1 itself. It has been reported that PGE1 could prevent ischemia-reperfusion injury by inducing heat shock protein (29) or by inhibition of neutrophil adherence (30). It has been also reported that administration of PGE1 could prevent and suppress the rejection process in heart transplantation (31) and in renal transplantation (32). Furthermore, it has been reported that PGE1 protects human LSECs from apoptosis, which is consistent with our findings (33).

The main limitation of our study is its retrospective nature. Another limitation is the relatively small number of patients in each subgroup analyzed, although the background characteristics of each group and the survival rates of non-SFSG patients were similar. A randomized study is ideal; however, performing a prospective randomized study for this approach is difficult because of the high mortality of SFSG patients without PGE1 perfusion, as shown in Results.

In conclusion, continuous infusion of PGE1 is suggested to be useful in improving SFSG function and survival after LDLT. Improved understanding of underlying mechanisms may have important implications for clinical managements such as antirejection therapy or preventing ischemia-reperfusion injury in liver transplantation with SFSGs.

MATERIALS AND METHODS

Patients

From July 2003 to December 2009, LDLT was performed on 122 adult patients with end-stage liver disease. We introduced continuous portal infusion of PGE1 to five patients with SFSGs that exhibited a GRWR less than 0.72% from November 2007 to December 2009 (era 2). These patients (PG group) were the subjects of this retrospective case-control study. We compared them with a historical group of eight relevant patients who received SFSG without PGE1 infusion (non-PG group) from July 2003 to October 2007 (era 1) to determine the safety and efficacy of continuous PGE1 portal infusion for SFSGs. Because we introduced the portal infusion of PGE1 in November 2007, all patients with SFSGs in era 2 received PGE1 infusion. One SFSG case with splenectomy in era 1 was excluded from this study. The study protocol was approved by the ethics committee of Hiroshima University, and all patients provided informed consent before surgery. None of the patients receiving PGE1 portal infusion showed clinical evidence of insertion site infection or bleeding after catheter removal throughout the follow-up period.

Operation, PVP Measurement, and Continuous Portal Infusion of PGE1

The graft-harvesting technique, recipient surgery, perioperative recipient management, and immunosuppression regimens were conducted as described previously with minor modifications (34, 35). In brief, the right lobe without the MHV or the left lobe with the MHV was harvested from the donor as follows. Before parenchymal transection, the right or left lobe was mobilized and the short hepatic veins were transected. For the right lobe, during parenchymal transection, the major right tributaries of the MHV were clamped using a vascular clip and then transected. After hepatectomy, ex vivo perfusion of the graft was performed through the portal vein. The initial perfusate was saline solution (500 mL); then, the University of Wisconsin solution (1000 mL) was used as the perfusate.

To measure the PVP in the recipient during the operation, an 18G catheter was inserted from the mesenteric vein to the portal vein after laparotomy (36). The implantation was performed after total hepatectomy. The graft vein was anastomosed to the equivalent vein of the recipient in an end-to-end fashion. Thereafter, the graft was reperfused before microsurgical reconstruction of the hepatic artery (end-to-end anastomosis of the graft hepatic artery to the recipient hepatic artery). The bile duct of the graft liver was anastomosed in an end-to-end fashion to the recipient's common hepatic bile duct. In the non-PG group, the portal catheter was removed at the time of abdominal closure. In the PG group, PGE1 was administered through a portal catheter at the graft portal reflow. PGE1 was continuously administered for 1 week ($0.01 \text{ g kg}^{-1} \text{ min}^{-1}$) and then the catheter was noninvasively removed. AST, ALT, serum bilirubin, serum ammonia, and AKBK levels were measured as liver function indices. The initial immunosuppressive regimen consisted of tacrolimus and steroids. Doppler ultrasonography and computed tomographic scans were routinely performed daily and biweekly, respectively.

Immunosuppression was initiated with a protocol based on tacrolimus (Prograf; Astellas Pharma, Tokyo, Japan) and methylprednisolone. Methylprednisolone was withdrawn gradually according to the protocol. The dose of tacrolimus was controlled according to blood concentration and adjusted daily. The target trough level was set at 15 ng/mL for 2 weeks and 10 ng/mL for another 2 weeks. Continuous venous infusion of heparin for therapeutic heparinization was routinely done to prevent thrombosis, which was monitored using coagulation tests. Rejection was diagnosed and proven by biopsy histologically and MLR assay. Patients were followed for 2 years after LDLT, and survival was defined as the period between LDLT and death.

Immune Monitoring by In Vitro CFSE-MLR Assay

CFSE-MLR was routinely performed to evaluate the recipient's antidonor immune response 2 to 4 weeks after surgery.

For CFSE-MLR, peripheral blood mononuclear cells prepared from the blood of the recipients (autologous control), donors, and healthy volunteers with the same blood type as the donors (third-party control) for use as the stimulator cells were irradiated with 30 Gy. Those obtained from the recipients for use as the responder cells were labeled with 5 mM CFSE (Molecular Probes, Eugene, OR), as described previously (24). The stimulator and responder cells (2×10^6 each) were incubated in 24-well flat-bottomed plates in a total volume of 2 mL culture medium at 37°C under 5% CO₂ for 5 days. After culture for MLR, CD4⁺ and CD8⁺ T-cell proliferation, CD25 expression of proliferating T-cell subsets and SI were quantified by flow cytometry as described previously (37, 38) and described in the SDC Materials and Methods in detail (see <http://links.lww.com/TP/A807>).

Statistical Analysis

Statistical analysis and comparisons were performed using PRISM version 4.0 (GraphPad, San Diego, CA). Data are expressed as mean±SEM. An unpaired *t* test with Welch's correction was used to compare groups. *P* values <0.05 were considered statistically significant.

ACKNOWLEDGMENTS

This work was carried out at the Analysis Center of Life Science, Natural Science Center for Basic. The authors thank Dr. Kouji Arihiro for critical suggestions of histological findings.

REFERENCES

- Gonzalez HD, Liu ZW, Cashman S, et al. Small for size syndrome following living donor and split liver transplantation. *World J Gastrointest Surg* 2010; 2: 389.
- Dahm F, Georgiev P, Clavien PA. Small-for-size syndrome after partial liver transplantation: definition, mechanisms of disease and clinical implications. *Am J Transplant* 2005; 5: 2605.
- Smyrniotis V, Kostopanagioutou G, Kondi A, et al. Hemodynamic interaction between portal vein and hepatic artery flow in small-for-size split liver transplantation. *Transpl Int* 2002; 15: 355.
- Yagi S, Iida T, Taniguchi K, et al. Impact of portal venous pressure on regeneration and graft damage after living-donor liver transplantation. *Liver Transpl* 2005; 11: 68.
- Man K, Fan ST, Lo CM, et al. Graft injury in relation to graft size in right lobe live donor liver transplantation: a study of hepatic sinusoidal injury in correlation with portal hemodynamics and intragraft gene expression. *Ann Surg* 2003; 237: 256.
- Ogura Y, Hori T, El Moghazy WM, et al. Portal pressure <15 mm Hg is a key for successful adult living donor liver transplantation utilizing smaller grafts than before. *Liver Transpl* 2010; 16: 718.
- Botha JF, Langnas AN, Campos BD, et al. Left lobe adult-to-adult living donor liver transplantation: small grafts and hemiportal shunts in the prevention of small-for-size syndrome. *Liver Transpl* 2010; 16: 649.
- Asakura T, Ohkohchi N, Orii T, et al. Portal vein pressure is the key for successful liver transplantation of an extremely small graft in the pig model. *Transpl Int* 2003; 16: 376.
- Mitsuta H, Ohdan H, Fudaba Y, et al. Near-infrared spectroscopic analysis of hemodynamics and mitochondrial redox in right lobe grafts in living-donor liver transplantation. *Am J Transplant* 2006; 6: 797.
- Tashiro H, Ohdan H, Itamoto T, et al. Using recipient's middle hepatic vein for drainage of the right paramedian sector in right liver graft. *Transplantation* 2008; 86: 1565.
- Chen Z, Yan L, Li B, et al. Prevent small-for-size syndrome using dual grafts in living donor liver transplantation. *J Surg Res* 2009; 155: 261.
- Song GW, Lee SG, Hwang S, et al. Dual living donor liver transplantation with ABO-incompatible and ABO-compatible grafts to overcome small-for-size graft and ABO blood group barrier. *Liver Transpl* 2010; 16: 491.
- Boillot O, Delafosse B, Mechet I, et al. Small-for-size partial liver graft in an adult recipient; a new transplant technique. *Lancet* 2002; 359: 406.
- Troisi R, Ricciardi S, Smeets P, et al. Effects of hemi-portocaval shunts for inflow modulation on the outcome of small-for-size grafts in living donor liver transplantation. *Am J Transplant* 2005; 5: 1397.
- Shimada M, Ijichi H, Yonemura Y, et al. The impact of splenectomy or splenic artery ligation on the outcome of a living donor adult liver transplantation using a left lobe graft. *Hepatogastroenterology* 2004; 51: 625.
- Umeda Y, Yagi T, Sadamori H, et al. Effects of prophylactic splenic artery modulation on portal overperfusion and liver regeneration in small-for-size graft. *Transplantation* 2008; 86: 673.
- Yoshizumi T, Taketomi A, Soejima Y, et al. The beneficial role of simultaneous splenectomy in living donor liver transplantation in patients with small-for-size graft. *Transpl Int* 2008; 21: 833.
- Balci D, Taner B, Dayangac M, et al. Splenic abscess after splenic artery ligation in living donor liver transplantation: a case report. *Transplant Proc* 2008; 40: 1786.
- Samimi F, Irish WD, Eghtesad B, et al. Role of splenectomy in human liver transplantation under modern-day immunosuppression. *Dig Dis Sci* 1998; 43: 1931.
- Neumann UP, Langrehr JM, Kaisers U, et al. Simultaneous splenectomy increases risk for opportunistic pneumonia in patients after liver transplantation. *Transpl Int* 2002; 15: 226.
- Iwata K, Shimazu M, Wakabayashi G, et al. Intraportal perfusion of prostaglandin E1 attenuates hepatic postischaemic microcirculatory impairments in rats. *J Gastroenterol Hepatol* 1999; 14: 634.
- Asanuma Y, Sato T, Kato T, et al. Continuous arterial infusion of prostaglandin E(1) via the superior mesenteric artery in the treatment of postoperative liver failure. *Ther Apher* 2002; 6: 89.
- Paramore CG, Turner DA, Madison RD. Fluorescent labeling of dissociated fetal cells for tissue culture. *J Neurosci Methods* 1992; 44: 7.
- Tanaka Y, Ohdan H, Onoe T, et al. Low incidence of acute rejection after living-donor liver transplantation: immunologic analyses by mixed lymphocyte reaction using a carboxyfluorescein diacetate succinimidyl ester labeling technique. *Transplantation* 2005; 79: 1262.
- Dirsch O, Li J, He Q, et al. Induction of rejection after small-for-size liver transplantation: size matters. *J Invest Surg* 2008; 21: 288.
- Onoe T, Ohdan H, Tokita D, et al. Liver sinusoidal endothelial cells have a capacity for inducing nonresponsiveness of T cells across major histocompatibility complex barriers. *Transpl Int* 2005; 18: 206.
- Onoe T, Ohdan H, Tokita D, et al. Liver sinusoidal endothelial cells tolerize T cells across MHC barriers in mice. *J Immunol* 2005; 175: 139.
- Tokita D, Shishida M, Ohdan H, et al. Liver sinusoidal endothelial cells that endocytose allogeneic cells suppress T cells with indirect allospecificity. *J Immunol* 2006; 177: 3615.
- Matsuo K, Togo S, Sekido H, et al. Pharmacologic preconditioning effects: prostaglandin E1 induces heat-shock proteins immediately after ischemia/reperfusion of the mouse liver. *J Gastrointest Surg* 2005; 9: 758.
- Natori S, Fujii Y, Kurosawa H, et al. Prostaglandin E1 protects against ischemia-reperfusion injury of the liver by inhibition of neutrophil adherence to endothelial cells. *Transplantation* 1997; 64: 1514.
- Assaad A. Posttransplantation management of the newborn and the immunosuppressive role of prostaglandin E1. *J Heart Lung Transplant* 1993; 12: S191.
- Campbell D Jr, Wiggins R, Kunkel S, et al. Constant intrarenal infusion of PGE1 into a canine renal transplant using a totally implantable pump. *Transplantation* 1984; 38: 209.
- Yang H, Majno P, Morel P, et al. Prostaglandin E(1) protects human liver sinusoidal endothelial cell from apoptosis induced by hypoxia reoxygenation. *Microvasc Res* 2002; 64: 94.
- Ohdan H, Mizunuma K, Tashiro H, et al. Intraoperative near-infrared spectroscopy for evaluating hepatic venous outflow in living-donor right lobe liver. *Transplantation* 2003; 76: 791.
- Ohdan H, Tashiro H, Ishiyama K, et al. Microsurgical hepatic artery reconstruction during living-donor liver transplantation by using head-mounted surgical binocular system. *Transpl Int* 2007; 20: 970.
- Kawaguchi Y, Tashiro H, Amano H, et al. ABO-blood type incompatible living donor liver transplantation in a patient with Budd-Chiari syndrome secondary to essential thrombocythemia. *Hepatol Res* 2009; 39: 520.
- Tanaka Y, Ohdan H, Onoe T, et al. Multiparameter flow cytometric approach for simultaneous evaluation of proliferation and cytokine-secreting activity in T cells responding to allo-stimulation. *Immunol Invest* 2004; 33: 309.
- Wells AD, Gudmundsdottir H, Turka LA. Following the fate of individual T cells throughout activation and clonal expansion. Signals from T cell receptor and CD28 differentially regulate the induction and duration of a proliferative response. *J Clin Invest* 1997; 100: 3173.

Reliability and validity of a new living liver donor quality of life scale

Yuki Morooka · Koji Umeshita · Akinobu Taketomi · Ken Shirabe · Yoshihiko Maehara · Mayumi Yamamoto · Tsuyoshi Shimamura · Akihiko Oshita · Keiko Kanno · Hideki Ohdan · Naoki Kawagishi · Susumu Satomi · Kaoru Ogawa · Kuniko Hagiwara · Hiroaki Nagano

Received: 22 March 2012 / Accepted: 9 April 2012 / Published online: 17 January 2013
© Springer Japan 2013

Abstract

Purpose To develop a living liver donor (LLD) quality of life (QOL) scale and test its reliability and validity.

Methods We sent a draft questionnaire comprising 38 questions to 965 LLDs from five hospitals. To evaluate test–retest reliability, the questionnaire was re-sent 2 weeks later to some of the donors from one hospital.

Results Of the 447 (54.5 %) donors who responded, 15 were excluded. Factor analysis of 26 items extracted 7 subscales; namely, damage from the operation, scarring, satisfaction, burden, after-effects, digestive symptoms, and lack of understanding of donor health. We analyzed construct

validity on the basis of factor analysis and observed significant correlations among the seven subscales. Criterion-related validity was confirmed by significant correlation with the 36-item Short-Form Health Survey scores. None of the subscales showed unreasonable values. We evaluated the subscale reliability for internal consistency ($\alpha = 0.670$ – 0.868 , except for “digestive symptoms”, $\alpha = 0.431$) and test–retest reliability ($r = 0.749$ – 0.918). The factor “digestive symptoms” needs careful consideration because of low internal consistency.

Conclusion The findings of this study confirmed the reliability and validity of the LLD QOL scale, which can be used for quantitatively evaluating the QOL of LLDs.

This article is based on a study first reported in the *Japanese Journal of Transplantation* (with full reference in press). Because of changes in affiliations, some of the authors of this study differ from those involved in the first study.

Keywords Living liver donor · Quality of life · Liver transplantation · Psychosomatic scale

Y. Morooka · K. Umeshita (✉)
Division of Health Science, Osaka University,
1-7 Yamadaoka, Suita City, Osaka 565-0871, Japan
e-mail: umeshita@sahs.med.osaka-u.ac.jp

Y. Morooka
e-mail: laneige@sahs.med.osaka-u.ac.jp

K. Umeshita · H. Nagano
Department of Surgery, Osaka University, 2-2 Yamadaoka E2,
Suita City, Osaka 565-0871, Japan
e-mail: hnagano@gesurg.med.osaka-u.ac.jp

A. Taketomi · K. Shirabe · Y. Maehara
Department of Surgery and Science, Kyushu University,
3-1-1, Maidashi, Higashi-ku, Fukuoka 812-8582, Japan
e-mail: taketomi@med.hokudai.ac.jp

K. Shirabe
e-mail: kshirabe@surg2.med.kyushu-u.ac.jp

Y. Maehara
e-mail: maehara@surg2.med.kyushu-u.ac.jp

A. Taketomi
Department of Gastroenterological Surgery I,
Hokkaido University, Kita 15 Nishi 7, Kita-ku,
Sapporo 060-8638, Japan

M. Yamamoto · T. Shimamura
Hokkaido University Hospital, Kita 14, Nishi 5,
Kita-ku, Sapporo 060-8048, Japan
e-mail: wonbin@med.hokudai.ac.jp

T. Shimamura
e-mail: t_shima@med.hokudai.ac.jp

A. Oshita · H. Ohdan
Department of Surgery, Division of Frontier Medical Science,
Hiroshima University, 1-2-3, Kasumi, Minami-ku,
Hiroshima 734-8551, Japan
e-mail: oshita-akihiko@umin.ac.jp

H. Ohdan
e-mail: hohdan@hiroshima-u.ac.jp