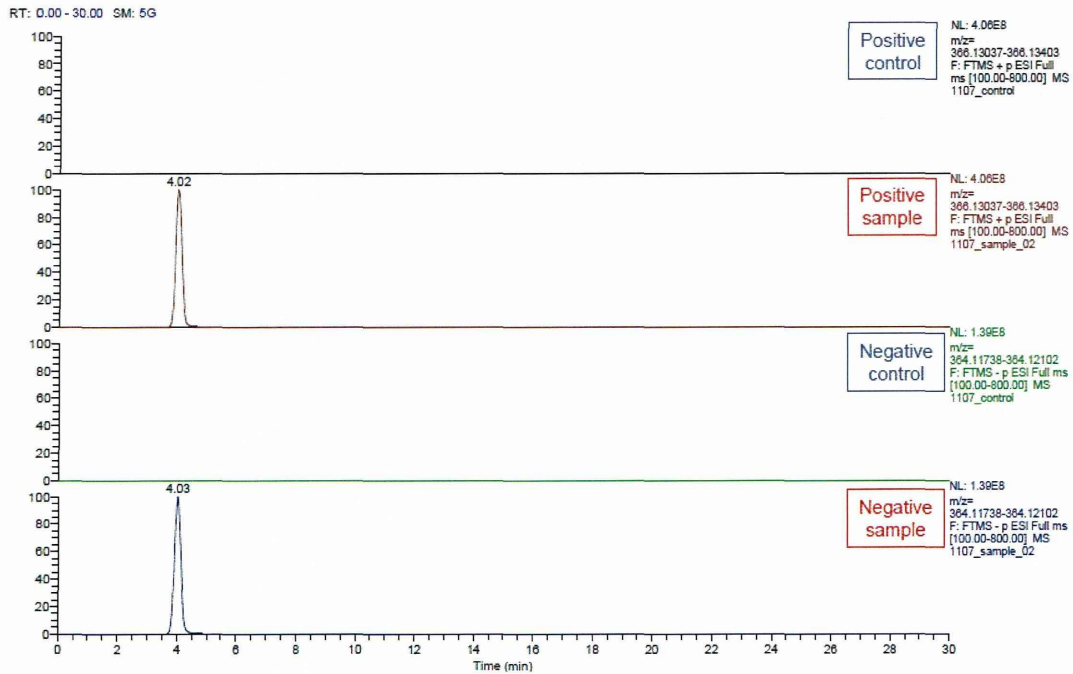
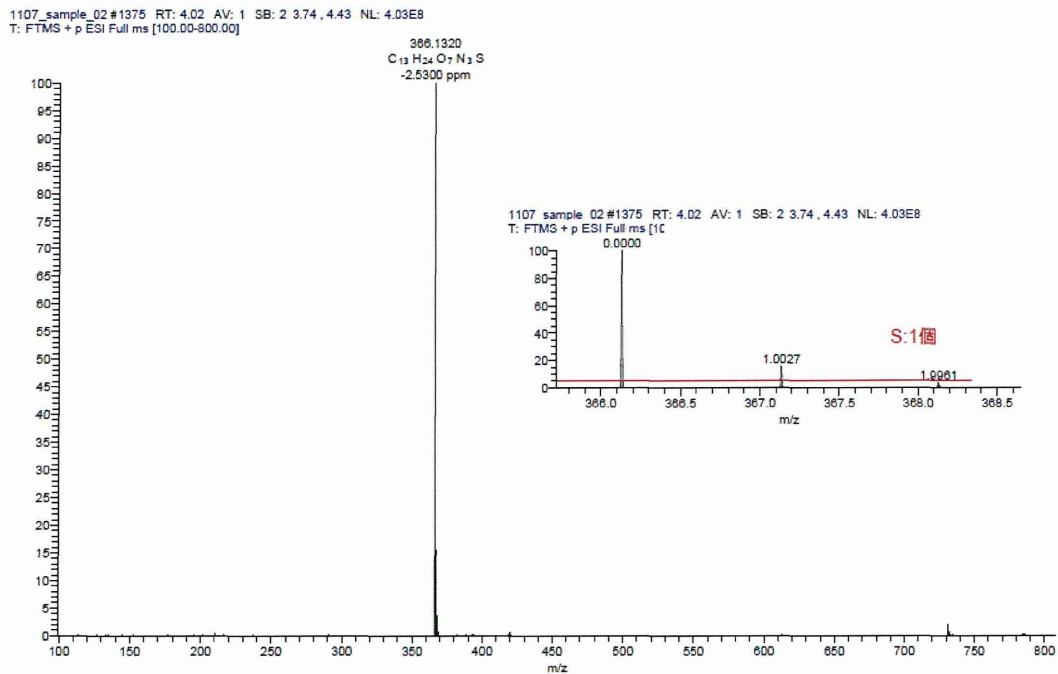


添付資料2-3-15



No.8 マスクロマトグラム



No.8 フルスキャンスペクトル

添付資料2-3-16

Elemental composition search on mass 366.13202

m/z= 361.13202-371.13202

Isotope Min Max

N-14 0 5

O-16 0 10

C-12 0 15

H-1 0 30

S-32 0 1

Cl-35 0 0

Charge 1

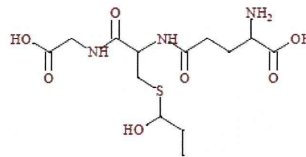
Mass tolerance 5.00 ppm

Nitrogen rule : Even electron ions

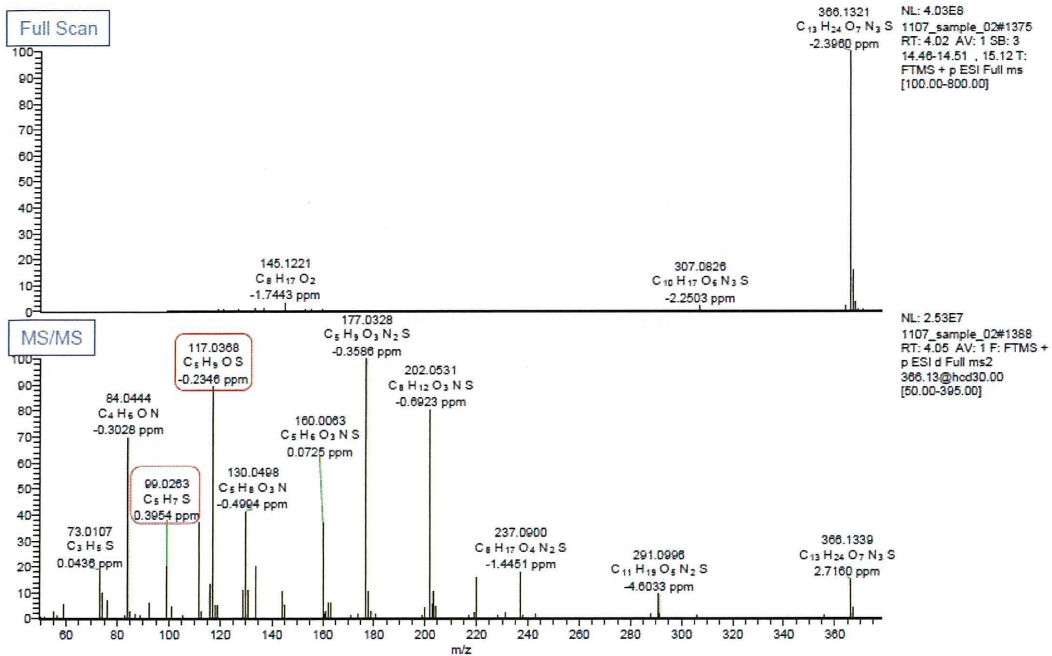
RDB equiv -1.00-100.00

max results 10

m/z	Theo. Mass	Delta (ppm)	RDB equiv.	Composition
366.1320	366.1329	-2.53	3.5	C ₁₃ H ₂₄ O ₇ N ₂ S

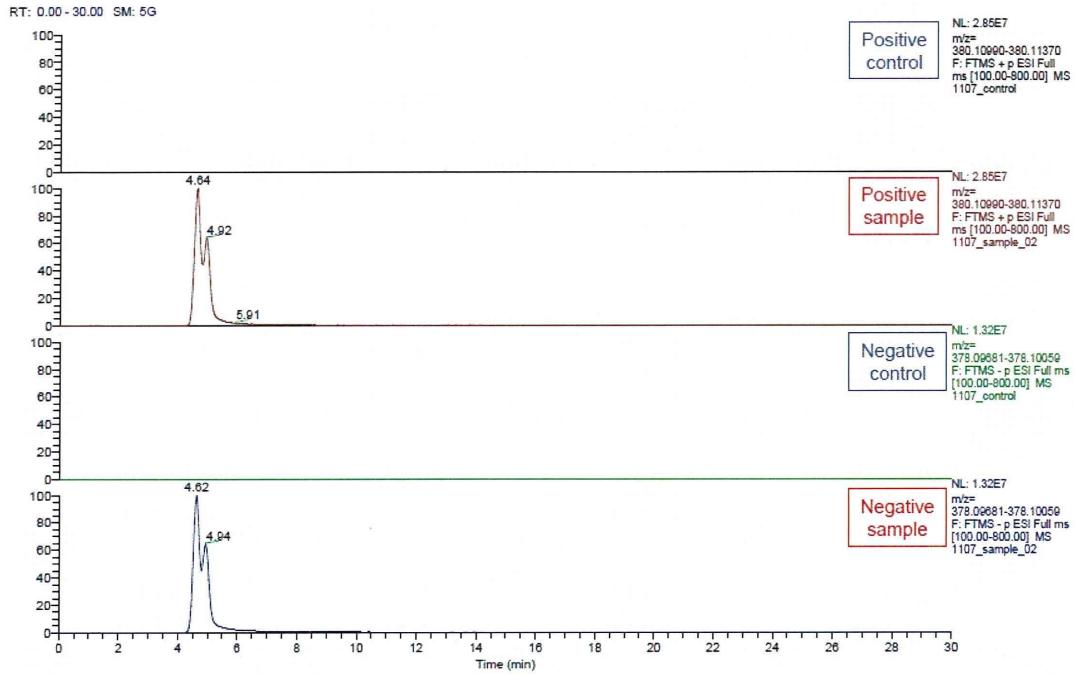


No.8 組成解析結果

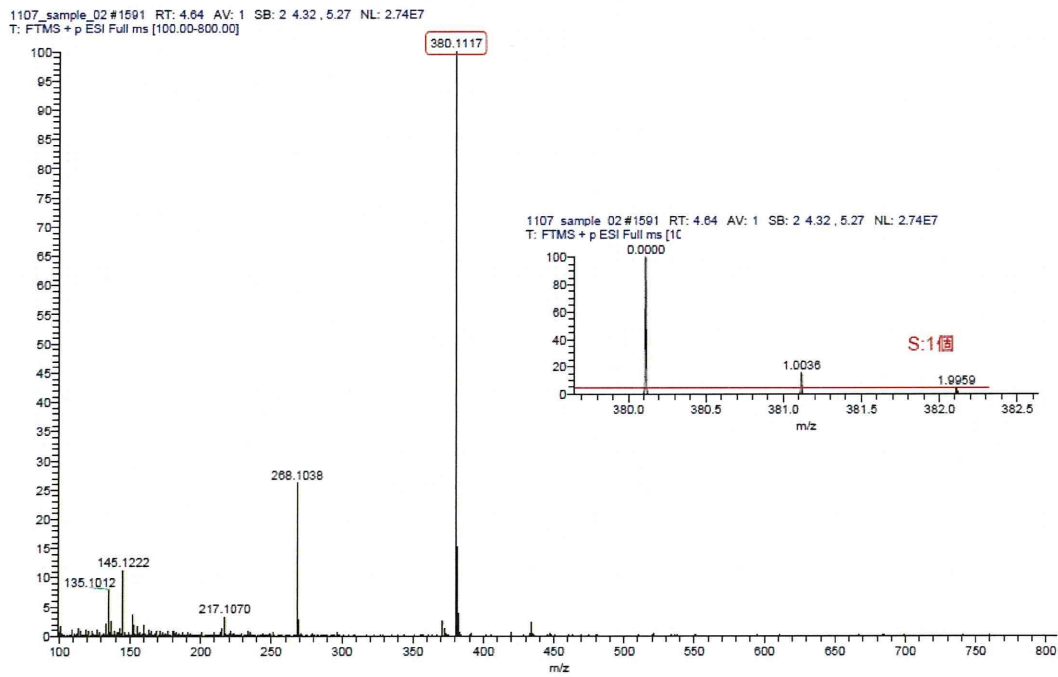


No.8 MS/MSスペクトル

添付資料2-3-17



No.9 マスクロマトグラム



No.9 フルスキャンスペクトル

添付資料2-3-18

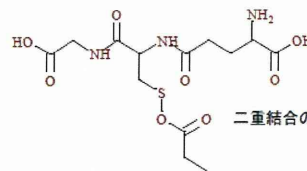
Elemental composition search on mass 380.11170

m/z= 375.11170-385.11170

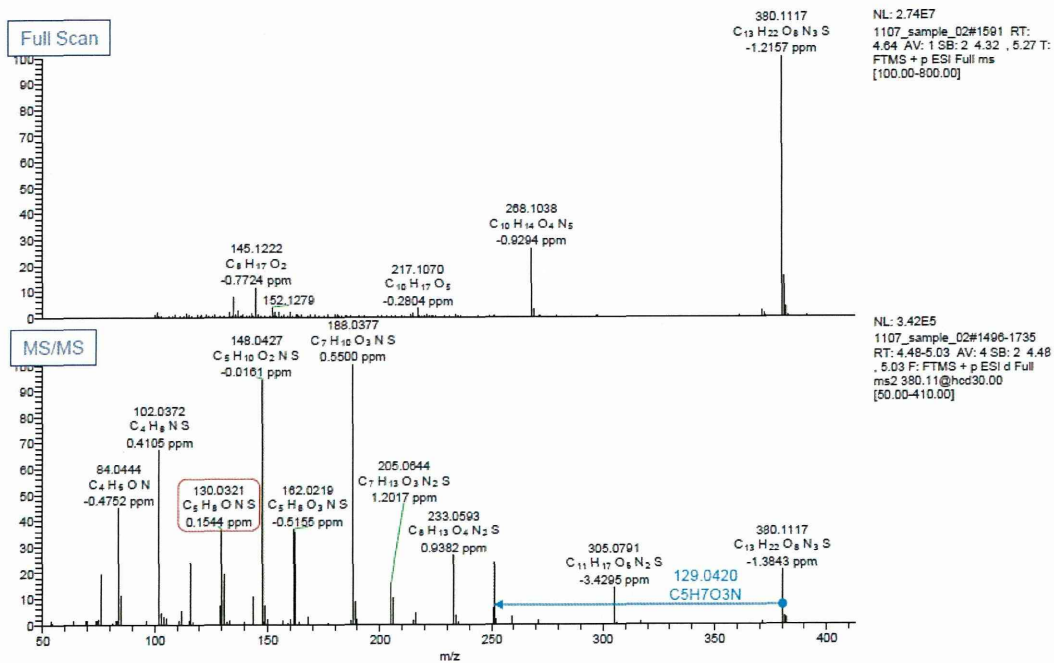
Isotope	Min	Max
N-14	0	5
O-16	0	10
C-12	0	15
H-1	0	30
S-32	0	1
Cl-35	0	0

Charge 1
 Mass tolerance 5.00 ppm
 Nitrogen rule : Even electron ions
 RDB equiv -1.00-100.00
 max results 10

m/z	Theo. Mass	Delta (ppm)	RDB equiv.	Composition
380.1117	380.1122	-1.35	4.5	C ₁₃ H ₂₂ O ₄ N ₃ S

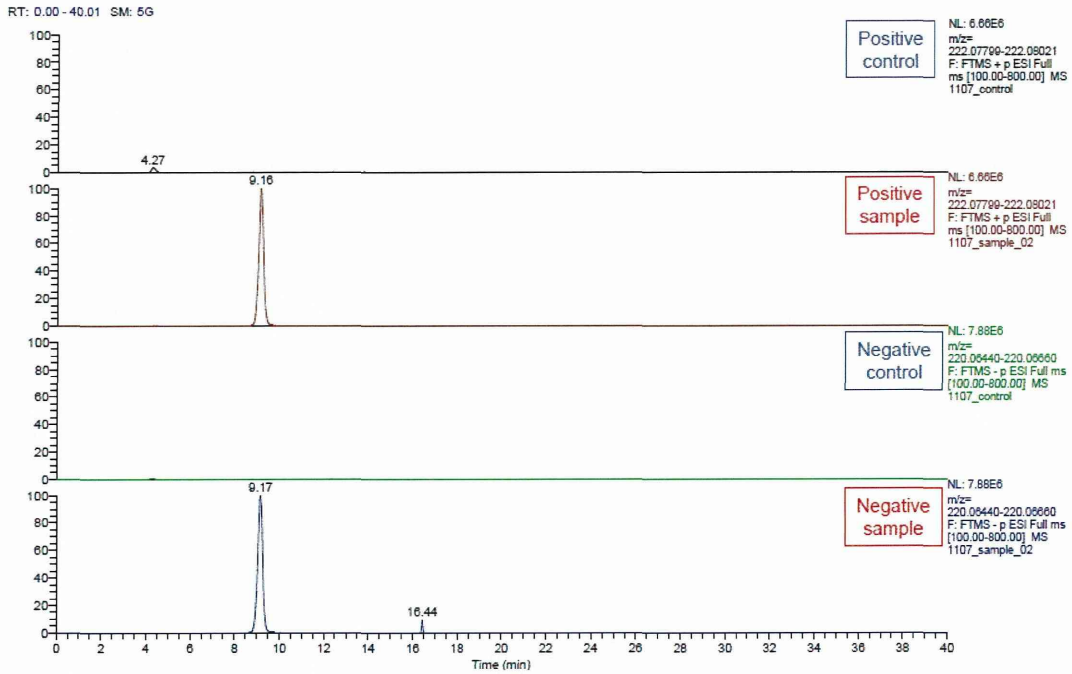


No.9 組成解析結果

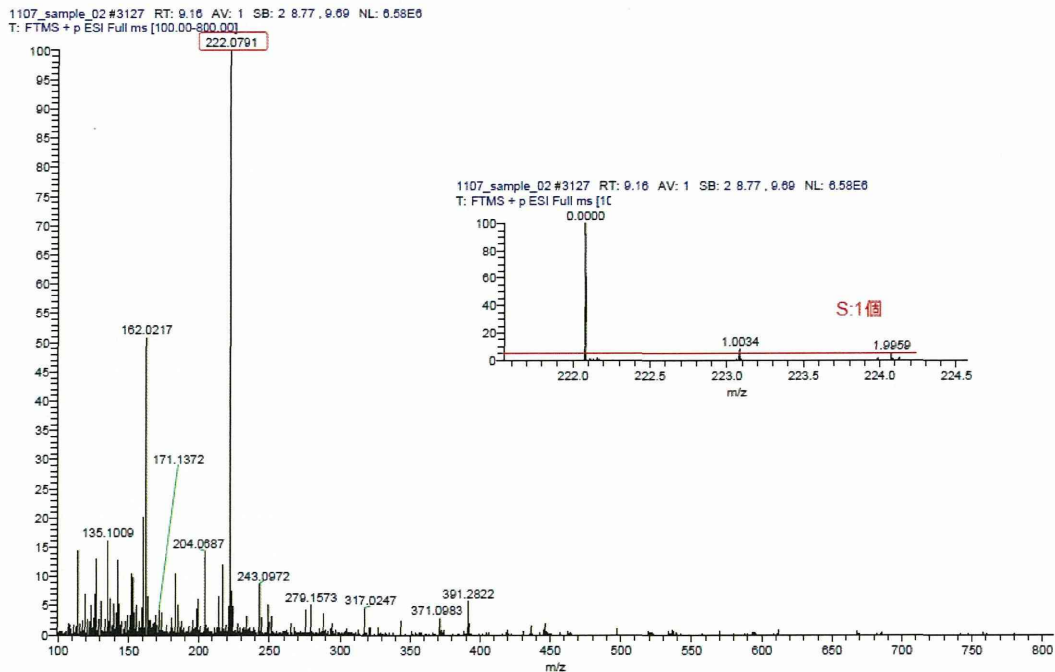


No.9 MS/MSスペクトル

添付資料2-3-19



No.10 マスクロマトグラム



No.10 フルスキャンスペクトル

添付資料2-3-20

Elemental composition search on mass 222.07910

m/z= 217.07910-227.07910

Isotope	Min	Max
N-14	0	5
O-16	0	10
C-12	0	15
H-1	0	30
S-32	0	1
Cl-35	0	0

Charge 1

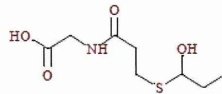
Mass tolerance 5.00 ppm

Nitrogen rule : Even electron ions

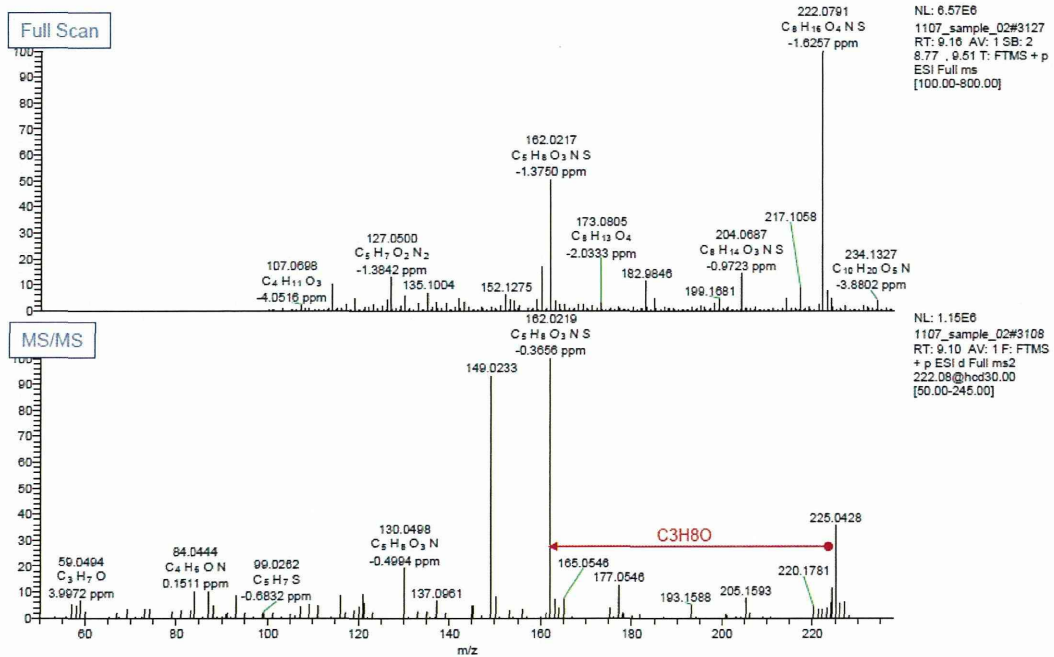
RDB equiv -1.00-100.00

max results 10

m/z	Theo. Mass	Delta (ppm)	RDB equiv.	Composition
222.0791	222.0795	-1.60	1.5	C ₈ H ₁₆ O ₄ N ₂ S

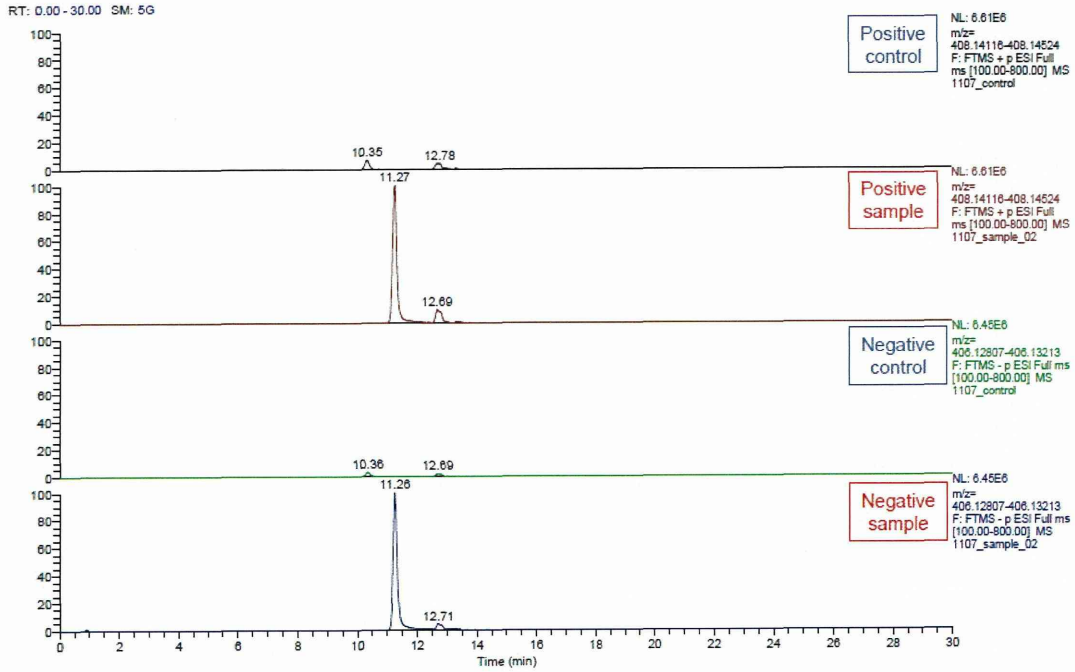


No.10 組成解析結果

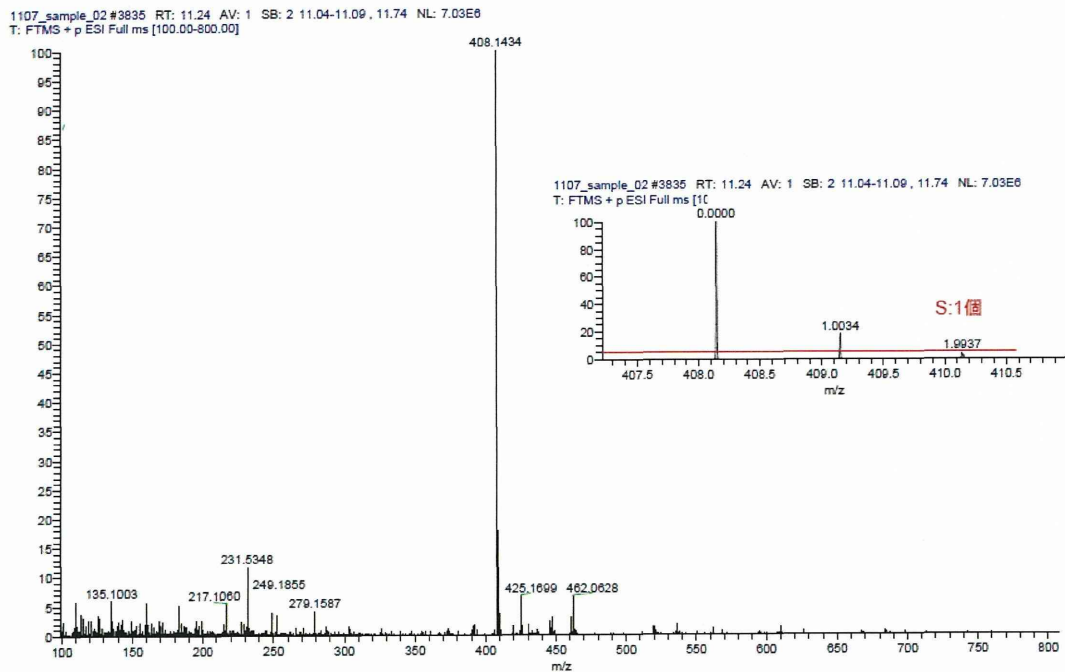


No.10 MS/MSスペクトル

添付資料2-3-21



No.11 マスクロマトグラム



No.11 フルスキャンスペクトル

Elemental composition search on mass 408.14337

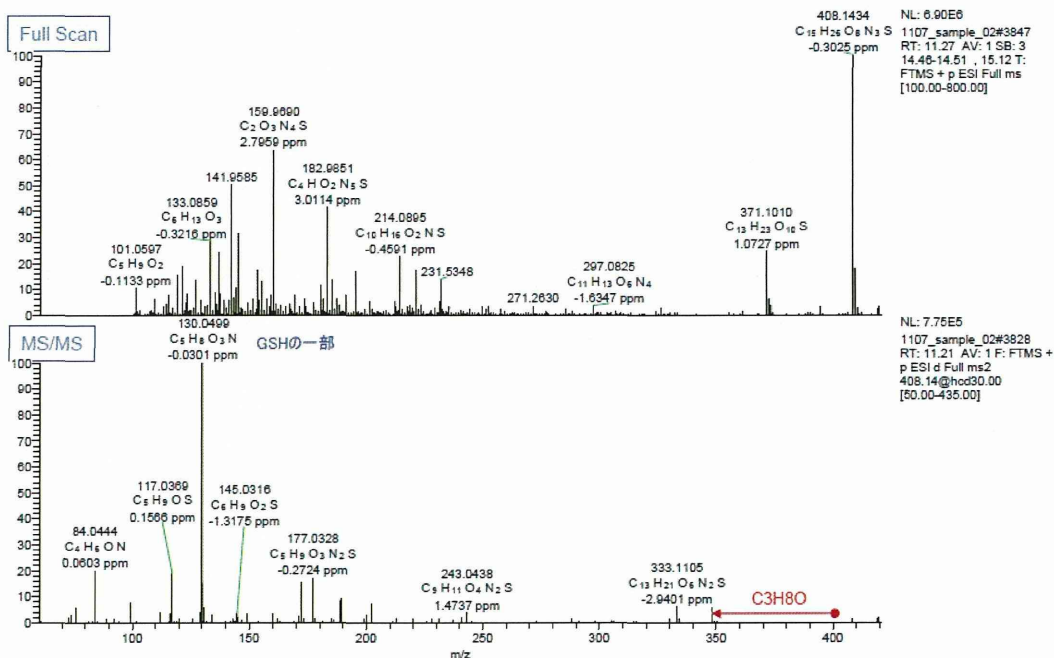
m/z= 408.14337-413.14337

Isotope	Min	Max
N-14	0	5
O-16	0	10
C-12	0	15
H-1	0	30
S-32	0	1
Cl-35	0	0

Charge 1
 Mass tolerance 5.00 ppm
 Nitrogen rule : Even electron ions
 RDB equiv -1.00-100.00
 max results 10

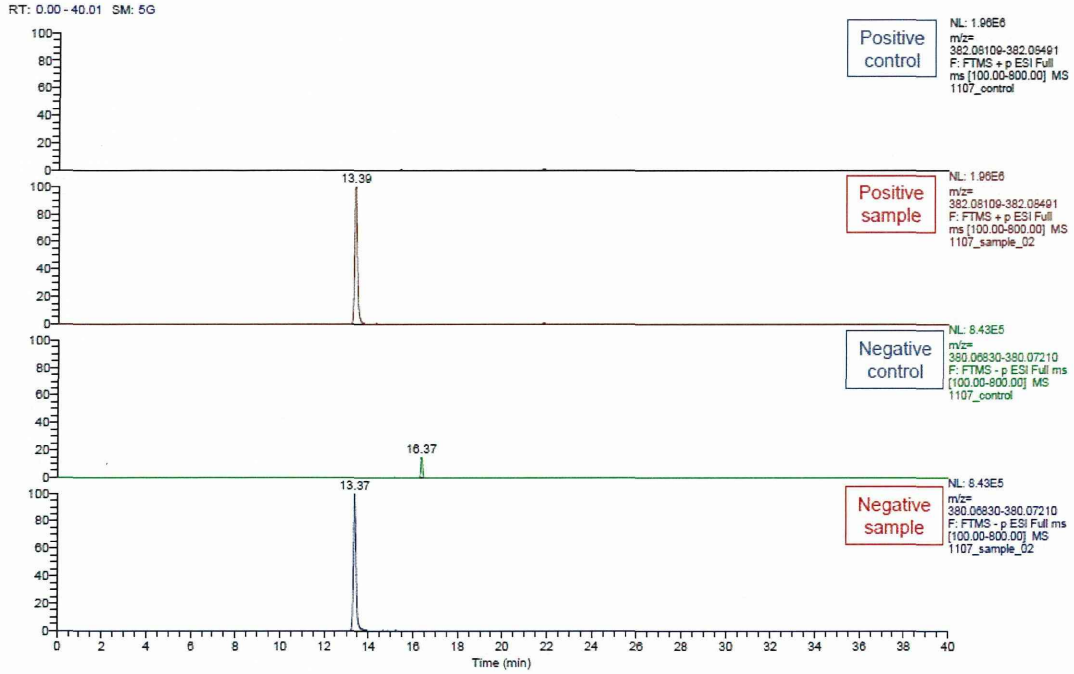
m/z	Theo. Mass	Delta (ppm)	RDB equiv.	Composition
408.1434	408.1435	-0.35	4.5	C ₁₅ H ₂₆ O ₈ N ₃ S

No.11 組成解析結果

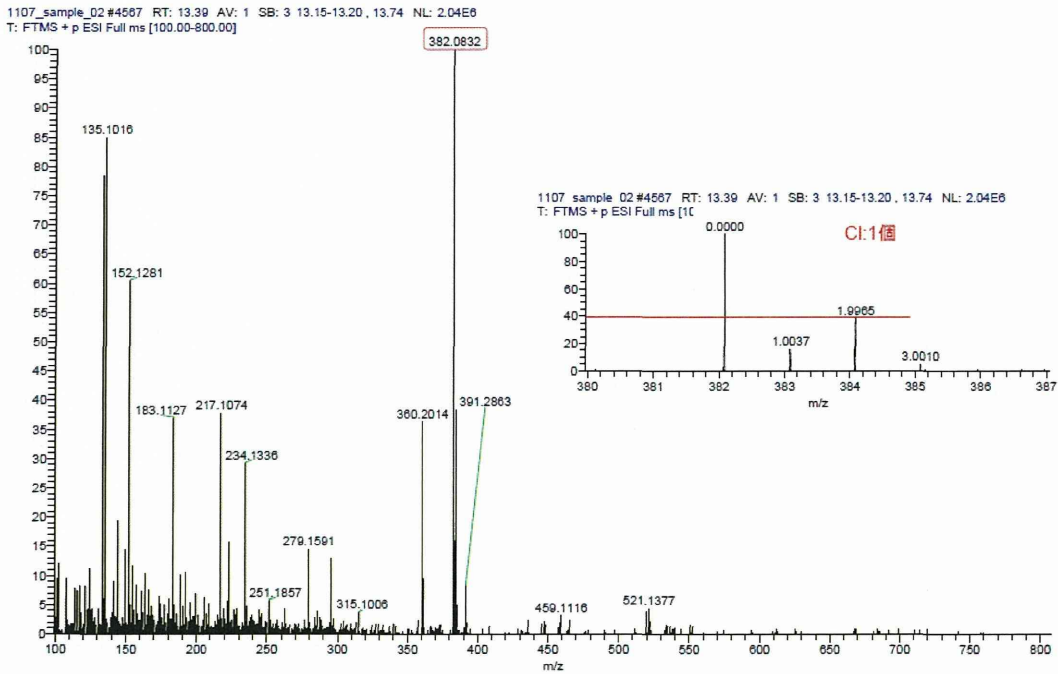


No.11 MS/MSスペクトル

添付資料2-3-23



No.12 マスクロマトグラム



No.12 フルスキャンスペクトル

添付資料2-3-24

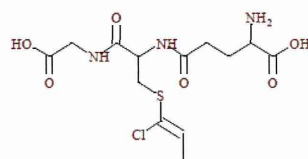
Elemental composition search on mass 382.08310

m/z = 377.08310-387.08310

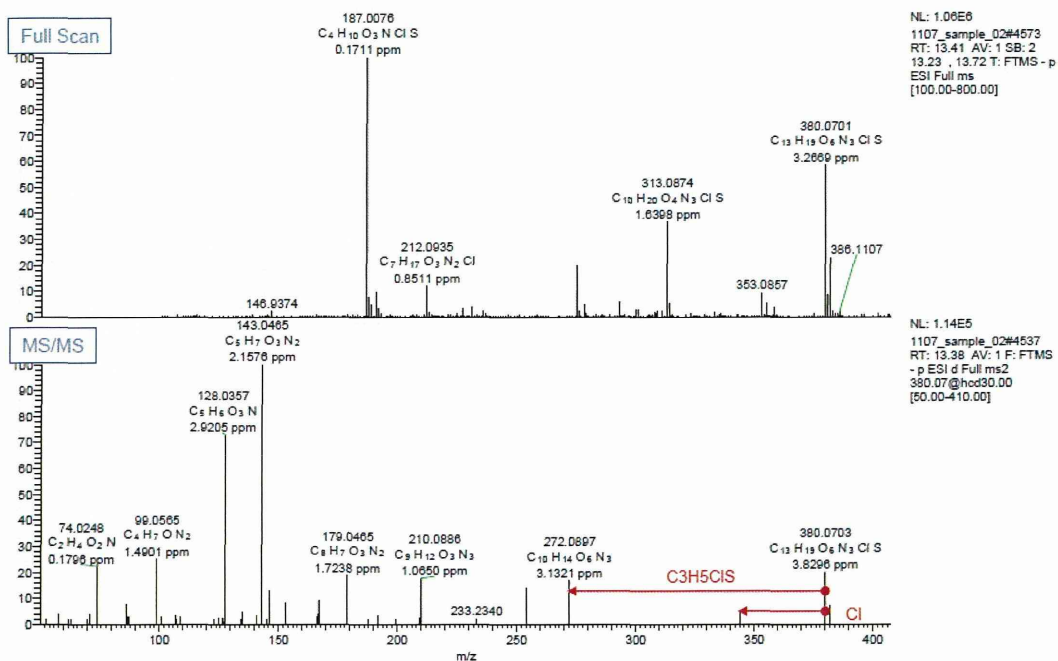
Isotope	Min	Max
N-14	0	5
O-16	0	10
C-12	0	15
H-1	0	30
S-32	0	1
Cl-35	0	1

Charge 1
 Mass tolerance 5.00 ppm
 Nitrogen rule : Even electron ions
 RDB equiv 0.00-100.00
 max results 10

m/z	Theo. Mass	Delta (ppm)	RDB equiv.	Composition
382.0831	382.0834	-0.81	4.5	C ₁₃ H ₂₁ O ₆ N ₃ ClS
	382.0816	3.98	9.5	C ₁₄ H ₁₆ O ₆ N ₃ S

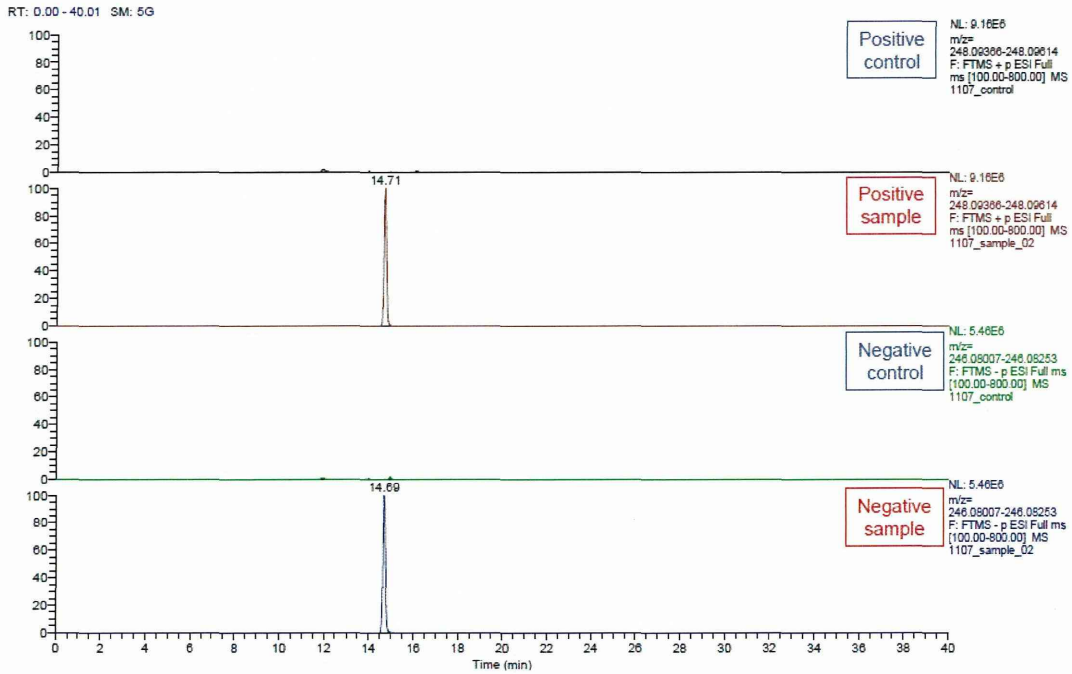


No.12 組成解析結果

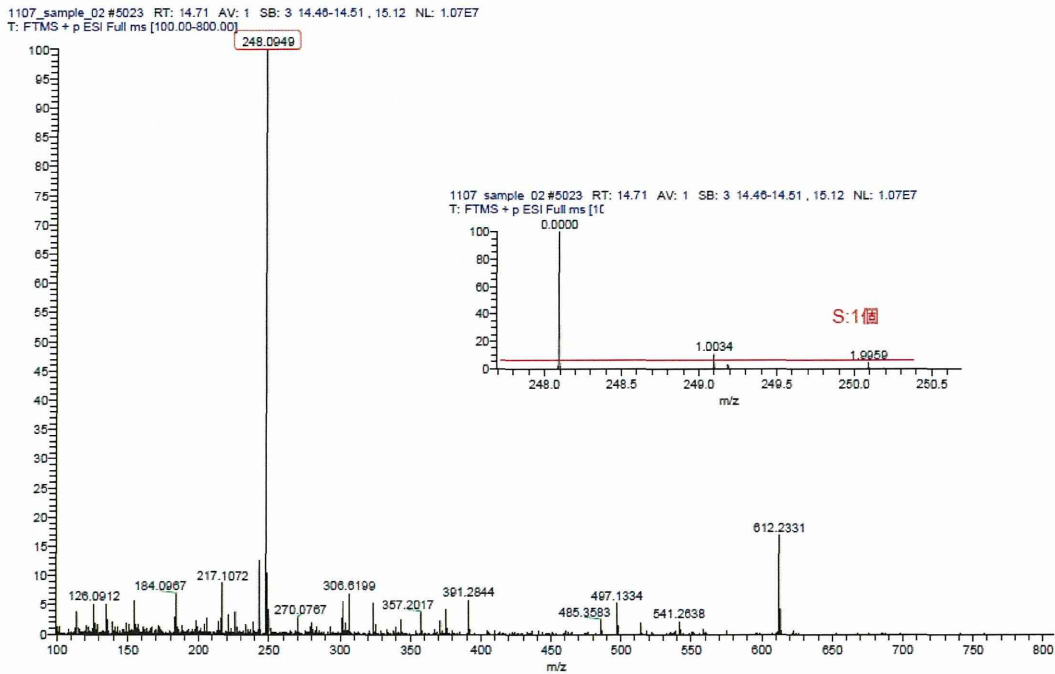


No.12 MS/MSスペクトル

添付資料2-3-25



No.13 マスクロマトグラム



No.13 フルスキャンスペクトル

添付資料2-3-26

Elemental composition search on mass 248.09488

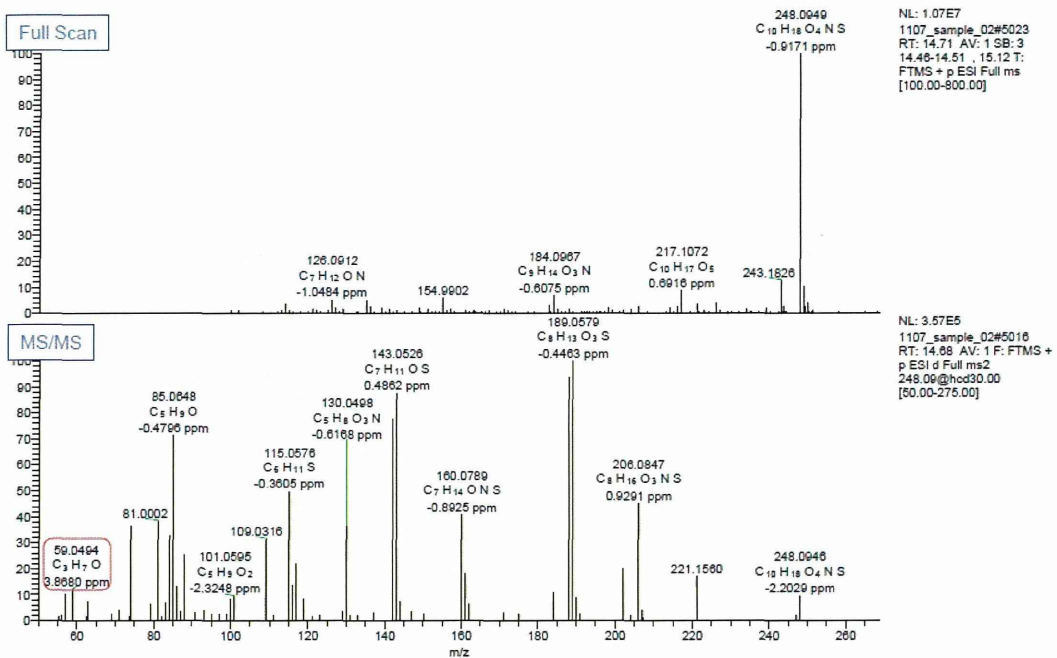
m/z= 243.09488-253.09488

Isotope	Min	Max
N-14	0	3
O-16	0	6
C-12	0	13
H-1	0	30
S-32	0	1
Cl-35	0	0

Charge 1
 Mass tolerance 5.00 ppm
 Nitrogen rule : Even electron ions
 RDB equiv 0.00-100.00
 max results 10

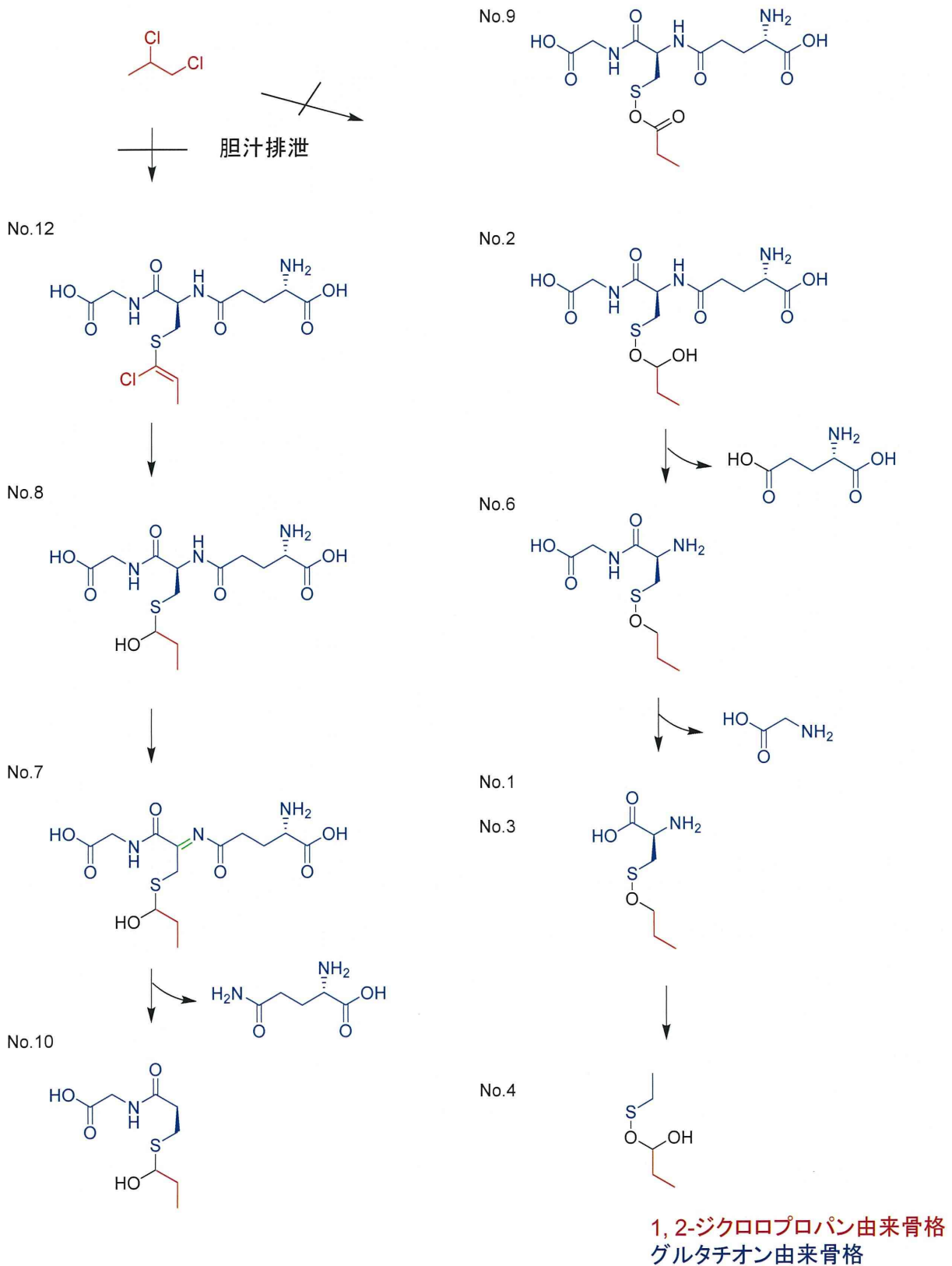
m/z	Theo. Mass	Delta (ppm)	RDB equiv.	Composition
248.0949	248.0951	-0.91	2.5	C ₁₀ H ₁₈ O ₄ N ₃

No.13 組成解析結果



No.13 MS/MSスペクトル

添付資料2-4

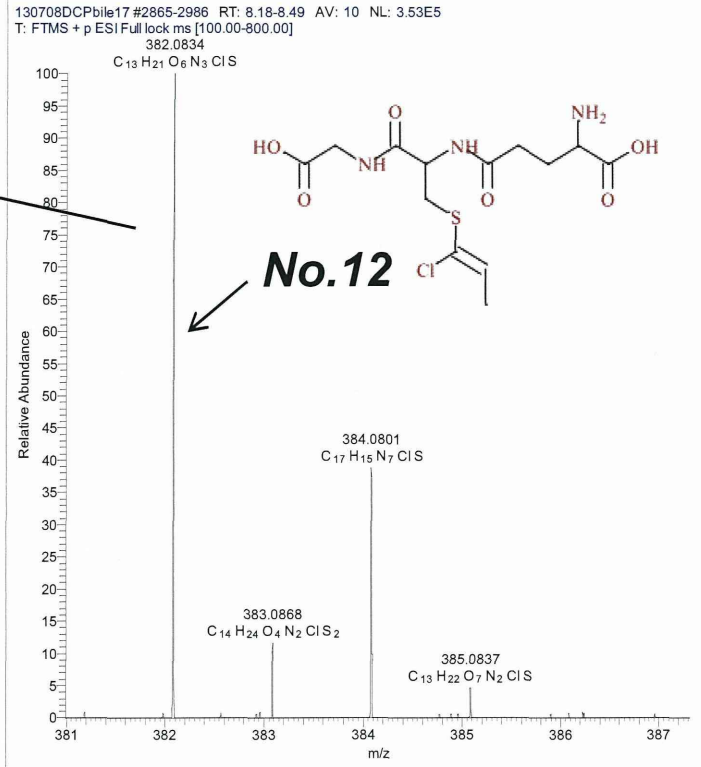
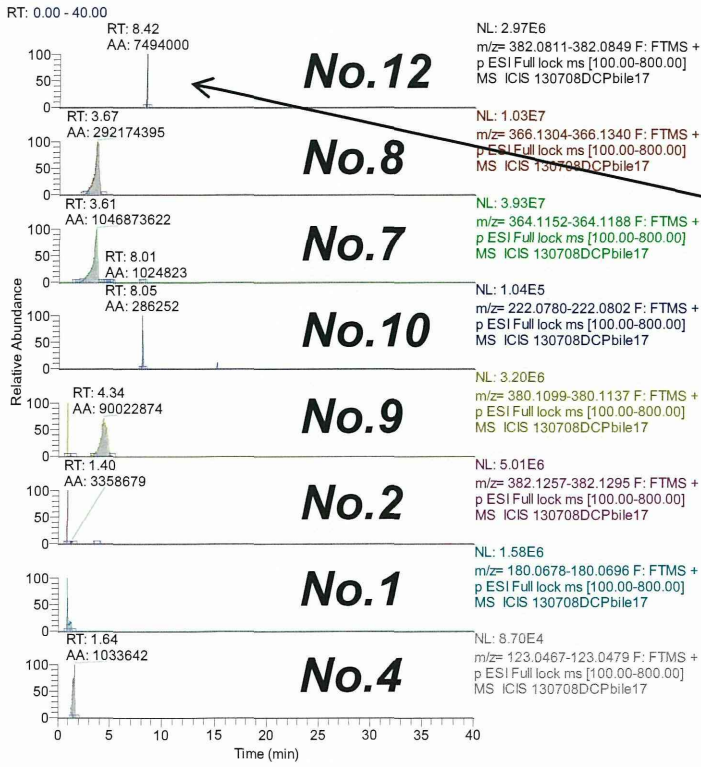


胆汁排泄された1, 2-ジクロロプロパンの予想代謝経路

添付資料2-5

C:\xcalibur\...130708DCPbile17

7/9/2013 5:41:10 AM



*移動相Bが0.1%ギ酸含有アセトニトリルとなった条件での分析結果

1, 2-ジクロロプロパン投与ラットの胆汁分析

