

Table 15 Histologic types of biopsy specimens

* Excluding 277 treatment unknown, missing cases of treatment types

Histologic types	Total (%)	
Not examined	65	(1.4%)
SCC	4258	(90.8%)
SCC	2650	(56.5%)
Well diff.	323	(6.9%)
Moderately diff.	971	(20.7%)
Poorly diff.	314	(6.7%)
Adenocarcinoma	182	(3.9%)
Undifferentiated	17	(0.4%)
Carcinosarcoma	14	(0.3%)
Malignant melanoma	9	(0.2%)
Other tumors	50	(1.1%)
Dysplasia	0	(0.0%)
Unknown	97	(2.1%)
Total	4692	
Missing	25	

Table 16 Depth of tumor invasion, cT (UICC TNM 6th)

* Excluding 277 treatment unknown, missing cases of treatment types

cT	Total (%)	
cTX	13	(0.3%)
cT0	12	(0.3%)
cTis	154	(3.3%)
cT1	211	(4.5%)
cT1a	560	(11.9%)
cT1b	763	(16.3%)
cT2	592	(12.6%)
cT3	1666	(35.5%)
cT4	616	(13.1%)
Unknown	108	(2.3%)
Total	4695	
Missing	22	

Table 17 Lymph node metastasis, cN (UICC TNM 6th)

* Excluding 277 treatment unknown, missing cases of treatment types

cN	Total (%)	
cNX	42	(0.9%)
cN0	2173	(46.3%)
cN1	2340	(49.8%)
Unknown	140	(3.0%)
Total	4695	
Missing	22	

Table 18 Distant metastasis, cM (UICC TNM 6th)

* Excluding 277 treatment unknown, missing cases of treatment types

cM	Total (%)	
cMX	40	(0.9%)
cM0	3895	(82.9%)
cM1	169	(3.6%)
cM1a	108	(2.3%)
cM1b	382	(8.1%)
Unknown	102	(2.2%)
Total	4696	
Missing	21	

II. Clinical results of patients treated with endoscopy in 2006

Table 20 Clinical stage (UICC TNM 6th)

* Excluding 277 treatment unknown, missing cases of treatment types

cStage	Endoscopic treatment (%)	Chemotherapy and/or radiotherapy (%)	Surgery		Total (%)
			Palliative surgery (%)	Esophagectomy (%)	
0	142 (20.4%)	1 (0.1%)	1 (0.6%)	12 (0.5%)	156 (3.3%)
I	478 (68.7%)	168 (12.8%)	42 (26.3%)	588 (23.3%)	1276 (27.2%)
IIA	6 (0.9%)	121 (9.2%)	28 (17.5%)	468 (18.5%)	623 (13.3%)
IIB	8 (1.1%)	89 (6.8%)	8 (5.0%)	333 (13.2%)	438 (9.3%)
III	14 (2.0%)	456 (34.7%)	48 (30.0%)	832 (32.9%)	1350 (28.8%)
IV	2 (0.3%)	127 (9.7%)	3 (1.9%)	28 (1.1%)	160 (3.4%)
IVA	1 (0.1%)	46 (3.5%)	3 (1.9%)	56 (2.2%)	106 (2.3%)
IVB	10 (1.4%)	216 (16.5%)	15 (9.4%)	125 (4.9%)	366 (7.8%)
Unknown	35 (5.0%)	89 (6.8%)	12 (7.5%)	84 (3.3%)	220 (4.7%)
Total	696	1313	160	2526	4695
Missing	1	2	0	19	22

Table 22 Treatment details in patients receiving endoscopy

Treatment details	Cases (%)
EMR	288 (41.4%)
ESD	354 (50.9%)
EMR + PDT	2 (0.3%)
EMR + YAG laser / APC	6 (0.9%)
EMR + ESD	5 (0.7%)
EMR + other treatment	1 (0.1%)
ESD + other treatment	1 (0.1%)
PDT	2 (0.3%)
YAG laser / APC	1 (0.1%)
YAG laser / APC + ESD	1 (0.1%)
YAG laser / APC + Unknown	1 (0.1%)
Esophageal stent	28 (4.0%)
Esophageal stent + other treatment	2 (0.3%)
Tracheal stent	1 (0.1%)
Others	3 (0.4%)
Total	696
Missing	1

EMR: endoscopic mucosal resection, ESD: endoscopic submucosal dissection, PDT: photodynamic therapy, YAG: yttrium aluminum garnet, APC: Argon plasma coagulation, MCT: microwave coagulation therapy

* "Esophageal stenting + tracheal stenting + other (PEG)" case is included in "Esophageal stenting + tracheal stenting".

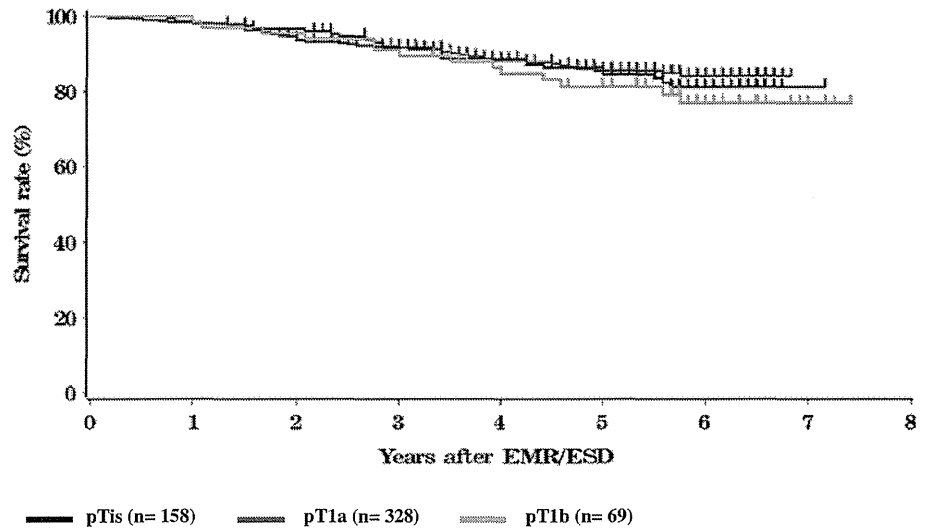
Table 26 Complications of EMR/ESD

Complications of EMR/ESD	Cases (%)
None	616 (93.6%)
Perforation	3 (0.5%)
Bleeding	5 (0.8%)
Mediastinitis	1 (0.2%)
Stenosis	23 (3.5%)
Stenosis+Others	1 (0.2%)
Perforation+Stenosis	1 (0.2%)
Perforation+Stenosis+Others	1 (0.2%)
Perforation+Bleeding	1 (0.2%)
Perforation+Others	1 (0.2%)
Others	5 (0.8%)
Unknown	0 (0.0%)
Total	658
Missing	4

Table 30 Depth of tumor invasion of EMR/ESD specimens

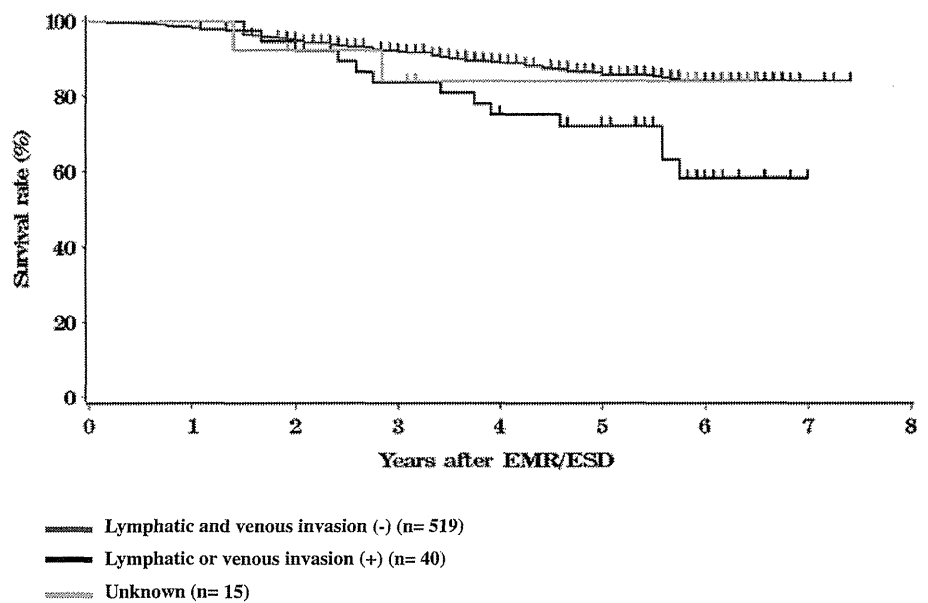
Pathological depth of tumor invasion (pT)	Cases (%)
pTX	2 (0.3%)
pT0	14 (2.1%)
pTis	183 (27.9%)
pT1a	369 (56.2%)
pT1b	80 (12.2%)
pT2	3 (0.5%)
Unknown	6 (0.9%)
Total	657
Missing	5

Fig. 3 Survival of patients treated by EMR/ESD in relation to the pathological depth of tumor invasion (pT)



	Years after EMR/ESD							
	1	2	3	4	5	6	7	8
pTis	98.0%	96.7%	91.7%	88.8%	84.6%	81.2%	81.2%	81.2%
pT1a	98.4%	94.3%	91.9%	88.2%	85.6%	84.2%	84.2%	-
pT1b	98.5%	95.5%	91.0%	86.4%	81.5%	76.9%	76.9%	76.9%

Fig. 4 Survival of patients treated by EMR/ESD in relation to the lymphatic or venous invasion



	Years after EMR/ESD							
	1	2	3	4	5	6	7	8
Lymphatic and venous invasion (-)	98.2%	95.2%	92.3%	89.1%	85.7%	84.3%	84.3%	84.3%
Lymphatic or venous invasion (+)	100.0%	92.1%	83.7%	75.4%	72.2%	58.3%	58.3%	58.3%
Unknown	100.0%	92.3%	83.9%	83.9%	83.9%	83.9%	83.9%	-

III. Clinical results in patients treated with chemotherapy and/or radiotherapy in 2006

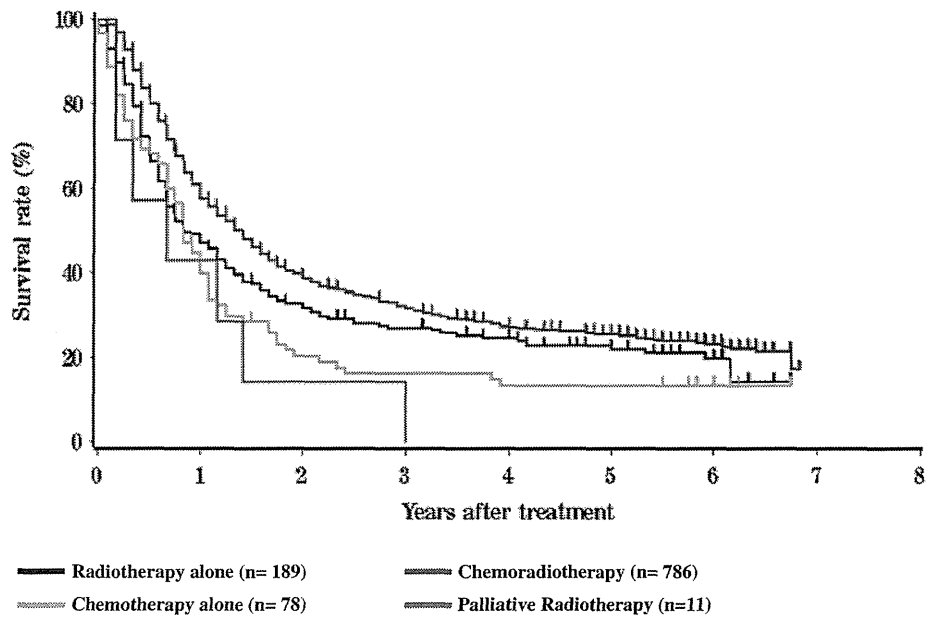
Table 33 Dose of irradiation (non-surgically treated cases)

Dose of irradiation (Gy)	Radiotherapy		Palliative (%)	Recurrence (%)	Others (%)	Total (%)
	alone (%)	with chemotherapy (%)				
0	0 (0.0%)	0 (0.0%)	0 (0.0%)	0 (0.0%)	0	0 (0.0%)
-29	4 (1.3%)	5 (6.0%)	12 (13.2%)	4 (33.3%)	0	25 (5.1%)
30-39	5 (1.6%)	2 (2.4%)	10 (11.0%)	3 (25.0%)	0	20 (4.1%)
40-49	21 (6.9%)	5 (6.0%)	15 (16.5%)	0 (0.0%)	0	41 (8.3%)
50-59	45 (14.8%)	6 (7.1%)	19 (20.9%)	2 (16.7%)	0	72 (14.6%)
60-69	210 (68.9%)	54 (64.3%)	28 (30.8%)	2 (16.7%)	0	294 (59.8%)
70-	20 (6.6%)	12 (14.3%)	7 (7.7%)	1 (8.3%)	0	40 (8.1%)
Total	305	84	91	12	0	492
Median (min - max)	60 (2 - 70)	61.7 (2 - 70)	50.4 (2.5 - 70)	34 (6 - 70)	-	60 (2 - 70)
Missing	12	0	3	0	0	15

Table 34 Dose of irradiation (surgically treated cases)

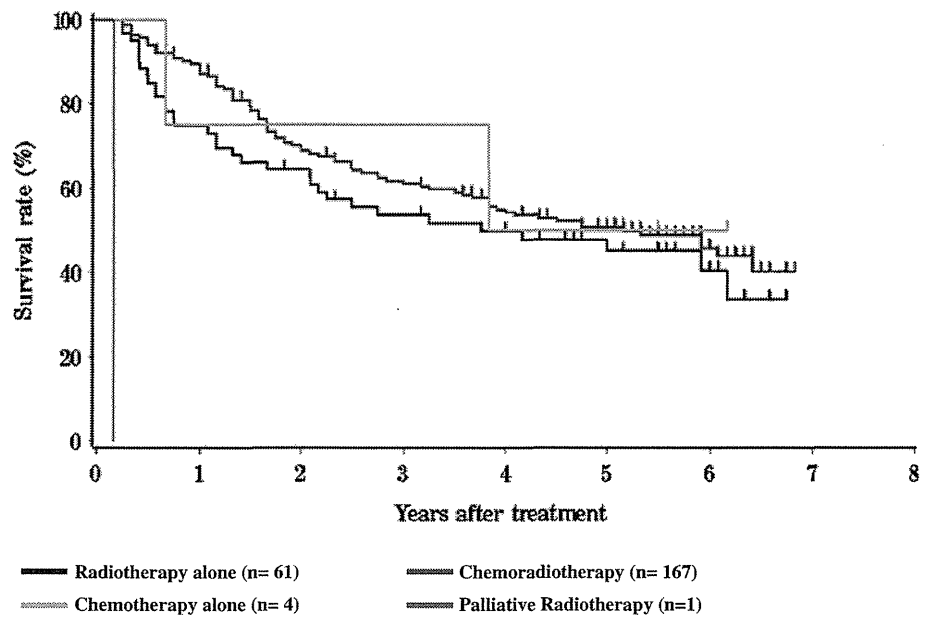
Dose of irradiation (Gy)	Preope RT (%)	Postope RT (%)
0	0 (0.0%)	0 (0.0%)
-29	5 (2.8%)	1 (1.2%)
30-39	52 (29.1%)	10 (12.3%)
40-49	97 (54.2%)	29 (35.8%)
50-59	2 (1.1%)	21 (25.9%)
60-69	22 (12.3%)	19 (23.5%)
70-	1 (0.6%)	1 (1.2%)
Total	179	81
Median (min - max)	40 (20 - 66)	50 (20 - 70)
Missing	14	2

Fig. 5 Survival of patients treated by chemotherapy and/or radiotherapy



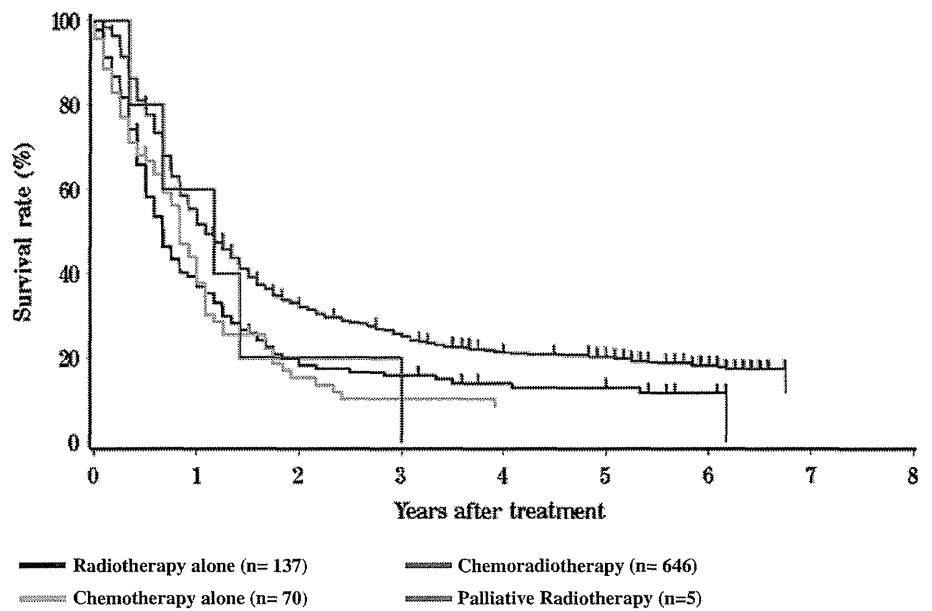
	Years after treatment							
	1	2	3	4	5	6	7	8
Radiotherapy alone	47.1%	32.8%	27.0%	24.7%	22.0%	19.9%	14.3%	-
Chemoradiotherapy	57.6%	39.7%	32.3%	27.4%	25.7%	23.2%	17.3%	-
Chemotherapy alone	28.9%	12.2%	9.1%	6.1%	3.0%	3.0%	3.0%	-
Palliative Radiotherapy	42.9%	14.3%	14.3%	-	-	-	-	-

Fig. 6 Survival of patients treated by chemotherapy and/or radiotherapy (cStage I-IIA)



	Years after treatment							
	1	2	3	4	5	6	7	8
Radiotherapy alone	74.8%	64.3%	53.5%	49.7%	45.0%	40.5%	33.7%	-
Chemoradiotherapy	87.2%	69.4%	61.6%	54.9%	50.6%	45.7%	40.1%	-
Chemotherapy alone	75.0%	75.0%	75.0%	50.0%	50.0%	50.0%	-	-
Palliative Radiotherapy	-	-	-	-	-	-	-	-

Fig. 7 Survival of patients treated by chemotherapy and/or radiotherapy (cStage IIB-IVB)



	Years after treatment							
	1	2	3	4	5	6	7	8
Radiotherapy alone	36.9%	19.9%	15.8%	13.9%	12.8%	11.7%	-	-
Chemoradiotherapy	51.6%	33.0%	25.7%	21.4%	20.3%	18.2%	-	-
Chemotherapy alone	37.8%	15.3%	10.2%	8.5%	8.5%	8.5%	-	-
Palliative Radiotherapy	60.0%	20.0%	0.0%	-	-	-	-	-

IV. Clinical results in patients treated with esophagectomy in 2006

Table 42 Tumor location

Locations	Cases (%)
Cervical	81 (3.2%)
Upper thotacic	290 (11.5%)
Middle thoracic	1193 (47.2%)
Lower thoracic	734 (29.0%)
Abdominal	187 (7.4%)
EG	21 (0.8%)
EG-Junction (E=G)	18 (0.7%)
Unknown	4 (0.2%)
Total lesions	2528
Total cases	2542
Missing	3

EG:

esophago-gastric

Table 44 Endoscopic surgery

Endoscopic surgery	Cases (%)
None	1994 (79.3%)
Thoracoscopy-assisted	234 (9.3%)
Laparoscopy-assisted	87 (3.5%)
Thoracoscopy + Laparoscopy-assisted	154 (6.1%)
Mediastinoscopy-assisted	34 (1.4%)
Thoracoscopy + Mediastinoscopy-assisted	0
Laparoscopy + Mediastinoscopy-assisted	0 (0.0%)
Others	11 (0.4%)
Unknown	1 (0.0%)
Total	2515
Missing	30

Table 43 Approaches to tumor resection

Approaches	Cases (%)
Cervical approach	113 (4.5%)
Right thoracotomy	2063 (81.3%)
Left thoracotomy	41 (1.6%)
Left thoracoabdominal approach	53 (2.1%)
Laparotomy	100 (3.9%)
Transhiatal lower esophagectomy	34 (1.3%)
Transhiatal thoracic esophagectomy	72 (2.8%)
Sternotomy	7 (0.3%)
Others	51 (2.0%)
Unknown	5 (0.2%)
Total	2539
Missing	6

Table 45 Fields of lymph node dissection according to the location of the tumor

* Excluding pharynx and missing 16 cases of locations

Locations	Cervical	Upper thoracic	Middle thoracic	Lower thoracic	Abdominal	EGJ	Total
Region of lymphadenectomy	Cases (%)	Cases (%)	Cases (%)	Cases (%)	Cases (%)	Cases (%)	Cases (%)
None	13 (16.0%)	23 (8.0%)	56 (4.7%)	34 (4.7%)	7 (3.6%)	3 (7.7%)	136 (5.4%)
C	17 (21.0%)	3 (1.0%)	10 (0.8%)	2 (0.3%)	0 (0.0%)	0 (0.0%)	32 (1.3%)
C+UM	23 (28.4%)	1 (0.3%)	1 (0.1%)	1 (0.1%)	0 (0.0%)	0 (0.0%)	26 (1.0%)
C+UM+MLM	3 (3.7%)	10 (3.5%)	26 (2.2%)	5 (0.7%)	0 (0.0%)	0 (0.0%)	44 (1.8%)
C+UM+MLM+A	16 (19.8%)	172 (59.9%)	610 (51.6%)	276 (37.8%)	20 (10.4%)	2 (5.1%)	1096 (43.6%)
C+UM+A	4 (4.9%)	1 (0.3%)	3 (0.3%)	5 (0.7%)	1 (0.5%)	0 (0.0%)	14 (0.6%)
C+MLM	17 (21.0%)	3 (1.0%)	12 (1.0%)	3 (0.4%)	1 (0.5%)	1 (2.6%)	37 (1.5%)
C+MLM+A	0 (0.0%)	1 (0.3%)	5 (0.4%)	6 (0.8%)	1 (0.5%)	0 (0.0%)	13 (0.5%)
C+A	2 (2.5%)	1 (0.3%)	2 (0.2%)	1 (0.1%)	0 (0.0%)	0 (0.0%)	6 (0.2%)
UM	0 (0.0%)	1 (0.3%)	4 (0.3%)	0 (0.0%)	1 (0.5%)	0 (0.0%)	6 (0.2%)
UM+MLM	0 (0.0%)	2 (0.7%)	16 (1.4%)	9 (1.2%)	2 (1.0%)	0 (0.0%)	29 (1.2%)
UM+MLM+A	2 (2.5%)	65 (22.6%)	393 (33.2%)	292 (40.0%)	42 (21.9%)	5 (12.8%)	799 (31.8%)
UM+A	1 (1.2%)	0 (0.0%)	2 (0.2%)	2 (0.3%)	1 (0.5%)	1 (2.6%)	7 (0.3%)
MLM	0 (0.0%)	0 (0.0%)	2 (0.2%)	1 (0.1%)	1 (0.5%)	1 (2.6%)	5 (0.2%)
MLM+A	0 (0.0%)	5 (1.7%)	40 (3.4%)	87 (11.9%)	88 (45.8%)	19 (48.7%)	239 (9.5%)
A	0 (0.0%)	2 (0.7%)	12 (1.0%)	7 (1.0%)	27 (14.1%)	8 (20.5%)	56 (2.2%)
Unknown	0 (0.0%)	0 (0.0%)	1 (0.1%)	2 (0.3%)	1 (0.5%)	0 (0.0%)	4 (0.2%)
Total	81	287	1183	730	192	39	2512
Missing	0	3	10	4	0	0	17

Table 47 Reconstruction route

Reconstruction route	Cases (%)	
None	41	(1.7%)
Subcutaneous	285	(11.7%)
Anterior mediastinal	868	(35.6%)
Intrathoracic	369	(15.1%)
Posterior mediastinal	828	(33.9%)
Cervical	23	(0.9%)
Others	18	(0.7%)
Unknown	9	(0.4%)
Total	2441	
Missing	15	

Table 48 Organs used for reconstruction

Organs used for reconstruction	Cases (%)	
None	46	(1.8%)
Whole stomach	109	(4.3%)
Gastric tube	1989	(77.6%)
Jejunum	103	(4.0%)
Free jejunum	46	(1.8%)
Colon	112	(4.4%)
Free colon	14	(0.5%)
Skin graft	1	(0.0%)
Others	140	(5.5%)
Unknown	3	(0.1%)
Total lesions	2563	
Total cases	2541	
Missing	4	

Table 55 Histological classification

Histological classification	Cases (%)	
Not examined	2	(0.1%)
SCC	2233	(88.3%)
SCC	348	(13.8%)
Well diff.	486	(19.2%)
Moderately diff.	1013	(40.1%)
Poorly diff.	386	(15.3%)
Adenocarcinoma	80	(3.2%)
Barrett's adenocarcinoma	42	(1.7%)
Adenosquamous cell carcinoma (Co-existing)	11	(0.4%)
(Mucoepidermoid carcinoma)	2	(0.1%)
Adenoid cystic carcinoma	2	(0.1%)
Basaloid carcinoma	37	(1.5%)
Undiff. carcinoma (small cell)	13	(0.5%)
Undiff. carcinoma	6	(0.2%)
Other carcinoma	7	(0.3%)
Sarcoma	0	(0.0%)
Carcinosarcoma	22	(0.9%)
Malignant melanoma	8	(0.3%)
Dysplasia	3	(0.1%)
Other	20	(0.8%)
Unkown	38	(1.5%)
Total	2528	
Missing	17	

SCC: Squamous cell carcinoma

Table 56 Depth of tumor invasion

pT-category	Cases (%)	
pTX	11	(0.4%)
pT0	38	(1.5%)
pTis	29	(1.1%)
pT1a	218	(8.6%)
pT1b	614	(24.3%)
pT2	375	(14.8%)
pT3	1066	(42.2%)
pT4	145	(5.7%)
Other	0	(0.0%)
Unknown	33	(1.3%)
Total	2529	
Missing	16	

Table 58 Pathological grading of lymph node metastasis (JSED TNM 9th)

Lymph node metastasis	Cases (%)	
pN0	1272	(51.5%)
pN1	333	(13.5%)
pN2	490	(19.8%)
pN3	164	(6.6%)
pN4	177	(7.2%)
Unknown	35	(1.4%)
Total	2471	
Missing	74	

Table 59 Numbers of the metastatic nodes

Numbers of lymph node metastasis	Cases (%)	
0	1057	(42.5%)
1-2	676	(27.2%)
3-6	487	(19.6%)
7-	268	(10.8%)
Total	2488	
Missing	57	

Table 60 Pathological findings of distant organ metastasis

Distant metastasias (M)	Cases (%)	
MX	27	(1.1%)
M0	2476	(97.6%)
M1	35	(1.4%)
Total	2538	
Missing	7	

Table 61 Residual tumor

Residual tumor (R)	Cases (%)	
RX	157	(6.2%)
R0	2103	(83.6%)
R1	132	(5.2%)
R2	124	(4.9%)
Unknown	0	(0.0%)
Total	2516	
Missing	29	

Table 72 Causes of death

* As of August 31, 2010

Cause of death	Cases (%)
Death due to recurrence	891 (74.1%)
Death due to other cancer	52 (4.3%)
Death due to other disease (rec+)	22 (1.8%)
Death due to other disease (rec-)	138 (11.5%)
Death due to other disease (rec?)	15 (1.2%)
Operative death*	21 (1.7%)
Postoperative hospital death**	27 (2.2%)
Unknown	36 (3.0%)
Total of death cases	1202
Missing	15

rec: recurrence

* Death within 30 days, **Death after 30 days

Follow-up period (years)	
Median (min - max)	2.75 (0.00 - 7.41)

Fig. 8 Survival of patients treated by esophagectomy

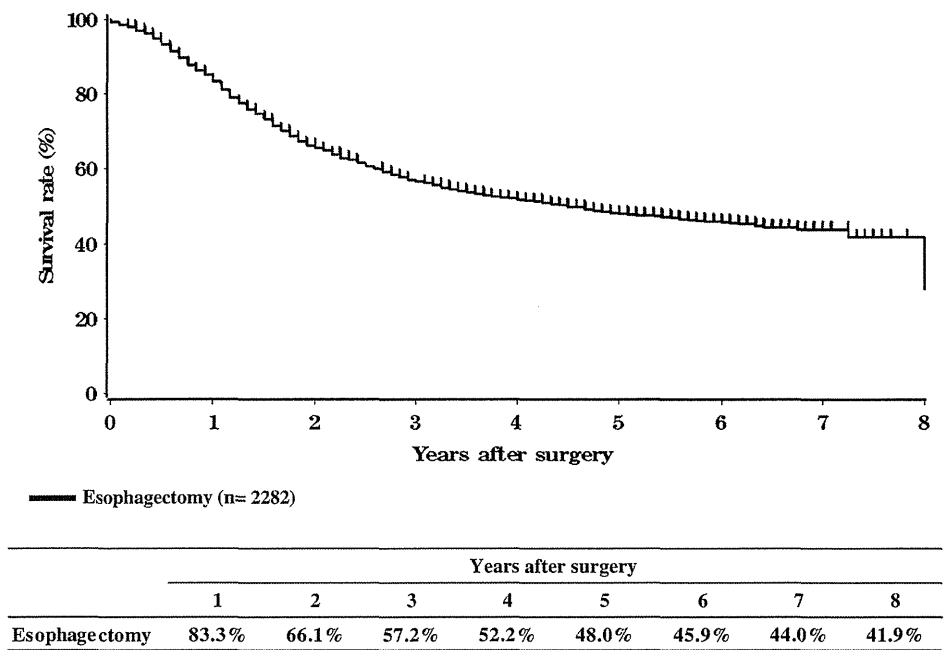


Fig. 9 Survival of patients treated by esophagectomy in relation to clinical stage (JSED TNM 9th)

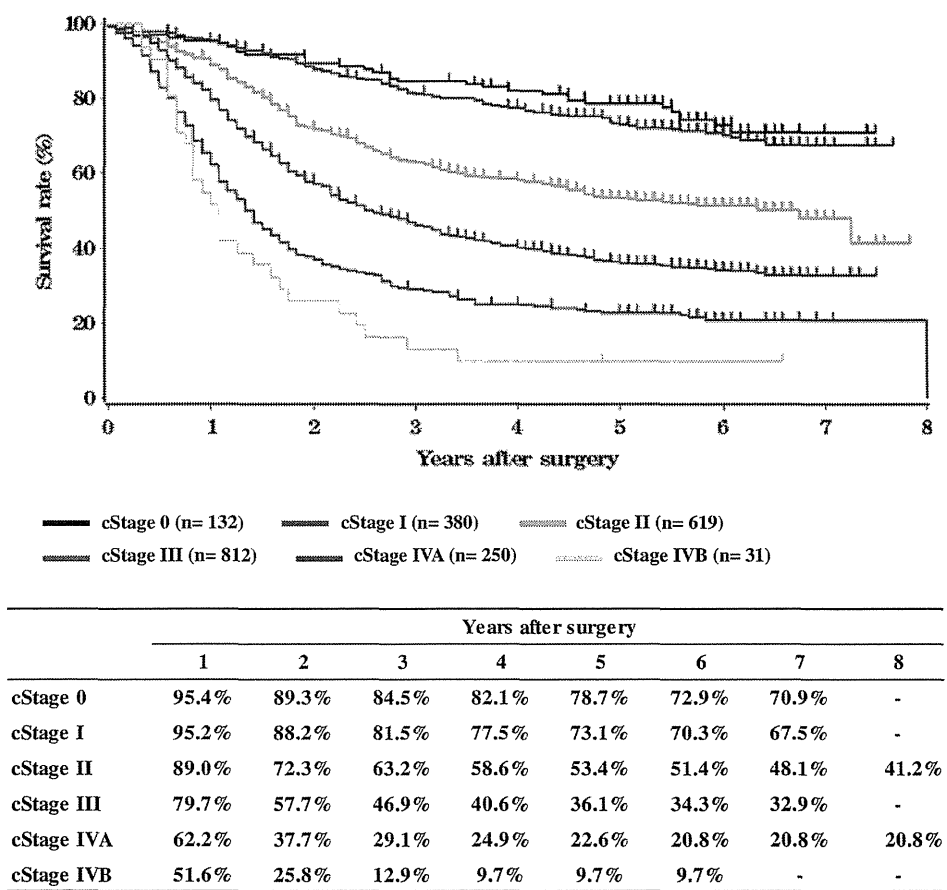
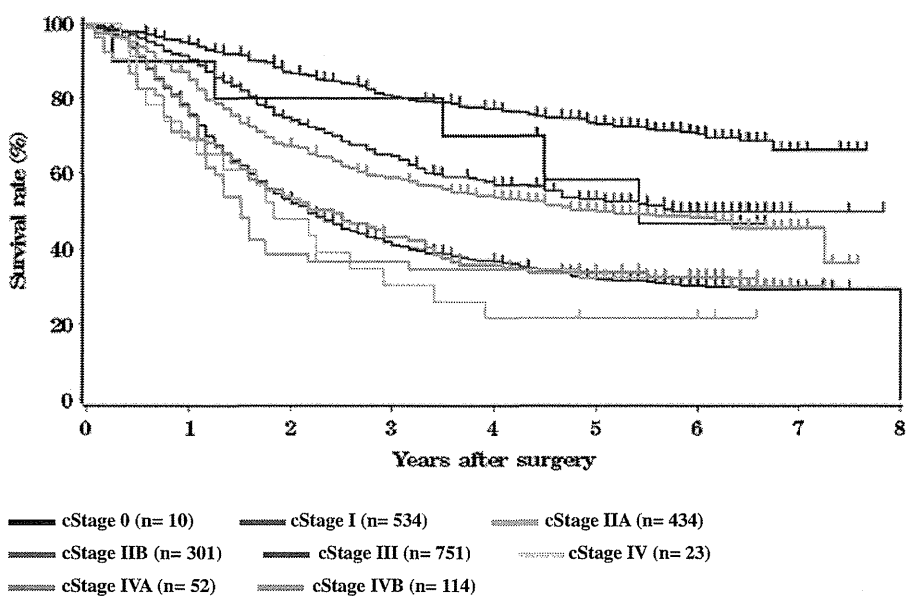
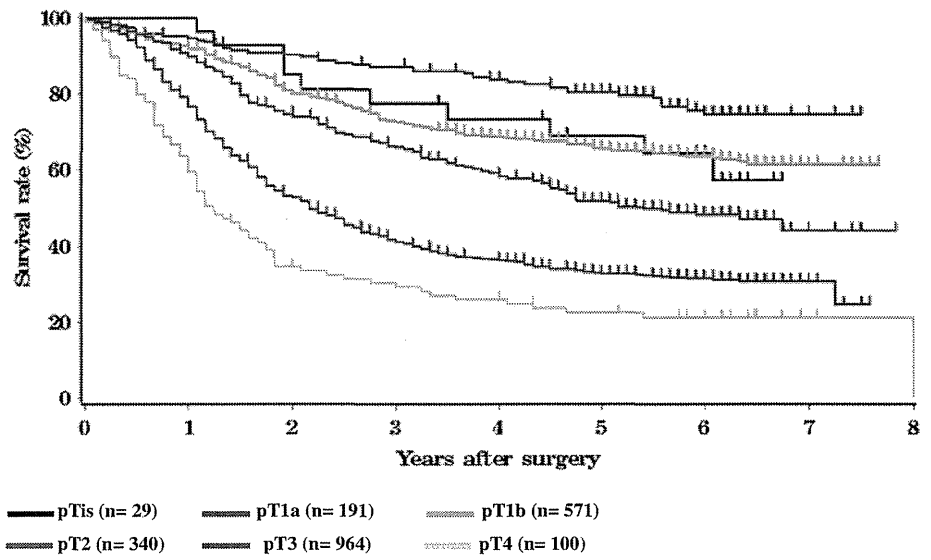


Fig. 10 Survival of patients treated by esophagectomy in relation to clinical stage (UICC TNM 6th)



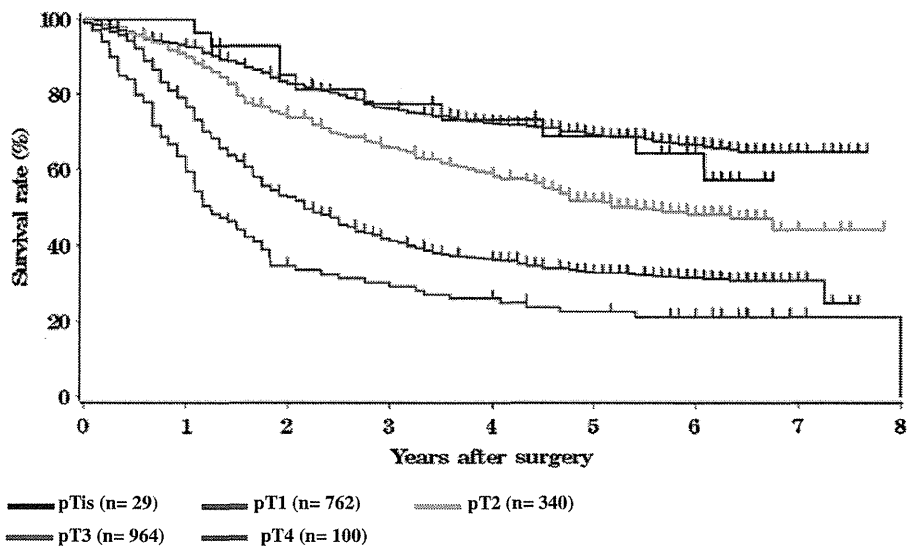
	Years after surgery							
	1	2	3	4	5	6	7	8
cStage 0	90.0%	80.0%	80.0%	70.0%	58.3%	46.7%	46.7%	-
cStage I	94.7%	86.8%	80.9%	77.2%	73.0%	70.5%	66.2%	-
cStage IIA	85.1%	67.4%	58.8%	54.0%	49.9%	48.1%	45.5%	36.4%
cStage IIB	90.6%	74.8%	65.1%	58.0%	53.1%	49.9%	49.9%	49.9%
cStage III	75.6%	52.9%	41.7%	37.0%	32.0%	30.4%	29.5%	29.5%
cStage IV	69.6%	47.8%	30.4%	21.7%	21.7%	21.7%	-	-
cStage IVA	69.2%	38.5%	36.5%	34.5%	32.5%	32.5%	-	-
cStage IVB	75.3%	53.8%	43.0%	35.7%	33.8%	32.6%	30.1%	-

Fig. 11 Survival of patients treated by esophagectomy in relation to the depth of tumor invasion: pT (JSED TNM 9th)



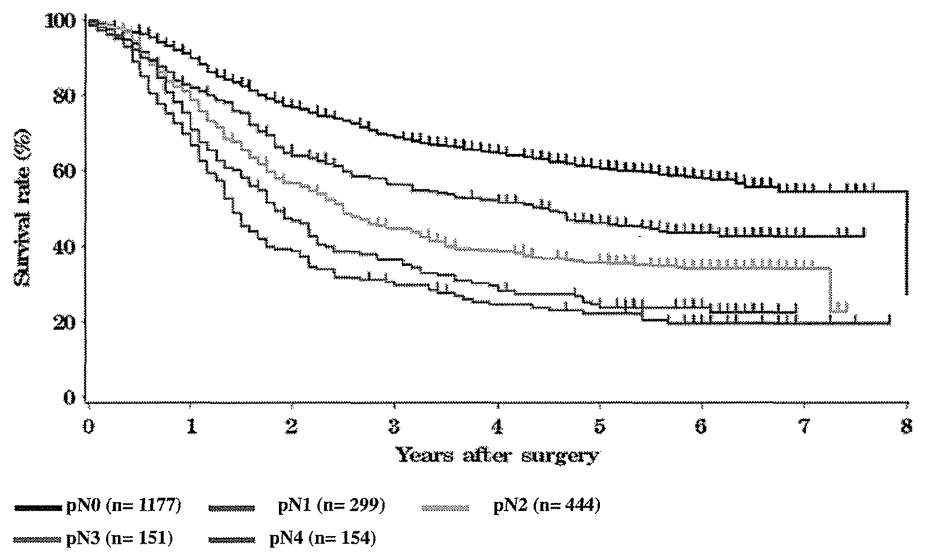
	Years after surgery							
	1	2	3	4	5	6	7	8
pTis	100.0%	85.1%	77.4%	73.3%	69.0%	64.4%	-	-
pT1a	94.7%	90.4%	87.1%	83.8%	80.4%	74.7%	74.7%	-
pT1b	92.0%	80.8%	72.9%	68.7%	65.6%	63.6%	61.4%	61.4%
pT2	89.9%	74.6%	66.3%	59.3%	51.7%	48.2%	44.0%	44.0%
pT3	76.6%	53.1%	41.7%	36.6%	32.8%	31.5%	30.8%	-
pT4	59.5%	34.6%	30.3%	26.0%	22.5%	21.2%	21.2%	21.2%

Fig. 12 Survival of patients treated by esophagectomy in relation to the depth of tumor invasion: pT (UICC TNM 6th)



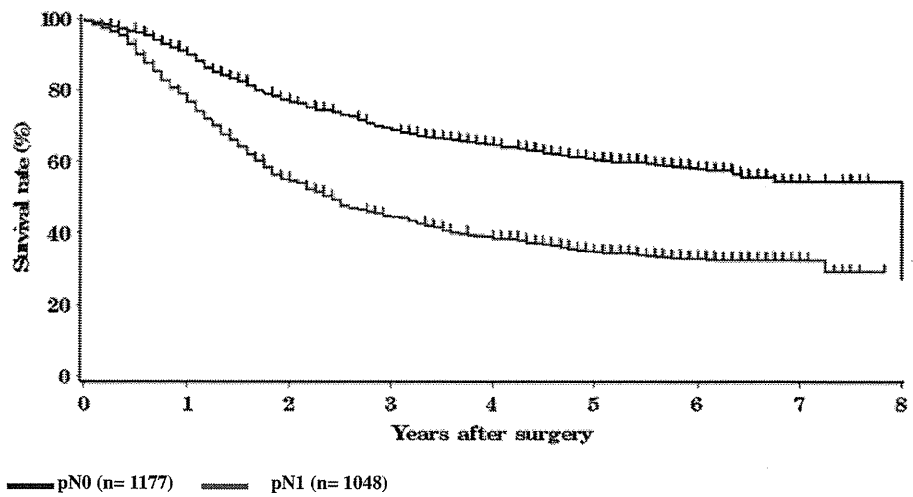
	Years after surgery							
	1	2	3	4	5	6	7	8
pTis	100.0%	85.1%	77.4%	73.3%	69.0%	64.4%	-	-
pT1	92.7%	83.3%	76.5%	72.6%	69.3%	66.5%	64.7%	64.7%
pT2	89.9%	74.6%	66.3%	59.3%	51.7%	48.2%	44.0%	44.0%
pT3	76.6%	53.1%	41.7%	36.6%	32.8%	31.5%	30.8%	-
pT4	59.5%	34.6%	30.3%	26.0%	22.5%	21.2%	21.2%	21.2%

Fig. 13 Survival of patients treated by esophagectomy in relation to lymph node metastasis: pN (JSED TNM 9th)



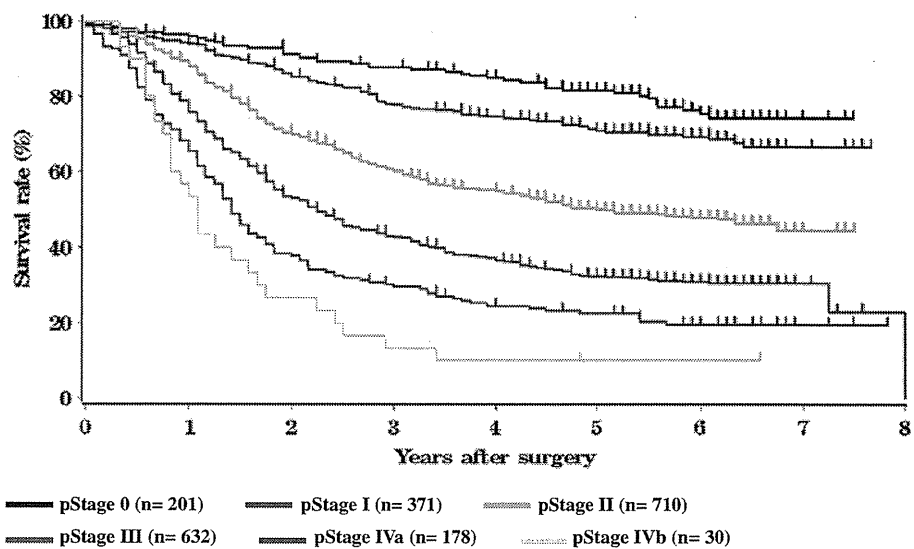
	Years after surgery							
	1	2	3	4	5	6	7	8
pN0	89.8%	77.1%	69.4%	64.9%	60.4%	57.9%	54.3%	54.3%
pN1	82.1%	64.5%	56.4%	52.1%	46.1%	43.4%	42.5%	42.5%
pN2	78.7%	56.5%	44.7%	38.7%	35.7%	34.0%	34.0%	22.7%
pN3	70.7%	47.2%	36.3%	29.4%	23.7%	23.7%	22.4%	-
pN4	66.5%	39.1%	30.3%	24.4%	22.1%	19.5%	19.5%	19.5%

Fig. 14 Survival of patients treated by esophagectomy in relation to lymph node metastasis: pN (UICC TNM 6th)



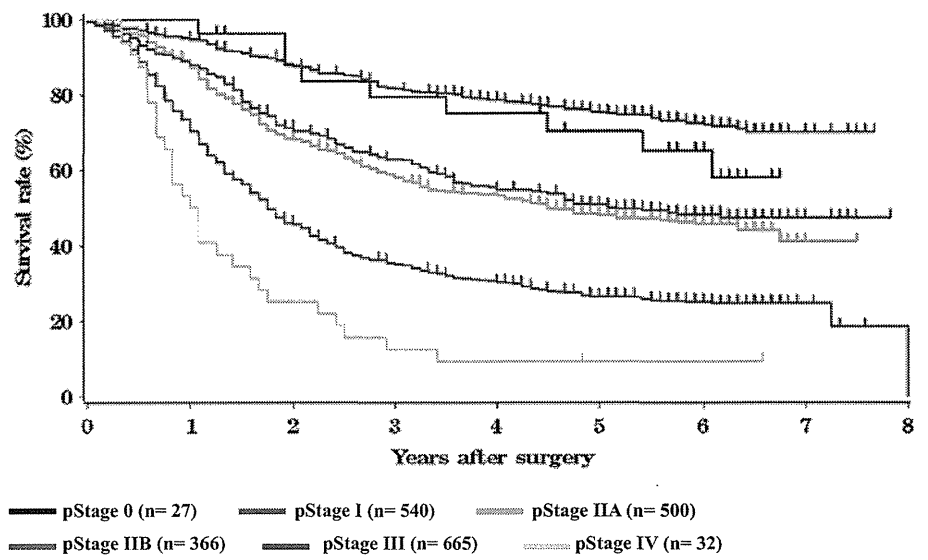
	Years after surgery							
	1	2	3	4	5	6	7	8
pN0	89.8%	77.1%	69.4%	64.9%	60.4%	57.9%	54.3%	54.3%
pN1	76.7%	54.9%	44.7%	39.1%	34.9%	33.0%	32.5%	29.3%

Fig. 15 Survival of patients treated by esophagectomy in relation to pathological stage (JSED TNM 9th)



	Years after surgery							
	1	2	3	4	5	6	7	8
pStage 0	96.0%	91.3%	87.7%	85.0%	81.6%	75.5%	74.3%	74.3%
pStage I	94.0%	85.8%	78.1%	74.6%	71.0%	69.5%	66.5%	66.5%
pStage II	88.0%	70.3%	60.8%	55.2%	50.0%	47.8%	44.4%	44.4%
pStage III	75.8%	53.2%	42.9%	37.3%	32.4%	31.1%	30.7%	23.0%
pStage IVa	65.4%	38.3%	30.2%	24.6%	22.5%	19.6%	19.6%	19.6%
pStage IVb	53.3%	26.7%	17.1%	13.3%	10.0%	10.0%	10.0%	-

Fig. 16 Survival of patients treated by esophagectomy in relation to pathological stage (UICC TNM 6th)



	Years after surgery							
	1	2	3	4	5	6	7	8
pStage 0	96.2%	87.8%	79.4%	75.0%	70.3%	65.3%	58.1%	-
pStage I	94.7%	88.0%	81.8%	78.6%	75.3%	72.2%	70.1%	70.1%
pStage IIA	87.3%	68.5%	58.9%	53.5%	47.9%	45.9%	41.1%	41.1%
pStage IIB	87.8%	71.2%	62.9%	55.6%	50.7%	48.2%	47.5%	47.5%
pStage III	70.3%	45.7%	35.3%	30.6%	26.5%	25.0%	24.7%	18.5%
pStage IV	50.0%	25.0%	12.5%	9.4%	9.4%	9.4%	-	-