

研究成果の刊行に関する一覧表

書籍

著者氏名	論文タイトル名	書籍全体の編集者名	書籍名	出版社名	出版地	出版年	ページ
Sugimura H et al.	Glioblastoma: Germline mutation of TP53.	Hayat M A	Tumors of the central nervous system	Springer	Heidelberg	2011	31-38
Shinmura K and Sugimura H	Centrosome Abnormality and Human Lung Cancer	Irusen E M	Lung Diseases - Selected State of the Art Reviews,	InTech	Rijeka, Croatia	2012	171-188

雑誌

発表者氏名	論文タイトル名	発表誌名	巻号	ページ	出版年
Wang J, Dong Y, Wang X, Ma H, Sheng Z, Li G, Lu G, Sugimura H, and Zhou X.	Expression of EphA1 in gastric carcinomas is associated with metastasis and survival.	Oncol Rep	24(6)	1577-84	2010
Tsuboi M, Mori H, Bunai T, Kageyama S, Suzuki M, Okudela K, Takamochi K, Ogawa H, Niwa H, Shinmura K, and Sugimura H.	Secreted form of EphA7 in lung cancer.	Int J Oncol	36	635-40	2010
Toyoshima M, Chida K, Kono M, Kaida Y, Nakamura Y, Suda T, and Sugimura H.	IgG4-related lung disease in a worker occupationally exposed to asbestos.	Intern Med	49(12)	1175-8	2010
Tao H, Shinmura K, Yamada H, Maekawa M, Osawa S, Takayanagi Y, Okamoto K, Terai T, Mori H, Nakamura T, and Sugimura H.	Identification of 5 novel germline APC mutations and characterization of clinical phenotypes in Japanese patients with classical and attenuated familial adenomatous polyposis.	BMC Res Notes	3(1)	305	2010
Sugimura H, Wang JD, Mori H, Tsuboi M, Nagura K, Igarashi H, Tao H, Nakamura R, Natsume H, Kahyo T, Shinmura K, Konno H, Hamaya Y, Kanaoka S, Kataoka H and Zhou X J.	EPH-EPHRIN in human gastrointestinal cancers.	World J Gastrointest Oncol	2(12)	421-8	2010

Sugimura H, Mori H, Nagura K, Kiyose S, Hong T, Iozaki M, Igarashi H, Shinmura K, Hasegawa A, Kitayama Y and Tanioka F.	Fluorescence in situ hybridization analysis with a tissue microarray: 'FISH and chips' analysis of pathology archives.	Pathol Int	60 (8)	543-50	2010
Sugimoto M, Nishino M, Kodaira C, Yamade M, Ikuma M, Tanaka T, Sugimura H, Hishida A, Furuta T.	Esophageal mucosal injury with low-dose aspirin and its prevention by rabeprazole.	J Clin Pharmacol.	50 (3)	320 - 30	2010
Shinmura K , Tao H, Nagura K, Goto M, Matsuura S, Mochizuki T, Suzuki K, Tanahashi M, Niwa H, Ogawa H, Sugimura H.	Suppression of hydroxyurea-induced centrosome amplification by NORE1A and down-regulation of NORE1A mRNA expression in non-small cell lung carcinoma.	Lung Cancer	71 (1)	19-27	2011
Shinmura K, Kageyama S, Igarashi H, Kamo T, Mochizuki T, Suzuki K, Takahashi M, Niwa H, Ogawa H and Sugimura H.	EML4-ALK fusion transcripts in immunohistochemically ALK-positive non-small cell lung carcinomas.	Experimental and therapeutic medicine	1	271-275	2010
Sato N, Kageyama S, Chen R, Suzuki M, Mori H, Tanioka F, Yamada H, Kamo T, Tao H, Shinmura K, Nozawa A, Sugimura H.	Association between neuropeptide Y receptor 2 polymorphism and the smoking behavior of elderly Japanese.	J Hum Genet	55 (1 1)	755-60	2010
Sato N, Kageyama S, Chen R, Suzuki M, Tanioka F, Kamo T, Shinmura K, Nozawa A and Sugimura H.	Association between neurexin 1 (NRXN1) polymorphisms and the smoking behavior of elderly Japanese.	Psychiatr Genet	20 (3)	135-6	2010
Morita Y, Ikegami K, Goto-Inoue N, Hayasaka T, Zaima N, Tanaka H, Uehara T, Setoguchi T, Sakaguchi T, Igarashi H, Sugimura H, Setou M, Konno H.	Imaging mass spectrometry of gastric carcinoma in formalin-fixed paraffin-embedded tissue microarray.	Cancer Sci	10 1(1)	267-273	2010
Goto M, Shinmura K, Tao H, Tsugane S and Sugimura H.	Three novel NEIL1 promoter polymorphisms in gastric cancer patients.	World Journal of Gastrointestinal Oncology	2(2)	117-120	2010
Goto M, Shinmura K, Nakabeppu Y, Tao H,	Adenine DNA glycosylase activity of 14 Human MutY	Hum Mutat	31	E1861-7 4	2010

Yamada H, Tsuneyoshi T, Sugimura H.	homolog (MUTYH) variant proteins found in patients with colorectal polyposis and cancer.				
Chou PH, Kageyama S, Matsuda S, Kanemoto K, Sasada Y, Oka M, Shinmura K, Mori H, Kawai K, Kasai H, Sugimura H, Matsuda T.	Detection of lipid peroxidation-induced DNA adducts caused by 4-oxo-2(E)-nonenal and 4-oxo-2(E)-hexenal in human autopsy tissues.	Chem Res Toxicol	23(9)	1442-8	2010
Akieda-Asai S, Zaima N, Ikegami K, Kahyo T, Yao I, Hatanaka T, Iemura S, Sugiyama R, Yokozeki T, Eishi Y, Koike M, Ikeda K, Chiba T, Yamaza H., Shimokawa I, Song SY, Matsuno A, Mizutani A, Sawabe M, Chao MV, Tanaka M, Kanaho Y, Natsume T, Sugimura H, Date Y, McBurney MW, Guarente L and Setou M.	SIRT1 Regulates Thyroid-Stimulating Hormone Release by Enhancing PIP5Kgamma Activity through Deacetylation of Specific Lysine Residues in Mammals.	PLoS One	5(7)	E11755	2010
Yamada H, Sugimura H et al.	Germline alterations in the CDH1 gene in familial gastric cancer in the Japanese population.	Cance Science	102	1782 – 88	2011
Sugimura H et al.	Genetic susceptibility to lung cancer.	Front Biosci (Schol Ed)	3	1463 - 77	2011
Kahyo T, Sugimura H et al.	A novel tumor-derived SGOL1 variant causes abnormal mitosis and unstable chromatid cohesion.	Oncogene	30	4453 - 63	2011
Ella E, Sugimura H et al.	Association between dopamine beta hydroxylase rs5320 polymorphism and smoking behaviour in elderly Japanese.	J Hum Genet	57	385-390	2012
Koyose S, sugimura H et al.	Chromogenic in situ hybridization(CISH) to detect HER2 gene amplification in breast and gastric cancer: comparison with immunohistochemistry (IHC) and fluorescence in	Pathology International	62	728-734	2012

	situ hybridization (FISH).				
Koyose S, sugimura H et al.	Detection of kinase amplifications in gastric cancer archives using fluorescence in situ hybridization.	Pathology International	62	474-484	2012
Sato N, Sugimura H, et al.	Assessment Scales of Nicotine Addiction.	Journal of Addiction Research & Therapy.	S1	1-8	2012
Toyoshima M, Sugimura H, et al.	Endobronchial metastasis from gastrinoma of the pancreas.	Am J Respir Crit Care Med	185	590-591	2012
Inaba K, Sugimura H, et al.	Hepatocellular adenoma associated with familial adenomatous polyposis coli.	World J Hepatol	4	322-326	2013
Matsuda T, Sugimura H, et al.	Lipid peroxidation-induced DNA adducts in human gastric mucosa.	Carcinogenesis	34	121-127	2013
Sugimura H, et al.	Familial gastric cancer - an update of Japanese cases.	Gan To Kagaku Ryoho	40	154-158	2013
Sugimoto S, Yamada H, Takahashi M, Morohoshi Y, Yamaguchi N, Tsunoda Y, Hayashi H, Sugimura H, Komatsu H.	Early-onset diffuse gastric cancer associated with a de novo large genomic deletion of CDH1 gene.	Gastric Cancer			2013
Kahyo T, Tao H, Shinmura K, Kamo T, Igarashi H, Maruyama K, Tajima M, Ogawa H, Tanahashi M, Niwa H, Funai K, Kohno T, Suda T & Sugimura H.	Identification and association study with lung cancer for novel insertion polymorphisms of human endogenous retrovirus.	Carcinogenesis.	34	2531-2538	2013
Matsuura S, Shinmura K, Iwaizumi M, Yamada H, Funai K, Kobayashi J, Tanahashi M, Niwa H, Ogawa H, Takahashi T, Inui N, Suda T, CHida K, Watanabe Y & Sugimura H.	CD74-ROS1 fusion transcripts in resected non-small cell lung carcinoma.	Oncology Reports	30	1675-1680	2013
Matsuura S, Kahyo T, Shinmura K, Iwaizumi M, Yamada H, Funai K, Kobayashi J, Tanahashi M, Niwa H, Ogawa H, Takahashi T, Inui N, Suda T, CHida K, Watanabe Y & Sugimura H.	SGOL1 variant B induces abnormal mitosis and resistance to taxane in non-small cell lung cancers.	Sci Rep.			2013
Shinmura K, Kato H, Matsuura S, Inoue Y, Igarashi H, Nagura K, Nakamura S, Maruyama K, Tajima M, Funai K, Ogawa H, Tanahashi M, Niwa H & Sugimura H.	A novel somatic FGFR3 mutation in primary lung cancer.	Oncol Rep.	31	1219-1224	2014

Natsume H, Shinmura K, Tao H, Igarashi H, Suzuki M, Nagura K, Goto M, Yamada H, Maeda M, Konno H, Nakamura S & Sugimura H.	The CRKL gene encoding an adaptor protein is amplified, overexpressed, and a possible therapeutic target in gastric cancer.	J Transl Med.	10		2012
Sugimura H.	How can research fields be integrated with PET imaging?	Gastric Cancer			2012
Suzuki S, Toyoshima M, Nihashi F, Tsukui H, Baba S, Sugimura H & Suda T.	An autopsy case of malignant pleural mesothelioma associated with nephrotic syndrome.	Intern Med	53	243-246	2014
Suzuki S, Tanioka F, Minato H, Ayhan A, Kasami M & Sugimura H.	Breakages at YWHAЕ, FAM22A, and FAM22B loci in uterine angiosarcoma: a case report with immunohistochemical and genetic analysis.	Pathol Res Pract.	210	130-134	2014
Suzuki S, Kurabe N, Minato H, Ohkubo A, Ohnishi I, Tanioka F & Sugimura H	A rare Japanese case with a NUT midline carcinoma in the nasal cavity: A case report with immunohistochemical and genetic analyses.	Pathol Res Pract,	210	383-388	2014
Shinmura K, Goto M, Tao H, Kato H, Suzuki R, Nakamura S, Matsuda T, Yin G, Morita M, Kono S & Sugimura H.	Impaired 8-Hydroxyguanine Repair Activity of MUTYH Variant p.Arg109Trp Found in a Japanese Patient with Early-Onset Colorectal Cancer.	Oxid Med Cell Longev			2014
Harada M, Kotake Y, Ohhata T, Kitagawa K, Niida H, Matsuura S, Funai K, Sugimura H, Suda T & Kitagawa M.	YB-1 promotes transcription of cyclin D1 in human non-small-cell lung cancers.	Genes Cells			2014
Takayama T, Takaoka N, Nagata M, Johnin K, Okada Y, Tanaka S, Kawamura M, Inokuchi T, Ohse M, Kuhara T, Tanioka F, Yamada H, Sugimura H & Ozono S.	Ethnic differences in GRHPR mutations in patients with primary hyperoxaluria type 2.	Clin Genet.			2013
Sugimura H & Osawa S.	Internal frontier: the pathophysiology of the small intestine.	World J Gastroenterol,	19	161-164	2013
Sugimura H.	An obsession with subtyping gastric cancer.	Gastric Cancer	16	451-453	2013
Shimizu K, Funai K, Sugimura H, Sekihara K, Kawase A & Shiiya N.	D2-40-positive lymphatic vessel invasion is not a poor prognostic factor in stage I lung adenocarcinoma.	Pathol Int	63	201-205	2013
Kurabe N, Hayasaka T, Ogawa M, Masaki N, Ide Y, Waki M, Nakamura T, Kurachi K, Kahyo T, Shinmura K, Midorikawa Y,	Accumulated phosphatidylcholine (16:0/16:1) in human colorectal cancer; possible involvement of LPCAT4.	Cancer Sci,	104	1295-1302	2013

Kurabe N, Hayasaka T, Igarashi H, Mori H, Sekihara K, Tao H, Yamada H, Kahyo T, Onishi I, Tsukui H, Kawase A, Matsuura S, Inoue Y, Shinmura K, Funai K, Setou M & Sugimura H.	Visualization of phosphatidylcholine (16:0/16:0) in type II alveolar epithelial cells in the human lung using imaging mass spectrometry.	Pathol Int	63	195-200	2013
Kahyo T, Sugimura H.	Establishment and characterization of a mutagenized cell line exhibiting the 'cell-in-cell' phenotype at a high frequency.	Genes Cells	18	1042-1052	2013
Shinmura K, Kiyose S, Nagura K, Igarashi H, Inoue Y, Nakamura S, Maeda M, Baba M, Konno H & Sugimura H.	TNK2 gene amplification is a novel predictor of a poor prognosis in patients with gastric cancer.	J Surg Oncol	109	189-197	2014
Shinmura K, Goto M, Tao H, Matsuura S, Matsuda T & Sugimura H.	Impaired suppressive activities of human MUTYH variant proteins against oxidative mutagenesis.	World J Gastroenterol	18	6935-6942	2012
Makita R, Yamashita M, Fujie M, Yamaoka M, Kiyofuji K, Yamada M, Yamashita J, Tsunekawa K, Asai K, Suyama T, Toda M, Tanaka Y, Sugimura H, Magata Y, Ohnishi K & Nakamura S.	Research on phospho sugar analogues to develop novel multiple type molecular targeted antitumor drugs against various types of tumor cells.	Phosphorus, Sulfur and Silicon	188	213-223	2013
Ogino H, Nakayama R, Sakamoto H, Yohisda T, Sugimura T, Masutani T.	Analysis of poly (ADP-ribose) polymerase-1 (PARP1) gene alteration in human germ cell tumor cell lines.	Cancer Genet Cytogenet.	197(1)	8-15	2010
Andoh M, Sato Y, Sakamoto H, Yoshida T, Ohtaki M.	Detection of inappropriate samples in association studies by an IBS-based method considering linkage disequilibrium between genetic markers.	J Hum Genet.	55	436-440	2010
Yoshida T, Ono H, Kuchiba A, Saeki N, Sakamoto H.	Genome-wide germline analyses on cancer susceptibility and GeMDBJ database: Gastric cancer as an example.	Cancer Sci	101(7)	1582-1589	2010
Low S-K, Kuchiba A, Zembutsu H, Saito A, Takahashi A, Kubo M, Daigo Y, Kamatani N, Chiku S, Totsuka H, Ohnami S, Hirose H, Shimada K, Okusaka T, Yoshida T, Nakamura Y, Sakamoto H.	Genome-wide association study of pancreatic cancer in Japanese population.	PLoS One	5(7)	e11824	2010

Sangrajrang S, Sato Y, Sakamoto H, Ohnami S, Khuhapreme T, Yoshida T.	Genetic polymorphisms in folate and alcohol metabolism and breast cancer risk a case-control study in Thai women.	Breast Cancer Res Treat.	12 3	885-893	2010
Sato Y, Yamamoto N, Kunitoh H, Ohe Y, Minami H, Laird NM, Katori N, Saito Y, Ohnami S, Sakamoto H, Sawada J, Saijo N, Yoshida T, Tamura T.	Genome-wide association study on overall survival of advanced non-small cell lung cancer patients treated with carboplatin and paclitaxel.	J Thorac Oncol.	6(1)	132-138	2011
Saeki N, Saito A, Choi IJ, Matsuo K, Ohnami S, Totsuka H, Chiku S, Kuchiba A, Lee YS, Yoon KA, Kook MC, Park SR, Kim YW, Tanaka H, Tajima K, Hirose H, Tanioka F, Matsuno Y, Sugimura H, Kato S, Nakamura T, Nishina T, Yasui W, Aoyagi K, Sasaki H, Yanagihara K, Katai H, Shimoda T, Yoshida T, Nakamura Y, Hirohashi S, Sakamoto H.	A functional SNP in MUC1, at chromosome 1q22, determines susceptibility to diffuse-type gastric cancer Short title: MUC1 is a gastric cancer susceptibility gene.	Gastroenterology	14 0(3)	892-902	2011
Totoki Y, Tatsuno K, Yamamoto S, Arai Y, Hosoda F, Ishikawa S, Tsutsumi S, Sonoda K, Totsuka H, Shirakihara T, Sakamoto H, Wang L, Ojima H, Shimada K, Kosuge T, Okusaka T, Kato K, Kusuda J, Yoshida T, Aburatani H, Shibata T.	High-resolution characterization of a hepatocellular carcinoma genome.	Nat Genet	43	464-469	2011
Shiraishi K, Sakamoto H, Kohno T, et al.	A genome-wide association study identifies two new susceptibility loci for lung adenocarcinoma in the Japanese population.	Nature Genetics	44	900-903	2012
Ono H, Sakamoto H, et al.	Prostate stem cell antigen gene is expressed in islets of pancreas.	Anat Cell Biol	45	149-154	2012
Ono H, Sakamoto H, et al.	Association of dietary and genetic factors related to one-carbon metabolism with global methylation level of leukocyte DNA.	Cancer Sci.	10 3	2159-21 64	2012
Saeki N, Sakamoto H, et	Genetic factors related to	Cancer Sci.	10	1-8	2013

al.	gastric cancer susceptibility identified using a genome-wide association study		4		
Fujita T, Sakamoto H, Kohno T, et al.	Intraperitoneal delivery of a small interfering RNA targeting NEDD1 prolongs the survival of scirrhus gastric cancer model mice.	Cancer Sci.	104	214-222	2013
Suzuki T, Shibata T, Takaya K, Shiraishi K, Kohno T, Kunitoh H, Tsuta K, Furuta K, Goto K, Hosoda F, Sakamoto H, Motohashi H, Yamamoto M	Regulatory nexus of synthesis and degradation deciphers cellular Nrf2 expression levels.	Mol Cell Biol.	33(12)	2402-2412	2013
Mizukami T, Shiraishi K, Shimada Y, Ogiwara H, Tsuta K, Ichikawa H, Sakamoto H, Kato M, Shibata T, Nakano T, Kohno T.	Molecular mechanisms underlying oncogenic RET fusion in lung adenocarcinoma.	J Thoracic Oncol.	9(5)	622-630	2014
Saeki N, Sakamoto H, Yoshida T.	Mucin 1 gene (MUC1) and gastric-cancer susceptibility.	Int J Mol Sci	15	7958-7973	2014
Arai E, Sakamoto H, Ichikawa H, Totsuka H, Chiku S, Gotoh M, Mori T, Nakatani T, Ohnami S, Nakagawa T, Fujimoto H, Wang L, Aburatani H, Yoshida T, Kanai Y.	Multilayer-omics analysis of renal cell carcinoma, including the whole exome, methylome and transcriptome.	Int J Cancer		in press	2014
Nakaoku T, Tsuta K, Ichikawa H, Shiraishi K, Sakamoto H, Enari M, Furuta K, Shimada	Druggable oncogene fusions in invasive mucinous lung adenocarcinoma.	Clinical Cancer Res.		in press	2014
Shiraishi K, Kohno T, Tanai C, Goto Y, Kuchiba A, Yamamoto S, Tsuta T, Nokihara H, Yamamoto Y, Sekine I, Ohe Y, Tamura T, Yokota J, Kunitoh H.	Association of DNA Repair gene polymorphisms with response to platinum-based doublet chemotherapy in non-small cell lung cancer patients.	J Clin Oncol	28	4945-4952	2010
Kohno T, Kunitoh H, Mimaki S, Shiraishi K, Kuchiba A, Yamamoto S, Yokota J.	Contribution of the TP53, OGG1, CHRNA3 and HLA-DQA1 genes to the risk for lung squamous cell carcinoma.	J Thorac Oncol	6	813-817	2011
Kohno T, Kunitoh H,	Individuals susceptible	Carcinogenes	31	834-841	2010

Shimada Y, Shiraishi K, Ishii Y, Goto K, Ohe Y, Nishiwaki Y, Kuchiba A, Yamamoto S, Hirose H, Oka A, Yanagitani N, Saito R, Inoko H, Yokota J.	to lung adenocarcinoma defined by combined HLA-DQA1 and TERT genotypes.	is			
Kohno T, Kakinuma R, Iwasaki M, Yamaji T, Kunitoh H, Suzuki K, Shimada Y, Shiraishi K, Kasuga Y, Hamada G, Furuta K, Tsuta K, Sakamoto H, Kuchiba A, Yamamoto S, Kanai Y, Tsugane S, Yokota J.	Association of CYP19A1 polymorphisms with risks for atypical adenomatous hyperplasia and bronchioloalveolar carcinoma in the lungs.	Carcinogenesis	31	1794-1799	2010
Yokota J, Shiraishi K, Kohno T.	Genetic basis for susceptibility to lung cancer: Recent progress and future directions.	Adv Cancer Res	109	51-72	2010
Kohno T, Otsuka A, Girard L, Sato M, Iwakawa R, Ogiwara H, Sanchez-Cespedes M, Minna JD, Yokota J.	A catalog of genes homozygously deleted in human lung cancer and the candidacy of PTPRD as a tumor suppressor gene.	Genes Chromosomes Cancer	49	342-352	2010
Iwakawa R, Kohno T, Enari M, Kiyono T, Yokota J.	Prevalence of human papillomavirus 16/18/33 infection and p53 mutation in lung adenocarcinoma.	Cancer Sci	101	1891-1896	2010
Okayama H, Kohno T, Sakamoto H et al.	Identification of Genes Upregulated in ALK-Positive and EGFR/KRAS/ALK-Negative Lung Adenocarcinomas.	Cancer Res.	72	100 - 111	2012
Lan Q, Kohno T, et al.	Genome-wide association analysis identifies new lung cancer susceptibility loci in never-smoking women in Asia.	Nature Genetics	44	1330-1335	2012
Kohno T, Sakamoto H, et al.	KIF5B-RET fusions in lung adenocarcinoma.	Nature Medicine	18	375-377	2012
Kohno T, et al	RET fusion gene: translation to personalized lung cancer therapy.	Cancer Sci	104	1396-1400	2013
Oike T, Kohno T et al	A synthetic lethality-based strategy to treat cancers	Cancer Res	73	5508-5518	2013

	harboring a genetic deficiency in the chromatin remodeling factor BRG1.				
Chen LS, Kohno T, et al.	Smoking and genetic risk variation across populations of European, Asian, and African American ancestry-a meta-analysis of chromosome 15q25.	Genet Epidemiol.	36	340-351	2012

III. 研究成果の刊行物・別刷

Expression of EphA1 in gastric carcinomas is associated with metastasis and survival

JIANDONG WANG^{1,2}, YINGCHUN DONG¹, XULIN WANG³, HENGHUI MA¹, ZHEN SHENG¹,
GULI LI³, GUANGMING LU², HARUHIKO SUGIMURA⁴ and XIAOJUN ZHOU¹

Departments of ¹Pathology, ²Radiology and ³Surgery, Nanjing Jinling Hospital, Nanjing University School of Medicine, Nanjing 210002, P.R. China; ⁴Department of Pathology of Hamamatsu University School of Medicine, 1-20-1, Handayama, Hamamatsu 431-3192, Japan

Received April 29, 2010; Accepted June 17, 2010

DOI: 10.3892/or_00001020

Abstract. Receptor tyrosine kinases of the Eph subfamily are involved in the development and the carcinogenesis of certain cancers. In this study we investigated expression of EphA1 in gastric carcinomas, and analyzed associations between EphA1 expression and clinicopathological parameters to investigate the role of EphA1 in gastric carcinoma. The level of EphA1 transcript expression in gastric carcinoma tissue and corresponding normal tissue was determined by quantitative real-time reverse transcriptase polymerase chain reaction (RT-PCR). The status of the CpG island associated with the promoter region of EphA1 was assessed by methylation-specific PCR (MSP), and EphA1 protein expression of was examined by immunohistochemical staining (IHC). Down-regulation of EphA1 transcripts was detected in 34% of the cases, up-regulation in 25% of the cases, and no difference in expression in 41% of the cases. The EphA1 transcript expression level was associated with tumor size ($P=0.05$), stage ($P=0.001$), and lymph node metastasis ($P=0.011$). Methylated EphA1 DNA was detected in most of the carcinomas with EphA1 down-regulation that were examined. EphA1 protein expression was associated with depth of wall invasion ($P=0.069$), stage ($P<0.001$), and lymph node metastasis ($P=0.018$). The survival analysis showed that patients whose tumor exhibited EphA1 up-regulation had a poorer outcome than those whose tumor exhibited down-regulation ($P=0.005$) or no difference in expression ($P=0.003$). EphA1 may have roles in invasion and metastasis by gastric carcinoma. The EphA1 expression level is a potential prognostic marker in gastric carcinoma, and the

EphA1 gene may provide a novel target of therapy for gastric carcinoma.

Introduction

Gastric cancer is very common worldwide, especially in Eastern Asia, the Andean regions of South America, and Eastern Europe. Although a steady decline in incidence and mortality rates has been observed, the absolute number of new cases has been increasing annually, and gastric carcinoma is now the second leading cause of cancer deaths worldwide (1). Epidemiological studies have shown that *Helicobacter-pylori* infection is an important factor in the carcinogenesis of gastric carcinoma, and other factors, including diet, alcohol consumption, and tobacco have been shown to be associated with the risk of gastric carcinoma and its precursor lesions. Accumulating evidence has indicated that gastric carcinoma is also associated with various genetic and epigenetic alterations of oncogenes, tumor suppressor genes, DNA repair genes, cell cycle regulators, and cell adhesion molecules (2-9). However, the genetic and epigenetic changes associated with the development, progression, and prognosis of gastric carcinoma are still poorly understood.

Receptor tyrosine kinases of the Eph family and Ephrin ligands play important roles in vascular development, tissue-border formation, cell migration, axon guidance, and angiogenesis, and abnormal expression of Eph receptor tyrosine kinases in cancers is related to malignant transformation, tumor metastasis, tumor differentiation, and outcome. *EphA1*, the first member of the Eph receptor tyrosine kinase family ever discovered, was isolated from erythropoietin-producing hepatocellular carcinoma cell lines and is located on chromosome 7q34 (10). It is widely expressed in normal tissue including lung, small intestinal, kidney, bladder, thymus, and colon tissue (11). The level of *EphA1* expression in human cancers is variable, with overexpression of *EphA1* having been observed in certain types of tumors, including ovarian carcinoma (12), and squamous cell carcinoma of the head and neck (13), and reduced expression detected in prostate cancer cell lines (14), breast carcinoma cell lines (15), and basal cell carcinomas and squamous cell carcinomas of the skin (16). However, the role of EphA1 in the carcinogenesis of digestive tract tumors is unknown. We previously reported

Correspondence to: Dr Xiaojun Zhou, Department of Pathology, Nanjing Jinling Hospital, Nanjing University School of Medicine, Nanjing 210002, P.R. China
E-mail: nanjing_81@yahoo.com

Dr Haruhiko Sugimura, Department of Pathology of Hamamatsu University School of Medicine, 1-20-1, Handayama, Hamamatsu 431-3192, Japan
E-mail: hsugimur@hama-med.ac.jp

Key words: EphA1, gastric carcinoma, metastasis, survival

Table I. Characteristics of 145 patients with gastric carcinoma.

Variable	mRNA and protein	Protein and follow-up	Total no.
Case no.	56	89	145
Gender			
Male	41	64	105
Female	15	25	40
Age (years)			
≤50	9	23	32
>50	47	66	113
Tumor differentiation			
Moderate	26	33	59
Poor	30	56	86
Tumor size (cm)			
<5	25	47	72
≥5	31	42	73
Depth of wall invasion			
Mucosa, submucosa	2	9	11
Muscularis propria	13	13	26
Subserosa, serosa	41	67	108
Stage			
I + II	22	33	55
III + IV	34	56	90
Microscopic subtypes			
Intestinal	38	52	90
Diffuse	15	36	51
Atypical	3	1	4
Lymph node metastasis			
Present	38	60	98
Absent	18	29	47

finding correlations between down-regulation of EphA1 in colorectal carcinomas and invasion and metastasis, and that reduced EphA1 expression is associated with poor overall survival (17), while another study demonstrated that epigenetic silencing of EphA1 expression in colorectal cancer is correlated with poor survival (18). In the present study we evaluated expression of EphA1 in a set of gastric carcinomas and analyzed its association with clinicopathological parameters and survival.

Materials and methods

Gastric carcinoma tissue specimens. All of the tissue samples in this study were collected from 145 patients with gastric carcinoma who underwent surgery at the Nanjing Jinling Hospital. In 56 gastric carcinomas fresh tissue and adjacent normal mucosa were obtained from surgical specimens resected during operations performed between 2005 and 2006, and the fresh tissue samples were frozen in liquid nitrogen immediately after the resection and stored at -80°C

for preparation of the total RNA. The other 89 tissue samples were from formalin-fixed and paraffin-embedded tissue specimens with follow-up data obtained from the Pathology Department, and the specimens were obtained during surgery performed between 2002 and 2006 at Nanjing Jinling Hospital. This study is a part of a gastric carcinoma project approved by the Research Ethics Board of the Nanjing Jinling Hospital, Nanjing University School of Medicine and Hamamatsu University School of Medicine. The tissue specimens examined in our study were diagnosed pathologically. The clinicopathological features of the 145 gastric carcinoma patients are shown in Table I.

Total RNA extraction and quantitative real-time RT-PCR. Total RNA was extracted from tumor tissue and adjacent normal mucosa by homogenizing tissue in TRIzol reagent (Invitrogen, CA, USA) according to the manufacturer's protocol. For reverse transcription, a 2-μg sample of total RNA was used for cDNA synthesis with oligo (dT) primers and M-MLV reverse transcriptase (Promega, Madison, WI, USA) in a final volume of 20 μl. Expression of EphA1 transcripts in the carcinoma samples was detected by subjecting the cDNAs to quantitative real-time reverse transcriptase-polymerase chain reaction (RT-PCR). The reactions were performed in triplicate. The sense and antisense primers and *TaqMan* probe for EphA1 were designed according to the mRNA sequence (GenBank accession number NM_005232). Amplification of PCR fragments spanning different exons was used to prevent contamination by genomic DNA. The sense primer used was 5'-ATCTTTG GGCTGCTGCTTGG-3', and the anti-sense primer was 5'-G CTTGTCCTCTCGATCCACATC-3'. The PCR products were 127 bp long. The *TaqMan* probe used was 5'-(FAM) CGGTCACGCTGCCTCTGCTGCC (Eclipse)-3'. The housekeeping gene glyceraldehyde-3-phosphate dehydrogenase (GAPDH) was used as an internal control (GenBank accession number: NM_002046). The sense primer used was 5'-CCAGGTGGTCTCCTCTGACTT-3', and the anti-sense primer was 5'-GTTGCTGTAGCCAAATTCGTTGT-3'. The PCR products were 130 bp long. The probe used was 5'-(FAM) AACAGCGACACCCACTCCTCCACC (Eclipse)-3'. The *EphA1* mRNA expression values were normalized to *GAPDH* expression. The primers and probes for *EphA1* and *GAPDH* were synthesized by Takara Biotechnology, Inc., (Dalian, China). The reaction mixture consisted of 3.0 μl 10X buffer, 3.0 μl 2.0 μmol/l deoxy-ribonucleoside triphosphates (dNTPs, Invitrogen), 3.0 μl 3 μmol/l sense primer, 3.0 μl 3.0 μmol/l antisense primer, 1.0 μl 3 μmol/l fluorescence probe, 0.20 μl 5U/μl Takara ExTaq Hotstart Taq (Takara Biotechnology), 0.6 μM 5-carboxy-X-rhodamine (ROX) reference dye (Invitrogen), 2.0 μl cDNA template, and distilled water to a total volume of 30 μl. The PCR cycling conditions were: 2 min at 95°C followed by 40 amplification cycles of denaturation at 94°C for 30 sec, annealing at 59°C for 30 sec, and elongation at 72°C for 1 min.

Methylation-specific PCR (MSP). Genomic DNA was modified by sodium bisulfite as we previously described (19). Primers were designed by using the MethPrimer software program on the Internet (<http://www.urogen.org/>)

methprimer/) to discriminate between methylated and unmethylated alleles following sodium bisulfite treatment. Two-microliter aliquots were amplified in a 30- μ l reaction mixture consisting of 1X buffer (10 mM Tris-HCl, 2.0 mM MgCl₂, 50 mM KCl, pH 8.3), 1 U Takara ExTaq Hotstartaq, 260 μ M dNTPs, and 0.3 μ M of the primer sets. The PCR reaction conditions were 2 min at 95°C, then 35 cycles of 94°C for 30 sec, 55°C for 30 sec, and 72°C for 1 min, and finally 10 min at 72°C. The methylation-specific primers were 5'-ATTCGGGTTATTGTTTTAGGTTTC-3' (forward) and 5'-GAAAATCGATACCTTCCTAACG-3' (reverse). The PCR products were 129 bp. Unmethylation-specific primers were 5'-ATTTGGGTTATTGTTTTAGGTTTTG-3' (forward) and 5'-ACAAAATCAATACCTTCCTTAA CAC-3' (reverse). Primer sets for detection of methylated and unmethylated DNA were located at the same sites in the genomic sequence (forward primer at -35 to -12 from the translation start site; reverse primer at 71-93). The PCR products were 131 bp long. The PCR products were separated on 8% non-denaturing polyacrylamide gel, and they were stained with ethidium-bromide.

Immunohistochemical staining (IHC). Sections from the surgical specimens fixed in 10% formalin and embedded in paraffin were used for immunohistochemical staining by the standard method. Briefly, each 4- μ m tissue section was deparaffinized and rehydrated. After rehydration through a graded ethanol series, the sections were autoclaved in 10 mM citrate buffer (pH 6.0) at 120°C for 2 min for antigen retrieval, then cooled to 30°C and washed with phosphate-buffered saline (PBS, pH 7.3). After blocking non-specific sites had been blocked with 10% normal calf serum in phosphate-buffered saline for 10 min, the sections were incubated at 4°C overnight with an anti-EphA1 polyclonal antibody (Abgent, San Diego, CA, USA) at a 1:100 dilution in Antibody Diluent (Zymed, Invitrogen, USA), then washed with PBS. Next the sections were incubated with secondary antibody (Dako, UK) for 30 min at room temperature. Color development was performed with 3,3'-diaminobenzidine (DAB). Nuclei were lightly counterstained with hematoxylin. The adsorption test was performed by incubating the antigenic peptide used to generate the antibody. Two pathologists independently assessed the immunostained slides, and any differences in the staining scores were resolved by consensus. Staining intensity was scored using the following scale: negative, 0; weak, 1; moderate, 2; and strong, 3. Staining was semiquantitatively scored according to the proportion of cells that stained by using the following scale: 0, no cells stained; 1, <10% stained; 2, 10-50% stained; and 3, >50% of the cells stained. The scores for expression and proportion of positive cells that stained were added. EphA1 expression was assessed by comparing the scores of tumor tissues and adjacent normal mucosa tissues.

Statistical analysis. The statistical significance of intergroup differences was evaluated by a χ^2 test. All statistical analyses were performed by using SPSS software program (SPSS, Chicago, IL). Kaplan-Meier survival analysis was used to examine the relationship between categorical groups and survival in the univariate analysis. A two-sided P-value of

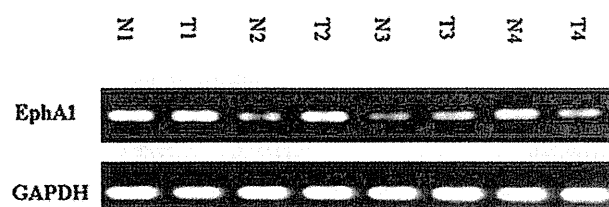


Figure 1. EphA1 transcript expression was detected by RT-PCR in gastric cancer tumor tissue (T) and corresponding normal mucosa (N).

<0.05 was considered statistically significant in all of the statistical tests.

Results

Differences in expression of EphA1 transcripts by gastric carcinomas. Expression of EphA1 transcripts was detected by real-time PCR in all 56 gastric carcinoma specimens that contained paired normal mucosa and tumor. There was marked interspecimen variability in the levels of EphA1 expression in the gastric cancer specimens (Fig. 1). The specimens were divided into three groups according to the ratio of the EphA1 expression level in the normal mucosa to the level in the tumor tissue: a group in which the ratio of the level of EphA1 expression in the normal mucosa to the level in the tumor tissue was >2 (normal mucosa, tumor ratio >2, N/T>2; group A); a group in which the ratio was <0.5 (normal mucosa, tumor ratio <0.5, N/T<0.5; group B); and a group in which the ratio was between 0.5 and 2; group C (Table II). Down-regulation of EphA1 (normal mucosa, tumor ratio >2, N/T>2) was observed in 19 out of the 56 (34%) gastric carcinoma specimens; overexpression of EphA1 (normal mucosa, tumor ratio<0.5, N/T<0.5) was observed in 14 out of the 56 (25%) gastric carcinoma specimens; and no difference in expression (normal mucosa, tumor ratio between 0.5 and 2, N/T 0.5-2) was observed in 23 of the 56 (41%) specimen.

Associations between EphA1 transcript expression and clinicopathological parameters. The associations of the EphA1 transcript expression and various clinical variables are shown in Table II. There was a significant correlation between EphA1 transcript expression and tumor size (P=0.05), tumor stage (P=0.001), and lymph node metastasis (P=0.011). No significant correlations were found between EphA1 transcript expression and gender, age, differentiation, or microscopic subtype.

Methylated EphA1 DNA was detected in most specimens with down-regulation of EphA1 expression. The methylation status of the 5'CpG island around the translation start site was assessed by the methylation-specific PCR (MSP) (Fig. 2). Evidence of hypermethylation of the 5'CpG island was found in some of gastric carcinoma specimens. Methylated EphA1 DNA was detected in 16 (42%) of 38 gastric carcinoma samples, and the 16 samples were from 12 (80%) of 15 tumor specimens in which EphA1 was down-regulated, and from 4 (17%) of 23 tumor specimens in which the

Table II. Relation between expression of EphA1 transcript and protein and clinicopathological parameters of gastric carcinomas.

Variable	EphA1 transcript expression			P-value	EphA1 protein expression			P-value
	N/T >2	N/T 0.5-2	N/T <0.5		Down-regulation	No change	Up-regulation	
Case no.	19	23	14		80	26	39	
Gender								
Male	13	19	9	0.401	54	20	31	0.331
Female	6	4	5		26	6	8	
Age (years)								
≤50	2	2	5	0.068	17	5	10	0.802
>50	17	21	9		63	21	29	
Differentiation								
Moderately differentiated	9	13	4	0.254	29	13	17	0.422
Poorly differentiated	10	10	10		51	13	22	
Tumor size (cm)								
<5	12	6	7	0.05	40	16	16	0.268
≥5	7	17	7		40	10	23	
Depth of wall invasion								
Mucosa, submucosa	2	0	0	0.373	7	4	0	0.069
Muscularis propria	6	5	2		17	5	4	
Subserosa, serosa	11	18	12		56	17	35	
Stage								
I + II	13	8	1	0.001	41	11	3	<0.001
III + IV	6	15	13		39	15	36	
Microscopic subtypes								
Intestinal	14	14	10	0.789	50	17	23	0.964
Diffuse	5	7	3		28	9	14	
Other	0	2	1		2	0	2	
Lymph node metastasis								
Present	8	18	12	0.011	47	18	33	0.018
Absent	11	5	2		33	8	6	

Table III. The relation between expression of EphA1 mRNA and the hypermethylation of DNA in gastric tumor tissues.

mRNA expression	Case no.	Hypermethylation (+)	Hypermethylation (-)	P-value
Down-regulation	15	12	3	0.001
No change	18	3	15	
Up-regulation	5	1	4	
Total number	38	16	22	

EphA1 was not down-regulated. Hypermethylation status was significantly associated with the level of EphA1 transcript expression ($P=0.001$). It is noteworthy that methylated

DNA was also detected in one tumor sample in which the expression of EphA1 was overexpressed (Table III). Analysis of the relations between hypermethylation and clinicopatho-

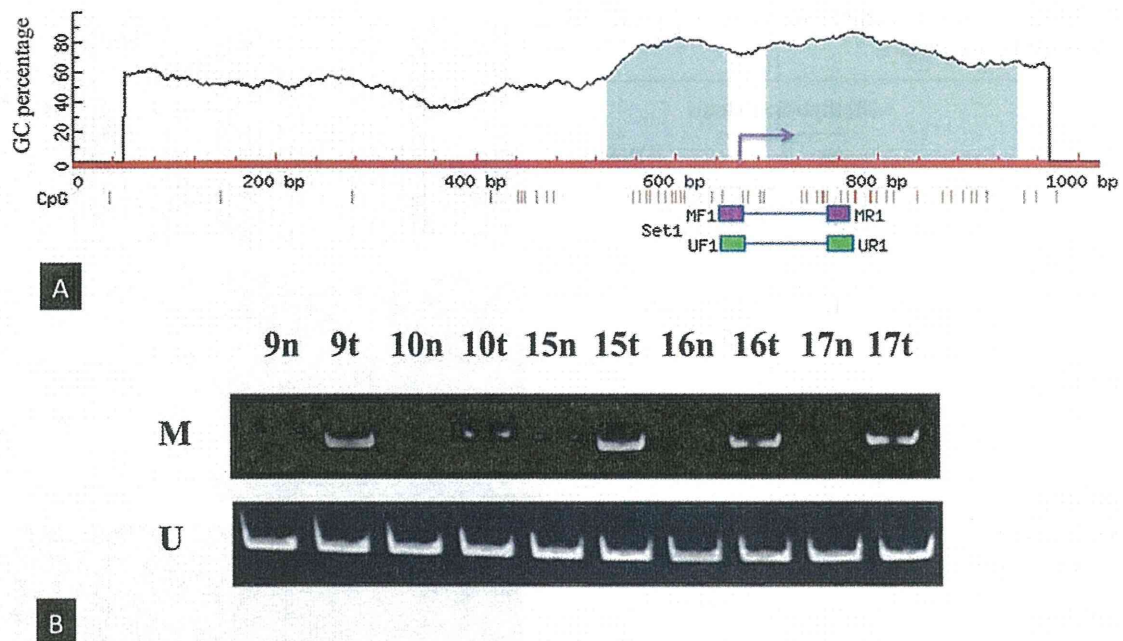


Figure 2. Hypermethylation of the CpG island of EphA1 was investigated by MSP. (A) Schematic diagram showing the promoter-associated CpG island in EphA1 and the location of the PCR primer sets for specific detection of methylated and unmethylated EphA1 DNA. The arrow points to the translation start site of EphA1. (B) Methylated and unmethylated EphA1 DNA were detected in gastric carcinoma tissue and normal mucosa.

logical parameters revealed significant associations between EphA1 methylation status and both tumor differentiation and size (Table IV).

Expression of EphA1 protein in normal gastric mucosa cells and gastric carcinoma cells. A polyclonal EphA1 antibody was used to immunohistochemically stain 145 formalin-fixed paraffin-embedded specimens (Fig. 3). EphA1 protein expression varied between gastric cancer cells and adjacent normal mucosa cells, and heterogeneous staining was observed. EphA1 immunoreactivity was observed in the cytoplasm, the golgiosome, or both. Down-regulation of EphA1 protein was observed in 80 (55%) of the 145 tumor specimens, overexpression of EphA1 protein in 39 (27%) out of the 145 tumor specimens, and no difference in 26 (18%) of the 145 tumor specimens (Table II).

Associations between EphA1 protein expression and the clinicopathological parameters. The associations between the EphA1 protein expression and the clinicopathological characteristics are shown in Table II. EphA1 protein was significantly overexpressed in tumors in the patients with advanced stage ($P < 0.001$) and with lymph node metastasis ($P = 0.018$). Overexpression of EphA1 protein was associated with depth of wall invasion ($P = 0.069$). The EphA1 protein expression was not associated with any of the other clinicopathological characteristics.

Overexpression EphA1 protein was associated with poor survival of gastric carcinoma patients. Gastric carcinoma patients who underwent surgery at Nanjing Jinling Hospital between March 2002 and March 2006 were followed up and data for 87 patients are available. The follow-up period

was 4-63 months, and the median follow-up period was 24 months. Paraffin tissue samples were collected and immunohistochemically stained with the specific EphA1 antibody, and we investigated associations between EphA1 protein expression and clinical outcome. The Kaplan-Meier survival analysis showed that patients whose tumor showed EphA1 up-regulation had a shorter survival time than those with reduced EphA1 expression (log-rank test, $P = 0.005$) or no difference in expression ($P = 0.003$) (Fig. 4).

Discussion

Roles of the receptor tyrosine kinases (RTKs) in both normal physiology and oncogenesis have been well-established. The genes that encode Eph receptors, the largest subfamily of receptor tyrosine kinases, are primarily considered to be classical oncogenes, and overexpression of the EphA2 receptor has been well documented in many human cancers, including prostate cancer (20), colorectal cancer (21), gastric cancer (22), ovarian cancer (23), and endometrial cancer (24). Elevated EphA2 expression is correlated with disease stage, increased tumor metastasis, and poor patient survival. EphA2 plays a critical role in cancer progression. Overexpression of EphA4 correlates with liver metastasis in colorectal cancer (25), and promotes cancer cell growth in pancreatic ductal adenocarcinoma (26). However, the role of Eph receptors and Ephrin ligands in oncogenesis appears to be complex and remains ill-defined (27-29). There are increasing conflicting data regarding Eph receptor genes in different cancer types, especially in regard to the putative function of the genes that encode Eph receptors as oncogenes or tumor suppressor genes. The loss of expression of EphA3 in human T-cell line HPB-ALL is associated with hyper-

Table IV. Relation between methylation status of EphA1 and clinicopathological parameters.

Variable	Methylation status		P-value
	+	-	
Case no.	16	22	
Gender			
Male	12	17	1
Female	4	5	
Age (years)			
≤50	3	1	1
>50	13	21	
Differentiation			
Moderately differentiated	10	9	0.058
Poorly differentiated	6	13	
Tumor size (cm)			
<5	12	7	0.023
≥5	4	15	
Depth of wall invasion			
Mucosa, submucosa	1	0	
Muscularis propria	5	5	0.712
Subserosa, serosa	10	17	
Stage			
I + II	8	7	0.182
III + IV	8	15	
Microscopic subtypes			
Intestinal	13	14	0.245
Diffuse	2	6	
Other	1	2	
Lymph node metastasis			
Present	10	17	0.471
Absent	6	5	

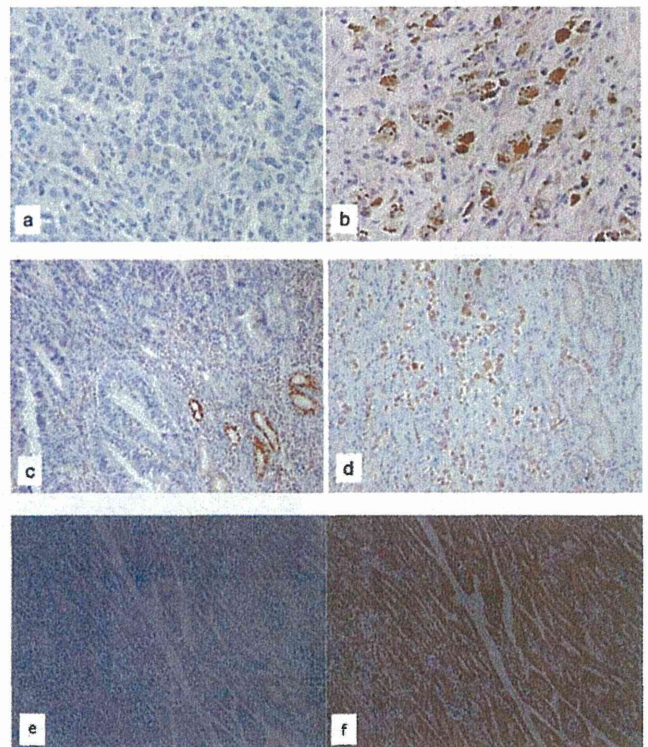


Figure 3. Immunohistochemical staining of EphA1 in gastric carcinomas. (a) Gastric carcinoma cells that had lost EphA1 protein expression. (b) Gastric carcinoma cells stained positive for EphA1 protein. (c) Down-regulation of EphA1 protein in gastric carcinoma. The normal gastric gland cells on the right show very strong brown staining, and the tumor cells show weak staining. (d) Up-regulation of EphA1 protein in gastric carcinoma. The normal gastric gland cells on the right show weak positive staining in comparison with the carcinoma cells. (e and f) Result of the adsorption test. The left panel (e) shows the adsorption of the antibody thereby validating the specificity of the antibody.

methylation of 5' upstream CpG island (30). Recent research findings regarding EphB2 and EphB4 in colorectal cancers have strengthened the hypothesis that Eph receptor gene can function as a tumor suppressor gene (25,31-33).

Wang *et al* have previously reported that down-regulation of the EphA7 receptor in colon cancer cell lines and colorectal cancer samples is secondary to hypermethylation of the 5'CpG island, and that down-regulation of the EphA7 is related to the differentiation of colorectal cancers (34). Investigation of expression of EphA7 in gastric carcinomas showed that EphA7 was decreased in all gastric cancer cell lines tested, but was markedly variable in gastric carcinoma specimens. Overexpression of EphA7 was more frequently observed in tumors from younger patients and patients with advanced stage disease, and no significant relation has been found between the expression of EphA7 and differentiation

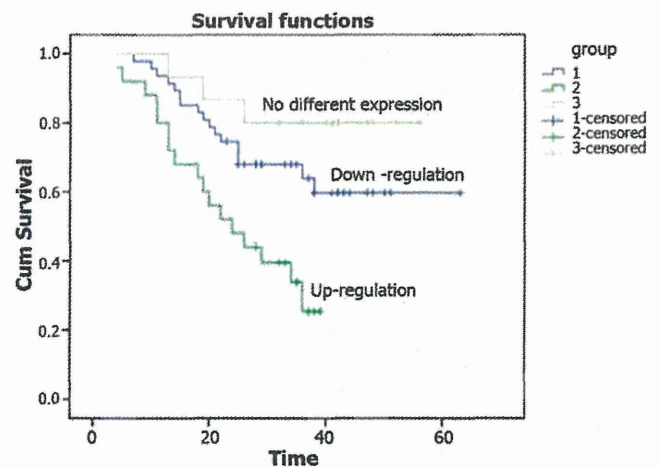


Figure 4. Kaplan-Meier plots of overall survival showing that the patients whose tumors exhibited EphA1 up-regulation had a shorter survival time (months) than those whose tumors exhibited EphA1 down-regulation (P=0.005) or no difference in expression (P=0.003). Lane 1, patients whose tumors exhibited down-regulation of EphA1; lane 2, patients whose tumors exhibited up-regulation of EphA1; and lane 3, patients whose tumors exhibited no difference in expression.

of gastric carcinoma (19). The above findings indicate that Eph receptors have unique functions that depend on the organ or cell lineage.

In the present study differential expression of EphA1 transcripts and protein was detected in a set of gastric carcinoma specimens. Consistent results for EphA1 transcript and protein expression level were found in 34 (61%) out of 56 tumor samples that contained with both fresh and paraffin fixed tissues, and in the other 22 (39%) the results were not consistent. This may partly be explained that by post-transcription regulation mechanisms. EphA2 has been demonstrated to contribute to tumor progression in several tumor types. Expression of EphA2 mutants lacking the cytoplasmic domain or carrying a point mutation in breast cancer cells resulted in decreased tumor volume and increased tumor apoptosis (35). siRNA knock-down of EphA2 expression in pancreatic cancer cells inhibits tumor growth and metastasis (36), and soluble EphA2-Fc receptor has been shown to effectively inhibit EphA2 receptor phosphorylation and tumor growth and metastasis (37). Our findings in this study indicated that EphA1 may have roles in the progression of gastric carcinoma. Gastric cancer cells that overexpressed EphA1 had greater invasive potential: 35 out of 39 (90%) tumors that overexpressed EphA1 had invaded to the serosa or subserosa, whereas only 56 (70%) of 80 tumors in patients with EphA1 down-regulation had invaded to the serosa or subserosa ($P=0.069$). Our data indicated that EphA1 may play different roles in progress of gastric carcinoma comparing with the roles in progress of colorectal carcinoma. The functions of EphA1 as an oncogene or a tumor suppressor depend on the organs where the cells located.

Expression of EphA1 transcripts and protein in gastric carcinoma was significantly associated with tumor metastasis ($P=0.011$ and $P=0.018$, respectively). The patients whose tumor exhibited up-regulation of EphA1 more commonly had lymph node metastasis. Gastric carcinoma patients whose tumor exhibited down-regulation of EphA1 transcripts had smaller tumors ($P=0.05$), however, the same finding was not observed in patients whose tumors exhibited down-regulation of EphA1 protein ($P=0.268$). Patients with up-regulation of EphA1 transcripts or protein had more advanced disease than those whose tumors exhibited down-regulation ($P=0.001$ or $P<0.001$). No significant associations between expression of EphA1 transcripts and protein and sex, differentiation, or microscopic subtypes were observed.

There is a CG-rich region around EphA1 translation start site (Fig. 2), and the CG sites in this region can be divided into two groups, a 153 bp CG group (5'-CG-rich region) upstream of the translation start site and a 251 bp CG group (3'-CG-rich region) downstream of the translation start site. Methylation has been detected in the 5'-CG-rich region in colorectal cancer and corresponding normal samples, suggesting that this region is not involved in gene regulation. An inverse correlation has been found between methylation of CpG islands in the 3'-CG-rich region and EphA1 expression in colorectal cancers (18). We designed a set of methylation specific PCR (MSP) primers for 3'-CG-rich region to detect methylated and unmethylated EphA1 DNA, and we detected methylated EphA1 DNA in five colon cancer cell lines (17). In the present study we used MSP to analyze the methylation

status of EphA1 in 38 fresh gastric carcinoma tissues (each including normal tissue and tumor tissue). Methylated EphA1 DNA was detected in most tumor tissues (12/15, 80%) that exhibited down-regulation of EphA1 transcript expression, suggesting epigenetic mechanism plays a role in expression of EphA1. Methylated EphA1 was detected in 3 of 18 samples in which there was no difference in expression between the normal tissues and tumor tissue, and in 1 of 5 samples in which EphA1 transcript expression was up-regulated. This can be partly interpreted as meaning that inflammation had developed in the tumor tissue. Another explanation is that the methylation status of gastric carcinoma cells is heterogeneous, and that small percentage of methylated cells detected by MSP could not alter the level of EphA1 expression in the tumor as a whole. EphA1 methylation in gastric carcinoma was associated with both tumor differentiation and tumor size ($P=0.058$ and $P=0.023$, respectively). No significant associations between EphA1 hypermethylation and other clinicopathological parameters were observed.

Follow-up information for 87 gastric carcinoma patients was available, and the association between EphA1 protein expression and overall survival rate was analyzed. The overall survival time of the patients with EphA1 up-regulation was shorter than that of the patients whose tumors exhibited down-regulation ($P=0.005$) or no difference in expression ($P=0.003$). Our data indicated that patients whose tumor exhibited overexpression of EphA1 had a poor prognosis. Briefly, the results of this study indicated that the EphA1 gene may play the role of an oncogene in gastric carcinoma, although intensive cell biological studies both *in vitro* and *in vivo* should be carried out to elucidate the mechanisms. The level of EphA1 expression may be useful as a potential prognostic marker in gastric carcinoma, and the EphA1 gene may serve as a novel target of therapy for gastric carcinoma.

Acknowledgements

This study was supported in part by National Basic Research Priorities Program 973 Project (2006, CB 705707) from the Ministry of Science and Technology of China, China Nanjing Medicine Science and Technology Research Project (No. 06Z37), National Natural Science Foundation of China (30970813, and 30930028), by the Ministry of Education, Culture, Science, Sports, and Technology of Japan (20014007), the Ministry of Health, Labour and Welfare of Japan (19-19), Research on International Cooperation in Medical Science and the Smoking Research Foundation.

References

1. Parkin DM, Bray F, Ferlay J and Pisani P: Global cancer statistics, 2002. *CA Cancer J Clin* 55: 74-108, 2005.
2. Chang MS, Uozaki H, Chong JM, *et al*: CpG island methylation status in gastric carcinoma with and without infection of Epstein-Barr virus. *Clin Cancer Res* 12: 2995-3002, 2006.
3. Wang LH, Kim SH, Lee JH, *et al*: Inactivation of SMAD4 tumor suppressor gene during gastric carcinoma progression. *Clin Cancer Res* 13: 102-110, 2007.
4. Cha EJ, Noh SJ, Kwon KS, *et al*: Expression of DBC1 and SIRT1 is associated with poor prognosis of gastric carcinoma. *Clin Cancer Res* 15: 4453-4459, 2009.
5. Kaizaki R, Yashiro M, Shinto O, *et al*: Expression of ER as oncogene in gastric carcinoma. *Anticancer Res* 29: 2189-2193, 2009.

6. Omori Y, Nakayama F, Li D, *et al*: Alternative lengthening of telomeres frequently occurs in mismatch repair system-deficient gastric carcinoma. *Cancer Sci* 100: 413-418, 2009.
7. Sakata M, Kitamura YH, Sakuraba K, *et al*: Methylation of HACE1 in gastric carcinoma. *Anticancer Res* 29: 2231-2233, 2009.
8. Toyokawa T, Yashiro M and Hirakawa K: Co-expression of keratinocyte growth factor and K-sam is an independent prognostic factor in gastric carcinoma. *Oncol Rep* 21: 875-880, 2009.
9. Tsamandas AC, Kardamakis D, Tsiamalos P, *et al*: The potential role of Bcl-2 expression, apoptosis and cell proliferation (Ki-67 expression) in cases of gastric carcinoma and correlation with classic prognostic factors and patient outcome. *Anticancer Res* 29: 703-709, 2009.
10. Hirai H, Maru Y, Hagiwara K, Nishida J and Takaku F: A novel putative tyrosine kinase receptor encoded by the eph gene. *Science* 238: 1717-1720, 1987.
11. Hafner C, Schmitz G, Meyer S, *et al*: Differential gene expression of Eph receptors and ephrins in benign human tissues and cancers. *Clin Chem* 50: 490-499, 2004.
12. Herath NI, Spanevello MD, Sabesan S, *et al*: Over-expression of Eph and ephrin genes in advanced ovarian cancer: ephrin gene expression correlates with shortened survival. *BMC Cancer* 6: 144, 2006.
13. Lin HS, Berry GJ, Fee WE Jr, Terris DJ and Sun Z: Identification of tyrosine kinases overexpressed in head and neck cancer. *Arch Otolaryngol Head Neck Surg* 130: 311-316, 2004.
14. Fox BP, Tabone CJ and Kandpal RP: Potential clinical relevance of Eph receptors and ephrin ligands expressed in prostate carcinoma cell lines. *Biochem Biophys Res Commun* 342: 1263-1272, 2006.
15. Fox BP and Kandpal RP: Invasiveness of breast carcinoma cells and transcript profile: Eph receptors and ephrin ligands as molecular markers of potential diagnostic and prognostic application. *Biochem Biophys Res Commun* 318: 882-892, 2004.
16. Hafner C, Becker B, Landthaler M and Vogt T: Expression profile of Eph receptors and ephrin ligands in human skin and downregulation of EphA1 in non-melanoma skin cancer. *Mod Pathol* 19: 1369-1377, 2006.
17. Dong Y, Wang J, Sheng Z, *et al*: Downregulation of EphA1 in colorectal carcinomas correlates with invasion and metastasis. *Mod Pathol* 22: 151-160, 2009.
18. Herath NI, Doecke J, Spanevello MD, Leggett BA and Boyd AW: Epigenetic silencing of EphA1 expression in colorectal cancer is correlated with poor survival. *Br J Cancer* 100: 1095-1102, 2009.
19. Wang J, Li G, Ma H, *et al*: Differential expression of EphA7 receptor tyrosine kinase in gastric carcinoma. *Hum Pathol* 38: 1649-1656, 2007.
20. Walker-Daniels J, Coffman K, Azimi M, *et al*: Overexpression of the EphA2 tyrosine kinase in prostate cancer. *Prostate* 41: 275-280, 1999.
21. Kataoka H, Igarashi H, Kanamori M, *et al*: Correlation of EPHA2 overexpression with high microvessel count in human primary colorectal cancer. *Cancer Sci* 95: 136-141, 2004.
22. Nakamura R, Kataoka H, Sato N, *et al*: EPHA2/EFNA1 expression in human gastric cancer. *Cancer Sci* 96: 42-47, 2005.
23. Lin YG, Han LY, Kamat AA, *et al*: EphA2 overexpression is associated with angiogenesis in ovarian cancer. *Cancer* 109: 332-340, 2007.
24. Kamat AA, Coffey D, Merritt WM, *et al*: EphA2 overexpression is associated with lack of hormone receptor expression and poor outcome in endometrial cancer. *Cancer* 115: 2684-2692, 2009.
25. Oshima T, Akaike M, Yoshihara K, *et al*: Overexpression of EphA4 gene and reduced expression of EphB2 gene correlates with liver metastasis in colorectal cancer. *Int J Oncol* 33: 573-577, 2008.
26. Iizumi M, Hosokawa M, Takehara A, *et al*: EphA4 receptor, overexpressed in pancreatic ductal adenocarcinoma, promotes cancer cell growth. *Cancer Sci* 97: 1211-1216, 2006.
27. Surawska H, Ma PC and Salgia R: The role of ephrins and Eph receptors in cancer. *Cytokine Growth Factor Rev* 15: 419-433, 2004.
28. Chen J, Zhuang G, Frieden L and Debinski W: Eph receptors and Ephrins in cancer: common themes and controversies. *Cancer Res* 68: 10031-10033, 2008.
29. Vaught D, Brantley-Sieders DM and Chen J: Eph receptors in breast cancer: roles in tumor promotion and tumor suppression. *Breast Cancer Res* 10: 217, 2008.
30. Dottori M, Down M, Huttman A, Fitzpatrick DR and Boyd AW: Cloning and characterization of EphA3 (Hek) gene promoter: DNA methylation regulates expression in hematopoietic tumor cells. *Blood* 94: 2477-2486, 1999.
31. Batlle E, Bacani J, Begthel H, *et al*: EphB receptor activity suppresses colorectal cancer progression. *Nature* 435: 1126-1130, 2005.
32. Clevers H and Batlle E: EphB/EphrinB receptors and Wnt signaling in colorectal cancer. *Cancer Res* 66: 2-5, 2006.
33. Cortina C, Palomo-Ponce S, Iglesias M, *et al*: EphB-ephrin-B interactions suppress colorectal cancer progression by compartmentalizing tumor cells. *Nat Genet* 39: 1376-1383, 2007.
34. Wang J, Kataoka H, Suzuki M, *et al*: Downregulation of EphA7 by hypermethylation in colorectal cancer. *Oncogene* 24: 5637-5647, 2005.
35. Fang WB, Brantley-Sieders DM, Parker MA, Reith AD and Chen J: A kinase-dependent role for EphA2 receptor in promoting tumor growth and metastasis. *Oncogene* 24: 7859-7868, 2005.
36. Duxbury MS, Ito H, Zinner MJ, Ashley SW and Whang EE: Ligation of EphA2 by Ephrin A1-Fc inhibits pancreatic adenocarcinoma cellular invasiveness. *Biochem Biophys Res Commun* 320: 1096-1102, 2004.
37. Brantley DM, Cheng N, Thompson EJ, *et al*: Soluble Eph A receptors inhibit tumor angiogenesis and progression in vivo. *Oncogene* 21: 7011-7026, 2002.

Secreted form of *Epha7* in lung cancer

MASARU TSUBOI¹, HIROKI MORI¹, TOMOYASU BUNAI¹, SHINJI KAGEYAMA¹, MASAYA SUZUKI¹, KOJI OKUDELA¹, KAZUYA TAKAMOCHI², HIROSHI OGAWA³, HIROSHI NIWA⁴, KAZUYA SHINMURA¹ and HARUHIKO SUGIMURA¹

Departments of ¹Pathology and ²Respiratory Surgery, Hamamatsu University School of Medicine, 1-20-1 Handayama, Higashi-ward, Hamamatsu 431-3192; Departments of ³Pathology and ⁴Respiratory Surgery, Seirei Mikatahara Hospital, 3453 Mikataharacho, Kita-ward, Hamamatsu 423-8558, Japan

Received September 25, 2009; Accepted November 18, 2009

DOI: 10.3892/ijo_00000539

Abstract. EPHA7 is a member of the EPHA family of receptor kinases, among which several members are known to be involved in human lung carcinogenesis. We report here a novel spliced variant, the so-called secreted form of EPHA7, recently reported in malignant lymphoma, in human lung cancer cell lines and primary lung cancer. In contrast to the *EPHA7* down-regulation in colorectal cancer by promoter hypermethylation, EPHA7 is expressed at a substantial level in most human lung cancers and the secreted form of EPHA7 mRNA was found in a fraction of primary lung cancer tissues, lung cancer cell lines, and immortalized bronchogenic epithelial cell lines. Interestingly, the secreted form of *EPHA7* message was predominantly detected in non-adenocarcinoma type lung carcinoma. The mechanistic role of the secreted form of *EPHA7* in human lung carcinogenesis is not clear, but the presence of this form could distinctly exclude adenocarcinoma of the lung from the other categories, i.e., squamous cell carcinoma, small cell carcinoma and large cell carcinoma, which have strong association with smoking. This is the first study to detect the secreted form of *EPHA7* in human epithelial tissues. EPHA7 warrants further investigation to determine its possible involvement in smoking related lung carcinogenesis.

Introduction

The erythropoietin producing hepatocellular carcinoma (EPH) family of receptor tyrosine kinases constitutes the RTK sub-family and members of this family are divided into EPHAs and EPHBs. EPHAs are typically bound to Ephrin(EFN)As, which are anchored to the cell membrane via a glycosylphosphatidylinositol anchor. EPHBs are typically bound to EFNBs, which have a transmembrane domain (1). These molecules

take bidirectional signal pathways, EFN to EPH forward signal and EPH to EFN reverse signal, and these pathways are involved in many physiological and pathological conditions (2). Members of this family play critical roles in many facets of cancer biology, from initiation to metastasis and also invasion (3-6). Almost all the human cancers have been reported to be associated with some of the EPH-EFN pathways (7-11). EPHA family genes, especially *EPHA3* and *EPHA5*, are among the genes which often mutate in human lung cancer, as demonstrated by a recent extensive large scale coding sequence analysis (12). EPHA7 is a member of the EPHA family, but it has been investigated in only a few human lung cancers. The recent finding of its downregulation by promoter methylation and a possible tumor suppressing effect in several types of human cancer (8,13,14) prompted us to investigate the expression status of EPHA7 in human lung cancer, to assess the possibility of a tumor suppressor role in lung carcinogenesis. On the other hand, the locus of *EPHA7* is near the breakpoint of t(3;6) in renal cell carcinoma (15). Considering the recent discovery of various translocations in solid tumors (16,17), especially in lung carcinoma (18-20), we also anticipated translocation involving this gene locus in lung cancer.

Materials and methods

Cell lines. Forty cell lines, consisting of 3 normal lung cells (SAEC, 16HBET14o- and WI-38), 10 lung adenocarcinomas (H358, H820, H2087, A549, HLC-1, RERF-LC-MS, RERF-LC-KJ, LC-2/ad, VMRC-LCD and PC-3), one lung squamous cell carcinoma (ABC-1), four lung large cell carcinomas (H460, H1299, LU65 and PC-13), five lung small cell carcinomas (H526, H1688, TKB-2, Lu-130 and Lu-135), three colon adenocarcinomas (HCT116, HT29 and DLD-1), eight gastric adenocarcinomas (AGS, HSC-39, KATO3, MKN-1, MKN-28, MKN-45, MKN-74 and TMK-1) and four esophageal squamous cell carcinomas (A431, HSC-2, HSC-3 and HSC-4), were used in this study. The 16HBE14o- cell line (Simian virus 40-transformed human bronchial epithelial cells) was a gift from Dr D.C. Gruenert (California Pacific Medical Center Research Institute, San Francisco, CA, USA) via Dr T. Kaneko (Department of Internal Medicine, Yokohama City University, School of Medicine, Yokohama,

Correspondence to: Dr Haruhiko Sugimura, First Department of Pathology, Hamamatsu University School of Medicine, 1-20-1 Handayama, Higashi-ward, Hamamatsu 431-3192, Japan
E-mail: hsugimur@hama-med.ac.jp

Key words: *EPHA7*, lung cancer