

**Figure 3.** Low transcription levels of genes susceptible to DNA methylation induction (modified from Takeshima et al.<sup>39</sup>). Genes were classified into those resistant (Res), intermediately susceptible (Int S), and highly susceptible (High S) to methylation induction during carcinogenesis. Their transcription levels in normal prostatic epithelial cells (left) and normal mammary epithelial cells (right) were measured by expression microarray. A gradual decrease of transcription levels in genes with higher susceptibility was observed.

and tobacco smoking.<sup>10</sup> In the case of *H. pylori* infection, we recently demonstrated that inflammation induced by it is critical for methylation induction.<sup>33</sup> To reveal the target gene specificity in aberrant DNA methylation induction by *H. pylori*, we sensitively analyzed methylation of 48 genes, which can be methylated at least in gastric cancer cell lines,<sup>34</sup> in human gastric mucosae with and without *H. pylori* infection (Fig. 2A).<sup>9</sup> It was clearly shown that some genes were susceptible to methylation induction by *H. pylori* infection while others were resistant. The susceptible genes had lower transcription levels in normal gastric mucosae than the resistant genes. Target gene specificity by tobacco smoking was also present in esophageal mucosae. When we quantified methylation levels of 13 genes, which can be methylated in esophageal cancers, methylation levels of only five genes had significant correlations with duration of tobacco smoking (Fig. 2B).<sup>10</sup>

#### Role of Low Transcription in Target Gene Specificity

Regarding the mechanisms underlying the target gene specificity, low transcription in normal cells was proposed in the early 2000s.<sup>35-38</sup> As mechanistic analyses in vitro, Song et al. demonstrated that disruption of promoter activity (thus low transcription levels) of a transfected gene leads to aberrant DNA methylation of promoter CGIs in a cancer cell line.<sup>35</sup> Using an endogenous gene demethylated by a DNA demethylating agent,

5-aza-2'-deoxycytidine, de Smet et al. demonstrated that the demethylated gene becomes remethylated when it is not transcribed.<sup>36</sup> As for findings in vivo, we showed that most genes methylated in pancreatic cancers and malignant melanomas had no or low transcription levels in their normal counterpart cells.<sup>37,38</sup> Genome-wide studies using microarrays in colorectal, prostate, and breast cancers also showed that genes with low transcription in normal cells tend to be methylated in cancers (Fig. 3).<sup>19,39</sup> Even using genes methylated in non-cancerous tissues, genes susceptible to aberrant methylation had lower transcription levels than resistant genes.<sup>9</sup>

#### Role of Histone Modifications in Target Gene Specificity

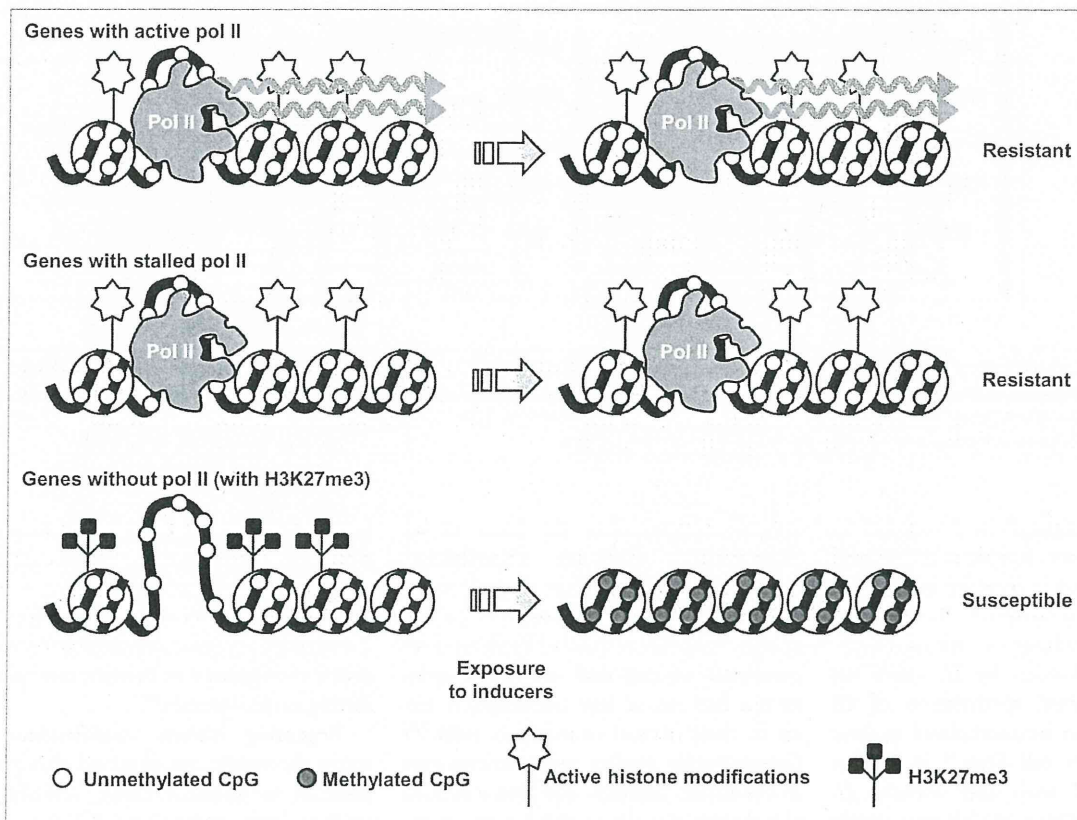
As another mechanism for the target gene specificity, histone modifications have drawn a lot of attention over the last couple of years. Using selected genes, three groups demonstrated that genes methylated in cancers are pre-marked by trimethylation of histone H3 lysine 27 (H3K27me3) in embryonic stem cells<sup>40-42</sup> and normal corresponding tissue.<sup>42</sup> Premark by H3K27me3 of genes that will become methylated in cancers was further confirmed using genes identified by DNA methylation microarray analysis.<sup>39,43,44</sup> H3K27me3 is known to be recognized by a polycomb repressive complex (PRC).<sup>45-47</sup> A component of PRC2, EZH2, and, that of PRC1, CBX7, are known to interact with DNA methyltransferases (DNMTs),<sup>48,49</sup> and there is a

possibility that H3K27me3 functions as a recruiting signal for DNMTs. Another representative repressive histone modification, trimethylation of histone H3 lysine 9 (H3K9me3), in normal cells was not associated with genes that become methylated during carcinogenesis.<sup>39</sup>

Regarding histone modifications of active chromatin, we observed that genes resistant to aberrant DNA methylation tend to have acetylation of histone H3 (H3Ac) and trimethylation of histone H3 lysine 4 (H3K4me3) in normal cells.<sup>39</sup> Active histone modifications are known to be recognized by proteins involved in transcriptional activation, such as ATP-dependent chromatin remodeling complex, SWI/SNF<sup>50</sup> and the basal transcription factor, TFIID,<sup>51</sup> and are associated with high levels of transcription. The resistance of genes with active histone modifications to methylation induction may be dependent upon high levels of gene transcription.

#### Role of RNA Polymerase II Binding, Active or Stalled, in Target Gene Specificity

Although genes with low transcription levels are susceptible to DNA methylation induction, many such genes are still resistant. Even if limited to genes that have low transcription and H3K27me3 in normal cells, 16% of them are still resistant to methylation induction during carcinogenesis.<sup>39</sup> This indicates that there are additional factors that confer resistance to methylation induction. At individual gene



**Figure 4.** A scheme of the instructive mechanism of aberrant DNA methylation induction. Both genes with active Pol II and genes with stalled Pol II are resistant to aberrant methylation induction. In contrast, genes without Pol II but with H3K27me3 are highly susceptible to aberrant methylation induction.

levels, SP1/3 and MLL have been reported to be involved in resistance of the *APRT* and *Hoxa9* genes, respectively, to methylation induction.<sup>52-54</sup>

A region just upstream of a transcription start site (TSS), designated as a nucleosome-free region (NFR),<sup>55</sup> is most resistant to DNA methylation induction,<sup>56</sup> indicating that something there is associated with resistance to methylation induction. Recent studies showed that RNA polymerase II (Pol II) is stalled at NFRs for some genes with low transcription levels,<sup>57,58</sup> and we decided to focus on Pol II as a factor that confers resistance to methylation induction. Genome-wide analysis of histone modifications and Pol II binding in normal cells revealed that, even among genes with low transcription, high levels of Pol II binding and active histone modifications were associated with resistance to methylation induction during carcinogenesis.<sup>39</sup> By multivariate analysis,

Pol II binding had stronger influence on the resistance than active histone modifications. These results showed that the presence of Pol II, active (high transcription levels) or stalled (low transcription levels), is associated with resistance to methylation induction during carcinogenesis (Fig. 4).

Pol II forms a large complex with several general transcription factors,<sup>59</sup> and such a large complex around NFRs might inhibit the recruitment of DNMTs. Further analysis is needed to establish cause-consequence relationship between the presence of Pol II and resistance to DNA methylation induction, and to clarify molecular mechanisms of why genes with high Pol II binding are resistant to methylation induction.

### Concluding Remarks

The presence of target gene specificity in DNA methylation induction indicates that a methylation profile specific to a

carcinogenic factor can be used as a methylation fingerprint that tells past exposure to the factor. Since target genes are pre-marked by the presence of H3K27me3 and the absence of Pol II binding, methylation fingerprints are likely to be present for various inducers of aberrant methylation. Methylation fingerprints in individual tissues are likely to become available in the coming years and, if such fingerprints are also present in peripheral leukocytes, a new field of epigenetic epidemiology will be opened up.

The fact that genes with active transcription are resistant to DNA methylation induction can be rephrased as “iron (a gene) rusts (is methylated) from disuse (without Pol II binding),” or “use it, or lose it.” An important implication is that we might be able to protect a gene from becoming methylated by bringing Pol II to it. Although the distribution of H3K27me3 is likely to be predetermined



by cell types, the distribution of Pol II is considered to be modifiable, for example by inducing gene transcription. If we can develop a method, including use of chemicals, which can change the thread by Goddess Moira, it is likely to be a novel method for disease prevention by keeping our epigenome fresh.

#### Acknowledgements

The original work described here was supported by Grants-in-Aid for the Third-Term Comprehensive Cancer Control Strategy from the Ministry of Health, Labor and Welfare, Japan; and for the Priority-area Research from the Ministry of Education, Science, Culture and Sport, Japan.

#### References

- Bird A. DNA methylation patterns and epigenetic memory. *Genes Dev* 2002; 16:6-21.
- Laird PW, Jaenisch R. The role of DNA methylation in cancer genetic and epigenetics. *Annu Rev Genet* 1996; 30:441-64.
- Robertson KD. DNA methylation and human disease. *Nat Rev Genet* 2005; 6:597-610.
- Jones PA, Baylin SB. The epigenomics of cancer. *Cell* 2007; 128:683-92.
- Jones PA, Laird PW. Cancer epigenetics comes of age. *Nat Genet* 1999; 21:163-7.
- Herman JG, Baylin SB. Gene silencing in cancer in association with promoter hypermethylation. *N Engl J Med* 2003; 349:2042-54.
- Ushijima T, Asada K. Aberrant DNA Methylation in Contrast with Mutations. *Cancer Sci* 2009; In press.
- Ushijima T, Okochi-Takada E. Aberrant methylations in cancer cells: Where do they come from? *Cancer Sci* 2005; 96:206-11.
- Nakajima T, Yamashita S, Maekita T, Niwa T, Nakazawa K, Ushijima T. The presence of a methylation fingerprint of *Helicobacter pylori* infection in human gastric mucosae. *Int J Cancer* 2009; 124:905-10.
- Oka D, Yamashita S, Tomioka T, Nakanishi Y, Kato H, Kaminishi M, et al. The presence of aberrant DNA methylation in noncancerous esophageal mucosae in association with smoking history: a target for risk diagnosis and prevention of esophageal cancers. *Cancer* 2009; 115:3412-26.
- Maekita T, Nakazawa K, Mihara M, Nakajima T, Yanaoka K, Iguchi M, et al. High levels of aberrant DNA methylation in *Helicobacter pylori*-infected gastric mucosae and its possible association with gastric cancer risk. *Clin Cancer Res* 2006; 12:989-95.
- Ushijima T. Epigenetic field for cancerization. *J Biochem Mol Biol* 2007; 40:142-50.
- Ando T, Yoshida T, Enomoto S, Asada K, Tatematsu M, Ichinose M, et al. DNA methylation of microRNA genes in gastric mucosae of gastric cancer patients: its possible involvement in the formation of epigenetic field defect. *Int J Cancer* 2009; 124:2367-74.
- Costello JF, Fruhwald MC, Smiraglia DJ, Rush LJ, Robertson GP, Gao X, et al. Aberrant CpG-island methylation has non-random and tumour-type-specific patterns. *Nat Genet* 2000; 24:132-8.
- Rauch TA, Zhong X, Wu X, Wang M, Kernstine KH, Wang Z, et al. High-resolution mapping of DNA hypermethylation and hypomethylation in lung cancer. *Proc Natl Acad Sci USA* 2008; 105:252-7.
- Yamashita S, Hosoya K, Gyobu K, Takeshima H, Ushijima T. Development of a novel output value for quantitative assessment in methylated DNA immunoprecipitation-CpG island microarray analysis. *DNA Res* 2009; 16:275-86.
- Leedham SJ, Wright NA. Expansion of a mutated clone: from stem cell to tumour. *J Clin Pathol* 2008; 61:164-71.
- Esteller M, Corn PG, Baylin SB, Herman JG. A gene hypermethylation profile of human cancer. *Cancer Res* 2001; 61:3225-9.
- Keshet I, Schlesinger Y, Farkash S, Rand E, Hecht M, Segal E, et al. Evidence for an instructive mechanism of de novo methylation in cancer cells. *Nat Genet* 2006; 38:149-53.
- Nagao M, Ochiai M, Okochi E, Ushijima T, Sugimura T. LacI transgenic animal study: relationships among DNA-adduct levels, mutant frequencies and cancer incidences. *Mutat Res* 2001; 477:119-24.
- Wood LD, Parsons DW, Jones S, Lin J, Sjoblom T, Leary RJ, et al. The genomic landscapes of human breast and colorectal cancers. *Science* 2007; 318:1108-13.
- Kondo Y, Kanai Y, Sakamoto M, Mizokami M, Ueda R, Hirohashi S. Genetic instability and aberrant DNA methylation in chronic hepatitis and cirrhosis—A comprehensive study of loss of heterozygosity and microsatellite instability at 39 loci and DNA hypermethylation on 8 CpG islands in microdissected specimens from patients with hepatocellular carcinoma. *Hepatology* 2000; 32:970-9.
- Waki T, Tamura G, Tsuchiya T, Sato K, Nishizuka S, Motoyama T. Promoter methylation status of E-cadherin, hMLH1 and p16 genes in nonneoplastic gastric epithelia. *Am J Pathol* 2002; 161:399-403.
- Eads CA, Lord RV, Kurumboor SK, Wickramasinghe K, Skinner ML, Long TI, et al. Fields of aberrant CpG island hypermethylation in Barrett's esophagus and associated adenocarcinoma. *Cancer Res* 2000; 60:5021-6.
- Issa JP, Ahuja N, Toyota M, Bronner MP, Brentnall TA. Accelerated age-related CpG island methylation in ulcerative colitis. *Cancer Res* 2001; 61:3573-7.
- Kang GH, Shim YH, Jung HY, Kim WH, Ro JY, Rhyu MG. CpG island methylation in premalignant stages of gastric carcinoma. *Cancer Res* 2001; 61:2847-51.
- Uemura N, Okamoto S, Yamamoto S, Matsumura N, Yamaguchi S, Yamakido M, et al. *Helicobacter pylori* infection and the development of gastric cancer. *N Engl J Med* 2001; 345:784-9.
- Nakajima T, Enomoto S, Yamashita S, Ando T, Nakanishi Y, Nakazawa K, et al. Persistence of a component of DNA methylation in gastric mucosae after *Helicobacter pylori* eradication. *J Gastroenterol* 2010; 45:37-44.
- Ishii T, Murakami J, Notohara K, Cullings HM, Sasamoto H, Kambara T, et al. Oesophageal squamous cell carcinoma may develop within a background of accumulating DNA methylation in normal and dysplastic mucosa. *Gut* 2007; 56:13-9.
- Yan PS, Venkataramu C, Ibrahim A, Liu JC, Shen RZ, Diaz NM, et al. Mapping geographic zones of cancer risk with epigenetic biomarkers in normal breast tissue. *Clin Cancer Res* 2006; 12:6626-36.
- Arai E, Kanai Y, Ushijima S, Fujimoto H, Mukai K, Hirohashi S. Regional DNA hypermethylation and DNA methyltransferase (DNMT) 1 protein overexpression in both renal tumors and corresponding nontumorous renal tissues. *Int J Cancer* 2006; 119:288-96.
- Li X, Hui AM, Sun L, Hasegawa K, Torzilli G, Minagawa M, et al. p16<sup>INK4A</sup> hypermethylation is associated with hepatitis virus infection, age and gender in hepatocellular carcinoma. *Clin Cancer Res* 2004; 10:7484-9.
- Niwa T, Tsukamoto T, Toyoda T, Mori A, Tanaka H, Maekita T, Ichinose M, Tatematsu M, Ushijima T. Inflammatory processes triggered by *Helicobacter pylori* infection cause aberrant DNA methylation in gastric epithelial cells. *Cancer Res*; in press.
- Yamashita S, Tsujino Y, Moriguchi K, Tatematsu M, Ushijima T. Chemical genomic screening for methylation-silenced genes in gastric cancer cell lines using 5-aza-2'-deoxycytidine treatment and oligonucleotide microarray. *Cancer Sci* 2006; 97:64-71.
- Song JZ, Stutzaker C, Harrison J, Melki JR, Clark SJ. Hypermethylation trigger of the glutathione-S-transferase gene (GSTP1) in prostate cancer cells. *Oncogene* 2002; 21:1048-61.
- De Smet C, Lorient A, Boon T. Promoter-dependent mechanism leading to selective hypomethylation within the 5' region of gene MAGE-A1 in tumor cells. *Mol Cell Biol* 2004; 24:4781-90.
- Hagihara A, Miyamoto K, Furuta J, Hiraoka N, Wakazono K, Seki S, et al. Identification of 27 5' CpG islands aberrantly methylated and 13 genes silenced in human pancreatic cancers. *Oncogene* 2004; 23:8705-10.
- Furuta J, Nobeyama Y, Umebayashi Y, Otsuka F, Kikuchi K, Ushijima T. Silencing of Peroxiredoxin 2 and aberrant methylation of 33 CpG islands in putative promoter regions in human malignant melanomas. *Cancer Res* 2006; 66:6080-6.
- Takeshima H, Yamashita S, Shimazu T, Niwa T, Ushijima T. The presence of RNA polymerase II, active or stalled, predicts epigenetic fate of promoter CpG islands. *Genome Res* 2009; 19:1974-82.
- Widschwendter M, Figl H, Egle D, Mueller-Holzner E, Spizzo G, Marth C, et al. Epigenetic stem cell signature in cancer. *Nat Genet* 2007; 39:157-8.
- Ohm JE, McGarvey KM, Yu X, Cheng L, Schuebel KE, Cope L, et al. A stem cell-like chromatin pattern may predispose tumor suppressor genes to DNA hypermethylation and heritable silencing. *Nat Genet* 2007; 39:237-42.
- Schlesinger Y, Straussman R, Keshet I, Farkash S, Hecht M, Zimmerman J, et al. Polycomb-mediated methylation on Lys27 of histone H3 pre-marks genes for de novo methylation in cancer. *Nat Genet* 2007; 39:232-6.
- Gal-Yam EN, Egger G, Iniguez L, Holster H, Einarsson S, Zhang X, et al. Frequent switching of Polycomb repressive marks and DNA hypermethylation in the PC3 prostate cancer cell line. *Proc Natl Acad Sci USA* 2008; 105:12979-84.
- Hahn MA, Hahn T, Lee DH, Esworthy RS, Kim BW, Riggs AD, et al. Methylation of polycomb target genes in intestinal cancer is mediated by inflammation. *Cancer Res* 2008; 68:10280-9.
- Fischle W, Wang Y, Jacobs SA, Kim Y, Allis CD, Khorasanizadeh S. Molecular basis for the discrimination of repressive methyl-lysine marks in histone H3 by Polycomb and HP1 chromodomains. *Genes Dev* 2003; 17:1870-81.
- Min J, Zhang Y, Xu RM. Structural basis for specific binding of Polycomb chromodomain to histone H3 methylated at Lys 27. *Genes Dev* 2003; 17:1823-8.
- Hansen KH, Bracken AP, Pasini D, Dietrich N, Gehani SS, Monrad A, et al. A model for transmission of the H3K27me3 epigenetic mark. *Nat Cell Biol* 2008; 10:1291-300.
- Vire E, Brenner C, Deplus R, Blanchon L, Fraga M, Didelot C, et al. The Polycomb group protein EZH2 directly controls DNA methylation. *Nature* 2006; 439:871-4.
- Mohammad HP, Cai Y, McGarvey KM, Easwaran H, Van Neste L, Ohm JE, et al. Polycomb CBX7 promotes initiation of heritable repression of genes frequently silenced with cancer-specific DNA hypermethylation. *Cancer Res* 2009; 69:6322-30.

50. Awad S, Hassan AH. The Swi2/Snf2 bromodomain is important for the full binding and remodeling activity of the SWI/SNF complex on H3- and H4-acetylated nucleosomes. *Ann N Y Acad Sci* 2008; 1138:366-75.
51. Vermeulen M, Mulder KW, Denisov S, Pijnappel WW, van Schaik FM, Varier RA, et al. Selective anchoring of TFIID to nucleosomes by trimethylation of histone H3 lysine 4. *Cell* 2007; 131:58-69.
52. Brandeis M, Frank D, Keshet I, Siegfried Z, Mendelsohn M, Nemes A, et al. Sp1 elements protect a CpG island from de novo methylation. *Nature* 1994; 371:435-8.
53. Macleod D, Charlton J, Mullins J, Bird AP. Sp1 sites in the mouse *aprt* gene promoter are required to prevent methylation of the CpG island. *Genes Dev* 1994; 8:2282-92.
54. Erfurth FE, Popovic R, Grembecka J, Cierpicki T, Theisler C, Xia ZB, et al. MLL protects CpG clusters from methylation within the *Hoxa9* gene, maintaining transcript expression. *Proc Natl Acad Sci USA* 2008; 105:7517-22.
55. Li B, Carey M, Workman JL. The role of chromatin during transcription. *Cell* 2007; 128:707-19.
56. Ushijima T. Detection and interpretation of altered methylation patterns in cancer cells. *Nat Rev Cancer* 2005; 5:223-31.
57. Muse GW, Gilchrist DA, Nechaev S, Shah R, Parker JS, Grissom SF, et al. RNA polymerase is poised for activation across the genome. *Nat Genet* 2007; 39:1507-11.
58. Zeitlinger J, Stark A, Kellis M, Hong JW, Nechaev S, Adelman K, et al. RNA polymerase stalling at developmental control genes in the *Drosophila melanogaster* embryo. *Nat Genet* 2007; 39:1512-6.
59. Boeger H, Bushnell DA, Davis R, Griesenbeck J, Lorch Y, Strattan JS, et al. Structural basis of eukaryotic gene transcription. *FEBS Lett* 2005; 579:899-903.



## Molecular and Cellular Pathobiology

Inflammatory Processes Triggered by *Helicobacter pylori* Infection Cause Aberrant DNA Methylation in Gastric Epithelial CellsTohru Niwa<sup>1</sup>, Tetsuya Tsukamoto<sup>2</sup>, Takeshi Toyoda<sup>2</sup>, Akiko Mori<sup>1</sup>, Harunari Tanaka<sup>2</sup>, Takao Maekita<sup>3</sup>, Masao Ichinose<sup>3</sup>, Masae Tatematsu<sup>2</sup>, and Toshikazu Ushijima<sup>1</sup>

## Abstract

Altered patterns of DNA methylation associated with *Helicobacter pylori* (*HP*) infection of gastric epithelial cells are thought to contribute to gastric cancer risk. However, it is unclear whether this increased risk reflects an infection-associated inflammatory response or the infection itself. In this study, we sought to clarify mechanisms in a gerbil model of gastric cancer where we showed that *HP* infection is causally involved in induction of aberrant DNA methylation. By genome-wide screening, CpG islands that were aberrantly methylated in gerbil gastric cancer cell lines were isolated, and 10 islands were shown to be specifically methylated only in gastric mucosae infected with *HP*. By temporal analysis, methylation levels in gastric epithelial cells started to increase at 5 to 10 weeks after infection and reached high levels by 50 weeks. When *HP* was eradicated, methylation levels markedly decreased 10 and 20 weeks later, but they remained higher than those in gerbils that were not infected by *HP*. Expression levels of several inflammation-related genes (*CXCL2*, *IL-1 $\beta$* , *NOS2*, and *TNF- $\alpha$* ) paralleled the temporal changes of methylation levels. Significantly suppressing inflammation with the immunosuppressive drug cyclosporin A did not affect colonization by *HP* but blocked the induction of altered DNA methylation. Our findings argue that DNA methylation alterations that occur in gastric mucosae after *HP* infection are composed of transient components and permanent components, and that it is the infection-associated inflammatory response, rather than *HP* itself, which is responsible for inducing the altered DNA methylation. *Cancer Res*; 70(4): 1430–40. ©2010 AACR.

## Introduction

Aberrant DNA methylation of promoter CpG islands (CGI) is one of the major inactivating mechanisms of tumor-suppressor genes and is deeply involved in human carcinogenesis (1). Nevertheless, there is only limited information on its inducers and induction mechanisms. Chronic inflammation, known to promote certain types of cancers (2), is one of the possible inducers of aberrant methylation. The presence of aberrant methylation is frequently observed in non-cancerous tissues of patients with inflammation-associated cancers, such as liver cancers, ulcerative colitis-associated colon cancers, and gastric cancers (3–7). However, a causal role of chronic inflammation in methylation induction remains to be established.

**Authors' Affiliations:** <sup>1</sup>Carcinogenesis Division, National Cancer Center Research Institute, Chuo-ku, Tokyo, Japan; <sup>2</sup>Division of Oncological Pathology, Aichi Cancer Center Research Institute, Chikusa, Nagoya, Japan; and <sup>3</sup>Second Department of Internal Medicine, Wakayama Medical University, Wakayama, Japan

**Note:** Supplementary data for this article are available at Cancer Research Online (<http://cancerres.aacrjournals.org>).

**Corresponding Author:** Toshikazu Ushijima, Carcinogenesis Division, National Cancer Center Research Institute, 5-1-1-Tsukiji, Chuo-ku, Tokyo 104-0045, Japan. Phone: 81-3-3542-2511; Fax: 81-3-5565-1753; E-mail: [tushijim@ncc.go.jp](mailto:tushijim@ncc.go.jp).

doi: 10.1158/0008-5472.CAN-09-2755

©2010 American Association for Cancer Research.

In human gastric mucosae, the presence of *Helicobacter pylori* (*HP*) infection, a well-known inducer of chronic inflammation and gastric cancers (8, 9), is associated with high methylation levels or high incidences of methylation (5, 10–12). In addition, among individuals without *HP* infection, noncancerous gastric mucosae of gastric cancer patients have higher methylation levels than gastric mucosae of healthy individuals (5, 10). In addition, eradication of *HP* leads to a decreased incidence of *CDH1* (*E-cadherin*) promoter methylation (11, 13, 14). These findings suggest that *HP* infection induces aberrant methylation in gastric mucosae and indicate that levels of accumulated methylation are associated with gastric cancer risk. However, because infection experiments are impossible in humans, it needs to be clarified in animal models whether or not *HP* infection induces methylation and what mechanisms are involved.

*HP* infection in humans is best modeled in Mongolian gerbils (*Meriones unguiculatus*). As in man, *HP* infection induces severe inflammation in gerbil gastric mucosae and promotes gastric carcinogenesis induced by administration of *N*-methyl-*N*-nitrosourea (MNU) or *N*-methyl-*N'*-nitrosoguanidine (15). The incidence of gastric cancers in gerbils depends on the duration of *HP* infection, and eradication of *HP* significantly reduces the incidence (16), as in man (17, 18). Thus, we can expect that the gerbil model is also useful in analyzing whether *HP* infection induces aberrant methylation and what mechanisms are involved *in vivo*. However, unfortunately,

little information is available for the gerbil genome, and the genetic and molecular analysis of this model has been hampered.

In this study, we aimed to show that *HP* infection is causally involved in induction of aberrant DNA methylation and to clarify a critical factor involved. For this, we first isolated CGIs that could be methylated in gerbil gastric cancers by a genome-wide screening method, methylation-sensitive representational difference analysis (MS-RDA). Using the CGIs isolated, we then showed that methylation was induced specifically in gerbils with *HP* infection and that inflammation induced by *HP* infection, not *HP* itself, was critically involved in methylation induction.

## Materials and Methods

**Cell lines.** Two gerbil gastric cancer cell lines, MGC1 and MGC2, were established from a single gastric cancer induced in a gerbil by MNU and *HP* infection (19). They were maintained in RPMI 1640 supplemented with 10% fetal bovine serum on a type I collagen-coated dish (Asahi Techno Glass). Although we did not check the cross-contamination of cell lines biochemically or genetically just before use, they had the same morphology and growth rates as described previously (19).

**Animal experiments and sample preparation.** Male Mongolian gerbils (MGS/Sea) were purchased from Kyudo. To induce gastric cancers, male gerbils were administered with 30 ppm of MNU (Sigma-Aldrich) in drinking water for a week at 7, 9, 11, 13, and 15 wk of age, and then inoculated with *HP* (ATCC 43504, American Type Culture Collection) by gavage at 17 wk of age (20). At 57 wk, gerbils were sacrificed and stomachs were resected. Because it was difficult to identify cancers macroscopically in gastric mucosae with severe hyperplasia, we dissected an area of gastric cancer tissue by an apparatus for laser microdissection (ASLMD, Leica Microsystems) after histologic confirmation. For temporal analysis of methylation levels, male gerbils were inoculated with *HP* (ATCC 43504) at 5 wk of age. Eradication therapy was done at 55 wk of age by administering amoxicillin, clarithromycin, and lansoprazole by gavage (20). Gerbils that had *HP* after the eradication therapy were excluded from analysis. As a vehicle control, 0.5% of carboxymethyl cellulose was given by gavage. To suppress gastritis, gerbils were administered with 250  $\mu$ g/mL cyclosporin A (CsA; Neoral, Novartis Pharma) in drinking water for 20 wk. The stomach was resected and cut along the greater curvature. From the posterior wall of the pyloric region (pyloric antrum), which contains the pyloric glands, gastric epithelial cells (GEC) were isolated by the gland isolation technique (21). The anterior wall of the pyloric region was further cut into two pieces: one for RNA and DNA extraction from a sample with mucus and mucosal and submucosal layers and the other for histologic analysis. Whole blood was obtained from the inferior vena cava. The animal experiment protocols were approved by the Committee for Ethics in Animal Experimentation.

**Human clinical samples.** Human gastric mucosae were obtained by endoscopic biopsy from 10 *HP*-negative (five

men and five women; average age 42.4 y, ranging from 29 to 56 y) and 10 *HP*-positive (four men and six women; average age 42.4 y, ranging from 23 to 53 y) healthy volunteers, whose *HP* status had been judged by a serum anti-*HP* antibody test (SBS). Gastric cancer samples were obtained from surgical specimens from 14 patients who underwent gastrectomy due to early gastric cancers (seven men and seven women; average age 65.9 y, ranging from 47 to 79 y). Sampling was conducted under the approval of Institutional Review Boards.

**Nucleic acid extraction.** From tissue sections, DNA was extracted by heating the dissected sections at 100°C for 20 min at pH 12, followed by phenol/chloroform extraction (22). From isolated glands, DNA was extracted by proteinase K digestion and the phenol/chloroform method. From the whole blood, DNA was extracted with a QuickGene DNA whole blood kit (Fujifilm). RNA was isolated with Isogen (Wako).

**Quantitative PCR for gene expression analyses and HP detection.** To analyze gene expression levels, cDNA was synthesized from 2  $\mu$ g of DNase-treated RNA with an oligo-d(T)<sub>12-18</sub> primer. Real-time PCR using gene-specific primers (Supplementary Table S1) and SYBR Green Real-time PCR Master Mix (TOYOBO) was done, and the amplification curve of a sample was compared with curves of standard DNA samples with known copy numbers. Standard DNA samples were prepared by serial dilution of a PCR product or a plasmid containing a cloned PCR fragment after its quantification. Gene expression levels were normalized to that of *Gapdh*. To measure the amount of *HP*, real-time PCR using specific primers for the *jhpr3* gene of *HP* was carried out and normalized to the gerbil *Il4* gene (Supplementary Table S1).

**Methylation-sensitive representational difference analysis.** MS-RDA is a subtraction method that can identify differentially methylated loci between two genomes independent of genomic information (23) and was done using *HpaII* or *SacII* methylation-sensitive restriction enzyme as described previously (24). The final PCR product was cloned into pGEM T-Easy (Promega) and sequenced. If a DNA fragment had a CpG score  $\geq 0.65$  and G + C content  $\geq 55\%$ , the fragment was considered to be derived from a CGI. To identify homologous regions in mice and men, database searches were carried out at a GenBank web site.

**Methylation analysis.** Fully methylated and fully unmethylated controls were prepared by methylating genomic DNA with *SssI* methylase (New England Biolabs) and amplifying genomic DNA with  $\phi 29$  DNA polymerase (GenomiPhi DNA Amplification Kit, GE Healthcare), respectively (25). One microgram of DNA digested with *BamHI* was treated with sodium bisulfite and suspended in 80  $\mu$ L of Tris-EDTA (TE) buffer as described previously (22). In the case of paraffin-embedded samples, DNA was treated with sodium bisulfite without *BamHI* digestion and suspended in 20  $\mu$ L of TE buffer. One microliter of aliquot was used as a template for methylation-specific PCR (MSP) and bisulfite sequencing. Conventional MSP and bisulfite sequencing were done with specific primer sets (Supplementary Table S2) as described previously (22). Quantitative MSP (qMSP) was done



**Table 1.** CGIs methylated in gerbil gastric cancer cell lines and *HP*-infected GECs

Clone name	GenBank accession no.	Genomic location deduced from analyses using human or mouse genome database	Nucleotide position in human or mouse sequences
HE6	AB429514	Exon 2 of <i>Ntrk2</i> gene*	16,449,514–16,449,840 bp in NT_023935.17 (human chr. 9)
HG2	AB429515	Exon 1 of <i>Gpr37</i> gene*	49,589,571–49,589,704 bp in NT_007933.14 (human chr. 7)
SA9	AB429516	Exon 1 of <i>Nol4</i> gene*	13,292,105–13,292,430 bp in NT_010966.13 (human chr. 18)
SB1	AB429517	Intergenic region between <i>Sp4</i> and <i>Sp8</i> genes*	20,698,454–20,698,697 bp in NT_007819.16 (human chr. 7)
SB5	AB429513	Not identified	Not identified
SC3	AB429518	Promoter region of <i>Rnf152</i> gene*	7,352,575–7,352,875 bp in NT_025028.13 (human chr. 18)
SD2	AB429519	Promoter region of <i>Nptx2</i> gene*	23,480,374–23,480,422 bp in NT_007933.14 (human chr. 7)
SE3	AB429520	Intron 1 of <i>Slc35f1</i> gene*	39,311,942–39,312,270 bp in NT_001838990.2 (human chr. 6)
SF12	AB429521	Intergenic region between <i>Cntr1</i> and <i>Pdzm4</i> genes	53,513,634–53,513,936 bp in NT_039621.7 (mouse chr. 15)
SH6	AB429522	Intergenic region between <i>Sox1</i> and <i>Loc729095</i> gene*	213,253–213,298 bp in NT_027140.6 (human chr. 13)

\*Conserved regions identified in the human database.

by real-time PCR using primers specific to DNA molecules methylated at a locus and to a repeat sequence. Methylation levels were expressed as a percentage of the methylated reference, which was obtained as [(number of methylated fragments of a target CGI in sample) / (number of repeat sequences in sample)] / [(number of methylated fragments of a target CGI in *SssI*-treated DNA) / (number of repeat sequences in *SssI*-treated DNA)] × 100. As a repeat sequence, the B2 repeat was used for gerbil DNA (ref. 26; Supplementary Table S2 and Supplementary Fig. S1) and the *Alu* repeat was used for human DNA (27).

**Statistical analysis.** Statistical analyses were conducted with SPSS 13.0J (SPSS Japan, Inc.). To evaluate significant difference between two independent groups of sample data, the Mann-Whitney *U* test was used. Spearman's rank correlation coefficient (*r*) was used to measure correlation.

## Results

**Identification of CGIs specifically methylated by *HP* infection in GECs of Mongolian gerbils.** To identify CGIs methylated in GECs of gerbils with *HP* infection, we adopted the strategy of a genome-wide screening in cancers and high-sensitivity analysis in GECs. The genome-wide screening was done by MS-RDA using a pool of two gerbil gastric cancer cell lines (MGC1 and MGC2) as the driver and GECs of noninfected gerbils as the tester. The final products of two series of MS-RDA using *HpaII* and *SacII* were cloned and 180 DNA fragments were sequenced. One hundred three of them were

nonredundant, and 56 of them contained a sequence likely to have originated from a CGI. Due to the lack of information on the gerbil genome, we first analyzed the methylation statuses of CpG sites within the DNA fragments isolated using MSP. MSP primers were successfully designed for 27 of the 56 DNA fragments, and we analyzed the two gastric cancer cell lines, five samples of GECs from gerbils infected with *HP* for 50 weeks, and five samples of GECs from age-matched gerbils without infection. Ten (HE6, HG2, SA9, SB1, SB5, SC3, SD2, SE3, SF12, and SH6) of the 27 DNA fragments were methylated in the cell lines and GECs of *HP*-infected gerbils, but not in any GECs of gerbils without infection (Table 1; Fig. 1). The others were methylated only in the cell lines or methylated even in GECs of gerbils without infection.

Methylation in primary gastric cancers was analyzed for three randomly selected CGIs (HE6, SA9, and SB5). The methylation levels of HE6 and SB5 in eight primary cancer samples were similar to or below the mean methylation levels in GECs with *HP* infection for 50 weeks. In contrast, the methylation level of SA9 in most cancer samples was 2.1- to 19.1-fold higher than the mean methylation level in GECs from *HP*-infected gerbils (Supplementary Fig. S2). These results suggested that *HP* infection induced aberrant methylation of multiple but specific CGIs in gerbil GECs, and that methylation of some of these CGIs was associated with growth advantage of the cells.

**Methylation of the corresponding CGIs in human samples.** To examine whether or not these CGIs are also methylated in humans by *HP* infection, conserved regions of the

10 gerbil CGIs in humans were searched for. Eight of the 10 CGIs were found to be conserved between gerbils and humans (marked in Table 1), and five were located in the vicinities of genes (Fig. 2A, left). When the methylation levels of these five CGIs were quantified in human gastric mucosal biopsies, all of them had 5- to 48-fold higher methylation levels in individuals with *HP* infection ( $n = 10$ ) than in those without ( $n = 10$ ; right). Their methylation levels had close correlation with each other (correlation coefficient = 0.70–0.88; Supplementary Table S3).

The methylation levels of the five CGIs were then analyzed in primary human gastric cancers. *NTRK2*, *GPR37*, *NOLA*, and *NPTX2* had methylation in seven, three, four, and five, respectively, of 14 cancers analyzed, using the average methylation level of mucosal biopsies of *HP*-infected healthy volunteers as a threshold. There was no case with methylation of *RNF152* (Fig. 2B). These results showed that some of these CGIs were also methylated in human gastric cancers.

#### Induction of DNA methylation by chronic *HP* infection.

Using the 10 CGIs isolated by MS-RDA, the effect of *HP* infection on methylation induction was analyzed at 1, 5, 10,

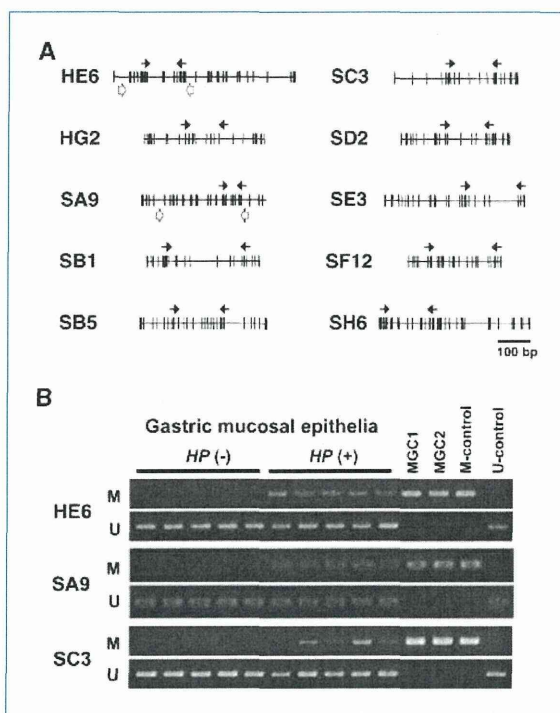
and 50 weeks after *HP* infection (Fig. 3A). The methylation levels of HG2, SB5, and SD2 started to increase at 5 weeks after infection. At 10 weeks, CGIs other than SE3 and SH6 showed significantly higher methylation levels than those of the noninfected gerbils (3.2- to 85.0-fold). At 50 weeks, all the CGIs showed significantly higher methylation levels (14.3- to 215-fold; Fig. 3B; Supplementary Fig. S3). These results suggested that chronic *HP* infection, not acute *HP* infection, was responsible for methylation induction.

The presence of dense methylation (methylation of a majority of CpG sites on a single DNA molecule) was confirmed by bisulfite sequencing of HE6 and SA9 in GECs of two gerbils with *HP* infection and two without. Densely methylated DNA molecules were detected only in *HP*-infected gerbils (Fig. 3C). The vast majority of DNA molecules were either largely unmethylated or largely methylated, and the fraction of methylated DNA molecules was in accordance with methylation levels measured by qMSP. The methylation levels of the 10 CGIs closely correlated with each other (average correlation coefficient = 0.87; range 0.70–0.95; Fig. 3D; Supplementary Table S4).

**Decrease in methylation levels after *HP* eradication.** *HP* was eradicated at 50 weeks after infection, and the methylation levels of the 10 CGIs were measured in GECs of the gerbils before and 1, 10, and 20 weeks after the eradication (Fig. 3A). Complete absence of *HP* was confirmed by PCR of *HP* genomic DNA (Fig. 4C). At 1 week after eradication, no decrease in methylation was observed (Fig. 3B; Supplementary Fig. S3). At 10 weeks after eradication, in contrast, the methylation levels of the 10 CGIs decreased to 9% to 32% of those before the eradication (significant for 9 of the 10 CGIs, except for SH6). An additional 10 weeks (20 weeks after eradication) did not lead to a further decrease in methylation levels. Importantly, the methylation levels after the decrease due to eradication were still significantly ( $P < 0.01$  for two CGIs, and  $P < 0.05$  for seven CGIs) higher than those in gerbils without any *HP* infection in their life.

**Close association between methylation induction and inflammation, and not *HP* itself.** *HP* infection is known to induce severe inflammation in gastric mucosae in gerbils, as in humans. Histologic analysis revealed that infiltration of polymorphonuclear cells and mononuclear cells started at 5 to 10 weeks after *HP* infection, and it became severe at 50 weeks (Fig. 4A; Supplementary Fig. S4). After eradication, a decrease in infiltration was not clear at 1 week, but was marked by 10 and 20 weeks (Fig. 4A). These histologic findings were paralleled by expression of inflammatory cell markers [*Cd3g*, *Cd14*, *Ela2*, and *Ms4a1* (*Cd20*) for T cell, macrophage, neutrophil, and B cell, respectively] in gastric tissues containing both mucosal and submucosal layers (Fig. 4B). Although *Ms4a1* expression decreased after eradication, gerbils without eradication (continuous infection) also showed a similar decrease, indicating that the decrease in *Ms4a1* expression (B-cell infiltration) was independent of *HP* eradication.

To explore the components of inflammation associated with methylation induction, the expression of inflammation-related genes [*Cox2*, *Cxcl2* (*MIP-2*), *Ifn $\gamma$* , *Il1b*, *Il2*, *Il4*,



**Figure 1.** Isolation of CGIs that were aberrantly methylated in gerbil gastric cancers and GECs. A, a CpG map of the fragment isolated by MS-RDA. Vertical lines, individual CpG sites; arrows, positions of MSP primers; open arrows (HE6 and SA9), positions of bisulfite sequencing primers. B, representative results of MSP analyses in GECs from gerbils with and without *HP* infection for 50 wk and gastric cancer cell lines. M, MSP using a primer pair specific to methylated DNA; U, MSP using a primer pair specific to unmethylated DNA; M-control, genomic DNA treated with *SssI* methylase; U-control, DNA amplified with GenomiPhi.

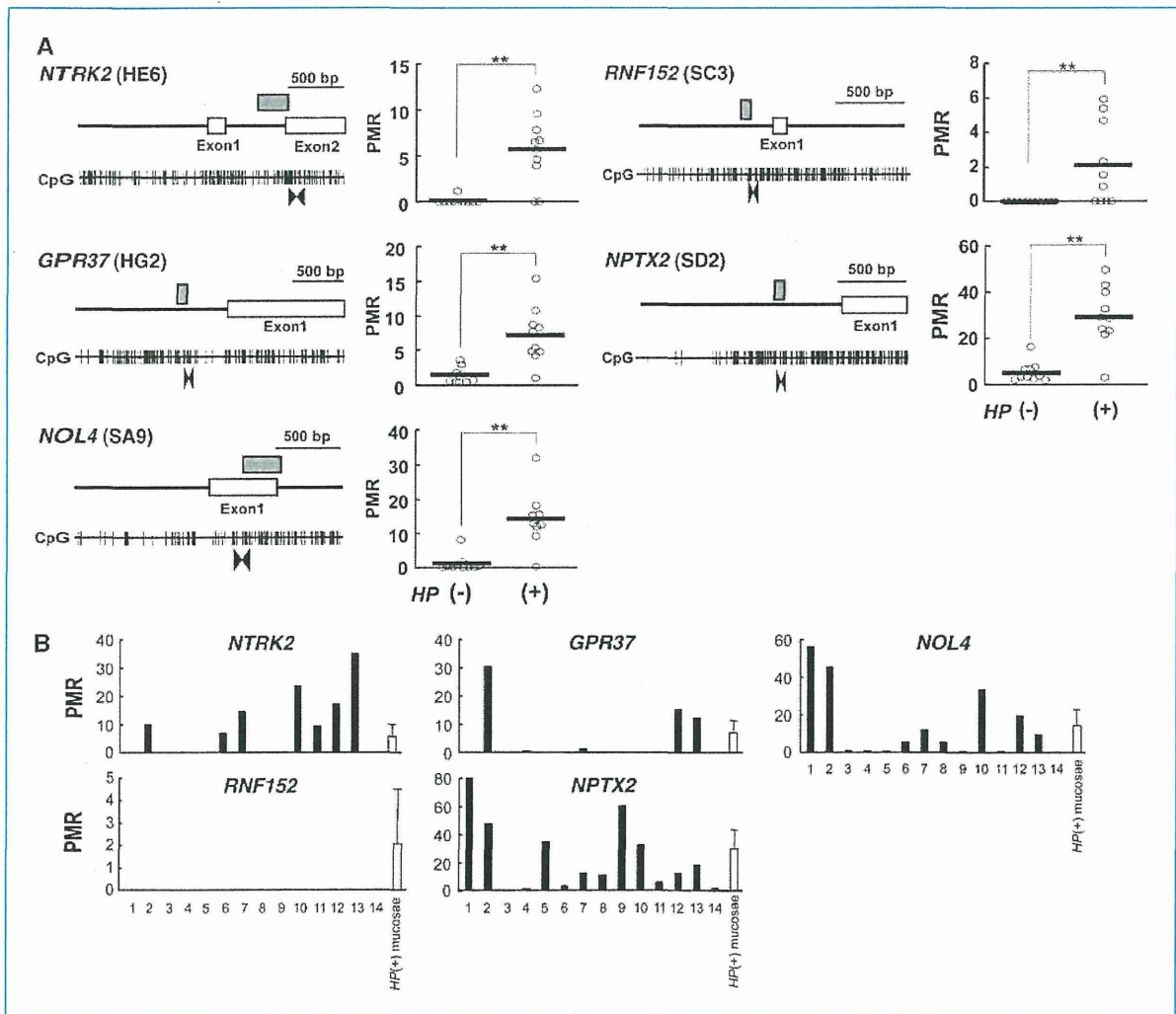


*Il6*, *Il7*, *Nos2* (*iNos*), and *Tnf* (*Tnf- $\alpha$* ) was also quantified (Fig. 4B). A marked increase after *HP* infection and a decrease after eradication were observed for *Cxcl2*, *Il1b*, *Nos2*, and *Tnf*, paralleling inflammatory cell markers (Fig. 4B). The *Cox2*, *Irfg*, *Il2*, *Il4*, and *Il6* expression did not parallel the methylation levels after *HP* eradication, and the *Il7* expression showed a paradoxical increase compared with the group of continuous infection (Fig. 4B). Regarding the amount of *HP* in gastric mucosae, it had no association with methylation levels (Fig. 4C).

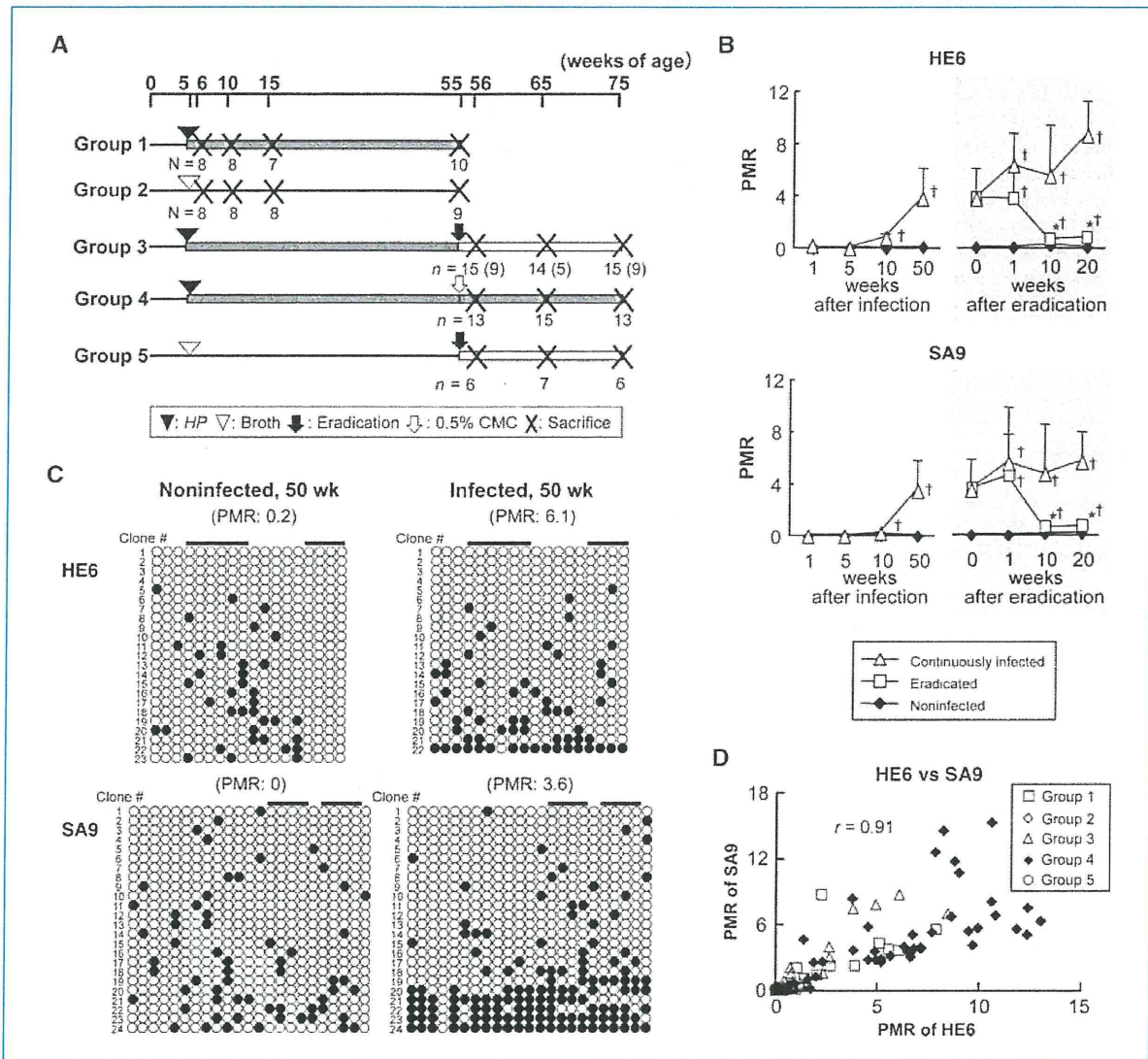
There remained a possibility that inflammatory cells had methylation of the CGIs analyzed, and that their contamination into GECs led to an apparent increase in methylation

levels. To exclude this possibility, we analyzed the methylation levels of the 10 CGIs in DNA extracted from the whole blood of *HP*-infected gerbils. With the exception of SB1 and SB5, which showed relatively high methylation levels in the blood, 8 of the 10 CGIs showed almost no methylation (Supplementary Fig. S5). This excluded the possibility that methylation detected in the GECs was due to methylation in inflammatory cells contaminating the GECs.

**Suppression of methylation induction by suppression of inflammation.** To conclude that inflammation is indispensable for methylation induction, we suppressed *HP*-induced inflammation by administration of CsA, which blocks T-cell activation through inhibition of the calcineurin signal



**Figure 2.** Methylation of homologous regions in human gastric mucosae. A, methylation levels in human gastric mucosal biopsies. Left, genomic structures and the regions analyzed by qMSP. Vertical lines, individual CpG sites; gray box, regions with homology between gerbil and man; open boxes, exons; faced arrowheads, positions of primers for qMSP. Right, result of qMSP analyses. Methylation levels were quantified in 10 healthy volunteers without *HP* infection and 10 with *HP* infection. Bold horizontal bars, average. \*\*,  $P < 0.01$ . B, methylation levels in primary gastric cancers. Fourteen primary gastric cancer samples and a pool of 10 mucosal biopsies of *HP*-infected healthy volunteers were analyzed. For the gastric mucosae, their mean methylation level and SD are shown. PMR, percentage of the methylated reference.



**Figure 3.** Temporal profiles of DNA methylation levels after *HP* infection and its eradication. A, experimental design for *HP* infection and eradication. The numbers of gerbils that were successfully eradicated of *HP* are indicated in parentheses. B, temporal profiles of methylation levels. Methylation levels are shown as mean  $\pm$  SD. †,  $P < 0.05$ , compared with noninfected gerbils; \*,  $P < 0.05$ , compared with the methylation level before the eradication. C, the presence of dense methylation in the GECs of gerbils with *HP* infection. Bisulfite sequencing of HE6 and SA9 was done in GECs of a gerbil infected with *HP* for 50 wk and an age-matched control gerbil. The fractions of clones with dense methylation were in accordance with methylation levels (percentages of the methylated reference given in parentheses). Bars, CpG sites on which qMSP primers were designed. Similar patterns were observed for another pair of noninfected and infected gerbils (data not shown). D, scattered plot of methylation levels of HE6 versus those of SA9. The values of all 149 gerbils whose methylation was analyzed in this study were plotted.  $r$ , correlation coefficient.

(ref. 28; Fig. 5A). Macroscopically, administration of CsA to *HP*-infected gerbils markedly suppressed erosion and the formation of nodules. Histologically, it suppressed induction of hyperplasia almost completely, but infiltration of mononuclear and polymorphonuclear cells remained (Fig. 5B). Importantly, the number of *HP* colonized in the stomach was not affected by the CsA treatment (Supplementary Fig. S6). The expression levels of inflammatory cell markers (*Cd3g*, *Cd14*, and *Ela2*) were not reduced, indicating that the

number of inflammatory cells normalized against other cells was not affected. However, the expression of three inflammation-related genes (*Cxcl2*, *Illb*, and *Nos2*), whose expression paralleled methylation induction in the temporal analysis, was significantly reduced by the CsA treatment (Fig. 5C).

The DNA methylation levels of the 10 CGIs were markedly reduced in GECs of CsA-treated gerbils (0% to 28% of methylation levels of GECs from *HP*-infected gerbil without the