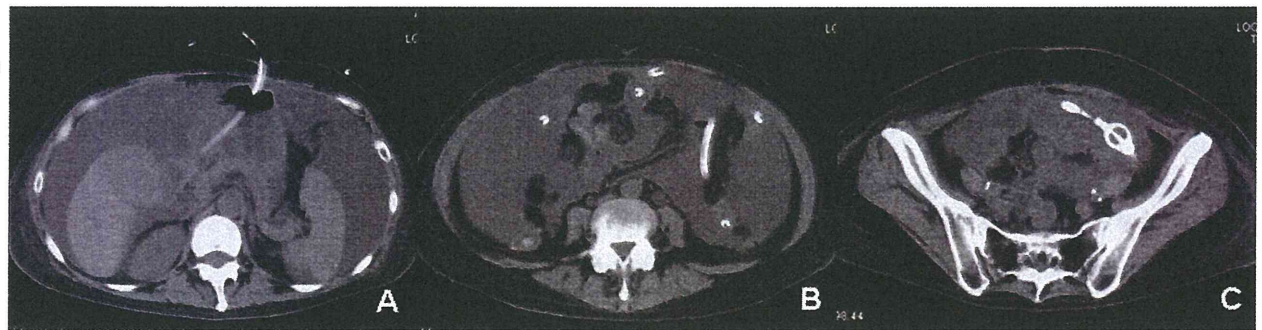




**Figure 1** Percutaneous gastrostomy tube insertion was performed endoscopically, while a transnasal postpyloric decompression tube was present in her stomach.



**Figure 2** Postpyloric decompression tube was inserted through the gastrostomy.

may be a reasonable approach, especially in patients hesitating to undergo tube placement via the conventional nasal approach and/or in gynecologic malignancies patients who are not good surgical candidates.

In conclusion, insertion of a postpyloric decompression tube through a gastrostomy might be useful in the management of advanced cancer patients with bowel obstruction.

### Consent

Written informed consent was obtained from the patient and her family for publication of this Case report and any accompanying images. A copy of the written consent is available for review by the Editor of this journal.

### Competing interests

The authors declare that they have no competing interest.

### Authors' contributions

TK, AK and MI gave information about gastrostomy. SW and MI collect clinical data. YS, HI and TN gave information about endoscopy. AK gave information about palliative care. YK, TO and MI wrote the manuscript. EG, SM and AN supervised the manuscript. All authors read and approved the final manuscript.

### Acknowledgements

Special thanks to medical staff of Yokohama City University Hospital.

### Author details

<sup>1</sup>Gastroenterology Division, Yokohama City University Hospital, 3-9 Fukuura, Kanazawa-ku, Yokohama 236-0004, Japan. <sup>2</sup>Department of Medical Education, Yokohama City University School of Medicine, Yokohama, Japan.

Received: 21 December 2012 Accepted: 23 May 2013

Published: 3 June 2013

### References

1. Mori M, Bruera E, Dev R: Complications of a gastrostomy tube used for decompression of an inoperable bowel obstruction in a patient with advanced cancer. *J Pain Symptom Manage* 2009, **38**:466-472.
2. Mangili G, Aletti G, Frigerio L, Franchi M, Panacci N, Viganò R, DE Marzi P, Zanetto F, Ferrari A: Palliative care for intestinal obstruction in recurrent ovarian cancer: a multivariate analysis. *Int J Gynecol Cancer* 2005, **15**:830-835.
3. Meyer L, Pothuri B: Decompressive percutaneous gastrostomy tube use in gynecologic malignancies. *Curr Treat Options Oncol* 2006, **7**:111-120.
4. Dolan EA: Malignant bowel obstruction: a review of current treatment strategies. *Am J Hosp Palliat Care* 2011, **28**:576-582.
5. Rezk Y, Timmins PF 3rd, Smith HS: Review article: palliative care in gynecologic oncology. *Am J Hosp Palliat Care* 2011, **28**:356-374.
6. Roeland E, von Gunten CF: Current concepts in malignant bowel obstruction management. *Curr Oncol Rep* 2009, **11**:298-303.

doi:10.1186/1756-0500-6-217

**Cite this article as:** Kurita et al.: Postpyloric decompression tube placement through a gastrostomy for malignant bowel obstruction. *BMC Research Notes* 2013 **6**:217.

# Soluble CD14 Levels Reflect Liver Inflammation in Patients with Nonalcoholic Steatohepatitis

Yuji Ogawa<sup>1</sup>\*, Kento Imajo<sup>1</sup>, Masato Yoneda<sup>1</sup>, Takaomi Kessoku<sup>1</sup>, Wataru Tomeno<sup>1</sup>, Yoshiyasu Shinohara<sup>1</sup>, Shingo Kato<sup>1</sup>, Hironori Mawatari<sup>1</sup>, Yuichi Nozaki<sup>1</sup>, Koji Fujita<sup>1</sup>, Hiroyuki Kirikoshi<sup>1</sup>, Shin Maeda<sup>1</sup>, Satoru Saito<sup>1</sup>, Koichiro Wada<sup>2</sup>, Atsushi Nakajima<sup>1\*</sup>

**1** Department of Gastroenterology, Yokohama City University Graduate School of Medicine, Yokohama, Japan, **2** Department of Pharmacology, Osaka University Graduate School of Dentistry, Suita, Japan

## Abstract

**Background & Aims:** Liver inflammation is a risk factor for the progression of nonalcoholic fatty liver disease (NAFLD). However, the diagnosis of liver inflammation is very difficult and invasive liver biopsy is still the only method to reliably detect liver inflammation. We previously reported that overexpression of CD14 in Kupffer cells may trigger the progression to nonalcoholic steatohepatitis (NASH) via liver inflammation following hyper-reactivity to low-dose lipopolysaccharide. Therefore, the aim of this study was to investigate the relationship between soluble type of CD14 (sCD14) and histological features in patients with NAFLD.

**Methods:** Our cohort consisted of 113 patients with liver biopsy-confirmed NAFLD and 21 age-matched healthy controls. Serum sCD14 levels were measured by an enzyme-linked immunosorbent assay.

**Results:** Serum sCD14 levels were significantly associated with diagnosis of NASH and the area under the receiver operator characteristic curve (AUROC) to distinguish between not NASH and NASH was 0.802. Moreover, serum sCD14 levels were significantly associated with the disease activity based on NAFLD activity score and hepatic CD14 mRNA expression, which is correlated with membrane CD14 (mCD14) expression, in patients with NAFLD. In multiple regression analysis, the serum sCD14 levels were independently associated with liver inflammation. The AUROC to distinguish between mild and severe liver inflammation in patients with NAFLD was 0.752.

**Conclusions:** We found that serum sCD14 levels increased significantly with increasing liver inflammation grade in patients with NAFLD, reflecting increased hepatic CD14 expression. Serum sCD14 is a promising tool to predict the worsening of liver inflammation, and may offer a potential biomarker for evaluation of therapeutic effects in NAFLD.

**Citation:** Ogawa Y, Imajo K, Yoneda M, Kessoku T, Tomeno W, et al. (2013) Soluble CD14 Levels Reflect Liver Inflammation in Patients with Nonalcoholic Steatohepatitis. PLoS ONE 8(6): e65211. doi:10.1371/journal.pone.0065211

**Editor:** Nikki Pui-yue Lee, The University of Hong Kong, Hong Kong

**Received:** November 13, 2012; **Accepted:** April 24, 2013; **Published:** June 7, 2013

**Copyright:** © 2013 Ogawa et al. This is an open-access article distributed under the terms of the Creative Commons Attribution License, which permits unrestricted use, distribution, and reproduction in any medium, provided the original author and source are credited.

**Funding:** Work in the authors' laboratory was supported by the program "Step A" from the Japan Science and Technology Agency (JST) and Kiban-B, Shingakujuturyouiki. In addition, the present work was supported in part by grants-in-aid from the Japanese Ministry of Health, Labour and Welfare. The funders had no role in study design, data collection and analysis, decision to publish, or preparation of the manuscript.

**Competing Interests:** The authors have declared that no competing interests exist.

\* E-mail: nakajima-ky@umin.ac.jp

☞ These authors contributed equally to this work.

## Introduction

Nonalcoholic fatty liver disease (NAFLD) is a major cause of chronic liver injury in many countries [1,2]. A recent study showed that the risk of developing NAFLD is 4–11 times higher in patients with metabolic syndrome, compared with healthy individuals [3]. NAFLD ranges from benign simple steatosis to nonalcoholic steatohepatitis (NASH), while NASH often progresses to severe fibrosis [4,5] and hepatocellular carcinoma [6–8]. In addition, the mechanisms involved in the development of NASH are not fully understood and the therapeutic options limited. Therefore, predicting the progression of simple steatosis to NASH and developing methods to facilitate the precise diagnosis of NASH are important targets for clinical research.

Inflammation is a central process in the pathogenesis of NASH. Previous reports have shown that chronic liver inflammation is an important contributing factor to the pathogenesis of NASH and the key predictor of histological progression [9–11]. Therefore, precise detection and evaluation of liver inflammation are important to help predict the progression of NASH. In fact, several clinical biomarkers associated with systemic inflammation, including serum high-sensitivity C-reactive protein (CRP) [12] and cytokines [13], have been proposed as potential markers of liver inflammation to aid NASH diagnosis. However, no clinical studies have confirmed the usefulness of these markers to date. Therefore, invasive liver biopsy is still the only method to reliably detect liver inflammation and reach a definite diagnosis of NASH. However, this procedure is invasive and is associated with a relatively high risk of complications [14], emphasizing the clinical importance of

identifying biomarkers for liver inflammation in patients with NAFLD.

We recently discovered that leptin-induced overexpression of CD14 in the liver is an important component of the pathogenesis of NASH [15]. We found that CD14 overexpression resulted in a hyper-responsiveness to low-dose lipopolysaccharide (LPS), an important step in the progression from simple steatosis to steatohepatitis, and was associated with liver inflammation and fibrosis [15]. These results suggest that measuring hepatic CD14 expression, which reflects its expression in Kupffer cells, may be useful to predict liver inflammation in NASH. However, invasive biopsies are still required to collect the tissue samples used to measure liver CD14 expression.

CD14 is a co-receptor that is detected in two forms: a glycosylphosphatidylinositol-anchored membrane protein (mCD14) and a soluble serum protein (sCD14) lacking the anchor protein [16]. Additionally, several reports have shown that sCD14 is shed from the surface of mCD14-expressing cells [16–18], although the exact roles of sCD14 are still unknown. Therefore, we hypothesized that serum sCD14 levels, shed from mCD14, might be highly correlated with hepatic CD14 expression levels in NASH patients, and could predict the severity of NASH, particularly liver inflammation. If this hypothesis is correct, measuring serum sCD14 levels may be very useful to predict the progression of NASH and could become a routine test for the assessment in NAFLD patients for predicting NASH progression instead of invasive liver biopsy. Therefore, the purpose of this study was to investigate the clinical usefulness of measuring serum sCD14 levels as a biomarker for assessing the severity of NASH.

## Patients and Methods

### Subjects

The study population consisted of 113 patients with biopsy-confirmed NAFLD and 21 healthy control subjects, aged  $\geq 20$  years, who attended Yokohama City University between April 2007 and March 2012. We obtained written informed consent from all subjects before conducting examinations. The study was conformed to the ethical guidelines of the Declaration of Helsinki and approved by the Ethics Committee at Yokohama City University. Subjects with a history of excessive alcohol consumption (weekly consumption  $>140$  g for men,  $>70$  g for women), other liver diseases, use of drugs associated with fatty liver, and clinically significant weight loss, for example, were excluded. Twenty-one healthy subjects with a mean age and sex ratio similar to those of the NAFLD group were also enrolled. Liver enzyme levels and ultrasound scans were normal for all of the healthy subjects. For the purpose of this study, subjects diagnosed with diabetes mellitus before the present admission and subjects with fasting plasma glucose  $>126$  mg/dl and/or serum HbA1c  $>6.1\%$  were defined as having diabetes mellitus. Subjects taking antidiabetic drugs and subjects with cholesterol  $>220$  mg/dl and/or triglyceride  $>150$  mg/dl were defined as having dyslipidemia. Subjects using antihypertensive drugs and subjects with resting blood pressure exceeding 130/85 mmHg on at least two occasions were defined as having hypertension.

### Clinical and Laboratory Evaluations

Body weight and height were measured with a calibrated scale after the subjects had removed their shoes and any heavy clothing. Venous blood samples were obtained after an overnight (12 h) fast and were used to measure serum glucose, aspartate aminotransferase (AST), alanine aminotransferase (ALT), CRP, ferritin, and insulin. Serum insulin levels were measured using a radioimmuno-

assay. The other parameters were measured using a conventional automated analyzer. Insulin resistance was calculated using the modified homeostasis model assessment of insulin resistance (HOMA-IR) equation:  $\text{HOMA-IR} = \text{fasting insulin } (\mu\text{U/ml}) \times \text{plasma glucose } (\text{mg/dl}) / 405$ , as originally reported by Matthews et al [19].

### Anthropometry and Abdominal Fat Distribution

Abdominal fat distribution was determined by computed tomography (CT) with the subjects in a supine position, as previously described [20]. Subcutaneous fat area and intra-abdominal visceral fat area were measured at the level of the umbilicus using a standardized method based on CT values. A histogram representing the fat tissue was computed based on the mean attenuation  $\pm 2$  standard deviations (SDs).

### Measurement of Serum sCD14 Levels

Serum sCD14 levels were measured by a sandwich enzyme-linked immunosorbent assay (R&D Systems, Abingdon, UK). The intra- and interassay coefficients of variation stated by the manufacturers were  $<7\%$  for all assays.

### Histological Assessment

We performed liver biopsies with an 18G needle biopsy kit using a standard protocol. Two specimens were obtained to provide a sufficient sample size for analysis and to reduce histological errors. Liver biopsy samples were excised and embedded in paraffin for histological analysis. The presence of collagen, as an index of lesion fibrosis, was examined in Masson's trichrome-stained preparations. Histological assessment of liver was performed by two pathologists according to criteria proposed by Sanyal and Brunt et al. [21–22]. Macrovesicular steatosis affecting at least 5% of the hepatocytes was observed in all the cases of NAFLD, and the patients were classified as not having steatohepatitis (not NASH) or having steatohepatitis (NASH). In addition to steatosis, the minimum criteria for the diagnosis of steatohepatitis include the presence of lobular inflammation, ballooning of cells and perisinusoidal/pericellular fibrosis in zone 3 of the hepatic acini. Steatosis was graded as  $<5\%$  (grade 0), 5–33% (grade 1), 33–66% (grade 2), and  $>66\%$  (grade 3). Lobular inflammation was graded according to the number of inflammatory foci per field of view at a magnification of 200 $\times$ , as follows: no foci = 0,  $<2$  foci per field = 1, 2–4 foci per field = 2, and  $>4$  foci per field = 3. Hepatocellular ballooning was graded as none (grade 0), few ballooning cells (grade 1), and many balloon cells (grade 2). The pathologists also performed NAFLD activity scoring based on Kleiner et al [23] to evaluate disease activity, but the actual diagnosis was not based on NAFLD activity score (NAS) [21]. The NAS was calculated as the unweighted sum of the scores for steatosis, lobular inflammation, and hepatocellular ballooning based on the Nonalcoholic Steatohepatitis Clinical Research Network methodology. The severity of fibrosis was scored according to the method of Brunt [22]. Subjects with NASH-associated cirrhosis were defined according to a previously proposed clinicopathological classification [24].

### RNA Isolation and Real-Time PCR Analysis

Total RNA was extracted from liver tissue samples from patients with NAFLD ( $n=70$ ) using the RNeasy mini kit (QIAGEN, Tokyo, Japan). The mRNA expression levels of human CD14 and  $\beta$ -actin were determined in liver tissue by fluorescence-based RT-PCR on an ABI PRISM 7700 Sequence Detection System (Life Technologies, Carlsbad, CA).

## Cell Culture

The murine monocyte/macrophage cell line RAW264.7 was obtained from ATCC (Rockville, MD). Cells were cultured at 37°C under 5% CO<sub>2</sub> in Dulbecco's modified Eagle's medium (ASAHI TECHNO GLASS Co., Tokyo, Japan), and supplemented with 100 units/mL penicillin and 100 mg/mL streptomycin plus 10% fetal bovine serum. After incubation, the medium was treated with LPS (10 ng/mL) in PBS for 2 or 4 h. PBS supernatants were recovered, treated with protease inhibitor mixture (Sigma-Aldrich), and centrifuged at 10,000 × *g* for 10 min, following the analysis of sCD14 in the culture medium using by a Western immunoblot analysis and a sandwich enzyme-linked immunosorbent assay. Proteins were incubated with anti-mouse CD14 antibodies (BD Pharmingen), and HRP-conjugated secondary antibody (Cell Signaling Technology).

## Statistical Analysis

Continuous variables are summarized as means ± standard deviation, while categorical variables are summarized as percentages. Spearman's correlation coefficient was used to determine the correlations between serum sCD14 levels and the factors of interest. The *t*-test was used for univariate comparisons between groups of subjects. Because many of the variables were not normally distributed, we used the Kruskal–Wallis test for comparisons of more than two independent groups. We assessed the diagnostic performance of serum sCD14 levels by analyzing the receiver operating characteristic (ROC) curves. The ROC curve is a plot of sensitivity versus 1– specificity for all possible cutoff values. The most commonly used index of accuracy is the area under the ROC curve (AUROC), with values close to 1.0 indicating a high diagnostic accuracy. The accuracy of serum sCD14 levels for discriminating between mild and severe inflammation was determined by calculating the sensitivity, specificity, positive predictive value (PPV), and negative predictive value (NPV). Multivariate analysis was performed using logistic regression analysis. In all analyses, values of *P*<0.05 were considered statistically significant. All statistical analyses were performed using SPSS software version 12.0 (SPSS, Inc., Chicago, IL).

## Results

### Patient Characteristics

The clinical and biochemical characteristics of the healthy controls (*n* = 21), and patients without NASH (*n* = 48), and NASH (*n* = 65) are shown in Table 1. The histological findings of the liver biopsy specimens taken from the patients with NAFLD are shown in the lower part of Table 1. The inter-observer agreement between the two pathologists for liver fibrosis stage was 90.2%.

### Serum sCD14 Levels

We measured serum sCD14 levels in the healthy controls and in the two subgroups of patients with NAFLD. We found no marked differences in the serum CD14 levels between the healthy controls and patients without NASH (Fig. 1A). However, the serum sCD14 level was markedly elevated in patients with NASH compared with that in patients without NASH (Fig. 1A). The area under the receiver operating characteristic (ROC) curve for distinguishing between not NASH and NASH using serum sCD14 level was 0.796 (Fig. 1B). Using a cutoff level of greater than 27.3 ng/ml for serum sCD14 level yielded sensitivity and specificity values of 81.5% and 72.5%, respectively. The positive and negative predictive values for the serum sCD14 level of 27.3 ng/ml were 73.6% and 80.6%, respectively.

The correlations between serum sCD14 levels and the clinical characteristics of patients with NAFLD are shown in Table 2. Serum sCD14 levels were significantly correlated with NAS (Spearman's *r* = 0.354, *P* = 0.004) and with individual NAS components, including lobular inflammation, ballooning, and fibrosis. The strongest positive correlation was observed between the serum sCD14 level and the grade of lobular inflammation (*r* = 0.498, *P* < 0.001) (Table 2 and Fig. 1C). These results indicate that serum sCD14 levels closely reflect the disease activity of NAFLD, especially the grade of liver inflammation.

Next, we investigated the relationship between serum sCD14 levels and hepatic CD14 mRNA expression using liver biopsies from patients with NAFLD. As shown in Fig. 1D, the serum sCD14 levels were significantly correlated with the hepatic CD14 mRNA expression levels in patients with NAFLD (*r* = 0.552, *P* < 0.001). These results indicate that serum sCD14 levels in patients with NAFLD closely reflect the hepatic CD14 expression levels.

### Multiple Regression Analysis to Predict Lobular Inflammation in Patients with NAFLD

Next, we investigated the correlation between serum sCD14 levels and other clinical factors that may be involved in lobular inflammation in NAFLD using multiple regression analysis. For this analysis, we divided patients with NAFLD into two categories, mild inflammation (grade 0–1) and severe inflammation (grade 2–3), according to the criteria. The clinical and biochemical characteristics of both groups of patients are shown in Table 3. We performed multiple logistic regression analysis using age, BMI, ALT, CRP, and sCD14, which were significantly higher in patients with severe liver inflammation compared with patients with mild inflammation in univariate analyses. We also included sex in the multivariate analysis because the sex ratio was also significantly different between the two groups. Notably, only the serum sCD14 level was independently associated with grade of liver inflammation in the multiple regression analysis (Table 4).

### Receiver Operator Characteristic Curve for liver inflammation

To discriminate between severe (grade 2–3) and mild (grade 0–1) liver inflammation in NAFLD, we plotted ROC curves and calculated the AUROC (Fig. 2). The resulting AUROC was 0.752. Based on the ROC curve, the optimal cutoff level for severe liver inflammation was 29.5 ng/dl. The sensitivity, specificity, PPV, and NPV were 78.2, 72.4, 79.6, and 62.9%, respectively.

### LPS-induced sCD14 *in vitro*

Finally, to elucidate whether LPS can directly affect secretion of sCD14 from macrophages, we investigated sCD14 levels in the culture medium of RAW264.7 cells, the murine monocyte/macrophage cell line, incubated with LPS using by Western immunoblot analysis and a sandwich enzyme-linked immunosorbent assay. LPS treatment for RAW 264.7 cells significantly increased sCD14 in the cell culture medium (Fig. 3). These results support the observation that LPS increases secretion of sCD14 from macrophages including Kupffer cells.

## Discussion

In the present study, we showed that serum sCD14 levels were significantly associated with diagnosis of NASH. Moreover, the increased sCD14 levels in NASH patients were highly correlated with increased hepatic CD14 expression and liver inflammation, even after adjusting for age, sex, presence of diabetes, dyslipide-

**Table 1.** Clinical and serological characteristics of the control and patient population.

	Controls	Not NASH	NASH	P value*
Number (n)	21	48	65	
Age (years)	44.8±9.0	50.4±13.6	51.4±12.8	0.381
Gender (male; female)	14;7	26;22	36;29	0.328
Body mass index (kg/m <sup>2</sup> )	21.9±2.6	27.9±5.3	29.1±5.1	0.046
Visceral fat area (cm <sup>2</sup> )		141.1±34.9	151.4±40.4	0.171
Subcutaneous fat area (cm <sup>2</sup> )		191.3±54.1	201.9±58.1	0.173
Fasting blood sugar (mg/dl)	84.2±10.1	101.2±25.1	106.2±29.4	0.301
AST (IU/l)	23.8±4.8	40.1±16.1	41.5±17.1	0.284
ALT (IU/l)	22.8±6.2	49.3±27.2	54.3±26.9	0.212
C-reactive protein (mg/l)	0.27±0.21	0.73±0.47	1.35±0.94	0.011
HOMA-IR	0.96±0.17	2.61±1.39	3.66±2.01	0.009
Dyslipidemia (%)	0	17 (35.1)	23 (47.9)	0.052
Hypertension (%)	0	19 (39.5)	20 (41.5)	0.522
Steatosis grade				0.003
5–33%		22	23	
33–66%		19	31	
>66%		7	11	
Lobular inflammation				7 × 10 <sup>-12</sup>
None		15	0	
<2 foci per 200x field		23	31	
2–4 foci per 200x field		8	22	
>4 foci per 200x field		2	12	
Liver cell ballooning				3 × 10 <sup>-16</sup>
None		30	0	
Few balloon cells		16	47	
Many balloon cells		2	18	
Fibrosis stage				3 × 10 <sup>-16</sup>
None		21	0	
Perisinusoidal or periportal		23	38	
Perisinusoidal and portal/periportal		4	20	
Bridging fibrosis		0	5	
Cirrhosis		0	2	

Numbers represent the mean ± SD. Abbreviations: AST, aspartate aminotransferase; ALT, alanine aminotransferase; HOMA-IR, homeostasis model for the assessment of insulin resistance. P values correspond to the comparison of the three subjects groups (not NASH, borderline NASH and definite NASH) using the Kruskal–Wallis tests for continuous factors.

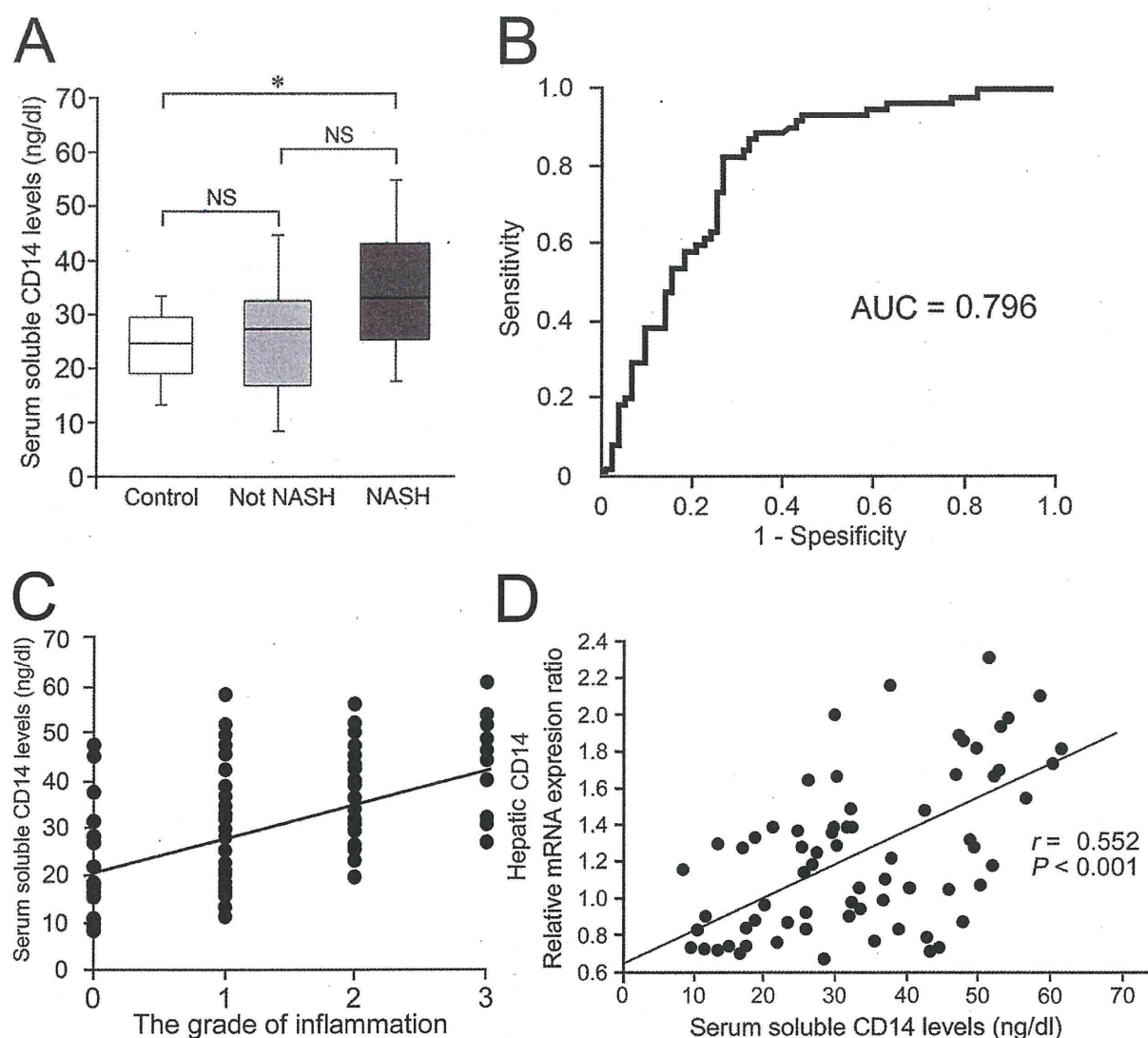
doi:10.1371/journal.pone.0065211.t001

mia, hypertension, BMI, VFA, and SFA. To our knowledge, this is the first report to show that sCD14 in blood is a promising biomarker for diagnosis of NASH and assessing liver inflammation in NASH.

NAFLD, which can progress to steatohepatitis and cirrhosis, is perhaps the most common type of chronic liver disease in obese patients [4–5]. As effective therapies for NAFLD have not yet been established, the identification of risk factors for disease progression, such as severe liver inflammation, would help to guide the implementation of risk-reduction strategies for these patients [25]. However, discrimination between mild and severe liver inflammation in patients with NASH is very difficult if using imaging modalities alone [26]. Indeed, liver biopsy examination is currently the only method that can precisely diagnose NASH and evaluate liver inflammation in patients with NASH [27]. However, liver biopsy is invasive, expensive, and is associated with

a relatively high risk of complications [14]. Moreover, the accuracy of the procedure used to assess the severity of liver fibrosis is questionable because of intra- and inter-observer variation [27–31]. Sampling error has also been reported, even in patients with NASH [32]. Therefore, a non-invasive, reproducible, conceptually simple, and highly reliable test is needed to diagnose NASH and evaluate the severity of liver inflammation in patients with NASH.

CD14 is an effective mediator for the activation of monocytes in response to bacterial endotoxins. The serum sCD14 levels increase during the systemic response to bacterial invasion and endotoxin. Actually, we showed that sCD14 was increased in the culture medium of RAW264.7 cells after LPS treatment, suggesting that sCD14 may be shed from mCD14 in RAW264.7 cells under the effect of LPS. Here, we presented a hypothesis that the increased sCD14 levels in patients with NASH might reflect the severity of



**Figure 1. Serum sCD14 levels, liver inflammation and hepatic CD14 expression.** (A) Serum sCD14 levels in control subjects and patients with NAFLD. The graph shows the interquartile range (box), median (the line), and range (lines) of serum sCD14 levels. The median (range) values (ng/dl) are 24.3 (13.3–32.4), 27.5 (9.21–44.2), and 32.2 (17.9–54.2) for control subjects ( $n=21$ ), not NASH ( $n=48$ ), and NASH ( $n=65$ ), respectively. Statistical significance was determined by analysis of variance with Scheffe's correction for multiple testing.  $*P<0.05$ . (B) Receiver operating characteristic (ROC) curve and area under the ROC curve (AUROC) for distinguishing between not NASH ( $n=48$ ) including control subjects ( $n=21$ ) and NASH ( $n=65$ ) using serum sCD14 level. (C) Relationship between serum sCD14 and the grade of liver inflammation in patients with NAFLD. Serum sCD14 levels are significantly correlated with the grade of liver inflammation (Spearman's  $r=0.498$ ,  $P<0.001$ ). (D) Relationship between serum sCD14 and hepatic CD14 mRNA expression in patients with NAFLD. Serum sCD14 levels are significantly correlated with hepatic CD14 mRNA expression levels (Spearman's  $r=0.552$ ,  $P<0.001$ ). The correlation was determined in 69 patients with NAFLD patients. doi:10.1371/journal.pone.0065211.g001

liver inflammation. Consistent with this hypothesis, we observed as significant association between serum sCD14 levels and definite NASH or the grade of liver inflammation in histological sections in liver biopsy-confirmed NAFLD. Furthermore, our previous report showed that leptin-induced upregulation of hepatic CD14 and the resulting hyper-reactivity to low-dose LPS during NASH progression were closely associated with increased liver inflammation [15]. These results were confirmed by the observation that hepatic CD14 expression was much higher in patients with NASH than in healthy controls and patients with nonalcoholic fatty liver [15]. In the present study, serum sCD14 levels were positively correlated with hepatic CD14 expression levels in patients with NAFLD. These results suggest that serum sCD14 levels might increase following increasing liver inflammation in NAFLD, reflecting

increased hepatic CD14 expression. In other words, the sCD14 is likely to be liver CD14 that is shed into the blood.

Determination of the severity of liver inflammation is important to evaluate the prognosis of patients with NASH. To explore the clinical usefulness of sCD14 as a biomarker for liver inflammation, we investigated the diagnostic ability of serum sCD14 levels using multiple regression analysis and ROC curves. We found that serum sCD14 levels are independently associated with increased risk of severe liver inflammation in NAFLD patients. In addition, we found that a serum sCD14 cutoff level of 29.5 ng/dl showed good sensitivity and specificity for liver inflammation in patients with NAFLD, with values of 78.2 and 72.4%. The resulting AUROC was 0.752, indicating moderate accuracy. These results indicate that the serum sCD14 level is a good biomarker for liver

**Table 2.** Correlations between serum sCD14 level and clinical parameters.

Factor	rho	P-value
Age (years)	-0.082	0.871
Body mass index (kg/m <sup>2</sup> )	0.021	0.522
Visceral fat area (cm <sup>2</sup> )	0.123	0.354
Subcutaneous fat area (cm <sup>2</sup> )	-0.053	0.517
Fasting Blood Sugar (mg/dl)	0.105	0.188
AST (IU/l)	0.136	0.153
ALT (IU/l)	0.214	0.049
C-reactive protein (mg/l)	0.223	0.047
HOMA-IR	0.217	0.052
NAS	0.354	0.004
Steatosis	-0.042	0.492
Inflammation	0.498	<0.001
Ballooning	0.274	0.051
Fibrosis	0.365	<0.001

Numbers represent the mean  $\pm$  SD. Abbreviations: AST, aspartate aminotransferase; ALT, alanine aminotransferase; HOMA-IR, homeostasis model for the assessment of insulin resistance; NAS, NAFLD activity score. The correlation between serum sCD14 levels and other parameters is examined by Spearman correlations coefficient.

doi:10.1371/journal.pone.0065211.t002

inflammation in patients with NAFLD. A previous report showed that serum sCD14 levels in patients with NASH increased with increasing fibrosis stage; however, that report did not evaluate liver inflammation [33]. By contrast, we showed that serum sCD14 levels are strongly correlated with the grade of liver inflammation but not the stage of liver fibrosis. The serum sCD14 levels were also positively correlated with hepatic CD14 expression levels in patients with NAFLD. These results suggest that increased serum sCD14 levels reflect liver inflammation in NAFLD patients. Similarly, previous report showed that circulating microparticles from CD14 positive cells were correlated with severity of liver

**Table 4.** Multiple logistic regression analysis of factors associated with grade 2–3 liver inflammation compared to grade 0–1 liver inflammation in NAFLD patients.

Factor	Odds ratio	95% CI	P value
Age (years)	1.071	0.992–1.149	0.0729
Gender	1.976	0.241–17.49	0.5287
Body mass index (kg/m <sup>2</sup> )	1.110	0.881–1.329	0.3987
ALT (IU/l)	0.995	0.938–1.029	0.2756
C-reactive protein (mg/l)	1.395	0.827–2.339	0.2131
sCD14 (ng/dl)	8.853	1.221–63.08	0.0116*

Abbreviations: ALT, alanine aminotransferase; sCD14, soluble CD14.  
doi:10.1371/journal.pone.0065211.t004

inflammation in patients with NAFLD [34]. However, we believe that sCD14 is a very convenient tool for evaluation of liver inflammation grade when compared with microparticles.

Several limitations of our study should be discussed. First, we did not conduct liver biopsies in the healthy control group for ethical reasons. Second, some patient selection bias may exist because liver biopsy may have been reserved for patients with NAFLD who were deemed likely to have NASH. Third, using liver biopsy as the 'gold standard' for assessing the accuracy of sCD14 has important limitations associated with sampling errors, as well as intra- and inter-observer variability, which are at least partly linked to the biopsy size [32]. Finally, serum sCD14 levels may increase in other conditions such as cholestasis, biliary atresia, and ischemia reperfusion injury [35–36]. However, these are extremely unusual conditions.

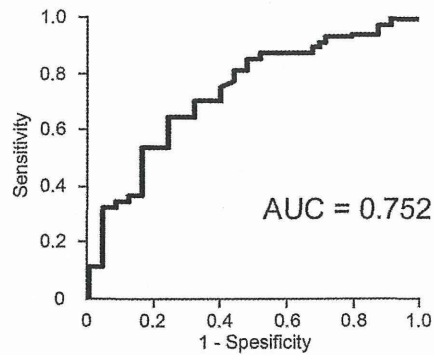
In conclusion, we confirmed that serum sCD14 may be a useful and non-invasive biomarker for diagnosis of NASH and assessing liver inflammation in patients with NAFLD, who are at high risk of progressing to advanced liver fibrosis. Further research, including larger-scale clinical studies or combination of serum sCD14 and other non-invasive biomarkers of NASH such as CK18, are

**Table 3.** Clinical and serological characteristics of NAFLD patients with mild and severe liver inflammation.

	Grade 0–1 liver inflammation	Grade 2–3 liver inflammation	P value*
Number (n)	43	70	
Age (years)	47.2 $\pm$ 13.2	52.3 $\pm$ 12.9	0.046
Gender (male; female)	23;20	43;27	0.037
Body mass index (kg/m <sup>2</sup> )	27.9 $\pm$ 5.3	29.9 $\pm$ 5.9	0.042
Visceral fat area (cm <sup>2</sup> )	140.7 $\pm$ 35.1	149.8 $\pm$ 46.2	0.051
Subcutaneous fat area (cm <sup>2</sup> )	199.5 $\pm$ 44.9	191.9 $\pm$ 48.1	0.226
Fasting Blood Sugar (mg/dl)	105.2 $\pm$ 13.1	110.2 $\pm$ 13.4	0.251
AST (IU/l)	42.3 $\pm$ 14.1	43.2 $\pm$ 14.3	0.430
ALT (IU/l)	45.5 $\pm$ 12.9	57.1 $\pm$ 17.6	0.048
C-reactive protein (mg/l)	0.73 $\pm$ 0.46	1.18 $\pm$ 0.98	0.043
HOMA-IR	3.43 $\pm$ 1.33	3.59 $\pm$ 1.31	0.431
sCD14 (ng/dl)	25.7 $\pm$ 10.5	31.2 $\pm$ 11.6	0.009

Numbers represent the mean  $\pm$  SD. Abbreviations: AST, aspartate aminotransferase; ALT, alanine aminotransferase; HOMA-IR, homeostasis model for the assessment of insulin resistance. P values correspond to the comparison between grade 0–1 liver inflammation and grade 2–3 liver inflammation in NAFLD patients using the Student's t-test for continuous factors.

doi:10.1371/journal.pone.0065211.t003



Inflammation grade	Cut off value	Se (%)	Sp (%)	PPV (%)	NPV (%)
Grade $\geq 2$	29.5 (ng/dl)	78.2	72.4	79.6	62.9

**Figure 2. Serum sCD14 levels for diagnosis of the grade of liver inflammation.** Receiver operating characteristic (ROC) curve and area under the ROC curve (AUROC) for discriminating between patients with severe (grade 2–3) or mild (grade 0–1) liver inflammation using serum sCD14 levels in 113 patients are shown. Serum sCD14 levels can diagnose severe liver inflammation in patients with NAFLD with moderate accuracy.

doi:10.1371/journal.pone.0065211.g002

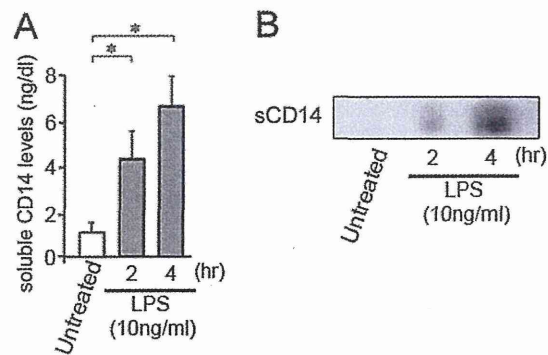
needed to fully investigate the diagnostic and therapeutic implications of our findings.

## Acknowledgments

The skillful technical assistance of Machiko Hiraga and Tamiyo Taniguchi is gratefully acknowledged. All authors read and approved the final manuscript.

## References

- Angulo P (2002) Nonalcoholic fatty liver disease. *N Engl J Med* 18: 1221–1231.
- Farrell GC (2003) Non-alcoholic steatohepatitis: what is it, and why is it important in the Asia-Pacific region? *J Gastroenterol Hepatol* 18: 124–138.
- Hamaguchi M, Kojima T, Takeda N, Nagata C, Takeda J, et al. (2005) The metabolic syndrome as a predictor of nonalcoholic fatty liver disease. *Ann Intern Med* 143: 722–728.
- Day CP (2002) Non-alcoholic steatohepatitis (NASH): where are we now and where are we going? *Gut* 50: 585–588.
- Fan JG, Li F, Cai XB, Peng YD, Ao QH, et al. (2007) Effects of nonalcoholic fatty liver disease on the development of metabolic disorders. *Gastroenterol Hepatol* 22: 1086–1091.
- Day CP, Saksena S (2002) Non-alcoholic steatohepatitis: definitions and pathogenesis. *J Gastroenterol Hepatol* 17: 377–384.
- Harrison SA, Torgerson S, Hayashi PH (2003) The natural history of nonalcoholic fatty liver disease: a clinical histopathological study. *Am J Gastroenterol* 98: 2042–2047.
- Powell EE, Cooksley WG, Hanson R, Searle J, Powell LW (1990) The natural history of nonalcoholic steatohepatitis: a follow-up study of forty-two patients for up to 21 years. *Hepatology* 11: 74–80.
- Wellen KE, Hotamisligil GS (2005) Inflammation, stress, and diabetes. *J Clin Invest* 115: 1111–1119.
- Xu H, Barnes GT, Yang Q, Tan G, Yang D, et al. (2003) Chronic inflammation in fat plays a crucial role in the development of obesity-related insulin resistance. *J Clin Invest* 112: 1821–1830.
- Chitturi S, Farrell GC (2001) Etiopathogenesis of nonalcoholic steatohepatitis. *Semin Liver Dis* 21: 27–41.
- Kugelmas M, Hill DB, Vivian B, Marsano L, McClain CJ (2003) Cytokines and NASH: a pilot study of the effects of lifestyle modification and vitamin E. *Hepatology* 38: 413–419.
- Hui JM, Hodge A, Farrell GC, Kench JG, Kriketos A, et al. (2004) Beyond insulin resistance in NASH: TNF- $\alpha$  or adiponectin? *Hepatology* 40: 46–54.
- Cadranel JF (2002) Good clinical practice guidelines for fine needle aspiration biopsy of the liver: past, present and future. *Gastroenterol Clin Biol* 26: 823–824.
- Imajo K, Fujita K, Yoneda M, Nozaki Y, Ogawa Y, et al. (2012) Hyperresponsivity to low-dose endotoxin during progression to nonalcoholic steatohepatitis is regulated by leptin-mediated signaling. *Cell Metabolism* 16: 44–54.
- Wright SD, Ramos RA, Tobias PS, Ulevitch RJ, Mathison JC (1990) CD14, a receptor for complexes of lipopolysaccharide (LPS) and LPS binding protein. *Science* 249: 1431–1433.
- Pugin J, Heumann ID, Tomasz A, Kravchenko VV, Akamatsu Y, et al. (1994) CD14 is a pattern recognition receptor. *Immunity* 1: 509–516.
- Bazil V, Strominger JL (1991) Shedding as a mechanism of down-modulation of CD14 on stimulated human monocytes. *J Immunol* 147: 1567–1574.
- Matthews DR, Hosker JP, Rudenski AS, Naylor BA, Treacher DF, et al. (1985) Homeostasis model assessment: insulin resistance and beta-cell function from fasting plasma glucose and insulin concentrations in man. *Diabetologia* 28: 412–419.
- Yoshizumi T, Nakamura T, Yamane M, Islam AH, Menju M, et al. (1999) Abdominal fat: Standardized technique for measurement at CT. *Radiology* 211: 283–286.
- Sanyal AJ, Brunt EM, Kleiner DE, Kowdley KV, Chalasani N, et al. (2011) Endpoints and Clinical Trial Design for Nonalcoholic Steatohepatitis. *Hepatology* 54: 344–353.
- Brunt EM (2001) Nonalcoholic steatohepatitis: definition and pathology. *Semin Liver Dis* 21: 3–16.
- Kleiner DE, Brunt EM, Van Natta M, Behling C, Contos MJ, et al. (2005) Design and validation of a histological scoring system for nonalcoholic fatty liver disease. *Hepatology* 41: 1313–1321.
- Hui JM, Kench JG, Chitturi S, Sud A, Farrell GC, et al. (2003) Long-term outcomes of cirrhosis in nonalcoholic steatohepatitis compared with hepatitis C. *Hepatology* 38: 420–427.
- Sanyal AJ (2002) Treatment of non-alcoholic fatty liver disease. *J Gastroenterol Hepatol* 17: 385–388.
- Sanyal AJ (2002) AGA technical review on nonalcoholic fatty liver disease. *Gastroenterology* 123: 1705–1725.
- Bedossa P, Dargere D, Paradis V (2003) Sampling variability of liver fibrosis in chronic hepatitis C. *Hepatology* 38: 1449–1457.
- Maharaj B, Maharaj RJ, Leary WP, Cooppan RM, Naran AD, et al. (1986) Sampling variability and its influence on the diagnostic yield of percutaneous needle biopsy of the liver. *Lancet* 1: 523–525.
- Regev A, Berho M, Jeffers LJ, Milikowski C, Molina EG, et al. (2002) Sampling error and intraobserver variation in liver biopsy in patients with chronic HCV infection. *Am J Gastroenterol* 97: 2614–2618.



**Figure 3. Lipopolysaccharide (LPS) increases sCD14 in vitro.** sCD14 in cell culture medium from sham- and LPS-treated RAW264.7 cells was compared by (A) Western immunoblot analysis and (B) a sandwich enzyme-linked immunosorbent assay. LPS increased sCD14 in cell culture medium from RAW 264.7 cells. The immunoblot is representative of three independent experiments. Results are presented as means  $\pm$  SD. Statistical significance was determined using ANOVA with Scheffe's multiple testing correction (\* $p$  value  $< 0.05$ ). doi:10.1371/journal.pone.0065211.g003

## Author Contributions

Conceived and designed the experiments: AN YO KI MY. Performed the experiments: YO KI. Analyzed the data: YO KI TK WT YS SK HM SM YN KF HK. Contributed reagents/materials/analysis tools: KW SS. Wrote the paper: AN YO KI MY.



30. Soloway RD, Baggenstoss AH, Schoenfield LJ, Summerskill WH (1971) Observer error and sampling variability tested in evaluation of hepatitis and cirrhosis by liver biopsy. *Am J Dig* 16: 1082–1086.
31. Abdi W, Millan JC, Mezey E (1979) Sampling variability on percutaneous liver biopsy. *Arch Intern Med* 139: 667–669.
32. Ratziu V, Charlotte F, Heurtier A, Gombert S, Giral P, et al. (2005) Sampling variability of liver biopsy in nonalcoholic fatty liver disease. *Gastroenterology* 128: 1898–1906.
33. Harte AL, da Silva NF, Creely SJ, McGee KC, Billyard T, et al. (2010) Elevated endotoxin levels in non-alcoholic fatty liver disease. *J Inflamm (Lond)* 7: 15.
34. Kornek M, Lynch M, Mehta SH, Lai M, Exley M, et al. (2012) Circulating microparticles as disease-specific biomarkers of severity of inflammation in patients with hepatitis C or nonalcoholic steatohepatitis. *Gastroenterology* 143: 448–458.
35. Luan X, Liu Y, Li M (2012) The role of CD14 and Toll-like receptor 4 of Kupffer cells in hepatic ischemia-reperfusion injury in rats. *Transplant Proc* 44: 937–941.
36. Chou MH, Chuang JH, Eng HL, Tsai PC, Hsieh CS, et al. (2012) Effects of Hepatocyte CD14 Upregulation during Cholestasis on Endotoxin Sensitivity. *PLoS One* 7: e34903.

CASE REPORT

Open Access

# Improvement of pneumatosis cystoides intestinalis after steroid tapering in a patient with bronchial asthma: a case report

Akiko Ezuka<sup>1</sup>, Kenichi Kawana<sup>1</sup>, Hajime Nagase<sup>1</sup>, Hirokazu Takahashi<sup>2\*</sup> and Atsushi Nakajima<sup>2</sup>

## Abstract

**Introduction:** We report the case of a patient who was diagnosed as having pneumatosis cystoides intestinalis while being treated with prednisolone for bronchial asthma. Even before we had experienced a case of this, the relationship between pneumatosis cystoides intestinalis and prednisolone was unclear. In this case, pneumatosis cystoides intestinalis was improved with the reduction of prednisolone, and therefore we thought a direct relationship between pneumatosis cystoides intestinalis and prednisolone might become clear, such as whether it is dose dependent.

**Case presentation:** A 62-year-old Japanese woman had been treated for bronchial asthma for approximately 40 years. She presented with abdominal distension, and a radiographic examination showed intraperitoneal free gas and intramural gas, suggestive of pneumatosis cystoides intestinalis. However, when her prednisolone dose was decreased from 30mg to 0mg for approximately a year because of improvement in her asthma symptoms, her abdominal symptom resolved, and the frequency of her bowel movements returned to normal.

**Conclusion:** Amelioration of pneumatosis cystoides intestinalis was observed with tapering of the prednisolone, suggesting that prednisolone may have been involved in the pathogenesis of pneumatosis cystoides intestinalis in this patient.

**Keywords:** Asthma, Pneumatosis cystoides intestinalis, Prednisolone

## Introduction

Pneumatosis cystoides intestinalis (PCI) is a rare condition in which multiple pneumato cysts develop in the submucosa or subserosa of the colon. PCI was first reported in anatomic dissection by DuVernoi in 1730, and Meyer was the first to use the term in 1925 [1,2]. PCI is characterized by multiple gas-filled cysts in the wall of the large intestine [1], and is an unexpected radiologic finding in many cases [1]. Abdominal pain is the most frequent complaint. We encountered a case of PCI apparently induced by a steroid used for asthma treatment, which resolved with tapering of the steroid.

## Case presentation

A 62-year-old Japanese woman was observed for approximately half a year because of upper abdominal pain,

however, an upper gastrointestinal endoscopy, fluoroscopic examination and abdominal computed tomography (CT) revealed no abnormal findings. Thereafter, the patient's symptom settled. Four years later, she visited our hospital because of a feeling of fullness in the abdomen and increase in the frequency of bowel movements. An abdominal CT revealed extensive appearance of intramural gas in the colon (Figure 1), particularly in the ascending portion. No abnormality was noted on the surface of the intestinal wall by colonoscopy, except for soft polypoid lesions (Figures 2 and 3). The soft polypoid lesions were 6mm in diameter, on average, with a maximum diameter of 33mm. Pathological examination revealed a cluster of pneumatic cysts in the submucosa and subserosa of the colon, based on which the diagnosis of PCI was made (Figure 4). There was no evidence of inflammation, despite her abdominal symptoms and laboratory findings, including elevated serum C-reactive protein levels and leukocytosis. She has had hypertension, hyperlipidemia, and asthma for decades. She was taking the following routine daily medications:

\* Correspondence: hirokazu@med.yokohama-cu.ac.jp

<sup>2</sup>Gastroenterology Division, Yokohama City University Graduate School of Medicine, 3-9 Fuku-ura Kanazawaku, Yokohama 236-0004, Japan  
Full list of author information is available at the end of the article