

## OPEN

Ribophorin II regulates breast tumor initiation and metastasis through the functional suppression of GSK3 $\beta$ Ryou-u Takahashi<sup>1</sup>, Fumitaka Takeshita<sup>1</sup>, Kimi Honma<sup>1</sup>, Masaya Ono<sup>2</sup>, Kikuya Kato<sup>3</sup> & Takahiro Ochiya<sup>1</sup><sup>1</sup>Division of Molecular and Cellular Medicine, <sup>2</sup>Division of Chemotherapy and Clinical Research, National Cancer Center Research Institute, 1-1, Tsukiji 5-chome, Chuo-ku, Tokyo 104-0045, Japan, <sup>3</sup>Research Institute, Osaka Medical Center for Cancer and Cardiovascular Diseases, 1-3-2 Nakamichi, Higashinari-ku, Osaka 537-8511, Japan.SUBJECT AREAS:  
CANCER THERAPEUTIC  
RESISTANCE  
BREAST CANCER  
CANCER STEM CELLS  
MECHANISMS OF DISEASEReceived  
15 March 2013Accepted  
5 August 2013Published  
20 August 2013Correspondence and  
requests for materials  
should be addressed to  
T.O. (tochiya@ncc.go.  
jp)

**Mutant p53 (mtp53) gain of function (GOF) contributes to various aspects of tumor progression including cancer stem cell (CSC) property acquisition. A key factor of GOF is stabilization and accumulation of mtp53. However, the precise molecular mechanism of the mtp53 oncogenic activity remains unclear. Here, we show that ribophorin II (RPN2) regulates CSC properties through the stabilization of mtp53 (R280K and del126-133) in breast cancer. RPN2 stabilized mtp53 by inactivation of glycogen synthase kinase-3 $\beta$  (GSK3 $\beta$ ) which suppresses Snail, a master regulator of epithelial to mesenchymal transition. RPN2 knockdown promoted GSK3 $\beta$ -mediated suppression of heat shock proteins that are essential for mtp53 stabilization. Furthermore, our study reveals that high expression of RPN2 and concomitant accumulation of mtp53 were associated with cancer tissues in a small cohort of metastatic breast cancer patients. These findings elucidate a molecular mechanism for mtp53 stabilization and suggest that RPN2 could be a promising target for anti-CSC therapy.**

Recent studies show that some p53 mutations result in the loss of tumor-suppressing function (LOF) by the mutant allele and *trans*-dominant inactivation of the remaining wtp53<sup>1</sup>. Importantly, the mutant p53 (mtp53) contributes to tumor progression. This mechanism is referred to as mtp53 gain of function (GOF). A key property of GOF is the stabilization and accumulation of mtp53<sup>2</sup>. The mtp53 protein is rescued from degradation and contributes to malignant phenotypes such as invasion and metastasis or genomic instability by binding and inactivating p63 and Mre11, respectively<sup>3-5</sup>. In contrast to wild-type p53 (wtp53), the mtp53 protein adopts an aberrant conformation. Mtp53 forms stable complexes with heat shock proteins HSP90 and HSP70, MDM2, and the carboxyl terminus of HSP70-interacting protein (CHIP), which prevent mtp53 misfolding and aggregation<sup>6,7</sup>. In malignant cancer cells, the HSP90 and HSP70 chaperone machinery is upregulated and activated to protect mutated and overexpressed oncoproteins from degradation<sup>8,9</sup>. While several studies succeeded in identifying the molecular mechanisms that regulate mtp53 stability<sup>6,7</sup> and the small molecules that induce mtp53 destabilization<sup>6,10</sup>, the mechanism that leads to mtp53 stabilization is not yet fully understood.

In breast cancer, p53 LOF or mutation induces epithelial to mesenchymal transition (EMT)<sup>11</sup>, which contributes to cancer progression and metastasis<sup>12,13</sup>. Several studies show a link between EMT and the acquisition of CSC properties<sup>11,14</sup>. Ectopic expression of EMT regulators, such as Twist and Snail, or shRNA-mediated knockdown of E-cadherin confer cancer stem cell (CSC) properties to mammary epithelial cells<sup>12</sup>. Snail expression is suppressed by glycogen synthase kinase-3 $\beta$  (GSK3 $\beta$ ) at transcriptional and post-transcriptional levels<sup>15,16</sup>, and the inhibition of GSK3 $\beta$  by small molecules induces EMT and promotes CSC phenotypes in breast cancer<sup>17</sup>. Despite the critical role of GSK3 $\beta$  in the regulation of CSCs phenotypes, the physiological and molecular mechanisms underlying its function remain unclear.

Breast CSCs exhibit a CD44<sup>+</sup>CD24<sup>-low</sup> antigenic phenotype with low expression of epithelial markers such as E-cadherin, and are characterized by high tumorigenicity and drug resistance<sup>14,18</sup>. Previously, we showed that ribophorin II (RPN2) is a novel regulator of drug resistance in breast cancer and affects docetaxel resistance by modulating the *N*-linked glycosylation of P-glycoprotein (ABCB1)<sup>19</sup>. To gain further insight into the regulation of mtp53 stability in CSCs, we screened for possible interactions between RPN2 and GSK3 $\beta$ . The present study suggests that the stabilization of mtp53 (R280K and del126-133) in breast cancer depends on RPN2 inhibition of GSK3 $\beta$ -mediated inactivation of HSP70 and HSP90 that are essential factors for the stabilization and oncogenic activities of mtp53.



## Results

**RPN2 is highly expressed in the CSC fraction.** RPN2 was initially considered essential for the maintenance of CSCs because CSCs exhibit resistance to conventional chemotherapy<sup>18,20</sup>. To test this hypothesis, the expression of RPN2 in the CSC fraction was examined using two breast cancer cell lines, MCF7-ADR drug resistant human breast cancer cells and MDA-MB-231-D3H2-LN highly metastatic human breast cancer cells (MM231-LN). Since CSC fraction in breast cancer cells is reported to show the resistance to chemotherapy and the metastatic ability<sup>21,22</sup>, we selected these two cell lines. Flow cytometry analysis showed that MCF7-ADR and MM231-LN cells comprise approximately 15% and 50% of CSCs, respectively (Fig. 1a). In breast CSCs, the CD44<sup>high</sup>/CD24<sup>low</sup> fraction shows higher tumorigenicity than the CD44<sup>high</sup>/CD24<sup>high</sup> fraction<sup>23</sup>. Flow cytometry and quantitative reverse transcription PCR (qRT-PCR) of MCF7-ADR and MM231-LN cells showed that RPN2 was more highly expressed in the CSC fraction than in the non-CSC fraction (Fig. 1b). In addition, the CSC fraction of MM231-LN showed high tumorigenicity in an animal model (Suppl. Fig. S1). Immunostaining analysis showed inverse correlation between RPN2 and E-cadherin expression in MM231-LN xenograft tumors (Fig. 1c).

To further investigate the role of RPN2 in CSCs, RPN2 knockdown experiments were performed in the two breast cancer cell lines, MCF7-ADR and MM231-LN, using lentivirus vectors expressing GFP and a small hairpin RNA against RPN2 (shRPN2-site2) (Suppl. Fig. S2A and S2B). RPN2 knockdown reduced the E-cadherin negative fraction in MM231-LN cells as detected by flow cytometry analysis (Suppl. Fig. S3A). We also found that RPN2 knockdown induced Snail suppression in MM231-LN cells (Fig. 1d). Compared with MM231-LN shNC, a 40% decrease in *Snail* expression was observed in MM231-LN shRPN2 (Fig. 1d). Moreover, the GSK3 $\beta$  inhibitor CH99021 caused *Snail* upregulation in MM231-LN shRPN2 (Fig. 1d).

Consistent with the previous studies showing loss of epithelial phenotype by inactivation of p53<sup>11,14</sup>, we confirmed that the ectopic expression of Snail and a point mutant p53 (R280K) in human mammary epithelial cells (HME cells) promoted the expression of Vimentin which is one of the mesenchymal cell markers (Fig. 2a, lane 3). Co-expression of Snail and C-terminal Myc-Flag tagged RPN2 (RPN2-MF) also promoted the expression of Vimentin in HME cells (Fig. 2a, lane 4). Next we established HME-Snail cell line that shows predominant mesenchymal phenotype and contains the CD44<sup>high</sup>/CD24<sup>low</sup> fraction<sup>11</sup> (Fig. 2b and 2d). Flow cytometry and western blot analysis revealed that while the expression of wtp53 suppressed Snail expression and reduced CSC fraction in HME-Snail cells, the expression of mtp53 or RPN2-MF did not alter the population of CSCs and Snail expression (Fig. 2b and 2d). More importantly, we also found that mtp53 (R280K) promoted the expression of RPN2 in HME-Snail cells (Fig. 2b lane 4). We also observed that mtp53 (R280K and R175H) promoted the protein stability of Snail and co-expression of RPN2-MF and mtp53 (R280K) induced the expression of N-cadherin in other human mammary epithelial cells (MCF10A cells) (Fig. 2c and Suppl. Fig. S3A). These results suggest that RPN2 plays an important role in the generation of CSC with EMT phenotype in breast cancer cells.

**RPN2 regulates the tumorigenicity and metastasis of CSCs.** The tumorigenicity of RPN2 knockdown cell lines was then examined using a 3D spheroid culture system<sup>24</sup>. In several cancer cell lines, CSCs form spheroids, which are essential for tumor onset in immunodeficient mice<sup>14,24</sup>. MM231-LN CSCs exhibited high tumorigenicity in an animal model (Suppl. Fig. S1). Compared with the control CSC fraction (MM231-LN shNC), the RPN2-knockdown CSC fraction (MM231-LN shRPN2) formed very few spheroids (Fig. 3a and b). To evaluate tumor formation by *in vivo* imaging, a

limiting-dilution assay was performed using 6-week-old NOD/SCID mice that had been injected in the hind legs with 10<sup>2</sup> cells from a CSC fraction (CD44<sup>high</sup>/CD24<sup>low</sup>/GFP<sup>high</sup>) derived from MM231-LN cells expressing firefly luciferase (Fig. 3c). The control CSC fraction formed tumors in all mice, whereas the RPN2-knockdown CSC fraction only formed one tumor from five injections (Fig. 3c and Suppl. Fig. S4A), and in that tumor, low RPN2 knockdown was confirmed by *in vivo* imaging (Suppl. Fig. S4B). Similar results were obtained with MCF7-ADR cells (Fig. 3c). The metastatic ability of RPN2 knockdown cell lines was examined next. In transwell migration assays, RPN2 knockdown reduced the invasiveness of CSCs in MM231-LN cells (Fig. 3d and e). After the retransplantation of CSCs derived from MM231-LN shNC into the mammary fat pads of NOD/SCID mice, nodal and lung metastasis was observed in all mice (Fig. 3f). However, after transplantation of CSCs derived from MM231-LN shRPN2, nodal and lung metastasis was no longer observed (Fig. 3f and g), suggesting that RPN2 is essential for tumor formation and metastasis.

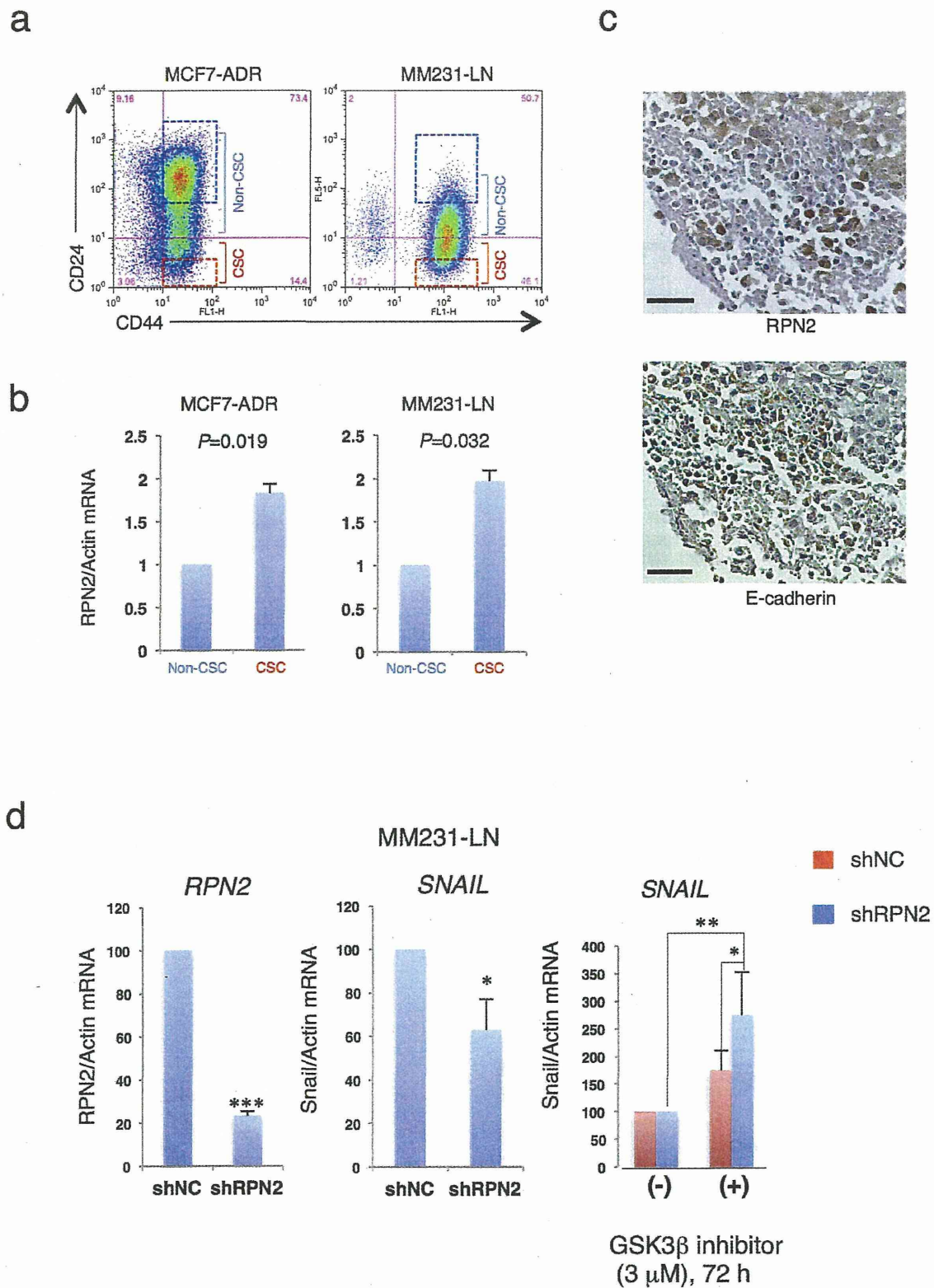
### RPN2 antagonizes GSK3 $\beta$ function via physical interaction.

Several studies show that GSK3 $\beta$  suppresses Snail expression at transcriptional and post-transcriptional levels<sup>15,16</sup>, and the inhibition of GSK3 $\beta$  by small molecules induces EMT and promotes CSC phenotypes in breast cancer<sup>17</sup>. Our results also confirmed that the GSK3 $\beta$  inhibitor CH99021 suppressed E-cadherin expression in MCF7 cells (Suppl. Fig. S3B). In the present study, RPN2 knockdown reduced the E-cadherin negative fraction in MM231-LN cells via suppressing *Snail* expression (Fig. 1d and Suppl. Fig. S3C). These results indicate that RPN2 knockdown promotes GSK3 $\beta$  activation, and such activation is associated with the suppression of CSC phenotypes (Fig. 1 and 3).

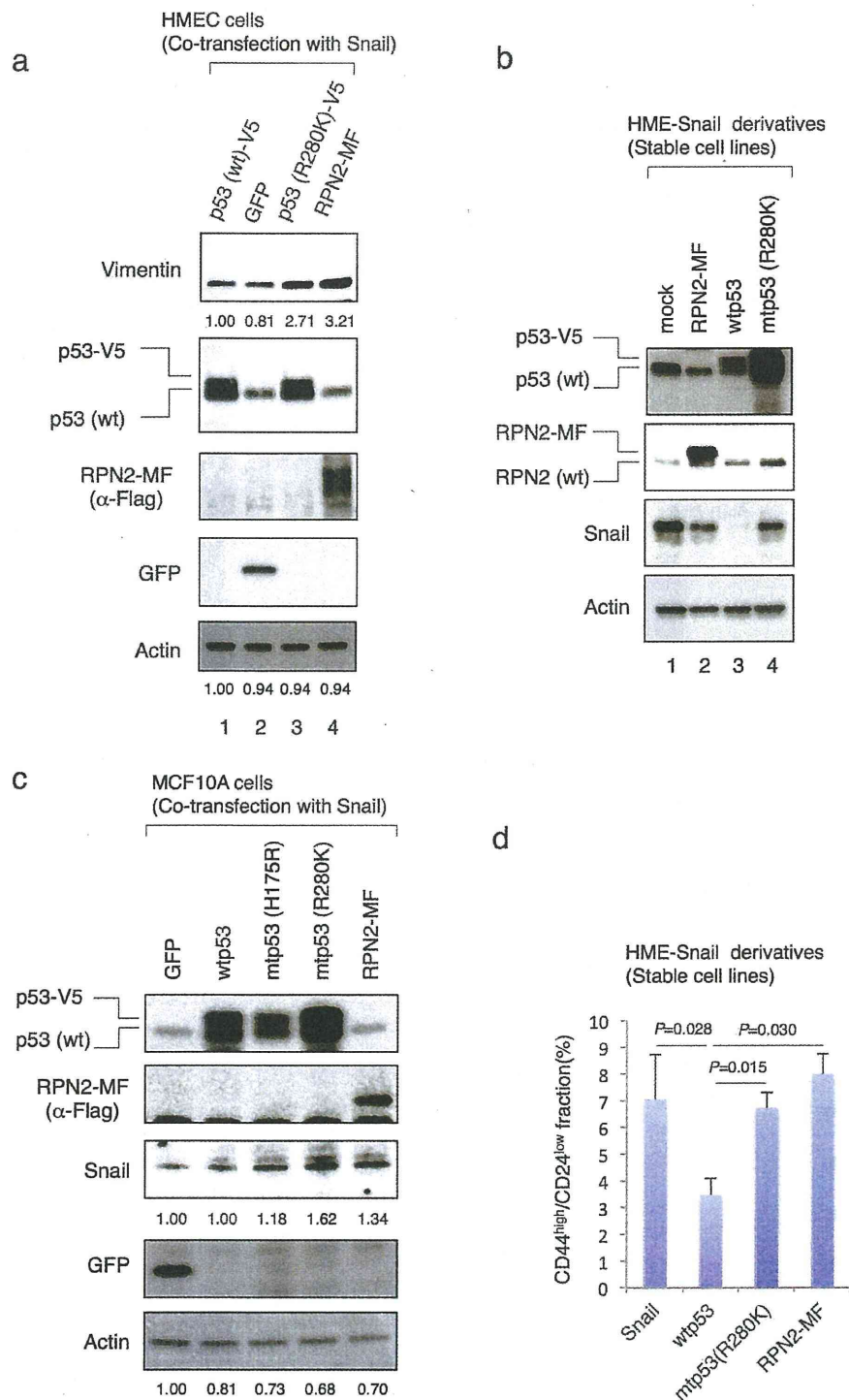
The results above indicate that RPN2 regulates GSK3 $\beta$  activity in MM231-LN cells (Fig. 1c and d and Suppl. Fig. S3C); however, the N-linked glycosylation of GSK3 $\beta$  has not been previously observed. We therefore examined the physical interaction between RPN2 and GSK3 $\beta$  in MM231-LN cells by immunoprecipitation of endogenous RPN2 from MM231-LN cells. Since the phosphorylation of GSK3 $\beta$  at Tyr216 (GSK3 $\beta$ -216Y) is essential for the nuclear localization and activation of GSK3 $\beta$ <sup>16</sup>, we examined the association of RPN2 with both Y<sup>216</sup>-phosphorylated and unphosphorylated GSK3 $\beta$  (Fig. 4a). Immunoprecipitation analysis showed that RPN2 associated with both Y<sup>216</sup>-phosphorylated and unphosphorylated GSK3 $\beta$  (Fig. 4a, lane 2). The physical interaction between RPN2 and GSK3 $\beta$  was also confirmed by using an anti-GSK3 $\beta$  antibody (Fig. 4b1, lane 2).

To determine the binding site of GSK3 $\beta$  on RPN2, *in vitro* binding assays were performed using extracts from 293T cells expressing RPN2-MF and C-terminal HA-tagged GSK3 $\beta$  (GSK3 $\beta$ -HA). Co-immunoprecipitation analysis revealed that GSK3 $\beta$  interacted with RPN2 in this extract (Fig. 4c and d, lane 2). Next, the binding region for GSK3 $\beta$  to RPN2 was examined using 293T cell extracts expressing RPN2-MF and GSK3 $\beta$  deletion mutants (Fig. 4e). Co-immunoprecipitation analysis revealed that the N-terminal amino acid region between 56–85 of GSK3 $\beta$  was critical for RPN2 binding (Fig. 4f, lane3).

To further investigate whether RPN2 antagonizes GSK3 $\beta$  activity via physical interaction, we examined the E-cadherin expression in 293T cells. In a control experiment, we confirmed that ectopic expression of N-terminal Flag-tagged Snail (Flag-Snail) induced E-cadherin suppression (Fig. 4g) and that expression of GSK3 $\beta$ -HA inhibited the Snail-mediated suppression of E-cadherin (Fig. 4g). Therefore, we examined whether ectopic expression of RPN2-MF with GSK3 $\beta$ -HA restores the Snail activity. Flow cytometry analysis showed that the expression of RPN2-MF restored the Snail-mediated suppression of E-cadherin (Fig. 4g). These results indicate that RPN2 inhibits the nuclear localization and activation of GSK3 $\beta$  via a physical interaction with its N-terminal region, and partially provide a



**Figure 1** | RPN2 is essential for the maintenance of the CSC fraction. (a) The CSC fraction derived from MCF7-ADR and MM231-LN cells. (b) MCF7-ADR and MM231-LN cells were segregated by fluorescence-activated cell sorting (FACS) into CD44<sup>high</sup>/CD24<sup>low</sup> and CD44<sup>high</sup>/CD24<sup>high</sup> subsets; sorted subsets were then compared for RPN2 expression by quantitative real-time PCR (qRT-PCR). Each data point is the average of three experiments. (c) Immunohistochemistry (IHC) for RPN2 (Top panel) and E-cadherin (Bottom panel) in MM231-LN tumors. MM231-LN xenografts were grown for 5–6 weeks after fat pad injection. Sections are representative of at least four mice analyzed per group. Scale bar, 200  $\mu$ m. (d) RPN2 knockdown suppressed *Snail* expression via GSK3 $\beta$  activation. In MM231-LN cells, RPN2 and *Snail* mRNA expression was monitored by qRT-PCR after 72 h of treatment with a GSK3 $\beta$  inhibitor (CHIR99021, 3  $\mu$ M). (n = 3, \* $P$  < 0.05, \*\* $P$  < 0.01, \*\*\* $P$  < 0.001).

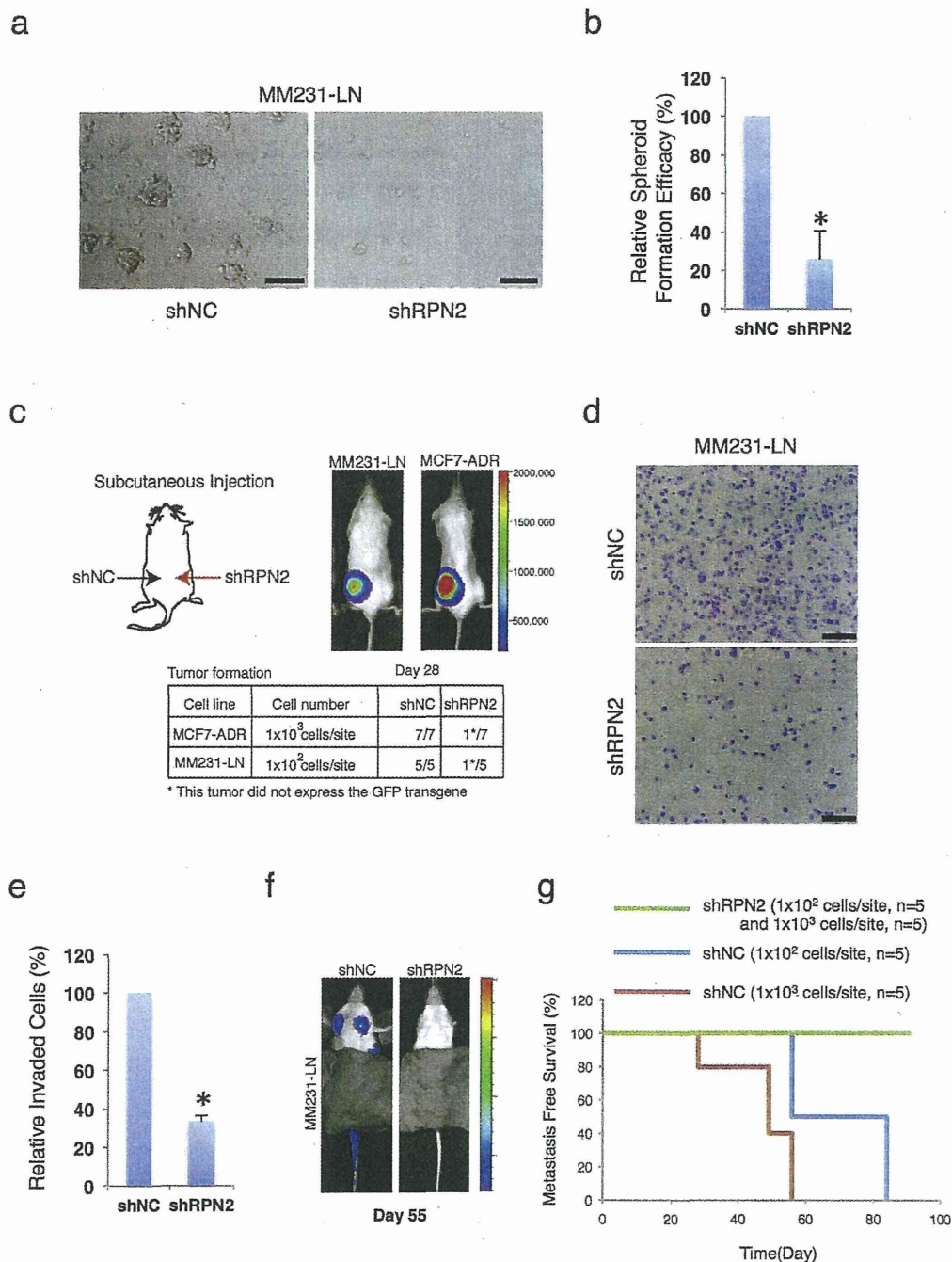


**Figure 2** | RPN2 plays the important roles in the generation of CSC fraction in breast cancer cells. (a)–(c) Western blot analysis. Cell lysates were subjected to western blotting with anti-p53, anti-RPN2, anti-Snail, anti-Vimentin, anti-Flag, anti-GFP and anti-actin antibodies. (d) p53 status and RPN2 affected the population of CSCs in breast cancer cells. Flow cytometric analysis of CD44 and CD24 expression in HME-Snail cell line and its derivatives. Full-length gels and blots are shown in supplementary figure 10–12.

molecular mechanism by which E-cadherin negative fraction acquires drug resistance.

**RPN2 knockdown promoted GSK3 $\beta$ -mediated inactivation of heat shock proteins.** Recent studies show that different types of

mtp53 form stable complexes with MDM2, CHIP, HSP90 and HSP70<sup>25–27</sup> and that HSP70 is transcriptionally regulated by heat shock transcription factor1 (HSF1)<sup>28,29</sup>. HSF1 transcriptional activity is negatively regulated by GSK3 $\beta$ <sup>30</sup>, which suggests that RPN2 knockdown may promote GSK3 $\beta$ -induced downregulation of HSP70

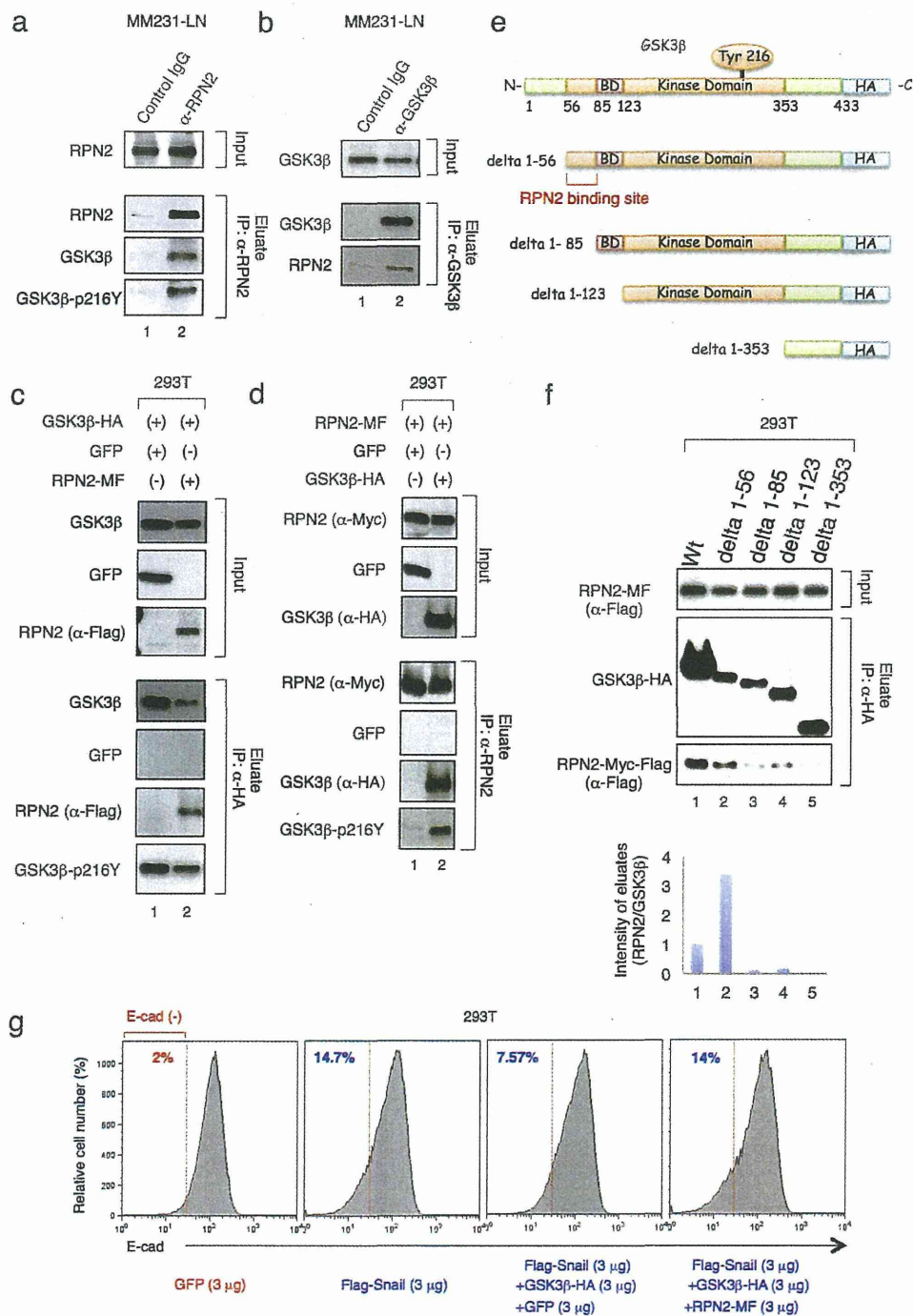


**Figure 3** | RPN2 regulates the tumorigenicity and metastatic activity of CSCs. (a) Phase-contrast images of spheroids seeded by MM231-LN shNC (right) and MM231-LN shRPN2 (left) cells. Scale bar, 50  $\mu$ m. (b) Quantification of spheroid formation in MM231-LN shNC and MM231-LN shRPN2 cells. The data in (b) represent three independent experiments, and values are means  $\pm$  s.d. ( $n = 3$ ,  $*P < 0.05$ ). (c) CSC ( $CD44^{\text{high}}/CD24^{\text{low}}/GFP^{\text{high}}$ ) tumor formation in MM231-LN shNC (left) and MM231-LN shRPN2 (right) cells after subcutaneous injection. (d) and (e) Matrix invasion in MM231-LN shNC and MM231-LN shRPN2 cells (error bars = s.d.,  $n = 3$ ,  $*P < 0.05$ ). (f) and (g) CSC ( $CD44^{\text{high}}/CD24^{\text{low}}/GFP^{\text{high}}$ ) tumor metastasis in MM231-LN shNC and MM231-LN shRPN2 cells after mammary fat pad injection and monitoring of survival (shNC,  $n = 5$ ; shRPN2,  $n = 5$ ).

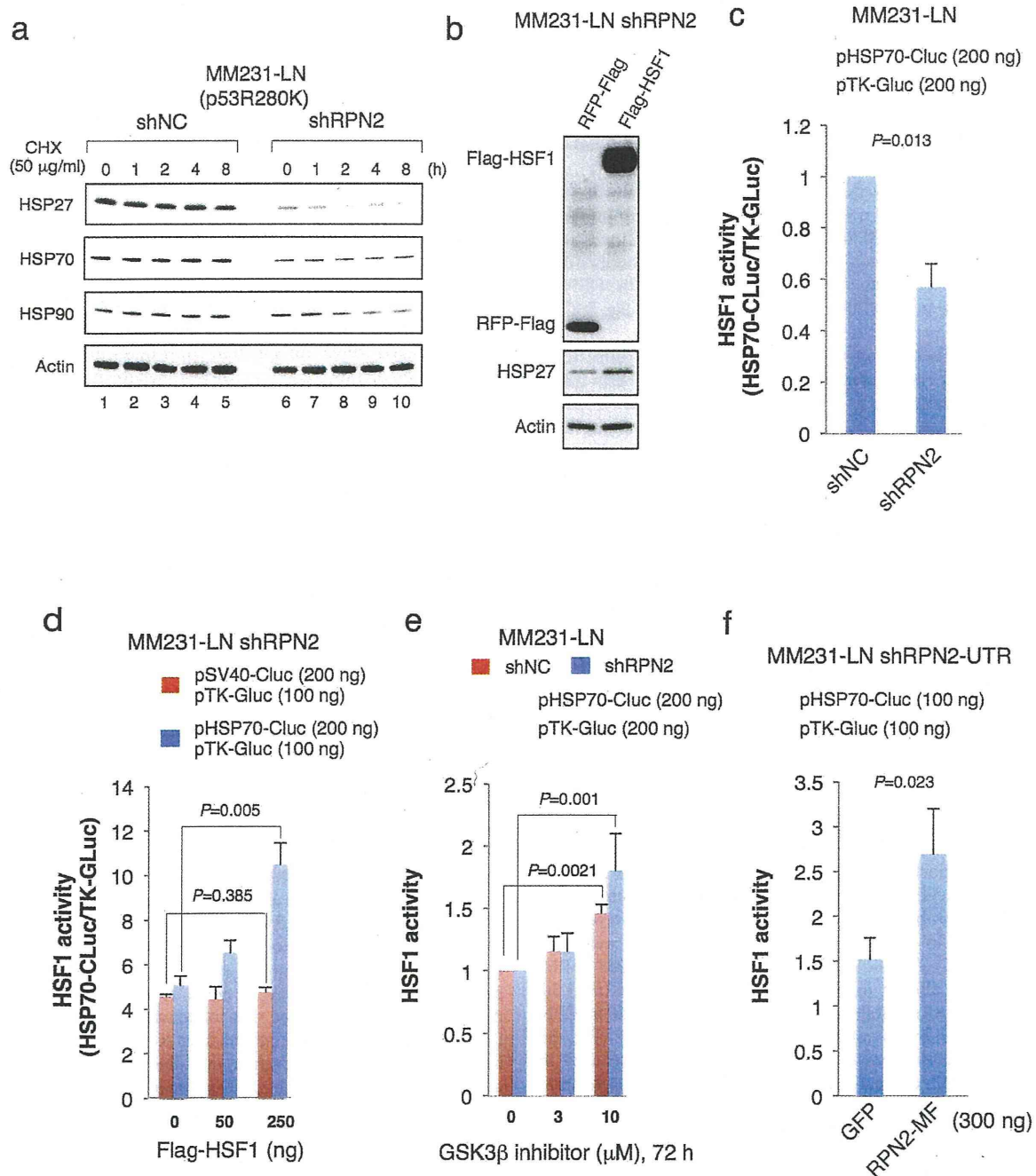
(Suppl. Fig. S5A). Immunoblot analysis revealed that RPN2 knockdown reduced the expression of HSP70 (Fig. 5a, lanes 1 and 6). We also confirmed the downregulation of HSP27 that is a transcriptional target of HSF1<sup>31,32</sup> and contributes the maintenance of breast CSCs through the regulation of EMT and NF- $\kappa$ B activity<sup>33</sup> (Fig. 5a, lane 1 and 6). Importantly, HSP70 protein also functions as co-chaperones for HSP90<sup>9</sup>. Therefore, we examined the effect of HSP70 downregulation on the destabilization of HSP90 by blocking

protein synthesis with cycloheximide (CHX) treatment (Fig. 5a). While the effect on HSP70 protein stability was minimal, RPN2 knockdown reduced the stability and half-life of HSP90 (Fig. 5a and Suppl. Fig. S6). We also confirmed that the expression of N-terminal Flag-tagged HSF1 (Flag-HSF1) restored HSP27 expression in MM231-LN shRPN2 cells (Fig. 5b).

Next, we examined the HSF1 transcriptional activity by using the expression vector of HSP70 promoter-driven secreted cypridina luci-



**Figure 4 | RPN2 antagonizes GSK3 $\beta$  function via physical interaction.** (a) and (b) RPN2 associated with GSK3 $\beta$  in MM231-LN cells. In the left panel, cell lysates were subjected to co-immunoprecipitation with an anti-RPN2 antibody and subjected to western blotting with anti-RPN2 (top), anti-GSK3 $\beta$  (middle) or anti-Phospho-GSK3 $\beta$  (Tyr216) antibodies (bottom). In the right panel, cell lysates were subjected to co-immunoprecipitation with an anti-GSK3 $\beta$  antibody and subjected to western blotting with anti-GSK3 $\beta$  (top and middle) and anti-RPN2 antibodies (bottom). (c) GSK3 $\beta$  associated with RPN2 in 293T cells. Cell lysates were subjected to co-immunoprecipitation with anti-HA Agarose and western blotting with anti-GSK3 $\beta$  (top), anti-GFP (middle), anti-RPN2 (bottom) or anti-Phospho-GSK3 $\beta$  (Tyr216) antibodies. (d) RPN2 associated with phosphorylated GSK3 $\beta$  in 293T cells. Cell lysates were subjected to co-immunoprecipitation with an anti-RPN2 antibody and western blotting with anti-RPN2 (top), anti-GFP (middle), anti-GSK3 $\beta$  (bottom) or anti-Phospho-GSK3 $\beta$  (Tyr216) antibodies. (e) Schematic representation of GSK3 $\beta$  and its deletion mutants. The binding domain (BD) designates the GSK3 $\beta$ -specific binding sites for its substrates and protein complexes. (f) RPN2-Myc-Flag, GSK3 $\beta$ -HA and the GSK3 $\beta$  deletion mutants were expressed in 293T cells and immunoprecipitated (IP) with an anti-HA antibody. Lysates (input) and immunoprecipitates were immunoblotted to detect co-immunoprecipitated RPN2. (g) Flow cytometry analysis and quantification of the percentage of E-cadherin-negative cells in 293T cells at 48 h after transfection. The amount of plasmid DNA used in each experiment was indicated in the figure. Full-length gels and blots are shown in supplementary figure 13 and 14.



**Figure 5 | RPN2 knockdown suppressed the heat shock proteins via GSK3 $\beta$  activation.** (a) RPN2 knockdown suppressed the expression of HSP27 and HSP70 and reduced HSP90 protein stability. MM231-LN shNC and MM231-LN shRPN2 cells were treated with cycloheximide (50  $\mu$ g/ml) for 0–8 h. Cell lysates were subjected to western blotting with anti-HSP27, anti-HSP70, anti-HSP90 and anti-actin antibodies. (b) HSF1 restored the HSP27 expression in MM231-LN shRPN2 cells. After transfection of pFlag-HSF1 into MM231-LN shRPN2 cells, Cell lysates were subjected to western blotting with anti-Flag (top), anti-HSP27 (middle), anti-actin (bottom) antibodies. (c) HSF1 transcriptional activity in RPN2 knockdown cell line. HSP70 promoter-driven cypridina luciferase activity (HSP70-CLuc) was normalized to the thymidine kinase promoter-driven gaussia luciferase activity (TK-GLuc). MM231-LN shNC or MM231-LN shRPN2 cells were transfected with 200 ng of pHSP70-Cluc in combination with 200 ng of pTK-GLuc. Transfection and luciferase assays were performed as described in experimental procedure. (d) HSF1 restored the HSP70 expression in MM231-LN shRPN2 cells. MM231-LN shRPN2 cells were transfected with pFlag-HSF1 with 200 ng of pHSP70-Cluc, or pSV40-Cluc in combination with 100 ng of pTK-GLuc, and luciferase activity was measured at 48 h after transfection. (e) GSK3 $\beta$  inhibitor restored HSF1 transcriptional activity. Six hours after transfection, cells were exposed to CHIR99021 (3, 10  $\mu$ M) or an equivalent volume of dimethyl sulfoxide as a control added to the growth medium (CHIR99021, 0  $\mu$ M). Treatments lasted for 72 h, after which the luciferase activity was examined. (f) Rescue experiment using MM231-LN shRPN2-UTR cells. RPN2-MF restored the HSP70 activity in MM231-LN shRPN2-UTR cells. pHSP70-Cluc was transfected into MM231-LN shRPN2-UTR cells with 300 ng of pCMV-RPN2-MF, or pEGFP-N1 in combination with 100 ng of pTK-GLuc, and luciferase activity was measured at 48 h after transfection. Full-length gels and blots are shown in supplementary figure 15.



ferase (HSP70-Cluc, Fig. 5c). Luciferase assays showed that RPN2 knockdown induced a 50% repression of HSF1 activity (Fig. 5c). When Flag-HSF1 was transfected with HSP70-Cluc in MM231-LN shRPN2 cells, luciferase activity was markedly enhanced 1.5- to 3-fold compared with those transfected with SV40 promoter-driven secreted cypridina luciferase (SV40-Cluc, Fig. 5d). We also confirmed that GSK3 $\beta$  inhibitor restored the HSF1 transcriptional activity in MM231-LN shRPN2 cells (Fig. 5e).

We also examined whether HSF1 activity correlated with RPN2 expression using MM231-LN cells expressing HSP70 promoter-driven GFP (MM231-LN HSP70-GFP) (Suppl. Fig. S5B). Flow cytometry and qRT-PCR analysis of MM231-LN HSP70-GFP cells showed that HSP70 and RPN2 were more highly expressed in the GFP high cell fraction than in the GFP low cell fraction (Suppl. Fig. S5C and 5D).

Finally, to exclude the off-target effects of shRNA against RPN2, we performed the rescue experiment using MM231-LN cells expressing shRNA against the 3'-untranslated region of RPN2 (Suppl. Fig. 5E, MM231-LN shRPN2-UTR) to replace endogenous RPN2 with ectopically expressed RPN2-MF. Compared to the co-expression of shRPN2-UTR with GFP, co-expression of shRPN2-UTR with RPN2-MF restored the HSF1 activity in MM231-LN shRPN2-UTR cells (Fig. 5f). These results strongly suggest that the formation of RPN2/GSK3 $\beta$  protein complexes inhibits the function of GSK3 $\beta$ , and that RPN2 knockdown induces the destabilization of mtp53 by GSK3 $\beta$ -mediated inactivation of heat shock proteins, leading to CSC phenotypic suppression.

**RPN2 knockdown induces mtp53 degradation.** Since RPN2 knockdown promoted GSK3 $\beta$ -mediated inactivation of heat shock proteins that are essential for mtp53 stabilization<sup>6,25</sup>, we examined the expression and stability of mtp53 in MCF7-ADR and MM231-LN cells that express a p53 deletion mutant (p53 deletion 126–133)<sup>34</sup> and a p53 point mutant (p53R280K)<sup>5</sup>, respectively (Fig. 6a and b). Immunoblot analysis with MCF7-ADR and MM231-LN cells showed that RPN2 knockdown induced mtp53 downregulation (Fig. 6b). As the lentivirus vector expressing shRPN2 also expressed the reporter gene GFP, mtp53 expression was examined in GFP-positive cells. Immunofluorescence staining with anti-p53 and anti-GFP antibodies revealed that mtp53 levels were considerably reduced in cells expressing shRPN2 compared with those expressing shNC (Fig. 6c). QRT-PCR revealed that p53 mRNA levels were not altered in MM231-LN shRPN2 cells (Fig. 6d). Therefore, the protein stability of mtp53 was examined in RPN2 knockdown cells by cycloheximide (CHX) treatment (Fig. 6e). Immunoblot analysis showed that RPN2 knockdown reduced the half-life of mtp53 compared to the control (Fig. 6e and Suppl. Fig. S6). These findings were confirmed by RPN2 and mtp53 immunohistochemical staining in mouse MM231-LN tumors. Accumulation of mtp53 was observed in primary tumors with strong RPN2 expression but was reduced in primary tumors with low RPN2 expression (Fig. 6f). Immunohistochemical staining for RPN2 and mtp53 expression in breast cancer tissues yielded similar results to those obtained using tissues from subjects with a high incidence of lymph node metastasis (Fig. 6g and Suppl. Fig. S7).

To further elucidate the role of RPN2 in tumor initiation and metastasis, we performed label-free proteomic analysis, two-dimensional image-converted analysis of liquid chromatography and mass spectrometry (2DICAL)<sup>35</sup>, and identified proteins differentially expressed between MM231-LN shRPN2 and MM231-LN shNC cells (Fig. 7a–c and Suppl. Table S1). Although several proteins were differentially expressed, we focused on 14-3-3zeta upregulation, which has been implicated in breast cancer pathogenesis<sup>36,37</sup>. Despite the suppression of CSC phenotypes by RPN2 knockdown (Fig. 1–6), 14-3-3zeta was upregulated in RPN2 knockdown cells, which is a typical feature of the early stages of breast cancer wherein

14-3-3zeta upregulation promotes wtp53 degradation via phosphorylation of the MDM2 E3 ligase, and thus, cancer progression<sup>36,37</sup>. Although the peptide specificity was very low, 2DICAL also showed that RPN2 knockdown induced the downregulation of mtp53 (Suppl. Table S1). Consistent with previous reports<sup>36,37</sup>, we confirmed that N-terminal Halo-tagged 14-3-3zeta (H-14-3-3zeta) induced downregulation of wtp53 in MCF7 cells (Fig. 7d). Determination of the effect of 14-3-3zeta upregulation on the mtp53 protein stability revealed that H-14-3-3zeta expression partially induced RPN2 expression in MM231-LN cells (Fig. 7e). We also observed that RPN2 overexpression induced mtp53 upregulation in MM231-LN cells (Fig. 7f) and that mtp53 knockdown strongly reduced the expression of 14-3-3zeta in MM231-LN cells (Fig. 7g). Moreover, 14-3-3zeta knockdown reduced the expression of RPN2 in MM231-LN cells (Fig. 7h and Suppl. Fig. S18). These results suggest that 14-3-3zeta-mediated RPN2 upregulation contributes to the stability and accumulation of mtp53 and that RPN2 knockdown inhibits the 14-3-3zeta-dependent feedback regulation of mtp53 protein stability (Suppl. Fig. S8).

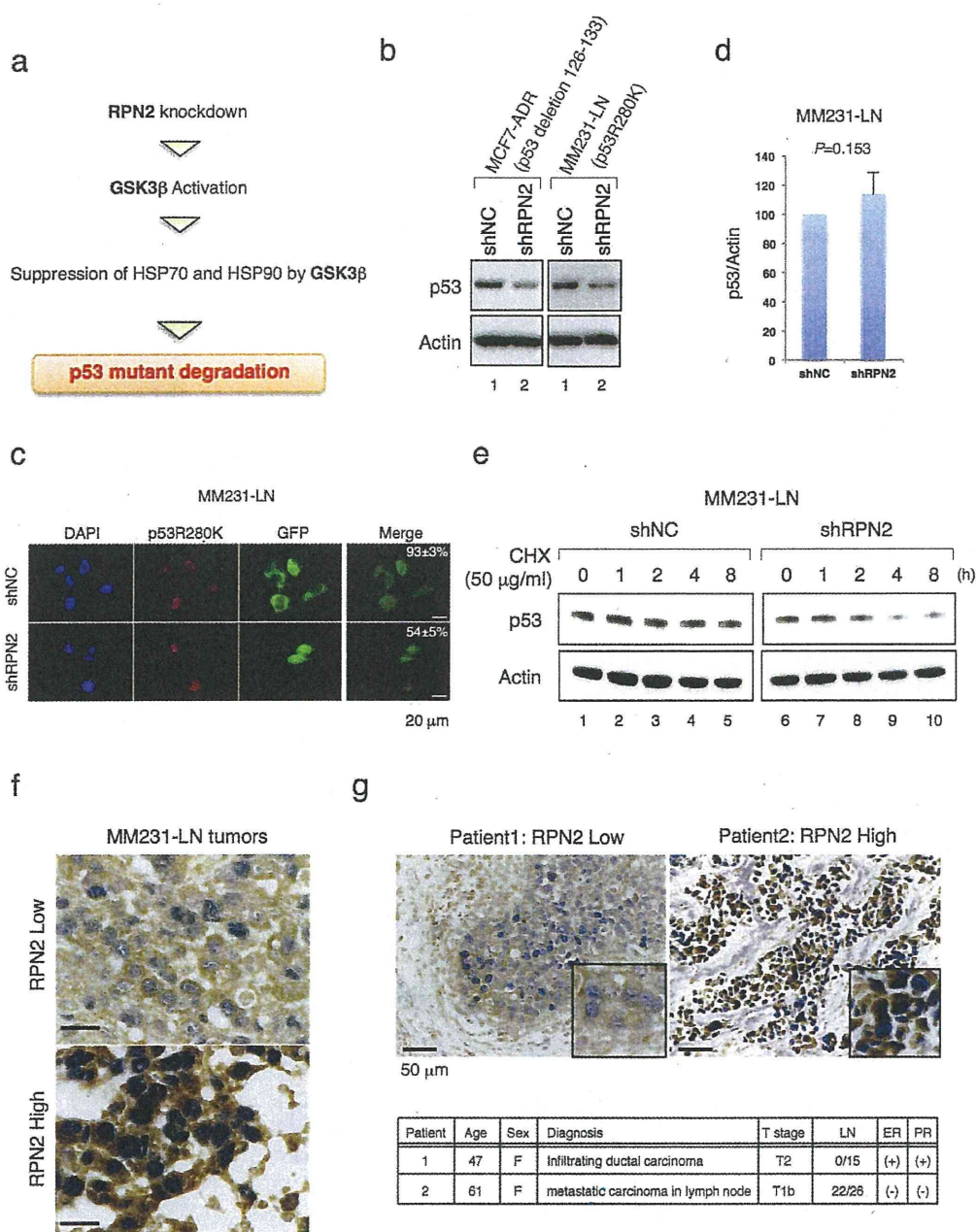
## Discussion

LOF or mtp53 accumulation is associated with acquisition of the EMT phenotype and development of high-grade tumors in breast cancers<sup>1</sup>. The half-life of wtp53 is < 30 min, whereas mtp53 is more stable, with a half-life of several hours<sup>34,38</sup>. Although the molecular mechanism of mtp53 stabilization is not completely understood, recent studies demonstrated that the contribution of mtp53 to tumor progression and its promotion of EMT onset account for the development of CSC properties<sup>11,14</sup>. Several pathways such as Wnt/ $\beta$ -catenin, TGF- $\beta$ , Notch and Hedgehog signaling are critical for the acquisition of CSC properties<sup>20</sup>. In the present study, we provide evidence that the expression of RPN2 is regulated by p53 mutant (R280K and del126-133) which is associated with the acquisition of EMT phenotype in breast cancer and that RPN2 regulates CSC phenotypes via stabilization of mtp53 (R280K and del126-133). We demonstrated that shRNA-mediated knockdown of RPN2 significantly suppresses the CSC phenotype *in vitro* and *in vivo* and promotes GSK3 $\beta$ -mediated destabilization of mtp53.

While GSK3 $\beta$  promotes ubiquitin-proteasome pathway-mediated  $\beta$ -catenin degradation<sup>39</sup> and suppresses Snail expression at transcriptional and post-transcriptional levels<sup>15,16</sup>, it is unclear how GSK3 $\beta$  suppresses CSC tumorigenesis and metastasis. Our results demonstrate, for the first time, a novel role for GSK3 $\beta$  in mtp53 destabilization and indicate that its activity is regulated by RPN2 (Fig. 4–6). We also demonstrated that RPN2 antagonized GSK3 $\beta$  function via physical interaction, and identified N-terminal amino acids 56–85 of GSK3 $\beta$  as important for its interaction with RPN2 (Fig. 4). Our previous study showed that RPN2 affects docetaxel resistance by modulating the N-linked glycosylation of P-glycoprotein<sup>19</sup>. Ribophorin-1 (RPN1) is also a component of the oligosaccharide transferase (OST) complex<sup>40,41</sup>. However, a recent study showed that RPN1 regulates the cell surface localization of  $\mu$ -opioid receptor (MOR) via direct interaction with MOR<sup>42</sup>. Therefore, our data suggest that, in addition to being a component of the OST complex, RPN2 may play an important role in tumor onset and metastasis.

HSP90 is a promising therapeutic target for cancer therapy because the HSP90 chaperone machinery is upregulated and activated in malignant cancers and inhibition of this single protein causes the simultaneous degradation of multiple oncoproteins<sup>8,9</sup>. The stabilization and accumulation of mtp53 is associated with the formation of stable protein complexes between HSP90 and various types of mtp53, and the formation of such complexes inhibits the constitutive E3 ligase activity of MDM2 and CHIP<sup>6,25</sup>. Therefore, the identification and development of HSP90 inhibitors has been a focus of several studies<sup>8,43</sup>. One of main problems associated with the inhibition of HSP90 is the HSF1-dependent induction of HSP70

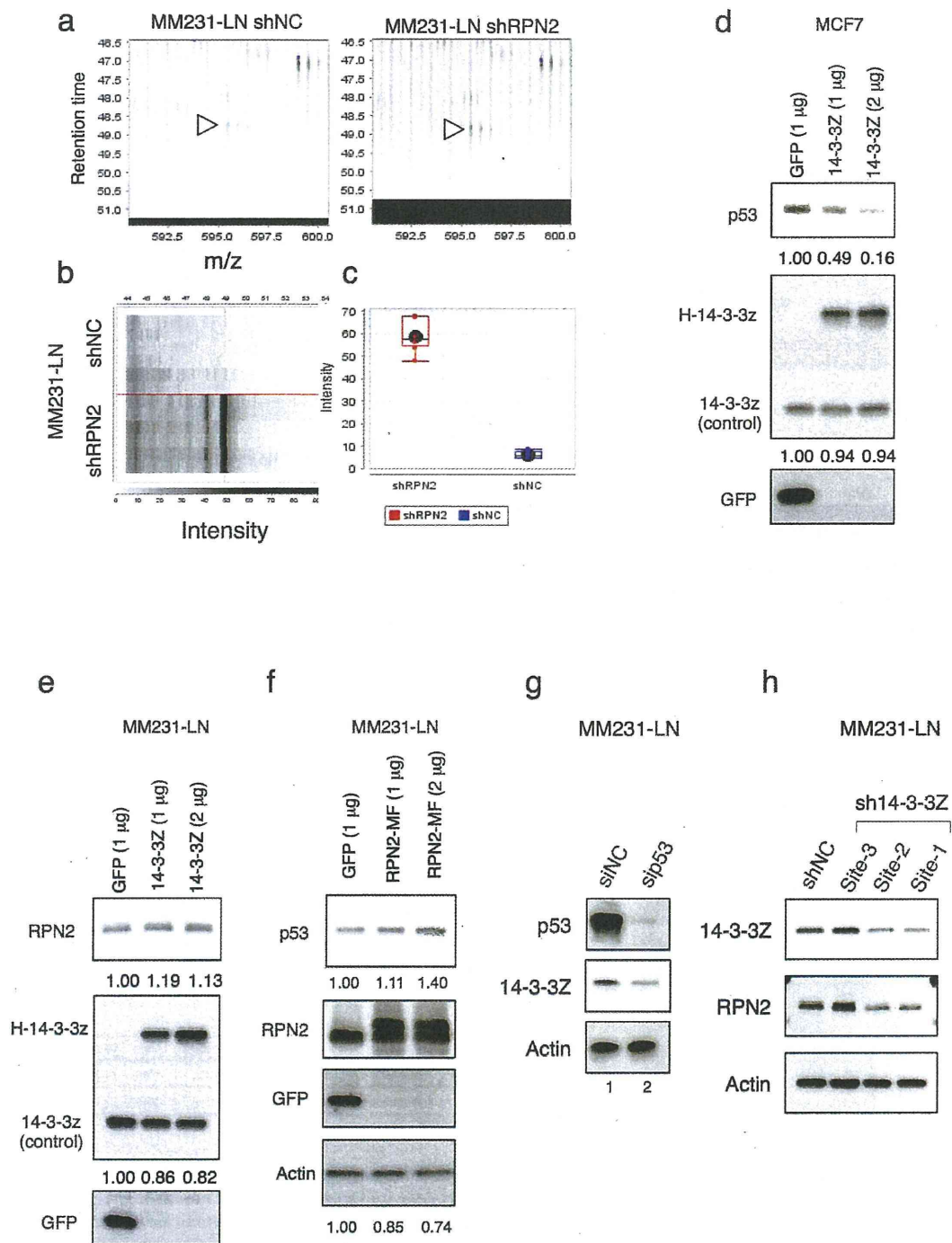




**Figure 6 | RPN2 knockdown induces mtp53 degradation.** (a) Working model for GSK3 $\beta$ -mediated downregulation of mtp53 in RPN2 knockdown cells. (b) and (d) Expression of mutant p53 (mtp53) in MCF7-ADR and MM231-LN cells. (c) Expression of mtp53 in MM231-LN shNC and MM231-LN shRPN2 cells. Immunofluorescence staining of mtp53 (Red) and GFP (Green) and merged images are shown. Nuclei are shown in blue (DAPI). Scale bar, 20  $\mu$ m. (e) RPN2 knockdown reduced mtp53 protein stability. MM231-LN shNC and MM231-LN shRPN2 cells were treated with cycloheximide (50  $\mu$ g/ml) for 0–8 h. Cell lysates were subjected to western blotting with anti-p53 and anti-actin antibodies. (f) Expression of RPN2 and mtp53 in MM231-LN tumors in mice. Panels show representative immunohistochemistry results for RPN2 (Brown) and mtp53 (Blue) in MM231-LN tumors. Scale bar, 20  $\mu$ m. (g) The status of RPN2 (Brown) and mtp53 (Blue) in breast cancer tissues. The tissue sections obtained from patients were classified by the extent of lymph node metastasis (LN). ER, Estrogen Receptor; PR, Progesterone Receptor. Scale bar, 50  $\mu$ m. Full-length gels and blots are shown in supplementary figure 16.

and HSP27 in response to HSP90 inhibitor treatment<sup>8,9</sup>. Considering that HSP70 chaperones also act as co-chaperones for HSP90 and have a well-documented antiapoptotic function that is independent of their interaction with HSP90<sup>9,44</sup>, our finding that RPN2 knockdown suppresses HSP70 expression (Fig. 6) is important not only for understanding the regulation of mtp53 stability, but also for developing ways to overcome the side effects of HSP90 inhibitors.

We also found that 14-3-3zeta involved in the stabilization and accumulation of mtp53 (Fig. 7 and Suppl. Fig S8). Since forced expression of 14-3-3zeta showed only a modest effect on RPN2 expression in MM231-LN (Fig. 7e), it might be necessary to consider the other molecules and pathways that regulate RPN2 expression. In a clinical study, the upregulation of *14-3-3zeta* via amplification of the chromosome region where it is located (8q22) promoted chemoresistance to anthracyclines and metastatic recurrence of breast



**Figure 7** | 14-3-3zeta-mediated RPN2 upregulation is required for the mtp53 stability. (a) Detected peptides that differed between RPN2 knockdown cell line (MM231-LN shRPN2) and control (MM231-LN shNC). MS peak of 14-3-3Zeta (1433Z) in MM231-LN shNC (Right) and MM231-LN shRPN2 (Left) (indicated by arrows). (b) Gel-like views of MS peaks with retention time (RT) along the vertical axes (top) and distribution of the mean peak intensity of duplicates (bottom) across 6 samples. (c) Spot intensity of 14-3-3Z in MM231-LN shNC and MM231-LN shRPN2. (d) 14-3-3zeta reduced wtp53 expression. Lysates from MCF7 cells, transfected as indicated, were immunoblotted as shown. (e) and (f) RPN2 stabilized mtp53 in MM231-LN cells. Lysates from MM231-LN cells, transfected as indicated, were immunoblotted as shown. (g) and (h) 14-3-3zeta-dependent feedback regulation of mtp53 protein stability. Full-length gels and blots are shown in supplementary figure 17 and 18.

cancer<sup>45</sup>. However, the molecular mechanism underlying the chemoresistance and tumor recurrence has not been addressed. A recent study also showed that anthracyclines increase the amount of mtp53 mRNA and protein<sup>46</sup>. Therefore, the present study provides

further insight into these mechanisms by showing that 14-3-3zeta promotes breast cancer malignancy.

TP53 mutations are present in 80% of triple-negative breast cancers (TNBC), which are characterized by the lack of estrogen and