

38	Shien K, <u>Toyooka S</u> , Yamamoto H, Soh J, Jida M, Thu KL, Hashida S, Maki Y, Ichihara E, Asano H, Tsukuda K, Takigawa N, Kiura K, Gazdar AF, Lam WL, Miyoshi S.	Acquired resistance to EGFR inhibitors is associated with a manifestation of stem cell-like properties in cancer cells.	Cancer Res	73(10)	3051-61	2013
39	Tanaka N, <u>Toyooka S</u> , Soh J, Tsukuda K, Shien K, Furukawa M, Muraoka T, Maki Y, Ueno T, Yamamoto H, Asano H, Otsuki T, Miyoshi S.	Downregulation of microRNA-34 induces cell proliferation and invasion of human mesothelial cells.	Oncol Rep	29(6)	2169-74	2013
40	<u>Okamoto I</u> (Correspondence author), Aoe K, Kato T, Hosomi Y, Yokoyama A, Imamura F, Hirashima T, Nishio M, Nogami N, <u>Okamoto H</u> , <u>Saka H</u> , Yamamoto N, Yoshizuka N, Sekiguchi R, Kiyosawa K, Nakagawa K, Tamura T	Pemetrexed and carboplatin followed by pemetrexed maintenance therapy in chemo-naïve patients with advanced nonsquamous non-small cell lung cancer	Investigational New Drugs	31(5)	1275-1282	2013
41	Oki M, <u>Saka H</u> , Kitagawa C, Kogure Y, Murata N, Adachi T, Ando M.	Rapid On-Site Cytologic Evaluation during Endobronchial Ultrasound-Guided Transbronchial Needle Aspiration for Diagnosing Lung Cancer: A Randomized Study.	Respiration	85(6)	486-92	2013
42	Oki M, <u>Saka H</u> .	New Dedicated Bifurcated Silicone Stent Placement for Stenosis Around the Primary Right Carina.	Chest	144(2)	450-5	2013
43	Oki M, <u>Saka H</u> , Kitagawa C, Kogure Y, Murata N, Adachi T, Ichihara S, Moritani S	Transesophageal bronchoscopic ultrasound-guided fine needle aspiration for diagnosis of sarcoidosis.	Respiration	85(2)	137-43	2013
44	Kogure Y, Ando M, <u>Saka H</u> , Chiba Y, Yamamoto N, Asami K, Hirashima T, Seto T, Nagase S, Otsuka K, Yanagihara K, Takeda K, Okamoto I, Aoki T, Takayama K, Yamasaki M, Kudoh S, Katakami N, Miyazaki M, Nakagawa K.	Histology and Smoking Status Predict Survival of Patients with Advanced Non-Small-Cell Lung Cancer:: Results of West Japan Oncology Group (WJOG) Study 3906L	J Thorac Oncol	8(6)	753-8	2013
45	Kawaguchi T, Ando M, Ito N, Isa S, Tamiya A, Shimizu S, <u>Saka H</u> , Kubo A, Koh Y, Matsumura A.	Rationale and design of the japan molecular epidemiology for lung cancer study.	Lung Cancer	14(5)	596-600	2013

46	Shindo Y, Kobayashi D, Ando M, Ichikawa M, Shiraki A, Goto Y, Fukui Y, Iwaki M, Okumura J, Yamaguchi I, Yagi T, Tanikawa Y, Sugino Y, Shindoh J, Ogasawara T, Nomura F, <u>Saka H</u> , Yamamoto M, Yaniguchi H, Suzuki R, Saito H, Kawamura T, Hasegawa Y.	Risk factors for Drug-resistant pathogens in community-acquired and healthcare-associated pneumonia.	Am J Respir Crit Care Med.	188(8)	985-95	2013
47	Taniguchi C, Tanaka H, Oze I, Ito H, <u>Saka H</u> , Tachibana K, Tokoro A, Nozaki Y, Nakamichi N, Suzuki Y, Suehisa H, Sakakibara H.	Factors associated with weight gain after smoking cessation therapy in Japan.	Nursing Research	62(6)	414-21	2013
48	小暮啓人, 坂 英雄.	肺がんの薬物療法—最近の進歩 MEK阻害剤の展望	腫瘍内科	11(1)	80-84	2013
49	Kawase A, Yoshida J, Miyaoka E, Asamura H, Fujii Y, Nakanishi Y, Eguchi K, Mori M, Sawabata Y, Okumura M, <u>Yokoi K</u> .	Visceral pleural invasion classification in non-small cell lung cancer in the 7th Edition of the TNM Classification for lung cancer: validation analysis based on a large-scale nationwide database	J Thorac Oncol	8(5)	606-611	2013
50	Watanabe S, Asamura H, Miyaoka E, Okumura M, Yoshino I, Fujii Y, Nakanishi Y, Eguchi K, Mori M, Sawabata Y, <u>Yokoi K</u> .	Results of T4 surgical cases in the Japanese Lung Cancer Registry Study: Should mediastinal fat tissue invasion really be included in the T4 category?	J Thorac Oncol	8(6)	759-765	2013
51	Matsuguma H, Oki I, Nakahara R, Suzuki H, Kasai T, Kamiyama Y, Igarashi S, Mori K, Endo S, <u>Yokoi K</u> .	Comparison of three parameters on computed tomography for the prediction of less-invasiveness in patients with clinical stage I non-small cell lung cancer.	Ann Thorac Surg	95(6)	1878-1884	2013
52	Nakamura S, Fukui T, Taniguchi T, Usami N, Kawaguchi K, Ishiguro F, Hirakawa A, <u>Yokoi K</u> .	Prognostic impact of the tumor size eliminating the ground glass opacity component: modified clinical T descriptors of the TNM classification of lung cancer.	J Thorac Oncol	8(12)	1551-1557	2013
53	Sakurai H, Asamura H, Miyaoka E, Yoshino I, Fujii Y, Nakanishi Y, Eguchi K, Mori M, Sawabata Y, Okumura M, <u>Yokoi K</u> .	Differences in the prognosis of resected lung adenocarcinoma according to the histologic subtypes: a retrospective analysis of Japanese Lung Cancer Registry data.	Eur J Cardiothorac Surg	45(1)	100-107	2014

54	Inoue M, Okumura M, Sawabata Y, Miyaoka E, Asamura H, Yoshino I, Tada H, Fujii Y, Nakanishi Y, Eguchi K, Mori M, Kobayashi H, <u>Yokoi K.</u>	Clinicopathological characteristics and surgical results of lung cancer patients aged up to 50 years: the Japanese Lung Cancer Registry Study 2004.	Lung Cancer	83(2)	246-251	2014
55	<u>Takiguchi Y.</u> , Sekine, I. and Iwasawa, S.	Overdiagnosis in Lung Cancer Screening with Low-Dose Computed Tomography.	Journal of Thoracic Oncology	8 (11)	e101-e102	2013
56	Shimomura, I., Tada, Y., Miura, G., Suzuki, T., Matsumura, T., Tsushima, K., Terada, J., Kurimoto, R., Sakaida, E., Sekine, I., <u>Takiguchi Y.</u> , Yamamoto, S. and Tatsumi, K.	Choroidal metastasis of non-small cell lung cancer that responded to gefitinib.	Case Reports In Ophthalmological Medicine	2013(5)	213124	2013
57	Shiiba, M., Shinozuka, K., Saito, K., Fushimi, K., Kasamatsu, A., Ogawara, K., Uzawa, K., Ito, H., <u>Takiguchi Y.</u> and Tanzawa, H.	MicroRNA-125b regulates proliferation and radioresistance of oral squamous cell carcinoma.	British journal of cancer	108 (9)	1817-1821	2013
58	Shiiba, M., Saito, K., Fushimi, K., Ishigami, T., Shinozuka, K., Nakashima, D., Kouzu, Y., Koike, H., Kasamatsu, A., Sakamoto, Y., Ogawara, K., Uzawa, K., <u>Takiguchi Y.</u> and Tanzawa, H.	Lipocalin-2 is associated with radioresistance in oral cancer and lung cancer cells.	International journal of oncology	42	1197-1204	2013
59	Sekine, Y., Fujisawa, T., Suzuki, K., Tsutatani, S., Kubota, K., Ikegami, H., Isobe, Y., Nakamura, M., <u>Takiguchi Y.</u> and Tatsumi, K.	Detection of Chronic Obstructive Pulmonary Disease in Community-Based Annual Lung Cancer Screening: Chiba COPD Lung Cancer Screening Study Group.	Respirology	19 (1)	98-104	2014
60	Sekine, I. and <u>Takiguchi Y.</u>	Clinical Classification of Targeted Agents Used for Anticancer Treatment.	The Tohoku Journal of Experimental Medicine	230 (1)	1-5	2013
61	Sakaida, E., Sekine, I., Iwasawa, S., Kurimoto, R., Uehara, T., Ooka, Y., Akanuma, N., Tada, Y., Imai, C., Oku, T. and <u>Takiguchi Y.</u>	Incidence, Risk Factors and Treatment Outcomes of Extravasation of Cytotoxic Agents in an Outpatient Chemotherapy Clinic.	Japanese Journal Of Clinical Oncology	in press		2014
62	Saito, T., Chiba, T., Yuki, K., Zen, Y., Oshima, M., Koide, S., Motoyama, T., Ogasawara, S., Suzuki, E., Ooka, Y., Tawada, A., Tada, M., Kanai, F., <u>Takiguchi Y.</u> , Iwama, A. and Yokosuka, O.	Metformin, a Diabetes Drug, Eliminates Tumor-Initiating Hepatocellular Carcinoma Cells.	PloS one	8 (7)	e70010	2013

63	Okamoto, S., Jiang, Y., Kawamura, K., Shingyoji, M., Fukamachi, T., Tada, Y., <u>Takiguchi, Y.</u> , Tatsumi, K., Shimada, H., Hiroshima, K., Kobayashi, H. and Tagawa, M.	Zoledronic Acid Produces Combinatory Anti-Tumor Effects with Cisplatin on Mesothelioma by Increasing p53 Expression Levels.	PloS one	8 (3)	e60297	2013
64	Li, Q., Kawamura, K., Yang, S., Okamoto, S., Kobayashi, H., Tada, Y., Sekine, I., <u>Takiguchi, Y.</u> , Shingyoji, M., Tatsumi, K., Shimada, H., Hiroshima, K. and Tagawa, M.	Interferon- $\beta$ Produces Synergistic Combinatory Anti-Tumor Effects with Cisplatin or Pemetrexed on Mesothelioma Cells.	PloS one	8 (8)	e72709	2013
65	Kurahashi, I., Fujita, Y., Arao, T., Kurata, T., Koh, Y., Sakai, K., Matsumoto, K., Tanioka, M., Takeda, K., <u>Takiguchi, Y.</u> , Yamamoto, N., Tsuya, A., Matsubara, N., Mukai, H., Minami, H., Chayahara, N., Yamanaka, Y., Miwa, K., Takahashi, S., Takahashi, S., Nakagawa, K. and Nishio, K.	A microarray-based gene expression analysis to identify diagnostic biomarkers for unknown primary cancer.	PloS one	8 (5)	e63249	2013
66	Kitazono, S., <u>Takiguchi, Y.</u> , Ashinuma, H., Saito-Kitazono, M., Kitamura, A., Chiba, T., Sakaida, E., Sekine, I., Tada, Y., Kurosu, K., Sakao, S., Tanabe, N., Iwama, A., Yokosuka, O. and Tatsumi, K.	Effect of metformin on residual cells after chemotherapy in a human lung adenocarcinoma cell line.	International journal of oncology	43 (6)	1846-54	2013
67	Kitamura, A. and <u>Takiguchi, Y.</u>	Pathological diagnosis with endobronchial ultrasonography-guided transbronchial needle aspiration (EBUS-TBNA).	Sarcoidosis	Chapter 11	257-271	2013
68	Kawamura, K., Hiroshima, K., Suzuki, T., Chai, K., Yamaguchi, N., Shingyoji, M., Yusa, T., Tada, Y., <u>Takiguchi, Y.</u> , Tatsumi, K., Shimada, H. and Tagawa, M.	CD90 Is a Diagnostic Marker to Differentiate Between Malignant Pleural Mesothelioma and Lung Carcinoma With Immunohistochemistry.	American journal of clinical pathology	140 (4)	544-549	2013
69	Sakairi, Y., Sato, K., Itoga, S., Saegusa, F., Matsushita, K., Nakajima, T., Yoshida, S., <u>Takiguchi, Y.</u> , Nomura, F. and Yoshino, I.	Transbronchial biopsy needle rinse solution used for comprehensive biomarker testing in patients with lung cancer.	Journal Of Thoracic Oncology	9 (1)	26-32	2014

70	Yuki Misumi, Makoto Nishio, Toshiaki Takahashi, Fumiyoshi Ohyanagi, Atsushi Horiike, Haruyasu Murakami, Hirotsugu Kenmotsu, Nobuyuki Yamamoto, Mari Ishii, Tsuneo Shimokawa, Naoya Hida, and <u>Hiroaki Okamoto</u> .	A feasibility study of carboplatin plus irinotecan treatment for elderly patients with extensive disease small cell lung cancer.	Jpn J Clin Oncol.	44(2)	116-21	2013
71	Sekine I, <u>Okamoto H</u> , Horai T, Nakagawa K, Ohmatsu H, Yokoyama A, Katakami N, Shibuya M, Saijo N, Fukuoka M.	A Randomized Phase III Study of Single-Agent Amrubicin Vs. Carboplatin/Etoposide in Elderly Patients With Extensive-Disease Small-Cell Lung Cancer.	Clin Lung Cancer	15(2)	96-102	2013
72	Kubota K, Hida T, Ishikura S, Mizusawa J, Nishio M, Kawahara M, Yokoyama A, Imamura F, Takeda K, Negoro S, Harada M, <u>Okamoto H</u> , Yamamoto N, Shinkai T, Sakai H, Matsui K, Nakagawa K, Shibata T, Saijo N, Tamura T; Japan Clinical Oncology Group.	Etoposide and cisplatin versus irinotecan and cisplatin in patients with limited-stage small-cell lung cancer treated with etoposide and cisplatin plus concurrent accelerated hyperfractionated thoracic radiotherapy (JCOG0202): a randomised phase 3 study.	Lancet Oncol	15(1)	106-113	2014
73	Yoshiya S, Shirabe K, Nakagawara H, Soejima Y, Yoshizumi T, Ikegami T, Yamashita Y, Harimoto N, Nishie A, <u>Yamanaka T</u> , Maehara Y.	Portal Vein Thrombosis After Hepatectomy.	World J Surg.	Epub ahead of print		2014
74	Kawahara M, Atagi S, Komuta K, Yoshioka H, Kawasaki M, Fujita Y, Yonei T, Ogushi F, Kubota K, Nogami N, Tsuchiya M, Shibata K, Tomizawa Y, Minato K, Fukuoka K, Asami K, <u>Yamanaka T</u>	Carboplatin plus Either Docetaxel or Paclitaxel for Japanese Patients with Advanced Non-small Cell Lung Cancer.	Anticancer Res.	33(10)	4631-7	2013
75	Ueno T, Masuda N, <u>Yamanaka T</u> , Saji S, Kuroi K, Sato N, Takei H, Yamamoto Y, Ohno S, Yamashita H, Hisamatsu K, Aogi K, Iwata H, Sasano H, Toi M	Evaluating the 21-gene assay Recurrence Score® as a predictor of clinical response to 24 weeks of neoadjuvant exemestane in estrogen receptor-positive breast cancer.	Int J Clin Oncol.	Epub ahead of print		2013
76	Harimoto N, Shirabe K, Yamashita YI, Ikegami T, Yoshizumi T, Soejima Y, Ikeda T, Maehara Y, Nishie A, <u>Yamanaka T</u>	Sarcopenia as a predictor of prognosis in patients following hepatectomy for hepatocellular carcinoma.	Br J Surg.	100(11)	1523-30	2013

77	Bando H, Yoshino T, Shinozaki E, Nishina T, Yamazaki K, Yamaguchi K, Yuki S, Kajiura S, Fujii S, <u>Yamanaka T</u> , Tsuchihara K, Ohtsu A.	Simultaneous identification of 36 mutations in KRAS codons 61 and 146, BRAF, NRAS, and PIK3CA in a single reaction by multiplex assay kit.	BMC Cancer.	13(1)	405	2013
78	Watanabe M, Ishimoto T, Baba Y, Nagai Y, Yoshida N, <u>Yamanaka T</u> , Baba H.	Prognostic Impact of Body Mass Index in Patients with Squamous Cell Carcinoma of the Esophagus.	Ann Surg Oncol.	20	3984-3991	2013
79	Mano Y, Shirabe K, Yamashita Y, Harimoto N, Tsujita E, Takeishi K, Aishima S, Ikegami T, Yoshizumi T, <u>Yamanaka T</u> , Maehara Y.	Preoperative Neutrophil-to-Lymphocyte Ratio Is a Predictor of Survival After Hepatectomy for Hepatocellular Carcinoma: A Retrospective Analysis.	Ann Surg.	258(2)	301-305	2013
80	Tsutani Y, Miyata Y, <u>Yamanaka T</u> , Nakayama H, Okumura S, Adachi S, Yoshimura M, Okada M.	Solid tumors versus mixed tumors with a ground-glass opacity component in patients with clinical stage IA lung adenocarcinoma: Prognostic comparison using high-resolution computed tomography findings.	J Thorac Cardiovasc Surg.	146(1)	17-23	2013
81	Shimokawa M, Hasegawa S, Fukuoka K, Okada M, Yokoi K, Tanaka F, <u>Yamanaka T</u> , Daimon T, Nakano T	A Feasibility Study of Induction Pemetrexed Plus Cisplatin Followed by Pleurectomy/Decortication Aimed at Macroscopic Complete Resection for Malignant Pleural Mesothelioma.	Jpn J Clin Oncol.	43(5)	575-578	2013
82	Niho S, <u>Yamanaka T</u> , Umemura S, Matsumoto S, Yoh K, Goto K, Ohmatsu H, Ohe Y.	Renal Toxicity Caused by Brand-name Versus Generic Cisplatin: A Comparative Analysis.	Jpn J Clin Oncol.	43(4)	390-395	2013
83	Imai H, Shukuya T, Yoshino R, Muraki K, Mori K, Ono A, Akamatsu H, Taira T, <u>Kenmotsu H</u> , Naito T, Murakami H, Tomizawa Y, Takahashi T, Takahashi K, Saito R, Yamamoto N	Efficacy and Safety of Platinum Combination Chemotherapy Re-Challenge for Relapsed Patients with Non-Small-Cell Lung Cancer after Postoperative Adjuvant Chemotherapy of Cisplatin plus Vinorelbine.	Chemotherapy	24	307-313	2014
84	釘持広知	呼吸器悪性腫瘍の集学的治療 非小細胞肺癌に対する術後補助化学療法	呼吸器内科	24	107-113	2013
85	釘持広知	がんの薬物療法—最近の進歩 術後補助化学療法の展望	腫瘍内科	11	54-60	2013
86	釘持広知	肺癌化学療法の最前線 肺癌 の術後補助化学療法	呼吸	32	250-254	2013

## 書籍

	著者氏名	論文タイトル名	書籍全体の編集者名	書籍名	出版社名	出版地	出版年	ページ
1	北川智余恵, 坂 英雄.	Pharmacogenomicsと pharmacogenetics 2. Irinotecanの副作用	東京慈恵会 医科大学内科学講座 腫瘍・血液内科教授 相羽恵介	抗がん薬の臨床薬理	南山堂	日本	2013	102-9

#### IV. 研究成果の刊行物・別刷

##### 【研究代表者】

坪井 正博

##### 【分担研究者】

山本 信之  
瀬戸 貴司  
杉尾 賢二  
豊岡 伸一  
伊達 洋至  
岡本 勇  
坂 英雄  
横井 香平  
滝口 裕一  
岡本 浩明  
山中 竹春  
釵持 広知  
井上 謙吾



## Radiographically determined noninvasive adenocarcinoma of the lung: Survival outcomes of Japan Clinical Oncology Group 0201

Hisao Asamura, MD,<sup>a</sup> Tomoyuki Hishida, MD,<sup>b</sup> Kenji Suzuki, MD,<sup>c</sup> Teruaki Koike, MD,<sup>d</sup> Kenichi Nakamura, MD,<sup>e</sup> Masahiko Kusumoto, MD,<sup>a</sup> Kanji Nagai, MD,<sup>b</sup> Hirohito Tada, MD,<sup>f</sup> Tetsuya Mitsudomi, MD,<sup>g</sup> Masahiro Tsuboi, MD,<sup>h</sup> Taro Shibata, MSc,<sup>e</sup> and Haruhiko Fukuda, MD,<sup>e</sup> on behalf of the Japan Clinical Oncology Group Lung Cancer Surgical Study Group

**Objective:** The study objective was to evaluate the long-term survival of patients with radiographically determined noninvasive lung adenocarcinomas.

**Methods:** A prospective, multi-institutional study on image diagnosis to define early (noninvasive) adenocarcinomas of the lung (Japan Clinical Oncology Group 0201) has shown that a consolidation/tumor ratio on thin-section computed tomography 0.25 or less in cT1a ( $\leq 2.0$  cm) could be used as a better radiologic criterion for a noninvasive pathology than a consolidation/tumor ratio 0.50 or less in cT1a-b ( $\leq 3.0$  cm). From the prognostic viewpoints, these criteria were evaluated for 545 patients with adenocarcinoma who underwent lobectomy and lymph node dissection.

**Results:** The subjects consisted of 233 men and 312 women with a median age of 62 years. The median follow-up period among overall patients was 7.1 years (range, 0-8.5 years). The overall and relapse-free 5-year survivals of the overall patients were 90.6% and 84.7%, respectively. When a consolidation/tumor ratio 0.5 or less in cT1a-b was used as a cutoff, the 5-year overall survivals of radiologic noninvasive (121 patients, 22.2%) and invasive (424 patients, 77.8%) adenocarcinomas were 96.7% and 88.9%, respectively, and the difference was statistically significant ( $P < .001$ , log-rank test). With the use of a consolidation/tumor ratio 0.25 or less in cT1a, the 5-year overall survivals of radiologic noninvasive (35 patients, 12.1%) and invasive (254 patients, 87.9%) adenocarcinomas were 97.1% and 92.4%, respectively, and the difference was not statistically significant ( $P = .259$ ).

**Conclusions:** The radiologic criteria of a consolidation/tumor ratio 0.25 or less in cT1a ( $\leq 2.0$  cm) and 0.50 in cT1a-b ( $\leq 3.0$  cm) were both able to define a homogeneous group of patients with an excellent prognosis before surgery. (*J Thorac Cardiovasc Surg* 2013;146:24-30)

Our understanding of the natural history of small, peripheral adenocarcinomas has greatly progressed.<sup>1-5</sup> This understanding is reflected in the recently revised international multidisciplinary classification of lung adenocarcinoma sponsored by the International Association for the Study of Lung Cancer, American Thoracic Society, and European Respiratory Society.<sup>6</sup>

This new classification is characterized by the creation/abandonment of some terminology for early and advanced adenocarcinomas and by a multidisciplinary approach for the application of the new classification in a clinical setting. In particular, the term “bronchioloalveolar carcinoma” is no longer used, and new concepts have been introduced, such as adenocarcinoma in situ and minimally invasive adenocarcinoma. Invasive adenocarcinomas are classified according to the predominant pattern after comprehensive histologic subtyping with lepidic, acinar, papillary, micropapillary, and solid patterns. The term “mixed subtype adenocarcinoma” is no longer used.

In this new proposal, the surgical features have been described as part of a multidisciplinary approach to the comprehensive classification of adenocarcinomas. Especially for early adenocarcinomas, crucial questions have been raised, such as “Is sublobar (limited) resection adequate oncological treatment for some early adenocarcinomas?” and “Can computed tomography (CT) be used to select patients for sublobar resection?”<sup>6,7</sup> The Japan Clinical Oncology Group (JCOG) conducted a prospective, radiologic study of thin-section computed tomography (TSCT) to identify radiologic criteria that predict pathologic noninvasiveness

From the National Cancer Center Hospital,<sup>a</sup> Tokyo, Japan; National Cancer Center Hospital East,<sup>b</sup> Kashiwa, Japan; Juntendo University Hospital,<sup>c</sup> Tokyo, Japan; Niigata Cancer Center Hospital,<sup>d</sup> Niigata, Japan; JCOG Data Center,<sup>e</sup> National Cancer Center, Tokyo, Japan; Osaka City General Hospital,<sup>f</sup> Osaka, Japan; Aichi Cancer Center Hospital,<sup>g</sup> Nagoya, Japan; and Kanagawa Cancer Center,<sup>h</sup> Yokohama, Japan.

This work was supported in part by National Cancer Center Research and Development Funds (23-A-16, 23-A-18) and Grants-in-Aid for Cancer Research (11S-2, 11S-4, 14S-2, 14S-4, 17S-2, 17S-5, 20S-2, 20S-5) from the Ministry of Health, Labour, and Welfare of Japan.

Disclosures: Authors have nothing to disclose with regard to commercial support. Received for publication June 19, 2012; revisions received Oct 5, 2012; accepted for publication Dec 11, 2012; available ahead of print Feb 11, 2013.

Address for reprints: Hisao Asamura, MD, 5-1-1 Tsukiji, Chuo-ku, Tokyo 104-0045, Japan (E-mail: hasamura@ncc.go.jp).

0022-5223/\$36.00

Copyright © 2013 by The American Association for Thoracic Surgery  
http://dx.doi.org/10.1016/j.jtcvs.2012.12.047

**Abbreviations and Acronyms**

CI	= confidence interval
CT	= computed tomography
C/T	= consolidation/tumor
GGO	= ground-glass opacity
JCOG	= Japan Clinical Oncology Group
TSCT	= thin-section computed tomography

in clinical IA lung cancer arising in the periphery of the lung (JCOG 0201).<sup>8</sup> The current study demonstrates the prognosis of the patients who are selected for limited sublobar resection according to the radiologic criteria for noninvasive adenocarcinomas. If we believe that patients with noninvasive adenocarcinomas may be appropriately treated with limited sublobar surgical resection instead of lobectomy, it is crucially important to answer the question, "Can CT be used to select candidates for sublobar resection or those who can benefit from limited sublobar resection?"

In selecting candidates for sublobar resection for early lung adenocarcinomas, however, the preoperative, radiologic prediction of the degree of invasive growth of the tumor has been realized to be a crucial point. Because of the advent of high-resolution CT or TSCT, the radiologic appearance of adenocarcinomas at various stages has been described in detail, and the radiology-pathology correlation has been studied. A localized, nodular lesion characterized by a low-to-moderate increase in CT density that does not obscure lung structures, such as the pulmonary artery/vein and bronchus, is referred to as "ground-glass opacity" (GGO).<sup>3</sup> It has been shown that GGOs are more likely to be an early form of adenocarcinomas, such as bronchioloalveolar carcinoma, adenocarcinoma in situ, or minimally invasive adenocarcinoma. In particular, some GGOs are accompanied by a solid part, and it has been demonstrated that a solid component represents the portion of invasive growth. These observations suggested that the degree of pathologic invasive growth in adenocarcinoma could be quantified according to the proportion of increased solid density in the CT appearance of the lesion.<sup>9</sup>

On the basis of these observations, the JCOG 0201 study was planned to establish radiologic criteria that could be used to identify pathologic early (noninvasive) adenocarcinomas according to the quantification of the solid component in TSCT. For this purpose, a consolidation/tumor (C/T) ratio on TSCT was used, and the hypothesis that a C/T ratio 0.50 or less in cT1a-b ( $\leq 3.0$  cm) in the TNM staging system (7th) indicates a noninvasive pathology was tested with specificity as the primary end point. The pathology-radiology correlation has been described.<sup>8</sup> The present study addresses the evaluation of a radiologic criterion in terms of the prognosis after surgery. If we can combine prognostic and pathologic

features, we may be able to improve the radiologic criteria for defining noninvasive adenocarcinoma.

**PATIENTS AND METHODS****The Japan Clinical Oncology Group 0201 Study**

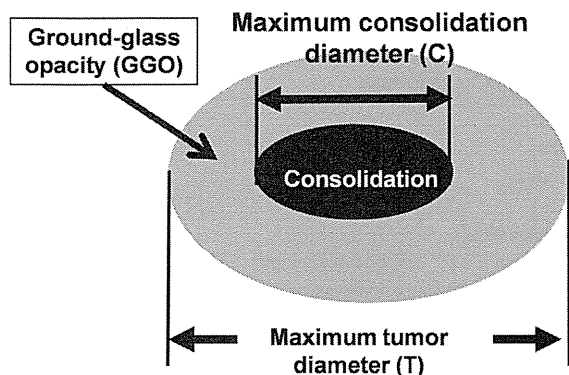
The study design and primary results of the prospective, multi-institutional study entitled JCOG 0201 have been published.<sup>8</sup> The study protocol was approved by the JCOG Clinical Trial Review Committee and the institutional review board of each participating center. The study was originally intended to define the radiologic criteria that indicate the pathologic noninvasiveness of adenocarcinomas arising in the periphery of the lung. If the radiologic selection of early adenocarcinomas with an excellent prognosis could be achieved, candidates for limited resection, not for lobectomy, could be precisely identified. Therefore, the radiologic definition of noninvasive adenocarcinoma needs to be assessed not only according to the radiology-pathology correlation but also according to the prognosis. The current study describes the prognosis of patients with resected adenocarcinoma according to different radiologic criteria. In brief, patients who met the following criteria were enrolled in the JCOG 0201 study: (1) a suspected or diagnosed lung cancer based on the findings from a plain x-ray or CT scan; (2) clinical stage IA (ie, T1N0M0) by thoracic enhanced CT; (3) the center of the tumor located peripherally (ie, in the outer half of the lung field) on CT; (4) measurable in at least 1 dimension in TSCT; (5) age 20 to 75 years; (6) no prior thoracotomy; (7) feasible for pulmonary lobectomy; and (8) obtained written informed consent. Before surgery, all patients underwent a contrast-enhanced, thin-section helical CT scan with 1- to 3-mm collimation, with particular focus on the primary tumor to estimate the size of the entire tumor, including GGO and the solid part (consolidation), where the C/T ratio was defined as a predictor of pathologic early adenocarcinoma (Figure 1). The patients then underwent surgical resection with at least lobectomy and hilar/mediastinal lymph node dissection. In the JCOG 0201 study, the appropriateness of C/T ratios of 0.50 for cT1a-b ( $\leq 3.0$  cm) and 0.25 for cT1a ( $\leq 2.0$  cm) was studied by comparing the C/T ratio and pathology of the resected specimen. The primary end point of the study was the specificity, which was defined as the proportion of patients with radiologically diagnosed invasive lung cancer determined by the central radiologic review among patients with pathologically diagnosed invasive lung cancer. Pathologic noninvasiveness was defined as pN0 disease with neither vascular invasion nor lymphatic permeation on resected specimen.

**Patients**

Between December 2002 and May 2004, we enrolled 811 patients from 31 institutions. There were 357 men and 454 women (age range, 27-75 years; median, 61 years). Of these, 562 patients (69.3%) underwent major lung resection. After 17 patients who were ineligible on the basis of postoperative pathologic findings were excluded, the prognosis of 545 patients (67.2%) was finally studied according to radiologic criteria for noninvasive adenocarcinoma mainly represented by the C/T ratio. The subjects of this study are the same as those in the analysis of pathology-radiology correlation of JCOG0201.

**Statistical Analysis**

The method of sample size calculation has been described.<sup>8</sup> Overall survival was defined as the duration from enrollment to death from any cause. For the patients alive, overall survival was censored at the last visit. Relapse-free survival was defined as the duration from enrollment to first recurrence or death from any cause. For the patients alive and recurrence-free, relapse-free survival was censored at the last visit. The probability of survival was estimated by the Kaplan-Meier method, and survival curves were drawn. The difference in survival between the groups was tested by the log-rank test. All *P* values were 2-sided. All statistical



**FIGURE 1.** Calculation of the C/T ratio to define radiologic noninvasive lung cancer on TSCT. The maximum diameter of consolidation (C) is divided by the maximum tumor diameter (T) to give the C/T ratio. GGO, Ground-glass opacity; C/T, consolidation/tumor; TSCT, thin-section computed tomography.

analyses were performed with SAS software release 9.2 (SAS Institute, Inc, Cary, NC) by the JCOG Data Center.

**RESULTS**

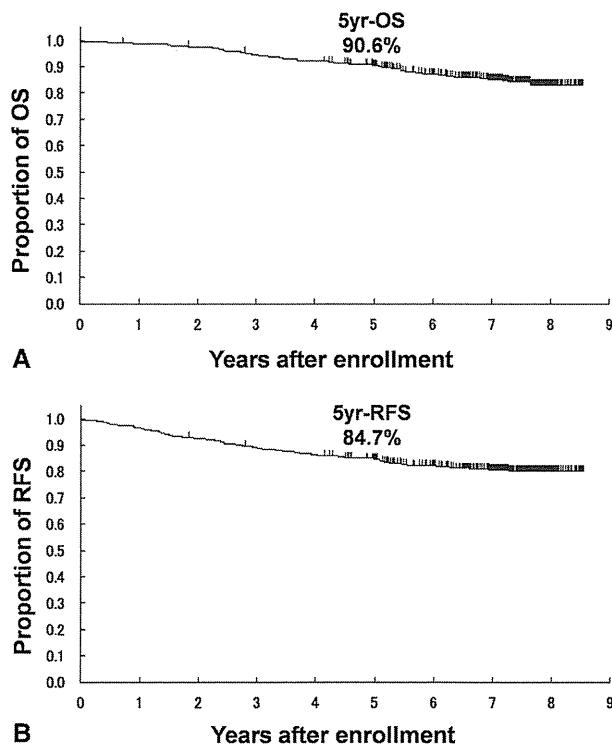
**Prognosis of Patients According to a Consolidation/Tumor Ratio 0.5 or Less (n = 545)**

The patient characteristics of the entire cT1a-b ( $\leq 3.0$  cm) population are shown in Table 1. Among the 545 patients, 233 (42.8%) were men and 312 (57.2%) were women. The median age was 62 years (range, 35-75 years). The median follow-up period among overall patients was 7.1 years after surgery (range, 0-8.6 years). The overall and relapse-free

**TABLE 1. Patient characteristics of the entire cT1a-b ( $\leq 3.0$  cm) population (n = 545)**

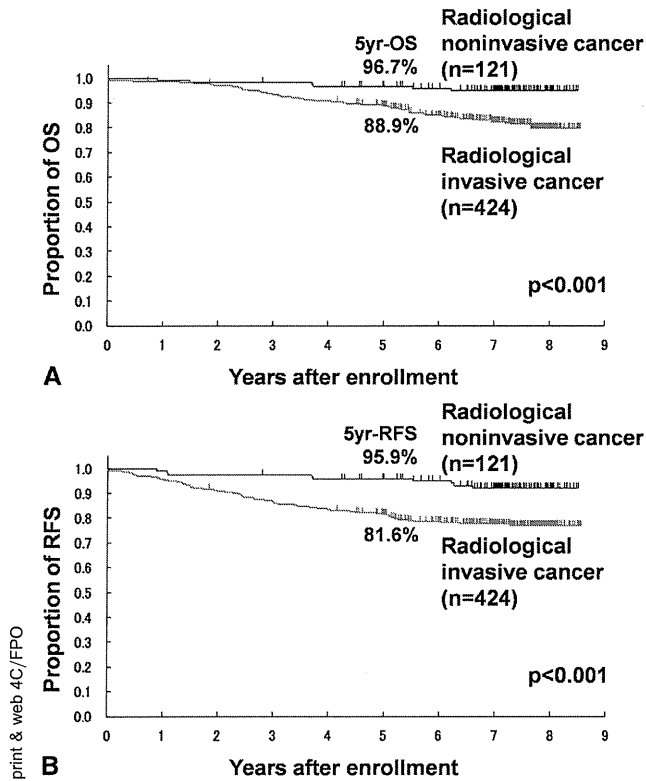
Characteristics	No. of patients (%)
Gender	
Men	233 (42.8)
Women	312 (57.2)
Age (y)	
Median (range)	62 (35-75)
Maximum tumor diameter on TSCT*	
$\leq 2.0$ cm	289 (53.0)
$>2.0$ -3.0	254 (46.6)
Unknown	2 (0.4)
C/T ratio on TSCT* and final pathology†	
$\leq 0.5$ (radiologically noninvasive)	121 (22.2)
Pathologically noninvasive	115 (21.1)
Pathologically invasive	6 (1.1)
$>0.5$ (radiologically invasive)	424 (77.8)
Pathologically noninvasive	263 (48.3)
Pathologically invasive	161 (29.5)

TSCT, Thin-section computed tomography; C/T, consolidation/tumor. \*Maximum tumor diameter and a C/T ratio on TSCT were both evaluated by a central radiologic review board. †Patients with adenocarcinoma that was diagnosed at the time of surgery were eligible, and 16 patients with a different final pathologic diagnosis were included in the pathologically invasive group.



**FIGURE 2.** Overall (A) and relapse-free (B) survival curves for the entire group (cT1a-b,  $\leq 3.0$  cm, n = 545). OS, Overall survival; RFS, relapse-free survival.

survival curves of the cT1a-b ( $\leq 3.0$  cm) population are presented in Figure 2, and the 5-year overall and relapse-free survivals were 90.6% and 84.7%, respectively. Among the 545 adenocarcinomas, when a C/T ratio 0.5 or less in cT1a-b ( $\leq 3.0$  cm) was used as a radiologic criterion for noninvasive cancer, 121 adenocarcinomas (22.2%) were diagnosed as noninvasive and 424 adenocarcinomas (77.8%) were diagnosed as invasive. Among the 121 radiologic noninvasive adenocarcinomas, 115 (95.0%) were precisely determined to be pathologic noninvasive cancer. Among the 424 radiologic invasive adenocarcinomas, 161 (38.0%) were precisely determined to be pathologic invasive cancer. Therefore, the specificity and sensitivity were 96.4% (95% confidence interval [CI], 92.3-98.7) and 30.4% (95% CI, 25.8-35.3), respectively. The overall survival curves for radiologic noninvasive cancer (n = 121) and invasive cancer (n = 424) are presented in Figure 3, A. The 5-year overall survivals for noninvasive cancer and invasive cancer were 96.7% and 88.9%, respectively, and the difference in overall survival was statistically significant ( $P < .001$ ). The relapse-free survival curves for radiologic noninvasive cancer (n = 121) and invasive cancer (n = 424) are presented in Figure 3, B. The 5-year relapse-free survivals for noninvasive and invasive cancer were 95.9% and 81.6%, respectively, and the difference in relapse-free survival was statistically significant ( $P < .001$ ).



**FIGURE 3.** Overall (A) and relapse-free (B) survival curves for radiologically noninvasive (n = 121) and invasive (n = 424) adenocarcinomas based on a C/T ratio of 0.50 or less in cT1a-b ( $\leq 3.0$  cm) for noninvasiveness on TSCT. The differences in overall and relapse-free survival are statistically significant ( $P < .001$  and  $< .001$ , respectively). OS, Overall survival; RFS, relapse-free survival; C/T, consolidation/tumor; TSCT, thin-section computed tomography.

**Prognosis of Patients According to a Consolidation/Tumor Ratio 0.25 or Less for cT1a Adenocarcinomas ( $\leq 2.0$  cm in Size) (n = 289)**

The patient characteristics of this population are shown in Table 2. Among the 289 patients, 129 (44.6%) were men and 160 (55.4%) were women. The median age was 61 years (range, 35-75 years). The median follow-up period among overall patients was 7.1 years after surgery (range, 0-8.5 years). The overall and relapse-free survival curves for the cT1a ( $\leq 2.0$  cm) population (n = 289) are presented in Figure 4, and the 5-year overall and relapse-free survivals were 93.0% and 88.9%, respectively. Among the 289 cT1a ( $\leq 2.0$  cm) adenocarcinomas, when a C/T ratio 0.25 or less was used as a radiologic criterion for noninvasive cancer, 35 adenocarcinomas (12.1%) were diagnosed as noninvasive and 254 adenocarcinomas (87.9%) were diagnosed as invasive. Among the 35 radiologic noninvasive adenocarcinomas, 34 (97.1%) were precisely determined to be pathologic noninvasive cancer. Among the 254 radiologic invasive adenocarcinomas, 78 (30.7%) were precisely determined to be pathologic invasive cancer. Therefore, the

**TABLE 2.** Patient characteristics of cT1a ( $\leq 2.0$  cm) population (n = 289)

Characteristics	No. of patients (%)
Gender	
Men	129 (44.6)
Women	160 (55.4)
Age (y)	
Median (range)	61 (35-75)
C/T ratio on TSCT* and final pathology†	
$\leq 0.25$ (radiologically noninvasive)	35 (12.1)
Pathologically noninvasive	34 (11.8)
Pathologically invasive	1 (0.3)
$> 0.25$ (radiologically invasive)	254 (87.9)
Pathologically noninvasive	176 (60.9)
Pathologically invasive	78 (27.0)

C/T, Consolidation/tumor; TSCT, thin-section computed tomography. \*Maximum tumor diameter and a C/T ratio on TSCT were both evaluated by a central radiologic review board. †Patients with adenocarcinoma that was diagnosed at the time of surgery were eligible, and the patients with a different final pathologic diagnosis were included in the pathologically invasive group.

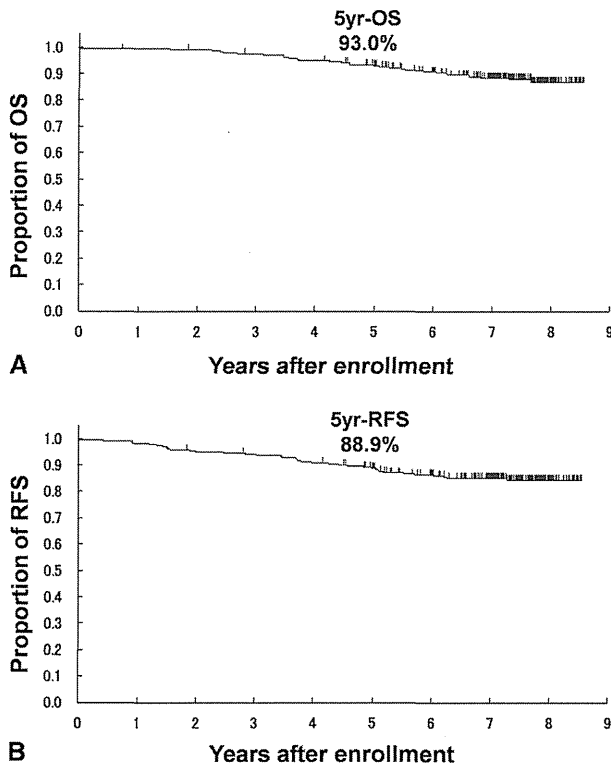
specificity and sensitivity were 98.7% (95% CI, 93.2-100.0) and 16.2% (95% CI, 11.5-21.9), respectively. The overall survival curves for radiologic noninvasive cancer (n = 35) and invasive cancer (n = 254) are presented in Figure 5, A. The 5-year overall survivals for noninvasive cancer and invasive cancer were 97.1% and 92.4%, respectively, and the difference in overall survival was not statistically significant ( $P = .259$ ). The relapse-free survival curves for radiologic noninvasive cancer (n = 35) and invasive cancer (n = 254) are presented in Figure 5, B. The 5-year relapse-free survivals for noninvasive and invasive cancer were 97.1% and 87.7%, respectively, and the difference in relapse-free survival was not statistically significant ( $P = .106$ ).

**Prognosis of Patients With cT1b Adenocarcinomas ( $> 2.0$ - $3.0$  cm in Size) (n = 254) According to a Consolidation/Tumor Ratio 0.5 or Less**

Two patients with unknown preoperative tumor size were excluded. Among the 254 patients, 104 (40.9%) were men and 150 (59.1%) were women. The median age was 62 years (range, 37-75 years). The median follow-up period among overall patients was 7.0 years after surgery (range, 0-8.5 years). The overall and relapse-free survivals for the cT1b ( $> 2.0$ - $3.0$  cm) population were 87.8% and 79.9%, respectively. When a C/T ratio 0.5 or less was used as a radiologic criterion for noninvasive cancer, 54 adenocarcinomas (21.3%) were diagnosed as noninvasive and 200 adenocarcinomas (78.7%) were diagnosed as invasive. The overall survival curves for radiologic noninvasive cancer (n = 54) and invasive cancer (n = 200) are presented in Figure 6, A. The 5-year overall survivals for noninvasive cancer and invasive cancer were 96.3% and 85.5%, respectively, and the difference in overall survival was statistically significant

GTS

print & web 4C/FPO

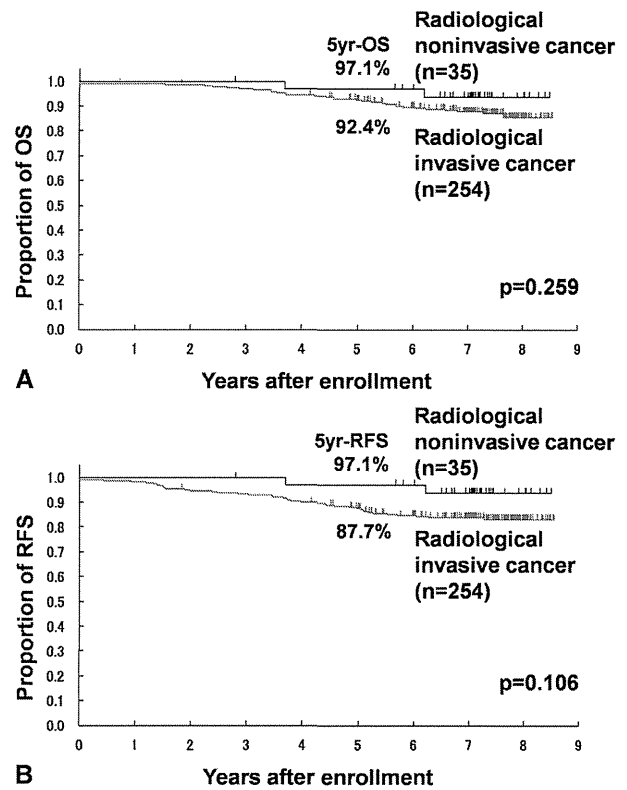


**FIGURE 4.** Overall (A) and relapse-free (B) survival curves for the cT1a ( $\leq 2.0$  cm) group ( $n = 289$ ). OS, Overall survival; RFS, relapse-free survival.

( $P = .003$ ). The relapse-free survival curves for radiologic noninvasive cancer ( $n = 54$ ) and invasive cancer ( $n = 200$ ) are presented in Figure 6, B. The 5-year relapse-free survivals for noninvasive and invasive cancer were 94.4% and 76.0%, respectively, and the difference in relapse-free survival was statistically significant ( $P = .003$ ).

**DISCUSSION**

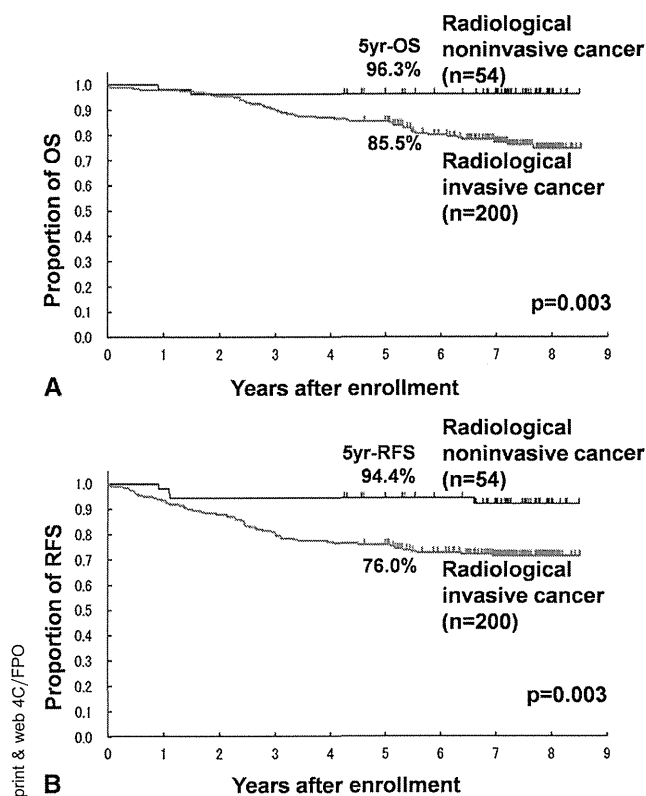
During the past 80 years, the surgical mode of pulmonary resection for lung cancer has evolved from pneumonectomy to lobectomy.<sup>10,11</sup> Currently, resection of the entire tumor-bearing lobe is being adopted as the standard mode of surgical resection for lung cancer. During this period, attempts have been made to minimize the resection through lobectomy to limited sublobar resection. Most importantly, the North American Lung Cancer Study Group conducted a prospective, randomized trial that compared limited resection with lobectomy for stage I lung cancer.<sup>12</sup> The principal finding in that study was a 3-fold increase in local recurrence (17.2% vs 6.4%) in patients who had sublobar resection and a 2.4-fold increase in those with segmental resection. A 30% increase in the overall death rate and a 50% increase in the rate of death with cancer in patients with limited resection were also observed compared with those with lobectomy. Therefore, it was concluded that lobectomy should



**FIGURE 5.** Overall (A) and relapse-free (B) survival curves for radiologically noninvasive ( $n = 35$ ) and invasive ( $n = 254$ ) adenocarcinomas based on a C/T ratio of 0.25 or less in cT1a ( $\leq 2.0$  cm) for noninvasiveness on TSCT. The differences in overall and relapse-free survival are not statistically significant ( $P = .259$  and  $.106$ , respectively). OS, Overall survival; RFS, relapse-free survival; C/T, consolidation/tumor; TSCT, thin-section computed tomography.

still be considered the surgical procedure of choice for peripheral T1N0 non-small cell lung cancer. However, present-day critiques of this study are arising with regard to the marginal prognostic significance, poor preoperative workup for metastasis, slow accrual rate of the study, absence of data on pulmonary function (no demonstration of superiority in pulmonary function for lesser resection), and the notion that this study is outdated.

Despite the results of the North American Lung Cancer Study Group study, many nonrandomized studies have been published, and their results suggested that an equivalent prognosis could be achieved with limited sublobar resection for selected non-small cell lung cancer as with lobectomy.<sup>13-18</sup> Especially for earlier forms of noninvasive or minimally invasive adenocarcinoma such as bronchioloalveolar carcinoma, it has been shown that these cases present with a GGO appearance on TSCT and could be treated with limited sublobar resections, such as wide wedge resection and segmentectomy.<sup>13-18</sup> Because of the accumulation of excellent prognoses by limited resection in nonrandomized studies, surgeons require a fair comparison of lobectomy



**FIGURE 6.** Overall (A) and relapse-free (B) survival curves for radiologically noninvasive ( $n = 54$ ) and invasive ( $n = 200$ ) adenocarcinomas based on a  $C/T$  ratio  $\leq 0.5$  in cT1b ( $>2.0$ - $3.0$  cm) for noninvasiveness on TSCT. The differences in overall and relapse-free survival are statistically significant ( $P = .003$  and  $.003$ , respectively). OS, Overall survival; RFS, relapse-free survival;  $C/T$ , consolidation/tumor; TSCT, thin-section computed tomography.

and limited resection according to appropriate radiologic criteria for patient selection.

The radiologic criteria for noninvasive adenocarcinoma need to be evaluated by both pathologic and prognostic aspects. The radiology-pathology correlation has been studied in detail in JCOG0201, and the results have been published.<sup>8</sup> Briefly, JCOG 0201 failed to demonstrate that a  $C/T$  ratio 0.5 or less in T1a-b is precisely predictive of pathologic noninvasiveness. The specificity and sensitivity for these criteria were 96.4% (95% CI, 92.3-98.7) and 30.4% (95% CI, 25.8-35.3), respectively, and they did not reach the hypotheses in the JCOG 0201 study that the lower limit for 95% CI of specificity exceeds 97%. However, according to an exploratory study, a  $C/T$  ratio 0.25 or less in cT1a ( $\leq 2.0$  cm) showed a specificity of 98.7% and a sensitivity of 16.2%, which was more precise for indicating noninvasive pathologic features. On the basis of these results, we recognized that a  $C/T$  ratio 0.25 or less in cT1a ( $\leq 2.0$  cm) on TSCT is a better indicator of a noninvasive histology as early adenocarcinoma than a  $C/T$  ratio 0.50 or less in cT1a-b ( $\leq 3.0$  cm). In this additional study

of JCOG 0201, we looked at the prognoses obtained by these 2 radiologic criteria and focused on whether noninvasive adenocarcinomas defined by these 2 criteria could indicate a good prognosis as early adenocarcinoma.

In contrast to the results regarding the radiology-pathology correlation in the JCOG 0201 study, superb prognoses were obtained for noninvasive adenocarcinomas according to both of these criteria: The 5-year overall survivals for a  $C/T$  ratio 0.50 or less in cT1a-b ( $\leq 3.0$  cm) and a  $C/T$  ratio 0.25 or less in cT1a ( $\leq 2.0$  cm) were 96.7% and 97.1%, respectively. Although our previous report stated that a  $C/T$  ratio 0.25 or less in cT1a ( $\leq 2.0$  cm) was an appropriate indicator to select patients with noninvasive lung adenocarcinomas suitable for limited sublobar resection,<sup>8</sup> these results indicate that even with a generous radiologic criterion on TSCT (a  $C/T$  ratio  $\leq 0.50$  in cT1a-b), we can precisely select a group of patients with early adenocarcinomas who have an excellent prognosis. For these patients, it is considered that limited sublobar resection achieves a prognosis that is almost the same as that with lobectomy and a better preservation of the lung parenchyma. In terms of the postoperative prognosis, this analysis indicates that noninvasive adenocarcinomas can be properly selected on TSCT using radiologic criteria of a  $C/T$  ratio of 0.50 or 0.25.

There is a caution regarding the excellent prognoses of the patients with noninvasive adenocarcinomas in this study. Patients included in the JCOG 0201 study underwent lobectomy and hilar/mediastinal lymph node dissection, which is usually indicated for any type of resectable lung cancer as a radical resection. The prognoses in this study were achieved by such radical resection; therefore, the same prognoses are not warranted for these tumors if they are resected with limited sublobar resections, although this was suggested by previous studies with case series.<sup>13-18</sup> We should still be prudent in addressing the excellent prognoses of early adenocarcinomas with surgical resection other than lobectomy.

On the basis of these results, 2 prospective, collaborative studies between JCOG and the West Japan Oncology Group, JCOG0804/WJOG4507L (UMIN-CTR [www.umin.ac.jp/ctr/] No. UMIN000002008) and JCOG0802/WJOG4607L (UMIN-CTR No.UMIN000002317), are under way on peripherally located adenocarcinomas of the lung.<sup>19</sup> In these studies, a radiologic criterion of a  $C/T$  ratio 0.25 or less in cT1a is used to define noninvasive adenocarcinomas. For radiologic noninvasive adenocarcinomas with a tumor diameter of 2 cm or less, a phase II study with 1 experimental arm (JCOG0804/WJOG4507L) is under way in which tumors are resected with a wide wedge resection. As of March 2012, the target number of accrual (330 patients) was reached, and maturation of follow-up data on recurrence and prognosis is awaited. For radiologic invasive adenocarcinomas with a tumor diameter 2.0 cm or less and

a C/T ratio greater than 0.25, a prospective, randomized phase III study (JCOG0802/WJOG4607L) between lobectomy and segmentectomy in a noninferiority setting is under way. The primary and key secondary end points are overall survival and postoperative pulmonary function, respectively. If the prognosis of those undergoing segmentectomy is not inferior to that of those undergoing lobectomy and the pulmonary function of those undergoing segmentectomy is significantly better than that of those undergoing lobectomy, we will conclude that segmentectomy should be the standard mode of pulmonary resection for a peripherally located radiologic invasive adenocarcinoma with a diameter of 2.0 cm or less and a C/T ratio greater than 0.25. The target number of patients is 1100, and accrual is under way. This study will clarify the pathologic and survival outcomes of the patients with cT1a ( $\leq 2.0$  cm) tumor and a C/T ratio ranging from 0.25 to 0.5, and might validate the radiologic definition of a C/T ratio 0.5 or less for noninvasive lung adenocarcinoma among the cT1a ( $\leq 2.0$  cm) group. In North America, a similar study entitled Cancer and Leukemia Group B 140503 is also under way, in which the prognosis and preservation of pulmonary function is compared between lobectomy and limited resection in a noninferiority setting.<sup>20,21</sup> The current survival analysis showed that noninvasive adenocarcinomas indicative of limited resection could be selected by the size of 3 cm or less and a C/T ratio 0.5 or less. Even the patients with cT1b tumors ( $>2$ -3 cm) may be candidates for limited resection if their preoperative C/T ratio is 0.5 or less. For cT1b tumors, segmentectomy but not wide wedge resection should be considered as an appropriate limited resection to obtain adequate surgical margins. Future prospective study will be needed to investigate the clinical significance of intentional segmentectomy for such a population.

## CONCLUSIONS

Despite the finding that a noninvasive pathology is better predicted with a C/T ratio 0.25 or less on TSCT in cT1a ( $\leq 2.0$  cm) than with 0.50 or less in cT1a-b ( $\leq 3.0$  cm), both of these radiologic criteria could identify a group of patients with an excellent prognosis, with a 5-year overall survival of approximately 97%. These criteria can be used to select patients with peripherally located adenocarcinomas in whom a limited resection, such as wide wedge resection or segmentectomy, might be safely indicated.

The authors thank Mieko Imai, BSc, and Tomohisa Furuya, BSc, for support with data management, and Junki Mizusawa, MSc, for the statistical analysis.

## References

- Noguchi M, Morikawa A, Kawasaki M, Matsuno Y, Yamada T, Hirohashi S, et al. Small adenocarcinoma of the lung. Histologic characteristics and prognosis. *Cancer*. 1995;75:2844-52.
- Koike T, Terashima M, Takizawa T, Watanabe T, Kurita Y, Yokoyama A. Clinical analysis of small-sized peripheral lung cancer. *J Thorac Cardiovasc Surg*. 1998; 115:1015-20.
- Suzuki K, Asamura H, Kusumoto M, Kondo H, Tsuchiya R. "Early" peripheral lung cancer: prognostic significance of ground glass opacity on thin-section computed tomographic scan. *Ann Thorac Surg*. 2002;74:1635-9.
- Suzuki K, Kusumoto M, Watanabe S, Tsuchiya R, Asamura H. Radiologic classification of small adenocarcinoma of the lung: radiologic-pathologic correlation and its prognostic impact. *Ann Thorac Surg*. 2006;81:413-9.
- Travis WD, Garg K, Franklin WA, Wistuba II, Sabloff B, Noguchi M, et al. Evolving concepts in the pathology and computed tomography imaging of lung adenocarcinoma and bronchioloalveolar carcinoma. *J Clin Oncol*. 2005; 23:3279-87.
- Travis WD, Brambilla E, Noguchi M, Nicholson A, Geisinger K, Yatabe Y, et al. International Association for the Study of Lung Cancer/American Thoracic Society/European Respiratory Society international multidisciplinary classification of lung adenocarcinoma. *J Thorac Oncol*. 2011;6:144-85.
- Van Schil P, Asamura H, Rusch VW, Mitsudomi T, Tsuboi M, Brambilla E, et al. Surgical implications of the new IASLC/ATS/ERS adenocarcinoma classification. *Eur Respir J*. 2012;39:478-86.
- Suzuki K, Koike T, Asakawa T, Kusumoto M, Asamura H, Nagai K, et al. A prospective radiological study of thin-section computed tomography to predict pathological noninvasiveness in peripheral clinical IA lung cancer (Japan Clinical Oncology Group 0201). *J Thorac Oncol*. 2011;6:751-6.
- Kodama K, Higashiyama M, Yokouchi H, Takami K, Kuriyama K, Mano M, et al. Prognostic value of ground-glass opacity found in small lung adenocarcinoma on high-resolution CT scanning. *Lung Cancer*. 2001;33:17-25.
- Cahan WG, Watson WL, Pool JL. Radical pneumonectomy. *J Thorac Surg*. 1951; 22:449-73.
- Cahan WG. Radical lobectomy. *J Thorac Cardiovasc Surg*. 1960;39:555-72.
- Ginsberg RJ, Rubinstein LV. Randomized trial of lobectomy versus limited resection for T1 N0 non-small cell lung cancer. Lung Cancer Study Group. *Ann Thorac Surg*. 1995;60:615-22.
- Watanabe S, Watanabe T, Arai K, Kasai T, Haratake J, Urayama H. Results of wedge resection for focal bronchioloalveolar carcinoma showing pure ground-glass attenuation on computed tomography. *Ann Thorac Surg*. 2002;73: 1071-5.
- Yoshida J, Nagai K, Yokose T, Nishimura M, Kakinuma R, Ohmatsu H, et al. Limited resection trial for pulmonary ground-glass opacity nodules: fifty-case experience. *J Thorac Cardiovasc Surg*. 2005;129:991-6.
- Okada M, Koike T, Higashiyama M, Yamato Y, Kodama K, Tsubota N. Radical sublobar resection for small-sized non-small cell lung cancer: a multicenter study. *J Thorac Cardiovasc Surg*. 2006;132:769-75.
- El-Sherif A, Gooding WE, Santos R, Pettiford B, Ferson PF, Fernando HC, et al. Outcome of sublobar resection versus lobectomy for stage I non-small cell lung cancer: a 13-year analysis. *Ann Thorac Surg*. 2006;82:408-16.
- Schuchert MJ, Pettiford BL, Keeley S, D'Amato TA, Kilic A, Close J, et al. Anatomic segmentectomy in the treatment of stage I non-small cell lung cancer. *Ann Thorac Surg*. 2007;84:926-33.
- Wolf AS, Richards WG, Jaklitsch MT, Gill R, Chirieac LR, Colson YL, et al. Lobectomy versus sublobar resection for small (2 cm or less) non-small cell lung cancers. *Ann Thorac Surg*. 2011;92:1819-23.
- Nakamura K, Saji H, Nakajima R, Okada M, Asamura H, Shibata T, et al. A phase III randomized trial of lobectomy versus limited resection for small-sized peripheral non-small cell lung cancer (JCOG0802/WJOG4607L). *Jpn J Clin Oncol*. 2010;40:271-4.
- Swanson SJ. Video-assisted thoracic surgery segmentectomy: the future of surgery for lung cancer? *Ann Thorac Surg*. 2010;89:S2096-7.
- Blasberg JD, Pass HI, Donington JS. Sublobar resection: a movement from the Lung Cancer Study Group. *J Thorac Oncol*. 2010;5:1583-93.

# Gene expression profiling and molecular pathway analysis for the identification of early-stage lung adenocarcinoma patients at risk for early recurrence

HISASHI SAJI<sup>1</sup>, MASAHIRO TSUBOI<sup>1</sup>, YOSHIHISA SHIMADA<sup>1</sup>, YASUFUMI KATO<sup>1</sup>,  
WAKAKO HAMANAKA<sup>1</sup>, YUJIN KUDO<sup>1</sup>, KOICHI YOSHIDA<sup>1</sup>, JUN MATSUBAYASHI<sup>2</sup>,  
JITSUO USUDA<sup>1</sup>, TATSUO OHIRA<sup>1</sup> and NORIHIKO IKEDA<sup>1</sup>

<sup>1</sup>Division of Thoracic Surgery, Department of Surgery, and <sup>2</sup>Department of Anatomic Pathology,  
Tokyo Medical University, Shinjuku-ku, Tokyo 160-0023, Japan

Received November 2, 2012; Accepted January 16, 2013

DOI: 10.3892/or.2013.2332

**Abstract.** Clinicohistopathological staging is insufficient to predict disease progression and clinical outcome in lung carcinoma. Based on the results of the principal component analysis of 24 samples of early-stage lung adenocarcinoma, two subgroups were identified within the early-relapse group. The histological classification of all samples of group A was poorly differentiated, whereas one out of three in group B was poorly differentiated. DAVID functional annotation analysis revealed that the molecular pathways enriched in group A included those associated with cell adhesion molecules (CAMs), cell cycle and antigen processing and presentation, whereas those in group B included CAMs, T cell receptor signaling, cytokine-cytokine receptor interaction, toll-like receptor signaling, chemokine signaling, primary immunodeficiency and natural killer cell-mediated cytotoxicity. The CAM pathway was enriched in both groups. This comprehensive gene expression and functional pathway analysis identified a distinct molecular pathway, CAMs, that correlated with the early relapse of patients with early-stage lung adenocarcinoma.

## Introduction

Lung cancer is the leading cause of cancer-related deaths in Japan and also worldwide in most developed countries. Every year, ~60,000 individuals succumb to lung cancer in Japan, and the number is increasing rapidly. Even in early-stage lung cancer, ~40% of patients with stage I and II non-small cell lung cancer (NSCLC) die from recurrent disease within 5 years despite complete resection (1,2). The precise diagnosis

and classification of cancers are critical for the selection of appropriate therapies. However, since no reliable clinical or molecular predictors are currently available, it is difficult to select high-risk patients who require more aggressive therapies such as adjuvant chemotherapy.

Genetic abnormalities that exist in a certain population of early-stage lung cancer patients possibly induce aggressive phenotypes that demonstrate rapid tumor growth, persistent invasiveness and a high potential for distant metastasis. The expression of a number of genes is altered in cancer cells due to mutations, deletions, amplifications, and either the upregulation or downregulation of mRNA transcription. Comprehensive DNA microarray analysis of gene expression patterns is a powerful tool that permits the simultaneous evaluation of a large number of genes in cancer cells (3,4). Microarray gene expression profiling has recently been used to define prognostic signatures in patients with NSCLC (5-11). However, information concerning gene expression profiling and molecular pathways relating to the outcomes of patients with early-stage lung cancer has yet to be well characterized.

Adenocarcinoma is currently the predominant histological subtype of NSCLC. The results of several expression profiling studies have demonstrated that the expression profiles are distinctive and recapitulate the known histological subtypes (5-7). As a significant proportion of patients relapse within 2 years, identification of early-stage patients with a poor prognosis could delineate the appropriate candidates for adjuvant therapy. The present study aimed to identify a novel prognostic signature in early-stage lung adenocarcinoma using cDNA microarray and bioinformatics analysis.

## Materials and methods

**Patient samples.** Intraoperatively, immediately upon removal of a lung lobe in which a primary lung carcinoma was located, a 500-mg sample of tumor tissue was cut and immediately immersed in liquid nitrogen and stored at -80°C until use, as previously reported (12). We studied frozen specimens of lung cancer tissue from 64 randomly selected patients who underwent complete resection of stage I or II NSCLC lesions

*Correspondence to:* Dr Hisashi Saji, Division of Thoracic Surgery, Department of Surgery, Tokyo Medical University, 6-7-1 Nishishinjuku, Shinjuku-ku, Tokyo 160-0023, Japan  
E-mail: saji-q@ya2.so-net.ne.jp

**Key words:** lung adenocarcinoma, prognostic factor, microarray, molecular pathway analysis, early relapse, cell adhesion molecule



at Tokyo Medical University, Tokyo, Japan from May 2003 to December 2006. Tumor tissues were processed by the Human Tissue Bank section at our department according to standard operating procedures and protocols. Briefly, frozen tissue samples at  $-80^{\circ}\text{C}$  were pulverized, and total cellular RNA was collected from each flash-frozen sample using TRIzol RNA isolation reagent (Invitrogen). Total RNA was processed with an RNeasy Mini kit (Qiagen). *In vitro* transcription-based RNA amplification was then performed on at least  $8\ \mu\text{g}$  of total RNA from each sample. The RNA quality was assessed using a bioanalyzer (model 2100, Agilent). According to the results from the RNA quality assay, 24 lung adenocarcinoma samples were selected as our dataset.

**Microarray analysis.** Complementary DNA was synthesized using the T7-(dT)24 primer: 59-GGCCAGTGAATTGTAATACGACTCACTATAGGGAGGCGG-(dT)24-39. The cDNA was processed using phase-lock gel phenol/chloroform extraction (#E0032005101, Fisher). Next, *in vitro* transcriptional labeling with biotin was performed using the Enzo BioArray kit (#900182, Affymetrix). The resulting cRNA was processed again using the RNeasy Mini kit. Labeled cRNA was hybridized to an Affymetrix GeneChip (Human Genome-133 Plus 2.0 Array) according to the manufacturer's instructions. The raw fluorescence intensity data within the CEL files were preprocessed with the robust multichip average algorithm, as implemented with the R packages from Bioconductor. This algorithm analyzes the microarray data in three steps: a background adjustment, quantile normalization, and finally summation of the probe intensities for each probe set using a log scale linear additive model for the log transform of (background corrected, normalized) PM intensities.

**Data analysis.** Affymetrix Human Genome-U133 Plus 2.0 GeneChip data, quantified with MAS5, were imported into the Subio Platform (Subio Inc., Tokyo, Japan). Signals  $<1$  were replaced with 1, log<sub>2</sub> transformed, and then mean-subtracted by each probe set to obtain the log ratio against the average of the expression patterns. No normalization was applied.

Samples were classified into two groups, recurrence-positive and recurrence-negative. Probe sets in both groups whose detection values were absent in half of the samples were removed. At this point, 28674 out of 54682 probe sets remained. Finally, unvarying probe sets, whose log ratios were between  $-1$  and  $+1$  in all samples, were filtered out to obtain the final quality controlled probe sets (24420).

Principal component analysis (PCA) was applied to the log ratio data of quality controlled genes. We recognized that the samples in the recurrence-positive group might be distinguishable as PC1 score negative (A) and positive (B) subgroups.

We extracted the differentially expressed genes (DEGs) for both A and B subgroups. We defined DEGs for A as being  $>4$ -fold upregulated or downregulated compared with the average of the recurrence-negative group, and having Mann-Whitney U-test P-values of  $<0.05$  between the recurrence-negative group and the recurrence-positive A subgroup. A total of 721 probe sets were selected as DEG for A. Similarly, we obtained 274 probe sets as DEGs for B, which showed a  $>2$ -fold change and P-values of  $<0.05$  by the Mann-Whitney U-test, as compared with the recurrence-negative group.

**Biological analysis of the DEG lists.** We searched 171 and 33 enriched GO terms for DEGs determined for the A and B group, respectively, with the annotation analysis plug-in of the Subio platform (data not shown). We further analyzed these lists with the DAVID functional annotation web tool (<http://david.abcc.ncifcrf.gov>) and obtained the lists of enriched KEGG pathways (Tables I and II).

**Ethical considerations.** Written informed consent was obtained from the patients for tissue procurement prior to surgery and their medical records were maintained according to protocols approved by the Institutional Review Board of Tokyo Medical University (no. 965).

## Results

**Patient information.** As shown in Table I, there were 14 male and 10 female patients enrolled in this study. The mean age was 65.3 years (range, 42-76). The histological classifications were all adenocarcinoma; 14 were well/moderately differentiated and 10 were poorly differentiated. The distribution of clinical staging demonstrated that most of the patients were early-stage IAB cases. Histological differentiation was significantly correlated with early recurrence ( $P=0.026$ ), whereas no significant correlations were found among pathological stages IA, IB and IIA ( $P=0.061$ ).

**Correlation of patient outcome with putative adenocarcinoma classes.** We aimed to ascertain whether lung cancer patient outcome correlates with the subclasses of lung adenocarcinomas defined herein. Based on the results of PCA of this series, two adenocarcinoma subgroups were identified within the early-relapse group of early-stage adenocarcinoma cases, which differentially expressed a broad range of gene patterns (Fig. 1).

Statistical analysis of the microarray data, when compared with the non-early-relapse group C, revealed 723 genes with significant differences in expression in the samples of group A, whereas 274 genes showed significant differences in expression in samples of group B. We searched 171 and 33 altered GO terms for DEGs in the A and B lists, respectively, with the annotation analysis plug-in of the Subio platform (data not shown).

The histological classification of all samples of group A was poorly differentiated, whereas only one out of three cases in group B was classified as poorly differentiated. In this series of early-stage IA-IIA adenocarcinomas, no papillary or bronchio-alveolar carcinoma subtypes were associated with recurrence within 2 years after complete resection.

**Biological function analysis.** Tables II and III document the 16 and 17 enriched pathways in groups A and B, respectively. Clusters of genes related to oncological or immunological functional signaling were found enriched in group A as were pathways such as cell adhesion molecules (CAMs), cell cycle, and antigen processing and presentation. In group B, the pathways included CAMs, T cell receptor signaling, cytokine-cytokine receptor interaction, toll-like receptor signaling, chemokine signaling pathway, primary immunodeficiency and natural killer cell mediated cytotoxicity. The CAM pathway was found to be enriched in both groups A and B.

Table I. Patient information regarding the 24 adenocarcinoma samples.

Variables	Total samples	Early recurrence		P-value
		Positive (n=8)	Negative (n=16)	
Median age (range)	65.3 (42-76)	67.0 (55-76)	64.5 (42-76)	0.551
Gender				0.143
Male	14	3	11	
Female	10	5	5	
Histological differentiation				0.026 <sup>a</sup>
Well/moderate	14	2	11	
Poor	10	6	4	
p-Stage				0.061
IA	14	2	12	
IB	8	5	3	
IIA	2	1	1	

<sup>a</sup>Significant difference.

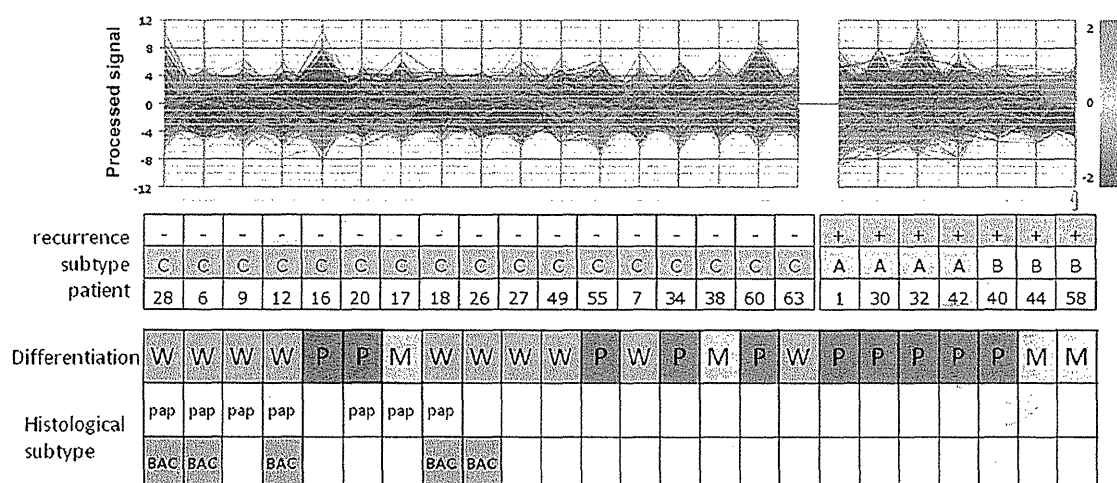


Figure 1. Principal component analysis correlated with differentiation and histological subtype. W, well differentiated; M, moderately differentiated; P, poorly differentiated; BAC, bronchio-alveolar carcinoma; pap, papillary carcinoma.

## Discussion

The development of microarray technologies has made it possible to quantitate the expression of many thousands of genes simultaneously in a given sample (3,4). Comprehensive analysis of gene expression patterns in individual tumors should, therefore, provide detailed molecular portraits that can facilitate tumor classification. Several expression profiling studies concluded that expression profiles are distinctive and recapitulate known histological subtypes (5-7).

Genomic methods offer promise for the classification of human lung carcinomas. In one previous study, it is important to note that the performance of the adenocarcinoma classifier showed a better predictive accuracy than the squamous cell lung carcinoma (SCC) classifier (adenocarcinoma AUC = 0.83, SCC AUC = 0.68). This could have been due to the hetero-

geneity of the SCC samples as indicated by the two distinct subgroups showing differing clinical outcomes in this tumor type (9). Multiple independent studies of mRNA expression profiles in lung adenocarcinoma have proven highly reproducible. Analyses of the relationship between expression profiles and tumor development and differentiation, the presence or absence of specific pathogenic mutations, patient prognosis and survival after surgical treatment, and specific histopathology all appear to be promising (13).

Adenocarcinoma is currently the predominant histological subtype of NSCLC. NSCLC composes the majority of bronchogenic carcinoma cases with a lesser fraction being small-cell lung carcinomas. The three main subtypes of NSCLC are adenocarcinoma (60%), SCC (25%) and large-cell cancer (5%). Adenocarcinoma has replaced SCC as the most frequent histological subtype over the last 25 years (1,2,14). Therefore,

Table II. Enriched pathways in group A.

Category	Term	Count	%	P-value	Benjamini
KEGG_PATHWAY	Asthma	8	1.5	0.000019	0.0024
KEGG_PATHWAY	Allograft rejection	8	1.5	0.000085	0.0053
KEGG_PATHWAY	Graft-versus-host disease	8	1.5	0.00014	0.0061
KEGG_PATHWAY	Cell adhesion molecules (CAMs)	14	2.5	0.00017	0.0052
KEGG_PATHWAY	Type I diabetes mellitus	8	1.5	0.00023	0.0059
KEGG_PATHWAY	Intestinal immune network for IgA production	8	1.5	0.00062	0.013
KEGG_PATHWAY	Autoimmune thyroid disease	8	1.5	0.0008	0.014
KEGG_PATHWAY	Hematopoietic cell lineage	10	1.8	0.0011	0.017
KEGG_PATHWAY	Systemic lupus erythematosus	10	1.8	0.003	0.041
KEGG_PATHWAY	Antigen processing and presentation	8	1.5	0.013	0.15
KEGG_PATHWAY	PPAR signaling pathway	7	1.3	0.018	0.19
KEGG_PATHWAY	Oocyte meiosis	9	1.6	0.018	0.18
KEGG_PATHWAY	Viral myocarditis	7	1.3	0.02	0.18
KEGG_PATHWAY	Arachidonic acid metabolism	6	1.1	0.027	0.22
KEGG_PATHWAY	Cell cycle	9	1.6	0.036	0.27
KEGG_PATHWAY	Drug metabolism	6	1.1	0.04	0.27

Table III. Enriched pathways in group B.

Category	Term	Count	%	P-value	Benjamini
KEGG_PATHWAY	T cell receptor signaling pathway	11	4.8	0.0000046	0.00048
KEGG_PATHWAY	Cytokine-cytokine receptor interaction	16	7	0.0000075	0.00039
KEGG_PATHWAY	Toll-like receptor signaling pathway	9	3.9	0.00014	0.0047
KEGG_PATHWAY	Cell adhesion molecules (CAMs)	10	4.3	0.00016	0.0042
KEGG_PATHWAY	Leukocyte transendothelial migration	8	3.5	0.0021	0.041
KEGG_PATHWAY	Chemokine signaling pathway	10	4.3	0.0021	0.035
KEGG_PATHWAY	Intestinal immune network for IgA production	5	2.2	0.0064	0.091
KEGG_PATHWAY	Autoimmune thyroid disease	5	2.2	0.0074	0.091
KEGG_PATHWAY	Primary immunodeficiency	4	1.7	0.016	0.17
KEGG_PATHWAY	Type I diabetes mellitus	4	1.7	0.026	0.24
KEGG_PATHWAY	Axon guidance	6	2.6	0.047	0.36
KEGG_PATHWAY	Cytosolic DNA-sensing pathway	4	1.7	0.052	0.37
KEGG_PATHWAY	Natural killer cell mediated cytotoxicity	6	2.6	0.053	0.35
KEGG_PATHWAY	NOD-like receptor signaling pathway	4	1.7	0.069	0.41
KEGG_PATHWAY	Focal adhesion	7	3	0.087	0.46
KEGG_PATHWAY	RIG-I-like receptor signaling pathway	4	1.7	0.095	0.47
KEGG_PATHWAY	Prion diseases	3	1.3	0.1	0.47

we focused on adenocarcinoma of the lung, and particularly whether we could identify a novel prognostic signature of early recurrence in early-stage lung adenocarcinoma using cDNA microarray techniques.

The data indicated that patterns of gene expression obtained from cDNA microarray studies of crudely dissected lung tumors can be used to detect tumor subtypes that correlate with biological and clinical phenotypes. Specifically, patterns of gene expression were found that corresponded to

the major morphological classes of lung tumors. In addition, we were able to define two subgroups of early recurrence in the adenocarcinoma cases that differed not only in gene expression patterns, but also in clinical and pathological properties, including histological differentiation and subtype. In the statistical analysis of microarray data, when compared with the non-early-recurrence group C, we revealed 723 genes with significant differences in expression in the samples of group A, whereas 274 genes showed significant differences in

expression in group B. The differentially expressed genes were classified according to biological processes. We searched 171 and 33 enriched GO terms for DEGs for the A and B lists, respectively, with the annotation analysis plug-in of the Subio platform (data not shown).

Gene annotation enrichment analysis is a functional analysis technique that has gained widespread attention and for which many tools have been developed. The differentially expressed genes were classified according to biological processes and molecular functions using the functional annotation clustering tool of the DAVID bioinformatics resources. The DAVID functional clustering analysis revealed 16 significantly altered biological pathways in group A that included 3 distinct functionally related metastatic categories, specifically CAMs, cell cycle, and antigen processing and presentation. In group B, there were 17 significantly altered biological pathways, including 7 distinct functionally related metastatic categories. Notably, the CAM pathway was the most interrelated in both groups. In addition, the T cell receptor signaling pathway, cytokine-cytokine receptor interaction, toll-like receptor signaling pathway, chemokine signaling pathway, primary immunodeficiency and natural killer cell mediated cytotoxicity were also altered (Tables II and III). These results suggest that the possibility of metastasis of early-stage lung adenocarcinoma was closely related to the CAM pathway. Interestingly, considering the relationship between group A or group B and histological differentiation as poor or well/moderate, respectively, the metastatic possibility of poorly differentiated early adenocarcinoma appeared to be correlated with tumor development factors, such as the cell cycle, whereas that of well/moderately differentiated early-stage adenocarcinoma appeared to be correlated with host immunological factors, such as the T cell receptor signaling pathway, cytokine-cytokine receptor interaction, the toll-like receptor signaling pathway, the chemokine signaling pathway, primary immunodeficiency and natural killer cell mediated cytotoxicity.

Our results suggest that the particular genes that define the clusters and molecular pathways, or that are associated with early recurrence, likely reflect the characteristics of the particular tumors included in the analysis. Current therapy for patients with early-stage disease usually consists of surgical resection without adjuvant treatment. Clearly, the identification of a high-risk group among early-stage patients would lead to consideration of additional therapeutic interventions, possibly leading to improved survival of these patients.

To our knowledge, this is the first study utilizing cDNA microarray techniques, followed by molecular functional pathway analysis, concerning the early recurrence of early-stage adenocarcinoma of the lung. However, there were some limitations to this study. Firstly, this was a small data set analysis at a single institute. A large cohort sample of patients from multiple institutions is needed. Secondly, the potential interactions of the many specific individual genes and their clusters in lung tumor biology and clinical outcome exist. This may be due to the different platforms used (different genes analyzed) and the different algorithms for selecting functional categories. Thirdly, hierarchical clustering methods and functional analysis offer a powerful approach to class discovery, but provide no means of determining validity for the classes

discovered. This is still a putative functional analysis. It is important to state that several *in vitro* and *in vivo* studies are still needed to demonstrate whether these mechanisms are effective in reality.

In conclusion, in the present study, we present a comprehensive gene expression analysis and functional pathway analysis of early-stage lung adenocarcinomas, wherein we identified a distinct molecular pathway category, the CAMs, which correlated with the early relapse of early-stage lung adenocarcinoma subclasses. Further *in vitro* and *in vivo* studies, which can demonstrate these mechanisms, are warranted.

#### Acknowledgements

We are indebted to Dr Clifford A. Kolba, to Associate Professor Edward F. Barroga and to Professor J. Patrick Barron, Chairman of the Department of International Medical Communications of Tokyo Medical University, for their editorial review of the English manuscript. This study was supported by grants from the Ministry of Education, Culture, Sports, Science and Technology (grant no. 21791332).

#### References

1. Sawabata N, Asamura H, Goya T, *et al*: Japanese Lung Cancer Registry Study: first prospective enrollment of a large number of surgical and nonsurgical cases in 2002. *J Thorac Oncol* 5: 1369-1375, 2010.
2. Asamura H, Goya T, Koshiishi Y, *et al*: A Japanese Lung Cancer Registry study: prognosis of 13,010 resected lung cancers. *J Thorac Oncol* 3: 46-52, 2008.
3. Schena M, Shalon D, Davis RW and Brown PO: Quantitative monitoring of gene expression patterns with a complementary DNA microarray. *Science* 270: 467-470, 1995.
4. Chee M, Yang R, Hubbell E, *et al*: Accessing genetic information with high-density DNA arrays. *Science* 274: 610-614, 1996.
5. Beer DG, Kardia SL, Huang CC, *et al*: Gene-expression profiles predict survival of patients with lung adenocarcinoma. *Nat Med* 8: 816-824, 2002.
6. Bhattacharjee A, Richards WG, Staunton J, *et al*: Classification of human lung carcinomas by mRNA expression profiling reveals distinct adenocarcinoma subclasses. *Proc Natl Acad Sci USA* 98: 13790-13795, 2001.
7. Garber ME, Troyanskaya OG, Schluens K, *et al*: Diversity of gene expression in adenocarcinoma of the lung. *Proc Natl Acad Sci USA* 98: 13784-13789, 2001.
8. Wigle DA, Jurisica I, Radulovich N, *et al*: Molecular profiling of non-small cell lung cancer and correlation with disease-free survival. *Cancer Res* 62: 3005-3008, 2002.
9. Raponi M, Zhang Y, Yu J, *et al*: Gene expression signatures for predicting prognosis of squamous cell and adenocarcinomas of the lung. *Cancer Res* 66: 7466-7472, 2006.
10. Lu Y, Yao R, Yan Y, *et al*: A gene expression signature that can predict green tea exposure and chemopreventive efficacy of lung cancer in mice. *Cancer Res* 66: 1956-1963, 2006.
11. Potti A, Mukherjee S, Petersen R, *et al*: A genomic strategy to refine prognosis in early-stage non-small-cell lung cancer. *N Engl J Med* 355: 570-580, 2006.
12. Nakamura H, Saji H, Ogata A, *et al*: cDNA microarray analysis of gene expression in pathologic stage IA nonsmall cell lung carcinomas. *Cancer* 97: 2798-2805, 2003.
13. Meyerson M and Carbone D: Genomic and proteomic profiling of lung cancers: lung cancer classification in the age of targeted therapy. *J Clin Oncol* 23: 3219-3226, 2005.
14. Sawabata N, Miyaoka E, Asamura H, *et al*: Japanese lung cancer registry study of 11,663 surgical cases in 2004: demographic and prognosis changes over decade. *J Thorac Oncol* 6: 1229-1235, 2011.