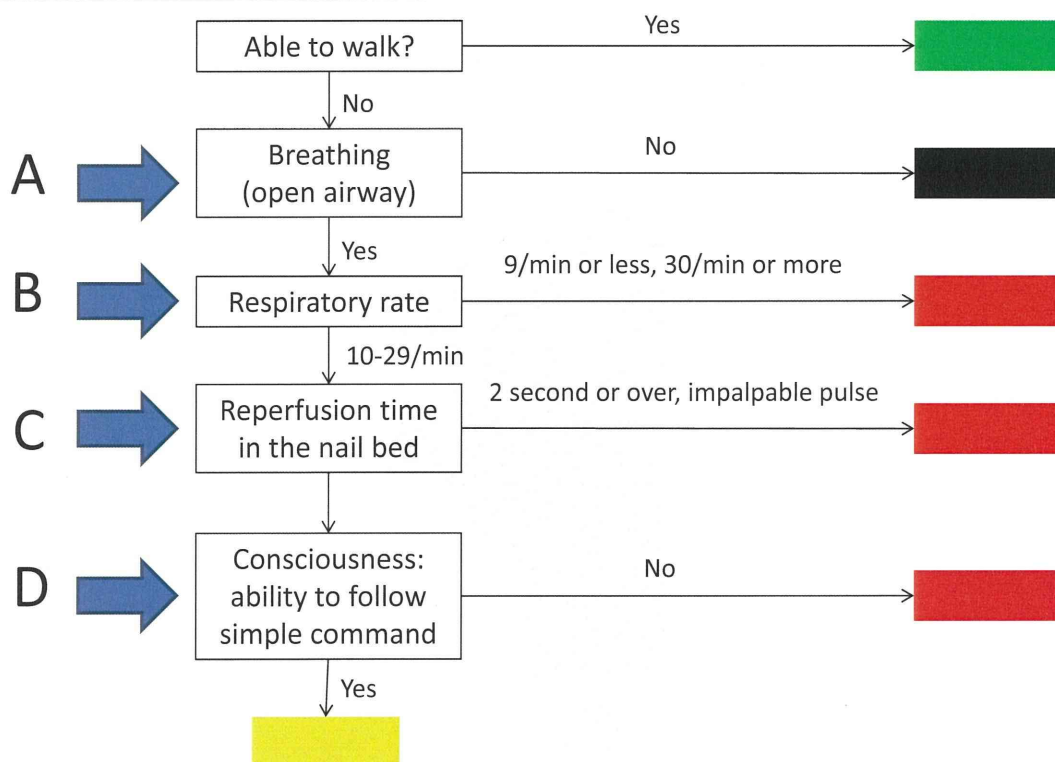


Let's practice!

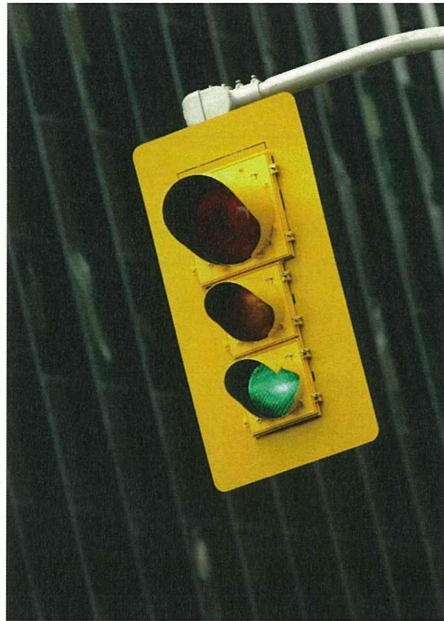


Question 1

- 55 years-old female.
- Consciousness is clear.
- Head contused wound, stopped bleeding.
- RR 18/min, radial pulse 70/min.
- CRT 1 second.
- Possible to walk.

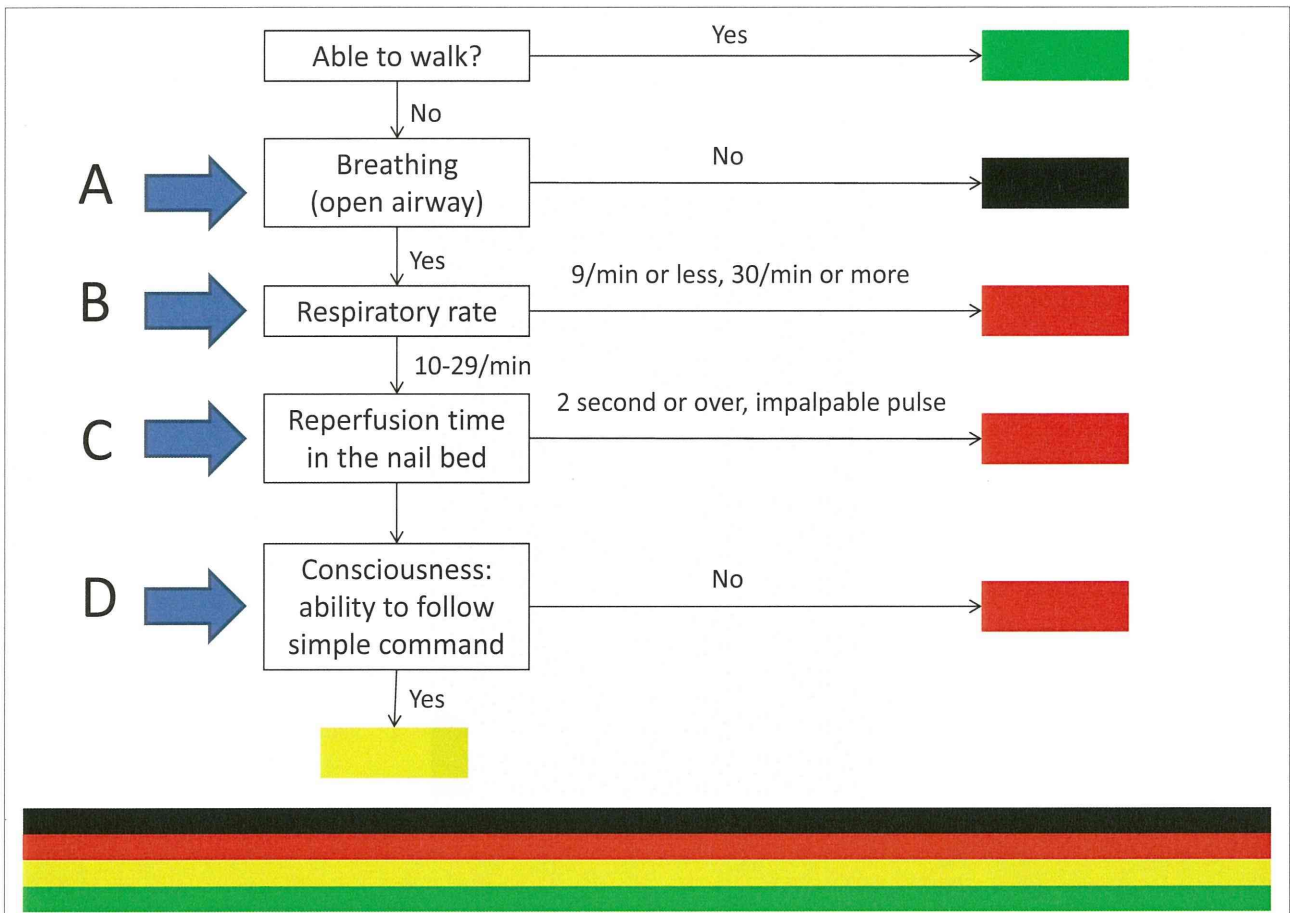


Answer 1

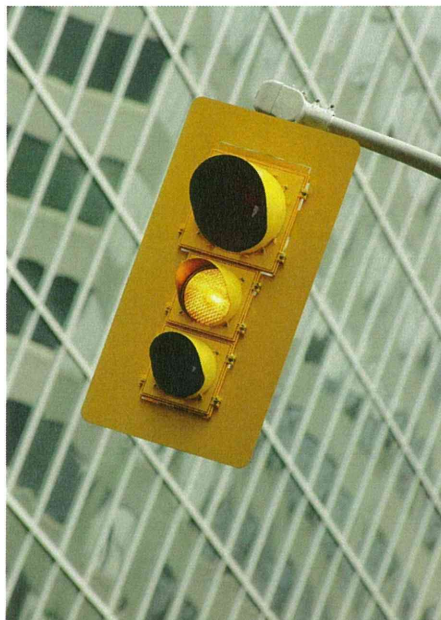


Question 2

- 36 year-old female.
- Transferred by stretcher.
- RR 28/min, radial pulse 120/min.
- CRT 1 second.
- Verbal response possible.
- Burn back by level III, 30%.

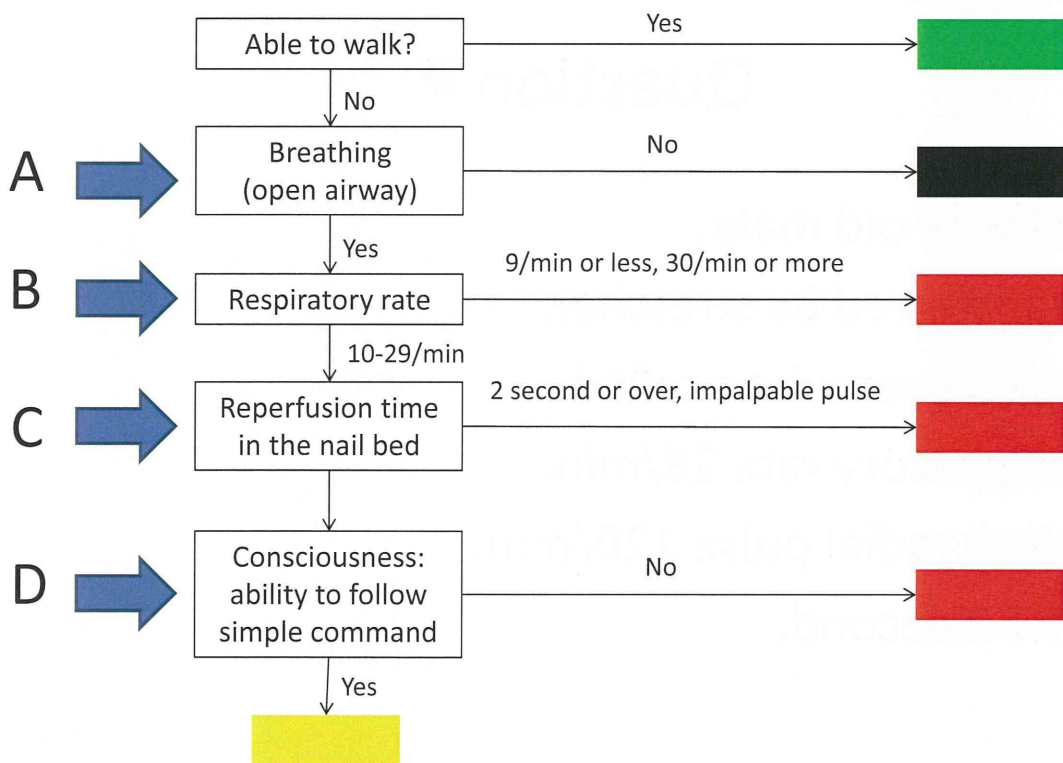


Answer 2

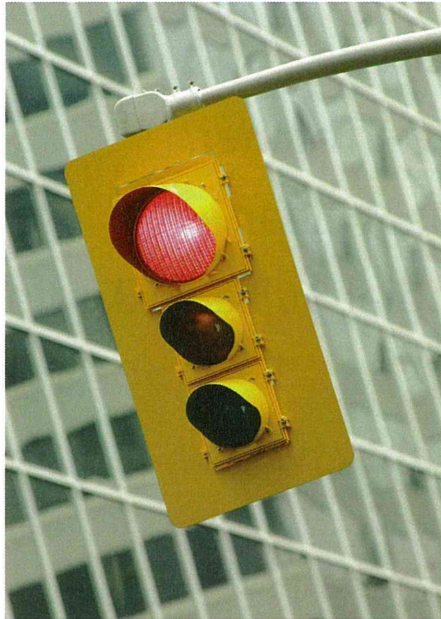


Question 3

- 45 year-old female.
- Transferred by stretcher.
- Consciousness is clear.
- RR 32/min, radial pulse 110/min.
- CRT 1 second.
- Pain on the right chest.



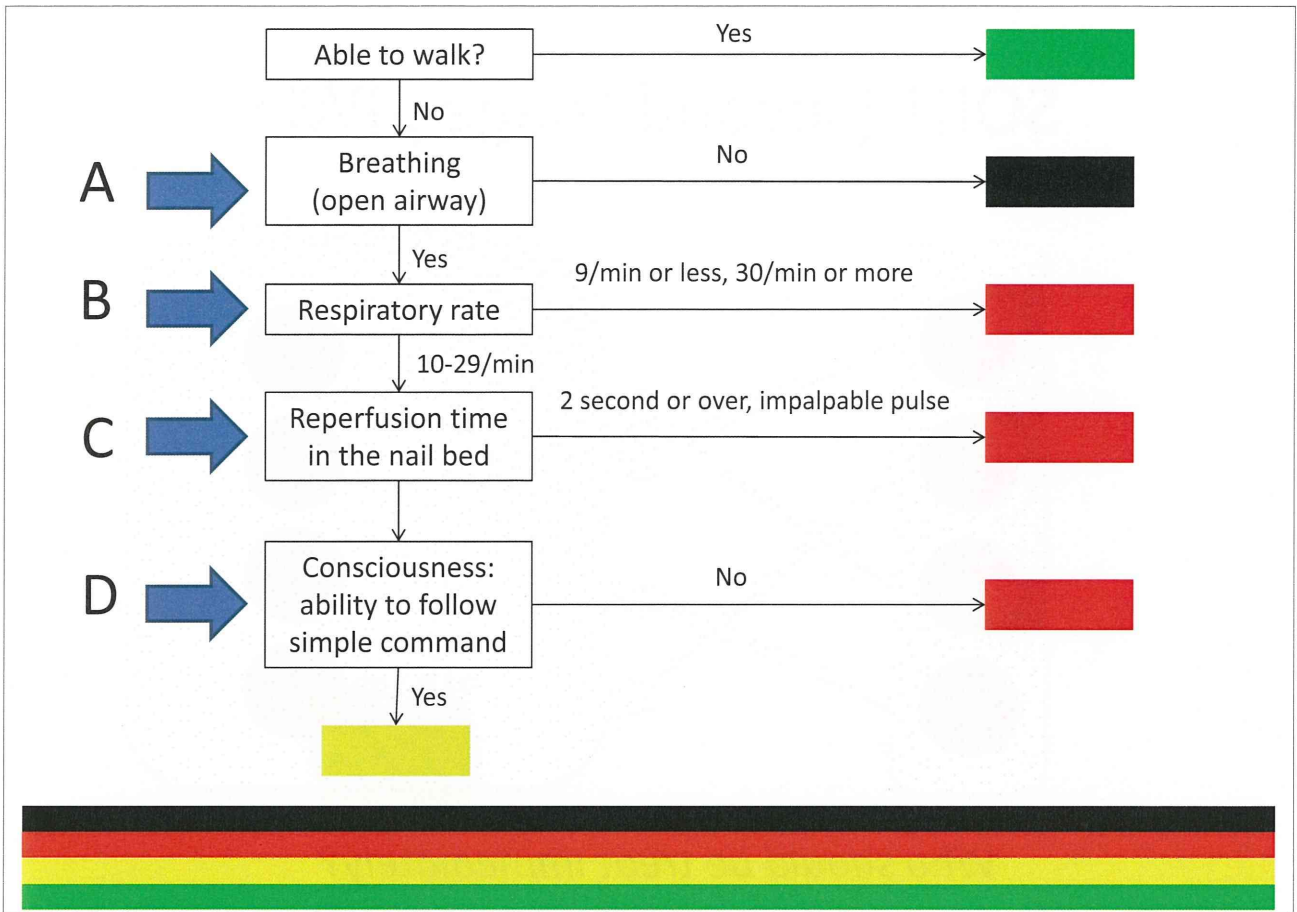
Answer 3



Question 4

- 30 year-old male.
- Transferred by stretcher.
- Open eyes when called.
- Respiratory rate 28/min.
- Weak radial pulse 120/min.
- CRT 3 second.

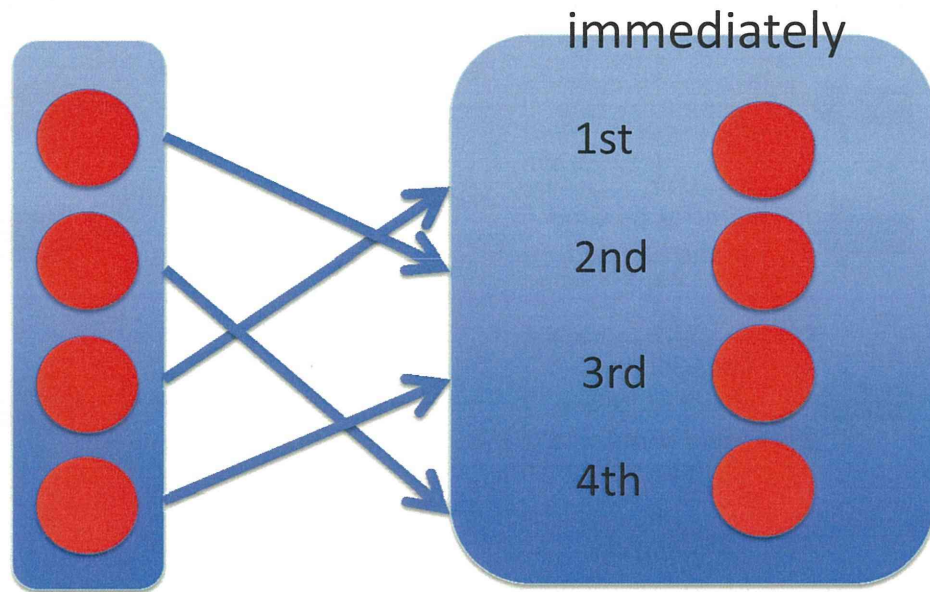




Answer 4



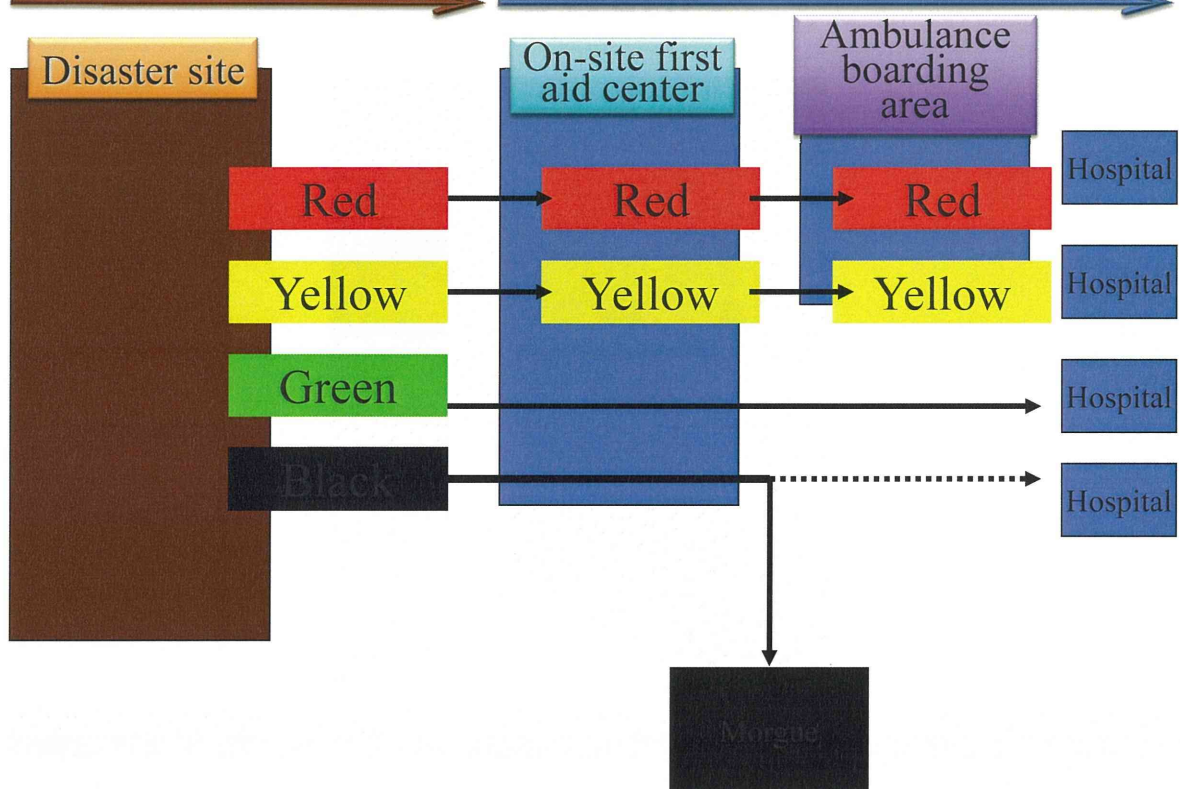
SORT (second triage , PAT)



Who should be treated immediately?

Triage "Sieve=START"

Triage "Sort=PAT"



Main purpose of triage

- Not only severity
- But also who has possibility to survive

SECONDARY TRIAGE = "SORT OR PAT"

- 1st step : Physiological assessment
- 2nd step : Anatomical assessment
- 3rd step : Causes of injury
- 4th step : Disaster-Vulnerable or not?

(*PAT* : *physiological and anatomical Triage*)

SORT(PAT) Triage

1st & 2nd assessment

Initial phase: Physiological evaluation

1. Consciousness:
 - GCS < 12
2. Respiratory rate:
 - 9/min or less, 30/min or more
3. Pulse rate:
 - 120/min or more, less than 50/min
4. Blood pressure:
 - sBP under 90, 200 or over
5. SpO₂:
 - Under 90%
6. Others:
 - Shock, hypothermia (35° C or under)

Secondary phase: Anatomical evaluation

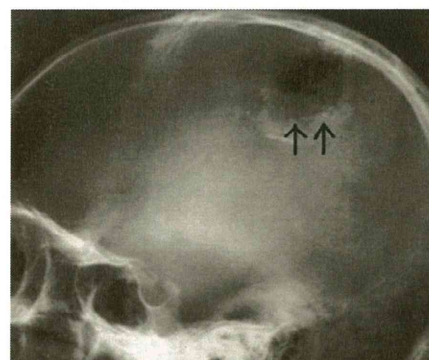
1. Open depressed **skull fracture**
2. Marked dilatation of external **jugular vein**
3. **Aerodermection** of cervical or pectoral region
4. **Flail** chest
5. Open **pneumothorax**
6. Abdominal **protrusion**, abdominal wall strain
7. Fracture of the **pelvis**
8. **Bilateral** Fracture of the **femur**
9. Limb **amputation**
10. **Tetraplegia**
11. **Penetrating** trauma
12. **Degloving** injury
13. Burn of 15% or more, combination of facial and **inhalation** burns

Those who exhibit one of the abnormalities listed above fall into the immediate treatment group



Anatomical evaluation

Open depressed skull fracture



Anatomical evaluation

Marked dilatation of external jugular vein

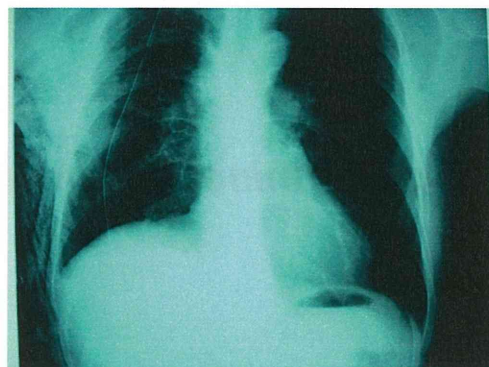
*Tension pneumothorax?
Cardiac tamponade?*



Anatomical evaluation

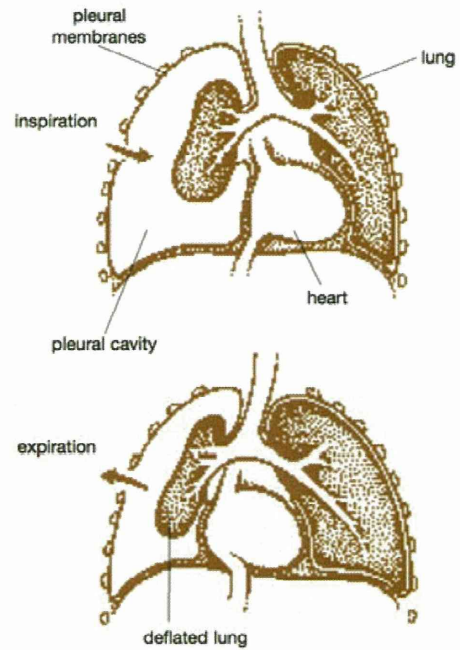
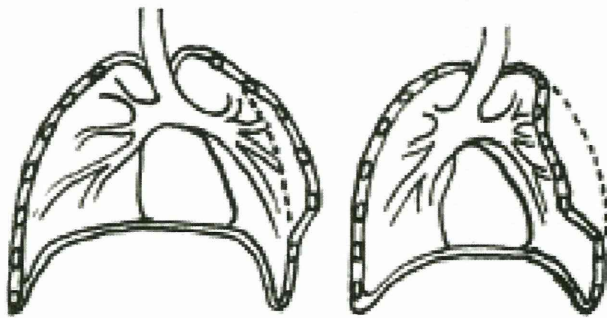
Aerodermection of cervical or pectoral region

..... *snow-ball crepitation*



Anatomical evaluation

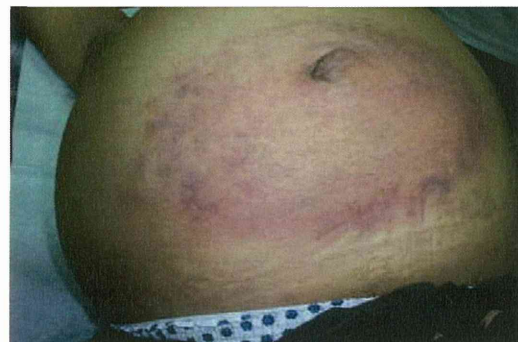
Flail chest
Open pneumothorax



Anatomical evaluation

Abdominal protrusion, abdominal wall strain

intraabdominal hemorrhage

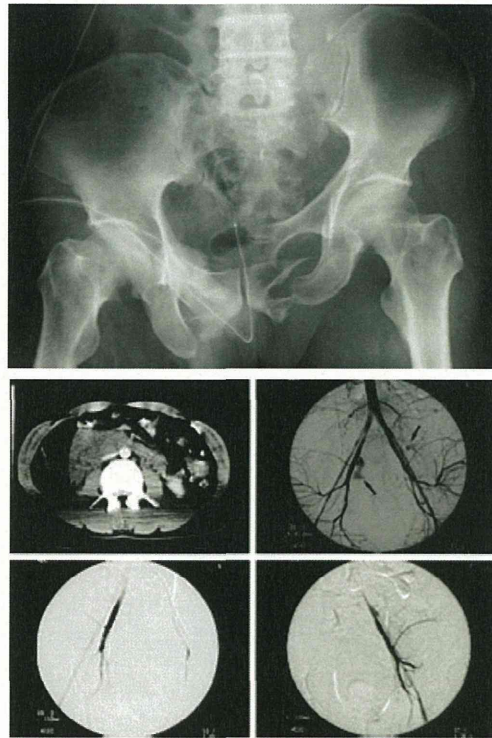


Anatomical evaluation

Fracture of the pelvis

flail pelvis
pressure pain
unequal leg length

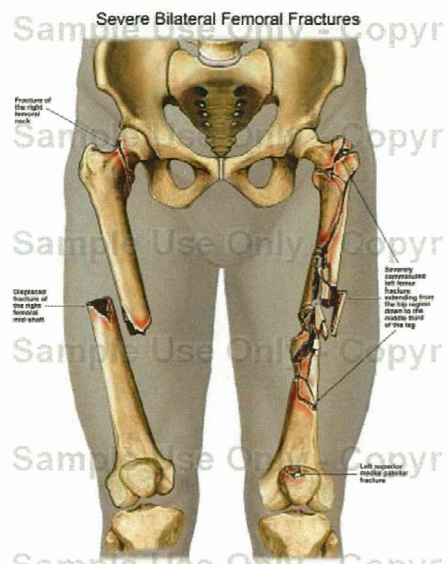
Massive bleeding



Anatomical evaluation

Bilateral Fracture of the femur

Massive bleeding



Anatomical evaluation

Limb amputation

Anatomical evaluation

Tetraplegia

Spinal cord injury



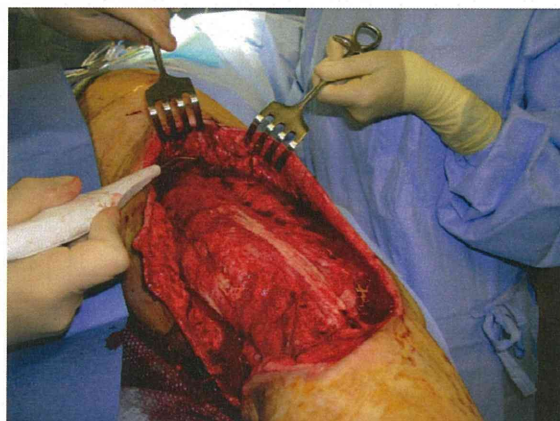
Anatomical evaluation

Penetrating trauma



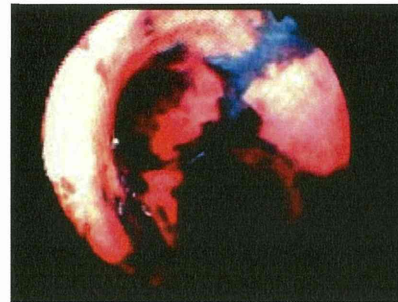
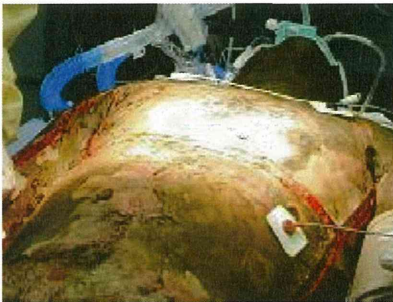
Anatomical evaluation

Deglobing injury



Anatomical evaluation

*Burn of 15% or more,
combination of facial and inhalation burns*



SORT(PAT) Triage

1st & 2nd assessment

Initial phase: Physiological evaluation

1. Consciousness:
 - GCS < 12
2. Respiratory rate:
 - 9/min or less, 30/min or more
3. Pulse rate:
 - 120/min or more, less than 50/min
4. Blood pressure:
 - sBP under 90, 200 or over
5. SpO2:
 - Under 90%
6. Others:
 - Shock, hypothermia (35° C or under)

Secondary phase: Anatomical evaluation

1. Open depressed **skull fracture**
2. Marked dilatation of external **jugular vein**
3. **Aerodermection** of cervical or pectoral region
4. **Flail** chest
5. Open **pneumothorax**
6. Abdominal **protrusion**, abdominal wall strain
7. Fracture of the **pelvis**
8. **Bilateral** Fracture of the **femur**
9. Limb **amputation**
10. **Tetraplegia**
11. **Penetrating** trauma
12. **Degloving** injury
13. Burn of 15% or more, combination of facial and **inhalation** burns

Those who exhibit one of the abnormalities listed above fall into the immediate treatment group



Causes of Injury

3rd step assessment

Evaluation	Conditions of diseases or injury, clinical state
Causes of injury	Compression of the trunk of the body Compression of more than 1 limb (for more than 2 hours) Explosion Fall from height Abnormal temperature environment Toxic gas Contamination (NBCs :Nucler,Biologocal,Chemical)

- Classify the victim into **upper** criteria even if the victims symptoms seem minor.



Disaster-Vulnerable People

4th step assessment

- | |
|--|
| <ul style="list-style-type: none"> • Children, • Aged people, • Pregnant women, • Sick or injured people
 – with underlying medical conditions, • Tourists |
|--|

classify them into the delayed priority group (II) if necessary.

