

Fig. 9 Distribution of fluorescence marker in skin
1h (a) and 6h (b) after application of the calcein solution

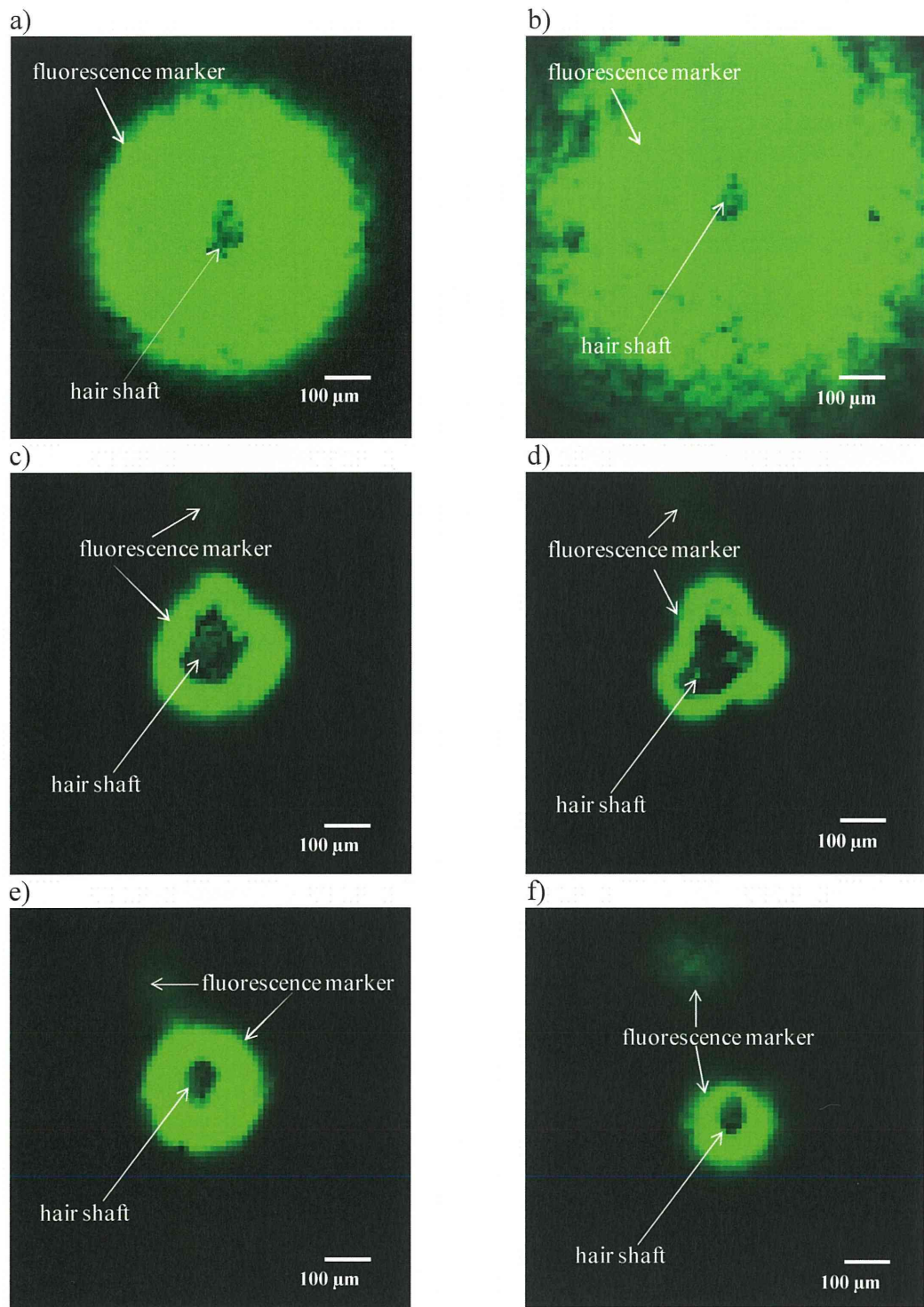


Fig. 10 Distribution of fluorescence marker at different depths (a): 100 μm , (b): 110 μm , (c): 120 μm , (d): 130 μm , (e): 140 μm , (f): 170 μm from skin surface of 2h after application of the calcein solution

