

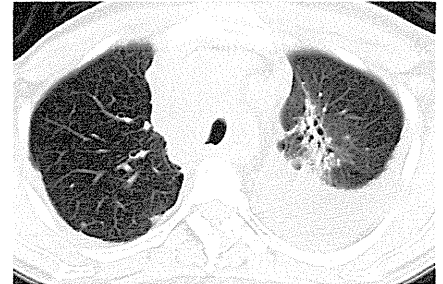
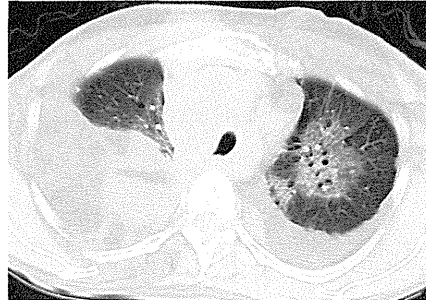
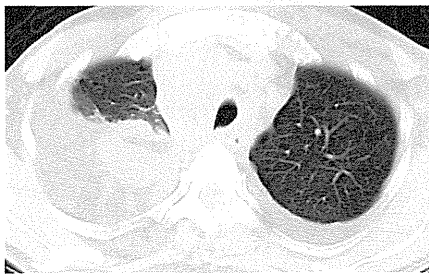
男性

疑われる原因薬剤： erlotinib

増悪前CT画像

増悪時CT画像

増悪後CT画像



2008/12/08

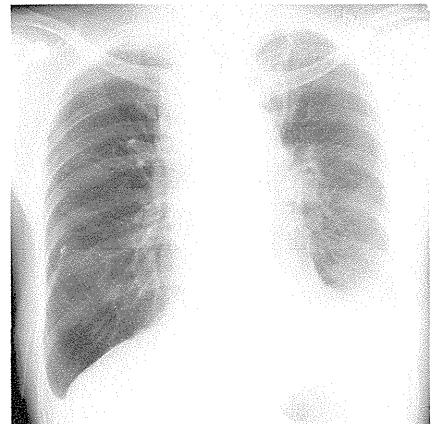
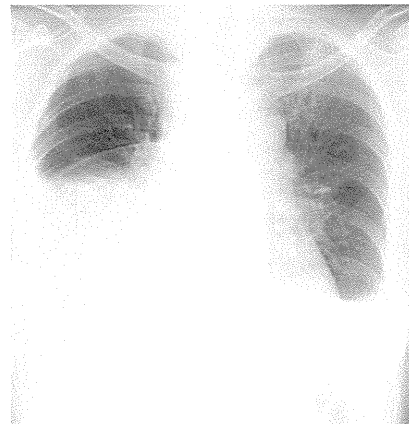
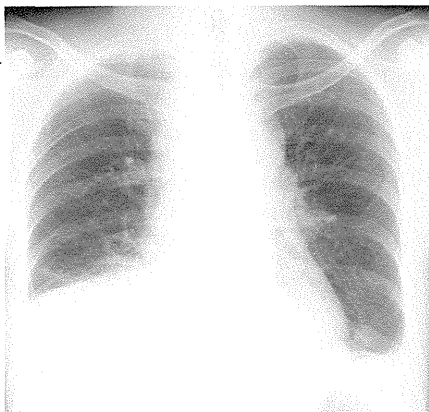
2009/01/02

2009/01/21

増悪前XP

増悪時XP

増悪後XP



2008/12/08

2009/01/02

2009/01/21

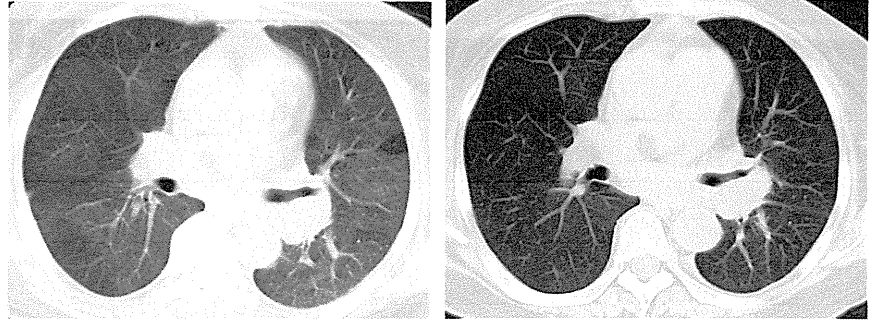
女性

疑われる原因薬剤： gefitinib

増悪前CT画像

増悪時CT画像

増悪後CT画像



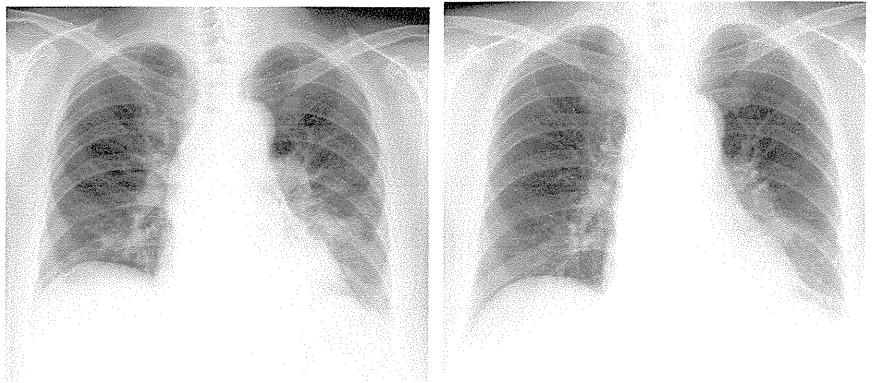
2008/10/10

2008/12/25

増悪前XP

増悪時XP

増悪後XP



2008/10/14

2008/12/25

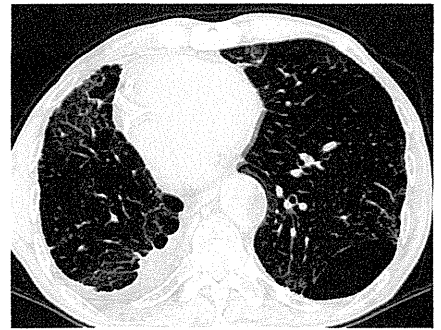
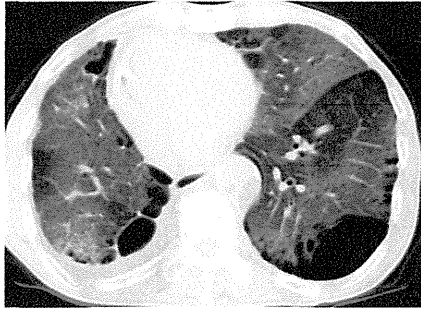
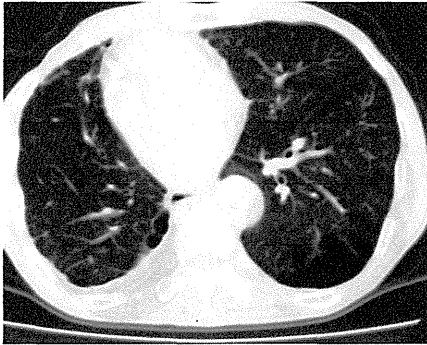
男性

疑われる原因薬剤： gefitinib

増悪前CT画像

増悪時CT画像

増悪後CT画像



2008/07/22

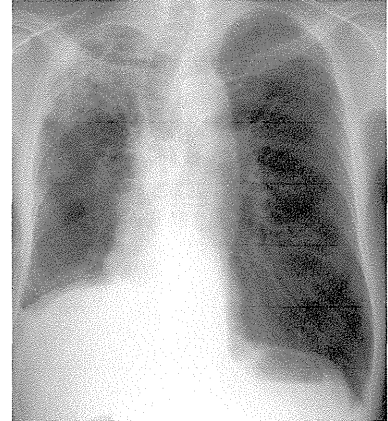
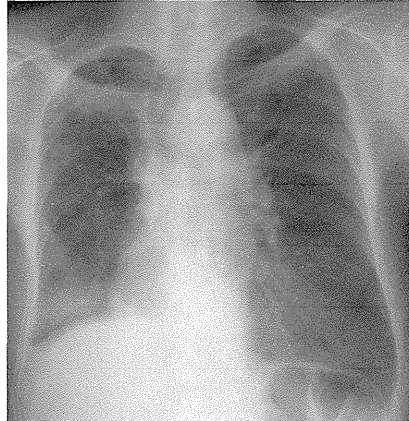
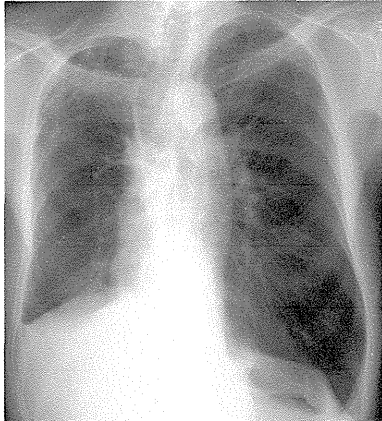
2009/05/31

2009/08/25

増悪前XP

増悪時XP

増悪後XP



2008/10/17

2009/05/31

2009/08/25

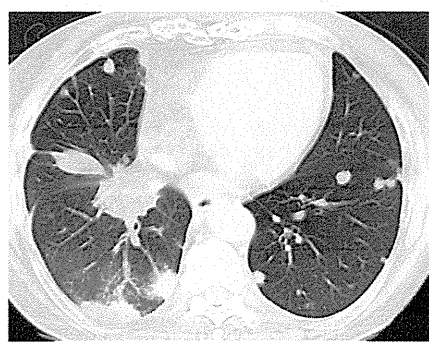
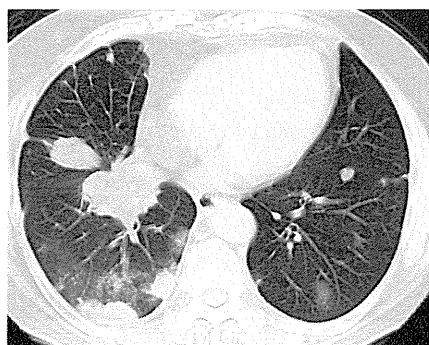
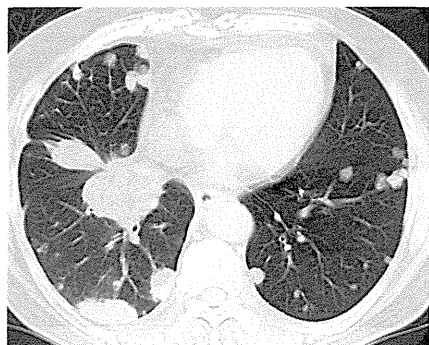
女性

疑われる原因薬剤： erlotinib

増悪前CT画像

増悪時CT画像

増悪後CT画像



2008/07/09

2008/07/28

2008/09/09

増悪前XP

増悪時XP

増悪後XP



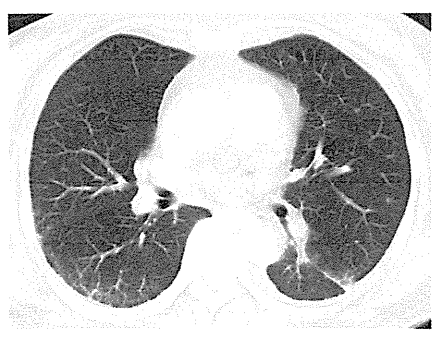
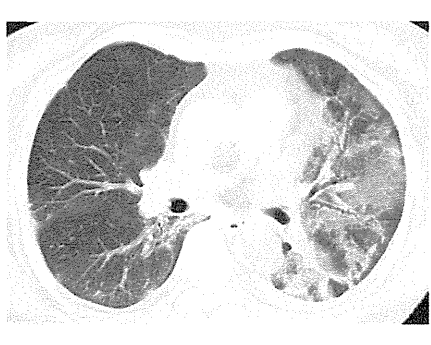
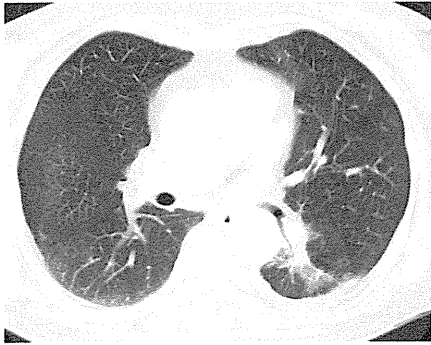
女性

疑われる原因薬剤： gefitinib

増悪前CT画像

増悪時CT画像

増悪後CT画像



2009/05/21

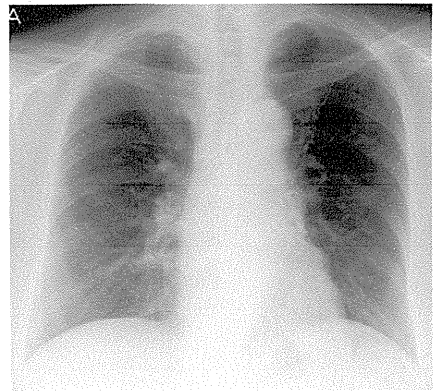
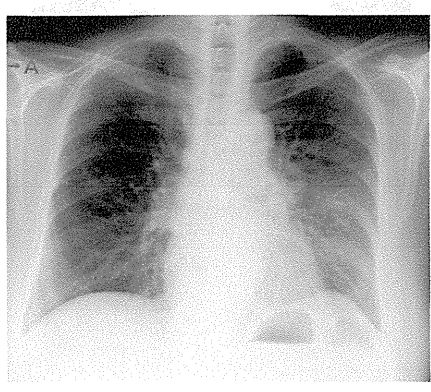
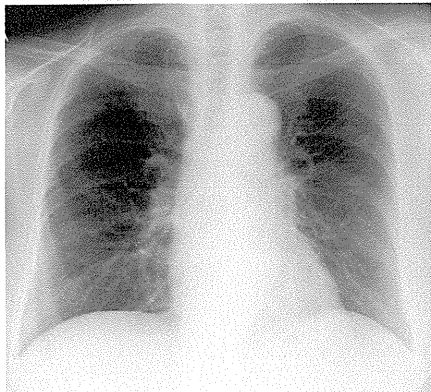
2009/06/10

2009/10/18

増悪前XP

増悪時XP

増悪後XP



2009/05/21

2009/06/10

2009/10/09

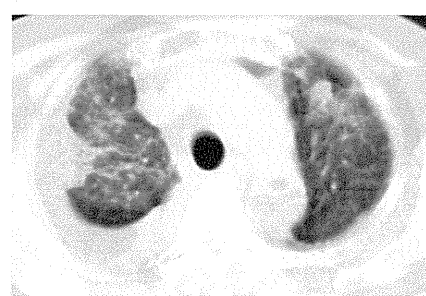
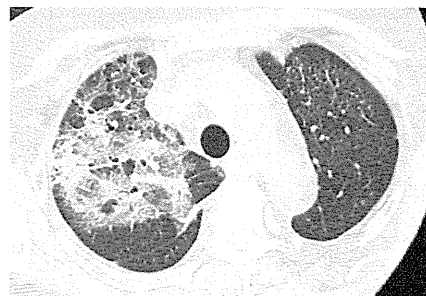
女性

疑われる原因薬剤： gefitinib

増悪前CT画像

増悪時CT画像

増悪後CT画像



2009/01/14

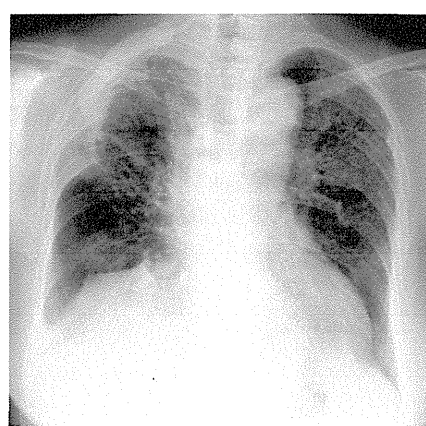
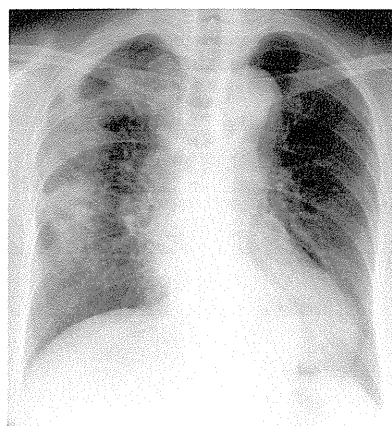
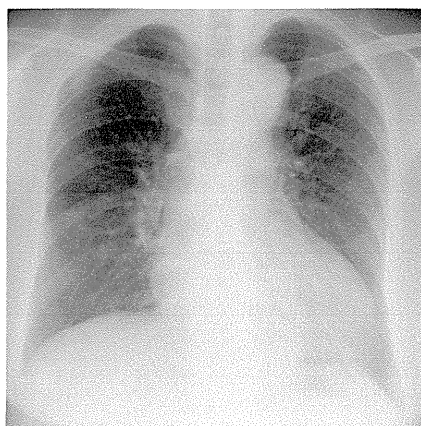
2009/03/02

2009/08/14

増悪前XP

増悪時XP

増悪後XP



2009/02/02

2009/03/02

2009/08/04

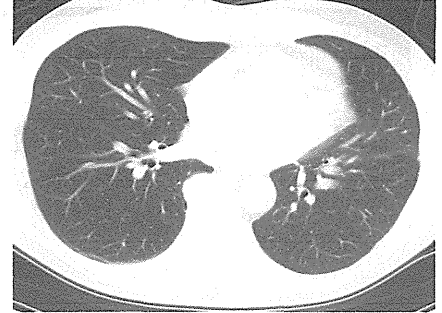
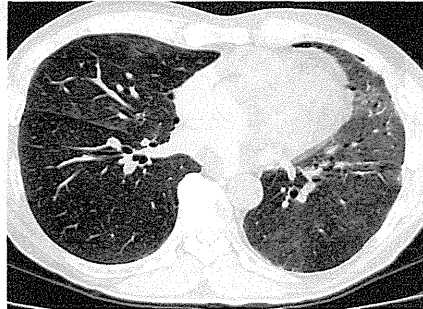
男性

疑われる原因薬剤： gefitinib

増悪前CT画像

増悪時CT画像

増悪後CT画像



2009/09/25

2009/10/30

2010/01/13

増悪前XP

増悪時XP

増悪後XP

2009/09/25

2009/10/31

2010/01/20

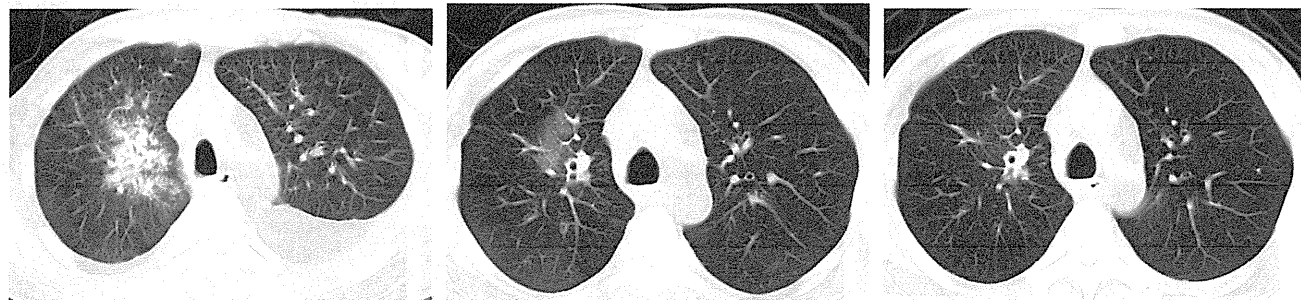
男性

疑われる原因薬剤： gefitinib

増悪前CT画像

増悪時CT画像

増悪後CT画像



2009/11/18

2009/12/17

2010/01/07

増悪前XP

増悪時XP

増悪後XP



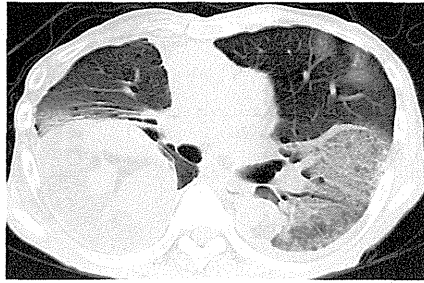
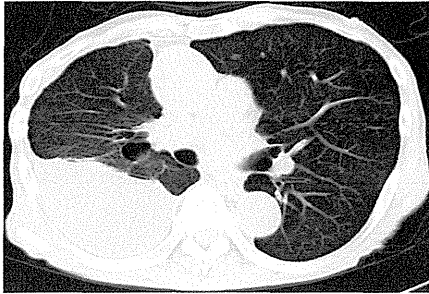
男性

疑われる原因薬剤： gefitinib

増悪前CT画像

増悪時CT画像

増悪後CT画像



2009/10/26

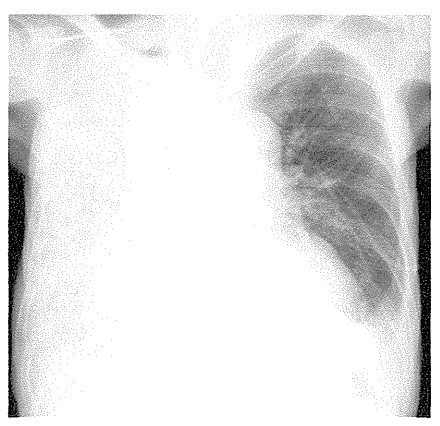
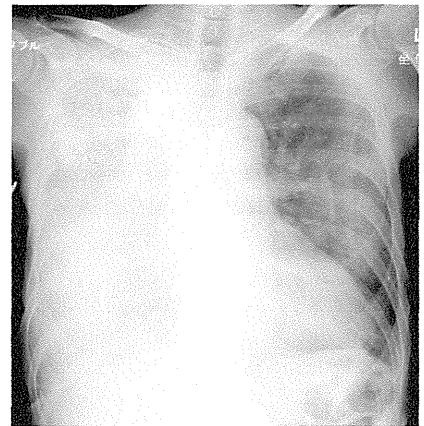
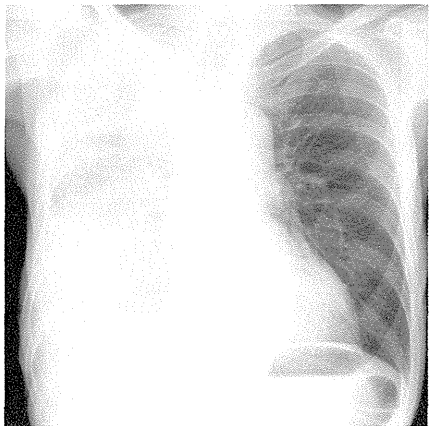
2009/12/17

2010/09/15

増悪前XP

増悪時XP

増悪後XP



2009/10/26

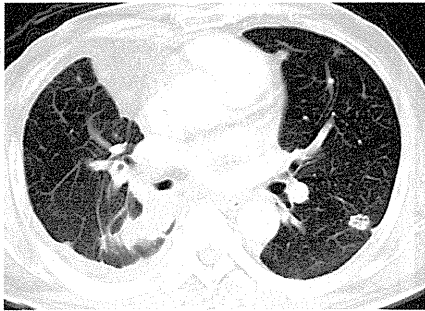
2009/12/17

2010/09/15

男性

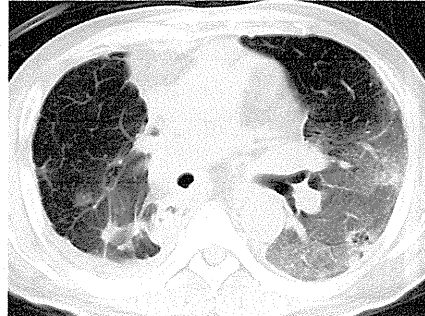
疑われる原因薬剤： gefitinib

増悪前CT画像



2009/12/10

増悪時CT画像

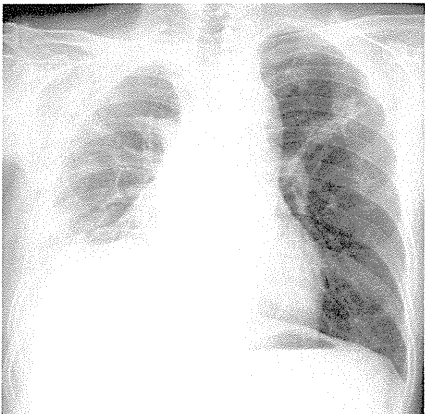


2010/01/12

増悪後CT画像

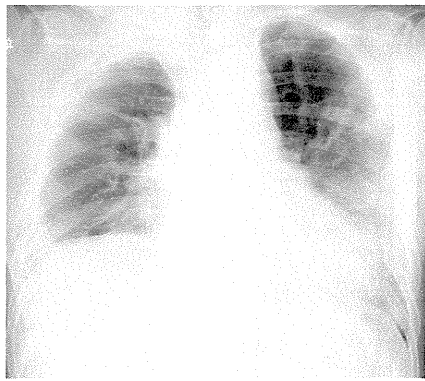


増悪前XP



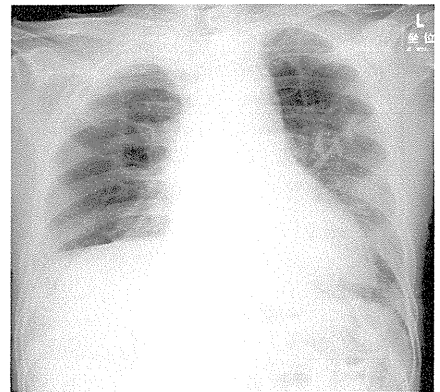
2009/12/07

増悪時XP



2010/01/12

増悪後XP

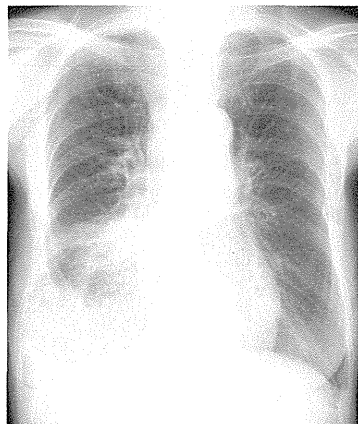


2010/02/01

女性

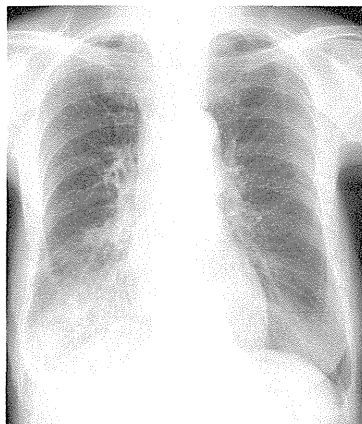
疑われる原因薬剤： gefitinib

増悪前CT画像



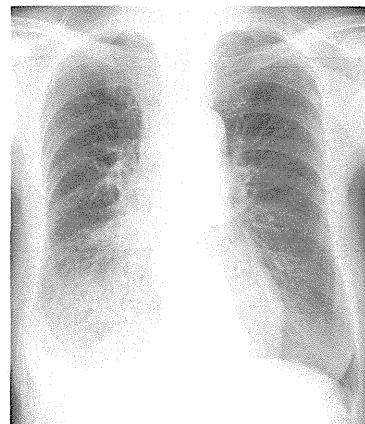
2009/12/18

増悪時CT画像



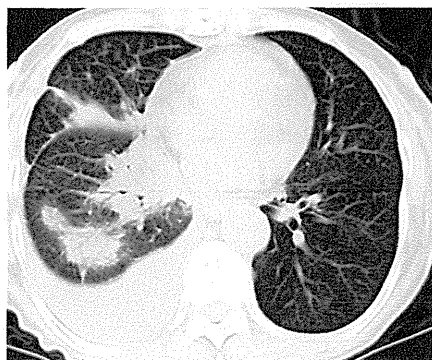
2010/02/12

増悪後CT画像



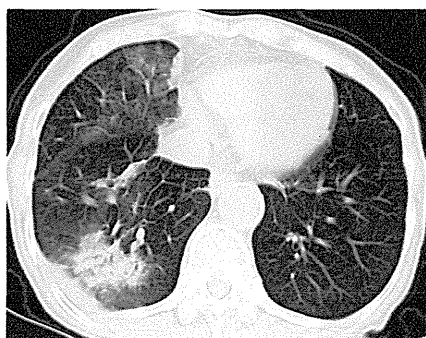
2010/03/12

増悪前XP



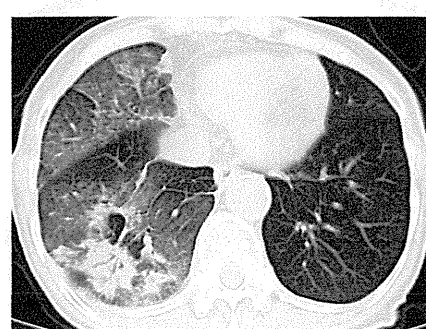
2009/12/15

増悪時XP



2010/01/13

増悪後XP



2010/02/12

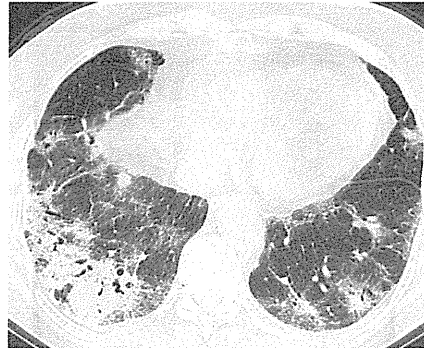
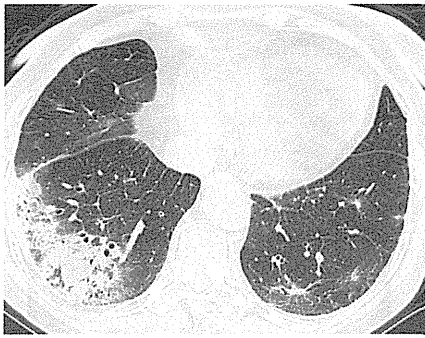
女性

疑われる原因薬剤： Erlotinib

増悪前CT画像

増悪時CT画像

増悪後CT画像



2010/05/10

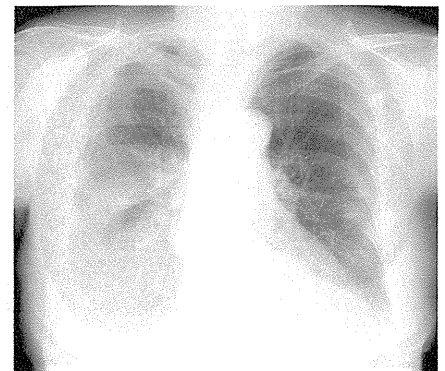
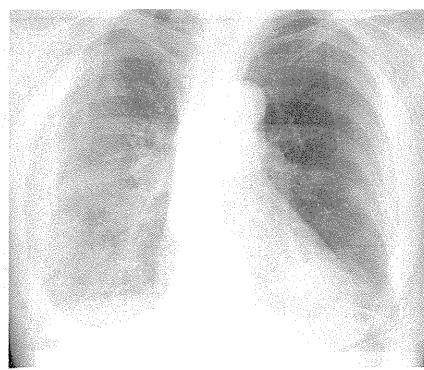
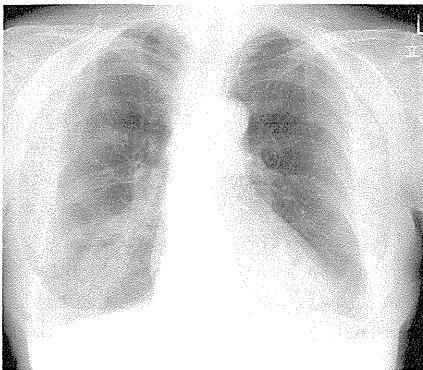
2010/05/25

2010/07/12

増悪前XP

増悪時XP

増悪後XP



2010/06/07

2010/05/25

2010/07/12

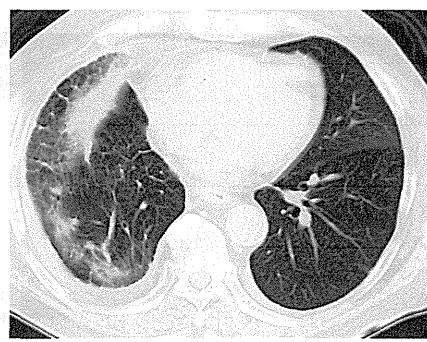
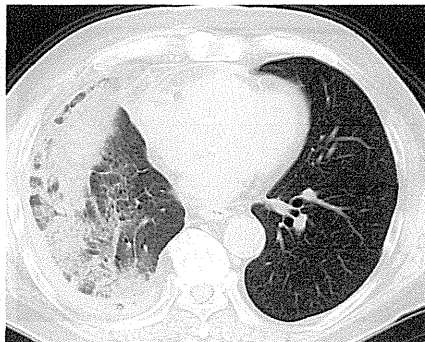
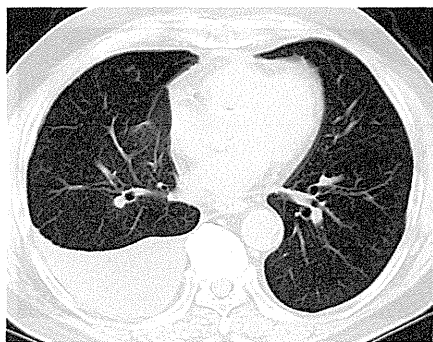
男性

疑われる原因薬剤： gefitinib

増悪前CT画像

増悪時CT画像

増悪後CT画像



2010/02/01

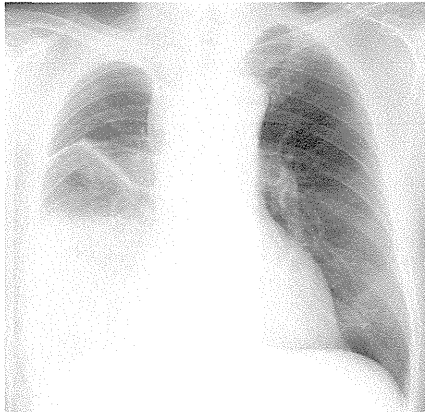
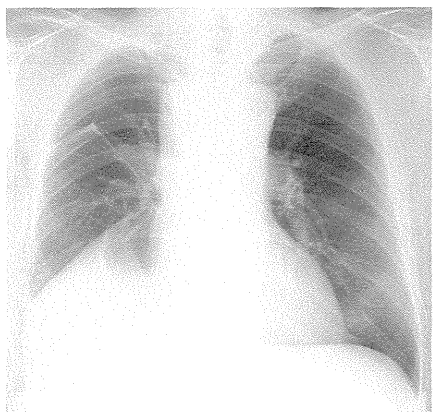
2010/07/12

2010/10/04

増悪前XP

増悪時XP

増悪後XP



2010/01/25

2010/07/12

2010/10/04

男性

疑われる原因薬剤： erlotinib

増悪前CT画像

増悪時CT画像

増悪後CT画像



2010/09/09



2010/10/20

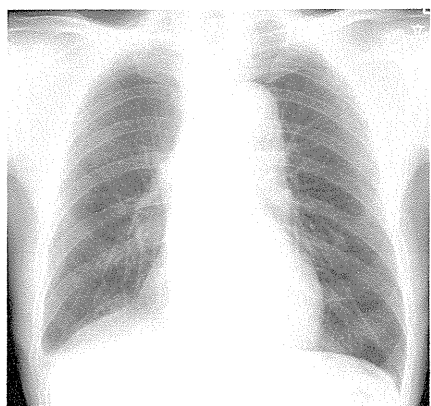


2010/11/15

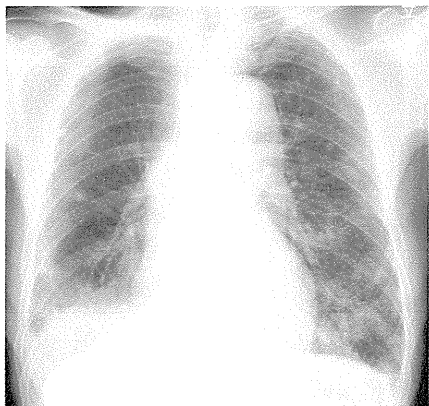
増悪前XP

増悪時XP

増悪後XP



2010/09/08



2010/10/22



2010/11/15

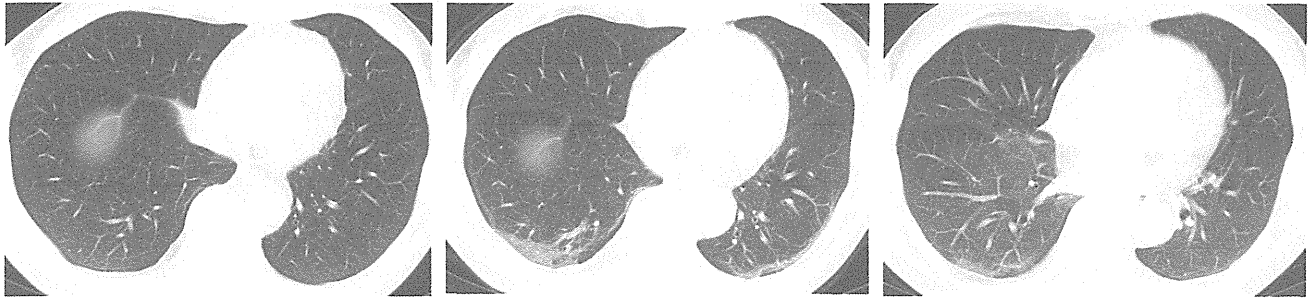
男性

疑われる原因薬剤： Erlotinib

増悪前CT画像

増悪時CT画像

増悪後CT画像



2010/12/27

2011/01/19

2011/03/31

増悪前XP

増悪時XP

増悪後XP

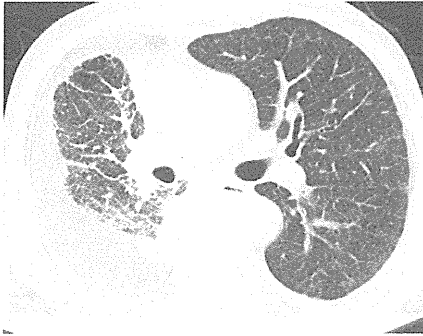
男性

疑われる原因薬剤： gefitinib

増悪前CT画像

増悪時CT画像

増悪後CT画像



2010/11/09

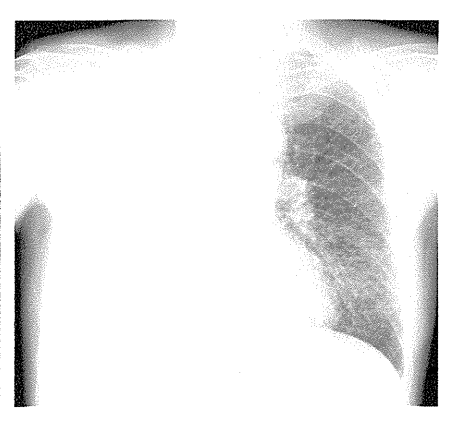
2010/12/28

2011/01/24

増悪前XP

増悪時XP

増悪後XP





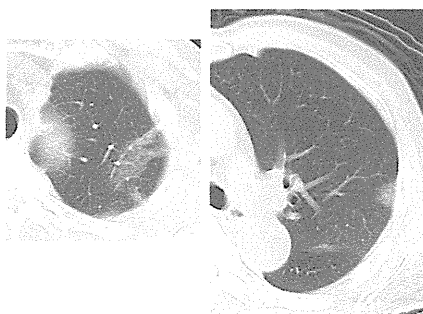
男性

疑われる原因薬剤： erlotinib

増悪前CT画像

増悪時CT画像

増悪後CT画像



2011/03/18

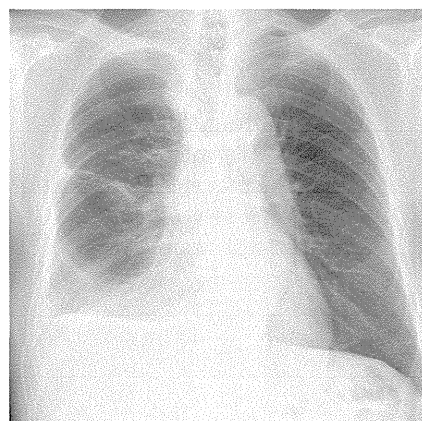
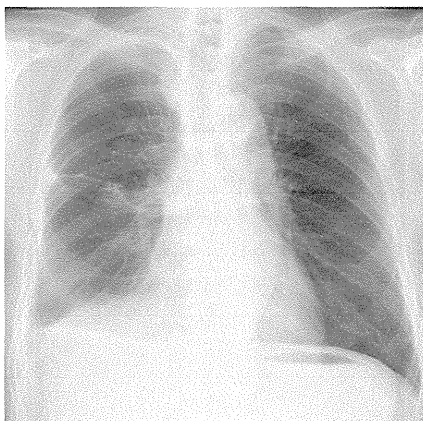
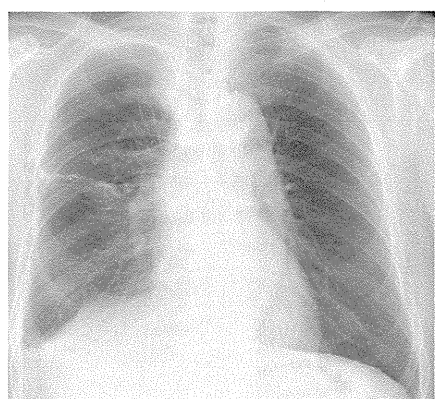
2011/04/11

2011/05/18

増悪前XP

増悪時XP

増悪後XP



2011/03/18

2011/04/11

2011/05/18

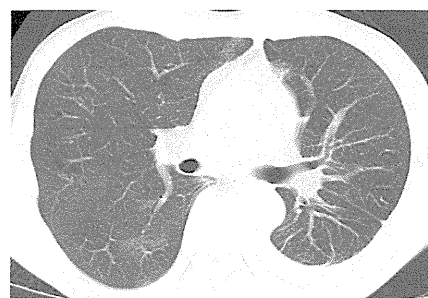
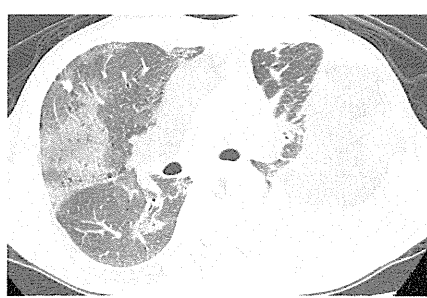
男性

疑われる原因薬剤： gefitinib

増悪前CT画像

増悪時CT画像

増悪後CT画像



2011/10/03

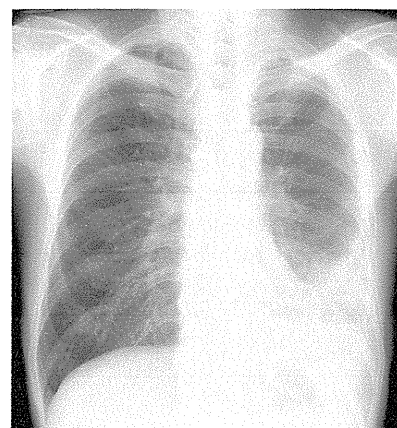
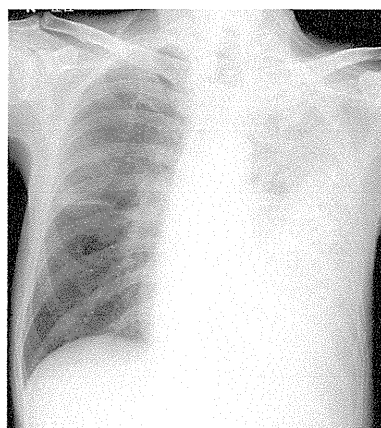
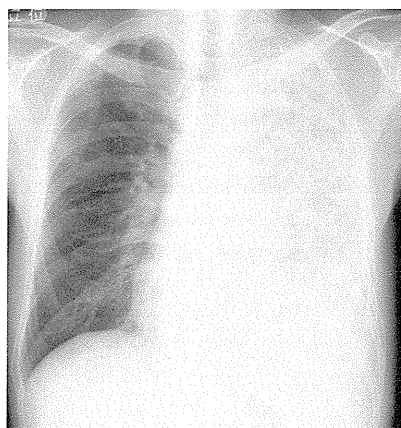
2011/10/15

2011/11/07

増悪前XP

増悪時XP

増悪後XP



2011/10/03

2011/10/15

2011/11/07

研究成果の刊行に関する一覧表

英文論文

萩原弘一

萩原弘一 (研究代表者)

- 1 Oizumi S, Kobayashi K, Inoue A, et al. Quality of Life with Gefitinib in Patients with EGFR-Mutated Non-Small Cell Lung Cancer: Quality of Life Analysis of North East Japan Study Group 002 Trial. *Oncologist*. 2012; 17: 863-70.
- 2 Kim ST, Jung HY, Sung JS, et al. Can Serum be Used for Analyzing the EGFR Mutation Status in Patients with Advanced Non-small Cell Lung Cancer? *Am J Clin Oncol*. 2012.
- 3 Ishii T, Hagiwara K, Kamio K, et al. Involvement of surfactant protein D in emphysema revealed by genetic association study. *Eur J Hum Genet*. 2012; 20: 230-5.
- 4 Ishii T, Hagiwara K, Ikeda S, et al. Association Between Genetic Variations In Surfactant Protein D and Emphysema, Interstitial Pneumonia, and Lung Cancer in a Japanese Population. *COPD*. 2012.
- 5 Inoue A, Kobayashi K, Maemondo M, et al. Updated overall survival results from a randomized phase III trial comparing gefitinib with carboplatin-paclitaxel for chemo-naive non-small cell lung cancer with sensitive EGFR gene mutations (NEJ002). *Ann Oncol*. 2012.
- 6 Huqun, Ishikawa R, Zhang J, et al. Enhancer of zeste homolog 2 is a novel prognostic biomarker in nonsmall cell lung cancer. *Cancer*. 2012; 118: 1599-606.
- 7 Goto K, Satouchi M, Ishii G, et al. An evaluation study of EGFR mutation tests utilized for non-small-cell lung cancer in the diagnostic setting. *Ann Oncol*. 2012.
- 8 Takaku Y, Nakagome K, Kobayashi T, Hagiwara K, Kanazawa M, Nagata M. IFN-gamma-inducible protein of 10 kDa upregulates the effector functions of eosinophils through beta(2) integrin and CXCR3. *Respir Res*. 2011; 12: 138.
- 9 Satoh H, Inoue A, Kobayashi K, et al. Low-Dose Gefitinib Treatment for Patients with Advanced Non-small Cell Lung Cancer Harboring Sensitive Epidermal Growth Factor Receptor Mutations. *J Thorac Oncol*. 2011; 6: 1413-7.
- 10 Nakagome K, Imamura M, Okada H, et al. Dopamine d1-like receptor antagonist attenuates th17-mediated immune response and ovalbumin antigen-induced neutrophilic airway inflammation. *J Immunol*. 2011; 186: 5975-82.
- 11 Hirama T, Yamaguchi T, Miyazawa H, et al. Prediction of the Pathogens That Are the Cause of Pneumonia by the Battlefield Hypothesis. *PLoS ONE*. 2011; 6: e24474:1-11.
- 12 Hirama T, Hagiwara K, Kanazawa M. Tuberculosis screening programme using the QuantiFERON-TB Gold test and chest computed tomography for healthcare workers accidentally exposed to patients with tuberculosis. *J Hosp Infect*. 2011; 77: 257-62.
- 13 Hagiwara K, Morino H, Shiihara J, et al. Homozygosity mapping on homozygosity haplotype analysis to detect recessive disease-causing genes from a small number of unrelated, outbred patients. *PLoS ONE*. 2011; 6: e25059.
- 14 Brehm JM, Hagiwara K, Tesfaigzi Y, et al. Identification of FGF7 as a novel susceptibility locus for chronic obstructive pulmonary disease. *Thorax*. 2011; 66: 1085-90.
- 15 Yamaguchi T, Soma T, Takaku Y, et al. Salbutamol modulates the balance of Th1 and Th2 cytokines by mononuclear cells from allergic asthmatics. *Int Arch Allergy Immunol*. 2010; 152 Suppl 1: 32-40.
- 16 Tanaka T, Matsuoka M, Sutani A, et al. Frequency of and variables associated with the EGFR mutation and its subtypes. *Int J Cancer*. 2010; 126: 651-5.