

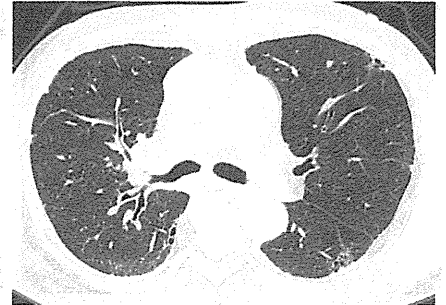
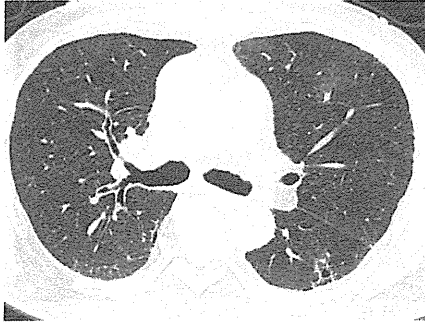
男性

疑われる原因薬剤： docetaxel

増悪前CT画像

増悪時CT画像

増悪後CT画像



2009/04/30

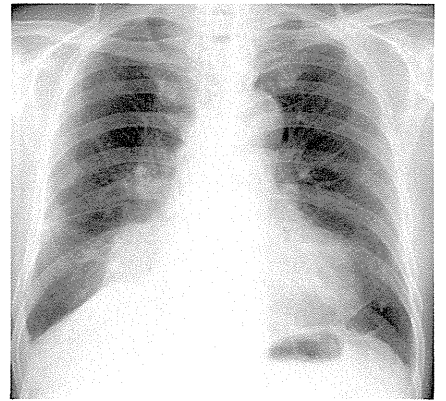
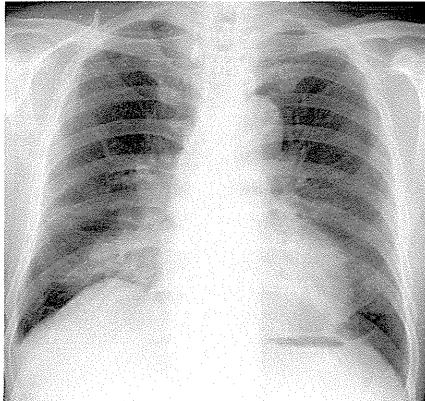
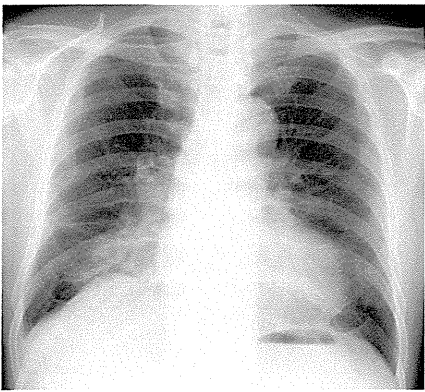
2009/05/21

2009/09/30

増悪前XP

増悪時XP

増悪後XP



2009/04/30

2009/05/21

2009/09/30

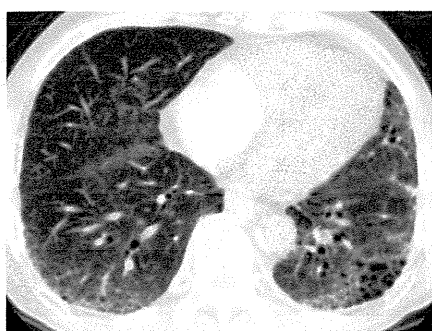
男性

疑われる原因薬剤： docetaxel

増悪前CT画像

増悪時CT画像

増悪後CT画像



2009/06/08



2009/06/28

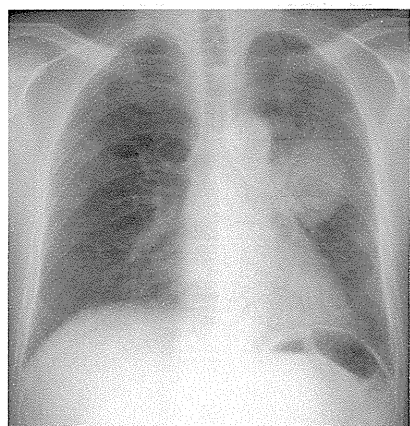


2009/07/06

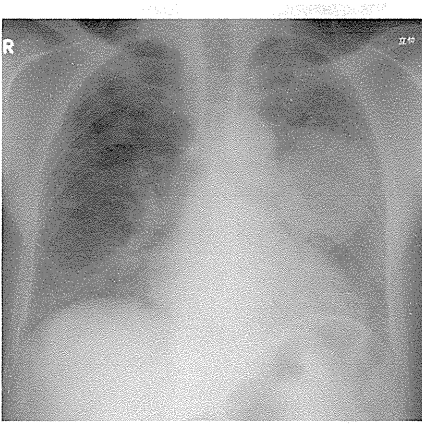
増悪前XP

増悪時XP

増悪後XP



2009/06/08



2009/06/28



2009/07/06

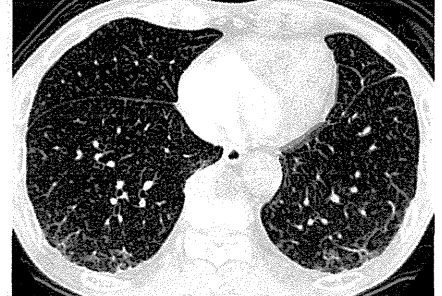
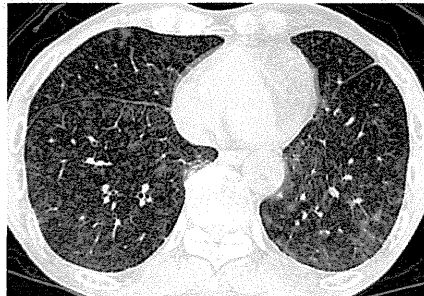
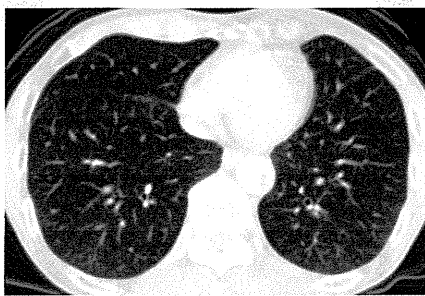
男性

疑われる原因薬剤： docetaxel

増悪前CT画像

増悪時CT画像

増悪後CT画像



2009/04/27

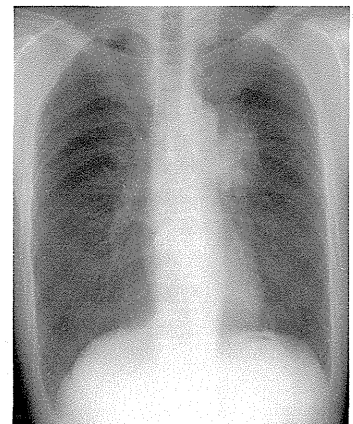
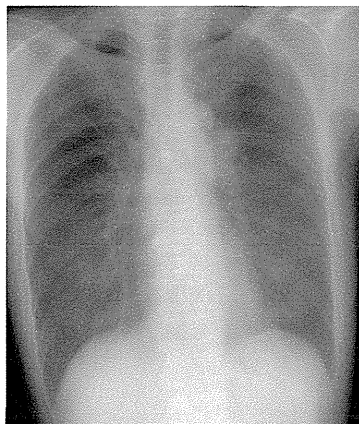
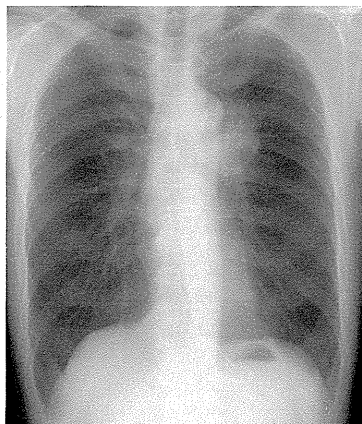
2009/07/08

2009/09/16

増悪前XP

増悪時XP

増悪後XP



2009/05/18

2009/07/08

2009/10/05

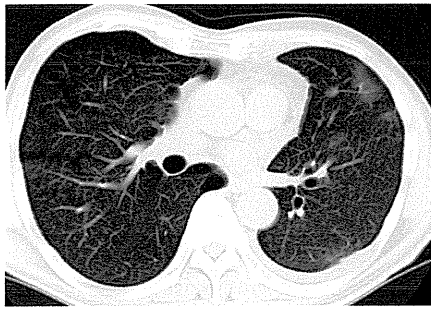
男性

疑われる原因薬剤： docetaxel

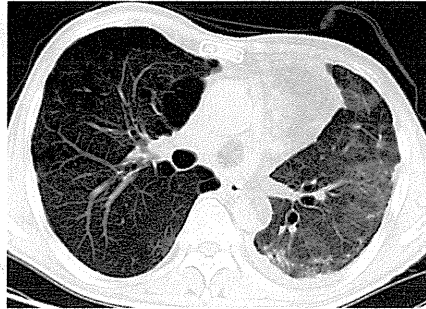
増悪前CT画像

増悪時CT画像

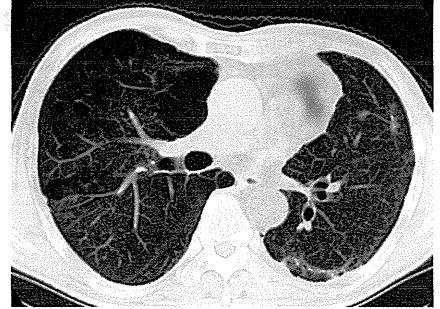
増悪後CT画像



2009/09/28



2009/11/11

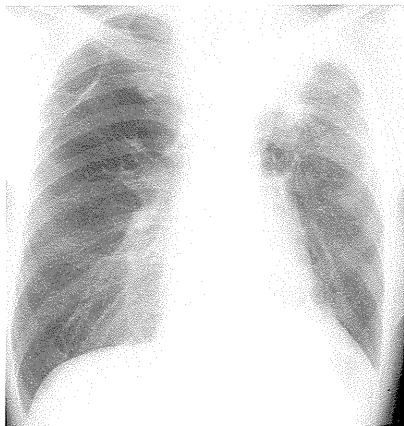


2010/01/13

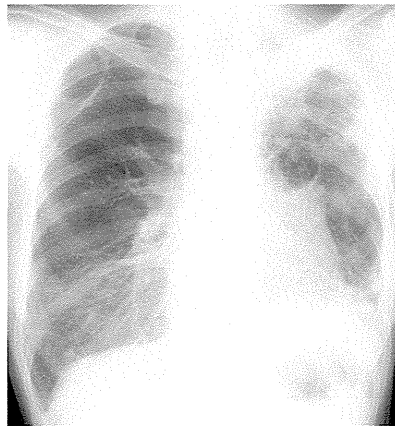
増悪前XP

増悪時XP

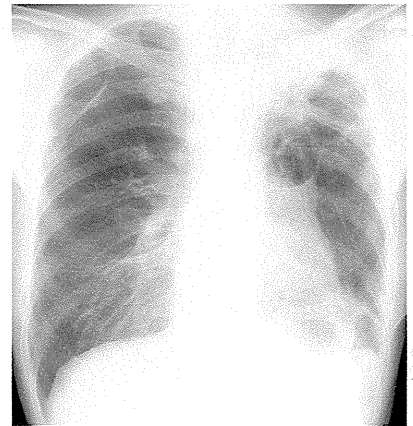
増悪後XP



2009/09/28



2009/11/10



2010/01/04

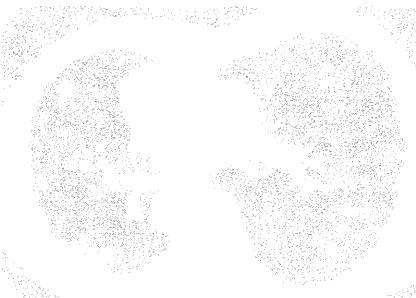
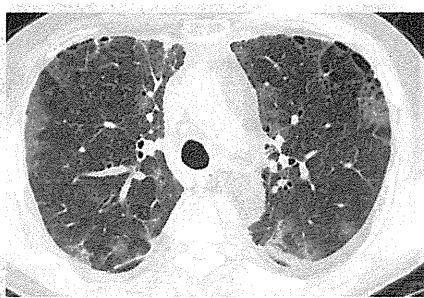
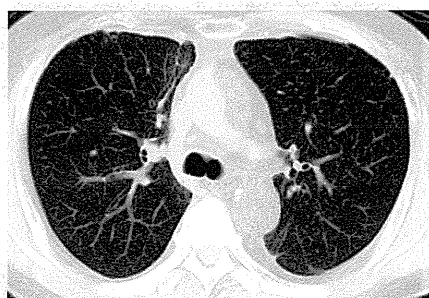
男性

疑われる原因薬剤： docetaxel

増悪前CT画像

増悪時CT画像

増悪後CT画像



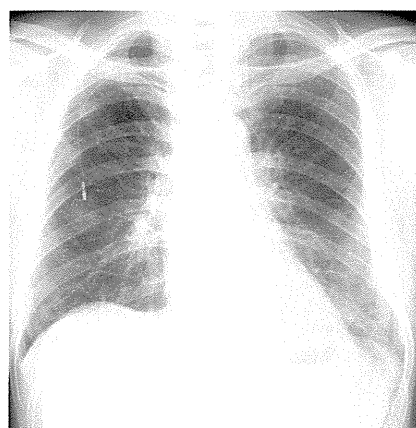
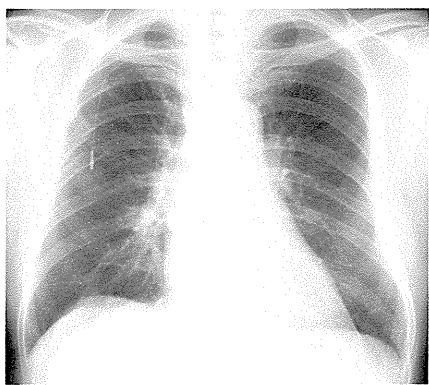
2009/08/27

2010/01/21

増悪前XP

増悪時XP

増悪後XP



2009/09/01

2010/01/21

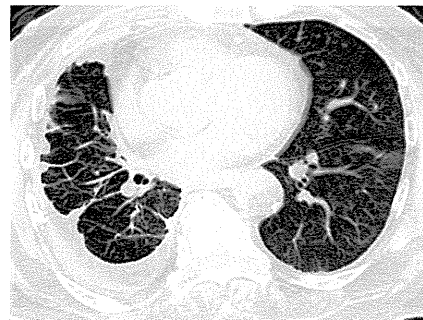
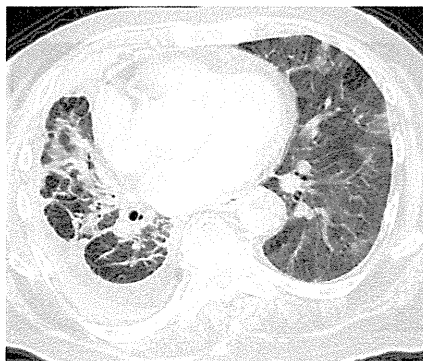
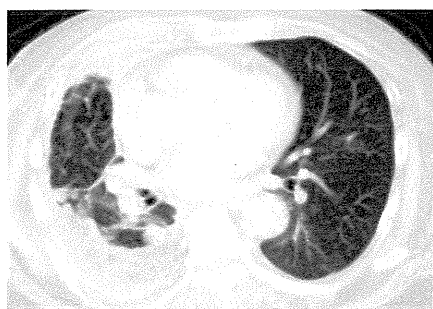
女性

疑われる原因薬剤： docetaxel

増悪前CT画像

増悪時CT画像

増悪後CT画像



2010/01/18

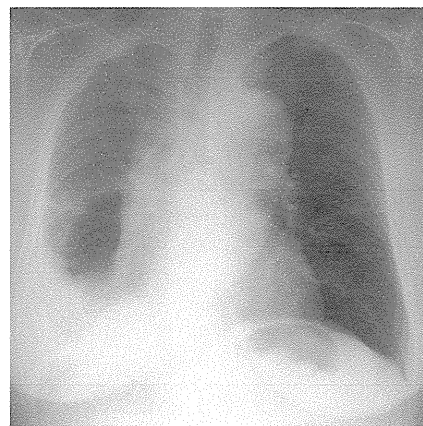
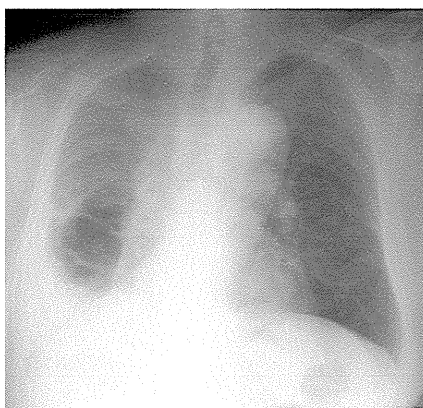
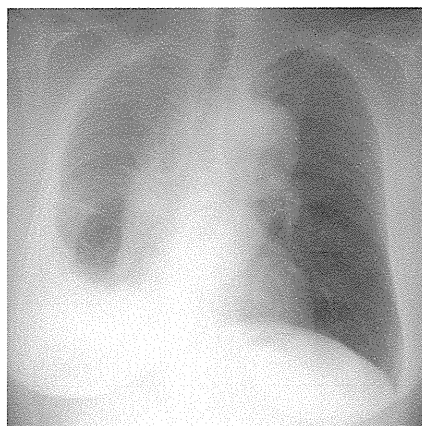
2010/03/03

2010/03/17

増悪前XP

増悪時XP

増悪後XP



2010/01/08

2010/03/03

2010/03/17

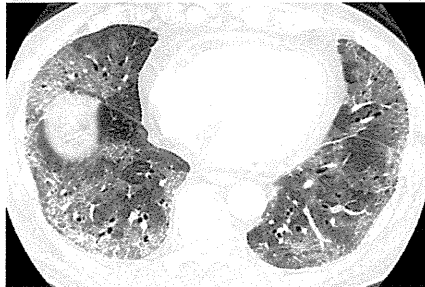
男性

疑われる原因薬剤： docetaxel

増悪前CT画像

増悪時CT画像

増悪後CT画像



2010/03/03

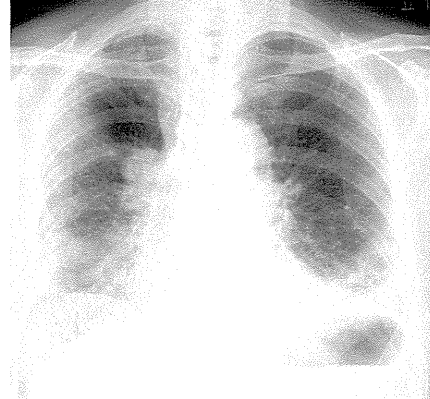
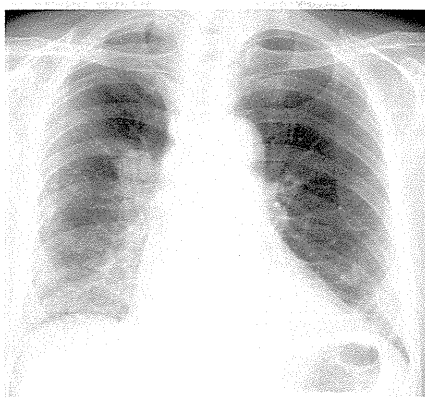
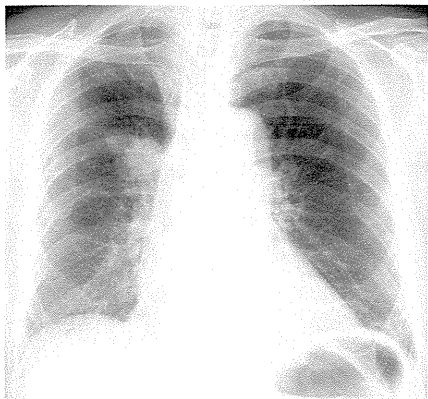
2010/04/08

2010/04/19

増悪前XP

増悪時XP

増悪後XP



2010/03/04

2010/04/08

2010/04/19

男性

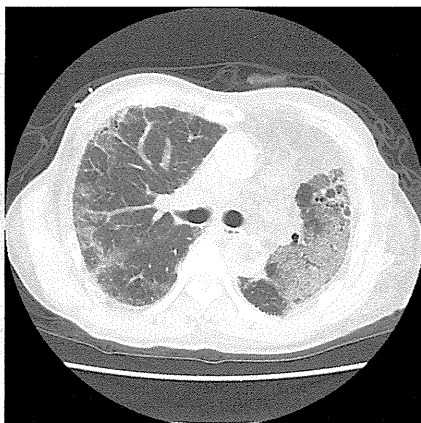
疑われる原因薬剤： docetaxel

増悪前CT画像



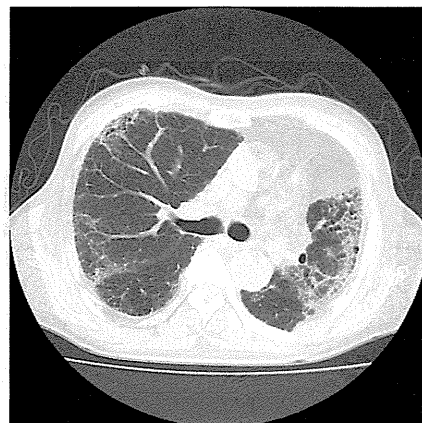
2010.03.18

増悪時CT画像



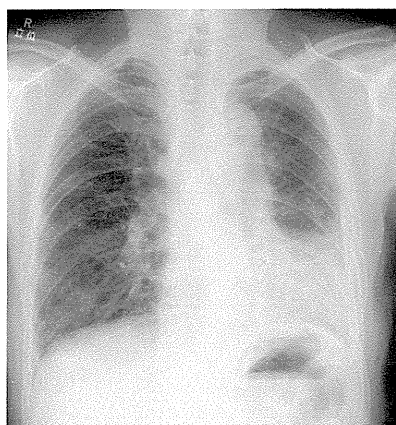
2010.04.26

増悪後CT画像



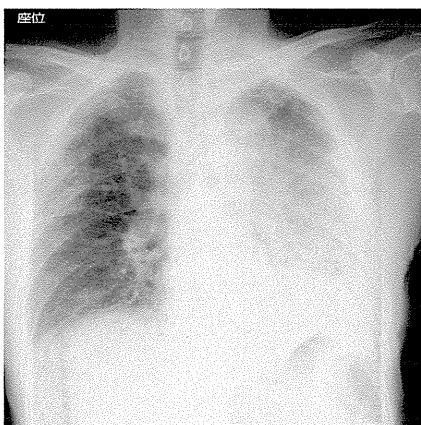
2010.05.19

増悪前XP



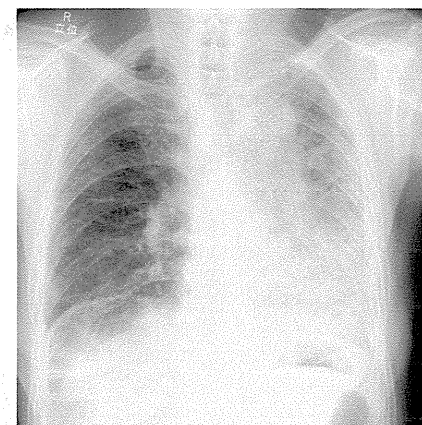
2010.03.17

増悪時XP



2010.04.26

増悪後XP

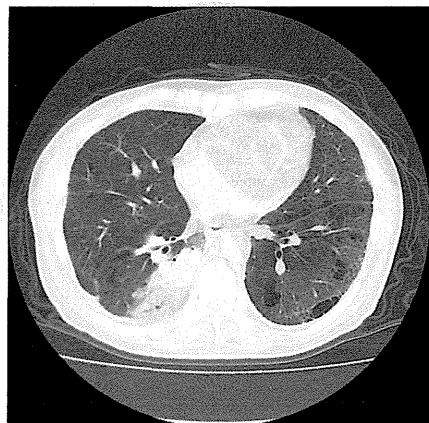


2010.05.17

男性

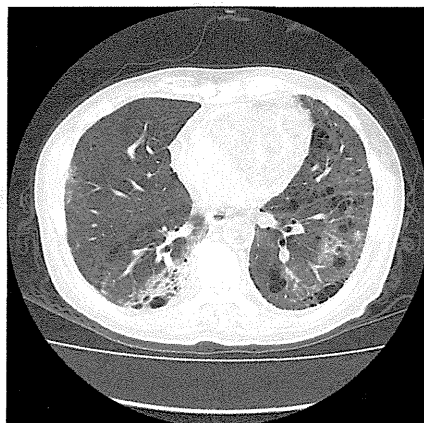
疑われる原因薬剤： docetaxel

増悪前CT画像



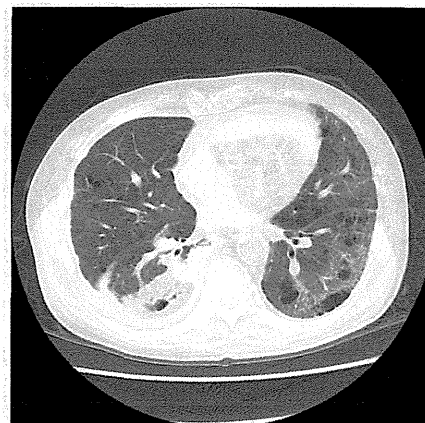
2010.03.02

増悪時CT画像



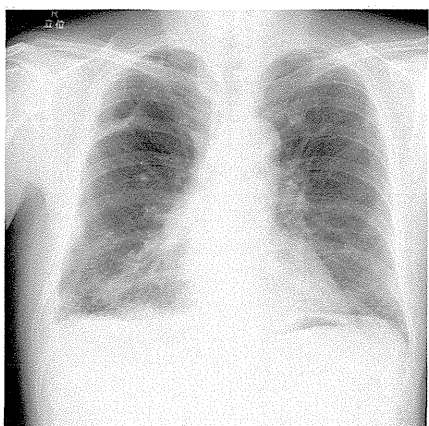
2010.04.16

増悪後CT画像



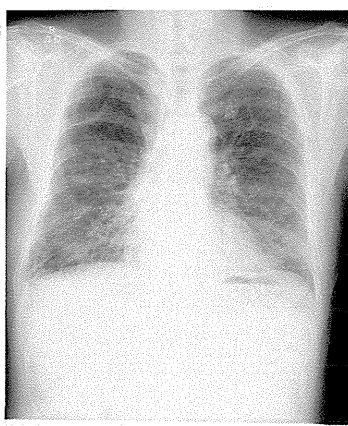
2010.07.16

増悪前XP



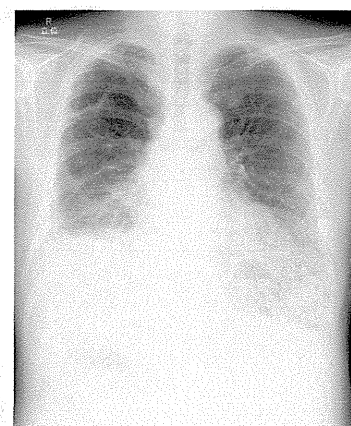
2010.03.01

増悪時XP



2010.04.16

増悪後XP



2010.07.16

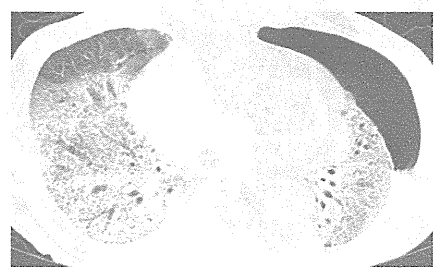
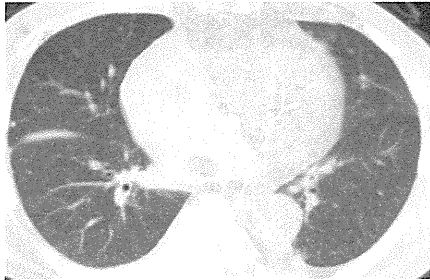
男性

疑われる原因薬剤： DOC

増悪前CT画像

増悪時CT画像

増悪後CT画像



2009/10/21

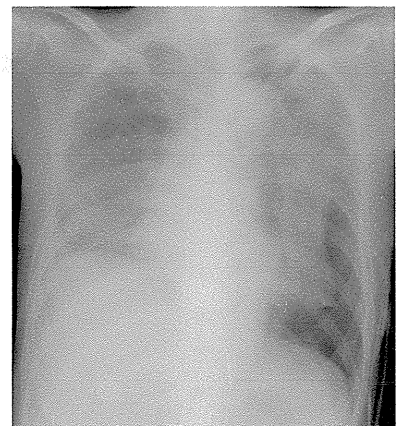
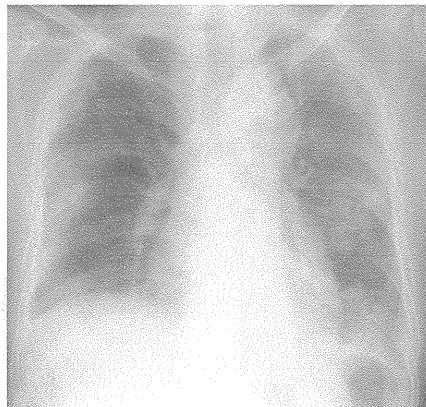
2010/08/16

2010/10/29

増悪前XP

増悪時XP

増悪後XP



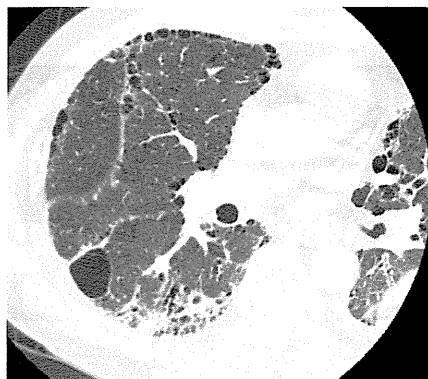
2010/08/16

2010/10/29

男性

疑われる原因薬剤： DOC

増悪前CT画像



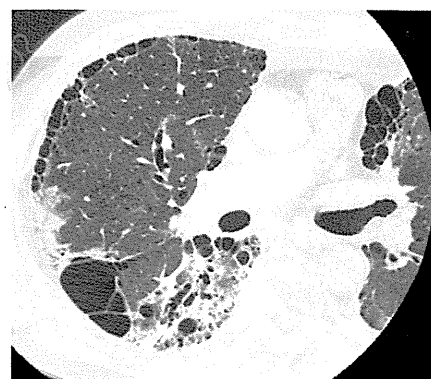
2010/12/13

増悪時CT画像



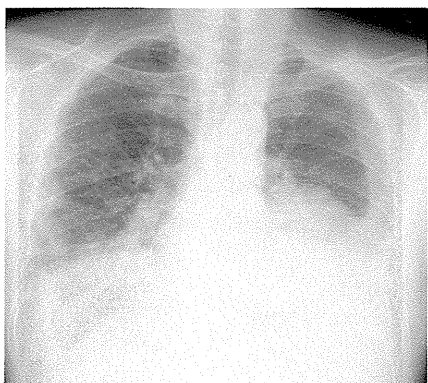
2011/01/31

増悪後CT画像



2011/02/25

増悪前XP



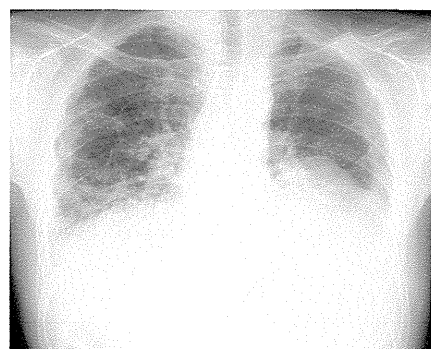
2010/12/22

増悪時XP



2011/01/31

増悪後XP



2011/02/28

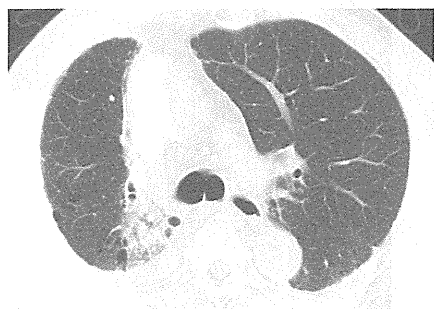
男性

疑われる原因薬剤： DOC

増悪前CT画像

増悪時CT画像

増悪後CT画像



2011/03/10

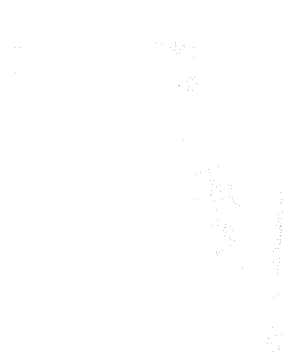


2011/04/12

増悪前XP

増悪時XP

増悪後XP



男性

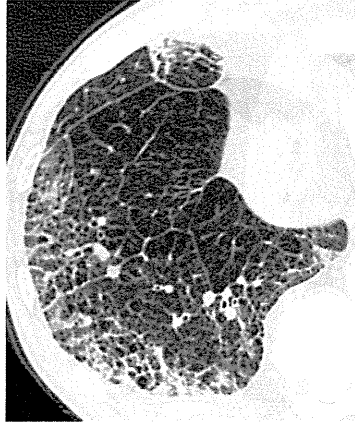
疑われる原因薬剤： DOC

増悪前CT画像



2010/02/26

増悪時CT画像



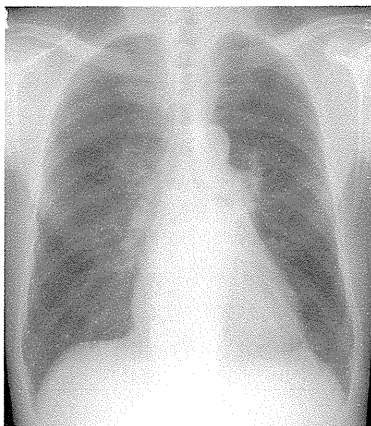
2010/04/12

増悪後CT画像



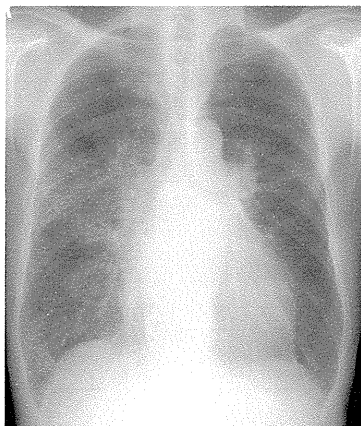
2010/05/20

増悪前XP



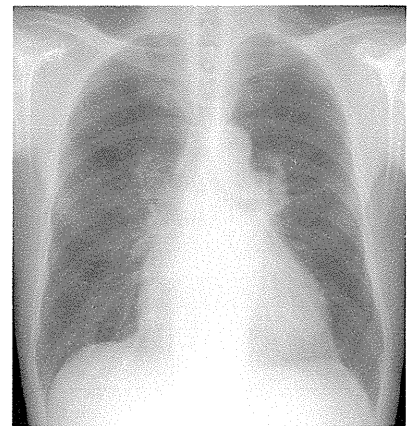
2010/03/04

増悪時XP



2010/04/12

増悪後XP



2010/05/20

研究成果の刊行に関する一覧表

英文論文

萩原弘一

萩原弘一（研究代表者）

- 1 Oizumi S, Kobayashi K, Inoue A, et al. Quality of Life with Gefitinib in Patients with EGFR-Mutated Non-Small Cell Lung Cancer: Quality of Life Analysis of North East Japan Study Group 002 Trial. *Oncologist*. 2012; 17: 863-70.
- 2 Kim ST, Jung HY, Sung JS, et al. Can Serum be Used for Analyzing the EGFR Mutation Status in Patients with Advanced Non-small Cell Lung Cancer? *Am J Clin Oncol*. 2012.
- 3 Ishii T, Hagiwara K, Kamio K, et al. Involvement of surfactant protein D in emphysema revealed by genetic association study. *Eur J Hum Genet*. 2012; 20: 230-5.
- 4 Ishii T, Hagiwara K, Ikeda S, et al. Association Between Genetic Variations In Surfactant Protein D and Emphysema, Interstitial Pneumonia, and Lung Cancer in a Japanese Population. *COPD*. 2012.
- 5 Inoue A, Kobayashi K, Maemondo M, et al. Updated overall survival results from a randomized phase III trial comparing gefitinib with carboplatin-paclitaxel for chemo-naive non-small cell lung cancer with sensitive EGFR gene mutations (NEJ002). *Ann Oncol*. 2012.
- 6 Huqun, Ishikawa R, Zhang J, et al. Enhancer of zeste homolog 2 is a novel prognostic biomarker in nonsmall cell lung cancer. *Cancer*. 2012; 118: 1599-606.
- 7 Goto K, Satouchi M, Ishii G, et al. An evaluation study of EGFR mutation tests utilized for non-small-cell lung cancer in the diagnostic setting. *Ann Oncol*. 2012.
- 8 Takaku Y, Nakagome K, Kobayashi T, Hagiwara K, Kanazawa M, Nagata M. IFN-gamma-inducible protein of 10 kDa upregulates the effector functions of eosinophils through beta(2) integrin and CXCR3. *Respir Res*. 2011; 12: 138.
- 9 Satoh H, Inoue A, Kobayashi K, et al. Low-Dose Gefitinib Treatment for Patients with Advanced Non-small Cell Lung Cancer Harboring Sensitive Epidermal Growth Factor Receptor Mutations. *J Thorac Oncol*. 2011; 6: 1413-7.
- 10 Nakagome K, Imamura M, Okada H, et al. Dopamine d1-like receptor antagonist attenuates th17-mediated immune response and ovalbumin antigen-induced neutrophilic airway inflammation. *J Immunol*. 2011; 186: 5975-82.
- 11 Hirama T, Yamaguchi T, Miyazawa H, et al. Prediction of the Pathogens That Are the Cause of Pneumonia by the Battlefield Hypothesis. *PLoS ONE*. 2011; 6: e24474:1-11.
- 12 Hirama T, Hagiwara K, Kanazawa M. Tuberculosis screening programme using the QuantiFERON-TB Gold test and chest computed tomography for healthcare workers accidentally exposed to patients with tuberculosis. *J Hosp Infect*. 2011; 77: 257-62.
- 13 Hagiwara K, Morino H, Shiihara J, et al. Homozygosity mapping on homozygosity haplotype analysis to detect recessive disease-causing genes from a small number of unrelated, outbred patients. *PLoS ONE*. 2011; 6: e25059.
- 14 Brehm JM, Hagiwara K, Tesfaigzi Y, et al. Identification of FGF7 as a novel susceptibility locus for chronic obstructive pulmonary disease. *Thorax*. 2011; 66: 1085-90.
- 15 Yamaguchi T, Soma T, Takaku Y, et al. Salbutamol modulates the balance of Th1 and Th2 cytokines by mononuclear cells from allergic asthmatics. *Int Arch Allergy Immunol*. 2010; 152 Suppl 1: 32-40.
- 16 Tanaka T, Matsuoka M, Sutani A, et al. Frequency of and variables associated with the EGFR mutation and its subtypes. *Int J Cancer*. 2010; 126: 651-5.

- 17 Takaku Y, Nakagome K, Kobayashi T, et al. Changes in airway inflammation and hyperresponsiveness after inhaled corticosteroid cessation in allergic asthma. *Int Arch Allergy Immunol.* 2010; 152 Suppl 1: 41-6.
- 18 Sadakata R, Hatamochi A, Kodama K, et al. Ehlers-Danlos syndrome type IV, vascular type, which demonstrated a novel point mutation in the COL3A1 gene. *Intern Med.* 2010; 49: 1797-800.
- 19 Maruyama H, Morino H, Ito H, et al. Mutations of optineurin in amyotrophic lateral sclerosis. *Nature.* 2010; 465: 223-6.
- 20 Maemondo M, Inoue A, Kobayashi K, et al. Gefitinib or chemotherapy for non-small-cell lung cancer with mutated EGFR. *N Engl J Med.* 2010; 362: 2380-8.
- 21 Huqun, Fukuyama S, Morino H, et al. A quantitatively-modeled homozygosity mapping algorithm, qHomozygosityMapping, utilizing whole genome single nucleotide polymorphism genotyping data. *BMC Bioinformatics.* 2010; 11 Suppl 7: S5.
- 22 Hagiwara K, Johkoh T, Tachibana T. Pulmonary Alveolar Microlithiasis. In: Panos R, Trapnell B, McCormack F, eds. *Molecular Basis of Lung Disease, Insights from Rare Lung Disorders: Humana Press*, 2010.
- 23 2011 日本肺癌学会 「肺癌患者における A L K 遺伝子検査の手引き」作成委員
- 24 2011 日本呼吸器学会 「特発性間質性肺炎 診断と治療の手引き」作成委員
- 25 2009 日本肺癌学会 「肺癌患者における E G F R 遺伝子変異検査の解説」作成委員
- 26 平成 23 年 4 月 平成 23 年度 科学技術分野の文部科学大臣表彰 科学技術賞 開発部門「EGFR 遺伝子変異迅速高感度検出法の開発」(萩原弘一, 長井良昭, 宮澤仁志, 田中知明, 小林国彦)

酒井文和 (研究分担者)

- 1 Sakai F, Tominaga J, Kaga A, et al. Imaging diagnosis of interstitial pneumonia with emphysema (combined pulmonary fibrosis and emphysema). *Pulm Med.* 2012; 2012: 816541.
- 2 Sakai F, Johkoh T, Kusumoto M, Arakawa H, Takahashi M. Drug-induced interstitial lung disease in molecular targeted therapies: high-resolution CT findings. *Int J Clin Oncol.* 2012.
- 3 Nakajima R, Sakai F, Mimura T, Tokuda H, Takahashi M, Kimura F. Acute- or Subacute-Onset Lung Complications in Treating Patients with Rheumatoid Arthritis. *Can Assoc Radiol J.* 2012.
- 4 Matsui S, Hebisawa A, Sakai F, et al. Immunoglobulin G4-related lung disease: clinicoradiological and pathological features. *Respirology.* 2012.
- 5 Kawabata Y, Takemura T, Hebisawa A, et al. Desquamative interstitial pneumonia may progress to lung fibrosis as characterized radiologically. *Respirology.* 2012; 17: 1214-21.
- 6 Kadooka Y, Tominari K, Sakai F, Yasui H. Prevention of rotavirus-induced diarrhea by preferential secretion of IgA in breast milk via maternal administration of *Lactobacillus gasseri* SBT2055. *J Pediatr Gastroenterol Nutr.* 2012; 55: 66-71.
- 7 Hosoya T, Ogawa A, Sakai F, Kadooka Y. A cheese-containing diet modulates immune responses and alleviates dextran sodium sulfate-induced colitis in mice. *J Dairy Sci.* 2012; 95: 2810-8.
- 8 Kameda H, Tokuda H, Sakai F, et al. Clinical and radiological features of acute-onset diffuse interstitial lung diseases in patients with rheumatoid arthritis receiving treatment with biological agents: importance of *Pneumocystis pneumonia* in Japan revealed by a multicenter study. *Intern Med.* 2011; 50: 305-13.
- 9 Arakawa H, Johkoh T, Sakai F, Kusumoto M, Hataji O, Taguchi O. Exacerbation of radiation fibrosis with erlotinib: another pattern of radiation recall phenomenon. *Jpn J Radiol.* 2011; 29: 587-9.
- 10 Tasaka S, Tokuda H, Sakai F, et al. Comparison of clinical and radiological features of *pneumocystis pneumonia* between malignancy cases and acquired immunodeficiency syndrome cases: a multicenter study. *Intern Med.* 2010; 49: 273-81.
- 11 Kimura F, Umezawa T, Asano T, et al. Coronary computed tomography angiography using prospective electrocardiography-gated axial scans with 64-detector computed tomography: evaluation of stair-step

artifacts and padding time. *Jpn J Radiol.* 2010; 28: 437-45.

- 12 Kimura F, Matsuo Y, Nakajima T, et al. Myocardial fat at cardiac imaging: how can we differentiate pathologic from physiologic fatty infiltration? *Radiographics.* 2010; 30: 1587-602.
- 13 Higuchi W, Mimura S, Kurosawa Y, et al. Emergence of the community-acquired methicillin-resistant *Staphylococcus aureus* USA300 clone in a Japanese child, demonstrating multiple divergent strains in Japan. *J Infect Chemother.* 2010; 16: 292-7.

田口善夫 (研究分担者)

- 1 Ikezoe K, Tanaka E, Tanizawa K, et al. Bilateral dissemination of malignant pleural mesothelioma via iatrogenic buffalo chest: a rare route of disease progression. *Gen Thorac Cardiovasc Surg.* 2012; 60: 595-8.
- 2 Taniguchi H, Kondoh Y, Ebina M, et al. The clinical significance of 5% change in vital capacity in patients with idiopathic pulmonary fibrosis: extended analysis of the pirfenidone trial. *Respir Res.* 2011; 12: 93.
- 3 Azuma A, Taguchi Y, Ogura T, et al. Exploratory analysis of a phase III trial of pirfenidone identifies a subpopulation of patients with idiopathic pulmonary fibrosis as benefiting from treatment. *Respir Res.* 2011; 12: 143.
- 4 Tanizawa K, Tanaka E, Hashimoto S, et al. Paradoxical development of a sarcoid-like reaction during successful chemotherapy for seminoma. *Intern Med.* 2010; 49: 1423-6.
- 5 Tanizawa K, Sakamoto J, Hashimoto S, et al. Chylopericardium caused by non-small cell lung cancer: a rare complication of superior vena cava syndrome. *J Thorac Oncol.* 2010; 5: 1303-4.
- 6 Tanizawa K, Kaji Y, Tanaka E, et al. Massive eosinophilic pleural effusion preceding vasculitic symptoms in Churg-Strauss syndrome. *Intern Med.* 2010; 49: 841-5.
- 7 Tanizawa K, Fukunaga K, Okumura N, et al. Successful chemotherapy for small-cell lung cancer in an elderly patient undergoing continuous ambulatory peritoneal dialysis. *Intern Med.* 2010; 49: 1179-83.
- 8 Taniguchi H, Ebina M, Kondoh Y, et al. Pirfenidone in idiopathic pulmonary fibrosis. *Eur Respir J.* 2010; 35: 821-9.

本間栄 (研究分担者)

- 1 Sugino K, Gocho K, Ishida F, et al. Acquired Hemophilia A Associated with IgG4-related Lung Disease in a Patient with Autoimmune Pancreatitis. *Intern Med.* 2012; 51: 3151-4.
- 2 Sakamoto S, Kikuchi N, Ichikawa A, et al. Everolimus-induced Pneumonitis after Drug-eluting Stent Implantation: A Case Report. *Cardiovasc Intervent Radiol.* 2012.
- 3 Isobe K, Hata Y, Sakaguchi S, et al. Pathological response and prognosis of stage III non-small cell lung cancer patients treated with induction chemoradiation. *Asia Pac J Clin Oncol.* 2012; 8: 260-6.
- 4 Isobe K, Hata Y, Kobayashi K, et al. Clinical significance of circulating tumor cells and free DNA in non-small cell lung cancer. *Anticancer Res.* 2012; 32: 3339-44.
- 5 Homma S, Suzuki A, Sato K. Pulmonary involvement in ANCA-associated vasculitis from the view of the pulmonologist. *Clin Exp Nephrol.* 2012.
- 6 Homma S, Azuma A, Taniguchi H, et al. Efficacy of inhaled N-acetylcysteine monotherapy in patients with early stage idiopathic pulmonary fibrosis. *Respirology.* 2012; 17: 467-77.
- 7 Sugino K, Hebisawa A, Uekusa T, Hatanaka K, Abe H, Homma S. Histopathological bronchial reconstruction of human bronchiolitis obliterans. *Pathol Int.* 2011; 61: 192-201.
- 8 Sakamoto S, Homma S, Mun M, Fujii T, Kurosaki A, Yoshimura K. Acute exacerbation of idiopathic interstitial pneumonia following lung surgery in 3 of 68 consecutive patients: a retrospective study. *Intern Med.* 2011; 50: 77-85.

- 9 Tanaka N, Kusunoki Y, Kaneko K, et al. Systemic lupus erythematosus complicated by recurrent pneumothorax: Case report and literature review. *Nihon Rinsho Meneki Gakkai Kaishi*. 2010; 33: 162-8.
- 10 Sakamoto S, Homma S, Miyamoto A, Kurosaki A, Fujii T, Yoshimura K. Cyclosporin A in the treatment of acute exacerbation of idiopathic pulmonary fibrosis. *Intern Med*. 2010; 49: 109-15.
- 11 Ito T, Sugino K, Satoh D, et al. Bird fancier's lung which developed in a pigeon breeder presenting organizing pneumonia. *Intern Med*. 2010; 49: 2605-8.
- 12 Hata Y, Isobe K, Sasamoto S, et al. Pulmonary hamartoma diagnosed by convex probe endobronchial ultrasound-guided transbronchial needle aspiration (EBUS-TBNA). *Intern Med*. 2010; 49: 1171-3.
- 13 Gocho K, Isobe K, Kaburaki K, et al. Malignant pleural mesothelioma presenting as an acute surgical abdomen due to metastatic jejunal perforation. *Intern Med*. 2010; 49: 597-601.

谷口博之 (研究分担者)

- 1 Watanabe N, Taniguchi H, Kondoh Y, et al. Efficacy of Chemotherapy for Advanced Non-Small Cell Lung Cancer with Idiopathic Pulmonary Fibrosis. *Respiration*. 2012.
- 2 Takashima N, Kimura T, Watanabe N, et al. Prognosis in Patients with Non-Small Cell Lung Cancer Who Received Erlotinib Treatment and Subsequent Dose Reduction due to Skin Rash. *Onkologie*. 2012; 35: 747-52.
- 3 Sumikawa H, Johkoh T, Fujimoto K, et al. Usual interstitial pneumonia and nonspecific interstitial pneumonia: correlation between CT findings at the site of biopsy with pathological diagnoses. *Eur J Radiol*. 2012; 81: 2919-24.
- 4 Sakamoto K, Taniguchi H, Kondoh Y, et al. Acute exacerbation of IPF following diagnostic bronchoalveolar lavage procedures. *Respir Med*. 2012; 106: 436-42.
- 5 Sakamoto K, Hashimoto N, Kondoh Y, et al. Differential modulation of surfactant protein D under acute and persistent hypoxia in acute lung injury. *Am J Physiol Lung Cell Mol Physiol*. 2012; 303: L43-53.
- 6 Kotani H, Kishi R, Mouri A, et al. Influence of leukotriene pathway polymorphisms on clinical responses to montelukast in Japanese patients with asthma. *J Clin Pharm Ther*. 2012; 37: 112-6.
- 7 Homma S, Azuma A, Taniguchi H, et al. Efficacy of inhaled N-acetylcysteine monotherapy in patients with early stage idiopathic pulmonary fibrosis. *Respirology*. 2012; 17: 467-77.
- 8 Fujimoto K, Taniguchi H, Johkoh T, et al. Acute exacerbation of idiopathic pulmonary fibrosis: high-resolution CT scores predict mortality. *Eur Radiol*. 2012; 22: 83-92.
- 9 Abe S, Azuma A, Mukae H, et al. Polymyxin B-immobilized fiber column (PMX) treatment for idiopathic pulmonary fibrosis with acute exacerbation: a multicenter retrospective analysis. *Intern Med*. 2012; 51: 1487-91.
- 10 Taniguchi H, Kondoh Y, Ebina M, et al. The clinical significance of 5% change in vital capacity in patients with idiopathic pulmonary fibrosis: extended analysis of the pirfenidone trial. *Respir Res*. 2011; 12: 93.
- 11 Niwa T, Hasegawa R, Ryuge M, Kawase M, Kondoh Y, Taniguchi H. Benefits and risks associated with the R100 high frequency oscillatory ventilator for patients with severe hypoxaemic respiratory failure. *Anaesth Intensive Care*. 2011; 39: 1111-9.
- 12 Nishiyama O, Taniguchi H, Kondoh Y, et al. Phase II study of S-1 monotherapy as a first-line treatment for elderly patients with advanced nonsmall-cell lung cancer: the Central Japan Lung Study Group trial 0404. *Anticancer Drugs*. 2011; 22: 811-6.
- 13 Kawanami T, Yatera K, Fukuda K, et al. Diagnosis of fulminant pneumonia caused by *Legionella pneumophila* serogroup 8 with the sequence analysis of the 16S rRNA gene. *Tohoku J Exp Med*. 2011; 225: 65-9.
- 14 Kawanami T, Fukuda K, Yatera K, Kido M, Mukae H, Taniguchi H. A higher significance of anaerobes: the clone library analysis of bacterial pleurisy. *Chest*. 2011; 139: 600-8.

- 15 Ebina M, Taniguchi H, Miyasho T, et al. Gradual increase of high mobility group protein b1 in the lungs after the onset of acute exacerbation of idiopathic pulmonary fibrosis. *Pulm Med.* 2011; 2011: 916486.
- 16 Azuma A, Taguchi Y, Ogura T, et al. Exploratory analysis of a phase III trial of pirfenidone identifies a subpopulation of patients with idiopathic pulmonary fibrosis as benefiting from treatment. *Respir Res.* 2011; 12: 143.
- 17 Arizono S, Taniguchi H, Nishiyama O, et al. Improvements in quadriceps force and work efficiency are related to improvements in endurance capacity following pulmonary rehabilitation in COPD patients. *Intern Med.* 2011; 50: 2533-9.
- 18 Yokoyama T, Kondoh Y, Taniguchi H, et al. Noninvasive ventilation in acute exacerbation of idiopathic pulmonary fibrosis. *Intern Med.* 2010; 49: 1509-14.
- 19 Usami N, Yokoi K, Hasegawa Y, et al. Phase II study of carboplatin and gemcitabine as adjuvant chemotherapy in patients with completely resected non-small cell lung cancer: a report from the Central Japan Lung Study Group, CJLSG 0503 trial. *Int J Clin Oncol.* 2010; 15: 583-7.
- 20 Taniguchi H, Ebina M, Kondoh Y, et al. Pirfenidone in idiopathic pulmonary fibrosis. *Eur Respir J.* 2010; 35: 821-9.
- 21 Sato I, Yokoyama Y, Ryuge M, Taniguchi H, Arima H, Yoshioka S. Respiratory failure was improved by growth hormone substitution in a patient with hypopituitarism. *BMJ Case Rep.* 2010; 2010.
- 22 Sakamoto K, Taniguchi H, Kondoh Y, et al. Serum KL-6 in fibrotic NSIP: Correlations with physiologic and radiologic parameters. *Respir Med.* 2010; 104: 127-33.
- 23 Nishiyama O, Taniguchi H, Kondoh Y, et al. A simple assessment of dyspnoea as a prognostic indicator in idiopathic pulmonary fibrosis. *Eur Respir J.* 2010; 36: 1067-72.
- 24 Kondoh Y, Taniguchi H, Katsuta T, et al. Risk factors of acute exacerbation of idiopathic pulmonary fibrosis. *Sarcoidosis Vasc Diffuse Lung Dis.* 2010; 27: 103-10.
- 25 Kondoh Y, Taniguchi H, Kataoka K, et al. Prognostic factors in rapidly progressive interstitial pneumonia. *Respirology.* 2010; 15: 257-64.
- 26 Aso H, Kondoh Y, Taniguchi H, et al. Noninvasive ventilation in patients with acute exacerbation of pulmonary tuberculosis sequelae. *Intern Med.* 2010; 49: 2077-83.

滝澤始（研究分担者）

- 1 Wada H, Takizawa H. Future Treatment for COPD: Targeting Oxidative Stress and Its Related Signal. *Recent Pat Inflamm Allergy Drug Discov.* 2012.
- 2 Tsujimoto N, Saraya T, Kikuchi K, et al. High-resolution CT findings of patients with pulmonary nocardiosis. *J Thorac Dis.* 2012; 4: 577-82.
- 3 Sohara E, Saraya T, Honda K, et al. Guillain-Barre syndrome in two patients with respiratory failure and a review of the Japanese literature. *J Thorac Dis.* 2012; 4: 601-7.
- 4 Saraya T, Tanaka Y, Ohkuma K, et al. Massive tension pneumomediastinum. *Intern Med.* 2012; 51: 677.
- 5 Saraya T, Tanaka R, Fujiwara M, et al. Fluorodeoxyglucose (FDG) uptake in pulmonary rheumatoid nodules diagnosed by video-assisted thoracic surgery lung biopsy: two case reports and a review of the literature. *Mod Rheumatol.* 2012.
- 6 Nakajima A, Saraya T, Takata S, et al. The saw-tooth sign as a clinical clue for intrathoracic central airway obstruction. *BMC Res Notes.* 2012; 5: 388.
- 7 Nagatomo T, Saraya T, Masuda Y, et al. Two cases of bilateral bronchial artery varices: One with and one without bilateral coronary-to-pulmonary artery fistulas. Review and characterization of the clinical features of bronchial artery varices reported in Japan. *Clin Radiol.* 2012; 67: 1212-7.
- 8 Mikami Y, Yamauchi Y, Horie M, et al. Tumor necrosis factor superfamily member LIGHT induces epithelial-

- mesenchymal transition in A549 human alveolar epithelial cells. *Biochem Biophys Res Commun.* 2012; 428: 451-7.
- 9 Kurai D, Nakagaki K, Wada H, et al. Mycoplasma pneumoniae Extract Induces an IL-17-Associated Inflammatory Reaction in Murine Lung: Implication for Mycoplasmal Pneumonia. *Inflammation.* 2012.
 - 10 Takizawa H. Impact of air pollution on allergic diseases. *Korean J Intern Med.* 2011; 26: 262-73.
 - 11 Kamitani S, Yamauchi Y, Kawasaki S, et al. Simultaneous stimulation with TGF-beta1 and TNF-alpha induces epithelial mesenchymal transition in bronchial epithelial cells. *Int Arch Allergy Immunol.* 2011; 155: 119-28.
 - 12 Yamauchi Y, Kohyama T, Takizawa H, et al. Tumor necrosis factor-alpha enhances both epithelial-mesenchymal transition and cell contraction induced in A549 human alveolar epithelial cells by transforming growth factor-beta1. *Exp Lung Res.* 2010; 36: 12-24.
 - 13 Li YJ, Takizawa H, Azuma A, et al. Nrf2 is closely related to allergic airway inflammatory responses induced by low-dose diesel exhaust particles in mice. *Clin Immunol.* 2010; 137: 234-41.
 - 14 Kohyama T, Yamauchi Y, Takizawa H, Kamitani S, Kawasaki S, Nagase T. Histamine stimulates human lung fibroblast migration. *Mol Cell Biochem.* 2010; 337: 77-81.

長谷川好規 (研究分担者)

- 1 Yoshida K, Sato M, Hase T, et al. TIMELESS is overexpressed in lung cancer and its expression correlates with poor patient survival. *Cancer Sci.* 2012.
- 2 Watanabe N, Taniguchi H, Kondoh Y, et al. Efficacy of Chemotherapy for Advanced Non-Small Cell Lung Cancer with Idiopathic Pulmonary Fibrosis. *Respiration.* 2012.
- 3 Tanaka I, Imaizumi K, Hashimoto I, et al. Interstitial pneumonia and nodular regenerative hyperplasia of the liver as initial manifestations of polyarteritis nodosa. *Intern Med.* 2012; 51: 635-8.
- 4 Suganuma N, Ito S, Aso H, et al. STIM1 regulates platelet-derived growth factor-induced migration and Ca²⁺ influx in human airway smooth muscle cells. *PLoS One.* 2012; 7: e45056.
- 5 Shinjo K, Okamoto Y, An B, et al. Integrated analysis of genetic and epigenetic alterations reveals CpG island methylator phenotype associated with distinct clinical characters of lung adenocarcinoma. *Carcinogenesis.* 2012; 33: 1277-85.
- 6 Sato M, Shames DS, Hasegawa Y. Emerging evidence of epithelial-to-mesenchymal transition in lung carcinogenesis. *Respirology.* 2012; 17: 1048-59.
- 7 Sashio T, Kume H, Takeda N, et al. Possible Involvement of Sphingosine-1-Phosphate/G(i)/RhoA pathways in adherence of eosinophils to pulmonary endothelium. *Allergol Int.* 2012; 61: 283-93.
- 8 Sakamoto K, Taniguchi H, Kondoh Y, et al. Acute exacerbation of IPF following diagnostic bronchoalveolar lavage procedures. *Respir Med.* 2012; 106: 436-42.
- 9 Sakamoto K, Hashimoto N, Kondoh Y, et al. Differential modulation of surfactant protein D under acute and persistent hypoxia in acute lung injury. *Am J Physiol Lung Cell Mol Physiol.* 2012; 303: L43-53.
- 10 Ohno T, Okamoto M, Hara T, et al. Detection of loci for allergic asthma using SMXA recombinant inbred strains of mice. *Immunogenetics.* 2012.
- 11 Oguri T, Imai N, Imaizumi K, et al. Febrile complications after endobronchial ultrasound-guided transbronchial needle aspiration for intra-pulmonary mass lesions of lung cancer-a series of 3 cases. *Respir Investig.* 2012; 50: 162-5.
- 12 Ogawa S, Horio Y, Yatabe Y, et al. Patterns of recurrence and outcome in patients with surgically resected small cell lung cancer. *Int J Clin Oncol.* 2012; 17: 218-24.
- 13 Nakashima H, Hashimoto N, Aoyama D, et al. Involvement of the transcription factor twist in phenotype alteration through epithelial-mesenchymal transition in lung cancer cells. *Mol Carcinog.* 2012; 51: 400-10.