

Table S1. Association of smoking status or BMI with the presence of rhinitis and/or asthma (20–44 years).

Table S2. Association of smoking status or BMI with the presence of rhinitis and/or asthma (45–79 years).

Please note: Wiley-Blackwell are not responsible for the content or functionality of any supporting materials supplied by the authors. Any queries (other than missing material) should be directed to the corresponding author for the article.

References

- Guerra S, Sherrill DL, Martinez FD, Barbee RA. Rhinitis as an independent risk factor for adult-onset asthma. *J Allergy Clin Immunol* 2002;**109**:419–425.
- Shaaban R, Zureik M, Soussan D, Neukirch C, Heinrich J, Sunyer J et al. Rhinitis and onset of asthma: a longitudinal population-based study. *Lancet* 2008;**372**:1049–1057.
- Bugiani M, Carosso A, Migliore E, Piccioni P, Corsico A, Olivieri M et al. Allergic rhinitis and asthma comorbidity in a survey of young adults in Italy. *Allergy* 2005;**60**:165–170.
- Crystal-Peters J, Nelsun C, Crown WH, Torres A. Treating allergic rhinitis in patients with comorbid asthma: the risk of asthma-related hospitalizations and emergency department visits. *J Allergy Clin Immunol* 2002;**109**:57–62.
- Corren J, Manning BE, Thompson SF, Hennessy S, Strom BL. Rhinitis therapy and the prevention of hospital care for asthma: A case-control study. *J Allergy Clin Immunol* 2004;**113**:415–419.
- Bousquet J, Jacquot W, Vignola AM, Bachert C, Cauwenberge PV. Allergic rhinitis: A disease remodeling the upper airways? *J Allergy Clin Immunol* 2004;**113**:43–49.
- Bousquet J, Vingola AM, Demoly P. Links between rhinitis and asthma. *Allergy* 2003;**58**:691–706.
- Cook DG, Strachan DP. Parental smoking and prevalence of respiratory symptoms and asthma in school age children. *Thorax* 1997;**52**:1081–1084.
- Tager IB, Hanrahan JP, Tosteson TD, Castile RG, Brown RW, Weiss ST et al. Lung function, pre- and post-natal smoke exposure, and wheezing in the first year of life. *Am Rev Respir Dis* 1993;**147**:811–817.
- Genuneit J, Weinmayr G, Radon K, Dressler H, Windstetter D, Rzehak P et al. Smoking and the incidence of asthma during adolescence: results of a large cohort study in Germany. *Thorax* 2006;**61**:572–578.
- Jamrozik E, Knuijan MW, James A, Divitini M, Musk AW. Risk factors for adult-onset asthma: a 14-year longitudinal study. *Respirology* 2009;**14**:814–821.
- Ford ES. The epidemiology of obesity and asthma. *J Allergy Clin Immunol* 2005;**115**:897–909.
- Beuther DA, Sutherland ER. Overweight, obesity, and incident asthma. A meta-analysis of prospective epidemiologic studies. *Am J Respir Crit Care Med* 2007;**175**:661–666.
- Nagata C, Nakamura K, Fujii K, Kawachi T, Takatsu N, Oba S et al. Smoking and risk of cedar pollinosis in Japanese men and women. *Int Arch Allergy Immunol* 2008;**147**:117–124.
- Kusunoki T, Morimoto T, Nishikomori R, Heike T, Ito M, Hosoi S et al. Obesity and the prevalence of allergic diseases in school-children. *Pediatr Allergy Immunol* 2008;**19**:527–534.
- Fukutomi Y, Nakamura H, Kobayashi F, Taniguchi M, Konno S, Nishimura M et al. Nationwide cross-sectional population-based study on the prevalences of asthma and asthma symptoms among Japanese adults. *Int Arch Allergy Immunol* 2010;**153**:280–287.
- Fukutomi Y, Taniguchi M, Nakamura H, Konno S, Nishimura M, Kawagishi Y et al. Association between body mass index and asthma among Japanese adults: risk within the normal weight range. *Int Arch Allergy Immunol* 2011;**157**:281–287.
- European Community Respiratory Health Survey. Variations in the prevalence of respiratory symptoms, self-reported asthma attacks, and use of asthma medication in the European Community Respiratory Health Survey (ECRHS). *Eur Respir J* 1996;**9**:687–695.
- Plaschke PP, Janson C, Norrman E, Bjornsson E, Ellbjar S, Jarvholm B. Onset and remission of allergic rhinitis and asthma and the relationship with atopic sensitization and smoking. *Am J Respir Crit Care Med* 2000;**162**:920–924.
- Olivieri M, Verlato G, Corsico A, Cascio VL, Bugiani M, Marioni A et al. Prevalence and features of allergic rhinitis in Italy. *Allergy* 2002;**57**:600–606.
- Leynaert B, Bousquet J, Henry C, Liard R, Neukirch F. Is bronchial hyperresponsiveness more frequent in women than in men? *Am J Respir Crit Care Med* 1997;**156**:1413–1420.
- Leynaert B, Bousquet J, Neukirch C, Liard R, Neukirch F. Perennial rhinitis: an independent risk factor for asthma in nonatopic subjects. Results from the European Community Respiratory Health Survey. *J Allergy Clin Immunol* 1999;**104**:301–304.
- Burney PGJ, Luczynska C, Chinn S, Jarvis D. The European Community Respiratory Health Survey. *Eur Respir J* 1994;**7**:954–960.
- European Community Respiratory Health Survey. Variations in the prevalence of respiratory symptoms, self-reported asthma attacks, and use of asthma medication in the European Community Respiratory Health Survey (ECRHS). *Eur Respir J* 1996;**9**:687–695.
- Janson C, Chinn S, Jarvis D, Burney P. Physician-diagnosed asthma and drug utilization in the European community respiratory health survey. *Eur Respir J* 1997;**10**:1795–1802.
- Watanabe J, Taniguchi M, Takahashi K, Nakagawa T, Ooya Y, Akazawa A et al. Validation of ECRHS questionnaire in Japanese to use for nation-wide prevalence study of adult asthma. *Aerugi* 2006;**55**:1421–1428. (article in Japanese).
- Hens G, Vanaudenaerde BM, Bullen DMA, Piessens M, Decramer M, Dupont JL et al. Sinonasal pathology in nonallergic asthma and COPD: ‘united airway disease’ beyond the scope of allergy. *Allergy* 2008;**63**:261–267.
- Montnemy P, Svensson C, Adelroth E, Lofdahl CG, Andersson M, Greiff L et al. Prevalence of nasal symptoms and their relation to self-reported asthma and chronic bronchitis/emphysema. *Eur Respir J* 2001;**17**:596–603.
- Roberts NJ, Lloyd-Owen SJ, Rapado F, Patel IS, Wilkinson TMA, Donaldson GC et al. Relationship between chronic nasal and respiratory symptoms in patients with COPD. *Respir Med* 2003;**97**:909–914.
- Sopori ML, Kozak W. Immunomodulatory effects of cigarette smoke. *J Neuroimmunol* 1998;**83**:148–156.
- Ouyang Y, Virasch N, Hao P, Aubrey MT, Mukerjee N, Bierer BE et al. Suppression of human IL-1b, IL-2, IFN-g, and TNF-a production by cigarette smoke extracts. *J Allergy Clin Immunol* 2000;**106**:280–287.
- Mishra NC, Rir-sima-ah J, Langley RJ, Singh SP, Pena-Philippodes JC, Koga T et al. Nicotine primarily suppresses lung Th2 but not goblet cell and muscle cell responses to allergens. *J Immunol* 2008;**180**:7655–7663.
- Melgert BN, Postma DS, Geerlings M, Luinge MA, Klok PA, van der Strate BWA et al. Short-term smoke exposure attenuates ovalbumin-induced airway inflammation in allergic mice. *Am J Respir Crit Care Med* 2004;**30**:880–885.

34. Moerloose KB, Pauwels RA, Joos GF. Short-term cigarette smoke exposure enhances allergic airway inflammation in mice. *Am J Respir Crit Care Med* 2005;**172**:168–172.
35. Botelho FM, Llop-Guevara A, Trimble NJ, Nikota JK, Bauer CMT, Lambert KN et al. Cigarette smoke differentially impacts eosinophilia and remodeling in a house dust mite asthma model. *Am J Respir Cell Mol Biol* 2011;**45**:753–760.
36. Johnston RA, Zhu M, Rivera-Sanchez YM, Lu FL, Theman TA, Flynt L et al. Allergic airway responses in obese mice. *Am J Respir Crit Care Med* 2007;**176**:650–658.
37. Gómez M, Vollmer WM, Caceres ME, Jossen R, Baena-Cagnani CE. Adolescent smokers are at greater risk for current asthma and rhinitis. *Int J Tuberc Lung Dis* 2009;**13**:1023–1028.
38. Annesi-Maesano I, Orszczyn MP, Raherison C, Kopferschmitt C, Pauli G, Taytard A et al. Increased prevalence of asthma and allied diseases among active adolescent tobacco smokers after controlling for passive smoking exposure. A cause for concern? *Clin Exp Allergy* 2004;**34**:1017–1023.
39. Kilpeläinen M, Terho EO, Helenius H, Koskenvuo M. Body mass index and physical activity in relation to asthma and atopic diseases in young adults. *Respir Med* 2006;**100**:1518–1525.

Association between obesity and asthma in Japanese preschool children

Yoshie Okabe¹, Yuichi Adachi¹, Toshiko Itazawa¹, Koichi Yoshida², Yukihiko Ohya³, Hiroshi Odajima⁴, Akira Akasawa² & Toshio Miyawaki¹

¹Department of Pediatrics, Faculty of Medicine, University of Toyama, Toyama; ²Division of Allergy, Tokyo Metropolitan Children's Hospital, Tokyo; ³Division of Allergy, National Center for Children Health and Development, Tokyo; ⁴Department of Pediatrics, Fukuoka National Hospital, Fukuoka, Japan

To cite this article: Okabe Y, Adachi Y, Itazawa T, Yoshida K, Ohya Y, Odajima H, Akasawa A, Miyawaki T. Association between obesity and asthma in Japanese preschool children. *Pediatric Allergy Immunology* 2012; **23**: 550–555.

Keywords

asthma; epidemiology; Japan; obesity; preschool children.

Correspondence

Yuichi Adachi, MD, PhD, Department of Pediatrics, Faculty of Medicine, University of Toyama, 2630 Sugitani, Toyama 930-0194, Japan.

Tel.: +81 76 434 7313

Fax: +81 76 434 5029

E-mail: yadachi@med.u-toyama.ac.jp

Accepted for publication 26 November 2011

DOI:10.1111/j.1399-3038.2011.01261.x

Abstract

Obesity may increase the risk of subsequent asthma. We have previously reported that there is a clear association between obesity and asthma in Japanese school-aged children.

To evaluate whether a similar association exists in younger children, a nationwide cross-sectional questionnaire-based survey was performed focusing on children aged 4–5 yr. A child who had experienced wheezing during the past 12 months and had ever been diagnosed with asthma by a physician was defined as having current asthma. Overweight and underweight were defined as BMI \geq 90th percentile and \leq 10th percentile, respectively, according to the reference values for Japanese children from 1978 to 1981.

After excluding 2547 children because of incomplete data, 34,699 children were analyzed. Current asthma was significantly more prevalent in overweight children compared with underweight and normal weight children (13.2% for overweight vs. 10.5% for underweight and 11.1% for normal weight; both $p < 0.001$). Even after adjusting for other variables, such as gender, other coexisting allergic diseases, and parental history of asthma, there was an association between overweight and current asthma (adjusted odds ratio: 1.23, 95% CI: 1.10–1.38, $p < 0.001$).

Even in preschool children, obesity is already associated with asthma, and there was no gender effect on this association. Physicians should consider the impact of obesity when managing asthma in younger children.

In the past few decades, the prevalence of both asthma and obesity has been increasing dramatically. In Japanese school-aged children, the prevalence of asthma and the prevalence of obesity have increased 2.1 times (1) and 2.5–2.6 times (2, 3), respectively, over the past 20 yr. Asthma and obesity often coexist, and obesity appears to worsen asthma control and increase asthma severity, resulting in increased numbers of prescribed medications and decreased quality of life for patients (4). Recently, many studies have shown a positive association between both disorders in school-aged children, adolescents, and adults (5–6). In contrast, there have been only a few studies performed to evaluate the association between obesity and asthma in preschool children. It has been recognized that both asthma and obesity have their beginnings in early life and that the effects of these disorders

continue throughout later life (7). For instance, despite the difficulty in diagnosing asthma in young children, the available data suggest that approximately 80% of childhood asthma is diagnosed by the age of 6 yr (1). Similarly, it was reported that one-third of obese preschool children were still obese as adults (8). Therefore, it is important to examine the associations between both disorders in early life.

When evaluating younger children, there have been methodological issues that made it difficult to clarify the association between asthma and obesity. One of the issues is a lack of a standard definition of asthma in preschool children (9). A questionnaire used by the International Study of Asthma and Allergy in Childhood (ISAAC), which has been widely used as a standard questionnaire for studying the prevalence of childhood asthma, was validated for use in the school-aged

children. Another issue is that a variety of definitions of child obesity have been used (10–11). Furthermore, most of the data regarding the impact of obesity on asthma were obtained from western countries, and few data from Asian countries have been reported. It has been known that there are ethnic differences in body composition including body mass index (BMI), body fat mass, and fat distribution between Asian and Caucasian children (12, 13).

To evaluate whether there is a relationship between obesity and asthma in Japanese preschool children, we conducted a nationwide survey, in which asthma was defined as parent-reported, physician-diagnosed asthma, and overweight was defined according to the reference values of BMI for Japanese children. We also assessed the effects of potential confounders such as gender, personal history of other allergic diseases, and parental history of asthma on the association between obesity and asthma.

Methods

Study population

This study was a cross-sectional and questionnaire-based survey performed in 3- to 6-yr-old children in Japan and carried out from April through July 2008. In order to perform a nationwide survey, kindergarten classes were randomly selected from all the prefectures. The total number of children recruited was 50,959, corresponding to approximately 2% of the pediatric population, according to the data provided by the National Institute of Population and Social Security Research. This study protocol was approved by the independent review board of the National Center for Child Health and Development.

Questionnaire

The survey used a Japanese version of the ISAAC questionnaire (5, 14), which was distributed through teachers of the participating kindergartens. The questionnaires were filled by the parents. The questionnaire also included questions regarding demographics, the latest data regarding the child's height and weight, the physician's diagnosis of allergic diseases, and the parental history of asthma. Current wheeze was defined as a positive answer to the question 'Has your child had wheezing or whistling in the chest during the last 12 months?' Among the current wheezers, a child whose parent answered positively to the question 'Has your child ever been diagnosed with asthma by a physician?' was defined as having current asthma. In Japan, asthma diagnosis in preschool children is commonly based on the following criteria described in the Japanese pediatric asthma guideline (15): (i) three or more episodes of airway obstruction that was documented by wheezing, decreased air entry, and dyspnea and/or (ii) improvement of airway obstruction following bronchodilator use.

Definition of underweight and overweight

The child's weight and height were determined by the questionnaire. BMI was calculated as body weight in kilograms

divided by height squared in meters (kg/m^2). The subjects were categorized into three groups based on the 10th and 90th percentiles, according to the reference values of BMI for Japanese children, which were determined during the 1978–1981 period (16). Children who were at the 10th percentile and less were defined as underweight, those at the >10th to <90th percentile were assigned to normal weight, and those with BMI \geq 90th percentile were defined as overweight.

Statistical analyses

The chi-square test was used to evaluate the gender differences and compare the prevalence of current asthma between groups. Multivariable analysis was performed to estimate the effects of body composition and other confounding factors on current asthma. A p value <0.05 was considered to be statistically significant. All analysis was performed using the statistical package of SPSS for Windows version 17.0J (SPSS Inc, Chicago, IL, USA).

Results

Of the 50,959 children aged 3–6 yr, 47,291 replied to the questionnaire (response rate: 92.8%). Because this population was mainly composed of 4- and 5-yr-old children, 37,246 children aged 4–5 yr were selected (78.9% of the enrolled children). Finally, after omitting incomplete data, 34,699 children were analyzed (Fig. 1). The baseline characteristics of the study population are shown in Table 1. According to the reference values of BMI for Japanese children obtained in the 1978–1981 period (16), 19.5% were categorized as underweight and 10.0% were defined as overweight, showing an increasing trend in the prevalence of underweight over the past few decades. There were gender differences; both underweight and overweight were more prevalent in boys. Boys were also more likely to have ever been diagnosed with

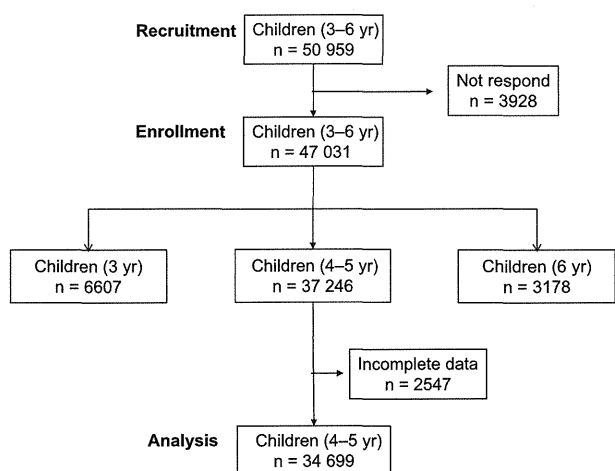


Figure 1 Participants in the cross-sectional and questionnaire-based survey.

Table 1 Baseline characteristics of the study participants

	Total (n = 34,699)	Boys (n = 17,569)	Girls (n = 17,130)	p Value*
Body composition				
Underweight	6751 (19.5)	3517 (20.0)	3234 (18.9)	0.004
Overweight	3479 (10.0)	1852 (10.5)	1627 (9.5)	0.001
Ever diagnosed with				
Bronchial asthma	5574 (16.1)	3389 (19.3)	2185 (12.8)	<0.001
Atopic dermatitis	5535 (16.0)	3046 (17.3)	2489 (14.5)	<0.001
Allergic rhinitis	6099 (17.6)	3574 (20.3)	2525 (14.7)	<0.001
Food allergy	3163 (9.1)	1905 (10.8)	1258 (7.3)	<0.001
Parental history				
Bronchial asthma	7283 (21.0)	3756 (21.4)	3527 (20.6)	0.037
Current wheeze	7058 (20.3)	4168 (23.7)	2890 (16.9)	<0.001
Current asthma	3883 (11.2)	2406 (13.7)	1477 (8.6)	<0.001

Data represent number (percentage).

*Chi-square analysis for evaluating gender differences.

bronchial asthma as well as atopic dermatitis, allergic rhinitis, and food allergy. Parents of more than 20% of the children had past or present history of bronchial asthma. During the previous 12 months, 20.3% of the children had experienced wheezing. According to our definition, 11.2% of the children were categorized as having current asthma. Compared with children with current wheeze who did not have a doctor's diagnosis of asthma, children with current asthma were significantly more likely to have comorbid allergic diseases other than asthma (18.0% vs. 31.4% for atopic dermatitis, 23.8% vs. 30.2% for allergic rhinitis, and 11.1% vs. 22.2% for food allergy; $p < 0.001$ for all, Table 2). A higher prevalence of parental history of asthma was also found in children with current asthma compared with children with current wheeze who did not have a doctor's diagnosis of asthma (27.7% vs. 43.0%, $p < 0.001$).

Current asthma was significantly more prevalent in overweight children compared with underweight and normal weight children (13.2% for overweight vs. 10.5% for underweight and 11.1% for normal weight; both $p < 0.001$). In

Table 2 Comorbidity of other allergic diseases and parental history of asthma in children with current wheeze

	Current wheeze without a doctor's diagnosis (n = 3175)	Current asthma (n = 3883)	p Value
Ever diagnosed with			
Atopic dermatitis	573 (18.0)	1218 (31.4)	<0.001
Allergic rhinitis	755 (23.8)	1174 (30.2)	<0.001
Food allergy	351 (11.1)	861 (22.2)	<0.001
Parental history			
Bronchial asthma	881 (27.7)	1669 (43.0)	<0.001

Data represent number (percentage).

contrast, there was no modifying effect of body composition on the prevalence of current wheeze without a doctor's diagnosis of asthma (Fig. 2). Additional factors other than body composition, such as gender, comorbidities of other allergic diseases, and parental history of asthma, are also known to be associated with the prevalence of current asthma. After adjusting for these confounders, multivariable logistic regression analysis revealed that obesity was still significantly associated with current asthma (adjusted odds ratio: 1.23, 95% CI: 1.10–1.38, $p < 0.001$). Furthermore, after stratified by gender, this association was still seen in both genders (Table 3).

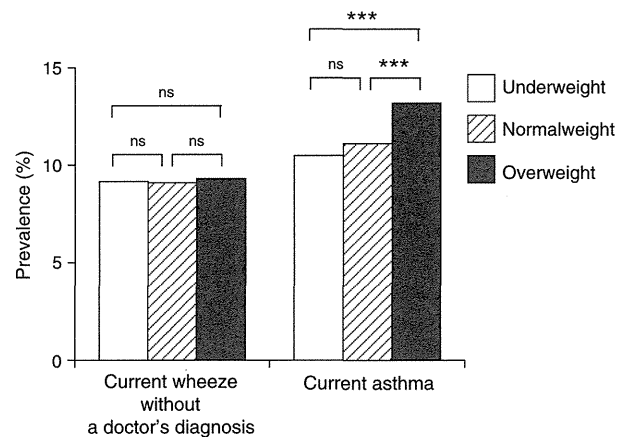


Figure 2 Effects of body composition on the prevalence of current wheeze in children without a doctor's diagnosis of asthma and current asthma. NS, not significant; *** $p < 0.001$.

Table 3 Association of underweight or overweight with current asthma

	Prevalence (%)	p Value	Adjusted OR	95% CI
Total*				
Underweight	10.5	0.099	0.93	0.85–1.02
Normal weight	11.1		1	
Overweight	13.2	<0.001	1.23	1.10–1.38
Boys**				
Underweight	12.5	0.124	0.91	0.81–1.03
Normal weight	13.7		1	
Overweight	15.6	0.015	1.19	1.04–1.38
Girls**				
Underweight	8.3	0.450	0.95	0.82–1.09
Normal weight	8.5		1	
Overweight	10.5	0.008	1.27	1.06–1.52

OR, odds ratio; CI, confidence interval.

*Adjusted for sex, parental history of asthma, lifetime diagnosis of atopic dermatitis, allergic rhinitis, and food allergy.

**Adjusted for parental history of asthma, lifetime diagnosis of atopic dermatitis, allergic rhinitis, and food allergy.

Discussion

We have previously reported that there is a clear association between obesity and current asthma in school-aged children (5). In this study, we also found a similar association between both disorders, even in preschool children. A paucity of adequate questionnaires is one of the obstacles encountered in evaluating the prevalence of asthma in young children, and this problem makes it difficult to clarify the association between asthma and obesity in this age population. Tai et al. (17) performed a survey of 1509 children aged 4–5 yr in South Australia using the ISAAC questionnaire and found a significant association between obesity and lifetime prevalence of doctor-diagnosed asthma, but the association with current symptoms (wheezing in the previous 12 months) was marginal. von Kries et al. (18) reported similar results from a survey of 9357 German children aged 5 and 6 yr using the ISAAC-based questionnaire. They found that an association with obesity was significant for lifetime prevalence of doctor-diagnosed asthma only. For current symptoms of asthma, only a trend was observed, but this was not significant. Although the ISAAC questionnaire has been used for many epidemiological studies in children, it was not validated for use in preschool children. Symptom-based core questions of the ISAAC questionnaire are not highly specific for asthma in this age group, because it has been well known that there are several phenotypes of wheezing. Hederos et al. (19) compared the parental assessment of asthma among their children aged 1–6 yr in response to a questionnaire with the corresponding medical records in Sweden and found that when adding one question regarding asthma diagnosis by a physician to the original ISAAC questionnaire, the sensitivity and specificity of the questionnaire for detecting clinically diagnosed asthma registered in the medical record were high (98% and 77%, respectively). In this study, we defined current asthma as having been diagnosed with asthma by a doctor among children who had experienced wheezing in the previous 12 months. Children with current asthma were more likely to have comorbid allergic diseases other than asthma and a parental history of asthma compared with children with current wheeze who did not have a doctor's diagnosis of asthma, suggesting that current asthma is predominately atopic in nature, while children with current wheeze who did not have a doctor's diagnosis of asthma are generally non-atopic in nature. Therefore, the definition used for asthma in this study might be more accurate for evaluating the prevalence of current asthma in young children compared with the original ISAAC definition. Furthermore, we found an association between obesity and current symptoms only in children with current asthma and not in children with current wheeze who did not have a doctor's diagnosis of asthma. Possible mechanisms underlying the relationship between asthma and obesity include mechanical changes associated with obesity, chronic systematic inflammation, and atopy (4). Inconsistent with our results, several studies have found that obesity was more strongly related to non-atopic than to atopic asthma in adults (20) and children (21). Additional studies are needed to clarify the relationship between obesity and atopy.

There are several other factors affecting the prevalence of asthma, such as gender, personal history of other allergic diseases, and parental history of asthma. In this study, even after adjustment for these factors, obesity was still associated with current asthma. There have been several reports showing gender difference in the impact of obesity on asthma. Cross-sectional data on 5- and 6-yr-old German children showed a 2.9-fold higher prevalence of doctor-diagnosed asthma in obese children compared with children with normal weight in girls but not in boys (18). In 517 preschool children of Hispanic national origin who lived in New York, the association between obesity and asthma was confined to girls (22). A similar gender-specific association was shown in school-aged children and adolescents (23, 24). In contrast, we did not find any evidence of effect modification by gender. Furthermore, in our previous study that showed an association of obesity with current asthma in school-aged children, the association was not different for boys and girls (5). These discrepancies between our findings and other published results might be explained by differences in subject ethnicities or socioeconomic status.

In the subjects of this study who aged 4–5 yr, 19.5% were categorized as underweight. Our previous study utilized the same reference values and showed that the prevalence rates of underweight by age were as follows: 15.3% in children aged 6–7 yr, 8% in children aged 13–14 yr, and 9.1% in children aged 16–17 yr (5). These data indicate that the increasing trend in the prevalence of underweight observed over the past few decades only occurred in younger children. In this study, there was no association between underweight status and current asthma. However, among children aged 2–11 yr in the United States, a U-shaped association between BMI and the probability of having asthma was reported for boys, but not for girls (25). Thus, future studies should focus not only on obesity, but also on underweight status as a risk factor for asthma.

One of the limitations of our study is that the cross-sectional study does not allow for the determination to be made as to whether obesity precedes the development of asthma or vice versa. A prospective study of children who were born in the United States and followed for up to 14 yr showed that, in 4393 children who were asthma-free during the first 24 months of life, a high BMI (>85th percentile) at age of 2–3 yr was a risk factor for subsequent asthma development in boys but not in girls (26). Another longitudinal study conducted in the Netherlands demonstrated that a high BMI at 6–7 yr was associated with an increased risk of dyspnea and bronchial hyper-reactivity at 8 yr (27); notably, children with a high BMI at a young age who developed a normal BMI at 6–7 yr did not have an increased risk of dyspnea or bronchial hyper-reactivity at 8 yr. Another cohort study that recruited children at high risk of asthma showed that late onset of obesity (being overweight at the age of 5 yr but not at the age of 1 yr) was associated with a high risk for asthma at the age of 6 and 8 yr (28). These findings suggest that there are complex relationships between gender, age, obesity, and asthma. Further studies will be needed to understand the mechanisms underlying the association of obesity with asthma in children.

Another limitation of this study was that we failed to account for several important confounding factors, such as birth weight, gestational age, birth order, day care attendance before 1 yr of age, parental tobacco smoking, socioeconomic status, medications for asthma and other allergic diseases, and atopic status. These factors might affect the association between obesity and asthma in young children. An additional limitation of this study is that body weights and heights were parent-reported. A systematic review showed trends of under-reporting for weight and BMI and over-reporting for height in the adult population, reflecting body-image concerns (29). A cohort study showed that at 4 yr of age, parents of children with a low BMI tended to over-report body weight, whereas parents of children with a high BMI tended to under-report body weight, although the difference between measured and parent-reported weight and height was small (30). These tendencies might have affected the association between obesity and asthma.

In conclusion, together with our previous findings (5), there was a clear association between obesity and current

asthma in all age group from preschool childhood to adolescence in Japan, and there was no gender effect on this association. Further studies will be needed to understand the mechanisms underlying the association of obesity with asthma in children.

Acknowledgments

The authors thank the children and their parents who participated in this survey.

Conflict of interest

All authors declare that we have no conflict of interest.

Funding

This study was supported by a grant from the Japanese Ministry of Health, Labour and Welfare to the Japanese Asthma Survey Group.

References

- Nishima S, Chisaka H, Fujiwara T, et al. Surveys on the prevalence of pediatric bronchial asthma in Japan: a comparison between the 1982, 1992, and 2002 surveys conducted in the same region using the same methodology. *Allergol Int* 2009; **58**: 37–53.
- Matsushita Y, Yoshiike N, Kaneda F, Yoshita K, Takimoto H. Trends in childhood obesity in Japan over the last 25 years from the national nutrition survey. *Obes Res* 2004; **12**: 205–14.
- Inokuchi M, Matsuo N, Takayama JI, Hasegawa T. Official Japanese reports significantly underestimate prevalence of overweight in school children: inappropriate definition of standard weight and calculation of excess weight. *Ann Hum Biol* 2009; **36**: 139–45.
- Story RE. Asthma and obesity in children. *Curr Opin Pediatr* 2007; **19**: 680–4.
- Okabe Y, Itazawa T, Adachi Y, et al. Association of overweight with asthma symptoms in Japanese school children. *Pediatr Int* 2011; **53**: 192–8.
- Flaherman V, Rutherford GW. A meta-analysis of the effect of high weight on asthma. *Arch Dis Child* 2006; **91**: 334–9.
- Litonjua AA, Gold DR. Asthma and obesity: common early-life influences in the inception of disease. *J Allergy Clin Immunol* 2008; **121**: 1075–84.
- Serdula MK, Ivery D, Coates RJ, Freedman DS, Williamson DF, Byers T. Do obese children become obese adults? A review of the literature. *Prev Med* 1993; **22**: 167–77.
- Brand PL, Baraldi E, Bisgaard H, et al. Definition, assessment and treatment of wheezing disorders in preschool children: an evidence-based approach. *Eur Respir J* 2008; **32**: 1096–110.
- Cole TJ, Bellizzi MC, Flegal KM, Dietz WH. Establishing a standard definition for child overweight and obesity worldwide: international survey. *BMJ* 2000; **320**: 1240–3.
- Saldiva SR, Escuder MM, Venancio SI, et al. Is overweight a risk factor for wheezing in pre-school children? A study in 14 Brazilian communities. *Public Health Nutr* 2007; **10**: 878–82.
- Mehta S, Mahajan D, Steinbeck KS, Birmingham MA. Relationship between measures of fatness, lipids and ethnicity in a cohort of adolescent boys. *Ann Nutr Metab* 2002; **46**: 192–9.
- Sampei MA, Novo NF, Juliano Y, Sigulem DM. Anthropometry and body composition in ethnic Japanese and Caucasian adolescent boys. *Pediatr Int* 2008; **50**: 679–86.
- Kojima N, Ohya Y, Futamura M, et al. Exercise-induced asthma is associated with impaired quality of life among children with asthma in Japan. *Allergol Int* 2009; **58**: 187–92.
- Kondo N, Nishimuta T, Nishima S, et al. Japanese pediatric guidelines for the treatment and management of bronchial asthma 2008. *Pediatr Int* 2010; **52**: 319–26.
- Inokuchi M, Matsuo N, Anzo M, Hasegawa T. Body mass index reference values (mean and SD) for Japanese children. *Acta Paediatr* 2007; **96**: 1674–6.
- Tai A, Volkmer R, Burton A. Association between asthma symptoms and obesity in preschool (4–5 year old) children. *J Asthma* 2009; **46**: 362–5.
- von Kries R, Hermann M, Grunert VP, von Mutius E. Is obesity a risk factor for childhood asthma? *Allergy* 2001; **56**: 318–22.
- Hederes CA, Hasselgren M, Hedlin G, Bornehag CG. Comparison of clinically diagnosed asthma with parental assessment of children's asthma in a questionnaire. *Pediatr Allergy Immunol* 2007; **18**: 135–41.
- Chen Y, Dales R, Jiang Y. The association between obesity and asthma is stronger in nonallergic than allergic adults. *Chest* 2006; **130**: 890–5.
- Visness CM, London SJ, Daniels JL, et al. Association of obesity with IgE levels and allergy symptoms in children and adolescents: results from the National Health and Nutrition Examination Survey 2005–2006. *J Allergy Clin Immunol* 2009; **123**: 1163–9.
- Jacobson JS, Mellins RB, Garfinkel R, et al. Asthma, body mass, gender, and Hispanic national origin among 517 preschool children in New York City. *Allergy* 2008; **63**: 87–94.
- Schachter LM, Peat JK, Salome CM. Asthma and atopy in overweight children. *Thorax* 2003; **58**: 1031–5.
- Ho WC, Lin YS, Caffrey JL, et al. Higher body mass index may induce asthma among adolescents with pre-asthmatic symptoms: a prospective cohort study. *BMC Public Health* 2011; **11**: 542.
- Kwon HL, Ortiz B, Swaner R, et al. Childhood asthma and extreme values of body mass index: the Harlem Children's Zone Asthma Initiative. *J Urban Health* 2006; **83**: 421–33.
- Mannino DM, Mott J, Ferdinands JM, et al. Boys with high body masses have an increased risk of developing asthma: findings

- from the National Longitudinal Survey of Youth (NLSY). *Int J Obes (Lond)* 2006; **30**: 6–13.
27. Scholtens S, Wijga AH, Seidell JC, et al. Overweight and changes in weight status during childhood in relation to asthma symptoms at 8 years of age. *J Allergy Clin Immunol* 2009; **123**: 1312–8.
28. Zhang Z, Lai HJ, Roberg KA, et al. Early childhood weight status in relation to asthma development in high-risk children. *J Allergy Clin Immunol* 2010; **126**: 1157–62.
29. Gorber SC, Tremblay M, Moher D, Gorber B. A comparison of direct vs. self-report measures for assessing height, weight and body mass index: a systematic review. *Obes Rev* 2007; **8**: 307–26.
30. Scholtens S, Brunekreef B, Visscher TL, et al. Reported versus measured body weight and height of 4-year-old children and the prevalence of overweight. *Eur J Public Health* 2007; **17**: 369–74.

ORIGINAL ARTICLE

EPIDEMIOLOGY AND GENETICS

Cedar and cypress pollen counts are associated with the prevalence of allergic diseases in Japanese schoolchildren

K. Yoshida¹, Y. Adachi², M. Akashi³, T. Itazawa², Y. Murakami⁴, H. Odajima⁴, Y. Ohya⁵ & A. Akasawa¹

¹Division of Allergy, Tokyo Metropolitan Children's Medical Center, Tokyo; ²Department of Pediatrics, University of Toyama, Toyama; ³Department of Pediatrics, Saitama City Hospital, Saitama; ⁴Department of Pediatrics, Fukuoka National Hospital, Fukuoka; ⁵Division of Allergy, National Center for Child Health and Development, Tokyo, Japan

To cite this article: Yoshida K, Adachi Y, Akashi M, Itazawa T, Murakami Y, Odajima H, Ohya Y, Akasawa A. Cedar and cypress pollen counts are associated with the prevalence of allergic diseases in Japanese schoolchildren. *Allergy* 2013; **68**: 757–763.

Keywords

asthma; children; conjunctivitis; pollen; rhinitis.

Correspondence

Koichi Yoshida, Tokyo Metropolitan Children's Medical Center, 2-8-29 Musashidai, Fuchu, Tokyo, Japan.
Tel.: +81-42-300-5111
Fax: +81-42-312-8163
E-mail: kouichi_yoshida@tmhp.jp

Accepted for publication 2 March 2013

DOI:10.1111/all.12164

Edited by: Wytske Fokkens

Abstract

Background: Patients allergic to pollen have been known to become more symptomatic during pollen season compared with the nonpollen season. However, there are few studies regarding whether higher exposure to pollen might increase the prevalence of allergic diseases.

Methods: An ecological analysis was conducted to evaluate whether pollen exposure is associated with the prevalence of allergic diseases in schoolchildren. Pollen count data of Japanese cedar (*Cryptomeria japonica*) and Japanese cypress (*Chamaecyparis obtusa*), which are the major pollen allergens in Japan, were obtained from each prefecture. The prevalence of allergic diseases in schoolchildren in each prefecture was based on a nationwide cross-sectional survey using the International Study of Asthma and Allergies in Childhood questionnaire.

Results: After omitting three prefectures where pollen data were not available, data of 44 prefectures were analysed. The prevalence of allergic rhinoconjunctivitis in children aged 6–7 years was positively associated with both cedar and cypress pollen counts ($P = 0.01$, both), whereas the prevalence of allergic rhinoconjunctivitis in children aged 13–14 years was positively associated with only cypress pollen counts ($P = 0.003$). Furthermore, the prevalence of asthma was positively associated with cedar pollen counts in 6- to 7-year-old children ($P = 0.003$) but not cypress pollen counts in either age group.

Conclusions: There are ecological associations between pollen counts and the prevalence of allergic diseases in Japanese schoolchildren. Further studies are needed to determine whether the difference between the effects of cedar and cypress pollens is attributable to pollen counts or allergenicity.

Asthma and allergic rhinitis are the most common chronic diseases in childhood and impair the quality of life of the patients and their family (1, 2). The incidence of both disorders has increased dramatically worldwide in the last few decades (3). However, the prevalence of allergic diseases varies widely throughout the world. The International Study of Asthma and Allergies in Childhood (ISAAC) showed that the prevalence of asthma and allergic rhinoconjunctivitis varies 20- to 40-fold in the world (4, 5).

Pollens, along with climate and air pollutants, are among the environmental factors hypothesized to contribute to this variation (6). In patients with allergic rhinitis, symptoms become more frequent and more severe when pollen counts

increase (7, 8). Furthermore, patients with asthma require attendance at emergency departments and hospital admissions more frequently when the airborne pollen concentration is higher (9–12).

However, there are only a few studies evaluating the ecological associations between pollen counts and the prevalence of allergic diseases, and the results were inconsistent. Studies comparing the prevalence of allergic diseases between an area with higher pollen count and another with low pollen count showed that higher exposure to pollen was associated with a higher sensitization rate in children (13) and prevalence of allergic rhinitis in adults (14, 15). By contrast, a large study performed in 28 centres within 11 countries showed that

there was little relationship between pollen exposure and the prevalence of allergic symptoms in children (16). This inconsistency may be attributable to geographical differences in the major pollen species and lifestyles of the study subjects. Ecological studies to evaluate this association for specific pollen exposure in a large homogeneous population are warranted.

Therefore, we performed an ecological analysis to evaluate whether there were associations between specific pollen counts (Japanese cedar and Japanese cypress) and the prevalence of allergic diseases in Japanese schoolchildren, using data on pollen counts and the prevalence of allergic diseases in each prefecture throughout Japan.

Methods

Study participants

The prevalence of allergic diseases in children aged 6–7 and 13–14 years in each prefecture was based on the data of a nationwide survey that was conducted throughout Japan in 2008; details of the methods and response rates have already been published (17). In this survey, samples were randomly selected from all prefectures ($n = 47$) in Japan using public schools as the sampling units because more than 95% of schoolchildren attend public schools in Japan.

Questionnaire

The survey used the Japanese version of the written questionnaire of ISAAC, which was distributed by teachers at the participating schools (17). The responses to the questions were reported by parents for children aged 6–7 years and were self-reported for children aged 13–14 years.

Allergic rhinoconjunctivitis was defined as positive answers to both of these questions: 'In the past 12 months, have you (has your child) had a problem with sneezing, or a runny, or blocked nose when you (he/she) did not have a cold or the flu?' and 'In the past 12 months, has this nose problem been accompanied by itchy-watery eyes?' Asthma was defined as a positive answer to the question: 'Have you (has your child) had wheezing or whistling in the chest in the past 12 months?'

Pollen and meteorological data

Japanese cedar (*Cryptomeria japonica*, family Taxodiaceae) and Japanese cypress (*Chamaecyparis obtusa*, family Cupressaceae) are the major causes of pollinosis in Japan. We used pollen data from the Association of Pollen Information in Japan. The cedar and cypress pollen counts were measured at observation facilities located in all prefectures except for Okinawa. Because a Durham's sampler has been the most popular apparatus for measuring pollen counts in Japan, we omitted data from two prefectures in which the pollen counts were measured by different methods. The data from these three prefectures were excluded, and the data from the 44 remaining prefectures included in the final analysis. The average values

of the pollen counts per year over the past 4 years were used in this study because it may take time for children to become sensitized and develop allergic symptoms (8, 18). Meteorological data were obtained from the Japan Meteorological Agency (<http://www.jma.go.jp/jma/indexe.html>). The mean annual temperature and relative humidity measured at each prefectural capital in 2008 were used in this analysis.

Statistical analyses

Chi-square tests were used to assess whether the prevalence of allergic diseases differed between children included in this study and those who were excluded. The data for the two types of tree pollen and the two age groups were analysed separately. Associations between pollen counts and the prevalence of allergic rhinoconjunctivitis were determined using Pearson's product-moment correlation coefficient. Multivariable regression analyses of the associations between pollen counts and the prevalence of allergic symptoms were adjusted for the gender ratio (17), mean annual temperature (19) and mean annual relative humidity (19). The associations were analysed after adjustment for the pollen counts of other species as potential confounders, as cross-reactivity exists between cedar and cypress pollens (20). The prevalence of allergic rhinoconjunctivitis was included as a confounder in the analyses of the associations between pollen counts and the prevalence of asthma because allergic rhinitis may affect asthma patients (21, 22). P values <0.05 were considered to indicate statistical significance. All analyses were performed using the statistical package 'SPSS for Windows version 19' (SPSS Inc., Chicago, IL, USA).

Ethics

The study protocol was approved by the independent review board of the National Center for Child Health and Development.

Results

Data were analysed in 44 prefectures, in which cedar and cypress pollen counts were measured separately, including 40 975 children aged 6–7 years and 45 787 children aged 13–14 years. The average values of cedar and cypress pollen counts in the 44 prefectures analysed were 2967 counts/cm² (range, 34–7912 counts/cm²) and 1245 counts/cm² (range, 1–6048 counts/cm²), respectively. Cedar pollen counts were higher in prefectures in eastern Japan (Fig. 1A), and cypress pollen counts were higher in prefectures on the Pacific side than along the Sea of Japan (Fig. 1B).

There was a wide range of the prevalence of allergic rhinoconjunctivitis (range, 8.1–29.2%) and asthma (range, 9.4–17.3%) between prefectures in the 6- to 7-year-old children. Similar to the 6- to 7-year-old children, the prevalence of allergic rhinoconjunctivitis ranged from 10.8% to 30.9% and that of asthma ranged from 6.1% to 13.2% in the 13- to 14-year-old children. The prevalence of allergic rhinoconjunctivitis in 6- to 7-year-old children was higher in prefectures in

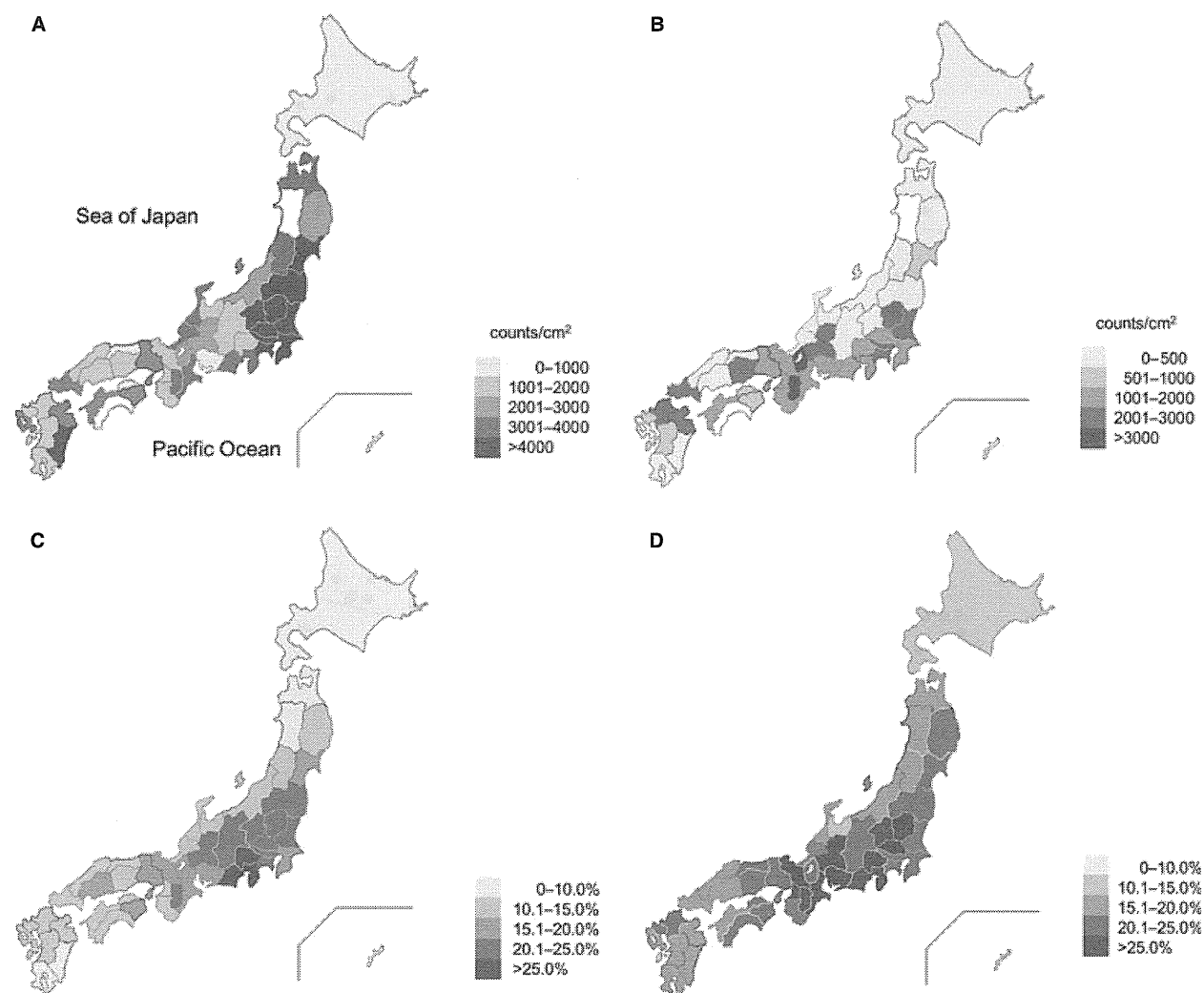


Figure 1 Maps of pollen counts and the prevalence of allergic rhinoconjunctivitis in Japan. (A) Japanese cedar pollen counts. (B) Japanese cypress pollen counts. (C) The prevalence of allergic

rhinoconjunctivitis in 6- to 7-year-old children. (D) The prevalence of allergic rhinoconjunctivitis in 13- to 14-year-old children.

eastern Japan (Fig. 1C), whereas the prevalence of allergic rhinoconjunctivitis in 13- to 14-year-old children was higher in prefectures on the Pacific side of eastern and central Japan (Fig. 1D). Cedar pollen counts were positively associated with the prevalence of allergic rhinoconjunctivitis in 6- to 7-year-old children ($R = 0.48$, $P = 0.001$) (Fig. 2A) but not in 13- to 14-year-old children ($R = 0.18$, $P = 0.24$) (Fig. 2B). Cypress pollen counts were positively associated with the prevalence of allergic rhinoconjunctivitis in 6- to 7-year-old children ($R = 0.43$, $P = 0.004$) and 13- to 14-year-old children ($R = 0.47$, $P = 0.001$) (Fig. 2C,D). Even after adjustment for confounders, the prevalence of allergic rhinoconjunctivitis remained positively associated with cedar pollen counts for the 6- to 7-year-old children ($P = 0.01$) and cypress pollen counts for both the 6- to 7-year-old children and 13- to 14-year-old children ($P = 0.01$ and $P = 0.003$, respectively) (Table 1). Cedar pollen counts were not

associated with the prevalence of allergic rhinoconjunctivitis in 13- to 14-year-old children after adjustment for confounders ($P = 0.29$).

In general, the prevalence of allergic rhinoconjunctivitis was higher in 13- to 14-year-old children than in 6- to 7-year-old children. However, the difference between the two age groups was inversely associated with the prevalence of allergic rhinoconjunctivitis in the younger children ($R = -0.52$, $P < 0.001$) (Fig. 3A). Therefore, we analysed the association between the pollen counts and the differences in the prevalence of allergic rhinoconjunctivitis between the two age groups. Differences in the prevalence of allergic rhinoconjunctivitis were inversely associated with cedar pollen counts ($R = -0.50$, $P = 0.001$) (Fig. 3B) but not with cypress pollen counts ($R = -0.28$, $P = 0.86$) (Fig. 3C).

We next analysed the associations between pollen counts and the prevalence of asthma (Table 1). After adjustment for

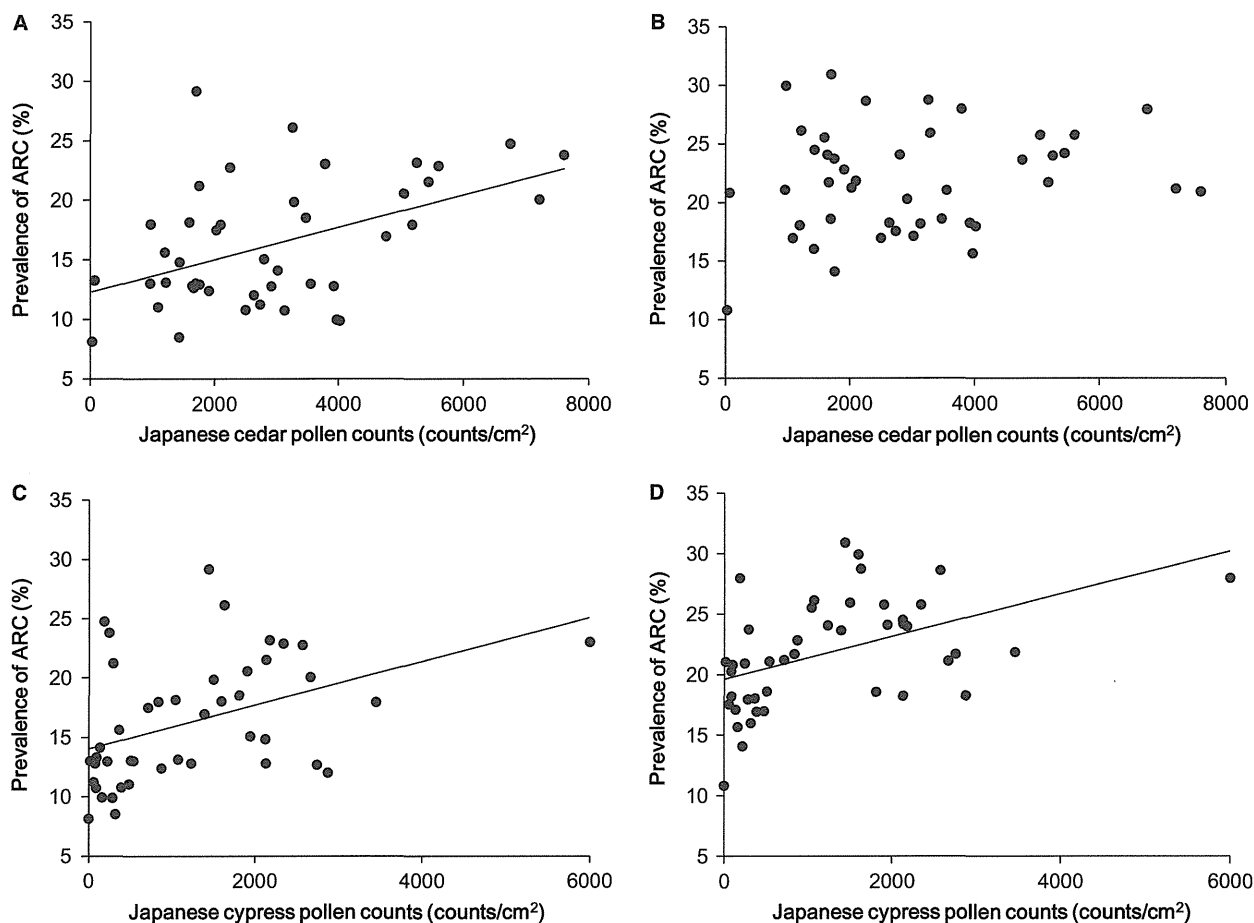


Figure 2 Pollen counts and the prevalence of allergic rhinoconjunctivitis (ARC). (A) Positive association between cedar pollen counts and the prevalence of ARC in 6- to 7-year-old children ($R = 0.48$, $P = 0.001$). (B) No association between cedar pollen counts and the prevalence of ARC in 13- to 14-year-old children ($R = 0.18$,

$P = 0.24$). (C) Positive association between cypress pollen counts and the prevalence of ARC in 6- to 7-year-old children ($R = 0.43$, $P = 0.004$). (D) Positive association between cypress pollen counts and the prevalence of ARC in 13- to 14-year-old children ($R = 0.47$, $P = 0.001$).

confounders, cedar pollen counts were positively associated with the prevalence of asthma in 6- to 7-year-old children ($P = 0.003$) but not in 13- to 14-year-old children ($P = 0.46$). Cypress pollen counts were not associated with the prevalence of asthma in either age group ($P = 0.07$ for the 6- to 7-year-old children and $P = 0.89$ for the 13- to 14-year-old children).

Discussion

In this ecological study, we found a positive association between cedar and cypress pollen counts and the prevalence of allergic rhinoconjunctivitis and asthma in Japanese schoolchildren. Consistent with our finding, a study performed in Italian children aged 11–14 years revealed that children living in a high-pollen-count area showed a significantly higher percentage of sensitization to pollens than those in another area with low pollen counts (13). Similar results were shown in French adults (15) and the genetically homogeneous Inuit population (14), although their sample sizes were small. By

contrast, an ecological study performed in 11 countries (9 European countries, Australia and Kuwait) revealed that there was little relationship between pollen exposure and the prevalence of allergic symptoms in children aged 13–14 years (16). Inconsistency with our results might be explained by the geographical heterogeneity in the lifestyle of the study subjects (23, 24) and the prevalence of plant species and their related allergens (25).

Cedar pollen counts were positively associated with the prevalence of allergic rhinoconjunctivitis in 6- to 7-year-old children but not in 13- to 14-year-old children. Although the prevalence of allergic rhinoconjunctivitis is generally higher in 13- to 14-year-old children than in 6- to 7-year-old children (5), the differences in the prevalence of allergic rhinoconjunctivitis between the two age groups were inversely associated with the cedar pollen counts. A retrospective analysis performed in the United States revealed that over 50% of children with allergic rhinitis were sensitized to at least one pollen by the age of 3 years and that the sensitization

rate increased with age and plateaued by the age of 8 years (18). Together with our results, it is suggested that children in areas heavily exposed to cedar pollen might be sensitized to cedar pollen in early childhood, and the prevalence of allergic rhinoconjunctivitis might therefore plateau by the age of 6–7 years. By contrast, the prevalence of allergic rhinoconjunctivitis in less-exposed areas might not yet have plateaued

by the age of 6–7 years and might thus continue to increase thereafter. Consequently, cedar pollen counts were not associated with the prevalence of allergic rhinoconjunctivitis in 13- to 14-year-old children.

Unlike cedar pollen counts, cypress pollen counts were positively associated with the prevalence of allergic rhinoconjunctivitis in 6- to 7-year-old children, and this positive association persisted in 13- to 14-year-old children. In Japan, cedar pollen counts are usually more than twice those of cypress. Therefore, the prevalence of allergic rhinoconjunctivitis due to cypress pollen might require additional time to reach a plateau than that caused by cedar pollen. The discrepancy between the results for cedar and cypress pollens may be attributable not only to differences in pollen counts but also to differences in antigenicity. T-cell reactivity differs between cedar and cypress pollens (26, 27), although there is some cross-reactivity (20).

Cedar pollen counts were positively associated with the prevalence of asthma in 6- to 7-year-old children even after adjustment for confounders, including the prevalence of allergic rhinoconjunctivitis. Pollens may induce asthma symptoms independently of allergic rhinitis by two mechanisms. The first is inhalation of pollen allergens. Pollen grains are generally too large to penetrate the lower airway and thus do not provoke asthma symptoms. However, small particles of cedar pollen contain a major pollen allergen (Cry j 1) (28) and are likely to induce an asthma attack (29). The second is that pollens may act as adjuvants to exacerbate asthmatic symptoms. Intranasal administration of ovalbumin with cedar pollen induced ovalbumin-specific IgE responses, although the administration of ovalbumin alone did not induce the production of ovalbumin-specific IgE (30). Cedar pollen may thus enhance sensitization to other allergens as well as pollen itself and thereby influence asthma in young children. The prevalence of asthma was not associated with cypress pollen counts. The reason for this discrepancy between cedar and cypress pollens remains unclear and warrants further investigation.

Table 1 Associations between pollen counts and the prevalence of allergic diseases

	Japanese cedar		Japanese cypress	
	Coefficient (SE)	<i>P</i> -value	Coefficient (SE)	<i>P</i> -value
Allergic rhinoconjunctivitis				
6- to 7-year-old children	1.07 (0.39)*	0.01	1.49 (0.57)†	0.01
13- to 14-year-old children	0.34 (0.32)*	0.29	1.52 (0.49)†	0.003
Asthma				
6- to 7-year-old children	0.49 (0.16)‡	0.003	-0.43 (0.23)§	0.07
13- to 14-year-old children	0.11 (0.15)‡	0.46	0.04 (0.30)§	0.89

SE, standard error.

Coefficient is for each pollen count increment of 1000 counts/cm².

*Adjusted for the gender ratio, mean annual temperature, mean annual relative humidity, and cypress pollen counts.

†Adjusted for the gender ratio, mean annual temperature, mean annual relative humidity, and cedar pollen counts.

‡Adjusted for the gender ratio, mean annual temperature, mean annual relative humidity, cypress pollen counts, and prevalence of allergic rhinoconjunctivitis.

§Adjusted for the gender ratio, mean annual temperature, mean annual relative humidity, cedar pollen counts, and prevalence of allergic rhinoconjunctivitis.

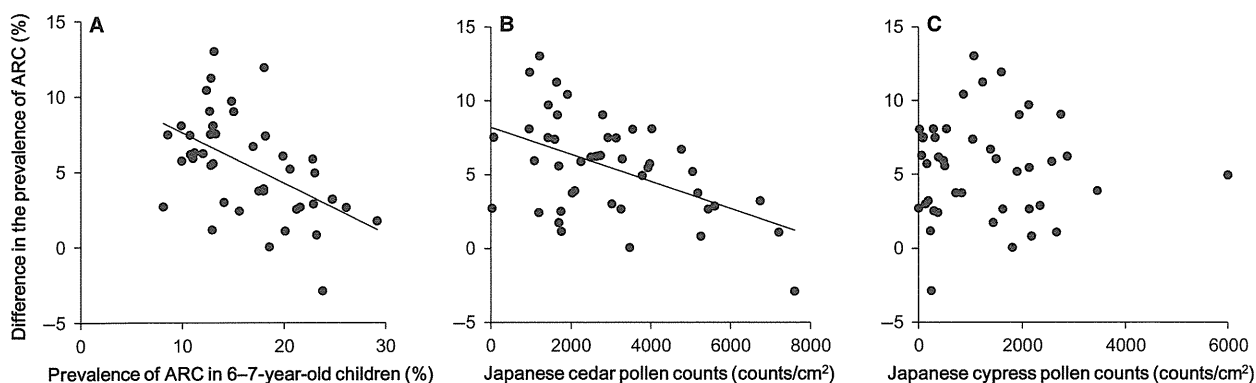


Figure 3 Differences in the prevalence of allergic rhinoconjunctivitis (ARC) between 6- to 7-year-old children and 13- to 14-year-old children. (A) Inverse association between the prevalence of ARC in 6- to 7-year-old children and the difference in the prevalence of ARC between the two age groups ($R = -0.52$, $P < 0.001$). (B)

Inverse association between cedar pollen counts and the difference in the prevalence of ARC between the two age groups ($R = -0.50$, $P = 0.001$). (C) No association between cypress pollen counts and the difference in the prevalence of ARC between the two age groups ($R = -0.03$, $P = 0.86$).

The strength of our study is that it addresses the associations between two types of tree pollen and the prevalence of allergic diseases in children in two different age groups. One limitation is that our study was a questionnaire-based survey without testing for sensitization. Estimation of the prevalence of allergic rhinoconjunctivitis by a questionnaire only may be not very sensitive in young children (31). However, sensitization to any allergen is strongly associated with allergic rhinoconjunctivitis as assessed by the ISAAC questionnaire (32), and this questionnaire has previously been used for ecological analyses (6, 16). Another limitation is that we did not adjust our analysis for the levels of air pollutants, such as SPM, SO₂ and NO_x. Air pollutants can affect both allergic subjects (33) and the allergenicity of pollens (34). The levels of these pollutants have been reported to be affected by the distance from major roads and the traffic count (35) and vary widely even within the same prefecture. Therefore, we did not include air pollutants as confounders in this analysis.

In conclusion, pollen counts of cedar and cypress are positively associated with the prevalence of allergic rhinoconjunctivitis and asthma in Japanese schoolchildren. Although both cedar and cypress pollens are tree pollens, they show different effects regarding the prevalence of allergic diseases. Further studies are required to elucidate the reason for this discrepancy.

References

- Maspero J, Lee BW, Katelaris CH, Potter PC, Cingi C, Lopatin A et al. Quality of life and control of allergic rhinitis in patients from regions beyond western Europe and the United States. *Clin Exp Allergy* 2012;**42**:1684–1696.
- Chen H, Gould MK, Blanc PD, Miller DP, Kamath TV, Lee JH et al. Asthma control, severity, and quality of life: quantifying the effect of uncontrolled disease. *J Allergy Clin Immunol* 2007;**120**:396–402.
- Asher MI, Montefort S, Bjorksten B, Lai CK, Strachan DP, Weiland SK et al. Worldwide time trends in the prevalence of symptoms of asthma, allergic rhinoconjunctivitis, and eczema in childhood: ISAAC Phases One and Three repeat multicountry cross-sectional surveys. *Lancet* 2006;**368**:733–743.
- Lai CK, Beasley R, Crane J, Foliaki S, Shah J, Weiland S. Global variation in the prevalence and severity of asthma symptoms: phase three of the International Study of Asthma and Allergies in Childhood (ISAAC). *Thorax* 2009;**64**:476–483.
- Ait-Khaled N, Pearce N, Anderson HR, Ellwood P, Montefort S, Shah J. Global map of the prevalence of symptoms of rhinoconjunctivitis in children: The International Study of Asthma and Allergies in Childhood (ISAAC) Phase Three. *Allergy* 2009;**64**:123–148.
- Asher MI, Stewart AW, Mallol J, Montefort S, Lai CK, Ait-Khaled N et al. Which population level environmental factors are associated with asthma, rhinoconjunctivitis and eczema? Review of the ecological analyses of ISAAC Phase One. *Respir Res* 2010;**11**:8.
- Ridolo E, Albertini R, Giordano D, Soliani L, Usberti I, Dall'Aglio PP. Airborne pollen concentrations and the incidence of allergic asthma and rhinoconjunctivitis in northern Italy from 1992 to 2003. *Int Arch Allergy Immunol* 2007;**142**:151–157.
- Ozasa K, Hama T, Dejima K, Watanabe Y, Hyo S, Terada T et al. A 13-year study of Japanese cedar pollinosis in Japanese schoolchildren. *Allergol Int* 2008;**57**:175–180.
- DellaValle CT, Triche EW, Leaderer BP, Bell ML. Effects of ambient pollen concentrations on frequency and severity of asthma symptoms among asthmatic children. *Epidemiology* 2012;**23**:55–63.
- Darrow LA, Hess J, Rogers CA, Tolbert PE, Klein M, Sarnat SE. Ambient pollen concentrations and emergency department visits for asthma and wheeze. *J Allergy Clin Immunol* 2012;**130**:630–638.
- Dales RE, Cakmak S, Judek S, Coates F. Tree pollen and hospitalization for asthma in urban Canada. *Int Arch Allergy Immunol* 2008;**146**:241–247.
- Erbas B, Akram M, Dharmage SC, Tham R, Dennekamp M, Newbigin E et al. The role of seasonal grass pollen on childhood asthma emergency department presentations. *Clin Exp Allergy* 2012;**42**:799–805.
- Crimi P, Boidi M, Minale P, Tazzer C, Zanrdi S, Ciprandi G. Differences in prevalence of allergic sensitization in urban and rural school children. *Ann Allergy Asthma Immunol* 1999;**83**:252–256.
- Porsbjerg C, Linstow ML, Nepper-christensen SC, Rasmussen A, Korsgaard J, Nolte H et al. Allergen sensitization and allergen exposure in Greenlandic Inuit residing in Denmark and Greenland. *Respir Med* 2002;**96**:736–744.
- Charpin D, Hughes B, Mallea M, Sutra JP, Balansard G, Vervloet D. Seasonal allergic symptoms and their relation to pollen exposure in south-east France. *Clin Exp Allergy* 1993;**23**:435–439.
- Burr ML, Emberlin JC, Treu R, Cheng S, Pearce NE. Pollen counts in relation to the prevalence of allergic rhinoconjunctivitis, asthma and atopic eczema in the International Study of Asthma and Allergies in Childhood (ISAAC). *Clin Exp Allergy* 2003;**33**:1675–1680.
- Okabe Y, Itazawa T, Adachi Y, Yoshida K, Ohya Y, Odajima H et al. Association of overweight with asthma symptoms in Japanese school children. *Pediatr Int* 2011;**53**:192–198.
- Wong V, Wilson NW, Peele K, Hogan MB. Early pollen sensitization in children is dependent upon regional aeroallergen exposure. *J Allergy (Cairo)* 2012;**2012**:583765.
- Weiland SK, Husing A, Strachan DP, Rzehak P, Pearce N. Climate and the prevalence

Acknowledgments

We would like to thank all of the students and parents who participated in this survey. We are indebted to Mari Sasaki for critical reading of the manuscript.

Funding

This study was supported by a Health and Labour Sciences Research Grant for Research on Allergic Disease and Immunology from the Ministry of Health, Labour, and Welfare, Japan.

Author contributions

Koichi Yoshida analysed the data and wrote the article. Yui-chi Adachi and Akira Akasawa designed the study protocol and cowrote the article. Masayuki Akashi, Yukihiko Ohya and Hiroshi Odajima designed the study protocol. Toshiko Itazawa and Yoko Murakami analysed the data and discussed the results.

Conflict of interest

All authors declare that there are no conflicts of interest.

- of symptoms of asthma, allergic rhinitis, and atopic eczema in children. *Occup Environ Med* 2004;**61**:609–615.
20. Charpin D, Calleja M, Lahoz C, Pichot C, Waisel Y. Allergy to cypress pollen. *Allergy* 2005;**60**:293–301.
 21. Brozek JL, Bousquet J, Baena-Cagnani CE, Bonini S, Canonica GW, Casale TB et al. Allergic Rhinitis and its Impact on Asthma (ARIA) guidelines: 2010 revision. *J Allergy Clin Immunol* 2010;**126**:466–476.
 22. Ohta K, Bousquet PJ, Aizawa H, Akiyama K, Adachi M, Ichinose M et al. Prevalence and impact of rhinitis in asthma. SACRA, a cross-sectional nation-wide study in Japan. *Allergy* 2011;**66**:1287–1295.
 23. Von Ehrenstein OS, Von Mutius E, Illi S, Baumann L, Bohm O, von Kries R. Reduced risk of hay fever and asthma among children of farmers. *Clin Exp Allergy* 2000;**30**:187–193.
 24. Alfvén T, Braun-Fahrlander C, Brunekreef B, von Mutius E, Riedler J, Scheynius A et al. Allergic diseases and atopic sensitization in children related to farming and anthroposophic lifestyle—the PARSIFAL study. *Allergy* 2006;**61**:414–421.
 25. Bousquet PJ, Chinn S, Janson C, Kogevinas M, Burney P, Jarvis D. Geographical variation in the prevalence of positive skin tests to environmental aeroallergens in the European Community Respiratory Health Survey I. *Allergy* 2007;**62**:301–309.
 26. Sone T, Dairiki K, Morikubo K, Shimizu K, Tsunoo H, Mori T et al. Identification of human T cell epitopes in Japanese cypress pollen allergen, Cha o 1, elucidates the intrinsic mechanism of cross-allergenicity between Cha o 1 and Cry j 1, the major allergen of Japanese cedar pollen, at the T cell level. *Clin Exp Allergy* 2005;**35**:664–671.
 27. Sone T, Dairiki K, Morikubo K, Shimizu K, Tsunoo H, Mori T et al. Recognition of T cell epitopes unique to Cha o 2, the major allergen in Japanese cypress pollen, in allergic patients cross-reactive to Japanese cedar and Japanese cypress pollen. *Allergol Int* 2009;**58**:237–245.
 28. Takahashi Y, Sakaguchi M, Inouye S, Miyazawa H, Imaoka K, Katagiri S. Existence of exine-free airborne allergen particles of Japanese cedar (*Cryptomeria japonica*) pollen. *Allergy* 1991;**46**:588–593.
 29. Maeda Y, Akiyama K, Shida T. A clinical study of Japanese cedar (*Cryptomeria japonica*) pollen-induced asthma. *Allergol Int* 2008;**57**:413–417.
 30. Kamijo S, Takai T, Kuhara T, Tokura T, Ushio H, Ota M et al. Cupressaceae pollen grains modulate dendritic cell response and exhibit IgE-inducing adjuvant activity in vivo. *J Immunol* 2009;**183**:6087–6094.
 31. Marinho S, Simpson A, Lowe L, Kissen P, Murray C, Custovic A. Rhinoconjunctivitis in 5-year-old children: a population-based birth cohort study. *Allergy* 2007;**62**:385–393.
 32. Braun-Fahrlander C, Wuthrich B, Gassner M, Grize L, Sennhauser FH, Varonier HS et al. Validation of a rhinitis symptom questionnaire (ISAAC core questions) in a population of Swiss school children visiting the school health services. *Pediatr Allergy Immunol* 1997;**8**:75–82.
 33. Strickland MJ, Darrow LA, Klein M, Flanders WD, Sarnat JA, Waller LA et al. Short-term associations between ambient air pollutants and pediatric asthma emergency department visits. *Am J Respir Crit Care Med* 2010;**182**:307–316.
 34. Ghiani A, Aina R, Asero R, Bellotto E, Citterio S. Ragweed pollen collected along high-traffic roads shows a higher allergenicity than pollen sampled in vegetated areas. *Allergy* 2012;**67**:887–894.
 35. Gilbert NL, Goldberg MS, Beckerman B, Brook JR, Jerrett M. Assessing spatial variability of ambient nitrogen dioxide in Montreal, Canada, with a land-use regression model. *J Air Waste Manag Assoc* 2005;**55**:1059–1063.

Association between Body Mass Index and Asthma among Japanese Adults: Risk within the Normal Weight Range

Yuma Fukutomi^{a, b} Masami Taniguchi^a Hiroyuki Nakamura^b Satoshi Konno^c
Masaharu Nishimura^c Yukio Kawagishi^d Chiharu Okada^{e, g} Yasushi Tanimoto^f
Kiyoshi Takahashi^e Akira Akasawa^h Kazuo Akiyama^a

^aClinical Research Center for Allergy and Rheumatology, Sagamihara National Hospital, Sagamihara, ^bDepartment of Environmental and Preventive Medicine, Graduate School of Medical Science, Kanazawa University, Kanazawa, ^cFirst Department of Medicine, Hokkaido University School of Medicine, Sapporo, ^dDepartment of Internal Medicine, Kurobe City Hospital, Kurobe, ^eNational Hospital Organization, Minami-Okayama Medical Center and ^fDepartment of Hematology, Oncology, Allergy and Respiratory Medicine, Okayama University Graduate School of Medicine, Dentistry and Pharmaceutical Sciences, Okayama, and ^gNational Hospital Organization, Tokyo Medical Center and ^hDepartment of Allergy, Tokyo Metropolitan Children's Medical Center, Tokyo, Japan

Key Words

Asthma · Obesity · Body mass index · Japan · Prevalence

Abstract

Background: Increasing amounts of data have shown that some Asian populations are more susceptible to increased weight and development of noncommunicable disease than Western populations. However, little is known about the association between increased weight, particularly within the normal range, and the development of asthma among Asian populations. **Methods:** To examine the association between increased body mass index (BMI) and asthma among Japanese adults, data from a nationwide population-based cross-sectional survey of asthma prevalence in Japan were analyzed (n = 22,962; age range 20–79 years). BMIs were classified into 7 categories considering WHO recommendations (cutoff points: 17.00, 18.50, 23.00, 25.00, 27.50 and 30.00), and the association between BMI and the prevalences of asthma as well as asthma symptoms were assessed by multivariate logistic regression. **Results:** The prevalences of obesity (BMI \geq 30.00) in this population were relatively low (males 3.0%,

females 2.3%). BMI categories of 25.00 or higher in both genders were significantly associated with an increased risk of asthma compared with the reference category (BMI 18.50–22.99). Even in females with a BMI of 23.00–24.99, the prevalence of asthma significantly increased (adjusted odds ratio 1.49, 95% confidence interval 1.16–1.92) compared with that in the reference category. **Conclusions:** An increase in the prevalence of asthma among Japanese females starts at a BMI of 23.00, which was relatively lower than those reported from Western countries. This finding suggests that the Japanese population is likely to have asthma with a lesser degree of obesity than Western populations.

Copyright © 2011 S. Karger AG, Basel

Introduction

Obesity and asthma are prevalent disorders worldwide and the prevalences of both diseases have increased in the last few decades. Recently, increasing amounts of data have suggested an association between obesity and asthma [1]. Many cross-sectional or prospective studies have

KARGER

Fax +41 61 306 12 34
E-Mail karger@karger.ch
www.karger.com

© 2011 S. Karger AG, Basel
1018–2438/12/1573–0281\$38.00/0

Accessible online at:
www.karger.com/iaa

Correspondence to: Dr. Yuma Fukutomi
Clinical Research Center for Allergy and Rheumatology
Sagamihara National Hospital
18-1 Sakuradai, Minamiku, Sagamihara, Kanagawa 252-0392 (Japan)
Tel. +81 42 742 8311, E-Mail y-fukutomi@sagamihara-hosp.gr.jp

shown an increased prevalence of asthma among subjects with a body mass index (BMI) higher than 25.00 or 30.00 compared with normal-weight subjects [1–7].

Obesity is also a key risk factor for other noncommunicable diseases such as type 2 diabetes and cardiovascular diseases. On the basis of the association between BMI and mortality revealed by studies conducted mainly on Western populations, the World Health Organization (WHO) has classified a BMI of 25.00 or higher as being overweight and a BMI of 30.00 or higher as being obese [8–10]. However, there is increasing evidence that there is a difference in susceptibility to obesity among ethnic groups. Some Asian populations are known to develop type 2 diabetes and cardiovascular diseases even in the upper level of the normal BMI range, and are more likely to develop these diseases than Western populations with an identical BMI [11, 12]. Therefore, WHO consultation has added further potential action points (23.0, 27.5, 32.5, 37.5) to the principal cutoff points after considering the observed lower BMI cutoff points for overweight or obesity among Asian populations [11, 13].

Indeed, previous studies have shown that the Japanese population is susceptible to obesity and is likely to develop noncommunicable diseases. The DECODE-DECODA study shows that the increase in the prevalence of type 2 diabetes starts at a BMI between 23.00 and 24.00 in the Japanese population, but in European populations it starts at 25.00 [12]. Follow-up studies in Japanese adults aged 30–59 years have also shown that an increased BMI, even within the nonobese level, is a risk factor for diabetes mellitus [14].

However, the association between obesity and asthma among Asian populations has not been well established. Most studies that have revealed the association between obesity and asthma have been performed in Western countries. Considering the association of BMI with type 2 diabetes and cardiovascular diseases, the BMI threshold for an increased prevalence of asthma may be lower in Asian populations. The Japanese population is suitable for research on ethnic characteristics among Asian populations, because the ethnic background in Japan is relatively homogeneous. To examine the association between obesity and asthma among Japanese adults, we performed a nationwide cross-sectional, population-based study on 22,962 Japanese adults aged 20–79 years. On the basis of the WHO additional BMI cutoff points [13], we further divided the normal range of BMIs (18.50–24.99) into two narrower categories (18.50–22.99 and 23.00–24.99), and investigated the association between asthma and increased BMI even within the normal range.

Methods

Study Design

We analyzed data obtained in a nationwide population-based cross-sectional study conducted on residents aged 20–79 years, living in 10 different areas of Japan in 2006. The methods of this study have been described elsewhere [15]. In brief, subjects were asked to complete the Japanese version of the ECRHS one-page questionnaire [16], which is a highly validated questionnaire for asthma symptoms and asthma diagnosis [17]. The questionnaire also included possible risk factors for asthma, that is height and weight, smoking status, living environment, current pet ownership as well as allergic rhinitis. In this study, after excluding subjects who did not complete questions on height and weight, data from 22,962 subjects (11,237 males and 11,725 females) were analyzed. This study was approved by the Ethics Committee of Sagami National Hospital.

Body Mass Index

BMI was used as a measure of relative weight. BMI was calculated as self-reported weight in kilograms divided by the square of self-reported height in meters. BMIs were classified into 7 categories considering WHO classifications with additional cutoff points [13]: underweight ≤ 16.99 and 17.00–18.49; normal range 18.50–22.99 and 23.00–24.99; overweight 25.00–27.49 and 27.50–29.99; obese ≥ 30.00 kg/m².

Outcome Variables

Current asthma and respiratory symptoms indicative of asthma were used as outcome variables. Current asthma was defined as meeting the following two criteria: (1) an affirmative response to the question ‘Have you ever had asthma?’ followed by ‘Was this confirmed by a doctor?’ and (2) having at least 1 asthma-related symptom in the last 12 months [18]. A subject who was considered to have asthma-related symptoms was one who answered in the affirmative to at least 1 of the following 4 questions: (1) ‘Have you had wheezing or whistling in your chest at any time in the last 12 months?’; (2) ‘Have you woken up with a feeling of tightness in your chest at any time in the last 12 months?’; (3) ‘Have you been woken up by an attack of shortness of breath at any time in the last 12 months?’; (4) ‘Have you been woken up by an attack of coughing at any time in the last 12 months?’

Statistical Analysis

The collected data were analyzed using SPSS 11.0 for Windows (SPSS Japan Inc.). In this study, we considered the BMI category of 18.50–22.99 as the reference BMI, and the prevalences of asthma and respiratory symptoms of subjects classified into the other BMI categories were compared with those of subjects classified into the reference category. Multivariate logistic regression models were separately developed by gender to adjust the risks of current asthma and respiratory symptoms associated with BMI for age groups (20–29, 30–39, 40–49, 50–59, 60–69, 70–79 years), smoking status, allergic rhinitis and pet ownership. Because the ECRHS questionnaire is originally designed for subjects aged 20–44 years and is highly validated in this population, a similar analysis was repeated after separating subjects by age group (20–44 and 45–79 years).

Results

The prevalences of wheeze in the last 12 months and current asthma in this study population were 10.2 and 4.2%, respectively. The proportions of subjects in all BMI categories are shown in table 1. The prevalences of obesity (BMI ≥ 30.00) among both genders were low, that is, 3.0% among males and 2.3% among females. Although more than 70% of the subjects were classified into the BMI category of normal range (18.50–24.99), the majority of them were included in the lower normal BMI category of 18.50–22.99.

Table 2 shows the gender-specific association of BMI categories with current asthma and respiratory symptoms. Generally, the associations of BMI with current asthma and respiratory symptoms in both genders were J-shaped, with the prevalence of the reference category (BMI 18.50–22.99) observed at the bottom of the J-shaped curve. After adjustment for age group, smoking status, allergic rhinitis, and pet ownership, BMI categories greater than 25.00 (25.00–27.49, 27.50–29.99 or ≥ 30.00) were associated with significantly increased risks of current asthma and respiratory symptoms in both genders when compared with the reference category, except for the association between current asthma and a BMI of 25.00–27.49 in males. Among females, the BMI category of 23.00–24.99 was also associated with increased risks of current asthma and respiratory symptoms compared with the reference category (current asthma: odds ratio, OR, 1.49, 95% confidence interval, CI, 1.16–1.92; wheeze: OR 1.34, 95% CI 1.11–1.61; wheeze with breathlessness: OR 1.29, 95% CI 1.02–1.63; wheeze without a cold: OR 1.46, 95% CI 1.17–1.84).

We repeated the same multivariate analysis after stratification by age group (table 3). The association between increased weight and current asthma and asthma symptoms was not significantly different between the two age groups in both genders. The BMI category of 23.00–24.99 in females aged 45–79 years was also significantly associated with increased risks of current asthma and respiratory symptoms with ORs of about 1.5. That in females aged 20–44 years was also associated with increased risks of current asthma and respiratory symptoms with ORs of about 1.4, whereas this association did not reach statistical significance, probably because of the limited sample size. However, two age groups showed a significant difference in the association of BMI categories lower than 18.50 with current asthma and asthma symptoms in both genders. A significant association between leaner BMI categories and an increased risk of asthma was observed only in subjects

Table 1. Proportions of subjects in all BMI categories

BMI category	Males (n = 11,237)		Females (n = 11,725)	
	n	%	n	%
Underweight				
≤ 16.99	121	1.2	283	2.4
17.00–18.49	394	3.5	1,064	9.1
Normal range				
18.50–22.99	5,272	46.9	6,479	55.3
23.00–24.99	2,648	23.6	1,955	16.7
Overweight				
Pre-obese				
25.00–27.49	1,806	16.2	1,165	9.9
27.50–29.99	659	5.9	512	4.4
Obese				
≥ 30.00	337	3.0	267	2.9

aged 45–79 years. This association did not change when the same analysis was repeated after the limitation of subjects to lifetime nonsmokers (data not shown).

Discussion

In this study, not only BMI categories greater than 25.00 but also a BMI category of 23.00–24.99 in females was significantly associated with increased risks of current asthma and respiratory symptoms compared with the reference BMI category (18.50–22.99). Although there are numerous studies showing the association between BMI and the risk of asthma, most of them were conducted on non-Asian populations and showed that a BMI greater than 25.00 or 30.00 is associated with an increased risk of asthma or respiratory symptoms [2–7]. However, to the best of our knowledge, none of the studies except one prospective study on nurses in the USA [19] has shown such a low BMI threshold in terms of an increased risk of asthma. This finding suggests that Asian populations are susceptible to an increased weight in association with the risk of asthma as well as other noncommunicable diseases.

In this study, we used the Japanese version of the ECRHS questionnaire, which is a highly validated questionnaire for asthma and respiratory symptoms [17]. The original ECRHS questionnaire has been used on young adults mainly in European countries, and has also shown the association of BMI with asthma and respiratory symptoms [6]. Using a cutoff point of 25.00, men with a BMI of 25.00–30.00 are more likely to have wheeze with shortness of breath or wheeze in the absence of a cold

Table 2. Prevalences (%) and adjusted odds ratios (95% CI) for current asthma and respiratory symptoms associated with body mass index categories

	Males (n = 11,237)		Females (n = 11,724)	
	prevalence, %	OR	prevalence, %	OR
<i>Current asthma</i>				
BMI category				
≤16.99	5.8	1.23 (0.49–3.11)	6.4	1.62 (0.97–2.68)
17.00–18.49	6.9	2.07 (1.34–3.22)	3.6	0.89 (0.63–1.27)
18.50–22.99	3.5	1	3.7	1
23.00–24.99	3.6	1.11 (0.86–1.44)	5.0	1.49 (1.16–1.92)
25.00–27.49	3.9	1.22 (0.92–1.63)	5.7	1.85 (1.38–2.49)
27.50–29.99	6.1	1.94 (1.35–2.78)	5.7	1.83 (1.21–2.76)
≥30.00	10.1	3.31 (2.23–4.92)	9.0	3.02 (1.92–4.74)
<i>Wheeze</i>				
BMI category				
≤16.99	15.7	1.47 (0.86–2.59)	12.0	1.55 (1.06–2.28)
17.00–18.49	14.0	1.48 (1.09–2.02)	7.4	0.96 (0.75–1.24)
18.50–22.99	9.8	1	7.6	1
23.00–24.99	10.8	1.16 (0.99–1.36)	9.7	1.34 (1.11–1.61)
25.00–27.49	12.5	1.36 (1.14–1.62)	12.2	1.78 (1.44–2.19)
27.50–29.99	15.8	1.88 (1.49–2.39)	14.3	2.12 (1.60–2.79)
≥30.00	17.5	2.24 (1.64–3.04)	20.6	3.42 (2.47–4.73)
<i>Wheeze with breathlessness</i>				
BMI category				
≤16.99	9.1	1.27 (0.63–2.57)	8.2	1.72 (1.10–2.71)
17.00–18.49	9.4	1.66 (1.14–2.43)	4.8	1.03 (0.76–1.41)
18.50–22.99	5.8	1	4.6	1
23.00–24.99	6.7	1.24 (1.02–1.51)	5.8	1.29 (1.02–1.63)
25.00–27.49	7.2	1.30 (1.04–1.62)	7.0	1.67 (1.28–2.18)
27.50–29.99	9.0	1.82 (1.35–2.45)	8.5	2.11 (1.49–2.98)
≥30.00	14.3	3.20 (2.27–4.50)	11.8	2.94 (1.95–4.42)
<i>Wheeze without a cold</i>				
BMI category				
≤16.99	13.2	1.82 (1.02–3.27)	9.2	1.94 (1.26–3.00)
17.00–18.49	9.8	1.54 (1.06–2.22)	5.3	1.11 (0.82–1.50)
18.50–22.99	6.5	1	4.6	1
23.00–24.99	7.2	1.21 (0.98–1.46)	6.4	1.46 (1.17–1.84)
25.00–27.49	8.5	1.42 (1.15–1.75)	8.0	1.92 (1.49–2.48)
27.50–29.99	10.7	1.98 (1.49–2.61)	8.3	1.96 (1.38–2.80)
≥30.00	11.9	2.29 (1.59–3.30)	10.6	2.73 (1.79–4.16)

Figures in parentheses are 95% CI.

Adjusted for age group, smoking status, allergic rhinitis and pet ownership.

than those with a BMI of 20.00–25.00 with an OR of 1.26 (95% CI 1.07–1.49) or 1.22 (95% CI 1.05–1.42). However, among females, a BMI of 25.00–30.00 is not significantly associated with respiratory symptoms compared with a BMI of 20.00–25.00, and only a BMI greater than 30.00 is associated with respiratory symptoms. Data from the Na-

tional Health and Nutrition Examination Survey in the USA [2] also shows that a BMI of 25.0–29.9 is not associated with an increased risk of asthma compared with the reference BMI group (18.5–24.9); only a BMI higher than 30.0 is associated with asthma with an OR of 1.43 (95% CI 1.07–1.92). Compared with these findings from large-

Table 3. Prevalences and adjusted odds ratios for current asthma and respiratory symptoms associated with BMI categories stratified by age group

	Males				Females			
	20–44 years (n = 4,241)		45–79 years (n = 6,832)		20–44 years (n = 4,269)		45–79 years (n = 7,347)	
	prevalence, %	OR	prevalence, %	OR	prevalence, %	OR	prevalence, %	OR
<i>Current asthma</i>								
BMI category								
≤16.99	3.1	0.63 (0.08–4.73)	7.1	1.74 (0.61–4.99)	5.2	0.91 (0.41–2.02)	7.4	2.85 (1.47–5.52)
17.00–18.49	4.9	1.13 (0.56–2.29)	8.3	3.61 (2.05–6.34)	3.8	0.74 (0.46–1.17)	3.2	1.24 (0.70–2.20)
18.50–22.99	4.7	1	2.7	1	5.0	1	2.7	1
23.00–24.99	4.6	1.05 (0.71–1.54)	3.1	1.21 (0.85–1.72)	7.0	1.40 (0.93–2.12)	4.2	1.60 (1.16–2.22)
25.00–27.49	5.1	1.15 (0.74–1.79)	3.4	1.33 (0.91–1.96)	9.8	2.00 (1.23–3.37)	4.8	1.86 (1.29–2.70)
27.50–29.99	5.9	1.40 (0.81–2.43)	6.1	2.60 (1.66–4.25)	9.5	2.08 (1.00–4.31)	4.8	1.85 (1.11–3.07)
≥30.00	12.4	3.07 (1.90–4.97)	7.2	3.58 (1.78–7.21)	12.9	3.04 (1.54–5.99)	7.2	2.96 (1.61–5.46)
<i>Wheeze</i>								
BMI category								
≤16.99	9.4	1.02 (0.30–3.41)	18.8	1.69 (0.93–3.08)	9.7	1.04 (0.57–1.91)	14.2	2.15 (1.32–3.52)
17.00–18.49	9.3	1.05 (0.62–1.78)	18.1	1.85 (0.25–2.72)	6.4	0.76 (0.54–1.09)	8.8	1.26 (0.88–1.82)
18.50–22.99	9.3	1	10.1	1	8.0	1	7.2	1
23.00–24.99	9.5	1.08 (0.82–1.43)	11.3	1.23 (1.01–1.49)	10.2	1.31 (0.92–1.84)	9.3	1.37 (1.10–1.70)
25.00–27.49	8.8	0.99 (0.71–1.39)	14.3	1.58 (1.28–1.94)	17.6	2.50 (1.67–3.73)	10.9	1.65 (1.29–2.12)
27.50–29.99	10.7	1.15 (0.75–1.77)	19.6	2.45 (1.84–3.28)	15.8	2.29 (1.27–4.16)	13.6	2.12 (1.54–2.91)
≥30.00	18.6	2.38 (1.60–3.54)	15.1	1.84 (1.12–3.03)	17.6	2.64 (1.45–4.80)	22.1	3.84 (2.61–5.67)
<i>Wheeze with breathlessness</i>								
BMI category								
≤16.99	3.1	0.56 (0.08–4.20)	11.8	1.55 (0.73–3.31)	6.8	1.15 (0.57–2.36)	9.5	2.39 (1.33–4.29)
17.00–18.49	5.5	1.10 (0.56–2.15)	12.8	2.13 (1.34–3.38)	4.3	0.82 (0.54–1.26)	5.6	1.38 (0.88–2.16)
18.50–22.99	5.5	1	6.0	1	5.1	1	4.2	1
23.00–24.99	6.5	1.31 (0.93–1.84)	6.8	1.24 (0.97–1.58)	6.2	1.24 (0.80–1.91)	5.4	1.33 (1.00–1.76)
25.00–27.49	5.1	1.01 (0.66–1.57)	8.1	1.45 (1.12–1.89)	10.3	2.21 (1.34–3.63)	6.3	1.57 (1.14–2.16)
27.50–29.99	5.9	1.21 (0.70–2.08)	11.2	2.25 (1.56–3.23)	9.7	2.19 (1.05–4.5)	8.1	2.13 (1.44–3.17)
≥30.00	16.5	3.81 (2.47–5.86)	10.1	2.23 (1.25–4.00)	9.6	2.15 (0.99–4.63)	12.8	3.41 (2.10–5.55)
<i>Wheeze without a cold</i>								
BMI category								
≤16.99	6.3	1.07 (0.25–4.60)	16.5	2.11 (1.11–4.02)	7.5	1.28 (0.65–2.54)	10.8	2.83 (1.62–4.95)
17.00–18.49	7.2	1.34 (0.74–2.44)	12.1	1.69 (1.06–2.69)	4.3	0.80 (0.52–1.23)	6.5	1.63 (1.07–2.50)
18.50–22.99	5.9	1	6.9	1	5.3	1	4.1	1
23.00–24.99	6.7	1.26 (0.90–1.76)	7.5	1.20 (0.96–1.52)	7.6	1.49 (1.00–2.22)	5.8	1.50 (1.14–1.98)
25.00–27.49	6.2	1.17 (0.78–1.75)	9.7	1.55 (1.21–1.98)	11.7	2.46 (1.53–3.95)	7.1	1.86 (1.36–2.53)
27.50–29.99	7.4	1.44 (0.88–2.67)	13.1	2.33 (1.66–3.28)	9.6	2.02 (0.97–4.21)	7.6	2.03 (1.35–3.06)
≥30.00	13.4	2.75 (1.74–4.36)	8.7	1.62 (0.87–3.01)	10.8	2.40 (1.15–5.00)	10.6	2.92 (1.74–4.90)

Figures in parentheses are 95% CI. Adjusted for age group, smoking status, allergic rhinitis, and pet ownership.

scale studies performed on Western populations, it can be said that the association between BMI and asthma in our study was more apparent.

Females in this study presented a consistently lower BMI threshold for an increased risk of asthma than males. This susceptibility of overweight females to asthma is

compatible with the findings of previous studies [1, 3, 4]. Some studies have suggested that sex hormones play a role in modulating the association between obesity and the risk of asthma. Castro-Rodriguez et al. [20] have shown that the risk of developing asthma in girls who gain weight is also particularly high in those with early