

of *IL28B* and clinical response to PEG-IFN α /RBV. Both the *IL28B* minor allele and higher expressions of *RIG-I* and *ISG15* as well as higher *RIG-I/IPS-1* ratio are independently associated with NVR. Innate immune responses in *IL28B* minor patients may have adapted to a different equilibrium compared with that in *IL28B* major patients. Our data will advance both understanding of the pathogenesis of HCV resistance and the development of new antiviral therapy targeted toward the innate immune system.

References

- Kiyosawa K, Sodeyama T, Tanaka E, Gibo Y, Yoshizawa K, Nakano Y, et al. Interrelationship of blood transfusion, non-A, non-B hepatitis and hepatocellular carcinoma: analysis by detection of antibody to hepatitis C virus. *HEPATOLOGY* 1990;12:671-675.
- Zeuzem S, Pawlotsky JM, Lukasiewicz E, von Wagner M, Goulis I, Lurie Y, et al. DITTO-HCV Study Group. International, multicenter, randomized, controlled study comparing dynamically individualized versus standard treatment in patients with chronic hepatitis C. *J Hepatol* 2005;43:250-257.
- Tanaka Y, Nishida N, Sugiyama M, Kurosaki M, Matsuura K, Sakamoto N, et al. Genome-wide association of *IL28B* with response to pegylated IFN- α and ribavirin therapy for chronic hepatitis C. *Nat Genet* 2009;10:1105-1109.
- Suppiah V, Moldovan M, Ahlenstiel G, Berg T, Weltman M, Abate ML, et al. *IL28B* is associated with response to chronic hepatitis C IFN- α and ribavirin therapy. *Nat Genet* 2009;10:1100-1104.
- Ge D, Fellay J, Thompson AJ, Simon JS, Shianna KV, Urban TJ, et al. Genetic variation in *IL28B* predicts hepatitis C treatment-induced viral clearance. *Nature* 2009;461:399-401.
- Biron CA. Initial and innate responses to viral infections—pattern setting in immunity or disease. *Curr Opin Microbiol* 1999;2:374-381.
- Yoneyama M, Kikuchi M, Natsukawa T, Shinobu N, Imaizumi T, Miyagishi M, et al. The RNA helicase *RIG-I* has an essential function in double-stranded RNA-induced innate antiviral responses. *Nat Immunol* 2004;5:730-737.
- Yoneyama M, Kikuchi M, Matsumoto K, Imaizumi T, Miyagishi M, Taira K, et al. Shared and unique functions of the DExD/H-box helicases *RIG-I*, *MDA5*, and *LGP2* in antiviral innate immunity. *J Immunol* 2005;175:2851-2858.
- Meylan E, Curran J, Hofmann K, Moradpour D, Binder M, Barrenschlager R, et al. Cardif is an adaptor protein in the *RIG-I* antiviral pathway and is targeted by hepatitis C virus. *Nature* 2005;437:1167-1172.
- Kawai T, Takahashi K, Sato S, Coban C, Kumar H, Kato H, et al. IPS-1, an adaptor triggering *RIG-I*- and *Mda5*-mediated type I interferon induction. *Nat Immunol* 2005;6:981-988.
- Seth RB, Sun L, Ea CK, Chen ZJ. Identification and characterization of MAVS, a mitochondrial antiviral signaling protein that activates NF- κ B and IRF 3. *Cell* 2005;122:669-682.
- Xu LG, Wang YY, Han KJ, Li LY, Zhai Z, Shu HB. VISA is an adaptor protein required for virus-triggered IFN- β signaling. *Mol Cell* 2005;19:727-740.
- Rothenfusser S, Goutagny N, DiPerna G, Gong M, Monks BG, Schoenemeyer A, et al. The RNA helicase *Lgp2* inhibits TLR-independent sensing of viral replication by retinoic acid-inducible gene-I. *J Immunol* 2005;175:5260-5268.
- Arimoto K, Takahashi H, Hishiki T, Konishi H, Fujita T, Shimotohno K. Negative regulation of the *RIG-I* signaling by the ubiquitin ligase *RNF125*. *Proc Natl Acad Sci U S A* 2007;104:7500-7505.
- Zhao C, Denison C, Huibregtse JM, Gygi S, Krug RM. Human *ISG15* conjugation targets both IFN-induced and constitutively expressed proteins functioning in diverse cellular pathways. *Proc Natl Acad Sci U S A* 2005;102:10200-10205.
- Schwer H, Liu LQ, Zhou L, Little MT, Pan Z, Hetherington CJ, et al. Cloning and characterization of a novel human ubiquitin-specific protease, a homologue of murine *UBP43* (*Usp18*). *Genomics* 2000;65:44-52.
- Malakhov MP, Malakhova OA, Kim KI, Ritchie KJ, Zhang DE. *UBP43* (*USP18*) specifically removes *ISG15* from conjugated proteins. *J Biol Chem* 2002;277:9976-9981.
- Li XD, Sun L, Seth RB, Pineda G, Chen ZJ. Hepatitis C virus protease NS3/4A cleaves mitochondrial antiviral signaling protein off the mitochondria to evade innate immunity. *Proc Natl Acad Sci U S A* 2005;102:17717-17722.
- Asahina Y, Izumi N, Hirayama I, Tanaka T, Sato M, Yasui Y, et al. Potential relevance of cytoplasmic viral sensors and related regulators involving innate immunity in antiviral response. *Gastroenterology* 2008;134:1396-1405.
- Tanabe Y, Sakamoto N, Enomoto N, Kurosaki M, Ueda E, Maekawa S, et al. Synergistic inhibition of intracellular hepatitis C virus replication by combination of ribavirin and interferon- α . *J Infect Dis* 2004;189:1129-1139.
- Honda M, Sakai A, Yamashita T, Nakamoto Y, Mizukoshi E, Sakai Y, et al. Hepatic ISG expression is associated with genetic variation in interleukin 28B and the outcome of IFN therapy for chronic hepatitis C. *Gastroenterology* 2010;139:499-509.
- Urban TJ, Thompson AJ, Bradic SS, Fellay J, Schuppan D, Cronin KD, et al. *IL28B* genotype is associated with differential expression of intrahepatic interferon-stimulated genes in patients with chronic hepatitis C. *HEPATOLOGY* 2010;52:1888-1896.
- Dill MT, Duong FHT, Vogt JE, Bibert S, Bochud PY, Terracciano L, et al. Interferon-induced gene expression is a stronger predictor of treatment response than *IL28B* genotype in patients with hepatitis C. *Gastroenterology* 2011;140:1021-1031.
- Yu ML, Huang CF, Huang JF, Chang NC, Yang JF, Lin ZY, et al. Role of interleukin-28B polymorphism in the treatment of hepatitis C virus genotype 2 infection in Asian patients. *HEPATOLOGY* 2011;53:7-13.
- Thomas DL, Thio CL, Martin MP, Qi Y, Ge D, O'Huigin C, Kidd J, et al. Genetic variation in *IL28B* and spontaneous clearance of hepatitis C virus. *Nature* 2009;461:798-802.
- Akuta N, Suzuki F, Hirakawa M, Kawamura Y, Yatsuji H, Sezaki H, et al. Amino acid substitution in hepatitis C virus core region and genetic variation near the interleukin 28B gene predict viral response to terapeutic with pegIFN and ribavirin. *HEPATOLOGY* 2010;52:421-429.

Data mining model using simple and readily available factors could identify patients at high risk for hepatocellular carcinoma in chronic hepatitis C

Masayuki Kurosaki¹, Naoki Hiramatsu², Minoru Sakamoto³, Yoshiyuki Suzuki⁴, Manabu Iwasaki⁵, Akihiro Tamori⁶, Kentaro Matsuura⁷, Sei Kakinuma⁸, Fuminaka Sugauchi⁹, Naoya Sakamoto⁸, Mina Nakagawa⁸, Namiki Izumi^{1,*}

¹Division of Gastroenterology and Hepatology, Musashino Red Cross Hospital, Tokyo, Japan; ²Department of Gastroenterology and Hepatology, Osaka University Graduate School of Medicine, Osaka, Japan; ³First Department of Internal Medicine, University of Yamanashi, Yamanashi, Japan; ⁴Department of Hepatology, Toranomon Hospital, Tokyo, Japan; ⁵Department of Computer and Information Science, Seikei University, Tokyo, Japan; ⁶Department of Hepatology, Osaka City University Medical School, Osaka, Japan; ⁷Department of Gastroenterology and Metabolism, Nagoya City University Graduate School of Medical Sciences, Nagoya, Japan; ⁸Department of Gastroenterology and Hepatology, Tokyo Medical and Dental University, Tokyo, Japan; ⁹Department of Gastroenterology, Nagoya Kosei Medical Welfare Center, Nagoya, Japan

Background & Aims: Assessment of the risk of hepatocellular carcinoma (HCC) development is essential for formulating personalized surveillance or antiviral treatment plan for chronic hepatitis C. We aimed to build a simple model for the identification of patients at high risk of developing HCC.

Methods: Chronic hepatitis C patients followed for at least 5 years ($n = 1003$) were analyzed by data mining to build a predictive model for HCC development. The model was externally validated using a cohort of 1072 patients (472 with sustained virological response (SVR) and 600 with nonSVR to PEG-interferon plus ribavirin therapy).

Results: On the basis of factors such as age, platelet, albumin, and aspartate aminotransferase, the HCC risk prediction model identified subgroups with high-, intermediate-, and low-risk of HCC with a 5-year HCC development rate of 20.9%, 6.3–7.3%, and 0–1.5%, respectively. The reproducibility of the model was confirmed through external validation ($r^2 = 0.981$). The 10-year HCC development rate was also significantly higher in the high- and intermediate-risk group than in the low-risk group (24.5% vs. 4.8%; $p < 0.0001$). In the high- and intermediate-risk group, the incidence of HCC development was significantly reduced in patients with SVR compared to those with nonSVR (5-year rate, 9.5% vs. 4.5%; $p = 0.040$).

Conclusions: The HCC risk prediction model uses simple and readily available factors and identifies patients at a high risk of HCC development. The model allows physicians to identify patients requiring HCC surveillance and those who benefit from IFN therapy to prevent HCC.

Keywords: Decision tree; Prediction; Pegylated interferon; Ribavirin; Risk.
Received 27 May 2011; received in revised form 8 August 2011; accepted 4 September 2011

* Corresponding author. Address: Division of Gastroenterology and Hepatology, Musashino Red Cross Hospital, 1-26-1 Kyonan-cho, Musashino-shi, Tokyo 180-8610, Japan. Tel.: +81 422 32 3111; fax: +81 422 32 9551.
E-mail address: nizumi@musashino.jrc.or.jp (N. Izumi).



© 2011 European Association for the Study of the Liver. Published by Elsevier B.V. All rights reserved.

Introduction

Hepatocellular carcinoma (HCC) is the sixth most common cancer worldwide [1] and its incidence is increasing in many countries [2]. Chronic viral hepatitis is responsible for 80% of all HCC cases [2]. The need to conduct HCC surveillance should be determined according to the risk of HCC development because this surveillance is cost-effective only in populations with an annualized cancer development rate of $\geq 1.5\%$ [3]. The annualized rate of developing HCC from type C liver cirrhosis is 2–8% [4–6], indicating that this population with type C liver cirrhosis needs surveillance. However, the annualized rate of HCC development is $< 1.5\%$ in patients with chronic hepatitis C but without cirrhosis and the benefit of surveillance for all patients with chronic hepatitis has not yet been established [3]. HCC surveillance may be needed for patients with advanced fibrosis because the risk of HCC development increases in parallel with the progression of liver fibrosis [7,8]. Liver biopsy is the most accurate means of diagnosing fibrosis, but a single liver biopsy cannot indicate long-term prognosis because liver fibrosis progresses over time. Serial liver biopsies are not feasible because of the procedure's invasiveness. Moreover, factors other than fibrosis, such as advanced age, obesity, sex, lower albumin, and low platelet counts, also contribute to the development of HCC from chronic hepatitis C [8–11]. Therefore, these factors must be considered while assessing the risk of HCC development.

A meta-analysis of controlled trials [12] has shown that interferon (IFN) therapy reduced the rate of HCC development in patients with type C liver cirrhosis. However, there was a marked heterogeneity in the magnitude of the prevention effect

Research Article

of IFN on HCC development among the studies, probably due to the large differences in the baseline rate of HCC development among the different trials [12]. Whether the incidence of HCC development could be reduced in all patients with chronic hepatitis C, especially in those without liver cirrhosis, remains to be elucidated.

Data mining analysis, unlike conventional statistical analysis, is performed in an exploratory manner without considering a predefined hypothesis. Decision tree analysis, the major component of data mining analysis, is used to extract relevant factors from among various factors. These relevant factors are then combined in an orderly sequence to identify rules for predicting the incidence of the target outcome [13]. Data mining analysis has been used to define prognostic factors in various diseases [14–20]. In the field of hepatic diseases, data mining analysis has proven to be a useful tool for predicting early response [21], sustained virological response (SVR) [22–25], relapse [26], and adverse events [27] in patients with chronic hepatitis C treated with pegylated interferon (PEG-IFN) plus ribavirin (RBV). The findings of data mining analysis are expressed as flowcharts and are therefore easily understood [28] and readily available for clinical use, even by physicians without a detailed understanding of statistics.

In the present study, data mining analysis was used to identify risk factors for HCC development in a cohort of patients with chronic hepatitis C who had been followed for at least 5 years. An HCC risk prediction model was constructed on the basis of simple and generally available tests because the goal was to make the model easy to use in the clinic. The suitability, reproducibility, and generalizability of the results were validated using the data of an external cohort that was independent of the model derivation cohort.

Materials and methods

Patients

The model derivation cohort consisted of 1003 chronic hepatitis C patients without cirrhosis who had a non-sustained virological response (nonSVR) to previous IFN administered at the Musashino Red Cross Hospital and were followed for at least 5 years. Patients who had SVR or those who were followed for less than 5 years were not included. An analytical database on age, body mass index, albumin, aspartate aminotransferase (AST) levels, alanine aminotransferase (ALT) levels, γ -glutamyltransferase (GGT) levels, total bilirubin levels, total cholesterol levels, hemoglobin levels, and platelet count at the start of the observation was created. Histological data such as fibrosis stage, activity grade, or degree of steatosis was not included in the database because the goal of the present study was to make the model on the basis of simple and generally available tests. The patients who developed HCC more than 5 years after the start of the observation were considered not to have developed HCC by the 5-year point because the model was intended to predict HCC development within 5 years. The 1072 chronic hepatitis C patients included in the external validation cohort were treated with PEG-IFN and RBV at the University of Yamaguchi, Tokyo Medical and Dental University, Osaka University, Osaka City University, Nagoya City University, or Toranomon Hospital and followed for at least 5 years. Among them, 600 had nonSVR and 472 had SVR. Data from nonSVR patients in this external cohort were used for external validation of the HCC prediction model. To assess the preventive effect of PEG-IFN plus RBV therapy on HCC development, the cumulative HCC development rate was compared between SVR and nonSVR patients in the external validation cohort after stratification by the risk of HCC development as determined by data mining analysis. Informed consent was obtained from each patient. The study protocol conformed to the ethical guidelines of the Declaration of Helsinki and was approved by the institutional review committees of all concerned hospitals.

HCC surveillance and diagnosis

HCC surveillance was conducted by performing abdominal ultrasonography every 4–6 months. Contrast-enhanced computer tomography, magnetic resonance imaging, or angiography were performed when abdominal ultrasonography suggested a new lesion suspicious for HCC. Classical HCC was diagnosed for tumors showing vascular enhancement with washout on at least two types of diagnostic imaging. Tumor biopsy was used to diagnose tumors with non-classical imaging findings.

Statistical analysis

The IBM-SPSS Modeler 13 (IBM SPSS Inc., Chicago, IL, USA) was used for decision tree analysis. The statistical methods used have been described previously [21,22,24–27]. In brief, the software searched the analytical database for the factor that most effectively predicted HCC development and for its cutoff value. The patients were divided into two groups according to that predictor. Each divided group was repeatedly assessed and divided according to this 2-choice branching method. Branching was stopped when the number of patients decreased to ≤ 20 to avoid over fitting. Finally, an HCC risk prediction model was created through this analysis. The model classified patients into subgroups with different HCC development rates in a flowchart form. For model validation, nonSVR patients from an external cohort were individually fitted into the model and classified into the subgroups and the HCC development rates of those subgroups were then calculated. The suitability and reproducibility of the model were validated by comparing the subgroup HCC development rates of the model derivation group to those of the validation group.

On univariate analysis, Student's *t*-test was used for continuous variables and Fisher's exact test was used for categorical data. Logistic regression was used for multivariate analysis. A log-rank test for Kaplan–Meier analysis was used to statistically test HCC development rates over time. *p*-Values of <0.05 were considered significant. SPSS Statistics 18 (IBM SPSS Inc.) was used for these analyses.

Results

Univariate and multivariate analysis of factors associated with HCC development

The baseline characteristics of patients are shown in Table 1. The 5-year HCC development rate in the model derivation group was 6.2%, which did not differ significantly from the rate of 6.0% in the nonSVR group of the external cohort, but the rate of 2.0% in the SVR group of the external cohort was significantly lower than that in the model derivation group ($p = 0.0003$) and the nonSVR group of the external cohort ($p = 0.0012$). On univariate analysis, the factors found to be associated with HCC development in the model derivation cohort were age, AST levels, albumin levels, total cholesterol levels, and platelet count. On multivariate analysis, age (odds ratio 1.086), albumin levels (odds ratio 0.248), and platelet count (odds ratio 0.842) were significant predictors of HCC development (Table 2).

HCC risk prediction model by data mining analysis

The results of decision tree analysis are presented in Fig. 1. Age was selected as the first predictor. The 5-year HCC development rate was 3.4% in younger patients (<60 years) and 8.6% in older patients (≥ 60 years). The second predictor for younger patients (<60 years) was platelet count. The HCC development rate was 6.9% in patients with a lower platelet count ($<150 \times 10^9/L$) and 0.8% in patients with a higher count ($\geq 150 \times 10^9/L$). The second predictor for older patients (≥ 60 years) was also platelet count. The HCC development rate was 13.1% in patients with a lower platelet count ($<150 \times 10^9/L$) and 1.8% in patients with a higher count ($\geq 150 \times 10^9/L$). The third predictor was albumin levels,

Table 1. Baseline characteristics of patients for model deviation and external validation.

	Model derivation (n = 1003)	External cohort, non-SVR (n = 600)	External cohort, SVR (n = 472)
Sex: Male/Female*	463 (46%)/540 (54%)	306 (51%)/294 (49%)	299 (63%)/173 (37%)
Age (yr)	57.3 (11.1)	55.9 (9.6)	51.4 (10.6)
Body mass index (kg/m ²)	23.5 (3.2)	23.4 (3.3)	23.3 (3.1)
Albumin (g/dl)	4.1 (0.3)	4.0 (0.4)	4.0 (0.3)
AST (IU/L)	64.2 (36.5)	67.3 (43.8)	62.5 (48.3)
ALT (IU/L)	80.6 (55.1)	81.2 (62.3)	88.6 (82.1)
GGT (IU/L)	59.3 (50.5)	67.6 (65.1)	55.7 (71.2)
Total cholesterol (mg/dl)	172.1 (31.5)	168.2 (31.0)	174.3 (33.7)
Platelet (10 ⁹ /L)	154.0 (53.0)	153.7 (53.2)	176.6 (49.7)
Hemoglobin (g/dl)	13.3 (1.5)	14.2 (1.5)	14.4 (1.4)
HCC development within 5 years: n (%)	62 (6.2%)	36 (6.0%)	10 (2.0%)

Data expressed as mean (standard deviation) unless otherwise indicated.

AST, aspartate aminotransferase; ALT, alanine aminotransferase; GGT, gamma-glutamyltransferase; HCC, hepatocellular carcinoma; SVR, sustained virological response.

*Data expressed as number of patients (percentage).

whose cutoff value was 3.75 g/dl in patients with a higher platelet count ($\geq 150 \times 10^9/L$). The HCC development rate was 6.3% when albumin levels were lower (<3.75 g/dl) and 1.5% when levels were higher (≥ 3.75 g/dl). The cutoff value for albumin levels was 4.0 g/dl in patients with a lower platelet count ($<150 \times 10^9/L$). The HCC development rate was 20.9% when albumin levels were lower (<4.0 g/dl) and 6.4% when levels were higher (≥ 4.0 g/dl). The fourth and final predictor was AST levels. The HCC development rate was 7.3% when AST levels were at least 40 IU/L and 0% when the levels were <40 IU/L. On the basis of this analysis, seven subgroups with a 5-year HCC development rate of 0–20.9% were identified. The area under the receiver operating characteristic curve according to the HCC risk prediction model was 0.817.

External validation of the HCC risk prediction model with an independent external cohort

Six hundred nonSVR patients from an external cohort were fitted into the HCC risk prediction model and classified into the seven subgroups. The 5-year HCC development rate of these subgroups was 0–17.9%. The HCC development rate in the individual subgroups of the model derivation group was closely correlated to that in the corresponding subgroups of the external validation group (Fig. 2; correlation coefficient $r^2 = 0.981$). The HCC development rate in the subgroup of patients with the highest risk of HCC development (high-risk group) according to the model older age (≥ 60 years) with a lower platelet count ($<150 \times 10^9/L$) and lower albumin levels (<4.0 g/dl) was 20.9% in the model derivation

group and 17.9% in the external validation group. The intermediate-risk group or the patients with an HCC development rate of at least 5% consisted of the following three subgroups: (1) older age (≥ 60 years), lower platelet count ($<150 \times 10^9/L$), higher albumin levels (≥ 4.0 g/dl), and higher AST levels (≥ 40 IU/L); (2) older age (≥ 60 years), higher platelet count ($\geq 150 \times 10^9/L$), and lower albumin levels (<3.75 g/dl); and (3) younger age (<60 years) and lower platelet count ($<150 \times 10^9/L$). In these intermediate-risk groups, the 5-year HCC development rate was 6.3–7.3% in the model derivation group and 5.3–7.9% in the external validation group. The low-risk group consisted of the following three subgroups: (1) younger age (<60 years) and higher platelet count ($\geq 150 \times 10^9/L$); (2) older age (≥ 60 years), lower platelet count ($<150 \times 10^9/L$), higher albumin levels (≥ 4.0 g/dl), and lower AST levels (<40 IU/L); and (3) older age (≥ 60 years), higher platelet count ($\geq 150 \times 10^9/L$), and higher albumin levels (≥ 3.75 g/dl). In these low-risk groups, the 5-year HCC development rate was 0–1.5% in the model derivation group and 0–2.9% in the external validation group.

Predictability of the HCC risk prediction model on HCC development rate beyond 5 years

Cumulative HCC development rates in the high-, intermediate-, and low-risk groups were compared over time using the Kaplan–Meier method. The 10-year rates were 28.9% in the high-risk group, 22.9% in the intermediate-risk group, and 4.8% in the low-risk group (Fig. 3A). The high and intermediate-risk group created by pooling data from the high- and intermediate-risk groups had a significantly higher cumulative HCC development rate than the low-risk group beyond 5 years (Fig. 3B; 5-year rate, 11.6% vs. 1.0%; 10-year rate, 24.5% vs. 4.8%; $p < 0.0001$).

Effect of response to PEG-IFN plus RBV therapy in the reduction of HCC development: analysis stratified by the HCC risk prediction model

The 600 nonSVR patients and 472 SVR patients in the external cohort were fitted into the HCC risk prediction model and

Table 2. Multivariable analysis of factors associated with subsequent development of HCC within 5 years.

	Odds ratio	95% CI	p value
Age	1.086	1.029–1.146	0.003
Albumin	0.248	0.100–0.613	0.003
Platelet	0.842	0.769–0.921	<0.0001

CI, confidence interval.

Research Article

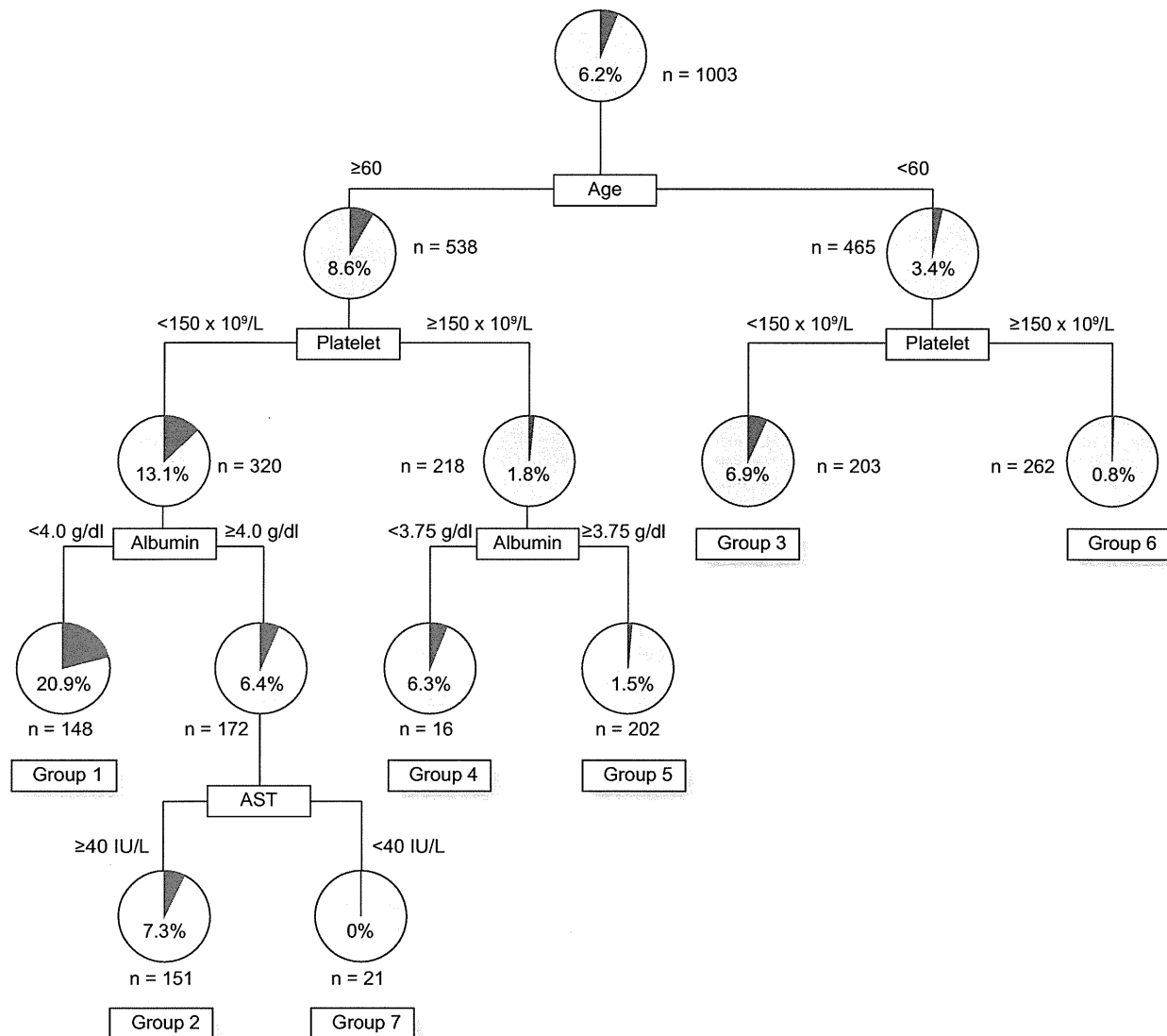


Fig. 1. The decision tree model of HCC development within 5 years. Boxes indicate the factors used to differentiate patients and the cutoff values for those different groups. Pie charts indicate the HCC development rate within 5 years for each group of patients after differentiation. Terminal groups of patients differentiated by analysis are numbered from 1 to 7.

classified into the high-and intermediate-risk group or the low-risk group, as defined above. The HCC development rate was significantly lower in SVR patients than in nonSVR patients in the high-and intermediate-risk group (5-year HCC rate, 9.5% vs. 4.5%; $p = 0.040$, log-rank test). In the low-risk group, the 5-year rate was 1.8% in nonSVR patients and 0.9% in SVR patients. Both rates were low and not significantly different ($p = 0.331$, log-rank test) (Fig. 4).

Discussion

An awareness of the risk of HCC development in the context of routine care for chronic hepatitis C is essential for formulating

an HCC surveillance plan personalized for individual patients. The risk of developing HCC from chronic hepatitis is lower than that from cirrhosis [7]; therefore, across-the-board surveillance for chronic hepatitis C is not recommended [3]. A method to easily determine this risk, without performing serial liver biopsies, would be extremely significant clinically. In the present study, an HCC risk prediction model that included the factors such as age, platelet count, albumin levels, and AST levels was constructed. The model was found to have excellent reproducibility when validated with an external cohort. This model could identify subgroups of chronic hepatitis C patients at high risk of HCC development; the 5-year HCC development rate for the high- and intermediate-risk groups was 11.6%, yielding an annual incidence of 2.3%. This HCC risk prediction model requires only

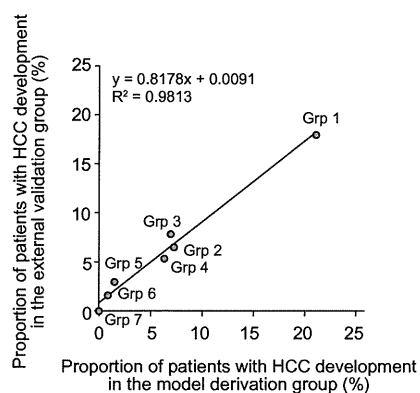


Fig. 2. External validation of the decision tree model with an independent cohort. Each patient in the external validation group was allocated to groups 1–7 following the flowchart of the decision tree. The HCC development rates were then calculated for each group and the graph plotted. The x-axis represents the HCC development rate in the model derivation group, and the y-axis represents the HCC development rate in the external validation group. The HCC development rates in each subgroup of patients are closely correlated between the model derivation group and the external validation group (correlation coefficient: $R^2 = 0.981$).

simple test values that are readily obtained in routine care and can therefore be easily used at the patient bedside. The model can be used to identify patients with a high risk of HCC development and therefore requiring surveillance, thereby allowing the formulation of surveillance plans personalized for individual patients.

Advanced fibrosis has been reported as independent risk factors for HCC development [7,8]. Platelet counts and albumin levels, which were factors selected for discrimination of the risk of HCC development, are closely related to the stage of fibrosis. Their correlation with the HCC risk has been repeatedly demonstrated [9–11,29–31]. The present study confirmed the impact of old age and advanced fibrosis, as reflected by low platelet counts and albumin levels. These results are consistent with our previous report [32]. What is unique to the present study was the study design to build a simple and reliable model for

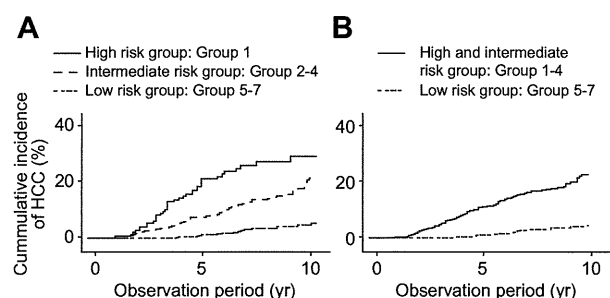


Fig. 3. Cumulative incidence of HCC development beyond 5 years in subgroups of patients defined by the decision tree model. Cumulative incidences of HCC in the groups classified by the decision tree model are compared. (A) The cumulative HCC development rate beyond 5 years is higher in the high- (group 1) and intermediate-risk (groups 2–4) groups compared to the low-risk group (groups 5–7). (B) The high and intermediate-risk group created by pooling data from the high- and intermediate-risk groups has a significantly higher cumulative HCC development rate than the low-risk group (5-year rate, 11.6% vs. 1.0%; 10-year rate, 24.5% vs. 4.8%; $p < 0.0001$).

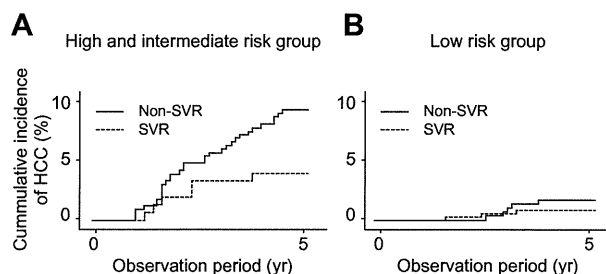


Fig. 4. Sustained virological response to PEG-IFN plus RBV therapy reduces the incidence of HCC development after stratification by the HCC risk. The 600 nonSVR patients and the 472 SVR patients in the external cohort were fitted into the HCC risk prediction model and classified into the high and intermediate-risk group or the low-risk group. The HCC development rate is significantly lower in SVR patients than in nonSVR patients in the high and intermediate-risk group (groups 1–4) (5-year HCC rate, 9.5% vs. 4.5%; $p = 0.040$). In the low-risk group (groups 5–7), the 5-year rate is 1.8% in nonSVR patients and 0.9% in SVR patients. Both rates are low and not significantly different ($p = 0.331$).

the prediction of HCC development that could be easily used in the clinic. For this purpose, a novel statistical method was used, histological factors were excluded in the analysis, the model derivation cohort was restricted to those who had nonSVR and had a long follow-up period duration (5 years), and the reproducibility of the model was independently validated by an external cohort. These are the major differences of the present study compared to our previous report. Many researchers have put a lot of efforts to formulate regression models for HCC prediction [9,10,33]. These prediction models are useful for identifying high-risk patients but are somewhat complicated to use at the bedside because they require calculations to be performed. Our prediction model is used simply by incorporating patients' data obtained through simple tests into the decision tree and following the flowchart. These prediction models based on factors easily accessible in routine clinical settings help physicians identify high-risk patients out of chronic hepatitis.

Viral eradication is the short-term goal of IFN therapy, but the ultimate goal is the prevention of HCC occurrence. Previous reports have shown that SVR to IFN therapy suppresses HCC occurrence in patients with type C liver cirrhosis and chronic hepatitis [7,12,30,34,35]. However, there is a marked heterogeneity in the magnitude of the treatment effect on the risk of HCC among studies, probably due to differences in the baseline risk of HCC among different trials [12]. Thus, the question remains whether the preventive effect of IFN therapy on HCC development could apply to all patients with chronic hepatitis C, especially those without liver cirrhosis. The result of the present study indicated that among high- and intermediate-risk patients, as assessed with our HCC risk prediction model, the cumulative HCC development rate was significantly reduced in SVR patients compared with nonSVR patients. This finding suggests that patients with chronic hepatitis, in whom disease has not yet progressed to hepatic cirrhosis but who are at a high risk of HCC development, benefit from antiviral treatment. The preventive effect of IFN on HCC development was not evident in low-risk patients within 5 years of observation. A longer observation term may be required to analyze the possible effect of antiviral therapy in these patients. Application of the present model on treatment decision may have limitations in that effect to prevent HCC development may differ in newer therapeutic agents such as protease

Research Article

inhibitors [36,37], and that low-risk patients may also benefit from therapy after a longer term observation period such as 15–20 years.

Patients with chronic hepatitis often have no subjective symptoms accompanying their disease and therefore have a low consciousness of the disease. The broad array of adverse reactions and the high cost of IFN therapy are frequent hurdles in motivating patients to undergo therapy. However, patients may be convinced to undergo therapy or remain motivated for continued therapy if they are made aware of their risk of HCC development and the preventive effect of IFN on HCC development.

In conclusion, a reproducible HCC risk prediction model, which includes the factors such as age, platelet count, albumin levels, and AST levels, was constructed to predict the 5-year HCC development rate in patients with chronic hepatitis C. The model requires only a combination of readily available test values and can therefore be easily used at the bedside. The information provided by the model allows the physician to identify patients requiring IFN therapy for the prevention of HCC and formulate plans for imaging HCC surveillance.

Conflict of interest

The authors who have taken part in this study declared that they do not have anything to disclose regarding funding or conflict of interest with respect to this manuscript.

Financial support

This study was supported by a Grant-in-Aid from the Ministry of Health, Labor and Welfare, Japan (H20-kanen-006).

References

- [1] Parkin DM, Bray F, Ferlay J, Pisani P. Global cancer statistics, 2002. *CA Cancer J Clin* 2005;55:74–108.
- [2] Bosch FX, Ribes J, Diaz M, Cleries R. Primary liver cancer: worldwide incidence and trends. *Gastroenterology* 2004;127:S5–S16.
- [3] Bruix J, Sherman M. Management of hepatocellular carcinoma. *Hepatology* 2005;42:1208–1236.
- [4] Fattovich G, Giustina G, Degos F, Tremolada F, Diodati G, Almasio P, et al. Morbidity and mortality in compensated cirrhosis type C: a retrospective follow-up study of 384 patients. *Gastroenterology* 1997;112:463–472.
- [5] Niederau C, Lange S, Heintges T, Erhardt A, Buschkamp M, Hurter D, et al. Prognosis of chronic hepatitis C: results of a large, prospective cohort study. *Hepatology* 1998;28:1687–1695.
- [6] Degos F, Christidis C, Ganne-Carrie N, Farmachidi JP, Degott C, Guettier C, et al. Hepatitis C virus related cirrhosis: time to occurrence of hepatocellular carcinoma and death. *Gut* 2000;47:131–136.
- [7] Yoshida H, Tateishi R, Arakawa Y, Sata M, Fujiyama S, Nishiguchi S, et al. Benefit of interferon therapy in hepatocellular carcinoma prevention for individual patients with chronic hepatitis C. *Gut* 2004;53:425–430.
- [8] Kurosaki M, Hosokawa T, Matsunaga K, Hirayama I, Tanaka T, Sato M, et al. Hepatic steatosis in chronic hepatitis C is a significant risk factor for developing hepatocellular carcinoma independent of age, sex, obesity, fibrosis stage and response to interferon therapy. *Hepatol Res* 2010;40:870–877.
- [9] Velazquez RF, Rodriguez M, Navascues CA, Linares A, Perez R, Sotorrios NG, et al. Prospective analysis of risk factors for hepatocellular carcinoma in patients with liver cirrhosis. *Hepatology* 2003;37:520–527.
- [10] Lok AS, Seeff LB, Morgan TR, di Bisceglie AM, Sterling RK, Curto TM, et al. Incidence of hepatocellular carcinoma and associated risk factors in hepatitis C-related advanced liver disease. *Gastroenterology* 2009;136:138–148.
- [11] Cardoso AC, Moucari R, Figueiredo-Mendes C, Ripault MP, Giuily N, Castelnau C, et al. Impact of peginterferon and ribavirin therapy on hepatocellular carcinoma: incidence and survival in hepatitis C patients with advanced fibrosis. *J Hepatol* 2010;52:652–657.
- [12] Craxi A, Camma C. Prevention of hepatocellular carcinoma. *Clin Liver Dis* 2005;9:329–346, viii.
- [13] Breiman LJH, Friedman RA, Olshen CJ, Stone CM. Classification and regression trees. Calif: Wadsworth; 1980.
- [14] Garzotto M, Park Y, Mongoue-Tchokote S, Bledsoe J, Peters L, Blank BH, et al. Recursive partitioning for risk stratification in men undergoing repeat prostate biopsies. *Cancer* 2005;104:1911–1917.
- [15] Miyaki K, Takei I, Watanabe K, Nakashima H, Omae K. Novel statistical classification model of type 2 diabetes mellitus patients for tailor-made prevention using data mining algorithm. *J Epidemiol* 2002;12:243–248.
- [16] Averbook BJ, Fu P, Rao JS, Mansour EG. A long-term analysis of 1018 patients with melanoma by classic Cox regression and tree-structured survival analysis at a major referral center: implications on the future of cancer staging. *Surgery* 2002;132:589–602.
- [17] Leiter U, Buettner PG, Eigentler TK, Garbe C. Prognostic factors of thin cutaneous melanoma: an analysis of the central malignant melanoma registry of the german dermatological society. *J Clin Oncol* 2004;22:3660–3667.
- [18] Valera VA, Walter BA, Yokoyama N, Koyama Y, Iiai T, Okamoto H, et al. Prognostic groups in colorectal carcinoma patients based on tumor cell proliferation and classification and regression tree (CART) survival analysis. *Ann Surg Oncol* 2007;14:34–40.
- [19] Zlobec I, Steele R, Nigam N, Compton CC. A predictive model of rectal tumor response to preoperative radiotherapy using classification and regression tree methods. *Clin Cancer Res* 2005;11:5440–5443.
- [20] Baquerizo A, Anselmo D, Shackleton C, Chen TW, Cao C, Weaver M, et al. Phosphorus as an early predictive factor in patients with acute liver failure. *Transplantation* 2003;75:2007–2014.
- [21] Kurosaki M, Matsunaga K, Hirayama I, Tanaka T, Sato M, Yasui Y, et al. A predictive model of response to peginterferon ribavirin in chronic hepatitis C using classification and regression tree analysis. *Hepatol Res* 2010;40:251–260.
- [22] Kurosaki M, Sakamoto N, Iwasaki M, Sakamoto M, Suzuki Y, Hiramatsu N, et al. Sequences in the interferon sensitivity-determining region and core region of hepatitis C virus impact pretreatment prediction of response to PEG-interferon plus ribavirin: data mining analysis. *J Med Virol* 2011;83:445–452.
- [23] Izumi N, Asahina Y, Kurosaki M. Predictors of virological response to a combination therapy with pegylated interferon plus ribavirin including virus and host factors. *Hepat Res Treat* 2010;2010:703602.
- [24] Kurosaki M, Sakamoto N, Iwasaki M, Sakamoto M, Suzuki Y, Hiramatsu N, et al. Pretreatment prediction of response to peginterferon plus ribavirin therapy in genotype 1 chronic hepatitis C using data mining analysis. *J Gastroenterol* 2011;46:401–409.
- [25] Kurosaki M, Tanaka Y, Nishida N, Sakamoto N, Enomoto N, Honda M, et al. Pre-treatment prediction of response to pegylated-interferon plus ribavirin for chronic hepatitis C using genetic polymorphism in IL28B and viral factors. *J Hepatol* 2011;54:439–448.
- [26] Kurosaki M, Hiramatsu N, Sakamoto M, Suzuki Y, Iwasaki M, Tamori A, et al. Age and total ribavirin dose is an independent predictor of relapse among early virological responders to peg-interferon plus ribavirin therapy in chronic hepatitis C revealed by data mining analysis. *Antivir Ther*, in press.
- [27] Hiramatsu N, Kurosaki M, Sakamoto N, Iwasaki M, Sakamoto M, Suzuki Y, et al. Pretreatment prediction of anemia progression by pegylated interferon alpha-2b plus ribavirin combination therapy in chronic hepatitis C infection: decision-tree analysis. *J Gastroenterol* 2011;46:1111–1119.
- [28] LeBlanc M, Crowley J. A review of tree-based prognostic models. *Cancer Treat Res* 1995;75:113–124.
- [29] Lu SN, Wang JH, Liu SL, Hung CH, Chen CH, Tung HD, et al. Thrombocytopenia as a surrogate for cirrhosis and a marker for the identification of patients at high-risk for hepatocellular carcinoma. *Cancer* 2006;107:2212–2222.
- [30] Bruno S, Stroffolini T, Colombo M, Bollani S, Benvegna L, Mazzella G, et al. Sustained virological response to interferon-alpha is associated with improved outcome in HCV-related cirrhosis: a retrospective study. *Hepatology* 2007;45:579–587.
- [31] Bonis PA, Tong MJ, Blatt LM, Conrad A, Griffith JL. A predictive model for the development of hepatocellular carcinoma, liver failure, or liver transplantation for patients presenting to clinic with chronic hepatitis C. *Am J Gastroenterol* 1999;94:1605–1612.

- [32] Asahina Y, Tsuchiya K, Tamaki N, Hirayama I, Tanaka T, Sato M, et al. Effect of aging on risk for hepatocellular carcinoma in chronic hepatitis C virus infection. *Hepatology* 2010;52:518–527.
- [33] Ganne-Carrie N, Chastang C, Chapel F, Munz C, Pateron D, Sibony M, et al. Predictive score for the development of hepatocellular carcinoma and additional value of liver large cell dysplasia in Western patients with cirrhosis. *Hepatology* 1996;23:1112–1118.
- [34] Nishiguchi S, Kuroki T, Nakatani S, Morimoto H, Takeda T, Nakajima S, et al. Randomised trial of effects of interferon-alpha on incidence of hepatocellular carcinoma in chronic active hepatitis C with cirrhosis. *Lancet* 1995;346:1051–1055.
- [35] Shiratori Y, Ito Y, Yokosuka O, Imazeki F, Nakata R, Tanaka N, et al. Antiviral therapy for cirrhotic hepatitis C: association with reduced hepatocellular carcinoma development and improved survival. *Ann Intern Med* 2005;142:105–114.
- [36] Hezode C, Forestier N, Dusheiko G, Ferenci P, Pol S, Goeser T, et al. Telaprevir and peginterferon with or without ribavirin for chronic HCV infection. *N Engl J Med* 2009;360:1839–1850.
- [37] McHutchison JG, Everson GT, Gordon SC, Jacobson IM, Sulkowski M, Kauffman R, et al. Telaprevir with peginterferon and ribavirin for chronic HCV genotype 1 infection. *N Engl J Med* 2009;360:1827–1838.

Original article

Age and total ribavirin dose are independent predictors of relapse after interferon therapy in chronic hepatitis C revealed by data mining analysis

Masayuki Kurosaki¹, Naoki Hiramatsu², Minoru Sakamoto³, Yoshiyuki Suzuki⁴, Manabu Iwasaki⁵, Akihiro Tamori⁶, Kentaro Matsuura⁷, Sei Kakinuma⁸, Fuminaka Sugauchi⁹, Naoya Sakamoto⁸, Mina Nakagawa⁸, Hiroshi Yatsuhashi¹⁰, Namiki Izumi^{1*}

¹Division of Gastroenterology and Hepatology, Musashino Red Cross Hospital, Tokyo, Japan

²Department of Gastroenterology and Hepatology, Osaka University Graduate School of Medicine, Osaka, Japan

³First Department of Internal Medicine, University of Yamanashi, Yamanashi, Japan

⁴Department of Hepatology, Toranomon Hospital, Tokyo, Japan

⁵Department of Computer and Information Science, Seikei University, Tokyo, Japan

⁶Department of Hepatology, Osaka City University Medical School, Osaka, Japan

⁷Department of Gastroenterology and Metabolism, Nagoya City University Graduate School of Medical Sciences, Nagoya, Japan

⁸Department of Gastroenterology and Hepatology, Tokyo Medical and Dental University, Tokyo, Japan

⁹Department of Gastroenterology, Nagoya Kosei-in Medical Welfare Center, Nagoya, Japan

¹⁰Clinical Research Center, National Nagasaki Medical Center, Nagasaki, Japan

*Corresponding author e-mail: nizumi@musashino.jrc.or.jp

Background: This study aimed to define factors associated with relapse among responders to pegylated interferon (PEG-IFN) plus ribavirin (RBV) therapy in chronic hepatitis C.

Methods: A cohort of genotype 1b chronic hepatitis C patients treated with PEG-IFN plus RBV and who had an undetectable HCV RNA by week 12 ($n=951$) were randomly assigned to model derivation ($n=636$) or internal validation ($n=315$) groups. An independent cohort ($n=598$) were used for an external validation. A decision tree model for relapse was explored using data mining analysis.

Results: The data mining analysis defined five subgroups of patients with variable rates of relapse ranging from 13% to 52%. The reproducibility of the model was confirmed by internal and external validations ($r^2=0.79$

and 0.83, respectively). Patients with undetectable HCV RNA at week 4 had the lowest risk of relapse (13%), followed by patients <60 years with undetectable HCV RNA at week 5–12 who received ≥ 3.0 g/kg of body weight of RBV (16%). Older patients with a total RBV dose <3.0 g/kg had the highest risk of relapse (52%). Higher RBV dose beyond 3.0 g/kg was associated with further decrease of relapse rate among patients <60 years (up to 11%) but not among older patients whose relapse rate remained stable around 30%.

Conclusions: Data mining analysis revealed that time to HCV RNA negativity, age and total RBV dose was associated with relapse. To prevent relapse, ≥ 3.0 g/kg of RBV should be administered. Higher dose of RBV may be beneficial in patients <60 years.

Introduction

The currently recommended therapy for chronic hepatitis C is a combination of pegylated interferon (PEG-IFN) plus ribavirin (RBV) [1]. This therapy is effective in 50% of patients with HCV genotype 1b [2,3]. The most reliable predictor of sustained virological response (SVR) is the response during early weeks of therapy. A satisfactory response to therapy in

the early weeks is associated with a high rate of SVR [4–8]. A basic concept of response-guided therapy is to modify the duration of therapy according to the time to HCV RNA negativity. Extended therapy may be given to patients with delayed virological response [9–13]. Modification of duration of therapy or drug dose may also be necessary in patients with early virological

response (EVR), because approximately 20% of these patients experience relapse after the completion of 48 weeks of therapy. Recent reports have revealed that single nucleotide polymorphisms located near the *IL28B* gene are strongly associated with SVR or a null response to PEG-IFN plus RBV therapy [14–16]. However, single nucleotide polymorphisms located near the *IL28B* gene are not associated with relapse after EVR [17]. Identification of risk factors for relapse among patients with virological response may lead to more individualized therapy and improved SVR rate.

Decision tree analysis, a core component of data mining analysis, is a method that explores data to develop predictive models [18]. This method has been originally used in business and recently in medical fields [19–25]. Decision tree analysis was successfully used to build a predictive model of EVR [26] and SVR to PEG-IFN plus RBV combination therapy in chronic hepatitis C [17,27,28]. The results of the analysis are presented as a tree structure, which is easy to understand and use in clinical practice. Patients can be allocated into

subgroups by simply following the flowchart form of the decision tree [29].

In the present study, we used decision tree analysis to identify predictors of relapse among patients who achieved EVR to PEG-IFN plus RBV therapy, and to define a more individualized therapeutic strategy beyond response-guided therapy.

Methods

Patients

This is a multicentre retrospective cohort study involving Musashino Red Cross Hospital, Toranomon Hospital, Tokyo Medical and Dental University, Osaka University, Nagoya City University, Yamanashi University, Osaka City University, and their related hospitals. The inclusion criteria were chronic hepatitis C patients treated with PEG-IFN- α 2b plus RBV, genotype 1b, pretreatment HCV RNA titre >100 KIU/ml as confirmed by quantitative PCR; Cobas Amplicor HCV Monitor version 2.0; Roche Diagnostic Systems, Pleasanton, CA, USA), an undetectable HCV RNA level within week 12 after the start of therapy, no coinfection with HBV or HIV, and no other causes of liver disease. Patients were treated with PEG-IFN- α 2b (1.5 μ g/kg) subcutaneously every week plus a daily weight-adjusted RBV dose (600 mg for patients weighing <60 kg, 800 mg for patients weighing 60–80 kg and 1,000 mg for patients weighing >80 kg). Dose reduction or discontinuation of PEG-IFN and RBV was considered based on the recommendations of the package inserts and the discretion of physicians at each university and hospital. The standard duration of therapy was set at 48 weeks, but extension of duration was allowed and implemented at the discretion of each physician. The duration of therapy was extended beyond 48 weeks in 118 patients (mean duration was 56.3 weeks, ranging from 49 to 72 weeks). Although the exact reason for the prolonged treatment in each case was not available, one reason may be that each physician tried to achieve high adherence of RBV by extending the duration of therapy. Another reason may be the late time point of HCV RNA negativity even within early virological response. Among 118 patients, time to HCV RNA negativity was between 9 to 12 weeks in 56% of patients.

A total of 951 patients fulfilled the study criteria. The baseline characteristics and representative laboratory test results are listed in Table 1. For analysis, patients were randomly assigned to either the model derivation (636 patients) or internal validation (315 patients) groups. There were no significant differences in the clinical backgrounds between these two groups. For external validation of the model, we collaborated with another multicentre study group consisting of 29 medical centres and hospitals belonging to the National

Table 1. Background of study population

Characteristic	Value
Age, years	54.9 (10.8)
Gender	–
Male, n (%)	557 (59)
Female, n (%)	394 (41)
Body mass index, kg/m ²	23.2 (3.3)
Albumin, g/dl	4.1 (1.8)
Creatinine, mg/dl	0.7 (0.2)
AST, IU/l	60.6 (46.2)
ALT, IU/l	80.7 (77.2)
GGT, IU/l	52.0 (60.0)
White blood cell count, cells/ μ l	4,993 (1,363)
Haemoglobin, g/dl	15.9 (52.6)
Platelets, 10 ³ /l	174.4 (6.1)
HCV RNA, KIU/ml	1,655 (1,455)
Fibrosis stage	–
F1–2, n (%)	626 (66)
F3–4, n (%)	98 (10)
NA, n (%)	227 (24)
Time to HCV RNA negativity 4/8/12 weeks	–
4 Weeks, n (%)	233 (24)
8 Weeks, n (%)	386 (41)
12 Weeks, n (%)	332 (35)
Treatment duration, weeks	42 (13)
Total RBV dose, g/kg body weight	3.1 (1.3)
Total PEG-IFN dose, μ g/kg body weight	62.5 (38.6)
Outcome	–
Relapse, n (%)	238 (25)
SVR, n (%)	713 (75)

Total n=951. Data are expressed as mean (sd) unless otherwise indicated.

ALT, alanine aminotransferase; AST, aspartate aminotransferase; GGT, γ -glutamyltransferase; NA, not available; PEG-IFN, pegylated interferon; RBV, ribavirin; SVR: sustained virological response.

Hospital Organization (Japan). A dataset collected from 598 patients who were treated with PEG-IFN- α 2b plus RBV and had undetectable HCV RNA within week 12 were used for external validation. Informed consent was obtained from each patient. The study protocol conformed to the ethical guidelines of the Declaration of Helsinki and was approved by the institutional review committees of all concerned hospitals.

Laboratory tests

Haematological tests, blood chemistry and HCV RNA titre were analysed before therapy and at least once every month during therapy. Rapid virological response (RVR) was defined as an undetectable HCV RNA level at week 4, and complete early virological response (cEVR) was defined as an undetectable HCV RNA level at week 5 through week 12 after the start of therapy. SVR was defined as an undetectable HCV RNA level 24 weeks after the completion of therapy. Detection of HCV RNA level was based on qualitative PCR with a lower detection limit of 50 IU/ml (Amplicor; Roche Diagnostic Systems). A database of pretreatment variables included haematological tests (haemoglobin level, white blood cell count and platelet count), blood chemistry tests (serum levels of creatinine, albumin, aspartate aminotransferase, alanine aminotransferase, γ -glutamyltransferase, total cholesterol, triglycerides and HCV RNA titre), stage of histological fibrosis and patient characteristics (age, sex and body mass index). Post-treatment variables included time to HCV RNA negativity, calculated total RBV dose (g/kg of body weight), and calculated total PEG-IFN dose (μ g/kg of body weight).

Statistical analysis

The Student's *t*-test was used for the univariable comparison of quantitative variables and Fisher's exact test was used for the comparison of qualitative variables. Logistic regression models with backward selection procedures were used for multivariable analysis of factors associated with relapse. IBM SPSS software version 18.0 (SPSS Inc., Chicago, IL, USA) was used for analysis. For the decision tree analysis [30], the data mining software IBM SPSS Modeler 14 (SPSS Inc.) was used, as reported previously [17,26–28]. The decision tree analysis, the core component of the data mining, belongs to a family of non-parametric regression methods based on binary recursive partitioning of data. In this analysis, the software automatically explored the database to determine optimal split variables to build a decision tree structure. A statistical search algorithm evaluate the model derivation group to determine the optimum variables and cutoff values and to yield the most significant division of patients into two subgroups that were as homogeneous as possible for the probability

of relapse. Once patients were divided into 2 subgroups, the analysis was automatically repeated on each subgroup in the same way until either no additional significant variable was detected or the number of patients was <20. Finally all patients were classified into particular subgroups that are homogeneous with respect to the probabilities of relapse.

Results

The decision tree model for the prediction of relapse

The overall rate of relapse was 26% in the model derivation group. The decision tree analysis selected three variables that are associated with relapse: time to HCV RNA negativity, age and total RBV dose (Figure 1). Time to HCV RNA negativity was selected as the best predictor of relapse. The rate of relapse was 13% for patients with RVR compared to 30% for patients with cEVR. Among patients with cEVR, age was selected as the variable of second split. Patients <60 years had a lower probability of relapse (22%) compared with those \geq 60 years (41%). The total RBV dose was selected as the third variable of split with an optimal cutoff of 3.0 g/kg of body weight. The rate of relapse was lower in patients who received \geq 3.0 g/kg of body weight of RBV compared to patients who received <3.0 g/kg of body weight (among patients <60 years rates were 16% versus 32% and among patients \geq 60 years rates were 26% versus 52%, respectively).

According to this decision tree, the patients were divided into five groups with different rates of relapse ranging from 13% to 52%. Patients with RVR had the lowest risk of relapse. Among patients with cEVR, patients <60 years who received \geq 3.0 g/kg of body weight of RBV also had a low risk of relapse (16%). By contrast, patients who received <3.0 g/kg of body weight of RBV had higher than the average risk of relapse, especially in patients \geq 60 years (52%).

Validation of the decision tree model

The decision tree model was validated using an internal validation group that was not included in the model derivation. The rates of relapse for each subgroup of patients were correlated closely between the model derivation and the internal validation group ($r^2=0.79$; Figure 2A). When validated using an external validation group, the rates of relapse for each subgroup of patients were again correlated closely between the model derivation and the external validation group. ($r^2=0.83$; Figure 2B).

Multivariable logistic regression analysis for factors associated with relapse

Univariable and multivariable analysis was performed using the combined population of model derivation and internal validation group. Univariable analysis found

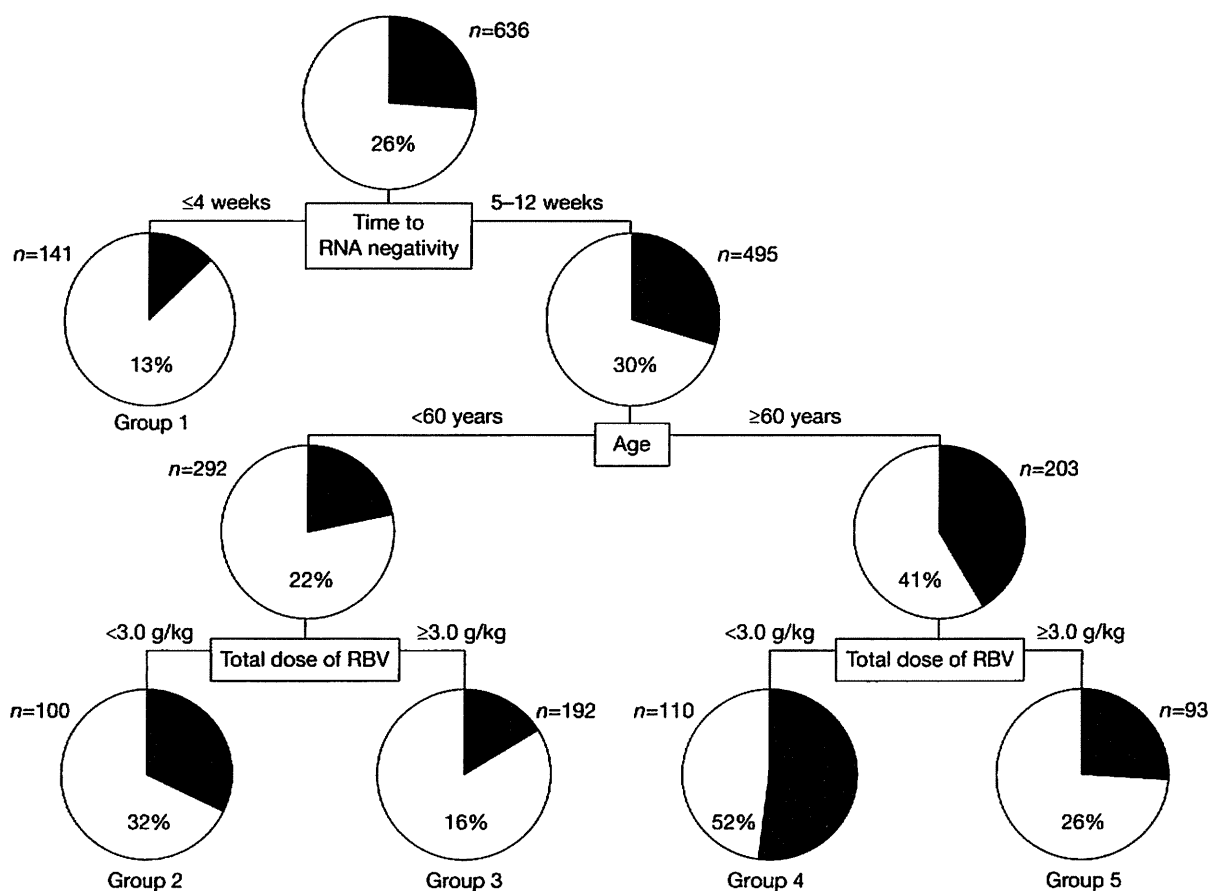
that age, sex, serum levels of creatinine, haemoglobin, platelet count, HCV RNA titre, time to HCV RNA negativity, total PEG-IFN dose and total RBV dose were associated with relapse. Duration of therapy was not associated with reduction in relapse rate. Multivariable analysis including these factors showed that age, total RBV dose, serum level of creatinine, and time to HCV RNA negativity were independent predictors of relapse (Table 2). Creatinine was not selected as a splitting variable in data mining analysis probably due to the limitation to stop the analysis when the number of patients was <20. Using the combined population of model derivation and internal validation group, patients in each subgroup of decision tree model were further stratified by creatinine levels and the effect of creatinine level on relapse was analysed. Among patients with RVR, the rate of relapse did not differ

between patients with creatinine levels of <0.7 g/dl and ≥ 0.7 g/dl and were 12% and 12%, respectively. Among patients with cEVR, the rate of relapse was higher in patients with creatinine levels of <0.7 g/dl compared to those with creatinine levels of ≥ 0.7 g/dl and were 39% versus 23%, respectively, for patients <60 years who received <3.0 g/kg of body weight of RBV, 19% versus 14% for patients <60 years who received ≥ 3.0 g/kg of body weight of RBV, 58% versus 41% for patients ≥ 60 years who received <3.0 g/kg of body weight of RBV, and 42% versus 26% for patients ≥ 60 years who received ≥ 3.0 g/kg of body weight of RBV.

Effect of age and total RBV dose on relapse among patients with cEVR

The effect of total RBV dose on relapse was analysed among patients with cEVR in a combined group of

Figure 1. The decision-tree model of relapse among patients with rapid virological response or complete early virological response

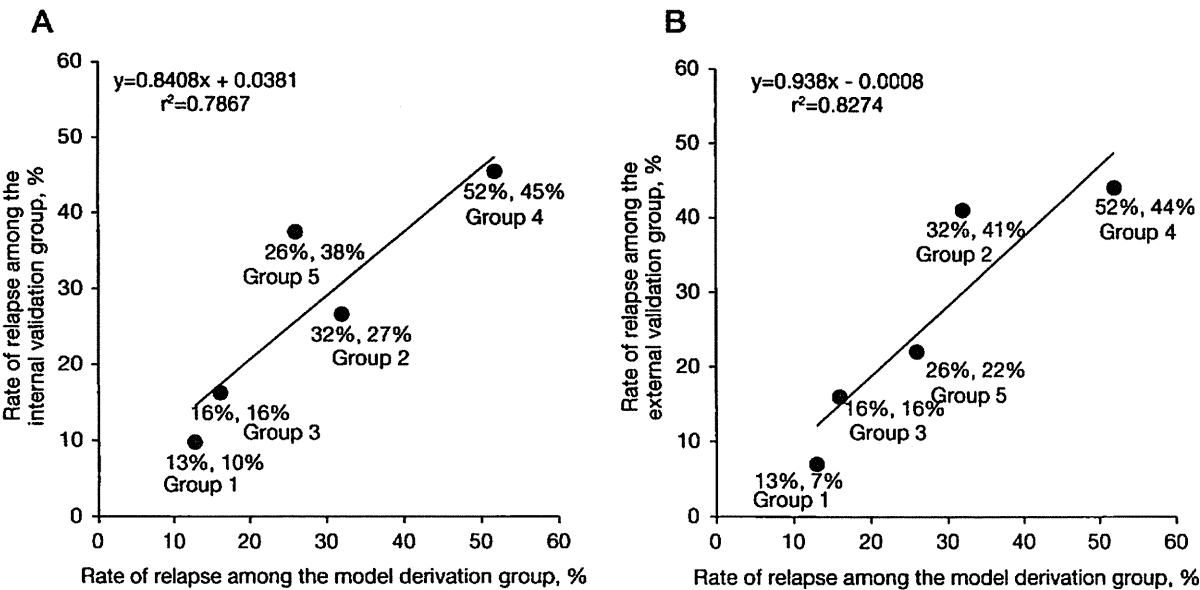


Boxes indicate the factors used for splitting and the cutoff values for the split. Pie charts indicate the rate of relapse for each group of patients after splitting. Terminal groups of patients discriminated by the analysis are numbered from 1 to 5. The rate of relapse was higher than average (>26%) in subgroups 2 and 4, where total ribavirin (RBV) dose was <3 g/kg of body weight.

model derivation and internal validation (*n*=718). The relapse rate decreased with an increase in RBV dose (Figure 3A). When patients were stratified into two groups according to age, the relapse rate decreased with an increase in RBV dose in patients <60 years. The relapse rate was lowest (11%) in patients <60 years who received ≥4.0 g/kg of body weight of RBV. By contrast, among patients ≥60 years, the relapse rate decreased with an increase in RBV dose up to 3.0 g/kg of body weight, but remained relatively stable despite a further increase in the RBV dose beyond 3.0 g/kg of body weight. The rate of relapse was 31% to 33% in patients who received ≥3.0 g/kg of body weight.

Patients ≥60 years had higher relapse rate compared with patients <60 years after stratification by RBV dose (*P*=0.044 for RBV <2.5 g/kg, *P*=0.009 for RBV 2.5–2.9 g/kg, *P*=0.150 for RBV 3.0–3.4 g/kg, *P*=0.036 for RBV 3.5–3.9 g/kg and *P*=0.006 for RBV ≥4.0 g/kg). To exclude the effect of the duration of therapy, patients who received 42–54 weeks of therapy were selected (*n*=544). Again, the relapse rate decreased with an increase in RBV dose in patients <60 years but remained stable despite a further increase in the RBV dose beyond 3.0 g/kg of body weight in patients ≥60 years (Figure 3B); in addition, patients ≥60 years had a higher relapse rate compared with younger patients after stratification by

Figure 2. Internal and external validation of the decision-tree model: subgroup-stratified comparison of the rate of relapse between the model derivation and validation groups



Each patient in the internal and external validation population was allocated to groups 1 to 5 following the flowchart of the decision tree. The rates of relapse were then calculated for each group and a graph was plotted. The rate of relapse in the (A) internal and (B) external validation groups are shown. The rates of relapse are shown as percentages below data points: the value on the left is from the model derivation group and on the right is from the validation group. The rates of relapse in each group of patients correlated closely between the model derivation group and the validation group (correlation coefficient: *r*²=0.79 and 0.83, respectively).

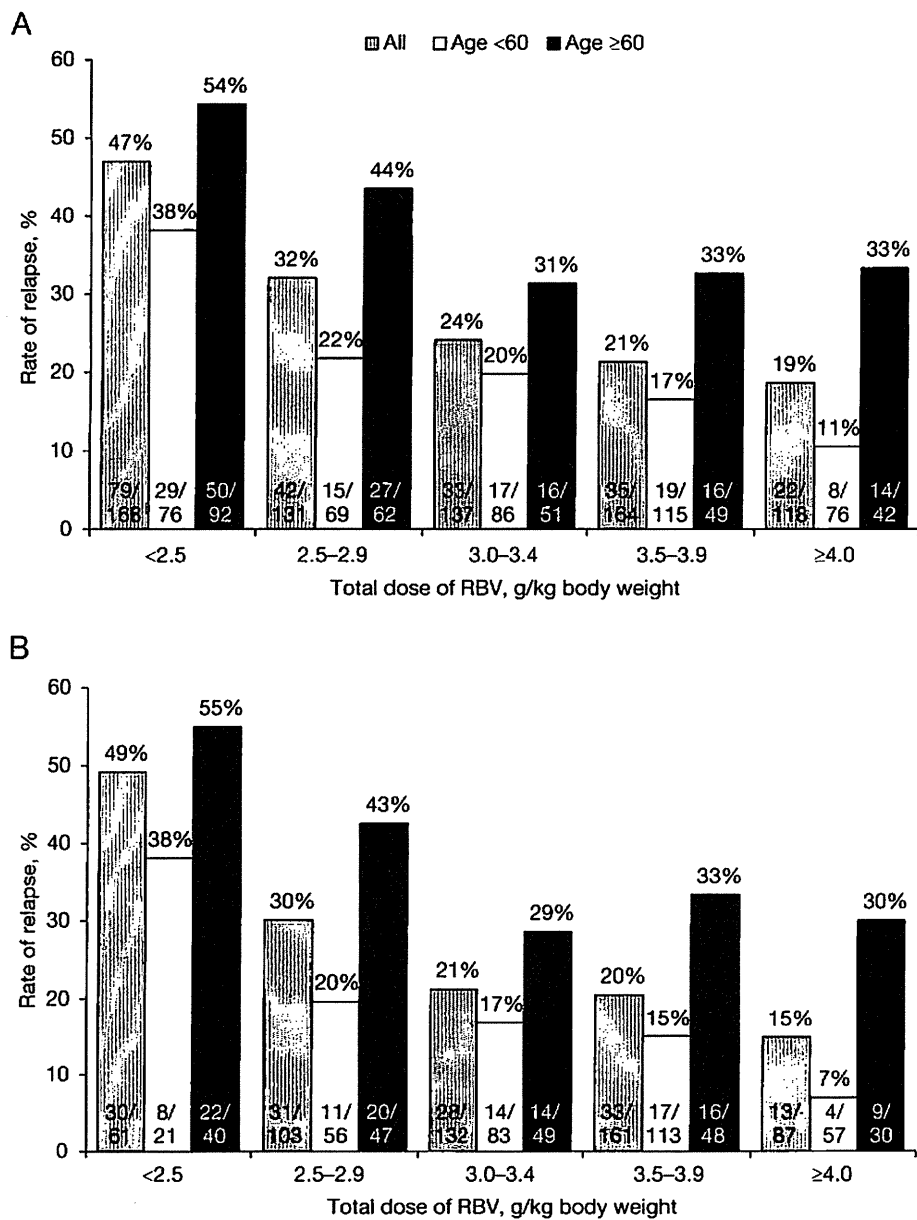
Table 2. Multivariable analysis of factors associated with relapse among patients with RVR/cEVR			
Factor	OR	95% CI	P-value
No-RVR	4.07	2.57–6.43	<0.0001
Total RBV dose <3.0 g/kg body weight	2.19	1.58–3.03	<0.0001
Creatinine <0.7 g/dl	1.67	1.22–2.29	0.001
Age ≥60 years	2.37	1.73–3.24	<0.0001

cEVR, complete early virological response (HCV-RNA-positive at week 4, but negative at week 12); RBV, ribavirin; RVR, rapid virological response (HCV-RNA-negative at week 4).

RBV dose ($P=0.283$ for RBV <2.5 g/kg, $P=0.017$ for RBV $2.5-2.9$ g/kg, $P=0.127$ for RBV $3.0-3.4$ g/kg, $P=0.011$ for RBV $3.5-3.9$ g/kg and $P=0.009$ for RBV ≥ 4.0 g/kg). Total dose of RBV was associated with relapse independently of PEG-IFN dose. The cutoff value of $58 \mu\text{g/kg}$ of PEG-IFN was selected, which corresponds to the 80% of $1.5 \mu\text{g/kg}$ dose for 48 weeks. In patients who received $<58 \mu\text{g/kg}$ of body weight of PEG-IFN,

the rate of relapse for patients who received ≥ 3.0 g/kg or <3.0 g/kg of body weight of RBV was 24% and 42%, respectively. In patients who received $\geq 58 \mu\text{g/kg}$ of body weight of PEG-IFN, the rate of relapse for patients who received ≥ 3.0 g/kg or <3.0 g/kg of body weight of RBV was 21% and 38%, respectively. The data mining analysis procedure did not select further split variables among RVR patients. However,

Figure 3. Correlation between the rate of relapse and total RBV dose among patients with cEVR after stratification by age



Association between the total ribavirin (RBV) dose and the rate of relapse among patients with complete early virological response (cEVR) is shown. (A) Higher dose of RBV was associated with reduced rate of relapse. (B) These associations were also confirmed in selected patients who received 42-54 weeks of therapy.

when analysed separately, the rate of relapse was also associated with age and total RBV dose among patients with RVR. The rate of relapse for patients who received ≥ 3.0 g/kg or < 3.0 g/kg of body weight of RBV was 5% and 14%, respectively. The rate of relapse for patients < 60 and ≥ 60 years was 9% and 18%, respectively. Collectively, the rate of relapse for patients < 60 years who received ≥ 3.0 g/kg or < 3.0 g/kg of body weight of RBV was 2% and 11%, respectively, whereas the rate of relapse for patients ≥ 60 years who received ≥ 3.0 g/kg or < 3.0 g/kg of body weight of RBV was 12% and 20%, respectively.

Discussion

The result of the present study shows that older age and insufficient dose of RBV are significant and independent risk factors for relapse among patients with cEVR to PEG-IFN plus RBV. Older patients (≥ 60 years) who received a total RBV dose < 3.0 g/kg of body weight had the highest risk of relapse (52%), whereas younger patients who received a total RBV dose ≥ 3.0 g/kg of body weight had the lowest risk of relapse (16%). The rate of relapse decreased depending on the total RBV dose in younger patients, but remained stable in older patients despite a further increase in the RBV dose beyond 3.0 g/kg of body weight. These findings imply that the target dose of total RBV can be set at 3.0 g/kg of body weight in patients who achieved cEVR, and further increase in RBV dose up to 4.0 g/kg of body weight or greater may be recommended in patients < 60 years.

The associations between the drug adherence and virological response had been reported with inconsistent results. In an earlier study, patients who received $> 80\%$ of the planned dose of PEG-IFN plus RBV for $> 80\%$ of the planned duration of therapy had a higher rate of SVR compared to those who received a lesser dose (51% versus 34%) [31]. Consistent results were obtained in a study reporting that patients who received $> 80\%$ of the planned dose of PEG-IFN and RBV within the first 12 weeks of therapy had a higher rate of EVR compared with those who received a lesser dose of both drugs (80% versus 33%) [4]. By contrast, a large-scale multicentre study showed that reducing the PEG-IFN dose during the first 20 weeks reduced SVR; however, reducing RBV did not affect SVR as long as RBV was not prematurely discontinued [32]. The reason for these inconsistencies is unclear. One reason may be the differences in the backgrounds of patients enrolled in the study, and hence the last study was limited to patients with advanced fibrosis and prior non-responders to PEG-IFN therapy. Because the probability of SVR is affected by virological response and relapse after response, the effect of drug dosing should be analysed separately with respect to these two factors.

In the present study, we focused on factors predictive of relapse after early virological response. According to the decision tree model, relapse was less likely in patients with RVR compared with cEVR. Among patients with cEVR, older patients (≥ 60 years) had a higher risk of relapse compared to younger patients (41% versus 22%). In addition, our results emphasized the effect of RBV dose for the prevention of relapse. In our study, a total RBV dose of ≥ 3.0 g/kg of body weight was repeatedly associated with a suppressed rate of relapse in the model derivation and validation groups. The rate of relapse in patients < 60 years who received an RBV dose of < 3.0 versus ≥ 3.0 g/kg of body weight in the model derivation, internal validation and external validation groups were 32% versus 16%, 27% versus 16%, and 41% versus 16%, respectively. The rate of relapse in patients ≥ 60 years who received an RBV dose of < 3.0 versus ≥ 3.0 g/kg of body weight in the model derivation, internal validation and external validation groups were 52% versus 26%, 45% versus 38%, and 44% versus 22%, respectively. It has been reported that the rate of relapse is suppressed in 48 weeks of IFN plus RBV combination therapy compared to IFN monotherapy, indicating that RBV contributes to the increase in SVR by reducing relapse [2,3]. Another study, focused on the associations between the drug dose reduction and relapse in patients with virological response, found that maintaining RBV dose ≥ 12 mg/kg/day during 48 weeks of treatment, which can be translated into a total dose of 4.0 g/kg of body weight, suppressed relapse [33]. Results of the present study are in accordance with this report.

The importance of drug dosing on reduction in relapse is also supported by the findings that extending therapy from 48 to 72 weeks in patients with delayed virological response improved SVR rates by reducing relapse [9–13]. Apart from these clinical studies, in the real world of clinical practice, duration of therapy is extended – even in patients with cEVR – at the physician's discretion. The relationship between duration of therapy or RBV dose, and relapse among patients with cEVR and treated with various lengths of therapy has not been examined. In the combined group of our study, extending the duration of therapy was not associated with a reduction in relapse rate. Rather, the rate of relapse decreased depending on the total RBV dose. These findings suggest that acquiring a sufficient total RBV dose, either within 48 weeks or by extending the duration of therapy, is essential to prevent relapse among patients with cEVR. The limitation of the present study was that the mean duration of therapy was only 56.3 weeks in patients whose duration of therapy was extended beyond 48 weeks. It is probable that extended duration of therapy was not long enough for the prevention of relapse. Further studies with

longer durations of therapy are necessary to confirm the effect of extended duration of therapy on reduction of relapse among patients with cEVR.

Previous reports did not consider the effects of age in setting the optimal dose of RBV. In the present study, the relapse rate decreased with an increase in RBV dose from <2.5 to 3.0–3.5 g/kg of body weight, but remained relatively stable despite a further increase in the RBV dose in older patients. Thus, a total RBV dose ≥ 3.0 g/kg of body weight should be the target dose for patients ≥ 60 years with cEVR. By contrast, ≥ 3.0 g/kg of body weight of RBV was associated with lower risk of relapse in patients <60 with cEVR (16% versus 32%), and a further increase in RBV dose led to a more profound reduction in relapse rates, as low as 11% in patients who received ≥ 4.0 g/kg of body weight. Thus, a total dose of ≥ 4.0 g/kg of body weight or even greater should be the target dose in patients <60 years.

In the near future, more potent therapies, such as direct antiviral agents [34,35], may become available. These drugs require RBV and PEG-IFN in combination. However, not all patients may be able to tolerate this triple combination therapy due to adverse drug reactions, such as severe anaemia or skin eruption. In particular, it may be difficult to administer a full dose of triple drugs to older patients. Thus, personalizing the PEG-IFN and RBV combination therapy based on this model may be beneficial to patients who were intolerant to triple combination therapy.

In the present study creatinine was an independent predictor of relapse by multivariable logistic regression analysis. However creatinine was not selected as a splitting variable in decision tree, which may be due to the unique property of data mining analysis. In data mining analysis, limitation is imposed to stop the analysis when the number of patients is <20. This limitation is used to avoid dividing patients into too small subgroups which lead to the generation of rules that only apply to the model derivation population and not reproduced when applied to other populations. This phenomenon is called the over-fitting of the model. Due to this limitation, the variables selected in the data mining analysis are not necessarily identical to the variables that are significant by ordinary multivariable analysis. In a separate analysis, lower level of creatinine was associated with higher rate of relapse in each subgroup of patients with cEVR. The reason for this association is not clear, but lower creatinine level may be related to more efficient clearance of RBV leading to lower serum level of RBV. Further research is needed to confirm this speculation.

A potential limitation of the present study is that data mining analysis has an intrinsic risk of showing relationships that fit to the original dataset, but

are not reproducible in different groups. Although internal and external validations showed that our model had high reproducibility, we recognized that further validation on a larger external validation cohort, especially in groups other than Japanese, may be necessary to further verify the reliability of our model.

In conclusion, we built a decision tree model for the prediction of relapse among patients with EVR to PEG-IFN plus RBV. The result of the present study shows that older age and insufficient dose of RBV are significant and independent risk factors for relapse. The target dose of total RBV can be set at 3.0 g/kg of body weight in patients who achieved cEVR. A further increase in RBV dose up to 4.0 g/kg of body weight may be warranted in patients <60 years.

Acknowledgements

This study was supported by a Grant-in-Aid from the Ministry of Health, Labor and Welfare, Japan (H20-kanen-006).

Disclosure statement

The authors declare no competing interests.

References

1. Strader DB, Wright T, Thomas DL, Seeff LB. Diagnosis, management, and treatment of hepatitis C. *Hepatology* 2004; 39:1147–1171.
2. Fried MW, Shiffman ML, Reddy KR, *et al.* Peginterferon alpha-2a plus ribavirin for chronic hepatitis C virus infection. *N Engl J Med* 2002; 347:975–982.
3. Manns MP, McHutchison JG, Gordon SC, *et al.* Peginterferon alpha-2b plus ribavirin compared with interferon alpha-2b plus ribavirin for initial treatment of chronic hepatitis C: a randomised trial. *Lancet* 2001; 358:958–965.
4. Davis GL, Wong JB, McHutchison JG, Manns MP, Harvey J, Albrecht J. Early virologic response to treatment with peginterferon alpha-2b plus ribavirin in patients with chronic hepatitis C. *Hepatology* 2003; 38:645–652.
5. Lee SS, Ferenci P. Optimizing outcomes in patients with hepatitis C virus genotype 1 or 4. *Antivir Ther* 2008; 13 Suppl 1:9–16.
6. Namiki I, Nishiguchi S, Hino K, *et al.* Management of hepatitis C: report of the consensus meeting at the 45th annual meeting of the Japan Society of Hepatology (2009). *Hepatol Res* 2010; 40:347–368.
7. Jensen DM, Morgan TR, Marcellin P, *et al.* Early identification of HCV genotype 1 patients responding to 24 weeks peginterferon alpha-2a (40 kD)/ribavirin therapy. *Hepatology* 2006; 43:954–960.
8. Yu ML, Dai CY, Huang JF, *et al.* Rapid virological response and treatment duration for chronic hepatitis C genotype 1 patients: a randomized trial. *Hepatology* 2008; 47:1884–1893.
9. Berg T, von Wagner M, Nasser S, *et al.* Extended treatment duration for hepatitis C virus type 1: comparing 48 versus 72 weeks of peginterferon-alpha-2a plus ribavirin. *Gastroenterology* 2006; 130:1086–1097.

10. Sánchez-Tapias JM, Diago M, Escartin P, *et al.* Peginterferon-alfa2a plus ribavirin for 48 versus 72 weeks in patients with detectable hepatitis C virus RNA at week 4 of treatment. *Gastroenterology* 2006; 131:451–460.
11. Ferenci P, Laferl H, Scherzer TM, *et al.* Peginterferon alfa-2a/ribavirin for 48 or 72 weeks in hepatitis C genotypes 1 and 4 patients with slow virologic response. *Gastroenterology* 2010; 138:503–512.e1.
12. Buti M, Lurie Y, Zakharova NG, *et al.* Randomized trial of peginterferon alfa-2b and ribavirin for 48 or 72 weeks in patients with hepatitis C virus genotype 1 and slow virologic response. *Hepatology* 2010; 52:1201–1207.
13. Pearlman BL, Ehleben C, Saifec S. Treatment extension to 72 weeks of peginterferon and ribavirin in hepatitis c genotype 1-infected slow responders. *Hepatology* 2007; 46:1688–1694.
14. Tanaka Y, Nishida N, Sugiyama M, *et al.* Genome-wide association of IL28B with response to pegylated interferon-alpha and ribavirin therapy for chronic hepatitis C. *Nat Genet* 2009; 41:1105–1109.
15. Suppiah V, Moldovan M, Ahlenstiel G, *et al.* IL28B is associated with response to chronic hepatitis C interferon-alpha and ribavirin therapy. *Nat Genet* 2009; 41:1100–1104.
16. Ge D, Fellay J, Thompson AJ, *et al.* Genetic variation in IL28B predicts hepatitis C treatment-induced viral clearance. *Nature* 2009; 461:399–401.
17. Kurosaki M, Tanaka Y, Nishida N, *et al.* Pre-treatment prediction of response to pegylated-interferon plus ribavirin for chronic hepatitis C using genetic polymorphism in IL28B and viral factors. *J Hepatol* 2011; 54:439–448.
18. Breiman LJH, Friedman RA, Olshen CJ, Stone CM. *Classification and regression trees*. 1980. Belmont, CA: Wadsworth.
19. Garzotto M, Park Y, Mongoue-Tchokote S, *et al.* Recursive partitioning for risk stratification in men undergoing repeat prostate biopsies. *Cancer* 2005; 104:1911–1917.
20. Miyaki K, Takei I, Watanabe K, Nakashima H, Omac K. Novel statistical classification model of type 2 diabetes mellitus patients for tailor-made prevention using data mining algorithm. *J Epidemiol* 2002; 12:243–248.
21. Averbook BJ, Fu P, Rao JS, Mansour EG. A long-term analysis of 1018 patients with melanoma by classic Cox regression and tree-structured survival analysis at a major referral center: Implications on the future of cancer staging. *Surgery* 2002; 132:589–604.
22. Leiter U, Buettner PG, Eigentler TK, Garbe C. Prognostic factors of thin cutaneous melanoma: an analysis of the central malignant melanoma registry of the German dermatological society. *J Clin Oncol* 2004; 22:3660–3667.
23. Valera VA, Walter BA, Yokoyama N, *et al.* Prognostic groups in colorectal carcinoma patients based on tumor cell proliferation and classification and regression tree (CART) survival analysis. *Ann Surg Oncol* 2007; 14:34–40.
24. Zlobec I, Steele R, Nigam N, Compton CC. A predictive model of rectal tumor response to preoperative radiotherapy using classification and regression tree methods. *Clin Cancer Res* 2005; 11:5440–5443.
25. Baquerizo A, Anselmo D, Shackleton C, *et al.* Phosphorus as an early predictive factor in patients with acute liver failure. *Transplantation* 2003; 75:2007–2014.
26. Kurosaki M, Matsunaga K, Hirayama I, *et al.* A predictive model of response to peginterferon ribavirin in chronic hepatitis C using classification and regression tree analysis. *Hepatol Res* 2010; 40:251–260.
27. Kurosaki M, Sakamoto N, Iwasaki M, *et al.* Pretreatment prediction of response to peginterferon plus ribavirin therapy in genotype 1 chronic hepatitis C using data mining analysis. *J Gastroenterol* 2011; 46:401–409.
28. Kurosaki M, Sakamoto N, Iwasaki M, *et al.* Sequences in the interferon sensitivity determining region and core region of hepatitis C virus impact pretreatment prediction of response to peg-interferon plus ribavirin: data mining analysis. *J Med Virol* 2011; 83:445–452.
29. LeBlanc M, Crowley J. A review of tree-based prognostic models. *Cancer Treat Res* 1995; 75:113–124.
30. Segal MR, Bloch DA. A comparison of estimated proportional hazards models and regression trees. *Stat Med* 1989; 8:539–550.
31. McHutchison JG, Manns M, Patel K, *et al.* Adherence to combination therapy enhances sustained response in genotype-1-infected patients with chronic hepatitis C. *Gastroenterology* 2002; 123:1061–1069.
32. Shiffman ML, Ghany MG, Morgan TR, *et al.* Impact of reducing peginterferon alfa-2a and ribavirin dose during retreatment in patients with chronic hepatitis C. *Gastroenterology* 2007; 132:103–112.
33. Hiramatsu N, Oze T, Yakushiji T, *et al.* Ribavirin dose reduction raises relapse rate dose-dependently in genotype 1 patients with hepatitis C responding to pegylated interferon alpha-2b plus ribavirin. *J Viral Hepat* 2009; 16:586–594.
34. Hézode C, Forestier N, Dusheiko G, *et al.* Telaprevir and peginterferon with or without ribavirin for chronic HCV infection. *N Engl J Med* 2009; 360:1839–1850.
35. McHutchison JG, Everson GT, Gordon SC, *et al.* Telaprevir with peginterferon and ribavirin for chronic HCV genotype 1 infection. *N Engl J Med* 2009; 360:1827–1838.

Accepted 18 April 2011; published online 21 October 2011

Review Article

Prediction and prevention of intrahepatic recurrence of hepatocellular carcinoma

Namiki Izumi

Department of Gastroenterology and Hepatology, Musashino Red-Cross Hospital, Musashinoshi, Tokyo, Japan

Hepatocellular carcinoma (HCC) has characteristic features of the coexistence of two life-threatening conditions, cancer and cirrhosis, which makes prognostic assessment difficult. In addition, the high rate of intrahepatic recurrence is a key feature that correlates with poor prognosis and its prevention is an issue for urgent investigation. Gene expression in the tumor and adjacent liver tissue for the prediction of intrahepatic recurrence of HCC has been extensively investigated. Among them, the expression of progenitor cell feature markers in the cancer cells such as epidermal cell adhesion molecule (EpCAM), cytokeratin 19 (CK19) and CD 133 have been shown to be associated with intrahepatic recurrence of HCC. Gene expression patterns from adjacent tissues were shown to predict early and overall recurrence in patients with HCC. Insulin resistance should be included in the analysis for

the prevention of recurrence. To suppress or eradicate the replication of hepatitis B and C virus must be the most important issue for prevention. Supplementation by branched chain amino acid-enrichment and administration of vitamin K, acyclic retinoid and chemotherapeutic agents have been examined. There is an urgent need to develop a predictive tool and an effective treatment for prevention. It would be extremely valuable to find a useful biomarker for prediction and to develop new molecular targeting agents for the prevention of HCC recurrence in the near future.

Key words: acyclic retinoid, CD 133, epidermal cell adhesion molecule, hepatocellular carcinoma, CK19, progenitor cell markers, vitamin K2

INTRODUCTION

HEPATOCELLULAR CARCINOMA IS the fourth leading cause of death from malignant neoplastic disease in Japan, and improvement of the prognosis is an important issue to be solved.¹ Because HCC develops from hepatitis B or C virus infection in more than 80% of patients, unlike most solid tumors, the coexistence of two life-threatening conditions, cancer and cirrhosis, makes prognostic assessments difficult. In addition, the high rate of intrahepatic recurrence is a key feature that correlates with poor prognosis, and its prevention is an issue for urgent investigation. The long-term prognosis after surgical resection of HCC remains unsatisfactory

compared with other common human cancers because of the high rate of recurrence and lack of effective adjuvant therapy. Poon reported from an extensive analysis of the published reports that the 5-year recurrence rate is more than 70% and this is the main cause of long-term death rather than the underlying cirrhosis.² Gene signatures from the tumor and adjacent tissue have been shown to be useful for predicting not only recurrence but also outcome.³

Investigation of gene expression in the tumor and adjacent liver tissue is very important for the prediction of intrahepatic recurrence of HCC and its prevention. Following such investigations, there is an urgent need to develop an effective treatment for the prevention of HCC recurrence. To suppress or eradicate the replication of hepatitis B and C virus must be the most important issue for prevention. This will be effective for the prevention of HCC recurrence and improving liver function, when HCC has developed on a background of liver cirrhosis. It would be extremely valuable to find a useful biomarker for prediction and to develop new molecular targeting agents for the prevention of HCC recurrence in the near future.

Correspondence: Dr Namiki Izumi, Department of Gastroenterology and Hepatology, Musashino Red Cross Hospital, 1-26-1 Kyonanchō, Musashino-shi, Tokyo 180-8610, Japan. Email: nizumi@musashino.jrc.or.jp

Financial Support: This study was supported by grants from the Japanese Ministry of Welfare, Health, and Labour.

Potential conflict of interest: The author has nothing to declare.

Received 8 September 2011; revision 3 October 2011; accepted 3 October 2011.

FACTORS ASSOCIATED WITH INTRAHEPATIC HCC RECURRENCE, INCLUDING THE TUMOR, SURROUNDING LIVER AND SYSTEMIC COMPLICATIONS

Factors in the tumor associated with HCC recurrence

THE RELATIONSHIP BETWEEN the gene expression signature of HCC and the gross tumor morphology may be investigated using surgically resected liver tissue and the confluent multinodular (CM) type has been shown to be associated with poor prognosis in terms of overall survival and recurrence-free survival.⁴ The molecules associated with intrahepatic recurrence of HCC have been investigated in the tumor itself. In particular, a stem-cell epidermal cell adhesion molecule (EpCAM) was shown to be expressed in CM-type HCC, and this was confirmed by immunohistochemical studies of HCC cancer cells of the CM-type by Murakata *et al.* In their analysis, EpCAM was shown to be predictive of poor prognosis in terms of overall and recurrence-free survival.³ EpCAM is one of the markers of HCC cells derived from cancer stem cells (CSC), which have been shown to have a great capacity for colony formation rate.⁵ Recently, EpCAM has been shown to correlate with HCC growth and a new avenue for cancer eradication by targeting Wnt/beta-catenin signaling components such as EpCAM was suggested by Yamashita *et al.*⁶

Komuta *et al.* reported that cholangiolocellular carcinoma may be of progenitor cell origin, and that some HCCs also are derived from hepatic progenitor cells, because immunohistological staining of keratin 19 is positive in the cytoplasm.⁷ Intermediate hepatobiliary cells that are defined by cytokeratin (CK) 7 and 19 positive immunohistological staining, have been seen in the liver tissue of hepatitis C virus-related cirrhosis and are related independently to HCC occurrence.⁸ CK 19 expression was reported to be a useful predictive marker for detecting more aggressive HCCs after curative resection, because tumors with CK 19 expression have a poorer prognosis^{9,10} and higher rates of recurrence after curative resection.^{11,12} Recently, Tsuchiya *et al.* examined CK 19 expression in tumor biopsy tissue from nodules that were treated completely by radiofrequency ablation (RFA), and positive staining of cytoplasmic CK 19 was related to high recurrence of HCC after curative RFA¹³ (Fig. 1).

Sasaki *et al.* reported that cytoplasmic and membranous expression of CD 133 was observed in 22% of HCC patients and cytoplasmic expression of CD 133 was identified as a significant risk factor for the overall

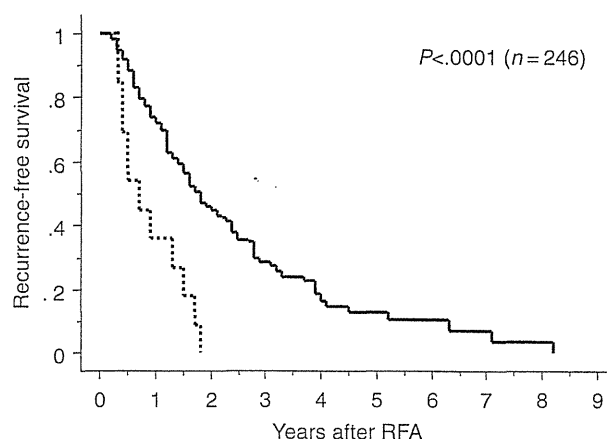


Figure 1 Comparison of recurrence-free survival between K19 positive and negative cases. Recurrence-free survival was lower in patients with positive staining of the biopsied tumor tissue before radiofrequency ablation than in those without K19 staining, as reported by Tsuchiya *et al.*¹² —, CK19 < 1%, $n = 233$; ···, CK19 $\geq 1\%$, $n = 13$.

survival of the patients.¹⁴ Because CD 133 is a cancer stem-cell marker, other markers of progenitor cells should be investigated as biomarkers of early recurrence and poor prognosis in patients with HCC. Investigation of biomarkers associated with early recurrence of HCC should enable the development of clinically useful molecular targeting agents.

Apart from progenitor cell feature markers, the hepatocyte-specific, organic anion transporter peptides (OATP) 1B1 and 1B3 have been shown to be negatively correlated with HCC-related death after recurrence.¹⁵

HCC recurrence and background liver disease

Liver dysfunction, evaluated by determining serum albumin levels and the branched chain amino-acid to tyrosine ratio (BTR), have been shown by Nakamura *et al.* to be associated with recurrence of HCC after curative resection.¹⁶ Gene expression was investigated in fixed tissue from the liver surrounding HCC following surgical resection and a reproducible gene expression signature that correlated with survival was established in patients with HCC.¹⁷ The same group reported gene expression patterns that predict recurrence of HCC from the tumor itself and adjacent tissues and these gene signatures were shown to predict early and overall recurrence in patients with HCC.¹⁸ Researchers from Germany reported a prognostic model for HCC recurrence, based on gene expression patterns in tumor and

adjacent tissues.¹⁹ They reported that these signatures were useful to predict early and overall recurrence in patients with HCC and that they are helpful for predicting HCC recurrence along with complementary findings from clinical and pathological analysis.

The expression of vascular endothelial growth factor (VEGF) was examined in tumor and non-tumor liver tissue after surgical resection and the tumor/non-tumor ratio of the expression of VEGF was shown to be higher in cases with early recurrence cases than those without and the expression of VEGF was correlated with α -fetoprotein (AFP), protein induced by vitamin K absence-II (PIVKA II) and histological grade.²⁰

HCC RECURRENCE AND TUMOR MARKER

PRETREATMENT LEVELS OF tumor markers such as lens culinaris agglutinin A-reactive fraction of AFP (AFP-L3) and des-gamma carboxy prothrombin (DCP) were reported to be useful for the prognostic value in patients treated by locoregional thermal ablation, not in those treated by surgical resection.²¹ In the patients treated by surgical resection, postoperative AFP levels were useful for predicting recurrence.²² However, Yamamoto *et al.* reported that DCP was a more accurate marker for the recurrence than AFP.²³ Positive postoperative AFP-L3 levels were shown to be a marker of prognosis and recurrence in China.²⁴ In the patients treated by radiofrequency ablation, Beppu *et al.* reported that AFP-L3 fraction levels were significantly predictive of recurrence-free survival by multivariate analysis.²⁵

Recently, the micro-total analysis system which is a new sensitive AFP-L3 assay was established in Japan and was reported to provide great utility in determining HCC recurrence, even in the patients with low AFP concentrations.^{26,27}

HCC RECURRENCE AND DIABETES MELLITUS OR INSULIN RESISTANCE

COMPLICATION OF DIABETES mellitus (DM) is occasionally observed in patients with HCC and its impact on postoperative recurrence remains controversial. In patients with HCV-related HCC, diabetes was shown to be a risk factor for recurrence and lower rates of overall survival after surgical resection.²⁸ Insulin resistance as estimated by Homeostatic Model Assessment of Insulin Resistance (HOMA-IR) was shown to be an independent risk factor for recurrence of stage 1 HCC after curative RFA.²⁹ DM also has been shown to be a

Table 1 Candidate useful agents for the prevention of intrahepatic recurrence of hepatocellular carcinoma (HCC)

Antiviral treatment
Nucleotide analogue for hepatitis B
Interferon plus ribavirin for HCV
Systemic agents
Branched chain amino acid
Vitamin K2
Acyclic retinoid
Chemotherapeutic and molecular targeted agents

poor prognostic predictor among those with small HCC with Child–Pugh A reserve.³⁰

However, DM did not affect intra-hepatic HCC recurrence and survival of patients with HCC after RFA but persistent hepatitis was shown to affect intra-hepatic HCC recurrence and survival.³¹ A meta-analysis of the prognostic role of DM was reported in HCC patients after curative treatment and HCC patients with coexisting DM have a shorter survival time and higher risk of tumor recurrence after curative treatment.³²

In addition, visceral fat accumulation has been shown to be an independent risk factor for HCC recurrence after curative RFA in patients with non-alcoholic steatohepatitis (NASH).³³ HCC recurrence was shown to be very high in patients with NASH after curative treatment compared with HCC caused by hepatitis C virus infection, which was suggested to be of multicentric origin, similar to HCC associated with HCV infection.³⁴

SPECIFIC TRIALS FOR THE PREVENTION OF HCC RECURRENCE

TO PREVENT INTRAHEPATIC recurrence of HCC, several important trials including specific antiviral treatment and systemic agents have been reported (Table 1).

Antiviral treatment for hepatitis B virus

In the patients with hepatitis B virus related HCC, a high HBV DNA load was identified as an independent risk factor for HCC recurrence after curative RFA.³⁵ Lamivudine administration after RFA was investigated in HBV-related HCC but the overall survival and recurrence-free survival did not differ between the patients who received lamivudine treatment and those who did not, although the serum albumin level was shown to improve.³⁶ However, Chan *et al.* reported that antiviral therapy after surgical resection improved the prognosis, especially disease-free survival in HBV-related HCC.³⁷