

have shown that single nucleotide polymorphisms (SNPs) located near the *IL28B* gene are the most important determinant of virological response to PEG-IFN/RBV therapy [Ge et al., 2009; Suppiah et al., 2009; Tanaka et al., 2009; Rauch et al., 2010]. On the other hand, among patients with a virological response, the probability of a sustained virological response decreases when the patients become intolerant to therapy because of RBV-induced hemolytic anemia and receive a reduced dose of RBV [McHutchison et al., 2002; Kurosaki et al., 2012]. Genome-wide association studies have shown that variants of the inosine triphosphatase (*ITPA*) gene protect against hemolytic anemia [Fellay et al., 2010; Tanaka et al., 2011]. These variants are associated with a reduced requirement for an anemia-related dose reduction of RBV [Sakamoto et al., 2010; Thompson et al., 2010a; Kurosaki et al., 2011d; Seto et al., 2011]. However, factors other than the *ITPA* gene also contribute to the risk of severe anemia or RBV dose reduction [Ochi et al., 2010; Kurosaki et al., 2011d] and the results of studies on the impact of the *ITPA* genotype on treatment outcome are inconsistent [Ochi et al., 2010; Sakamoto et al., 2010; Thompson et al., 2010a, 2011; Kurosaki et al., 2011d].

Data mining is a novel statistical method used to extract relevant factors from a plethora of factors and combine them to predict the incidence of the outcome of interest [Breiman et al., 1980]. Decision tree analysis, a primary component of data mining analysis, has found medical applications recently [Averbook et al., 2002; Miyaki et al., 2002; Baquerizo et al., 2003; Leiter et al., 2004; Garzotto et al., 2005; Zlobec et al., 2005; Valera et al., 2007] and has proven to be a useful tool for predicting therapeutic efficacy [Kurosaki et al., 2010, 2011a,b,c, 2012] and adverse events [Hiramatsu et al., 2011] in patients with chronic hepatitis C treated with PEG-IFN/RBV therapy. Because the results of data mining analysis are presented as a flowchart [LeBlanc and Crowley, 1995], they are easily understandable and usable by clinicians lacking a detailed knowledge of statistics.

For the general application of this genetic information in clinical practice, this study aimed to construct a predictive model of severe anemia using the *ITPA* genotype, together with other relevant factors. This study also aimed to analyze the impact of the risk of anemia on treatment outcome, after adjustment for the *IL28B* genotype. These analyses were carried out at baseline and during therapy, when the early virological response became evident.

MATERIALS AND METHODS

Patients

Data were collected from a total of 446 genotype 1b chronic hepatitis C patients who were treated with PEG-IFN alpha and RBV at five hospitals and universities throughout Japan. The inclusion criteria were: (1) infection by hepatitis C genotype 1b; (2) no

co-infection with hepatitis B virus or human immunodeficiency virus; (3) no other causes of liver disease such as autoimmune hepatitis and primary biliary cirrhosis; and (4) availability of DNA for the analysis of the genetic polymorphisms of *IL28B* and *ITPA*. Patients received PEG-IFN alpha-2a (180 µg) and 2b (1.5 µg/kg) subcutaneously every week and a daily weight-adjusted dose of RBV (600 mg for patients weighing <60 kg, 800 mg for patients weighing 60–80 kg, and 1,000 mg for patients weighing >80 kg) for 48 weeks. Dose reduction or discontinuation of PEG-IFN and RBV was primarily based on the recommendations on the package inserts and the discretion of the physicians at each university and hospital. The standard duration of therapy was set at 48 weeks. No patient received erythropoietin or other growth factors for the treatment of anemia. Written informed consent was obtained from each patient, and the study protocol conformed to the ethical guidelines of the Declaration of Helsinki and was approved by the institutional ethics review committees.

Laboratory Tests

Blood samples obtained before therapy were analyzed for hematologic data, blood chemistry, and HCV RNA. Genetic polymorphisms in SNPs of the *ITPA* gene (rs1127354) and the *IL28B* gene (rs8099917) were determined using ABI TaqMan Probes (Applied Biosystems, Carlsbad, CA) and the DigiTag2 assay, respectively. Baseline creatinine clearance (CLcr) levels were calculated using the formula of Cockcroft and Gault [1976]: for males, $CLcr = [(140 - \text{age in years}) \times \text{body weight in kg}] \div (72 \times \text{serum creatinine in mg/dl})$ and for females, $CLcr = 0.85 \times [(140 - \text{age in years}) \times \text{body weight in kg}] \div (72 \times \text{serum creatinine in mg/dl})$. The stage of liver fibrosis was scored according to the METAVIR scoring system: F0 (no fibrosis), F1 (mild fibrosis: portal fibrosis without septa), F2 (moderate fibrosis: few septa), F3 (severe fibrosis: numerous septa without cirrhosis), and F4 (cirrhosis). A rapid virological response was defined as undetectable HCV RNA by qualitative PCR with a lower detection limit of 50 IU/ml (Amplicor, Roche Diagnostic Systems, Pleasanton, CA) at week 4 of therapy and a complete early virological response was defined as undetectable HCV RNA at week 12. A sustained virological response was defined as undetectable HCV RNA at 24 weeks after completion of therapy. Severe anemia was defined as hemoglobin (Hb) <10 g/dl.

Statistical Analysis

Database for analysis included the following variables: age, sex, body mass index, serum aspartate aminotransferase (AST) levels, alanine aminotransferase (ALT) levels, gamma-glutamyltransferase (GGT) levels, creatinine levels, CLcr, Hb, platelet count, serum levels of HCV RNA, and the stage of liver fibrosis

TABLE I. Patients' Baseline Characteristics

Age (years)	58.6	(9.6)
Gender: male (n, %)	185	(42%)
Body mass index (kg/m ²)	23.1	(3.7)
AST (IU/L)	59.9	(53.8)
ALT (IU/L)	69.8	(53.8)
GGT (IU/L)	48.5	(41.6)
Creatinine (mg/dl)	0.7	(0.2)
Creatinine clearance (ml/min)	89.5	(23.0)
Hemoglobin (g/dl)	14	(1.4)
Platelet count (10 ⁹ /L)	154.5	(52.1)
HCV RNA > 600,000 IU/ml (n, %)	354	(79%)
Liver fibrosis: F3-4 (n, %)	108	(24%)
Initial ribavirin dose (n, %)		
600 mg/day	300	(67%)
800 mg/day	138	(31%)
1,000 mg/day	9	(2%)
Pegylated interferon (n, %)		
alpha2a 180 mcg	58	(13%)
alpha2b 1.5 mcg/kg	388	(87%)
<i>ITPA</i> rs1127354: CC (n, %)	317	(71%)
<i>IL28B</i> rs809917: TT (n, %)	311	(70%)

AST, aspartate aminotransferase; ALT, alanine aminotransferase; GGT, gamma-glutamyltransferase.

Data expressed as mean (standard deviation) unless otherwise mentioned.

(Table I). Based on these data set, a model for predicting the risk of developing severe anemia was constructed by data mining analysis using the IBM-SPSS Modeler 13 as described previously [Kurosaki et al., 2010, 2011a,b,c; Hiramatsu et al., 2011]. Briefly, the software was used to explore the database automatically to search for optimal predictors that discriminated most efficiently patients with severe anemia from those without. The software also determined the optimal cutoff values of each predictor. Patients were divided into two groups according to the predictor and each of the two groups was repeatedly divided in the same way until no significant factor remained or 20 or fewer patients were in a group.

The incidence of severe anemia, the total dose of RBV, and treatment outcome were compared between groups with high and low risks of anemia. On univariate analysis, Student's *t*-test was used for continuous variables, and Fisher's exact test was used for categorical data. Logistic regression was used for multivariate analysis. *P* values of <0.05 were considered significant. SPSS Statistics 18 was used for these analyses.

RESULTS

Predictive Model of Severe Anemia

The incidence of severe anemia in the whole cohort was 49% (Fig. 1). The best predictor of severe anemia was the baseline Hb concentration. Patients with a low baseline Hb concentration (<14 g/dl) were more likely to develop severe anemia (67%) than those with a higher Hb (>14 g/dl) (34%). The second best predictor for those patients with a baseline Hb <14.0 g/dl was CLcr. Patients with a CLcr below 90 ml/min had

the highest incidence of severe anemia (76%). In those with a CLcr above >90 ml/min the incidence of severe anemia was 57% in patients with the CC allele of the *ITPA* gene while it was 37% in patients with the CA or AA allele. On the other hand, the second best predictor for those patients with a baseline Hb concentration above 14 g/dl was the *ITPA* genotype. Patients with the AA or AC allele had the lowest incidence of anemia (17%). For those with the *ITPA* CC allele, CLcr was the third best predictor; the optimal cutoff value was 85 ml/min for this group. The incidence of severe anemia was 49% in patients with a CLcr below 85 ml/min while it was 32% in those with a CLcr above 85 ml/min.

Following this analysis, the patients were divided into six groups, with the incidence of severe anemia ranging from 17% to 76%. Three groups with two predictors, having an incidence of anemia >40%, were defined as the high-risk group and the remainder were defined as the low-risk group. The incidence of severe anemia was higher in the high-risk group than the low-risk group (65% vs. 28%, *P* = 0.029) (Fig. 2). Comparison of the *ITPA* genotype and the predictive model showed that the sensitivity for the prediction of severe anemia was similar (75.9% vs. 76.4%) but the specificity of the predictive model was greater (33.6% vs. 59.3%).

The Risk of Anemia Impacts on Sustained Virological Responses by Patients Who Achieved an Early Virological Response

The impact of *IL28B* genotype, *ITPA* genotype, and risk group of anemia on the rate of sustained virological response was studied at baseline and week 12. At baseline, patients with the TT allele of the *IL28B* gene had a significantly higher rate of sustained virological response than those with the TG or GG allele (43% vs. 10%, *P* < 0.0001), the high-risk group for anemia had a significantly lower rate of sustained virological response than the low-risk group (28% vs. 40%, *P* = 0.011), and the *ITPA* genotype was not associated with a sustained virological response (Fig. 3A–C). At week 4, patients with rapid virological response had a high rate of sustained virological response, irrespective of the *IL28B* genotype (TT vs. TG/GG; 97% vs. 100%, *P* = 1.000), the *ITPA* genotype (CC vs. CA/AA; 95% vs. 100%, *P* = 1.000), and the risk of anemia (high vs. low; 95% vs. 100%, *P* = 1.000). Among the patients who did not achieve a rapid virological response, those with the *IL28B* TT allele had a significantly higher rate of sustained virological response than those with the TG or GG allele (38% vs. 8%, *P* < 0.0001), and the high-risk group for anemia had a significantly lower rate of sustained virological response than the low-risk group (24% vs. 35%, *P* = 0.015). At week 12, in patients who achieved a complete early virological response, the *IL28B* genotype was not associated with a sustained virological response, while the high-risk group for anemia had a

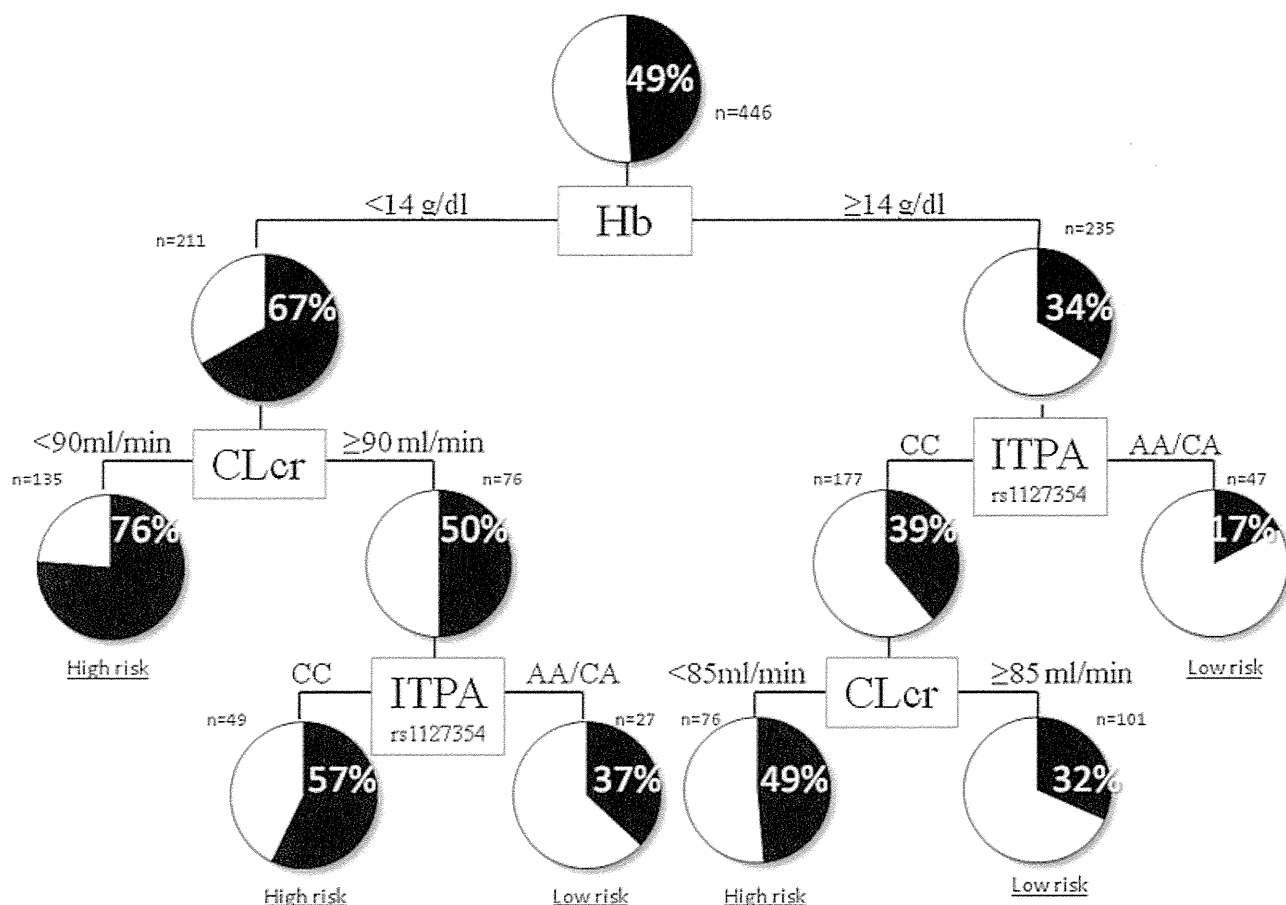


Fig. 1. The predictive model for severe anemia. The boxes indicate the factors used to differentiate patients and the cutoff values for the different groups. The pie charts indicate the rate of severe anemia (Hb <10.0 g/dl) for each group of patients, after differentiation. Terminal groups of patients differentiated by analysis are classified as at high risk if the rate is >40% and low risk if the rate is <40%. ITPA, inosine triphosphatase; CLcr, creatinine clearance; Hb, hemoglobin.

significantly lower rate of sustained virological response than the low-risk group (59% vs. 76%, $P = 0.013$) (Fig. 3D–F). In patients who did not achieve a complete early virological response, the *IL28B* genotype was a significant predictor of a sustained virological response (TT vs. TG/GG; 14% vs. 2%, $P < 0.0001$) but a high risk for anemia was not (high vs. low; 10% vs. 6%, $P = 0.361$).

From multivariate analysis (Table II), the *IL28B* genotype was the most important predictor of a sustained virological response at baseline [adjusted odds ratio 9.88 (95% confidence interval 5.01–19.48), $P < 0.0001$], along with female sex [0.42 (0.26–0.68), $P < 0.0001$], platelet count [1.09 (1.04–1.15), $P < 0.0001$], advanced fibrosis [0.49 (0.27–0.91), $P = 0.024$], and baseline HCV RNA load [4.14 (2.27–7.55), $P < 0.0001$]. At week 4, in patients without a rapid virological response, the *IL28B* genotype remained the most important predictor of a sustained virological response [7.16 (3.60–14.25), $P < 0.0001$], along with female sex and platelet count. At week 12, in patients with a complete early virological response, the risk of anemia was an independent and significant

predictor of a sustained virological response [0.47 (0.24–0.91), $P = 0.026$], together with the platelet count and HCV RNA load, but the *IL28B* genotype was not associated with a sustained virological response. In patients without a complete early virological response, the *IL28B* genotype was a predictor of a sustained virological response [9.13 (2.02–41.3), $P = 0.004$] along with the platelet count. Thus, *IL28B* was a significant predictor of a sustained virological response at baseline and among virological non-responders at weeks 4 and 12. On the other hand, once a complete early virological response was achieved, the *IL28B* genotype was no longer associated with a sustained virological response but the risk of anemia was an independent predictor of a sustained virological response.

The Risk of Anemia, RBV Dose, and Treatment Outcome in Patients With a Complete Early Virological Response

Patients who achieved a complete early virological response were stratified according to adherence to

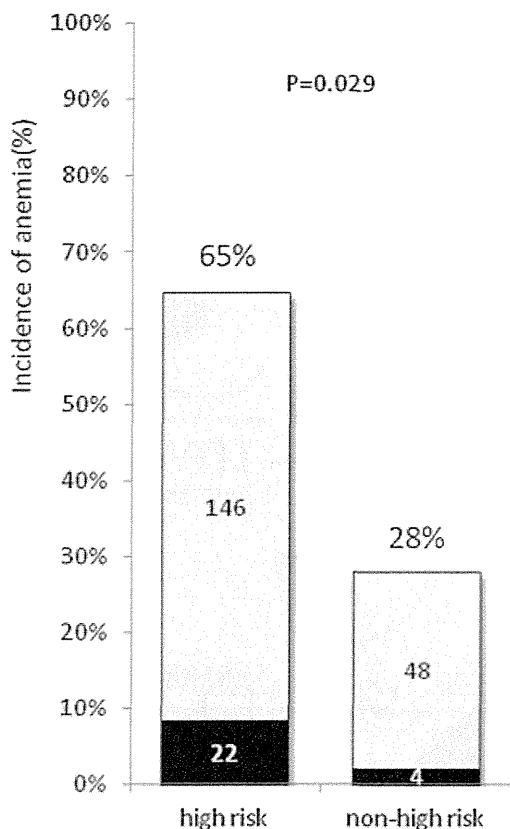


Fig. 2. The incidence of severe anemia stratified by risk of anemia. The incidence of anemia during therapy is shown for each group of patients at high and low risk of anemia. The black and white bars represent the percentages of patients with Hb concentrations below 8.5 g/dl and above 10 g/dl, respectively.

RBV ($\leq 40\%$, 41–60%, 61–80%, and $>80\%$), which showed that patients with a high risk of anemia were predominantly in subgroups with a lower adherence to RBV ($\leq 40\%$, 41–60%, and 61–80%), whereas patients with a low risk of anemia were predominantly in subgroups with a higher adherence to RBV ($>80\%$) (Fig. 4, upper panel). The percentage of patients who received $>80\%$ of the planned dose of RBV was significantly higher in the low-risk group for anemia than in the high-risk group (74% vs. 55%, $P < 0.0001$).

Within the groups with high and low risks of anemia, there was a stepwise increase in the rate of sustained virological response according to the increase in adherence to RBV (Fig. 4, lower panel). The rate of sustained virological response was higher in patients who received $>80\%$ of the planned dose of RBV than those who received less, for both high-risk patients (71% vs. 47%, $P = 0.016$) and low-risk patients (81% vs. 60%, $P = 0.072$). Within the same subgroup of RBV adherence, however, the rate of sustained virological response did not differ between patients with a high risk and a low risk of anemia. Taken together, these results suggest that patients with a high risk of anemia have a disadvantage because they are likely

to be intolerant to RBV, leading to reduced adherence to RBV throughout the 48 weeks of therapy and a reduced rate of sustained virological response. However, if $>80\%$ adherence to RBV could be obtained, the rate of sustained virological response would increase by 24%.

DISCUSSION

This study confirmed previous reports that the *IL28B* genotype is the most significant predictor of a sustained virological response to PEG-IFN plus RBV therapy in chronic hepatitis C patients at baseline [Ge et al., 2009; Suppiah et al., 2009; Tanaka et al., 2009; Rauch et al., 2010; Kurosaki et al., 2011c] and at week 4 [Thompson et al., 2010b], but it had no impact on the rate of sustained virological response among those patients who achieved a complete early virological response [Thompson et al., 2010b; Kurosaki et al., 2011c]. In contrast, the risk of anemia, assessed by the combination of the *ITPA* genotype, baseline Hb concentration, and baseline CLcr, was found to be associated with a sustained virological response in patients who achieved a complete early virological response. Generally, a complete early virological response is the hallmark of a high probability of a sustained virological response, but the rate of sustained virological responses in patients who achieved a complete early virological response and had a high risk of anemia was as low as 59%. This reduced rate of sustained virological response in these patients was attributable to poor adherence to RBV throughout the 48 weeks of therapy. Because administration of $>80\%$ of the planned RBV dose increased the rate of sustained virological response by 24%, it may be postulated that personalizing the treatment schedule to achieve a sufficient dose of RBV, such as extension of treatment duration, may improve sustained virological response rates in these patients. Clearly, this postulate needs to be confirmed in future study. Thus, the findings presented here may have the potential to support selection of the optimum, personalized treatment strategy for an individual patient, based on the risk of anemia.

The degree of hemolytic anemia caused by RBV varies among individuals. A reduction of the Hb concentration early during therapy predicts the likely development of severe anemia [Hiramatsu et al., 2008, 2011] but there are no reliable predictors at baseline. A breakthrough came from the results of a genome-wide association study that revealed that variants of the *ITPA* gene are protective against hemolytic anemia [Fellay et al., 2010]. The *ITPA* genotype has been shown repeatedly to be associated with the degree of hemolytic anemia and dose reduction of RBV [Fellay et al., 2010; Sakamoto et al., 2010; Thompson et al., 2010a; Seto et al., 2011; Tanaka et al., 2011; Kurosaki et al., 2011d]. However, factors other than the *ITPA* gene, such as baseline Hb concentrations [Ochi et al., 2010; Kurosaki et al., 2011d], platelet counts [Ochi

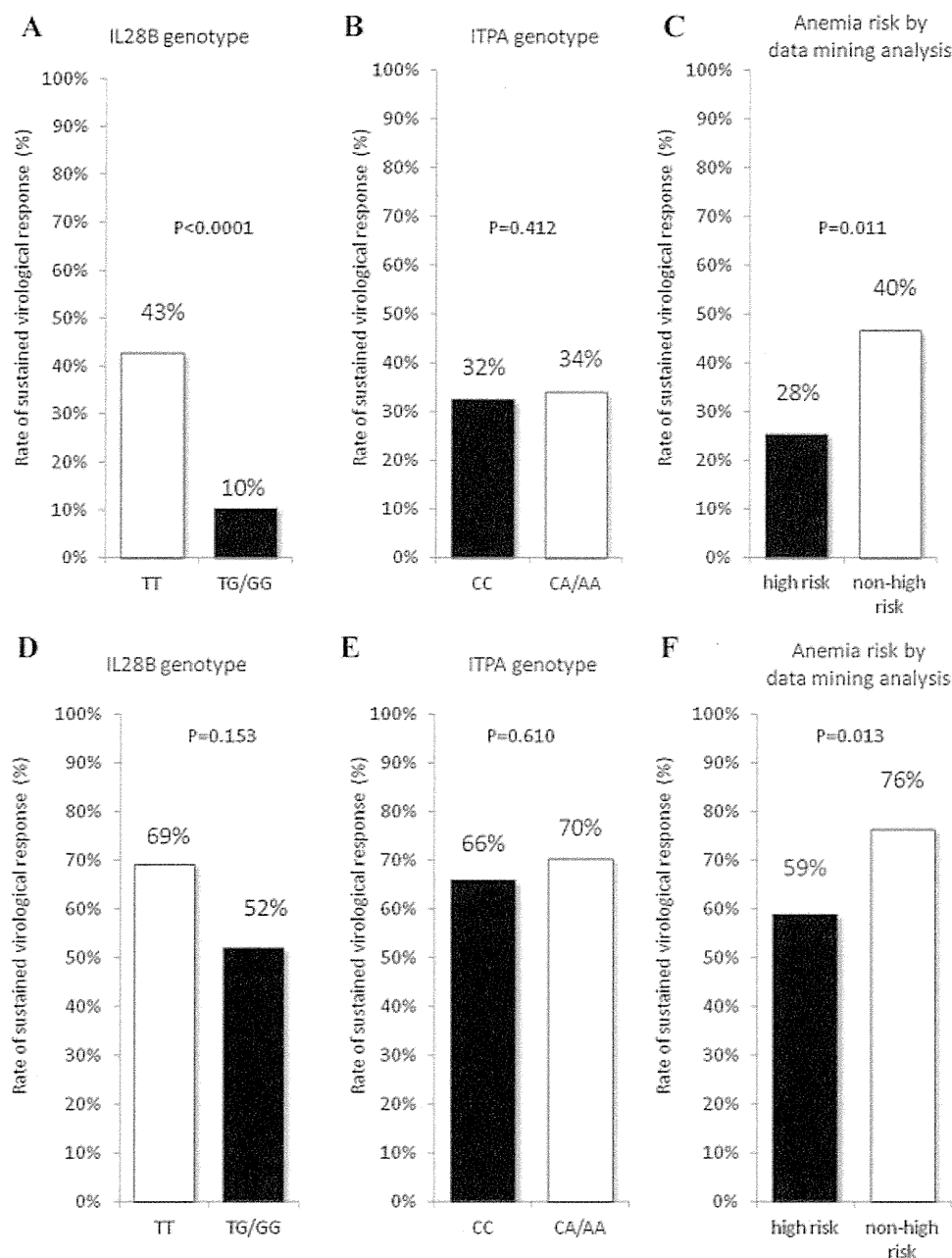


Fig. 3. Rates of sustained virological responses at baseline and among those with a virological response at week 12. The impacts of *IL28B* genotype, *ITPA* genotype, and risk group of anemia on the rate of sustained virological response were studied at baseline (A–C) and among those with complete early virological responses (defined as undetectable HCV RNA at week 12) (D–F). At baseline, those with the TT allele of the *IL28B* gene had a significantly higher rate of sustained virological response than those with the TG or GG allele and the group at high-risk of anemia had a significantly lower rate of sustained virological response than the low-risk group. Among patients with complete early virological responses, the *IL28B* genotype was not associated with a sustained virological response, while the group at high-risk of anemia had a significantly lower rate of sustained virological response than the low-risk group.

et al., 2010], and CLcr [Kurosaki et al., 2011d], also contribute to the risk of severe anemia or RBV dose reduction. In the present study, the predictive model of anemia based on the data mining analysis selected the *ITPA* genotype, baseline Hb concentration, and

baseline CLcr as predictive factors and identified six subgroups of patients with a variable rate of severe anemia, ranging from 17% to 76%. The specificity of the prediction of severe anemia was improved by 25.7% in the predictive model, compared to *ITPA*

TABLE II. Logistic Regression Analysis for Factors Associated With Sustained Virological Response at Baseline, Week 4 and Week 12

	Multi-variable		
	Odds	95% CI	P-value
Pre-treatment			
Sex: female	0.42	0.26–0.68	<0.0001
Platelet (10 ⁹ /L)	1.09	1.04–1.15	<0.0001
Fibrosis: F3-4	0.49	0.27–0.91	0.024
HCV RNA: <600,000 IU/L	4.14	2.27–7.55	<0.0001
<i>IL28B</i> rs8099917: TT	9.88	5.01–19.48	<0.0001
At week 4			
Non-RVR patients			
Sex: female	0.45	0.28–0.72	0.001
Platelet (10 ⁹ /L)	1.10	1.05–1.16	0.000
<i>IL28B</i> rs8099917: TT	7.16	3.60–14.25	<0.0001
At week 12			
cEVR patients			
Platelet (10 ⁹ /L)	1.09	1.02–1.17	0.015
HCV RNA: <600,000 IU/L	3.21	1.39–7.55	0.007
High-risk of anemia ^a	0.47	0.24–0.91	0.026
At week 12			
Non-cEVR patients			
Platelet (10 ⁹ /L)	1.11	1.02–1.21	0.017
<i>IL28B</i> rs8099917: TT	9.13	2.02–41.3	0.004

RVR: rapid virological response, defined as undetectable HCV RNA at week 4.

cEVR: complete early virological response, defined as undetectable HCV RNA at week 12.

^aHigh-risk of anemia defined by decision tree analysis includes the following groups: (1) baseline hemoglobin <14.0 g/dl and creatinine clearance <90 ml/min, (2) baseline hemoglobin <14.0 g/dl, creatinine clearance ≥90 ml/min and *ITPA* rs1127354 genotype CC, and (3) baseline hemoglobin ≥14.0 g/dl, *ITPA* rs1127354 genotype CC, and creatinine clearance <85 ml/min.

genotyping alone. Because hemolytic anemia induced by RBV is one of the major adverse events leading to premature termination of therapy [Fried et al., 2002], a method to predict the risk of severe anemia before treatment is important clinically. A predictive model of anemia may have the potential to support individualized treatment strategies; patients at high risk of anemia may be tested intensively for anemia or may be candidates for erythropoietin therapy, whereas those with a low risk of anemia may be treated with a higher dose of RBV. Prediction of anemia will remain important in the era of direct antiviral agents for chronic hepatitis C, because these newer therapies still require RBV and PEG-IFN in combination, and the degree of anemia complicating these therapies may be even greater than with the current combination therapy [McHutchison et al., 2009; Kwo et al., 2010].

Studies of the impact of the *ITPA* genotype on treatment outcome have produced conflicting results. Previous studies of American [Thompson et al., 2010a] and Italian [Thompson et al., 2011] cohorts did not find any association between the *ITPA* genotype and treatment outcome, whereas a marginal difference was observed in a report from Japan [Ochi et al., 2010]. Moreover, with a subgroup analysis of Japanese patients, the variant of the *ITPA* gene was

associated with a sustained virological response in patients with the *IL28B* major genotype [Kurosaki et al., 2011d], in patients infected with HCV other than genotype 1 [Sakamoto et al., 2010], and in patients with pre-treatment Hb concentrations between 13.5 and 15 g/dl [Azakami et al., 2011]. These inconsistent results may be because the impact of anemia may be greater on a cohort of aged patients, such as in Japan. Another reason may be that the *ITPA* genotype is not the sole determinant of anemia; the *ITPA* genotype alone was not associated with treatment outcome in the present study but a high-risk of anemia, defined by the combination of the *ITPA* genotype, baseline Hb concentration, and baseline CLcr, was associated with sustained virological responses by patients with complete early virological responses, even after adjustment for the *IL28B* genotype and other relevant factors. This is in contrast to the finding that the *IL28B* genotype is an independent and significant predictor at baseline of a sustained virological response by patients without a rapid virological response and those without a complete early virological response, but not those with a complete early virological response. These results indicate that the *IL28B* genotype could be used to predict a sustained virological response at baseline or during therapy in patients in whom HCV RNA has not yet become undetectable, but it has no predictive value in patients in whom HCV RNA has become undetectable. The risk of anemia may be used to predict sustained virological responses in a selected subgroup of patients who achieve a complete early virological response.

Patients who received more than 80% of the planned dose of PEG-IFN or RBV had a higher rate of sustained virological responses than those who received a lower cumulative dose [McHutchison et al., 2002; Davis et al., 2003]. Patients who achieve a complete early virological response usually have a good chance of a sustained virological response and the treatment duration is not extended beyond 48 weeks. However, reduced adherence to drugs in these patients was related to relapse after the completion of 48 weeks of therapy [Hiramatsu et al., 2009; Kurosaki et al., 2012]. In the present study, the rate of sustained virological response was 59% in patients who achieved a complete early virological response but had a high risk of anemia, 17% lower than in patients with a low risk of anemia. However, there was a step-wise increase in the rate of sustained virological response according to the increase in adherence to RBV, and the rate of sustained virological response was higher in high-risk patients who received >80% of the planned dose of RBV (71% vs. 47%). This 24% increase in sustained virological response was observed among the patients in the present study who received 48 weeks of treatment. These findings suggest that receiving a sufficient RBV dose is essential for patients with a complete early virological response to attain a sustained virological response and that the treatment strategy should be personalized for patients with a

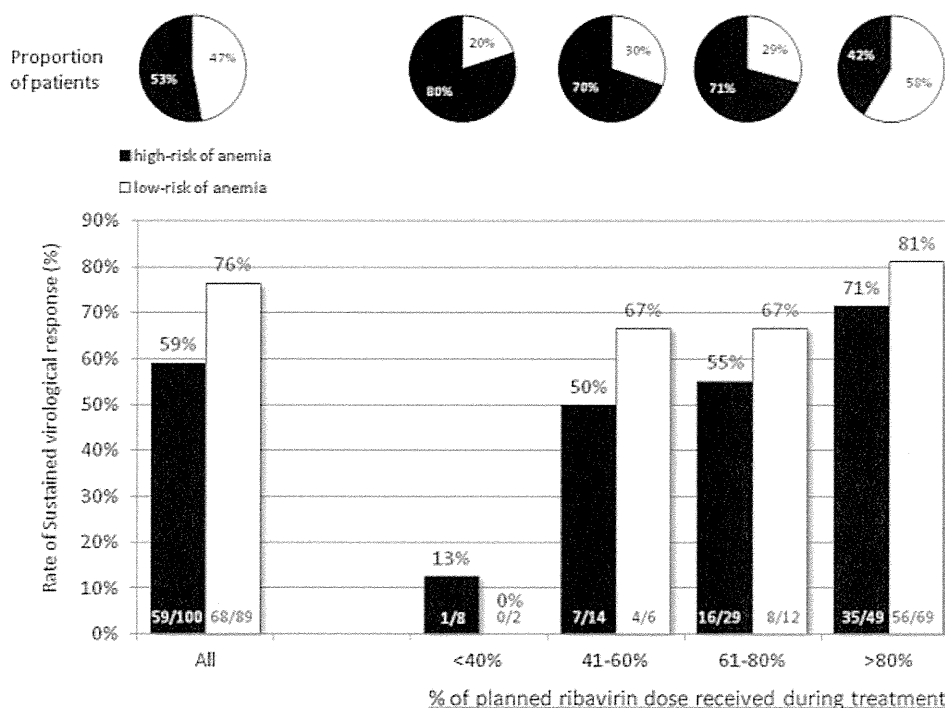


Fig. 4. The impact of risk of anemia and RBV dose on treatment outcome after a complete early virological response. Patients with complete early virological responses were divided into subgroups according to their adherence to RBV: $\leq 40\%$, 41–60%, 61–80%, and $>80\%$. For each subgroup, the proportion of patients with a high risk and a low risk of anemia is shown in the upper panel by pie charts, and the rates of sustained virological responses, stratified by high risk and low risk of anemia, are shown in the lower panel by bar graphs. The black and white bars or charts represent patients with high and low risks of anemia, respectively.

high risk of anemia to extend the duration of treatment, even those patients with a complete early virological response, to obtain $>80\%$ adherence to RBV.

In conclusion, the combination of the *ITPA* genotype, baseline Hb concentration, and baseline CLcr could be used as a pre-treatment predictor of anemia. The risk of anemia thus identified is associated with adherence to RBV and impacts on the treatment outcome of patients who achieve a complete early virological response. This is in contrast to the major role of the *IL28B* genotype in the prediction of sustained virological responses at baseline and among non-responders at weeks 4 and 12. Patients who achieve a complete early virological response generally have a high probability of a sustained virological response but those who have a high risk of anemia have a high rate of relapse because of reduced adherence to RBV. To improve the rate of sustained virological responses in these patients, it may be postulated that the treatment schedule may be personalized to obtain $>80\%$ adherence to RBV. Clearly, this postulate needs to be confirmed in a future study.

REFERENCES

Averbook BJ, Fu P, Rao JS, Mansour EG. 2002. A long-term analysis of 1018 patients with melanoma by classic Cox regression and tree-structured survival analysis at a major referral

center: Implications on the future of cancer staging. *Surgery* 132:589–602.

Azakami T, Hayes CN, Sezaki H, Kobayashi M, Akuta N, Suzuki F, Kumada H, Abe H, Miki D, Tsuge M, Imamura M, Kawakami Y, Takahashi S, Ochi H, Nakamura Y, Kamatani N, Chayama K. 2011. Common genetic polymorphism of *ITPA* gene affects ribavirin-induced anemia and effect of peg-interferon plus ribavirin therapy. *J Med Virol* 83:1048–1057.

Baquerizo A, Anselmo D, Shackleton C, Chen TW, Cao C, Weaver M, Gornbein J, Geevarghese S, Nissen N, Farmer D, Demetriou A, Busuttill RW. 2003. Phosphorus as an early predictive factor in patients with acute liver failure. *Transplantation* 75:2007–2014.

Breiman LJH, Friedman RA, Olshen CJ, Stone CM. 1980. Classification and regression trees. Calif: Wadsworth.

Cockcroft DW, Gault MH. 1976. Prediction of creatinine clearance from serum creatinine. *Nephron* 16:31–41.

Davis GL, Wong JB, McHutchison JG, Manns MP, Harvey J, Albrecht J. 2003. Early virologic response to treatment with peginterferon alfa-2b plus ribavirin in patients with chronic hepatitis C. *Hepatology* 38:645–652.

Fellay J, Thompson AJ, Ge D, Gumbs CE, Urban TJ, Shianna KV, Little LD, Qiu P, Bertelsen AH, Watson M, Warner A, Muir AJ, Brass C, Albrecht J, Sulkowski M, McHutchison JG, Goldstein DB. 2010. *ITPA* gene variants protect against anaemia in patients treated for chronic hepatitis C. *Nature* 464: 405–408.

Fried MW, Shiffman ML, Reddy KR, Smith C, Marinos G, Goncalves FL, Jr., Haussinger D, Diago M, Carosi G, Dhumeaux D, Craxi A, Lin A, Hoffman J, Yu J. 2002. Peginterferon alfa-2a plus ribavirin for chronic hepatitis C virus infection. *N Engl J Med* 347:975–982.

Garzotto M, Park Y, Mongoue-Tchokote S, Bledsoe J, Peters L, Blank BH, Austin D, Beer TM, Mori M. 2005. Recursive partitioning for

- risk stratification in men undergoing repeat prostate biopsies. *Cancer* 104:1911–1917.
- Ge D, Fellay J, Thompson AJ, Simon JS, Shianna KV, Urban TJ, Heinzen EL, Qiu P, Bertelsen AH, Muir AJ, Sulkowski M, McHutchison JG, Goldstein DB. 2009. Genetic variation in IL28B predicts hepatitis C treatment-induced viral clearance. *Nature* 461:399–401.
- Hiramatsu N, Kurashige N, Oze T, Takehara T, Tamura S, Kasahara A, Oshita M, Katayama K, Yoshihara H, Imai Y, Kato M, Kawata S, Tsubouchi H, Kumada H, Okanoue T, Kakumu S, Hayashi N. 2008. Early decline of hemoglobin can predict progression of hemolytic anemia during pegylated interferon and ribavirin combination therapy in patients with chronic hepatitis C. *Hepatology* 38:52–59.
- Hiramatsu N, Oze T, Yakushijiin T, Inoue Y, Igura T, Mochizuki K, Imanaka K, Kaneko A, Oshita M, Hagiwara H, Mita E, Nagase T, Ito T, Inui Y, Hijioka T, Katayama K, Tamura S, Yoshihara H, Imai Y, Kato M, Yoshida Y, Tatsumi T, Ohkawa K, Kiso S, Kanto T, Kasahara A, Takehara T, Hayashi N. 2009. Ribavirin dose reduction raises relapse rate dose-dependently in genotype 1 patients with hepatitis C responding to pegylated interferon alpha-2b plus ribavirin. *J Viral Hepat* 16: 586–594.
- Hiramatsu N, Kurosaki M, Sakamoto N, Iwasaki M, Sakamoto M, Suzuki Y, Sugauchi F, Tamori A, Kakinuma S, Matsuura K, Izumi N. 2011. Pretreatment prediction of anemia progression by pegylated interferon alpha-2b plus ribavirin combination therapy in chronic hepatitis C infection: Decision-tree analysis. *J Gastroenterol* 46:1111–1119.
- Kim RW. 2002. Global epidemiology and burden of hepatitis C. *Microbes Infect* 4:1219–1225.
- Kurosaki M, Matsunaga K, Hirayama I, Tanaka T, Sato M, Yasui Y, Tamaki N, Hosokawa T, Ueda K, Tsuchiya K, Nakanishi H, Ikeda H, Itakura J, Takahashi Y, Asahina Y, Higaki M, Enomoto N, Izumi N. 2010. A predictive model of response to peginterferon ribavirin in chronic hepatitis C using classification and regression tree analysis. *Hepatology Res* 40:251–260.
- Kurosaki M, Sakamoto N, Iwasaki M, Sakamoto M, Suzuki Y, Hiramatsu N, Sugauchi F, Tamori A, Nakagawa M, Izumi N. 2011a. Sequences in the interferon sensitivity-determining region and core region of hepatitis C virus impact pretreatment prediction of response to PEG-interferon plus ribavirin: Data mining analysis. *J Med Virol* 83:445–452.
- Kurosaki M, Sakamoto N, Iwasaki M, Sakamoto M, Suzuki Y, Hiramatsu N, Sugauchi F, Yatsuhashi H, Izumi N. 2011b. Pretreatment prediction of response to peginterferon plus ribavirin therapy in genotype 1 chronic hepatitis C using data mining analysis. *J Gastroenterol* 46:401–409.
- Kurosaki M, Tanaka Y, Nishida N, Sakamoto N, Enomoto N, Honda M, Sugiyama M, Matsuura K, Sugauchi F, Asahina Y, Nakagawa M, Watanabe M, Sakamoto M, Maekawa S, Sakai A, Kaneko S, Ito K, Masaki N, Tokunaga K, Izumi N, Mizokami M. 2011c. Pretreatment prediction of response to pegylated-interferon plus ribavirin for chronic hepatitis C using genetic polymorphism in IL28B and viral factors. *J Hepatology* 54:439–448.
- Kurosaki M, Tanaka Y, Tanaka K, Suzuki Y, Hoshioka Y, Tamaki N, Kato T, Yasui Y, Hosokawa T, Ueda K, Tsuchiya K, Kuzuya T, Nakanishi H, Itakura J, Takahashi Y, Asahina Y, Matsuura K, Sugauchi F, Enomoto N, Nishida N, Tokunaga K, Mizokami M, Izumi N. 2011d. Relationship between genetic polymorphisms of the inosine triphosphatase gene and anemia or outcome after treatment with pegylated-interferon and ribavirin. *Antivir Ther* 16:685–694.
- Kurosaki M, Hiramatsu N, Sakamoto M, Suzuki Y, Iwasaki M, Tamori A, Matsuura K, Kakinuma S, Sugauchi F, Sakamoto N, Nakagawa M, Yatsuhashi H, Izumi N. 2012. Age and total ribavirin dose is an independent predictor of relapse among early virological responders to peg-interferon plus ribavirin therapy in chronic hepatitis C revealed by data mining analysis. *Antivir Ther* 17:35–43.
- Kwo PY, Lawitz EJ, McCone J, Schiff ER, Vierling JM, Pound D, Davis MN, Galati JS, Gordon SC, Ravendhran N, Rossaro L, Anderson FH, Jacobson IM, Rubin R, Koury K, Pedicone LD, Brass CA, Chaudhri E, Albrecht JK. 2010. Efficacy of boceprevir, an NS3 protease inhibitor, in combination with peginterferon alpha-2b and ribavirin in treatment-naive patients with genotype 1 hepatitis C infection (SPRINT-1): An open-label, randomised, multicentre phase 2 trial. *Lancet* 376:705–716.
- LeBlanc M, Crowley J. 1995. A review of tree-based prognostic models. *Cancer Treat Res* 75:113–124.
- Leiter U, Buettner PG, Eigentler TK, Garbe C. 2004. Prognostic factors of thin cutaneous melanoma: An analysis of the Central Malignant Melanoma Registry of the German Dermatological Society. *J Clin Oncol* 22:3660–3667.
- Manns MP, McHutchison JG, Gordon SC, Rustgi VK, Shiffman M, Reindollar R, Goodman ZD, Koury K, Ling M, Albrecht JK. 2001. Peginterferon alfa-2b plus ribavirin compared with interferon alfa-2b plus ribavirin for initial treatment of chronic hepatitis C: A randomised trial. *Lancet* 358:958–965.
- McHutchison JG, Manns M, Patel K, Poynard T, Lindsay KL, Trepo C, Dienstag J, Lee WM, Mak C, Garaud JJ, Albrecht JK. 2002. Adherence to combination therapy enhances sustained response in genotype-1-infected patients with chronic hepatitis C. *Gastroenterology* 123:1061–1069.
- McHutchison JG, Everson GT, Gordon SC, Jacobson IM, Sulkowski M, Kauffman R, McNair L, Alam J, Muir AJ. 2009. Telaprevir with peginterferon and ribavirin for chronic HCV genotype 1 infection. *N Engl J Med* 360:1827–1838.
- Miyaki K, Takei I, Watanabe K, Nakashima H, Omae K. 2002. Novel statistical classification model of type 2 diabetes mellitus patients for tailor-made prevention using data mining algorithm. *J Epidemiol* 12:243–248.
- Ochi H, Maekawa T, Abe H, Hayashida Y, Nakano R, Kubo M, Tsunoda T, Hayes CN, Kumada H, Nakamura Y, Chayama K. 2010. Inosine triphosphate pyrophosphatase polymorphism affects ribavirin-induced anemia and outcomes of therapy—A genome-wide study of Japanese hepatitis C virus patients. *Gastroenterology* 139:1190–1197.
- Rauch A, Kutalik Z, Descombes P, Cai T, Di Giulio J, Mueller T, Bochud M, Battagay M, Bernasconi E, Borovicka J, Colombo S, Cerny A, Dufour JF, Furrer H, Gunthard HF, Heim M, Hirschel B, Malinverni R, Moradpour D, Mullhaupt B, Witteck A, Beckmann JS, Berg T, Bergmann S, Negro F, Telenti A, Bochud PY. 2010. Genetic variation in IL28B is associated with chronic hepatitis C and treatment failure: A genome-wide association study. *Gastroenterology* 138:1338–1345.
- Sakamoto N, Tanaka Y, Nakagawa M, Yatsuhashi H, Nishiguchi S, Enomoto N, Azuma S, Nishimura-Sakurai Y, Kakinuma S, Nishida N, Tokunaga K, Honda M, Ito K, Mizokami M, Watanabe M. 2010. ITPA gene variant protects against anemia induced by pegylated interferon-alpha and ribavirin therapy for Japanese patients with chronic hepatitis C. *Hepatology* 40: 1063–1071.
- Seto WK, Tanaka Y, Liu K, Lai CL, Yuen MF. 2011. The effects of IL-28B and ITPA polymorphisms on treatment of hepatitis C virus genotype 6. *Am J Gastroenterol* 106:1007–1008.
- Suppiah V, Moldovan M, Ahlenstiel G, Berg T, Weltman M, Abate ML, Bassendine M, Spengler U, Dore GJ, Powell E, Riordan S, Sheridan D, Smedile A, Fragomeli V, Muller T, Bahlo M, Stewart GJ, Booth DR, George J. 2009. IL28B is associated with response to chronic hepatitis C interferon-alpha and ribavirin therapy. *Nat Genet* 41:1100–1104.
- Tanaka Y, Nishida N, Sugiyama M, Kurosaki M, Matsuura K, Sakamoto N, Nakagawa M, Korenaga M, Hino K, Hige S, Ito Y, Mita E, Tanaka E, Mochida S, Murawaki Y, Honda M, Sakai A, Hiasa Y, Nishiguchi S, Koike A, Sakaida I, Imamura M, Ito K, Yano K, Masaki N, Sugauchi F, Izumi N, Tokunaga K, Mizokami M. 2009. Genome-wide association of IL28B with response to pegylated interferon-alpha and ribavirin therapy for chronic hepatitis C. *Nat Genet* 41:1105–1109.
- Tanaka Y, Kurosaki M, Nishida N, Sugiyama M, Matsuura K, Sakamoto N, Enomoto N, Yatsuhashi H, Nishiguchi S, Hino K, Hige S, Itoh Y, Tanaka E, Mochida S, Honda M, Hiasa Y, Koike A, Sugauchi F, Kaneko S, Izumi N, Tokunaga K, Mizokami M. 2011. Genome-wide association study identified ITPA/DDR1G1 variants reflecting thrombocytopenia in pegylated interferon and ribavirin therapy for chronic hepatitis C. *Hum Mol Genet* 20:3507–3516.
- Thompson AJ, Fellay J, Patel K, Tillmann HL, Naggie S, Ge D, Urban TJ, Shianna KV, Muir AJ, Fried MW, Afdhal NH, Goldstein DB, McHutchison JG. 2010a. Variants in the ITPA gene protect against ribavirin-induced hemolytic anemia and decrease the need for ribavirin dose reduction. *Gastroenterology* 139:1181–1189.
- Thompson AJ, Muir AJ, Sulkowski MS, Ge D, Fellay J, Shianna KV, Urban T, Afdhal NH, Jacobson IM, Esteban R, Poordad F,

- Lawitz EJ, McCone J, Shiffman ML, Galler GW, Lee WM, Reindollar R, King JW, Kwo PY, Ghalib RH, Freilich B, Nyberg LM, Zeuzem S, Poynard T, Vock DM, Pieper KS, Patel K, Tillmann HL, Noviello S, Koury K, Pedicone LD, Brass CA, Albrecht JK, Goldstein DB, McHutchison JG. 2010b. Interleukin-28B polymorphism improves viral kinetics and is the strongest pretreatment predictor of sustained virologic response in genotype 1 hepatitis C virus. *Gastroenterology* 139:120–129 e118.
- Thompson AJ, Santoro R, Piazzolla V, Clark PJ, Naggie S, Tillmann HL, Patel K, Muir AJ, Shianna KV, Mottola L, Petruzzellis D, Romano M, Sogari F, Facciorusso D, Goldstein DB, McHutchison JG, Mangia A. 2011. Inosine triphosphatase genetic variants are protective against anemia during antiviral therapy for HCV2/3 but do not decrease dose reductions of RBV or increase SVR. *Hepatology* 53:389–395.
- Valera VA, Walter BA, Yokoyama N, Koyama Y, Iiai T, Okamoto H, Hatakeyama K. 2007. Prognostic groups in colorectal carcinoma patients based on tumor cell proliferation and classification and regression tree (CART) survival analysis. *Ann Surg Oncol* 14:34–40.
- Zlobec I, Steele R, Nigam N, Compton CC. 2005. A predictive model of rectal tumor response to preoperative radiotherapy using classification and regression tree methods. *Clin Cancer Res* 11:5440–5443.

Model Incorporating the *ITPA* Genotype Identifies Patients at High Risk of Anemia and Treatment Failure With Pegylated-Interferon Plus Ribavirin Therapy for Chronic Hepatitis C

Masayuki Kurosaki,¹ Yasuhito Tanaka,² Nao Nishida,³ Naoya Sakamoto,⁴ Nobuyuki Enomoto,⁵ Kentaro Matsuura,² Yasuhiro Asahina,⁶ Mina Nakagawa,⁶ Mamoru Watanabe,⁶ Minoru Sakamoto,⁵ Shinya Maekawa,⁵ Katsushi Tokunaga,³ Masashi Mizokami,⁷ and Namiki Izumi^{1*}

¹Department of Gastroenterology and Hepatology, Musashino Red Cross Hospital, Tokyo, Japan

²Department of Virology, Liver Unit, Nagoya City University Graduate School of Medical Sciences, Nagoya, Japan

³Department of Human Genetics, Graduate School of Medicine, University of Tokyo, Tokyo, Japan

⁴Department of Gastroenterology and Hematology, Hokkaido University, Sapporo, Japan

⁵First Department of Internal Medicine, University of Yamanashi, Yamanashi, Japan

⁶Department of Gastroenterology and Hepatology, Tokyo Medical and Dental University, Tokyo, Japan

⁷Research Center for Hepatitis and Immunology, International Medical Center of Japan Konodai Hospital, Ichikawa, Japan

This study aimed to develop a model for predicting anemia using the inosine triphosphatase (*ITPA*) genotype and to evaluate its relationship with treatment outcome. Patients with genotype 1b chronic hepatitis C ($n = 446$) treated with peg-interferon alpha and ribavirin (RBV) for 48 weeks were genotyped for the *ITPA* (rs1127354) and *IL28B* (rs8099917) genes. Data mining analysis generated a predictive model for anemia (hemoglobin (Hb) concentration <10 g/dl); the CC genotype of *ITPA*, baseline Hb <14.0 g/dl, and low creatinine clearance (CLcr) were predictors of anemia. The incidence of anemia was highest in patients with Hb <14.0 g/dl and CLcr <90 ml/min (76%), followed by Hb <14.0 g/dl and *ITPA* CC (57%). Patients with Hb ≥ 14.0 g/dl and *ITPA* AA/CA had the lowest incidence of anemia (17%). Patients with two predictors (high-risk) had a higher incidence of anemia than the others (64% vs. 28%, $P < 0.0001$). At baseline, the *IL28B* genotype was a predictor of a sustained virological response [adjusted odds ratio 9.88 (95% confidence interval 5.01–19.48), $P < 0.0001$]. In patients who achieved an early virological response, the *IL28B* genotype was not associated with a sustained virological response, while a high risk of anemia was a significant negative predictor of a sustained virological response [0.47 (0.24–0.91), $P = 0.026$]. For high-risk patients with an early virological response, giving $>80\%$ of the planned RBV dose increased sustained virological responses by 24%. In conclusion, a predictive model

incorporating the *ITPA* genotype could identify patients with a high risk of anemia and reduced probability of sustained virological response.

J. Med. Virol. 85:449–458, 2013.

© 2013 Wiley Periodicals, Inc.

KEY WORDS: hemolytic anemia; ribavirin; creatinine clearance; antiviral therapy

INTRODUCTION

Hepatitis C virus (HCV) infection is a leading cause of cirrhosis and hepatocellular carcinoma worldwide [Kim, 2002]. The rate of eradication of HCV by pegylated interferon (PEG-IFN) plus ribavirin (RBV), defined as a sustained virological response, is around 50% in patients with HCV genotype 1 [Manns et al., 2001; Fried et al., 2002]. Failure of treatment is attributable to the lack of a virological response or relapse after completion of therapy. Genome-wide association studies and subsequent cohort studies

Grant sponsor: Ministry of Health, Labor and Welfare, Japan.

Conflicts of interest and financial disclosures: None reported.

*Correspondence to: Namiki Izumi, MD, PhD, Department of Gastroenterology and Hepatology, Musashino Red Cross Hospital, 1-26-1 Kyonan-cho, Musashino-shi, Tokyo 180-8610, Japan. E-mail: nizumi@musashino.jrc.or.jp

Accepted 19 November 2012

DOI 10.1002/jmv.23497

Published online 7 January 2013 in Wiley Online Library (wileyonlinelibrary.com).

have shown that single nucleotide polymorphisms (SNPs) located near the *IL28B* gene are the most important determinant of virological response to PEG-IFN/RBV therapy [Ge et al., 2009; Suppiah et al., 2009; Tanaka et al., 2009; Rauch et al., 2010]. On the other hand, among patients with a virological response, the probability of a sustained virological response decreases when the patients become intolerant to therapy because of RBV-induced hemolytic anemia and receive a reduced dose of RBV [McHutchison et al., 2002; Kurosaki et al., 2012]. Genome-wide association studies have shown that variants of the inosine triphosphatase (*ITPA*) gene protect against hemolytic anemia [Fellay et al., 2010; Tanaka et al., 2011]. These variants are associated with a reduced requirement for an anemia-related dose reduction of RBV [Sakamoto et al., 2010; Thompson et al., 2010a; Kurosaki et al., 2011d; Seto et al., 2011]. However, factors other than the *ITPA* gene also contribute to the risk of severe anemia or RBV dose reduction [Ochi et al., 2010; Kurosaki et al., 2011d] and the results of studies on the impact of the *ITPA* genotype on treatment outcome are inconsistent [Ochi et al., 2010; Sakamoto et al., 2010; Thompson et al., 2010a, 2011; Kurosaki et al., 2011d].

Data mining is a novel statistical method used to extract relevant factors from a plethora of factors and combine them to predict the incidence of the outcome of interest [Breiman et al., 1980]. Decision tree analysis, a primary component of data mining analysis, has found medical applications recently [Averbook et al., 2002; Miyaki et al., 2002; Baquerizo et al., 2003; Leiter et al., 2004; Garzotto et al., 2005; Zlobec et al., 2005; Valera et al., 2007] and has proven to be a useful tool for predicting therapeutic efficacy [Kurosaki et al., 2010, 2011a,b,c, 2012] and adverse events [Hiramatsu et al., 2011] in patients with chronic hepatitis C treated with PEG-IFN/RBV therapy. Because the results of data mining analysis are presented as a flowchart [LeBlanc and Crowley, 1995], they are easily understandable and usable by clinicians lacking a detailed knowledge of statistics.

For the general application of this genetic information in clinical practice, this study aimed to construct a predictive model of severe anemia using the *ITPA* genotype, together with other relevant factors. This study also aimed to analyze the impact of the risk of anemia on treatment outcome, after adjustment for the *IL28B* genotype. These analyses were carried out at baseline and during therapy, when the early virological response became evident.

MATERIALS AND METHODS

Patients

Data were collected from a total of 446 genotype 1b chronic hepatitis C patients who were treated with PEG-IFN alpha and RBV at five hospitals and universities throughout Japan. The inclusion criteria were: (1) infection by hepatitis C genotype 1b; (2) no

co-infection with hepatitis B virus or human immunodeficiency virus; (3) no other causes of liver disease such as autoimmune hepatitis and primary biliary cirrhosis; and (4) availability of DNA for the analysis of the genetic polymorphisms of *IL28B* and *ITPA*. Patients received PEG-IFN alpha-2a (180 µg) and 2b (1.5 µg/kg) subcutaneously every week and a daily weight-adjusted dose of RBV (600 mg for patients weighing <60 kg, 800 mg for patients weighing 60–80 kg, and 1,000 mg for patients weighing >80 kg) for 48 weeks. Dose reduction or discontinuation of PEG-IFN and RBV was primarily based on the recommendations on the package inserts and the discretion of the physicians at each university and hospital. The standard duration of therapy was set at 48 weeks. No patient received erythropoietin or other growth factors for the treatment of anemia. Written informed consent was obtained from each patient, and the study protocol conformed to the ethical guidelines of the Declaration of Helsinki and was approved by the institutional ethics review committees.

Laboratory Tests

Blood samples obtained before therapy were analyzed for hematologic data, blood chemistry, and HCV RNA. Genetic polymorphisms in SNPs of the *ITPA* gene (rs1127354) and the *IL28B* gene (rs8099917) were determined using ABI TaqMan Probes (Applied Biosystems, Carlsbad, CA) and the DigiTag2 assay, respectively. Baseline creatinine clearance (CLcr) levels were calculated using the formula of Cockcroft and Gault [1976]: for males, $CLcr = [(140 - \text{age in years}) \times \text{body weight in kg}] \div (72 \times \text{serum creatinine in mg/dl})$ and for females, $CLcr = 0.85 \times [(140 - \text{age in years}) \times \text{body weight in kg}] \div (72 \times \text{serum creatinine in mg/dl})$. The stage of liver fibrosis was scored according to the METAVIR scoring system: F0 (no fibrosis), F1 (mild fibrosis: portal fibrosis without septa), F2 (moderate fibrosis: few septa), F3 (severe fibrosis: numerous septa without cirrhosis), and F4 (cirrhosis). A rapid virological response was defined as undetectable HCV RNA by qualitative PCR with a lower detection limit of 50 IU/ml (Amplior, Roche Diagnostic Systems, Pleasanton, CA) at week 4 of therapy and a complete early virological response was defined as undetectable HCV RNA at week 12. A sustained virological response was defined as undetectable HCV RNA at 24 weeks after completion of therapy. Severe anemia was defined as hemoglobin (Hb) <10 g/dl.

Statistical Analysis

Database for analysis included the following variables: age, sex, body mass index, serum aspartate aminotransferase (AST) levels, alanine aminotransferase (ALT) levels, gamma-glutamyltransferase (GGT) levels, creatinine levels, CLcr, Hb, platelet count, serum levels of HCV RNA, and the stage of liver fibrosis

TABLE I. Patients' Baseline Characteristics

Age (years)	58.6	(9.6)
Gender: male (n, %)	185	(42%)
Body mass index (kg/m ²)	23.1	(3.7)
AST (IU/L)	59.9	(53.8)
ALT (IU/L)	69.8	(53.8)
GGT (IU/L)	48.5	(41.6)
Creatinine (mg/dl)	0.7	(0.2)
Creatinine clearance (ml/min)	89.5	(23.0)
Hemoglobin (g/dl)	14	(1.4)
Platelet count (10 ⁹ /L)	154.5	(52.1)
HCV RNA > 600,000 IU/ml (n, %)	354	(79%)
Liver fibrosis: F3-4 (n, %)	108	(24%)
Initial ribavirin dose (n, %)		
600 mg/day	300	(67%)
800 mg/day	138	(31%)
1,000 mg/day	9	(2%)
Pegylated interferon (n, %)		
alpha2a 180 mcg	58	(13%)
alpha2b 1.5 mcg/kg	388	(87%)
ITPA rs1127354: CC (n, %)	317	(71%)
IL28B rs809917: TT (n, %)	311	(70%)

AST, aspartate aminotransferase; ALT, alanine aminotransferase; GGT, gamma-glutamyltransferase. Data expressed as mean (standard deviation) unless otherwise mentioned.

(Table I). Based on these data set, a model for predicting the risk of developing severe anemia was constructed by data mining analysis using the IBM-SPSS Modeler 13 as described previously [Kurosaki et al., 2010, 2011a,b,c; Hiramatsu et al., 2011]. Briefly, the software was used to explore the database automatically to search for optimal predictors that discriminated most efficiently patients with severe anemia from those without. The software also determined the optimal cutoff values of each predictor. Patients were divided into two groups according to the predictor and each of the two groups was repeatedly divided in the same way until no significant factor remained or 20 or fewer patients were in a group.

The incidence of severe anemia, the total dose of RBV, and treatment outcome were compared between groups with high and low risks of anemia. On univariate analysis, Student's *t*-test was used for continuous variables, and Fisher's exact test was used for categorical data. Logistic regression was used for multivariate analysis. *P* values of <0.05 were considered significant. SPSS Statistics 18 was used for these analyses.

RESULTS

Predictive Model of Severe Anemia

The incidence of severe anemia in the whole cohort was 49% (Fig. 1). The best predictor of severe anemia was the baseline Hb concentration. Patients with a low baseline Hb concentration (<14 g/dl) were more likely to develop severe anemia (67%) than those with a higher Hb (>14 g/dl) (34%). The second best predictor for those patients with a baseline Hb <14.0 g/dl was CLcr. Patients with a CLcr below 90 ml/min had

the highest incidence of severe anemia (76%). In those with a CLcr above >90 ml/min the incidence of severe anemia was 57% in patients with the CC allele of the *ITPA* gene while it was 37% in patients with the CA or AA allele. On the other hand, the second best predictor for those patients with a baseline Hb concentration above 14 g/dl was the *ITPA* genotype. Patients with the AA or AC allele had the lowest incidence of anemia (17%). For those with the *ITPA* CC allele, CLcr was the third best predictor; the optimal cutoff value was 85 ml/min for this group. The incidence of severe anemia was 49% in patients with a CLcr below 85 ml/min while it was 32% in those with a CLcr above 85 ml/min.

Following this analysis, the patients were divided into six groups, with the incidence of severe anemia ranging from 17% to 76%. Three groups with two predictors, having an incidence of anemia >40%, were defined as the high-risk group and the remainder were defined as the low-risk group. The incidence of severe anemia was higher in the high-risk group than the low-risk group (65% vs. 28%, *P* = 0.029) (Fig. 2). Comparison of the *ITPA* genotype and the predictive model showed that the sensitivity for the prediction of severe anemia was similar (75.9% vs. 76.4%) but the specificity of the predictive model was greater (33.6% vs. 59.3%).

The Risk of Anemia Impacts on Sustained Virological Responses by Patients Who Achieved an Early Virological Response

The impact of *IL28B* genotype, *ITPA* genotype, and risk group of anemia on the rate of sustained virological response was studied at baseline and week 12. At baseline, patients with the TT allele of the *IL28B* gene had a significantly higher rate of sustained virological response than those with the TG or GG allele (43% vs. 10%, *P* < 0.0001), the high-risk group for anemia had a significantly lower rate of sustained virological response than the low-risk group (28% vs. 40%, *P* = 0.011), and the *ITPA* genotype was not associated with a sustained virological response (Fig. 3A–C). At week 4, patients with rapid virological response had a high rate of sustained virological response, irrespective of the *IL28B* genotype (TT vs. TG/GG; 97% vs. 100%, *P* = 1.000), the *ITPA* genotype (CC vs. CA/AA; 95% vs. 100%, *P* = 1.000), and the risk of anemia (high vs. low; 95% vs. 100%, *P* = 1.000). Among the patients who did not achieve a rapid virological response, those with the *IL28B* TT allele had a significantly higher rate of sustained virological response than those with the TG or GG allele (38% vs. 8%, *P* < 0.0001), and the high-risk group for anemia had a significantly lower rate of sustained virological response than the low-risk group (24% vs. 35%, *P* = 0.015). At week 12, in patients who achieved a complete early virological response, the *IL28B* genotype was not associated with a sustained virological response, while the high-risk group for anemia had a

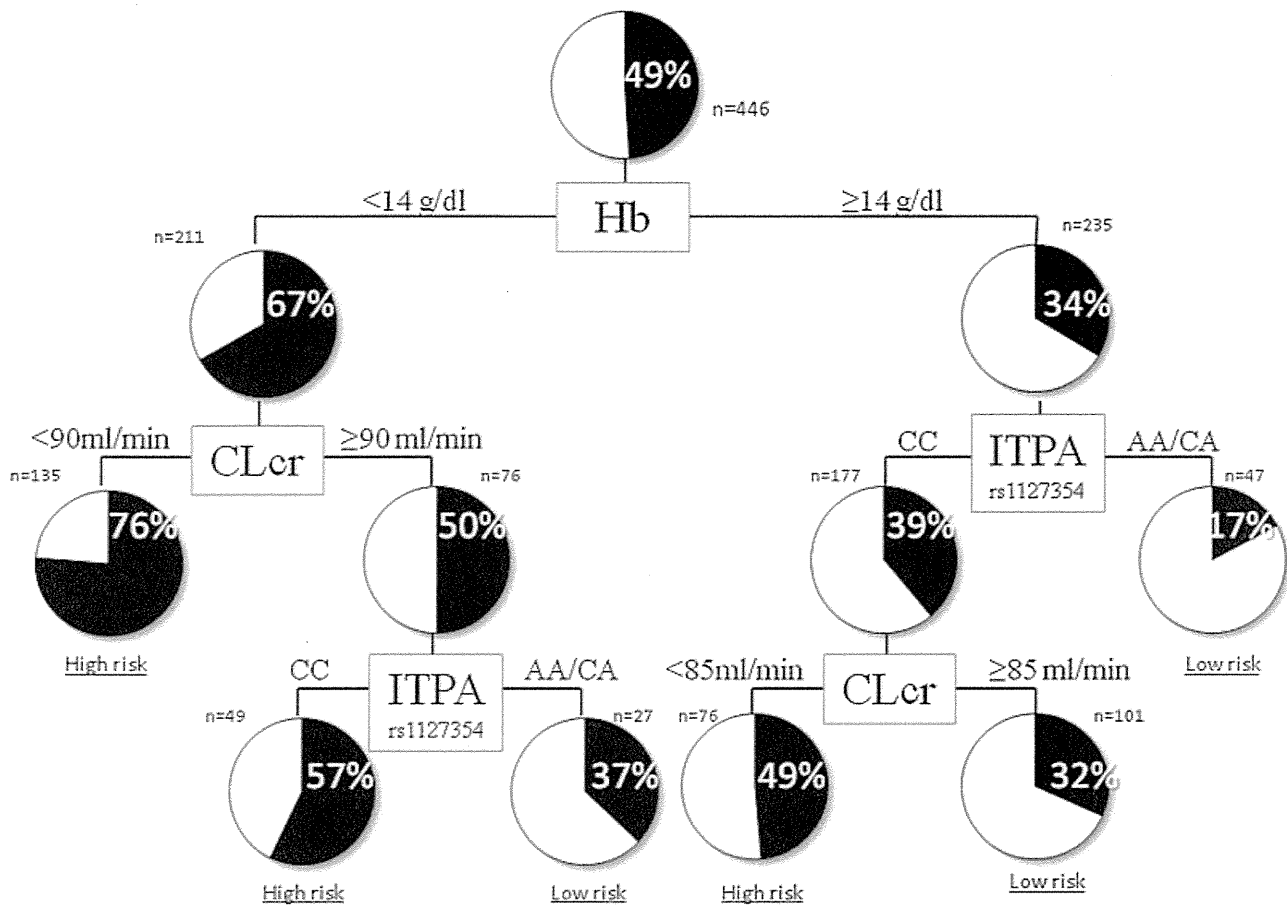


Fig. 1. The predictive model for severe anemia. The boxes indicate the factors used to differentiate patients and the cutoff values for the different groups. The pie charts indicate the rate of severe anemia (Hb <10.0 g/dl) for each group of patients, after differentiation. Terminal groups of patients differentiated by analysis are classified as at high risk if the rate is >40% and low risk if the rate is <40%. ITPA, inosine triphosphatase; CLcr, creatinine clearance; Hb, hemoglobin.

significantly lower rate of sustained virological response than the low-risk group (59% vs. 76%, $P = 0.013$) (Fig. 3D–F). In patients who did not achieve a complete early virological response, the *IL28B* genotype was a significant predictor of a sustained virological response (TT vs. TG/GG; 14% vs. 2%, $P < 0.0001$) but a high risk for anemia was not (high vs. low; 10% vs. 6%, $P = 0.361$).

From multivariate analysis (Table II), the *IL28B* genotype was the most important predictor of a sustained virological response at baseline [adjusted odds ratio 9.88 (95% confidence interval 5.01–19.48), $P < 0.0001$], along with female sex [0.42 (0.26–0.68), $P < 0.0001$], platelet count [1.09 (1.04–1.15), $P < 0.0001$], advanced fibrosis [0.49 (0.27–0.91), $P = 0.024$], and baseline HCV RNA load [4.14 (2.27–7.55), $P < 0.0001$]. At week 4, in patients without a rapid virological response, the *IL28B* genotype remained the most important predictor of a sustained virological response [7.16 (3.60–14.25), $P < 0.0001$], along with female sex and platelet count. At week 12, in patients with a complete early virological response, the risk of anemia was an independent and significant

predictor of a sustained virological response [0.47 (0.24–0.91), $P = 0.026$], together with the platelet count and HCV RNA load, but the *IL28B* genotype was not associated with a sustained virological response. In patients without a complete early virological response, the *IL28B* genotype was a predictor of a sustained virological response [9.13 (2.02–41.3), $P = 0.004$] along with the platelet count. Thus, *IL28B* was a significant predictor of a sustained virological response at baseline and among virological non-responders at weeks 4 and 12. On the other hand, once a complete early virological response was achieved, the *IL28B* genotype was no longer associated with a sustained virological response but the risk of anemia was an independent predictor of a sustained virological response.

The Risk of Anemia, RBV Dose, and Treatment Outcome in Patients With a Complete Early Virological Response

Patients who achieved a complete early virological response were stratified according to adherence to

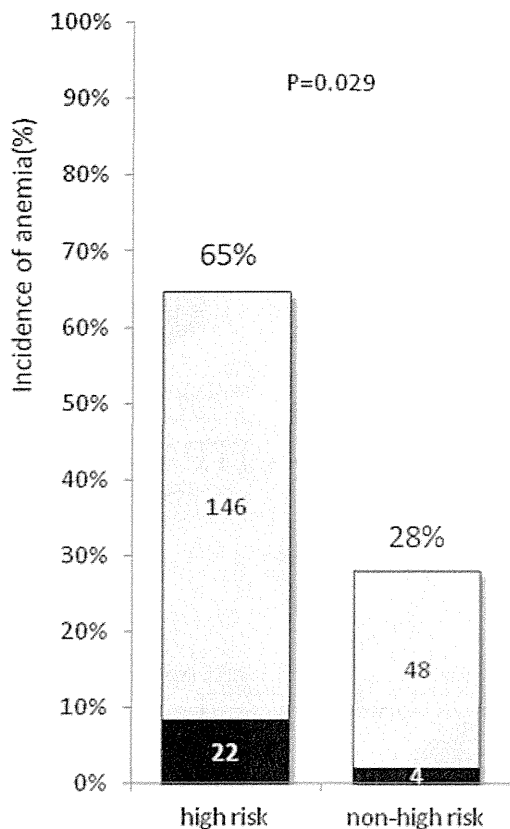


Fig. 2. The incidence of severe anemia stratified by risk of anemia. The incidence of anemia during therapy is shown for each group of patients at high and low risk of anemia. The black and white bars represent the percentages of patients with Hb concentrations below 8.5 g/dl and above 10 g/dl, respectively.

RBV ($\leq 40\%$, 41–60%, 61–80%, and $>80\%$), which showed that patients with a high risk of anemia were predominantly in subgroups with a lower adherence to RBV ($\leq 40\%$, 41–60%, and 61–80%), whereas patients with a low risk of anemia were predominantly in subgroups with a higher adherence to RBV ($>80\%$) (Fig. 4, upper panel). The percentage of patients who received $>80\%$ of the planned dose of RBV was significantly higher in the low-risk group for anemia than in the high-risk group (74% vs. 55%, $P < 0.0001$).

Within the groups with high and low risks of anemia, there was a stepwise increase in the rate of sustained virological response according to the increase in adherence to RBV (Fig. 4, lower panel). The rate of sustained virological response was higher in patients who received $>80\%$ of the planned dose of RBV than those who received less, for both high-risk patients (71% vs. 47%, $P = 0.016$) and low-risk patients (81% vs. 60%, $P = 0.072$). Within the same subgroup of RBV adherence, however, the rate of sustained virological response did not differ between patients with a high risk and a low risk of anemia. Taken together, these results suggest that patients with a high risk of anemia have a disadvantage because they are likely

to be intolerant to RBV, leading to reduced adherence to RBV throughout the 48 weeks of therapy and a reduced rate of sustained virological response. However, if $>80\%$ adherence to RBV could be obtained, the rate of sustained virological response would increase by 24%.

DISCUSSION

This study confirmed previous reports that the *IL28B* genotype is the most significant predictor of a sustained virological response to PEG-IFN plus RBV therapy in chronic hepatitis C patients at baseline [Ge et al., 2009; Suppiah et al., 2009; Tanaka et al., 2009; Rauch et al., 2010; Kurosaki et al., 2011c] and at week 4 [Thompson et al., 2010b], but it had no impact on the rate of sustained virological response among those patients who achieved a complete early virological response [Thompson et al., 2010b; Kurosaki et al., 2011c]. In contrast, the risk of anemia, assessed by the combination of the *ITPA* genotype, baseline Hb concentration, and baseline CLcr, was found to be associated with a sustained virological response in patients who achieved a complete early virological response. Generally, a complete early virological response is the hallmark of a high probability of a sustained virological response, but the rate of sustained virological responses in patients who achieved a complete early virological response and had a high risk of anemia was as low as 59%. This reduced rate of sustained virological response in these patients was attributable to poor adherence to RBV throughout the 48 weeks of therapy. Because administration of $>80\%$ of the planned RBV dose increased the rate of sustained virological response by 24%, it may be postulated that personalizing the treatment schedule to achieve a sufficient dose of RBV, such as extension of treatment duration, may improve sustained virological response rates in these patients. Clearly, this postulate needs to be confirmed in future study. Thus, the findings presented here may have the potential to support selection of the optimum, personalized treatment strategy for an individual patient, based on the risk of anemia.

The degree of hemolytic anemia caused by RBV varies among individuals. A reduction of the Hb concentration early during therapy predicts the likely development of severe anemia [Hiramatsu et al., 2008, 2011] but there are no reliable predictors at baseline. A breakthrough came from the results of a genome-wide association study that revealed that variants of the *ITPA* gene are protective against hemolytic anemia [Fellay et al., 2010]. The *ITPA* genotype has been shown repeatedly to be associated with the degree of hemolytic anemia and dose reduction of RBV [Fellay et al., 2010; Sakamoto et al., 2010; Thompson et al., 2010a; Seto et al., 2011; Tanaka et al., 2011; Kurosaki et al., 2011d]. However, factors other than the *ITPA* gene, such as baseline Hb concentrations [Ochi et al., 2010; Kurosaki et al., 2011d], platelet counts [Ochi

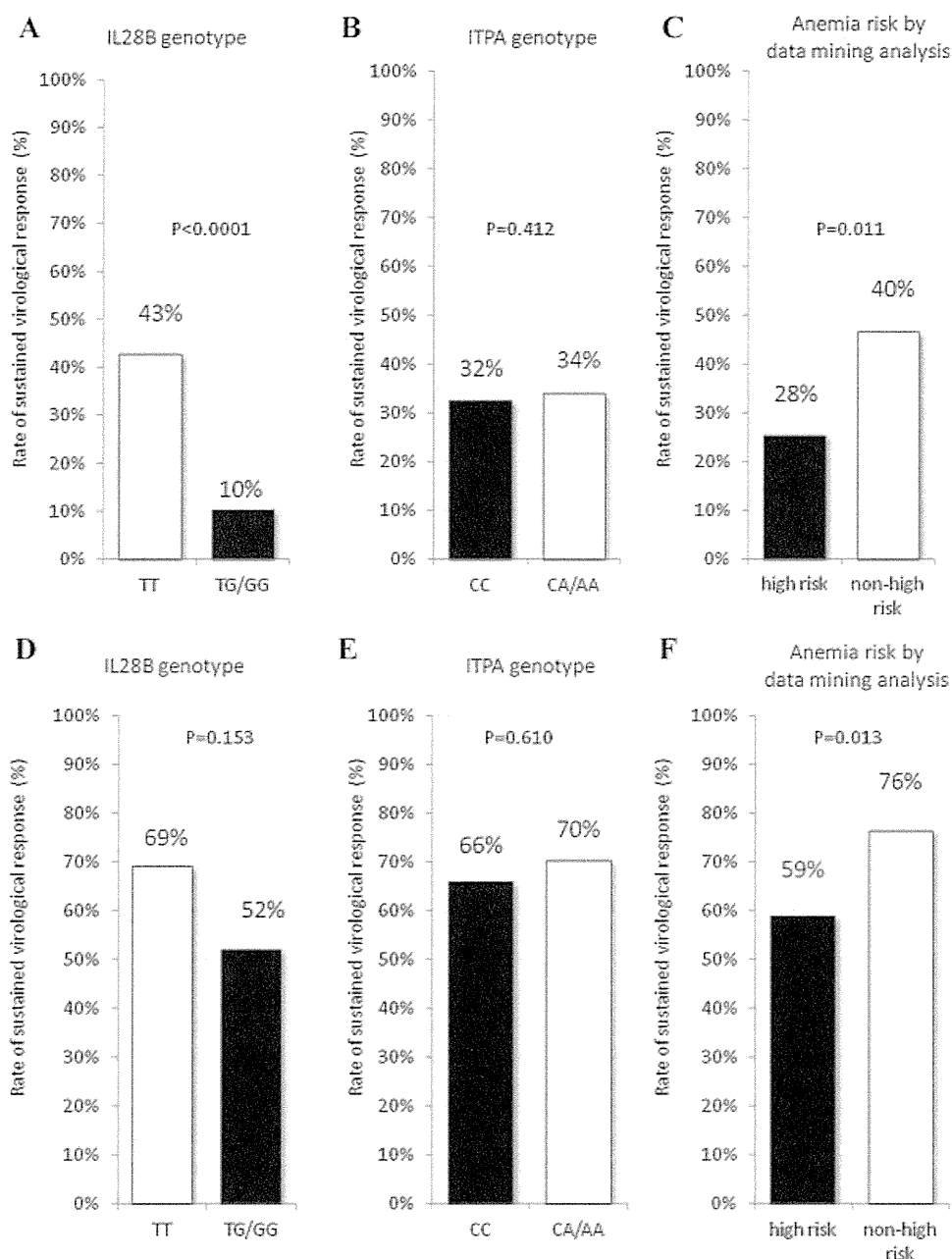


Fig. 3. Rates of sustained virological responses at baseline and among those with a virological response at week 12. The impacts of *IL28B* genotype, *ITPA* genotype, and risk group of anemia on the rate of sustained virological response were studied at baseline (A–C) and among those with complete early virological responses (defined as undetectable HCV RNA at week 12) (D–F). At baseline, those with the TT allele of the *IL28B* gene had a significantly higher rate of sustained virological response than those with the TG or GG allele and the group at high-risk of anemia had a significantly lower rate of sustained virological response than the low-risk group. Among patients with complete early virological responses, the *IL28B* genotype was not associated with a sustained virological response, while the group at high-risk of anemia had a significantly lower rate of sustained virological response than the low-risk group.

et al., 2010], and CLcr [Kurosaki et al., 2011d], also contribute to the risk of severe anemia or RBV dose reduction. In the present study, the predictive model of anemia based on the data mining analysis selected the *ITPA* genotype, baseline Hb concentration, and

baseline CLcr as predictive factors and identified six subgroups of patients with a variable rate of severe anemia, ranging from 17% to 76%. The specificity of the prediction of severe anemia was improved by 25.7% in the predictive model, compared to *ITPA*

TABLE II. Logistic Regression Analysis for Factors Associated With Sustained Virological Response at Baseline, Week 4 and Week 12

	Multi-variable		
	Odds	95% CI	P-value
Pre-treatment			
Sex: female	0.42	0.26–0.68	<0.0001
Platelet (10 ⁹ /L)	1.09	1.04–1.15	<0.0001
Fibrosis: F3-4	0.49	0.27–0.91	0.024
HCV RNA: <600,000 IU/L	4.14	2.27–7.55	<0.0001
IL28B rs8099917: TT	9.88	5.01–19.48	<0.0001
At week 4			
Non-RVR patients			
Sex: female	0.45	0.28–0.72	0.001
Platelet (10 ⁹ /L)	1.10	1.05–1.16	0.000
IL28B rs8099917: TT	7.16	3.60–14.25	<0.0001
At week 12			
cEVR patients			
Platelet (10 ⁹ /L)	1.09	1.02–1.17	0.015
HCV RNA: <600,000 IU/L	3.21	1.39–7.55	0.007
High-risk of anemia ^a	0.47	0.24–0.91	0.026
At week 12			
Non-cEVR patients			
Platelet (10 ⁹ /L)	1.11	1.02–1.21	0.017
IL28B rs8099917: TT	9.13	2.02–41.3	0.004

RVR: rapid virological response, defined as undetectable HCV RNA at week 4.

cEVR: complete early virological response, defined as undetectable HCV RNA at week 12.

^aHigh-risk of anemia defined by decision tree analysis includes the following groups: (1) baseline hemoglobin <14.0 g/dl and creatinine clearance <90 ml/min, (2) baseline hemoglobin <14.0 g/dl, creatinine clearance ≥90 ml/min and ITPA rs1127354 genotype CC, and (3) baseline hemoglobin ≥14.0 g/dl, ITPA rs1127354 genotype CC, and creatinine clearance <85 ml/min.

genotyping alone. Because hemolytic anemia induced by RBV is one of the major adverse events leading to premature termination of therapy [Fried et al., 2002], a method to predict the risk of severe anemia before treatment is important clinically. A predictive model of anemia may have the potential to support individualized treatment strategies; patients at high risk of anemia may be tested intensively for anemia or may be candidates for erythropoietin therapy, whereas those with a low risk of anemia may be treated with a higher dose of RBV. Prediction of anemia will remain important in the era of direct antiviral agents for chronic hepatitis C, because these newer therapies still require RBV and PEG-IFN in combination, and the degree of anemia complicating these therapies may be even greater than with the current combination therapy [McHutchison et al., 2009; Kwo et al., 2010].

Studies of the impact of the *ITPA* genotype on treatment outcome have produced conflicting results. Previous studies of American [Thompson et al., 2010a] and Italian [Thompson et al., 2011] cohorts did not find any association between the *ITPA* genotype and treatment outcome, whereas a marginal difference was observed in a report from Japan [Ochi et al., 2010]. Moreover, with a subgroup analysis of Japanese patients, the variant of the *ITPA* gene was

associated with a sustained virological response in patients with the *IL28B* major genotype [Kurosaki et al., 2011d], in patients infected with HCV other than genotype 1 [Sakamoto et al., 2010], and in patients with pre-treatment Hb concentrations between 13.5 and 15 g/dl [Azakami et al., 2011]. These inconsistent results may be because the impact of anemia may be greater on a cohort of aged patients, such as in Japan. Another reason may be that the *ITPA* genotype is not the sole determinant of anemia; the *ITPA* genotype alone was not associated with treatment outcome in the present study but a high-risk of anemia, defined by the combination of the *ITPA* genotype, baseline Hb concentration, and baseline CLcr, was associated with sustained virological responses by patients with complete early virological responses, even after adjustment for the *IL28B* genotype and other relevant factors. This is in contrast to the finding that the *IL28B* genotype is an independent and significant predictor at baseline of a sustained virological response by patients without a rapid virological response and those without a complete early virological response, but not those with a complete early virological response. These results indicate that the *IL28B* genotype could be used to predict a sustained virological response at baseline or during therapy in patients in whom HCV RNA has not yet become undetectable, but it has no predictive value in patients in whom HCV RNA has become undetectable. The risk of anemia may be used to predict sustained virological responses in a selected subgroup of patients who achieve a complete early virological response.

Patients who received more than 80% of the planned dose of PEG-IFN or RBV had a higher rate of sustained virological responses than those who received a lower cumulative dose [McHutchison et al., 2002; Davis et al., 2003]. Patients who achieve a complete early virological response usually have a good chance of a sustained virological response and the treatment duration is not extended beyond 48 weeks. However, reduced adherence to drugs in these patients was related to relapse after the completion of 48 weeks of therapy [Hiramatsu et al., 2009; Kurosaki et al., 2012]. In the present study, the rate of sustained virological response was 59% in patients who achieved a complete early virological response but had a high risk of anemia, 17% lower than in patients with a low risk of anemia. However, there was a step-wise increase in the rate of sustained virological response according to the increase in adherence to RBV, and the rate of sustained virological response was higher in high-risk patients who received >80% of the planned dose of RBV (71% vs. 47%). This 24% increase in sustained virological response was observed among the patients in the present study who received 48 weeks of treatment. These findings suggest that receiving a sufficient RBV dose is essential for patients with a complete early virological response to attain a sustained virological response and that the treatment strategy should be personalized for patients with a

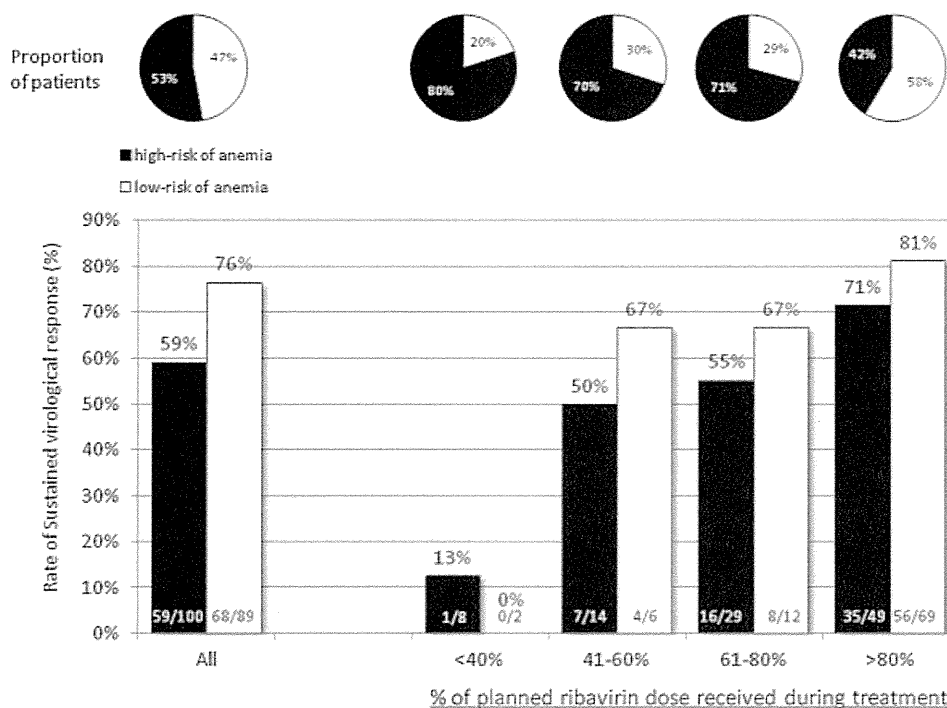


Fig. 4. The impact of risk of anemia and RBV dose on treatment outcome after a complete early virological response. Patients with complete early virological responses were divided into subgroups according to their adherence to RBV: $\leq 40\%$, 41–60%, 61–80%, and $>80\%$. For each subgroup, the proportion of patients with a high risk and a low risk of anemia is shown in the upper panel by pie charts, and the rates of sustained virological responses, stratified by high risk and low risk of anemia, are shown in the lower panel by bar graphs. The black and white bars or charts represent patients with high and low risks of anemia, respectively.

high risk of anemia to extend the duration of treatment, even those patients with a complete early virological response, to obtain $>80\%$ adherence to RBV.

In conclusion, the combination of the *ITPA* genotype, baseline Hb concentration, and baseline CLcr could be used as a pre-treatment predictor of anemia. The risk of anemia thus identified is associated with adherence to RBV and impacts on the treatment outcome of patients who achieve a complete early virological response. This is in contrast to the major role of the *IL28B* genotype in the prediction of sustained virological responses at baseline and among non-responders at weeks 4 and 12. Patients who achieve a complete early virological response generally have a high probability of a sustained virological response but those who have a high risk of anemia have a high rate of relapse because of reduced adherence to RBV. To improve the rate of sustained virological responses in these patients, it may be postulated that the treatment schedule may be personalized to obtain $>80\%$ adherence to RBV. Clearly, this postulate needs to be confirmed in a future study.

REFERENCES

Averbook BJ, Fu P, Rao JS, Mansour EG. 2002. A long-term analysis of 1018 patients with melanoma by classic Cox regression and tree-structured survival analysis at a major referral

center: Implications on the future of cancer staging. *Surgery* 132:589–602.

Azakami T, Hayes CN, Sezaki H, Kobayashi M, Akuta N, Suzuki F, Kumada H, Abe H, Miki D, Tsuge M, Imamura M, Kawakami Y, Takahashi S, Ochi H, Nakamura Y, Kamatani N, Chayama K. 2011. Common genetic polymorphism of *ITPA* gene affects ribavirin-induced anemia and effect of peg-interferon plus ribavirin therapy. *J Med Virol* 83:1048–1057.

Baquerizo A, Anselmo D, Shackleton C, Chen TW, Cao C, Weaver M, Gornbein J, Geevarghese S, Nissen N, Farmer D, Demetriou A, Busutil RW. 2003. Phosphorus as an early predictive factor in patients with acute liver failure. *Transplantation* 75:2007–2014.

Breiman LJH, Friedman RA, Olshen CJ, Stone CM. 1980. Classification and regression trees. Calif: Wadsworth.

Cockcroft DW, Gault MH. 1976. Prediction of creatinine clearance from serum creatinine. *Nephron* 16:31–41.

Davis GL, Wong JB, McHutchison JG, Manns MP, Harvey J, Albrecht J. 2003. Early virologic response to treatment with peginterferon alfa-2b plus ribavirin in patients with chronic hepatitis C. *Hepatology* 38:645–652.

Fellay J, Thompson AJ, Ge D, Gumbs CE, Urban TJ, Shianna KV, Little LD, Qiu P, Bertelsen AH, Watson M, Warner A, Muir AJ, Brass C, Albrecht J, Sulkowski M, McHutchison JG, Goldstein DB. 2010. *ITPA* gene variants protect against anaemia in patients treated for chronic hepatitis C. *Nature* 464: 405–408.

Fried MW, Shiffman ML, Reddy KR, Smith C, Marinos G, Goncalves FL, Jr., Haussinger D, Diago M, Carosi G, Dhumeaux D, Craxi A, Lin A, Hoffman J, Yu J. 2002. Peginterferon alfa-2a plus ribavirin for chronic hepatitis C virus infection. *N Engl J Med* 347:975–982.

Garzotto M, Park Y, Mongoue-Tchokote S, Bledsoe J, Peters L, Blank BH, Austin D, Beer TM, Mori M. 2005. Recursive partitioning for

- risk stratification in men undergoing repeat prostate biopsies. *Cancer* 104:1911–1917.
- Ge D, Fellay J, Thompson AJ, Simon JS, Shianna KV, Urban TJ, Heinzen EL, Qiu P, Bertelsen AH, Muir AJ, Sulkowski M, McHutchison JG, Goldstein DB. 2009. Genetic variation in IL28B predicts hepatitis C treatment-induced viral clearance. *Nature* 461:399–401.
- Hiramatsu N, Kurashige N, Oze T, Takehara T, Tamura S, Kasahara A, Oshita M, Katayama K, Yoshihara H, Imai Y, Kato M, Kawata S, Tsubouchi H, Kumada H, Okanoue T, Kakumu S, Hayashi N. 2008. Early decline of hemoglobin can predict progression of hemolytic anemia during pegylated interferon and ribavirin combination therapy in patients with chronic hepatitis C. *Hepatology* 48:52–59.
- Hiramatsu N, Oze T, Yakushijiin T, Inoue Y, Igura T, Mochizuki K, Imanaka K, Kaneko A, Oshita M, Hagiwara H, Mita E, Nagase T, Ito T, Inui Y, Hijioka T, Katayama K, Tamura S, Yoshihara H, Imai Y, Kato M, Yoshida Y, Tatsumi T, Ohkawa K, Kiso S, Kanto T, Kasahara A, Takehara T, Hayashi N. 2009. Ribavirin dose reduction raises relapse rate dose-dependently in genotype 1 patients with hepatitis C responding to pegylated interferon alpha-2b plus ribavirin. *J Viral Hepat* 16:586–594.
- Hiramatsu N, Kurosaki M, Sakamoto N, Iwasaki M, Sakamoto M, Suzuki Y, Sugauchi F, Tamori A, Kakinuma S, Matsuura K, Izumi N. 2011. Pretreatment prediction of anemia progression by pegylated interferon alpha-2b plus ribavirin combination therapy in chronic hepatitis C infection: Decision-tree analysis. *J Gastroenterol* 46:1111–1119.
- Kim RW. 2002. Global epidemiology and burden of hepatitis C. *Microbes Infect* 4:1219–1225.
- Kurosaki M, Matsunaga K, Hirayama I, Tanaka T, Sato M, Yasui Y, Tamaki N, Hosokawa T, Ueda K, Tsuchiya K, Nakanishi H, Ikeda H, Itakura J, Takahashi Y, Asahina Y, Higaki M, Enomoto N, Izumi N. 2010. A predictive model of response to peginterferon ribavirin in chronic hepatitis C using classification and regression tree analysis. *Hepatology* 40:251–260.
- Kurosaki M, Sakamoto N, Iwasaki M, Sakamoto M, Suzuki Y, Hiramatsu N, Sugauchi F, Tamori A, Nakagawa M, Izumi N. 2011a. Sequences in the interferon sensitivity-determining region and core region of hepatitis C virus impact pretreatment prediction of response to PEG-interferon plus ribavirin: Data mining analysis. *J Med Virol* 83:445–452.
- Kurosaki M, Sakamoto N, Iwasaki M, Sakamoto M, Suzuki Y, Hiramatsu N, Sugauchi F, Yatsuhashi H, Izumi N. 2011b. Pretreatment prediction of response to peginterferon plus ribavirin therapy in genotype 1 chronic hepatitis C using data mining analysis. *J Gastroenterol* 46:401–409.
- Kurosaki M, Tanaka Y, Nishida N, Sakamoto N, Enomoto N, Honda M, Sugiyama M, Matsuura K, Sugauchi F, Asahina Y, Nakagawa M, Watanabe M, Sakamoto M, Maekawa S, Sakai A, Kaneko S, Ito K, Masaki N, Tokunaga K, Izumi N, Mizokami M. 2011c. Pretreatment prediction of response to pegylated-interferon plus ribavirin for chronic hepatitis C using genetic polymorphism in IL28B and viral factors. *J Hepatology* 54:439–448.
- Kurosaki M, Tanaka Y, Tanaka K, Suzuki Y, Hoshioka Y, Tamaki N, Kato T, Yasui Y, Hosokawa T, Ueda K, Tsuchiya K, Kuzuya T, Nakanishi H, Itakura J, Takahashi Y, Asahina Y, Matsuura K, Sugauchi F, Enomoto N, Nishida N, Tokunaga K, Mizokami M, Izumi N. 2011d. Relationship between genetic polymorphisms of the inosine triphosphatase gene and anemia or outcome after treatment with pegylated-interferon and ribavirin. *Antivir Ther* 16:685–694.
- Kurosaki M, Hiramatsu N, Sakamoto M, Suzuki Y, Iwasaki M, Tamori A, Matsuura K, Kakinuma S, Sugauchi F, Sakamoto N, Nakagawa M, Yatsuhashi H, Izumi N. 2012. Age and total ribavirin dose is an independent predictor of relapse among early virological responders to peg-interferon plus ribavirin therapy in chronic hepatitis C revealed by data mining analysis. *Antivir Ther* 17:35–43.
- Kwo PY, Lawitz EJ, McCone J, Schiff ER, Vierling JM, Pound D, Davis MN, Galati JS, Gordon SC, Ravendhran N, Rossaro L, Anderson FH, Jacobson IM, Rubin R, Koury K, Pedicone LD, Brass CA, Chaudhri E, Albrecht JK. 2010. Efficacy of boceprevir, an NS3 protease inhibitor, in combination with peginterferon alpha-2b and ribavirin in treatment-naïve patients with genotype 1 hepatitis C infection (SPRINT-1): An open-label, randomised, multicentre phase 2 trial. *Lancet* 376:705–716.
- LeBlanc M, Crowley J. 1995. A review of tree-based prognostic models. *Cancer Treat Res* 75:113–124.
- Leiter U, Buettner PG, Eigentler TK, Garbe C. 2004. Prognostic factors of thin cutaneous melanoma: An analysis of the Central Malignant Melanoma Registry of the German Dermatological Society. *J Clin Oncol* 22:3660–3667.
- Manns MP, McHutchison JG, Gordon SC, Rustgi VK, Shiffman M, Reindollar R, Goodman ZD, Koury K, Ling M, Albrecht JK. 2001. Peginterferon alfa-2b plus ribavirin compared with interferon alfa-2b plus ribavirin for initial treatment of chronic hepatitis C: A randomised trial. *Lancet* 358:958–965.
- McHutchison JG, Manns M, Patel K, Goyard T, Lindsay KL, Trepo C, Dienstag J, Lee WM, Mak C, Raynaud JJ, Albrecht JK. 2002. Adherence to combination therapy enhances sustained response in genotype-1-infected patients with chronic hepatitis C. *Gastroenterology* 123:1061–1069.
- McHutchison JG, Everson GT, Gordon SC, Jacobson IM, Sulkowski M, Kauffman R, McNair L, Alam J, Muir AJ. 2009. Telaprevir with peginterferon and ribavirin for chronic HCV genotype 1 infection. *N Engl J Med* 360:1827–1838.
- Miyaki K, Takei I, Watanabe K, Nakashima H, Omae K. 2002. Novel statistical classification model of type 2 diabetes mellitus patients for tailor-made prevention using data mining algorithm. *J Epidemiol* 12:243–248.
- Ochi H, Maekawa T, Abe H, Hayashida Y, Nakano R, Kubo M, Tsunoda T, Hayes CN, Kumada H, Nakamura Y, Chayama K. 2010. Inosine triphosphate pyrophosphatase polymorphism affects ribavirin-induced anemia and outcomes of therapy—A genome-wide study of Japanese hepatitis C virus patients. *Gastroenterology* 139:1190–1197.
- Rauch A, Kutalik Z, Descombes P, Cai T, Di Iulio J, Mueller T, Bochud M, Battagay M, Bernasconi E, Borovicka J, Colombo S, Cerny A, Dufour JF, Furrer H, Gunthard HF, Heim M, Hirschel B, Malinverni R, Moradpour D, Mollhaupt B, Witteck A, Beckmann JS, Berg T, Bergmann S, Negro F, Telenti A, Bochud PY. 2010. Genetic variation in IL28B is associated with chronic hepatitis C and treatment failure: A genome-wide association study. *Gastroenterology* 138:1338–1345.
- Sakamoto N, Tanaka Y, Nakagawa M, Yatsuhashi H, Nishiguchi S, Enomoto N, Azuma S, Nishimura-Sakurai Y, Kakinuma S, Nishida N, Tokunaga K, Honda M, Ito K, Mizokami M, Watanabe M. 2010. ITPA gene variant protects against anemia induced by pegylated interferon-alpha and ribavirin therapy for Japanese patients with chronic hepatitis C. *Hepatology* 40:1063–1071.
- Seto WK, Tanaka Y, Liu K, Lai CL, Yuen MF. 2011. The effects of IL-28B and ITPA polymorphisms on treatment of hepatitis C virus genotype 6. *Am J Gastroenterol* 106:1007–1008.
- Suppiah V, Moldovan M, Ahlenstiel G, Berg T, Weltman M, Abate ML, Bassendine M, Spengler U, Dore GJ, Powell E, Riordan S, Sheridan D, Smedile A, Fragomeli V, Muller T, Bahlo M, Stewart GJ, Booth DR, George J. 2009. IL28B is associated with response to chronic hepatitis C interferon-alpha and ribavirin therapy. *Nat Genet* 41:1100–1104.
- Tanaka Y, Nishida N, Sugiyama M, Kurosaki M, Matsuura K, Sakamoto N, Nakagawa M, Korenaga M, Hino K, Hige S, Ito Y, Mita E, Tanaka E, Mochida S, Murawaki Y, Honda M, Sakai A, Hiasa Y, Nishiguchi S, Koike A, Sakaida I, Imamura M, Ito K, Yano K, Masaki N, Sugauchi F, Izumi N, Tokunaga K, Mizokami M. 2009. Genome-wide association of IL28B with response to pegylated interferon-alpha and ribavirin therapy for chronic hepatitis C. *Nat Genet* 41:1105–1109.
- Tanaka Y, Kurosaki M, Nishida N, Sugiyama M, Matsuura K, Sakamoto N, Enomoto N, Yatsuhashi H, Nishiguchi S, Hino K, Hige S, Itoh Y, Tanaka E, Mochida S, Honda M, Hiasa Y, Koike A, Sugauchi F, Kaneko S, Izumi N, Tokunaga K, Mizokami M. 2011. Genome-wide association study identified ITPA/DDR1 variants reflecting thrombocytopenia in pegylated interferon and ribavirin therapy for chronic hepatitis C. *Hum Mol Genet* 20:3507–3516.
- Thompson AJ, Fellay J, Patel K, Tillmann HL, Naggie S, Ge D, Urban TJ, Shianna KV, Muir AJ, Fried MW, Afdhal NH, Goldstein DB, McHutchison JG. 2010a. Variants in the ITPA gene protect against ribavirin-induced hemolytic anemia and decrease the need for ribavirin dose reduction. *Gastroenterology* 139:1181–1189.
- Thompson AJ, Muir AJ, Sulkowski MS, Ge D, Fellay J, Shianna KV, Urban T, Afdhal NH, Jacobson IM, Esteban R, Poordad F,

- Lawitz EJ, McCone J, Shiffman ML, Galler GW, Lee WM, Reindollar R, King JW, Kwo PY, Ghalib RH, Freilich B, Nyberg LM, Zeuzem S, Poynard T, Vock DM, Pieper KS, Patel K, Tillmann HL, Noviello S, Koury K, Pedicone LD, Brass CA, Albrecht JK, Goldstein DB, McHutchison JG. 2010b. Interleukin-28B polymorphism improves viral kinetics and is the strongest pretreatment predictor of sustained virologic response in genotype 1 hepatitis C virus. *Gastroenterology* 139:120–129 e118.
- Thompson AJ, Santoro R, Piazzolla V, Clark PJ, Naggie S, Tillmann HL, Patel K, Muir AJ, Shianna KV, Mottola L, Petruzzellis D, Romano M, Sogari F, Facciorusso D, Goldstein DB, McHutchison JG, Mangia A. 2011. Inosine triphosphatase genetic variants are protective against anemia during antiviral therapy for HCV2/3 but do not decrease dose reductions of RBV or increase SVR. *Hepatology* 53:389–395.
- Valera VA, Walter BA, Yokoyama N, Koyama Y, Iiai T, Okamoto H, Hatakeyama K. 2007. Prognostic groups in colorectal carcinoma patients based on tumor cell proliferation and classification and regression tree (CART) survival analysis. *Ann Surg Oncol* 14:34–40.
- Zlobec I, Steele R, Nigam N, Compton CC. 2005. A predictive model of rectal tumor response to preoperative radiotherapy using classification and regression tree methods. *Clin Cancer Res* 11:5440–5443.

Hepatitis C virus NS4B protein targets STING and abrogates RIG-I-mediated type-I interferon-dependent innate immunity

Sayuri Nitta^{1*}, Naoya Sakamoto^{1,2,6*§}, Mina Nakagawa^{1,2}, Sei Kakinuma¹, Kako Mishima¹, Akiko Kusano-Kitazume¹, Kei Kiyohashi¹, Miyako Murakawa¹, Yuki Nishimura-Sakurai¹, Seishin Azuma¹, Megumi Tasaka-Fujita¹, Yasuhiro Asahina^{1,2}, Mitsutoshi Yoneyama³, Takashi Fujita^{4,5}, and Mamoru Watanabe¹

¹Department of Gastroenterology and Hepatology and ²Department for Hepatitis Control,

Tokyo Medical and Dental University, Tokyo, Japan.

³Division of Molecular Immunology, Medical Mycology Research Center, Chiba University, Chiba, Japan.

⁴Laboratory of Molecular Genetics, Department of Genetics and Molecular Biology, Institute for Virus Research, Kyoto University, Kyoto, Japan.

⁵Laboratory of Molecular Cell Biology, Graduate School of Biostudies, Kyoto University, Kyoto, Japan

⁶ Department of Gastroenterology and Hepatology, Hokkaido University, Hokkaido, Japan

§Correspondence to:

Naoya Sakamoto, M. D., Ph. D.

Department of Gastroenterology and Hepatology

Tokyo Medical and Dental University

1-5-45, Yushima, Bunkyo-ku, Tokyo 113-8519, Japan.

This article has been accepted for publication and undergone full peer review but has not been through the copyediting, typesetting, pagination and proofreading process which may lead to differences between this version and the Version of Record. Please cite this article as an 'Accepted Article', doi: 10.1002/hep.26017