

京都府・京都市

京神

神戸市

本報告では

2007年10月から2010年12月の間のHIV抗体検査受検者の動向について、4半期毎の経時的な推移を示した。

- 表Ⅰ 各施設における受検件数報告および陽性判明報告^{*1}を基に作成し陽性判明割合を算出した。
- 表Ⅱ (回収率) 表Ⅰの受検件数報告を分母として5分間アンケート^{*2}の回収数から算出した。
(有効回収率) 表Ⅰの受検件数報告を分母として5分間アンケート^{*2}の回収数から算出した。
- 表Ⅲ 5分間アンケート^{*2}回答者の分析対象者における性別および性指向割合を示した。

【分析について】

年齢に関しては24歳以下、25-34歳、35-44歳、45-54歳、55歳以上に分類した。最高齢93歳、最少齢は13歳：12歳以下は回答の信頼性が薄く、自発的な受検ではない可能性が高く無回答に含めた。

居住地に関しては近畿ブロック(滋賀県・京都府・大阪府・兵庫県・奈良県・三重県)に居住していると回答している人を対象として分析した。これらはエイズ発生動向委員会による報告形式を考慮した。

性別および性指向割合は、性別と不安な感染経路についての項目によって分類した。分析対象者数が少ないため個人特定のリスクを考慮し、性別および性指向別の基本属性に関しては%表記のみを用いた。

*1 「エイズ予防のための戦略研究 エイズ相談・HIV抗体検査等実施状況」報告票

*2 各施設における研究協力期間にHIV抗体検査受検者を対象とした質問紙調査「5分間アンケート」

京阪神(保健所)

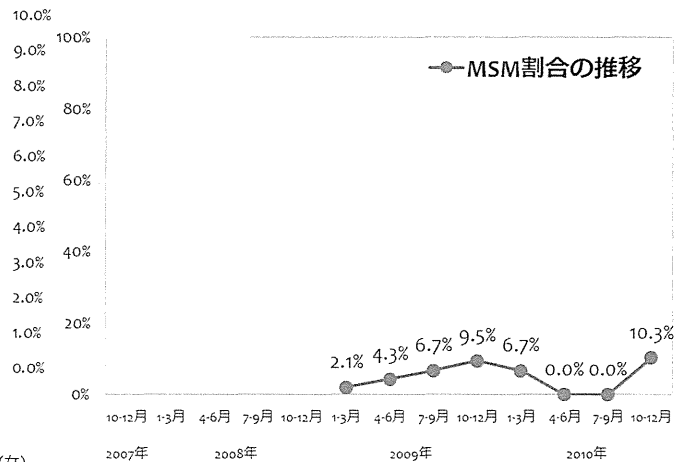
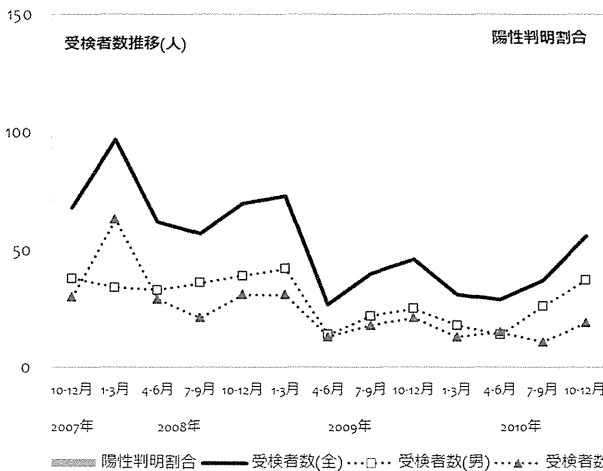
京都府乙訓保健所



	(年度)	2007				2008				2009				2010				合計
	(月)	1-3	4-6	7-9	10-12	1-3	4-6	7-9	10-12	1-3	4-6	7-9	10-12	1-3	4-6	7-9	10-12	
男性受検者数	38	34	33	36	39	42	14	22	25	18	14	26	37	378				
男性陽性者数	0	0	0	0	0	0	0	0	0	0	0	0	0	0				
女性受検者数	30	63	29	21	31	31	13	18	21	13	15	11	19	315				
女性陽性者数	0	0	0	0	0	0	0	0	0	0	0	0	0	0				
その他受検者数	0	0	0	0	0	0	0	0	0	0	0	0	0	0				
その他陽性者数	0	0	0	0	0	0	0	0	0	0	0	0	0	0				
受検者計	68	97	62	57	70	73	27	40	46	31	29	37	56	693				
陽性者計	0	0	0	0	0	0	0	0	0	0	0	0	0	0				
陽性判明割合(男)	0.00%	0.00%	0.00%	0.00%	0.00%	0.00%	0.00%	0.00%	0.00%	0.00%	0.00%	0.00%	0.00%	0.00%				
陽性判明割合(女)	0.00%	0.00%	0.00%	0.00%	0.00%	0.00%	0.00%	0.00%	0.00%	0.00%	0.00%	0.00%	0.00%	0.00%				
陽性判明割合(全)	0.00%	0.00%	0.00%	0.00%	0.00%	0.00%	0.00%	0.00%	0.00%	0.00%	0.00%	0.00%	0.00%	0.00%				

	(年度)	2007				2008				2009				2010				合計
	(月)	1-3	4-6	7-9	10-12	1-3	4-6	7-9	10-12	1-3	4-6	7-9	10-12	1-3	4-6	7-9	10-12	
回収数	0	0	0	0	0	53	23	33	23	16	2	15	29	194				
回収率	0.0%	0.0%	0.0%	0.0%	0.0%	72.6%	85.2%	82.5%	50.0%	51.6%	6.9%	40.5%	51.8%					
分析対象者数	0	0	0	0	0	48	23	30	21	15	2	12	29	180				
有効回収率	0.0%	0.0%	0.0%	0.0%	0.0%	65.8%	85.2%	75.0%	45.7%	48.4%	6.9%	32.4%	51.8%					

	(年度)	2007				2008				2009				2010				合計
	(月)	1-3	4-6	7-9	10-12	1-3	4-6	7-9	10-12	1-3	4-6	7-9	10-12	1-3	4-6	7-9	10-12	
MSM除く男性(n)	0	0	0	0	0	27	9	13	8	8	1	7	20	93				
(%)	0.0%	0.0%	0.0%	0.0%	0.0%	56.3%	39.1%	43.3%	38.1%	53.3%	50.0%	58.3%	69.0%	51.7%				
女性(n)	0	0	0	0	0	20	13	15	11	6	1	4	6	76				
(%)	0.0%	0.0%	0.0%	0.0%	0.0%	41.7%	56.5%	50.0%	52.4%	40.0%	50.0%	33.3%	20.7%	42.2%				
その他(n)	0	0	0	0	0	0	0	0	0	0	0	1	0	1				
(%)	0.0%	0.0%	0.0%	0.0%	0.0%	0.0%	0.0%	0.0%	0.0%	0.0%	0.0%	8.3%	0.0%	0.6%				
MSM(n)	0	0	0	0	0	1	1	2	2	1	0	0	3	10				
(%)	0.0%	0.0%	0.0%	0.0%	0.0%	2.1%	4.3%	6.7%	9.5%	6.7%	0.0%	0.0%	10.3%	5.6%				



○ 性別および性指向別の基本属性（年齢割合・居住地割合）

京都府乙訓保健所

MSM(Men who have sex with men)を除く男性

	(年度)	2007				2008				2009				2010				合計	
		(月)	1-3	4-6	7-9	10-12	1-3	4-6	7-9	10-12	1-3	4-6	7-9	10-12	1-3	4-6	7-9		10-12
			(計)	0	0	0	0	27	9	13	8	8	1	7	20	93			
年齢	24歳以下	0%	0%	0%	0%	0%	22%	44%	8%	13%	25%	0%	14%	20%	20%				
	25-34歳	0%	0%	0%	0%	0%	37%	22%	69%	50%	50%	0%	29%	25%	39%				
	35-44歳	0%	0%	0%	0%	0%	26%	22%	8%	25%	25%	100%	43%	25%	25%				
	45-54歳	0%	0%	0%	0%	0%	11%	11%	8%	0%	0%	0%	14%	10%	9%				
	55歳以上	0%	0%	0%	0%	0%	4%	0%	8%	13%	0%	0%	0%	20%	8%				
	無回答	0%	0%	0%	0%	0%	0%	0%	0%	0%	0%	0%	0%	0%	0%				
居住地	滋賀県	0%	0%	0%	0%	0%	0%	0%	0%	0%	0%	100%	0%	0%	1%				
	京都府	0%	0%	0%	0%	0%	96%	100%	77%	100%	88%	0%	100%	95%	92%				
	大阪府	0%	0%	0%	0%	0%	0%	0%	15%	0%	13%	0%	0%	5%	4%				
	兵庫県	0%	0%	0%	0%	0%	4%	0%	8%	0%	0%	0%	0%	0%	2%				
	奈良県	0%	0%	0%	0%	0%	0%	0%	0%	0%	0%	0%	0%	0%	0%				
	和歌山県	0%	0%	0%	0%	0%	0%	0%	0%	0%	0%	0%	0%	0%	0%				



女性

	(年度)	2007				2008				2009				2010				合計	
		(月)	1-3	4-6	7-9	10-12	1-3	4-6	7-9	10-12	1-3	4-6	7-9	10-12	1-3	4-6	7-9		10-12
			(計)	0	0	0	0	20	13	15	11	6	1	4	6	76			
年齢	24歳以下	0%	0%	0%	0%	0%	35%	69%	73%	36%	50%	0%	75%	33%	51%				
	25-34歳	0%	0%	0%	0%	0%	55%	23%	7%	55%	33%	0%	25%	50%	36%				
	35-44歳	0%	0%	0%	0%	0%	10%	0%	20%	9%	17%	100%	0%	17%	12%				
	45-54歳	0%	0%	0%	0%	0%	0%	8%	0%	0%	0%	0%	0%	0%	1%				
	55歳以上	0%	0%	0%	0%	0%	0%	0%	0%	0%	0%	0%	0%	0%	0%				
	無回答	0%	0%	0%	0%	0%	0%	0%	0%	0%	0%	0%	0%	0%	0%				
居住地	滋賀県	0%	0%	0%	0%	0%	10%	8%	0%	9%	0%	0%	0%	0%	5%				
	京都府	0%	0%	0%	0%	0%	90%	92%	80%	82%	100%	100%	100%	100%	89%				
	大阪府	0%	0%	0%	0%	0%	0%	0%	13%	9%	0%	0%	0%	0%	4%				
	兵庫県	0%	0%	0%	0%	0%	0%	0%	7%	0%	0%	0%	0%	0%	1%				
	奈良県	0%	0%	0%	0%	0%	0%	0%	0%	0%	0%	0%	0%	0%	0%				
	和歌山県	0%	0%	0%	0%	0%	0%	0%	0%	0%	0%	0%	0%	0%	0%				

Men who have sex with men

	(年度)	2007				2008				2009				2010				合計	
		(月)	1-3	4-6	7-9	10-12	1-3	4-6	7-9	10-12	1-3	4-6	7-9	10-12	1-3	4-6	7-9		10-12
			(計)	0	0	0	0	1	1	2	2	1	0	0	3	10			
年齢	24歳以下	0%	0%	0%	0%	0%	0%	0%	0%	100%	0%	0%	0%	100%	50%				
	25-34歳	0%	0%	0%	0%	0%	0%	0%	50%	0%	100%	0%	0%	0%	20%				
	35-44歳	0%	0%	0%	0%	0%	100%	100%	0%	0%	0%	0%	0%	0%	20%				
	45-54歳	0%	0%	0%	0%	0%	0%	0%	0%	0%	0%	0%	0%	0%	0%				
	55歳以上	0%	0%	0%	0%	0%	0%	0%	50%	0%	0%	0%	0%	0%	10%				
	無回答	0%	0%	0%	0%	0%	0%	0%	0%	0%	0%	0%	0%	0%	0%				
居住地	滋賀県	0%	0%	0%	0%	0%	0%	0%	0%	0%	0%	0%	0%	0%	0%				
	京都府	0%	0%	0%	0%	0%	100%	100%	100%	100%	100%	0%	0%	67%	90%				
	大阪府	0%	0%	0%	0%	0%	0%	0%	0%	0%	0%	0%	0%	0%	0%				
	兵庫県	0%	0%	0%	0%	0%	0%	0%	0%	0%	0%	0%	0%	33%	10%				
	奈良県	0%	0%	0%	0%	0%	0%	0%	0%	0%	0%	0%	0%	0%	0%				
	和歌山県	0%	0%	0%	0%	0%	0%	0%	0%	0%	0%	0%	0%	0%	0%				

京阪神(保健所)

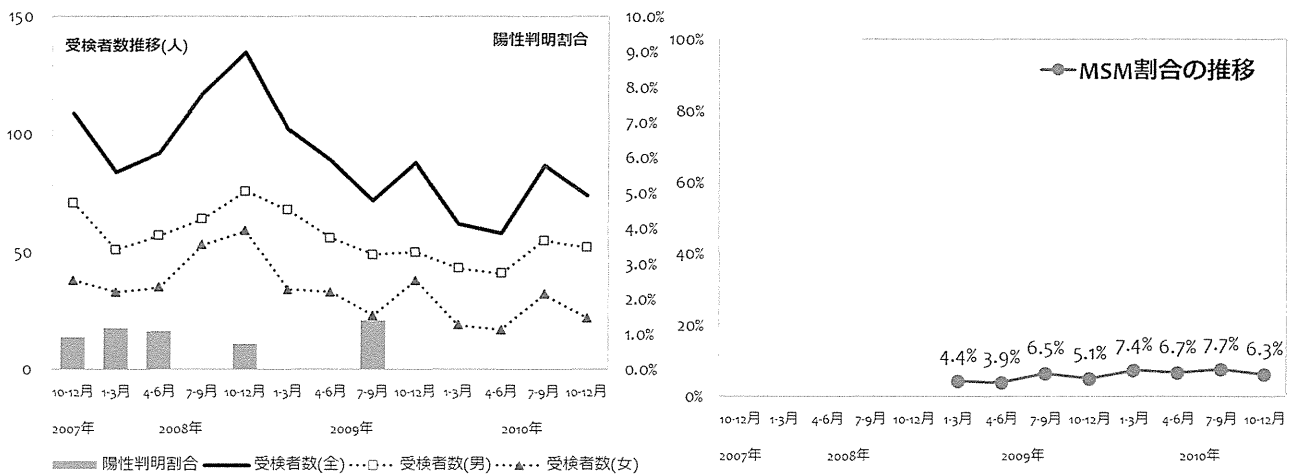
京都府山城北保健所



	2007				2008				2009				2010				合計
	(年度)	(月)				(月)				(月)				(月)			
男性受検者数	71	51	57	64	76	68	56	49	50	43	41	55	52	733			
男性陽性者数	0	1	1	0	1	0	0	1	0	0	0	0	0	4			
女性受検者数	38	33	35	53	59	34	33	23	38	19	17	32	22	436			
女性陽性者数	1	0	0	0	0	0	0	0	0	0	0	0	0	1			
その他受検者数	0	0	0	0	0	0	0	0	0	0	0	0	0	0			
その他陽性者数	0	0	0	0	0	0	0	0	0	0	0	0	0	0			
受検者計	109	84	92	117	135	102	89	72	88	62	58	87	74	1169			
陽性者計	1	1	1	0	1	0	0	1	0	0	0	0	0	5			
陽性判明割合(男)	0.00%	1.96%	1.75%	0.00%	1.32%	0.00%	0.00%	2.04%	0.00%	0.00%	0.00%	0.00%	0.00%	0.55%			
陽性判明割合(女)	2.63%	0.00%	0.00%	0.00%	0.00%	0.00%	0.00%	0.00%	0.00%	0.00%	0.00%	0.00%	0.00%	0.23%			
陽性判明割合(全)	0.92%	1.19%	1.09%	0.00%	0.74%	0.00%	0.00%	1.39%	0.00%	0.00%	0.00%	0.00%	0.00%	0.43%			

	2007				2008				2009				2010				合計
	(年度)	(月)				(月)				(月)				(月)			
回収数	0	0	0	0	0	98	79	65	80	60	51	86	68	587			
回収率	0.0%	0.0%	0.0%	0.0%	0.0%	96.1%	88.8%	90.3%	90.9%	96.8%	87.9%	98.9%	91.9%				
分析対象者数	0	0	0	0	0	91	77	62	78	54	45	78	64	549			
有効回収率	0.0%	0.0%	0.0%	0.0%	0.0%	89.2%	86.5%	86.1%	88.6%	87.1%	77.6%	89.7%	86.5%				

	2007				2008				2009				2010				合計
	(年度)	(月)				(月)				(月)				(月)			
MSM除く男性(n)	0	0	0	0	0	56	49	39	44	35	25	44	41	333			
(%)	0.0%	0.0%	0.0%	0.0%	0.0%	61.5%	63.6%	62.9%	56.4%	64.8%	55.6%	56.4%	64.1%	60.7%			
女性(n)	0	0	0	0	0	31	25	19	30	15	17	28	19	184			
(%)	0.0%	0.0%	0.0%	0.0%	0.0%	34.1%	32.5%	30.6%	38.5%	27.8%	37.8%	35.9%	29.7%	33.5%			
その他(n)	0	0	0	0	0	0	0	0	0	0	0	0	0	0			
(%)	0.0%	0.0%	0.0%	0.0%	0.0%	0.0%	0.0%	0.0%	0.0%	0.0%	0.0%	0.0%	0.0%	0.0%			
MSM(n)	0	0	0	0	0	4	3	4	4	4	3	6	4	32			
(%)	0.0%	0.0%	0.0%	0.0%	0.0%	4.4%	3.9%	6.5%	5.1%	7.4%	6.7%	7.7%	6.3%	5.8%			



○ 性別および性指向別の基本属性 (年齢割合・居住地割合)

京都市山城北保健所

MSM(Men who have sex with men)を除く男性

	(年度)	2007				2008				2009				2010				合計
		(月)																
			1-3	4-6	7-9	10-12	1-3	4-6	7-9	10-12	1-3	4-6	7-9	10-12				
(計)		0	0	0	0	56	49	39	44	35	25	44	41	333				
年齢	24歳以下	0%	0%	0%	0%	32%	35%	36%	36%	23%	12%	23%	32%	30%				
	25-34歳	0%	0%	0%	0%	36%	33%	38%	23%	43%	68%	32%	27%	35%				
	35-44歳	0%	0%	0%	0%	20%	18%	18%	18%	26%	12%	34%	22%	21%				
	45-54歳	0%	0%	0%	0%	2%	4%	3%	16%	0%	4%	9%	15%	7%				
	55歳以上	0%	0%	0%	0%	11%	10%	3%	7%	9%	4%	0%	5%	6%				
	無回答	0%	0%	0%	0%	0%	0%	3%	0%	0%	0%	2%	0%	1%				
居住地	滋賀県	0%	0%	0%	0%	2%	6%	0%	0%	6%	4%	2%	0%	2%				
	京都府	0%	0%	0%	0%	93%	90%	100%	91%	94%	92%	89%	93%	92%				
	大阪府	0%	0%	0%	0%	4%	4%	0%	5%	0%	4%	7%	2%	3%				
	兵庫県	0%	0%	0%	0%	2%	0%	0%	0%	0%	0%	0%	2%	1%				
	奈良県	0%	0%	0%	0%	0%	0%	0%	5%	0%	0%	2%	2%	1%				
	和歌山県	0%	0%	0%	0%	0%	0%	0%	0%	0%	0%	0%	0%	0%				



女性

	(年度)	2007				2008				2009				2010				合計
		(月)																
			1-3	4-6	7-9	10-12	1-3	4-6	7-9	10-12	1-3	4-6	7-9	10-12				
(計)		0	0	0	0	31	25	19	30	15	17	28	19	184				
年齢	24歳以下	0%	0%	0%	0%	35%	40%	47%	50%	47%	29%	36%	21%	39%				
	25-34歳	0%	0%	0%	0%	52%	48%	42%	33%	40%	29%	39%	42%	41%				
	35-44歳	0%	0%	0%	0%	6%	12%	5%	7%	7%	24%	25%	26%	14%				
	45-54歳	0%	0%	0%	0%	0%	0%	5%	0%	7%	6%	0%	5%	2%				
	55歳以上	0%	0%	0%	0%	6%	0%	0%	7%	0%	12%	0%	0%	3%				
	無回答	0%	0%	0%	0%	0%	0%	0%	3%	0%	0%	0%	5%	1%				
居住地	滋賀県	0%	0%	0%	0%	0%	8%	0%	3%	0%	0%	0%	0%	2%				
	京都府	0%	0%	0%	0%	84%	84%	95%	97%	100%	100%	93%	84%	91%				
	大阪府	0%	0%	0%	0%	16%	8%	0%	0%	0%	0%	4%	16%	6%				
	兵庫県	0%	0%	0%	0%	0%	0%	0%	0%	0%	0%	0%	0%	0%				
	奈良県	0%	0%	0%	0%	0%	0%	5%	0%	0%	0%	4%	0%	1%				
	和歌山県	0%	0%	0%	0%	0%	0%	0%	0%	0%	0%	0%	0%	0%				

Men who have sex with men

	(年度)	2007				2008				2009				2010				合計
		(月)																
			1-3	4-6	7-9	10-12	1-3	4-6	7-9	10-12	1-3	4-6	7-9	10-12				
(計)		0	0	0	0	4	3	4	4	4	3	6	4	32				
年齢	24歳以下	0%	0%	0%	0%	50%	33%	25%	50%	25%	100%	33%	50%	44%				
	25-34歳	0%	0%	0%	0%	25%	67%	25%	50%	25%	0%	67%	50%	41%				
	35-44歳	0%	0%	0%	0%	25%	0%	25%	0%	25%	0%	0%	0%	9%				
	45-54歳	0%	0%	0%	0%	0%	0%	0%	0%	25%	0%	0%	0%	3%				
	55歳以上	0%	0%	0%	0%	0%	0%	0%	0%	0%	0%	0%	0%	0%				
	無回答	0%	0%	0%	0%	0%	0%	25%	0%	0%	0%	0%	0%	3%				
居住地	滋賀県	0%	0%	0%	0%	0%	0%	25%	0%	0%	0%	17%	0%	6%				
	京都府	0%	0%	0%	0%	100%	100%	75%	75%	100%	67%	83%	50%	81%				
	大阪府	0%	0%	0%	0%	0%	0%	0%	25%	0%	33%	0%	50%	13%				
	兵庫県	0%	0%	0%	0%	0%	0%	0%	0%	0%	0%	0%	0%	0%				
	奈良県	0%	0%	0%	0%	0%	0%	0%	0%	0%	0%	0%	0%	0%				
	和歌山県	0%	0%	0%	0%	0%	0%	0%	0%	0%	0%	0%	0%	0%				

京阪神(保健所)

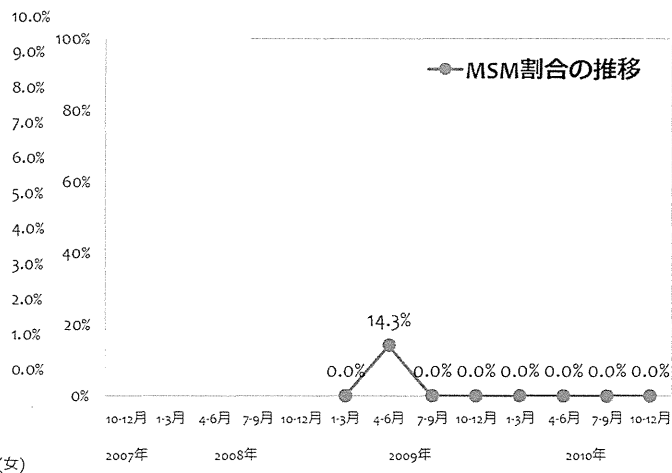
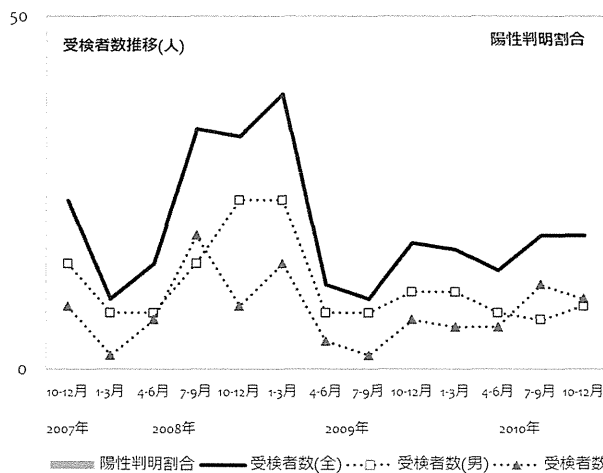
京都府山城南保健所



	(年度)	2007				2008				2009				2010				合計
		(月)				1-3	4-6	7-9	10-12	1-3	4-6	7-9	10-12	1-3	4-6	7-9	10-12	
男性受検者数		15	8	8	15	24	24	8	8	11	11	8	7	9	156			
男性陽性者数		0	0	0	0	0	0	0	0	0	0	0	0	0	0			
女性受検者数		9	2	7	19	9	15	4	2	7	6	6	12	10	108			
女性陽性者数		0	0	0	0	0	0	0	0	0	0	0	0	0	0			
その他受検者数		0	0	0	0	0	0	0	0	0	0	0	0	0	0			
その他陽性者数		0	0	0	0	0	0	0	0	0	0	0	0	0	0			
受検者計		24	10	15	34	33	39	12	10	18	17	14	19	19	264			
陽性者計		0	0	0	0	0	0	0	0	0	0	0	0	0	0			
陽性判明割合(男)		0.00%	0.00%	0.00%	0.00%	0.00%	0.00%	0.00%	0.00%	0.00%	0.00%	0.00%	0.00%	0.00%	0.00%			
陽性判明割合(女)		0.00%	0.00%	0.00%	0.00%	0.00%	0.00%	0.00%	0.00%	0.00%	0.00%	0.00%	0.00%	0.00%	0.00%			
陽性判明割合(全)		0.00%	0.00%	0.00%	0.00%	0.00%	0.00%	0.00%	0.00%	0.00%	0.00%	0.00%	0.00%	0.00%	0.00%			

	(年度)	2007				2008				2009				2010				合計
		(月)				1-3	4-6	7-9	10-12	1-3	4-6	7-9	10-12	1-3	4-6	7-9	10-12	
回収数		0	0	0	0	0	31	7	8	8	12	9	8	14	97			
回収率		0.0%	0.0%	0.0%	0.0%	0.0%	79.5%	58.3%	80.0%	44.4%	70.6%	64.3%	42.1%	73.7%				
分析対象者数		0	0	0	0	0	30	7	7	8	11	9	8	13	93			
有効回収率		0.0%	0.0%	0.0%	0.0%	0.0%	76.9%	58.3%	70.0%	44.4%	64.7%	64.3%	42.1%	68.4%				

	(年度)	2007				2008				2009				2010				合計
		(月)				1-3	4-6	7-9	10-12	1-3	4-6	7-9	10-12	1-3	4-6	7-9	10-12	
MSM除く男性(n)		0	0	0	0	0	18	3	5	4	7	4	1	5	47			
(%)		0.0%	0.0%	0.0%	0.0%	0.0%	60.0%	42.9%	71.4%	50.0%	63.6%	44.4%	12.5%	38.5%	50.5%			
女性(n)		0	0	0	0	0	12	3	2	4	4	5	7	8	45			
(%)		0.0%	0.0%	0.0%	0.0%	0.0%	40.0%	42.9%	28.6%	50.0%	36.4%	55.6%	87.5%	61.5%	48.4%			
その他(n)		0	0	0	0	0	0	0	0	0	0	0	0	0	0			
(%)		0.0%	0.0%	0.0%	0.0%	0.0%	0.0%	0.0%	0.0%	0.0%	0.0%	0.0%	0.0%	0.0%	0.0%			
MSM(n)		0	0	0	0	0	0	1	0	0	0	0	0	0	1			
(%)		0.0%	0.0%	0.0%	0.0%	0.0%	0.0%	14.3%	0.0%	0.0%	0.0%	0.0%	0.0%	0.0%	1.1%			



○ 性別および性指向別の基本属性 (年齢割合・居住地割合)

京都市山城南保健所



MSM(Men who have sex with men)を除く男性															
(年度)	2007	2008				2009				2010				合計	
(月)		1-3	4-6	7-9	10-12	1-3	4-6	7-9	10-12	1-3	4-6	7-9	10-12		
(計)	0	0	0	0	0	18	3	5	4	7	4	1	5	47	
年齢	24歳以下	0%	0%	0%	0%	0%	28%	33%	40%	25%	43%	50%	0%	20%	32%
	25-34歳	0%	0%	0%	0%	0%	50%	67%	60%	50%	29%	25%	0%	40%	45%
	35-44歳	0%	0%	0%	0%	0%	17%	0%	0%	25%	29%	25%	100%	40%	21%
	45-54歳	0%	0%	0%	0%	0%	0%	0%	0%	0%	0%	0%	0%	0%	0%
	55歳以上	0%	0%	0%	0%	0%	6%	0%	0%	0%	0%	0%	0%	0%	2%
	無回答	0%	0%	0%	0%	0%	0%	0%	0%	0%	0%	0%	0%	0%	0%
居住地	滋賀県	0%	0%	0%	0%	0%	6%	0%	0%	0%	0%	0%	0%	0%	2%
	京都府	0%	0%	0%	0%	0%	83%	33%	100%	100%	86%	75%	0%	100%	83%
	大阪府	0%	0%	0%	0%	0%	6%	0%	0%	0%	14%	25%	0%	0%	6%
	兵庫県	0%	0%	0%	0%	0%	0%	33%	0%	0%	0%	0%	0%	0%	2%
	奈良県	0%	0%	0%	0%	0%	6%	33%	0%	0%	0%	0%	100%	0%	6%
	和歌山県	0%	0%	0%	0%	0%	0%	0%	0%	0%	0%	0%	0%	0%	0%

女性															
(年度)	2007	2008				2009				2010				合計	
(月)		1-3	4-6	7-9	10-12	1-3	4-6	7-9	10-12	1-3	4-6	7-9	10-12		
(計)	0	0	0	0	0	12	3	2	4	4	5	7	8	45	
年齢	24歳以下	0%	0%	0%	0%	0%	75%	67%	0%	50%	75%	60%	71%	25%	58%
	25-34歳	0%	0%	0%	0%	0%	25%	33%	100%	50%	25%	40%	29%	63%	40%
	35-44歳	0%	0%	0%	0%	0%	0%	0%	0%	0%	0%	0%	0%	13%	2%
	45-54歳	0%	0%	0%	0%	0%	0%	0%	0%	0%	0%	0%	0%	0%	0%
	55歳以上	0%	0%	0%	0%	0%	0%	0%	0%	0%	0%	0%	0%	0%	0%
	無回答	0%	0%	0%	0%	0%	0%	0%	0%	0%	0%	0%	0%	0%	0%
居住地	滋賀県	0%	0%	0%	0%	0%	0%	0%	0%	0%	0%	0%	0%	0%	0%
	京都府	0%	0%	0%	0%	0%	92%	100%	100%	100%	50%	80%	86%	75%	84%
	大阪府	0%	0%	0%	0%	0%	0%	0%	0%	0%	25%	20%	0%	0%	4%
	兵庫県	0%	0%	0%	0%	0%	0%	0%	0%	0%	0%	0%	0%	0%	0%
	奈良県	0%	0%	0%	0%	0%	8%	0%	0%	0%	25%	0%	14%	25%	11%
	和歌山県	0%	0%	0%	0%	0%	0%	0%	0%	0%	0%	0%	0%	0%	0%

Men who have sex with men															
(年度)	2007	2008				2009				2010				合計	
(月)		1-3	4-6	7-9	10-12	1-3	4-6	7-9	10-12	1-3	4-6	7-9	10-12		
(計)	0	0	0	0	0	0	1	0	0	0	0	0	0	1	
年齢	24歳以下	0%	0%	0%	0%	0%	0%	100%	0%	0%	0%	0%	0%	0%	100%
	25-34歳	0%	0%	0%	0%	0%	0%	0%	0%	0%	0%	0%	0%	0%	0%
	35-44歳	0%	0%	0%	0%	0%	0%	0%	0%	0%	0%	0%	0%	0%	0%
	45-54歳	0%	0%	0%	0%	0%	0%	0%	0%	0%	0%	0%	0%	0%	0%
	55歳以上	0%	0%	0%	0%	0%	0%	0%	0%	0%	0%	0%	0%	0%	0%
	無回答	0%	0%	0%	0%	0%	0%	0%	0%	0%	0%	0%	0%	0%	0%
居住地	滋賀県	0%	0%	0%	0%	0%	0%	0%	0%	0%	0%	0%	0%	0%	0%
	京都府	0%	0%	0%	0%	0%	0%	0%	0%	0%	0%	0%	0%	0%	0%
	大阪府	0%	0%	0%	0%	0%	0%	100%	0%	0%	0%	0%	0%	0%	100%
	兵庫県	0%	0%	0%	0%	0%	0%	0%	0%	0%	0%	0%	0%	0%	0%
	奈良県	0%	0%	0%	0%	0%	0%	0%	0%	0%	0%	0%	0%	0%	0%
	和歌山県	0%	0%	0%	0%	0%	0%	0%	0%	0%	0%	0%	0%	0%	0%

京阪神(保健所)

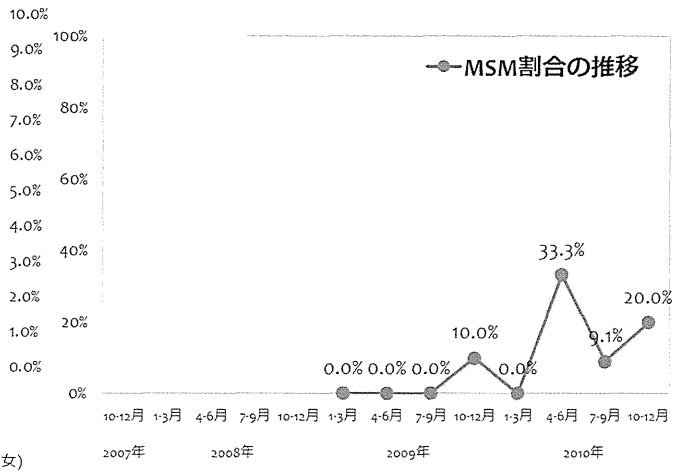
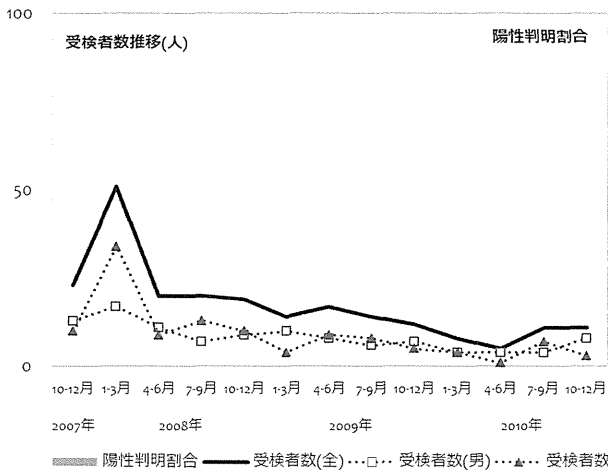
京都府南丹保健所



	(年度)	2007				2008				2009				2010				合計
	(月)	1-3	4-6	7-9	10-12	1-3	4-6	7-9	10-12	1-3	4-6	7-9	10-12	1-3	4-6	7-9	10-12	
男性受検者数		13	17	11	7	9	10	8	6	7	4	4	4	8	108			
男性陽性者数		0	0	0	0	0	0	0	0	0	0	0	0	0	0			
女性受検者数		10	34	9	13	10	4	9	8	5	4	1	7	3	117			
女性陽性者数		0	0	0	0	0	0	0	0	0	0	0	0	0	0			
その他受検者数		0	0	0	0	0	0	0	0	0	0	0	0	0	0			
その他陽性者数		0	0	0	0	0	0	0	0	0	0	0	0	0	0			
受検者計		23	51	20	20	19	14	17	14	12	8	5	11	11	225			
陽性者計		0	0	0	0	0	0	0	0	0	0	0	0	0	0			
陽性判明割合(男)		0.00%	0.00%	0.00%	0.00%	0.00%	0.00%	0.00%	0.00%	0.00%	0.00%	0.00%	0.00%	0.00%	0.00%			
陽性判明割合(女)		0.00%	0.00%	0.00%	0.00%	0.00%	0.00%	0.00%	0.00%	0.00%	0.00%	0.00%	0.00%	0.00%	0.00%			
陽性判明割合(全)		0.00%	0.00%	0.00%	0.00%	0.00%	0.00%	0.00%	0.00%	0.00%	0.00%	0.00%	0.00%	0.00%	0.00%			

	(年度)	2007				2008				2009				2010				合計
	(月)	1-3	4-6	7-9	10-12	1-3	4-6	7-9	10-12	1-3	4-6	7-9	10-12	1-3	4-6	7-9	10-12	
回収数		0	0	0	0	10	16	12	10	6	5	11	11	81				
回収率		0.0%	0.0%	0.0%	0.0%	71.4%	94.1%	85.7%	83.3%	75.0%	100.0%	100.0%	100.0%					
分析対象者数		0	0	0	0	10	15	11	10	6	3	11	10	76				
有効回収率		0.0%	0.0%	0.0%	0.0%	71.4%	88.2%	78.6%	83.3%	75.0%	60.0%	100.0%	90.9%					

	(年度)	2007				2008				2009				2010				合計
	(月)	1-3	4-6	7-9	10-12	1-3	4-6	7-9	10-12	1-3	4-6	7-9	10-12	1-3	4-6	7-9	10-12	
MSM除く男性(n)		0	0	0	0	0	7	7	5	4	3	1	3	5	35			
(%)		0.0%	0.0%	0.0%	0.0%	0.0%	70.0%	46.7%	45.5%	40.0%	50.0%	33.3%	27.3%	50.0%	46.1%			
女性(n)		0	0	0	0	0	3	8	6	5	3	1	7	3	36			
(%)		0.0%	0.0%	0.0%	0.0%	0.0%	30.0%	53.3%	54.5%	50.0%	50.0%	33.3%	63.6%	30.0%	47.4%			
その他(n)		0	0	0	0	0	0	0	0	0	0	0	0	0	0			
(%)		0.0%	0.0%	0.0%	0.0%	0.0%	0.0%	0.0%	0.0%	0.0%	0.0%	0.0%	0.0%	0.0%	0.0%			
MSM(n)		0	0	0	0	0	0	0	1	0	1	1	2	5				
(%)		0.0%	0.0%	0.0%	0.0%	0.0%	0.0%	0.0%	10.0%	0.0%	33.3%	9.1%	20.0%	6.6%				



○ 性別および性指向別の基本属性 (年齢割合・居住地割合)

京都府南丹保健所

MSM(Men who have sex with men)を除く男性

		2007				2008				2009				2010				合計
(年度)		2007				2008				2009				2010				
(月)		1-3				4-6				7-9				10-12				
(計)		0	0	0	0	0	0	0	0	7	7	5	4	3	1	3	5	35
年齢	24歳以下	0%	0%	0%	0%	0%	0%	0%	0%	43%	14%	20%	0%	33%	0%	33%	20%	23%
	25-34歳	0%	0%	0%	0%	0%	0%	0%	0%	14%	43%	40%	0%	33%	100%	67%	20%	31%
	35-44歳	0%	0%	0%	0%	0%	0%	0%	0%	43%	29%	20%	75%	33%	0%	0%	40%	34%
	45-54歳	0%	0%	0%	0%	0%	0%	0%	0%	0%	0%	20%	0%	0%	0%	0%	20%	6%
	55歳以上	0%	0%	0%	0%	0%	0%	0%	0%	0%	14%	0%	25%	0%	0%	0%	0%	6%
	無回答	0%	0%	0%	0%	0%	0%	0%	0%	0%	0%	0%	0%	0%	0%	0%	0%	0%
居住地	滋賀県	0%	0%	0%	0%	0%	0%	0%	0%	0%	0%	0%	0%	0%	0%	0%	0%	0%
	京都府	0%	0%	0%	0%	0%	0%	0%	0%	100%	100%	100%	100%	100%	100%	100%	80%	97%
	大阪府	0%	0%	0%	0%	0%	0%	0%	0%	0%	0%	0%	0%	0%	0%	0%	20%	3%
	兵庫県	0%	0%	0%	0%	0%	0%	0%	0%	0%	0%	0%	0%	0%	0%	0%	0%	0%
	奈良県	0%	0%	0%	0%	0%	0%	0%	0%	0%	0%	0%	0%	0%	0%	0%	0%	0%
	和歌山県	0%	0%	0%	0%	0%	0%	0%	0%	0%	0%	0%	0%	0%	0%	0%	0%	0%



女性

		2007				2008				2009				2010				合計
(年度)		2007				2008				2009				2010				
(月)		1-3				4-6				7-9				10-12				
(計)		0	0	0	0	0	0	0	0	3	8	6	5	3	1	7	3	36
年齢	24歳以下	0%	0%	0%	0%	0%	0%	0%	0%	33%	50%	33%	80%	0%	100%	29%	67%	44%
	25-34歳	0%	0%	0%	0%	0%	0%	0%	0%	33%	25%	33%	0%	33%	0%	57%	33%	31%
	35-44歳	0%	0%	0%	0%	0%	0%	0%	0%	33%	0%	0%	0%	0%	0%	0%	0%	3%
	45-54歳	0%	0%	0%	0%	0%	0%	0%	0%	0%	13%	17%	20%	67%	0%	14%	0%	17%
	55歳以上	0%	0%	0%	0%	0%	0%	0%	0%	0%	13%	17%	0%	0%	0%	0%	0%	6%
	無回答	0%	0%	0%	0%	0%	0%	0%	0%	0%	0%	0%	0%	0%	0%	0%	0%	0%
居住地	滋賀県	0%	0%	0%	0%	0%	0%	0%	0%	0%	0%	0%	0%	0%	0%	0%	0%	0%
	京都府	0%	0%	0%	0%	0%	0%	0%	0%	100%	100%	100%	100%	100%	100%	86%	100%	97%
	大阪府	0%	0%	0%	0%	0%	0%	0%	0%	0%	0%	0%	0%	0%	0%	0%	0%	0%
	兵庫県	0%	0%	0%	0%	0%	0%	0%	0%	0%	0%	0%	0%	0%	0%	14%	0%	3%
	奈良県	0%	0%	0%	0%	0%	0%	0%	0%	0%	0%	0%	0%	0%	0%	0%	0%	0%
	和歌山県	0%	0%	0%	0%	0%	0%	0%	0%	0%	0%	0%	0%	0%	0%	0%	0%	0%

Men who have sex with men

		2007				2008				2009				2010				合計
(年度)		2007				2008				2009				2010				
(月)		1-3				4-6				7-9				10-12				
(計)		0	0	0	0	0	0	0	0	0	0	0	1	0	1	1	2	5
年齢	24歳以下	0%	0%	0%	0%	0%	0%	0%	0%	0%	0%	0%	0%	0%	0%	100%	50%	40%
	25-34歳	0%	0%	0%	0%	0%	0%	0%	0%	0%	0%	0%	100%	0%	0%	0%	0%	20%
	35-44歳	0%	0%	0%	0%	0%	0%	0%	0%	0%	0%	0%	0%	0%	0%	0%	50%	20%
	45-54歳	0%	0%	0%	0%	0%	0%	0%	0%	0%	0%	0%	0%	100%	0%	0%	0%	20%
	55歳以上	0%	0%	0%	0%	0%	0%	0%	0%	0%	0%	0%	0%	0%	0%	0%	0%	0%
	無回答	0%	0%	0%	0%	0%	0%	0%	0%	0%	0%	0%	0%	0%	0%	0%	0%	0%
居住地	滋賀県	0%	0%	0%	0%	0%	0%	0%	0%	0%	0%	0%	0%	0%	0%	0%	0%	0%
	京都府	0%	0%	0%	0%	0%	0%	0%	0%	0%	0%	0%	0%	100%	100%	100%	100%	80%
	大阪府	0%	0%	0%	0%	0%	0%	0%	0%	0%	0%	0%	0%	0%	0%	0%	0%	0%
	兵庫県	0%	0%	0%	0%	0%	0%	0%	0%	0%	0%	0%	100%	0%	0%	0%	0%	20%
	奈良県	0%	0%	0%	0%	0%	0%	0%	0%	0%	0%	0%	0%	0%	0%	0%	0%	0%
	和歌山県	0%	0%	0%	0%	0%	0%	0%	0%	0%	0%	0%	0%	0%	0%	0%	0%	0%

京阪神(保健所)

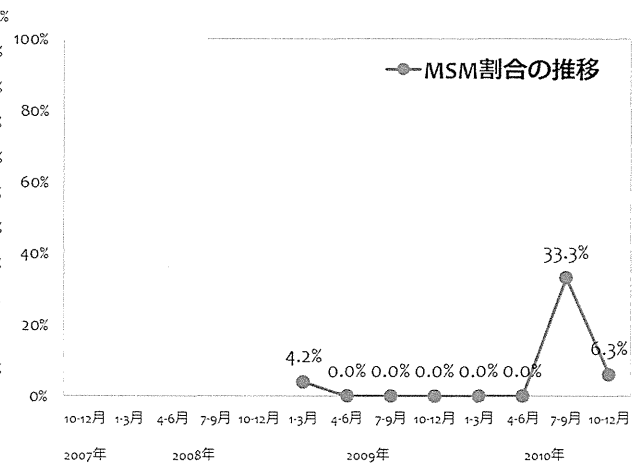
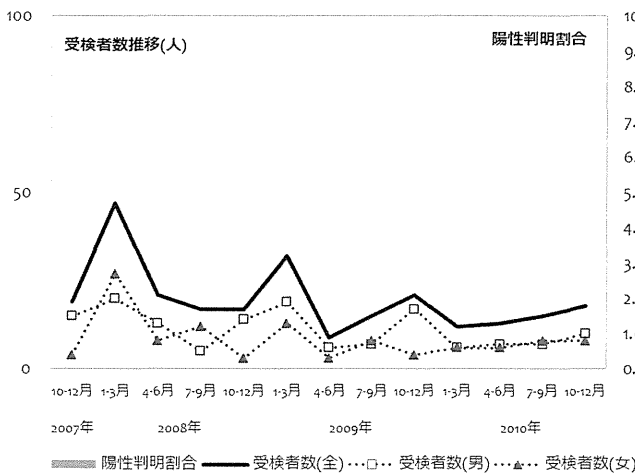
京都府中丹西保健所



	(年度)	2007				2008				2009				2010				合計
		(月)				1-3	4-6	7-9	10-12	1-3	4-6	7-9	10-12	1-3	4-6	7-9	10-12	
男性受検者数		15	20	13	5	14	19	6	7	17	6	7	7	10	146			
男性陽性者数		0	0	0	0	0	0	0	0	0	0	0	0	0	0			
女性受検者数		4	27	8	12	3	13	3	8	4	6	6	8	8	110			
女性陽性者数		0	0	0	0	0	0	0	0	0	0	0	0	0	0			
その他受検者数		0	0	0	0	0	0	0	0	0	0	0	0	0	0			
その他陽性者数		0	0	0	0	0	0	0	0	0	0	0	0	0	0			
受検者計		19	47	21	17	17	32	9	15	21	12	13	15	18	256			
陽性者計		0	0	0	0	0	0	0	0	0	0	0	0	0	0			
陽性判明割合(男)		0.00%	0.00%	0.00%	0.00%	0.00%	0.00%	0.00%	0.00%	0.00%	0.00%	0.00%	0.00%	0.00%	0.00%			
陽性判明割合(女)		0.00%	0.00%	0.00%	0.00%	0.00%	0.00%	0.00%	0.00%	0.00%	0.00%	0.00%	0.00%	0.00%	0.00%			
陽性判明割合(全)		0.00%	0.00%	0.00%	0.00%	0.00%	0.00%	0.00%	0.00%	0.00%	0.00%	0.00%	0.00%	0.00%	0.00%			

	(年度)	2007				2008				2009				2010				合計
		(月)				1-3	4-6	7-9	10-12	1-3	4-6	7-9	10-12	1-3	4-6	7-9	10-12	
回収数		0	0	0	0	0	24	7	4	14	10	10	3	16	88			
回収率		0.0%	0.0%	0.0%	0.0%	0.0%	75.0%	77.8%	26.7%	66.7%	83.3%	76.9%	20.0%	88.9%				
分析対象者数		0	0	0	0	0	24	7	4	11	9	10	3	16	84			
有効回収率		0.0%	0.0%	0.0%	0.0%	0.0%	75.0%	77.8%	26.7%	52.4%	75.0%	76.9%	20.0%	88.9%				

	(年度)	2007				2008				2009				2010				合計
		(月)				1-3	4-6	7-9	10-12	1-3	4-6	7-9	10-12	1-3	4-6	7-9	10-12	
MSM除く男性(n)		0	0	0	0	0	15	5	1	8	6	4	1	9	49			
(%)		0.0%	0.0%	0.0%	0.0%	0.0%	62.5%	71.4%	25.0%	72.7%	66.7%	40.0%	33.3%	56.3%	58.3%			
女性(n)		0	0	0	0	0	8	2	3	3	3	6	1	6	32			
(%)		0.0%	0.0%	0.0%	0.0%	0.0%	33.3%	28.6%	75.0%	27.3%	33.3%	60.0%	33.3%	37.5%	38.1%			
その他(n)		0	0	0	0	0	0	0	0	0	0	0	0	0	0			
(%)		0.0%	0.0%	0.0%	0.0%	0.0%	0.0%	0.0%	0.0%	0.0%	0.0%	0.0%	0.0%	0.0%	0.0%			
MSM(n)		0	0	0	0	0	1	0	0	0	0	0	1	1	3			
(%)		0.0%	0.0%	0.0%	0.0%	0.0%	4.2%	0.0%	0.0%	0.0%	0.0%	0.0%	33.3%	6.3%	3.6%			



○ 性別および性指向別の基本属性 (年齢割合・居住地割合)

京都市中丹西保健所

MSM(Men who have sex with men)を除く男性															
(年度)	2007	2008				2009				2010				合計	
(月)		1-3	4-6	7-9	10-12	1-3	4-6	7-9	10-12	1-3	4-6	7-9	10-12		
(計)	0	0	0	0	0	15	5	1	8	6	4	1	9	49	
年齢	24歳以下	0%	0%	0%	0%	0%	27%	0%	0%	25%	0%	0%	0%	33%	18%
	25-34歳	0%	0%	0%	0%	0%	53%	60%	0%	50%	50%	50%	100%	33%	49%
	35-44歳	0%	0%	0%	0%	0%	13%	40%	100%	13%	50%	50%	0%	11%	24%
	45-54歳	0%	0%	0%	0%	0%	7%	0%	0%	13%	0%	0%	0%	0%	4%
	55歳以上	0%	0%	0%	0%	0%	0%	0%	0%	0%	0%	0%	0%	22%	4%
	無回答	0%	0%	0%	0%	0%	0%	0%	0%	0%	0%	0%	0%	0%	0%
居住地	滋賀県	0%	0%	0%	0%	0%	0%	0%	0%	0%	0%	0%	0%	0%	0%
	京都府	0%	0%	0%	0%	0%	73%	100%	100%	88%	83%	100%	0%	89%	84%
	大阪府	0%	0%	0%	0%	0%	0%	0%	0%	0%	0%	0%	0%	0%	0%
	兵庫県	0%	0%	0%	0%	0%	27%	0%	0%	13%	17%	0%	100%	11%	16%
	奈良県	0%	0%	0%	0%	0%	0%	0%	0%	0%	0%	0%	0%	0%	0%
	和歌山県	0%	0%	0%	0%	0%	0%	0%	0%	0%	0%	0%	0%	0%	0%



女性															
(年度)	2007	2008				2009				2010				合計	
(月)		1-3	4-6	7-9	10-12	1-3	4-6	7-9	10-12	1-3	4-6	7-9	10-12		
(計)	0	0	0	0	0	8	2	3	3	3	6	1	6	32	
年齢	24歳以下	0%	0%	0%	0%	0%	75%	0%	33%	33%	33%	50%	0%	33%	44%
	25-34歳	0%	0%	0%	0%	0%	25%	50%	67%	67%	67%	33%	100%	50%	47%
	35-44歳	0%	0%	0%	0%	0%	0%	50%	0%	0%	0%	17%	0%	0%	6%
	45-54歳	0%	0%	0%	0%	0%	0%	0%	0%	0%	0%	0%	0%	17%	3%
	55歳以上	0%	0%	0%	0%	0%	0%	0%	0%	0%	0%	0%	0%	0%	0%
	無回答	0%	0%	0%	0%	0%	0%	0%	0%	0%	0%	0%	0%	0%	0%
居住地	滋賀県	0%	0%	0%	0%	0%	0%	0%	0%	0%	0%	0%	0%	0%	0%
	京都府	0%	0%	0%	0%	0%	88%	100%	67%	100%	100%	100%	100%	100%	94%
	大阪府	0%	0%	0%	0%	0%	0%	0%	0%	0%	0%	0%	0%	0%	0%
	兵庫県	0%	0%	0%	0%	0%	13%	0%	33%	0%	0%	0%	0%	0%	6%
	奈良県	0%	0%	0%	0%	0%	0%	0%	0%	0%	0%	0%	0%	0%	0%
	和歌山県	0%	0%	0%	0%	0%	0%	0%	0%	0%	0%	0%	0%	0%	0%

Men who have sex with men															
(年度)	2007	2008				2009				2010				合計	
(月)		1-3	4-6	7-9	10-12	1-3	4-6	7-9	10-12	1-3	4-6	7-9	10-12		
(計)	0	0	0	0	0	1	0	0	0	0	0	1	1	3	
年齢	24歳以下	0%	0%	0%	0%	0%	0%	0%	0%	0%	0%	0%	0%	100%	33%
	25-34歳	0%	0%	0%	0%	0%	100%	0%	0%	0%	0%	0%	0%	0%	33%
	35-44歳	0%	0%	0%	0%	0%	0%	0%	0%	0%	0%	0%	100%	0%	33%
	45-54歳	0%	0%	0%	0%	0%	0%	0%	0%	0%	0%	0%	0%	0%	0%
	55歳以上	0%	0%	0%	0%	0%	0%	0%	0%	0%	0%	0%	0%	0%	0%
	無回答	0%	0%	0%	0%	0%	0%	0%	0%	0%	0%	0%	0%	0%	0%
居住地	滋賀県	0%	0%	0%	0%	0%	0%	0%	0%	0%	0%	0%	0%	0%	0%
	京都府	0%	0%	0%	0%	0%	100%	0%	0%	0%	0%	0%	100%	100%	100%
	大阪府	0%	0%	0%	0%	0%	0%	0%	0%	0%	0%	0%	0%	0%	0%
	兵庫県	0%	0%	0%	0%	0%	0%	0%	0%	0%	0%	0%	0%	0%	0%
	奈良県	0%	0%	0%	0%	0%	0%	0%	0%	0%	0%	0%	0%	0%	0%
	和歌山県	0%	0%	0%	0%	0%	0%	0%	0%	0%	0%	0%	0%	0%	0%

京阪神(保健所)

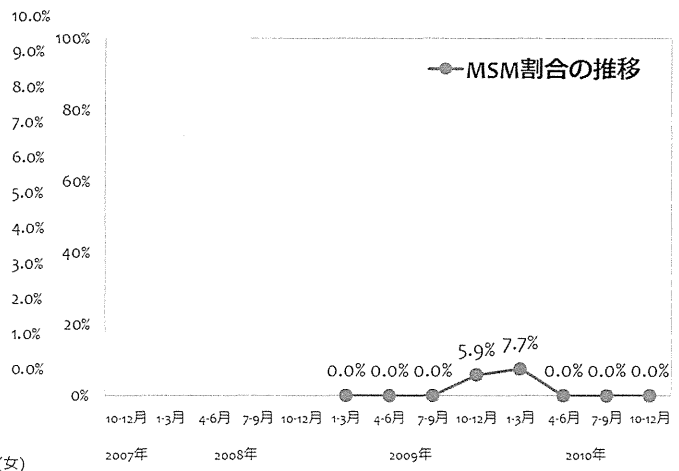
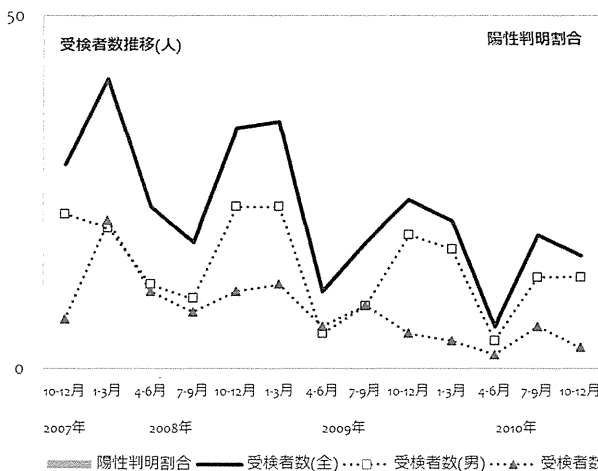
京都府中丹東保健所



	(年度)	2007				2008				2009				2010				合計
		(月)				1-3	4-6	7-9	10-12	1-3	4-6	7-9	10-12	1-3	4-6	7-9	10-12	
男性受検者数		22	20	12	10	23	23	5	9	19	17	4	13	13	190			
男性陽性者数		0	0	0	0	0	0	0	0	0	0	0	0	0	0			
女性受検者数		7	21	11	8	11	12	6	9	5	4	2	6	3	105			
女性陽性者数		0	0	0	0	0	0	0	0	0	0	0	0	0	0			
その他受検者数		0	0	0	0	0	0	0	0	0	0	0	0	0	0			
その他陽性者数		0	0	0	0	0	0	0	0	0	0	0	0	0	0			
受検者計		29	41	23	18	34	35	11	18	24	21	6	19	16	295			
陽性者計		0	0	0	0	0	0	0	0	0	0	0	0	0	0			
陽性判明割合(男)		0.00%	0.00%	0.00%	0.00%	0.00%	0.00%	0.00%	0.00%	0.00%	0.00%	0.00%	0.00%	0.00%	0.00%			
陽性判明割合(女)		0.00%	0.00%	0.00%	0.00%	0.00%	0.00%	0.00%	0.00%	0.00%	0.00%	0.00%	0.00%	0.00%	0.00%			
陽性判明割合(全)		0.00%	0.00%	0.00%	0.00%	0.00%	0.00%	0.00%	0.00%	0.00%	0.00%	0.00%	0.00%	0.00%	0.00%			

	(年度)	2007				2008				2009				2010				合計
		(月)				1-3	4-6	7-9	10-12	1-3	4-6	7-9	10-12	1-3	4-6	7-9	10-12	
回収数		0	0	0	0	0	33	10	15	19	15	6	14	11	123			
回収率		0.0%	0.0%	0.0%	0.0%	0.0%	94.3%	90.9%	83.3%	79.2%	71.4%	100.0%	73.7%	68.8%				
分析対象者数		0	0	0	0	0	30	5	12	17	13	6	12	10	105			
有効回収率		0.0%	0.0%	0.0%	0.0%	0.0%	85.7%	45.5%	66.7%	70.8%	61.9%	100.0%	63.2%	62.5%				

	(年度)	2007				2008				2009				2010				合計
		(月)				1-3	4-6	7-9	10-12	1-3	4-6	7-9	10-12	1-3	4-6	7-9	10-12	
MSM除く男性(n)		0	0	0	0	0	18	2	4	13	9	4	9	10	69			
(%)		0.0%	0.0%	0.0%	0.0%	0.0%	60.0%	40.0%	33.3%	76.5%	69.2%	66.7%	75.0%	100.0%	65.7%			
女性(n)		0	0	0	0	0	12	3	8	3	3	2	3	0	34			
(%)		0.0%	0.0%	0.0%	0.0%	0.0%	40.0%	60.0%	66.7%	17.6%	23.1%	33.3%	25.0%	0.0%	32.4%			
その他(n)		0	0	0	0	0	0	0	0	0	0	0	0	0	0			
(%)		0.0%	0.0%	0.0%	0.0%	0.0%	0.0%	0.0%	0.0%	0.0%	0.0%	0.0%	0.0%	0.0%	0.0%			
MSM(n)		0	0	0	0	0	0	0	0	1	1	0	0	0	2			
(%)		0.0%	0.0%	0.0%	0.0%	0.0%	0.0%	0.0%	0.0%	5.9%	7.7%	0.0%	0.0%	0.0%	1.9%			



○ 性別および性指向別の基本属性 (年齢割合・居住地割合)

京都府中丹東保健所

MSM(Men who have sex with men)を除く男性

	(年度)	2007				2008				2009				2010				合計	
		(月)	1-3	4-6	7-9	10-12	1-3	4-6	7-9	10-12	1-3	4-6	7-9	10-12	1-3	4-6	7-9		10-12
			(計)	0	0	0	0	18	2	4	13	9	4	9	10	69			
年齢	24歳以下	0%	0%	0%	0%	0%	33%	0%	0%	23%	0%	0%	11%	20%	17%				
	25-34歳	0%	0%	0%	0%	0%	39%	50%	25%	46%	78%	25%	22%	70%	46%				
	35-44歳	0%	0%	0%	0%	0%	11%	50%	25%	23%	22%	25%	44%	10%	22%				
	45-54歳	0%	0%	0%	0%	0%	11%	0%	25%	0%	0%	50%	11%	0%	9%				
	55歳以上	0%	0%	0%	0%	0%	6%	0%	25%	8%	0%	0%	11%	0%	6%				
	無回答	0%	0%	0%	0%	0%	0%	0%	0%	0%	0%	0%	0%	0%	0%				
居住地	滋賀県	0%	0%	0%	0%	0%	0%	0%	0%	0%	0%	0%	0%	0%	0%				
	京都府	0%	0%	0%	0%	0%	100%	100%	100%	92%	100%	100%	89%	100%	97%				
	大阪府	0%	0%	0%	0%	0%	0%	0%	0%	0%	0%	0%	0%	0%	0%				
	兵庫県	0%	0%	0%	0%	0%	0%	0%	0%	8%	0%	0%	11%	0%	3%				
	奈良県	0%	0%	0%	0%	0%	0%	0%	0%	0%	0%	0%	0%	0%	0%				
	和歌山県	0%	0%	0%	0%	0%	0%	0%	0%	0%	0%	0%	0%	0%	0%				



女性

	(年度)	2007				2008				2009				2010				合計	
		(月)	1-3	4-6	7-9	10-12	1-3	4-6	7-9	10-12	1-3	4-6	7-9	10-12	1-3	4-6	7-9		10-12
			(計)	0	0	0	0	12	3	8	3	3	2	3	0	34			
年齢	24歳以下	0%	0%	0%	0%	0%	33%	0%	75%	67%	0%	100%	33%	0%	44%				
	25-34歳	0%	0%	0%	0%	0%	33%	33%	25%	0%	67%	0%	67%	0%	32%				
	35-44歳	0%	0%	0%	0%	0%	33%	67%	0%	33%	33%	0%	0%	0%	24%				
	45-54歳	0%	0%	0%	0%	0%	0%	0%	0%	0%	0%	0%	0%	0%	0%				
	55歳以上	0%	0%	0%	0%	0%	0%	0%	0%	0%	0%	0%	0%	0%	0%				
	無回答	0%	0%	0%	0%	0%	0%	0%	0%	0%	0%	0%	0%	0%	0%				
居住地	滋賀県	0%	0%	0%	0%	0%	0%	0%	0%	0%	0%	0%	0%	0%	0%				
	京都府	0%	0%	0%	0%	0%	100%	100%	100%	100%	100%	100%	100%	0%	100%				
	大阪府	0%	0%	0%	0%	0%	0%	0%	0%	0%	0%	0%	0%	0%	0%				
	兵庫県	0%	0%	0%	0%	0%	0%	0%	0%	0%	0%	0%	0%	0%	0%				
	奈良県	0%	0%	0%	0%	0%	0%	0%	0%	0%	0%	0%	0%	0%	0%				
	和歌山県	0%	0%	0%	0%	0%	0%	0%	0%	0%	0%	0%	0%	0%	0%				

Men who have sex with men

	(年度)	2007				2008				2009				2010				合計	
		(月)	1-3	4-6	7-9	10-12	1-3	4-6	7-9	10-12	1-3	4-6	7-9	10-12	1-3	4-6	7-9		10-12
			(計)	0	0	0	0	0	0	0	1	1	0	0	0	2			
年齢	24歳以下	0%	0%	0%	0%	0%	0%	0%	0%	100%	0%	0%	0%	0%	50%				
	25-34歳	0%	0%	0%	0%	0%	0%	0%	0%	0%	0%	0%	0%	0%	0%				
	35-44歳	0%	0%	0%	0%	0%	0%	0%	0%	0%	100%	0%	0%	0%	50%				
	45-54歳	0%	0%	0%	0%	0%	0%	0%	0%	0%	0%	0%	0%	0%	0%				
	55歳以上	0%	0%	0%	0%	0%	0%	0%	0%	0%	0%	0%	0%	0%	0%				
	無回答	0%	0%	0%	0%	0%	0%	0%	0%	0%	0%	0%	0%	0%	0%				
居住地	滋賀県	0%	0%	0%	0%	0%	0%	0%	0%	0%	0%	0%	0%	0%	0%				
	京都府	0%	0%	0%	0%	0%	0%	0%	0%	100%	100%	0%	0%	0%	100%				
	大阪府	0%	0%	0%	0%	0%	0%	0%	0%	0%	0%	0%	0%	0%	0%				
	兵庫県	0%	0%	0%	0%	0%	0%	0%	0%	0%	0%	0%	0%	0%	0%				
	奈良県	0%	0%	0%	0%	0%	0%	0%	0%	0%	0%	0%	0%	0%	0%				
	和歌山県	0%	0%	0%	0%	0%	0%	0%	0%	0%	0%	0%	0%	0%	0%				

京阪神(保健所)

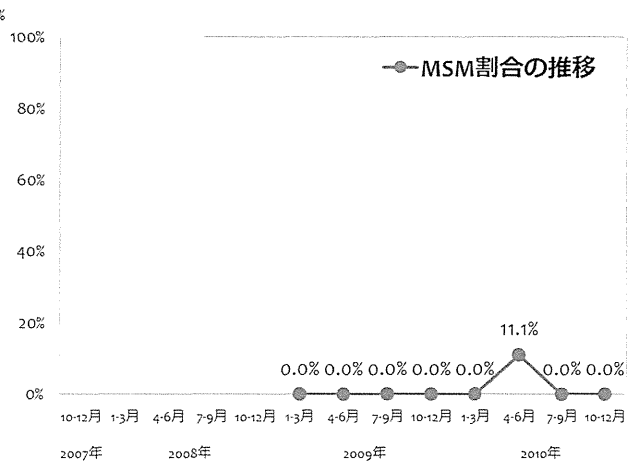
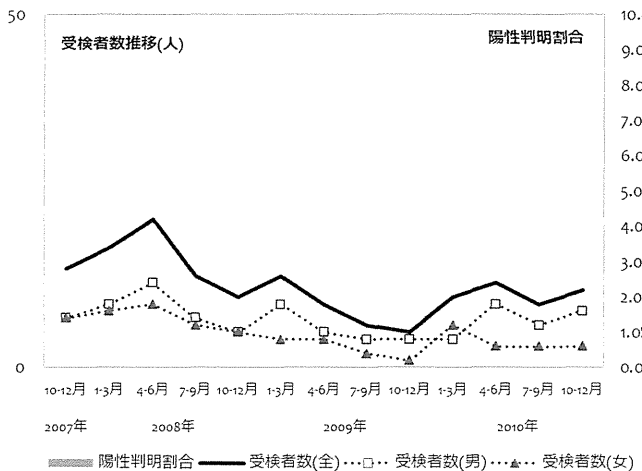
京都府丹後保健所



	(年度)	2007				2008				2009				2010				合計
	(月)	1-3	4-6	7-9	10-12	1-3	4-6	7-9	10-12	1-3	4-6	7-9	10-12	1-3	4-6	7-9	10-12	
男性受検者数	7	9	12	7	5	9	5	4	4	4	4	9	6	8	89			
男性陽性者数	0	0	0	0	0	0	0	0	0	0	0	0	0	0	0			
女性受検者数	7	8	9	6	5	4	4	2	1	6	3	3	3	61				
女性陽性者数	0	0	0	0	0	0	0	0	0	0	0	0	0	0				
その他受検者数	0	0	0	0	0	0	0	0	0	0	0	0	0	0				
その他陽性者数	0	0	0	0	0	0	0	0	0	0	0	0	0	0				
受検者計	14	17	21	13	10	13	9	6	5	10	12	9	11	150				
陽性者計	0	0	0	0	0	0	0	0	0	0	0	0	0	0				
陽性判明割合(男)	0.00%	0.00%	0.00%	0.00%	0.00%	0.00%	0.00%	0.00%	0.00%	0.00%	0.00%	0.00%	0.00%	0.00%				
陽性判明割合(女)	0.00%	0.00%	0.00%	0.00%	0.00%	0.00%	0.00%	0.00%	0.00%	0.00%	0.00%	0.00%	0.00%	0.00%				
陽性判明割合(全)	0.00%	0.00%	0.00%	0.00%	0.00%	0.00%	0.00%	0.00%	0.00%	0.00%	0.00%	0.00%	0.00%	0.00%				

	(年度)	2007				2008				2009				2010				合計
	(月)	1-3	4-6	7-9	10-12	1-3	4-6	7-9	10-12	1-3	4-6	7-9	10-12	1-3	4-6	7-9	10-12	
回収数	0	0	0	0	0	13	7	6	4	8	10	8	11	67				
回収率	0.0%	0.0%	0.0%	0.0%	0.0%	100.0%	77.8%	100.0%	80.0%	80.0%	83.3%	88.9%	100.0%					
分析対象者数	0	0	0	0	0	12	6	3	4	8	9	7	10	59				
有効回収率	0.0%	0.0%	0.0%	0.0%	0.0%	92.3%	66.7%	50.0%	80.0%	80.0%	75.0%	77.8%	90.9%					

	(年度)	2007				2008				2009				2010				合計
	(月)	1-3	4-6	7-9	10-12	1-3	4-6	7-9	10-12	1-3	4-6	7-9	10-12	1-3	4-6	7-9	10-12	
MSM除く男性(n)	0	0	0	0	0	8	4	2	3	2	5	5	7	36				
(%)	0.0%	0.0%	0.0%	0.0%	0.0%	66.7%	66.7%	66.7%	75.0%	25.0%	55.6%	71.4%	70.0%	61.0%				
女性(n)	0	0	0	0	0	4	2	1	1	6	3	2	3	22				
(%)	0.0%	0.0%	0.0%	0.0%	0.0%	33.3%	33.3%	33.3%	25.0%	75.0%	33.3%	28.6%	30.0%	37.3%				
その他(n)	0	0	0	0	0	0	0	0	0	0	0	0	0	0				
(%)	0.0%	0.0%	0.0%	0.0%	0.0%	0.0%	0.0%	0.0%	0.0%	0.0%	0.0%	0.0%	0.0%	0.0%				
MSM(n)	0	0	0	0	0	0	0	0	0	0	1	0	0	1				
(%)	0.0%	0.0%	0.0%	0.0%	0.0%	0.0%	0.0%	0.0%	0.0%	0.0%	11.1%	0.0%	0.0%	1.7%				



○ 性別および性指向別の基本属性 (年齢割合・居住地割合)

京都府丹後保健所

MSM(Men who have sex with men)を除く男性															
(年度)	2007	2008				2009				2010				合計	
(月)	1-3	4-6	7-9	10-12	1-3	4-6	7-9	10-12	1-3	4-6	7-9	10-12			
(計)	0	0	0	0	0	8	4	2	3	2	5	5	7	36	
年齢	24歳以下	0%	0%	0%	0%	0%	25%	0%	0%	33%	0%	0%	20%	0%	11%
	25-34歳	0%	0%	0%	0%	0%	50%	50%	100%	33%	50%	40%	40%	57%	50%
	35-44歳	0%	0%	0%	0%	0%	25%	50%	0%	33%	0%	40%	40%	14%	28%
	45-54歳	0%	0%	0%	0%	0%	0%	0%	0%	0%	0%	0%	0%	14%	3%
	55歳以上	0%	0%	0%	0%	0%	0%	0%	0%	0%	50%	20%	0%	14%	8%
	無回答	0%	0%	0%	0%	0%	0%	0%	0%	0%	0%	0%	0%	0%	0%
居住地	滋賀県	0%	0%	0%	0%	0%	0%	0%	0%	0%	0%	0%	0%	0%	0%
	京都府	0%	0%	0%	0%	0%	100%	100%	100%	67%	100%	100%	100%	86%	94%
	大阪府	0%	0%	0%	0%	0%	0%	0%	0%	0%	0%	0%	0%	0%	0%
	兵庫県	0%	0%	0%	0%	0%	0%	0%	0%	33%	0%	0%	0%	14%	6%
	奈良県	0%	0%	0%	0%	0%	0%	0%	0%	0%	0%	0%	0%	0%	0%
	和歌山県	0%	0%	0%	0%	0%	0%	0%	0%	0%	0%	0%	0%	0%	0%



女性															
(年度)	2007	2008				2009				2010				合計	
(月)	1-3	4-6	7-9	10-12	1-3	4-6	7-9	10-12	1-3	4-6	7-9	10-12			
(計)	0	0	0	0	0	4	2	1	1	6	3	2	3	22	
年齢	24歳以下	0%	0%	0%	0%	0%	50%	50%	0%	100%	67%	0%	0%	67%	45%
	25-34歳	0%	0%	0%	0%	0%	25%	0%	0%	0%	0%	100%	50%	33%	27%
	35-44歳	0%	0%	0%	0%	0%	0%	0%	0%	0%	0%	0%	50%	0%	5%
	45-54歳	0%	0%	0%	0%	0%	25%	0%	100%	0%	0%	0%	0%	0%	9%
	55歳以上	0%	0%	0%	0%	0%	0%	50%	0%	0%	0%	0%	0%	0%	5%
	無回答	0%	0%	0%	0%	0%	0%	0%	0%	0%	33%	0%	0%	0%	9%
居住地	滋賀県	0%	0%	0%	0%	0%	0%	0%	0%	0%	0%	0%	0%	0%	0%
	京都府	0%	0%	0%	0%	0%	100%	100%	100%	100%	100%	67%	100%	100%	95%
	大阪府	0%	0%	0%	0%	0%	0%	0%	0%	0%	0%	0%	0%	0%	0%
	兵庫県	0%	0%	0%	0%	0%	0%	0%	0%	0%	0%	33%	0%	0%	5%
	奈良県	0%	0%	0%	0%	0%	0%	0%	0%	0%	0%	0%	0%	0%	0%
	和歌山県	0%	0%	0%	0%	0%	0%	0%	0%	0%	0%	0%	0%	0%	0%

Men who have sex with men														
(年度)	2007	2008				2009				2010				合計
(月)	1-3	4-6	7-9	10-12	1-3	4-6	7-9	10-12	1-3	4-6	7-9	10-12		
(計)	0	0	0	0	0	0	0	0	0	1	0	0	1	
年齢	24歳以下	0%	0%	0%	0%	0%	0%	0%	0%	0%	0%	0%	0%	0%
	25-34歳	0%	0%	0%	0%	0%	0%	0%	0%	0%	100%	0%	0%	100%
	35-44歳	0%	0%	0%	0%	0%	0%	0%	0%	0%	0%	0%	0%	0%
	45-54歳	0%	0%	0%	0%	0%	0%	0%	0%	0%	0%	0%	0%	0%
	55歳以上	0%	0%	0%	0%	0%	0%	0%	0%	0%	0%	0%	0%	0%
	無回答	0%	0%	0%	0%	0%	0%	0%	0%	0%	0%	0%	0%	0%
居住地	滋賀県	0%	0%	0%	0%	0%	0%	0%	0%	0%	0%	0%	0%	0%
	京都府	0%	0%	0%	0%	0%	0%	0%	0%	0%	100%	0%	0%	100%
	大阪府	0%	0%	0%	0%	0%	0%	0%	0%	0%	0%	0%	0%	0%
	兵庫県	0%	0%	0%	0%	0%	0%	0%	0%	0%	0%	0%	0%	0%
	奈良県	0%	0%	0%	0%	0%	0%	0%	0%	0%	0%	0%	0%	0%
	和歌山県	0%	0%	0%	0%	0%	0%	0%	0%	0%	0%	0%	0%	0%

京阪神(保健所)

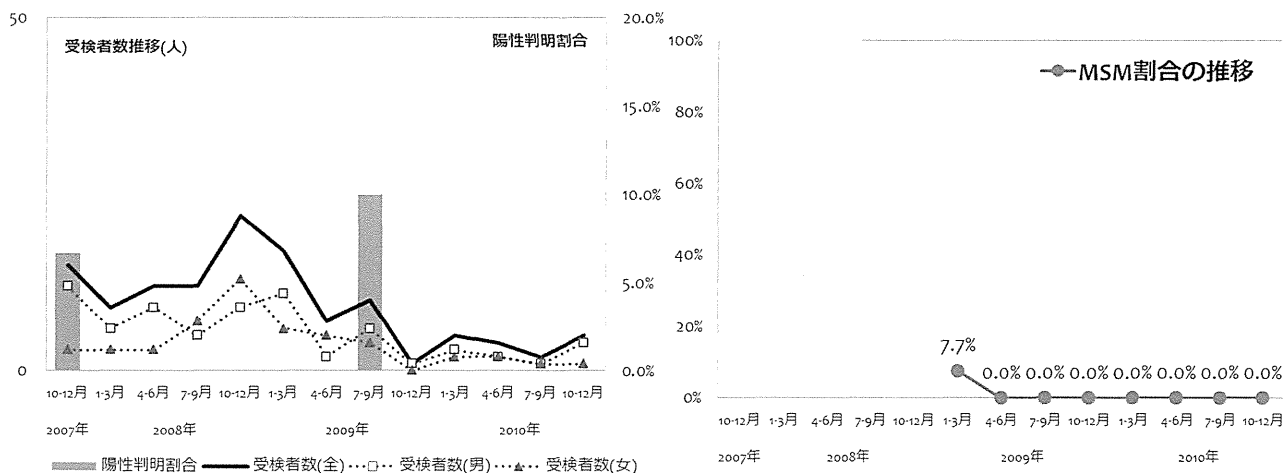
京都府山城北綴喜分室



	(年度)	2007				2008				2009				2010				合計
	(月)	1-3	4-6	7-9	10-12	1-3	4-6	7-9	10-12	1-3	4-6	7-9	10-12	1-3	4-6	7-9	10-12	
男性受検者数		12	6	9	5	9	11	2	6	1	3	2	1	4	71			
男性陽性者数		1	0	0	0	0	0	0	1	0	0	0	0	0	2			
女性受検者数		3	3	3	7	13	6	5	4	0	2	2	1	1	50			
女性陽性者数		0	0	0	0	0	0	0	0	0	0	0	0	0	0			
その他受検者数		0	0	0	0	0	0	0	0	0	0	0	0	0	0			
その他陽性者数		0	0	0	0	0	0	0	0	0	0	0	0	0	0			
受検者計		15	9	12	12	22	17	7	10	1	5	4	2	5	121			
陽性者計		1	0	0	0	0	0	0	1	0	0	0	0	0	2			
陽性判明割合(男)		8.33%	0.00%	0.00%	0.00%	0.00%	0.00%	0.00%	16.67%	0.00%	0.00%	0.00%	0.00%	0.00%	2.82%			
陽性判明割合(女)		0.00%	0.00%	0.00%	0.00%	0.00%	0.00%	0.00%	0.00%	0.00%	0.00%	0.00%	0.00%	0.00%	0.00%			
陽性判明割合(全)		6.67%	0.00%	0.00%	0.00%	0.00%	0.00%	0.00%	10.00%	0.00%	0.00%	0.00%	0.00%	0.00%	1.65%			

	(年度)	2007				2008				2009				2010				合計
	(月)	1-3	4-6	7-9	10-12	1-3	4-6	7-9	10-12	1-3	4-6	7-9	10-12	1-3	4-6	7-9	10-12	
回収数		0	0	0	0	0	14	6	8	0	5	3	2	5	43			
回収率		0.0%	0.0%	0.0%	0.0%	0.0%	82.4%	85.7%	80.0%	0.0%	100.0%	75.0%	100.0%	100.0%				
分析対象者数		0	0	0	0	0	13	6	8	0	5	3	2	5	42			
有効回収率		0.0%	0.0%	0.0%	0.0%	0.0%	76.5%	85.7%	80.0%	0.0%	100.0%	75.0%	100.0%	100.0%				

	(年度)	2007				2008				2009				2010				合計
	(月)	1-3	4-6	7-9	10-12	1-3	4-6	7-9	10-12	1-3	4-6	7-9	10-12	1-3	4-6	7-9	10-12	
MSM除く男性(n)		0	0	0	0	0	7	2	5	0	3	1	1	4	23			
(%)		0.0%	0.0%	0.0%	0.0%	0.0%	53.8%	33.3%	62.5%	0.0%	60.0%	33.3%	50.0%	80.0%	54.8%			
女性(n)		0	0	0	0	0	5	4	3	0	2	2	1	1	18			
(%)		0.0%	0.0%	0.0%	0.0%	0.0%	38.5%	66.7%	37.5%	0.0%	40.0%	66.7%	50.0%	20.0%	42.9%			
その他(n)		0	0	0	0	0	0	0	0	0	0	0	0	0	0			
(%)		0.0%	0.0%	0.0%	0.0%	0.0%	0.0%	0.0%	0.0%	0.0%	0.0%	0.0%	0.0%	0.0%	0.0%			
MSM(n)		0	0	0	0	0	1	0	0	0	0	0	0	0	1			
(%)		0.0%	0.0%	0.0%	0.0%	0.0%	7.7%	0.0%	0.0%	0.0%	0.0%	0.0%	0.0%	0.0%	2.4%			



○ 性別および性指向別の基本属性 (年齢割合・居住地割合)

京都市山城北縦喜分室

MSM(Men who have sex with men)を除く男性

	(年度)	2007				2008				2009				2010				合計
		(月)	1-3	4-6	7-9	10-12	1-3	4-6	7-9	10-12	1-3	4-6	7-9	10-12				
			(計)	0	0	0	0	7	2	5	0	3	1	1	4			
年齢	24歳以下	0%	0%	0%	0%	0%	43%	50%	20%	0%	67%	100%	0%	50%	43%			
	25-34歳	0%	0%	0%	0%	0%	14%	50%	40%	0%	0%	0%	100%	25%	26%			
	35-44歳	0%	0%	0%	0%	0%	0%	0%	20%	0%	33%	0%	0%	25%	13%			
	45-54歳	0%	0%	0%	0%	0%	29%	0%	20%	0%	0%	0%	0%	13%				
	55歳以上	0%	0%	0%	0%	0%	14%	0%	0%	0%	0%	0%	0%	4%				
	無回答	0%	0%	0%	0%	0%	0%	0%	0%	0%	0%	0%	0%	0%				
居住地	滋賀県	0%	0%	0%	0%	0%	0%	0%	0%	0%	0%	0%	0%	0%				
	京都府	0%	0%	0%	0%	0%	86%	100%	80%	0%	100%	100%	100%	91%				
	大阪府	0%	0%	0%	0%	0%	14%	0%	20%	0%	0%	0%	0%	9%				
	兵庫県	0%	0%	0%	0%	0%	0%	0%	0%	0%	0%	0%	0%	0%				
	奈良県	0%	0%	0%	0%	0%	0%	0%	0%	0%	0%	0%	0%	0%				
	和歌山県	0%	0%	0%	0%	0%	0%	0%	0%	0%	0%	0%	0%	0%				

京神

女性

	(年度)	2007				2008				2009				2010				合計
		(月)	1-3	4-6	7-9	10-12	1-3	4-6	7-9	10-12	1-3	4-6	7-9	10-12				
			(計)	0	0	0	0	5	4	3	0	2	2	1	1			
年齢	24歳以下	0%	0%	0%	0%	0%	60%	75%	67%	0%	100%	50%	0%	0%	61%			
	25-34歳	0%	0%	0%	0%	0%	0%	0%	33%	0%	0%	50%	0%	100%	17%			
	35-44歳	0%	0%	0%	0%	0%	40%	25%	0%	0%	0%	100%	0%	22%				
	45-54歳	0%	0%	0%	0%	0%	0%	0%	0%	0%	0%	0%	0%	0%				
	55歳以上	0%	0%	0%	0%	0%	0%	0%	0%	0%	0%	0%	0%	0%				
	無回答	0%	0%	0%	0%	0%	0%	0%	0%	0%	0%	0%	0%	0%				
居住地	滋賀県	0%	0%	0%	0%	0%	0%	0%	0%	0%	0%	0%	0%	0%				
	京都府	0%	0%	0%	0%	0%	100%	75%	100%	0%	100%	100%	100%	94%				
	大阪府	0%	0%	0%	0%	0%	0%	0%	0%	0%	0%	0%	0%	0%				
	兵庫県	0%	0%	0%	0%	0%	0%	0%	0%	0%	0%	0%	0%	0%				
	奈良県	0%	0%	0%	0%	0%	0%	25%	0%	0%	0%	0%	0%	6%				
	和歌山県	0%	0%	0%	0%	0%	0%	0%	0%	0%	0%	0%	0%	0%				

Men who have sex with men

	(年度)	2007				2008				2009				2010				合計
		(月)	1-3	4-6	7-9	10-12	1-3	4-6	7-9	10-12	1-3	4-6	7-9	10-12				
			(計)	0	0	0	0	1	0	0	0	0	0	0	0			
年齢	24歳以下	0%	0%	0%	0%	0%	100%	0%	0%	0%	0%	0%	0%	0%	100%			
	25-34歳	0%	0%	0%	0%	0%	0%	0%	0%	0%	0%	0%	0%	0%				
	35-44歳	0%	0%	0%	0%	0%	0%	0%	0%	0%	0%	0%	0%	0%				
	45-54歳	0%	0%	0%	0%	0%	0%	0%	0%	0%	0%	0%	0%	0%				
	55歳以上	0%	0%	0%	0%	0%	0%	0%	0%	0%	0%	0%	0%	0%				
	無回答	0%	0%	0%	0%	0%	0%	0%	0%	0%	0%	0%	0%	0%				
居住地	滋賀県	0%	0%	0%	0%	0%	0%	0%	0%	0%	0%	0%	0%	0%				
	京都府	0%	0%	0%	0%	0%	100%	0%	0%	0%	0%	0%	0%	100%				
	大阪府	0%	0%	0%	0%	0%	0%	0%	0%	0%	0%	0%	0%	0%				
	兵庫県	0%	0%	0%	0%	0%	0%	0%	0%	0%	0%	0%	0%	0%				
	奈良県	0%	0%	0%	0%	0%	0%	0%	0%	0%	0%	0%	0%	0%				
	和歌山県	0%	0%	0%	0%	0%	0%	0%	0%	0%	0%	0%	0%	0%				

京阪神(保健所)

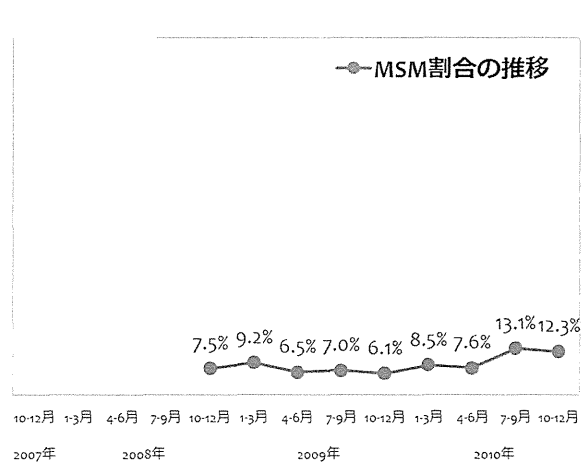
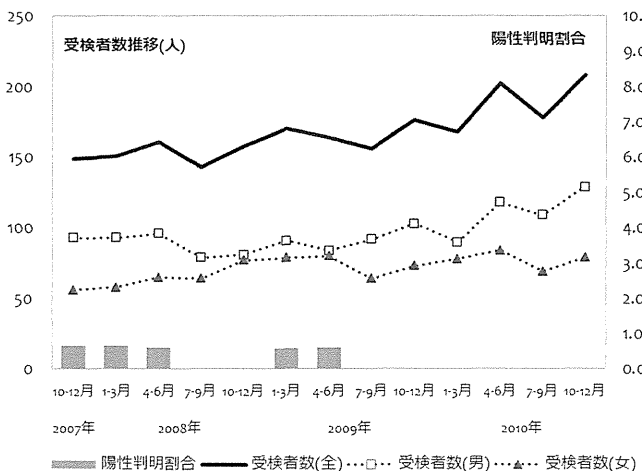
京都市保健福祉局



	2007				2008				2009				2010				合計
	(年度)	(月)			(年度)	(月)			(年度)	(月)			(年度)	(月)			
男性受検者数	93	93	96	79	81	91	84	92	103	90	118	109	129	1258			
男性陽性者数	1	1	1	0	0	1	1	0	0	0	0	0	0	5			
女性受検者数	56	58	65	64	77	79	80	64	73	78	84	69	79	926			
女性陽性者数	0	0	0	0	0	0	0	0	0	0	0	0	0	0			
その他受検者数	0	0	0	0	0	0	0	0	0	0	0	0	0	0			
その他陽性者数	0	0	0	0	0	0	0	0	0	0	0	0	0	0			
受検者計	149	151	161	143	158	170	164	156	176	168	202	178	208	2184			
陽性者計	1	1	1	0	0	1	1	0	0	0	0	0	0	5			
陽性判明割合(男)	1.08%	1.08%	1.04%	0.00%	0.00%	1.10%	1.19%	0.00%	0.00%	0.00%	0.00%	0.00%	0.00%	0.40%			
陽性判明割合(女)	0.00%	0.00%	0.00%	0.00%	0.00%	0.00%	0.00%	0.00%	0.00%	0.00%	0.00%	0.00%	0.00%	0.00%			
陽性判明割合(全)	0.67%	0.66%	0.62%	0.00%	0.00%	0.59%	0.61%	0.00%	0.00%	0.00%	0.00%	0.00%	0.00%	0.23%			

	2007				2008				2009				2010				合計
	(年度)	(月)			(年度)	(月)			(年度)	(月)			(年度)	(月)			
回収数	0	0	0	0	53	145	130	108	137	126	176	129	123	1127			
回収率	0.0%	0.0%	0.0%	0.0%	33.5%	85.3%	79.3%	69.2%	77.8%	75.0%	87.1%	72.5%	59.1%				
分析対象者数	0	0	0	0	53	142	123	100	131	118	170	122	114	1073			
有効回収率	0.0%	0.0%	0.0%	0.0%	33.5%	83.5%	75.0%	64.1%	74.4%	70.2%	84.2%	68.5%	54.8%				

	2007				2008				2009				2010				合計
	(年度)	(月)			(年度)	(月)			(年度)	(月)			(年度)	(月)			
MSM除く男性(n)	0	0	0	0	29	58	53	48	63	51	83	58	55	498			
(%)	0.0%	0.0%	0.0%	0.0%	54.7%	40.8%	43.1%	48.0%	48.1%	43.2%	48.8%	47.5%	48.2%	46.4%			
女性(n)	0	0	0	0	20	71	62	45	60	57	74	47	45	481			
(%)	0.0%	0.0%	0.0%	0.0%	37.7%	50.0%	50.4%	45.0%	45.8%	48.3%	43.5%	38.5%	39.5%	44.8%			
その他(n)	0	0	0	0	0	0	0	0	0	0	0	1	0	1			
(%)	0.0%	0.0%	0.0%	0.0%	0.0%	0.0%	0.0%	0.0%	0.0%	0.0%	0.0%	0.8%	0.0%	0.1%			
MSM(n)	0	0	0	0	4	13	8	7	8	10	13	16	14	93			
(%)	0.0%	0.0%	0.0%	0.0%	7.5%	9.2%	6.5%	7.0%	6.1%	8.5%	7.6%	13.1%	12.3%	8.7%			



○ 性別および性指向別の基本属性 (年齢割合・居住地割合)

京都市保健福祉局

MSM(Men who have sex with men)を除く男性

	(年度)	2007				2008				2009				2010				合計
		(月)	1-3	4-6	7-9	10-12	1-3	4-6	7-9	10-12	1-3	4-6	7-9	10-12				
			(計)	0	0	0	29	58	53	48	63	51	83	58	55	498		
年齢	24歳以下	0%	0%	0%	0%	14%	16%	19%	27%	25%	27%	30%	22%	20%	23%			
	25-34歳	0%	0%	0%	0%	59%	43%	47%	44%	40%	49%	40%	45%	49%	45%			
	35-44歳	0%	0%	0%	0%	24%	29%	23%	19%	27%	18%	24%	21%	25%	23%			
	45-54歳	0%	0%	0%	0%	3%	7%	9%	0%	5%	4%	6%	10%	4%	6%			
	55歳以上	0%	0%	0%	0%	0%	5%	2%	10%	3%	2%	0%	2%	2%	3%			
	無回答	0%	0%	0%	0%	0%	0%	0%	0%	0%	0%	0%	0%	0%	0%			
居住地	滋賀県	0%	0%	0%	0%	10%	10%	9%	10%	3%	12%	5%	7%	9%	8%			
	京都府	0%	0%	0%	0%	79%	74%	85%	83%	89%	78%	87%	84%	84%	83%			
	大阪府	0%	0%	0%	0%	7%	12%	6%	6%	5%	10%	6%	2%	4%	6%			
	兵庫県	0%	0%	0%	0%	0%	0%	0%	0%	2%	0%	2%	5%	2%	1%			
	奈良県	0%	0%	0%	0%	3%	3%	0%	0%	2%	0%	0%	2%	2%	1%			
	和歌山県	0%	0%	0%	0%	0%	0%	0%	0%	0%	0%	0%	0%	0%	0%			

女性

	(年度)	2007				2008				2009				2010				合計
		(月)	1-3	4-6	7-9	10-12	1-3	4-6	7-9	10-12	1-3	4-6	7-9	10-12				
			(計)	0	0	0	20	71	62	45	60	57	74	47	45	481		
年齢	24歳以下	0%	0%	0%	0%	50%	37%	58%	49%	48%	32%	46%	49%	38%	45%			
	25-34歳	0%	0%	0%	0%	40%	52%	29%	38%	40%	44%	36%	34%	40%	40%			
	35-44歳	0%	0%	0%	0%	10%	11%	10%	13%	5%	14%	16%	13%	18%	12%			
	45-54歳	0%	0%	0%	0%	0%	0%	2%	0%	7%	11%	0%	4%	2%	3%			
	55歳以上	0%	0%	0%	0%	0%	0%	0%	0%	0%	0%	1%	0%	0%	0%			
	無回答	0%	0%	0%	0%	0%	0%	2%	0%	0%	0%	0%	0%	2%	0%			
居住地	滋賀県	0%	0%	0%	0%	15%	15%	19%	4%	12%	4%	5%	4%	11%	10%			
	京都府	0%	0%	0%	0%	80%	77%	76%	89%	77%	89%	80%	94%	80%	82%			
	大阪府	0%	0%	0%	0%	5%	7%	3%	4%	8%	5%	14%	2%	9%	7%			
	兵庫県	0%	0%	0%	0%	0%	0%	0%	2%	0%	2%	1%	0%	0%	1%			
	奈良県	0%	0%	0%	0%	0%	0%	2%	0%	3%	0%	0%	0%	0%	1%			
	和歌山県	0%	0%	0%	0%	0%	0%	0%	0%	0%	0%	0%	0%	0%	0%			

Men who have sex with men

	(年度)	2007				2008				2009				2010				合計
		(月)	1-3	4-6	7-9	10-12	1-3	4-6	7-9	10-12	1-3	4-6	7-9	10-12				
			(計)	0	0	0	4	13	8	7	8	10	13	16	14	93		
年齢	24歳以下	0%	0%	0%	0%	50%	46%	13%	71%	38%	20%	38%	50%	43%	41%			
	25-34歳	0%	0%	0%	0%	25%	31%	88%	29%	50%	50%	38%	19%	29%	38%			
	35-44歳	0%	0%	0%	0%	0%	23%	0%	0%	13%	30%	23%	31%	14%	18%			
	45-54歳	0%	0%	0%	0%	0%	0%	0%	0%	0%	0%	0%	0%	7%	1%			
	55歳以上	0%	0%	0%	0%	25%	0%	0%	0%	0%	0%	0%	0%	7%	2%			
	無回答	0%	0%	0%	0%	0%	0%	0%	0%	0%	0%	0%	0%	0%	0%			
居住地	滋賀県	0%	0%	0%	0%	0%	0%	0%	0%	13%	0%	8%	13%	0%	4%			
	京都府	0%	0%	0%	0%	75%	100%	100%	100%	88%	90%	92%	81%	79%	89%			
	大阪府	0%	0%	0%	0%	25%	0%	0%	0%	0%	10%	0%	0%	14%	4%			
	兵庫県	0%	0%	0%	0%	0%	0%	0%	0%	0%	0%	0%	6%	0%	1%			
	奈良県	0%	0%	0%	0%	0%	0%	0%	0%	0%	0%	0%	0%	7%	1%			
	和歌山県	0%	0%	0%	0%	0%	0%	0%	0%	0%	0%	0%	0%	0%	0%			



京阪神(保健所)

神戸市保健所 (即日検査・夜間検査)



	2007				2008				2009				2010				合計
	(月)	1-3	4-6	7-9	10-12	1-3	4-6	7-9	10-12	1-3	4-6	7-9	10-12	1-3	4-6	7-9	
男性受検者数	0	0	233	360	412	429	313	359	338	272	306	340	336	3698			
男性陽性者数	0	0	2	1	0	1	1	1	1	0	2	0	1	10			
女性受検者数	0	0	209	230	371	310	189	193	194	162	193	217	191	2459			
女性陽性者数	0	0	0	0	0	0	0	0	0	0	0	0	0	0			
その他受検者数	0	0	0	0	0	0	0	0	0	0	0	0	0	0			
その他陽性者数	0	0	0	0	0	0	0	0	0	0	0	0	0	0			
受検者計	0	0	442	590	783	739	502	552	532	434	499	557	527	6157			
陽性者計	0	0	2	1	0	1	1	1	1	0	2	0	1	10			
陽性判明割合(男)	0.00%	0.00%	0.86%	0.28%	0.00%	0.23%	0.32%	0.28%	0.30%	0.00%	0.65%	0.00%	0.30%	0.27%			
陽性判明割合(女)	0.00%	0.00%	0.00%	0.00%	0.00%	0.00%	0.00%	0.00%	0.00%	0.00%	0.00%	0.00%	0.00%	0.00%			
陽性判明割合(全)	0.00%	0.00%	0.45%	0.17%	0.00%	0.14%	0.20%	0.18%	0.19%	0.00%	0.40%	0.00%	0.19%	0.16%			

	2007				2008				2009				2010				合計
	(月)	1-3	4-6	7-9	10-12	1-3	4-6	7-9	10-12	1-3	4-6	7-9	10-12	1-3	4-6	7-9	
回収数	0	0	0	0	353	734	505	440	367	378	501	579	507	4364			
回収率	0.0%	0.0%	0.0%	0.0%	45.1%	99.3%	100.6%	79.7%	69.0%	87.1%	100.4%	103.9%	96.2%				
分析対象者数	0	0	0	0	327	705	478	418	342	361	478	540	471	4120			
有効回収率	0.0%	0.0%	0.0%	0.0%	41.8%	95.4%	95.2%	75.7%	64.3%	83.2%	95.8%	96.9%	89.4%				

	2007				2008				2009				2010				合計
	(月)	1-3	4-6	7-9	10-12	1-3	4-6	7-9	10-12	1-3	4-6	7-9	10-12	1-3	4-6	7-9	
MSM除く男性(n)	0	0	0	0	172	374	257	243	191	199	246	286	256	2224			
(%)	0.0%	0.0%	0.0%	0.0%	52.6%	53.0%	53.8%	58.1%	55.8%	55.1%	51.5%	53.0%	54.4%	54.0%			
女性(n)	0	0	0	0	143	302	183	145	131	136	183	213	175	1611			
(%)	0.0%	0.0%	0.0%	0.0%	43.7%	42.8%	38.3%	34.7%	38.3%	37.7%	38.3%	39.4%	37.2%	39.1%			
その他(n)	0	0	0	0	0	0	1	0	0	0	0	1	0	2			
(%)	0.0%	0.0%	0.0%	0.0%	0.0%	0.0%	0.2%	0.0%	0.0%	0.0%	0.0%	0.2%	0.0%	0.0%			
MSM(n)	0	0	0	0	12	29	37	30	20	26	49	40	40	283			
(%)	0.0%	0.0%	0.0%	0.0%	3.7%	4.1%	7.7%	7.2%	5.8%	7.2%	10.3%	7.4%	8.5%	6.9%			

