

京阪神(保健所)

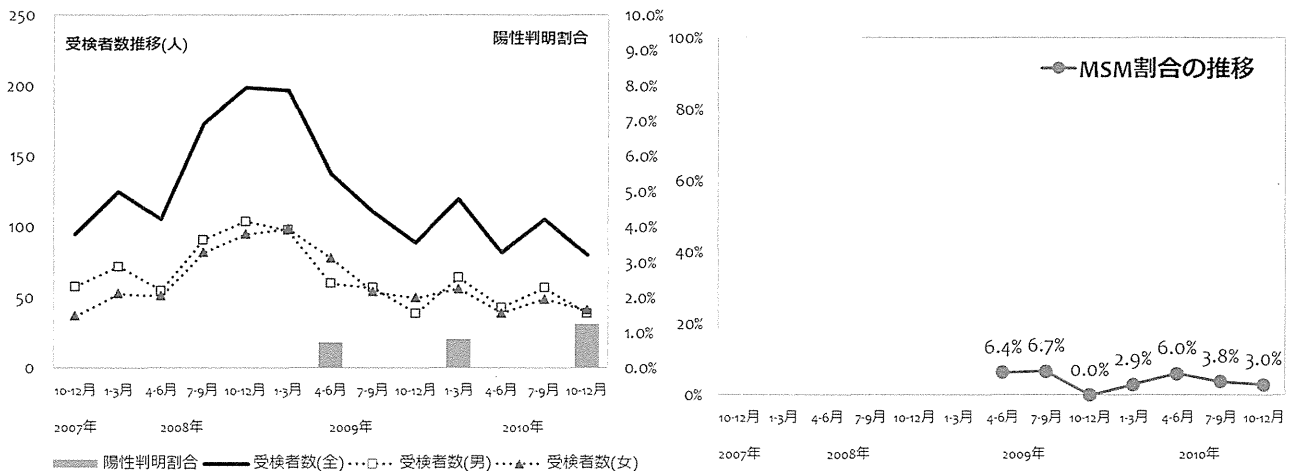
大阪府枚方保健所



	2007					2008				2009				2010				合計
	(年度)	(月)				1-3	4-6	7-9	10-12	1-3	4-6	7-9	10-12	1-3	4-6	7-9	10-12	
男性受検者数	58	72	55	91	104													98
男性陽性者数	0	0	0	0	0	0	1	0	0	1	0	0	1	3				
女性受検者数	37	53	51	82	95	99	78	54	50	56	39	49	41	784				
女性陽性者数	0	0	0	0	0	0	0	0	0	0	0	0	0	0				
その他受検者数	0	0	0	0	0	0	0	0	0	0	0	0	0	0				
その他陽性者数	0	0	0	0	0	0	0	0	0	0	0	0	0	0				
受検者計	95	125	106	173	199	197	138	111	89	120	82	106	80	1621				
陽性者計	0	0	0	0	0	0	1	0	0	1	0	0	1	3				
陽性判明割合(男)	0.00%	0.00%	0.00%	0.00%	0.00%	0.00%	1.67%	0.00%	0.00%	1.56%	0.00%	0.00%	2.56%	0.36%				
陽性判明割合(女)	0.00%	0.00%	0.00%	0.00%	0.00%	0.00%	0.00%	0.00%	0.00%	0.00%	0.00%	0.00%	0.00%	0.00%				
陽性判明割合(全)	0.00%	0.00%	0.00%	0.00%	0.00%	0.00%	0.72%	0.00%	0.00%	0.83%	0.00%	0.00%	1.25%	0.19%				

	2007					2008				2009				2010				合計
	(年度)	(月)				1-3	4-6	7-9	10-12	1-3	4-6	7-9	10-12	1-3	4-6	7-9	10-12	
回収数	0	0	0	0	0													0
回収率	0.0%	0.0%	0.0%	0.0%	0.0%	0.0%	97.8%	86.5%	88.8%	90.0%	90.2%	81.1%	87.5%					
分析対象者数	0	0	0	0	0	0	125	89	77	102	67	79	66	605				
有効回収率	0.0%	0.0%	0.0%	0.0%	0.0%	0.0%	90.6%	80.2%	86.5%	85.0%	81.7%	74.5%	82.5%					

	2007					2008				2009				2010				合計
	(年度)	(月)				1-3	4-6	7-9	10-12	1-3	4-6	7-9	10-12	1-3	4-6	7-9	10-12	
MSM除く男性(n)	0	0	0	0	0													0
(%)	0.0%	0.0%	0.0%	0.0%	0.0%	0.0%	36.8%	46.1%	41.6%	48.0%	47.8%	51.9%	45.5%	44.8%				
女性(n)	0	0	0	0	0	0	71	42	45	50	31	35	34	308				
(%)	0.0%	0.0%	0.0%	0.0%	0.0%	0.0%	56.8%	47.2%	58.4%	49.0%	46.3%	44.3%	51.5%	50.9%				
その他(n)	0	0	0	0	0	0	0	0	0	0	0	0	0	0				
(%)	0.0%	0.0%	0.0%	0.0%	0.0%	0.0%	0.0%	0.0%	0.0%	0.0%	0.0%	0.0%	0.0%	0.0%				
MSM(n)	0	0	0	0	0	0	8	6	0	3	4	3	2	26				
(%)	0.0%	0.0%	0.0%	0.0%	0.0%	0.0%	6.4%	6.7%	0.0%	2.9%	6.0%	3.8%	3.0%	4.3%				



○ 性別および性指向別の基本属性 (年齢割合・居住地割合)

大阪府枚方保健所



MSM(Men who have sex with men)を除く男性														
(年度)	2007	2008				2009				2010				合計
(月)	1-3	4-6	7-9	10-12	1-3	4-6	7-9	10-12	1-3	4-6	7-9	10-12		
(計)	0	0	0	0	0	46	41	32	49	32	41	30	271	
年齢	24歳以下	0%	0%	0%	0%	0%	30%	20%	22%	31%	22%	34%	27%	27%
	25-34歳	0%	0%	0%	0%	0%	35%	51%	44%	31%	19%	29%	30%	34%
	35-44歳	0%	0%	0%	0%	0%	22%	17%	19%	24%	22%	17%	17%	20%
	45-54歳	0%	0%	0%	0%	0%	2%	5%	3%	8%	22%	10%	3%	7%
	55歳以上	0%	0%	0%	0%	0%	11%	7%	13%	6%	16%	7%	23%	11%
	無回答	0%	0%	0%	0%	0%	0%	0%	0%	0%	0%	2%	0%	0%
居住地	滋賀県	0%	0%	0%	0%	0%	0%	0%	0%	0%	0%	0%	0%	0%
	京都府	0%	0%	0%	0%	0%	2%	12%	13%	4%	3%	0%	0%	5%
	大阪府	0%	0%	0%	0%	0%	96%	83%	88%	94%	91%	100%	100%	93%
	兵庫県	0%	0%	0%	0%	0%	2%	0%	0%	2%	3%	0%	0%	1%
	奈良県	0%	0%	0%	0%	0%	0%	2%	0%	0%	3%	0%	0%	1%
	和歌山県	0%	0%	0%	0%	0%	0%	2%	0%	0%	0%	0%	0%	0%

女性														
(年度)	2007	2008				2009				2010				合計
(月)	1-3	4-6	7-9	10-12	1-3	4-6	7-9	10-12	1-3	4-6	7-9	10-12		
(計)	0	0	0	0	0	71	42	45	50	31	35	34	308	
年齢	24歳以下	0%	0%	0%	0%	0%	56%	60%	49%	48%	39%	43%	56%	51%
	25-34歳	0%	0%	0%	0%	0%	24%	26%	33%	42%	39%	31%	26%	31%
	35-44歳	0%	0%	0%	0%	0%	17%	10%	9%	8%	13%	20%	18%	13%
	45-54歳	0%	0%	0%	0%	0%	1%	2%	4%	0%	6%	3%	0%	2%
	55歳以上	0%	0%	0%	0%	0%	1%	2%	4%	2%	3%	0%	0%	2%
	無回答	0%	0%	0%	0%	0%	0%	0%	0%	0%	0%	3%	0%	0%
居住地	滋賀県	0%	0%	0%	0%	0%	0%	0%	0%	0%	0%	3%	0%	0%
	京都府	0%	0%	0%	0%	0%	1%	2%	2%	4%	0%	0%	6%	2%
	大阪府	0%	0%	0%	0%	0%	99%	95%	98%	96%	100%	94%	94%	97%
	兵庫県	0%	0%	0%	0%	0%	0%	0%	0%	0%	0%	3%	0%	0%
	奈良県	0%	0%	0%	0%	0%	0%	2%	0%	0%	0%	0%	0%	0%
	和歌山県	0%	0%	0%	0%	0%	0%	0%	0%	0%	0%	0%	0%	0%

Men who have sex with men														
(年度)	2007	2008				2009				2010				合計
(月)	1-3	4-6	7-9	10-12	1-3	4-6	7-9	10-12	1-3	4-6	7-9	10-12		
(計)	0	0	0	0	0	8	6	0	3	4	3	2	26	
年齢	24歳以下	0%	0%	0%	0%	0%	100%	50%	0%	33%	50%	67%	50%	65%
	25-34歳	0%	0%	0%	0%	0%	0%	17%	0%	0%	0%	33%	50%	12%
	35-44歳	0%	0%	0%	0%	0%	0%	0%	0%	67%	25%	0%	0%	12%
	45-54歳	0%	0%	0%	0%	0%	0%	17%	0%	0%	0%	0%	0%	4%
	55歳以上	0%	0%	0%	0%	0%	0%	17%	0%	0%	25%	0%	0%	8%
	無回答	0%	0%	0%	0%	0%	0%	0%	0%	0%	0%	0%	0%	0%
居住地	滋賀県	0%	0%	0%	0%	0%	0%	0%	0%	0%	0%	0%	0%	0%
	京都府	0%	0%	0%	0%	0%	0%	33%	0%	0%	0%	0%	50%	12%
	大阪府	0%	0%	0%	0%	0%	100%	67%	0%	100%	100%	100%	50%	88%
	兵庫県	0%	0%	0%	0%	0%	0%	0%	0%	0%	0%	0%	0%	0%
	奈良県	0%	0%	0%	0%	0%	0%	0%	0%	0%	0%	0%	0%	0%
	和歌山県	0%	0%	0%	0%	0%	0%	0%	0%	0%	0%	0%	0%	0%

京阪神(保健所)

大阪府寝屋川保健所



表 I

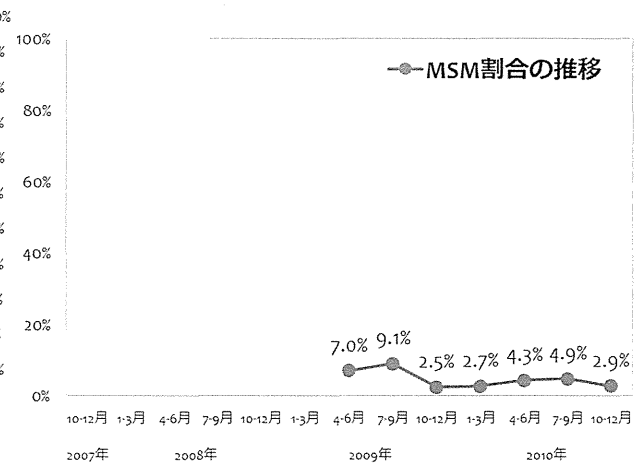
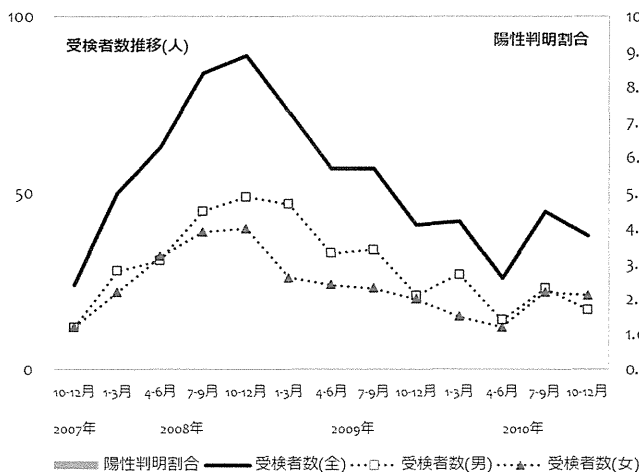
	(年度) 2007	2008				2009				2010				合計
	(月)	1-3	4-6	7-9	10-12	1-3	4-6	7-9	10-12	1-3	4-6	7-9	10-12	
男性受検者数	12	28	31	45	49	47	33	34	21	27	14	23	17	381
男性陽性者数	0	0	0	0	0	0	0	0	0	0	0	0	0	0
女性受検者数	12	22	32	39	40	26	24	23	20	15	12	22	21	308
女性陽性者数	0	0	0	0	0	0	0	0	0	0	0	0	0	0
その他受検者数	0	0	0	0	0	0	0	0	0	0	0	0	0	0
その他陽性者数	0	0	0	0	0	0	0	0	0	0	0	0	0	0
受検者計	24	50	63	84	89	73	57	57	41	42	26	45	38	689
陽性者計	0	0	0	0	0	0	0	0	0	0	0	0	0	0
陽性判明割合(男)	0.00%	0.00%	0.00%	0.00%	0.00%	0.00%	0.00%	0.00%	0.00%	0.00%	0.00%	0.00%	0.00%	0.00%
陽性判明割合(女)	0.00%	0.00%	0.00%	0.00%	0.00%	0.00%	0.00%	0.00%	0.00%	0.00%	0.00%	0.00%	0.00%	0.00%
陽性判明割合(全)	0.00%	0.00%	0.00%	0.00%	0.00%	0.00%	0.00%	0.00%	0.00%	0.00%	0.00%	0.00%	0.00%	0.00%

表 II

	(年度) 2007	2008				2009				2010				合計
	(月)	1-3	4-6	7-9	10-12	1-3	4-6	7-9	10-12	1-3	4-6	7-9	10-12	
回収数	0	0	0	0	0	0	57	57	40	40	25	44	37	300
回収率	0.0%	0.0%	0.0%	0.0%	0.0%	0.0%	100.0%	100.0%	97.6%	95.2%	96.2%	97.8%	97.4%	
分析対象者数	0	0	0	0	0	0	57	55	40	37	23	41	35	288
有効回収率	0.0%	0.0%	0.0%	0.0%	0.0%	0.0%	100.0%	96.5%	97.6%	88.1%	88.5%	91.1%	92.1%	

表 III

	(年度) 2007	2008				2009				2010				合計
	(月)	1-3	4-6	7-9	10-12	1-3	4-6	7-9	10-12	1-3	4-6	7-9	10-12	
MSM除く男性(n)	0	0	0	0	0	0	30	28	19	23	12	18	15	145
(%)	0.0%	0.0%	0.0%	0.0%	0.0%	0.0%	52.6%	50.9%	47.5%	62.2%	52.2%	43.9%	42.9%	50.3%
女性(n)	0	0	0	0	0	0	23	22	20	13	10	21	19	128
(%)	0.0%	0.0%	0.0%	0.0%	0.0%	0.0%	40.4%	40.0%	50.0%	35.1%	43.5%	51.2%	54.3%	44.4%
その他(n)	0	0	0	0	0	0	0	0	0	0	0	0	0	0
(%)	0.0%	0.0%	0.0%	0.0%	0.0%	0.0%	0.0%	0.0%	0.0%	0.0%	0.0%	0.0%	0.0%	0.0%
MSM(n)	0	0	0	0	0	0	4	5	1	1	1	2	1	15
(%)	0.0%	0.0%	0.0%	0.0%	0.0%	0.0%	7.0%	9.1%	2.5%	2.7%	4.3%	4.9%	2.9%	5.2%



○ 性別および性指向別の基本属性 (年齢割合・居住地割合)

大阪府寝屋川保健所

MSM(Men who have sex with men)を除く男性

	(年度)	2007				2008				2009				2010				合計	
		(月)	1-3	4-6	7-9	10-12	1-3	4-6	7-9	10-12	1-3	4-6	7-9	10-12	1-3	4-6	7-9		10-12
			(計)	0	0	0	0	0	0	30	28	19	23	12	18	15	145		
年齢	24歳以下	0%	0%	0%	0%	0%	0%	20%	36%	21%	13%	0%	6%	13%	18%				
	25-34歳	0%	0%	0%	0%	0%	0%	37%	29%	37%	26%	33%	39%	33%	33%				
	35-44歳	0%	0%	0%	0%	0%	0%	27%	29%	21%	35%	42%	28%	20%	28%				
	45-54歳	0%	0%	0%	0%	0%	0%	10%	4%	11%	22%	17%	17%	27%	14%				
	55歳以上	0%	0%	0%	0%	0%	0%	7%	4%	11%	4%	8%	11%	7%	7%				
	無回答	0%	0%	0%	0%	0%	0%	0%	0%	0%	0%	0%	0%	0%	0%				
居住地	滋賀県	0%	0%	0%	0%	0%	0%	0%	0%	0%	0%	0%	0%	0%	0%				
	京都府	0%	0%	0%	0%	0%	0%	0%	7%	0%	0%	0%	6%	7%	3%				
	大阪府	0%	0%	0%	0%	0%	0%	97%	93%	100%	96%	100%	94%	93%	96%				
	兵庫県	0%	0%	0%	0%	0%	0%	0%	0%	0%	0%	0%	0%	0%	0%				
	奈良県	0%	0%	0%	0%	0%	0%	3%	0%	0%	4%	0%	0%	0%	1%				
	和歌山県	0%	0%	0%	0%	0%	0%	0%	0%	0%	0%	0%	0%	0%	0%				



女性

	(年度)	2007				2008				2009				2010				合計	
		(月)	1-3	4-6	7-9	10-12	1-3	4-6	7-9	10-12	1-3	4-6	7-9	10-12	1-3	4-6	7-9		10-12
			(計)	0	0	0	0	0	23	22	20	13	10	21	19	128			
年齢	24歳以下	0%	0%	0%	0%	0%	0%	61%	64%	60%	38%	0%	52%	26%	48%				
	25-34歳	0%	0%	0%	0%	0%	0%	22%	14%	30%	23%	70%	29%	47%	30%				
	35-44歳	0%	0%	0%	0%	0%	0%	4%	23%	0%	38%	20%	14%	21%	16%				
	45-54歳	0%	0%	0%	0%	0%	0%	4%	0%	10%	0%	10%	5%	5%	5%				
	55歳以上	0%	0%	0%	0%	0%	0%	4%	0%	0%	0%	0%	0%	0%	1%				
	無回答	0%	0%	0%	0%	0%	0%	4%	0%	0%	0%	0%	0%	0%	1%				
居住地	滋賀県	0%	0%	0%	0%	0%	0%	0%	0%	0%	0%	0%	0%	0%	0%				
	京都府	0%	0%	0%	0%	0%	0%	0%	0%	0%	0%	0%	0%	0%	0%				
	大阪府	0%	0%	0%	0%	0%	0%	100%	95%	100%	100%	100%	100%	95%	98%				
	兵庫県	0%	0%	0%	0%	0%	0%	0%	0%	0%	0%	0%	0%	5%	1%				
	奈良県	0%	0%	0%	0%	0%	0%	0%	5%	0%	0%	0%	0%	0%	1%				
	和歌山県	0%	0%	0%	0%	0%	0%	0%	0%	0%	0%	0%	0%	0%	0%				

Men who have sex with men

	(年度)	2007				2008				2009				2010				合計	
		(月)	1-3	4-6	7-9	10-12	1-3	4-6	7-9	10-12	1-3	4-6	7-9	10-12	1-3	4-6	7-9		10-12
			(計)	0	0	0	0	0	4	5	1	1	1	2	1	15			
年齢	24歳以下	0%	0%	0%	0%	0%	0%	25%	0%	0%	0%	0%	50%	0%	13%				
	25-34歳	0%	0%	0%	0%	0%	0%	50%	40%	100%	0%	0%	0%	0%	33%				
	35-44歳	0%	0%	0%	0%	0%	0%	25%	20%	0%	100%	100%	50%	100%	40%				
	45-54歳	0%	0%	0%	0%	0%	0%	0%	40%	0%	0%	0%	0%	0%	13%				
	55歳以上	0%	0%	0%	0%	0%	0%	0%	0%	0%	0%	0%	0%	0%	0%				
	無回答	0%	0%	0%	0%	0%	0%	0%	0%	0%	0%	0%	0%	0%	0%				
居住地	滋賀県	0%	0%	0%	0%	0%	0%	0%	0%	0%	0%	0%	0%	0%	0%				
	京都府	0%	0%	0%	0%	0%	0%	0%	0%	0%	0%	0%	0%	0%	0%				
	大阪府	0%	0%	0%	0%	0%	0%	100%	100%	100%	100%	100%	100%	100%	100%				
	兵庫県	0%	0%	0%	0%	0%	0%	0%	0%	0%	0%	0%	0%	0%	0%				
	奈良県	0%	0%	0%	0%	0%	0%	0%	0%	0%	0%	0%	0%	0%	0%				
	和歌山県	0%	0%	0%	0%	0%	0%	0%	0%	0%	0%	0%	0%	0%	0%				

京阪神(保健所)

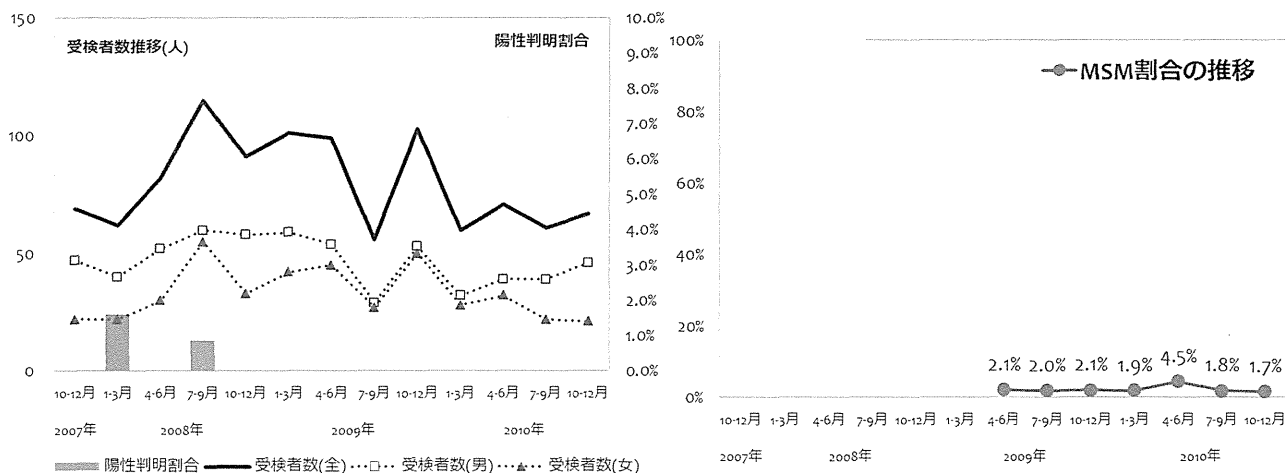
大阪府守口保健所

大阪

	(年度)	2007				2008				2009				2010				合計
	(月)	1-3	4-6	7-9	10-12	1-3	4-6	7-9	10-12	1-3	4-6	7-9	10-12	1-3	4-6	7-9	10-12	
男性受検者数	47	40	52	60	58	59	54	29	53	32	39	39	46	608				
男性陽性者数	0	0	0	1	0	0	0	0	0	0	0	0	0	1				
女性受検者数	22	22	30	55	33	42	45	27	50	28	32	22	21	429				
女性陽性者数	0	1	0	0	0	0	0	0	0	0	0	0	0	1				
その他受検者数	0	0	0	0	0	0	0	0	0	0	0	0	0	0				
その他陽性者数	0	0	0	0	0	0	0	0	0	0	0	0	0	0				
受検者計	69	62	82	115	91	101	99	56	103	60	71	61	67	1037				
陽性者計	0	1	0	1	0	0	0	0	0	0	0	0	0	2				
陽性判明割合(男)	0.00%	0.00%	0.00%	1.67%	0.00%	0.00%	0.00%	0.00%	0.00%	0.00%	0.00%	0.00%	0.00%	0.16%				
陽性判明割合(女)	0.00%	4.55%	0.00%	0.00%	0.00%	0.00%	0.00%	0.00%	0.00%	0.00%	0.00%	0.00%	0.00%	0.23%				
陽性判明割合(全)	0.00%	1.61%	0.00%	0.87%	0.00%	0.00%	0.00%	0.00%	0.00%	0.00%	0.00%	0.00%	0.00%	0.19%				

	(年度)	2007				2008				2009				2010				合計
	(月)	1-3	4-6	7-9	10-12	1-3	4-6	7-9	10-12	1-3	4-6	7-9	10-12	1-3	4-6	7-9	10-12	
回収数	0	0	0	0	0	0	100	56	51	57	70	59	62	455				
回収率	0.0%	0.0%	0.0%	0.0%	0.0%	0.0%	101.0%	100.0%	49.5%	95.0%	98.6%	96.7%	92.5%					
分析対象者数	0	0	0	0	0	0	95	51	48	53	66	57	58	428				
有効回収率	0.0%	0.0%	0.0%	0.0%	0.0%	0.0%	96.0%	91.1%	46.6%	88.3%	93.0%	93.4%	86.6%					

	(年度)	2007				2008				2009				2010				合計
	(月)	1-3	4-6	7-9	10-12	1-3	4-6	7-9	10-12	1-3	4-6	7-9	10-12	1-3	4-6	7-9	10-12	
MSM除く男性(n)	0	0	0	0	0	0	50	25	26	26	34	37	38	236				
(%)	0.0%	0.0%	0.0%	0.0%	0.0%	0.0%	52.6%	49.0%	54.2%	49.1%	51.5%	64.9%	65.5%	55.1%				
女性(n)	0	0	0	0	0	0	43	24	20	26	29	18	19	179				
(%)	0.0%	0.0%	0.0%	0.0%	0.0%	0.0%	45.3%	47.1%	41.7%	49.1%	43.9%	31.6%	32.8%	41.8%				
その他(n)	0	0	0	0	0	0	0	1	1	0	0	1	0	3				
(%)	0.0%	0.0%	0.0%	0.0%	0.0%	0.0%	0.0%	2.0%	2.1%	0.0%	0.0%	1.8%	0.0%	0.7%				
MSM(n)	0	0	0	0	0	0	2	1	1	1	3	1	1	10				
(%)	0.0%	0.0%	0.0%	0.0%	0.0%	0.0%	2.1%	2.0%	2.1%	1.9%	4.5%	1.8%	1.7%	2.3%				



○ 性別および性指向別の基本属性 (年齢割合・居住地割合)

大阪府守口保健所

MSM(Men who have sex with men)を除く男性															
(年度)	2007	2008				2009				2010				合計	
(月)	1-3	4-6	7-9	10-12	1-3	4-6	7-9	10-12	1-3	4-6	7-9	10-12			
(計)	0	0	0	0	0	50	25	26	26	34	37	38	236		
年齢	24歳以下	0%	0%	0%	0%	0%	12%	20%	15%	31%	24%	22%	13%	19%	
	25-34歳	0%	0%	0%	0%	0%	32%	28%	27%	23%	29%	32%	13%	27%	
	35-44歳	0%	0%	0%	0%	0%	26%	20%	23%	31%	26%	27%	42%	28%	
	45-54歳	0%	0%	0%	0%	0%	8%	20%	19%	8%	12%	8%	18%	13%	
	55歳以上	0%	0%	0%	0%	0%	22%	12%	12%	8%	6%	11%	13%	13%	
	無回答	0%	0%	0%	0%	0%	0%	0%	4%	0%	3%	0%	0%	1%	
居住地	滋賀県	0%	0%	0%	0%	0%	0%	0%	0%	0%	0%	0%	0%	0%	
	京都府	0%	0%	0%	0%	0%	0%	4%	0%	0%	0%	0%	0%	0%	
	大阪府	0%	0%	0%	0%	0%	98%	96%	100%	100%	100%	100%	95%	98%	
	兵庫県	0%	0%	0%	0%	0%	0%	0%	0%	0%	0%	0%	3%	0%	
	奈良県	0%	0%	0%	0%	0%	2%	0%	0%	0%	0%	0%	3%	1%	
	和歌山県	0%	0%	0%	0%	0%	0%	0%	0%	0%	0%	0%	0%	0%	



女性															
(年度)	2007	2008				2009				2010				合計	
(月)	1-3	4-6	7-9	10-12	1-3	4-6	7-9	10-12	1-3	4-6	7-9	10-12			
(計)	0	0	0	0	0	43	24	20	26	29	18	19	179		
年齢	24歳以下	0%	0%	0%	0%	0%	42%	42%	45%	31%	52%	33%	32%	40%	
	25-34歳	0%	0%	0%	0%	0%	26%	38%	15%	42%	17%	44%	53%	32%	
	35-44歳	0%	0%	0%	0%	0%	23%	13%	25%	19%	21%	17%	16%	20%	
	45-54歳	0%	0%	0%	0%	0%	5%	4%	10%	0%	7%	6%	0%	4%	
	55歳以上	0%	0%	0%	0%	0%	2%	0%	5%	8%	3%	0%	0%	3%	
	無回答	0%	0%	0%	0%	0%	2%	4%	0%	0%	0%	0%	0%	1%	
居住地	滋賀県	0%	0%	0%	0%	0%	0%	0%	0%	0%	0%	0%	0%	0%	
	京都府	0%	0%	0%	0%	0%	2%	0%	0%	4%	0%	0%	0%	1%	
	大阪府	0%	0%	0%	0%	0%	98%	100%	95%	96%	100%	100%	100%	98%	
	兵庫県	0%	0%	0%	0%	0%	0%	0%	5%	0%	0%	0%	0%	1%	
	奈良県	0%	0%	0%	0%	0%	0%	0%	0%	0%	0%	0%	0%	0%	
	和歌山県	0%	0%	0%	0%	0%	0%	0%	0%	0%	0%	0%	0%	0%	

Men who have sex with men														
(年度)	2007	2008				2009				2010				合計
(月)	1-3	4-6	7-9	10-12	1-3	4-6	7-9	10-12	1-3	4-6	7-9	10-12		
(計)	0	0	0	0	0	2	1	1	1	3	1	1	10	
年齢	24歳以下	0%	0%	0%	0%	0%	0%	0%	0%	0%	0%	0%	100%	10%
	25-34歳	0%	0%	0%	0%	0%	50%	0%	0%	100%	67%	100%	0%	50%
	35-44歳	0%	0%	0%	0%	0%	0%	0%	0%	0%	0%	0%	0%	0%
	45-54歳	0%	0%	0%	0%	0%	50%	100%	0%	0%	33%	0%	0%	30%
	55歳以上	0%	0%	0%	0%	0%	0%	0%	100%	0%	0%	0%	0%	10%
	無回答	0%	0%	0%	0%	0%	0%	0%	0%	0%	0%	0%	0%	0%
居住地	滋賀県	0%	0%	0%	0%	0%	0%	0%	0%	0%	0%	0%	0%	0%
	京都府	0%	0%	0%	0%	0%	0%	0%	0%	0%	0%	0%	0%	0%
	大阪府	0%	0%	0%	0%	0%	100%	100%	100%	100%	100%	100%	100%	100%
	兵庫県	0%	0%	0%	0%	0%	0%	0%	0%	0%	0%	0%	0%	0%
	奈良県	0%	0%	0%	0%	0%	0%	0%	0%	0%	0%	0%	0%	0%
	和歌山県	0%	0%	0%	0%	0%	0%	0%	0%	0%	0%	0%	0%	0%

京阪神(保健所)

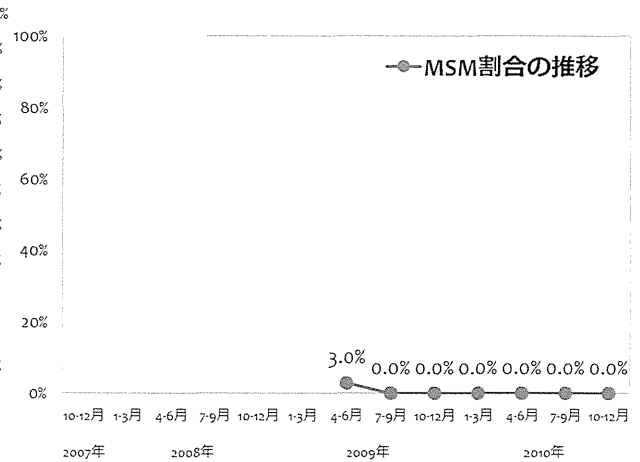
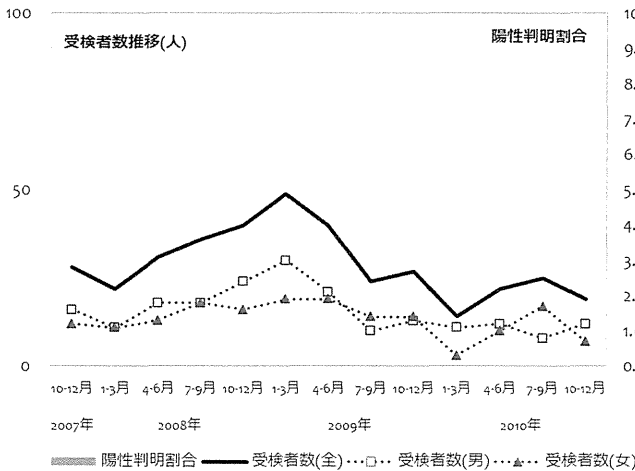
大阪府四條畷保健所



	2007				2008				2009				2010				合計
	(年度)	(月)			(年度)	(月)			(年度)	(月)			(年度)	(月)			
男性受検者数	16	11	18	18	24	30	21	10	13	11	12	8	12	204			
男性陽性者数	0	0	0	0	0	0	0	0	0	0	0	0	0	0			
女性受検者数	12	11	13	18	16	19	19	14	14	3	10	17	7	173			
女性陽性者数	0	0	0	0	0	0	0	0	0	0	0	0	0	0			
その他受検者数	0	0	0	0	0	0	0	0	0	0	0	0	0	0			
その他陽性者数	0	0	0	0	0	0	0	0	0	0	0	0	0	0			
受検者計	28	22	31	36	40	49	40	24	27	14	22	25	19	377			
陽性者計	0	0	0	0	0	0	0	0	0	0	0	0	0	0			
陽性判明割合(男)	0.00%	0.00%	0.00%	0.00%	0.00%	0.00%	0.00%	0.00%	0.00%	0.00%	0.00%	0.00%	0.00%	0.00%			
陽性判明割合(女)	0.00%	0.00%	0.00%	0.00%	0.00%	0.00%	0.00%	0.00%	0.00%	0.00%	0.00%	0.00%	0.00%	0.00%			
陽性判明割合(全)	0.00%	0.00%	0.00%	0.00%	0.00%	0.00%	0.00%	0.00%	0.00%	0.00%	0.00%	0.00%	0.00%	0.00%			

	2007				2008				2009				2010				合計
	(年度)	(月)			(年度)	(月)			(年度)	(月)			(年度)	(月)			
回収数	0	0	0	0	0	0	36	24	27	12	22	25	19	165			
回収率	0.0%	0.0%	0.0%	0.0%	0.0%	0.0%	90.0%	100.0%	100.0%	85.7%	100.0%	100.0%	100.0%				
分析対象者数	0	0	0	0	0	0	33	24	24	10	20	22	19	152			
有効回収率	0.0%	0.0%	0.0%	0.0%	0.0%	0.0%	82.5%	100.0%	88.9%	71.4%	90.9%	88.0%	100.0%				

	2007				2008				2009				2010				合計
	(年度)	(月)			(年度)	(月)			(年度)	(月)			(年度)	(月)			
MSM除く男性(n)	0	0	0	0	0	0	16	9	11	9	11	7	12	75			
(%)	0.0%	0.0%	0.0%	0.0%	0.0%	0.0%	48.5%	37.5%	45.8%	90.0%	55.0%	31.8%	63.2%	49.3%			
女性(n)	0	0	0	0	0	0	16	15	13	1	9	15	7	76			
(%)	0.0%	0.0%	0.0%	0.0%	0.0%	0.0%	48.5%	62.5%	54.2%	10.0%	45.0%	68.2%	36.8%	50.0%			
その他(n)	0	0	0	0	0	0	0	0	0	0	0	0	0	0			
(%)	0.0%	0.0%	0.0%	0.0%	0.0%	0.0%	0.0%	0.0%	0.0%	0.0%	0.0%	0.0%	0.0%	0.0%			
MSM(n)	0	0	0	0	0	0	1	0	0	0	0	0	0	1			
(%)	0.0%	0.0%	0.0%	0.0%	0.0%	0.0%	3.0%	0.0%	0.0%	0.0%	0.0%	0.0%	0.0%	0.7%			



○ 性別および性指向別の基本属性 (年齢割合・居住地割合)

大阪府四條畷保健所



MSM(Men who have sex with men)を除く男性																		
(年度)		2007				2008				2009				2010				合計
(月)		1-3	4-6	7-9	10-12	1-3	4-6	7-9	10-12	1-3	4-6	7-9	10-12	1-3	4-6	7-9	10-12	
(計)		0	0	0	0	0	16	9	11	9	11	7	12	75				
年齢	24歳以下	0%	0%	0%	0%	0%	13%	11%	9%	11%	9%	43%	17%	15%				
	25-34歳	0%	0%	0%	0%	0%	38%	67%	18%	11%	45%	14%	50%	36%				
	35-44歳	0%	0%	0%	0%	0%	13%	22%	36%	11%	18%	29%	8%	19%				
	45-54歳	0%	0%	0%	0%	0%	6%	0%	18%	11%	27%	14%	0%	11%				
	55歳以上	0%	0%	0%	0%	0%	31%	0%	18%	56%	0%	0%	25%	20%				
	無回答	0%	0%	0%	0%	0%	0%	0%	0%	0%	0%	0%	0%	0%				
居住地	滋賀県	0%	0%	0%	0%	0%	0%	0%	9%	0%	0%	0%	0%	1%				
	京都府	0%	0%	0%	0%	0%	0%	0%	0%	0%	0%	0%	0%	0%				
	大阪府	0%	0%	0%	0%	0%	88%	100%	91%	100%	100%	100%	100%	96%				
	兵庫県	0%	0%	0%	0%	0%	6%	0%	0%	0%	0%	0%	0%	1%				
	奈良県	0%	0%	0%	0%	0%	6%	0%	0%	0%	0%	0%	0%	1%				
	和歌山県	0%	0%	0%	0%	0%	0%	0%	0%	0%	0%	0%	0%	0%				

女性																		
(年度)		2007				2008				2009				2010				合計
(月)		1-3	4-6	7-9	10-12	1-3	4-6	7-9	10-12	1-3	4-6	7-9	10-12	1-3	4-6	7-9	10-12	
(計)		0	0	0	0	0	16	15	13	1	9	15	7	76				
年齢	24歳以下	0%	0%	0%	0%	0%	63%	33%	15%	100%	33%	47%	14%	38%				
	25-34歳	0%	0%	0%	0%	0%	25%	33%	15%	0%	44%	33%	14%	28%				
	35-44歳	0%	0%	0%	0%	0%	13%	13%	38%	0%	22%	20%	57%	24%				
	45-54歳	0%	0%	0%	0%	0%	0%	20%	15%	0%	0%	0%	0%	7%				
	55歳以上	0%	0%	0%	0%	0%	0%	0%	15%	0%	0%	0%	14%	4%				
	無回答	0%	0%	0%	0%	0%	0%	0%	0%	0%	0%	0%	0%	0%				
居住地	滋賀県	0%	0%	0%	0%	0%	0%	0%	0%	0%	0%	0%	0%	0%				
	京都府	0%	0%	0%	0%	0%	0%	0%	0%	0%	0%	0%	0%	0%				
	大阪府	0%	0%	0%	0%	0%	100%	100%	100%	100%	100%	100%	100%	100%				
	兵庫県	0%	0%	0%	0%	0%	0%	0%	0%	0%	0%	0%	0%	0%				
	奈良県	0%	0%	0%	0%	0%	0%	0%	0%	0%	0%	0%	0%	0%				
	和歌山県	0%	0%	0%	0%	0%	0%	0%	0%	0%	0%	0%	0%	0%				

Men who have sex with men																		
(年度)		2007				2008				2009				2010				合計
(月)		1-3	4-6	7-9	10-12	1-3	4-6	7-9	10-12	1-3	4-6	7-9	10-12	1-3	4-6	7-9	10-12	
(計)		0	0	0	0	0	1	0	0	0	0	0	0	1				
年齢	24歳以下	0%	0%	0%	0%	0%	0%	0%	0%	0%	0%	0%	0%	0%				
	25-34歳	0%	0%	0%	0%	0%	0%	0%	0%	0%	0%	0%	0%	0%				
	35-44歳	0%	0%	0%	0%	0%	0%	0%	0%	0%	0%	0%	0%	0%				
	45-54歳	0%	0%	0%	0%	0%	0%	0%	0%	0%	0%	0%	0%	0%				
	55歳以上	0%	0%	0%	0%	0%	100%	0%	0%	0%	0%	0%	0%	100%				
	無回答	0%	0%	0%	0%	0%	0%	0%	0%	0%	0%	0%	0%	0%				
居住地	滋賀県	0%	0%	0%	0%	0%	0%	0%	0%	0%	0%	0%	0%	0%				
	京都府	0%	0%	0%	0%	0%	0%	0%	0%	0%	0%	0%	0%	0%				
	大阪府	0%	0%	0%	0%	0%	100%	0%	0%	0%	0%	0%	0%	100%				
	兵庫県	0%	0%	0%	0%	0%	0%	0%	0%	0%	0%	0%	0%	0%				
	奈良県	0%	0%	0%	0%	0%	0%	0%	0%	0%	0%	0%	0%	0%				
	和歌山県	0%	0%	0%	0%	0%	0%	0%	0%	0%	0%	0%	0%	0%				



京阪神(保健所)

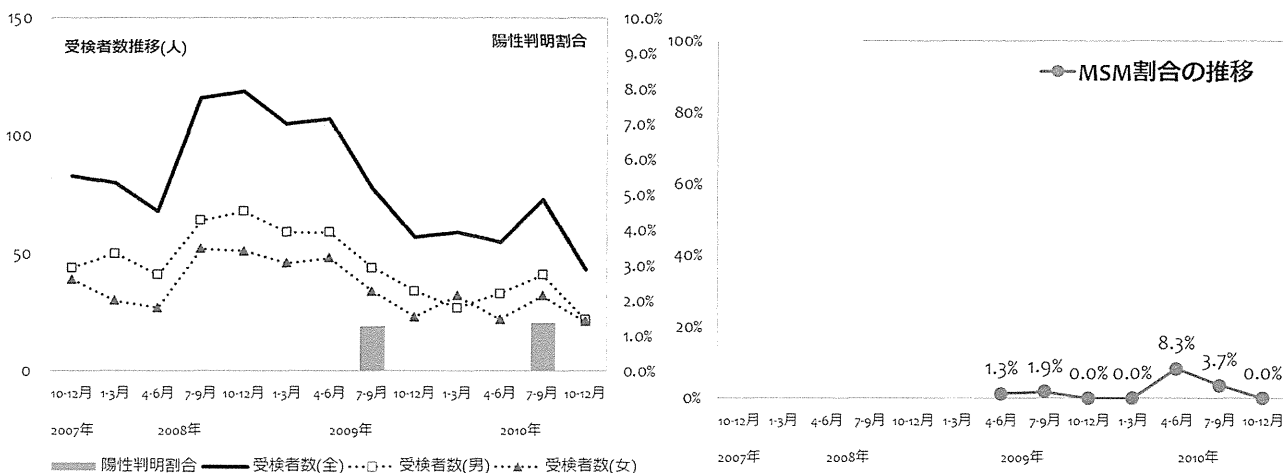
大阪府八尾保健所



	2007				2008				2009				2010				合計
	(年度)	(月)			(年度)	(月)			(年度)	(月)			(年度)	(月)			
男性受検者数	44	50	41	64	68	59	59	44	34	27	33	41	22	586			
男性陽性者数	0	0	0	0	0	0	0	1	0	0	0	1	0	2			
女性受検者数	39	30	27	52	51	46	48	34	23	32	22	32	21	457			
女性陽性者数	0	0	0	0	0	0	0	0	0	0	0	0	0	0			
その他受検者数	0	0	0	0	0	0	0	0	0	0	0	0	0	0			
その他陽性者数	0	0	0	0	0	0	0	0	0	0	0	0	0	0			
受検者計	83	80	68	116	119	105	107	78	57	59	55	73	43	1043			
陽性者計	0	0	0	0	0	0	0	1	0	0	0	1	0	2			
陽性判明割合(男)	0.00%	0.00%	0.00%	0.00%	0.00%	0.00%	0.00%	2.27%	0.00%	0.00%	0.00%	2.44%	0.00%	0.34%			
陽性判明割合(女)	0.00%	0.00%	0.00%	0.00%	0.00%	0.00%	0.00%	0.00%	0.00%	0.00%	0.00%	0.00%	0.00%	0.00%			
陽性判明割合(全)	0.00%	0.00%	0.00%	0.00%	0.00%	0.00%	0.00%	1.28%	0.00%	0.00%	0.00%	1.37%	0.00%	0.19%			

	2007				2008				2009				2010				合計
	(年度)	(月)			(年度)	(月)			(年度)	(月)			(年度)	(月)			
回収数	0	0	0	0	0	0	82	54	34	49	39	55	37	350			
回収率	0.0%	0.0%	0.0%	0.0%	0.0%	0.0%	76.6%	69.2%	59.6%	83.1%	70.9%	75.3%	86.0%				
分析対象者数	0	0	0	0	0	0	75	53	32	48	36	54	35	333			
有効回収率	0.0%	0.0%	0.0%	0.0%	0.0%	0.0%	70.1%	67.9%	56.1%	81.4%	65.5%	74.0%	81.4%				

	2007				2008				2009				2010				合計
	(年度)	(月)			(年度)	(月)			(年度)	(月)			(年度)	(月)			
MSM除く男性(n)	0	0	0	0	0	0	35	31	19	21	18	26	19	169			
(%)	0.0%	0.0%	0.0%	0.0%	0.0%	0.0%	46.7%	58.5%	59.4%	43.8%	50.0%	48.1%	54.3%	50.8%			
女性(n)	0	0	0	0	0	0	39	21	13	27	15	26	16	157			
(%)	0.0%	0.0%	0.0%	0.0%	0.0%	0.0%	52.0%	39.6%	40.6%	56.3%	41.7%	48.1%	45.7%	47.1%			
その他(n)	0	0	0	0	0	0	0	0	0	0	0	0	0	0			
(%)	0.0%	0.0%	0.0%	0.0%	0.0%	0.0%	0.0%	0.0%	0.0%	0.0%	0.0%	0.0%	0.0%	0.0%			
MSM(n)	0	0	0	0	0	0	1	1	0	0	3	2	0	7			
(%)	0.0%	0.0%	0.0%	0.0%	0.0%	0.0%	1.3%	1.9%	0.0%	0.0%	8.3%	3.7%	0.0%	2.1%			



○ 性別および性指向別の基本属性 (年齢割合・居住地割合)

大阪府八尾保健所



MSM(Men who have sex with men)を除く男性																		
(年度)		2007				2008				2009				2010				合計
(月)		1-3	4-6	7-9	10-12	1-3	4-6	7-9	10-12	1-3	4-6	7-9	10-12	1-3	4-6	7-9	10-12	
(計)		0	0	0	0	0	35	31	19	21	18	26	19	169				
年齢	24歳以下	0%	0%	0%	0%	0%	34%	19%	11%	29%	11%	31%	11%	22%				
	25-34歳	0%	0%	0%	0%	0%	31%	39%	32%	38%	67%	31%	37%	38%				
	35-44歳	0%	0%	0%	0%	0%	14%	23%	21%	14%	11%	19%	26%	18%				
	45-54歳	0%	0%	0%	0%	0%	9%	3%	32%	19%	6%	8%	5%	11%				
	55歳以上	0%	0%	0%	0%	0%	11%	16%	5%	0%	6%	12%	21%	11%				
	無回答	0%	0%	0%	0%	0%	0%	0%	0%	0%	0%	0%	0%	0%				
居住地	滋賀県	0%	0%	0%	0%	0%	0%	0%	0%	0%	0%	0%	0%	0%				
	京都府	0%	0%	0%	0%	0%	0%	6%	0%	0%	0%	0%	0%	1%				
	大阪府	0%	0%	0%	0%	0%	94%	90%	100%	100%	100%	100%	95%	96%				
	兵庫県	0%	0%	0%	0%	0%	0%	0%	0%	0%	0%	0%	0%	0%				
	奈良県	0%	0%	0%	0%	0%	6%	3%	0%	0%	0%	0%	5%	2%				
	和歌山県	0%	0%	0%	0%	0%	0%	0%	0%	0%	0%	0%	0%	0%				

女性																		
(年度)		2007				2008				2009				2010				合計
(月)		1-3	4-6	7-9	10-12	1-3	4-6	7-9	10-12	1-3	4-6	7-9	10-12	1-3	4-6	7-9	10-12	
(計)		0	0	0	0	0	39	21	13	27	15	26	16	157				
年齢	24歳以下	0%	0%	0%	0%	0%	59%	29%	54%	41%	40%	31%	44%	43%				
	25-34歳	0%	0%	0%	0%	0%	26%	33%	23%	33%	40%	38%	44%	33%				
	35-44歳	0%	0%	0%	0%	0%	13%	29%	0%	19%	13%	19%	6%	15%				
	45-54歳	0%	0%	0%	0%	0%	3%	0%	15%	0%	0%	4%	0%	3%				
	55歳以上	0%	0%	0%	0%	0%	0%	5%	0%	7%	7%	4%	0%	3%				
	無回答	0%	0%	0%	0%	0%	0%	5%	8%	0%	0%	4%	6%	3%				
居住地	滋賀県	0%	0%	0%	0%	0%	0%	0%	0%	0%	0%	0%	0%	0%				
	京都府	0%	0%	0%	0%	0%	0%	0%	0%	0%	0%	0%	0%	0%				
	大阪府	0%	0%	0%	0%	0%	97%	100%	100%	100%	100%	92%	100%	98%				
	兵庫県	0%	0%	0%	0%	0%	0%	0%	0%	0%	0%	0%	0%	0%				
	奈良県	0%	0%	0%	0%	0%	0%	0%	0%	0%	0%	8%	0%	1%				
	和歌山県	0%	0%	0%	0%	0%	3%	0%	0%	0%	0%	0%	0%	1%				

Men who have sex with men																		
(年度)		2007				2008				2009				2010				合計
(月)		1-3	4-6	7-9	10-12	1-3	4-6	7-9	10-12	1-3	4-6	7-9	10-12	1-3	4-6	7-9	10-12	
(計)		0	0	0	0	0	1	1	0	0	3	2	0	7				
年齢	24歳以下	0%	0%	0%	0%	0%	100%	0%	0%	0%	33%	0%	0%	29%				
	25-34歳	0%	0%	0%	0%	0%	0%	0%	0%	0%	33%	0%	0%	14%				
	35-44歳	0%	0%	0%	0%	0%	0%	0%	0%	0%	33%	100%	0%	43%				
	45-54歳	0%	0%	0%	0%	0%	0%	0%	0%	0%	0%	0%	0%	0%				
	55歳以上	0%	0%	0%	0%	0%	0%	100%	0%	0%	0%	0%	0%	14%				
	無回答	0%	0%	0%	0%	0%	0%	0%	0%	0%	0%	0%	0%	0%				
居住地	滋賀県	0%	0%	0%	0%	0%	0%	0%	0%	0%	0%	0%	0%	0%				
	京都府	0%	0%	0%	0%	0%	0%	0%	0%	0%	0%	0%	0%	0%				
	大阪府	0%	0%	0%	0%	0%	100%	100%	0%	0%	100%	100%	0%	100%				
	兵庫県	0%	0%	0%	0%	0%	0%	0%	0%	0%	0%	0%	0%	0%				
	奈良県	0%	0%	0%	0%	0%	0%	0%	0%	0%	0%	0%	0%	0%				
	和歌山県	0%	0%	0%	0%	0%	0%	0%	0%	0%	0%	0%	0%	0%				

京阪神(保健所)

大阪府藤井寺保健所



表 I

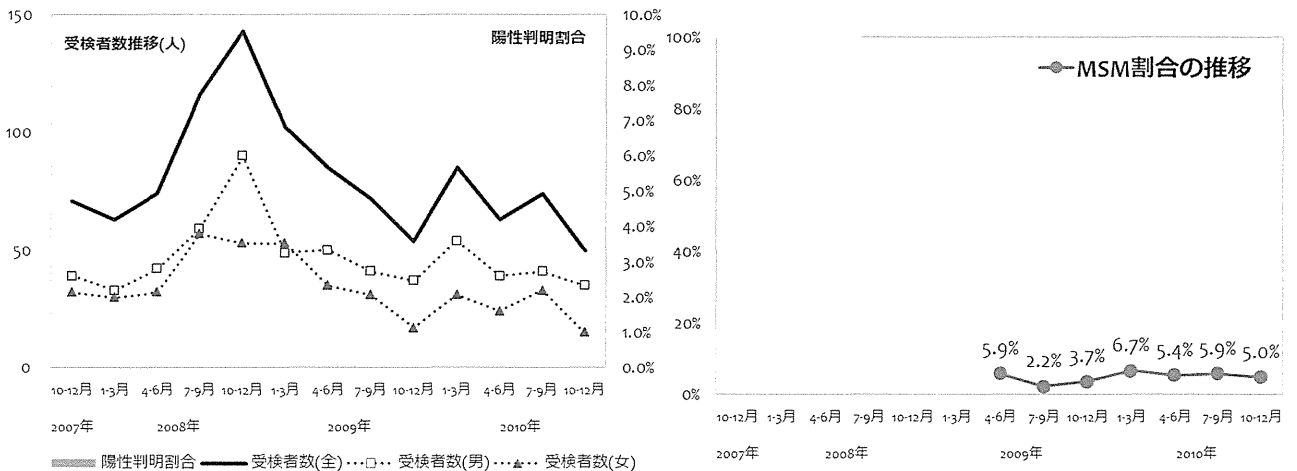
	2007				2008				2009				2010				合計
	(年度)	(月)			(年度)	(月)			(年度)	(月)			(年度)	(月)			
男性受検者数	39	33	42	59	90	49	50	41	37	54	39	41	35	609			
男性陽性者数	0	0	0	0	0	0	0	0	0	0	0	0	0	0			
女性受検者数	32	30	32	57	53	53	35	31	17	31	24	33	15	443			
女性陽性者数	0	0	0	0	0	0	0	0	0	0	0	0	0	0			
その他受検者数	0	0	0	0	0	0	0	0	0	0	0	0	0	0			
その他陽性者数	0	0	0	0	0	0	0	0	0	0	0	0	0	0			
受検者計	71	63	74	116	143	102	85	72	54	85	63	74	50	1052			
陽性者計	0	0	0	0	0	0	0	0	0	0	0	0	0	0			
陽性判明割合(男)	0.00%	0.00%	0.00%	0.00%	0.00%	0.00%	0.00%	0.00%	0.00%	0.00%	0.00%	0.00%	0.00%	0.00%			
陽性判明割合(女)	0.00%	0.00%	0.00%	0.00%	0.00%	0.00%	0.00%	0.00%	0.00%	0.00%	0.00%	0.00%	0.00%	0.00%			
陽性判明割合(全)	0.00%	0.00%	0.00%	0.00%	0.00%	0.00%	0.00%	0.00%	0.00%	0.00%	0.00%	0.00%	0.00%	0.00%			

表 II

	2007				2008				2009				2010				合計
	(年度)	(月)			(年度)	(月)			(年度)	(月)			(年度)	(月)			
回収数	0	0	0	0	0	0	53	45	29	47	39	54	42	309			
回収率	0.0%	0.0%	0.0%	0.0%	0.0%	0.0%	62.4%	62.5%	53.7%	55.3%	61.9%	73.0%	84.0%				
分析対象者数	0	0	0	0	0	0	51	45	27	45	37	51	40	296			
有効回収率	0.0%	0.0%	0.0%	0.0%	0.0%	0.0%	60.0%	62.5%	50.0%	52.9%	58.7%	68.9%	80.0%				

表 III

	2007				2008				2009				2010				合計
	(年度)	(月)			(年度)	(月)			(年度)	(月)			(年度)	(月)			
MSM除く男性(n)	0	0	0	0	0	0	27	28	20	25	14	21	28	163			
(%)	0.0%	0.0%	0.0%	0.0%	0.0%	0.0%	52.9%	62.2%	74.1%	55.6%	37.8%	41.2%	70.0%	55.1%			
女性(n)	0	0	0	0	0	0	21	16	6	17	21	27	10	118			
(%)	0.0%	0.0%	0.0%	0.0%	0.0%	0.0%	41.2%	35.6%	22.2%	37.8%	56.8%	52.9%	25.0%	39.9%			
その他(n)	0	0	0	0	0	0	0	0	0	0	0	0	0	0			
(%)	0.0%	0.0%	0.0%	0.0%	0.0%	0.0%	0.0%	0.0%	0.0%	0.0%	0.0%	0.0%	0.0%	0.0%			
MSM(n)	0	0	0	0	0	0	3	1	1	3	2	3	2	15			
(%)	0.0%	0.0%	0.0%	0.0%	0.0%	0.0%	5.9%	2.2%	3.7%	6.7%	5.4%	5.9%	5.0%	5.1%			



○ 性別および性指向別の基本属性 (年齢割合・居住地割合)

大阪府藤井寺保健所



MSM(Men who have sex with men)を除く男性																											
(年度)		2007				2008				2009				2010				合計									
(月)		1-3		4-6		7-9		10-12		1-3		4-6		7-9		10-12											
(計)		0		0		0		0		0		27		28		20		25		14		21		28		163	
年齢	24歳以下	0%	0%	0%	0%	0%	0%	0%	0%	44%	14%	15%	32%	36%	19%	14%	25%										
	25-34歳	0%	0%	0%	0%	0%	0%	0%	0%	30%	36%	40%	36%	29%	24%	36%											
	35-44歳	0%	0%	0%	0%	0%	0%	0%	0%	7%	36%	25%	16%	29%	38%	29%											
	45-54歳	0%	0%	0%	0%	0%	0%	0%	0%	4%	11%	10%	4%	7%	10%	7%											
	55歳以上	0%	0%	0%	0%	0%	0%	0%	0%	15%	4%	10%	12%	0%	10%	11%											
	無回答	0%	0%	0%	0%	0%	0%	0%	0%	0%	0%	0%	0%	0%	0%	4%											
居住地	滋賀県	0%	0%	0%	0%	0%	0%	0%	0%	0%	0%	0%	0%	0%	5%	0%											
	京都府	0%	0%	0%	0%	0%	0%	0%	0%	0%	0%	0%	0%	0%	0%	0%											
	大阪府	0%	0%	0%	0%	0%	0%	0%	0%	100%	96%	100%	96%	100%	95%	100%											
	兵庫県	0%	0%	0%	0%	0%	0%	0%	0%	0%	0%	0%	4%	0%	0%	0%											
	奈良県	0%	0%	0%	0%	0%	0%	0%	0%	0%	4%	0%	0%	0%	0%	0%											
	和歌山県	0%	0%	0%	0%	0%	0%	0%	0%	0%	0%	0%	0%	0%	0%	0%											

女性																											
(年度)		2007				2008				2009				2010				合計									
(月)		1-3		4-6		7-9		10-12		1-3		4-6		7-9		10-12											
(計)		0		0		0		0		0		21		16		6		17		21		27		10		118	
年齢	24歳以下	0%	0%	0%	0%	0%	0%	0%	0%	71%	50%	67%	71%	71%	41%	40%											
	25-34歳	0%	0%	0%	0%	0%	0%	0%	0%	19%	31%	33%	12%	10%	37%	30%											
	35-44歳	0%	0%	0%	0%	0%	0%	0%	0%	10%	6%	0%	18%	14%	15%	20%											
	45-54歳	0%	0%	0%	0%	0%	0%	0%	0%	0%	0%	0%	0%	5%	4%	10%											
	55歳以上	0%	0%	0%	0%	0%	0%	0%	0%	0%	6%	0%	0%	0%	0%	0%											
	無回答	0%	0%	0%	0%	0%	0%	0%	0%	0%	6%	0%	0%	0%	4%	0%											
居住地	滋賀県	0%	0%	0%	0%	0%	0%	0%	0%	0%	0%	0%	0%	0%	0%	0%											
	京都府	0%	0%	0%	0%	0%	0%	0%	0%	0%	0%	0%	0%	0%	0%	0%											
	大阪府	0%	0%	0%	0%	0%	0%	0%	0%	95%	100%	100%	100%	100%	96%	100%											
	兵庫県	0%	0%	0%	0%	0%	0%	0%	0%	0%	0%	0%	0%	0%	4%	0%											
	奈良県	0%	0%	0%	0%	0%	0%	0%	0%	5%	0%	0%	0%	0%	0%	0%											
	和歌山県	0%	0%	0%	0%	0%	0%	0%	0%	0%	0%	0%	0%	0%	0%	0%											

Men who have sex with men																											
(年度)		2007				2008				2009				2010				合計									
(月)		1-3		4-6		7-9		10-12		1-3		4-6		7-9		10-12											
(計)		0		0		0		0		0		3		1		1		3		2		3		2		15	
年齢	24歳以下	0%	0%	0%	0%	0%	0%	0%	0%	67%	100%	0%	67%	0%	67%	0%											
	25-34歳	0%	0%	0%	0%	0%	0%	0%	0%	33%	0%	100%	0%	50%	0%	50%											
	35-44歳	0%	0%	0%	0%	0%	0%	0%	0%	0%	0%	0%	33%	50%	33%	50%											
	45-54歳	0%	0%	0%	0%	0%	0%	0%	0%	0%	0%	0%	0%	0%	0%	0%											
	55歳以上	0%	0%	0%	0%	0%	0%	0%	0%	0%	0%	0%	0%	0%	0%	0%											
	無回答	0%	0%	0%	0%	0%	0%	0%	0%	0%	0%	0%	0%	0%	0%	0%											
居住地	滋賀県	0%	0%	0%	0%	0%	0%	0%	0%	0%	0%	0%	0%	0%	0%	0%											
	京都府	0%	0%	0%	0%	0%	0%	0%	0%	0%	0%	0%	0%	0%	0%	0%											
	大阪府	0%	0%	0%	0%	0%	0%	0%	0%	100%	100%	100%	100%	100%	100%	100%											
	兵庫県	0%	0%	0%	0%	0%	0%	0%	0%	0%	0%	0%	0%	0%	0%	0%											
	奈良県	0%	0%	0%	0%	0%	0%	0%	0%	0%	0%	0%	0%	0%	0%	0%											
	和歌山県	0%	0%	0%	0%	0%	0%	0%	0%	0%	0%	0%	0%	0%	0%	0%											

京阪神(保健所)

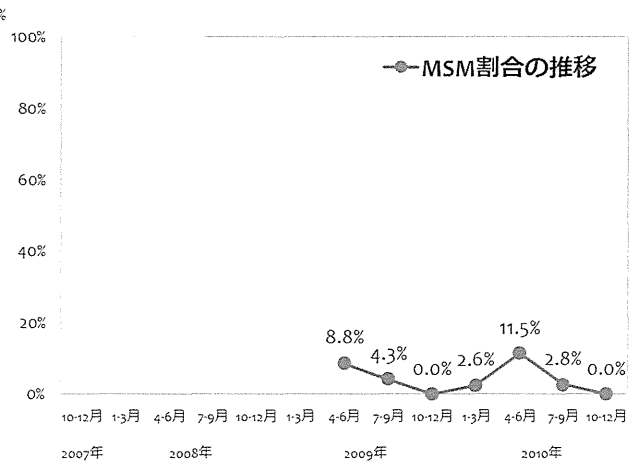
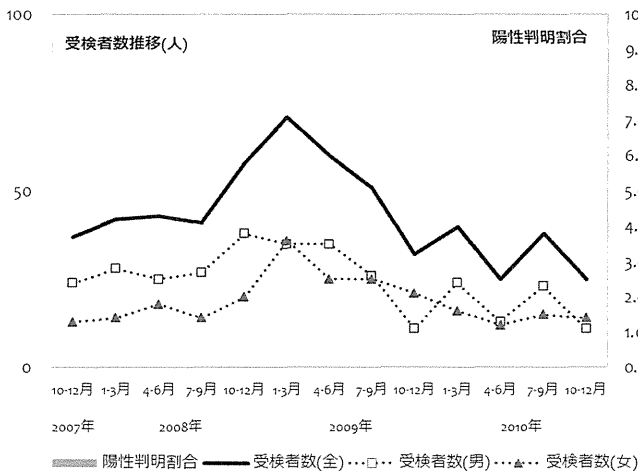
大阪府富田林保健所



	(年度)	2007				2008				2009				2010				合計
		(月)				1-3	4-6	7-9	10-12	1-3	4-6	7-9	10-12	1-3	4-6	7-9	10-12	
男性受検者数		24	28	25	27	38	35	35	26	11	24	13	23	11	320			
男性陽性者数		0	0	0	0	0	0	0	0	0	0	0	0	0	0			
女性受検者数		13	14	18	14	20	36	25	25	21	16	12	15	14	243			
女性陽性者数		0	0	0	0	0	0	0	0	0	0	0	0	0	0			
その他受検者数		0	0	0	0	0	0	0	0	0	0	0	0	0	0			
その他陽性者数		0	0	0	0	0	0	0	0	0	0	0	0	0	0			
受検者計		37	42	43	41	58	71	60	51	32	40	25	38	25	563			
陽性者計		0	0	0	0	0	0	0	0	0	0	0	0	0	0			
陽性判明割合(男)		0.00%	0.00%	0.00%	0.00%	0.00%	0.00%	0.00%	0.00%	0.00%	0.00%	0.00%	0.00%	0.00%	0.00%			
陽性判明割合(女)		0.00%	0.00%	0.00%	0.00%	0.00%	0.00%	0.00%	0.00%	0.00%	0.00%	0.00%	0.00%	0.00%	0.00%			
陽性判明割合(全)		0.00%	0.00%	0.00%	0.00%	0.00%	0.00%	0.00%	0.00%	0.00%	0.00%	0.00%	0.00%	0.00%	0.00%			

	(年度)	2007				2008				2009				2010				合計
		(月)				1-3	4-6	7-9	10-12	1-3	4-6	7-9	10-12	1-3	4-6	7-9	10-12	
回収数		0	0	0	0	0	0	60	50	31	40	27	36	26	270			
回収率		0.0%	0.0%	0.0%	0.0%	0.0%	0.0%	100.0%	98.0%	96.9%	100.0%	108.0%	94.7%	104.0%				
分析対象者数		0	0	0	0	0	0	57	47	30	39	26	36	26	261			
有効回収率		0.0%	0.0%	0.0%	0.0%	0.0%	0.0%	95.0%	92.2%	93.8%	97.5%	104.0%	94.7%	104.0%				

	(年度)	2007				2008				2009				2010				合計
		(月)				1-3	4-6	7-9	10-12	1-3	4-6	7-9	10-12	1-3	4-6	7-9	10-12	
MSM除く男性(n)		0	0	0	0	0	0	27	22	10	23	11	22	11	126			
(%)		0.0%	0.0%	0.0%	0.0%	0.0%	0.0%	47.4%	46.8%	33.3%	59.0%	42.3%	61.1%	42.3%	48.3%			
女性(n)		0	0	0	0	0	0	25	23	20	15	12	13	15	123			
(%)		0.0%	0.0%	0.0%	0.0%	0.0%	0.0%	43.9%	48.9%	66.7%	38.5%	46.2%	36.1%	57.7%	47.1%			
その他(n)		0	0	0	0	0	0	0	0	0	0	0	0	0	0			
(%)		0.0%	0.0%	0.0%	0.0%	0.0%	0.0%	0.0%	0.0%	0.0%	0.0%	0.0%	0.0%	0.0%	0.0%			
MSM(n)		0	0	0	0	0	0	5	2	0	1	3	1	0	12			
(%)		0.0%	0.0%	0.0%	0.0%	0.0%	0.0%	8.8%	4.3%	0.0%	2.6%	11.5%	2.8%	0.0%	4.6%			



○ 性別および性指向別の基本属性 (年齢割合・居住地割合)

大阪府富田林保健所

MSM(Men who have sex with men)を除く男性																											
(年度)		2007				2008				2009				2010				合計									
(月)		1-3		4-6		7-9		10-12		1-3		4-6		7-9		10-12											
(計)		0		0		0		0		0		27		22		10		23		11		22		11		126	
年齢	24歳以下	0%	0%	0%	0%	0%	0%	0%	0%	0%	0%	15%	5%	0%	22%	18%	36%	18%	17%								
	25-34歳	0%	0%	0%	0%	0%	0%	0%	0%	0%	0%	22%	36%	20%	35%	27%	41%	18%	30%								
	35-44歳	0%	0%	0%	0%	0%	0%	0%	0%	0%	0%	22%	27%	50%	17%	45%	5%	36%	25%								
	45-54歳	0%	0%	0%	0%	0%	0%	0%	0%	0%	0%	15%	18%	20%	9%	0%	14%	0%	12%								
	55歳以上	0%	0%	0%	0%	0%	0%	0%	0%	0%	0%	26%	14%	10%	17%	9%	5%	27%	16%								
	無回答	0%	0%	0%	0%	0%	0%	0%	0%	0%	0%	0%	0%	0%	0%	0%	0%	0%	0%								
居住地	滋賀県	0%	0%	0%	0%	0%	0%	0%	0%	0%	0%	0%	0%	0%	0%	0%	0%	0%	0%								
	京都府	0%	0%	0%	0%	0%	0%	0%	0%	0%	0%	0%	0%	0%	0%	0%	0%	0%	0%								
	大阪府	0%	0%	0%	0%	0%	0%	0%	0%	0%	0%	100%	100%	100%	91%	91%	100%	91%	97%								
	兵庫県	0%	0%	0%	0%	0%	0%	0%	0%	0%	0%	0%	0%	0%	4%	9%	0%	0%	2%								
	奈良県	0%	0%	0%	0%	0%	0%	0%	0%	0%	0%	0%	0%	0%	4%	0%	0%	0%	1%								
	和歌山県	0%	0%	0%	0%	0%	0%	0%	0%	0%	0%	0%	0%	0%	0%	0%	0%	9%	1%								



女性																											
(年度)		2007				2008				2009				2010				合計									
(月)		1-3		4-6		7-9		10-12		1-3		4-6		7-9		10-12											
(計)		0		0		0		0		0		25		23		20		15		12		13		15		123	
年齢	24歳以下	0%	0%	0%	0%	0%	0%	0%	0%	0%	0%	36%	35%	55%	60%	25%	54%	33%	42%								
	25-34歳	0%	0%	0%	0%	0%	0%	0%	0%	0%	0%	44%	61%	40%	20%	25%	46%	27%	40%								
	35-44歳	0%	0%	0%	0%	0%	0%	0%	0%	0%	0%	4%	4%	5%	13%	8%	0%	20%	7%								
	45-54歳	0%	0%	0%	0%	0%	0%	0%	0%	0%	0%	12%	0%	0%	7%	33%	0%	20%	9%								
	55歳以上	0%	0%	0%	0%	0%	0%	0%	0%	0%	0%	4%	0%	0%	0%	8%	0%	0%	2%								
	無回答	0%	0%	0%	0%	0%	0%	0%	0%	0%	0%	0%	0%	0%	0%	0%	0%	0%	0%								
居住地	滋賀県	0%	0%	0%	0%	0%	0%	0%	0%	0%	0%	0%	0%	0%	0%	0%	0%	0%	0%								
	京都府	0%	0%	0%	0%	0%	0%	0%	0%	0%	0%	0%	0%	0%	0%	0%	0%	0%	0%								
	大阪府	0%	0%	0%	0%	0%	0%	0%	0%	0%	0%	100%	100%	100%	100%	100%	100%	100%	100%								
	兵庫県	0%	0%	0%	0%	0%	0%	0%	0%	0%	0%	0%	0%	0%	0%	0%	0%	0%	0%								
	奈良県	0%	0%	0%	0%	0%	0%	0%	0%	0%	0%	0%	0%	0%	0%	0%	0%	0%	0%								
	和歌山県	0%	0%	0%	0%	0%	0%	0%	0%	0%	0%	0%	0%	0%	0%	0%	0%	0%	0%								

Men who have sex with men																											
(年度)		2007				2008				2009				2010				合計									
(月)		1-3		4-6		7-9		10-12		1-3		4-6		7-9		10-12											
(計)		0		0		0		0		0		5		2		0		1		3		1		0		12	
年齢	24歳以下	0%	0%	0%	0%	0%	0%	0%	0%	0%	0%	20%	100%	0%	100%	33%	0%	0%	42%								
	25-34歳	0%	0%	0%	0%	0%	0%	0%	0%	0%	0%	40%	0%	0%	0%	0%	100%	0%	25%								
	35-44歳	0%	0%	0%	0%	0%	0%	0%	0%	0%	0%	40%	0%	0%	0%	67%	0%	0%	33%								
	45-54歳	0%	0%	0%	0%	0%	0%	0%	0%	0%	0%	0%	0%	0%	0%	0%	0%	0%	0%								
	55歳以上	0%	0%	0%	0%	0%	0%	0%	0%	0%	0%	0%	0%	0%	0%	0%	0%	0%	0%								
	無回答	0%	0%	0%	0%	0%	0%	0%	0%	0%	0%	0%	0%	0%	0%	0%	0%	0%	0%								
居住地	滋賀県	0%	0%	0%	0%	0%	0%	0%	0%	0%	0%	0%	0%	0%	0%	0%	0%	0%	0%								
	京都府	0%	0%	0%	0%	0%	0%	0%	0%	0%	0%	0%	0%	0%	0%	0%	0%	0%	0%								
	大阪府	0%	0%	0%	0%	0%	0%	0%	0%	0%	0%	80%	100%	0%	100%	100%	100%	0%	92%								
	兵庫県	0%	0%	0%	0%	0%	0%	0%	0%	0%	0%	0%	0%	0%	0%	0%	0%	0%	0%								
	奈良県	0%	0%	0%	0%	0%	0%	0%	0%	0%	0%	0%	0%	0%	0%	0%	0%	0%	0%								
	和歌山県	0%	0%	0%	0%	0%	0%	0%	0%	0%	0%	20%	0%	0%	0%	0%	0%	0%	8%								

京阪神(保健所)

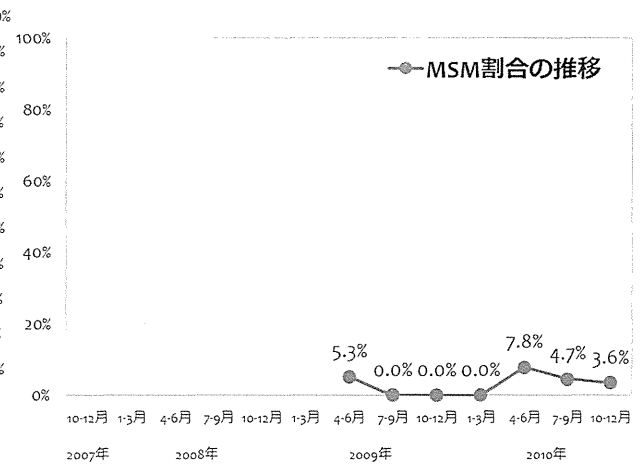
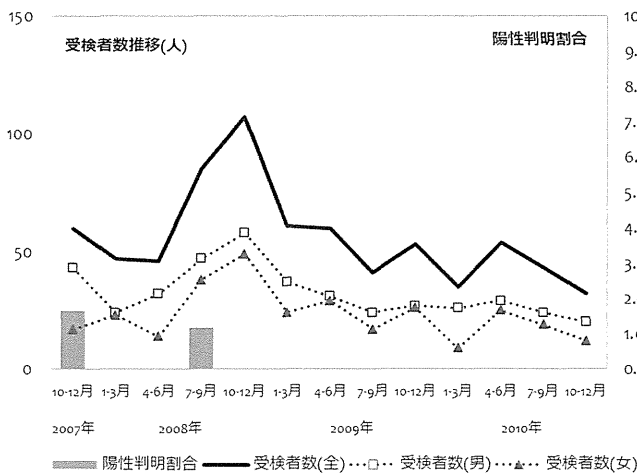
大阪府和泉保健所



(年度)	2007				2008				2009				2010				合計
	(月)	1-3	4-6	7-9	10-12	1-3	4-6	7-9	10-12	1-3	4-6	7-9	10-12				
男性受検者数	43	24	32	47	58	37	31	24	27	26	29	24	20	422			
男性陽性者数	1	0	0	1	0	0	0	0	0	0	0	0	0	2			
女性受検者数	17	23	14	38	49	24	29	17	26	9	25	19	12	302			
女性陽性者数	0	0	0	0	0	0	0	0	0	0	0	0	0	0			
その他受検者数	0	0	0	0	0	0	0	0	0	0	0	0	0	0			
その他陽性者数	0	0	0	0	0	0	0	0	0	0	0	0	0	0			
受検者計	60	47	46	85	107	61	60	41	53	35	54	43	32	724			
陽性者計	1	0	0	1	0	0	0	0	0	0	0	0	0	2			
陽性判明割合(男)	2.33%	0.00%	0.00%	2.13%	0.00%	0.00%	0.00%	0.00%	0.00%	0.00%	0.00%	0.00%	0.00%	0.47%			
陽性判明割合(女)	0.00%	0.00%	0.00%	0.00%	0.00%	0.00%	0.00%	0.00%	0.00%	0.00%	0.00%	0.00%	0.00%	0.00%			
陽性判明割合(全)	1.67%	0.00%	0.00%	1.18%	0.00%	0.00%	0.00%	0.00%	0.00%	0.00%	0.00%	0.00%	0.00%	0.28%			

(年度)	2007				2008				2009				2010				合計
	(月)	1-3	4-6	7-9	10-12	1-3	4-6	7-9	10-12	1-3	4-6	7-9	10-12				
回収数	0	0	0	0	0	0	59	41	54	31	52	43	30	310			
回収率	0.0%	0.0%	0.0%	0.0%	0.0%	0.0%	98.3%	100.0%	101.9%	88.6%	96.3%	100.0%	93.8%				
分析対象者数	0	0	0	0	0	0	57	39	49	30	51	43	28	297			
有効回収率	0.0%	0.0%	0.0%	0.0%	0.0%	0.0%	95.0%	95.1%	92.5%	85.7%	94.4%	100.0%	87.5%				

(年度)	2007				2008				2009				2010				合計
	(月)	1-3	4-6	7-9	10-12	1-3	4-6	7-9	10-12	1-3	4-6	7-9	10-12				
MSM除く男性(n)	0	0	0	0	0	0	24	20	25	22	25	22	15	153			
(%)	0.0%	0.0%	0.0%	0.0%	0.0%	0.0%	42.1%	51.3%	51.0%	73.3%	49.0%	51.2%	53.6%	51.5%			
女性(n)	0	0	0	0	0	0	30	19	24	8	22	19	12	134			
(%)	0.0%	0.0%	0.0%	0.0%	0.0%	0.0%	52.6%	48.7%	49.0%	26.7%	43.1%	44.2%	42.9%	45.1%			
その他(n)	0	0	0	0	0	0	0	0	0	0	0	0	0	0			
(%)	0.0%	0.0%	0.0%	0.0%	0.0%	0.0%	0.0%	0.0%	0.0%	0.0%	0.0%	0.0%	0.0%	0.0%			
MSM(n)	0	0	0	0	0	0	3	0	0	0	4	2	1	10			
(%)	0.0%	0.0%	0.0%	0.0%	0.0%	0.0%	5.3%	0.0%	0.0%	0.0%	7.8%	4.7%	3.6%	3.4%			



○ 性別および性指向別の基本属性 (年齢割合・居住地割合)

大阪府和泉保健所

MSM(Men who have sex with men)を除く男性																		
(年度)		2007				2008				2009				2010				合計
(月)		1-3		4-6		7-9		10-12		1-3		4-6		7-9		10-12		
(計)		0	0	0	0	0	0	24	20	25	22	25	22	15	153			
年齢	24歳以下	0%	0%	0%	0%	0%	0%	21%	30%	0%	18%	28%	27%	13%	20%			
	25-34歳	0%	0%	0%	0%	0%	0%	54%	40%	44%	27%	28%	23%	33%	36%			
	35-44歳	0%	0%	0%	0%	0%	0%	21%	5%	40%	32%	12%	14%	27%	22%			
	45-54歳	0%	0%	0%	0%	0%	0%	4%	10%	12%	9%	16%	18%	7%	11%			
	55歳以上	0%	0%	0%	0%	0%	0%	0%	15%	4%	14%	16%	18%	20%	12%			
	無回答	0%	0%	0%	0%	0%	0%	0%	0%	0%	0%	0%	0%	0%	0%			
居住地	滋賀県	0%	0%	0%	0%	0%	0%	0%	0%	0%	0%	0%	0%	0%	0%			
	京都府	0%	0%	0%	0%	0%	0%	0%	0%	0%	0%	0%	0%	0%	0%			
	大阪府	0%	0%	0%	0%	0%	0%	100%	95%	100%	95%	92%	95%	100%	97%			
	兵庫県	0%	0%	0%	0%	0%	0%	0%	0%	0%	0%	0%	0%	0%	0%			
	奈良県	0%	0%	0%	0%	0%	0%	0%	0%	0%	0%	0%	0%	0%	0%			
	和歌山県	0%	0%	0%	0%	0%	0%	0%	5%	0%	5%	8%	5%	0%	3%			



女性																		
(年度)		2007				2008				2009				2010				合計
(月)		1-3		4-6		7-9		10-12		1-3		4-6		7-9		10-12		
(計)		0	0	0	0	0	0	30	19	24	8	22	19	12	134			
年齢	24歳以下	0%	0%	0%	0%	0%	0%	53%	53%	29%	63%	18%	32%	17%	37%			
	25-34歳	0%	0%	0%	0%	0%	0%	23%	21%	29%	25%	27%	53%	42%	31%			
	35-44歳	0%	0%	0%	0%	0%	0%	13%	11%	33%	13%	32%	5%	33%	20%			
	45-54歳	0%	0%	0%	0%	0%	0%	3%	5%	4%	0%	14%	11%	0%	6%			
	55歳以上	0%	0%	0%	0%	0%	0%	3%	0%	0%	0%	5%	0%	8%	2%			
	無回答	0%	0%	0%	0%	0%	0%	3%	11%	4%	0%	5%	0%	0%	4%			
居住地	滋賀県	0%	0%	0%	0%	0%	0%	0%	0%	0%	0%	0%	0%	0%	0%			
	京都府	0%	0%	0%	0%	0%	0%	0%	0%	0%	0%	0%	5%	0%	1%			
	大阪府	0%	0%	0%	0%	0%	0%	100%	100%	100%	100%	100%	95%	100%	99%			
	兵庫県	0%	0%	0%	0%	0%	0%	0%	0%	0%	0%	0%	0%	0%	0%			
	奈良県	0%	0%	0%	0%	0%	0%	0%	0%	0%	0%	0%	0%	0%	0%			
	和歌山県	0%	0%	0%	0%	0%	0%	0%	0%	0%	0%	0%	0%	0%	0%			

Men who have sex with men																		
(年度)		2007				2008				2009				2010				合計
(月)		1-3		4-6		7-9		10-12		1-3		4-6		7-9		10-12		
(計)		0	0	0	0	0	0	3	0	0	0	4	2	1	10			
年齢	24歳以下	0%	0%	0%	0%	0%	0%	67%	0%	0%	0%	0%	0%	0%	100%	30%		
	25-34歳	0%	0%	0%	0%	0%	0%	0%	0%	0%	0%	100%	100%	0%	60%			
	35-44歳	0%	0%	0%	0%	0%	0%	33%	0%	0%	0%	0%	0%	0%	10%			
	45-54歳	0%	0%	0%	0%	0%	0%	0%	0%	0%	0%	0%	0%	0%	0%			
	55歳以上	0%	0%	0%	0%	0%	0%	0%	0%	0%	0%	0%	0%	0%	0%			
	無回答	0%	0%	0%	0%	0%	0%	0%	0%	0%	0%	0%	0%	0%	0%			
居住地	滋賀県	0%	0%	0%	0%	0%	0%	0%	0%	0%	0%	0%	0%	0%	0%			
	京都府	0%	0%	0%	0%	0%	0%	0%	0%	0%	0%	0%	0%	0%	0%			
	大阪府	0%	0%	0%	0%	0%	0%	100%	0%	0%	0%	100%	100%	100%	100%			
	兵庫県	0%	0%	0%	0%	0%	0%	0%	0%	0%	0%	0%	0%	0%	0%			
	奈良県	0%	0%	0%	0%	0%	0%	0%	0%	0%	0%	0%	0%	0%	0%			
	和歌山県	0%	0%	0%	0%	0%	0%	0%	0%	0%	0%	0%	0%	0%	0%			



京阪神(保健所)

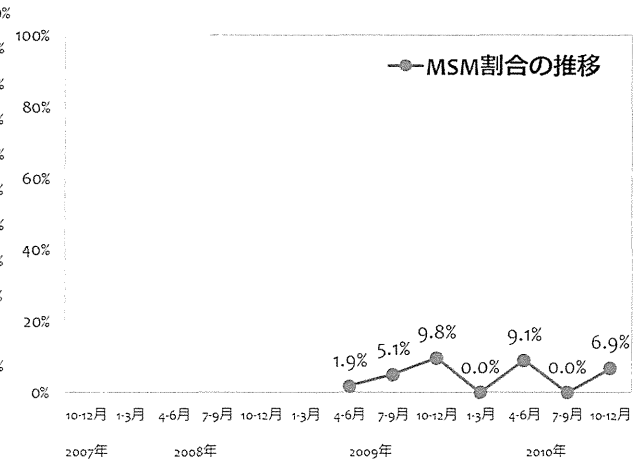
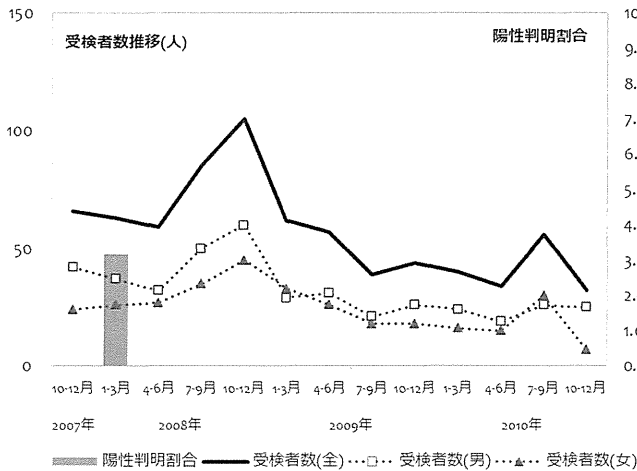
大阪府岸和田保健所



	(年度)	2007				2008				2009				2010				合計
	(月)	1-3	4-6	7-9	10-12	1-3	4-6	7-9	10-12	1-3	4-6	7-9	10-12	1-3	4-6	7-9	10-12	
男性受検者数		42	37	32	50	60	29	31	21	26	24	19	26	25	422			
男性陽性者数		0	2	0	0	0	0	0	0	0	0	0	0	0	2			
女性受検者数		24	26	27	35	45	33	26	18	18	16	15	30	7	320			
女性陽性者数		0	0	0	0	0	0	0	0	0	0	0	0	0	0			
その他受検者数		0	0	0	0	0	0	0	0	0	0	0	0	0	0			
その他陽性者数		0	0	0	0	0	0	0	0	0	0	0	0	0	0			
受検者計		66	63	59	85	105	62	57	39	44	40	34	56	32	742			
陽性者計		0	2	0	0	0	0	0	0	0	0	0	0	0	2			
陽性判明割合(男)		0.00%	5.41%	0.00%	0.00%	0.00%	0.00%	0.00%	0.00%	0.00%	0.00%	0.00%	0.00%	0.00%	0.47%			
陽性判明割合(女)		0.00%	0.00%	0.00%	0.00%	0.00%	0.00%	0.00%	0.00%	0.00%	0.00%	0.00%	0.00%	0.00%	0.00%			
陽性判明割合(全)		0.00%	3.17%	0.00%	0.00%	0.00%	0.00%	0.00%	0.00%	0.00%	0.00%	0.00%	0.00%	0.00%	0.27%			

	(年度)	2007				2008				2009				2010				合計
	(月)	1-3	4-6	7-9	10-12	1-3	4-6	7-9	10-12	1-3	4-6	7-9	10-12	1-3	4-6	7-9	10-12	
回収数		0	0	0	0	0	56	40	43	38	33	55	33	298				
回収率		0.0%	0.0%	0.0%	0.0%	0.0%	98.2%	102.6%	97.7%	95.0%	97.1%	98.2%	103.1%					
分析対象者数		0	0	0	0	0	54	39	41	36	33	54	29	286				
有効回収率		0.0%	0.0%	0.0%	0.0%	0.0%	94.7%	100.0%	93.2%	90.0%	97.1%	96.4%	90.6%					

	(年度)	2007				2008				2009				2010				合計
	(月)	1-3	4-6	7-9	10-12	1-3	4-6	7-9	10-12	1-3	4-6	7-9	10-12	1-3	4-6	7-9	10-12	
MSM除く男性(n)		0	0	0	0	0	29	18	21	21	15	26	20	150				
(%)		0.0%	0.0%	0.0%	0.0%	0.0%	53.7%	46.2%	51.2%	58.3%	45.5%	48.1%	69.0%	52.4%				
女性(n)		0	0	0	0	0	24	19	16	15	15	28	7	124				
(%)		0.0%	0.0%	0.0%	0.0%	0.0%	44.4%	48.7%	39.0%	41.7%	45.5%	51.9%	24.1%	43.4%				
その他(n)		0	0	0	0	0	0	0	0	0	0	0	0	0				
(%)		0.0%	0.0%	0.0%	0.0%	0.0%	0.0%	0.0%	0.0%	0.0%	0.0%	0.0%	0.0%	0.0%				
MSM(n)		0	0	0	0	0	1	2	4	0	3	0	2	12				
(%)		0.0%	0.0%	0.0%	0.0%	0.0%	1.9%	5.1%	9.8%	0.0%	9.1%	0.0%	6.9%	4.2%				



○ 性別および性指向別の基本属性 (年齢割合・居住地割合)

大阪府岸和田保健所



MSM(Men who have sex with men)を除く男性														
(年度)	2007	2008				2009				2010				合計
(月)	1-3	4-6	7-9	10-12	1-3	4-6	7-9	10-12	1-3	4-6	7-9	10-12		
(計)	0	0	0	0	0	29	18	21	21	15	26	20	150	
年齢	24歳以下	0%	0%	0%	0%	0%	21%	6%	10%	19%	27%	8%	25%	16%
	25-34歳	0%	0%	0%	0%	0%	45%	44%	38%	24%	13%	19%	30%	31%
	35-44歳	0%	0%	0%	0%	0%	28%	22%	24%	19%	27%	46%	25%	28%
	45-54歳	0%	0%	0%	0%	0%	3%	11%	14%	14%	7%	8%	10%	9%
	55歳以上	0%	0%	0%	0%	0%	3%	17%	14%	24%	27%	19%	10%	15%
	無回答	0%	0%	0%	0%	0%	0%	0%	0%	0%	0%	0%	0%	0%
居住地	滋賀県	0%	0%	0%	0%	0%	0%	0%	0%	0%	0%	0%	0%	0%
	京都府	0%	0%	0%	0%	0%	0%	0%	0%	0%	0%	0%	0%	0%
	大阪府	0%	0%	0%	0%	0%	97%	100%	100%	100%	100%	92%	100%	98%
	兵庫県	0%	0%	0%	0%	0%	0%	0%	0%	0%	0%	0%	0%	0%
	奈良県	0%	0%	0%	0%	0%	0%	0%	0%	0%	0%	0%	0%	0%
	和歌山県	0%	0%	0%	0%	0%	3%	0%	0%	0%	0%	8%	0%	2%

女性														
(年度)	2007	2008				2009				2010				合計
(月)	1-3	4-6	7-9	10-12	1-3	4-6	7-9	10-12	1-3	4-6	7-9	10-12		
(計)	0	0	0	0	0	24	19	16	15	15	28	7	124	
年齢	24歳以下	0%	0%	0%	0%	0%	63%	53%	25%	60%	47%	29%	57%	46%
	25-34歳	0%	0%	0%	0%	0%	29%	32%	56%	20%	33%	36%	43%	35%
	35-44歳	0%	0%	0%	0%	0%	8%	5%	6%	13%	7%	25%	0%	11%
	45-54歳	0%	0%	0%	0%	0%	0%	11%	13%	7%	13%	0%	0%	6%
	55歳以上	0%	0%	0%	0%	0%	0%	0%	0%	0%	0%	11%	0%	2%
	無回答	0%	0%	0%	0%	0%	0%	0%	0%	0%	0%	0%	0%	0%
居住地	滋賀県	0%	0%	0%	0%	0%	0%	0%	0%	0%	0%	0%	0%	0%
	京都府	0%	0%	0%	0%	0%	0%	0%	0%	0%	0%	0%	0%	0%
	大阪府	0%	0%	0%	0%	0%	100%	100%	100%	100%	100%	100%	100%	100%
	兵庫県	0%	0%	0%	0%	0%	0%	0%	0%	0%	0%	0%	0%	0%
	奈良県	0%	0%	0%	0%	0%	0%	0%	0%	0%	0%	0%	0%	0%
	和歌山県	0%	0%	0%	0%	0%	0%	0%	0%	0%	0%	0%	0%	0%

Men who have sex with men														
(年度)	2007	2008				2009				2010				合計
(月)	1-3	4-6	7-9	10-12	1-3	4-6	7-9	10-12	1-3	4-6	7-9	10-12		
(計)	0	0	0	0	0	1	2	4	0	3	0	2	12	
年齢	24歳以下	0%	0%	0%	0%	0%	0%	0%	50%	0%	33%	0%	0%	25%
	25-34歳	0%	0%	0%	0%	0%	100%	50%	25%	0%	33%	0%	50%	42%
	35-44歳	0%	0%	0%	0%	0%	0%	0%	0%	0%	0%	0%	0%	0%
	45-54歳	0%	0%	0%	0%	0%	0%	50%	25%	0%	33%	0%	50%	33%
	55歳以上	0%	0%	0%	0%	0%	0%	0%	0%	0%	0%	0%	0%	0%
	無回答	0%	0%	0%	0%	0%	0%	0%	0%	0%	0%	0%	0%	0%
居住地	滋賀県	0%	0%	0%	0%	0%	0%	0%	0%	0%	0%	0%	0%	0%
	京都府	0%	0%	0%	0%	0%	0%	0%	0%	0%	0%	0%	0%	0%
	大阪府	0%	0%	0%	0%	0%	100%	100%	100%	0%	100%	0%	100%	100%
	兵庫県	0%	0%	0%	0%	0%	0%	0%	0%	0%	0%	0%	0%	0%
	奈良県	0%	0%	0%	0%	0%	0%	0%	0%	0%	0%	0%	0%	0%
	和歌山県	0%	0%	0%	0%	0%	0%	0%	0%	0%	0%	0%	0%	0%

京阪神(保健所)

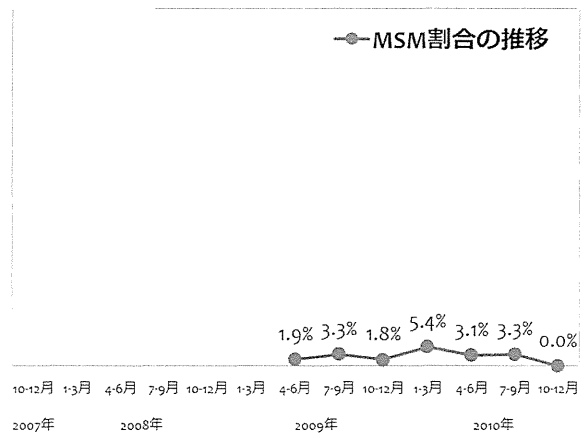
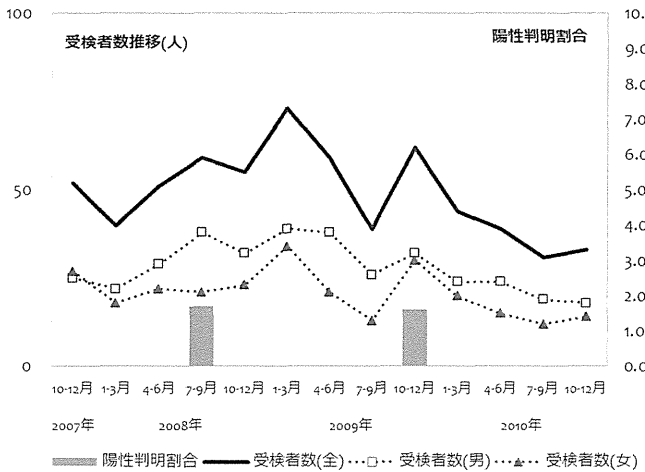
大阪府泉佐野保健所



	(年度)	2007				2008				2009				2010				合計
		(月)				1-3	4-6	7-9	10-12	1-3	4-6	7-9	10-12	1-3	4-6	7-9	10-12	
男性受検者数		25	22	29	38	32	39	38	26	32	24	24	19	18	366			
男性陽性者数		0	0	0	1	0	0	0	0	1	0	0	0	0	2			
女性受検者数		27	18	22	21	23	34	21	13	30	20	15	12	14	270			
女性陽性者数		0	0	0	0	0	0	0	0	0	0	0	0	0	0			
その他受検者数		0	0	0	0	0	0	0	0	0	0	0	0	1	1			
その他陽性者数		0	0	0	0	0	0	0	0	0	0	0	0	0	0			
受検者計		52	40	51	59	55	73	59	39	62	44	39	31	33	637			
陽性者計		0	0	0	1	0	0	0	0	1	0	0	0	0	2			
陽性判明割合(男)		0.00%	0.00%	0.00%	2.63%	0.00%	0.00%	0.00%	0.00%	3.13%	0.00%	0.00%	0.00%	0.00%	0.55%			
陽性判明割合(女)		0.00%	0.00%	0.00%	0.00%	0.00%	0.00%	0.00%	0.00%	0.00%	0.00%	0.00%	0.00%	0.00%	0.00%			
陽性判明割合(全)		0.00%	0.00%	0.00%	1.69%	0.00%	0.00%	0.00%	0.00%	1.61%	0.00%	0.00%	0.00%	0.00%	0.31%			

	(年度)	2007				2008				2009				2010				合計
		(月)				1-3	4-6	7-9	10-12	1-3	4-6	7-9	10-12	1-3	4-6	7-9	10-12	
回収数		0	0	0	0	0	0	54	34	55	41	33	32	30	279			
回収率		0.0%	0.0%	0.0%	0.0%	0.0%	0.0%	91.5%	87.2%	88.7%	93.2%	84.6%	103.2%	90.9%				
分析対象者数		0	0	0	0	0	0	52	30	55	37	32	30	29	265			
有効回収率		0.0%	0.0%	0.0%	0.0%	0.0%	0.0%	88.1%	76.9%	88.7%	84.1%	82.1%	96.8%	87.9%				

	(年度)	2007				2008				2009				2010				合計
		(月)				1-3	4-6	7-9	10-12	1-3	4-6	7-9	10-12	1-3	4-6	7-9	10-12	
MSM除く男性(n)		0	0	0	0	0	0	30	18	30	16	21	17	16	148			
(%)		0.0%	0.0%	0.0%	0.0%	0.0%	0.0%	57.7%	60.0%	54.5%	43.2%	65.6%	56.7%	55.2%	55.8%			
女性(n)		0	0	0	0	0	0	21	11	24	19	10	12	13	110			
(%)		0.0%	0.0%	0.0%	0.0%	0.0%	0.0%	40.4%	36.7%	43.6%	51.4%	31.3%	40.0%	44.8%	41.5%			
その他(n)		0	0	0	0	0	0	0	0	0	0	0	0	0	0			
(%)		0.0%	0.0%	0.0%	0.0%	0.0%	0.0%	0.0%	0.0%	0.0%	0.0%	0.0%	0.0%	0.0%	0.0%			
MSM(n)		0	0	0	0	0	0	1	1	1	2	1	1	0	7			
(%)		0.0%	0.0%	0.0%	0.0%	0.0%	0.0%	1.9%	3.3%	1.8%	5.4%	3.1%	3.3%	0.0%	2.6%			



○ 性別および性指向別の基本属性 (年齢割合・居住地割合)

大阪府泉佐野保健所



MSM(Men who have sex with men)を除く男性																		
	(年度)	2007				2008				2009				2010				合計
		(月)				(月)				(月)				(月)				
		1-3	4-6	7-9	10-12	1-3	4-6	7-9	10-12	1-3	4-6	7-9	10-12	1-3	4-6	7-9	10-12	
(計)	0	0	0	0	0	0	30	18	30	16	21	17	16	148				
年齢	24歳以下	0%	0%	0%	0%	0%	0%	0%	0%	43%	22%	33%	25%	38%	29%	19%	32%	
	25-34歳	0%	0%	0%	0%	0%	0%	0%	0%	17%	33%	33%	31%	19%	24%	31%	26%	
	35-44歳	0%	0%	0%	0%	0%	0%	0%	0%	23%	6%	10%	19%	19%	24%	13%	16%	
	45-54歳	0%	0%	0%	0%	0%	0%	0%	0%	7%	6%	7%	6%	5%	12%	6%	7%	
	55歳以上	0%	0%	0%	0%	0%	0%	0%	0%	10%	33%	17%	19%	19%	12%	31%	19%	
	無回答	0%	0%	0%	0%	0%	0%	0%	0%	0%	0%	0%	0%	0%	0%	0%	0%	
居住地	滋賀県	0%	0%	0%	0%	0%	0%	0%	0%	0%	0%	0%	0%	0%	0%	0%	0%	
	京都府	0%	0%	0%	0%	0%	0%	0%	0%	0%	0%	0%	0%	0%	0%	0%	0%	
	大阪府	0%	0%	0%	0%	0%	0%	0%	0%	100%	100%	97%	100%	100%	94%	100%	99%	
	兵庫県	0%	0%	0%	0%	0%	0%	0%	0%	0%	0%	0%	0%	0%	0%	0%	0%	
	奈良県	0%	0%	0%	0%	0%	0%	0%	0%	0%	0%	0%	0%	0%	6%	0%	1%	
	和歌山県	0%	0%	0%	0%	0%	0%	0%	0%	0%	0%	3%	0%	0%	0%	0%	1%	

女性																		
	(年度)	2007				2008				2009				2010				合計
		(月)				(月)				(月)				(月)				
		1-3	4-6	7-9	10-12	1-3	4-6	7-9	10-12	1-3	4-6	7-9	10-12	1-3	4-6	7-9	10-12	
(計)	0	0	0	0	0	0	21	11	24	19	10	12	13	110				
年齢	24歳以下	0%	0%	0%	0%	0%	0%	0%	0%	57%	73%	46%	16%	50%	42%	31%	44%	
	25-34歳	0%	0%	0%	0%	0%	0%	0%	0%	19%	27%	46%	74%	50%	33%	46%	43%	
	35-44歳	0%	0%	0%	0%	0%	0%	0%	0%	19%	0%	8%	0%	0%	25%	15%	10%	
	45-54歳	0%	0%	0%	0%	0%	0%	0%	0%	0%	0%	0%	5%	0%	0%	0%	1%	
	55歳以上	0%	0%	0%	0%	0%	0%	0%	0%	0%	0%	0%	0%	0%	0%	8%	1%	
	無回答	0%	0%	0%	0%	0%	0%	0%	0%	5%	0%	0%	5%	0%	0%	0%	2%	
居住地	滋賀県	0%	0%	0%	0%	0%	0%	0%	0%	0%	0%	0%	0%	0%	0%	0%	0%	
	京都府	0%	0%	0%	0%	0%	0%	0%	0%	0%	0%	0%	0%	0%	0%	0%	0%	
	大阪府	0%	0%	0%	0%	0%	0%	0%	0%	100%	100%	100%	100%	90%	92%	100%	98%	
	兵庫県	0%	0%	0%	0%	0%	0%	0%	0%	0%	0%	0%	0%	0%	0%	0%	0%	
	奈良県	0%	0%	0%	0%	0%	0%	0%	0%	0%	0%	0%	0%	0%	0%	0%	0%	
	和歌山県	0%	0%	0%	0%	0%	0%	0%	0%	0%	0%	0%	0%	10%	8%	0%	2%	

Men who have sex with men																		
	(年度)	2007				2008				2009				2010				合計
		(月)				(月)				(月)				(月)				
		1-3	4-6	7-9	10-12	1-3	4-6	7-9	10-12	1-3	4-6	7-9	10-12	1-3	4-6	7-9	10-12	
(計)	0	0	0	0	0	0	1	1	1	2	1	1	0	7				
年齢	24歳以下	0%	0%	0%	0%	0%	0%	0%	0%	100%	0%	0%	50%	100%	100%	0%	57%	
	25-34歳	0%	0%	0%	0%	0%	0%	0%	0%	0%	100%	0%	0%	0%	0%	0%	14%	
	35-44歳	0%	0%	0%	0%	0%	0%	0%	0%	0%	0%	0%	50%	0%	0%	0%	14%	
	45-54歳	0%	0%	0%	0%	0%	0%	0%	0%	0%	0%	100%	0%	0%	0%	0%	14%	
	55歳以上	0%	0%	0%	0%	0%	0%	0%	0%	0%	0%	0%	0%	0%	0%	0%	0%	
	無回答	0%	0%	0%	0%	0%	0%	0%	0%	0%	0%	0%	0%	0%	0%	0%	0%	
居住地	滋賀県	0%	0%	0%	0%	0%	0%	0%	0%	0%	0%	0%	0%	0%	0%	0%	0%	
	京都府	0%	0%	0%	0%	0%	0%	0%	0%	0%	0%	0%	0%	0%	0%	0%	0%	
	大阪府	0%	0%	0%	0%	0%	0%	0%	0%	100%	100%	100%	100%	100%	100%	0%	100%	
	兵庫県	0%	0%	0%	0%	0%	0%	0%	0%	0%	0%	0%	0%	0%	0%	0%	0%	
	奈良県	0%	0%	0%	0%	0%	0%	0%	0%	0%	0%	0%	0%	0%	0%	0%	0%	
	和歌山県	0%	0%	0%	0%	0%	0%	0%	0%	0%	0%	0%	0%	0%	0%	0%	0%	