

○ 性別および性指向別の基本属性（年齢割合・居住地割合）

千葉県健康福祉部疾病対策課



MSM(Men who have sex with men)を除く男性																		
	(年度)	2007				2008				2009				2010				合計
		(月)				(月)				(月)				(月)				
		1-3	4-6	7-9	10-12	1-3	4-6	7-9	10-12	1-3	4-6	7-9	10-12	1-3	4-6	7-9	10-12	
	(計)	0	0	0	0	0	0	24	50	0	29	95	26	224				
年齢	24歳以下	0%	0%	0%	0%	0%	13%	10%	14%	16%	12%	13%						
	25-34歳	0%	0%	0%	0%	0%	46%	50%	41%	60%	46%	52%						
	35-44歳	0%	0%	0%	0%	0%	21%	24%	31%	16%	35%	22%						
	45-54歳	0%	0%	0%	0%	0%	8%	12%	14%	7%	4%	9%						
	55歳以上	0%	0%	0%	0%	0%	8%	2%	0%	0%	4%	2%						
	無回答	0%	0%	0%	0%	0%	4%	2%	0%	1%	0%	1%						
居住地	茨城県	0%	0%	0%	0%	0%	0%	4%	3%	5%	0%	4%						
	栃木県	0%	0%	0%	0%	0%	0%	0%	0%	1%	0%	0%						
	群馬県	0%	0%	0%	0%	0%	0%	0%	0%	0%	0%	0%						
	埼玉県	0%	0%	0%	0%	0%	0%	0%	0%	5%	0%	2%						
	千葉県	0%	0%	0%	0%	0%	100%	94%	97%	51%	81%	75%						
	東京都	0%	0%	0%	0%	0%	0%	2%	0%	31%	19%	16%						
	神奈川県	0%	0%	0%	0%	0%	0%	0%	0%	7%	0%	3%						

女性																		
	(年度)	2007				2008				2009				2010				合計
		(月)				(月)				(月)				(月)				
		1-3	4-6	7-9	10-12	1-3	4-6	7-9	10-12	1-3	4-6	7-9	10-12	1-3	4-6	7-9	10-12	
	(計)	0	0	0	0	0	0	12	14	0	15	55	11	107				
年齢	24歳以下	0%	0%	0%	0%	0%	25%	36%	33%	25%	18%	27%						
	25-34歳	0%	0%	0%	0%	0%	42%	57%	67%	65%	64%	62%						
	35-44歳	0%	0%	0%	0%	0%	33%	7%	0%	7%	18%	10%						
	45-54歳	0%	0%	0%	0%	0%	0%	0%	0%	0%	0%	0%						
	55歳以上	0%	0%	0%	0%	0%	0%	0%	0%	0%	0%	0%						
	無回答	0%	0%	0%	0%	0%	0%	0%	0%	2%	0%	1%						
居住地	茨城県	0%	0%	0%	0%	0%	0%	0%	0%	7%	0%	4%						
	栃木県	0%	0%	0%	0%	0%	0%	0%	0%	0%	0%	0%						
	群馬県	0%	0%	0%	0%	0%	0%	0%	0%	0%	0%	0%						
	埼玉県	0%	0%	0%	0%	0%	8%	7%	0%	7%	0%	6%						
	千葉県	0%	0%	0%	0%	0%	83%	79%	87%	53%	73%	66%						
	東京都	0%	0%	0%	0%	0%	8%	14%	13%	29%	27%	22%						
	神奈川県	0%	0%	0%	0%	0%	0%	0%	0%	4%	0%	2%						

Men who have sex with men																		
	(年度)	2007				2008				2009				2010				合計
		(月)				(月)				(月)				(月)				
		1-3	4-6	7-9	10-12	1-3	4-6	7-9	10-12	1-3	4-6	7-9	10-12	1-3	4-6	7-9	10-12	
	(計)	0	0	0	0	0	0	6	21	0	10	38	9	84				
年齢	24歳以下	0%	0%	0%	0%	0%	33%	0%	10%	21%	0%	13%						
	25-34歳	0%	0%	0%	0%	0%	17%	76%	60%	45%	67%	55%						
	35-44歳	0%	0%	0%	0%	0%	50%	19%	30%	32%	22%	29%						
	45-54歳	0%	0%	0%	0%	0%	0%	5%	0%	3%	0%	2%						
	55歳以上	0%	0%	0%	0%	0%	0%	0%	0%	0%	11%	1%						
	無回答	0%	0%	0%	0%	0%	0%	0%	0%	0%	0%	0%						
居住地	茨城県	0%	0%	0%	0%	0%	0%	0%	0%	3%	0%	1%						
	栃木県	0%	0%	0%	0%	0%	0%	0%	0%	0%	0%	0%						
	群馬県	0%	0%	0%	0%	0%	0%	0%	0%	0%	0%	0%						
	埼玉県	0%	0%	0%	0%	0%	0%	0%	10%	5%	0%	4%						
	千葉県	0%	0%	0%	0%	0%	100%	71%	90%	47%	56%	63%						
	東京都	0%	0%	0%	0%	0%	0%	24%	0%	39%	44%	29%						
	神奈川県	0%	0%	0%	0%	0%	0%	5%	0%	5%	0%	4%						

# 大阪府・大阪市

本報告では

2007年10月から2010年12月の間のHIV抗体検査受検者の動向について、4半期毎の経時的な推移を示した。

- 表Ⅰ 各施設における受検件数報告および陽性判明報告<sup>\*1</sup>を基に作成し陽性判明割合を算出した。
- 表Ⅱ (回収率) 表Ⅰの受検件数報告を分母として5分間アンケート<sup>\*2</sup>の回収数から算出した。  
(有効回収率) 表Ⅰの受検件数報告を分母として5分間アンケート<sup>\*2</sup>の回収数から算出した。
- 表Ⅲ 5分間アンケート<sup>\*2</sup>回答者の分析対象者における性別および性指向割合を示した。

## 【分析について】

年齢に関しては24歳以下、25-34歳、35-44歳、45-54歳、55歳以上に分類した。最高齢93歳、最少齢は13歳：12歳以下は回答の信頼性が薄く、自発的な受検ではない可能性が高く無回答に含めた。

居住地に関しては近畿ブロック(滋賀県・京都府・大阪府・兵庫県・奈良県・三重県)に居住していると回答している人を対象として分析した。これらはエイズ発生動向委員会による報告形式を考慮した。

性別および性指向割合は、性別と不安な感染経路についての項目によって分類した。分析対象者数が少ないため個人特定のリスクを考慮し、性別および性指向別の基本属性に関しては%表記のみを用いた。

\*1 「エイズ予防のための戦略研究 エイズ相談・HIV抗体検査等実施状況」報告票

\*2 各施設における研究協力期間にHIV抗体検査受検者を対象とした質問紙調査「5分間アンケート」



表Ⅰ

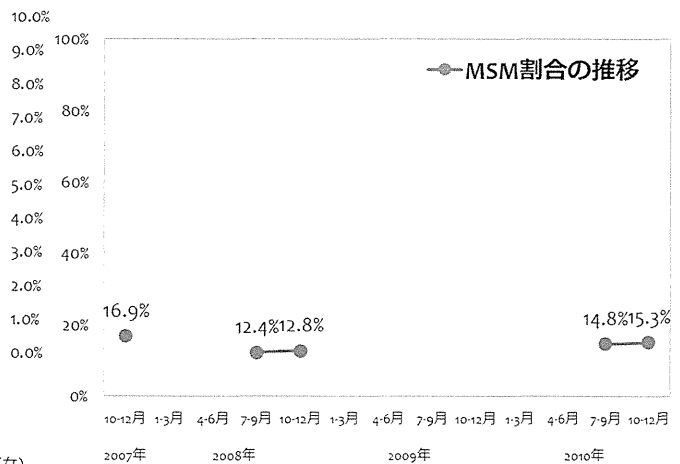
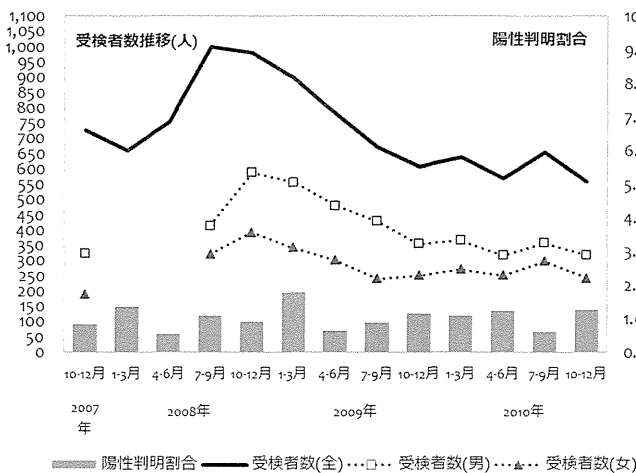
	2007				2008				2009				2010				合計	
	(年度)	(月)				(月)				(月)				(月)				
		1-3	4-6	7-9	10-12	1-3	4-6	7-9	10-12	1-3	4-6	7-9	10-12	1-3	4-6	7-9	10-12	
男性受検者数	324	0	0	414	588	557	480	430	356	367	318	358	317	4509				
男性陽性者数	6	7	4	11	9	16	5	6	7	6	7	4	7	95				
女性受検者数	189	0	0	322	393	342	301	240	251	271	251	298	242	3100				
女性陽性者数	0	0	0	0	0	0	0	0	0	1	0	0	0	1				
その他受検者数	212	661	753	265	0	0	0	0	0	0	0	0	0	1891				
その他陽性者数	0	2	0	0	0	0	0	0	0	0	0	0	0	2				
受検者計	725	661	753	1001	981	899	781	670	607	638	569	656	559	9500				
陽性者計	6	9	4	11	9	16	5	6	7	7	7	4	7	98				
陽性判明割合(男)	1.85%	0.00%	0.00%	2.66%	1.53%	2.87%	1.04%	1.40%	1.97%	1.63%	2.20%	1.12%	2.21%	2.11%				
陽性判明割合(女)	0.00%	0.00%	0.00%	0.00%	0.00%	0.00%	0.00%	0.00%	0.00%	0.37%	0.00%	0.00%	0.00%	0.03%				
陽性判明割合(全)	0.83%	1.36%	0.53%	1.10%	0.92%	1.78%	0.64%	0.90%	1.15%	1.10%	1.23%	0.61%	1.25%	1.03%				

表Ⅱ

	2007				2008				2009				2010				合計	
	(年度)	(月)				(月)				(月)				(月)				
		1-3	4-6	7-9	10-12	1-3	4-6	7-9	10-12	1-3	4-6	7-9	10-12	1-3	4-6	7-9	10-12	
回収数	445	0	0	379	559	0	0	0	0	0	0	410	515	2308				
回収率	61.4%	0.0%	0.0%	37.9%	57.0%	0.0%	0.0%	0.0%	0.0%	0.0%	0.0%	62.5%	92.1%					
分析対象者数	421	0	0	356	523	0	0	0	0	0	0	399	498	2197				
有効回収率	58.1%	0.0%	0.0%	35.6%	53.3%	0.0%	0.0%	0.0%	0.0%	0.0%	0.0%	60.8%	89.1%					

表Ⅲ

	2007				2008				2009				2010				合計	
	(年度)	(月)				(月)				(月)				(月)				
		1-3	4-6	7-9	10-12	1-3	4-6	7-9	10-12	1-3	4-6	7-9	10-12	1-3	4-6	7-9	10-12	
MSM除く男性(n)	189	0	0	146	244	0	0	0	0	0	0	153	203	935				
(%)	44.9%	0.0%	0.0%	41.0%	46.7%	0.0%	0.0%	0.0%	0.0%	0.0%	0.0%	38.3%	40.8%	42.6%				
女性(n)	160	0	0	166	212	0	0	0	0	0	0	186	217	941				
(%)	38.0%	0.0%	0.0%	46.6%	40.5%	0.0%	0.0%	0.0%	0.0%	0.0%	0.0%	46.6%	43.6%	42.8%				
その他(n)	1	0	0	0	0	0	0	0	0	0	0	1	2	4				
(%)	0.2%	0.0%	0.0%	0.0%	0.0%	0.0%	0.0%	0.0%	0.0%	0.0%	0.0%	0.3%	0.4%	0.2%				
MSM(n)	71	0	0	44	67	0	0	0	0	0	0	59	76	317				
(%)	16.9%	0.0%	0.0%	12.4%	12.8%	0.0%	0.0%	0.0%	0.0%	0.0%	0.0%	14.8%	15.3%	14.4%				



○ 性別および性指向別の基本属性 (年齢割合・居住地割合)

大阪市北区保健福祉センター

MSM(Men who have sex with men)を除く男性														
(年度)	2007	2008				2009				2010				合計
(月)	1-3	4-6	7-9	10-12	1-3	4-6	7-9	10-12	1-3	4-6	7-9	10-12		
(計)	189	0	0	146	244	0	0	0	0	0	153	203	935	
年齢	24歳以下	10%	0%	0%	13%	15%	0%	0%	0%	0%	0%	12%	14%	13%
	25-34歳	39%	0%	0%	36%	34%	0%	0%	0%	0%	0%	39%	31%	35%
	35-44歳	26%	0%	0%	30%	31%	0%	0%	0%	0%	0%	28%	33%	30%
	45-54歳	13%	0%	0%	12%	9%	0%	0%	0%	0%	0%	8%	10%	10%
	55歳以上	12%	0%	0%	9%	10%	0%	0%	0%	0%	0%	11%	13%	11%
	無回答	1%	0%	0%	1%	1%	0%	0%	0%	0%	0%	1%	0%	1%
居住地	滋賀県	1%	0%	0%	0%	0%	0%	0%	0%	0%	0%	0%	0%	0%
	京都府	5%	0%	0%	3%	1%	0%	0%	0%	0%	0%	1%	1%	2%
	大阪府	85%	0%	0%	90%	89%	0%	0%	0%	0%	0%	90%	87%	88%
	兵庫県	8%	0%	0%	6%	8%	0%	0%	0%	0%	0%	7%	10%	8%
	奈良県	1%	0%	0%	0%	1%	0%	0%	0%	0%	0%	2%	1%	1%
	和歌山県	1%	0%	0%	1%	0%	0%	0%	0%	0%	0%	1%	0%	0%



女性														
(年度)	2007	2008				2009				2010				合計
(月)	1-3	4-6	7-9	10-12	1-3	4-6	7-9	10-12	1-3	4-6	7-9	10-12		
(計)	160	0	0	166	212	0	0	0	0	0	186	217	941	
年齢	24歳以下	29%	0%	0%	33%	25%	0%	0%	0%	0%	0%	19%	26%	26%
	25-34歳	48%	0%	0%	45%	53%	0%	0%	0%	0%	0%	54%	50%	50%
	35-44歳	18%	0%	0%	15%	17%	0%	0%	0%	0%	0%	20%	17%	17%
	45-54歳	4%	0%	0%	4%	4%	0%	0%	0%	0%	0%	4%	5%	4%
	55歳以上	1%	0%	0%	2%	2%	0%	0%	0%	0%	0%	3%	1%	2%
	無回答	0%	0%	0%	1%	0%	0%	0%	0%	0%	0%	0%	0%	0%
居住地	滋賀県	0%	0%	0%	1%	0%	0%	0%	0%	0%	0%	0%	0%	0%
	京都府	1%	0%	0%	1%	0%	0%	0%	0%	0%	0%	1%	0%	1%
	大阪府	94%	0%	0%	92%	94%	0%	0%	0%	0%	0%	95%	96%	94%
	兵庫県	4%	0%	0%	5%	4%	0%	0%	0%	0%	0%	4%	3%	4%
	奈良県	1%	0%	0%	1%	1%	0%	0%	0%	0%	0%	0%	0%	1%
	和歌山県	0%	0%	0%	1%	0%	0%	0%	0%	0%	0%	0%	0%	0%

Men who have sex with men														
(年度)	2007	2008				2009				2010				合計
(月)	1-3	4-6	7-9	10-12	1-3	4-6	7-9	10-12	1-3	4-6	7-9	10-12		
(計)	71	0	0	44	67	0	0	0	0	0	59	76	317	
年齢	24歳以下	20%	0%	0%	27%	21%	0%	0%	0%	0%	0%	15%	16%	19%
	25-34歳	45%	0%	0%	32%	36%	0%	0%	0%	0%	0%	39%	38%	38%
	35-44歳	23%	0%	0%	27%	25%	0%	0%	0%	0%	0%	29%	32%	27%
	45-54歳	8%	0%	0%	7%	7%	0%	0%	0%	0%	0%	10%	12%	9%
	55歳以上	4%	0%	0%	7%	10%	0%	0%	0%	0%	0%	7%	3%	6%
	無回答	0%	0%	0%	0%	0%	0%	0%	0%	0%	0%	0%	0%	0%
居住地	滋賀県	1%	0%	0%	0%	0%	0%	0%	0%	0%	0%	2%	0%	1%
	京都府	6%	0%	0%	0%	1%	0%	0%	0%	0%	0%	0%	0%	2%
	大阪府	83%	0%	0%	82%	90%	0%	0%	0%	0%	0%	81%	86%	85%
	兵庫県	10%	0%	0%	14%	7%	0%	0%	0%	0%	0%	14%	14%	12%
	奈良県	0%	0%	0%	5%	1%	0%	0%	0%	0%	0%	3%	0%	2%
	和歌山県	0%	0%	0%	0%	0%	0%	0%	0%	0%	0%	0%	0%	0%

京阪神(保健所)

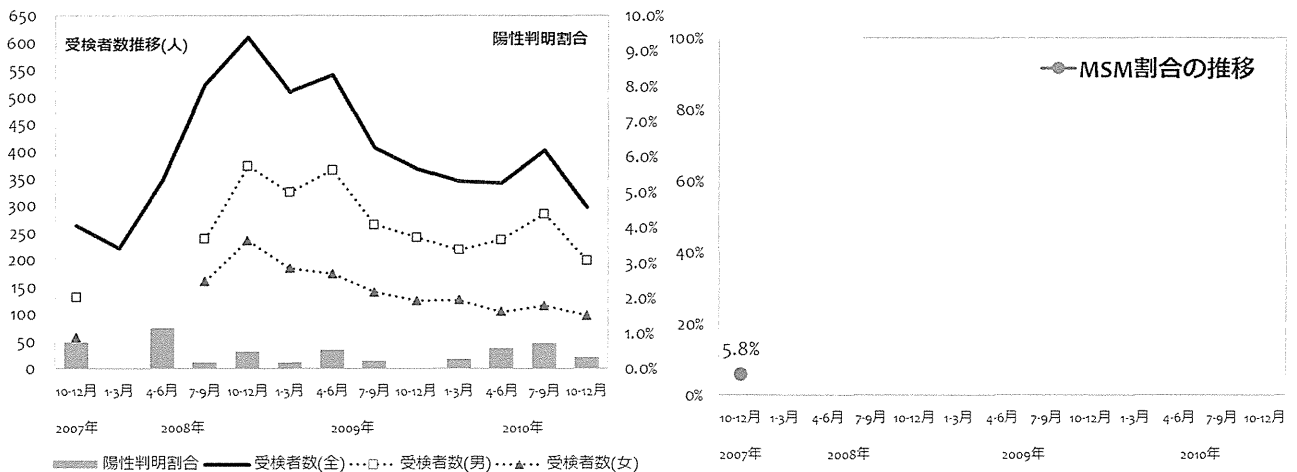
大阪府中央区保健福祉センター



	2007				2008				2009				2010				合計
	(月)	1-3	4-6	7-9	10-12	1-3	4-6	7-9	10-12	1-3	4-6	7-9	10-12	1-3	4-6	7-9	
男性受検者数	131	0	0	239	374	325	366	266	243	219	238	286	200	2887			
男性陽性者数	2	0	4	1	3	1	3	1	0	1	2	3	1	22			
女性受検者数	57	0	0	161	237	185	175	141	126	127	105	117	98	1529			
女性陽性者数	0	0	0	0	0	0	0	0	0	0	0	0	0	0			
その他受検者数	76	222	347	123	0	0	0	0	0	0	0	0	0	768			
その他陽性者数	0	0	0	0	0	0	0	0	0	0	0	0	0	0			
受検者計	264	222	347	523	611	510	541	407	369	346	343	403	298	5184			
陽性者計	2	0	4	1	3	1	3	1	0	1	2	3	1	22			
陽性判明割合(男)	1.53%	0.00%	0.00%	0.42%	0.80%	0.31%	0.82%	0.38%	0.00%	0.46%	0.84%	1.05%	0.50%	0.76%			
陽性判明割合(女)	0.00%	0.00%	0.00%	0.00%	0.00%	0.00%	0.00%	0.00%	0.00%	0.00%	0.00%	0.00%	0.00%	0.00%			
陽性判明割合(全)	0.76%	0.00%	1.15%	0.19%	0.49%	0.20%	0.55%	0.25%	0.00%	0.29%	0.58%	0.74%	0.34%	0.42%			

	2007				2008				2009				2010				合計	
	(月)	1-3	4-6	7-9	10-12	1-3	4-6	7-9	10-12	1-3	4-6	7-9	10-12	1-3	4-6	7-9		10-12
回収数	177	0	0	0	0	0	0	0	0	0	0	0	0	0	0	0	0	177
回収率	67.0%	0.0%	0.0%	0.0%	0.0%	0.0%	0.0%	0.0%	0.0%	0.0%	0.0%	0.0%	0.0%	0.0%	0.0%	0.0%	0.0%	0.0%
分析対象者数	171	0	0	0	0	0	0	0	0	0	0	0	0	0	0	0	0	171
有効回収率	64.8%	0.0%	0.0%	0.0%	0.0%	0.0%	0.0%	0.0%	0.0%	0.0%	0.0%	0.0%	0.0%	0.0%	0.0%	0.0%	0.0%	0.0%

	2007				2008				2009				2010				合計	
	(月)	1-3	4-6	7-9	10-12	1-3	4-6	7-9	10-12	1-3	4-6	7-9	10-12	1-3	4-6	7-9		10-12
MSM除く男性(n)	105	0	0	0	0	0	0	0	0	0	0	0	0	0	0	0	0	105
(%)	61.4%	0.0%	0.0%	0.0%	0.0%	0.0%	0.0%	0.0%	0.0%	0.0%	0.0%	0.0%	0.0%	0.0%	0.0%	0.0%	0.0%	61.4%
女性(n)	56	0	0	0	0	0	0	0	0	0	0	0	0	0	0	0	0	56
(%)	32.7%	0.0%	0.0%	0.0%	0.0%	0.0%	0.0%	0.0%	0.0%	0.0%	0.0%	0.0%	0.0%	0.0%	0.0%	0.0%	0.0%	32.7%
その他(n)	0	0	0	0	0	0	0	0	0	0	0	0	0	0	0	0	0	0
(%)	0.0%	0.0%	0.0%	0.0%	0.0%	0.0%	0.0%	0.0%	0.0%	0.0%	0.0%	0.0%	0.0%	0.0%	0.0%	0.0%	0.0%	0.0%
MSM(n)	10	0	0	0	0	0	0	0	0	0	0	0	0	0	0	0	0	10
(%)	5.8%	0.0%	0.0%	0.0%	0.0%	0.0%	0.0%	0.0%	0.0%	0.0%	0.0%	0.0%	0.0%	0.0%	0.0%	0.0%	0.0%	5.8%



○ 性別および性指向別の基本属性 (年齢割合・居住地割合)

大阪市中央区保健福祉センター

MSM(Men who have sex with men)を除く男性																		
(年度)		2007				2008				2009				2010				合計
(月)		1-3	4-6	7-9	10-12	1-3	4-6	7-9	10-12	1-3	4-6	7-9	10-12	1-3	4-6	7-9	10-12	
(計)		105	0	0	0	0	0	0	0	0	0	0	0	0	0	0	0	105
年齢	24歳以下	10%	0%	0%	0%	0%	0%	0%	0%	0%	0%	0%	0%	0%	0%	0%	0%	10%
	25-34歳	39%	0%	0%	0%	0%	0%	0%	0%	0%	0%	0%	0%	0%	0%	0%	0%	39%
	35-44歳	29%	0%	0%	0%	0%	0%	0%	0%	0%	0%	0%	0%	0%	0%	0%	0%	29%
	45-54歳	13%	0%	0%	0%	0%	0%	0%	0%	0%	0%	0%	0%	0%	0%	0%	0%	13%
	55歳以上	10%	0%	0%	0%	0%	0%	0%	0%	0%	0%	0%	0%	0%	0%	0%	0%	10%
	無回答	0%	0%	0%	0%	0%	0%	0%	0%	0%	0%	0%	0%	0%	0%	0%	0%	0%
居住地	滋賀県	0%	0%	0%	0%	0%	0%	0%	0%	0%	0%	0%	0%	0%	0%	0%	0%	0%
	京都府	3%	0%	0%	0%	0%	0%	0%	0%	0%	0%	0%	0%	0%	0%	0%	0%	3%
	大阪府	87%	0%	0%	0%	0%	0%	0%	0%	0%	0%	0%	0%	0%	0%	0%	0%	87%
	兵庫県	5%	0%	0%	0%	0%	0%	0%	0%	0%	0%	0%	0%	0%	0%	0%	0%	5%
	奈良県	6%	0%	0%	0%	0%	0%	0%	0%	0%	0%	0%	0%	0%	0%	0%	0%	6%
	和歌山県	0%	0%	0%	0%	0%	0%	0%	0%	0%	0%	0%	0%	0%	0%	0%	0%	0%



女性																		
(年度)		2007				2008				2009				2010				合計
(月)		1-3	4-6	7-9	10-12	1-3	4-6	7-9	10-12	1-3	4-6	7-9	10-12	1-3	4-6	7-9	10-12	
(計)		56	0	0	0	0	0	0	0	0	0	0	0	0	0	0	0	56
年齢	24歳以下	32%	0%	0%	0%	0%	0%	0%	0%	0%	0%	0%	0%	0%	0%	0%	0%	32%
	25-34歳	48%	0%	0%	0%	0%	0%	0%	0%	0%	0%	0%	0%	0%	0%	0%	0%	48%
	35-44歳	9%	0%	0%	0%	0%	0%	0%	0%	0%	0%	0%	0%	0%	0%	0%	0%	9%
	45-54歳	9%	0%	0%	0%	0%	0%	0%	0%	0%	0%	0%	0%	0%	0%	0%	0%	9%
	55歳以上	0%	0%	0%	0%	0%	0%	0%	0%	0%	0%	0%	0%	0%	0%	0%	0%	0%
	無回答	2%	0%	0%	0%	0%	0%	0%	0%	0%	0%	0%	0%	0%	0%	0%	0%	2%
居住地	滋賀県	0%	0%	0%	0%	0%	0%	0%	0%	0%	0%	0%	0%	0%	0%	0%	0%	0%
	京都府	2%	0%	0%	0%	0%	0%	0%	0%	0%	0%	0%	0%	0%	0%	0%	0%	2%
	大阪府	91%	0%	0%	0%	0%	0%	0%	0%	0%	0%	0%	0%	0%	0%	0%	0%	91%
	兵庫県	5%	0%	0%	0%	0%	0%	0%	0%	0%	0%	0%	0%	0%	0%	0%	0%	5%
	奈良県	2%	0%	0%	0%	0%	0%	0%	0%	0%	0%	0%	0%	0%	0%	0%	0%	2%
	和歌山県	0%	0%	0%	0%	0%	0%	0%	0%	0%	0%	0%	0%	0%	0%	0%	0%	0%

Men who have sex with men																		
(年度)		2007				2008				2009				2010				合計
(月)		1-3	4-6	7-9	10-12	1-3	4-6	7-9	10-12	1-3	4-6	7-9	10-12	1-3	4-6	7-9	10-12	
(計)		10	0	0	0	0	0	0	0	0	0	0	0	0	0	0	0	10
年齢	24歳以下	0%	0%	0%	0%	0%	0%	0%	0%	0%	0%	0%	0%	0%	0%	0%	0%	0%
	25-34歳	70%	0%	0%	0%	0%	0%	0%	0%	0%	0%	0%	0%	0%	0%	0%	0%	70%
	35-44歳	30%	0%	0%	0%	0%	0%	0%	0%	0%	0%	0%	0%	0%	0%	0%	0%	30%
	45-54歳	0%	0%	0%	0%	0%	0%	0%	0%	0%	0%	0%	0%	0%	0%	0%	0%	0%
	55歳以上	0%	0%	0%	0%	0%	0%	0%	0%	0%	0%	0%	0%	0%	0%	0%	0%	0%
	無回答	0%	0%	0%	0%	0%	0%	0%	0%	0%	0%	0%	0%	0%	0%	0%	0%	0%
居住地	滋賀県	0%	0%	0%	0%	0%	0%	0%	0%	0%	0%	0%	0%	0%	0%	0%	0%	0%
	京都府	0%	0%	0%	0%	0%	0%	0%	0%	0%	0%	0%	0%	0%	0%	0%	0%	0%
	大阪府	90%	0%	0%	0%	0%	0%	0%	0%	0%	0%	0%	0%	0%	0%	0%	0%	90%
	兵庫県	10%	0%	0%	0%	0%	0%	0%	0%	0%	0%	0%	0%	0%	0%	0%	0%	10%
	奈良県	0%	0%	0%	0%	0%	0%	0%	0%	0%	0%	0%	0%	0%	0%	0%	0%	0%
	和歌山県	0%	0%	0%	0%	0%	0%	0%	0%	0%	0%	0%	0%	0%	0%	0%	0%	0%

京阪神(保健所)

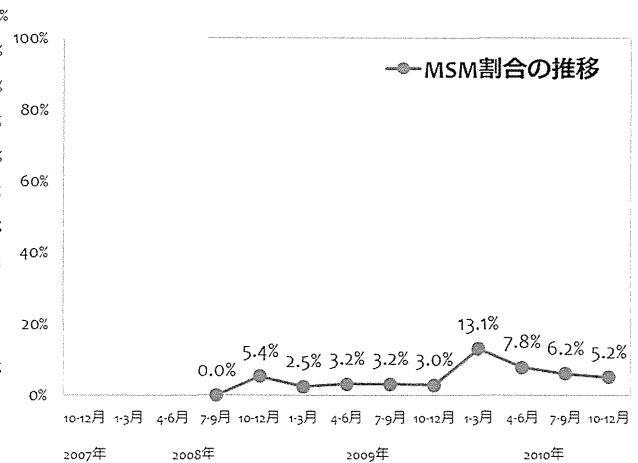
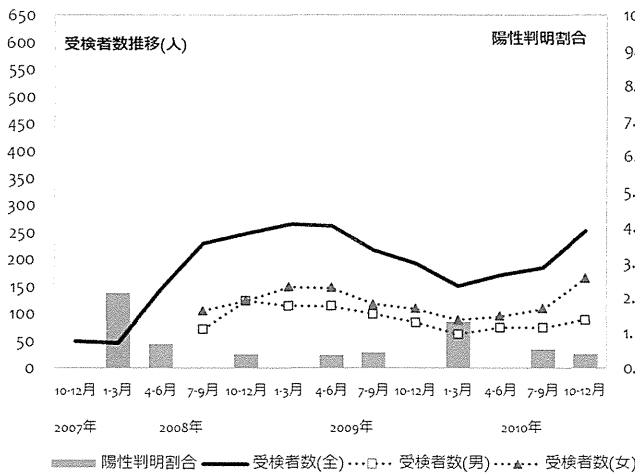
淀川区保健福祉センター



	2007				2008				2009				2010				合計
	(年度)	(月)			(年度)	(月)			(年度)	(月)			(年度)	(月)			
男性受検者数	0	0	0	72	124	115	114	100	84	63	75	75	89	911			
男性陽性者数	0	1	1	0	1	0	1	1	0	2	0	1	1	9			
女性受検者数	0	0	0	106	125	150	148	118	110	89	96	110	165	1217			
女性陽性者数	0	0	0	0	0	0	0	0	0	0	0	0	0	0			
その他受検者数	50	47	146	52	0	0	0	0	0	0	0	0	0	295			
その他陽性者数	0	0	0	0	0	0	0	0	0	0	0	0	0	0			
受検者計	50	47	146	230	249	265	262	218	194	152	171	185	254	2423			
陽性者計	0	1	1	0	1	0	1	1	0	2	0	1	1	9			
陽性判明割合(男)	0.00%	0.00%	0.00%	0.00%	0.81%	0.00%	0.88%	1.00%	0.00%	3.17%	0.00%	1.33%	1.12%	0.99%			
陽性判明割合(女)	0.00%	0.00%	0.00%	0.00%	0.00%	0.00%	0.00%	0.00%	0.00%	0.00%	0.00%	0.00%	0.00%	0.00%			
陽性判明割合(全)	0.00%	2.13%	0.68%	0.00%	0.40%	0.00%	0.38%	0.46%	0.00%	1.32%	0.00%	0.54%	0.39%	0.37%			

	2007				2008				2009				2010				合計
	(年度)	(月)			(年度)	(月)			(年度)	(月)			(年度)	(月)			
回収数	0	0	0	103	240	256	225	181	110	68	109	141	161	1594			
回収率	0.0%	0.0%	0.0%	44.8%	96.4%	96.6%	85.9%	83.0%	56.7%	44.7%	63.7%	76.2%	63.4%				
分析対象者数	0	0	0	98	223	237	190	158	100	61	102	130	153	1452			
有効回収率	0.0%	0.0%	0.0%	42.6%	89.6%	89.4%	72.5%	72.5%	51.5%	40.1%	59.6%	70.3%	60.2%				

	2007				2008				2009				2010				合計
	(年度)	(月)			(年度)	(月)			(年度)	(月)			(年度)	(月)			
MSM除く男性(n)	0	0	0	38	100	102	87	77	49	26	51	53	50	633			
(%)	0.0%	0.0%	0.0%	38.8%	44.8%	43.0%	45.8%	48.7%	49.0%	42.6%	50.0%	40.8%	32.7%	43.6%			
女性(n)	0	0	0	60	111	129	97	76	48	27	43	69	95	755			
(%)	0.0%	0.0%	0.0%	61.2%	49.8%	54.4%	51.1%	48.1%	48.0%	44.3%	42.2%	53.1%	62.1%	52.0%			
その他(n)	0	0	0	0	0	0	0	0	0	0	0	0	0	0			
(%)	0.0%	0.0%	0.0%	0.0%	0.0%	0.0%	0.0%	0.0%	0.0%	0.0%	0.0%	0.0%	0.0%	0.0%			
MSM(n)	0	0	0	12	6	6	5	3	8	8	8	8	8	64			
(%)	0.0%	0.0%	0.0%	5.4%	2.5%	3.2%	3.2%	3.0%	13.1%	7.8%	6.2%	5.2%	4.4%				



○ 性別および性指向別の基本属性（年齢割合・居住地割合）

淀川区保健福祉センター



MSM(Men who have sex with men)を除く男性																	
(年度)	2007				2008				2009				2010				合計
(月)	1-3	4-6	7-9	10-12	1-3	4-6	7-9	10-12	1-3	4-6	7-9	10-12	1-3	4-6	7-9	10-12	
(計)	0	0	0	38	100	102	87	77	49	26	51	53	50	633			
年齢	24歳以下	0%	0%	0%	5%	22%	22%	23%	12%	10%	15%	6%	11%	10%	15%		
	25-34歳	0%	0%	0%	61%	36%	32%	30%	40%	43%	50%	43%	42%	30%	38%		
	35-44歳	0%	0%	0%	29%	20%	24%	29%	27%	27%	19%	33%	34%	26%	26%		
	45-54歳	0%	0%	0%	5%	13%	13%	11%	17%	14%	15%	12%	2%	22%	13%		
	55歳以上	0%	0%	0%	0%	9%	10%	7%	4%	6%	0%	6%	11%	12%	7%		
	無回答	0%	0%	0%	0%	0%	0%	0%	0%	0%	0%	0%	0%	0%	0%		
居住地	滋賀県	0%	0%	0%	0%	1%	0%	0%	1%	0%	0%	0%	0%	0%	0%		
	京都府	0%	0%	0%	3%	1%	3%	1%	1%	0%	4%	0%	0%	2%	1%		
	大阪府	0%	0%	0%	84%	91%	86%	91%	84%	92%	73%	86%	79%	90%	87%		
	兵庫県	0%	0%	0%	13%	7%	11%	8%	13%	8%	23%	12%	21%	8%	11%		
	奈良県	0%	0%	0%	0%	0%	0%	0%	0%	0%	0%	2%	0%	0%	0%		
	和歌山県	0%	0%	0%	0%	0%	0%	0%	0%	0%	0%	0%	0%	0%	0%		

女性																	
(年度)	2007				2008				2009				2010				合計
(月)	1-3	4-6	7-9	10-12	1-3	4-6	7-9	10-12	1-3	4-6	7-9	10-12	1-3	4-6	7-9	10-12	
(計)	0	0	0	60	111	129	97	76	48	27	43	69	95	755			
年齢	24歳以下	0%	0%	0%	47%	34%	38%	29%	30%	23%	19%	23%	25%	28%	31%		
	25-34歳	0%	0%	0%	33%	34%	32%	35%	30%	38%	30%	35%	30%	21%	32%		
	35-44歳	0%	0%	0%	17%	24%	22%	20%	30%	19%	26%	33%	25%	32%	25%		
	45-54歳	0%	0%	0%	2%	5%	7%	11%	8%	15%	19%	7%	16%	15%	10%		
	55歳以上	0%	0%	0%	2%	0%	0%	5%	1%	6%	7%	0%	3%	4%	2%		
	無回答	0%	0%	0%	0%	3%	1%	0%	0%	0%	0%	2%	1%	0%	1%		
居住地	滋賀県	0%	0%	0%	0%	0%	0%	0%	0%	0%	0%	0%	1%	1%	0%		
	京都府	0%	0%	0%	2%	3%	2%	4%	4%	0%	4%	0%	3%	2%	3%		
	大阪府	0%	0%	0%	87%	77%	83%	76%	79%	85%	85%	88%	88%	89%	83%		
	兵庫県	0%	0%	0%	12%	21%	15%	19%	17%	13%	11%	12%	7%	7%	14%		
	奈良県	0%	0%	0%	0%	0%	0%	1%	0%	2%	0%	0%	0%	0%	0%		
	和歌山県	0%	0%	0%	0%	0%	0%	0%	0%	0%	0%	0%	0%	0%	0%		

Men who have sex with men																	
(年度)	2007				2008				2009				2010				合計
(月)	1-3	4-6	7-9	10-12	1-3	4-6	7-9	10-12	1-3	4-6	7-9	10-12	1-3	4-6	7-9	10-12	
(計)	0	0	0	12	6	6	5	3	8	8	8	8	64				
年齢	24歳以下	0%	0%	0%	25%	33%	50%	40%	33%	50%	25%	38%	13%	33%			
	25-34歳	0%	0%	0%	67%	17%	50%	40%	67%	25%	25%	38%	38%	41%			
	35-44歳	0%	0%	0%	8%	33%	0%	0%	0%	0%	25%	25%	25%	14%			
	45-54歳	0%	0%	0%	0%	17%	0%	0%	0%	25%	13%	0%	13%	8%			
	55歳以上	0%	0%	0%	0%	0%	0%	20%	0%	0%	13%	0%	13%	5%			
	無回答	0%	0%	0%	0%	0%	0%	0%	0%	0%	0%	0%	0%	0%			
居住地	滋賀県	0%	0%	0%	0%	0%	0%	0%	0%	0%	0%	0%	0%	0%			
	京都府	0%	0%	0%	0%	0%	0%	0%	0%	0%	0%	0%	0%	0%			
	大阪府	0%	0%	0%	92%	83%	83%	100%	100%	100%	88%	100%	75%	91%			
	兵庫県	0%	0%	0%	8%	17%	17%	0%	0%	0%	13%	0%	25%	9%			
	奈良県	0%	0%	0%	0%	0%	0%	0%	0%	0%	0%	0%	0%	0%			
	和歌山県	0%	0%	0%	0%	0%	0%	0%	0%	0%	0%	0%	0%	0%			

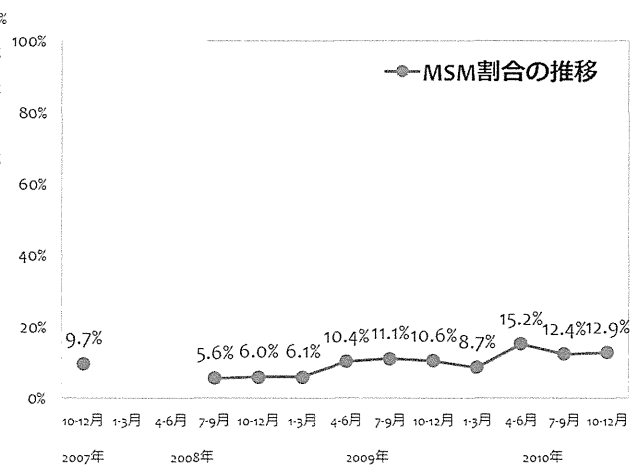
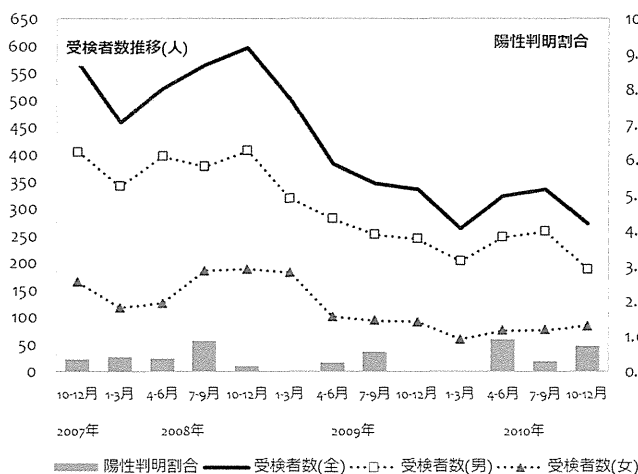




	2007				2008				2009				2010				合計
	(年度)	(月)			(月)			(月)			(月)						
		1-3	4-6	7-9	10-12	1-3	4-6	7-9	10-12	1-3	4-6	7-9	10-12				
男性受検者数	405	342	396	378	407	320	282	253	245	204	248	259	189	3928			
男性陽性者数	2	2	2	5	1	0	1	2	0	0	3	1	2	21			
女性受検者数	165	118	126	186	189	183	101	94	92	60	76	77	84	1551			
女性陽性者数	0	0	0	0	0	0	0	0	0	0	0	0	0	0			
その他受検者数	0	0	0	0	0	0	0	0	0	0	0	0	0	0			
その他陽性者数	0	0	0	0	0	0	0	0	0	0	0	0	0	0			
受検者計	570	460	522	564	596	503	383	347	337	264	324	336	273	5479			
陽性者計	2	2	2	5	1	0	1	2	0	0	3	1	2	21			
陽性判明割合(男)	0.49%	0.58%	0.51%	1.32%	0.25%	0.00%	0.35%	0.79%	0.00%	0.00%	1.21%	0.39%	1.06%	0.53%			
陽性判明割合(女)	0.00%	0.00%	0.00%	0.00%	0.00%	0.00%	0.00%	0.00%	0.00%	0.00%	0.00%	0.00%	0.00%	0.00%			
陽性判明割合(全)	0.35%	0.43%	0.38%	0.89%	0.17%	0.00%	0.26%	0.58%	0.00%	0.00%	0.93%	0.30%	0.73%	0.38%			

	2007				2008				2009				2010				合計
	(年度)	(月)			(月)			(月)			(月)						
		1-3	4-6	7-9	10-12	1-3	4-6	7-9	10-12	1-3	4-6	7-9	10-12				
回収数	366	0	0	243	566	478	365	314	318	242	311	304	243	3750			
回収率	64.2%	0.0%	0.0%	43.1%	95.0%	95.0%	95.3%	90.5%	94.4%	91.7%	96.0%	90.5%	89.0%				
分析対象者数	350	0	0	231	531	462	347	296	303	229	289	290	233	3561			
有効回収率	61.4%	0.0%	0.0%	41.0%	89.1%	91.8%	90.6%	85.3%	89.9%	86.7%	89.2%	86.3%	85.3%				

	2007				2008				2009				2010				合計
	(年度)	(月)			(月)			(月)			(月)						
		1-3	4-6	7-9	10-12	1-3	4-6	7-9	10-12	1-3	4-6	7-9	10-12				
MSM除く男性(n)	207	0	0	137	328	268	214	180	189	156	173	186	135	2173			
(%)	59.1%	0.0%	0.0%	59.3%	61.8%	58.0%	61.7%	60.8%	62.4%	68.1%	59.9%	64.1%	57.9%	61.0%			
女性(n)	109	0	0	81	171	165	97	83	82	53	72	68	68	1049			
(%)	31.1%	0.0%	0.0%	35.1%	32.2%	35.7%	28.0%	28.0%	27.1%	23.1%	24.9%	23.4%	29.2%	29.5%			
その他(n)	0	0	0	0	0	1	0	0	0	0	0	0	0	1			
(%)	0.0%	0.0%	0.0%	0.0%	0.0%	0.2%	0.0%	0.0%	0.0%	0.0%	0.0%	0.0%	0.0%	0.0%			
MSM(n)	34	0	0	13	32	28	36	33	32	20	44	36	30	338			
(%)	9.7%	0.0%	0.0%	5.6%	6.0%	6.1%	10.4%	11.1%	10.6%	8.7%	15.2%	12.4%	12.9%	9.5%			



○ 性別および性指向別の基本属性 (年齢割合・居住地割合)

財団法人大阪予防医学協会

MSM(Men who have sex with men)を除く男性																		
	(年度)	2007				2008				2009				2010				合計
		(月)				(月)				(月)				(月)				
		1-3	4-6	7-9	10-12	1-3	4-6	7-9	10-12	1-3	4-6	7-9	10-12	1-3	4-6	7-9	10-12	
	(計)	207	0	0	137	328	268	214	180	189	156	173	186	135	2173			
年齢	24歳以下	7%	0%	0%	9%	9%	9%	9%	7%	7%	6%	8%	5%	5%	8%			
	25-34歳	43%	0%	0%	42%	47%	43%	36%	42%	41%	42%	42%	42%	39%	42%			
	35-44歳	29%	0%	0%	33%	30%	31%	35%	35%	31%	28%	31%	36%	35%	32%			
	45-54歳	12%	0%	0%	9%	9%	12%	10%	8%	11%	15%	13%	12%	11%	11%			
	55歳以上	9%	0%	0%	5%	4%	4%	8%	7%	10%	9%	7%	5%	10%	7%			
	無回答	0%	0%	0%	1%	0%	1%	2%	1%	1%	0%	0%	0%	1%	1%			
居住地	滋賀県	0%	0%	0%	0%	0%	0%	0%	0%	0%	1%	0%	0%	0%	0%			
	京都府	1%	0%	0%	2%	2%	1%	3%	1%	1%	2%	2%	4%	1%	2%			
	大阪府	81%	0%	0%	88%	85%	86%	82%	86%	87%	84%	85%	82%	83%	84%			
	兵庫県	14%	0%	0%	8%	10%	9%	10%	12%	7%	12%	11%	10%	12%	10%			
	奈良県	3%	0%	0%	1%	3%	3%	4%	1%	4%	1%	1%	5%	3%	3%			
	和歌山県	1%	0%	0%	0%	0%	0%	0%	1%	1%	0%	1%	0%	1%	0%			



女性																		
	(年度)	2007				2008				2009				2010				合計
		(月)				(月)				(月)				(月)				
		1-3	4-6	7-9	10-12	1-3	4-6	7-9	10-12	1-3	4-6	7-9	10-12	1-3	4-6	7-9	10-12	
	(計)	109	0	0	81	171	165	97	83	82	53	72	68	68	1049			
年齢	24歳以下	28%	0%	0%	30%	29%	32%	25%	25%	33%	25%	26%	24%	22%	28%			
	25-34歳	58%	0%	0%	58%	57%	55%	58%	57%	60%	55%	63%	59%	57%	57%			
	35-44歳	14%	0%	0%	10%	11%	10%	14%	16%	7%	19%	8%	12%	16%	12%			
	45-54歳	0%	0%	0%	1%	3%	1%	1%	2%	0%	2%	1%	3%	3%	2%			
	55歳以上	0%	0%	0%	0%	0%	2%	0%	0%	0%	0%	1%	0%	0%	0%			
	無回答	1%	0%	0%	1%	1%	0%	2%	0%	0%	0%	0%	3%	1%	1%			
居住地	滋賀県	0%	0%	0%	0%	0%	0%	0%	0%	0%	0%	0%	0%	0%	0%			
	京都府	2%	0%	0%	1%	2%	3%	0%	4%	2%	0%	3%	0%	1%	2%			
	大阪府	87%	0%	0%	94%	85%	90%	85%	90%	80%	89%	94%	94%	91%	89%			
	兵庫県	6%	0%	0%	2%	9%	4%	11%	5%	11%	9%	1%	4%	7%	6%			
	奈良県	6%	0%	0%	1%	3%	2%	4%	0%	6%	2%	1%	1%	0%	3%			
	和歌山県	0%	0%	0%	1%	1%	1%	0%	1%	0%	0%	0%	0%	0%	0%			

Men who have sex with men																		
	(年度)	2007				2008				2009				2010				合計
		(月)				(月)				(月)				(月)				
		1-3	4-6	7-9	10-12	1-3	4-6	7-9	10-12	1-3	4-6	7-9	10-12	1-3	4-6	7-9	10-12	
	(計)	34	0	0	13	32	28	36	33	32	20	44	36	30	338			
年齢	24歳以下	21%	0%	0%	8%	6%	14%	11%	3%	6%	5%	11%	19%	13%	11%			
	25-34歳	53%	0%	0%	31%	38%	29%	44%	36%	50%	35%	25%	39%	23%	37%			
	35-44歳	21%	0%	0%	38%	44%	46%	36%	58%	41%	45%	52%	39%	57%	43%			
	45-54歳	6%	0%	0%	8%	9%	11%	8%	3%	3%	15%	9%	3%	7%	7%			
	55歳以上	0%	0%	0%	15%	3%	0%	0%	0%	0%	0%	2%	0%	0%	1%			
	無回答	0%	0%	0%	0%	0%	0%	0%	0%	0%	0%	0%	0%	0%	0%			
居住地	滋賀県	0%	0%	0%	0%	0%	0%	0%	0%	6%	5%	0%	0%	0%	1%			
	京都府	3%	0%	0%	15%	0%	0%	0%	0%	0%	0%	0%	0%	0%	1%			
	大阪府	97%	0%	0%	62%	84%	93%	94%	85%	84%	75%	89%	86%	90%	87%			
	兵庫県	0%	0%	0%	15%	13%	7%	6%	12%	9%	15%	9%	11%	10%	9%			
	奈良県	0%	0%	0%	8%	3%	0%	0%	3%	0%	5%	2%	3%	0%	2%			
	和歌山県	0%	0%	0%	0%	0%	0%	0%	0%	0%	0%	0%	0%	0%	0%			

京阪神(保健所)

chotCASTなんば (スマートらいふネット)



表 I

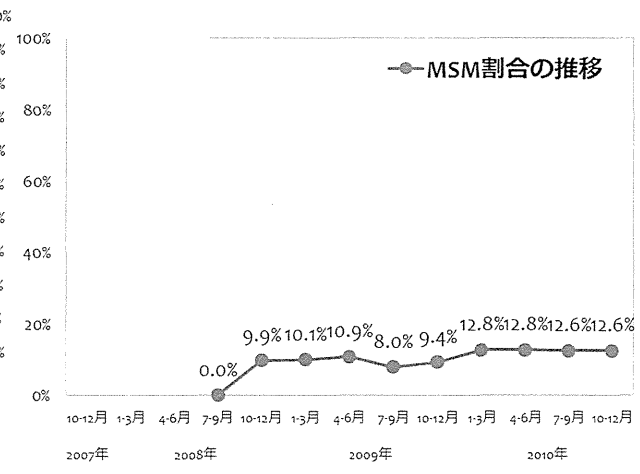
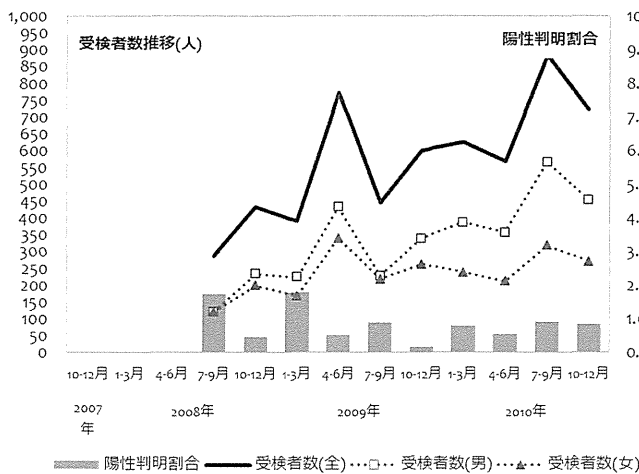
	2007				2008				2009				2010				合計
	(年度)	(月)			(月)			(月)			(月)						
		1-3	4-6	7-9	10-12	1-3	4-6	7-9	10-12	1-3	4-6	7-9	10-12				
男性受検者数	0	0	0	120	234	224	433	228	339	387	357	566	453	3341			
男性陽性者数	0	0	0	3	2	7	4	4	1	5	3	8	6	43			
女性受検者数	0	0	0	121	199	168	339	217	262	238	211	318	270	2343			
女性陽性者数	0	0	0	0	0	0	0	0	0	0	0	0	0	0			
その他受検者数	0	0	0	46	0	0	0	0	0	0	0	0	0	46			
その他陽性者数	0	0	0	2	0	0	0	0	0	0	0	0	0	2			
受検者計	0	0	0	287	433	392	772	445	601	625	568	884	723	5730			
陽性者計	0	0	0	5	2	7	4	4	1	5	3	8	6	45			
陽性判明割合(男)	0.00%	0.00%	0.00%	2.50%	0.85%	3.13%	0.92%	1.75%	0.29%	1.29%	0.84%	1.41%	1.32%	1.29%			
陽性判明割合(女)	0.00%	0.00%	0.00%	0.00%	0.00%	0.00%	0.00%	0.00%	0.00%	0.00%	0.00%	0.00%	0.00%	0.00%			
陽性判明割合(全)	0.00%	0.00%	0.00%	1.74%	0.46%	1.79%	0.52%	0.90%	0.17%	0.80%	0.53%	0.90%	0.83%	0.79%			

表 II

	2007				2008				2009				2010				合計
	(年度)	(月)			(月)			(月)			(月)						
		1-3	4-6	7-9	10-12	1-3	4-6	7-9	10-12	1-3	4-6	7-9	10-12				
回収数	0	0	0	0	285	396	769	436	589	619	558	881	717	5250			
回収率	0.0%	0.0%	0.0%	0.0%	65.8%	101.0%	99.6%	98.0%	98.0%	99.0%	98.2%	99.7%	99.2%				
分析対象者数	0	0	0	0	273	386	742	410	564	595	533	844	690	5037			
有効回収率	0.0%	0.0%	0.0%	0.0%	63.0%	98.5%	96.1%	92.1%	93.8%	95.2%	93.8%	95.5%	95.4%				

表 III

	2007				2008				2009				2010				合計
	(年度)	(月)			(月)			(月)			(月)						
		1-3	4-6	7-9	10-12	1-3	4-6	7-9	10-12	1-3	4-6	7-9	10-12				
MSM除く男性(n)	0	0	0	0	127	182	337	166	263	289	262	426	342	2394			
(%)	0.0%	0.0%	0.0%	0.0%	46.5%	47.2%	45.4%	40.5%	46.6%	48.6%	49.2%	50.5%	49.6%	47.5%			
女性(n)	0	0	0	0	119	165	323	210	248	229	203	310	261	2068			
(%)	0.0%	0.0%	0.0%	0.0%	43.6%	42.7%	43.5%	51.2%	44.0%	38.5%	38.1%	36.7%	37.8%	41.1%			
その他(n)	0	0	0	0	0	0	1	1	0	1	0	2	0	5			
(%)	0.0%	0.0%	0.0%	0.0%	0.0%	0.0%	0.1%	0.2%	0.0%	0.2%	0.0%	0.2%	0.0%	0.1%			
MSM(n)	0	0	0	0	27	39	81	33	53	76	68	106	87	570			
(%)	0.0%	0.0%	0.0%	0.0%	9.9%	10.1%	10.9%	8.0%	9.4%	12.8%	12.8%	12.6%	12.6%	11.3%			



○ 性別および性指向別の基本属性 (年齢割合・居住地割合)

chotCASTなんば (スマートらいふネット)



MSM(Men who have sex with men)を除く男性																		
	(年度)	2007				2008				2009				2010				合計
		(月)				(月)				(月)				(月)				
		1-3	4-6	7-9	10-12	1-3	4-6	7-9	10-12	1-3	4-6	7-9	10-12	1-3	4-6	7-9	10-12	
	(計)	0	0	0	127	182	337	166	263	289	262	426	342	2394				
年齢	24歳以下	0%	0%	0%	17%	18%	16%	19%	17%	14%	11%	14%	14%	15%				
	25-34歳	0%	0%	0%	46%	46%	42%	40%	40%	40%	45%	43%	45%	43%				
	35-44歳	0%	0%	0%	24%	23%	26%	29%	25%	30%	30%	30%	27%	27%				
	45-54歳	0%	0%	0%	7%	9%	12%	8%	10%	11%	10%	9%	9%	10%				
	55歳以上	0%	0%	0%	7%	4%	4%	4%	7%	5%	3%	3%	4%	4%				
	無回答	0%	0%	0%	0%	0%	0%	0%	0%	0%	0%	0%	0%	0%				
居住地	滋賀県	0%	0%	0%	0%	1%	0%	0%	1%	0%	0%	0%	0%	0%				
	京都府	0%	0%	0%	2%	2%	4%	3%	3%	2%	2%	2%	1%	2%				
	大阪府	0%	0%	0%	87%	85%	84%	80%	84%	83%	88%	84%	84%	84%				
	兵庫県	0%	0%	0%	9%	6%	7%	9%	8%	8%	7%	8%	8%	8%				
	奈良県	0%	0%	0%	2%	5%	5%	7%	3%	5%	3%	5%	6%	5%				
	和歌山県	0%	0%	0%	1%	1%	0%	1%	2%	1%	0%	1%	0%	1%				

女性																		
	(年度)	2007				2008				2009				2010				合計
		(月)				(月)				(月)				(月)				
		1-3	4-6	7-9	10-12	1-3	4-6	7-9	10-12	1-3	4-6	7-9	10-12	1-3	4-6	7-9	10-12	
	(計)	0	0	0	119	165	323	210	248	229	203	310	261	2068				
年齢	24歳以下	0%	0%	0%	35%	37%	39%	32%	40%	33%	33%	34%	32%	35%				
	25-34歳	0%	0%	0%	50%	49%	47%	46%	46%	50%	55%	53%	51%	50%				
	35-44歳	0%	0%	0%	11%	13%	11%	17%	13%	15%	10%	10%	14%	13%				
	45-54歳	0%	0%	0%	3%	1%	2%	4%	1%	2%	1%	2%	3%	2%				
	55歳以上	0%	0%	0%	1%	0%	1%	0%	0%	0%	0%	1%	0%	0%				
	無回答	0%	0%	0%	0%	0%	0%	0%	1%	0%	0%	1%	0%	0%				
居住地	滋賀県	0%	0%	0%	0%	0%	0%	0%	0%	0%	0%	1%	0%	0%				
	京都府	0%	0%	0%	0%	2%	1%	3%	2%	1%	1%	1%	2%	2%				
	大阪府	0%	0%	0%	89%	89%	91%	89%	87%	88%	88%	90%	89%	89%				
	兵庫県	0%	0%	0%	4%	5%	4%	3%	5%	6%	4%	4%	3%	4%				
	奈良県	0%	0%	0%	6%	4%	3%	3%	5%	4%	6%	3%	5%	4%				
	和歌山県	0%	0%	0%	1%	0%	1%	2%	1%	0%	0%	1%	0%	1%				

Men who have sex with men																		
	(年度)	2007				2008				2009				2010				合計
		(月)				(月)				(月)				(月)				
		1-3	4-6	7-9	10-12	1-3	4-6	7-9	10-12	1-3	4-6	7-9	10-12	1-3	4-6	7-9	10-12	
	(計)	0	0	0	27	39	81	33	53	76	68	106	87	570				
年齢	24歳以下	0%	0%	0%	22%	28%	19%	12%	26%	18%	21%	19%	33%	22%				
	25-34歳	0%	0%	0%	48%	44%	36%	39%	45%	32%	46%	41%	34%	39%				
	35-44歳	0%	0%	0%	19%	23%	28%	33%	17%	34%	18%	26%	18%	24%				
	45-54歳	0%	0%	0%	4%	5%	11%	15%	11%	11%	7%	8%	10%	9%				
	55歳以上	0%	0%	0%	7%	0%	5%	0%	0%	5%	9%	6%	3%	4%				
	無回答	0%	0%	0%	0%	0%	1%	0%	0%	0%	0%	0%	0%	0%				
居住地	滋賀県	0%	0%	0%	0%	0%	0%	0%	0%	0%	0%	2%	0%	0%				
	京都府	0%	0%	0%	0%	0%	6%	3%	6%	5%	6%	3%	3%	4%				
	大阪府	0%	0%	0%	74%	92%	81%	91%	83%	84%	75%	87%	84%	84%				
	兵庫県	0%	0%	0%	7%	5%	6%	3%	6%	7%	13%	8%	9%	8%				
	奈良県	0%	0%	0%	19%	3%	6%	3%	6%	3%	6%	0%	3%	4%				
	和歌山県	0%	0%	0%	0%	0%	0%	0%	0%	1%	0%	0%	0%	0%				

京阪神(保健所)

大阪府池田保健所



表 I

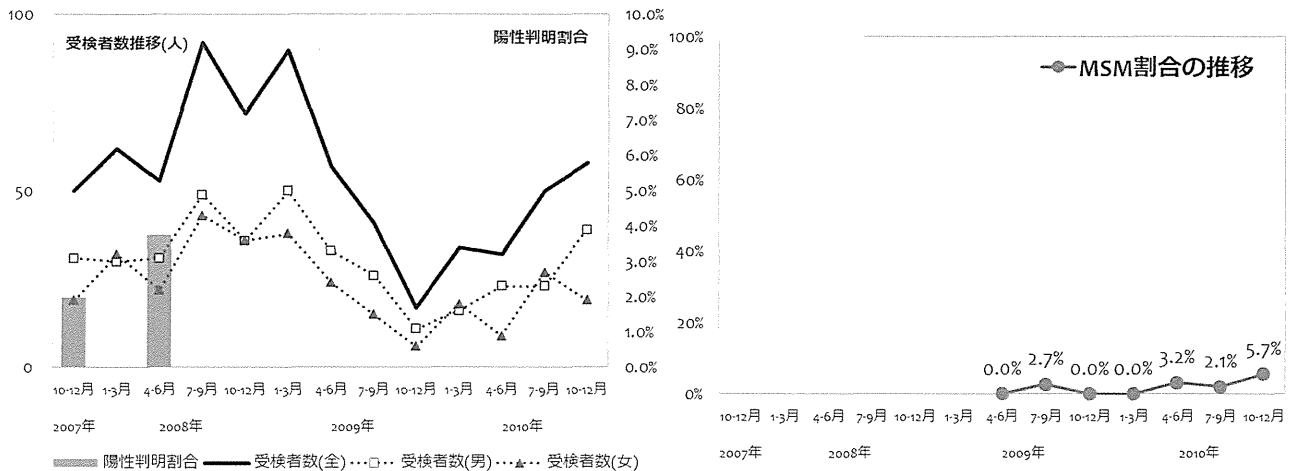
	2007				2008				2009				2010				合計
	(月)	1-3	4-6	7-9	10-12	1-3	4-6	7-9	10-12	1-3	4-6	7-9	10-12				
男性受検者数	31	30	31	49	36	50	33	26	11	16	23	23	39	398			
男性陽性者数	1	0	1	0	0	0	0	0	0	0	0	0	0	2			
女性受検者数	19	32	22	43	36	38	24	15	6	18	9	27	19	308			
女性陽性者数	0	0	1	0	0	0	0	0	0	0	0	0	0	1			
その他受検者数	0	0	0	0	0	2	0	0	0	0	0	0	0	2			
その他陽性者数	0	0	0	0	0	0	0	0	0	0	0	0	0	0			
受検者計	50	62	53	92	72	90	57	41	17	34	32	50	58	708			
陽性者計	1	0	2	0	0	0	0	0	0	0	0	0	0	3			
陽性判明割合(男)	3.23%	0.00%	3.23%	0.00%	0.00%	0.00%	0.00%	0.00%	0.00%	0.00%	0.00%	0.00%	0.00%	0.50%			
陽性判明割合(女)	0.00%	0.00%	4.55%	0.00%	0.00%	0.00%	0.00%	0.00%	0.00%	0.00%	0.00%	0.00%	0.00%	0.32%			
陽性判明割合(全)	2.00%	0.00%	3.77%	0.00%	0.00%	0.00%	0.00%	0.00%	0.00%	0.00%	0.00%	0.00%	0.00%	0.42%			

表 II

	2007				2008				2009				2010				合計
	(月)	1-3	4-6	7-9	10-12	1-3	4-6	7-9	10-12	1-3	4-6	7-9	10-12				
回収数	0	0	0	0	0	0	56	38	16	35	32	50	53	280			
回収率	0.0%	0.0%	0.0%	0.0%	0.0%	0.0%	98.2%	92.7%	94.1%	102.9%	100.0%	100.0%	91.4%				
分析対象者数	0	0	0	0	0	0	54	37	16	33	31	48	53	272			
有効回収率	0.0%	0.0%	0.0%	0.0%	0.0%	0.0%	94.7%	90.2%	94.1%	97.1%	96.9%	96.0%	91.4%				

表 III

	2007				2008				2009				2010				合計
	(月)	1-3	4-6	7-9	10-12	1-3	4-6	7-9	10-12	1-3	4-6	7-9	10-12				
MSM除く男性(n)	0	0	0	0	0	0	33	22	10	17	21	22	32	157			
(%)	0.0%	0.0%	0.0%	0.0%	0.0%	0.0%	61.1%	59.5%	62.5%	51.5%	67.7%	45.8%	60.4%	57.7%			
女性(n)	0	0	0	0	0	0	21	14	6	16	9	25	18	109			
(%)	0.0%	0.0%	0.0%	0.0%	0.0%	0.0%	38.9%	37.8%	37.5%	48.5%	29.0%	52.1%	34.0%	40.1%			
その他(n)	0	0	0	0	0	0	0	0	0	0	0	0	0	0			
(%)	0.0%	0.0%	0.0%	0.0%	0.0%	0.0%	0.0%	0.0%	0.0%	0.0%	0.0%	0.0%	0.0%	0.0%			
MSM(n)	0	0	0	0	0	0	0	1	0	0	1	1	3	6			
(%)	0.0%	0.0%	0.0%	0.0%	0.0%	0.0%	0.0%	2.7%	0.0%	0.0%	3.2%	2.1%	5.7%	2.2%			



○ 性別および性指向別の基本属性（年齢割合・居住地割合）

大阪府池田保健所



MSM(Men who have sex with men)を除く男性																		
	(年度)	2007				2008				2009				2010				合計
		(月)				(月)				(月)				(月)				
		1-3	4-6	7-9	10-12	1-3	4-6	7-9	10-12	1-3	4-6	7-9	10-12	1-3	4-6	7-9	10-12	
	(計)	0	0	0	0	0	0	0	0	33	22	10	17	17	21	22	32	157
年齢	24歳以下	0%	0%	0%	0%	0%	0%	0%	0%	39%	14%	0%	35%	19%	32%	13%	24%	24%
	25-34歳	0%	0%	0%	0%	0%	0%	0%	0%	36%	41%	60%	29%	57%	18%	28%	36%	36%
	35-44歳	0%	0%	0%	0%	0%	0%	0%	0%	9%	32%	30%	0%	5%	32%	25%	18%	18%
	45-54歳	0%	0%	0%	0%	0%	0%	0%	0%	6%	0%	0%	29%	0%	9%	6%	7%	7%
	55歳以上	0%	0%	0%	0%	0%	0%	0%	0%	6%	14%	10%	0%	19%	9%	28%	13%	13%
	無回答	0%	0%	0%	0%	0%	0%	0%	0%	3%	0%	0%	6%	0%	0%	0%	1%	1%
居住地	滋賀県	0%	0%	0%	0%	0%	0%	0%	0%	0%	0%	0%	0%	0%	0%	0%	0%	0%
	京都府	0%	0%	0%	0%	0%	0%	0%	0%	0%	0%	0%	0%	0%	0%	0%	0%	0%
	大阪府	0%	0%	0%	0%	0%	0%	0%	0%	82%	82%	60%	88%	76%	77%	84%	80%	80%
	兵庫県	0%	0%	0%	0%	0%	0%	0%	0%	18%	18%	40%	12%	24%	23%	16%	20%	20%
	奈良県	0%	0%	0%	0%	0%	0%	0%	0%	0%	0%	0%	0%	0%	0%	0%	0%	0%
	和歌山県	0%	0%	0%	0%	0%	0%	0%	0%	0%	0%	0%	0%	0%	0%	0%	0%	0%

女性																		
	(年度)	2007				2008				2009				2010				合計
		(月)				(月)				(月)				(月)				
		1-3	4-6	7-9	10-12	1-3	4-6	7-9	10-12	1-3	4-6	7-9	10-12	1-3	4-6	7-9	10-12	
	(計)	0	0	0	0	0	0	0	0	21	14	6	16	9	25	18	109	109
年齢	24歳以下	0%	0%	0%	0%	0%	0%	0%	0%	48%	36%	17%	44%	44%	48%	67%	47%	47%
	25-34歳	0%	0%	0%	0%	0%	0%	0%	0%	38%	50%	33%	19%	44%	32%	28%	34%	34%
	35-44歳	0%	0%	0%	0%	0%	0%	0%	0%	14%	7%	33%	25%	0%	8%	6%	12%	12%
	45-54歳	0%	0%	0%	0%	0%	0%	0%	0%	0%	7%	0%	13%	11%	4%	0%	5%	5%
	55歳以上	0%	0%	0%	0%	0%	0%	0%	0%	0%	0%	17%	0%	0%	4%	0%	2%	2%
	無回答	0%	0%	0%	0%	0%	0%	0%	0%	0%	0%	0%	0%	0%	4%	0%	1%	1%
居住地	滋賀県	0%	0%	0%	0%	0%	0%	0%	0%	0%	0%	0%	0%	0%	0%	0%	0%	0%
	京都府	0%	0%	0%	0%	0%	0%	0%	0%	0%	0%	0%	0%	0%	0%	11%	2%	2%
	大阪府	0%	0%	0%	0%	0%	0%	0%	0%	86%	79%	50%	100%	89%	88%	89%	86%	86%
	兵庫県	0%	0%	0%	0%	0%	0%	0%	0%	14%	21%	50%	0%	11%	12%	0%	12%	12%
	奈良県	0%	0%	0%	0%	0%	0%	0%	0%	0%	0%	0%	0%	0%	0%	0%	0%	0%
	和歌山県	0%	0%	0%	0%	0%	0%	0%	0%	0%	0%	0%	0%	0%	0%	0%	0%	0%

Men who have sex with men																		
	(年度)	2007				2008				2009				2010				合計
		(月)				(月)				(月)				(月)				
		1-3	4-6	7-9	10-12	1-3	4-6	7-9	10-12	1-3	4-6	7-9	10-12	1-3	4-6	7-9	10-12	
	(計)	0	0	0	0	0	0	0	0	0	1	0	0	0	1	1	3	6
年齢	24歳以下	0%	0%	0%	0%	0%	0%	0%	0%	0%	100%	0%	0%	100%	100%	67%	83%	83%
	25-34歳	0%	0%	0%	0%	0%	0%	0%	0%	0%	0%	0%	0%	0%	0%	0%	0%	0%
	35-44歳	0%	0%	0%	0%	0%	0%	0%	0%	0%	0%	0%	0%	0%	0%	33%	17%	17%
	45-54歳	0%	0%	0%	0%	0%	0%	0%	0%	0%	0%	0%	0%	0%	0%	0%	0%	0%
	55歳以上	0%	0%	0%	0%	0%	0%	0%	0%	0%	0%	0%	0%	0%	0%	0%	0%	0%
	無回答	0%	0%	0%	0%	0%	0%	0%	0%	0%	0%	0%	0%	0%	0%	0%	0%	0%
居住地	滋賀県	0%	0%	0%	0%	0%	0%	0%	0%	0%	0%	0%	0%	0%	0%	0%	0%	0%
	京都府	0%	0%	0%	0%	0%	0%	0%	0%	0%	0%	0%	0%	0%	0%	0%	0%	0%
	大阪府	0%	0%	0%	0%	0%	0%	0%	0%	0%	0%	0%	0%	100%	100%	33%	50%	50%
	兵庫県	0%	0%	0%	0%	0%	0%	0%	0%	0%	100%	0%	0%	0%	0%	67%	50%	50%
	奈良県	0%	0%	0%	0%	0%	0%	0%	0%	0%	0%	0%	0%	0%	0%	0%	0%	0%
	和歌山県	0%	0%	0%	0%	0%	0%	0%	0%	0%	0%	0%	0%	0%	0%	0%	0%	0%

京阪神(保健所)

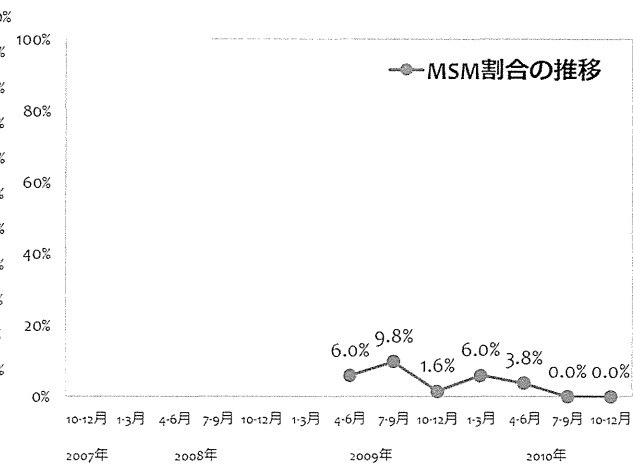
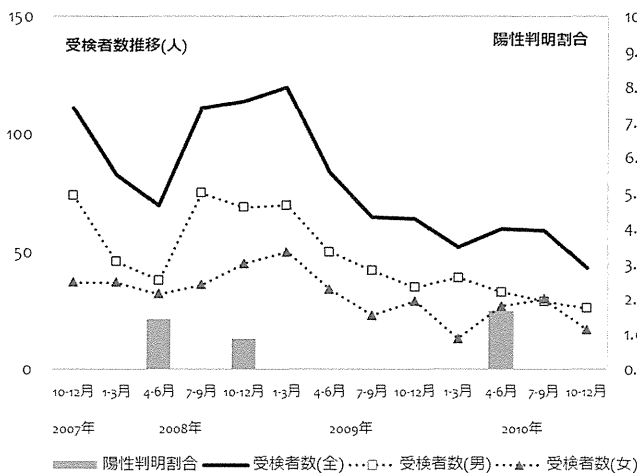
大阪府豊中保健所



	(年度)	2007				2008				2009				2010				合計
	(月)	1-3	4-6	7-9	10-12	1-3	4-6	7-9	10-12	1-3	4-6	7-9	10-12	1-3	4-6	7-9	10-12	
男性受検者数		74	46	38	75	69	70	50	42	35	39	33	29	26	626			
男性陽性者数		0	0	1	0	1	0	0	0	0	0	1	0	0	3			
女性受検者数		37	37	32	36	45	50	34	23	29	13	27	30	17	410			
女性陽性者数		0	0	0	0	0	0	0	0	0	0	0	0	0	0			
その他受検者数		0	0	0	0	0	0	0	0	0	0	0	0	0	0			
その他陽性者数		0	0	0	0	0	0	0	0	0	0	0	0	0	0			
受検者計		111	83	70	111	114	120	84	65	64	52	60	59	43	1036			
陽性者計		0	0	1	0	1	0	0	0	0	0	1	0	0	3			
陽性判明割合(男)		0.00%	0.00%	2.63%	0.00%	1.45%	0.00%	0.00%	0.00%	0.00%	0.00%	3.03%	0.00%	0.00%	0.48%			
陽性判明割合(女)		0.00%	0.00%	0.00%	0.00%	0.00%	0.00%	0.00%	0.00%	0.00%	0.00%	0.00%	0.00%	0.00%	0.00%			
陽性判明割合(全)		0.00%	0.00%	1.43%	0.00%	0.88%	0.00%	0.00%	0.00%	0.00%	0.00%	1.67%	0.00%	0.00%	0.29%			

	(年度)	2007				2008				2009				2010				合計
	(月)	1-3	4-6	7-9	10-12	1-3	4-6	7-9	10-12	1-3	4-6	7-9	10-12	1-3	4-6	7-9	10-12	
回収数		0	0	0	0	0	88	65	64	53	55	52	38	415				
回収率		0.0%	0.0%	0.0%	0.0%	0.0%	104.8%	100.0%	100.0%	101.9%	91.7%	88.1%	88.4%					
分析対象者数		0	0	0	0	0	84	61	62	50	52	50	37	396				
有効回収率		0.0%	0.0%	0.0%	0.0%	0.0%	100.0%	93.8%	96.9%	96.2%	86.7%	84.7%	86.0%					

	(年度)	2007				2008				2009				2010				合計
	(月)	1-3	4-6	7-9	10-12	1-3	4-6	7-9	10-12	1-3	4-6	7-9	10-12	1-3	4-6	7-9	10-12	
MSM除く男性(n)		0	0	0	0	0	49	31	33	35	25	23	25	221				
(%)		0.0%	0.0%	0.0%	0.0%	0.0%	58.3%	50.8%	53.2%	70.0%	48.1%	46.0%	67.6%	55.8%				
女性(n)		0	0	0	0	0	30	24	28	12	25	27	12	158				
(%)		0.0%	0.0%	0.0%	0.0%	0.0%	35.7%	39.3%	45.2%	24.0%	48.1%	54.0%	32.4%	39.9%				
その他(n)		0	0	0	0	0	0	0	0	0	0	0	0	0				
(%)		0.0%	0.0%	0.0%	0.0%	0.0%	0.0%	0.0%	0.0%	0.0%	0.0%	0.0%	0.0%	0.0%				
MSM(n)		0	0	0	0	0	5	6	1	3	2	0	0	17				
(%)		0.0%	0.0%	0.0%	0.0%	0.0%	6.0%	9.8%	1.6%	6.0%	3.8%	0.0%	0.0%	4.3%				



○ 性別および性指向別の基本属性 (年齢割合・居住地割合)

大阪府豊中保健所

MSM(Men who have sex with men)を除く男性																											
(年度)		2007				2008				2009				2010				合計									
(月)		1-3		4-6		7-9		10-12		1-3		4-6		7-9		10-12											
(計)		0		0		0		0		0		49		31		33			35		25		23		25		221
年齢	24歳以下	0%	0%	0%	0%	0%	0%	0%	0%	27%	29%	27%	31%	8%	35%	12%	25%										
	25-34歳	0%	0%	0%	0%	0%	0%	0%	0%	37%	48%	36%	31%	36%	35%	36%	37%										
	35-44歳	0%	0%	0%	0%	0%	0%	0%	0%	14%	13%	18%	17%	32%	22%	32%	20%										
	45-54歳	0%	0%	0%	0%	0%	0%	0%	0%	12%	0%	6%	9%	16%	0%	16%	9%										
	55歳以上	0%	0%	0%	0%	0%	0%	0%	0%	6%	10%	12%	11%	8%	4%	4%	8%										
	無回答	0%	0%	0%	0%	0%	0%	0%	0%	4%	0%	0%	0%	0%	4%	0%	1%										
居住地	滋賀県	0%	0%	0%	0%	0%	0%	0%	0%	0%	0%	0%	0%	0%	0%	0%	0%										
	京都府	0%	0%	0%	0%	0%	0%	0%	0%	0%	0%	0%	0%	0%	0%	0%	0%										
	大阪府	0%	0%	0%	0%	0%	0%	0%	0%	92%	94%	94%	91%	88%	96%	100%	93%										
	兵庫県	0%	0%	0%	0%	0%	0%	0%	0%	8%	6%	6%	6%	12%	4%	0%	6%										
	奈良県	0%	0%	0%	0%	0%	0%	0%	0%	0%	0%	0%	3%	0%	0%	0%	0%										
	和歌山県	0%	0%	0%	0%	0%	0%	0%	0%	0%	0%	0%	0%	0%	0%	0%	0%										



女性																											
(年度)		2007				2008				2009				2010				合計									
(月)		1-3		4-6		7-9		10-12		1-3		4-6		7-9		10-12											
(計)		0		0		0		0		0		30		24		28			12		25		27		12		158
年齢	24歳以下	0%	0%	0%	0%	0%	0%	0%	0%	37%	33%	39%	42%	32%	59%	42%	41%										
	25-34歳	0%	0%	0%	0%	0%	0%	0%	0%	47%	50%	32%	33%	52%	22%	42%	40%										
	35-44歳	0%	0%	0%	0%	0%	0%	0%	0%	10%	13%	14%	8%	12%	11%	17%	12%										
	45-54歳	0%	0%	0%	0%	0%	0%	0%	0%	7%	4%	7%	0%	4%	7%	0%	5%										
	55歳以上	0%	0%	0%	0%	0%	0%	0%	0%	0%	0%	7%	8%	0%	0%	0%	2%										
	無回答	0%	0%	0%	0%	0%	0%	0%	0%	0%	0%	0%	8%	0%	0%	0%	1%										
居住地	滋賀県	0%	0%	0%	0%	0%	0%	0%	0%	0%	0%	0%	0%	0%	0%	0%	0%										
	京都府	0%	0%	0%	0%	0%	0%	0%	0%	0%	0%	0%	0%	0%	0%	0%	0%										
	大阪府	0%	0%	0%	0%	0%	0%	0%	0%	100%	96%	93%	100%	92%	100%	100%	97%										
	兵庫県	0%	0%	0%	0%	0%	0%	0%	0%	0%	4%	7%	0%	8%	0%	0%	3%										
	奈良県	0%	0%	0%	0%	0%	0%	0%	0%	0%	0%	0%	0%	0%	0%	0%	0%										
	和歌山県	0%	0%	0%	0%	0%	0%	0%	0%	0%	0%	0%	0%	0%	0%	0%	0%										

Men who have sex with men																											
(年度)		2007				2008				2009				2010				合計									
(月)		1-3		4-6		7-9		10-12		1-3		4-6		7-9		10-12											
(計)		0		0		0		0		0		5		6		1			3		2		0		0		17
年齢	24歳以下	0%	0%	0%	0%	0%	0%	0%	0%	40%	50%	0%	67%	50%	0%	0%	47%										
	25-34歳	0%	0%	0%	0%	0%	0%	0%	0%	20%	33%	100%	33%	50%	0%	0%	35%										
	35-44歳	0%	0%	0%	0%	0%	0%	0%	0%	40%	17%	0%	0%	0%	0%	0%	18%										
	45-54歳	0%	0%	0%	0%	0%	0%	0%	0%	0%	0%	0%	0%	0%	0%	0%	0%										
	55歳以上	0%	0%	0%	0%	0%	0%	0%	0%	0%	0%	0%	0%	0%	0%	0%	0%										
	無回答	0%	0%	0%	0%	0%	0%	0%	0%	0%	0%	0%	0%	0%	0%	0%	0%										
居住地	滋賀県	0%	0%	0%	0%	0%	0%	0%	0%	0%	0%	0%	0%	0%	0%	0%	0%										
	京都府	0%	0%	0%	0%	0%	0%	0%	0%	0%	0%	0%	0%	0%	0%	0%	0%										
	大阪府	0%	0%	0%	0%	0%	0%	0%	0%	100%	100%	100%	100%	100%	0%	0%	100%										
	兵庫県	0%	0%	0%	0%	0%	0%	0%	0%	0%	0%	0%	0%	0%	0%	0%	0%										
	奈良県	0%	0%	0%	0%	0%	0%	0%	0%	0%	0%	0%	0%	0%	0%	0%	0%										
	和歌山県	0%	0%	0%	0%	0%	0%	0%	0%	0%	0%	0%	0%	0%	0%	0%	0%										



京阪神(保健所)

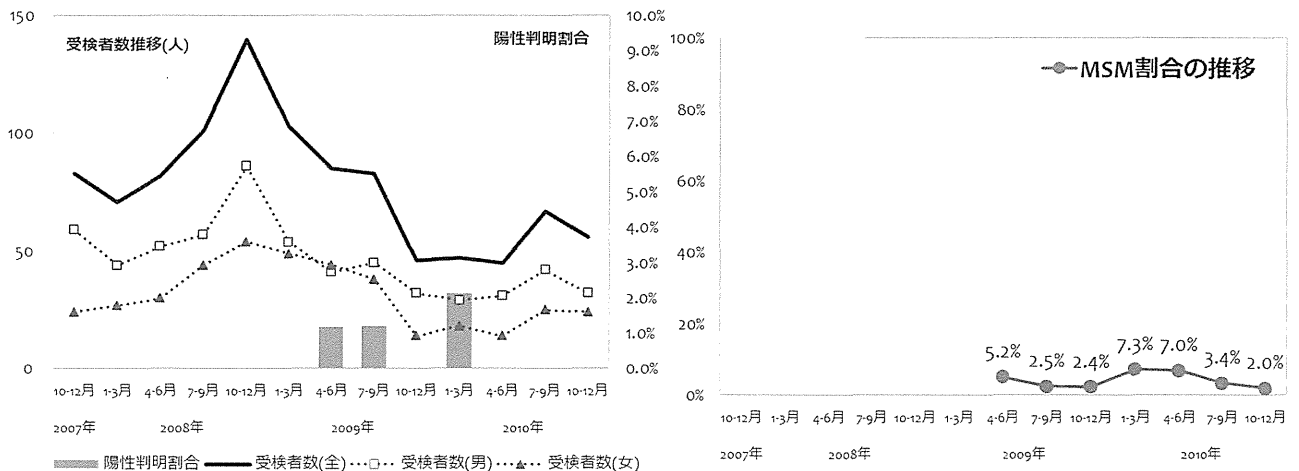
大阪府吹田保健所



	(年度)	2007				2008				2009				2010				合計
	(月)	1-3	4-6	7-9	10-12	1-3	4-6	7-9	10-12	1-3	4-6	7-9	10-12	1-3	4-6	7-9	10-12	
男性受検者数		59	44	52	57	86	54	41	45	32	29	31	42	32	604			
男性陽性者数		0	0	0	0	0	0	1	1	0	1	0	0	0	3			
女性受検者数		24	27	30	44	54	49	44	38	14	18	14	25	24	405			
女性陽性者数		0	0	0	0	0	0	0	0	0	0	0	0	0	0			
その他受検者数		0	0	0	0	0	0	0	0	0	0	0	0	0	0			
その他陽性者数		0	0	0	0	0	0	0	0	0	0	0	0	0	0			
受検者計		83	71	82	101	140	103	85	83	46	47	45	67	56	1009			
陽性者計		0	0	0	0	0	0	1	1	0	1	0	0	0	3			
陽性判明割合(男)		0.00%	0.00%	0.00%	0.00%	0.00%	0.00%	2.44%	2.22%	0.00%	3.45%	0.00%	0.00%	0.00%	0.50%			
陽性判明割合(女)		0.00%	0.00%	0.00%	0.00%	0.00%	0.00%	0.00%	0.00%	0.00%	0.00%	0.00%	0.00%	0.00%	0.00%			
陽性判明割合(全)		0.00%	0.00%	0.00%	0.00%	0.00%	0.00%	1.18%	1.20%	0.00%	2.13%	0.00%	0.00%	0.00%	0.30%			

	(年度)	2007				2008				2009				2010				合計
	(月)	1-3	4-6	7-9	10-12	1-3	4-6	7-9	10-12	1-3	4-6	7-9	10-12	1-3	4-6	7-9	10-12	
回収数		0	0	0	0	0	81	83	44	45	45	64	54	416				
回収率		0.0%	0.0%	0.0%	0.0%	0.0%	95.3%	100.0%	95.7%	95.7%	100.0%	95.5%	96.4%					
分析対象者数		0	0	0	0	0	77	81	41	41	43	58	49	390				
有効回収率		0.0%	0.0%	0.0%	0.0%	0.0%	90.6%	97.6%	89.1%	87.2%	95.6%	86.6%	87.5%					

	(年度)	2007				2008				2009				2010				合計
	(月)	1-3	4-6	7-9	10-12	1-3	4-6	7-9	10-12	1-3	4-6	7-9	10-12	1-3	4-6	7-9	10-12	
MSM除く男性(n)		0	0	0	0	0	30	42	26	23	28	36	25	210				
(%)		0.0%	0.0%	0.0%	0.0%	0.0%	39.0%	51.9%	63.4%	56.1%	65.1%	62.1%	51.0%	53.8%				
女性(n)		0	0	0	0	0	43	37	14	15	12	20	23	164				
(%)		0.0%	0.0%	0.0%	0.0%	0.0%	55.8%	45.7%	34.1%	36.6%	27.9%	34.5%	46.9%	42.1%				
その他(n)		0	0	0	0	0	0	0	0	0	0	0	0	0				
(%)		0.0%	0.0%	0.0%	0.0%	0.0%	0.0%	0.0%	0.0%	0.0%	0.0%	0.0%	0.0%	0.0%				
MSM(n)		0	0	0	0	0	4	2	1	3	3	2	1	16				
(%)		0.0%	0.0%	0.0%	0.0%	0.0%	5.2%	2.5%	2.4%	7.3%	7.0%	3.4%	2.0%	4.1%				



○ 性別および性指向別の基本属性 (年齢割合・居住地割合)

大阪府吹田保健所

MSM(Men who have sex with men)を除く男性																											
(年度)		2007				2008				2009				2010				合計									
(月)		1-3		4-6		7-9		10-12		1-3		4-6		7-9		10-12											
(計)		0		0		0		0		0		30		42		26		23		28		36		25		210	
年齢	24歳以下	0%	0%	0%	0%	0%	0%	0%	0%	43%	24%	27%	17%	43%	25%	28%	30%										
	25-34歳	0%	0%	0%	0%	0%	0%	0%	0%	27%	21%	42%	39%	36%	39%	28%	32%										
	35-44歳	0%	0%	0%	0%	0%	0%	0%	0%	17%	21%	12%	22%	7%	14%	24%	17%										
	45-54歳	0%	0%	0%	0%	0%	0%	0%	0%	0%	12%	15%	13%	7%	11%	4%	9%										
	55歳以上	0%	0%	0%	0%	0%	0%	0%	0%	13%	21%	4%	9%	7%	11%	16%	12%										
	無回答	0%	0%	0%	0%	0%	0%	0%	0%	0%	0%	0%	0%	0%	0%	0%	0%										
居住地	滋賀県	0%	0%	0%	0%	0%	0%	0%	0%	0%	0%	0%	0%	0%	0%	0%	0%										
	京都府	0%	0%	0%	0%	0%	0%	0%	0%	0%	0%	0%	0%	0%	3%	0%	0%										
	大阪府	0%	0%	0%	0%	0%	0%	0%	0%	90%	100%	92%	96%	93%	97%	100%	96%										
	兵庫県	0%	0%	0%	0%	0%	0%	0%	0%	7%	0%	4%	4%	4%	0%	0%	2%										
	奈良県	0%	0%	0%	0%	0%	0%	0%	0%	3%	0%	4%	0%	4%	0%	0%	1%										
	和歌山県	0%	0%	0%	0%	0%	0%	0%	0%	0%	0%	0%	0%	0%	0%	0%	0%										



女性																											
(年度)		2007				2008				2009				2010				合計									
(月)		1-3		4-6		7-9		10-12		1-3		4-6		7-9		10-12											
(計)		0		0		0		0		0		43		37		14		15		12		20		23		164	
年齢	24歳以下	0%	0%	0%	0%	0%	0%	0%	0%	47%	38%	43%	27%	42%	15%	39%	37%										
	25-34歳	0%	0%	0%	0%	0%	0%	0%	0%	40%	24%	36%	33%	17%	60%	39%	36%										
	35-44歳	0%	0%	0%	0%	0%	0%	0%	0%	12%	16%	14%	27%	25%	15%	22%	17%										
	45-54歳	0%	0%	0%	0%	0%	0%	0%	0%	0%	11%	0%	13%	8%	5%	0%	5%										
	55歳以上	0%	0%	0%	0%	0%	0%	0%	0%	0%	5%	7%	0%	8%	0%	0%	2%										
	無回答	0%	0%	0%	0%	0%	0%	0%	0%	2%	5%	0%	0%	0%	5%	0%	2%										
居住地	滋賀県	0%	0%	0%	0%	0%	0%	0%	0%	0%	0%	0%	0%	0%	0%	0%	0%										
	京都府	0%	0%	0%	0%	0%	0%	0%	0%	0%	0%	0%	0%	0%	0%	0%	0%										
	大阪府	0%	0%	0%	0%	0%	0%	0%	0%	98%	97%	93%	100%	92%	95%	100%	97%										
	兵庫県	0%	0%	0%	0%	0%	0%	0%	0%	2%	3%	7%	0%	8%	5%	0%	3%										
	奈良県	0%	0%	0%	0%	0%	0%	0%	0%	0%	0%	0%	0%	0%	0%	0%	0%										
	和歌山県	0%	0%	0%	0%	0%	0%	0%	0%	0%	0%	0%	0%	0%	0%	0%	0%										

Men who have sex with men																											
(年度)		2007				2008				2009				2010				合計									
(月)		1-3		4-6		7-9		10-12		1-3		4-6		7-9		10-12											
(計)		0		0		0		0		0		4		2		1		3		3		2		1		16	
年齢	24歳以下	0%	0%	0%	0%	0%	0%	0%	0%	50%	50%	100%	33%	33%	50%	0%	44%										
	25-34歳	0%	0%	0%	0%	0%	0%	0%	0%	50%	0%	0%	33%	33%	0%	100%	31%										
	35-44歳	0%	0%	0%	0%	0%	0%	0%	0%	0%	50%	0%	33%	33%	0%	0%	19%										
	45-54歳	0%	0%	0%	0%	0%	0%	0%	0%	0%	0%	0%	0%	0%	0%	0%	0%										
	55歳以上	0%	0%	0%	0%	0%	0%	0%	0%	0%	0%	0%	0%	0%	50%	0%	6%										
	無回答	0%	0%	0%	0%	0%	0%	0%	0%	0%	0%	0%	0%	0%	0%	0%	0%										
居住地	滋賀県	0%	0%	0%	0%	0%	0%	0%	0%	0%	0%	0%	0%	0%	0%	0%	0%										
	京都府	0%	0%	0%	0%	0%	0%	0%	0%	0%	0%	0%	0%	0%	0%	0%	0%										
	大阪府	0%	0%	0%	0%	0%	0%	0%	0%	100%	100%	100%	100%	100%	100%	100%	100%										
	兵庫県	0%	0%	0%	0%	0%	0%	0%	0%	0%	0%	0%	0%	0%	0%	0%	0%										
	奈良県	0%	0%	0%	0%	0%	0%	0%	0%	0%	0%	0%	0%	0%	0%	0%	0%										
	和歌山県	0%	0%	0%	0%	0%	0%	0%	0%	0%	0%	0%	0%	0%	0%	0%	0%										

京阪神(保健所)

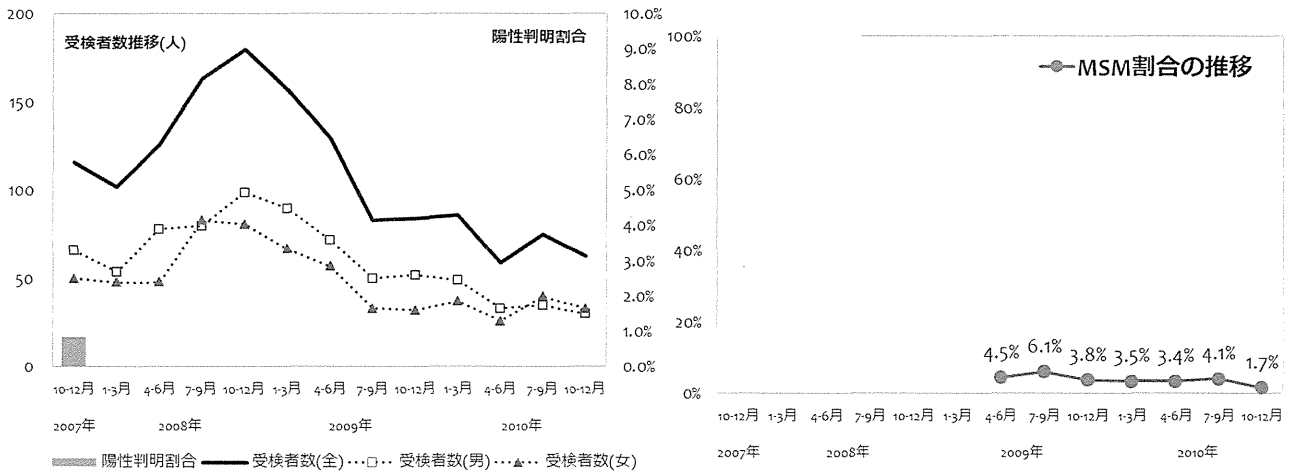
大阪府茨木保健所



	(年度) 2007	2008				2009				2010				合計
	(月)	1-3	4-6	7-9	10-12	1-3	4-6	7-9	10-12	1-3	4-6	7-9	10-12	
男性受検者数	66	54	78	80	99	90	72	50	52	49	33	35	30	788
男性陽性者数	1	0	0	0	0	0	0	0	0	0	0	0	0	1
女性受検者数	50	48	48	83	81	67	57	33	32	37	26	40	33	635
女性陽性者数	0	0	0	0	0	0	0	0	0	0	0	0	0	0
その他受検者数	0	0	0	0	0	0	0	0	0	0	0	0	0	0
その他陽性者数	0	0	0	0	0	0	0	0	0	0	0	0	0	0
受検者計	116	102	126	163	180	157	129	83	84	86	59	75	63	1423
陽性者計	1	0	0	0	0	0	0	0	0	0	0	0	0	1
陽性判明割合(男)	1.52%	0.00%	0.00%	0.00%	0.00%	0.00%	0.00%	0.00%	0.00%	0.00%	0.00%	0.00%	0.00%	0.13%
陽性判明割合(女)	0.00%	0.00%	0.00%	0.00%	0.00%	0.00%	0.00%	0.00%	0.00%	0.00%	0.00%	0.00%	0.00%	0.00%
陽性判明割合(全)	0.86%	0.00%	0.00%	0.00%	0.00%	0.00%	0.00%	0.00%	0.00%	0.00%	0.00%	0.00%	0.00%	0.07%

	(年度) 2007	2008				2009				2010				合計
	(月)	1-3	4-6	7-9	10-12	1-3	4-6	7-9	10-12	1-3	4-6	7-9	10-12	
回収数	0	0	0	0	0	0	122	85	84	89	62	77	63	582
回収率	0.0%	0.0%	0.0%	0.0%	0.0%	0.0%	94.6%	102.4%	100.0%	103.5%	105.1%	102.7%	100.0%	
分析対象者数	0	0	0	0	0	0	111	82	80	86	59	73	58	549
有効回収率	0.0%	0.0%	0.0%	0.0%	0.0%	0.0%	86.0%	98.8%	95.2%	100.0%	100.0%	97.3%	92.1%	

	(年度) 2007	2008				2009				2010				合計
	(月)	1-3	4-6	7-9	10-12	1-3	4-6	7-9	10-12	1-3	4-6	7-9	10-12	
MSM除く男性(n)	0	0	0	0	0	0	55	44	44	46	31	31	27	278
(%)	0.0%	0.0%	0.0%	0.0%	0.0%	0.0%	49.5%	53.7%	55.0%	53.5%	52.5%	42.5%	46.6%	50.6%
女性(n)	0	0	0	0	0	0	51	33	33	37	26	39	30	249
(%)	0.0%	0.0%	0.0%	0.0%	0.0%	0.0%	45.9%	40.2%	41.3%	43.0%	44.1%	53.4%	51.7%	45.4%
その他(n)	0	0	0	0	0	0	0	0	0	0	0	0	0	0
(%)	0.0%	0.0%	0.0%	0.0%	0.0%	0.0%	0.0%	0.0%	0.0%	0.0%	0.0%	0.0%	0.0%	0.0%
MSM(n)	0	0	0	0	0	0	5	5	3	3	2	3	1	22
(%)	0.0%	0.0%	0.0%	0.0%	0.0%	0.0%	4.5%	6.1%	3.8%	3.5%	3.4%	4.1%	1.7%	4.0%



○ 性別および性指向別の基本属性（年齢割合・居住地割合）

大阪府茨木保健所



MSM(Men who have sex with men)を除く男性																		
(年度)		2007				2008				2009				2010				合計
(月)		1-3		4-6		7-9		10-12		1-3		4-6		7-9		10-12		
(計)		0	0	0	0	0	0	55	44	44	46	31	31	27	278			
年齢	24歳以下	0%	0%	0%	0%	0%	0%	20%	14%	32%	15%	29%	13%	33%	22%			
	25-34歳	0%	0%	0%	0%	0%	0%	31%	39%	45%	52%	29%	26%	26%	37%			
	35-44歳	0%	0%	0%	0%	0%	0%	25%	25%	14%	20%	23%	42%	26%	24%			
	45-54歳	0%	0%	0%	0%	0%	0%	11%	7%	2%	7%	0%	6%	4%	6%			
	55歳以上	0%	0%	0%	0%	0%	0%	13%	16%	7%	7%	19%	13%	11%	12%			
	無回答	0%	0%	0%	0%	0%	0%	0%	0%	0%	0%	0%	0%	0%	0%			
居住地	滋賀県	0%	0%	0%	0%	0%	0%	0%	0%	2%	0%	3%	0%	0%	1%			
	京都府	0%	0%	0%	0%	0%	0%	0%	0%	5%	2%	0%	0%	0%	1%			
	大阪府	0%	0%	0%	0%	0%	0%	98%	98%	91%	98%	84%	100%	96%	95%			
	兵庫県	0%	0%	0%	0%	0%	0%	2%	2%	0%	0%	13%	0%	4%	3%			
	奈良県	0%	0%	0%	0%	0%	0%	0%	0%	2%	0%	0%	0%	0%	0%			
	和歌山県	0%	0%	0%	0%	0%	0%	0%	0%	0%	0%	0%	0%	0%	0%			

女性																		
(年度)		2007				2008				2009				2010				合計
(月)		1-3		4-6		7-9		10-12		1-3		4-6		7-9		10-12		
(計)		0	0	0	0	0	0	51	33	33	37	26	39	30	249			
年齢	24歳以下	0%	0%	0%	0%	0%	0%	37%	45%	36%	43%	50%	67%	33%	45%			
	25-34歳	0%	0%	0%	0%	0%	0%	39%	18%	52%	27%	38%	28%	37%	34%			
	35-44歳	0%	0%	0%	0%	0%	0%	20%	27%	12%	16%	12%	3%	23%	16%			
	45-54歳	0%	0%	0%	0%	0%	0%	2%	9%	0%	5%	0%	3%	3%	3%			
	55歳以上	0%	0%	0%	0%	0%	0%	2%	0%	0%	5%	0%	0%	3%	2%			
	無回答	0%	0%	0%	0%	0%	0%	0%	0%	0%	3%	0%	0%	0%	0%			
居住地	滋賀県	0%	0%	0%	0%	0%	0%	0%	0%	0%	0%	0%	0%	0%	0%			
	京都府	0%	0%	0%	0%	0%	0%	0%	0%	3%	3%	0%	0%	0%	1%			
	大阪府	0%	0%	0%	0%	0%	0%	96%	100%	97%	97%	100%	95%	97%	97%			
	兵庫県	0%	0%	0%	0%	0%	0%	4%	0%	0%	0%	0%	5%	3%	2%			
	奈良県	0%	0%	0%	0%	0%	0%	0%	0%	0%	0%	0%	0%	0%	0%			
	和歌山県	0%	0%	0%	0%	0%	0%	0%	0%	0%	0%	0%	0%	0%	0%			

Men who have sex with men																		
(年度)		2007				2008				2009				2010				合計
(月)		1-3		4-6		7-9		10-12		1-3		4-6		7-9		10-12		
(計)		0	0	0	0	0	0	5	5	3	3	2	3	1	22			
年齢	24歳以下	0%	0%	0%	0%	0%	0%	0%	40%	67%	0%	0%	0%	33%	0%	23%		
	25-34歳	0%	0%	0%	0%	0%	0%	80%	20%	33%	100%	50%	67%	100%	59%			
	35-44歳	0%	0%	0%	0%	0%	0%	0%	20%	0%	0%	50%	0%	0%	9%			
	45-54歳	0%	0%	0%	0%	0%	0%	20%	20%	0%	0%	0%	0%	0%	9%			
	55歳以上	0%	0%	0%	0%	0%	0%	0%	0%	0%	0%	0%	0%	0%	0%			
	無回答	0%	0%	0%	0%	0%	0%	0%	0%	0%	0%	0%	0%	0%	0%			
居住地	滋賀県	0%	0%	0%	0%	0%	0%	0%	0%	0%	0%	0%	0%	0%	0%			
	京都府	0%	0%	0%	0%	0%	0%	0%	0%	0%	0%	0%	0%	0%	0%			
	大阪府	0%	0%	0%	0%	0%	0%	100%	100%	100%	100%	100%	100%	100%	100%			
	兵庫県	0%	0%	0%	0%	0%	0%	0%	0%	0%	0%	0%	0%	0%	0%			
	奈良県	0%	0%	0%	0%	0%	0%	0%	0%	0%	0%	0%	0%	0%	0%			
	和歌山県	0%	0%	0%	0%	0%	0%	0%	0%	0%	0%	0%	0%	0%	0%			