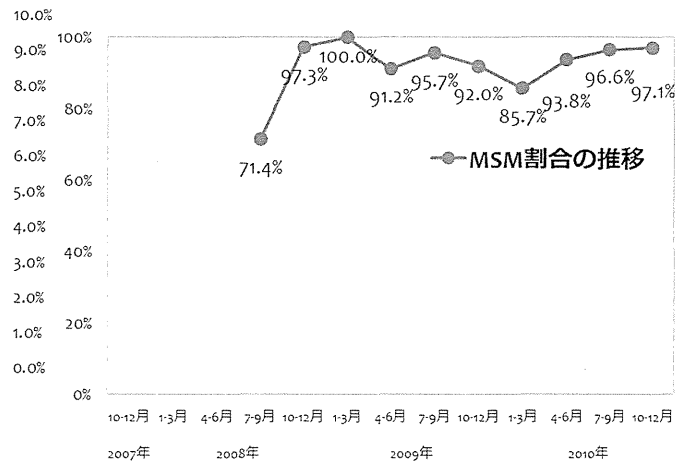
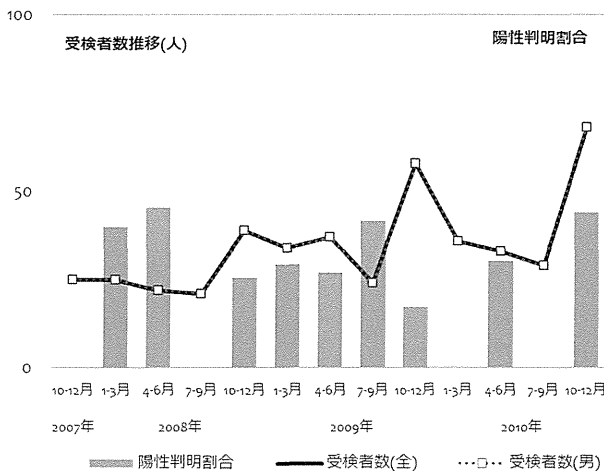




	2007				2008				2009				2010				合計
	(年度)	(月)			(年度)	(月)			(年度)	(月)			(年度)	(月)			
男性受検者数	25	25	22	21	39	34	37	24	58	36	33	29	68	451			
男性陽性者数	0	1	1	0	1	1	1	1	1	0	1	0	3	11			
女性受検者数	0	0	0	0	0	0	0	0	0	0	0	0	0	0			
女性陽性者数	0	0	0	0	0	0	0	0	0	0	0	0	0	0			
その他受検者数	0	0	0	0	0	0	0	0	0	0	0	0	0	0			
その他陽性者数	0	0	0	0	0	0	0	0	0	0	0	0	0	0			
受検者計	25	25	22	21	39	34	37	24	58	36	33	29	68	451			
陽性者計	0	1	1	0	1	1	1	1	1	0	1	0	3	11			
陽性判明割合(男)	0.00%	4.00%	4.55%	0.00%	2.56%	2.94%	2.70%	4.17%	1.72%	0.00%	3.03%	0.00%	4.41%	2.44%			
陽性判明割合(女)	0.00%	0.00%	0.00%	0.00%	0.00%	0.00%	0.00%	0.00%	0.00%	0.00%	0.00%	0.00%	0.00%	0.00%			
陽性判明割合(全)	0.00%	4.00%	4.55%	0.00%	2.56%	2.94%	2.70%	4.17%	1.72%	0.00%	3.03%	0.00%	4.41%	2.44%			

	2007				2008				2009				2010				合計
	(年度)	(月)			(年度)	(月)			(年度)	(月)			(年度)	(月)			
回収数	0	0	0	7	38	34	37	23	56	36	33	29	68	361			
回収率	0.0%	0.0%	0.0%	33.3%	97.4%	100.0%	100.0%	95.8%	96.6%	100.0%	100.0%	100.0%	100.0%	100.0%			
分析対象者数	0	0	0	7	37	32	34	23	50	35	32	29	68	347			
有効回収率	0.0%	0.0%	0.0%	33.3%	94.9%	94.1%	91.9%	95.8%	86.2%	97.2%	97.0%	100.0%	100.0%	100.0%			

	2007				2008				2009				2010				合計
	(年度)	(月)			(年度)	(月)			(年度)	(月)			(年度)	(月)			
MSM除く男性(n)	0	0	0	2	1	0	3	1	4	5	2	1	2	21			
(%)	0.0%	0.0%	0.0%	28.6%	2.7%	0.0%	8.8%	4.3%	8.0%	14.3%	6.3%	3.4%	2.9%	6.1%			
女性(n)	0	0	0	0	0	0	0	0	0	0	0	0	0	0			
(%)	0.0%	0.0%	0.0%	0.0%	0.0%	0.0%	0.0%	0.0%	0.0%	0.0%	0.0%	0.0%	0.0%	0.0%			
その他(n)	0	0	0	0	0	0	0	0	0	0	0	0	0	0			
(%)	0.0%	0.0%	0.0%	0.0%	0.0%	0.0%	0.0%	0.0%	0.0%	0.0%	0.0%	0.0%	0.0%	0.0%			
MSM(n)	0	0	0	5	36	32	31	22	46	30	30	28	66	326			
(%)	0.0%	0.0%	0.0%	71.4%	97.3%	100.0%	91.2%	95.7%	92.0%	85.7%	93.8%	96.6%	97.1%	93.9%			



○ 性別および性指向別の基本属性 (年齢割合・居住地割合)

かながわレインボーセンターSHIP



MSM(Men who have sex with men)を除く男性																	
(年度)	2007				2008				2009				2010				合計
(月)	1-3				4-6				7-9				10-12				
(計)	0	0	0	2	1	0	3	1	4	5	2	1	2	21			
年齢	24歳以下	0%	0%	0%	0%	0%	0%	0%	0%	0%	0%	20%	0%	100%	0%	10%	
	25-34歳	0%	0%	0%	100%	100%	0%	33%	100%	75%	60%	50%	0%	50%	62%		
	35-44歳	0%	0%	0%	0%	0%	0%	33%	0%	0%	20%	0%	0%	50%	14%		
	45-54歳	0%	0%	0%	0%	0%	0%	0%	0%	25%	0%	0%	0%	0%	5%		
	55歳以上	0%	0%	0%	0%	0%	0%	33%	0%	0%	0%	50%	0%	0%	10%		
	無回答	0%	0%	0%	0%	0%	0%	0%	0%	0%	0%	0%	0%	0%	0%		
居住地	茨城県	0%	0%	0%	0%	0%	0%	0%	0%	0%	0%	0%	0%	0%	0%		
	栃木県	0%	0%	0%	0%	0%	0%	0%	0%	0%	0%	0%	0%	0%	0%		
	群馬県	0%	0%	0%	0%	0%	0%	0%	0%	0%	0%	0%	0%	0%	0%		
	埼玉県	0%	0%	0%	0%	0%	0%	0%	0%	0%	0%	0%	0%	0%	0%		
	千葉県	0%	0%	0%	0%	0%	0%	0%	100%	0%	0%	0%	0%	0%	5%		
	東京都	0%	0%	0%	0%	0%	0%	0%	0%	0%	60%	0%	100%	0%	19%		
	神奈川県	0%	0%	0%	100%	100%	0%	100%	0%	100%	40%	100%	0%	100%	76%		

女性																	
(年度)	2007				2008				2009				2010				合計
(月)	1-3				4-6				7-9				10-12				
(計)	0	0	0	0	0	0	0	0	0	0	0	0	0	0	0	0	
年齢	24歳以下	0%	0%	0%	0%	0%	0%	0%	0%	0%	0%	0%	0%	0%	0%	0%	0%
	25-34歳	0%	0%	0%	0%	0%	0%	0%	0%	0%	0%	0%	0%	0%	0%	0%	0%
	35-44歳	0%	0%	0%	0%	0%	0%	0%	0%	0%	0%	0%	0%	0%	0%	0%	0%
	45-54歳	0%	0%	0%	0%	0%	0%	0%	0%	0%	0%	0%	0%	0%	0%	0%	0%
	55歳以上	0%	0%	0%	0%	0%	0%	0%	0%	0%	0%	0%	0%	0%	0%	0%	0%
	無回答	0%	0%	0%	0%	0%	0%	0%	0%	0%	0%	0%	0%	0%	0%	0%	0%
居住地	茨城県	0%	0%	0%	0%	0%	0%	0%	0%	0%	0%	0%	0%	0%	0%	0%	0%
	栃木県	0%	0%	0%	0%	0%	0%	0%	0%	0%	0%	0%	0%	0%	0%	0%	0%
	群馬県	0%	0%	0%	0%	0%	0%	0%	0%	0%	0%	0%	0%	0%	0%	0%	0%
	埼玉県	0%	0%	0%	0%	0%	0%	0%	0%	0%	0%	0%	0%	0%	0%	0%	0%
	千葉県	0%	0%	0%	0%	0%	0%	0%	0%	0%	0%	0%	0%	0%	0%	0%	0%
	東京都	0%	0%	0%	0%	0%	0%	0%	0%	0%	0%	0%	0%	0%	0%	0%	0%
	神奈川県	0%	0%	0%	0%	0%	0%	0%	0%	0%	0%	0%	0%	0%	0%	0%	0%

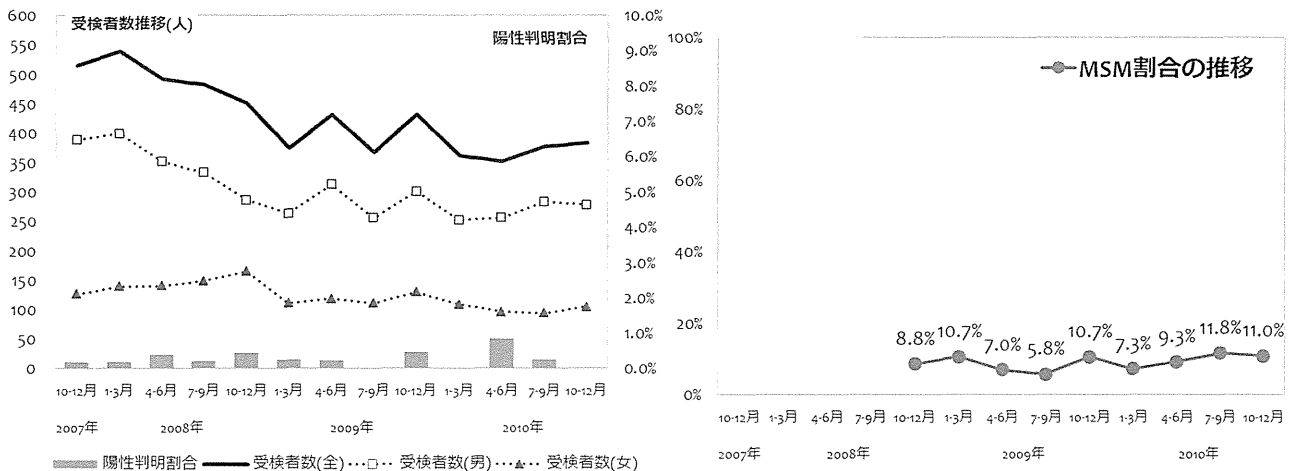
Men who have sex with men																	
(年度)	2007				2008				2009				2010				合計
(月)	1-3				4-6				7-9				10-12				
(計)	0	0	0	5	36	32	31	22	46	30	30	28	66	326			
年齢	24歳以下	0%	0%	0%	20%	22%	13%	23%	14%	11%	23%	17%	0%	20%	16%		
	25-34歳	0%	0%	0%	20%	47%	53%	52%	55%	48%	37%	60%	46%	50%	49%		
	35-44歳	0%	0%	0%	60%	22%	31%	19%	23%	30%	27%	20%	32%	20%	25%		
	45-54歳	0%	0%	0%	0%	6%	0%	6%	5%	4%	10%	3%	21%	9%	7%		
	55歳以上	0%	0%	0%	0%	3%	3%	0%	0%	7%	3%	0%	0%	2%	2%		
	無回答	0%	0%	0%	0%	0%	0%	0%	5%	0%	0%	0%	0%	0%	0%		
居住地	茨城県	0%	0%	0%	0%	0%	0%	0%	0%	0%	0%	0%	0%	0%	0%		
	栃木県	0%	0%	0%	0%	0%	0%	0%	0%	0%	0%	0%	0%	0%	0%		
	群馬県	0%	0%	0%	0%	0%	0%	0%	0%	0%	0%	0%	0%	0%	0%		
	埼玉県	0%	0%	0%	0%	0%	0%	3%	5%	4%	0%	0%	0%	2%	2%		
	千葉県	0%	0%	0%	0%	8%	3%	6%	5%	4%	0%	0%	0%	3%	3%		
	東京都	0%	0%	0%	40%	17%	13%	16%	27%	9%	10%	20%	18%	9%	14%		
	神奈川県	0%	0%	0%	60%	75%	84%	74%	64%	83%	90%	80%	82%	86%	81%		



(年度)	2007				2008				2009				2010				合計
	(月)	1-3	4-6	7-9	10-12	1-3	4-6	7-9	10-12	1-3	4-6	7-9	10-12				
男性受検者数	389	399	352	333	287	264	313	256	301	253	256	284	278	3965			
男性陽性者数	1	1	2	1	2	1	1	0	2	0	3	1	0	15			
女性受検者数	127	140	141	149	165	111	119	111	130	109	96	94	105	1597			
女性陽性者数	0	0	0	0	0	0	0	0	0	0	0	0	0	0			
その他受検者数	0	0	0	0	0	0	0	0	0	0	0	0	0	0			
その他陽性者数	0	0	0	0	0	0	0	0	0	0	0	0	0	0			
受検者計	516	539	493	482	452	375	432	367	431	362	352	378	383	5562			
陽性者計	1	1	2	1	2	1	1	0	2	0	3	1	0	15			
陽性判明割合(男)	0.26%	0.25%	0.57%	0.30%	0.70%	0.38%	0.32%	0.00%	0.66%	0.00%	1.17%	0.35%	0.00%	0.38%			
陽性判明割合(女)	0.00%	0.00%	0.00%	0.00%	0.00%	0.00%	0.00%	0.00%	0.00%	0.00%	0.00%	0.00%	0.00%	0.00%			
陽性判明割合(全)	0.19%	0.19%	0.41%	0.21%	0.44%	0.27%	0.23%	0.00%	0.46%	0.00%	0.85%	0.26%	0.00%	0.27%			

(年度)	2007				2008				2009				2010				合計
	(月)	1-3	4-6	7-9	10-12	1-3	4-6	7-9	10-12	1-3	4-6	7-9	10-12				
回収数	0	0	0	0	168	234	228	196	235	274	304	366	354	2359			
回収率	0.0%	0.0%	0.0%	0.0%	37.2%	62.4%	52.8%	53.4%	54.5%	75.7%	86.4%	96.8%	92.4%				
分析対象者数	0	0	0	0	160	215	213	173	215	261	281	340	328	2186			
有効回収率	0.0%	0.0%	0.0%	0.0%	35.4%	57.3%	49.3%	47.1%	49.9%	72.1%	79.8%	89.9%	85.6%				

(年度)	2007				2008				2009				2010				合計
	(月)	1-3	4-6	7-9	10-12	1-3	4-6	7-9	10-12	1-3	4-6	7-9	10-12				
MSM除く男性(n)	0	0	0	0	86	135	150	113	130	171	175	217	203	1380			
(%)	0.0%	0.0%	0.0%	0.0%	53.8%	62.8%	70.4%	65.3%	60.5%	65.5%	62.3%	63.8%	61.9%	63.1%			
女性(n)	0	0	0	0	59	57	48	50	62	71	80	83	89	599			
(%)	0.0%	0.0%	0.0%	0.0%	36.9%	26.5%	22.5%	28.9%	28.8%	27.2%	28.5%	24.4%	27.1%	27.4%			
その他(n)	0	0	0	0	1	0	0	0	0	0	0	0	0	1			
(%)	0.0%	0.0%	0.0%	0.0%	0.6%	0.0%	0.0%	0.0%	0.0%	0.0%	0.0%	0.0%	0.0%	0.0%			
MSM(n)	0	0	0	0	14	23	15	10	23	19	26	40	36	206			
(%)	0.0%	0.0%	0.0%	0.0%	8.8%	10.7%	7.0%	5.8%	10.7%	7.3%	9.3%	11.8%	11.0%	9.4%			



○ 性別および性指向別の基本属性 (年齢割合・居住地割合)

財団法人結核予防会神奈川県支部

神奈川

MSM(Men who have sex with men)を除く男性														
(年度)	2007	2008				2009				2010				合計
(月)	1-3	4-6	7-9	10-12	1-3	4-6	7-9	10-12	1-3	4-6	7-9	10-12	合計	
(計)	0	0	0	86	135	150	113	130	171	175	217	203	1380	
年齢	24歳以下	0%	0%	0%	8%	10%	21%	12%	16%	18%	13%	16%	15%	15%
	25-34歳	0%	0%	0%	64%	47%	47%	45%	42%	49%	49%	49%	48%	48%
	35-44歳	0%	0%	0%	17%	31%	21%	27%	22%	20%	23%	22%	23%	23%
	45-54歳	0%	0%	0%	6%	6%	9%	10%	12%	8%	9%	9%	7%	8%
	55歳以上	0%	0%	0%	3%	6%	2%	6%	7%	5%	7%	5%	7%	6%
	無回答	0%	0%	0%	1%	0%	0%	0%	1%	0%	0%	0%	0%	0%
居住地	茨城県	0%	0%	0%	0%	1%	0%	0%	0%	1%	0%	0%	0%	0%
	栃木県	0%	0%	0%	0%	0%	0%	0%	0%	0%	0%	0%	0%	0%
	群馬県	0%	0%	0%	0%	0%	0%	0%	0%	0%	0%	0%	0%	0%
	埼玉県	0%	0%	0%	3%	1%	1%	1%	2%	1%	1%	1%	0%	1%
	千葉県	0%	0%	0%	1%	0%	3%	0%	2%	3%	3%	2%	3%	2%
	東京都	0%	0%	0%	9%	6%	9%	4%	5%	5%	8%	5%	7%	6%
	神奈川県	0%	0%	0%	86%	92%	88%	95%	92%	90%	88%	92%	89%	90%

女性														
(年度)	2007	2008				2009				2010				合計
(月)	1-3	4-6	7-9	10-12	1-3	4-6	7-9	10-12	1-3	4-6	7-9	10-12	合計	
(計)	0	0	0	59	57	48	50	62	71	80	83	89	599	
年齢	24歳以下	0%	0%	0%	27%	25%	38%	40%	27%	37%	28%	30%	29%	31%
	25-34歳	0%	0%	0%	58%	53%	52%	36%	60%	49%	56%	55%	56%	53%
	35-44歳	0%	0%	0%	14%	11%	10%	18%	8%	14%	15%	11%	13%	13%
	45-54歳	0%	0%	0%	0%	4%	0%	6%	3%	0%	1%	2%	0%	2%
	55歳以上	0%	0%	0%	2%	2%	0%	0%	2%	0%	0%	0%	0%	1%
	無回答	0%	0%	0%	0%	7%	0%	0%	0%	0%	0%	1%	1%	1%
居住地	茨城県	0%	0%	0%	0%	0%	0%	0%	2%	0%	0%	0%	0%	0%
	栃木県	0%	0%	0%	0%	0%	2%	0%	0%	0%	0%	0%	0%	0%
	群馬県	0%	0%	0%	0%	0%	0%	0%	0%	0%	0%	0%	0%	0%
	埼玉県	0%	0%	0%	0%	0%	0%	0%	0%	1%	4%	0%	1%	1%
	千葉県	0%	0%	0%	2%	0%	2%	0%	0%	3%	0%	0%	2%	1%
	東京都	0%	0%	0%	10%	5%	13%	6%	18%	6%	8%	10%	16%	10%
	神奈川県	0%	0%	0%	88%	95%	83%	94%	81%	90%	89%	90%	81%	88%

Men who have sex with men														
(年度)	2007	2008				2009				2010				合計
(月)	1-3	4-6	7-9	10-12	1-3	4-6	7-9	10-12	1-3	4-6	7-9	10-12	合計	
(計)	0	0	0	14	23	15	10	23	19	26	40	36	206	
年齢	24歳以下	0%	0%	0%	0%	17%	13%	30%	9%	16%	19%	23%	19%	17%
	25-34歳	0%	0%	0%	57%	43%	60%	60%	65%	47%	42%	45%	42%	49%
	35-44歳	0%	0%	0%	36%	17%	27%	10%	26%	16%	19%	28%	31%	24%
	45-54歳	0%	0%	0%	7%	17%	0%	0%	0%	11%	12%	0%	6%	6%
	55歳以上	0%	0%	0%	0%	4%	0%	0%	0%	11%	8%	5%	3%	4%
	無回答	0%	0%	0%	0%	0%	0%	0%	0%	0%	0%	0%	0%	0%
居住地	茨城県	0%	0%	0%	0%	0%	0%	0%	0%	0%	0%	0%	3%	0%
	栃木県	0%	0%	0%	0%	0%	0%	0%	0%	0%	0%	0%	0%	0%
	群馬県	0%	0%	0%	0%	0%	0%	0%	0%	0%	0%	0%	3%	0%
	埼玉県	0%	0%	0%	0%	0%	0%	0%	0%	0%	0%	5%	0%	1%
	千葉県	0%	0%	0%	0%	9%	0%	0%	0%	0%	0%	3%	0%	1%
	東京都	0%	0%	0%	0%	9%	0%	0%	4%	11%	8%	5%	17%	7%
	神奈川県	0%	0%	0%	100%	83%	100%	100%	96%	89%	92%	88%	78%	89%

首都圏(保健所)

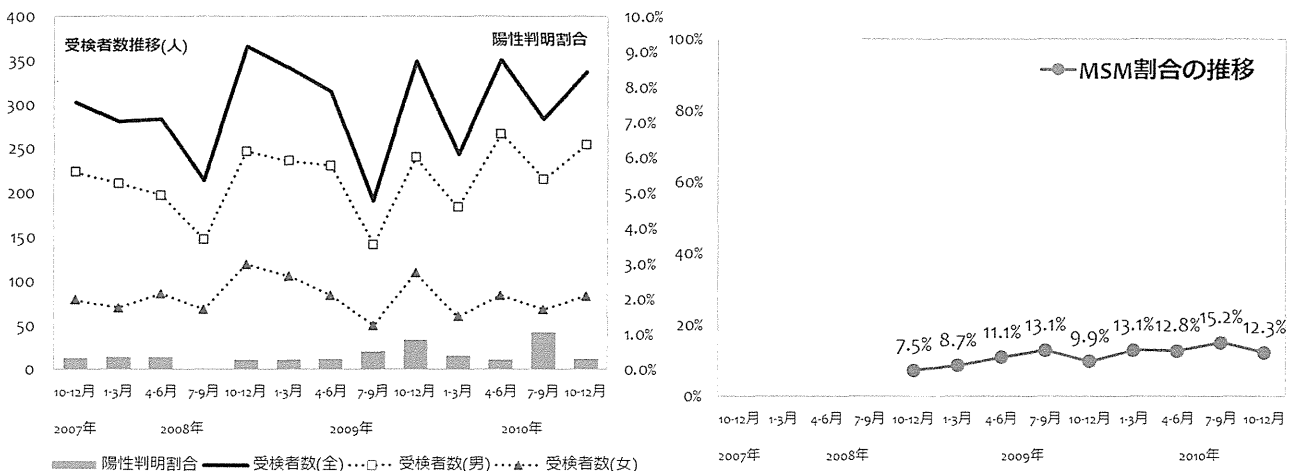
神奈川県保健福祉局



	2007				2008				2009				2010				合計
	(年度)	(月)			(年度)	(月)			(年度)	(月)			(年度)	(月)			
男性受検者数	224	211	198	147	247	236	231	142	240	184	267	216	254	2797			
男性陽性者数	1	1	0	0	1	1	1	1	3	0	1	2	1	13			
女性受検者数	79	70	86	68	119	106	84	50	109	60	84	68	83	1066			
女性陽性者数	0	0	1	0	0	0	0	0	0	1	0	1	0	3			
その他受検者数	0	0	0	0	0	0	0	0	0	0	0	0	0	0			
その他陽性者数	0	0	0	0	0	0	0	0	0	0	0	0	0	0			
受検者計	303	281	284	215	366	342	315	192	349	244	351	284	337	3863			
陽性者計	1	1	1	0	1	1	1	1	3	1	1	3	1	16			
陽性判明割合(男)	0.45%	0.47%	0.00%	0.00%	0.40%	0.42%	0.43%	0.70%	1.25%	0.00%	0.37%	0.93%	0.39%	0.46%			
陽性判明割合(女)	0.00%	0.00%	1.16%	0.00%	0.00%	0.00%	0.00%	0.00%	0.00%	1.67%	0.00%	1.47%	0.00%	0.28%			
陽性判明割合(全)	0.33%	0.36%	0.35%	0.00%	0.27%	0.29%	0.32%	0.52%	0.86%	0.41%	0.28%	1.06%	0.30%	0.41%			

	2007				2008				2009				2010				合計
	(年度)	(月)			(年度)	(月)			(年度)	(月)			(年度)	(月)			
回収数	0	0	0	0	277	315	249	165	304	216	308	251	284	2369			
回収率	0.0%	0.0%	0.0%	0.0%	75.7%	92.1%	79.0%	85.9%	87.1%	88.5%	87.7%	88.4%	84.3%				
分析対象者数	0	0	0	0	255	298	235	153	273	199	282	237	268	2200			
有効回収率	0.0%	0.0%	0.0%	0.0%	69.7%	87.1%	74.6%	79.7%	78.2%	81.6%	80.3%	83.5%	79.5%				

	2007				2008				2009				2010				合計
	(年度)	(月)			(年度)	(月)			(年度)	(月)			(年度)	(月)			
MSM除く男性(n)	0	0	0	0	152	180	152	95	161	123	179	145	174	1361			
(%)	0.0%	0.0%	0.0%	0.0%	59.6%	60.4%	64.7%	62.1%	59.0%	61.8%	63.5%	61.2%	64.9%	61.9%			
女性(n)	0	0	0	0	84	92	57	38	85	50	67	56	61	590			
(%)	0.0%	0.0%	0.0%	0.0%	32.9%	30.9%	24.3%	24.8%	31.1%	25.1%	23.8%	23.6%	22.8%	26.8%			
その他(n)	0	0	0	0	0	0	0	0	0	0	0	0	0	0			
(%)	0.0%	0.0%	0.0%	0.0%	0.0%	0.0%	0.0%	0.0%	0.0%	0.0%	0.0%	0.0%	0.0%	0.0%			
MSM(n)	0	0	0	0	19	26	26	20	27	26	36	36	33	249			
(%)	0.0%	0.0%	0.0%	0.0%	7.5%	8.7%	11.1%	13.1%	9.9%	13.1%	12.8%	15.2%	12.3%	11.3%			



○ 性別および性指向別の基本属性 (年齢割合・居住地割合)

神奈川県保健福祉局



MSM(Men who have sex with men)を除く男性														
(年度)	2007	2008				2009				2010				合計
(月)	1-3	4-6	7-9	10-12	1-3	4-6	7-9	10-12	1-3	4-6	7-9	10-12		
(計)	0	0	0	152	180	152	95	161	123	179	145	174	1361	
年齢	24歳以下	0%	0%	0%	18%	20%	19%	14%	14%	16%	20%	19%	22%	18%
	25-34歳	0%	0%	0%	49%	43%	49%	49%	53%	59%	56%	46%	50%	50%
	35-44歳	0%	0%	0%	26%	31%	26%	31%	23%	16%	17%	24%	18%	23%
	45-54歳	0%	0%	0%	5%	4%	4%	5%	7%	8%	4%	10%	7%	6%
	55歳以上	0%	0%	0%	2%	2%	2%	1%	2%	1%	2%	1%	2%	2%
	無回答	0%	0%	0%	0%	0%	0%	0%	1%	0%	0%	0%	1%	0%
居住地	茨城県	0%	0%	0%	0%	0%	0%	0%	1%	1%	2%	1%	0%	1%
	栃木県	0%	0%	0%	0%	1%	0%	0%	0%	0%	0%	0%	0%	0%
	群馬県	0%	0%	0%	2%	0%	0%	0%	0%	0%	1%	1%	0%	0%
	埼玉県	0%	0%	0%	0%	1%	1%	2%	0%	2%	0%	2%	1%	1%
	千葉県	0%	0%	0%	1%	1%	1%	1%	1%	2%	1%	1%	3%	1%
	東京都	0%	0%	0%	8%	11%	11%	3%	9%	11%	12%	10%	7%	10%
	神奈川県	0%	0%	0%	89%	86%	88%	94%	89%	84%	84%	86%	88%	87%

女性														
(年度)	2007	2008				2009				2010				合計
(月)	1-3	4-6	7-9	10-12	1-3	4-6	7-9	10-12	1-3	4-6	7-9	10-12		
(計)	0	0	0	84	92	57	38	85	50	67	56	61	590	
年齢	24歳以下	0%	0%	0%	40%	33%	53%	47%	36%	46%	43%	43%	43%	42%
	25-34歳	0%	0%	0%	46%	57%	40%	47%	58%	44%	43%	45%	48%	48%
	35-44歳	0%	0%	0%	10%	9%	2%	5%	6%	10%	10%	9%	8%	8%
	45-54歳	0%	0%	0%	4%	1%	5%	0%	0%	0%	3%	4%	2%	2%
	55歳以上	0%	0%	0%	0%	0%	0%	0%	0%	0%	0%	0%	0%	0%
	無回答	0%	0%	0%	0%	1%	0%	0%	0%	0%	0%	0%	0%	0%
居住地	茨城県	0%	0%	0%	0%	1%	0%	0%	0%	0%	0%	0%	0%	0%
	栃木県	0%	0%	0%	0%	0%	0%	0%	0%	0%	0%	0%	0%	0%
	群馬県	0%	0%	0%	1%	0%	0%	0%	0%	0%	0%	0%	0%	0%
	埼玉県	0%	0%	0%	1%	5%	2%	5%	1%	2%	1%	0%	2%	2%
	千葉県	0%	0%	0%	4%	0%	2%	5%	1%	0%	1%	0%	2%	2%
	東京都	0%	0%	0%	15%	8%	12%	3%	8%	8%	15%	20%	10%	11%
	神奈川県	0%	0%	0%	79%	86%	84%	87%	89%	90%	82%	80%	87%	85%

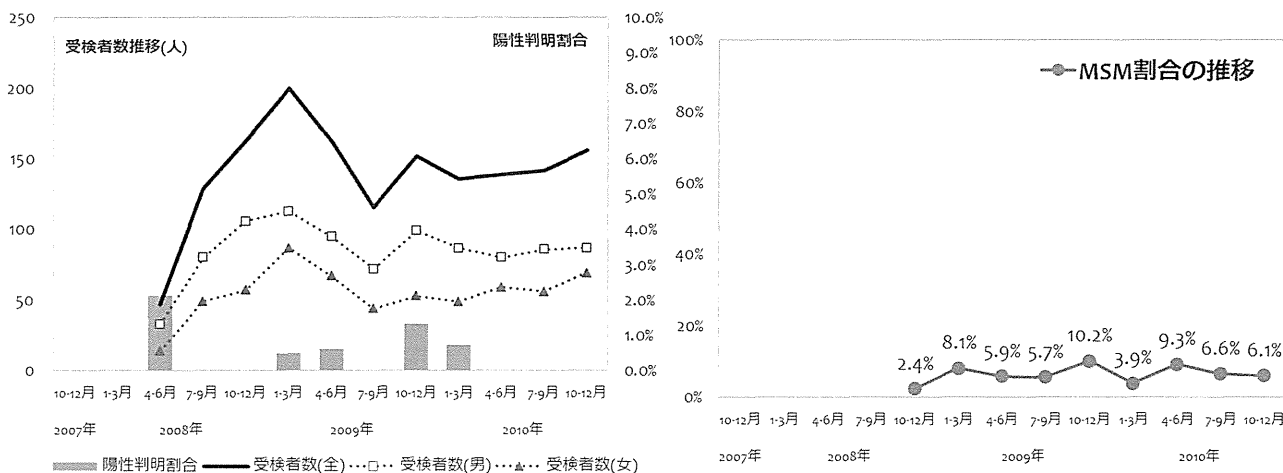
Men who have sex with men														
(年度)	2007	2008				2009				2010				合計
(月)	1-3	4-6	7-9	10-12	1-3	4-6	7-9	10-12	1-3	4-6	7-9	10-12		
(計)	0	0	0	19	26	26	20	27	26	36	36	33	249	
年齢	24歳以下	0%	0%	0%	26%	31%	19%	35%	37%	46%	31%	28%	30%	31%
	25-34歳	0%	0%	0%	42%	46%	58%	35%	26%	15%	36%	28%	27%	34%
	35-44歳	0%	0%	0%	21%	23%	15%	20%	30%	19%	25%	22%	24%	22%
	45-54歳	0%	0%	0%	11%	0%	8%	10%	4%	8%	3%	11%	6%	6%
	55歳以上	0%	0%	0%	0%	0%	0%	0%	4%	12%	3%	11%	12%	5%
	無回答	0%	0%	0%	0%	0%	0%	0%	0%	0%	3%	0%	0%	0%
居住地	茨城県	0%	0%	0%	0%	0%	0%	0%	0%	0%	0%	0%	0%	0%
	栃木県	0%	0%	0%	0%	0%	0%	0%	0%	0%	0%	0%	0%	0%
	群馬県	0%	0%	0%	0%	0%	0%	0%	0%	0%	0%	0%	0%	0%
	埼玉県	0%	0%	0%	0%	4%	0%	0%	0%	0%	3%	0%	0%	1%
	千葉県	0%	0%	0%	5%	0%	4%	0%	0%	0%	6%	3%	0%	2%
	東京都	0%	0%	0%	26%	8%	23%	10%	30%	4%	17%	17%	18%	17%
	神奈川県	0%	0%	0%	68%	88%	73%	90%	70%	96%	75%	81%	82%	80%



(年度)	2007				2008				2009				2010				合計
	(月)				1-3	4-6	7-9	10-12	1-3	4-6	7-9	10-12	1-3	4-6	7-9	10-12	
男性受検者数					33	80	106	113	95	72	99	87	80	86	87	938	
男性陽性者数					1	0	0	1	1	0	2	1	0	0	0	6	
女性受検者数					14	49	57	87	67	44	53	49	59	56	69	604	
女性陽性者数					0	0	0	0	0	0	0	0	0	0	0	0	
その他受検者数					0	0	0	0	0	0	0	0	0	0	0	0	
その他陽性者数					0	0	0	0	0	0	0	0	0	0	0	0	
受検者計					47	129	163	200	162	116	152	136	139	142	156	1542	
陽性者計					1	0	0	1	1	0	2	1	0	0	0	6	
陽性判明割合(男)					3.03%	0.00%	0.00%	0.88%	1.05%	0.00%	2.02%	1.15%	0.00%	0.00%	0.00%	0.64%	
陽性判明割合(女)					0.00%	0.00%	0.00%	0.00%	0.00%	0.00%	0.00%	0.00%	0.00%	0.00%	0.00%	0.00%	
陽性判明割合(全)					2.13%	0.00%	0.00%	0.50%	0.62%	0.00%	1.32%	0.74%	0.00%	0.00%	0.00%	0.39%	

(年度)	2007				2008				2009				2010				合計
	(月)				1-3	4-6	7-9	10-12	1-3	4-6	7-9	10-12	1-3	4-6	7-9	10-12	
回収数					0	0	45	198	161	114	151	136	136	141	156	1238	
回収率					0.0%	0.0%	27.6%	99.0%	99.4%	98.3%	99.3%	100.0%	97.8%	99.3%	100.0%		
分析対象者数					0	0	42	185	153	106	137	127	129	137	147	1163	
有効回収率					0.0%	0.0%	25.8%	92.5%	94.4%	91.4%	90.1%	93.4%	92.8%	96.5%	94.2%		

(年度)	2007				2008				2009				2010				合計
	(月)				1-3	4-6	7-9	10-12	1-3	4-6	7-9	10-12	1-3	4-6	7-9	10-12	
MSM除く男性(n)					0	0	29	90	82	62	72	78	64	73	72	622	
(%)					0.0%	0.0%	69.0%	48.6%	53.6%	58.5%	52.6%	61.4%	49.6%	53.3%	49.0%	53.5%	
女性(n)					0	0	12	79	62	38	51	44	53	55	66	460	
(%)					0.0%	0.0%	28.6%	42.7%	40.5%	35.8%	37.2%	34.6%	41.1%	40.1%	44.9%	39.6%	
その他(n)					0	0	0	1	0	0	0	0	0	0	0	1	
(%)					0.0%	0.0%	0.0%	0.5%	0.0%	0.0%	0.0%	0.0%	0.0%	0.0%	0.0%	0.1%	
MSM(n)					0	0	1	15	9	6	14	5	12	9	9	80	
(%)					0.0%	0.0%	2.4%	8.1%	5.9%	5.7%	10.2%	3.9%	9.3%	6.6%	6.1%	6.9%	



○ 性別および性指向別の基本属性 (年齢割合・居住地割合)

財団法人神奈川県予防医学協会



MSM(Men who have sex with men)を除く男性														
(年度)	2007	2008				2009				2010				合計
(月)	1-3	4-6	7-9	10-12	1-3	4-6	7-9	10-12	1-3	4-6	7-9	10-12		
(計)	0 0 29 90 82 62 72 78 64 73 72 622													
年齢	24歳以下	0%	0%	10%	22%	20%	8%	22%	10%	17%	21%	21%	18%	
	25-34歳	0%	0%	48%	43%	52%	56%	43%	53%	52%	45%	54%	50%	
	35-44歳	0%	0%	24%	26%	23%	26%	25%	31%	23%	26%	19%	25%	
	45-54歳	0%	0%	7%	8%	2%	10%	4%	6%	5%	4%	4%	5%	
	55歳以上	0%	0%	10%	1%	1%	0%	6%	0%	3%	3%	1%	2%	
	無回答	0%	0%	0%	0%	1%	0%	0%	0%	0%	1%	0%	0%	
居住地	茨城県	0%	0%	0%	0%	1%	0%	0%	0%	0%	0%	1%	0%	
	栃木県	0%	0%	0%	0%	0%	0%	0%	0%	0%	0%	0%	0%	
	群馬県	0%	0%	0%	0%	0%	0%	0%	0%	0%	0%	0%	0%	
	埼玉県	0%	0%	0%	1%	4%	0%	0%	0%	0%	0%	0%	1%	
	千葉県	0%	0%	0%	1%	1%	2%	3%	0%	2%	0%	1%	1%	
	東京都	0%	0%	3%	6%	9%	8%	4%	12%	13%	4%	17%	9%	
	神奈川県	0%	0%	97%	92%	85%	90%	93%	88%	86%	96%	81%	89%	

女性														
(年度)	2007	2008				2009				2010				合計
(月)	1-3	4-6	7-9	10-12	1-3	4-6	7-9	10-12	1-3	4-6	7-9	10-12		
(計)	0 0 12 79 62 38 51 44 53 55 66 460													
年齢	24歳以下	0%	0%	17%	47%	29%	32%	27%	23%	49%	31%	39%	35%	
	25-34歳	0%	0%	67%	39%	60%	63%	63%	64%	42%	55%	48%	53%	
	35-44歳	0%	0%	17%	9%	11%	3%	8%	14%	8%	13%	11%	10%	
	45-54歳	0%	0%	0%	3%	0%	0%	2%	0%	2%	2%	2%	1%	
	55歳以上	0%	0%	0%	1%	0%	0%	0%	0%	0%	0%	0%	0%	
	無回答	0%	0%	0%	1%	0%	3%	0%	0%	0%	0%	0%	0%	
居住地	茨城県	0%	0%	0%	0%	2%	0%	0%	0%	0%	0%	0%	0%	
	栃木県	0%	0%	0%	0%	0%	0%	0%	0%	0%	0%	0%	0%	
	群馬県	0%	0%	0%	0%	0%	0%	0%	0%	0%	0%	0%	0%	
	埼玉県	0%	0%	0%	0%	3%	0%	2%	0%	0%	2%	3%	1%	
	千葉県	0%	0%	0%	1%	2%	5%	2%	0%	4%	0%	3%	2%	
	東京都	0%	0%	0%	8%	10%	8%	10%	5%	13%	5%	9%	8%	
	神奈川県	0%	0%	100%	91%	84%	87%	86%	95%	83%	93%	85%	88%	

Men who have sex with men														
(年度)	2007	2008				2009				2010				合計
(月)	1-3	4-6	7-9	10-12	1-3	4-6	7-9	10-12	1-3	4-6	7-9	10-12		
(計)	0 0 1 15 9 6 14 5 12 9 9 80													
年齢	24歳以下	0%	0%	0%	13%	56%	0%	21%	0%	8%	22%	22%	19%	
	25-34歳	0%	0%	0%	27%	11%	50%	64%	60%	33%	67%	56%	44%	
	35-44歳	0%	0%	0%	53%	11%	33%	7%	20%	50%	11%	22%	28%	
	45-54歳	0%	0%	0%	7%	22%	17%	7%	20%	8%	0%	0%	9%	
	55歳以上	0%	0%	100%	0%	0%	0%	0%	0%	0%	0%	0%	1%	
	無回答	0%	0%	0%	0%	0%	0%	0%	0%	0%	0%	0%	0%	
居住地	茨城県	0%	0%	0%	0%	0%	0%	0%	0%	0%	0%	0%	0%	
	栃木県	0%	0%	0%	0%	0%	0%	0%	0%	0%	0%	0%	0%	
	群馬県	0%	0%	0%	0%	0%	0%	0%	0%	0%	0%	0%	0%	
	埼玉県	0%	0%	0%	0%	11%	0%	0%	0%	0%	0%	0%	1%	
	千葉県	0%	0%	0%	0%	0%	0%	0%	0%	0%	0%	0%	0%	
	東京都	0%	0%	0%	13%	0%	0%	14%	0%	0%	33%	11%	10%	
	神奈川県	0%	0%	100%	87%	89%	100%	86%	100%	100%	67%	89%	89%	

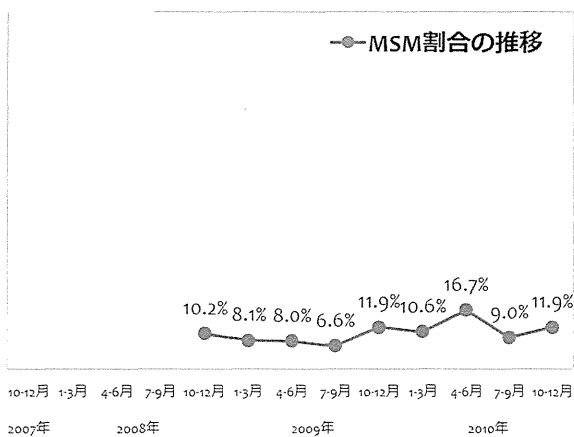
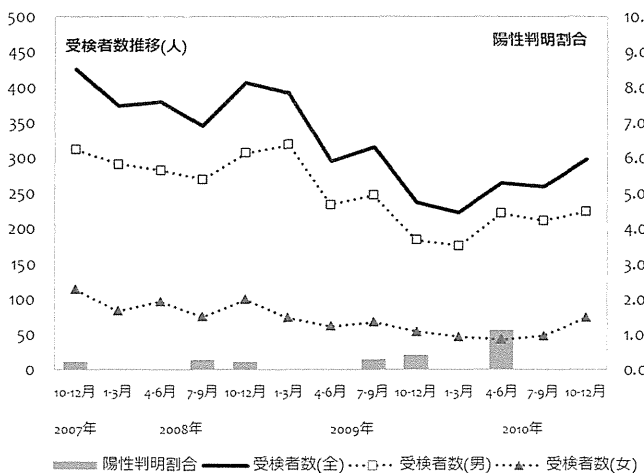


	2007				2008				2009				2010				合計
	(年度)	(月)			(年度)	(月)			(年度)	(月)			(年度)	(月)			
男性受検者数	312	291	283	270	307	319	234	248	184	176	222	212	224	3282			
男性陽性者数	1	0	0	1	1	0	0	1	1	0	2	0	0	7			
女性受検者数	114	83	97	75	100	74	62	68	54	47	43	48	74	939			
女性陽性者数	0	0	0	0	0	0	0	0	0	0	1	0	0	1			
その他受検者数	0	0	0	0	0	0	0	0	0	0	0	0	0	0			
その他陽性者数	0	0	0	0	0	0	0	0	0	0	0	0	0	0			
受検者計	426	374	380	345	407	393	296	316	238	223	265	260	298	4221			
陽性者計	1	0	0	1	1	0	0	1	1	0	3	0	0	8			

陽性判明割合(男)	0.32%	0.00%	0.00%	0.37%	0.33%	0.00%	0.00%	0.40%	0.54%	0.00%	0.90%	0.00%	0.00%	0.21%
陽性判明割合(女)	0.00%	0.00%	0.00%	0.00%	0.00%	0.00%	0.00%	0.00%	0.00%	0.00%	2.33%	0.00%	0.00%	0.11%
陽性判明割合(全)	0.23%	0.00%	0.00%	0.29%	0.25%	0.00%	0.00%	0.32%	0.42%	0.00%	1.13%	0.00%	0.00%	0.19%

	2007				2008				2009				2010				合計
	(年度)	(月)			(年度)	(月)			(年度)	(月)			(年度)	(月)			
回収数	0	0	0	0	133	292	219	243	206	90	64	93	129	1469			
回収率	0.0%	0.0%	0.0%	0.0%	32.7%	74.3%	74.0%	76.9%	86.6%	40.4%	24.2%	35.8%	43.3%				
分析対象者数	0	0	0	0	128	284	212	229	193	85	60	89	118	1398			
有効回収率	0.0%	0.0%	0.0%	0.0%	31.4%	72.3%	71.6%	72.5%	81.1%	38.1%	22.6%	34.2%	39.6%				

	2007				2008				2009				2010				合計
	(年度)	(月)			(年度)	(月)			(年度)	(月)			(年度)	(月)			
MSM除く男性(n)	0	0	0	0	79	207	152	160	124	56	43	69	82	972			
(%)	0.0%	0.0%	0.0%	0.0%	61.7%	72.9%	71.7%	69.9%	64.2%	65.9%	71.7%	77.5%	69.5%	69.5%			
女性(n)	0	0	0	0	36	54	43	54	46	20	7	12	22	294			
(%)	0.0%	0.0%	0.0%	0.0%	28.1%	19.0%	20.3%	23.6%	23.8%	23.5%	11.7%	13.5%	18.6%	21.0%			
その他(n)	0	0	0	0	0	0	0	0	0	0	0	0	0	0			
(%)	0.0%	0.0%	0.0%	0.0%	0.0%	0.0%	0.0%	0.0%	0.0%	0.0%	0.0%	0.0%	0.0%	0.0%			
MSM(n)	0	0	0	0	13	23	17	15	23	9	10	8	14	132			
(%)	0.0%	0.0%	0.0%	0.0%	10.2%	8.1%	8.0%	6.6%	11.9%	10.6%	16.7%	9.0%	11.9%	9.4%			



○ 性別および性指向別の基本属性 (年齢割合・居住地割合)

川崎市健康福祉局

神奈川

MSM(Men who have sex with men)を除く男性																		
	(年度)	2007				2008				2009				2010				合計
		(月)	1-3	4-6	7-9	10-12	1-3	4-6	7-9	10-12	1-3	4-6	7-9	10-12				
			(計)	0	0	0	79	207	152	160	124	56	43	69	82	972		
年齢	24歳以下	0%	0%	0%	0%	16%	18%	18%	21%	10%	13%	14%	16%	10%	16%			
	25-34歳	0%	0%	0%	0%	51%	52%	40%	48%	49%	57%	49%	49%	63%	50%			
	35-44歳	0%	0%	0%	0%	24%	23%	32%	28%	28%	27%	28%	29%	22%	27%			
	45-54歳	0%	0%	0%	0%	5%	4%	9%	3%	10%	4%	5%	4%	5%	5%			
	55歳以上	0%	0%	0%	0%	4%	3%	1%	1%	2%	0%	5%	0%	0%	2%			
	無回答	0%	0%	0%	0%	0%	0%	0%	0%	0%	0%	0%	1%	0%	0%			
居住地	茨城県	0%	0%	0%	0%	0%	0%	0%	0%	2%	2%	2%	0%	0%	1%			
	栃木県	0%	0%	0%	0%	0%	0%	1%	0%	0%	0%	0%	0%	0%	0%			
	群馬県	0%	0%	0%	0%	0%	0%	0%	0%	0%	0%	0%	0%	0%	0%			
	埼玉県	0%	0%	0%	0%	3%	3%	2%	7%	1%	2%	2%	4%	1%	3%			
	千葉県	0%	0%	0%	0%	1%	4%	3%	6%	3%	2%	7%	3%	1%	4%			
	東京都	0%	0%	0%	0%	24%	25%	21%	29%	23%	30%	19%	23%	28%	25%			
	神奈川県	0%	0%	0%	0%	72%	67%	73%	59%	72%	64%	70%	70%	70%	68%			

女性																		
	(年度)	2007				2008				2009				2010				合計
		(月)	1-3	4-6	7-9	10-12	1-3	4-6	7-9	10-12	1-3	4-6	7-9	10-12				
			(計)	0	0	0	36	54	43	54	46	20	7	12	22	294		
年齢	24歳以下	0%	0%	0%	0%	28%	30%	33%	24%	30%	25%	14%	33%	55%	30%			
	25-34歳	0%	0%	0%	0%	61%	61%	56%	61%	52%	65%	86%	58%	36%	58%			
	35-44歳	0%	0%	0%	0%	8%	6%	12%	13%	15%	0%	0%	8%	9%	10%			
	45-54歳	0%	0%	0%	0%	3%	0%	0%	2%	2%	5%	0%	0%	0%	1%			
	55歳以上	0%	0%	0%	0%	0%	0%	0%	0%	0%	5%	0%	0%	0%	0%			
	無回答	0%	0%	0%	0%	0%	4%	0%	0%	0%	0%	0%	0%	0%	1%			
居住地	茨城県	0%	0%	0%	0%	0%	0%	0%	0%	0%	0%	0%	0%	0%	0%			
	栃木県	0%	0%	0%	0%	0%	0%	0%	0%	0%	0%	0%	0%	0%	0%			
	群馬県	0%	0%	0%	0%	0%	0%	0%	0%	0%	0%	0%	0%	0%	0%			
	埼玉県	0%	0%	0%	0%	0%	2%	0%	6%	2%	0%	0%	0%	5%	2%			
	千葉県	0%	0%	0%	0%	6%	2%	2%	2%	2%	0%	0%	8%	0%	2%			
	東京都	0%	0%	0%	0%	19%	24%	35%	28%	35%	45%	29%	17%	36%	30%			
	神奈川県	0%	0%	0%	0%	75%	72%	63%	65%	61%	55%	71%	75%	59%	66%			

Men who have sex with men																		
	(年度)	2007				2008				2009				2010				合計
		(月)	1-3	4-6	7-9	10-12	1-3	4-6	7-9	10-12	1-3	4-6	7-9	10-12				
			(計)	0	0	0	13	23	17	15	23	9	10	8	14	132		
年齢	24歳以下	0%	0%	0%	0%	15%	9%	24%	20%	13%	0%	20%	13%	7%	14%			
	25-34歳	0%	0%	0%	0%	46%	57%	47%	33%	48%	78%	50%	50%	71%	52%			
	35-44歳	0%	0%	0%	0%	31%	26%	29%	33%	39%	11%	30%	38%	21%	30%			
	45-54歳	0%	0%	0%	0%	8%	4%	0%	7%	0%	11%	0%	0%	0%	3%			
	55歳以上	0%	0%	0%	0%	0%	0%	0%	7%	0%	0%	0%	0%	0%	1%			
	無回答	0%	0%	0%	0%	0%	4%	0%	0%	0%	0%	0%	0%	0%	1%			
居住地	茨城県	0%	0%	0%	0%	0%	0%	0%	0%	0%	0%	0%	0%	0%	0%			
	栃木県	0%	0%	0%	0%	0%	0%	0%	0%	0%	0%	0%	0%	0%	0%			
	群馬県	0%	0%	0%	0%	0%	0%	0%	0%	0%	0%	0%	0%	0%	0%			
	埼玉県	0%	0%	0%	0%	0%	0%	0%	0%	0%	0%	0%	0%	0%	0%			
	千葉県	0%	0%	0%	0%	8%	4%	0%	7%	0%	0%	0%	0%	0%	2%			
	東京都	0%	0%	0%	0%	23%	26%	41%	40%	39%	44%	40%	50%	43%	37%			
	神奈川県	0%	0%	0%	0%	69%	70%	59%	53%	61%	56%	60%	50%	57%	61%			

首都圏(保健所)

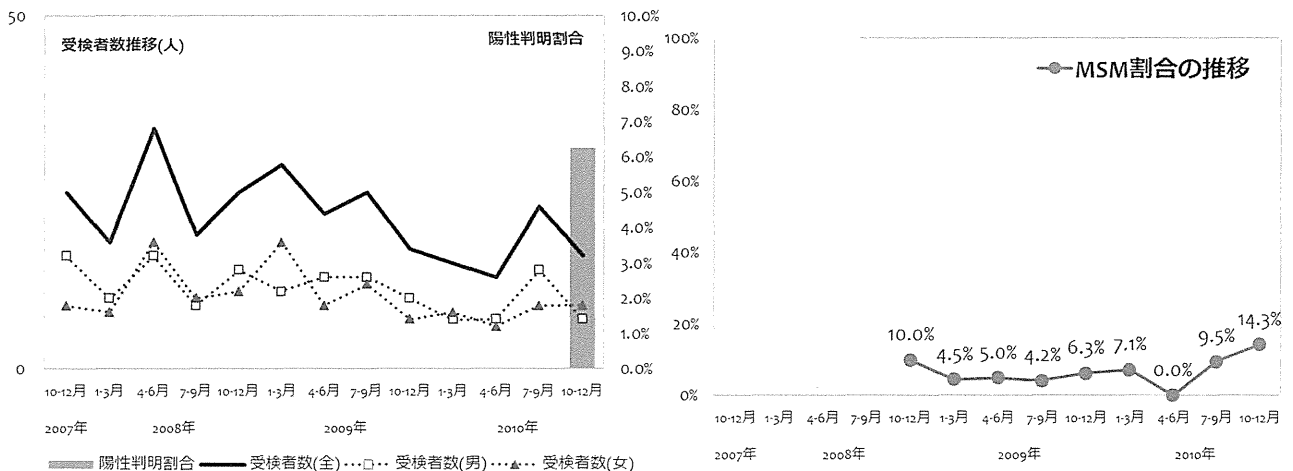
川崎市麻生保健福祉センター



	(年度)	2007				2008				2009				2010				合計
	(月)	1-3	4-6	7-9	10-12	1-3	4-6	7-9	10-12	1-3	4-6	7-9	10-12	1-3	4-6	7-9	10-12	
男性受検者数	16	10	16	9	14	11	13	13	10	7	7	14	7	147				
男性陽性者数	0	0	0	0	0	0	0	0	0	0	0	0	1	1				
女性受検者数	9	8	18	10	11	18	9	12	7	8	6	9	9	134				
女性陽性者数	0	0	0	0	0	0	0	0	0	0	0	0	0	0				
その他受検者数	0	0	0	0	0	0	0	0	0	0	0	0	0	0				
その他陽性者数	0	0	0	0	0	0	0	0	0	0	0	0	0	0				
受検者計	25	18	34	19	25	29	22	25	17	15	13	23	16	281				
陽性者計	0	0	0	0	0	0	0	0	0	0	0	0	1	1				
陽性判明割合(男)	0.00%	0.00%	0.00%	0.00%	0.00%	0.00%	0.00%	0.00%	0.00%	0.00%	0.00%	0.00%	14.29%	0.68%				
陽性判明割合(女)	0.00%	0.00%	0.00%	0.00%	0.00%	0.00%	0.00%	0.00%	0.00%	0.00%	0.00%	0.00%	0.00%	0.00%				
陽性判明割合(全)	0.00%	0.00%	0.00%	0.00%	0.00%	0.00%	0.00%	0.00%	0.00%	0.00%	0.00%	0.00%	6.25%	0.36%				

	(年度)	2007				2008				2009				2010				合計
	(月)	1-3	4-6	7-9	10-12	1-3	4-6	7-9	10-12	1-3	4-6	7-9	10-12	1-3	4-6	7-9	10-12	
回収数	0	0	0	0	11	24	20	24	16	14	13	23	15	160				
回収率	0.0%	0.0%	0.0%	0.0%	44.0%	82.8%	90.9%	96.0%	94.1%	93.3%	100.0%	100.0%	93.8%					
分析対象者数	0	0	0	0	10	22	20	24	16	14	12	21	14	153				
有効回収率	0.0%	0.0%	0.0%	0.0%	40.0%	75.9%	90.9%	96.0%	94.1%	93.3%	92.3%	91.3%	87.5%					

	(年度)	2007				2008				2009				2010				合計
	(月)	1-3	4-6	7-9	10-12	1-3	4-6	7-9	10-12	1-3	4-6	7-9	10-12	1-3	4-6	7-9	10-12	
MSM除く男性(n)	0	0	0	0	3	7	10	11	8	5	6	10	5	65				
(%)	0.0%	0.0%	0.0%	0.0%	30.0%	31.8%	50.0%	45.8%	50.0%	35.7%	50.0%	47.6%	35.7%	42.5%				
女性(n)	0	0	0	0	6	14	9	12	7	8	6	9	7	78				
(%)	0.0%	0.0%	0.0%	0.0%	60.0%	63.6%	45.0%	50.0%	43.8%	57.1%	50.0%	42.9%	50.0%	51.0%				
その他(n)	0	0	0	0	0	0	0	0	0	0	0	0	0	0				
(%)	0.0%	0.0%	0.0%	0.0%	0.0%	0.0%	0.0%	0.0%	0.0%	0.0%	0.0%	0.0%	0.0%	0.0%				
MSM(n)	0	0	0	0	1	1	1	1	1	1	0	2	2	10				
(%)	0.0%	0.0%	0.0%	0.0%	10.0%	4.5%	5.0%	4.2%	6.3%	7.1%	0.0%	9.5%	14.3%	6.5%				



○ 性別および性指向別の基本属性 (年齢割合・居住地割合)

川崎市麻生保健福祉センター



MSM(Men who have sex with men)を除く男性															
(年度)	2007	2008				2009				2010				合計	
(月)		1-3	4-6	7-9	10-12	1-3	4-6	7-9	10-12	1-3	4-6	7-9	10-12		
(計)	0	0	0	0	3	7	10	11	8	5	6	10	5	65	
年齢	24歳以下	0%	0%	0%	0%	0%	43%	20%	9%	0%	20%	0%	10%	20%	14%
	25-34歳	0%	0%	0%	0%	67%	14%	40%	45%	50%	20%	50%	80%	60%	48%
	35-44歳	0%	0%	0%	0%	0%	29%	20%	27%	38%	40%	50%	0%	20%	25%
	45-54歳	0%	0%	0%	0%	33%	0%	10%	0%	13%	0%	0%	0%	0%	5%
	55歳以上	0%	0%	0%	0%	0%	14%	10%	18%	0%	20%	0%	10%	0%	9%
	無回答	0%	0%	0%	0%	0%	0%	0%	0%	0%	0%	0%	0%	0%	0%
居住地	茨城県	0%	0%	0%	0%	0%	0%	0%	0%	0%	0%	0%	0%	0%	0%
	栃木県	0%	0%	0%	0%	0%	0%	0%	0%	0%	0%	0%	0%	0%	0%
	群馬県	0%	0%	0%	0%	0%	0%	0%	0%	0%	0%	0%	0%	0%	0%
	埼玉県	0%	0%	0%	0%	0%	0%	0%	0%	0%	0%	0%	0%	0%	0%
	千葉県	0%	0%	0%	0%	0%	0%	0%	0%	0%	0%	0%	0%	0%	0%
	東京都	0%	0%	0%	0%	0%	0%	0%	0%	13%	0%	17%	10%	20%	6%
	神奈川県	0%	0%	0%	0%	100%	100%	100%	100%	88%	100%	83%	90%	80%	94%

女性															
(年度)	2007	2008				2009				2010				合計	
(月)		1-3	4-6	7-9	10-12	1-3	4-6	7-9	10-12	1-3	4-6	7-9	10-12		
(計)	0	0	0	0	6	14	9	12	7	8	6	9	7	78	
年齢	24歳以下	0%	0%	0%	0%	17%	43%	78%	67%	43%	50%	33%	33%	14%	45%
	25-34歳	0%	0%	0%	0%	67%	57%	22%	25%	14%	13%	33%	56%	57%	38%
	35-44歳	0%	0%	0%	0%	17%	0%	0%	0%	29%	25%	33%	0%	14%	10%
	45-54歳	0%	0%	0%	0%	0%	0%	0%	8%	0%	13%	0%	11%	0%	4%
	55歳以上	0%	0%	0%	0%	0%	0%	0%	14%	0%	0%	0%	0%	14%	3%
	無回答	0%	0%	0%	0%	0%	0%	0%	0%	0%	0%	0%	0%	0%	0%
居住地	茨城県	0%	0%	0%	0%	0%	0%	0%	0%	0%	0%	0%	0%	0%	0%
	栃木県	0%	0%	0%	0%	0%	0%	0%	0%	0%	0%	0%	0%	0%	0%
	群馬県	0%	0%	0%	0%	0%	0%	0%	0%	0%	0%	0%	0%	0%	0%
	埼玉県	0%	0%	0%	0%	0%	0%	0%	0%	0%	0%	0%	0%	0%	0%
	千葉県	0%	0%	0%	0%	0%	0%	0%	0%	0%	0%	0%	0%	0%	0%
	東京都	0%	0%	0%	0%	17%	21%	11%	8%	14%	0%	0%	22%	14%	13%
	神奈川県	0%	0%	0%	0%	83%	79%	89%	92%	86%	100%	100%	78%	86%	87%

Men who have sex with men															
(年度)	2007	2008				2009				2010				合計	
(月)		1-3	4-6	7-9	10-12	1-3	4-6	7-9	10-12	1-3	4-6	7-9	10-12		
(計)	0	0	0	0	1	1	1	1	1	1	0	2	2	10	
年齢	24歳以下	0%	0%	0%	0%	100%	100%	100%	100%	0%	100%	0%	50%	50%	70%
	25-34歳	0%	0%	0%	0%	0%	0%	0%	0%	0%	0%	0%	0%	50%	10%
	35-44歳	0%	0%	0%	0%	0%	0%	0%	0%	100%	0%	0%	50%	0%	20%
	45-54歳	0%	0%	0%	0%	0%	0%	0%	0%	0%	0%	0%	0%	0%	0%
	55歳以上	0%	0%	0%	0%	0%	0%	0%	0%	0%	0%	0%	0%	0%	0%
	無回答	0%	0%	0%	0%	0%	0%	0%	0%	0%	0%	0%	0%	0%	0%
居住地	茨城県	0%	0%	0%	0%	0%	0%	0%	0%	0%	0%	0%	0%	0%	0%
	栃木県	0%	0%	0%	0%	0%	0%	0%	0%	0%	0%	0%	0%	0%	0%
	群馬県	0%	0%	0%	0%	0%	0%	0%	0%	0%	0%	0%	0%	0%	0%
	埼玉県	0%	0%	0%	0%	0%	0%	0%	0%	0%	0%	0%	0%	0%	0%
	千葉県	0%	0%	0%	0%	0%	0%	0%	0%	0%	0%	0%	0%	0%	0%
	東京都	0%	0%	0%	0%	0%	0%	0%	0%	0%	100%	0%	0%	0%	10%
	神奈川県	0%	0%	0%	0%	100%	100%	100%	100%	100%	0%	0%	100%	100%	90%

首都圏(保健所)

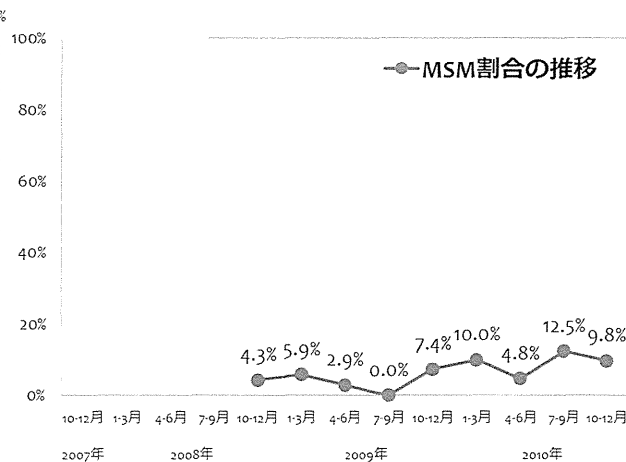
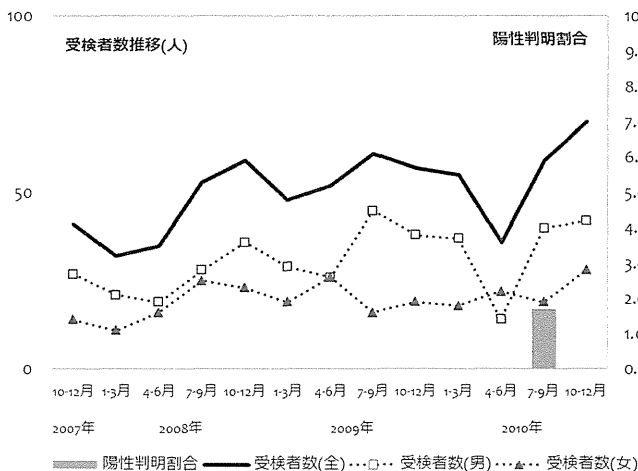
川崎市川崎保健福祉センター



	(年度)	2007				2008				2009				2010				合計
	(月)	1-3	4-6	7-9	10-12	1-3	4-6	7-9	10-12	1-3	4-6	7-9	10-12	1-3	4-6	7-9	10-12	
男性受検者数	27	21	19	28	36	29	26	45	38	37	14	40	42	402				
男性陽性者数	0	0	0	0	0	0	0	0	0	0	0	1	0	1				
女性受検者数	14	11	16	25	23	19	26	16	19	18	22	19	28	256				
女性陽性者数	0	0	0	0	0	0	0	0	0	0	0	0	0	0				
その他受検者数	0	0	0	0	0	0	0	0	0	0	0	0	0	0				
その他陽性者数	0	0	0	0	0	0	0	0	0	0	0	0	0	0				
受検者計	41	32	35	53	59	48	52	61	57	55	36	59	70	658				
陽性者計	0	0	0	0	0	0	0	0	0	0	0	1	0	1				
陽性判明割合(男)	0.00%	0.00%	0.00%	0.00%	0.00%	0.00%	0.00%	0.00%	0.00%	0.00%	0.00%	2.50%	0.00%	0.25%				
陽性判明割合(女)	0.00%	0.00%	0.00%	0.00%	0.00%	0.00%	0.00%	0.00%	0.00%	0.00%	0.00%	0.00%	0.00%	0.00%				
陽性判明割合(全)	0.00%	0.00%	0.00%	0.00%	0.00%	0.00%	0.00%	0.00%	0.00%	0.00%	0.00%	1.69%	0.00%	0.15%				

	(年度)	2007				2008				2009				2010				合計
	(月)	1-3	4-6	7-9	10-12	1-3	4-6	7-9	10-12	1-3	4-6	7-9	10-12	1-3	4-6	7-9	10-12	
回収数	0	0	0	0	25	37	37	29	30	32	22	35	54	301				
回収率	0.0%	0.0%	0.0%	0.0%	42.4%	77.1%	71.2%	47.5%	52.6%	58.2%	61.1%	59.3%	77.1%					
分析対象者数	0	0	0	0	23	34	34	26	27	30	21	32	51	278				
有効回収率	0.0%	0.0%	0.0%	0.0%	39.0%	70.8%	65.4%	42.6%	47.4%	54.5%	58.3%	54.2%	72.9%					

	(年度)	2007				2008				2009				2010				合計
	(月)	1-3	4-6	7-9	10-12	1-3	4-6	7-9	10-12	1-3	4-6	7-9	10-12	1-3	4-6	7-9	10-12	
MSM除く男性(n)	0	0	0	0	13	22	15	18	15	15	10	21	24	153				
(%)	0.0%	0.0%	0.0%	0.0%	56.5%	64.7%	44.1%	69.2%	55.6%	50.0%	47.6%	65.6%	47.1%	55.0%				
女性(n)	0	0	0	0	9	10	18	8	10	12	10	7	22	106				
(%)	0.0%	0.0%	0.0%	0.0%	39.1%	29.4%	52.9%	30.8%	37.0%	40.0%	47.6%	21.9%	43.1%	38.1%				
その他(n)	0	0	0	0	0	0	0	0	0	0	0	0	0	0				
(%)	0.0%	0.0%	0.0%	0.0%	0.0%	0.0%	0.0%	0.0%	0.0%	0.0%	0.0%	0.0%	0.0%	0.0%				
MSM(n)	0	0	0	0	1	2	1	0	2	3	1	4	5	19				
(%)	0.0%	0.0%	0.0%	0.0%	4.3%	5.9%	2.9%	0.0%	7.4%	10.0%	4.8%	12.5%	9.8%	6.8%				



○ 性別および性指向別の基本属性 (年齢割合・居住地割合)

川崎市川崎保健福祉センター



MSM(Men who have sex with men)を除く男性																		
	(年度)	2007				2008				2009				2010				合計
		(月)																
			1-3	4-6	7-9	10-12	1-3	4-6	7-9	10-12	1-3	4-6	7-9	10-12				
(計)	0	0	0	0	13	22	15	18	15	15	10	21	24	153				
年齢	24歳以下	0%	0%	0%	0%	23%	23%	7%	11%	20%	27%	50%	19%	13%	20%			
	25-34歳	0%	0%	0%	0%	15%	32%	33%	33%	40%	20%	20%	19%	50%	31%			
	35-44歳	0%	0%	0%	0%	23%	23%	20%	39%	27%	40%	30%	38%	21%	29%			
	45-54歳	0%	0%	0%	0%	15%	18%	27%	6%	13%	13%	0%	10%	8%	12%			
	55歳以上	0%	0%	0%	0%	15%	5%	13%	11%	0%	0%	0%	14%	8%	8%			
	無回答	0%	0%	0%	0%	8%	0%	0%	0%	0%	0%	0%	0%	0%	1%			
居住地	茨城県	0%	0%	0%	0%	0%	0%	0%	0%	0%	0%	0%	0%	0%	0%			
	栃木県	0%	0%	0%	0%	0%	0%	0%	0%	0%	0%	0%	0%	0%	0%			
	群馬県	0%	0%	0%	0%	0%	0%	0%	0%	0%	0%	0%	0%	0%	0%			
	埼玉県	0%	0%	0%	0%	0%	0%	0%	0%	0%	0%	0%	0%	0%	0%			
	千葉県	0%	0%	0%	0%	8%	5%	0%	0%	0%	0%	0%	0%	0%	1%			
	東京都	0%	0%	0%	0%	0%	5%	7%	17%	20%	0%	0%	10%	17%	9%			
	神奈川県	0%	0%	0%	0%	92%	91%	93%	83%	80%	100%	100%	90%	83%	90%			

女性																		
	(年度)	2007				2008				2009				2010				合計
		(月)																
			1-3	4-6	7-9	10-12	1-3	4-6	7-9	10-12	1-3	4-6	7-9	10-12				
(計)	0	0	0	0	9	10	18	8	10	12	10	7	22	106				
年齢	24歳以下	0%	0%	0%	0%	22%	40%	22%	38%	40%	17%	20%	29%	41%	30%			
	25-34歳	0%	0%	0%	0%	56%	50%	67%	50%	20%	67%	50%	43%	45%	51%			
	35-44歳	0%	0%	0%	0%	22%	10%	11%	13%	40%	8%	30%	14%	5%	15%			
	45-54歳	0%	0%	0%	0%	0%	0%	0%	0%	0%	8%	0%	0%	5%	2%			
	55歳以上	0%	0%	0%	0%	0%	0%	0%	0%	0%	0%	0%	0%	5%	1%			
	無回答	0%	0%	0%	0%	0%	0%	0%	0%	0%	0%	0%	14%	0%	1%			
居住地	茨城県	0%	0%	0%	0%	0%	0%	0%	0%	0%	0%	0%	0%	0%	0%			
	栃木県	0%	0%	0%	0%	0%	0%	0%	0%	0%	0%	0%	0%	0%	0%			
	群馬県	0%	0%	0%	0%	0%	0%	0%	0%	0%	0%	0%	0%	0%	0%			
	埼玉県	0%	0%	0%	0%	0%	0%	0%	0%	0%	0%	0%	0%	0%	0%			
	千葉県	0%	0%	0%	0%	0%	0%	6%	0%	0%	0%	0%	0%	5%	2%			
	東京都	0%	0%	0%	0%	11%	40%	22%	25%	20%	0%	10%	29%	9%	17%			
	神奈川県	0%	0%	0%	0%	89%	60%	72%	75%	80%	100%	90%	71%	86%	81%			

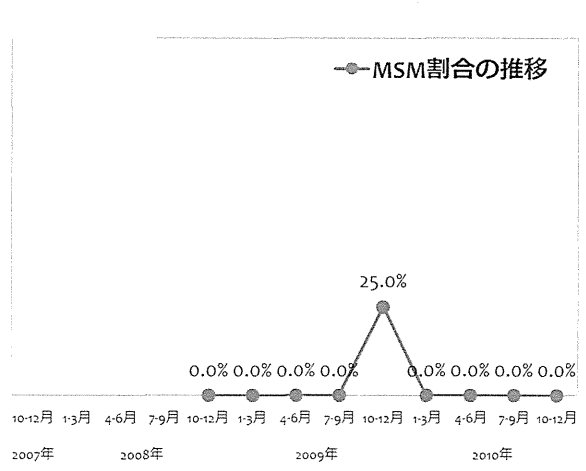
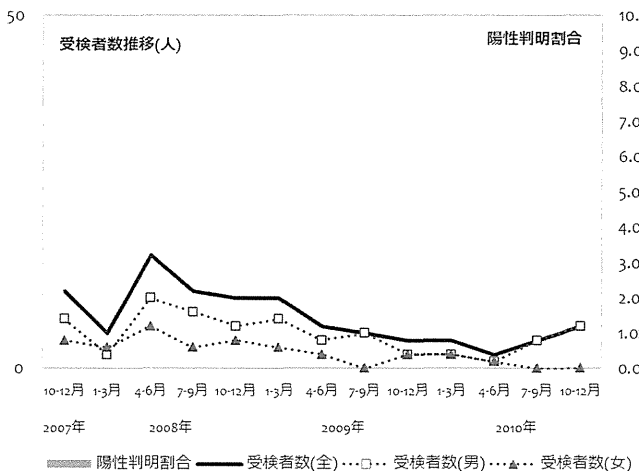
Men who have sex with men																		
	(年度)	2007				2008				2009				2010				合計
		(月)																
			1-3	4-6	7-9	10-12	1-3	4-6	7-9	10-12	1-3	4-6	7-9	10-12				
(計)	0	0	0	0	1	2	1	0	2	3	1	4	5	19				
年齢	24歳以下	0%	0%	0%	0%	0%	50%	0%	0%	0%	33%	100%	25%	20%	26%			
	25-34歳	0%	0%	0%	0%	100%	0%	0%	0%	100%	33%	0%	50%	20%	37%			
	35-44歳	0%	0%	0%	0%	0%	0%	0%	0%	0%	33%	0%	0%	40%	16%			
	45-54歳	0%	0%	0%	0%	0%	50%	100%	0%	0%	0%	0%	0%	20%	16%			
	55歳以上	0%	0%	0%	0%	0%	0%	0%	0%	0%	0%	0%	0%	0%	0%			
	無回答	0%	0%	0%	0%	0%	0%	0%	0%	0%	0%	0%	25%	0%	5%			
居住地	茨城県	0%	0%	0%	0%	0%	0%	0%	0%	0%	0%	0%	0%	0%	0%			
	栃木県	0%	0%	0%	0%	0%	0%	0%	0%	0%	0%	0%	0%	0%	0%			
	群馬県	0%	0%	0%	0%	0%	0%	0%	0%	0%	0%	0%	0%	0%	0%			
	埼玉県	0%	0%	0%	0%	0%	0%	0%	0%	0%	0%	0%	0%	0%	0%			
	千葉県	0%	0%	0%	0%	0%	0%	0%	0%	0%	0%	0%	0%	0%	0%			
	東京都	0%	0%	0%	0%	0%	0%	0%	0%	100%	33%	0%	25%	0%	21%			
	神奈川県	0%	0%	0%	0%	100%	100%	100%	0%	0%	67%	100%	75%	100%	79%			



	(年度)	2007				2008				2009				2010				合計
	(月)	1-3	4-6	7-9	10-12	1-3	4-6	7-9	10-12	1-3	4-6	7-9	10-12	1-3	4-6	7-9	10-12	
男性受検者数	7	2	10	8	6	7	4	5	2	2	1	4	6	64				
男性陽性者数	0	0	0	0	0	0	0	0	0	0	0	0	0	0				
女性受検者数	4	3	6	3	4	3	2	0	2	2	1	0	0	30				
女性陽性者数	0	0	0	0	0	0	0	0	0	0	0	0	0	0				
その他受検者数	0	0	0	0	0	0	0	0	0	0	0	0	0	0				
その他陽性者数	0	0	0	0	0	0	0	0	0	0	0	0	0	0				
受検者計	11	5	16	11	10	10	6	5	4	4	2	4	6	94				
陽性者計	0	0	0	0	0	0	0	0	0	0	0	0	0	0				
陽性判明割合(男)	0.00%	0.00%	0.00%	0.00%	0.00%	0.00%	0.00%	0.00%	0.00%	0.00%	0.00%	0.00%	0.00%	0.00%				
陽性判明割合(女)	0.00%	0.00%	0.00%	0.00%	0.00%	0.00%	0.00%	0.00%	0.00%	0.00%	0.00%	0.00%	0.00%	0.00%				
陽性判明割合(全)	0.00%	0.00%	0.00%	0.00%	0.00%	0.00%	0.00%	0.00%	0.00%	0.00%	0.00%	0.00%	0.00%	0.00%				

	(年度)	2007				2008				2009				2010				合計
	(月)	1-3	4-6	7-9	10-12	1-3	4-6	7-9	10-12	1-3	4-6	7-9	10-12	1-3	4-6	7-9	10-12	
回収数	0	0	0	0	2	9	4	5	4	4	2	4	6	40				
回収率	0.0%	0.0%	0.0%	0.0%	20.0%	90.0%	66.7%	100.0%	100.0%	100.0%	100.0%	100.0%	100.0%	100.0%				
分析対象者数	0	0	0	0	2	9	4	5	4	4	2	4	5	39				
有効回収率	0.0%	0.0%	0.0%	0.0%	20.0%	90.0%	66.7%	100.0%	100.0%	100.0%	100.0%	100.0%	83.3%					

	(年度)	2007				2008				2009				2010				合計
	(月)	1-3	4-6	7-9	10-12	1-3	4-6	7-9	10-12	1-3	4-6	7-9	10-12	1-3	4-6	7-9	10-12	
MSM除く男性(n)	0	0	0	0	2	6	3	5	1	2	1	4	5	29				
(%)	0.0%	0.0%	0.0%	0.0%	100.0%	66.7%	75.0%	100.0%	25.0%	50.0%	50.0%	100.0%	100.0%	74.4%				
女性(n)	0	0	0	0	0	3	1	0	2	2	1	0	0	9				
(%)	0.0%	0.0%	0.0%	0.0%	0.0%	33.3%	25.0%	0.0%	50.0%	50.0%	50.0%	0.0%	0.0%	23.1%				
その他(n)	0	0	0	0	0	0	0	0	0	0	0	0	0	0				
(%)	0.0%	0.0%	0.0%	0.0%	0.0%	0.0%	0.0%	0.0%	0.0%	0.0%	0.0%	0.0%	0.0%	0.0%				
MSM(n)	0	0	0	0	0	0	0	0	1	0	0	0	0	1				
(%)	0.0%	0.0%	0.0%	0.0%	0.0%	0.0%	0.0%	0.0%	25.0%	0.0%	0.0%	0.0%	0.0%	2.6%				



○ 性別および性指向別の基本属性 (年齢割合・居住地割合)

川崎市幸保健福祉センター

神奈川

MSM(Men who have sex with men)を除く男性														
(年度)	2007	2008				2009				2010				合計
(月)	1-3	4-6	7-9	10-12	1-3	4-6	7-9	10-12	1-3	4-6	7-9	10-12		
(計)	0	0	0	2	6	3	5	1	2	1	4	5		29
年齢	24歳以下	0%	0%	0%	0%	17%	33%	0%	0%	0%	100%	25%	0%	14%
	25-34歳	0%	0%	0%	100%	33%	33%	40%	0%	50%	0%	0%	40%	34%
	35-44歳	0%	0%	0%	0%	33%	33%	40%	100%	50%	0%	25%	20%	31%
	45-54歳	0%	0%	0%	0%	0%	0%	0%	0%	0%	0%	25%	20%	7%
	55歳以上	0%	0%	0%	0%	17%	0%	20%	0%	0%	0%	25%	20%	14%
	無回答	0%	0%	0%	0%	0%	0%	0%	0%	0%	0%	0%	0%	0%
居住地	茨城県	0%	0%	0%	0%	0%	0%	0%	0%	0%	0%	0%	0%	0%
	栃木県	0%	0%	0%	0%	0%	0%	0%	0%	0%	0%	0%	0%	0%
	群馬県	0%	0%	0%	0%	0%	0%	0%	0%	0%	0%	0%	0%	0%
	埼玉県	0%	0%	0%	0%	0%	0%	0%	0%	0%	0%	0%	0%	0%
	千葉県	0%	0%	0%	0%	0%	0%	0%	0%	0%	0%	0%	0%	0%
	東京都	0%	0%	0%	0%	0%	33%	0%	0%	0%	0%	0%	0%	3%
	神奈川県	0%	0%	0%	100%	100%	67%	100%	100%	100%	100%	100%	100%	97%

女性														
(年度)	2007	2008				2009				2010				合計
(月)	1-3	4-6	7-9	10-12	1-3	4-6	7-9	10-12	1-3	4-6	7-9	10-12		
(計)	0	0	0	0	3	1	0	2	2	1	0	0		9
年齢	24歳以下	0%	0%	0%	0%	67%	100%	0%	50%	0%	0%	0%	0%	44%
	25-34歳	0%	0%	0%	0%	0%	0%	0%	100%	0%	0%	0%	0%	22%
	35-44歳	0%	0%	0%	0%	0%	0%	0%	0%	100%	0%	0%	0%	11%
	45-54歳	0%	0%	0%	0%	0%	0%	0%	0%	0%	0%	0%	0%	0%
	55歳以上	0%	0%	0%	0%	33%	0%	0%	50%	0%	0%	0%	0%	22%
	無回答	0%	0%	0%	0%	0%	0%	0%	0%	0%	0%	0%	0%	0%
居住地	茨城県	0%	0%	0%	0%	0%	0%	0%	0%	0%	0%	0%	0%	0%
	栃木県	0%	0%	0%	0%	0%	0%	0%	0%	0%	0%	0%	0%	0%
	群馬県	0%	0%	0%	0%	0%	0%	0%	0%	0%	0%	0%	0%	0%
	埼玉県	0%	0%	0%	0%	0%	0%	0%	0%	0%	0%	0%	0%	0%
	千葉県	0%	0%	0%	0%	0%	0%	0%	0%	0%	0%	0%	0%	0%
	東京都	0%	0%	0%	0%	0%	0%	0%	0%	0%	0%	0%	0%	0%
	神奈川県	0%	0%	0%	0%	100%	100%	0%	100%	100%	100%	0%	0%	100%

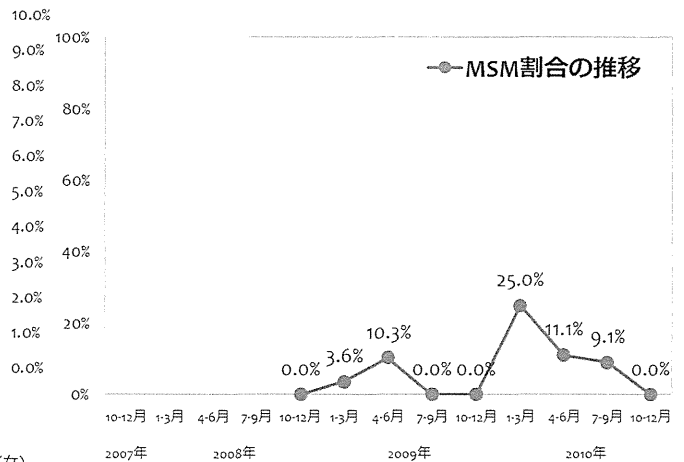
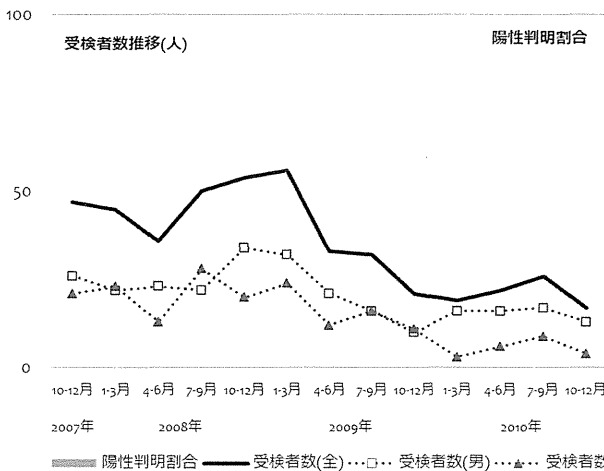
Men who have sex with men														
(年度)	2007	2008				2009				2010				合計
(月)	1-3	4-6	7-9	10-12	1-3	4-6	7-9	10-12	1-3	4-6	7-9	10-12		
(計)	0	0	0	0	0	0	0	1	0	0	0	0		1
年齢	24歳以下	0%	0%	0%	0%	0%	0%	0%	100%	0%	0%	0%	0%	100%
	25-34歳	0%	0%	0%	0%	0%	0%	0%	0%	0%	0%	0%	0%	0%
	35-44歳	0%	0%	0%	0%	0%	0%	0%	0%	0%	0%	0%	0%	0%
	45-54歳	0%	0%	0%	0%	0%	0%	0%	0%	0%	0%	0%	0%	0%
	55歳以上	0%	0%	0%	0%	0%	0%	0%	0%	0%	0%	0%	0%	0%
	無回答	0%	0%	0%	0%	0%	0%	0%	0%	0%	0%	0%	0%	0%
居住地	茨城県	0%	0%	0%	0%	0%	0%	0%	0%	0%	0%	0%	0%	0%
	栃木県	0%	0%	0%	0%	0%	0%	0%	0%	0%	0%	0%	0%	0%
	群馬県	0%	0%	0%	0%	0%	0%	0%	0%	0%	0%	0%	0%	0%
	埼玉県	0%	0%	0%	0%	0%	0%	0%	0%	0%	0%	0%	0%	0%
	千葉県	0%	0%	0%	0%	0%	0%	0%	0%	0%	0%	0%	0%	0%
	東京都	0%	0%	0%	0%	0%	0%	0%	0%	0%	0%	0%	0%	0%
	神奈川県	0%	0%	0%	0%	0%	0%	0%	100%	0%	0%	0%	0%	100%



	(年度)	2007				2008				2009				2010				合計
		(月)				1-3	4-6	7-9	10-12	1-3	4-6	7-9	10-12	1-3	4-6	7-9	10-12	
男性受検者数		26	22	23	22	34	32	21	16	10	16	16	17	13	268			
男性陽性者数		0	0	0	0	0	0	0	0	0	0	0	0	0	0			
女性受検者数		21	23	13	28	20	24	12	16	11	3	6	9	4	190			
女性陽性者数		0	0	0	0	0	0	0	0	0	0	0	0	0	0			
その他受検者数		0	0	0	0	0	0	0	0	0	0	0	0	0	0			
その他陽性者数		0	0	0	0	0	0	0	0	0	0	0	0	0	0			
受検者計		47	45	36	50	54	56	33	32	21	19	22	26	17	458			
陽性者計		0	0	0	0	0	0	0	0	0	0	0	0	0	0			
陽性判明割合(男)		0.00%	0.00%	0.00%	0.00%	0.00%	0.00%	0.00%	0.00%	0.00%	0.00%	0.00%	0.00%	0.00%	0.00%			
陽性判明割合(女)		0.00%	0.00%	0.00%	0.00%	0.00%	0.00%	0.00%	0.00%	0.00%	0.00%	0.00%	0.00%	0.00%	0.00%			
陽性判明割合(全)		0.00%	0.00%	0.00%	0.00%	0.00%	0.00%	0.00%	0.00%	0.00%	0.00%	0.00%	0.00%	0.00%	0.00%			

	(年度)	2007				2008				2009				2010				合計
		(月)				1-3	4-6	7-9	10-12	1-3	4-6	7-9	10-12	1-3	4-6	7-9	10-12	
回収数		0	0	0	0	25	56	30	32	21	13	19	23	14	233			
回収率		0.0%	0.0%	0.0%	0.0%	46.3%	100.0%	90.9%	100.0%	100.0%	68.4%	86.4%	88.5%	82.4%				
分析対象者数		0	0	0	0	24	55	29	32	20	12	18	22	14	226			
有効回収率		0.0%	0.0%	0.0%	0.0%	44.4%	98.2%	87.9%	100.0%	95.2%	63.2%	81.8%	84.6%	82.4%				

	(年度)	2007				2008				2009				2010				合計
		(月)				1-3	4-6	7-9	10-12	1-3	4-6	7-9	10-12	1-3	4-6	7-9	10-12	
MSM除く男性(n)		0	0	0	0	12	29	16	17	10	9	9	11	10	123			
(%)		0.0%	0.0%	0.0%	0.0%	50.0%	52.7%	55.2%	53.1%	50.0%	75.0%	50.0%	50.0%	71.4%	54.4%			
女性(n)		0	0	0	0	12	24	10	15	10	0	7	9	4	91			
(%)		0.0%	0.0%	0.0%	0.0%	50.0%	43.6%	34.5%	46.9%	50.0%	0.0%	38.9%	40.9%	28.6%	40.3%			
その他(n)		0	0	0	0	0	0	0	0	0	0	0	0	0	0			
(%)		0.0%	0.0%	0.0%	0.0%	0.0%	0.0%	0.0%	0.0%	0.0%	0.0%	0.0%	0.0%	0.0%	0.0%			
MSM(n)		0	0	0	0	0	2	3	0	0	3	2	2	0	12			
(%)		0.0%	0.0%	0.0%	0.0%	0.0%	3.6%	10.3%	0.0%	0.0%	25.0%	11.1%	9.1%	0.0%	5.3%			



○ 性別および性指向別の基本属性 (年齢割合・居住地割合)

川崎市高津保健福祉センター

神奈川

MSM(Men who have sex with men)を除く男性

	(年度)	2007				2008				2009				2010				合計
		(月)	1-3	4-6	7-9	10-12	1-3	4-6	7-9	10-12	1-3	4-6	7-9	10-12				
			(計)	0	0	0	12	29	16	17	10	9	9	11	10	123		
年齢	24歳以下	0%	0%	0%	0%	50%	28%	19%	29%	40%	44%	22%	0%	20%	28%			
	25-34歳	0%	0%	0%	0%	8%	31%	38%	41%	20%	11%	33%	45%	20%	29%			
	35-44歳	0%	0%	0%	0%	25%	21%	38%	18%	20%	22%	33%	18%	30%	24%			
	45-54歳	0%	0%	0%	0%	8%	14%	0%	6%	0%	11%	0%	18%	30%	10%			
	55歳以上	0%	0%	0%	0%	8%	7%	6%	6%	20%	11%	11%	18%	0%	9%			
	無回答	0%	0%	0%	0%	0%	0%	0%	0%	0%	0%	0%	0%	0%	0%			
居住地	茨城県	0%	0%	0%	0%	0%	0%	0%	0%	0%	0%	0%	0%	0%	0%			
	栃木県	0%	0%	0%	0%	0%	0%	0%	0%	0%	0%	0%	0%	0%	0%			
	群馬県	0%	0%	0%	0%	0%	0%	0%	0%	0%	0%	0%	0%	0%	0%			
	埼玉県	0%	0%	0%	0%	0%	0%	0%	0%	0%	0%	0%	0%	0%	0%			
	千葉県	0%	0%	0%	0%	0%	0%	0%	0%	0%	0%	0%	0%	0%	0%			
	東京都	0%	0%	0%	0%	17%	10%	19%	18%	10%	11%	33%	0%	10%	14%			
	神奈川県	0%	0%	0%	0%	83%	90%	81%	82%	90%	89%	67%	100%	90%	86%			

女性

	(年度)	2007				2008				2009				2010				合計
		(月)	1-3	4-6	7-9	10-12	1-3	4-6	7-9	10-12	1-3	4-6	7-9	10-12				
			(計)	0	0	0	12	24	10	15	10	0	7	9	4	91		
年齢	24歳以下	0%	0%	0%	0%	50%	38%	60%	53%	20%	0%	57%	44%	25%	44%			
	25-34歳	0%	0%	0%	0%	33%	29%	40%	40%	20%	0%	43%	56%	75%	37%			
	35-44歳	0%	0%	0%	0%	8%	29%	0%	7%	30%	0%	0%	0%	0%	13%			
	45-54歳	0%	0%	0%	0%	8%	0%	0%	0%	20%	0%	0%	0%	0%	3%			
	55歳以上	0%	0%	0%	0%	0%	0%	0%	0%	10%	0%	0%	0%	0%	1%			
	無回答	0%	0%	0%	0%	0%	4%	0%	0%	0%	0%	0%	0%	0%	1%			
居住地	茨城県	0%	0%	0%	0%	0%	0%	0%	0%	0%	0%	0%	0%	0%	0%			
	栃木県	0%	0%	0%	0%	0%	0%	0%	0%	0%	0%	0%	0%	0%	0%			
	群馬県	0%	0%	0%	0%	0%	0%	0%	0%	0%	0%	0%	0%	0%	0%			
	埼玉県	0%	0%	0%	0%	0%	4%	0%	7%	0%	0%	0%	0%	0%	2%			
	千葉県	0%	0%	0%	0%	0%	0%	0%	0%	0%	0%	0%	0%	0%	0%			
	東京都	0%	0%	0%	0%	8%	0%	0%	0%	0%	0%	0%	0%	0%	1%			
	神奈川県	0%	0%	0%	0%	92%	96%	100%	93%	100%	0%	100%	100%	100%	97%			

Men who have sex with men

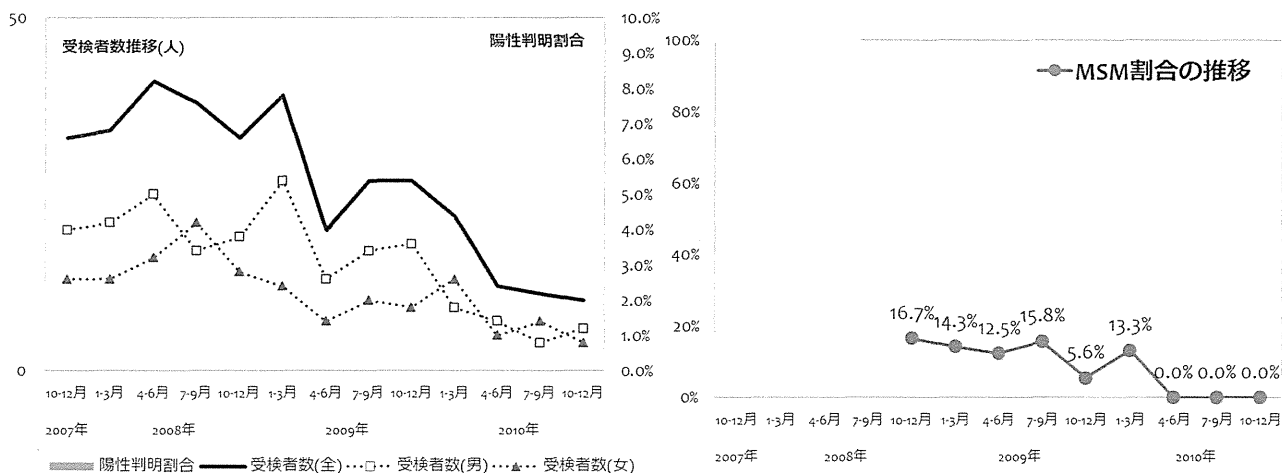
	(年度)	2007				2008				2009				2010				合計
		(月)	1-3	4-6	7-9	10-12	1-3	4-6	7-9	10-12	1-3	4-6	7-9	10-12				
			(計)	0	0	0	0	2	3	0	0	3	2	2	0	12		
年齢	24歳以下	0%	0%	0%	0%	0%	0%	33%	0%	0%	67%	100%	50%	0%	50%			
	25-34歳	0%	0%	0%	0%	0%	50%	67%	0%	0%	33%	0%	50%	0%	42%			
	35-44歳	0%	0%	0%	0%	0%	50%	0%	0%	0%	0%	0%	0%	0%	8%			
	45-54歳	0%	0%	0%	0%	0%	0%	0%	0%	0%	0%	0%	0%	0%	0%			
	55歳以上	0%	0%	0%	0%	0%	0%	0%	0%	0%	0%	0%	0%	0%	0%			
	無回答	0%	0%	0%	0%	0%	0%	0%	0%	0%	0%	0%	0%	0%	0%			
居住地	茨城県	0%	0%	0%	0%	0%	0%	0%	0%	0%	0%	0%	0%	0%	0%			
	栃木県	0%	0%	0%	0%	0%	0%	0%	0%	0%	0%	0%	0%	0%	0%			
	群馬県	0%	0%	0%	0%	0%	0%	0%	0%	0%	0%	0%	0%	0%	0%			
	埼玉県	0%	0%	0%	0%	0%	0%	0%	0%	0%	0%	0%	0%	0%	0%			
	千葉県	0%	0%	0%	0%	0%	0%	0%	0%	0%	0%	0%	0%	0%	0%			
	東京都	0%	0%	0%	0%	0%	0%	0%	0%	0%	0%	0%	0%	0%	0%			
	神奈川県	0%	0%	0%	0%	100%	100%	0%	0%	100%	100%	100%	100%	0%	100%			



	(年度)	2007				2008				2009				2010				合計
	(月)	1-3	4-6	7-9	10-12	1-3	4-6	7-9	10-12	1-3	4-6	7-9	10-12	1-3	4-6	7-9	10-12	
男性受検者数	20	21	25	17	19	27	13	17	18	9	7	4	6	203				
男性陽性者数	0	0	0	0	0	0	0	0	0	0	0	0	0	0				
女性受検者数	13	13	16	21	14	12	7	10	9	13	5	7	4	144				
女性陽性者数	0	0	0	0	0	0	0	0	0	0	0	0	0	0				
その他受検者数	0	0	0	0	0	0	0	0	0	0	0	0	0	0				
その他陽性者数	0	0	0	0	0	0	0	0	0	0	0	0	0	0				
受検者計	33	34	41	38	33	39	20	27	27	22	12	11	10	347				
陽性者計	0	0	0	0	0	0	0	0	0	0	0	0	0	0				
陽性判明割合(男)	0.00%	0.00%	0.00%	0.00%	0.00%	0.00%	0.00%	0.00%	0.00%	0.00%	0.00%	0.00%	0.00%	0.00%				
陽性判明割合(女)	0.00%	0.00%	0.00%	0.00%	0.00%	0.00%	0.00%	0.00%	0.00%	0.00%	0.00%	0.00%	0.00%	0.00%				
陽性判明割合(全)	0.00%	0.00%	0.00%	0.00%	0.00%	0.00%	0.00%	0.00%	0.00%	0.00%	0.00%	0.00%	0.00%	0.00%				

	(年度)	2007				2008				2009				2010				合計
	(月)	1-3	4-6	7-9	10-12	1-3	4-6	7-9	10-12	1-3	4-6	7-9	10-12	1-3	4-6	7-9	10-12	
回収数	0	0	0	0	6	22	17	20	20	17	11	10	10	133				
回収率	0.0%	0.0%	0.0%	0.0%	18.2%	56.4%	85.0%	74.1%	74.1%	77.3%	91.7%	90.9%	100.0%					
分析対象者数	0	0	0	0	6	21	16	19	18	15	10	9	10	124				
有効回収率	0.0%	0.0%	0.0%	0.0%	18.2%	53.8%	80.0%	70.4%	66.7%	68.2%	83.3%	81.8%	100.0%					

	(年度)	2007				2008				2009				2010				合計
	(月)	1-3	4-6	7-9	10-12	1-3	4-6	7-9	10-12	1-3	4-6	7-9	10-12	1-3	4-6	7-9	10-12	
MSM除く男性(n)	0	0	0	0	3	13	10	8	9	4	6	3	6	62				
(%)	0.0%	0.0%	0.0%	0.0%	50.0%	61.9%	62.5%	42.1%	50.0%	26.7%	60.0%	33.3%	60.0%	50.0%				
女性(n)	0	0	0	0	2	5	4	8	8	9	4	6	4	50				
(%)	0.0%	0.0%	0.0%	0.0%	33.3%	23.8%	25.0%	42.1%	44.4%	60.0%	40.0%	66.7%	40.0%	40.3%				
その他(n)	0	0	0	0	0	0	0	0	0	0	0	0	0	0				
(%)	0.0%	0.0%	0.0%	0.0%	0.0%	0.0%	0.0%	0.0%	0.0%	0.0%	0.0%	0.0%	0.0%	0.0%				
MSM(n)	0	0	0	0	1	3	2	3	1	2	0	0	0	12				
(%)	0.0%	0.0%	0.0%	0.0%	16.7%	14.3%	12.5%	15.8%	5.6%	13.3%	0.0%	0.0%	0.0%	9.7%				



○ 性別および性指向別の基本属性（年齢割合・居住地割合）

川崎市多摩保健福祉センター

神奈川

MSM(Men who have sex with men)を除く男性																		
	(年度)	2007				2008				2009				2010				合計
		(月)	1-3	4-6	7-9	10-12	1-3	4-6	7-9	10-12	1-3	4-6	7-9	10-12				
			(計)	0	0	0	3	13	10	8	9	4	6	3	6			
年齢	24歳以下	0%	0%	0%	0%	67%	46%	10%	13%	33%	0%	33%	0%	33%	27%			
	25-34歳	0%	0%	0%	0%	0%	31%	70%	63%	22%	50%	33%	100%	67%	47%			
	35-44歳	0%	0%	0%	0%	0%	15%	0%	0%	33%	25%	33%	0%	0%	13%			
	45-54歳	0%	0%	0%	0%	0%	8%	20%	25%	0%	0%	0%	0%	0%	8%			
	55歳以上	0%	0%	0%	0%	33%	0%	0%	0%	11%	25%	0%	0%	0%	5%			
	無回答	0%	0%	0%	0%	0%	0%	0%	0%	0%	0%	0%	0%	0%	0%			
居住地	茨城県	0%	0%	0%	0%	0%	0%	0%	0%	0%	0%	0%	0%	0%	0%			
	栃木県	0%	0%	0%	0%	0%	0%	0%	0%	0%	0%	0%	0%	0%	0%			
	群馬県	0%	0%	0%	0%	0%	0%	0%	0%	0%	0%	0%	0%	0%	0%			
	埼玉県	0%	0%	0%	0%	0%	0%	0%	0%	0%	0%	0%	0%	0%	0%			
	千葉県	0%	0%	0%	0%	0%	0%	0%	0%	0%	0%	0%	0%	0%	0%			
	東京都	0%	0%	0%	0%	0%	15%	0%	0%	11%	0%	0%	0%	17%	6%			
	神奈川県	0%	0%	0%	0%	100%	85%	100%	100%	89%	100%	100%	100%	83%	94%			

女性																		
	(年度)	2007				2008				2009				2010				合計
		(月)	1-3	4-6	7-9	10-12	1-3	4-6	7-9	10-12	1-3	4-6	7-9	10-12				
			(計)	0	0	0	2	5	4	8	8	9	4	6	4			
年齢	24歳以下	0%	0%	0%	0%	0%	60%	50%	25%	13%	33%	0%	33%	75%	32%			
	25-34歳	0%	0%	0%	0%	100%	20%	50%	50%	63%	56%	75%	67%	25%	54%			
	35-44歳	0%	0%	0%	0%	0%	20%	0%	25%	25%	11%	25%	0%	0%	14%			
	45-54歳	0%	0%	0%	0%	0%	0%	0%	0%	0%	0%	0%	0%	0%	0%			
	55歳以上	0%	0%	0%	0%	0%	0%	0%	0%	0%	0%	0%	0%	0%	0%			
	無回答	0%	0%	0%	0%	0%	0%	0%	0%	0%	0%	0%	0%	0%	0%			
居住地	茨城県	0%	0%	0%	0%	0%	0%	0%	0%	0%	0%	0%	0%	0%	0%			
	栃木県	0%	0%	0%	0%	0%	0%	0%	0%	0%	0%	0%	0%	0%	0%			
	群馬県	0%	0%	0%	0%	0%	0%	0%	0%	0%	0%	0%	0%	0%	0%			
	埼玉県	0%	0%	0%	0%	0%	0%	0%	0%	0%	0%	0%	0%	0%	0%			
	千葉県	0%	0%	0%	0%	0%	0%	0%	0%	0%	0%	0%	0%	0%	0%			
	東京都	0%	0%	0%	0%	0%	0%	25%	0%	25%	0%	0%	0%	25%	8%			
	神奈川県	0%	0%	0%	0%	100%	100%	75%	100%	75%	100%	100%	100%	75%	92%			

Men who have sex with men																		
	(年度)	2007				2008				2009				2010				合計
		(月)	1-3	4-6	7-9	10-12	1-3	4-6	7-9	10-12	1-3	4-6	7-9	10-12				
			(計)	0	0	0	1	3	2	3	1	2	0	0	0			
年齢	24歳以下	0%	0%	0%	0%	100%	0%	50%	33%	0%	0%	0%	0%	0%	25%			
	25-34歳	0%	0%	0%	0%	0%	67%	50%	33%	100%	0%	0%	0%	0%	42%			
	35-44歳	0%	0%	0%	0%	0%	33%	0%	33%	0%	0%	0%	0%	0%	17%			
	45-54歳	0%	0%	0%	0%	0%	0%	0%	0%	0%	50%	0%	0%	0%	8%			
	55歳以上	0%	0%	0%	0%	0%	0%	0%	0%	0%	50%	0%	0%	0%	8%			
	無回答	0%	0%	0%	0%	0%	0%	0%	0%	0%	0%	0%	0%	0%	0%			
居住地	茨城県	0%	0%	0%	0%	0%	0%	0%	0%	0%	0%	0%	0%	0%	0%			
	栃木県	0%	0%	0%	0%	0%	0%	0%	0%	0%	0%	0%	0%	0%	0%			
	群馬県	0%	0%	0%	0%	0%	0%	0%	0%	0%	0%	0%	0%	0%	0%			
	埼玉県	0%	0%	0%	0%	0%	0%	0%	0%	0%	0%	0%	0%	0%	0%			
	千葉県	0%	0%	0%	0%	0%	0%	0%	0%	0%	0%	0%	0%	0%	0%			
	東京都	0%	0%	0%	0%	0%	0%	50%	0%	0%	0%	0%	0%	0%	8%			
	神奈川県	0%	0%	0%	0%	100%	100%	50%	100%	100%	100%	0%	0%	0%	92%			