

○ 性別および性指向別の基本属性 (年齢割合・居住地割合)

渋谷区保健所

東京

MSM(Men who have sex with men)を除く男性																		
	(年度)	2007				2008				2009				2010				合計
		(月)				(月)				(月)				(月)				
		1-3	4-6	7-9	10-12	1-3	4-6	7-9	10-12	1-3	4-6	7-9	10-12	1-3	4-6	7-9	10-12	
	(計)	37	17	29	33	29	39	36	25	14	22	14	16	17	328			
年齢	24歳以下	5%	12%	3%	9%	24%	18%	25%	16%	29%	36%	7%	6%	24%	16%			
	25-34歳	35%	65%	38%	39%	52%	31%	33%	52%	14%	32%	36%	38%	35%	38%			
	35-44歳	27%	12%	24%	45%	17%	38%	33%	28%	50%	23%	36%	31%	29%	30%			
	45-54歳	16%	6%	14%	6%	3%	3%	6%	4%	7%	5%	14%	13%	12%	8%			
	55歳以上	14%	6%	21%	0%	3%	8%	3%	0%	0%	0%	7%	6%	0%	6%			
	無回答	3%	0%	0%	0%	0%	3%	0%	0%	0%	5%	0%	6%	0%	1%			
居住地	茨城県	0%	0%	0%	0%	3%	0%	0%	0%	0%	0%	0%	0%	0%	0%			
	栃木県	0%	0%	0%	0%	0%	0%	0%	0%	0%	0%	0%	0%	0%	0%			
	群馬県	0%	0%	0%	0%	0%	0%	0%	0%	0%	0%	0%	0%	0%	0%			
	埼玉県	5%	0%	10%	3%	0%	8%	3%	8%	0%	0%	7%	13%	0%	5%			
	千葉県	3%	6%	3%	0%	0%	3%	3%	8%	7%	5%	0%	0%	6%	3%			
	東京都	86%	82%	72%	82%	86%	74%	81%	68%	79%	91%	93%	81%	82%	81%			
	神奈川県	5%	12%	14%	15%	10%	15%	14%	16%	14%	5%	0%	6%	12%	11%			

女性																		
	(年度)	2007				2008				2009				2010				合計
		(月)				(月)				(月)				(月)				
		1-3	4-6	7-9	10-12	1-3	4-6	7-9	10-12	1-3	4-6	7-9	10-12	1-3	4-6	7-9	10-12	
	(計)	36	24	48	41	50	47	59	32	23	24	32	19	26	461			
年齢	24歳以下	28%	29%	38%	29%	34%	40%	34%	25%	22%	46%	19%	47%	38%	33%			
	25-34歳	50%	50%	40%	41%	50%	36%	47%	63%	39%	50%	59%	32%	38%	46%			
	35-44歳	19%	17%	15%	24%	10%	19%	12%	13%	22%	4%	19%	16%	19%	16%			
	45-54歳	0%	4%	8%	2%	2%	2%	0%	0%	9%	0%	0%	0%	0%	2%			
	55歳以上	3%	0%	0%	2%	0%	2%	5%	0%	9%	0%	3%	5%	0%	2%			
	無回答	0%	0%	0%	0%	4%	0%	2%	0%	0%	0%	0%	0%	4%	1%			
居住地	茨城県	3%	0%	0%	0%	0%	0%	0%	0%	0%	0%	0%	0%	0%	0%			
	栃木県	0%	0%	0%	0%	0%	0%	0%	0%	0%	0%	0%	0%	0%	0%			
	群馬県	0%	0%	0%	0%	0%	0%	0%	0%	0%	0%	0%	0%	4%	0%			
	埼玉県	0%	4%	4%	10%	8%	6%	3%	6%	0%	4%	3%	0%	4%	5%			
	千葉県	3%	4%	4%	0%	2%	4%	2%	0%	0%	4%	0%	0%	0%	2%			
	東京都	89%	79%	77%	85%	78%	79%	88%	81%	96%	83%	91%	95%	92%	85%			
	神奈川県	6%	13%	15%	5%	12%	11%	7%	13%	4%	8%	6%	5%	0%	8%			

Men who have sex with men																		
	(年度)	2007				2008				2009				2010				合計
		(月)				(月)				(月)				(月)				
		1-3	4-6	7-9	10-12	1-3	4-6	7-9	10-12	1-3	4-6	7-9	10-12	1-3	4-6	7-9	10-12	
	(計)	4	5	7	12	10	5	7	8	6	6	4	4	3	81			
年齢	24歳以下	50%	20%	14%	25%	30%	0%	29%	63%	67%	67%	0%	0%	67%	33%			
	25-34歳	0%	60%	43%	42%	40%	80%	57%	13%	17%	17%	75%	75%	33%	41%			
	35-44歳	50%	0%	43%	17%	30%	20%	14%	25%	17%	17%	25%	25%	0%	22%			
	45-54歳	0%	0%	0%	17%	0%	0%	0%	0%	0%	0%	0%	0%	0%	2%			
	55歳以上	0%	20%	0%	0%	0%	0%	0%	0%	0%	0%	0%	0%	0%	1%			
	無回答	0%	0%	0%	0%	0%	0%	0%	0%	0%	0%	0%	0%	0%	0%			
居住地	茨城県	25%	0%	0%	0%	0%	0%	0%	0%	17%	17%	0%	0%	0%	4%			
	栃木県	0%	0%	0%	0%	0%	0%	0%	0%	0%	0%	0%	0%	0%	0%			
	群馬県	0%	0%	0%	0%	0%	0%	0%	0%	0%	0%	0%	0%	0%	0%			
	埼玉県	0%	0%	0%	8%	10%	0%	0%	0%	0%	17%	0%	0%	0%	4%			
	千葉県	0%	0%	0%	0%	10%	0%	0%	0%	0%	0%	0%	0%	0%	1%			
	東京都	75%	60%	86%	75%	60%	100%	71%	63%	50%	50%	100%	100%	100%	73%			
	神奈川県	0%	40%	14%	17%	20%	0%	29%	38%	33%	17%	0%	0%	0%	19%			

首都圏(保健所) 新宿区保健所

表 I

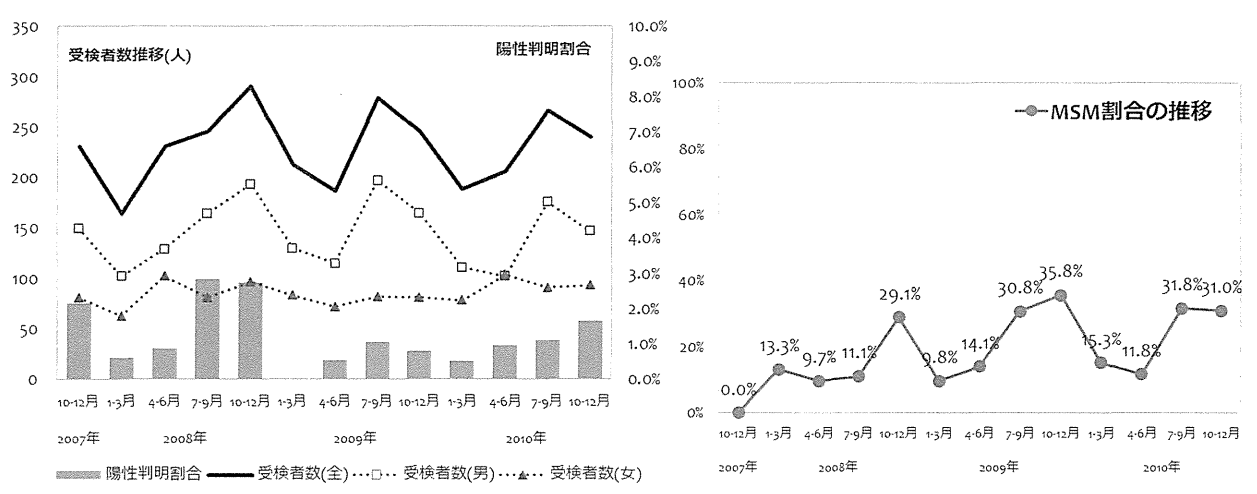
	2007				2008				2009				2010				合計	
	(年度)	(月)				(月)				(月)				(月)				
		1-3	4-6	7-9	10-12	1-3	4-6	7-9	10-12	1-3	4-6	7-9	10-12	1-3	4-6	7-9	10-12	
男性受検者数	150	102	129	165	194	130	115	197	165	111	102	176	147	1883				
男性陽性者数	5	1	1	7	8	0	1	3	2	1	1	3	3	36				
女性受検者数	81	63	102	81	97	83	72	82	81	78	104	91	93	1108				
女性陽性者数	0	0	1	0	0	0	0	0	0	0	1	0	1	3				
その他受検者数	0	0	0	0	0	0	0	0	0	0	0	0	0	0				
その他陽性者数	0	0	0	0	0	0	0	0	0	0	0	0	0	0				
受検者計	231	165	231	246	291	213	187	279	246	189	206	267	240	2991				
陽性者計	5	1	2	7	8	0	1	3	2	1	2	3	4	39				
陽性判明割合(男)	3.33%	0.98%	0.78%	4.24%	4.12%	0.00%	0.87%	1.52%	1.21%	0.90%	0.98%	1.70%	2.04%	1.91%				
陽性判明割合(女)	0.00%	0.00%	0.98%	0.00%	0.00%	0.00%	0.00%	0.00%	0.00%	0.00%	0.96%	0.00%	1.08%	0.27%				
陽性判明割合(全)	2.16%	0.61%	0.87%	2.85%	2.75%	0.00%	0.53%	1.08%	0.81%	0.53%	0.97%	1.12%	1.67%	1.30%				

表 II

	2007				2008				2009				2010				合計	
	(年度)	(月)				(月)				(月)				(月)				
		1-3	4-6	7-9	10-12	1-3	4-6	7-9	10-12	1-3	4-6	7-9	10-12	1-3	4-6	7-9	10-12	
回収数	0	120	155	149	235	139	67	171	185	153	174	215	181	1944				
回収率	0.0%	72.7%	67.1%	60.6%	80.8%	65.3%	35.8%	61.3%	75.2%	81.0%	84.5%	80.5%	75.4%					
分析対象者数	0	113	144	144	227	133	64	159	179	144	170	211	174	1862				
有効回収率	0.0%	68.5%	62.3%	58.5%	78.0%	62.4%	34.2%	57.0%	72.8%	76.2%	82.5%	79.0%	72.5%					

表 III

	2007				2008				2009				2010				合計	
	(年度)	(月)				(月)				(月)				(月)				
		1-3	4-6	7-9	10-12	1-3	4-6	7-9	10-12	1-3	4-6	7-9	10-12	1-3	4-6	7-9	10-12	
MSM除く男性(n)	0	51	62	68	86	60	29	62	60	59	56	64	50	707				
(%)	0.0%	45.1%	43.1%	47.2%	37.9%	45.1%	45.3%	39.0%	33.5%	41.0%	32.9%	30.3%	28.7%	38.0%				
女性(n)	0	47	68	60	75	60	26	46	55	63	94	80	70	744				
(%)	0.0%	41.6%	47.2%	41.7%	33.0%	45.1%	40.6%	28.9%	30.7%	43.8%	55.3%	37.9%	40.2%	40.0%				
その他(n)	0	0	0	0	0	0	0	2	0	0	0	0	0	2				
(%)	0.0%	0.0%	0.0%	0.0%	0.0%	0.0%	0.0%	1.3%	0.0%	0.0%	0.0%	0.0%	0.0%	0.1%				
MSM(n)	0	15	14	16	66	13	9	49	64	22	20	67	54	409				
(%)	0.0%	13.3%	9.7%	11.1%	29.1%	9.8%	14.1%	30.8%	35.8%	15.3%	11.8%	31.8%	31.0%	22.0%				



○ 性別および性指向別の基本属性 (年齢割合・居住地割合)

新宿区保健所

東京

MSM(Men who have sex with men)を除く男性															
(年度)	2007	2008				2009				2010				合計	
(月)	1-3	4-6	7-9	10-12	1-3	4-6	7-9	10-12	1-3	4-6	7-9	10-12			
(計)	0	51	62	68	86	60	29	62	60	59	56	64	50	707	
年齢	24歳以下	0%	16%	3%	12%	20%	22%	14%	16%	18%	27%	13%	14%	18%	16%
	25-34歳	0%	41%	50%	41%	40%	30%	34%	39%	28%	36%	43%	39%	46%	39%
	35-44歳	0%	22%	21%	21%	17%	23%	21%	29%	35%	20%	30%	25%	18%	23%
	45-54歳	0%	10%	23%	16%	13%	12%	21%	11%	13%	8%	9%	9%	12%	13%
	55歳以上	0%	10%	3%	10%	8%	13%	10%	5%	5%	8%	5%	13%	6%	8%
	無回答	0%	2%	0%	0%	2%	0%	0%	0%	0%	0%	0%	0%	0%	0%
居住地	茨城県	0%	0%	0%	0%	0%	2%	0%	0%	0%	0%	0%	0%	2%	0%
	栃木県	0%	0%	0%	0%	1%	0%	0%	0%	0%	0%	0%	0%	0%	0%
	群馬県	0%	0%	0%	0%	0%	0%	0%	0%	0%	0%	0%	0%	0%	0%
	埼玉県	0%	4%	10%	6%	3%	20%	3%	10%	7%	8%	7%	6%	10%	8%
	千葉県	0%	4%	2%	7%	1%	2%	0%	3%	2%	7%	7%	3%	0%	3%
	東京都	0%	88%	85%	82%	81%	72%	93%	82%	80%	76%	80%	88%	88%	82%
	神奈川県	0%	4%	3%	4%	13%	5%	3%	5%	12%	8%	5%	3%	0%	6%

女性															
(年度)	2007	2008				2009				2010				合計	
(月)	1-3	4-6	7-9	10-12	1-3	4-6	7-9	10-12	1-3	4-6	7-9	10-12			
(計)	0	47	68	60	75	60	26	46	55	63	94	80	70	744	
年齢	24歳以下	0%	30%	35%	45%	53%	30%	35%	39%	29%	48%	36%	49%	49%	41%
	25-34歳	0%	51%	53%	43%	39%	50%	31%	48%	51%	44%	41%	43%	41%	45%
	35-44歳	0%	15%	12%	10%	8%	17%	31%	9%	15%	3%	18%	6%	9%	12%
	45-54歳	0%	4%	0%	2%	0%	2%	0%	2%	4%	2%	3%	3%	0%	2%
	55歳以上	0%	0%	0%	0%	0%	2%	4%	2%	2%	0%	1%	0%	1%	1%
	無回答	0%	0%	0%	0%	0%	0%	0%	0%	0%	3%	0%	0%	0%	0%
居住地	茨城県	0%	0%	1%	0%	1%	0%	0%	0%	2%	2%	0%	0%	0%	1%
	栃木県	0%	0%	0%	0%	0%	2%	0%	0%	0%	0%	0%	0%	1%	0%
	群馬県	0%	0%	0%	0%	0%	0%	0%	0%	0%	0%	0%	0%	0%	0%
	埼玉県	0%	15%	4%	5%	12%	3%	0%	9%	4%	8%	6%	10%	3%	7%
	千葉県	0%	4%	3%	5%	1%	3%	0%	4%	4%	5%	2%	1%	6%	3%
	東京都	0%	77%	82%	83%	80%	88%	96%	80%	91%	79%	88%	83%	80%	84%
	神奈川県	0%	4%	9%	7%	5%	3%	4%	7%	0%	6%	3%	6%	10%	6%

Men who have sex with men															
(年度)	2007	2008				2009				2010				合計	
(月)	1-3	4-6	7-9	10-12	1-3	4-6	7-9	10-12	1-3	4-6	7-9	10-12			
(計)	0	15	14	16	66	13	9	49	64	22	20	67	54	409	
年齢	24歳以下	0%	13%	43%	25%	9%	23%	11%	12%	22%	27%	20%	24%	13%	18%
	25-34歳	0%	47%	29%	38%	42%	31%	33%	47%	33%	36%	40%	36%	44%	39%
	35-44歳	0%	13%	21%	25%	44%	38%	44%	33%	36%	14%	25%	34%	26%	32%
	45-54歳	0%	7%	0%	0%	3%	0%	0%	4%	5%	18%	10%	4%	11%	6%
	55歳以上	0%	20%	7%	13%	2%	0%	11%	4%	3%	5%	5%	1%	6%	4%
	無回答	0%	0%	0%	0%	0%	8%	0%	0%	2%	0%	0%	0%	0%	0%
居住地	茨城県	0%	0%	0%	0%	0%	0%	0%	0%	0%	0%	0%	1%	4%	1%
	栃木県	0%	0%	0%	0%	0%	0%	0%	0%	0%	0%	0%	0%	0%	0%
	群馬県	0%	0%	0%	0%	0%	0%	0%	0%	0%	0%	0%	0%	0%	0%
	埼玉県	0%	13%	7%	0%	9%	0%	0%	4%	5%	27%	10%	6%	7%	7%
	千葉県	0%	0%	0%	6%	2%	8%	0%	2%	3%	9%	5%	3%	4%	3%
	東京都	0%	80%	93%	81%	82%	77%	100%	88%	84%	64%	70%	82%	80%	82%
	神奈川県	0%	7%	0%	13%	8%	15%	0%	6%	8%	0%	15%	7%	6%	7%

首都圏(保健所)

東京都多摩小平保健所

表Ⅰ

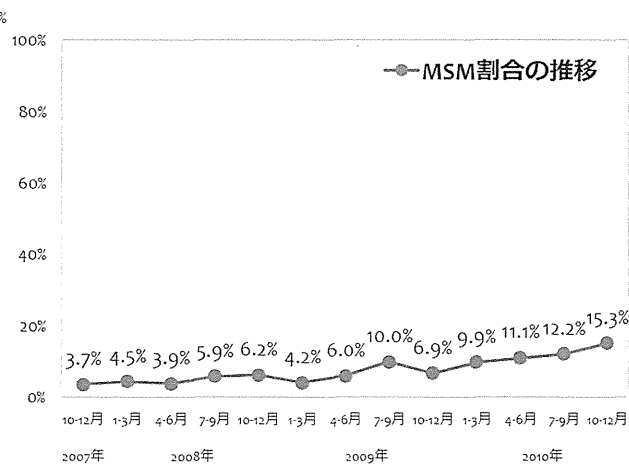
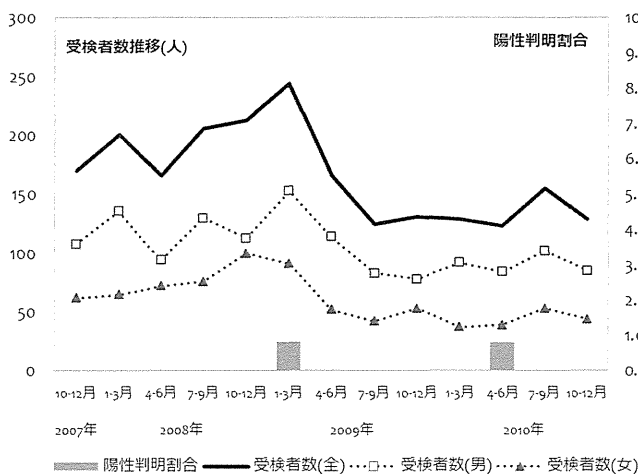
	2007				2008				2009				2010				合計	
	(年度)	(月)				(月)				(月)				(月)				
		1-3	4-6	7-9	10-12	1-3	4-6	7-9	10-12	1-3	4-6	7-9	10-12	1-3	4-6	7-9	10-12	
男性受検者数	108	136	94	130	113	153	114	83	78	92	84	102	85	1372				
男性陽性者数	0	0	0	0	0	1	0	0	0	0	1	0	0	2				
女性受検者数	62	65	72	76	100	91	52	42	53	37	39	53	44	786				
女性陽性者数	0	0	0	0	0	1	0	0	0	0	0	0	0	1				
その他受検者数	0	0	0	0	0	0	0	0	0	0	0	0	0	0				
その他陽性者数	0	0	0	0	0	0	0	0	0	0	0	0	0	0				
受検者計	170	201	166	206	213	244	166	125	131	129	123	155	129	2158				
陽性者計	0	0	0	0	0	2	0	0	0	0	1	0	0	3				
陽性判明割合(男)	0.00%	0.00%	0.00%	0.00%	0.00%	0.65%	0.00%	0.00%	0.00%	0.00%	1.19%	0.00%	0.00%	0.15%				
陽性判明割合(女)	0.00%	0.00%	0.00%	0.00%	0.00%	1.10%	0.00%	0.00%	0.00%	0.00%	0.00%	0.00%	0.00%	0.13%				
陽性判明割合(全)	0.00%	0.00%	0.00%	0.00%	0.00%	0.82%	0.00%	0.00%	0.00%	0.00%	0.81%	0.00%	0.00%	0.14%				

表Ⅱ

	2007				2008				2009				2010				合計	
	(年度)	(月)				(月)				(月)				(月)				
		1-3	4-6	7-9	10-12	1-3	4-6	7-9	10-12	1-3	4-6	7-9	10-12	1-3	4-6	7-9	10-12	
回収数	137	187	132	194	149	235	155	115	115	113	111	148	114	1905				
回収率	80.6%	93.0%	79.5%	94.2%	70.0%	96.3%	93.4%	92.0%	87.8%	87.6%	90.2%	95.5%	88.4%					
分析対象者数	134	177	128	186	145	216	150	110	102	111	99	139	111	1808				
有効回収率	78.8%	88.1%	77.1%	90.3%	68.1%	88.5%	90.4%	88.0%	77.9%	86.0%	80.5%	89.7%	86.0%					

表Ⅲ

	2007				2008				2009				2010				合計	
	(年度)	(月)				(月)				(月)				(月)				
		1-3	4-6	7-9	10-12	1-3	4-6	7-9	10-12	1-3	4-6	7-9	10-12	1-3	4-6	7-9	10-12	
MSM除く男性(n)	75	111	65	105	71	124	95	62	48	65	55	77	56	1009				
(%)	56.0%	62.7%	50.8%	56.5%	49.0%	57.4%	63.3%	56.4%	47.1%	58.6%	55.6%	55.4%	50.5%	55.8%				
女性(n)	52	58	58	70	65	83	46	37	47	35	33	45	38	667				
(%)	38.8%	32.8%	45.3%	37.6%	44.8%	38.4%	30.7%	33.6%	46.1%	31.5%	33.3%	32.4%	34.2%	36.9%				
その他(n)	2	0	0	0	0	0	0	0	0	0	0	0	0	2				
(%)	1.5%	0.0%	0.0%	0.0%	0.0%	0.0%	0.0%	0.0%	0.0%	0.0%	0.0%	0.0%	0.0%	0.1%				
MSM(n)	5	8	5	11	9	9	9	11	7	11	11	17	17	130				
(%)	3.7%	4.5%	3.9%	5.9%	6.2%	4.2%	6.0%	10.0%	6.9%	9.9%	11.1%	12.2%	15.3%	7.2%				



○ 性別および性指向別の基本属性 (年齢割合・居住地割合)

東京都多摩小平保健所

東京

MSM(Men who have sex with men)を除く男性															
(年度)	2007	2008				2009				2010				合計	
(月)	1-3	4-6	7-9	10-12	1-3	4-6	7-9	10-12	1-3	4-6	7-9	10-12	合計		
(計)	75	111	65	105	71	124	95	62	48	65	55	77	56	1009	
年齢	24歳以下	24%	25%	9%	16%	20%	23%	20%	19%	19%	26%	13%	19%	23%	20%
	25-34歳	29%	46%	45%	35%	44%	26%	41%	42%	46%	31%	40%	40%	34%	38%
	35-44歳	31%	18%	29%	29%	32%	32%	26%	24%	25%	31%	29%	23%	23%	27%
	45-54歳	9%	5%	9%	12%	1%	7%	4%	11%	10%	5%	4%	13%	14%	8%
	55歳以上	5%	5%	8%	7%	3%	11%	8%	3%	0%	6%	15%	4%	5%	7%
	無回答	1%	0%	0%	1%	0%	0%	0%	0%	0%	2%	0%	0%	0%	0%
居住地	茨城県	0%	0%	0%	0%	0%	0%	0%	0%	0%	0%	0%	0%	0%	0%
	栃木県	0%	0%	0%	0%	0%	0%	0%	0%	0%	0%	0%	0%	0%	0%
	群馬県	0%	0%	0%	0%	0%	0%	0%	0%	0%	0%	0%	0%	0%	0%
	埼玉県	11%	7%	6%	10%	4%	10%	6%	6%	4%	6%	4%	3%	13%	7%
	千葉県	0%	1%	0%	1%	1%	1%	1%	0%	6%	0%	2%	0%	0%	1%
	東京都	87%	92%	92%	85%	92%	89%	93%	90%	88%	91%	95%	97%	88%	90%
	神奈川県	3%	0%	2%	5%	3%	0%	0%	3%	2%	3%	0%	0%	0%	1%

女性															
(年度)	2007	2008				2009				2010				合計	
(月)	1-3	4-6	7-9	10-12	1-3	4-6	7-9	10-12	1-3	4-6	7-9	10-12	合計		
(計)	52	58	58	70	65	83	46	37	47	35	33	45	38	667	
年齢	24歳以下	52%	48%	43%	47%	49%	40%	46%	54%	53%	29%	36%	42%	29%	44%
	25-34歳	29%	31%	43%	29%	34%	42%	35%	35%	26%	57%	36%	42%	47%	37%
	35-44歳	17%	9%	10%	16%	12%	7%	13%	11%	11%	14%	24%	7%	16%	12%
	45-54歳	0%	5%	3%	3%	2%	10%	4%	0%	9%	0%	3%	7%	5%	4%
	55歳以上	0%	5%	0%	6%	2%	0%	2%	0%	2%	0%	0%	2%	3%	2%
	無回答	2%	2%	0%	0%	2%	1%	0%	0%	0%	0%	0%	0%	0%	1%
居住地	茨城県	0%	0%	0%	0%	0%	0%	0%	0%	0%	0%	0%	0%	0%	0%
	栃木県	0%	0%	0%	0%	0%	0%	0%	0%	0%	0%	0%	0%	0%	0%
	群馬県	0%	0%	0%	0%	0%	0%	0%	0%	0%	0%	0%	0%	0%	0%
	埼玉県	10%	7%	9%	10%	11%	7%	15%	11%	9%	11%	0%	11%	3%	9%
	千葉県	0%	2%	0%	0%	0%	0%	0%	0%	2%	0%	0%	0%	0%	0%
	東京都	90%	86%	91%	87%	88%	93%	83%	89%	85%	86%	100%	89%	97%	89%
	神奈川県	0%	5%	0%	3%	2%	0%	2%	0%	4%	3%	0%	0%	0%	1%

Men who have sex with men															
(年度)	2007	2008				2009				2010				合計	
(月)	1-3	4-6	7-9	10-12	1-3	4-6	7-9	10-12	1-3	4-6	7-9	10-12	合計		
(計)	5	8	5	11	9	9	11	7	11	11	17	17	130		
年齢	24歳以下	40%	63%	60%	18%	56%	33%	33%	45%	14%	55%	27%	47%	41%	41%
	25-34歳	40%	25%	40%	45%	33%	44%	33%	27%	43%	18%	27%	29%	41%	34%
	35-44歳	0%	13%	0%	27%	11%	0%	33%	18%	29%	18%	18%	12%	6%	15%
	45-54歳	20%	0%	0%	0%	0%	22%	0%	9%	0%	9%	27%	6%	12%	8%
	55歳以上	0%	0%	0%	9%	0%	0%	0%	0%	14%	0%	0%	6%	0%	2%
	無回答	0%	0%	0%	0%	0%	0%	0%	0%	0%	0%	0%	0%	0%	0%
居住地	茨城県	0%	0%	0%	0%	0%	0%	0%	0%	0%	0%	0%	0%	0%	0%
	栃木県	0%	0%	0%	0%	0%	0%	0%	0%	0%	0%	0%	0%	0%	0%
	群馬県	0%	0%	0%	0%	0%	0%	0%	0%	0%	0%	0%	0%	0%	0%
	埼玉県	20%	13%	0%	27%	0%	22%	33%	18%	29%	18%	0%	12%	12%	15%
	千葉県	0%	0%	0%	0%	11%	0%	0%	0%	0%	0%	0%	0%	0%	1%
	東京都	80%	88%	100%	73%	89%	78%	67%	82%	71%	82%	100%	76%	88%	82%
	神奈川県	0%	0%	0%	0%	0%	0%	0%	0%	0%	0%	12%	0%	0%	2%

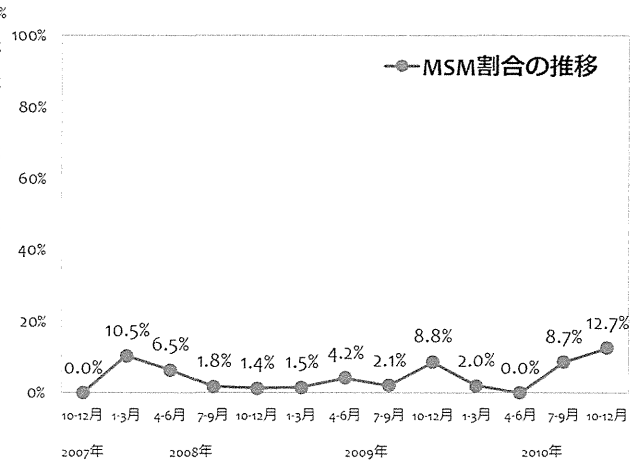
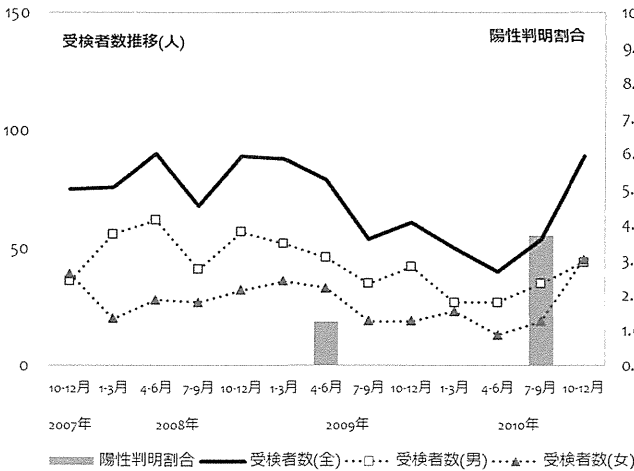
首都圏(保健所)

港区みなと保健所

	2007				2008				2009				2010				合計
	(月)	1-3	4-6	7-9	10-12	1-3	4-6	7-9	10-12	1-3	4-6	7-9	10-12				
男性受検者数	36	56	62	41	57	52	46	35	42	27	27	35	44	560			
男性陽性者数	0	0	0	0	0	0	1	0	0	0	0	1	0	2			
女性受検者数	39	20	28	27	32	36	33	19	19	23	13	19	45	353			
女性陽性者数	0	0	0	0	0	0	0	0	0	0	0	1	0	1			
その他受検者数	0	0	0	0	0	0	0	0	0	0	0	0	0	0			
その他陽性者数	0	0	0	0	0	0	0	0	0	0	0	0	0	0			
受検者計	75	76	90	68	89	88	79	54	61	50	40	54	89	913			
陽性者計	0	0	0	0	0	0	1	0	0	0	0	2	0	3			
陽性判明割合(男)	0.00%	0.00%	0.00%	0.00%	0.00%	0.00%	2.17%	0.00%	0.00%	0.00%	0.00%	2.86%	0.00%	0.36%			
陽性判明割合(女)	0.00%	0.00%	0.00%	0.00%	0.00%	0.00%	0.00%	0.00%	0.00%	0.00%	0.00%	5.26%	0.00%	0.28%			
陽性判明割合(全)	0.00%	0.00%	0.00%	0.00%	0.00%	0.00%	1.27%	0.00%	0.00%	0.00%	0.00%	3.70%	0.00%	0.33%			

	2007				2008				2009				2010				合計
	(月)	1-3	4-6	7-9	10-12	1-3	4-6	7-9	10-12	1-3	4-6	7-9	10-12				
回収数	45	61	64	59	80	67	73	49	62	51	38	50	65	764			
回収率	60.0%	80.3%	71.1%	86.8%	89.9%	76.1%	92.4%	90.7%	101.6%	102.0%	95.0%	92.6%	73.0%				
分析対象者数	41	57	62	57	74	65	71	47	57	50	34	46	55	716			
有効回収率	54.7%	75.0%	68.9%	83.8%	83.1%	73.9%	89.9%	87.0%	93.4%	100.0%	85.0%	85.2%	61.8%				

	2007				2008				2009				2010				合計
	(月)	1-3	4-6	7-9	10-12	1-3	4-6	7-9	10-12	1-3	4-6	7-9	10-12				
MSM除く男性(n)	25	32	41	34	46	38	37	32	32	26	23	26	21	413			
(%)	61.0%	56.1%	66.1%	59.6%	62.2%	58.5%	52.1%	68.1%	56.1%	52.0%	67.6%	56.5%	38.2%	57.7%			
女性(n)	16	19	17	22	27	26	31	14	20	23	11	16	27	269			
(%)	39.0%	33.3%	27.4%	38.6%	36.5%	40.0%	43.7%	29.8%	35.1%	46.0%	32.4%	34.8%	49.1%	37.6%			
その他(n)	0	0	0	0	0	0	0	0	0	0	0	0	0	0			
(%)	0.0%	0.0%	0.0%	0.0%	0.0%	0.0%	0.0%	0.0%	0.0%	0.0%	0.0%	0.0%	0.0%	0.0%			
MSM(n)	0	6	4	1	1	1	3	1	5	1	0	4	7	34			
(%)	0.0%	10.5%	6.5%	1.8%	1.4%	1.5%	4.2%	2.1%	8.8%	2.0%	0.0%	8.7%	12.7%	4.7%			



○ 性別および性指向別の基本属性 (年齢割合・居住地割合)

港区みなと保健所

東京

MSM(Men who have sex with men)を除く男性																		
	(年度)	2007				2008				2009				2010				合計
		(月)				(月)				(月)				(月)				
		1-3	4-6	7-9	10-12	1-3	4-6	7-9	10-12	1-3	4-6	7-9	10-12	1-3	4-6	7-9	10-12	
	(計)	25	32	41	34	46	38	37	32	32	26	23	26	21	413			
年齢	24歳以下	0%	3%	2%	3%	2%	11%	14%	0%	9%	4%	0%	8%	10%	5%			
	25-34歳	32%	41%	29%	41%	35%	29%	22%	44%	47%	35%	43%	35%	19%	35%			
	35-44歳	40%	31%	46%	35%	39%	37%	35%	34%	31%	58%	30%	46%	38%	38%			
	45-54歳	16%	22%	20%	12%	13%	18%	19%	13%	13%	4%	22%	8%	29%	16%			
	55歳以上	12%	3%	2%	9%	11%	5%	11%	9%	0%	0%	4%	4%	5%	6%			
	無回答	0%	0%	0%	0%	0%	0%	0%	0%	0%	0%	0%	0%	0%	0%			
居住地	茨城県	0%	0%	0%	3%	2%	3%	0%	0%	3%	0%	0%	8%	0%	1%			
	栃木県	0%	0%	0%	0%	0%	0%	0%	0%	0%	0%	0%	0%	0%	0%			
	群馬県	0%	0%	0%	0%	0%	0%	0%	0%	0%	0%	0%	0%	0%	0%			
	埼玉県	4%	13%	7%	12%	9%	5%	3%	6%	3%	8%	0%	0%	0%	6%			
	千葉県	8%	6%	17%	0%	2%	8%	14%	9%	3%	4%	4%	4%	10%	7%			
	東京都	68%	69%	68%	79%	72%	74%	70%	81%	81%	88%	91%	81%	86%	77%			
	神奈川県	20%	13%	7%	6%	15%	11%	14%	3%	9%	0%	4%	8%	5%	9%			

女性																		
	(年度)	2007				2008				2009				2010				合計
		(月)				(月)				(月)				(月)				
		1-3	4-6	7-9	10-12	1-3	4-6	7-9	10-12	1-3	4-6	7-9	10-12	1-3	4-6	7-9	10-12	
	(計)	16	19	17	22	27	26	31	14	20	23	11	16	27	269			
年齢	24歳以下	19%	42%	24%	23%	22%	8%	23%	14%	35%	17%	9%	38%	15%	22%			
	25-34歳	44%	42%	59%	36%	41%	65%	55%	43%	35%	65%	64%	50%	52%	50%			
	35-44歳	31%	16%	18%	36%	33%	23%	19%	36%	30%	13%	18%	13%	26%	24%			
	45-54歳	0%	0%	0%	5%	0%	0%	3%	0%	0%	4%	0%	0%	7%	2%			
	55歳以上	0%	0%	0%	0%	0%	0%	0%	7%	0%	0%	0%	0%	0%	0%			
	無回答	6%	0%	0%	0%	4%	4%	0%	0%	0%	0%	9%	0%	0%	1%			
居住地	茨城県	0%	0%	0%	0%	0%	0%	0%	0%	0%	0%	9%	0%	0%	0%			
	栃木県	0%	0%	0%	0%	0%	0%	0%	0%	0%	0%	0%	0%	0%	0%			
	群馬県	0%	0%	0%	0%	0%	0%	0%	0%	0%	0%	0%	0%	0%	0%			
	埼玉県	0%	0%	0%	5%	7%	0%	0%	0%	10%	0%	0%	0%	4%	2%			
	千葉県	0%	0%	6%	0%	0%	0%	0%	7%	5%	4%	0%	6%	7%	3%			
	東京都	94%	95%	88%	91%	89%	96%	100%	93%	80%	78%	91%	94%	85%	90%			
	神奈川県	6%	5%	6%	5%	4%	4%	0%	0%	5%	17%	0%	0%	4%	4%			

Men who have sex with men																		
	(年度)	2007				2008				2009				2010				合計
		(月)				(月)				(月)				(月)				
		1-3	4-6	7-9	10-12	1-3	4-6	7-9	10-12	1-3	4-6	7-9	10-12	1-3	4-6	7-9	10-12	
	(計)	0	6	4	1	1	1	3	1	5	1	0	4	7	34			
年齢	24歳以下	0%	0%	0%	0%	0%	0%	0%	100%	0%	0%	0%	25%	14%	9%			
	25-34歳	0%	83%	50%	0%	0%	0%	0%	0%	20%	0%	0%	0%	14%	26%			
	35-44歳	0%	17%	50%	100%	100%	100%	33%	0%	20%	100%	0%	0%	43%	35%			
	45-54歳	0%	0%	0%	0%	0%	0%	0%	0%	40%	0%	0%	50%	14%	15%			
	55歳以上	0%	0%	0%	0%	0%	0%	67%	0%	20%	0%	0%	25%	14%	15%			
	無回答	0%	0%	0%	0%	0%	0%	0%	0%	0%	0%	0%	0%	0%	0%			
居住地	茨城県	0%	0%	0%	0%	0%	0%	0%	0%	0%	0%	0%	0%	0%	0%			
	栃木県	0%	0%	0%	0%	0%	0%	0%	0%	0%	0%	0%	0%	0%	0%			
	群馬県	0%	0%	0%	0%	0%	0%	0%	0%	0%	0%	0%	0%	0%	0%			
	埼玉県	0%	0%	0%	0%	0%	0%	0%	0%	0%	0%	0%	25%	0%	3%			
	千葉県	0%	0%	0%	0%	0%	0%	0%	0%	20%	0%	0%	0%	0%	3%			
	東京都	0%	67%	100%	100%	100%	100%	100%	100%	80%	100%	0%	75%	86%	85%			
	神奈川県	0%	33%	0%	0%	0%	0%	0%	0%	0%	0%	0%	0%	14%	9%			

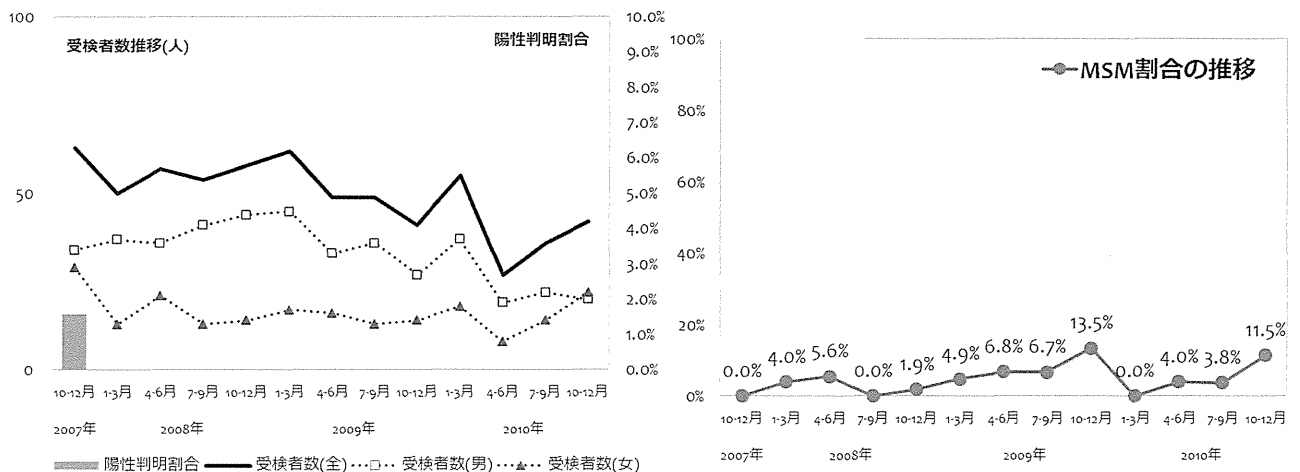
首都圏(保健所)

千代田区千代田保健所

	2007				2008				2009				2010				合計	
	(年度)	(月)				(月)				(月)				(月)				
		1-3	4-6	7-9	10-12	1-3	4-6	7-9	10-12	1-3	4-6	7-9	10-12	1-3	4-6	7-9	10-12	
男性受検者数	34	37	36	41	44	45	33	36	27	37	19	22	20	431				
男性陽性者数	1	0	0	0	0	0	0	0	0	0	0	0	0	1				
女性受検者数	29	13	21	13	14	17	16	13	14	18	8	14	22	212				
女性陽性者数	0	0	0	0	0	0	0	0	0	0	0	0	0	0				
その他受検者数	0	0	0	0	0	0	0	0	0	0	0	0	0	0				
その他陽性者数	0	0	0	0	0	0	0	0	0	0	0	0	0	0				
受検者計	63	50	57	54	58	62	49	49	41	55	27	36	42	643				
陽性者計	1	0	0	0	0	0	0	0	0	0	0	0	0	1				
陽性判明割合(男)	2.94%	0.00%	0.00%	0.00%	0.00%	0.00%	0.00%	0.00%	0.00%	0.00%	0.00%	0.00%	0.00%	0.23%				
陽性判明割合(女)	0.00%	0.00%	0.00%	0.00%	0.00%	0.00%	0.00%	0.00%	0.00%	0.00%	0.00%	0.00%	0.00%	0.00%				
陽性判明割合(全)	1.59%	0.00%	0.00%	0.00%	0.00%	0.00%	0.00%	0.00%	0.00%	0.00%	0.00%	0.00%	0.00%	0.16%				

	2007				2008				2009				2010				合計	
	(年度)	(月)				(月)				(月)				(月)				
		1-3	4-6	7-9	10-12	1-3	4-6	7-9	10-12	1-3	4-6	7-9	10-12	1-3	4-6	7-9	10-12	
回収数	61	51	54	47	56	45	46	46	39	47	26	28	27	573				
回収率	96.8%	102.0%	94.7%	87.0%	96.6%	72.6%	93.9%	93.9%	95.1%	85.5%	96.3%	77.8%	64.3%					
分析対象者数	58	50	54	45	52	41	44	45	37	44	25	26	26	547				
有効回収率	92.1%	100.0%	94.7%	83.3%	89.7%	66.1%	89.8%	91.8%	90.2%	80.0%	92.6%	72.2%	61.9%					

	2007				2008				2009				2010				合計	
	(年度)	(月)				(月)				(月)				(月)				
		1-3	4-6	7-9	10-12	1-3	4-6	7-9	10-12	1-3	4-6	7-9	10-12	1-3	4-6	7-9	10-12	
MSM除く男性(n)	30	33	30	35	39	29	29	28	20	30	16	14	10	343				
(%)	51.7%	66.0%	55.6%	77.8%	75.0%	70.7%	65.9%	62.2%	54.1%	68.2%	64.0%	53.8%	38.5%	62.7%				
女性(n)	28	15	21	10	12	10	12	14	12	14	8	11	13	180				
(%)	48.3%	30.0%	38.9%	22.2%	23.1%	24.4%	27.3%	31.1%	32.4%	31.8%	32.0%	42.3%	50.0%	32.9%				
その他(n)	0	0	0	0	0	0	0	0	0	0	0	0	0	0				
(%)	0.0%	0.0%	0.0%	0.0%	0.0%	0.0%	0.0%	0.0%	0.0%	0.0%	0.0%	0.0%	0.0%	0.0%				
MSM(n)	0	2	3	0	1	2	3	3	5	0	1	1	3	24				
(%)	0.0%	4.0%	5.6%	0.0%	1.9%	4.9%	6.8%	6.7%	13.5%	0.0%	4.0%	3.8%	11.5%	4.4%				





○ 性別および性指向別の基本属性 (年齢割合・居住地割合)

千代田区千代田保健所

東京

MSM(Men who have sex with men)を除く男性																	
(年度)	2007				2008				2009				2010				合計
(月)	1-3	4-6	7-9	10-12	1-3	4-6	7-9	10-12	1-3	4-6	7-9	10-12	1-3	4-6	7-9	10-12	
(計)	30	33	30	35	39	29	29	28	20	30	16	14	10	343			
年齢	24歳以下	10%	9%	10%	6%	3%	14%	10%	11%	0%	3%	6%	7%	10%	8%		
	25-34歳	47%	27%	27%	37%	33%	34%	21%	32%	35%	43%	38%	14%	20%	33%		
	35-44歳	17%	42%	33%	34%	26%	31%	41%	36%	40%	33%	25%	29%	30%	32%		
	45-54歳	7%	15%	20%	11%	23%	10%	24%	11%	15%	17%	13%	29%	40%	17%		
	55歳以上	20%	6%	7%	11%	15%	10%	3%	11%	10%	3%	19%	21%	0%	10%		
	無回答	0%	0%	3%	0%	0%	0%	0%	0%	0%	0%	0%	0%	0%	0%		
居住地	茨城県	3%	3%	0%	0%	0%	3%	7%	0%	0%	0%	0%	7%	0%	2%		
	栃木県	0%	0%	0%	0%	0%	3%	0%	0%	0%	0%	0%	0%	0%	0%		
	群馬県	0%	0%	0%	0%	3%	0%	0%	0%	0%	0%	0%	0%	0%	0%		
	埼玉県	13%	6%	0%	14%	8%	7%	3%	14%	15%	10%	0%	14%	0%	8%		
	千葉県	10%	15%	7%	14%	8%	10%	10%	11%	20%	3%	0%	7%	20%	10%		
	東京都	70%	64%	80%	63%	72%	72%	76%	71%	60%	73%	88%	71%	80%	71%		
	神奈川県	3%	12%	13%	9%	10%	3%	3%	4%	5%	13%	13%	0%	0%	8%		

女性																	
(年度)	2007				2008				2009				2010				合計
(月)	1-3	4-6	7-9	10-12	1-3	4-6	7-9	10-12	1-3	4-6	7-9	10-12	1-3	4-6	7-9	10-12	
(計)	28	15	21	10	12	10	12	14	12	14	8	11	13	180			
年齢	24歳以下	36%	27%	14%	30%	42%	50%	42%	43%	33%	29%	38%	36%	46%	34%		
	25-34歳	50%	47%	57%	30%	33%	40%	50%	50%	33%	64%	63%	55%	15%	46%		
	35-44歳	11%	20%	29%	40%	17%	0%	0%	7%	33%	7%	0%	9%	31%	16%		
	45-54歳	0%	7%	0%	0%	8%	10%	8%	0%	0%	0%	0%	0%	8%	3%		
	55歳以上	4%	0%	0%	0%	0%	0%	0%	0%	0%	0%	0%	0%	0%	1%		
	無回答	0%	0%	0%	0%	0%	0%	0%	0%	0%	0%	0%	0%	0%	0%		
居住地	茨城県	0%	0%	0%	0%	0%	0%	8%	0%	0%	0%	0%	0%	0%	1%		
	栃木県	0%	0%	0%	0%	0%	0%	0%	0%	0%	0%	0%	0%	0%	0%		
	群馬県	0%	0%	0%	0%	0%	0%	0%	0%	0%	0%	0%	0%	0%	0%		
	埼玉県	0%	0%	0%	0%	0%	0%	0%	0%	8%	0%	0%	0%	0%	1%		
	千葉県	14%	27%	14%	0%	0%	10%	17%	7%	0%	14%	25%	0%	0%	11%		
	東京都	82%	60%	76%	90%	92%	90%	75%	79%	75%	79%	75%	82%	100%	81%		
	神奈川県	4%	13%	10%	10%	8%	0%	0%	14%	17%	7%	0%	18%	0%	8%		

Men who have sex with men																	
(年度)	2007				2008				2009				2010				合計
(月)	1-3	4-6	7-9	10-12	1-3	4-6	7-9	10-12	1-3	4-6	7-9	10-12	1-3	4-6	7-9	10-12	
(計)	0	2	3	0	1	2	3	3	5	0	1	1	3	24			
年齢	24歳以下	0%	0%	0%	0%	0%	50%	0%	33%	0%	0%	100%	0%	0%	13%		
	25-34歳	0%	50%	100%	0%	100%	0%	33%	33%	60%	0%	0%	0%	67%	50%		
	35-44歳	0%	0%	0%	0%	0%	50%	33%	0%	20%	0%	0%	100%	0%	17%		
	45-54歳	0%	50%	0%	0%	0%	0%	0%	0%	0%	0%	0%	0%	33%	8%		
	55歳以上	0%	0%	0%	0%	0%	0%	33%	33%	20%	0%	0%	0%	0%	13%		
	無回答	0%	0%	0%	0%	0%	0%	0%	0%	0%	0%	0%	0%	0%	0%		
居住地	茨城県	0%	0%	0%	0%	0%	0%	0%	0%	0%	0%	0%	0%	0%	0%		
	栃木県	0%	0%	0%	0%	0%	0%	0%	0%	0%	0%	0%	0%	0%	0%		
	群馬県	0%	0%	0%	0%	0%	0%	0%	0%	0%	0%	0%	0%	0%	0%		
	埼玉県	0%	0%	0%	0%	0%	0%	0%	0%	0%	0%	0%	0%	0%	0%		
	千葉県	0%	50%	33%	0%	0%	0%	0%	33%	20%	0%	100%	0%	0%	21%		
	東京都	0%	50%	0%	0%	100%	100%	67%	67%	80%	0%	0%	100%	100%	67%		
	神奈川県	0%	0%	67%	0%	0%	0%	33%	0%	0%	0%	0%	0%	0%	13%		

首都圏(保健所)

杉並保健所

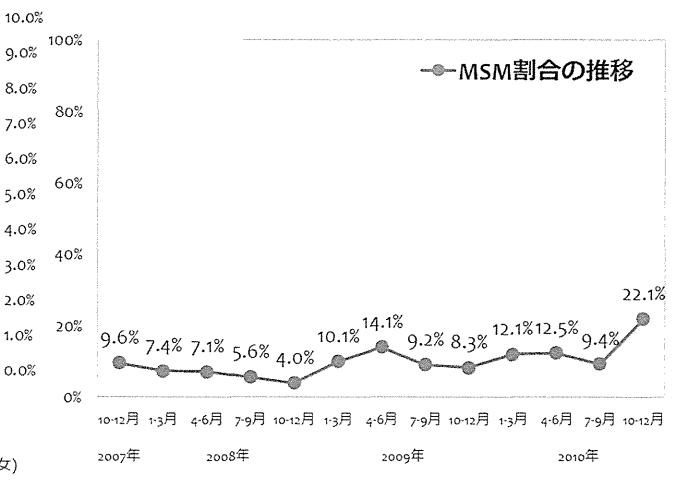
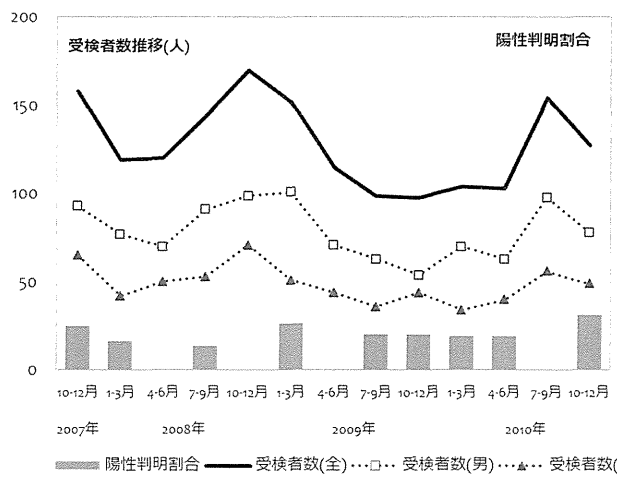
表 I	(年度)	2007				2008				2009				2010				合計
	(月)	1-3	4-6	7-9	10-12	1-3	4-6	7-9	10-12	1-3	4-6	7-9	10-12	1-3	4-6	7-9	10-12	
男性受検者数	93	77	70	91	99	101	71	63	54	70	63	98	78	1028				
男性陽性者数	2	1	0	1	0	2	0	1	1	1	1	0	2	12				
女性受検者数	65	42	50	53	71	51	44	36	44	34	40	56	49	635				
女性陽性者数	0	0	0	0	0	0	0	0	0	0	0	0	0	0				
その他受検者数	0	0	0	0	0	0	0	0	0	0	0	0	0	0				
その他陽性者数	0	0	0	0	0	0	0	0	0	0	0	0	0	0				

受検者計	158	119	120	144	170	152	115	99	98	104	103	154	127	1663
陽性者計	2	1	0	1	0	2	0	1	1	1	1	0	2	12

陽性判明割合(男)	2.15%	1.30%	0.00%	1.10%	0.00%	1.98%	0.00%	1.59%	1.85%	1.43%	1.59%	0.00%	2.56%	1.17%
陽性判明割合(女)	0.00%	0.00%	0.00%	0.00%	0.00%	0.00%	0.00%	0.00%	0.00%	0.00%	0.00%	0.00%	0.00%	0.00%
陽性判明割合(全)	1.27%	0.84%	0.00%	0.69%	0.00%	1.32%	0.00%	1.01%	1.02%	0.96%	0.97%	0.00%	1.57%	0.72%

表 II	(年度)	2007				2008				2009				2010				合計
	(月)	1-3	4-6	7-9	10-12	1-3	4-6	7-9	10-12	1-3	4-6	7-9	10-12	1-3	4-6	7-9	10-12	
回収数	117	58	77	97	103	116	78	80	49	70	68	111	80	1104				
回収率	74.1%	48.7%	64.2%	67.4%	60.6%	76.3%	67.8%	80.8%	50.0%	67.3%	66.0%	72.1%	63.0%					
分析対象者数	114	54	70	89	100	109	71	76	48	66	64	106	77	1044				
有効回収率	72.2%	45.4%	58.3%	61.8%	58.8%	71.7%	61.7%	76.8%	49.0%	63.5%	62.1%	68.8%	60.6%					

表 III	(年度)	2007				2008				2009				2010				合計
	(月)	1-3	4-6	7-9	10-12	1-3	4-6	7-9	10-12	1-3	4-6	7-9	10-12	1-3	4-6	7-9	10-12	
MSM除く男性(n)	65	27	31	49	50	63	33	41	22	46	35	54	32	548				
(%)	57.0%	50.0%	44.3%	55.1%	50.0%	57.8%	46.5%	53.9%	45.8%	69.7%	54.7%	50.9%	41.6%	52.5%				
女性(n)	38	23	34	35	46	35	28	28	22	12	21	42	28	392				
(%)	33.3%	42.6%	48.6%	39.3%	46.0%	32.1%	39.4%	36.8%	45.8%	18.2%	32.8%	39.6%	36.4%	37.5%				
その他(n)	0	0	0	0	0	0	0	0	0	0	0	0	0	0				
(%)	0.0%	0.0%	0.0%	0.0%	0.0%	0.0%	0.0%	0.0%	0.0%	0.0%	0.0%	0.0%	0.0%	0.0%				
MSM(n)	11	4	5	5	4	11	10	7	4	8	8	10	17	104				
(%)	9.6%	7.4%	7.1%	5.6%	4.0%	10.1%	14.1%	9.2%	8.3%	12.1%	12.5%	9.4%	22.1%	10.0%				



○ 性別および性指向別の基本属性 (年齢割合・居住地割合)

杉並保健所

東京

MSM(Men who have sex with men)を除く男性

	(年度)	2007				2008				2009				2010				合計	
		(月)	1-3		4-6		7-9		10-12		1-3		4-6		7-9		10-12		
			(計)																
		65	27	31	49	50	63	33	41	22	46	35	54	32	548				
年齢	24歳以下	12%	19%	16%	14%	20%	16%	21%	15%	18%	17%	17%	9%	16%	16%				
	25-34歳	46%	52%	35%	57%	46%	29%	45%	46%	45%	33%	29%	39%	44%	42%				
	35-44歳	28%	11%	32%	18%	26%	35%	21%	24%	18%	30%	20%	43%	25%	27%				
	45-54歳	8%	7%	10%	8%	4%	19%	3%	5%	14%	11%	20%	7%	13%	10%				
	55歳以上	6%	7%	6%	0%	4%	2%	9%	10%	5%	9%	14%	2%	3%	5%				
	無回答	0%	4%	0%	2%	0%	0%	0%	0%	0%	0%	0%	0%	0%	0%				
居住地	茨城県	0%	0%	0%	0%	0%	0%	0%	0%	0%	0%	0%	0%	0%	0%				
	栃木県	0%	0%	0%	0%	0%	0%	0%	0%	0%	0%	0%	0%	0%	0%				
	群馬県	0%	0%	0%	0%	0%	0%	0%	0%	0%	0%	0%	0%	0%	0%				
	埼玉県	2%	4%	3%	0%	4%	5%	3%	0%	5%	2%	6%	2%	6%	3%				
	千葉県	0%	0%	0%	0%	0%	0%	3%	0%	0%	0%	0%	0%	0%	0%				
	東京都	97%	93%	97%	100%	94%	94%	94%	100%	95%	98%	94%	98%	94%	96%				
	神奈川県	2%	4%	0%	0%	2%	2%	0%	0%	0%	0%	0%	0%	0%	1%				

女性

	(年度)	2007				2008				2009				2010				合計	
		(月)	1-3		4-6		7-9		10-12		1-3		4-6		7-9		10-12		
			(計)																
		38	23	34	35	46	35	28	28	22	12	21	42	28	392				
年齢	24歳以下	26%	43%	38%	26%	28%	14%	32%	32%	36%	42%	14%	24%	25%	28%				
	25-34歳	53%	35%	41%	46%	50%	63%	46%	43%	50%	33%	52%	52%	54%	49%				
	35-44歳	13%	13%	18%	23%	17%	14%	18%	21%	14%	25%	24%	19%	14%	18%				
	45-54歳	3%	4%	3%	3%	2%	3%	4%	4%	0%	0%	5%	2%	7%	3%				
	55歳以上	3%	4%	0%	3%	2%	3%	0%	0%	0%	0%	5%	0%	0%	2%				
	無回答	3%	0%	0%	0%	0%	3%	0%	0%	0%	0%	0%	2%	0%	1%				
居住地	茨城県	0%	0%	0%	0%	0%	0%	0%	0%	0%	0%	0%	0%	0%	0%				
	栃木県	0%	0%	0%	0%	0%	0%	0%	0%	0%	0%	0%	0%	0%	0%				
	群馬県	0%	0%	0%	0%	0%	0%	0%	0%	0%	0%	0%	0%	0%	0%				
	埼玉県	0%	4%	3%	0%	2%	3%	4%	4%	0%	0%	0%	0%	0%	2%				
	千葉県	0%	0%	0%	0%	0%	0%	0%	0%	0%	0%	0%	0%	0%	0%				
	東京都	100%	96%	97%	100%	98%	97%	93%	96%	100%	100%	100%	100%	100%	98%				
	神奈川県	0%	0%	0%	0%	0%	0%	4%	0%	0%	0%	0%	0%	0%	0%				

Men who have sex with men

	(年度)	2007				2008				2009				2010				合計	
		(月)	1-3		4-6		7-9		10-12		1-3		4-6		7-9		10-12		
			(計)																
		11	4	5	5	4	11	10	7	4	8	8	10	17	104				
年齢	24歳以下	27%	25%	40%	0%	0%	9%	40%	29%	0%	13%	25%	0%	12%	17%				
	25-34歳	45%	25%	0%	20%	0%	36%	30%	0%	0%	25%	50%	50%	35%	30%				
	35-44歳	18%	50%	60%	60%	100%	45%	20%	71%	75%	50%	13%	30%	47%	43%				
	45-54歳	9%	0%	0%	20%	0%	0%	0%	0%	0%	13%	0%	10%	6%	5%				
	55歳以上	0%	0%	0%	0%	0%	9%	10%	0%	0%	0%	13%	10%	0%	4%				
	無回答	0%	0%	0%	0%	0%	0%	0%	0%	25%	0%	0%	0%	0%	1%				
居住地	茨城県	0%	0%	0%	0%	0%	0%	0%	0%	0%	0%	0%	0%	0%	0%				
	栃木県	0%	0%	0%	0%	0%	0%	0%	0%	0%	0%	0%	0%	0%	0%				
	群馬県	0%	0%	0%	0%	0%	0%	0%	0%	0%	0%	0%	0%	0%	0%				
	埼玉県	0%	0%	0%	0%	0%	0%	0%	0%	0%	0%	0%	0%	0%	0%				
	千葉県	18%	0%	0%	0%	0%	0%	10%	0%	0%	0%	0%	0%	0%	3%				
	東京都	82%	100%	100%	100%	100%	100%	90%	86%	100%	88%	88%	100%	100%	94%				
	神奈川県	0%	0%	0%	0%	0%	0%	0%	14%	0%	13%	13%	0%	0%	3%				

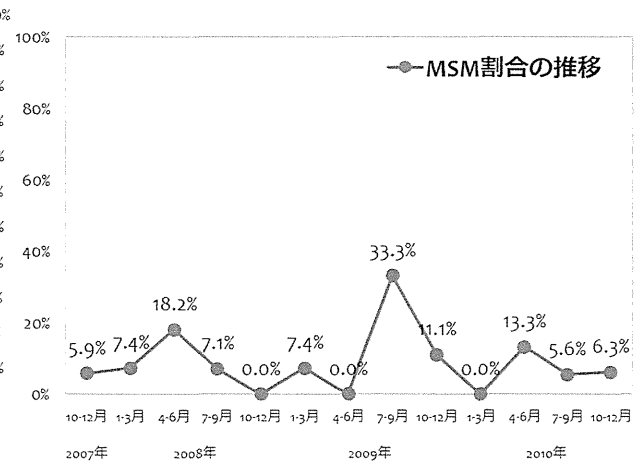
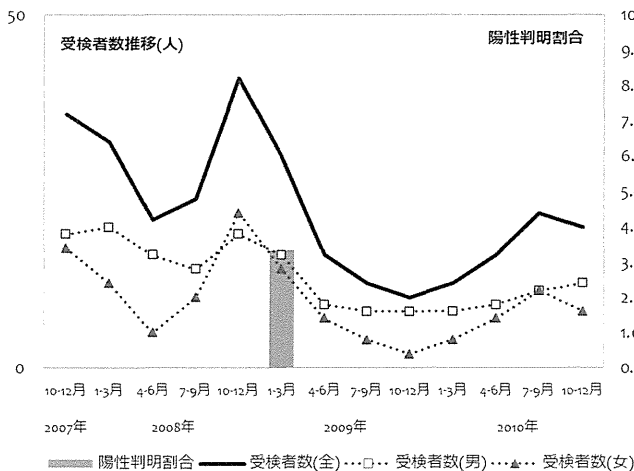
首都圏(保健所)

荒川区保健所

	2007				2008				2009				2010				合計
	(年度)	(月)			(年度)	(月)			(年度)	(月)			(年度)	(月)			
男性受検者数	19	20	16	14	19	16	9	8	8	8	9	11	12	169			
男性陽性者数	0	0	0	0	0	1	0	0	0	0	0	0	0	1			
女性受検者数	17	12	5	10	22	14	7	4	2	4	7	11	8	123			
女性陽性者数	0	0	0	0	0	0	0	0	0	0	0	0	0	0			
その他受検者数	0	0	0	0	0	0	0	0	0	0	0	0	0	0			
その他陽性者数	0	0	0	0	0	0	0	0	0	0	0	0	0	0			
受検者計	36	32	21	24	41	30	16	12	10	12	16	22	20	292			
陽性者計	0	0	0	0	0	1	0	0	0	0	0	0	0	1			
陽性判明割合(男)	0.00%	0.00%	0.00%	0.00%	0.00%	6.25%	0.00%	0.00%	0.00%	0.00%	0.00%	0.00%	0.00%	0.59%			
陽性判明割合(女)	0.00%	0.00%	0.00%	0.00%	0.00%	0.00%	0.00%	0.00%	0.00%	0.00%	0.00%	0.00%	0.00%	0.00%			
陽性判明割合(全)	0.00%	0.00%	0.00%	0.00%	0.00%	3.33%	0.00%	0.00%	0.00%	0.00%	0.00%	0.00%	0.00%	0.34%			

	2007				2008				2009				2010				合計
	(年度)	(月)			(年度)	(月)			(年度)	(月)			(年度)	(月)			
回収数	36	30	13	15	28	27	7	7	10	10	16	20	17	236			
回収率	100.0%	93.8%	61.9%	62.5%	68.3%	90.0%	43.8%	58.3%	100.0%	83.3%	100.0%	90.9%	85.0%				
分析対象者数	34	27	11	14	26	27	7	6	9	10	15	18	16	220			
有効回収率	94.4%	84.4%	52.4%	58.3%	63.4%	90.0%	43.8%	50.0%	90.0%	83.3%	93.8%	81.8%	80.0%				

	2007				2008				2009				2010				合計
	(年度)	(月)			(年度)	(月)			(年度)	(月)			(年度)	(月)			
MSM除く男性(n)	15	16	7	9	14	12	4	2	6	6	6	7	7	111			
(%)	44.1%	59.3%	63.6%	64.3%	53.8%	44.4%	57.1%	33.3%	66.7%	60.0%	40.0%	38.9%	43.8%	50.5%			
女性(n)	17	9	2	4	12	13	3	2	2	4	7	10	8	93			
(%)	50.0%	33.3%	18.2%	28.6%	46.2%	48.1%	42.9%	33.3%	22.2%	40.0%	46.7%	55.6%	50.0%	42.3%			
その他(n)	0	0	0	0	0	0	0	0	0	0	0	0	0	0			
(%)	0.0%	0.0%	0.0%	0.0%	0.0%	0.0%	0.0%	0.0%	0.0%	0.0%	0.0%	0.0%	0.0%	0.0%			
MSM(n)	2	2	2	1	0	2	0	2	1	0	2	1	1	16			
(%)	5.9%	7.4%	18.2%	7.1%	0.0%	7.4%	0.0%	33.3%	11.1%	0.0%	13.3%	5.6%	6.3%	7.3%			



○ 性別および性指向別の基本属性 (年齢割合・居住地割合)

荒川区保健所

東京

MSM(Men who have sex with men)を除く男性															
(年度)	2007	2008				2009				2010				合計	
(月)	1-3	4-6	7-9	10-12	1-3	4-6	7-9	10-12	1-3	4-6	7-9	10-12			
(計)	15	16	7	9	14	12	4	2	6	6	6	7	7	111	
年齢	24歳以下	7%	19%	14%	11%	21%	0%	25%	0%	0%	17%	17%	29%	14%	14%
	25-34歳	33%	38%	43%	67%	21%	50%	50%	50%	67%	50%	17%	43%	43%	41%
	35-44歳	20%	38%	29%	22%	21%	25%	0%	0%	17%	33%	0%	29%	0%	22%
	45-54歳	20%	6%	0%	0%	21%	25%	25%	50%	0%	0%	33%	0%	29%	14%
	55歳以上	20%	0%	14%	0%	14%	0%	0%	17%	0%	33%	0%	14%	9%	
	無回答	0%	0%	0%	0%	0%	0%	0%	0%	0%	0%	0%	0%	0%	0%
居住地	茨城県	0%	0%	0%	0%	7%	0%	0%	17%	0%	0%	0%	0%	2%	
	栃木県	7%	0%	0%	0%	0%	0%	0%	0%	0%	0%	0%	0%	1%	
	群馬県	0%	0%	0%	0%	0%	0%	0%	0%	0%	0%	0%	0%	0%	
	埼玉県	7%	6%	0%	0%	7%	0%	25%	0%	17%	0%	0%	0%	5%	
	千葉県	0%	0%	0%	0%	0%	17%	0%	0%	0%	0%	0%	0%	2%	
	東京都	87%	94%	100%	100%	86%	83%	75%	100%	83%	83%	100%	100%	100%	91%
	神奈川県	0%	0%	0%	0%	0%	0%	0%	0%	0%	0%	0%	0%	0%	0%

女性															
(年度)	2007	2008				2009				2010				合計	
(月)	1-3	4-6	7-9	10-12	1-3	4-6	7-9	10-12	1-3	4-6	7-9	10-12			
(計)	17	9	2	4	12	13	3	2	2	4	7	10	8	93	
年齢	24歳以下	29%	56%	50%	25%	33%	54%	0%	0%	50%	0%	0%	40%	25%	32%
	25-34歳	65%	44%	50%	75%	42%	38%	100%	50%	0%	50%	57%	40%	38%	49%
	35-44歳	6%	0%	0%	0%	25%	0%	0%	50%	50%	50%	29%	10%	0%	12%
	45-54歳	0%	0%	0%	0%	0%	0%	0%	0%	0%	0%	0%	0%	38%	3%
	55歳以上	0%	0%	0%	0%	0%	8%	0%	0%	0%	0%	14%	10%	0%	3%
	無回答	0%	0%	0%	0%	0%	0%	0%	0%	0%	0%	0%	0%	0%	0%
居住地	茨城県	0%	0%	0%	25%	0%	8%	0%	0%	0%	0%	0%	0%	0%	2%
	栃木県	6%	0%	0%	0%	0%	0%	0%	0%	0%	0%	0%	0%	0%	1%
	群馬県	0%	0%	0%	0%	0%	0%	0%	0%	0%	0%	0%	0%	0%	0%
	埼玉県	0%	0%	0%	0%	0%	0%	0%	0%	0%	0%	0%	0%	0%	0%
	千葉県	0%	0%	0%	0%	0%	8%	0%	0%	0%	0%	0%	10%	0%	2%
	東京都	94%	100%	100%	75%	100%	85%	100%	100%	100%	100%	100%	90%	100%	95%
	神奈川県	0%	0%	0%	0%	0%	0%	0%	0%	0%	0%	0%	0%	0%	0%

Men who have sex with men															
(年度)	2007	2008				2009				2010				合計	
(月)	1-3	4-6	7-9	10-12	1-3	4-6	7-9	10-12	1-3	4-6	7-9	10-12			
(計)	2	2	2	1	0	2	0	2	1	0	2	1	1	16	
年齢	24歳以下	0%	0%	0%	0%	0%	0%	0%	0%	0%	0%	100%	0%	6%	
	25-34歳	50%	0%	50%	0%	0%	0%	0%	0%	0%	0%	0%	0%	13%	
	35-44歳	0%	50%	50%	0%	0%	50%	0%	50%	0%	0%	0%	0%	25%	
	45-54歳	0%	50%	0%	0%	0%	50%	0%	50%	100%	0%	0%	0%	25%	
	55歳以上	50%	0%	0%	100%	0%	0%	0%	0%	0%	0%	100%	0%	100%	31%
	無回答	0%	0%	0%	0%	0%	0%	0%	0%	0%	0%	0%	0%	0%	0%
居住地	茨城県	0%	0%	0%	0%	0%	0%	0%	0%	0%	0%	0%	0%	0%	
	栃木県	0%	0%	0%	0%	0%	0%	0%	0%	0%	0%	0%	0%	0%	
	群馬県	0%	0%	0%	0%	0%	0%	0%	0%	0%	0%	0%	0%	0%	
	埼玉県	0%	0%	0%	0%	0%	0%	0%	0%	0%	0%	0%	0%	0%	
	千葉県	50%	0%	50%	0%	0%	0%	0%	0%	0%	0%	0%	0%	13%	
	東京都	50%	100%	50%	100%	0%	100%	0%	100%	100%	0%	100%	100%	100%	88%
	神奈川県	0%	0%	0%	0%	0%	0%	0%	0%	0%	0%	0%	0%	0%	0%

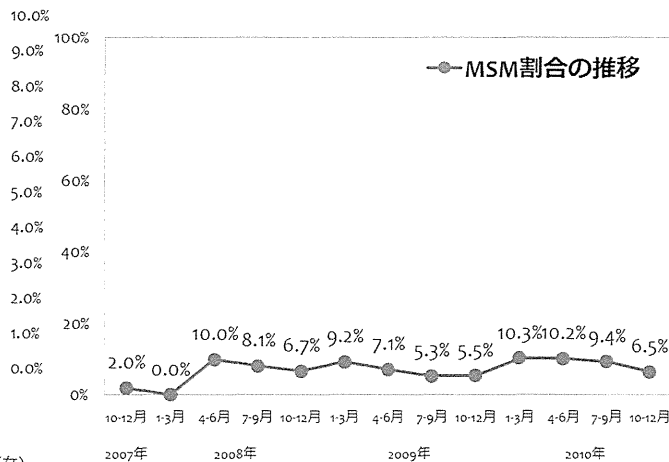
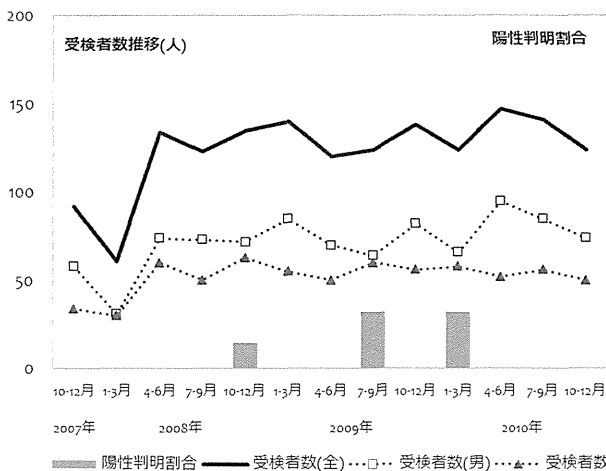
首都圏(保健所)

練馬区保健所豊玉保健相談所

	(年度)	2007				2008				2009				2010				合計
	(月)	1-3	4-6	7-9	10-12	1-3	4-6	7-9	10-12	1-3	4-6	7-9	10-12	1-3	4-6	7-9	10-12	
男性受検者数	58	31	74	73	72	85	70	64	82	66	95	85	74	929				
男性陽性者数	0	0	0	0	1	0	0	2	0	2	0	0	0	5				
女性受検者数	34	30	60	50	63	55	50	60	56	58	52	56	50	674				
女性陽性者数	0	0	0	0	0	0	0	0	0	0	0	0	0	0				
その他受検者数	0	0	0	0	0	0	0	0	0	0	0	0	0	0				
その他陽性者数	0	0	0	0	0	0	0	0	0	0	0	0	0	0				
受検者計	92	61	134	123	135	140	120	124	138	124	147	141	124	1603				
陽性者計	0	0	0	0	1	0	0	2	0	2	0	0	0	5				
陽性判明割合(男)	0.00%	0.00%	0.00%	0.00%	1.39%	0.00%	0.00%	3.13%	0.00%	3.03%	0.00%	0.00%	0.00%	0.54%				
陽性判明割合(女)	0.00%	0.00%	0.00%	0.00%	0.00%	0.00%	0.00%	0.00%	0.00%	0.00%	0.00%	0.00%	0.00%	0.00%				
陽性判明割合(全)	0.00%	0.00%	0.00%	0.00%	0.74%	0.00%	0.00%	1.61%	0.00%	1.61%	0.00%	0.00%	0.00%	0.31%				

	(年度)	2007				2008				2009				2010				合計
	(月)	1-3	4-6	7-9	10-12	1-3	4-6	7-9	10-12	1-3	4-6	7-9	10-12	1-3	4-6	7-9	10-12	
回収数	53	26	96	78	126	121	106	121	127	120	142	140	119	1375				
回収率	57.6%	42.6%	71.6%	63.4%	93.3%	86.4%	88.3%	97.6%	92.0%	96.8%	96.6%	99.3%	96.0%					
分析対象者数	50	25	90	74	120	119	98	113	110	116	127	127	107	1276				
有効回収率	54.3%	41.0%	67.2%	60.2%	88.9%	85.0%	81.7%	91.1%	79.7%	93.5%	86.4%	90.1%	86.3%					

	(年度)	2007				2008				2009				2010				合計
	(月)	1-3	4-6	7-9	10-12	1-3	4-6	7-9	10-12	1-3	4-6	7-9	10-12	1-3	4-6	7-9	10-12	
MSM除く男性(n)	31	11	40	35	54	61	52	51	63	53	69	62	56	638				
(%)	62.0%	44.0%	44.4%	47.3%	45.0%	51.3%	53.1%	45.1%	57.3%	45.7%	54.3%	48.8%	52.3%	50.0%				
女性(n)	18	14	41	33	58	47	39	55	41	51	45	53	44	539				
(%)	36.0%	56.0%	45.6%	44.6%	48.3%	39.5%	39.8%	48.7%	37.3%	44.0%	35.4%	41.7%	41.1%	42.2%				
その他(n)	0	0	0	0	0	0	0	1	0	0	0	0	0	1				
(%)	0.0%	0.0%	0.0%	0.0%	0.0%	0.0%	0.0%	0.9%	0.0%	0.0%	0.0%	0.0%	0.0%	0.1%				
MSM(n)	1	0	9	6	8	11	7	6	6	12	13	12	7	98				
(%)	2.0%	0.0%	10.0%	8.1%	6.7%	9.2%	7.1%	5.3%	5.5%	10.3%	10.2%	9.4%	6.5%	7.7%				



○ 性別および性指向別の基本属性 (年齢割合・居住地割合)

練馬区保健所豊玉保健相談所

東京

MSM(Men who have sex with men)を除く男性

	(年度)	2007				2008				2009				2010				合計	
		(月)	1-3	4-6	7-9	10-12	1-3	4-6	7-9	10-12	1-3	4-6	7-9	10-12	1-3	4-6	7-9		10-12
			(計)	31	11	40	35	54	61	52	51	63	53	69	62	56	638		
年齢	24歳以下	6%	36%	23%	20%	17%	11%	29%	14%	14%	13%	19%	11%	14%	16%				
	25-34歳	61%	9%	40%	49%	35%	36%	33%	35%	49%	49%	30%	42%	46%	41%				
	35-44歳	19%	55%	20%	20%	28%	34%	25%	33%	17%	23%	35%	35%	25%	28%				
	45-54歳	6%	0%	8%	3%	9%	10%	6%	4%	6%	6%	7%	6%	5%	6%				
	55歳以上	6%	0%	10%	3%	7%	5%	6%	12%	11%	8%	9%	5%	7%	7%				
	無回答	0%	0%	0%	6%	4%	3%	2%	2%	2%	2%	0%	0%	2%	2%				
居住地	茨城県	0%	0%	0%	0%	0%	0%	0%	0%	0%	0%	0%	0%	0%	0%				
	栃木県	0%	0%	0%	0%	0%	0%	0%	0%	0%	0%	0%	0%	0%	0%				
	群馬県	0%	0%	0%	0%	0%	0%	0%	0%	0%	0%	0%	0%	0%	0%				
	埼玉県	3%	0%	5%	6%	9%	10%	2%	2%	2%	4%	3%	13%	11%	6%				
	千葉県	0%	0%	3%	0%	0%	0%	0%	0%	3%	0%	6%	6%	2%	2%				
	東京都	97%	100%	90%	94%	89%	90%	94%	96%	94%	96%	88%	81%	88%	91%				
	神奈川県	0%	0%	3%	0%	2%	0%	4%	2%	2%	0%	3%	0%	0%	1%				

女性

	(年度)	2007				2008				2009				2010				合計	
		(月)	1-3	4-6	7-9	10-12	1-3	4-6	7-9	10-12	1-3	4-6	7-9	10-12	1-3	4-6	7-9		10-12
			(計)	18	14	41	33	58	47	39	55	41	51	45	53	44	539		
年齢	24歳以下	39%	36%	41%	45%	34%	38%	44%	24%	27%	37%	44%	38%	23%	36%				
	25-34歳	44%	43%	41%	27%	34%	40%	41%	58%	51%	49%	42%	40%	55%	44%				
	35-44歳	11%	14%	12%	24%	28%	15%	8%	11%	15%	10%	13%	17%	18%	15%				
	45-54歳	6%	7%	5%	0%	3%	6%	5%	5%	7%	2%	0%	4%	2%	4%				
	55歳以上	0%	0%	0%	0%	0%	0%	0%	2%	0%	0%	0%	2%	2%	1%				
	無回答	0%	0%	0%	3%	0%	0%	3%	0%	0%	2%	0%	0%	0%	1%				
居住地	茨城県	0%	0%	2%	0%	0%	0%	0%	0%	0%	0%	0%	0%	0%	0%				
	栃木県	0%	0%	0%	0%	0%	0%	0%	0%	0%	0%	0%	0%	0%	0%				
	群馬県	0%	0%	0%	0%	0%	0%	0%	0%	0%	0%	0%	0%	0%	0%				
	埼玉県	11%	14%	2%	6%	3%	4%	0%	5%	0%	10%	7%	6%	9%	5%				
	千葉県	0%	0%	0%	0%	2%	2%	0%	2%	0%	2%	4%	0%	0%	1%				
	東京都	83%	86%	95%	91%	95%	89%	100%	93%	100%	88%	89%	94%	91%	93%				
	神奈川県	6%	0%	0%	3%	0%	4%	0%	0%	0%	0%	0%	0%	0%	1%				

Men who have sex with men

	(年度)	2007				2008				2009				2010				合計	
		(月)	1-3	4-6	7-9	10-12	1-3	4-6	7-9	10-12	1-3	4-6	7-9	10-12	1-3	4-6	7-9		10-12
			(計)	1	0	9	6	8	11	7	6	6	12	13	12	7	98		
年齢	24歳以下	0%	0%	0%	17%	50%	18%	29%	33%	50%	33%	23%	33%	29%	28%				
	25-34歳	100%	0%	56%	33%	38%	36%	0%	50%	17%	50%	46%	58%	57%	43%				
	35-44歳	0%	0%	11%	33%	0%	36%	57%	17%	17%	8%	23%	0%	14%	18%				
	45-54歳	0%	0%	22%	17%	13%	0%	14%	0%	0%	8%	8%	8%	0%	8%				
	55歳以上	0%	0%	11%	0%	0%	9%	0%	0%	17%	0%	0%	0%	0%	3%				
	無回答	0%	0%	0%	0%	0%	0%	0%	0%	0%	0%	0%	0%	0%	0%				
居住地	茨城県	0%	0%	0%	0%	0%	0%	0%	0%	0%	0%	0%	0%	0%	0%				
	栃木県	0%	0%	0%	0%	0%	0%	0%	0%	0%	0%	0%	0%	0%	0%				
	群馬県	0%	0%	0%	0%	0%	0%	0%	0%	0%	0%	0%	0%	0%	0%				
	埼玉県	0%	0%	11%	0%	0%	9%	0%	0%	17%	0%	15%	0%	14%	6%				
	千葉県	0%	0%	0%	0%	0%	0%	0%	0%	0%	8%	0%	0%	0%	1%				
	東京都	100%	0%	89%	100%	100%	91%	100%	100%	83%	92%	85%	100%	86%	93%				
	神奈川県	0%	0%	0%	0%	0%	0%	0%	0%	0%	0%	0%	0%	0%	0%				

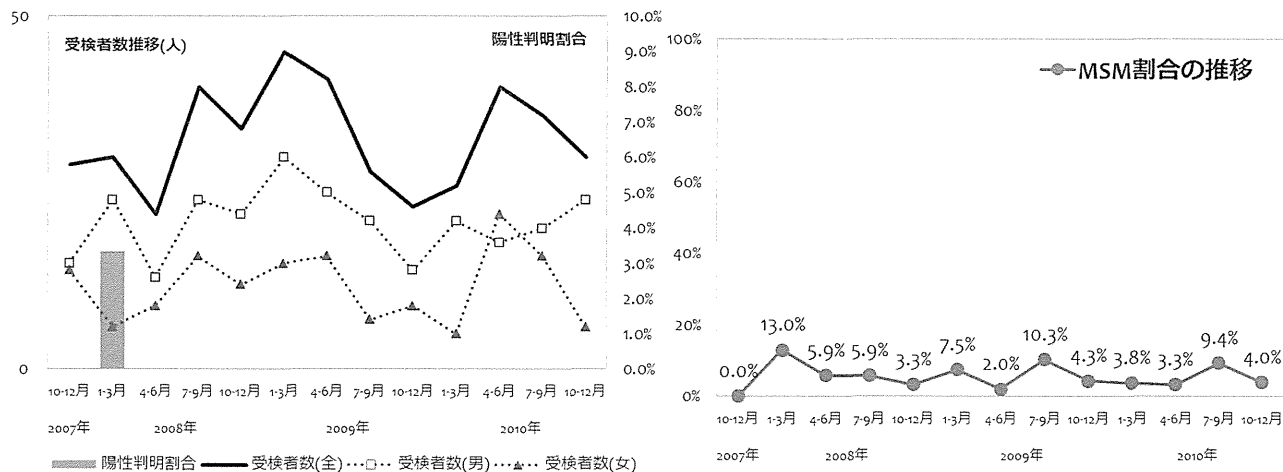
首都圏(保健所)

墨田区本所保健センター

	2007				2008				2009				2010				合計
	(年度)	(月)			(年度)	(月)			(年度)	(月)			(年度)	(月)			
男性受検者数	15	24	13	24	22	30	25	21	14	21	18	20	24	271			
男性陽性者数	0	1	0	0	0	0	0	0	0	0	0	0	0	1			
女性受検者数	14	6	9	16	12	15	16	7	9	5	22	16	6	153			
女性陽性者数	0	0	0	0	0	0	0	0	0	0	0	0	0	0			
その他受検者数	0	0	0	0	0	0	0	0	0	0	0	0	0	0			
その他陽性者数	0	0	0	0	0	0	0	0	0	0	0	0	0	0			
受検者計	29	30	22	40	34	45	41	28	23	26	40	36	30	424			
陽性者計	0	1	0	0	0	0	0	0	0	0	0	0	0	1			
陽性判明割合(男)	0.00%	4.17%	0.00%	0.00%	0.00%	0.00%	0.00%	0.00%	0.00%	0.00%	0.00%	0.00%	0.00%	0.37%			
陽性判明割合(女)	0.00%	0.00%	0.00%	0.00%	0.00%	0.00%	0.00%	0.00%	0.00%	0.00%	0.00%	0.00%	0.00%	0.00%			
陽性判明割合(全)	0.00%	3.33%	0.00%	0.00%	0.00%	0.00%	0.00%	0.00%	0.00%	0.00%	0.00%	0.00%	0.00%	0.24%			

	2007				2008				2009				2010				合計
	(年度)	(月)			(年度)	(月)			(年度)	(月)			(年度)	(月)			
回収数	24	25	17	36	31	41	52	29	23	26	36	36	26	402			
回収率	82.8%	83.3%	77.3%	90.0%	91.2%	91.1%	126.8%	103.6%	100.0%	100.0%	90.0%	100.0%	86.7%				
分析対象者数	24	23	17	34	30	40	49	29	23	26	30	32	25	382			
有効回収率	82.8%	76.7%	77.3%	85.0%	88.2%	88.9%	119.5%	103.6%	100.0%	100.0%	75.0%	88.9%	83.3%				

	2007				2008				2009				2010				合計
	(年度)	(月)			(年度)	(月)			(年度)	(月)			(年度)	(月)			
MSM除く男性(n)	12	17	8	20	18	22	28	19	13	20	13	16	18	224			
(%)	50.0%	73.9%	47.1%	58.8%	60.0%	55.0%	57.1%	65.5%	56.5%	76.9%	43.3%	50.0%	72.0%	58.6%			
女性(n)	12	3	8	12	11	15	20	7	9	5	16	13	6	137			
(%)	50.0%	13.0%	47.1%	35.3%	36.7%	37.5%	40.8%	24.1%	39.1%	19.2%	53.3%	40.6%	24.0%	35.9%			
その他(n)	0	0	0	0	0	0	0	0	0	0	0	0	0	0			
(%)	0.0%	0.0%	0.0%	0.0%	0.0%	0.0%	0.0%	0.0%	0.0%	0.0%	0.0%	0.0%	0.0%	0.0%			
MSM(n)	0	3	1	2	1	3	1	3	1	1	1	3	1	21			
(%)	0.0%	13.0%	5.9%	5.9%	3.3%	7.5%	2.0%	10.3%	4.3%	3.8%	3.3%	9.4%	4.0%	5.5%			





○ 性別および性指向別の基本属性 (年齢割合・居住地割合)

墨田区本所保健センター

東京

MSM(Men who have sex with men)を除く男性																		
	(年度)	2007				2008				2009				2010				合計
		(月)	1-3	4-6	7-9	10-12	1-3	4-6	7-9	10-12	1-3	4-6	7-9	10-12				
	(計)	12	17	8	20	18	22	28	19	13	20	13	16	18	224			
年齢	24歳以下	0%	18%	13%	10%	17%	23%	14%	21%	15%	10%	0%	6%	11%	13%			
	25-34歳	33%	41%	25%	30%	33%	27%	32%	58%	38%	15%	38%	56%	44%	36%			
	35-44歳	42%	18%	25%	35%	17%	27%	36%	21%	15%	50%	46%	25%	33%	30%			
	45-54歳	8%	6%	0%	20%	17%	5%	4%	0%	8%	10%	8%	13%	11%	8%			
	55歳以上	17%	12%	38%	5%	17%	14%	14%	0%	23%	15%	8%	0%	0%	11%			
	無回答	0%	6%	0%	0%	0%	5%	0%	0%	0%	0%	0%	0%	0%	1%			
居住地	茨城県	0%	6%	0%	0%	0%	0%	0%	0%	0%	0%	0%	0%	0%	0%			
	栃木県	0%	0%	0%	0%	0%	0%	0%	0%	0%	0%	0%	0%	0%	0%			
	群馬県	0%	0%	13%	0%	0%	0%	0%	0%	0%	0%	0%	0%	0%	0%			
	埼玉県	0%	0%	0%	10%	17%	0%	4%	0%	0%	5%	15%	6%	22%	6%			
	千葉県	8%	0%	0%	20%	6%	5%	50%	0%	0%	5%	8%	0%	6%	11%			
	東京都	92%	94%	88%	70%	78%	95%	46%	100%	100%	90%	77%	94%	67%	82%			
	神奈川県	0%	0%	0%	0%	0%	0%	0%	0%	0%	0%	0%	0%	6%	0%			

女性																		
	(年度)	2007				2008				2009				2010				合計
		(月)	1-3	4-6	7-9	10-12	1-3	4-6	7-9	10-12	1-3	4-6	7-9	10-12				
	(計)	12	3	8	12	11	15	20	7	9	5	16	13	6	137			
年齢	24歳以下	8%	67%	38%	25%	36%	13%	25%	29%	22%	20%	44%	15%	50%	27%			
	25-34歳	50%	33%	38%	58%	36%	80%	50%	71%	67%	40%	31%	62%	33%	52%			
	35-44歳	42%	0%	13%	8%	18%	7%	25%	0%	11%	40%	25%	15%	17%	18%			
	45-54歳	0%	0%	0%	8%	9%	0%	0%	0%	0%	0%	0%	8%	0%	2%			
	55歳以上	0%	0%	0%	0%	0%	0%	0%	0%	0%	0%	0%	0%	0%	0%			
	無回答	0%	0%	13%	0%	0%	0%	0%	0%	0%	0%	0%	0%	0%	1%			
居住地	茨城県	0%	0%	0%	0%	0%	0%	5%	0%	0%	0%	0%	0%	0%	1%			
	栃木県	0%	0%	0%	0%	0%	0%	0%	0%	0%	0%	0%	0%	0%	0%			
	群馬県	0%	0%	0%	0%	0%	0%	0%	0%	0%	0%	0%	0%	0%	0%			
	埼玉県	0%	0%	0%	0%	9%	0%	0%	0%	0%	0%	6%	0%	0%	1%			
	千葉県	0%	0%	0%	8%	18%	0%	50%	0%	44%	0%	0%	0%	0%	12%			
	東京都	100%	100%	75%	92%	64%	100%	45%	100%	44%	100%	94%	92%	100%	82%			
	神奈川県	0%	0%	25%	0%	9%	0%	0%	0%	11%	0%	0%	8%	0%	4%			

Men who have sex with men																		
	(年度)	2007				2008				2009				2010				合計
		(月)	1-3	4-6	7-9	10-12	1-3	4-6	7-9	10-12	1-3	4-6	7-9	10-12				
	(計)	0	3	1	2	1	3	1	3	1	1	3	1	21				
年齢	24歳以下	0%	0%	0%	0%	0%	0%	0%	33%	0%	0%	0%	33%	0%	10%			
	25-34歳	0%	67%	100%	50%	100%	67%	0%	0%	0%	100%	0%	33%	0%	43%			
	35-44歳	0%	0%	0%	50%	0%	33%	100%	0%	100%	0%	100%	0%	0%	24%			
	45-54歳	0%	33%	0%	0%	0%	0%	0%	67%	0%	0%	0%	33%	100%	24%			
	55歳以上	0%	0%	0%	0%	0%	0%	0%	0%	0%	0%	0%	0%	0%	0%			
	無回答	0%	0%	0%	0%	0%	0%	0%	0%	0%	0%	0%	0%	0%	0%			
居住地	茨城県	0%	33%	0%	0%	0%	33%	0%	0%	0%	0%	0%	0%	0%	10%			
	栃木県	0%	0%	0%	0%	0%	0%	0%	0%	0%	0%	0%	0%	0%	0%			
	群馬県	0%	0%	0%	0%	0%	0%	0%	0%	0%	0%	0%	0%	0%	0%			
	埼玉県	0%	0%	0%	0%	0%	0%	0%	0%	0%	0%	0%	0%	0%	0%			
	千葉県	0%	0%	0%	0%	0%	0%	0%	33%	0%	0%	0%	0%	0%	5%			
	東京都	0%	67%	100%	100%	100%	67%	100%	67%	100%	100%	100%	100%	100%	86%			
	神奈川県	0%	0%	0%	0%	0%	0%	0%	0%	0%	0%	0%	0%	0%	0%			

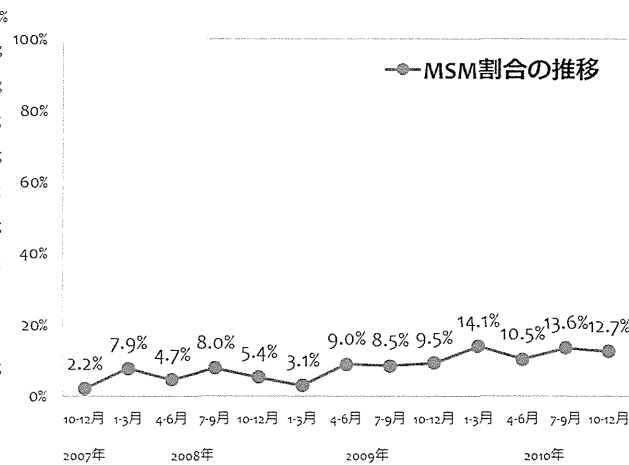
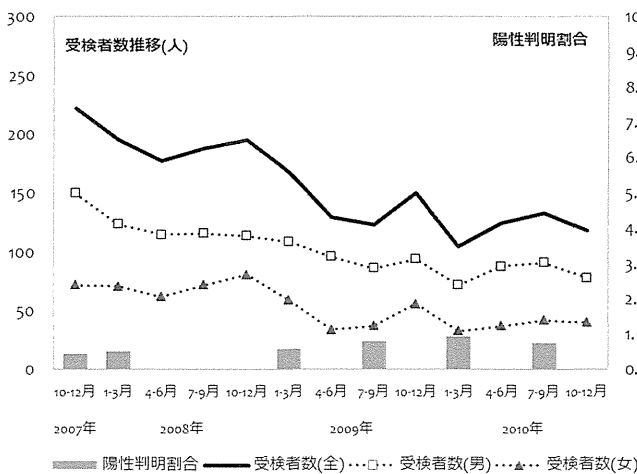
首都圏(保健所)

葛飾区保健所

	(年度)	2007				2008				2009				2010				合計
	(月)	1-3	4-6	7-9	10-12	1-3	4-6	7-9	10-12	1-3	4-6	7-9	10-12	1-3	4-6	7-9	10-12	
男性受検者数		150	124	115	116	114	109	96	86	94	72	88	91	78	1333			
男性陽性者数		1	1	0	0	0	1	0	1	0	1	0	1	0	6			
女性受検者数		72	71	62	72	81	59	34	37	56	33	37	42	40	696			
女性陽性者数		0	0	0	0	0	0	0	0	0	0	0	0	0	0			
その他受検者数		0	0	0	0	0	0	0	0	0	0	0	0	0	0			
その他陽性者数		0	0	0	0	0	0	0	0	0	0	0	0	0	0			
受検者計		222	195	177	188	195	168	130	123	150	105	125	133	118	2029			
陽性者計		1	1	0	0	0	1	0	1	0	1	0	1	0	6			
陽性判明割合(男)		0.67%	0.81%	0.00%	0.00%	0.00%	0.92%	0.00%	1.16%	0.00%	1.39%	0.00%	1.10%	0.00%	0.45%			
陽性判明割合(女)		0.00%	0.00%	0.00%	0.00%	0.00%	0.00%	0.00%	0.00%	0.00%	0.00%	0.00%	0.00%	0.00%	0.00%			
陽性判明割合(全)		0.45%	0.51%	0.00%	0.00%	0.00%	0.60%	0.00%	0.81%	0.00%	0.95%	0.00%	0.75%	0.00%	0.30%			

	(年度)	2007				2008				2009				2010				合計
	(月)	1-3	4-6	7-9	10-12	1-3	4-6	7-9	10-12	1-3	4-6	7-9	10-12	1-3	4-6	7-9	10-12	
回収数		142	194	175	186	193	166	128	123	150	105	118	131	106	1917			
回収率		64.0%	99.5%	98.9%	98.9%	99.0%	98.8%	98.5%	100.0%	100.0%	100.0%	94.4%	98.5%	89.8%				
分析対象者数		136	189	169	176	184	160	122	117	148	99	114	125	102	1841			
有効回収率		61.3%	96.9%	95.5%	93.6%	94.4%	95.2%	93.8%	95.1%	98.7%	94.3%	91.2%	94.0%	86.4%				

	(年度)	2007				2008				2009				2010				合計
	(月)	1-3	4-6	7-9	10-12	1-3	4-6	7-9	10-12	1-3	4-6	7-9	10-12	1-3	4-6	7-9	10-12	
MSM除く男性(n)		83	103	102	95	99	99	79	70	78	52	67	67	52	1046			
(%)		61.0%	54.5%	60.4%	54.0%	53.8%	61.9%	64.8%	59.8%	52.7%	52.5%	58.8%	53.6%	51.0%	56.8%			
女性(n)		50	71	59	67	75	56	32	36	56	33	35	40	37	647			
(%)		36.8%	37.6%	34.9%	38.1%	40.8%	35.0%	26.2%	30.8%	37.8%	33.3%	30.7%	32.0%	36.3%	35.1%			
その他(n)		0	0	0	0	0	0	0	1	0	0	0	1	0	2			
(%)		0.0%	0.0%	0.0%	0.0%	0.0%	0.0%	0.0%	0.9%	0.0%	0.0%	0.0%	0.8%	0.0%	0.1%			
MSM(n)		3	15	8	14	10	5	11	10	14	14	12	17	13	146			
(%)		2.2%	7.9%	4.7%	8.0%	5.4%	3.1%	9.0%	8.5%	9.5%	14.1%	10.5%	13.6%	12.7%				



○ 性別および性指向別の基本属性 (年齢割合・居住地割合)

葛飾区保健所

東京

MSM(Men who have sex with men)を除く男性

	(年度)	2007				2008				2009				2010				合計
		(月)																
			1-3	4-6	7-9	10-12	1-3	4-6	7-9	10-12	1-3	4-6	7-9	10-12				
	(計)	83	103	102	95	99	99	79	70	78	52	67	67	52	1046			
年齢	24歳以下	20%	18%	13%	15%	19%	18%	8%	13%	10%	17%	13%	19%	15%	15%			
	25-34歳	39%	42%	34%	41%	43%	34%	47%	37%	41%	33%	46%	45%	44%	40%			
	35-44歳	29%	28%	37%	21%	21%	32%	25%	31%	28%	35%	22%	25%	29%	28%			
	45-54歳	6%	6%	11%	9%	13%	6%	11%	9%	10%	10%	9%	6%	6%	9%			
	55歳以上	5%	5%	4%	14%	3%	9%	6%	9%	10%	6%	9%	3%	6%	7%			
	無回答	1%	1%	1%	0%	0%	0%	3%	1%	0%	0%	0%	1%	0%	1%			
居住地	茨城県	0%	2%	2%	0%	1%	1%	0%	1%	0%	0%	1%	0%	2%	1%			
	栃木県	0%	0%	0%	0%	0%	0%	0%	0%	0%	0%	0%	0%	0%	0%			
	群馬県	0%	0%	0%	0%	0%	0%	0%	0%	0%	0%	0%	0%	0%	0%			
	埼玉県	5%	1%	5%	1%	7%	8%	4%	7%	8%	6%	1%	6%	12%	5%			
	千葉県	14%	13%	9%	14%	15%	15%	13%	6%	13%	10%	12%	6%	4%	11%			
	東京都	78%	82%	83%	83%	76%	74%	82%	81%	77%	81%	85%	85%	83%	80%			
	神奈川県	2%	3%	1%	2%	1%	2%	1%	4%	3%	4%	0%	3%	0%	2%			

女性

	(年度)	2007				2008				2009				2010				合計
		(月)																
			1-3	4-6	7-9	10-12	1-3	4-6	7-9	10-12	1-3	4-6	7-9	10-12				
	(計)	50	71	59	67	75	56	32	36	56	33	35	40	37	647			
年齢	24歳以下	26%	32%	37%	27%	28%	27%	13%	33%	18%	24%	40%	38%	41%	29%			
	25-34歳	56%	39%	46%	48%	47%	43%	59%	33%	55%	45%	40%	43%	32%	45%			
	35-44歳	12%	14%	12%	22%	20%	23%	22%	25%	18%	18%	17%	10%	14%	17%			
	45-54歳	2%	6%	3%	1%	3%	2%	3%	6%	4%	9%	3%	5%	8%	4%			
	55歳以上	2%	3%	2%	1%	3%	4%	3%	3%	4%	0%	0%	5%	3%	2%			
	無回答	2%	6%	0%	0%	0%	2%	0%	0%	2%	3%	0%	0%	3%	1%			
居住地	茨城県	0%	1%	0%	0%	0%	0%	0%	0%	0%	3%	0%	0%	0%	0%			
	栃木県	0%	1%	0%	0%	1%	0%	0%	0%	0%	0%	0%	0%	0%	0%			
	群馬県	0%	0%	0%	0%	0%	0%	0%	0%	0%	0%	0%	0%	0%	0%			
	埼玉県	4%	4%	7%	3%	0%	5%	6%	0%	7%	6%	6%	3%	3%	4%			
	千葉県	6%	10%	15%	9%	13%	7%	3%	11%	9%	12%	6%	10%	0%	9%			
	東京都	86%	82%	78%	82%	84%	86%	91%	89%	82%	79%	86%	88%	97%	85%			
	神奈川県	4%	1%	0%	6%	1%	2%	0%	0%	2%	0%	3%	0%	0%	2%			

Men who have sex with men

	(年度)	2007				2008				2009				2010				合計
		(月)																
			1-3	4-6	7-9	10-12	1-3	4-6	7-9	10-12	1-3	4-6	7-9	10-12				
	(計)	3	15	8	14	10	5	11	10	14	14	12	17	13	146			
年齢	24歳以下	33%	40%	63%	43%	10%	20%	9%	40%	29%	14%	42%	12%	31%	29%			
	25-34歳	33%	40%	25%	29%	40%	20%	55%	30%	29%	29%	17%	35%	23%	32%			
	35-44歳	33%	20%	13%	21%	50%	60%	27%	20%	43%	29%	33%	47%	31%	32%			
	45-54歳	0%	0%	0%	7%	0%	0%	9%	10%	0%	14%	8%	6%	15%	6%			
	55歳以上	0%	0%	0%	0%	0%	0%	0%	0%	0%	14%	0%	0%	0%	1%			
	無回答	0%	0%	0%	0%	0%	0%	0%	0%	0%	0%	0%	0%	0%	0%			
居住地	茨城県	0%	7%	13%	0%	0%	0%	0%	0%	0%	0%	8%	0%	0%	2%			
	栃木県	0%	0%	0%	0%	0%	0%	0%	0%	0%	0%	0%	0%	0%	0%			
	群馬県	0%	0%	0%	0%	0%	0%	0%	0%	0%	0%	0%	0%	0%	0%			
	埼玉県	0%	7%	13%	14%	0%	20%	0%	0%	7%	0%	8%	12%	0%	6%			
	千葉県	0%	20%	0%	14%	30%	0%	9%	30%	0%	7%	8%	12%	15%	12%			
	東京都	100%	67%	63%	71%	60%	80%	73%	70%	93%	93%	67%	76%	77%	75%			
	神奈川県	0%	0%	13%	0%	10%	0%	18%	0%	0%	0%	8%	0%	8%	4%			

首都圏(保健所)

中野区保健所

	(年度)	2007				2008				2009				2010				合計
	(月)	1-3	4-6	7-9	10-12	1-3	4-6	7-9	10-12	1-3	4-6	7-9	10-12	1-3	4-6	7-9	10-12	
男性受検者数	46	42	54	46	71	40	40	73	63	44	92	77	102	790				
男性陽性者数	0	1	0	0	0	0	0	0	0	0	2	0	3	6				
女性受検者数	37	28	58	29	58	30	40	69	29	49	73	41	67	608				
女性陽性者数	0	0	0	0	0	0	0	0	0	0	0	0	0	0				
その他受検者数	0	0	0	0	0	0	0	0	0	0	0	0	0	0				
その他陽性者数	0	0	0	0	0	0	0	0	0	0	0	0	0	0				
受検者計	83	70	112	75	129	70	80	142	92	93	165	118	169	1398				
陽性者計	0	1	0	0	0	0	0	0	0	0	2	0	3	6				
陽性判明割合(男)	0.00%	2.38%	0.00%	0.00%	0.00%	0.00%	0.00%	0.00%	0.00%	0.00%	2.17%	0.00%	2.94%	0.76%				
陽性判明割合(女)	0.00%	0.00%	0.00%	0.00%	0.00%	0.00%	0.00%	0.00%	0.00%	0.00%	0.00%	0.00%	0.00%	0.00%				
陽性判明割合(全)	0.00%	1.43%	0.00%	0.00%	0.00%	0.00%	0.00%	0.00%	0.00%	0.00%	1.21%	0.00%	1.78%	0.43%				

	(年度)	2007				2008				2009				2010				合計
	(月)	1-3	4-6	7-9	10-12	1-3	4-6	7-9	10-12	1-3	4-6	7-9	10-12	1-3	4-6	7-9	10-12	
回収数	71	70	88	73	111	66	77	137	89	95	151	102	160	1290				
回収率	85.5%	100.0%	78.6%	97.3%	86.0%	94.3%	96.3%	96.5%	96.7%	102.2%	91.5%	86.4%	94.7%					
分析対象者数	68	70	85	70	108	58	74	126	88	88	144	95	155	1229				
有効回収率	81.9%	100.0%	75.9%	93.3%	83.7%	82.9%	92.5%	88.7%	95.7%	94.6%	87.3%	80.5%	91.7%					

	(年度)	2007				2008				2009				2010				合計
	(月)	1-3	4-6	7-9	10-12	1-3	4-6	7-9	10-12	1-3	4-6	7-9	10-12	1-3	4-6	7-9	10-12	
MSM除く男性(n)	32	33	37	37	51	29	31	57	41	36	52	40	60	536				
(%)	47.1%	47.1%	43.5%	52.9%	47.2%	50.0%	41.9%	45.2%	46.6%	40.9%	36.1%	42.1%	38.7%	43.6%				
女性(n)	29	28	40	29	47	27	38	60	28	46	65	33	64	534				
(%)	42.6%	40.0%	47.1%	41.4%	43.5%	46.6%	51.4%	47.6%	31.8%	52.3%	45.1%	34.7%	41.3%	43.4%				
その他(n)	0	0	0	0	0	0	0	1	0	0	0	0	0	1				
(%)	0.0%	0.0%	0.0%	0.0%	0.0%	0.0%	0.0%	0.8%	0.0%	0.0%	0.0%	0.0%	0.0%	0.1%				
MSM(n)	7	9	8	4	10	2	5	8	19	6	27	22	31	158				
(%)	10.3%	12.9%	9.4%	5.7%	9.3%	3.4%	6.8%	6.3%	21.6%	6.8%	18.8%	23.2%	20.0%	12.9%				

