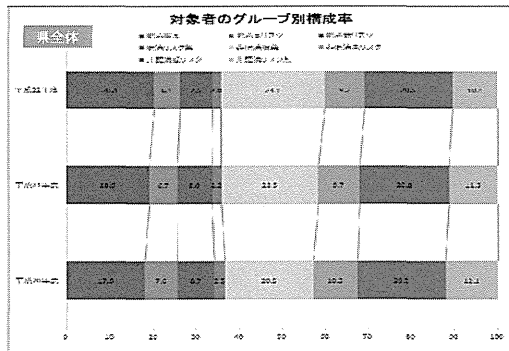
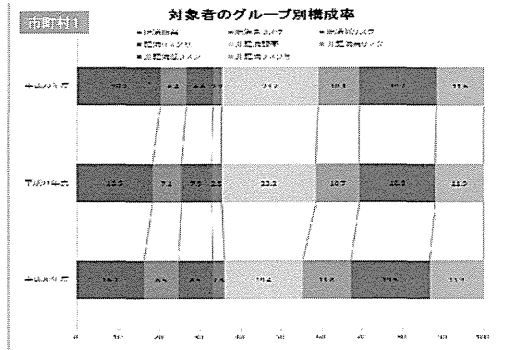
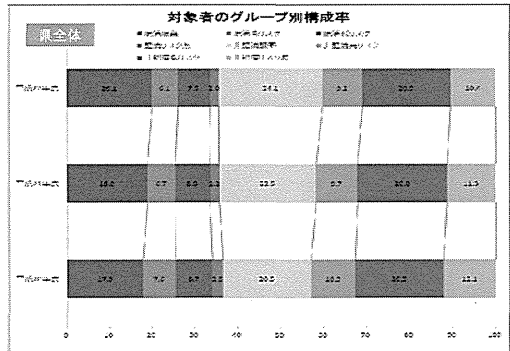
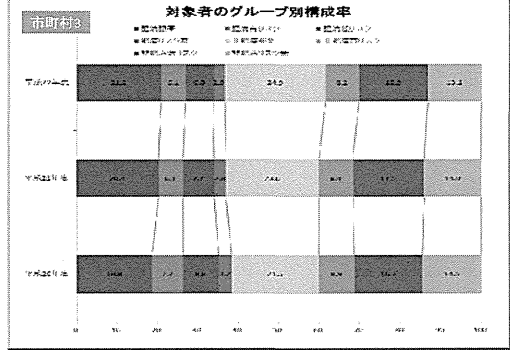


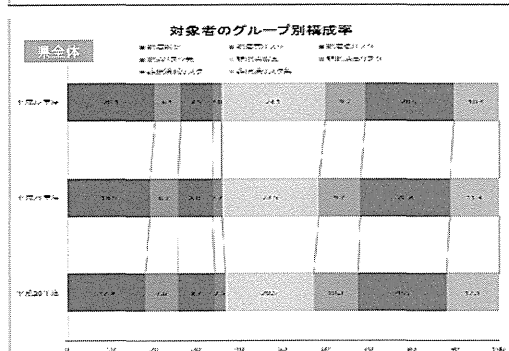
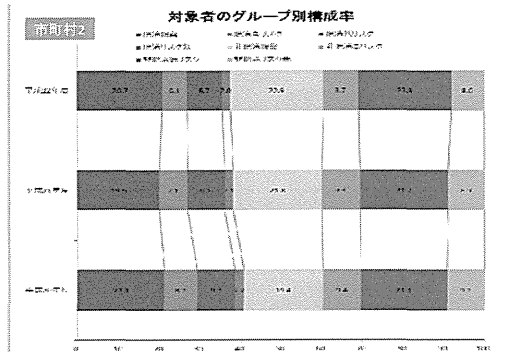
資料2: 地域における集団特性の可視化



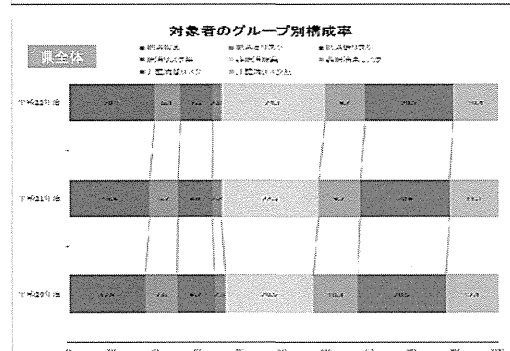
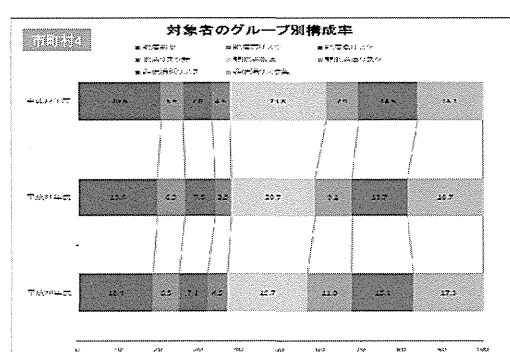
1



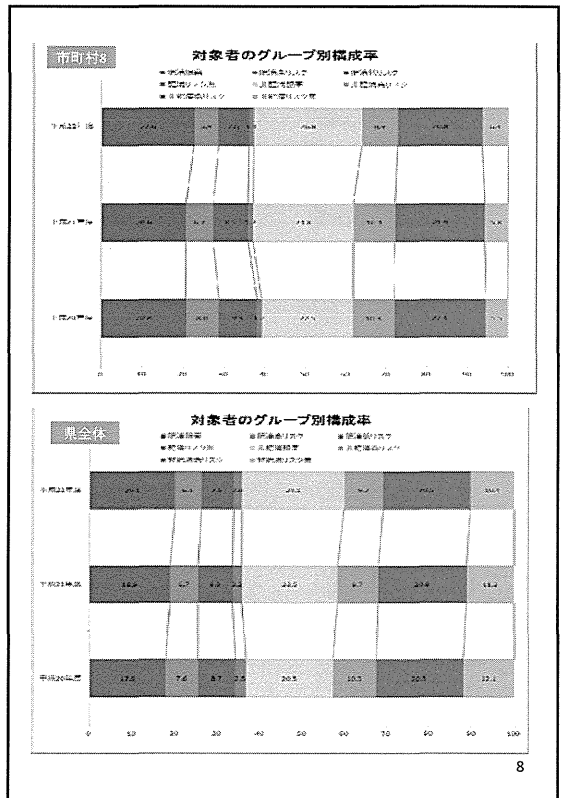
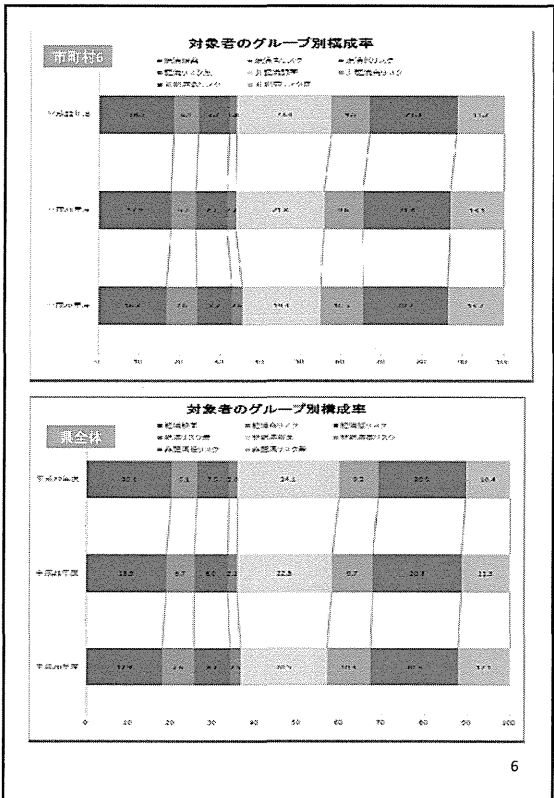
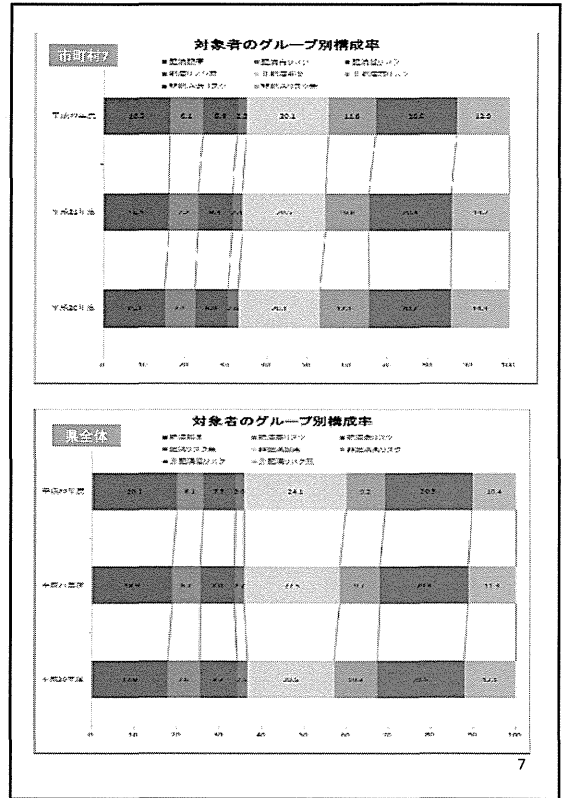
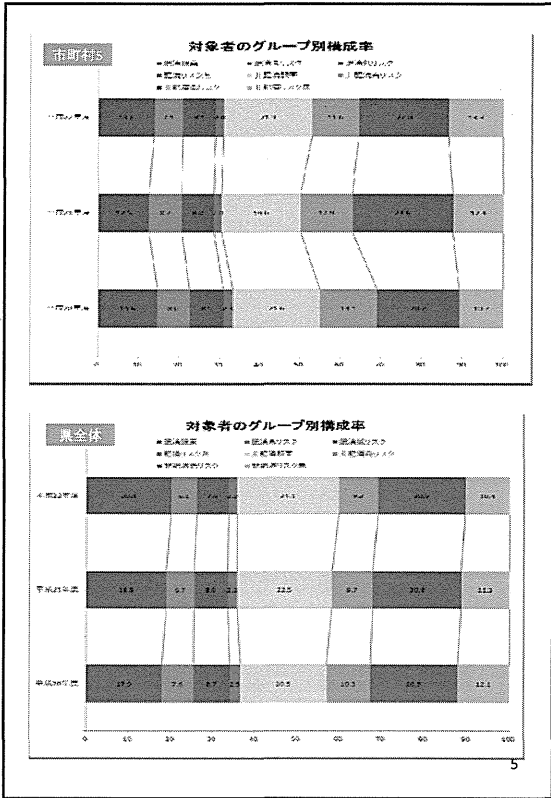
3

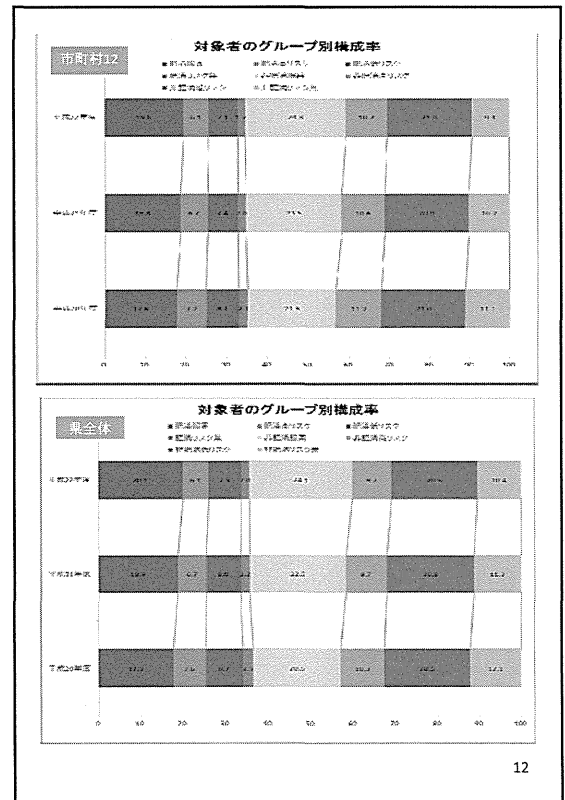
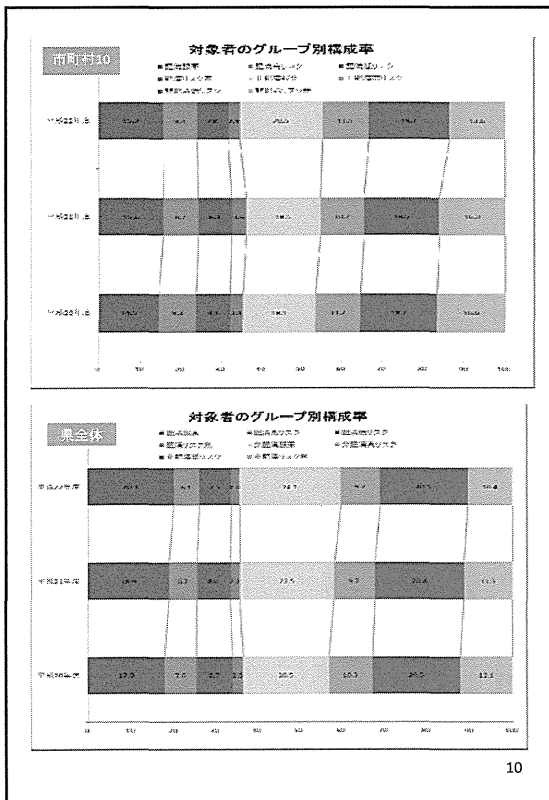
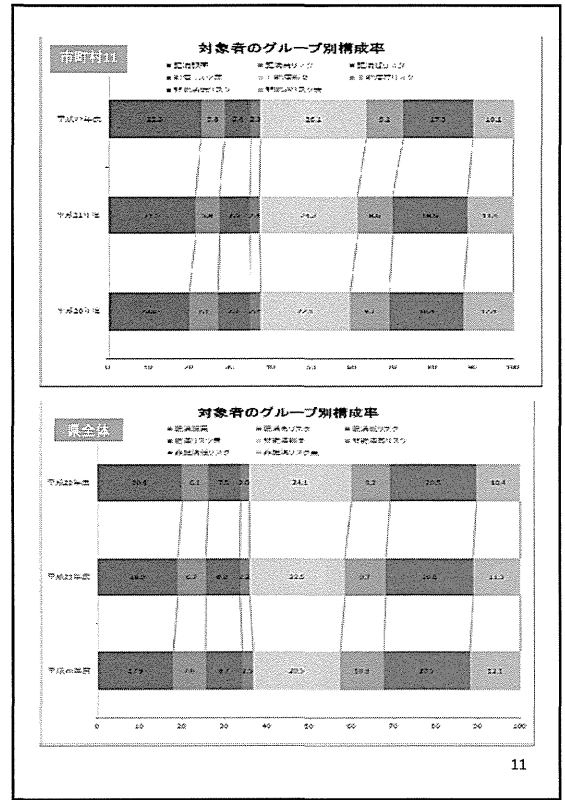
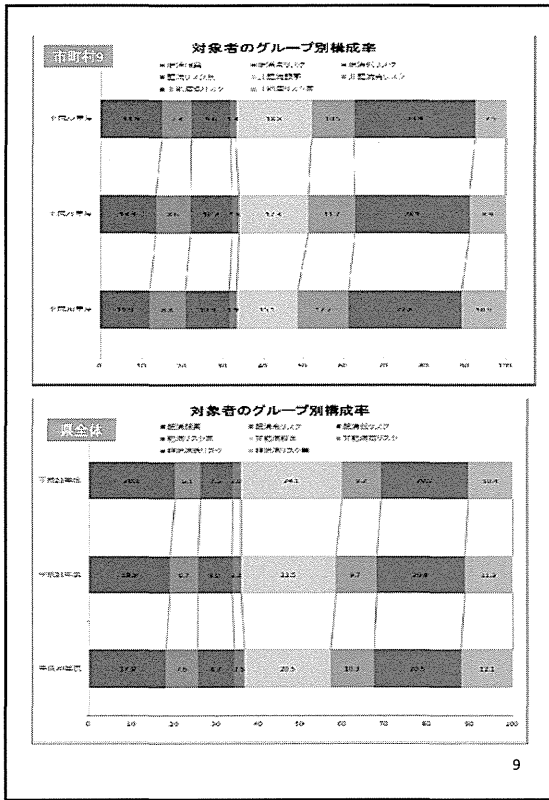


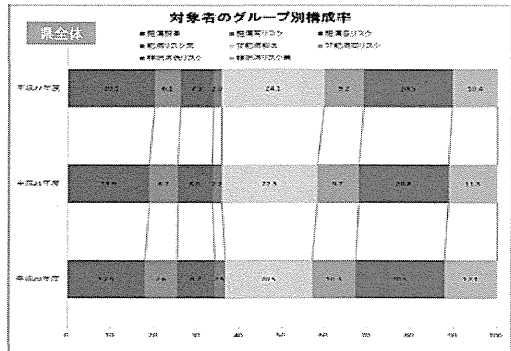
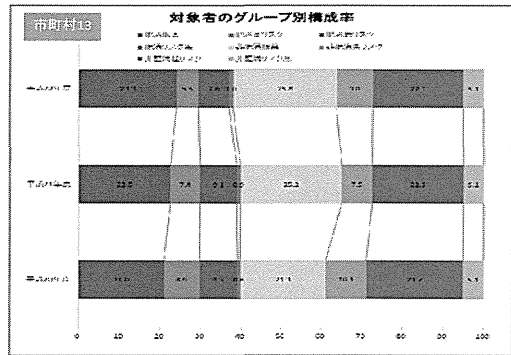
2



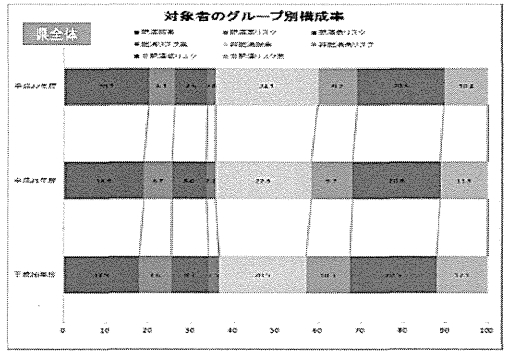
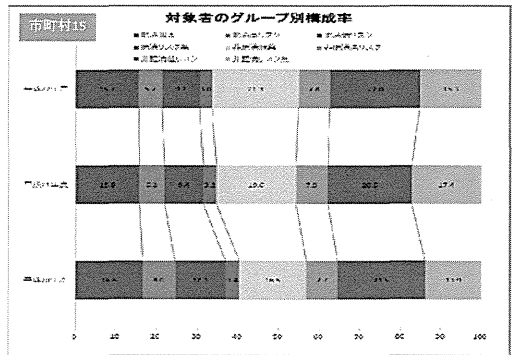
4



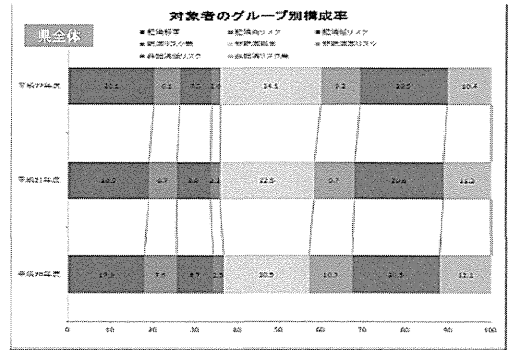
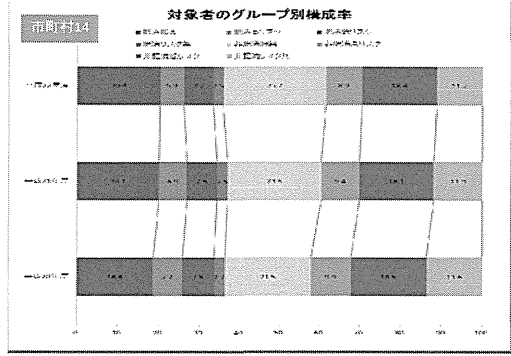




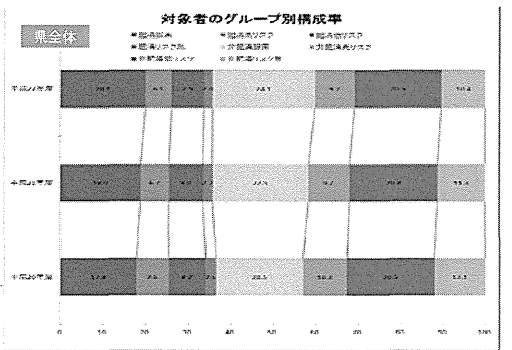
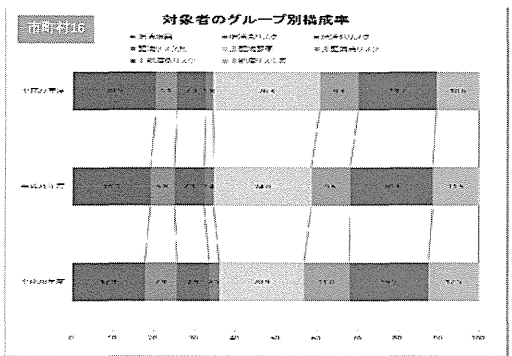
13



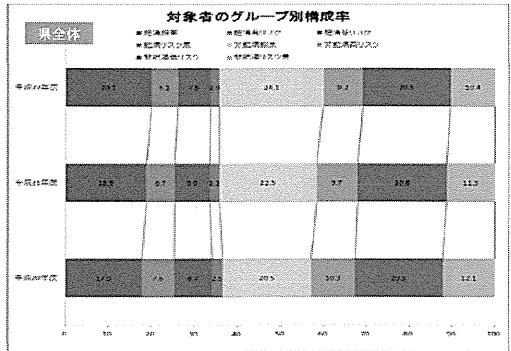
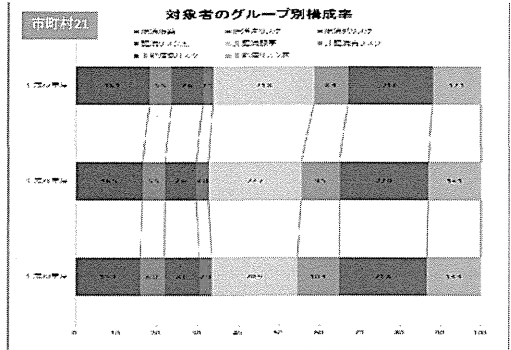
15



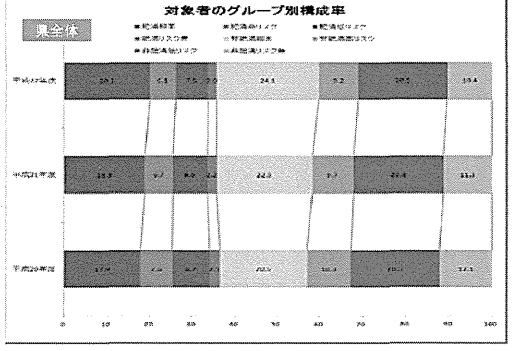
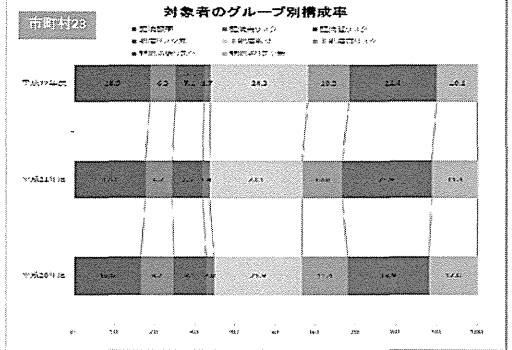
14



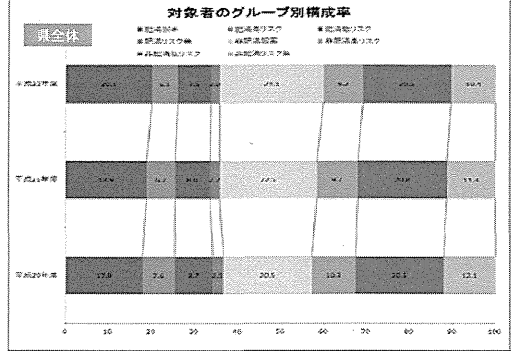
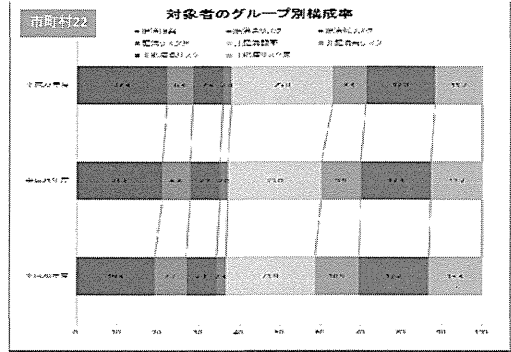
16



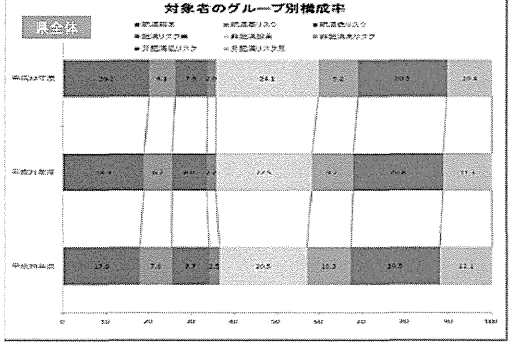
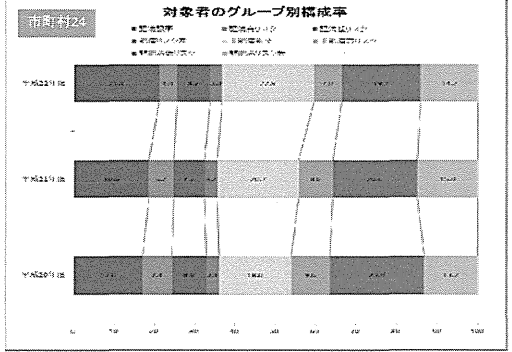
21



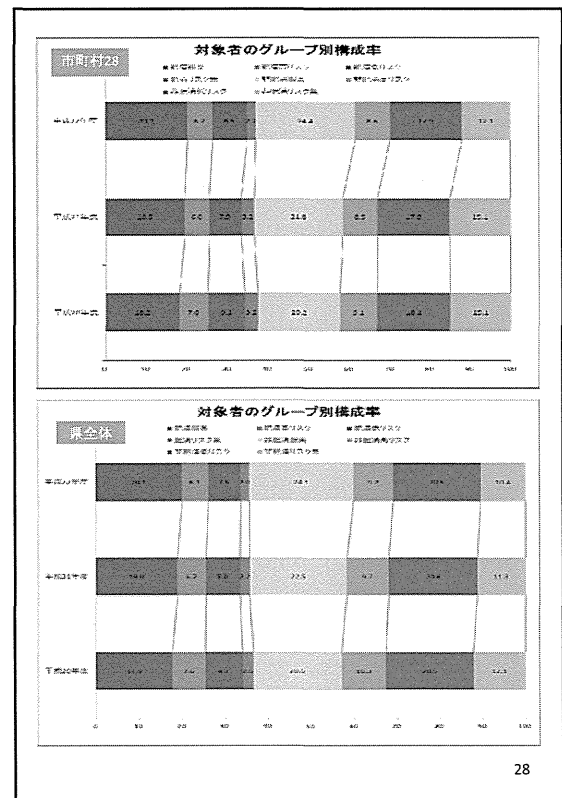
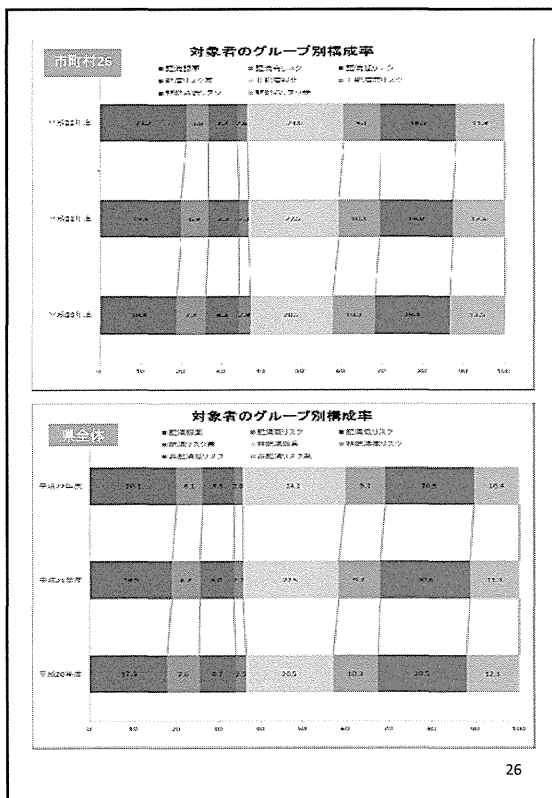
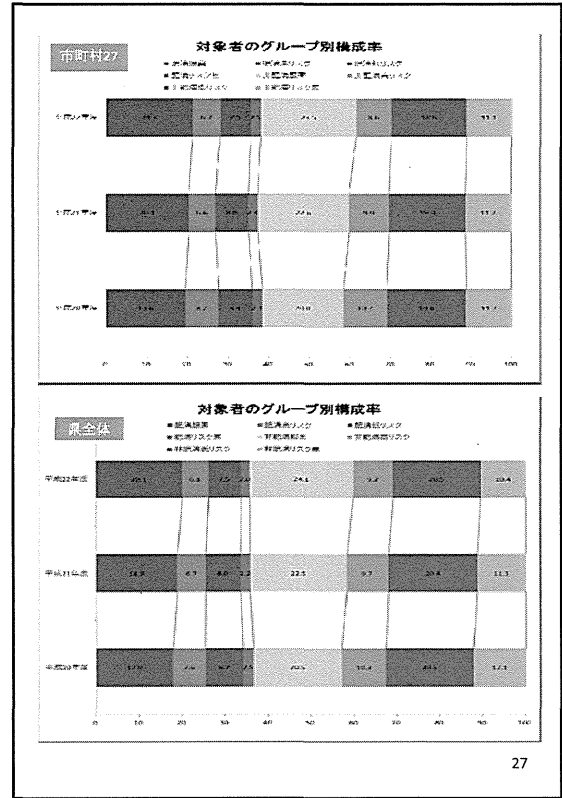
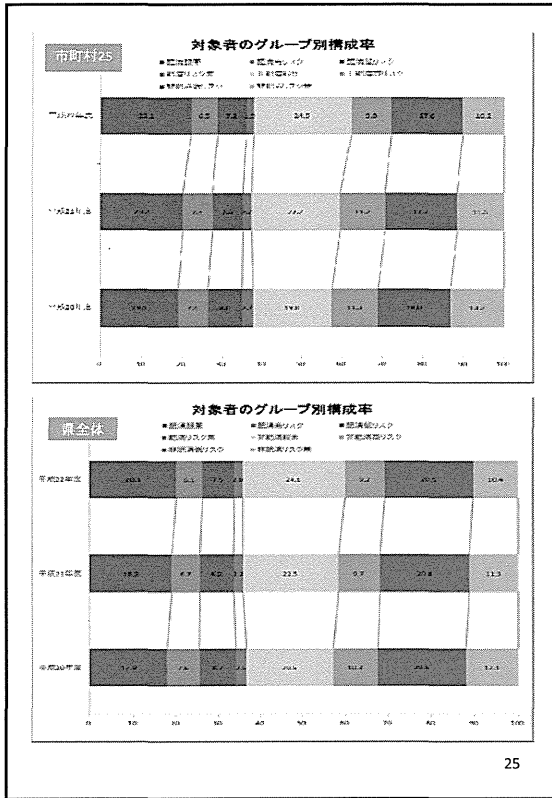
23

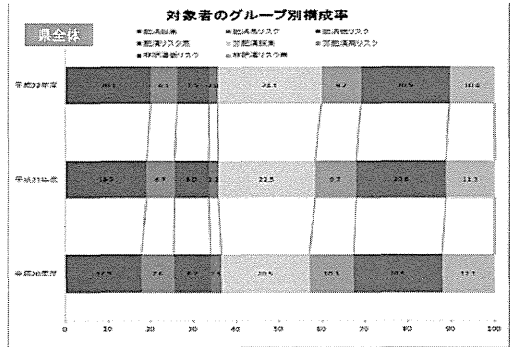
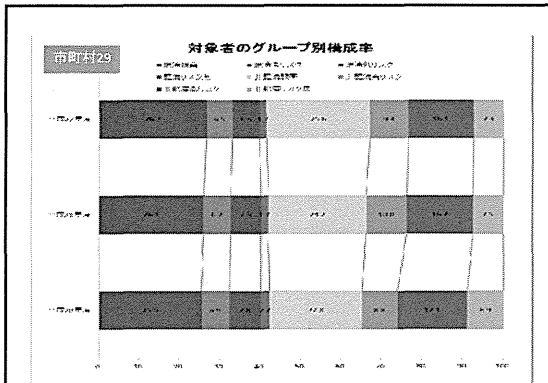


22

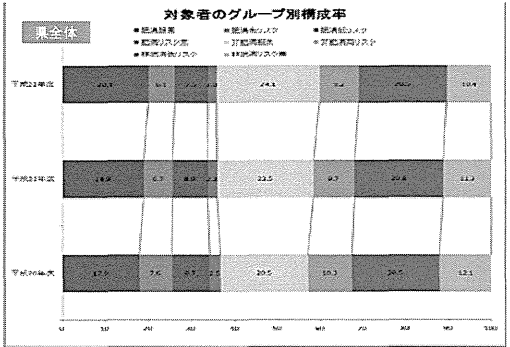
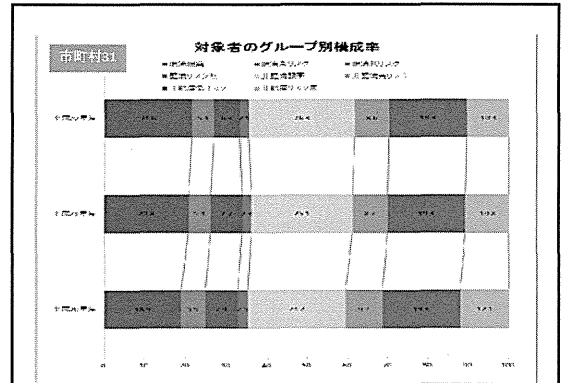


24

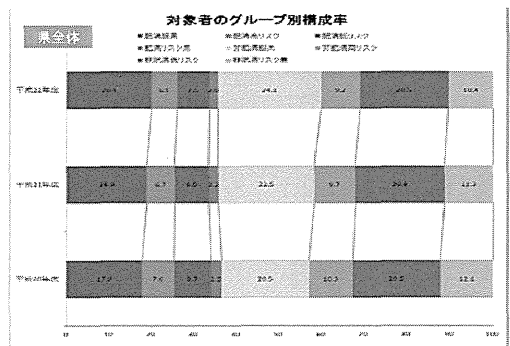
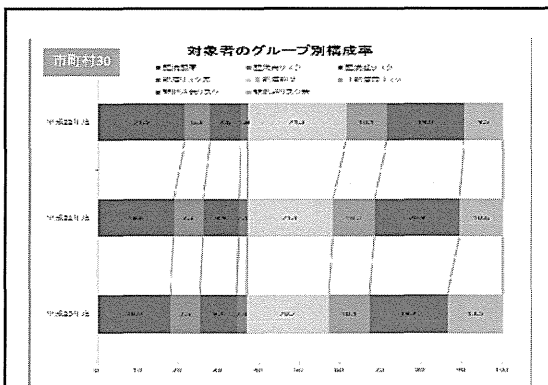




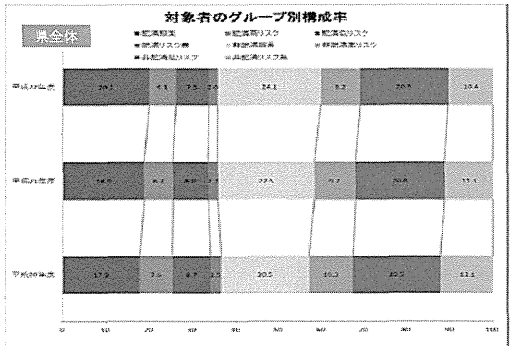
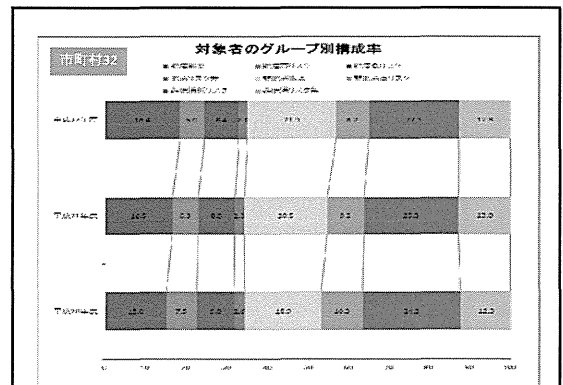
29



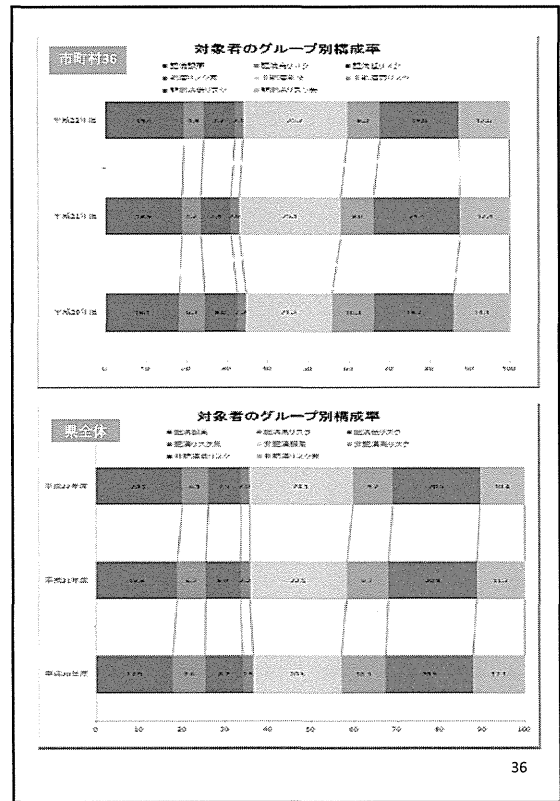
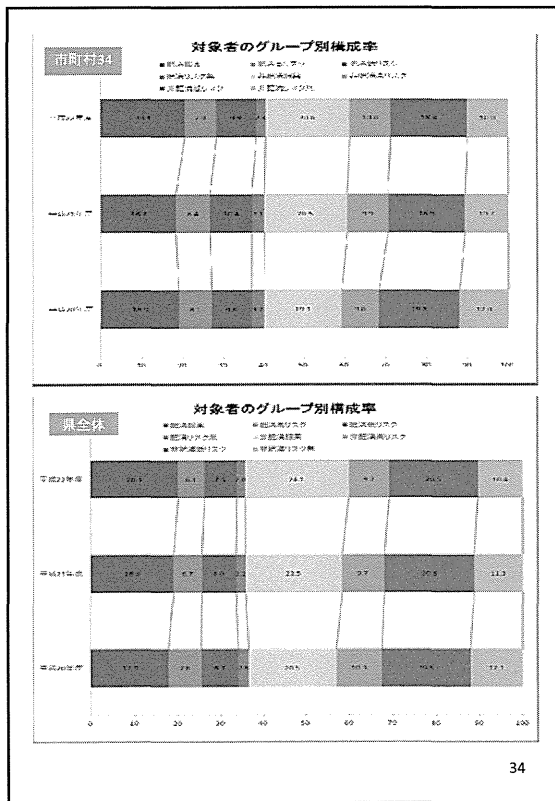
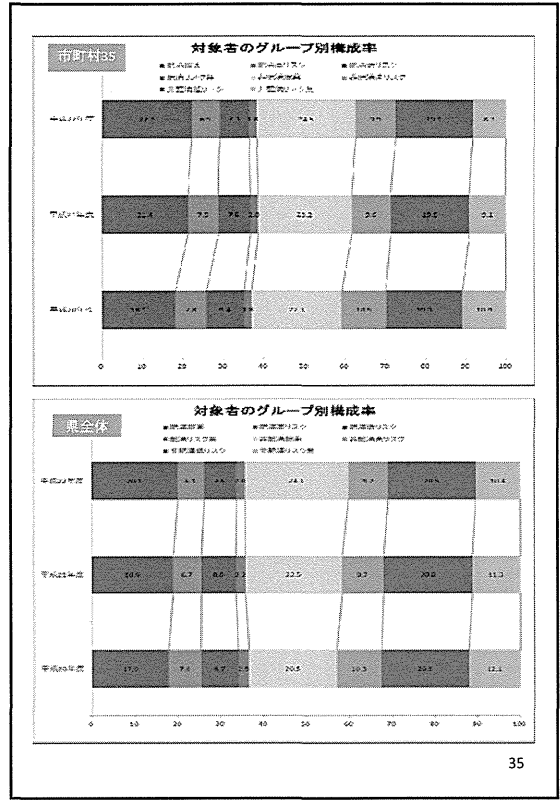
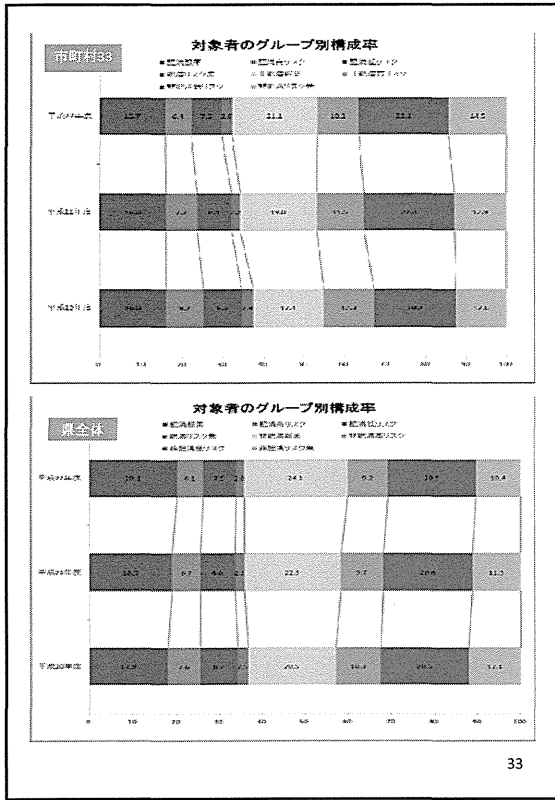
31

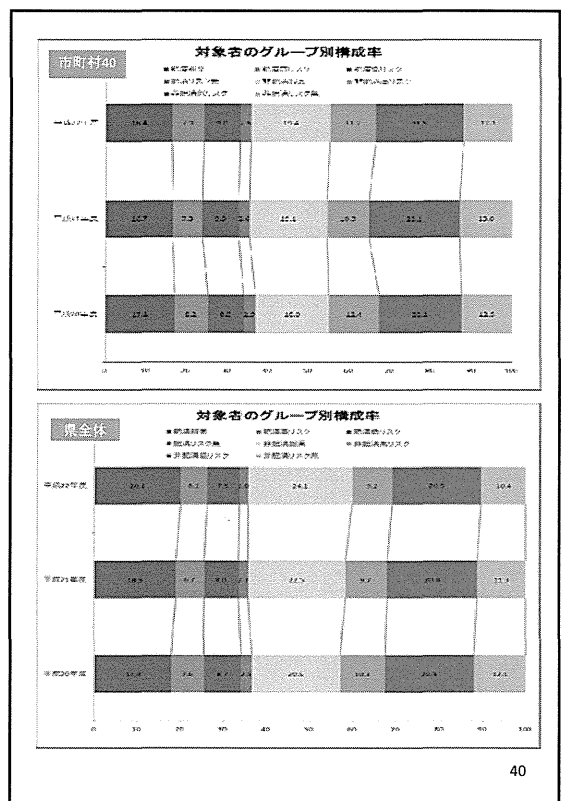
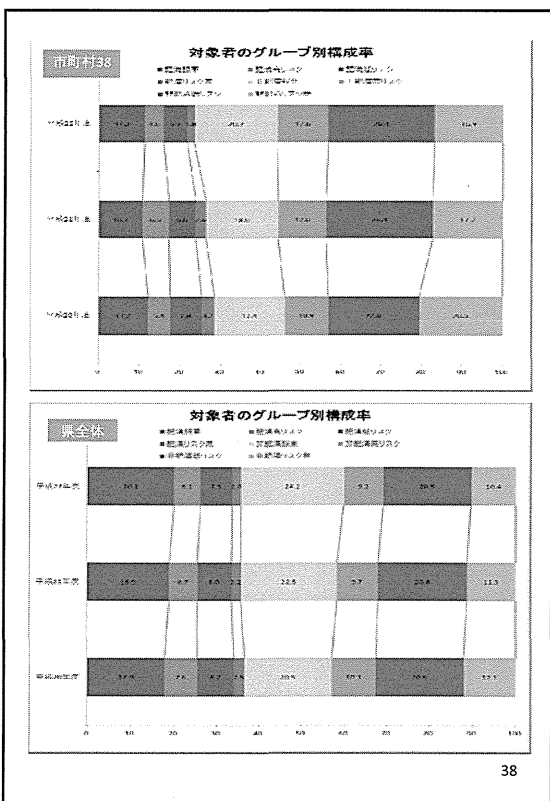
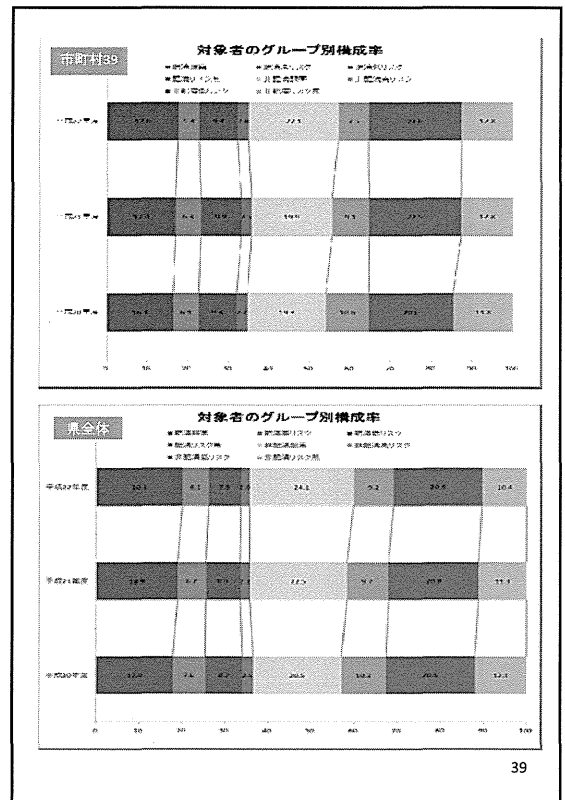
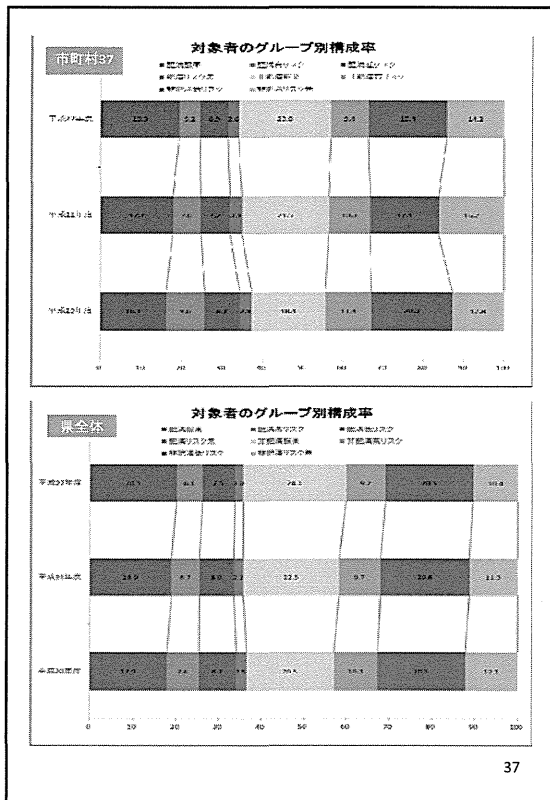


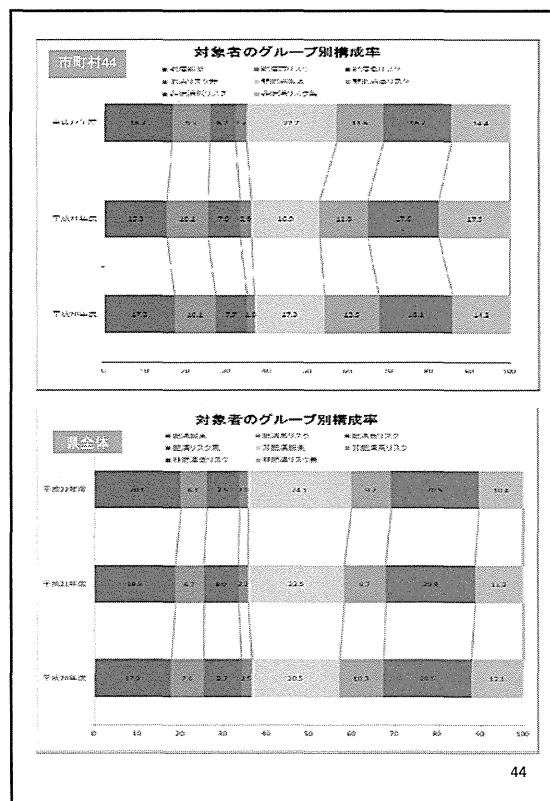
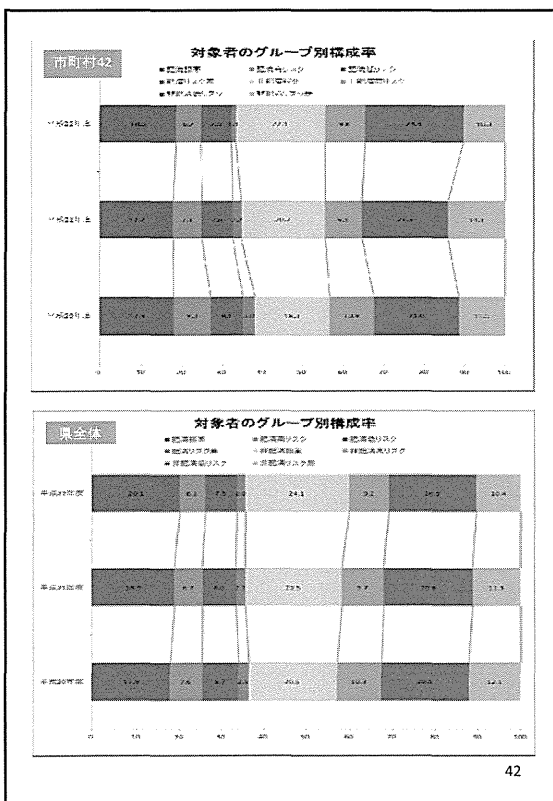
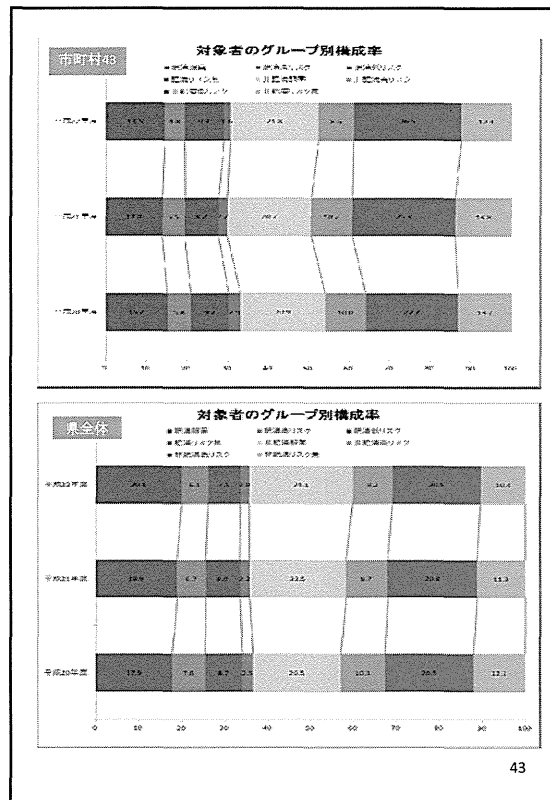
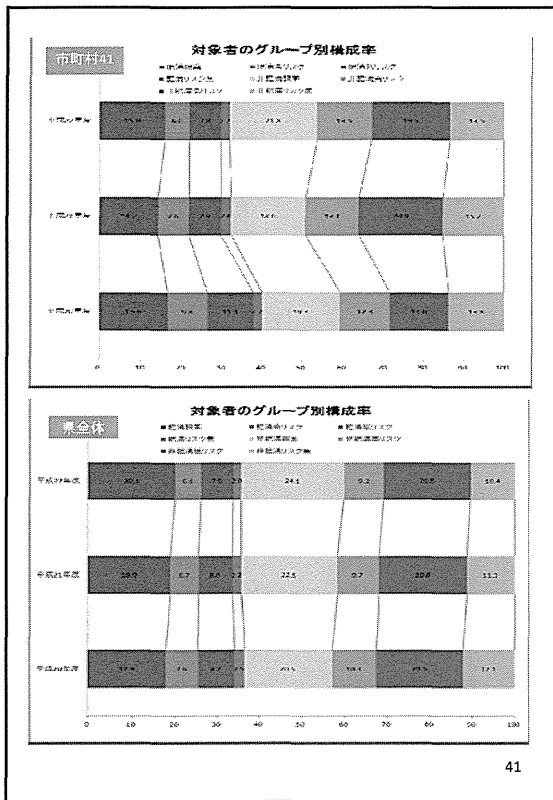
30

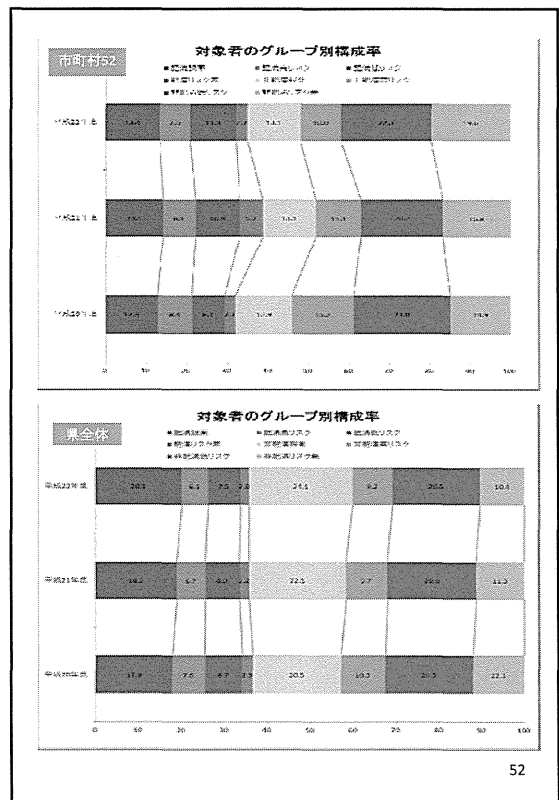
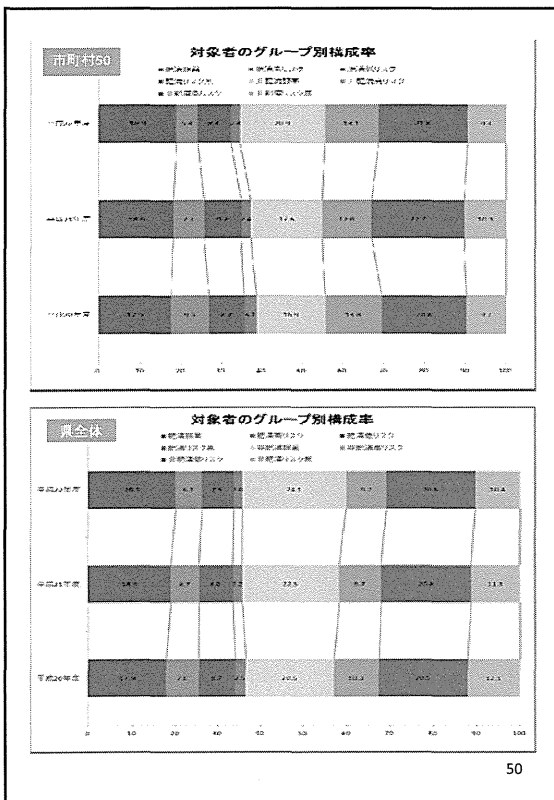
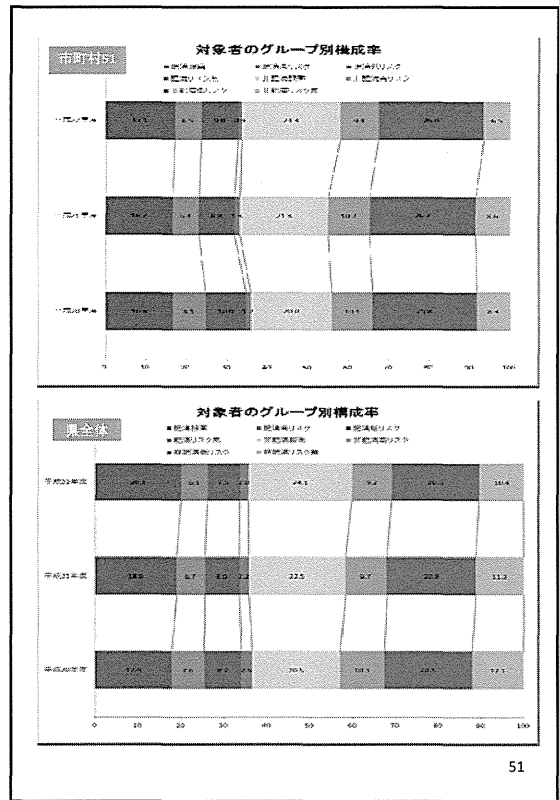
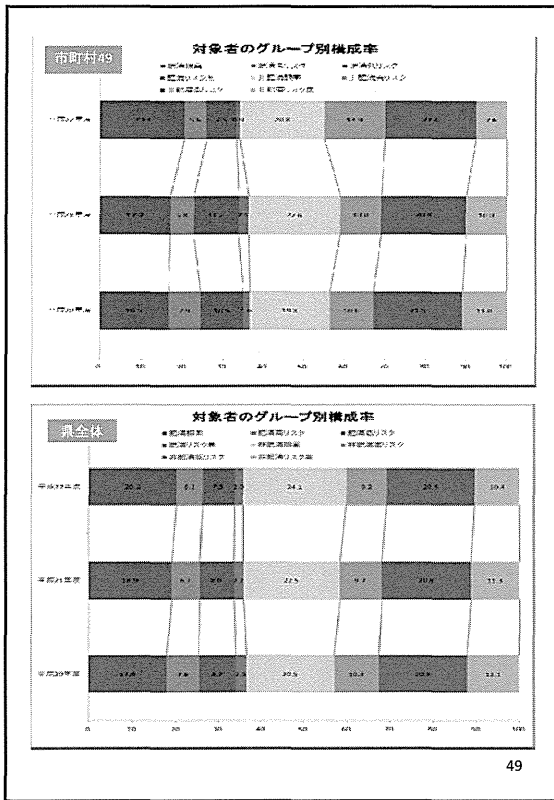


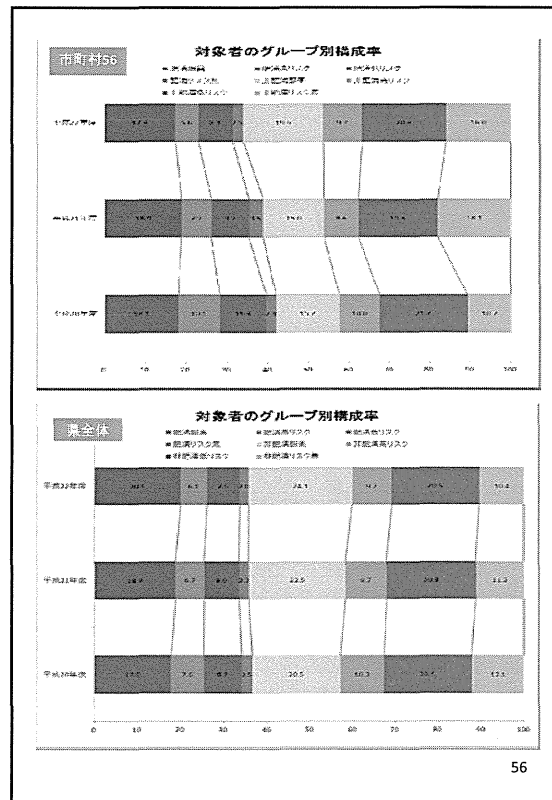
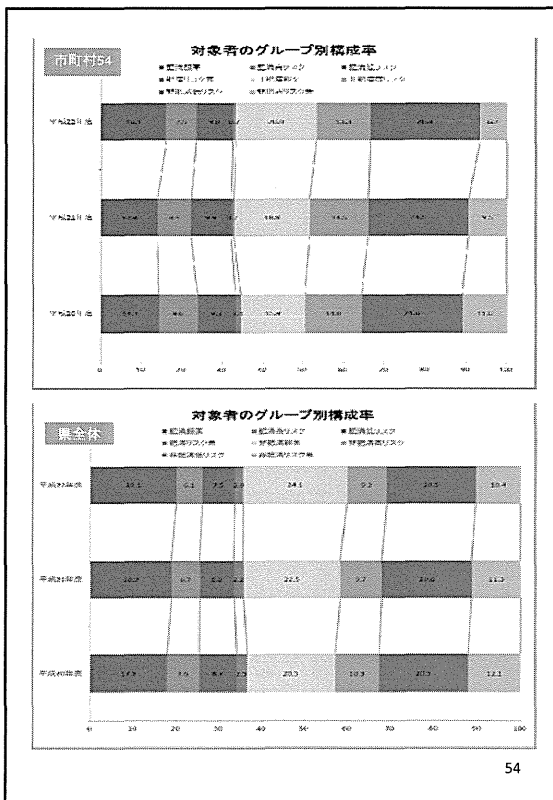
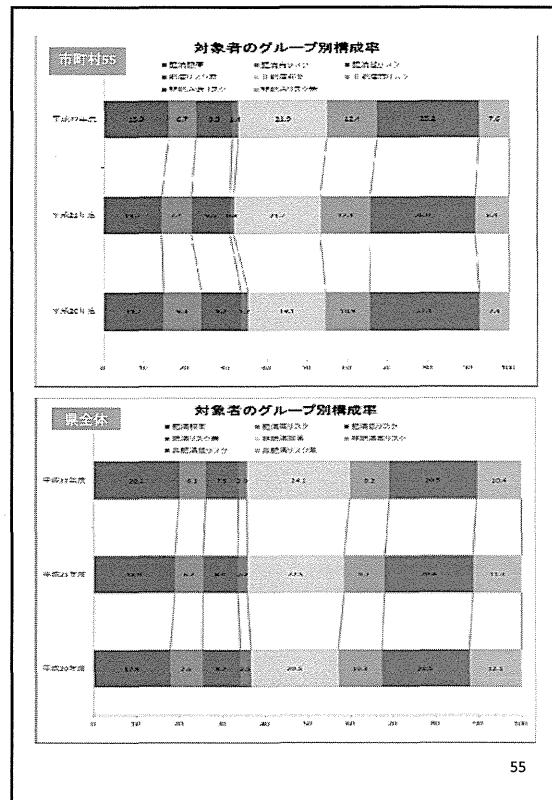
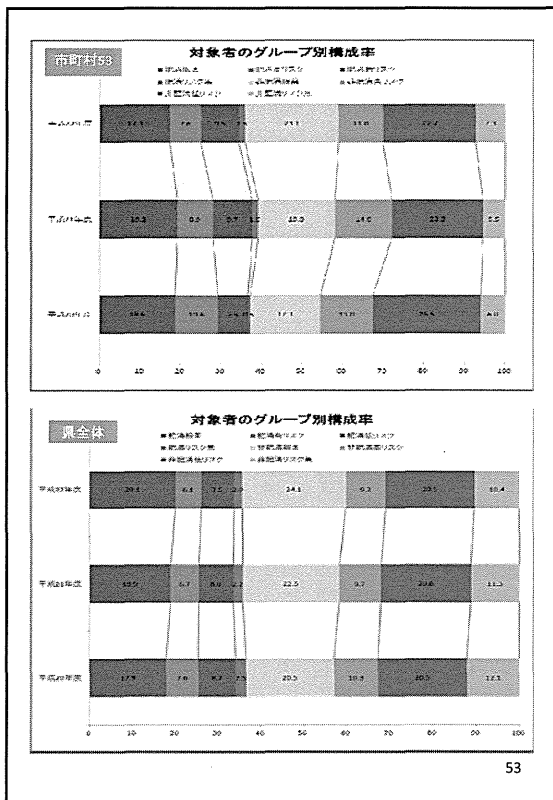
32

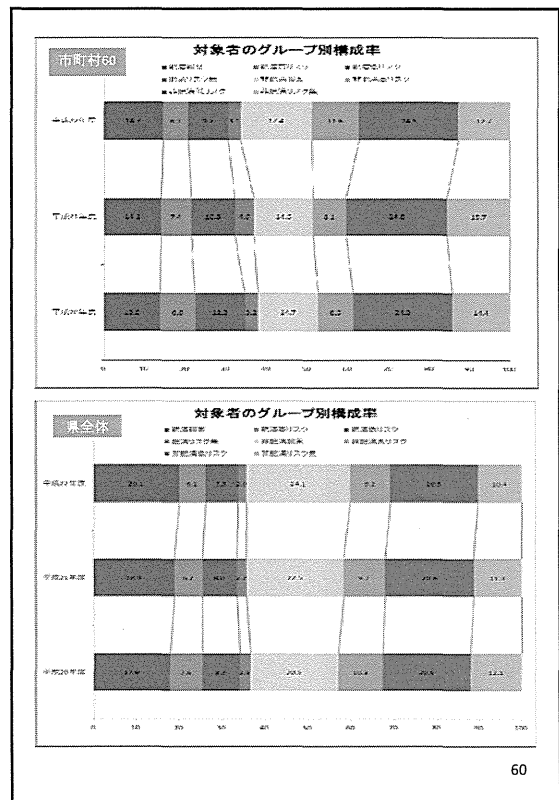
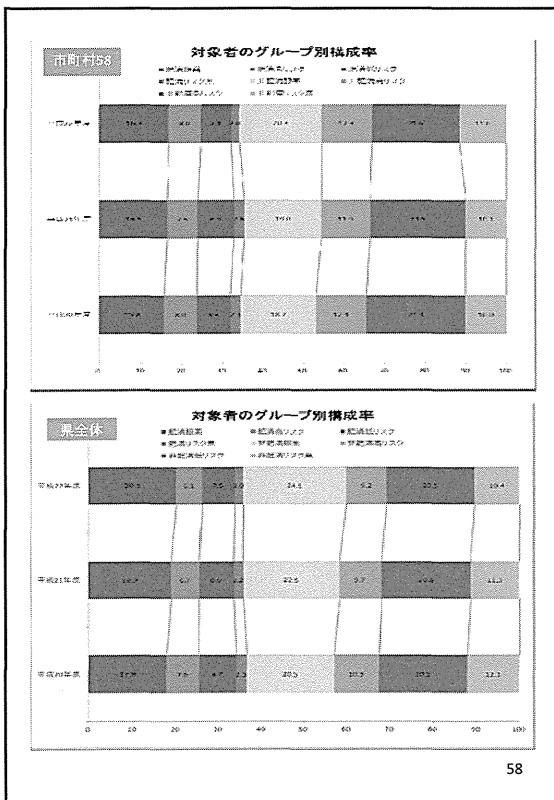
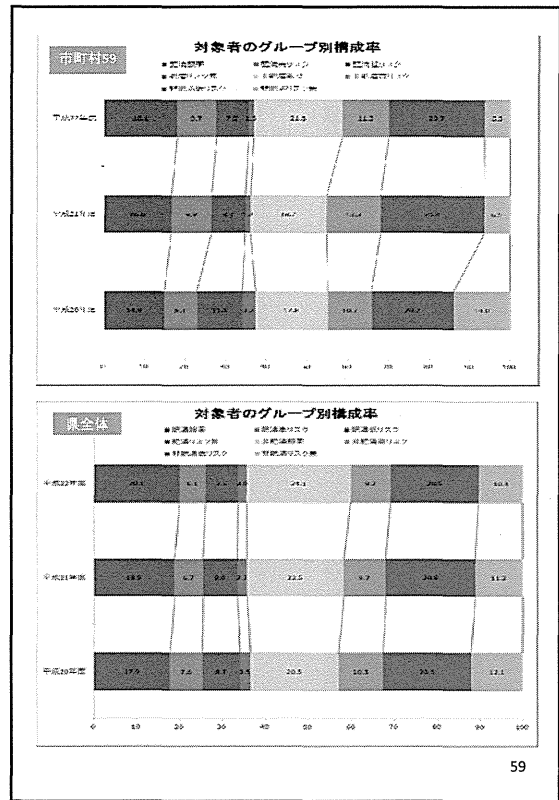
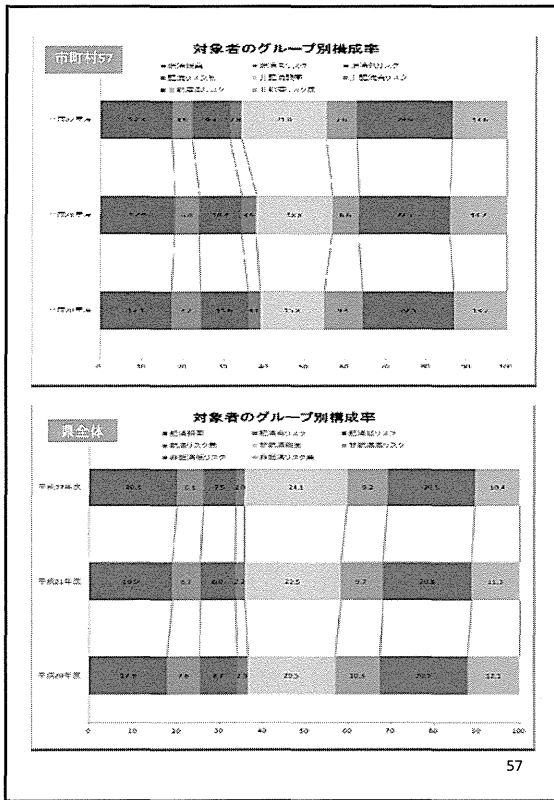


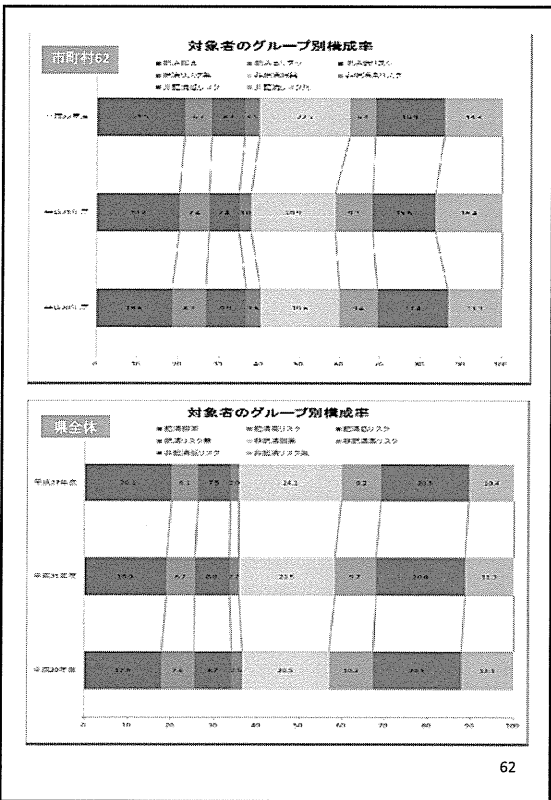
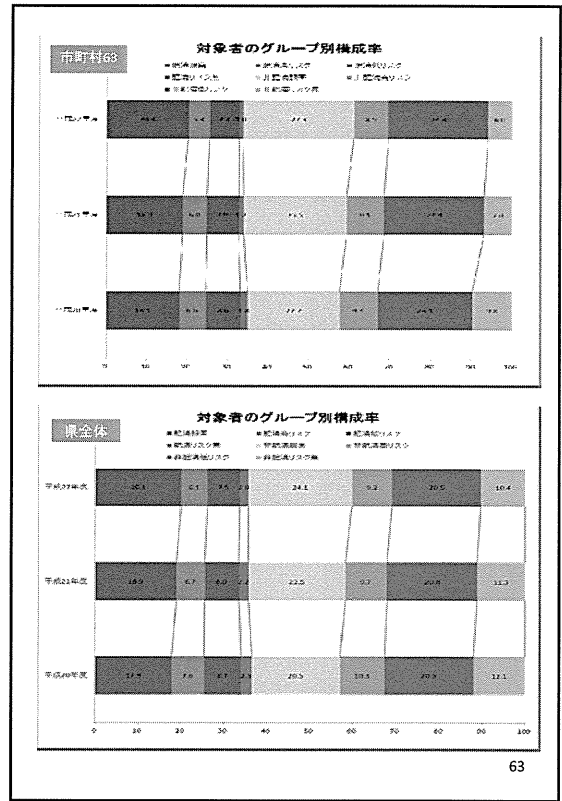
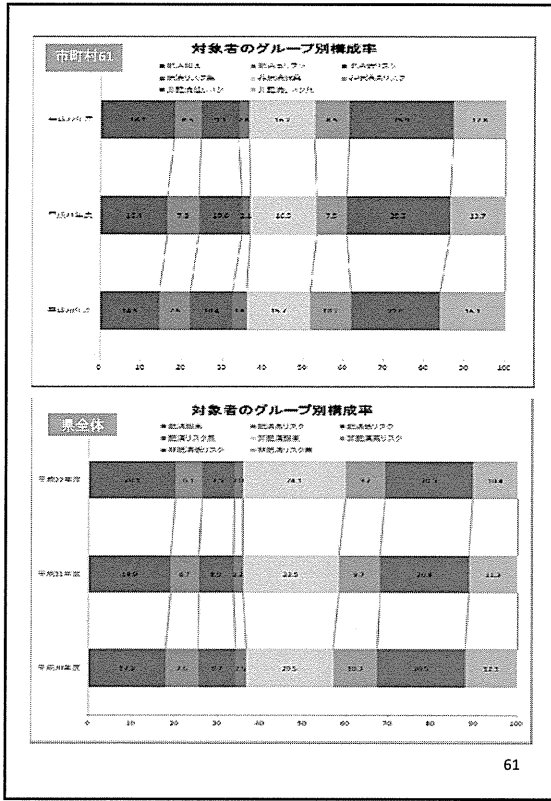












Ⅲ. 研究成果の刊行に関する一覧表

Ⅲ. 研究成果の刊行に関する一覧表

雑誌

発表者氏名	論文タイトル名	発表誌名	巻号	ページ	出版年
古井祐司	医療費分析から考える実効性ある保健事業（後編）	国保ひょうご	604	2-5	2013
古井祐司	医療費分析から考える実効性ある保健事業（前編）	国保ひょうご	603	4-7	2012
古井祐司	実効性ある第2期特定健康診査等実施計画の策定に向けて	埼玉の国保	251(8)	2-5	2012
古井祐司	特定保健指導を高めるヒント	健保連あいち	306	2-4	2012

IV. 研究成果の刊行物・別刷

国保

KOKUHO
HYOGO



2013 MARCH No.604



論説 医療費分析から考える実効性ある保健事業

ルポ 姫路市に聞く！国保料（税）収納率向上に向けた取り組み



兵庫県国民健康保険団体連合会