

associated with the types of surgery but not with the patients' age group. It should be noted that the rate of locoregional recurrence was much higher in the patients after sublobar resection than in those after standard surgery and that the rate of distant metastasis did not increase in the patients who underwent sublobar resection.

The strengths of this study are that a single institutional study provided complete clinical and pathologic information, homogeneous treatment strategy, and well-controlled surgical quality. There are limitations that need to be acknowledged. The period of patient accrual was relatively long. The patients who underwent surgery from 1991 to 2007 were enrolled into the study, although the treatment strategy for stage IA did not change during this period. In addition, the number of elderly patients was smaller than that of the younger population. Secondly, sublobar resection cannot provide as much information for a final staging as lobectomy. Third, we should recognize that such retrospective analyses were inherently affected by predilections for several patients' factors between the types of surgery and the selection bias associated with surgical procedure chosen by thoracic surgeons in this study. There were more male patients, more nonadenocarcinoma, and more smokers in the sublobar group. These are known to be unfavorable prognostic factors in the patients with stage IA NSCLC. It should be noted that survival after sublobar resection was equivalent to that after lobectomy in the elderly.

In conclusion, sublobar resection in the elderly provides a long-term outcome which is equivalent to that obtained after standard lobectomy. This finding suggests that this procedure is considered to be an appropriate treatment strategy for elderly patients with stage IA NSCLC. A larger scale study with patients matched for the principal factors is necessary, however, to confirm the noninferiority of sublobar resection to standard lobectomy in this population.

References

- Owonikoko TK, Ragin CC, Belani CP, et al. Lung cancer in elderly patients: an analysis of the surveillance, epidemiology, and end results database. *J Clin Oncol* 2007;25:5570-7.
- Parkin DM, Bray F, Ferlay J, Pisani P. Global cancer statistics, 2002. *CA Cancer J Clin* 2005;55:74-108.
- Allen MS, Darling GE, Pechet TT, et al. Morbidity and mortality of major pulmonary resections in patients with early-stage lung cancer: initial results of the randomized, prospective ACOSOG Z0030 trial. *Ann Thorac Surg* 2006;81:1013-20.
- Scott WJ, Howington J, Feigenberg S, Movsas B, Pisters K; American College of Chest Physicians. Treatment of non-small cell lung cancer stage I and stage II: ACCP evidence-based clinical practice guidelines (2nd edition). *Chest* 2007; 132(3 suppl):234S-42S.
- Kodama K, Higashiyama M, Takami K, et al. Treatment strategy for patients with small peripheral lung lesion(s): intermediate-term results of prospective study. *Eur J Cardiothorac Surg* 2008;34:1068-74.
- Goldstraw P, Crowley J, Chansky K, et al. The IASLC Lung Cancer Staging Project: proposals for the revision of the TNM stage groupings in the forthcoming (seventh) edition of the TNM Classification of malignant tumours. *J Thorac Oncol* 2007;2:706-14.
- Higashiyama M, Kodama K, Takami K, Higaki N, Nakayama T, Yokouchi H. Intraoperative lavage cytologic analysis of surgical margins in patients undergoing limited surgery for lung cancer. *J Thorac Cardiovasc Surg* 2003;125:101-7.
- Esteve J, Benhamou E, Croasdale M, Raymond L. Relative survival and the estimation of net survival: elements for further discussion. *Stat Med* 1990;9:529-38.
- Cancer Research UK Cancer Survival Group. Strel computer program version 1.2.7 for cancer survival analysis. London School of Hygiene and Tropical Medicine. Available at: www.lshtm.ac.uk/ncdeu/cancersurvival/tools.htm. Accessed January 18, 2010.
- Ginsberg RJ, Rubinstein LV. Randomized trial of lobectomy versus limited resection for T1 N0 non-small cell lung cancer. Lung Cancer Study Group. *Ann Thorac Surg* 1995; 60:615-23.
- Koike T, Tsuchiya R, Goya T, Sohara Y, Miyaoka E. Prognostic factors in 3315 completely resected cases of clinical stage I non-small cell lung cancer in Japan. *J Thorac Oncol* 2007;2:408-13.
- Chang MY, Mentzer SJ, Colson YL, et al. Factors predicting poor survival after resection of stage IA non-small cell lung cancer. *J Thorac Cardiovasc Surg* 2007;134:850-6.
- Kilic A, Schuchert MJ, Pettiford BL, et al. Anatomic segmentectomy for stage I non-small cell lung cancer in the elderly. *Ann Thorac Surg* 2009;87:1662-8.
- Mery CM, Pappas AN, Bueno R, et al. Similar long-term survival of elderly patients with non-small cell lung cancer treated with lobectomy or wedge resection within the surveillance, epidemiology, and end results database. *Chest* 2005;128:237-45.
- Okami J, Higashiyama M, Asamura H, et al. Pulmonary resection in patients aged 80 years or over with clinical stage I non-small cell lung cancer: prognostic factors for overall survival and risk factors for postoperative complications. *J Thorac Oncol* 2009;4:1247-53.
- Koike T, Yamato Y, Yoshiya K, Shimoyama T, Suzuki R. Intentional limited pulmonary resection for peripheral T1 N0 M0 small-sized lung cancer. *J Thorac Cardiovasc Surg* 2003;125:924-8.
- Okada M, Koike T, Higashiyama M, Yamato Y, Kodama K, Tsubota N. Radical sublobar resection for small-sized non-small cell lung cancer: a multicenter study. *J Thorac Cardiovasc Surg* 2006;132:769-75.
- Kodama K, Doi O, Higashiyama M, Yokouchi H. Intentional limited resection for selected patients with T1 N0 M0 non-small-cell lung cancer: a single-institution study. *J Thorac Cardiovasc Surg* 1997;114:347-53.
- Yoshida J, Nagai K, Yokose T, et al. Limited resection trial for pulmonary ground-glass opacity nodules: fifty-case experience. *J Thorac Cardiovasc Surg* 2005;129:991-6.
- Asamura H, Goya T, Koshiishi Y, et al. A Japanese Lung Cancer Registry study: prognosis of 13,010 resected lung cancers. *J Thorac Oncol* 2008;3:46-52.

INVITED COMMENTARY

Okami and colleagues [1] have presented a retrospective review on the survival of elderly patients (age > 75) with stage 1A nonsmall cell lung cancer treated with a sublo-

bar resection compared with elderly patients treated with a standard lobectomy between 1999 and 2007. There were 133 elderly patients in the study with 79 patients treated

Correlations of Thin-Section Computed Tomographic, Histopathological, and Clinical Findings of Adenocarcinoma With a Bubblelike Appearance

Yoko Kojima, MD,* Haruhiro Saito, MD,* Yuji Sakuma, MD,† Tetsuro Kondo, MD,* Hiroyuki Ito, MD,* Masahiro Tsuboi, MD,* Fumihiko Oshita, MD,* Haruhiko Nakayama, MD,* Tomoyuki Yokose, MD,† Yoichi Kameda, MD,† Kazumasa Noda, MD,* and Kouzo Yamada, MD*

Objective: We reported that adenocarcinomas with a bubblelike appearance (BLA) appear similar to old inflammation (*J Comput Assist Tomogr* 2009;33:42–48). The histopathological, clinical, and biological characteristics of adenocarcinomas with BLA need more investigation.

Methods: We retrospectively reviewed the records of 26 patients who had undergone surgical resection between 1993 and 2008. We analyzed correlations between thin-section computed tomographic (TS-CT), histopathological, and clinical findings. We analyzed epidermal growth factor receptor and *K-ras* gene mutations.

Results: The TS-CT findings are unique with one pattern that was the same in all the 26 cases: (1) polygonal with straight and concave margins, (2) slight peripheral ground-glass opacity areas, (3) 3 or more dilated air bronchograms, and (4) clear pleural indentations. The histopathological findings were identical with our TS-CT findings. The mean tumor doubling time was 1165 days. Epidermal growth factor receptor mutations were observed in 17 cases. There were no *K-ras* mutations. After resection, the 5-year survival rate is 100%.

Conclusion: The adenocarcinomas with BLA have unique TS-CT, histopathological, and clinical findings.

Key Words: bubblelike appearance (BLA), lung adenocarcinoma, thin-section CT, ground-glass opacity (GGO), collapse, air bronchogram, bronchioloalveolar cell carcinoma (BAC)

(*J Comput Assist Tomogr* 2010;34: 413–417)

In diagnosing lung cancer on computed tomographic (CT) findings, tumor sizes, shapes, margins, contours, and internal characteristics are important factors to consider. The characteristics of lung cancer tumors usually include increase in size and expansion in shape with lobulated contours and spiculated margins.^{1,2} Conversely, polygonal tumors that have smooth, well-defined margins are usually characteristics of noncancerous lesions such as an old inflammation.^{3,4} However, there are some lung cancers whose CT findings are similar to inflammatory lesions, and such lung cancers are difficult to differentiate from inflammatory lesions and are sometimes misdiagnosed.

We have named such a particular type of lung cancer that looks similar to an old inflammatory lesion *bubblelike appearance (BLA)-type lung adenocarcinoma* based on its CT findings.^{5,6} We are now able to differentiate almost correctly tumors with BLA from inflammatory lesions because the tumors with BLA have several characteristics on thin-section CT (TS-CT) findings: polygonal; contained 3 or more dilated air bronchograms, which

resembled collections of bubbles; and slight peripheral ground-glass opacity (GGO) areas. The characteristics of a tumor with BLA, however, have not been fully elucidated. Thus, in this study, we analyzed the TS-CT findings, histopathological findings, epidermal growth factor receptor (*EGFR*) and *K-ras* gene mutations, and clinical findings of BLA-type adenocarcinomas.

MATERIALS AND METHOD

Patients

We retrospectively reviewed the records and the TS-CT images of 26 patients (7 men and 19 women) with adenocarcinomas. All of the tumor CT findings present BLAs whose characteristics include the following: polygonal; contained 3 or more dilated air bronchograms, which resembled collections of bubbles; and slight peripheral GGO areas.⁵ All of the patients in our study had undergone resection between November 1993 and August 2008. The total number of patients with lung adenocarcinoma who we operated on within this period was 1462 cases.

Computed Tomographic Finding Evaluations

The TS-CT scans were obtained before surgery by way of the Aquilion or X-Vigor/Real CT scanner (Toshiba Medical System, Tokyo, Japan). All the TS-CT images were obtained from the thoracic inlet through the lung base with a 0.5- to 2-mm thickness and a 0.5- to 2-mm-section spacing. One hundred milliliters of contrast media was used in each case. All images were photographed onto film using mediastinal (window level, 40 Hounsfield units [HU]; window width, 400 HU) and lung (window level, -600 HU; window width, 1600 HU) window settings. In 9 cases, the patients were observed for a period of 3 months to 8 years. In these cases, we compared each patient's most recent TS-CT images with their initial TS-CT images. We paid particular attention to changes in tumor sizes and shapes. All the CT scans were acquired within 1 week of each patient's operation. Two specialists, working in conjunction, assessed the TS-CT findings. The threshold size of lesion growth was 1 mm with dimensions larger than the pixel size. The tumor volume doubling time (VDT) was calculated according to the method established by Usuda et al,⁷ which is based on a modified Schwartz formula.

Histopathological Evaluations

Surgical specimens were fixed in an inflated state via transbronchial infusion of formalin and serially sectioned transversely. All the sections were stained with hematoxylin-eosin and elastica-van Gieson stains. Slices with the largest tumors analogous to the plane of the CT scans were microscopically analyzed.

EGFR and *K-ras* Mutation Analysis

Formalin-fixed, paraffin-embedded tissue sections were used to isolate DNA from all the adenocarcinoma lesions.⁸

From the Departments of *Thoracic Oncology, and †Pathology, Kanagawa Cancer Center, Kanagawa, Japan.

Received for publication August 25, 2009; accepted December 30, 2009.

Reprints: Haruhiro Saito, MD, Department of Thoracic Oncology, Kanagawa Cancer Center, 1-1-2 Nakao, Ashahi-ku, Yokohama-shi, Kanagawa 241-0815, Japan (e-mail: saito-h@kcch.jp).

Copyright © 2010 by Lippincott Williams & Wilkins

TABLE 1. Patients' Characteristics

No. patients	26
Age, mean (range), yr	68 (53–80)
Sex (male/female)	7/19
History of smoking (yes/no)	8/18
Symptom (yes/no)	0/26
Detection (screening/other disease)	17/9
Location RUL/RML/RLL	12/1/2
LUL/LLL	7/4

LLL indicates left lower lobe; LUL, left upper lobe; RLL, right lower lobe; RML, right middle lobe; RUL, right upper lobe.

Mutational analyses of *EGFR* gene exons 18, 19, and 21 and *K-ras* gene codons 12 and 13 were performed by loop-hybrid mobility shift assay and sequencing as described previously.^{8–10}

RESULTS

Background Factors

Table 1 shows the patients' backgrounds. We reviewed the TS-CT images of 26 patients (7 men and 19 women). The mean age was 68 years (range, 53–80 years). In 8 cases (30.7%), the patients had a history of smoking. In 17 cases, tumors were detected by screening. There were no cases to show any physical sign such as cough.

In 9 cases, tumors were detected while the patients were being treated for other diseases. The locations of the tumors were as follows: In 12 cases, the tumor was located in the right upper lobe. In 1 case, the tumor was located in the right middle lobe. In 2 cases, the tumor was located in the right lower lobe. In 7 cases, the tumor was located in the left upper lobe. In 4 cases, the tumor was located in the left lower lobe. The resections were as follows: Lobectomy was performed in 24 cases. Segmentectomy was performed in 1 case. Wide-wedge resection was performed in 1 case. Recurrence of tumors was noted in 1 case after resection. The disease-free survival rate is 96%, and the 5-year survival rate is 100%.

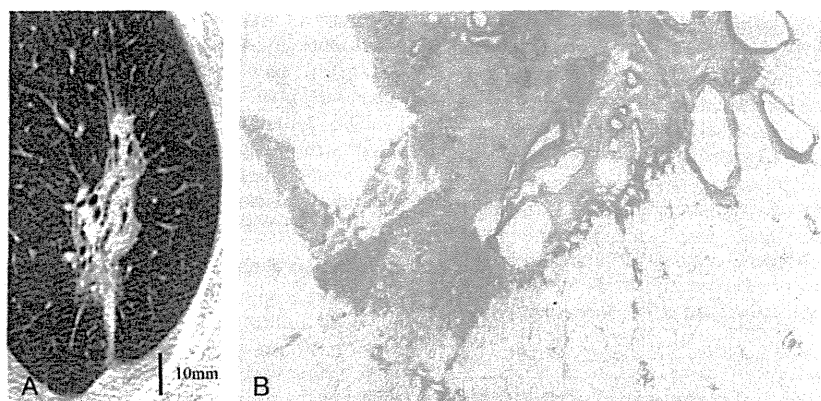


FIGURE 1. A, In a 74-year-old man, a lesion was noticed on the chest x-ray images during this patient's medical checkup. The tumor was in the left upper lobe (S1+2). The tumor size was 60 × 40 mm. The TS-CT findings were as follows: polygonal with straight and concave margins, slight peripheral GGO areas around the tumor, dilated air bronchograms within the tumor area, and a prominent pleural indentation. B, This pathological specimen reveals a tumor, which is mostly collapsed (88% of the tumor area). Slight peripheral BAC areas around the tumor are present, as well as more than 3 enlarged small bronchi (pT2N1M0). Adopted from reference 6.

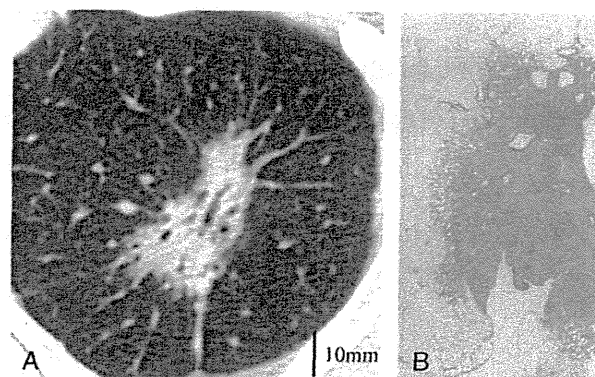


FIGURE 2. A, In a 57-year-old woman, a lesion was noticed on the chest x-ray images during this patient's medical checkup. The tumor size was 43 × 27 mm. The TS-CT findings were as follows: The tumor was in the left upper lobe. The tumor is polygonal with straight and concave margins, slight peripheral GGO areas around the tumor, ectatic small bronchi within the tumor area, and a prominent pleural indentation. B, This pathological specimen shows that most of the tumor area was occupied collapsed (83% of the tumor area), with slight peripheral BAC around the tumor. There were more than 3 ectatic small bronchi (pT2 N0 M0).

Findings on TS-CT of BLA-Type Adenocarcinoma

In all the 26 cases, characteristic TS-CT findings were observed as follows (Fig. 1–3): (1) The tumor is polygonal with straight and concave margins. (2) There are slight peripheral GGO areas around the tumor. (3) There are 3 or more dilated small bronchi (air bronchograms) within the tumor area and (4) clear pleural indentation(s). These 4 characteristics of TS-CT findings are the same in all the BLA-type adenocarcinomas (Table 2).

The 9 cases were followed up because they were initially diagnosed as old inflammation based on the CT findings. The follow-up CT findings revealed slow-growth tumors with more clearly defined pleural indentations. The tumor VDT in 9 cases was calculated by using the methods established by Usuda et al⁷

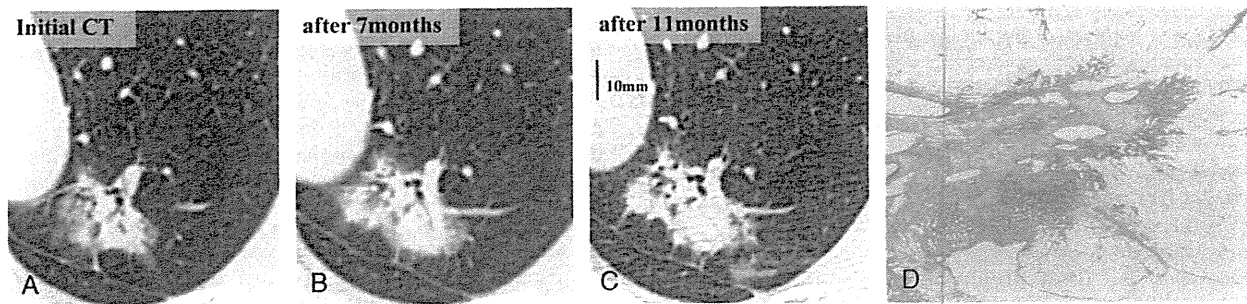


FIGURE 3. In a 68-year-old woman, a tumor was found in the left upper lobe. We first diagnosed this lesion as old inflammation. We observed this patient for a year and noted that her tumor grew very slowly and that the pleural indentations became more clearly defined. The TS-CT findings were as follows: The tumor was in the left upper lobe (S3). The tumor size was 35 × 24 mm. The tumor was polygonal with straight and concave margins. There were peripheral GGO areas around the tumor, dilated small bronchi within the tumor, and prominent pleural indentations. A, Initial image by TS-CT. The tumor in the left upper lobe was determined as an inflammatory lesion. B and C, Rescanned TS-CT images after 7 and 11 months more. The tumor increased slowly in diameter from 30 to 35 mm. The tumor in the left upper lobe is polygonal with straight and concave margins. Note the slight peripheral GGO around the tumor, the dilated air bronchograms in the tumor, and the prominent pleural indentation. D, This pathological specimen shows that most of the tumor area was occupied collapsed (80% of the tumor area) with a slight peripheral BAC. There were more than 3 ectatic small bronchi in the tumor area (pT2 N0 M0).

based on a modified Schwartz formula. The mean (SD) VDT was 1165 (773) days (Table 3).

Pathological Findings of BLA-Type Adenocarcinoma

The mean (SD) tumor size was 35.4 (7.3) mm (16–50 mm). All the 26 cases presented characteristic pathological findings as follows (Table 4): (1) There were extensive (a mean of 80%) areas of collapse within the tumors. (2) The peripheral areas of the tumors are bronchioloalveolar cell carcinoma (BAC), the area of which involved approximately 20% of the whole tumor area. (3) There were several dilated small bronchi within the collapse areas. Invasive lesions were observed only in 2 cases (4.4% and 8.8% of the whole tumor area). Lymphatic permeation and vascular invasion were observed in 1 and 3 cases, respectively. The pathological stages included IA in 8 cases, IB in 15, IIB in 2, and IIIA in 1. The World Health Organization pathological classification is BAC: 4 cases, mixed subtype with BAC; 6 cases, mixed subtype with BAC and papillary (or acinar); 16 cases.

EGFR and K-ras Mutation Analysis

EGFR mutations were observed in 17 (65.4%) of the 26 cases. The patients having tumors with EGFR mutations included 4 (of the 7) men and 13 (of the 19) women. Most (12 of 17, 70.5%) mutations detected were L858R point mutations in exon 21. The others (n = 5) were deletion mutations in exon 19. No K-ras mutations were found in any of the 26 cases (Table 5).

DISCUSSION

Some lung cancers are diagnosed as inflammatory lesions and are usually difficult to differentiate from inflammatory tumors.¹¹ Unfortunately, there have only been a few precise

reports about such lung cancers.¹² Adenocarcinomas with BLA, a type of lung cancer, appear similar to inflammatory lesions. Our study focused on the precise characteristics of such cancers and how to differentiate BLA-type adenocarcinomas from inflammatory lesions.

All of our BLA-type lung adenocarcinoma CT findings are unique, with one pattern that included the same 4 characteristics including the following: (1) polygonal with straight and concave margins, (2) slight peripheral GGO, (3) 3 or more dilated small bronchi (air bronchograms), and (4) clear pleural indentation. Tumors with these characteristics are easily misdiagnosed as inflammatory lesions. Kohono et al¹¹ reported on CT appearances of focal organized pneumonia and concluded that oval masses with pleural tags along the bronchovascular bundle and on satellite lesions are suggestive of benign lesions; however, such CT findings vary greatly and are sometimes difficult to differentiate from bronchogenic carcinomas even on the most advanced CT equipment. They also reported on focal pneumonia with bronchial dilations, which appear similar to BLA-type adenocarcinomas.^{5,11} Li et al¹ reported that polygonal tumors with smooth or semi-smooth margins are less frequently present in malignant lesions than in benign lesions. Because of the polygonal tumors with both straight and concave margins, BLA-type adenocarcinomas are sometimes overlooked as inflammatory lesions. In fact, in 9 of our cases, this type of adenocarcinoma was initially diagnosed as an old inflammatory lesion. The air bronchograms are reported to be useful CT findings that help us to differentiate adenocarcinomas from benign lesions.¹³ However, it should be noted that air bronchograms are present in old inflammatory lesions in approximately 50% of such cases.¹¹ We tend to diagnose BLA-type adenocarcinoma findings that include ectatic bronchi as inflammatory bronchial ectasis. Polygonal lesions, including ectatic bronchiole and pleural tags, are also findings

TABLE 2. Characteristic TS-CT Findings of BLA

Polygonal with straight and concave margins
Slight peripheral GGO areas around the tumor
Three or more dilated air bronchograms within the tumor area
Clear pleural indentation

TABLE 3. Cases Followed up by CT

No. patients	9
Initial diagnosis	Inflammation (9 cases)
Observation time, d	758 (approximately 30–2555)
VDT, mean (SD), d	1165 (773)

TABLE 4. Pathological Findings of BLA Adenocarcinomas

Tumor diameter, mean (SD) [range], mm	35.4 (7.3) [16–50]
No. cases of peripheral BAC	26
Area of collapse, mean (range), %	80 (35–97)
Area of BAC, mean (range), %	19 (3–65)
Areas of invasive lesions, % (No. patients)	0 (15), 4.4 (1), and 8.8 (1)
Lymphatic permeation/vascular invasion	1/3
Pathological stage (IA/IB/IIB/IIIA)	8/15/2/1

in inflammatory lesions; however, tumors having slight periphery GGO areas are characteristic findings only observed in adenocarcinoma.⁴ We have concluded that tumors with peripheral GGO areas are the most important difference between BLA-type adenocarcinomas and inflammatory lesions.

The pathological findings confirmed our diagnosis based on the CT findings. The characteristic pathological findings are as follows: (1) The peripheral GGO areas observed on the TS-CT scans correspond with the pathological findings of the BAC areas. The BAC parts occupied approximately 19% of the tumor areas. (2) The solid parts that can be seen on the TS-CT scans were pathologically confirmed to be areas of collapse. The collapsed parts occupied approximately 80% of the tumor area. (3) Three or more dilated small bronchus within the tumor area is a characteristic finding. We think that the growth mechanism of the BLA-type adenocarcinomas includes gradually expanding areas of BAC in periphery regions and extensive simultaneous collapse within the tumor area. The tumor shape becomes distorted, and pleural indentation become more clearly. The tissue around the small bronchi becomes distorted, and dilated small bronchi are formed.⁵ In the 9 cases we observed over a period, the above-mentioned growth patterns were observed on the TS-CT scans (Fig. 3). In 1 of the 9 cases, the tumor temporally shrank because the inside of the tumor collapsed. The shrinkage occurred convergent to the center. Invasive lesions were observed in only 2 cases, but they occupied less than 10% of the whole tumor area.

In the 9 cases that were observed by TS-CT over a period, a longer VDT was noted; the mean VDT was 1165 days. Lillington¹⁴ reported that the VDT of benign tumors was more than 450 days and the VDT of malignant tumors was less than 450 days. Aoki et al¹⁵ reported that the VDT of adenocarcinomas was 124 to 1486 days. The BLA-type adenocarcinomas have slow growth rates like BAC.¹⁵ Adenocarcinomas with BLA have a slow growth rate because they are pathologically well differentiated, which include areas of collapse within the tumor that occur while a tumor is expanding. The expanding tumor areas and the shrinkage of the actual tumor (due to simultaneous collapse) occur at the same time while the tumor area expands. Adenocarcinomas with BLA are often diagnosed as old inflammatory lesions because of their specific TS-CT findings and slow growth.

Postoperative recurrence of BLA-type lung adenocarcinoma was noted in just 1 case. The 5-year survival rate is, at this time, 100%. It was reported that the smaller the invasive area, the better the prognosis. Hence, we can conclude that BLA-type adenocarcinomas have a good prognosis.¹⁶ Usuda et al⁷ reported that growth rates are important considerations when determining the prognosis. They wrote that the slow-growth group had a VDT longer than 113.3 days, whereas the rapid-growth group had a VDT of shorter than 113 days. The prognosis for the slow-growth group is better than that of the

rapid-growth group. According to the pathological findings and the shorter VDT, we can conclude that BLA-type adenocarcinomas have a good prognosis.

In most of our 26 cases, it was difficult to accurately diagnose adenocarcinomas by a bronchoscope alone before the operation. In 21 cases, bronchoscopic studies were performed. Seven cases were diagnosed as adenocarcinoma by cytologic examination. Fourteen cases from classes 1 to 3 on cytologic examination could not be accurately diagnosed as carcinomas. We found that it is difficult to diagnose a malignancy because most parts of a tumor consist of collapsed areas and there are few cancer cells within the collapse area. Positron emission tomography was performed in 7 cases. Their maximum standardized uptake value (data not shown) was between 0.64 and 2.01. These are low marks, although the sizes were over 3 cm.¹⁷ Consequently, we concluded that the unique TS-CT findings are the most important diagnostic consideration before an operation. Seventeen cases could not be pathologically diagnosed before the operation. Four of the 17 cases were diagnosed as lung cancer because the tumors grew during the observation periods. Nine of the 17 cases were diagnosed as BLA-type adenocarcinoma because they had all the BLA characteristic TS-CT findings. The patients underwent pulmonary lobectomy. In 2 cases, it was very difficult to diagnose a malignancy, so a pathological diagnosis was necessary during the operation.

In this study, *EGFR* mutations were detected in 65% of the BLA-type adenocarcinomas. We have reported that *EGFR* mutations were detected in approximately 60% of surgically resected lung adenocarcinomas in our hospital.⁹ Thus, the *EGFR* mutational frequency in the present study is compatible with our previous report. It is of note that lung adenocarcinomas with nonmucinous BAC components have *EGFR* mutations more frequently than those without the components, and all of the 26 examined tumors with BLA had nonmucinous BAC components. On the other hand, approximately 70% of the *EGFR* mutations in BLA adenocarcinomas were clustered in the L858R point mutation. This L858R mutational frequency is inconsistent with well-known facts that L858R point mutations in exon 21 and deletion mutations in exon 19 are detected in almost equal frequency in lung adenocarcinomas.^{18,19} This high frequency of the L858R point mutation may be a characteristic of BLA adenocarcinomas and might be related to biological characteristics of slow-growing tumors.

CONCLUSIONS

We also recommend that adenocarcinomas with BLA be more carefully observed because they can so easily be misdiagnosed as old inflammation. It is important to pay special attention to the unique characteristics of lung cancers. The TS-CT findings are a very important diagnostic tool, and we need to learn to evaluate these findings more accurately. We must confirm and correctly evaluate peripheral GGO areas and/or other characteristic findings.

TABLE 5. *EGFR* Mutation Analysis

<i>EGFR</i> mutations, No. cases	17/26
Details of mutation-positive cases, No. cases	
Male/female	4/13
L858R mutation	12/17
Exon 19 deletion	5/17
No mutations, No. cases	9/26
<i>K-ras</i> mutations, No. cases	0/26

ACKNOWLEDGMENT

This study was supported in part by a Japanese Ministry of Health, Labor, and Welfare grant-in-aid for cancer research (16-1).

REFERENCES

1. Takanashi N, Nobe Y, Asoh H, et al. The diagnostic accuracy of a solitary pulmonary nodule, using thin-section high resolution CT: a solitary pulmonary nodule by HRCT. *Lung Cancer*. 1995;13:105-112.
2. Lee KS, Yi CA, Jeong SY, et al. Solid or partly solid solitary pulmonary nodules: their characterization using contrast wash-in and morphologic features at helical CT. *Chest*. 2007;131:1516-1525.
3. Erasmus JJ, Connolly JE, McAdams HP, et al. Solitary pulmonary nodules: part 1. Morphologic evaluation for differentiation of benign and malignant lesions. *Radiographics*. 2000;20:43-58.
4. Li F, Sone S, Abe H, et al. Malignant versus benign nodules at CT screening for lung cancer: comparison of thin-section ct findings. *Radiology*. 2004;233:793-798.
5. Saito H, Yamada K, Hamanaka N, et al. Initial findings and progression of lung adenocarcinoma on serial computed tomography scans. *J Comput Assist Tomogr*. 2009;33:42-48.
6. Kojima Y, Saito H, Ito H, et al. Bubble-like appearance are characteristic thin-section CT findings of adenocarcinoma. *Jpn J Lung Cancer*. 2008;48:801-806.
7. Usuda K, Saito Y, Sagawa M, et al. Tumor doubling time and prognostic assessment of patients with primary lung cancer. *Cancer*. 1994;74:2239-2244.
8. Matsukuma S, Yoshihara M, Kasai F, et al. Rapid and simple detection of hot spot point mutations of epidermal growth factor receptor, BRAF, and NRAS in cancers using the loop-hybrid mobility shift assay. *J Mol Diagn*. 2006;8:504-512.
9. Sakuma Y, Matsukuma S, Yoshihara M, et al. Distinctive evaluation of nonmucinous and mucinous subtypes of bronchioloalveolar carcinomas in *EGFR* and *K-ras* gene-mutation analyses for Japanese lung adenocarcinomas: confirmation of the correlations with histologic subtypes and gene mutations. *Am J Clin Pathol*. 2007;128:100-108.
10. Sakuma Y, Okamoto N, Saito H, et al. A logistic regression predictive model and the outcome of patients with resected lung adenocarcinoma of 2 cm or less in size. *Lung Cancer*. 2008;65:85-90.
11. Kohono N, Ikezoe J, Johkoh T, et al. Focal organizing pneumonia: CT appearance. *Radiology*. 1993;189:119-123.
12. Lantuejoul S, Colby TV, Ferretti GR, et al. Adenocarcinoma of the lung mimicking inflammatory lung disease with honeycombing. *Eur Respir J*. 2004;24:502-505.
13. Kuriyama K, Tateishi R, Doi O, et al. Prevalence of air bronchograms in small peripheral carcinomas of the lung on thin-section CT: comparison with benign tumors. *AJR Am J Roentgenol*. 1991;56:921-924.
14. Lillington GA. Management of solitary pulmonary nodules. How to decide when resection is required. *Postgrad Med*. 1997;101:145-150.
15. Aoki T, Nakata H, Watanabe H, et al. Evaluation of peripheral lung adenocarcinomas: CT findings correlated with histology and tumor doubling time. *AJR Am J Roentgenol*. 2000;174:763-768.
16. Noguchi M, Morikawa A, Kawasaki M, et al. Small adenocarcinoma of the lung histologic characteristics and prognosis. *Cancer*. 1995;75:2844-2852.
17. Yi CA, Lee KS, Kim B-T, et al. Tissue characterization of solitary pulmonary nodule: comparative study between helical dynamic CT and integrated PET/CT. *J Nucl Med*. 2006;47:443-450.
18. Yatabe Y, Mitsudomi T. Epidermal growth factor receptor mutations in lung cancers. *Pathol Int*. 2007;57:233-244.
19. Yamamoto H, Toyooka S, Mitsudomi T. Impact of *EGFR* mutation analysis in non-small cell lung cancer. *Lung Cancer*. 2009;63:315-3216.

Original Article

Histological progression of small intrapulmonary metastatic tumor from primary lung adenocarcinoma

Keiju Aokage,^{1,2} Genichiro Ishii,¹ Junji Yoshida,² Tomoyuki Hishida,² Mitsuyo Nishimura,² Kanji Nagai² and Atsushi Ochiai¹

¹Pathology Division, Research Center for Innovative Oncology and ²Division of Thoracic Surgery, National Cancer Center Hospital East, Kashiwa, Chiba, Japan

The histopathology of small metastases is thought to reflect the early metastatic process. To clarify the morphological features of early metastatic tumor progression, we analyzed the histological heterogeneity of many small intrapulmonary metastases. Histological typing based on the World Health Organization classification (bronchioloalveolar carcinoma, acinar, papillary, and solid subtype) was used to evaluate 234 metastases from the primary lung adenocarcinomas of 139 patients. The predominant subtype of metastasis 3 mm or less in diameter was bronchioloalveolar carcinoma when the primary lesion was diagnosed as predominant bronchioloalveolar carcinoma, acinar, and papillary subtype. When the histology of the primary tumor was predominantly a solid subtype, the predominant subtype of metastatic tumor was also a solid subtype. However, analysis of metastases that were more than 3 mm showed that the predominant subtype of the metastasis reflected the predominant subtype of the primary tumor. Furthermore, we evaluated the number of subtypes in primary and metastatic tumors. As the metastasis grew larger, the number of subtypes in the metastatic lesion increased and came close to the number composed in the primary lesion. These findings suggest that implanted cancer cells display lepidic growth

in the early metastatic phase and recapitulate the morphological heterogeneity of the original tumor as the metastasis enlarges.

Key words: heterogeneity, intrapulmonary metastasis, lung adenocarcinoma

Adenocarcinoma is the most common histological type of primary non-small cell lung cancer (NSCLC) and the tumors are often histologically heterogeneous. Lung cancer heterogeneity, especially of adenocarcinoma, has been recognized since the 1950s.^{1,2} This characteristic has provided various discussions for many pathologists over the past several decades. Although, the World Health Organization (WHO) classification of lung adenocarcinoma has changed several times, in 2004 the WHO classified adenocarcinoma of the lung into five distinct subtypes: bronchioloalveolar carcinoma (BAC); acinar adenocarcinoma; papillary adenocarcinoma; solid adenocarcinoma with mucin production; and mixed subtype.^{3,4} Since most adenocarcinomas are histologically heterogeneous, consisting of two or more histological subtypes, the majority of adenocarcinomas of the lung are classified as the mixed subtype.⁴ The histological heterogeneity is an important feature of the pathology of adenocarcinoma of the lung, which consists of a mixture of histological types that represent derivation of lung cancer from pluripotent stem cells.

Metastasis, the spread of cancer cells from the primary lesion to form distant lesions, leads to the death of almost all cancer patients. Metastasis is a complex, multistep process that ultimately results in the formation of a mature tumor. Many investigators have elucidated some of the molecular mechanisms that underlie many of events involved in tumor metastasis, and three possible mechanisms of intrapulmonary metastasis have been postulated and described: a mechanism via the lymphatic vessel route; a mechanism via the blood vessel route; and a mechanism via the airway

Correspondence: Genichiro Ishii, MD, PhD or Atsushi Ochiai, MD, PhD, Pathology Division, Research Center for Innovative Oncology, National Cancer Center Hospital East, 6-5-1 Kashiwanoha, Kashiwa-city, Chiba-prefecture, 277-8577, Japan. Email: gishii@east.ncc.go.jp (G. Ishii), aochiai@east.ncc.go.jp (A. Ochiai)

This work was supported in part by the Grant-in-Aid for Cancer Research from the Ministry of Health, Labor and Welfare, the Grant for Scientific Research Expenses for Health Labor and Welfare Programs, the Foundation for the Promotion of Cancer Research, 3rd-Term Comprehensive 10-year Strategy for Cancer Control, and Special Coordination Funds for Promoting Science and Technology from the Ministry of Education, Culture, Sports, Science and Technology, the Japanese Government.

Received 24 April 2010. Accepted for publication 21 July 2010.

© 2010 The Authors

Pathology International © 2010 Japanese Society of Pathology and Blackwell Publishing Asia Pty Ltd

route.⁵ Metastatic tumor cells generally separate from the primary tumor and attach to the vascular or lymphatic endothelium. A few cells extravasate and proliferate to form cell clusters. They recruit inflammatory cells to their cancer associated stroma and promote angiogenesis interacting with their stromal cells. Recent evidence suggests that the ability of cancer cells to metastasize reflects an inherent property of some cancer stem cells.⁶⁻⁹ However, questions remain about the early metastatic process proliferating as colonies and forming a tumor within parenchyma.¹⁰

The lung is the most common site of metastases of primary NSCLC,¹¹ and small occult intrapulmonary metastatic tumors (micrometastases of primary lung cancer) are often detected in surgical specimens under the light microscope. The histopathology of small metastatic tumors is thought to reflect the early metastatic process of adenocarcinoma of the lung. The aim of this study was to elucidate the morphological characteristics and tumor progression of metastatic tumor from lung adenocarcinoma with especially in relation to size and histological heterogeneity.

MATERIALS AND METHODS

Patient selection

Intrapulmonary metastases from primary lung cancer was detected in the resected specimens of 222 of the 3161 consecutive NSCLC patients who underwent surgical resection at the National Cancer Center Hospital East, Chiba, Japan, between July 1992 and October 2008. After excluding the 37 patients with incomplete data and the 46 patients diagnosed with non-adenocarcinoma, the remaining 139 patients diagnosed with adenocarcinoma and their 234 metastatic lesions in the lung were evaluated (Fig. 1). The median size of the primary tumors was 37 mm in diameter. Forty primary tumors were located in the right upper lobe (28.8%), 11 tumors in the right middle lobe (7.9%), 38 tumors in the right lower lobe (27.3%), and 19 tumors in the left lower lobe (13.7%).

In November 2008 the institutional review board approved the data collection and analyses and waived the need to obtain informed consent from each patient.

Histological studies

The surgical specimens were fixed in formalin or 100% methanol. These were sliced at the maximum diameter of the primary tumors and the subdivided sections of the cut surface were embedded in paraffin. Additionally, we identified each peripheral subsegmental bronchus and routinely cut slices of the divided sections involving the subsegmental bronchus even if there were no lesions. These sections were also

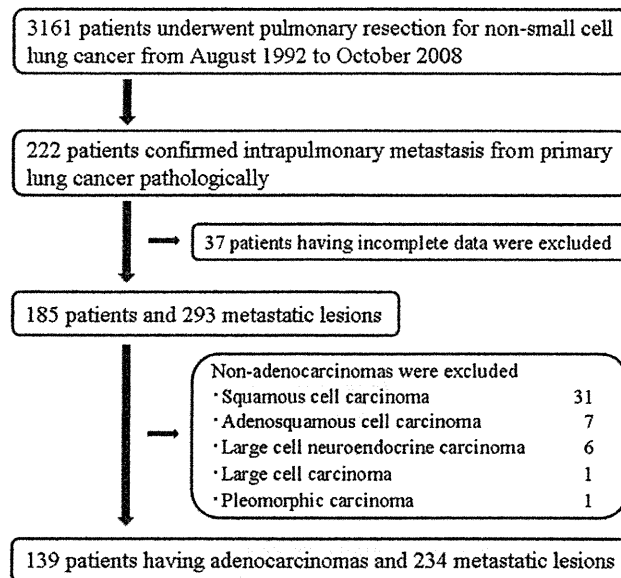


Figure 1 Consort diagram of this study. One hundred and thirty-nine patients with adenocarcinoma and a total of 234 intrapulmonary metastases were analyzed as an available cohort.

embedded in paraffin. The median number of tissue blocks per resected specimen was 23. Serial 4 μ m sections were stained with HE, by the Alcian blue-periodic acid-Schiff (AB-PAS) method for cytoplasmic mucin production, and by the Elastica van Gieson (EVG) or Victoria-blue van Gieson (VVG) stain method for elastic fibers. The primary tumors were diagnosed histologically based on the WHO classification of cell types and divided into five subtypes: BAC subtype (non-mucinous BAC or mucinous BAC); acinar subtype; papillary subtype; solid adenocarcinoma with mucin production subtype; and a mixed subtype.³ We also identified the predominant subtype in the mixed subtype lesions. Lymphatic permeation was evaluated on Hematoxylin-Eosin (HE) stained sections and D2-40 stained sections, and vascular invasion was evaluated by examining EVG and VVG stained sections. The pulmonary metastasis (PM) category was divided into PM1, for a metastatic lesion in the same lobe as the primary lesion, and PM2, for a metastatic lesion in a different lobe from the primary lesion.

Histological subtyping of the metastatic tumors was performed according to the same classification used for the primary tumor, and the predominant subtype was also identified. The extent of fibrosis in the metastatic foci was evaluated as none/mild and moderate/severe. We also examined the section for the state of alveolar septal destruction (assessed by VVG staining) and the extent of lymphocyte infiltration (none or mild and moderate or severe). These morphological features of the metastatic tumor were statistically compared in the two groups formed by dichotomizing by the median diameter of the metastases of 3 mm.

Histological criteria for the diagnosis of metastatic tumor

All histological materials included in this series were initially assessed for diagnosis by pathologists. The materials were subsequently reviewed by two pathologists (K. A. and G. I.) to confirm the presence of pulmonary metastasis and assess the histopathological features of both the primary and metastatic tumors. An intrapulmonary metastasis was diagnosed according to the following definitions: (i) primary tumor having vascular invasion and/or lymphatic permeation, a secondary tumor having the same cytological feature including nuclear atypia as the primary tumor, and the secondary tumor cells showing severe nuclear atypia even at the peripheral region; or (ii) the existence of many scattered floating cancer cells in alveolar space and small satellite lesions surrounding the primary tumor and a secondary tumor having the same cytological feature including nuclear atypia as the primary tumor, as well as the secondary tumor cells showing severe nuclear atypia even at the peripheral region. These criteria were obtained by partially modifying the criteria established by Martini and Melamed.¹² To prove the validity of our differential diagnoses we analyzed the survival of this population using the Kaplan-Meier Method. Pathological staging was based on the seventh TNM Classification of Malignant Tumors.¹³ The 5 year survival rates of pathological stage IIB, IIIA, and IIIB/IV of this study were 40.8, 25.6, and 8.5%, respectively. These results were similar to previous international data, supporting the validity of our diagnosis.^{14,15}

Histological subtype heterogeneity index

The histological subtype heterogeneity index of a metastatic tumor was defined as the ratio of the number of subtypes composing the metastatic tumor to the number of subtypes composing the primary tumor and expressed as a decimal; if the primary tumor was composed of a BAC, acinar, and papillary component (three subtypes) and the metastatic tumor were composed of a BAC and papillary component (two subtypes), the histological subtype heterogeneity index would be 2/3 (0.67). The possible index range is from 0.25 (1/4) to 1.00 (1/1, 2/2, 3/3, and 4/4). The histological subtype heterogeneity indexes of the two groups formed by dichotomizing the metastases by their median size of 3 mm were statistically compared in each denominator of the number of subtypes in the primary tumor from 1 to 4. There was no intrapulmonary metastatic tumor whose number of subtypes exceeded the number of subtypes composed in the primary tumor in this study. Therefore, the histological subtype heterogeneity indexes never exceeded 1.00.

Statistical analysis

Differences in patient characteristics between the two groups were tested for significance with Pearson's chi-squared test. The unpaired *t*-test was performed to calculate the statistical significance of differences. All *P* values reported are two-sided, and the significance level was set at less than 0.05. The analyses were performed with the SPSS 11.0 statistical software program (Dr SPSS II for Windows, standard version 11.0, SPSS Inc., Chicago, IL, USA) and GraphPad Prism statistical software program (Prism for Windows, Version 5.02, GraphPad Software, Inc., La Jolla, CA, USA).

RESULTS

Clinicopathological findings

The clinicopathological data of the 139 patients diagnosed with adenocarcinoma are summarized in Table 1. Intrapulmonary metastases were detected occasionally in the resected specimen of 121 patients (87.1%). Eighteen patients (12.9%) were diagnosed as having intrapulmonary metastasis preoperatively. Forty-seven patients (33.8%), 78 patients (56.1%), 9 patients (6.5%), and 5 patients (3.6%) were pathologically diagnosed as stage IIB, IIIA, IIIB, and IV, respectively. Their survival curves are depicted in Fig. 2. The 5 year survival rates of pathological stage IIB, IIIA, and IIIB/IV in this study were 40.8, 25.6, and 8.5%, respectively. The histological subtypes of the primary tumor in the 139 lung adenocarcinoma patients were: mixed subtype adenocarcinoma in 134 patients (96.4%); pure BAC subtype in 0 patients (0%); acinar subtype in 0 patients (0%); papillary subtype in 1 patient (0.7%); and the solid adenocarcinoma with mucin production subtype in 4 patients (2.9%) (Table 1).

The histological subtypes of the 234 metastatic lesions detected in the 139 patients were: mixed subtype adenocarcinoma in 166 metastases (70.9%); pure BAC subtype in 33 metastases (14.1%); acinar subtype in 2 (0.9%); and papillary subtype in 28 (12.0%). Their sizes are indicated in a histogram (Fig. 3). The median diameter of the lesions was 3 mm.

Comparison between the predominant histological subtypes in the primary tumors and the metastatic tumors

Of the 139 primary tumors diagnosed, 20 tumors (14.4%) contained four subtypes (BAC, papillary, acinar, and solid), 54 tumors (38.8%) contained three subtypes, 60 tumors (43.2%) contained two subtypes, and five tumors (3.6%) were composed of a single subtype. Of the 234 metastatic

Table 1 Characteristics of patients with intrapulmonary metastasis from primary lung adenocarcinoma

Factors	n = 139 (%)
Age (years)†	
<66	65 (46.8)
≥66	74 (53.2)
Sex	
Male	78 (56.1)
Female	61 (43.9)
Smoking history	
Never a smoker	59 (42.4)
Current / previous smoker	80 (57.6)
CEA level (ng/mL)	
<5.0	81 (58.3)
≥5.0	58 (41.7)
Preoperative pulmonary metastasis	
PM0	121 (87.1)
PM1	13 (9.4)
PM2	5 (3.6)
Histological subtype in primary lesion	
Adenocarcinoma, mixed subtype	134 (96.4)
BAC	
Mucinous BAC	0 (0)
Non-mucinous BAC	0 (0)
Acinar adenocarcinoma	0 (0)
Papillary adenocarcinoma	1 (0.7)
Solid adenocarcinoma with mucin production	4 (2.9)
Pathological n classification	
pN0	51 (36.7)
pN1	28 (20.1)
pN2	57 (41.0)
pN3	3 (2.2)
Pathological stage (UICC7)	
Stage IIB	47 (33.8)
Stage IIIA	78 (56.1)
Stage IIIB	9 (6.5)
Stage IV	5 (3.6)
Pathological pulmonary metastasis	
PM1	128 (92.1)
PM2	11 (7.9)
Lymphatic permeation	
Present	90 (64.7)
Absent	49 (35.3)
Vascular invasion	
Present	96 (69.0)
Absent	43 (30.9)
Number of pulmonary metastatic tumors	
1	79 (56.8)
2	22 (15.8)
3	20 (14.4)
More than 5	18 (12.9)

†Age was dichotomized by the median age of 66 year-old.

BAC, bronchioloalveolar carcinoma; CEA, carcinoembryonic antigen; PM0, no metastatic lesion in the lung clinically; PM1, metastatic lesion in the same lobe as the primary lesion; PM2, a metastatic lesion in a different lobe from the primary lesion; UICC, International Union Against Cancer.

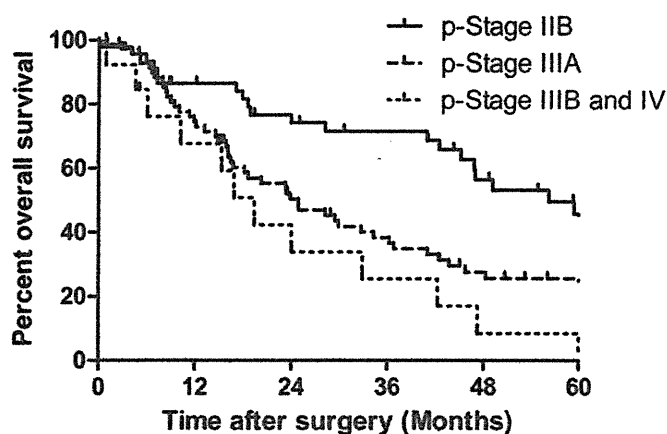


Figure 2 Overall survival curves of patients with intrapulmonary metastasis according to pathological stage (stage IIB, stage IIIA, stage IIIB and IV).

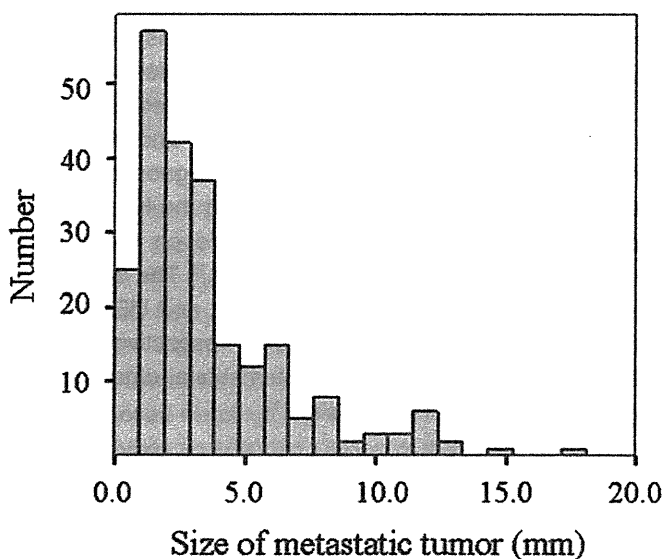


Figure 3 Size histogram of the intrapulmonary metastatic tumors from primary lung cancers. Their median diameter was 3 mm.

tumors, one tumor (0.4%) contained four subtypes, 15 tumors (6.4%) contained three subtypes, 150 tumors (64.1%) contained two subtypes, and 68 tumors (29.1%) were composed of single subtype. We compared the predominant histological subtype of the primary tumors and metastatic tumors in each of the 228 cases in which the primary tumor was a mixed subtype adenocarcinoma (Fig. 4a,b). Focusing on the examination of the metastatic tumor whose diameter was 3 mm or less, we found that the predominant subtype in 76.9% of the metastatic tumors which revealed the BAC predominant in the primary tumor was BAC subtype (Fig. 5a,b). The predominant subtype in 78.6% and 41.3% of the metastatic tumors which showed the predominant acinar subtype and the predominant papillary subtype in the primary tumor, respectively, was also BAC subtype (Fig. 5d,e,g,h).

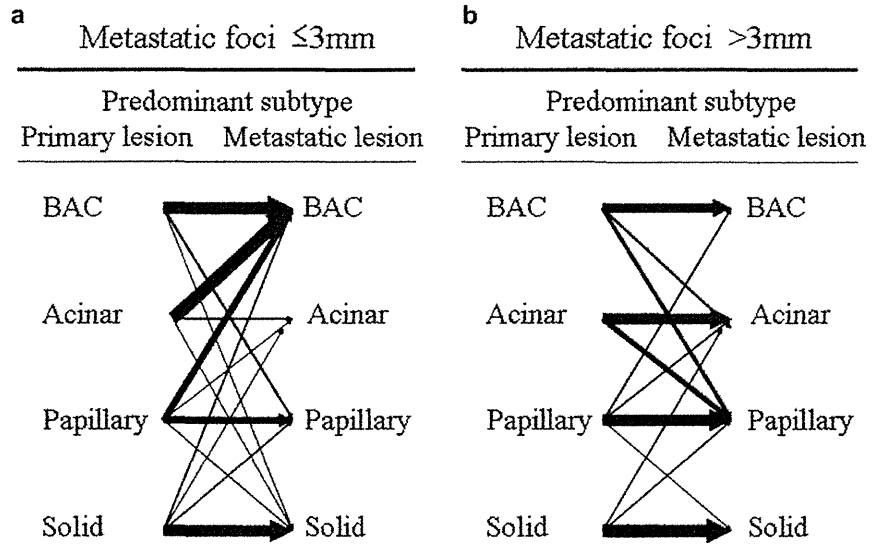


Figure 4 Correlation between predominant histological subtype in the primary lesion and the metastatic lesions according to the size of the metastatic tumors; (a) 3 mm or less; (b) more than 3 mm. The thickness of black arrows reveals the percentage of cases. BAC, bronchioloalveolar carcinoma.

When the histology of the primary tumor was predominantly the solid subtype, the most predominant histological subtype of the metastatic tumors was the solid subtype (70.6%; Fig. 5j,k), the predominant subtype of 11.8% of them was the BAC subtype.

By contrast, the predominant histological subtypes of the metastatic tumors that were more than 3 mm in diameter were basically the same as the predominant subtypes of the primary tumors (BAC/BAC; 58.3%, acinar/acinar; 66.7%, papillary/papillary; 70.0%, solid/solid; 73.3%; Fig. 4b).

Histological heterogeneity index

To investigate how the histological heterogeneity in the primary tumor is maintained in the metastatic tumors, we compared the number of the histological subtypes composing the primary tumors and metastatic tumors in each case and calculated the histological heterogeneity index (see materials and method). The proportion of cases with an index of 1.00, which means that the number of histological subtypes in the primary lesion and the metastatic lesion was the same, was 36.5% in the group with metastatic tumors 3 mm or less and 53.6% in the group with metastases more than 3 mm in diameter. The histological heterogeneity index of the group indicating one subtype 1.00 in both groups, indicating that all metastatic tumors whose primary lesions composed of a single histological subtype also showed single histological subtype (Fig. 6a). Figure. 6b,c,d show comparisons between the two size groups where the number of histological subtypes composing the primary tumor was 2, 3, and 4. The groups indicating 2 subtypes had no statistical difference. However, the histological heterogeneity index of the groups indicating 3 and 4 had significant difference

(Fig. 6c,d, $P = 0.003$ and $P = 0.024$). The mean \pm standard error (SE) of this index in the group of metastatic tumors whose diameter was 3 mm or less and the group of metastatic tumors whose diameter was more than 3 mm was 0.57 ± 0.03 and 0.72 ± 0.04 , respectively (Fig. 6c), and 0.44 ± 0.03 and 0.59 ± 0.08 , respectively (Fig. 6d). These findings imply that as metastatic lesions grow larger their cancer cells display diverse growth patterns resulting in histological heterogeneity as seen in the primary lesions.

We also examined the histological subtype heterogeneity of the primary subcentimeter adenocarcinoma and the metastatic adenocarcinoma matched in size (6–10 mm). The number of histological subtypes in the metastatic tumor (mean \pm SE; 1.94 ± 0.10 , $n = 33$) was significantly higher than that in the primary subcentimeter adenocarcinoma (1.58 ± 0.11 , $n = 40$) (Data not shown; $P = 0.01$).

Comparison of the pathological characteristics of the metastatic lesions according to size

Table 2 shows the differences between the morphological findings in the metastatic tumors according to their size. The metastatic tumors 3 mm or less in diameter were composed of mainly predominant BAC subtype. Less destruction of alveolar septa and less intense stromal reactions including lymphocyte infiltration and fibrosis were observed in the group of metastasis 3 mm or less in diameter, and the differences were statistically significant.

DISCUSSION

Metastasis is the final step in neoplastic progression, and many investigators have made great efforts to elucidate its

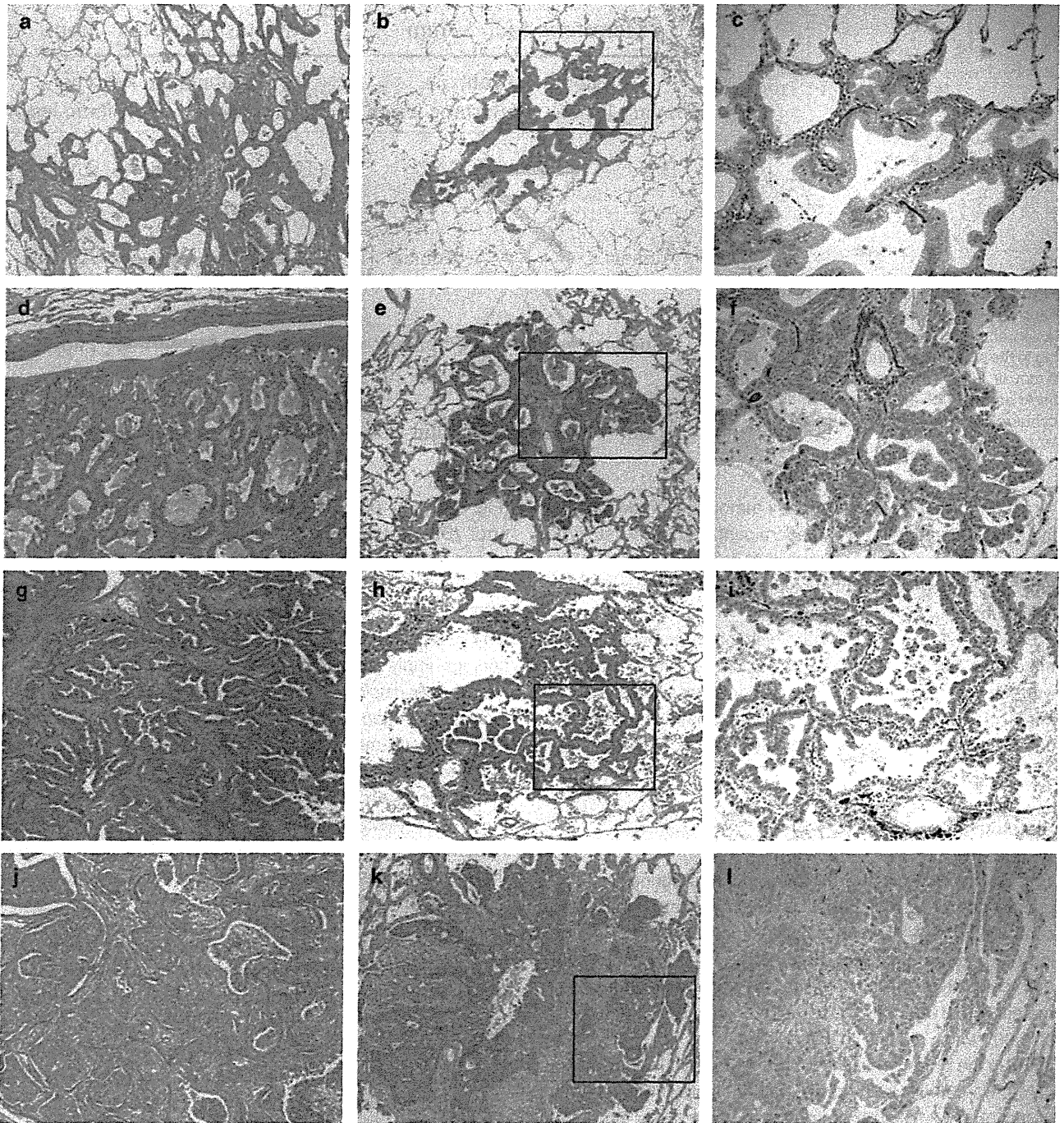
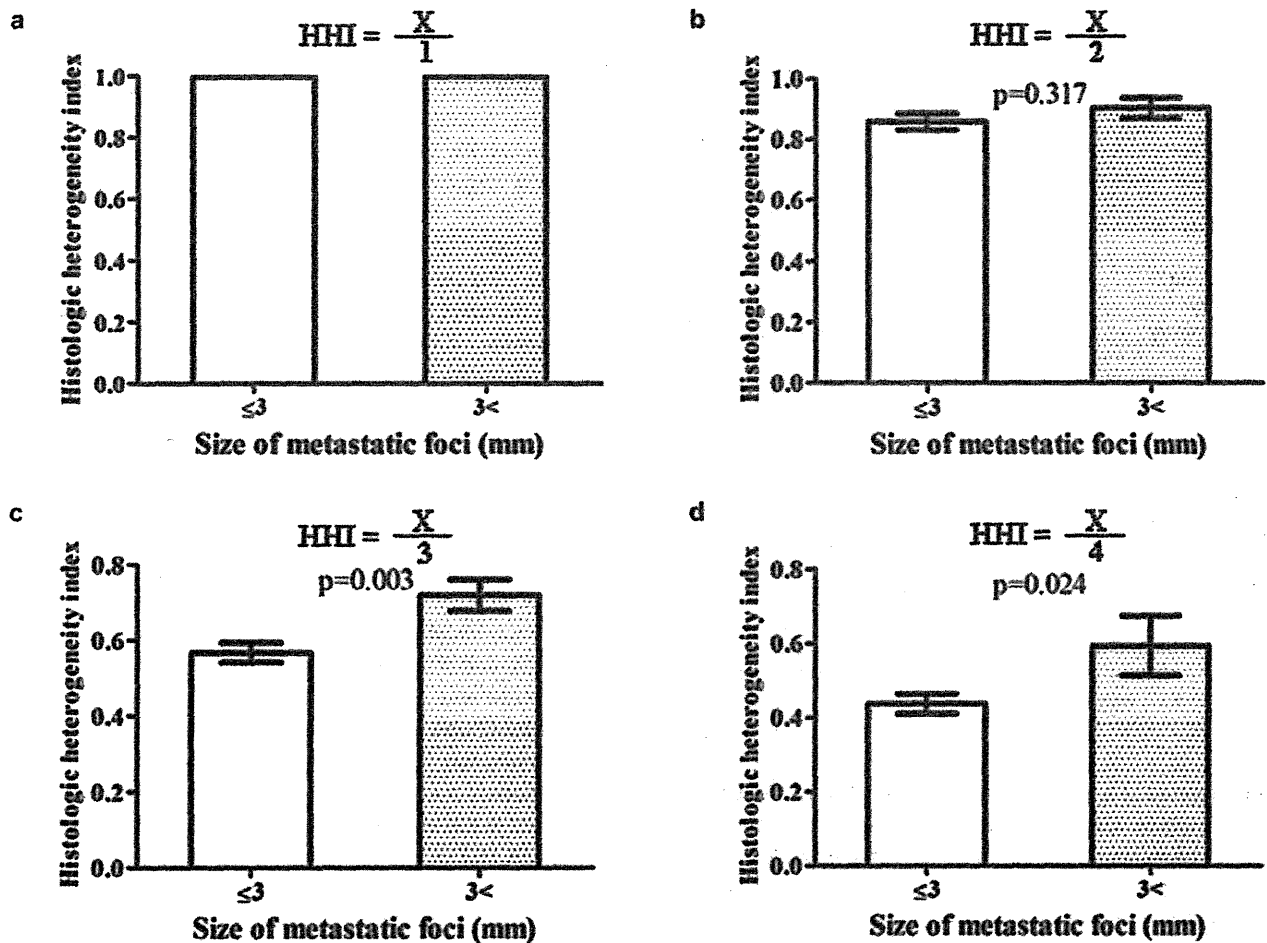


Figure 5 Histopathological features of the primary tumors and metastatic tumors. (a) The primary tumor whose predominant subtype is the bronchioloalveolar carcinoma (BAC) subtype (HE stain). (b) This metastatic tumor from the primary lesion in Figure 5a was mainly composed of a BAC component. (c) Higher magnification view of the tumor in Figure 5b. The pulmonary parenchyma is preserved (Victoria-blue van Gieson (VVG) stain). (d) The primary tumor whose predominant subtype is the acinar adenocarcinoma subtype exhibiting endobronchial growth (HE stain). (e) This metastatic tumor from the primary lesion in Figure 5d was mainly composed of a BAC component (HE stain). (f) Higher magnification view of the metastatic tumor in Figure 5e. The pulmonary parenchyma is preserved (VVG stain). (g) The primary tumor whose predominant subtype is the papillary adenocarcinoma subtype (HE stain). (h) This metastatic tumor from the primary lesion in Figure 5g is predominantly composed of the BAC subtype and has a micropapillary component (HE stain). (i) Higher magnification view of the metastatic tumor in Figure 5h. The pulmonary parenchyma is preserved (VVG stain). (j) The primary tumor whose predominant component is the solid adenocarcinoma subtype (HE stain). (k) This metastatic tumor from the primary lesion in Figure 5j is mainly composed of a solid component (HE stain). (l) Higher magnification view of the metastatic tumor in Figure 5k. The pulmonary parenchyma had been destroyed (VVG stain).



$$\text{Histologic heterogeneity index (HHI)} = \frac{\text{The number of subtype composed of the } \underline{\text{metastatic tumor}}}{\text{The number of subtype composed of the } \underline{\text{primary tumor}}}$$

Figure 6 The histological subtype heterogeneity index of the metastatic tumors was calculated by dividing the number of subtypes composing the metastatic tumor by the number of subtypes in the primary tumor. The metastatic tumors were dichotomized by their median diameter of 3 mm. (a) The comparison in the population indicating a denominator of 1 is demonstrated. The mean of this index in both groups was 1.00. (b) Comparison in the lesion with a denominator of 2 did not reveal a difference ($P = 0.317$). (c) The comparison in the lesion with 3 as the denominator revealed a difference, that was statistically significant ($P = 0.003$). (d) The comparison in the lesion with 4 as the denominator revealed a difference, that was statistically significant ($P = 0.024$).

mechanisms and to control it. Metastasis is a complex, multistep process and it is not easy to grasp the entire metastatic process. Although the morphology of micrometastases of lung cancer in regional lymph nodes has been described, the architecture of the lungs and lymph nodes are clearly different, and that would influence the growth pattern of the cancer cells. Since the aim of this study was to analyze the morphological characteristics of metastatic tumors that grew at a site with the same architecture as the organ that was the site of the primary tumor, we investigated small intrapulmonary metastatic lesions. This is the first report of a study that analyzed a large number of small intrapulmonary metastases in detail by applying the histological classification of primary

adenocarcinoma of the lung to metastatic tumors. The proportion of metastatic tumors whose number of histological subtypes was the same as the number in the primary lesion was 36.5%, even when the size of the metastases was 3 mm or less. As a result, we were able to conclude that most metastatic tumors exhibit histological heterogeneity even in the early phase of the metastatic process. Moreover, the larger the metastatic tumors were, the higher heterogeneity the metastatic tumors showed and these eventually displayed similar histological components to primary adenocarcinoma of the lung. There are several possible explanations for these results. Cancer stem cells (CSC) have been found to be important in tumor initiation, and their importance has

Table 2 Relationship between size and pathological factors in metastatic tumors (n = 234)

Factors	Size of metastatic tumor† (mm)		P-value‡
	≤3	>3	
Predominant subtype			
BAC	76	12	<0.001
Non-BAC	85	61	
Acinar	9	11	
Non-acinar	152	62	0.016
Papillary	52	34	0.036
Non-papillary	109	39	
Solid	24	16	
Non-solid	137	57	0.187
Destruction of alveolar septa			
Absent	106	22	<0.001
Present	55	51	
Lymphocyte infiltration			
None or Mild	112	62	0.013
Moderate or Severe	49	11	
Fibrosis			
None or Mild	140	37	<0.001
Moderate or Severe	21	36	

†Size of metastatic tumor was dichotomized by median size of 3 mm.

‡Pearson's chi-squared test.

BAC, bronchioloalveolar carcinoma.

been reported in a variety of solid tumors. The role of CSC in cancer progression, particularly with respect to metastasis, also has been suggested.^{6,7,16} Pluripotent stem cells from the primary lesion may play an important role in the formation of metastatic foci; therefore these also display histological heterogeneity in the metastatic lesion, as many investigators have suggested in the past. Britta *et al.* suggested that an inherent feature of most breast cancers is that they are sustained throughout the metastatic process Britta *et al.* showed that distant metastases display both the same molecular breast cancer subtype as well as the 70-gene prognosis signature as their primary tumors.¹⁷ Taking their suggestion into consideration, our results showing that as the metastatic tumor becomes larger it increasingly resembles the primary lesion morphologically are acceptable.

However, regarding small metastatic tumors 3 mm or less in diameter, we found a distinctive growth pattern. It is very interesting that the predominant subtype in 47.2% (76/161) of all metastatic tumors 3 mm or less in diameter was BAC subtype. 76.9% of predominant BAC subtype in the primary tumor also resulted in predominant BAC subtype in their metastatic tumor; 78.6% of predominant acinar subtype and 41.7% of predominant papillary subtype in the primary tumor also predominant BAC subtype in the metastatic tumor. This may mean that cancer cells that migrate from primary tumors whose predominant subtype is BAC subtype, acinar subtype, and papillary subtype proliferate along the alveolar septa, thereby giving rise to a lepidic growth pattern in their early metastatic lesions. Generally, the cancer cells that metasta-

sized may proliferate using the pre-existing structure in the target organ in the early phase of metastasis. However, these cells, having pluripotency, generate metastatic foci that recapitulate the morphological heterogeneity of the original tumor as the metastatic tumor grows. On the other hand, both the small and large metastatic tumors of predominant solid adenocarcinoma subtype were the same subtype as the primary tumor. Tumor cells that have metastasized from predominant solid adenocarcinomas may tend to form a solid nest that destroys the alveolar septa even in the early phase of metastasis, so they are considered to display low affinity against pre-existing alveolar septal structure. This phenomenon implies that they belong to another biological spectrum different to the other three subtypes. Actually, some investigators have shown that solid adenocarcinomas express genetic features that are different to those of other subtypes, including a lack of epidermal growth factor receptor mutations, loss of WW domain-containing oxidoreductase, a high frequency of loss of heterozygosity, and a high grade of chromosome instability.^{4,18–22}

Recently, one of the histological subtypes of the micropapillary subtype was suggested to have a correlation with the patient's prognosis and metastasis to the lung. In the current study, among the 139 primary lung adenocarcinoma patient with pulmonary metastasis, 73 patients had a micropapillary component in the adenocarcinoma (52.5%). Forty-two of 161 lesions (26.1%) of the metastatic tumors whose diameters were 3 mm or less included a micropapillary component, whereas the 43.8% (32 of 73 cases) of metastatic tumors whose diameters were more than 3 mm included a micropapillary component. As the metastatic tumors grew in size, the percentage of metastatic tumors with a micropapillary component increased.

Differential diagnosis between intrapulmonary metastasis and multiple primary tumors is always a topic of debate and sometimes difficult to clarify.^{12,23} In this study, we diagnosed the difference by putting emphasis on histological and cytological morphology. Furthermore the finding that the atypia of tumor cells at the peripheral area is fairly mild, which is often observed in the peripheral BAC areas of the primary lung cancer, was not observed in any of the metastatic tumors. The 5 year survival rates of pathological stage IIB, IIIA, and IIIB/IV in this study were 40.8, 25.6, and 8.5%, respectively. These results were similar to the previous international data, supporting the validity of our diagnosis.^{14,15} Girard *et al.* described the importance of comprehensive histological assessment for a differential diagnosis including histological subtyping, cytological features, and stromal characteristics in the case of mature metastasis.^{24,25} However, they analyzed tumor specimens by using array comparative genomic hybridization or mutational profiling of select genes. Genomic examination like this is necessary in future analysis.

The number of histological subtypes in the metastatic tumor was significantly higher than that in the primary sub-centimeter adenocarcinoma. That indicates the difference of growth patterns between the primary tumor and the metastatic tumor in tumor progression.

In conclusion, the results of our study showed that most metastatic tumors from primary adenocarcinoma other than solid adenocarcinomas exhibited a predominant BAC subtype in the early phase and recapitulated the morphological heterogeneity of the original tumor as the tumor grew. This phenomenon reflects the process of tumor progression in intrapulmonary metastasis by primary adenocarcinoma of the lung. These small lung metastases from primary adenocarcinoma may provide as optimal model for elucidating the molecular mechanisms of early metastasis.

ACKNOWLEDGMENTS

This work was supported in part by the Grant-in-Aid for Cancer Research from the Ministry of Health, Labor and Welfare, the Grant for Scientific Research Expenses for Health Labor and Welfare Programs, the Foundation for the Promotion of Cancer Research, 3rd-Term Comprehensive 10-year Strategy for Cancer Control, and Special Coordination Funds for Promoting Science and Technology from the Ministry of Education, Culture, Sports, Science and Technology, the Japanese Government.

REFERENCES

- Olcott CR. Cell types and histologic patterns in carcinoma of the lung; observations on the significance of tumors containing more than one type of cell. *Am J Pathol* 1955; **31**: 975–95.
- Reid JD. The validity and value of histological and cytological classifications of lung cancer. *Cancer* 1961; **14**: 673–98.
- Travis W, Coblby T, Corrin B, Shimosato Y, Brambilla E. *Pathology and Genetics of Tumours of the Lung, Pleura, Thymus and Heart*, 3rd edn. Berlin: Springer Verlag, 1999.
- Motoi N, Szoke J, Riely GJ *et al*. Lung adenocarcinoma: Modification of the 2004 WHO mixed subtype to include the major histologic subtype suggests correlations between papillary and micropapillary adenocarcinoma subtypes, EGFR mutations and gene expression analysis. *Am J Surg Pathol* 2008; **32**: 810–27.
- Colby T. *Tumors of the Lower Respiratory Tract*. Washington, DC: American Registry of Pathology, 1994.
- Balic M, Lin H, Young L *et al*. Most early disseminated cancer cells detected in bone marrow of breast cancer patients have a putative breast cancer stem cell phenotype. *Clin Cancer Res* 2006; **12**: 5615–21.
- Li F, Tiede B, Massague J, Kang Y. Beyond tumorigenesis: Cancer stem cells in metastasis. *Cell Res* 2007; **17**: 3–14.
- Bonnet D, Dick JE. Human acute myeloid leukemia is organized as a hierarchy that originates from a primitive hematopoietic cell. *Nat Med* 1997; **3**: 730–7.
- Al-Hajj M, Clarke MF. Self-renewal and solid tumor stem cells. *Oncogene* 2004; **23**: 7274–82.
- Eccles SA, Welch DR. Metastasis: Recent discoveries and novel treatment strategies. *Lancet* 2007; **369**: 1742–57.
- Quint LE, Tummala S, Brisson LJ *et al*. Distribution of distant metastases from newly diagnosed non-small cell lung cancer. *Ann Thorac Surg* 1996; **62**: 246–50.
- Martini N, Melamed MR. Multiple primary lung cancers. *J Thorac Cardiovasc Surg* 1975; **70**: 606–12.
- UICC. *TNM Classification of Malignant Tumours*, 7th edn. Geneva: Blackwell Publishing Ltd, 2009.
- Rami-Porta R, Ball D, Crowley J *et al*. The IASLC Lung Cancer Staging Project: Proposals for the revision of the T descriptors in the forthcoming (seventh) edition of the TNM classification for lung cancer. *J Thorac Oncol* 2007; **2**: 593–602.
- Postmus PE, Brambilla E, Chansky K *et al*. The IASLC Lung Cancer Staging Project: Proposals for revision of the M descriptors in the forthcoming (seventh) edition of the TNM classification of lung cancer. *J Thorac Oncol* 2007; **2**: 686–93.
- Brabletz T, Jung A, Spaderna S, Hlubek F, Kirchner T. Opinion: Migrating cancer stem cells – an integrated concept of malignant tumour progression. *Nat Rev Cancer* 2005; **5**: 744–9.
- Weigelt B, Hu Z, He X *et al*. Molecular portraits and 70-gene prognosis signature are preserved throughout the metastatic process of breast cancer. *Cancer Res* 2005; **65**: 9155–8.
- Zakowski MF, Hussain S, Pao W *et al*. Morphologic features of adenocarcinoma of the lung predictive of response to the epidermal growth factor receptor kinase inhibitors erlotinib and gefitinib. *Arch Pathol Lab Med* 2009; **133**: 470–7.
- Ding L, Getz G, Wheeler DA *et al*. Somatic mutations affect key pathways in lung adenocarcinoma. *Nature* 2008; **455**: 1069–75.
- Chantranuwat C, Sriuranpong V, Huapai N *et al*. Histopathologic characteristics of pulmonary adenocarcinomas with and without EGFR mutation. *J Med Assoc Thai* 2005; **88** (Suppl. 4):S322–9.
- Donati V, Fontanini G, Dell'Omodarme M *et al*. WWOX expression in different histologic types and subtypes of non-small cell lung cancer. *Clin Cancer Res* 2007; **13**: 884–91.
- Ninomiyama H, Nomura K, Satoh Y *et al*. Genetic instability in lung cancer: Concurrent analysis of chromosomal, mini- and microsatellite instability and loss of heterozygosity. *Br J Cancer* 2006; **94**: 1485–91.
- Shen KR, Meyers BF, Larner JM, Jones DR. Special treatment issues in lung cancer: ACCP evidence-based clinical practice guidelines (2nd edition). *Chest* 2007; **132**: 290S–305S.
- Girard N, Deshpande C, Lau C *et al*. Comprehensive histologic assessment helps to differentiate multiple lung primary non-small cell carcinomas from metastases. *Am J Surg Pathol* 2009; **33**: 1752–64.
- Girard N, Ostrovskaya I, Lau C *et al*. Genomic and mutational profiling to assess clonal relationships between multiple non-small cell lung cancers. *Clin Cancer Res* 2009; **15**: 5184–90.

Long-Term Outcome and Late Recurrence in Patients with Completely Resected Stage IA Non-small Cell Lung Cancer

Ryo Maeda, MD,* Junji Yoshida, MD,* Genichiro Ishii, MD,† Keiju Aokage, MD,*
Tomoyuki Hishida, MD,* Mitsuyo Nishimura, MD,* Yutaka Nishiwaki, MD,* and Kanji Nagai, MD*

Background: The purpose of this study was to quantify the risk of late recurrence in patients with stage IA non-small cell lung cancer (NSCLC) who remained recurrence-free for more than 5 years after resection.

Methods: Between August 1992 and December 2002, a total of 519 patients with stage IA NSCLC underwent complete resection at our institution. Recurrence-free probability was measured from the benchmark of 5 years after primary tumor resection to the date of first recurrence or last follow-up using the Kaplan-Meier method.

Results: Of a total of 519 patients, 434 remained recurrence-free for 5 years. Among these, 21 (4.8%) developed late recurrence more than 5 years after resection. Recurrence-free interval ranged from 1 to 53 months, and the median recurrence-free interval was 14 months from the benchmark of 5 years after primary tumor resection. The 5-year recurrence-free probability from the benchmark was 93%. Multivariate Cox analysis demonstrated that vascular invasion significantly influenced late recurrence ($p = 0.038$). The 5-year recurrence-free probability from the benchmark was 84% for patients with vascular invasion and 95% for patients without vascular invasion ($p < 0.001$).

Conclusions: Patients with stage IA NSCLC with vascular invasion harbor a significant risk of late recurrence more than 5 years after complete resection. In patients with stage IA NSCLC with vascular invasion, 5 years without recurrence is not sufficient to conclude that NSCLC is cured. In contrast, patients without vascular invasion may be declared to be cured at 5 years after resection if they are recurrence-free.

Key Words: Non-small cell lung cancer, Late recurrence, Stage IA, Thoracic surgery.

(*J Thorac Oncol.* 2010;5: 1246–1250)

In Japan, the recent increase in the frequency of detecting stage IA non-small cell lung cancer (NSCLC) can be attributed to a nationwide mass screening system.¹ For these

early-stage NSCLC patients, complete surgical resection provides the best possibility of cure.

The reported 5-year survival rates of patients with resected stage IA NSCLC ranged from 80 to 93%.^{2–6} Although many researchers have studied postoperative recurrence and its risk factors in patients with stage IA NSCLC within the first 5 years after resection,¹ information about the survival of such patients beyond 5 years is limited.^{4,7}

This study reviewed a large series of consecutive patients with stage IA NSCLC who had been operated on in a single institution. Because of its long follow-up period, this study was able to focus on long-term outcome and late recurrence. The purposes of this study were to quantify the risk of late recurrence in patients with stage IA NSCLC who survived more than 5 years after resection and to suggest long-term follow-up strategy.

PATIENTS AND METHODS

A total of 541 patients with pathologic stage IA NSCLC, who underwent complete resection between August 1992 and December 2002, were identified in our departmental database. Complete resection was defined as cancer-free surgical margins both grossly and histologically. Twenty-two patients were excluded because of (1) preoperative chemotherapy or radiation therapy, or both ($n = 6$), and (2) low-grade pulmonary malignancies including carcinoid tumor, mucoepidermoid carcinoma, or adenoid cystic carcinoma ($n = 16$). The remaining 519 patients were the study subjects.

Pathologic Evaluations

Histologic type was determined according to the World Health Organization classification,⁸ and histologic grade was diagnosed and categorized into well, moderately, and poorly differentiated carcinomas according to the degree of structural and cytologic atypia. Differentiation in squamous cell carcinoma was determined based on degree of keratinization, intercellular bridges, and squamous pearl formation. Poor differentiation in adenocarcinoma was defined as a solid pattern tumor without any clear gland formation. Blood and lymphatic vessels were identified by hematoxylin-eosin, elastin (Victoria blue-van Gieson), and D2-40 immunohistochemical stainings. Vascular invasion and lymphatic permeation were histologically diagnosed by identifying cancer cells within blood and lymphatic vessels, respectively. Disease stages were based on the tumor, node,

*Department of Thoracic Oncology, National Cancer Center Hospital East, and †Department of Pathology, Research Center for Innovative Oncology, National Cancer Center Hospital East, Kashiwa, Chiba, Japan.

Disclosure: The authors declare no conflicts of interest.

Address for correspondence: Junji Yoshida, MD, PhD, Department of Thoracic Oncology, National Cancer Center Hospital East, 6-5-1, Kashiwanoha, Kashiwa, Chiba 277-8577, Japan. E-mail: jyoshida@east.ncc.go.jp

Copyright © 2010 by the International Association for the Study of Lung Cancer

ISSN: 1556-0864/10/0508-1246

metastasis classification of the International Union Against Cancer, 7th edition.⁹

Patient Follow-Up

We examined patients at 3-month intervals for the first 2 years and typically at 6-month intervals thereafter on an outpatient basis. After 5 years from resection, we aimed at continuing follow-up annually for at least 5 more years. The follow-up evaluation included physical examination, chest radiography, and blood examination including pertinent tumor markers. Whenever any symptoms or signs of recurrence were detected, further evaluations were performed, including computed tomography scans of the chest and abdomen, brain magnetic resonance imaging, and bone scintigraphy. Since 2004, integrated positron emission tomography and computed tomography have also been performed when appropriate.

We diagnosed recurrence based on compatible physical examination and diagnostic imaging findings and confirmed histologically when clinically feasible. The date of recurrence was defined as the date of histologic proof or, in cases diagnosed based upon clinicoradiological findings, the date of identification by a physician.

In this study, we used the following criteria to define and differentiate metachronous primary lung cancers based on the modified criteria of Martini and Melamed¹⁰: tumors histologically different from the primary tumor and occurring at anatomically separate sites or tumors histologically the same as the primary tumor without systemic metastases or mediastinal spread, developing after a tumor-free interval of at least 2 years.

We classified recurrence into two categories: (1) locoregional disease was clinically or radiologically manifest in the ipsilateral mediastinum, pleural cavity, supraclavicular lymph nodes, or bronchial stump, and (2) distant disease was located in the contralateral lung or outside the hemithorax of the primary lesion.

Clinicopathologic Information

We reviewed the medical records of each patient for clinicopathologic information including age (dichotomized at the median age of 65 years), gender, smoking history (non-smoker or ever-smoker), preoperative serum carcinoembryonic antigen level (cutoff at the normal upper limit of 5 ng/ml), extent of resection, maximum tumor dimension on the resected specimen (≤ 2 cm or > 2 cm), histology, histologic differentiation (well differentiated or moderately/poorly differentiated), lymphatic permeation (presence or absence), and vascular invasion (presence or absence).

Statistical Analysis

The length of overall survival was defined as the interval in months between the date of surgical resection and the date of either death or the last follow-up. Recurrence-free probability was calculated in months from the point of 5 years after resection to the date of the first recurrence or last follow-up. To calculate recurrence-free probability, patients who died without recurrence or who were known to be recurrence-free at the date of last contact were censored. For univariate analyses, all cumulative survival rates were estimated using the Kaplan-Meier method, and differences in

variables were evaluated using the log-rank test. Multivariate analyses were performed using the Cox proportional hazards regression model. Forward and backward stepwise procedures were used to determine independent predictors. Annual recurrence rates were determined by dividing the number of recurrences in a certain year (r) by the sum of the number of patients without recurrence for the entire year (p), the number of recurrent patients in the year (r), and a half of the number of patients without recurrence followed for less than the entire year (c) according to the following formula:

$$\text{Annual recurrence rate} = r/p + r + 0.5(c)^{11-13}$$

All p values reported were two sided, and the significance level was set at less than 0.05. Analyses were performed using the statistical software SPSS 11.0 (Dr. SPSS II for Windows, standard version 11.0, SPSS Inc., Chicago, IL) and GraphPad Prism (Prism for Windows, Version 5.02, GraphPad Software, Inc., La Jolla, CA).

Data collection and analyses were approved, and the need to obtain informed consent from each patient was waived by the institutional review board in August 2009.

RESULTS

Table 1 shows the clinicopathologic characteristics of 519 patients with stage IA NSCLC. The overall survival rates of the 519 patients with stage IA NSCLC at 5 and 10 years after resection were 88.0% and 74.4%, respectively. By 5 years after resection, 35 had died of disease and 32 had died of other causes. Eighteen were alive with disease. The remaining 434 patients were alive and recurrence-free for the first 5 years. The median follow-up period of these 5-year recurrence-free survivors was 44 months after the first 5 years (range, 1–86 months). Among the 434 patients, 21 (4.8%) developed recurrence. Recurrence was locoregional in 9 patients and distant in 12 patients (Table 2).

From the point of 5 years after primary tumor resection, the recurrence-free intervals ranged from 1 to 53 months, and the median recurrence-free interval was 14 months for the 5-year recurrence-free survivors. For these survivors, the recurrence-free probability was 93.3% at 5 years after the first 5 years. Table 3 lists the recurrence-free probabilities at 5 years after the 5-year benchmark date according to clinicopathologic features. On univariate analysis, ever-smoker, nonadenocarcinoma histology, poor/moderate histologic differentiation, and presence of vascular invasion were shown to be significant risk factors for late recurrence beyond 5 years. Recurrence-free probability was not statistically different between groups stratified by age, gender, preoperative serum carcinoembryonic antigen level, extent of resection, maximum tumor dimension on the resected specimen, histology, or lymphatic permeation.

On multivariate analysis with the Cox regression model, the presence of vascular invasion remained a statistically significant predictor for late recurrence more than 5 years after surgery (hazard ratio: 2.74, $p = 0.038$; Table 4). The recurrence-free probability at 5 years after the first 5 years for patients without vascular invasion was 95.2%, whereas that for patients with vascular invasion was 83.7% ($p < 0.001$; Figure 1).

TABLE 1. Clinicopathologic Characteristics of 519 Patients with Stage IA NSCLC

Characteristic	No. of Patients (%)
Overall number	519
Age (yr)	
<65	258 (49.7)
≥65	261 (50.3)
Gender	
Female	244 (47.0)
Male	275 (53.0)
Smoking habits	
Nonsmoker	236 (45.5)
Ever-smoker	283 (54.5)
CEA	
Within normal range	385 (74.2)
Elevated	132 (25.4)
Not measured	2
Extent of resection	
Lobectomy	467 (90.0)
Segmentectomy or wedge resection	51 (9.8)
Pneumonectomy	1
Tumor size (mm)	
≤20	217 (41.8)
>20	302 (58.2)
Histologic type	
Adenocarcinoma	416 (80.2)
Squamous cell carcinoma	80 (15.4)
Large cell carcinoma	14 (2.7)
Adenosquamous carcinoma	9 (1.7)
Histological differentiation	
Well differentiated	288 (55.5)
Moderately/poorly differentiated	231 (44.5)
Lymphatic permeation	
Absent	431 (83.0)
Present	88 (17.0)
Vascular invasion	
Absent	423 (81.5)
Present	96 (18.5)

Numbers in parentheses are percentages.
CEA, preoperative serum carcinoembryonic antigen level, normal upper limit at 5 ng/ml.

The recurrence rate per year peaked in the second year after resection and gradually decreased thereafter but continued at a rate of 0.5 to 2% beyond 5 years until 10 years after resection (Figure 2). Figure 3 shows the recurrence rates per year stratified by vascular invasion status. The recurrence rate per year in patients without vascular invasion peaked in the third year after resection but decreased thereafter, whereas the recurrence rate per year in patients with vascular invasion peaked in the second year after resection and continued at a higher rate of 2 to 10% until 9 years from resection.

DISCUSSION

In patients with NSCLC, 5-year disease-free survival is currently the benchmark of cure. However, there are two issues with the follow-up of patient with NSCLC: When can cure be

TABLE 2. Initial Site of Failure in 21 Patients with Late Recurrence

Initial Site	N
Distant metastasis	12
Multiple organ metastases	5
Single organ metastasis	7
Multiple lung metastases	2
Brain	2
Bone	1
Liver	1
Adrenal gland	1
Locoregional recurrence	9
Mediastinal lymph nodes	4
Pleural dissemination	2
Supraclavicular lymph nodes	2
Bronchial stump	1

declared with confidence? For how long should follow-up examinations be continued? To examine these questions, we quantified the risk of late recurrence in patients with stage IA NSCLC who survived without recurrence for more than 5 years after resection. We were able to investigate long-term outcome in a large series of patients with stage IA NSCLC because of the long follow-up period (the median follow-up period after resection of 5-year recurrence-free survivors was 104 months).

Recurrence in NSCLC is most frequent during the first 2 years after resection, and more than 80% of recurrence occurs within this time.^{4,14} In the current study, the recurrence rate per year in the entire cohort peaked in the second year after resection and gradually decreased thereafter (Figure 2).

Okada et al.¹⁵ reported a 10-year survival rate of 91% among 421 5-year survivors of stage I to IIIB NSCLC, and Martini et al.¹⁶ reported a 10-year survival rate of 92.4% among 686 5-year survivors of stage I to IIIA disease. Both studies concluded that late recurrence beyond 5 years was infrequent. They concluded that 5 years after resection is sufficient to declare that an NSCLC patient is cured because of the low recurrence incidence.

In this study involving only stage IA patients, the number of patients studied was 519, and 434 of them were recurrence-free at 5 years after resection. Recurrence developed in 4.8% of the 5-year recurrence-free survivors. Delayed recurrence was locoregional in 2.1% and distant in 2.8% of patients. These recurrence rates in patients with stage IA NSCLC were lower than those of the previous studies, including stage IB or higher patients.

Okada et al.¹⁵ reported that disease stage, nodal status, gender, or histology did not affect long-term survival. By multivariate analyses, however, we identified one independently significant predictor of late recurrence in stage IA 5-year recurrence-free survivors: the presence of vascular invasion (hazard ratio: 2.74). The recurrence rate per year in patients without vascular invasion peaked at a rate of 2% in the third year after resection and gradually decreased thereafter. Although the recurrence rates per year in these patients did not reach zero until the 10th year after resection, they were less than 2% beyond 3 years after resection. In patients with vascular invasion, the

TABLE 3. Recurrence-Free Probability Beyond 5 yr After Complete Resection and Clinicopathologic Characteristics

Characteristic	No. of Patients (%)	No. of Recurrences (%)	Recurrence-Free Probabilities from 5-yr Benchmark at 5 yr (%)	Univariate <i>p</i> Value
Overall number	434	21 (4.8)	93.3	
Age (yr)				
<65	237 (54.6)	9 (3.8)	95.2	
≥65	197 (45.4)	12 (6.1)	90.7	0.211
Gender				
Female	222 (51.2)	7 (3.2)	95.4	
Male	212 (48.8)	14 (6.6)	91.2	0.072
Smoking habits				
Nonsmoker	217 (50.0)	5 (2.3)	97.3	
Ever-smoker	217 (50.0)	16 (7.4)	88.8	0.009 ^a
CEA				
Within normal range	337 (77.6)	15 (4.5)	94.1	
Elevated	95 (21.9)	6 (6.3)	90.1	0.299
Not measured	2	0		
Extent of resection				
Lobectomy or pneumonectomy	395 (91.0)	19 (4.8)	93.5	
Segmentectomy or wedge resection	39 (9.0)	2 (5.1)	90.1	0.805
Tumor size (mm)				
≤20	174 (40.1)	7 (4.0)	94.1	
>20	260 (59.9)	14 (5.4)	92.9	0.400
Histologic type				
Nonsquamous cell carcinoma	376 (86.6)	14 (3.7)	95.1	
Squamous cell carcinoma	58 (13.4)	7 (12.1)	81.1	0.006 ^a
Histological differentiation				
Well differentiated	263 (60.6)	8 (3.4)	96.0	
Moderately/poorly differentiated	171 (39.4)	13 (8.2)	88.2	0.009 ^a
Lymphatic permeation				
Absent	372 (85.7)	16 (3.0)	93.8	
Present	62 (14.3)	5 (8.1)	90.1	0.197
Vascular invasion				
Absent	369 (85.0)	12 (3.3)	95.2	
Present	65 (15.0)	9 (13.8)	83.7	0.006 ^a

^aIndicates significance.

CEA, preoperative serum carcinoembryonic antigen level, normal upper limit at 5 ng/ml.

TABLE 4. Multivariate Analysis of Risk Factors for Late Recurrence Beyond 5 yr

Factors	Unfavorable	Favorable	Hazard Ratio	95% CI	<i>p</i>
Smoking habits	Ever-smoker	Nonsmoker	2.166	0.689–6.815	0.186
Histologic type	Squamous cell carcinoma	Nonsquamous cell carcinoma	1.612	0.567–4.584	0.370
Histological differentiation	Moderately/poorly differentiated	Well differentiated	1.318	0.436–3.982	0.625
Vascular invasion	Present	Absent	2.742	1.058–7.108	0.038 ^a

^aIndicates significance.

CEA, preoperative serum carcinoembryonic antigen level, normal upper limit at 5 ng/ml; CI, confidence interval.

recurrence rates per year peaked in the second year after resection and continued at a higher rate of 2 to 10% beyond 5 years until 9 years after resection (Figure 3). The recurrence-free probability after the first 5 years for patients with vascular invasion was significantly higher than that for patients without vascular invasion ($p < 0.001$). These findings indicate that in patients with stage IA NSCLC without vascular invasion, 5 years may be sufficient to declare that the patients are cured. In

contrast, patients with stage IA NSCLC with vascular invasion need follow-up until at least 9 years after resection.

This study was retrospectively performed, and there was limitation in the analysis. We only focused on late recurrence risk beyond 5 years after resection and failed to analyze subsequent interventions and their outcomes after recurrent NSCLC diagnosis. The current study shows that cancer recurrence still occurs after 5 years although at a lower annual rate than during

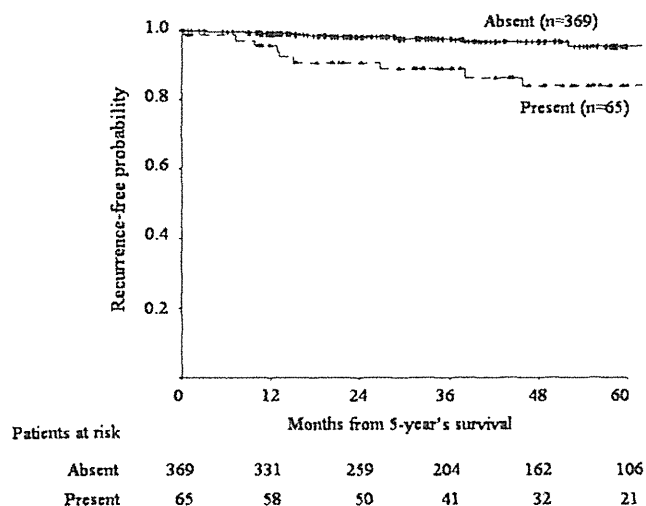


FIGURE 1. Recurrence-free probability curves from the point of 5 years after resection according to intratumoral vascular invasion.

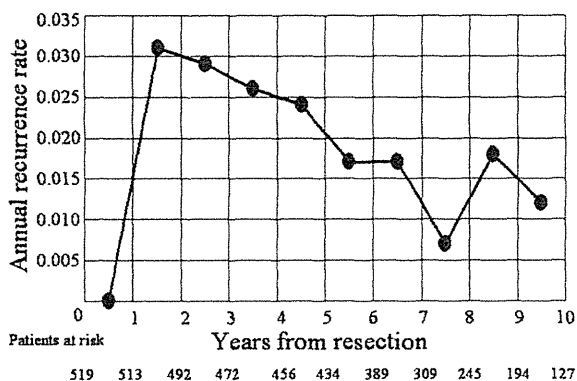


FIGURE 2. Annual recurrence rates after resection in the entire cohort.

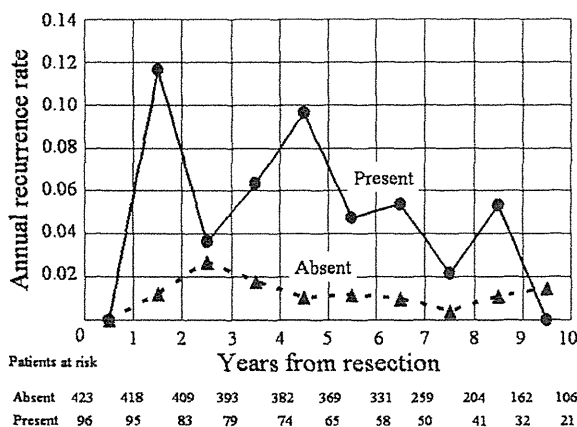


FIGURE 3. Annual recurrence rates after resection according to intratumoral vascular invasion.

the first 5 years. This may justify further surveillance, but patient benefit from identifying recurrence by annual follow-up beyond 5 years after resection was unclear.

In conclusion, 4.8% of patients with resected stage IA NSCLC who remained recurrence-free for the first 5 years later developed recurrence. In patients with stage IA NSCLC with vascular invasion, 5 years without recurrence is not sufficient to conclude that NSCLC is cured. In contrast, patients without vascular invasion may be declared to be cured at 5 years after resection if they are recurrence-free.

ACKNOWLEDGMENTS

Supported in part by a Grant-in-Aid for Cancer Research from the Ministry of Health, Labor and Welfare, Japan.

The authors thank Mr. Roderick J. Turner and Prof. J. Patrick Barron of the Department of International Medical Communications of Tokyo Medical University for the review of this manuscript.

REFERENCES

1. Watanabe Y. Substaging of stage I—a commentary. *Lung Cancer* 2003;42:59–61.
2. Williams DE, Pairolero PC, Davis CS, et al. Survival of patients surgically treated for stage I lung cancer. *J Thorac Cardiovasc Surg* 1981;82:70–76.
3. Naruke T, Goya T, Tsuchiya R, et al. Prognosis and survival in resected lung carcinoma based on the new international staging system. *J Thorac Cardiovasc Surg* 1988;96:440–447.
4. Martini N, Bains MS, Burt ME, et al. Incidence of local recurrence and second primary tumors in resected stage I lung cancer. *J Thorac Cardiovasc Surg* 1995;109:120–129.
5. Kodama K, Doi O, Higashiyama M, et al. Intentional limited resection for selected patients with T1 N0 M0 non-small-cell lung cancer: a single-institution study. *J Thorac Cardiovasc Surg* 1997;114:347–353.
6. Koike T, Yamato Y, Yoshiya K, et al. Intentional limited pulmonary resection for peripheral T1 N0 M0 small-sized lung cancer. *J Thorac Cardiovasc Surg* 2003;125:924–8.
7. Pasini F, Pelosi G, Valduga F, et al. Late events and clinical prognostic factors in stage I non small cell lung cancer. *Lung Cancer* 2002;37:171–177.
8. Travis WD, Brambilla E, Muller-Hermelink HK, et al. World Health Organization Classification of Tumors: Pathology and Genetics of Tumors of the Lung, Pleura, Thymus and Heart. Lyon: IARC Press, 2004.
9. Goldstraw P, Crowley J, Chansky K, et al. The IASLC Lung Cancer Staging Project: proposals for the revision of the TNM stage groupings in the forthcoming (seventh) edition of the TNM classification of malignant tumours. *J Thorac Oncol* 2007;2:706–714.
10. Martini N, Melamed MR. Multiple primary lung cancers. *J Thorac Cardiovasc Surg* 1975;70:606–612.
11. Dawson B, Trapp R. Basic & Clinical Biostatistics (LANGE Basic Science). 4th Ed. Norwalk, CT: Appleton and Lange, 2004. Pp. 225–226.
12. Kiba T, Inamoto T, Nishimura T, et al. The reversal of recurrence hazard rate between ER positive and negative breast cancer patients with axillary lymph node dissection (pathological stage I-III) 3 years after surgery. *BMC Cancer* 2008;8:323.
13. Kennecke HF, Olivetto IA, Speers C, et al. Late risk of relapse and mortality among postmenopausal women with estrogen responsive early breast cancer after 5 years of tamoxifen. *Ann Oncol* 2007;18:45–51.
14. al-Kattan K, Sepsas E, Fountain SW, et al. Disease recurrence after resection for stage I lung cancer. *Eur J Cardiothorac Surg* 1997;12: 380–384.
15. Okada M, Nishio W, Sakamoto T, et al. Long-term survival and prognostic factors of five-year survivors with complete resection of non-small cell lung carcinoma. *J Thorac Cardiovasc Surg* 2003;126: 558–562.
16. Martini N, Rusch VW, Bains MS, et al. Factors influencing ten-year survival in resected stages I to IIIa non-small cell lung cancer. *J Thorac Cardiovasc Surg* 1999;117:32–36.