

toxicity in third-line treatment (26). In a BR.21 trial, erlotinib demonstrated survival benefits when administered as a second- or third-line therapy, compared to a placebo (OS: 6.7 months vs. 4.7 months, respectively) (7) This landmark trial included 49% of patients as receiving third-line therapy, thus treatment with erlotinib is recommended as a third-line therapy for patients with a PS of 0–3 who have not received prior EGFR-TKIs. These data are not sufficient to make a recommendation for or against using a cytotoxic agent as a third-line therapy. However, there is no prospective trial of cytotoxic agents in that setting, which encouraged us to conduct the present study.

Comparing the present data with retrospective analyses in clinical practice (11, 14, 26), the DCR of 61.0% was much higher, and the PFS of 3.0 months and the OS of 12.6 months was slight superior. Promising date of this study has several limitations. First, the majority of the enrolled patients in this study had PS of 0-1. Second, the indolent nature of the subjects' diseases might good. Third, 7 (17%) patients harboring *EGFR* mutation had excellent prognosis (median OS of 16.7 months, range 10.8-27.2). If this regimen will apply in daily

practice outside of clinical trial, further evaluation of this regimen is warranted.

## **Conclusion**

In conclusion, amrubicin is a promising agent with effective disease control and manageable toxicity as a third- or fourth-line treatment for advanced NSCLC. This study provides relevant data for routine practice and future prospective trials evaluating third- or fourth-line treatment strategies for advanced NSCLC.

**Acknowledgments:** This study is registered with University Hospital Medical Information Network Clinical Trial Registry (<http://www.umin.ac.jp/ctr/index.htm>, identification number UMIN C000002306).

## References

1. Jemal A, Siegel R, Ward E et al. Cancer statistics 2009. *CA Cancer J Clin* 2009;59:225–249.
2. Pfister DG, Johnson DH, Azzoli CG et al. American Society of Clinical Oncology. American Society of Clinical Oncology treatment of unresectable non-small-cell lung cancer guideline: update 2003 *J Clin Oncol* 2004;22:330–353.
3. Schiller JH, Harrington D, Belani CP et al. Eastern Cooperative Oncology Group. Comparison of four chemotherapy regimens for advanced non-small-cell lung cancer. *N Engl J Med* 2002;346:92–98.
4. NSCLC Meta-Analyses Collaborative Group. Chemotherapy in addition to supportive care improves survival in advanced non-small-cell lung cancer: a systematic review and meta-analysis of individual patient data from 16 randomized controlled trials. *J Clin Oncol* 2008;26:4617–4625.
5. Oizumi S, Kobayashi K, Inoue A et al. Quality of Life with Gefitinib in Patients with EGFR-Mutated Non-Small Cell Lung Cancer: Quality of Life Analysis of North East Japan Study Group 002 Trial. *Oncologist* 2012;17:863-887.
6. Shepherd FA, Dancey J, Ramlau R et al. Prospective randomized trial of docetaxel versus best supportive care in patients with non-small cell lung cancer previously treated with platinum-based chemotherapy. *J Clin Oncol* 2000;18:2095–2103.
7. Shepherd FA, Rodrigues Pereira J, Cieleaunu T et al. National Cancer Institute of Canada Clinical Trials Group. Erlotinib in previously treated non-small-cell lung cancer. *N Engl J Med* 2005;353:123–132.

8. Hanna N, Shepherd FA, Fossella FV et al. Randomized phase III trial of pemetrexed versus docetaxel in patients with non-small-cell lung cancer previously treated with chemotherapy. *J Clin Oncol* 2004;22:1589–1597.
9. Kim ES, Hirsh V, Mok T et al. Phase III randomized, open-label, parallel-group study of oral gefitinib (IRESSA) versus intravenous docetaxel in patients with locally advanced or metastatic non-small-cell lung cancer who have previously received platinum-based chemotherapy (INTEREST). *Lancet* 2008;372:1809–1818.
10. Murillo JR, Koeller J Jr. Chemotherapy Given Near the End of Life by Community Oncologists for Advanced Non-Small Cell Lung Cancer. *Oncologist* 2006;11:1095–1099.
11. Asahina H, Sekine I, Horinouchi H et al. Retrospective analysis of third-line and fourth-line chemotherapy for advanced non-small-cell lung cancer. *Clin Lung Cancer* 2012;13:39–43.
12. de Marinis F, Grossi F. Clinical evidence for second- and third-line treatment options in advanced non-small cell lung cancer. *Oncologist* 2008;13 (Suppl. 1):14–20.
13. Azzoli CG, Baker S Jr, Temin S et al. American Society of Clinical Oncology. American Society of Clinical Oncology Clinical Practice Guideline Update on Chemotherapy for Stage IV Non-Small-Cell Lung Cancer. *J Clin Oncol* 2009;27:6251–6266.
14. Girard N, Jacoulet P, Gaiet M et al. Third-line chemotherapy in advanced non-small cell lung cancer: identifying the candidates for routine practice. *J Thorac Oncol* 2009;4:1544–1549.

15. Hanada M, Mizuno S, Fukushima A et al. A new antitumor agent amrubicin induces cell growth inhibition by stabilizing topoisomerase II-DNA complex. *Jpn J Cancer Res* 1998;89:1229–1238.
16. Inoue A, Sugawara S, Yamazaki K et al. Randomized phase II trial comparing amrubicin with topotecan in patients with previously treated small-cell lung cancer: North Japan Lung Cancer Study Group Trial 0402. *J Clin Oncol* 2008;26:5401–5406.
17. Sawa T, Yana T, Takada M et al. Multicenter phase II study of amrubicin, 9-amino-anthracycline, in patients with advanced non-small cell lung cancer (Study 1): a West Japan Thoracic oncology Group (WJTOG) trial. *Invest New Drugs* 2006;24:151–158.
18. Okamoto I, Hamada A, Matsunaga Y et al. Phase I patients with refractory or relapsed lung cancer. *Cancer Chemother Pharmacol* 2006;57:282–288.
19. World Medical Association. World Medical Association Declaration of Helsinki. Recommendations guiding physicians in biomedical research involving human subjects. *JAMA* 1997;277:925–926.
20. Therasse P, Arbuck SG, Eisenhauer EA et al. New guidelines to evaluate the response to treatment in solid tumors. *J Natl Cancer Inst* 2000;92:205–216.
21. Fossella FV, DeVore R, Kerr RN et al. Randomized phase III trial of docetaxel versus vinorelbine or ifosfamide in patients with advanced non-small-cell lung cancer previously treated with platinum-containing chemotherapy regimens. *J Clin Oncol* 2000;18:2354–2362.
22. Takeda K, Takifuji N, Negoro S et al. Phase II study of amrubicin, 9-amino-anthracycline, in patients with advanced nonsmall cell lung cancer:

aWest Japan Thoracic Oncology Group (WJTOG) Study. *Invest New Drugs* 2007;25:377–383.

23. Kaneda H, Okamoto I, Hayashi H et al. West Japan Thoracic Oncology Group. Phase II trial of amrubicin for second-line treatment of advanced non-small cell lung cancer: results of the West Japan Thoracic Oncology Group trial (WJTOG0401). *J Thorac Oncol* 2010;5:105–109.

24. Kaira K, Sunaga N, Tomizawa Y et al. A phase II study of amrubicin, a synthetic 9-aminoanthracycline, in patients with previously treated lung cancer. *Lung Cancer* 2010;69:99–104.

25. Igawa S, Takahashi T, Nakamura Y et al. Efficacy of amrubicin for non-small cell lung cancer after failure of two or more prior chemotherapy. *Anticancer Res* 2008;26:3855–3858.

26. Song Z, Yu Y, Chen Z et al. Third-line therapy for advanced non-small-cell lung cancer patients: feasible drugs for feasible patients. *Med Oncol* 2011;Suppl 1:S605–612.

27. Hotta K, Fujiwara Y, Kiura K et al. Relationship between response and survival in more than 50,000 patients with advanced non-small cell lung cancer treated with systemic chemotherapy in 143 phase III trials. *J Thorac Oncol* 2007;2:402–407.

28. Maruyama R, Nishiwaki Y, Tamura T, et al. Phase III study, V-15-32, of gefitinib versus docetaxel in previously treated Japanese patients with non-small-cell lung cancer. *J Clin Oncol* 2008;26:4244-4252.

29. Ohe Y, Ichinose Y, Nakagawa K, et al. Efficacy and safety of two doses of pemetrexed supplemented with folic acid and vitamin B12 in previously treated patients with non-small cell lung cancer. *Clin Cancer Res* 2008;14:4206-4212.



**Table 1. Patient characteristics**

Characteristic	No. of patients
Enrolled patients	41
Age (years)	
Median	66
Range	43-74
Gender	
Male	29
Female	12
ECOG <sup>a</sup> Performance status	
0	16
1	24
2	1
Histological type	
Adenocarcinoma	30
Squamous cell carcinoma	8
Large cell carcinoma	2
Other (not specified)	1
EGFR mutation status	
Positive	7
Negative	26

Unknown	8
No. of prior treatment regimens	
2	26
3	15

---

<sup>a</sup>Eastern Cooperative Oncology Group

**Table 2.** Characteristics of prior first-line, second-line, and third-line therapies

	First-line therapy	Second-line therapy	Third-line therapy
Total	41	41	15
Treatment regimen			
Doublets	38	17	9
Platinum-based			
doublets	38	13	6
Paclitaxel-based	15	5	2
Gemcitabine-based	9	1	1
Vinorelbine-based	5	0	0
Docetaxel-based	4	2	0
Pemetrexed-based	3	4	2
Others	2	1	1
Nonplatinum doublets	0	4	3
Single	2	21	6
Docetaxel	2	15	2
Pemetrexed	0	6	2
Vinorelbine	0	0	2
Gefitinib	1	3	0

**Table 3.** Overall response rate for amrubicin as determined by central review

Response	No. of patients	%	95% CI <sup>a</sup>
Complete response	0	0	
Partial response	4	9.8	
Stable disease	21	51.2	
Progressive disease	15	36.6	
Not evaluable	1	2.4	
Overall response rate	4	9.8	0.6-18.8
Disease control rate	25	61.0	46.0-75.9

<sup>a</sup>CI: confidence interval

## **Figure Legends**

Figure 1. Kaplan-Meier analysis of progression-free survival for all 41 treated patients. CI: confidence interval.

Figure 2. Kaplan-Meier analysis of overall survival for all 41 treated patients. CI: confidence interval.

**Table 4.** Toxicity for all cycles

Toxicity	Grade				Grade $\geq 3$	
	1	2	3	4	No.	%
<b>Hematologic</b>						
Leukopenia	7	5	17	5	22	53.7
Neutropenia	4	5	8	20	28	68.3
Anemia	23	6	4	1	5	12.2
Thrombocytopenia	6	3	4	1	5	12.2
Febrile neutropenia	0	0	7	0	7	17.1
<b>Nonhematologic</b>						
Nausea/Vomiting	15	4	4	0	4	9.8
Anorexia	10	5	5	0	5	12.2
Diarrhea	2	0	1	0	1	2.4
Stomatitis	0	0	1	0	1	2.4
Pneumonitis	1	2	1	0	1	2.4
Infection	0	1	4	0	4	9.8
Fever	0	1	0	0	0	0
Fatigue	1	1	0	0	0	0
Liver dysfunction	7	0	0	0	0	0

# Phase I/II trial of a biweekly combination of S-1 plus docetaxel in patients with previously treated non-small cell lung cancer (KRSG-0601)

**K Komiyama<sup>1</sup>, K Kobayashi<sup>\*1</sup>, S Minezaki<sup>1</sup>, F Kotajima<sup>1</sup>, A Sutani<sup>1</sup>, T Kasai<sup>2</sup>, K Mori<sup>2</sup>, E Hoshi<sup>3</sup>, N Takayanagi<sup>3</sup>, S Koyama<sup>4</sup>, K Eguchi<sup>5</sup>, M Nakayama<sup>5</sup> and K Kikuchi<sup>5</sup> Kanto Respiratory Disease Study Group**

<sup>1</sup>Department of Respiratory Medicine, Saitama Medical University, International Medical Center, 1397-1 Yamane, Hidaka City, Saitama 350-1298, Japan; <sup>2</sup>Tochigi Cancer Center, Tochigi, Japan; <sup>3</sup>Saitama Cardiovascular and Respiratory Center, Saitama, Japan; <sup>4</sup>Jichi Medical University Saitama Medical Center, Saitama, Japan; <sup>5</sup>Saitama Medical Center, Saitama, Japan

**BACKGROUND:** Combination of S-1, an oral fluorouracil derivative, plus docetaxel against non-small cell lung cancer (NSCLC) showed promising efficacy but clinically problematic emesis. A phase I/II study utilising a new schedule for this combination was conducted. **METHODS:** A biweekly regimen of docetaxel on day 1 with oral S-1 on days 1–7 was administered to previously treated NSCLC patients. Doses of docetaxel/S-1 were escalated to 30/80, 35/80, and 40/80 mg m<sup>-2</sup>, respectively, and its efficacy was investigated at the recommended dose below maximum tolerated dose (MTD).

**RESULTS:** In phase I study employing 13 patients, dose-limiting toxicities were febrile neutropenia and treatment delay, with the respective MTDs for docetaxel 40 mg m<sup>-2</sup>/S-1 80 mg m<sup>-2</sup>. In the phase II study, 34 patients were treated with docetaxel 35 mg m<sup>-2</sup>/S-1 80 mg m<sup>-2</sup> for a median cycle of 6. The response and disease control rates were 34.3% (95% confidence interval (CI), 18.6–50.0%) and 62.9% (95% CI, 46.8–72.9%), respectively. Median progression-free survival was 150.5 days. Haematologic grade 4 toxicities were observed in neutropenia (11.8%) and thrombocytopenia (2.9%). Regarding non-haematologic toxicities, including emesis, there were no grade 3/4 side effects.

**CONCLUSION:** Combination of 1-week administration of S-1 with biweekly docetaxel is safe and active for NSCLC.

*British Journal of Cancer* (2012) **107**, 1474–1480. doi:10.1038/bjc.2012.437 www.bjcancer.com

Published online 2 October 2012

© 2012 Cancer Research UK

**Keywords:** non-small cell lung cancer; docetaxel; S-1; phase I study; phase II study

For patients with advanced or metastatic non-small cell lung cancer (NSCLC), platinum-based chemotherapy is the mainstay of first-line treatment on the basis of the moderate improvement in survival and quality of life (Sandler *et al*, 2007; Scagliotti *et al*, 2008; Azzoli *et al*, 2009; Reck *et al*, 2009). Recently, first-line therapy with a tyrosine kinase inhibitor (TKI) was employed in the case of individuals with advanced NSCLC harbouring EGFR mutations (Maemondo *et al*, 2010; Mitsudomi *et al*, 2010; Zhou *et al*, 2011; Rosell *et al*, 2011); however, most of patients with mutated tumours were eventually treated with platinum-based chemotherapy after progression on TKI treatment. After failure of platinum-based regimens in NSCLC patients with or without EGFR mutations, current options for second-line treatment include single-agent therapy with docetaxel, pemetrexed, or erlotinib (Gridelli *et al*, 2008). However, the efficacy of such treatments have remained largely unsatisfactory, with reported response rates in unselected NSCLC patients that had been treated previously being 6.7–10.8% with docetaxel (Shepherd *et al*, 2000), 9.1% with

pemetrexed (Hanna *et al*, 2004), and 8.9% with erlotinib (Shepherd *et al*, 2005). Furthermore, the progression-free survival (PFS) rates of these patients were less than 4 months and 1-year survival rates were 25–37% (Shepherd *et al*, 2000; Fossella *et al*, 2000; Hanna *et al*, 2004; Shepherd *et al*, 2005; Kim *et al*, 2008). Therefore, further research should focus on the development of regimens that are more effective against previously treated advanced NSCLC.

S-1 (Taiho Pharmaceutical Co., Ltd, Tokyo, Japan) is an oral fluoropyrimidine agent comprising the 5-fluorouracil (5-FU) prodrug, tegafur, along with two enzyme inhibitors of 5-chloro-2,4-dihydropyrimidine (CDHP) and potassium oxonate, in a molar ratio of 1:0.4:1. The CDHP enhances the serum levels of 5-FU by competitive inhibition of dihydropyrimidine dehydrogenase (DPD), an enzyme responsible for 5-FU catabolism. Potassium oxonate is a reversible competitive inhibitor of orotate phosphoribosyl transferase (OPRT), a phosphoenzyme for 5-FU, and functions to reduce the gastrointestinal toxicity of 5-FU (Wada *et al*, 2006). These mechanisms mean that oral S-1 administration can generate a higher concentration of 5-FU than protracted intravenous injection of 5-FU alone. S-1 monotherapy has achieved an overall response rate (ORR) of 22% and median survival time (MST) of 11 months when applied to previously untreated patients with advanced NSCLC (Kawahara *et al*, 2001).

In preclinical studies, docetaxel has shown no cross-resistance in 5-FU-resistant human tumour cell lines (Hill *et al*, 1994). In

\*Correspondence: Dr K Kobayashi; E-mail: kobakuni@saitama-med.ac.jp  
 The content of this study was presented during a poster section at the 14th World Conference on Lung Cancer (WCLC) 2011.

Received 16 April 2012; revised 30 August 2012; accepted 31 August 2012; published online 2 October 2012

addition, the combination of S-1 and docetaxel has been reported to have synergistic effects *in vitro* (Wada *et al*, 2006). The combination of S-1 and docetaxel holds particularly great promise, because both drugs display substantial anti-tumour activity as single agents and they have different mechanisms of action and toxicity profiles (Shepherd *et al*, 2000; Fossella *et al*, 2000; Furuse *et al*, 2001; Kubota *et al*, 2008; Maruyama *et al*, 2008). Recent preclinical studies have shown that S-1 and docetaxel have synergistic effects in human cancer xenografts (Takahashi *et al*, 2005; Suto *et al*, 2006; Wada *et al*, 2006). Docetaxel can modulate the expression and activity of DPD and OPRT. Moreover, a low level of DPD activity and a high level of OPRT activity can enhance the anti-tumour effect of 5-FU and S-1.

Several phase II studies found that the combination of docetaxel and S-1 is effective in patients with NSCLC (Atagi *et al*, 2008; Yanagihara *et al*, 2010). These trials employed a combination of docetaxel with oral S-1 for more than 14 consecutive days. However, the administration of oral S-1 for more than 14 consecutive days was subsequently withdrawn because of modest, but continuous, emesis. No trials have evaluated the combination of docetaxel and S-1 treatment for 1 week in patients with previously treated advanced NSCLC. Thus, we conducted a phase I study to find the maximum tolerated doses (MTDs) of biweekly administered docetaxel with oral S-1 for 1 week, and a phase II study to evaluate the efficacy and toxicity of this combination strategy.

## PATIENTS AND METHODS

### Eligibility criteria

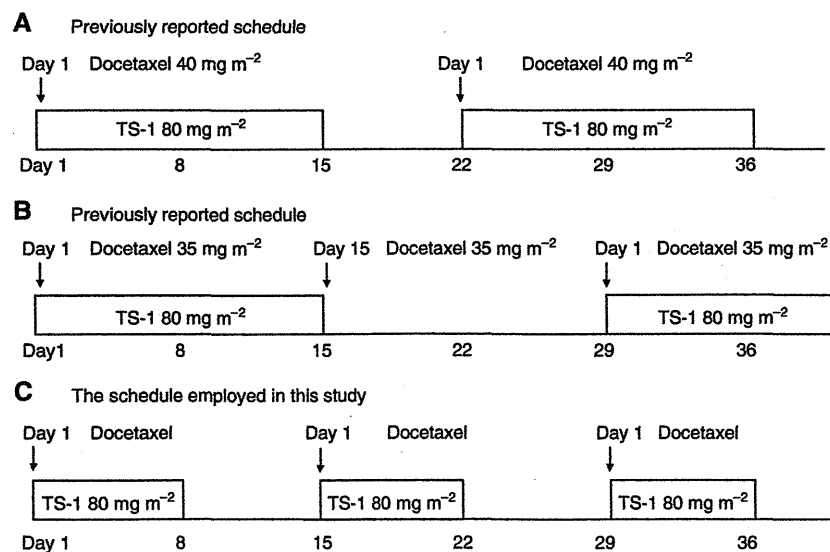
Patients meeting all of the following criteria were enrolled: (1) histologically or cytologically confirmed NSCLC; (2) stages IIIB–IV that is inadequate for curative-intent thoracic radiotherapy, or relapse after surgery; (3) measurable lesions using Response Evaluation Criteria In Solid Tumours (RECIST); (4) previously received cytotoxic chemotherapy; (5) at least 4 weeks had to have elapsed from completion of prior chemotherapy; (6) Eastern Cooperative Oncology Group performance status of 0–2; (7) age 20 years or more; (8) adequate organ functions (white blood cell count of 4000–12 000 per  $\mu\text{l}$ , neutrophil count of 2000 per  $\mu\text{l}$  or

more, platelet count of 100 000 per  $\mu\text{l}$  or more, haemoglobin level of  $9\text{ g dl}^{-1}$  or more, levels of aspartate aminotransferase and alanine aminotransferase less than or equal to 2.5-fold of the upper limits of the normal ranges, total serum bilirubin level less than  $1.5\text{ mg dl}^{-1}$ , total serum creatinine level less than the upper limit of the normal range, creatinine clearance rate of  $50\text{ ml min}^{-1}$  or more); (9) life expectancy exceeding 3 months; (10) capable of oral intake; and (11) written informed consent provided.

### Drug administration

S-1 was given orally twice daily after a meal for 7 consecutive days, followed by 7 days of rest (Figure 1). The dose of S-1 ( $80\text{ mg m}^{-2}$  per day) was simplified according to body surface area (BSA) as follows:  $80\text{ mg}$  per day for patients with a BSA of less than  $1.25\text{ m}^2$ ,  $100\text{ mg}$  per day for those with a BSA of  $1.25\text{--}1.5\text{ m}^2$ , and  $120\text{ mg}$  per day for those with a BSA greater than  $1.5\text{ m}^2$ . Docetaxel (escalating dose:  $30\text{ mg m}^{-2}$  in level 1,  $35\text{ mg m}^{-2}$  in level 2, and  $40\text{ mg m}^{-2}$  in level 3) was diluted in  $500\text{ ml}$  of normal saline and given as an intravenous drip infusion over  $60\text{ min}$  on day 1. Anti-emetic treatment comprised of glucocorticoids and 5HT<sub>3</sub> antagonist was usually given. This regimen was repeated every 2 weeks for at least two courses and until progression, unless predefined dose reduction or stopping criteria were encountered.

In phase I study, dose-limiting toxicity (DLT) was defined as grade 3 or 4 non-haematological toxicities (excluding nausea or vomiting, appetite loss, fatigue), grade 4 haematological toxicities, or any adverse event requiring a break in administration of S-1 for more than 4 days during two courses, or any adverse event requiring delayed administration of docetaxel for more than 8 days during the first three courses. The MTD was estimated based on the analysis of DLT as follows. If DLT occurrence was three out of three, this level was defined as the MTD. If DLT occurrence ranged from one out of three to two out of three, then three patients were added and the same dose level was repeated. If DLT occurrence was three out of six or more, this level was defined as MTD. If this level was non-MTD, then the dose would be escalated to the next level. Recommended dose (RD) was defined as one level lower than the MTD; moreover, RD needed a feasibility of more than four courses. In phase II study, docetaxel at RD and S-1 were administered similarly to the phase I study. Post-treatment was



**Figure 1** Therapeutic experiments for combination therapy of S-1 and docetaxel. Two previous studies have reported regimens of (A) docetaxel  $40\text{ mg m}^{-2}$  on day 1 with S-1  $80\text{ mg m}^{-2}$  for 2 weeks plus a 1-week rest, and (B) docetaxel  $35\text{ mg m}^{-2}$  on day 1 and 15 with S-1  $80\text{ mg m}^{-2}$  for 2 weeks plus a 2-week rest in patients with previously treated advanced NSCLC. The schedule employed in this study was (C) docetaxel  $30\text{--}40\text{ mg m}^{-2}$  on day 1 with S-1  $80\text{ mg m}^{-2}$  for 1 week, in which patients were treated by an anti-emetic treatment, plus a 1-week rest.



withheld until evident disease progression, followed by no restriction afterward.

### Evaluation during chemotherapy

Chest CT scan was examined before the treatment, and thereafter, it was re-examined to investigate tumour response by the RECIST criteria at appropriate times. Tumour response in every patient was evaluated by an external reviewer according to the RECIST criteria, and was classified into four categories: complete response (CR), partial response (PR), stable disease (SD), and progressive disease (PD). A minimum of a 6-week interval from the start of therapy was required for establishing SD. As of PFS, chest X ray and chest CT scan were repeated at least every 4 and 8 weeks, respectively, until disease progression. And other radiographic modalities were also performed when there was a possibility of distant metastasis.

Symptoms, physical examination, complete blood counts, and serum chemistries were monitored weekly during chemotherapy. Toxicity was evaluated for every course according to the common terminology criteria for adverse events (CTCAE) version 3.0.

### Dose-reduction and -termination criteria of chemotherapy

The next course of treatment was started when the neutrophil count returned to 1500 per  $\mu\text{l}$ , the platelet count returned to 100 000 per  $\mu\text{l}$ , and the non-haematologic toxicity recovered to grade 0 or 1. For patients who experienced febrile neutropenia, grade 4 thrombocytopenia, or grade 3 or 4 non-haematologic toxicity, the dose of docetaxel was reduced by  $5 \text{ mg m}^{-2}$  and the dose of S-1 was also reduced by 20 mg per day of the initial dose. For patients who still experienced the same toxicity after the dose reduction, docetaxel was reduced by  $5 \text{ mg m}^{-2}$  and S-1 was reduced by 20 mg per day of the reduced dose, and this could be done up to two times. If recovery from such toxicities at a reduced dose was confirmed, administration at the reduced dose was continued. Patients who still experienced the same toxicity after the dose reduction were withdrawn from the study treatment.

### Statistical and ethical considerations

The primary endpoint of the phase II study was to evaluate tumour response, and the secondary endpoints were to evaluate PFS, overall survival (OS), and safety. We chose a 25% response rate as a desirable target level and a 10% response rate as an undesirable target level. The study design had a power of  $>80\%$  to detect a response with an error of  $<5\%$ . It was necessary to enrol a minimum of 33 patients. According to this, we aimed for 35 patients to take non-evaluable patients into consideration. Exact confidence interval (CI) for ORR was based on the binomial distribution. Overall survival was calculated from the date of registration until death from any cause, whereas PFS was defined as being until disease progression or death from any cause. The OS and PFS were analysed using the Kaplan-Meier method. All statistical tests were one sided, and a *P*-value of less than 0.05 was considered statistically significant.

## RESULTS

### Patient characteristics

The present study was conducted after the protocol had been approved by the Institutional Review Board of each participating institutions. From February 2007 to April 2009, 13 patients in the phase I portion were enrolled from 2 facilities. From October 2009 to November 2010, 35 patients in phase II portion were enrolled from 5 facilities. Patient characteristics are listed in Table 1. All the patients had stage IV or relapsed disease, and most of them had PS

**Table 1** Patient characteristics

	Phase I			
	Level 1	Level 2	Level 3	Phase II
N	3	7	3	35
Median age (range)	65 (65–73)	67 (46–69)	66 (53–69)	65 (41–75)
Male/female	1/2	5/2	2/1	26/8
Stage IIIb/IV/recurrence	0/0/3	0/1/6	0/1/2	0/26/8
ECOG PS 0/1	3/0	7/0	2/1	28/6
Histology, adeno/squamous/ other	2/1/0	7/0/0	3/0/0	27/5/2
EGFR mutation, positive/ negative/unknown	0/0/3	1/2/4	2/1/0	4/14/16
Prior chemotherapy regimen, 1/2/3 <sup>a</sup>	3/0/0	3/4/0	1/1/1	22/8/4
Median no. of course (range)	6 (2–18)	4 (1–24)	5 (5–12)	6 (2–18)

Abbreviations: ECOG PS = Eastern Cooperative Oncology Group performance status; EGFR = epidermal growth factor receptor; TKI = tyrosine kinase inhibitor. In the phase I portion, the dose of S-1 ( $80 \text{ mg m}^{-2}$  per day) was fixed at a dose of  $80 \text{ mg m}^{-2}$  per day for 7 consecutive days, and doses of docetaxel were escalated to be  $30 \text{ mg m}^{-2}$  in level 1,  $35 \text{ mg m}^{-2}$  in level 2, and  $40 \text{ mg m}^{-2}$  in level 3 on days 1 and 15. The treatment was repeated every 2 weeks. <sup>a</sup>The number of prior chemotherapy regimens contains EGFR-TKI treatment.

0 and adenocarcinoma histology. Sensitive EGFR mutations were observed in seven patients who had progress disease after EGFR-TKI treatment. In the phase I portion, there was one unfit patient in level 2, as described below. In the phase II portion, one patient had withdrawn informed consent immediately before treatment. All of the patients had progressed after at least one previous platinum-based regimen, such as cisplatin plus pemetrexed (8 patients), vinorelbine (5 patients) or irinotecan (1 patient), and carboplatin plus paclitaxel (8 patients), pemetrexed (11 patients), or gemcitabine (6 patients). Twenty-two of the 34 patients were given this treatment as a second-line therapy.

### Phase I study results

Toxicities encountered during the phase I study are summarised in Table 2. Three patients were enrolled in level 1, and none experienced DLT. Three patients were enrolled in level 2, and one patient experienced DLT due to grade 3 headache. Consequently, three more patients were added as mentioned in the protocol. One of the three patients, when entering this study, displayed silent brain metastasis; however, this became symptomatic (secondary epilepsy) when the study protocol was stopped. Thus, one more patient was added. Finally, there was one patient who experienced DLT in level 2. In level 3, three patients were enrolled; one experienced DLT due to febrile neutropenia and two experienced DLT due to delay of administering docetaxel. The MTD among 13 patients was  $80 \text{ mg m}^{-2}$  S-1 with  $40 \text{ mg m}^{-2}$  docetaxel. S-1 compliance in every course for all patients in levels 1–3 was 100%. The RD for the phase II study was determined as  $80 \text{ mg m}^{-2}$  S-1 and  $35 \text{ mg m}^{-2}$  docetaxel (level 2).

### Treatment response and survival in the phase II study

A total of 261 courses of chemotherapy were given in phase II. The average and median number of courses given per patient was 7.6 and 6 (range 2–18), respectively. Results of tumour response in the phase I or II study are shown in Table 3. Of the 34 patients in the phase II study, none (0%) achieved CR, 12 (34.3%) achieved PR, 10 (28.6%) had SD, 11 (31.4%) had PD, and 2 (5.7%) were not evaluable, resulting in an ORR of 34.3% (95% CI, 18.6–50.0%). The disease-control rate was 62.9% (95% CI, 46.8–78.9%). As shown in

**Table 2** Toxicities in the phase I

Grade	Level 1 (n = 3)				Level 2 (n = 7)				Level 3 (n = 3)			
	1	2	3	4	1	2	3	4	1	2	3	4
Leucopenia	1	0	0	0	0	3	0	0	2	0	1	0
Neutropenia	0	0	1	0	1	1	2	0	0	0	2	0
Anaemia					2	0	0	0				
<b>Thrombocytopenia</b>												
Febrile neutropenia									0	0	1	0
Nausea	2	0	0	0	1	1	0	0				
Anorexia	2	0	0	0	4	0	0	0	2	0	0	0
Diarrhoea					2	0	0	0	0	1	0	0
Constipation									1	0	0	0
Malaise	2	0	0	0	3	2	0	0	1	0	0	0
Rush	0	0	0	0	4	0	0	0	0	0	0	0
Haemorrhage	0	1	0	0	2	0	0	0	1	0	0	0
Oral mucositis					3	0	0	0	1	0	0	0
Conjunctivitis									2	0	0	0
Paronychia									1	2	0	0
Gastritis					0	1	0	0				
Skin hyperpigmentation									1	0	0	0
Neuropathy(taste)	2	0	0	0	2	0	0	0	1	0	0	0
Dysgeusia					0	2	0	0				
Pain	1	0	0	0	0	1	1	0				
<b>Pneumonitis</b>												
Infection	0	2	0	0	0	2	0	0	0	2	0	0

**Table 3** Response in the phase I/II

	Level			Phase I	Phase II
	1	2	3		
CR	0	0	0	0	0
PR	0	1	1	2	12
SD	2	3	3	7	10
PD	1	2	0	3	11
NE	0	1	0	1	2
Response rate (CR + PR)				16.6%	34.3%
Disease control rate (CR + PR + SD)				75%	62.9%
					(95% CI, 46.8–78.9%)

Abbreviations: CR = complete response; NE = not evaluable; PD = progressive disease; PR = partial response; SD = stable disease. In the phase II portion, patients were treated with recommended doses of docetaxel at 35 mg m<sup>-2</sup> per day and S-1 at 80 mg m<sup>-2</sup> per day.

Figure 2, the median PFS was 150.5 days (95% CI, 96–227 days) and the median OS time was 503 days (95% CI, 446–606 days).

**Toxicity in the phase II study**

All adverse events are shown in Table 4. The most frequent grade 3 or 4 haematological toxicities were neutropenia (41.2%), febrile neutropenia (2.9%), and thrombocytopenia (2.9%). No patient received platelet transfusions. There was no non-haematological grade 3 or 4 toxicity. Nine patients experienced grade 1 nausea, but there were no incidences of grade 2 nausea. Although four patients had grade 2 pulmonary toxicity due to drug-induced pneumonitis (11.8%), these patients recovered after receiving corticosteroids and discontinued this treatment. There was no death or irreversible toxicity in this study that was considered to be related to treatment. Doses of docetaxel administration were reduced in

two patients because of grade 4 thrombocytopenia, lasting a week, and febrile neutropenia. In addition, doses of S-1 were not reduced in any patients. The next course of chemotherapy was delayed in 5 (14.7%) of the 34 patients, mainly because of neutropenia, thrombocytopenia, or increased aspartate aminotransferase or alanine aminotransferase levels.

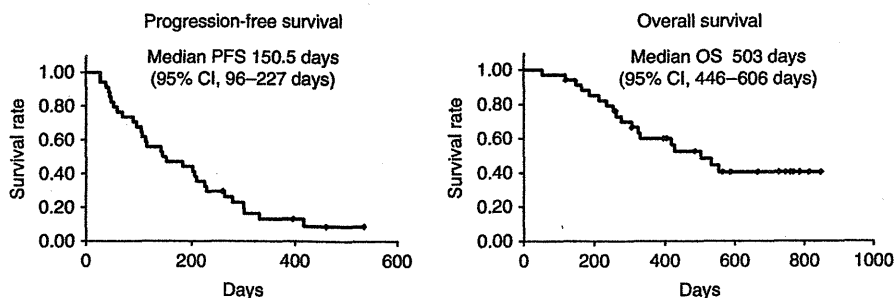
**DISCUSSION**

Many reports have been published investigating combination chemotherapy using two non-platinum agents for recurrent NSCLC, with the objective of improving outcomes further. However, there have been relatively higher or intolerable toxicities observed in this context (Pectasides *et al*, 2001; Spiridonidis *et al*, 2001; Nelli *et al*, 2004; Takeda *et al*, 2009). In the present study, we evaluated the efficacy and safety of a new scheduled combination of S-1 and docetaxel, each of which have shown promising efficacy in the treatment of advanced or metastatic NSCLC.

Our schedule using this combination chemotherapy conferred efficacy with an ORR of 34.3% and a median PFS time of 150 days. The ORR observed in this study was slightly higher than expected. Furthermore, the survival benefits as second- or third-line therapy that were observed compare favourably with other chemotherapy regimens, such as monotherapy with docetaxel, pemetrexed, or erlotinib (Hanna *et al*, 2004; Shepherd *et al*, 2005). Two previous studies have reported that docetaxel at a dose of 40 mg m<sup>-2</sup> on day 1 and S-1 at a dose of 80 mg m<sup>-2</sup> per day on days 1–14 every 3 weeks (Figure 1A) in patients with previously treated advanced NSCLC achieved ORRs of 24.1 and 18.4% with median PFS times of 3.9 months and 4.4 months, respectively. Moreover, their MSTs and 1-year survival rates were 11.8 months and 16.1 months, and 42 and 60%, respectively (Atagi *et al*, 2008; Yanagihara *et al*, 2010). In addition, a previous study has reported that the combination of 80 mg m<sup>-2</sup> S-1 per day for 14 consecutive days and 35 mg m<sup>-2</sup> docetaxel on days 1 and 15 every 4 weeks (Figure 1B) in patients with previously treated advanced NSCLC achieved ORRs of 16.3% with median PFS time of 3 months, MST of 9 months, and 1-year survival rates of 42%, respectively (Oki *et al*, 2011). Our response rates and median PFS time were slightly higher than those of studies reported by Atagi *et al*, 2008, Yanagihara *et al*, 2010, and Oki *et al*, 2011.

The majority of non-haematologic toxicities were mild and tolerable without grade 3 or 4 non-haematologic toxicity. These toxicity results are lower than those observed in phase I or II studies described above in patients with NSCLC (Atagi *et al*, 2008; Yanagihara *et al*, 2010; Oki *et al*, 2011). Especially, in terms of emesis, about one-fourth of the patients felt grade 1 nausea for a short duration, but there were no patients that exhibited grade 2 nausea in our study. The incidence (26.4%) of emesis in our study was lower than studies reported by Yanagihara *et al*, 2010 (45%) and Oki *et al*, 2011 (44.8%). Emesis by our treatment might be weak compared with these previous regimens (Yanagihara *et al*, 2010; Oki *et al*, 2011). A characteristic point of our treatment is the short duration of oral S-1, which is treated by anti-emetic therapy with 5HT3 antagonist and steroids to counteract docetaxel-induced emesis. Results of the median number of courses in our regimen (6 courses: range 2–18) tended to be higher compared with those in the phase II study reported by Atagi *et al*, 2008 (3 courses: range 1–8), Oki *et al*, 2011 (2 courses: range 1–6), and Yanagihara *et al*, 2010 (6 courses: range 1–8). Our increased feasibility and dosing might have an impact on the better response rates, longer PFS, and longer OS observed, as compared with that previously documented (Atagi *et al*, 2008; Yanagihara *et al*, 2010; Oki *et al*, 2011).

Caucasians have lower tolerance to oral S-1 than the Japanese; namely, 80 mg m<sup>-2</sup> S-1 per day has been given in Japan, whereas 50 mg m<sup>-2</sup> S-1 per day has been clinically used in the West



**Figure 2** The figure shows progression-free survival (PFS) and overall survival (OS) from the start of this treatment, estimated by the Kaplan–Meier method. The median PFS time was 150.5 days (range 96–227 days). The median OS time was 503 days (range 446–606 days).

**Table 4** Toxicities in the phase II ( $n = 34$ )

	Grade				Grade 3/4 (Total)
	1	2	3	4	
Leucopenia	5	3	3	1	11.4% (35.2%)
Neutropenia	3	1	7	3	28.5% (41.1%)
Anaemia	5	3	0	0	0% (23.5%)
Thrombocytopenia	2	2	0	1	2.9% (14.7%)
Febrile neutropenia	0	0	1	0	2.9% (2.9%)
Nausea	9	0	0	0	0% (26.4%)
Vomiting	1	0	0	0	0% (2.9%)
Anorexia	13	1	0	0	0% (41.1%)
Diarrhoea	2	0	0	0	0% (5.8%)
Constipation	7	0	0	0	0% (20.5%)
Malaise (fatigue)	9	1	0	0	0% (29.4%)
GI haemorrhage	0	1	0	0	0% (2.9%)
Stomatitis	1	0	0	0	0% (2.9%)
Hiccups	1	2	0	0	0% (8.8%)
Epistaxis	2	0	0	0	0% (5.8%)
Tracheitis	1	0	0	0	0% (2.9%)
Pneumonitis	1	4	0	0	0% (14.7%)
Skin hyperpigmentation	5	0	0	0	0% (14.7%)
Oral mucositis	4	3	0	0	0% (20.5%)
Rash	4	2	0	0	0% (17.6%)
Palmar plantar erythrodysesthesia syndrome	1	0	0	0	0% (2.9%)
Paronychia	0	2	0	0	0% (5.8%)
Nail loss	0	1	0	0	0% (2.9%)
Nail ridging	1	0	0	0	0% (2.9%)
Nail discoloration	5	0	0	0	0% (14.7%)
Alopecia	9	1	0	0	0% (29.4%)
Arthralgia	1	0	0	0	0% (2.9%)
Dysgeusia	7	1	0	0	0% (23.5%)
Neuropathy (sensory)	6	1	0	0	0% (20.5%)
AST/ALT increased	4	1	0	0	0% (14.7%)
CR increased	3	0	0	0	0% (8.8%)
Bil increased	2	0	0	0	0% (5.8%)
ALP increased	1	0	0	0	0% (2.9%)
LDH increased	1	0	0	0	0% (2.9%)

Abbreviations: ALP = alkaline phosphatase; ALT = alanine aminotransferase; AST = aspartate aminotransferase; Bil = bilirubin; CR = complete response; GI = gastrointestinal; LDH = lactate dehydrogenase.

(Koizumi *et al*, 2003; Ajani *et al*, 2010). Interest in S-1 in the West has been considerable, but the well-tolerated doses used in Japan resulted in considerable emetic toxicity in Caucasians (Ajani *et al*, 2005). This difference in tolerance is probably due to differences in the efficiency of the cytochrome P-450 enzyme system determined

by polymorphisms in different populations. There have been many reports of ethnic differences in the safety and efficacy profile of S-1 and docetaxel (Yamaguchi *et al*, 2006; Yoshida *et al*, 2006; Atagi *et al*, 2008; Yanagihara *et al*, 2010; Ajani *et al*, 2010), and it has been shown that the CYP2A6\*9 genetic polymorphism is a potential predictive marker, for efficacy and toxicity, in patients receiving the combination of S-1 and docetaxel for metastatic gastric carcinoma (Park *et al*, 2007). In the development of a S-1/docetaxel combination therapy in the United States and Europe, further optimisation of the dose of each agent may be required to account for these differences. Our short duration of administering oral S-1 might overcome the low tolerance to S-1 in the West.

There are three limitations in this study. First, of the total 34 patients in the phase II study, sensitive *EGFR* mutations were detected in 4 patients who had disease progression after gefitinib or erlotinib treatment, and there were 14 patients with unknown status of *EGFR* mutations. Sixteen patients (47%) had post-study treatments, and *EGFR*-TKI was administered in 32.3% of patients. Thus, the use of *EGFR*-TKI in post study might contribute to the extension of OS. Second, although the sample sizes in phase I and II studies were different and rather small, the response rates in phase I and II were different, meaning that a further confirmatory study should be considered. Third, 4 patients had grade 2 pulmonary toxicity due to drug-induced interstitial lung disease (ILD; 11.8%) in this study. The toxicity of drug-induced ILD in previous studies of S-1 alone, S-1 plus docetaxel, and S-1 plus gemcitabine have been reported 3.3, 3.5–5, and 9%, respectively (Wada *et al*, 2006; Atagi *et al*, 2008; Yanagihara *et al*, 2010; Takiguchi *et al*, 2011). We speculated that, comparing with the previous studies, drug-induced ILD might occur in our present study due to longer term of the treatment and biweekly dosing of docetaxel. But limited number of the patients in phase II portion produces a wide range of 95% CI (4–28%), indicating a further accumulation of the patients treated by this regimen.

## CONCLUSION

A new combination of 1-week administration of S-1 with biweekly docetaxel is safe and active for advanced NSCLC after failure of prior chemotherapy. A phase III trial comparing docetaxel with or without S-1 would warrant further investigation.

## ACKNOWLEDGEMENTS

This work was supported by the Kanto Respiratory Disease Study Group. This trial was designed and conducted independently of any profit organisation.

## REFERENCES

- Ajani JA, Faust J, Ikeda K, Yao JC, Anbe H, Carr KL, Houghton M, Urrea P (2005) Phase I pharmacokinetic study of S-1 plus cisplatin in patients with advanced gastric carcinoma. *J Clin Oncol* 23: 6957–6965
- Ajani JA, Rodriguez W, Bodoky G, Moiseyenko V, Lichinitser M, Gorbunova V, Vynnychenko I, Garin A, Lang I, Falcon S (2010) Multicenter phase III comparison of cisplatin/S-1 with cisplatin/infusional fluorouracil in advanced gastric or gastroesophageal adenocarcinoma study: the FLAGS trial. *J Clin Oncol* 28: 1547–1553
- Atagi S, Kawahara M, Kusunoki Y, Takada M, Kawaguchi T, Okishio K, Kubo A, Uehira K, Yumine K, Tomizawa Y, Saito R, Fukai S, Komatsu H (2008) Phase I/II study of docetaxel and S-1 in patients with previously treated non-small cell lung cancer. *J Thorac Oncol* 3: 1012–1017
- Azzoli CG, Baker Jr S, Temin S, Pao W, Aliff T, Brahmer J, Johnson DH, Laskin JL, Masters G, Milton D, Nordquist L, Pfister DG, Piantadosi S, Schiller JH, Smith R, Smith TJ, Strawn JR, Trent D, Giaccone G (2009) American Society of Clinical Oncology Clinical Practice Guideline update on chemotherapy for stage IV non-small-cell lung cancer. *J Clin Oncol* 27: 6251–6266
- Fossella FV, DeVore R, Kerr RN, Crawford J, Natale RR, Dunphy F, Kalman L, Miller V, Lee JS, Moore M, Gandara D, Karp D, Vokes E, Kris M, Kim Y, Gamza F, Hammershaimb L (2000) Randomized phase III trial of docetaxel versus vinorelbine or ifosfamide in patients with advanced non-small-cell lung cancer previously treated with platinum-containing chemotherapy regimens. *J Clin Oncol* 18: 2354–2362
- Furuse K, Kawahara M, Hasegawa K, Kudoh S, Takada M, Sugiura T, Ichinose Y, Fukuoka M, Ohashi Y, Niitani H, S-1 Cooperative Study Group (Lung Cancer Working Group) (2001) Early phase II study of S-1, a new oral fluoropyrimidine, for advanced non-small cell lung cancer. *Int J Clin Oncol* 6: 236–241
- Gridelli C, Ardizzoni A, Ciardiello F, Hanna N, Heymach JV, Perrone F, Rosell R, Shepherd FA, Thatcher N, Vansteenkiste J, De Petris L, Di Maio M, De Marinis F (2008) Second-line treatment of advanced non-small cell lung cancer. *J Thorac Oncol* 3: 430–440
- Hanna N, Shepherd FA, Fossella FV, Pereira JR, De Marinis F, von Pawel J, Gatzemeier U, Tsao TC, Pless M, Muller T, Lim HL, Desch C, Szondy K, Gervais R, Shaharyar Manegold C, Paul S, Paoletti P, Einhorn L, Bunn Jr PA (2004) Randomized phase III trial of pemetrexed versus docetaxel in patients with non-small-cell lung cancer previously treated with chemotherapy. *J Clin Oncol* 22: 1589–1597
- Hill BT, Whelan RD, Shellard SA, McClean S, Hosking LK (1994) Differential cytotoxic effects of docetaxel in a range of mammalian tumor cell lines and certain drug resistant sublines in vitro. *Invest New Drugs* 12: 169–182
- Kawahara M, Furuse K, Segawa Y, Yoshimori K, Matsui K, Kudoh S, Hasegawa K, Niitani H, S-1 Cooperative Study Group (Lung Cancer Working Group) (2001) Phase II study of S-1, a novel oral fluorouracil, in advanced non-small-cell lung cancer. *Br J Cancer* 85: 939–943
- Kim ES, Hirsh V, Mok T, Socinski MA, Gervais R, Wu YL, Li LY, Watkins CL, Sellers MV, Lowe ES, Sun Y, Liao ML, Osterlind K, Reck M, Armour AA, Shepherd FA, Lippman SM, Douillard JY (2008) Gefitinib versus docetaxel in previously treated non-small-cell lung cancer (INTEREST): a randomized phase III trial. *Lancet* 372: 1809–1818
- Koizumi W, Tanabe S, Saigenji K, Ohtsu A, Boku N, Nagashima F, Shirao K, Matsumura Y, Gotoh M (2003) Phase I/II study of S-1 combined with cisplatin in patients with advanced gastric cancer. *Br J Cancer* 89: 2207–2212
- Kubota K, Kawahara M, Ogawara M, Nishiwaki Y, Komuta K, Minato K, Fujita Y, Teramukai S, Fukushima M, Furuse K, Japan Multi-National Trial Organisation (2008) Vinorelbine plus gemcitabine followed by docetaxel versus carboplatin plus paclitaxel in patients with advanced non-small-cell lung cancer: a randomised open-label, phase III study. *Lancet Oncol* 9: 1135–1142
- Maemondo M, Inoue A, Kobayashi K, Sugawara S, Oizumi S, Isobe H, Gemma A, Harada M, Yoshizawa H, Kinoshita I, Fujita Y, Okinaga S, Hirano H, Yoshimori K, Harada T, Ogura T, Ando M, Miyazawa H, Tanaka T, Saijo Y, Hagiwara K, Morita S, Nukiwa T, North-East Japan Study Group (2010) Gefitinib or chemotherapy for non-small cell lung cancer with mutated EGFR. *N Engl J Med* 362: 2380–2388
- Maruyama R, Nishiwaki Y, Tamura T, Yamamoto N, Tsuboi M, Nakagawa K, Shinkai T, Negoro S, Imamura F, Eguchi K, Takeda K, Inoue A, Tomii K, Harada M, Masuda N, Jiang H, Itoh Y, Ichinose Y, Saijo N, Fukuoka M (2008) Phase III study V-15–32 of gefitinib versus docetaxel in previously treated Japanese patients with non-small-cell lung cancer. *J Clin Oncol* 26: 4244–4252
- Mitsudomi T, Morita S, Yatabe Y, Negoro S, Okamoto I, Tsurutani J, Seto T, Satouchi M, Tada H, Hirashima T, Asami K, Katakami N, Takada M, Yoshioka H, Shibata K, Kudoh S, Shimizu E, Saito H, Toyooka S, Nakagawa K, Fukuoka M, West Japan Oncology Group (2010) Gefitinib versus cisplatin plus docetaxel in patients with non-small cell lung cancer harbouring mutations of epidermal growth factor receptor (WJTOG3405). *Lancet Oncol* 11(2): 121–128
- Nelli F, Naso G, De Pasquale Ceratti A, Saltarelli R, Dauria G, Lugini A, Ferraldeschi R, Picone V, Moscetti L, Cortesi E (2004) Weekly vinorelbine and docetaxel as second-line chemotherapy for pretreated non-small cell lung cancer patients: a phase I-II trial. *J Chemother* 16: 392–399
- Oki Y, Hirose T, Yamaoka T, Kusumoto S, Shirai T, Sugiyama T, Okuda K, Nakashima M, Murata Y, Ohmori T, Adachi M (2011) Phase II study of S-1, a novel oral fluoropyrimidine, and biweekly administration of docetaxel for previously treated advanced non-small-cell lung cancer. *Cancer Chemother Pharmacol* 67(4): 791–797
- Park SR, Park MS, Park YL, Kim NK, Lee JS, Kim HK, Lim HS (2007) CYP2A6 genetic polymorphism as a predictive marker for clinical outcomes in patients with metastatic gastric carcinoma treated with S-1 plus docetaxel. 2007 ASCO Annual Meeting Proceedings. *J Clin Oncol* 25: 230s (abstr 4633)
- Pectasides D, Kalofonos HP, Samantas E, Nicolaidis C, Papacostas P, Onyenadum A, Visvikis A, Skarlos D, Fountzilias G (2001) An out-patient second-line chemotherapy with gemcitabine and vinorelbine in patients with non-small cell lung cancer previously treated with cisplatin-based chemotherapy. A phase II study of the Hellenic Co-operative Oncology Group. *Anticancer Res* 21: 3005–3010
- Rosell R, Gervais R, Vergnenegre A, Massuti B, Felip E, Cardenal F, Garcia Gomez R, Pallares C, Sanchez JM, Porta R, Cobo M, Di Seri M, Garrido Lopez P, Insa A, De Marinis F, Corre R, Carreras M, Carcereny E, Taron M, Paz-Ares LG, Spanish Lung Cancer Group (2011) Erlotinib versus chemotherapy (CT) in advanced non-small cell lung cancer (NSCLC) patients (p) with epidermal growth factor (EGFR) mutations. 2011 ASCO Annual Meeting Proceeding. *J Clin Oncol* 29 (suppl abstr 7503)
- Reck M, von Pawel J, Zatloukal P, Ramlau R, Gorbounova V, Hirsh V, Leigh N, Mezger J, Archer V, Moore N, Manegold C (2009) Phase III trial of cisplatin plus gemcitabine with either placebo or bevacizumab as first-line therapy for non-squamous non-small-cell lung cancer: AVAIL. *J Clin Oncol* 27: 1227–1234
- Sandler A, Gray R, Perry MC, Brahmer J, Schiller JH, Dowlati A, Lilienbaum R, Johnson DH (2007) Paclitaxel-carboplatin alone or with bevacizumab for non-small-cell lung cancer. *N Engl J Med* 355(24): 2542–2550
- Scagliotti GV, Parikh P, von Pawel J, Biesma B, Vansteenkiste J, Manegold C, Serwatowski P, Gatzemeier U, Digumarti R, Zukin M, Lee JS, Mellemegaard A, Park K, Patil S, Rolski J, Goksel T, de Marinis F, Simms L, Sugarman KP, Gandara D (2008) Phase III study comparing cisplatin plus gemcitabine with cisplatin plus pemetrexed in chemotherapy-naïve patients with advanced-stage non-small-cell lung cancer. *J Clin Oncol* 26: 3543–3551
- Shepherd FA, Dancey J, Ramlau R, Mattson K, Gralla R, O'Rourke M, Levitan N, Gressot L, Vincent M, Burkes R, Coughlin S, Kim Y, Berille J (2000) Prospective randomized trial of docetaxel versus best supportive care in patients with non-small-cell lung cancer previously treated with platinum-based chemotherapy. *J Clin Oncol* 18: 2095–2103
- Shepherd FA, Rodrigues Pereira J, Ciuleanu T, Tan EH, Hirsh V, Thongprasert S, Campos D, Maoleekoonpiroj S, Smylie M, Martins R, van Kooten M, Dediu M, Findlay B, Tu D, Johnston D, Bezjak A, Clark G, Santabárbara P, Seymour L, National Cancer Institute of Canada Clinical Trials Group (2005) Erlotinib in previously treated non-small cell lung cancer. *N Engl J Med* 353: 123–132
- Spiridonidis CH, Laufman LR, Carman L, Moore T, Blair S, Jones J, George C, Patel T, Roach R, Rupert R, Zangmeister J, Colborn D, Kuebler JP (2001) Secondline chemotherapy for non-small-cell lung cancer with monthly docetaxel and weekly gemcitabine: a phase II trial. *Ann Oncol* 12: 89–94
- Suto A, Kubota T, Fukushima M, Ikeda T, Takeshita T, Ohmiya H, Kitajima M (2006) Antitumor effect of combination of S-1 and docetaxel on the human breast cancer xenograft transplanted into SCID mice. *Oncol Rep* 15: 1517–1522